

**Prevention Research Centers  
PRC Information System  
(9020-0650)**

Complete PRC IS screenshots of  
current system (August 21, 2006)

Deletions, modification, and additions are  
noted throughout, numbered to correspond  
with the change justification document  
submitted June 1, 2006.

Pages with no changes are also included  
and marked as such.



[CDC Home](#)

[Search](#)

[Health Topics A-Z](#)

National Center for Chronic Disease Prevention and Health Promotion

# PREVENTION RESEARCH CENTERS

PRC Information System



\* Required  
+ Performanc

[PRC IS](#)

[My PRC](#)

[Log-Out](#)

## Welcome

**State University of New York at Albany  
Prevention Research Center**

Select the fiscal year?  Select one



Form Approved OMB NO.: 0920-0650

Expiration Date: 11/30/2007

Public reporting burden of this collection of information is estimated to average 4.25 hours per response (interim report), including the time for reviewing instructions, searching existing data sources, gathering and maintaining the data needed, and completing and reviewing the collection of information. An agency may not conduct or sponsor, and a person is not required to respond to a collection of information unless it displays a currently valid OMB control number. Send comments regarding this burden estimate or any other aspect of this collection of information, including suggestions for reducing this burden to CDC/ATSDR Reports Clearance Officer; 1600 Clifton Road NE, MS D-24, Atlanta, Georgia 30333; ATTN: PRA (0920-0650)

[Privacy Policy](#) | [Accessibility](#)

[PRC Home](#) | [News](#) | [Contact Us](#)

[CDC Home](#) | [Search](#) | [Health Topics A-Z](#)

This page was last reviewed on 10/17/2005  
Quality Assurance Build

United States Department of Health and Human Services  
Centers for Disease Control and Prevention  
National Center for Chronic Disease Prevention and Health Promotion  
Division of Adult and Community Health

**Prevention Research Centers  
PRC Information System**

**Center Information  
Section**

*Center Information*



[CDC Home](#)

[Search](#)

[Health Topics A-Z](#)

National Center for Chronic Disease Prevention and Health Promotion

# PREVENTION RESEARCH CENTERS

PRC Information System



\* Required  
+ Performance Indicator Help

## PRC IS

### My PRC

- [Center Information](#)
- [Projects](#)
- [Products](#)
- [Required Reports](#)

### [Log-Out](#)

## State University of New York at Albany Prevention Research Center

2005-2006

### Edit General Information

#### Office mailing address

Address line 1\*

Address line 2

City, \* State, \* ZIP\*

Form fields for address (partially obscured by 'E')

Select one

#### Overnight mailing address

Same as office mailing address? \*  Yes  No

Address line 1

Address line 2

City, State, ZIP

Select one

Telephone

Ext.

Fax

Website

NCC region Northeast

NCC regional director Ralph Fucillo (Harvard University)

#### Community description\*

Briefly describe the partnering community the center focuses on

① Delete

#### Mission

Briefly state the center's mission.

### CENTER INFORMATION

[General Information](#)

[5-Year Goals](#)

[Annual Work Plan](#)

[Center Staff](#)

[Community Committees](#)

[National Community Committee \(NCC\) Representatives](#)

[Partners](#)

[Health Priorities](#)

[Research Agenda](#)

[Evaluation Plan](#)

2



## Organizational Chart

To upload a copy of the center's organizational chart, enter the entire path of the organizational chart file or click the 'Browse' button.\*

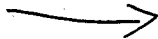
Entire path and file name

Date organizational chart last revised?  (mm/dd/yyyy)

Can the organizational chart be shared with other PRCs?

Yes  No

13 Addition



Save

Cancel

14 Addition

---

[Privacy Policy](#) | [Accessibility](#)

[PRC Home](#) | [News](#) | [Contact Us](#)

[CDC Home](#) | [Search](#) | [Health Topics A-Z](#)

This page was last reviewed on 10/17/2005  
Quality Assurance Build

[United States Department of Health and Human Services](#)  
[Centers for Disease Control and Prevention](#)  
[National Center for Chronic Disease Prevention and Health Promotion](#)  
[Division of Adult and Community Health](#)

3



National Center for Chronic Disease Prevention and Health Promotion

# PREVENTION RESEARCH CENTERS @

PRC Information System

\* Required  
+ Performance Indicator  
Help

### PRC IS

#### My PRC

- [Center Information](#)
- [Projects](#)
- [Products](#)
- [Required Reports](#)

#### Log-Out

*No changes*

## State University of New York at Albany Prevention Research Center

2005-2006

### 5-Year Goals

#### CENTER INFORMATION

**Evaluation Goals** [Add Goal](#)

[General Information](#)

**Collaboration and Partnership Goals** [Add Goal](#)

[5-Year Goals](#)

**Communication and Dissemination Goals** [Add Goal](#)

[Annual Work Plan](#)

**Infrastructure Goals** [Add Goal](#)

[Center Staff](#)

**Training and Education Goals** [Add Goal](#)

[Community Committees](#)

[National Community Committee \(NCC\) Representatives](#)

[Partners](#)

[Health Priorities](#)

[Research Agenda](#)

[Evaluation Plan](#)

[Privacy Policy](#) | [Accessibility](#)

[PRC Home](#) | [News](#) | [Contact Us](#)

[CDC Home](#) | [Search](#) | [Health Topics A-Z](#)

This page was last reviewed on 10/17/2005  
Quality Assurance Build

United States Department of Health and Human Services  
Centers for Disease Control and Prevention  
National Center for Chronic Disease Prevention and Health Promotion  
Division of Adult and Community Health

4



National Center for Chronic Disease Prevention and Health Promotion

# PREVENTION RESEARCH CENTERS

PRC Information System



\* Required  
+ Performance Indicator Help

- PRC IS**
- My PRC**
- [Center Information](#)
- [Projects](#)
- [Products](#)
- [Required Reports](#)
- [Log-Out](#)**

**State University of New York at Albany  
Prevention Research Center**

**2005-2006**

## Add 5-Year Goal

**Program Component** Evaluation

### Goal Statement

Briefly describe one of the center's 5-year goals.\*

*No changes*

**Status\*** Select one



### CENTER INFORMATION

- [General Information](#)
- [5-Year Goals](#)
- [Annual Work Plan](#)
- [Center Staff](#)
- [Community Committees](#)
- [National Community Committee \(NCC\) Representatives](#)
- [Partners](#)
- [Health Priorities](#)
- [Research Agenda](#)
- [Evaluation Plan](#)

[Privacy Policy](#) | [Accessibility](#)

[PRC Home](#) | [News](#) | [Contact Us](#)

[CDC Home](#) | [Search](#) | [Health Topics A-Z](#)

This page was last reviewed on 10/17/2005  
Quality Assurance Build

United States Department of Health and Human Services  
Centers for Disease Control and Prevention  
National Center for Chronic Disease Prevention and Health Promotion  
Division of Adult and Community Health

5





National Center for Chronic Disease Prevention and Health Promotion

# PREVENTION RESEARCH CENTERS

PRC Information System



\* Required  
+ Performance Indicator  
Help

## PRC IS

### My PRC

- [Center Information](#)
- [Projects](#)
- [Products](#)
- [Required Reports](#)

### Log-Out

**State University of New York at Albany  
Prevention Research Center**

**2005-2006**

### Add 5-Year Goal

**Program Component** Collaboration and Partnership

### Goal Statement

Briefly describe one of the center's 5-year goals.\*

*No changes*

**Status\*** Select one



### CENTER INFORMATION

- [General Information](#)
- [5-Year Goals](#)
- [Annual Work Plan](#)
- [Center Staff](#)
- [Community Committees](#)
- [National Community Committee \(NCC\) Representatives](#)
- [Partners](#)
- [Health Priorities](#)
- [Research Agenda](#)
- [Evaluation Plan](#)

[Privacy Policy](#) | [Accessibility](#)

[PRC Home](#) | [News](#) | [Contact Us](#)

[CDC Home](#) | [Search](#) | [Health Topics A-Z](#)

This page was last reviewed on 10/17/2005  
Quality Assurance Build

United States Department of Health and Human Services  
Centers for Disease Control and Prevention  
National Center for Chronic Disease Prevention and Health Promotion  
Division of Adult and Community Health

6



National Center for Chronic Disease Prevention and Health Promotion

# PREVENTION RESEARCH CENTERS

PRC Information System



\* Required  
+ Performance Indicator  
Help

### PRC IS

#### My PRC

- [Center Information](#)
- [Projects](#)
- [Products](#)
- [Required Reports](#)

#### Log-Out

**State University of New York at Albany  
Prevention Research Center**

**2005-2006**

### Add 5-Year Goal

**Program Component**    Communication and Dissemination

### Goal Statement

Briefly describe one of the center's 5-year goals.\*

*No changes*

**Status**

Select one



### CENTER INFORMATION

- [General Information](#)
- [5-Year Goals](#)
- [Annual Work Plan](#)
- [Center Staff](#)
- [Community Committees](#)
- [National Community Committee \(NCC\) Representatives](#)
- [Partners](#)
- [Health Priorities](#)
- [Research Agenda](#)
- [Evaluation Plan](#)

[Privacy Policy](#) | [Accessibility](#)

[PRC Home](#) | [News](#) | [Contact Us](#)

[CDC Home](#) | [Search](#) | [Health Topics A-Z](#)

This page was last reviewed on 10/17/2005  
Quality Assurance Build

United States Department of Health and Human Services  
Centers for Disease Control and Prevention  
National Center for Chronic Disease Prevention and Health Promotion  
Division of Adult and Community Health



National Center for Chronic Disease Prevention and Health Promotion

# PREVENTION RESEARCH CENTERS

PRC Information System



\* Required  
+ Performance Indicator  
Help

### PRC IS

#### My PRC

- [Center Information](#)
- [Projects](#)
- [Products](#)
- [Required Reports](#)

#### Log-Out

**State University of New York at Albany  
Prevention Research Center**

**2005-2006**

### Add 5-Year Goal

**Program Component** Infrastructure

### Goal Statement

Briefly describe one of the center's 5-year goals. \*

*No changes*

**Status\*** Select one



### CENTER INFORMATION

- [General Information](#)
- [5-Year Goals](#)
- [Annual Work Plan](#)
- [Center Staff](#)
- [Community Committees](#)
- [National Community Committee \(NCC\) Representatives](#)
- [Partners](#)
- [Health Priorities](#)
- [Research Agenda](#)
- [Evaluation Plan](#)

[Privacy Policy](#) | [Accessibility](#)

[PRC Home](#) | [News](#) | [Contact Us](#)

[CDC Home](#) | [Search](#) | [Health Topics A-Z](#)

This page was last reviewed on 10/17/2005  
Quality Assurance Build

United States Department of Health and Human Services  
Centers for Disease Control and Prevention  
National Center for Chronic Disease Prevention and Health Promotion  
Division of Adult and Community Health

8



National Center for Chronic Disease Prevention and Health Promotion

# PREVENTION RESEARCH CENTERS

PRC Information System

\* Required  
+ Performance Indicator  
Help

### PRC IS

#### My PRC

- [Center Information](#)
- [Projects](#)
- [Products](#)
- [Required Reports](#)

#### Log-Out

**State University of New York at Albany  
Prevention Research Center**

**2005-2006**

### Add 5-Year Goal

**Program Component** Training and Education

### Goal Statement

Briefly describe one of the center's 5-year goals. \*

### CENTER INFORMATION

- [General Information](#)
- [5-Year Goals](#)
- [Annual Work Plan](#)
- [Center Staff](#)
- [Community Committees](#)
- [National Community Committee \(NCC\) Representatives](#)
- [Partners](#)
- [Health Priorities](#)
- [Research Agenda](#)
- [Evaluation Plan](#)

*No changes*

**Status** Select one

[Privacy Policy](#) | [Accessibility](#)

[PRC Home](#) | [News](#) | [Contact Us](#)

[CDC Home](#) | [Search](#) | [Health Topics A-Z](#)

This page was last reviewed on 10/17/2005  
Quality Assurance Build

United States Department of Health and Human Services  
Centers for Disease Control and Prevention  
National Center for Chronic Disease Prevention and Health Promotion  
Division of Adult and Community Health

9



National Center for Chronic Disease Prevention and Health Promotion

# PREVENTION RESEARCH CENTERS

PRC Information System

\* Required  
+ Performance Indicator Help

## PRC IS

### My PRC

- [Center Information](#)
- [Projects](#)
- [Products](#)
- [Required Reports](#)

### Log-Out

*No changes*

## State University of New York at Albany Prevention Research Center

2005-2006

### Annual Work Plan

#### Evaluation Objectives

[Add Objective](#)

#### Collaboration and Partnership Objectives

[Add Objective](#)

#### Communication and Dissemination Objectives

[Add Objective](#)

#### Infrastructure Objectives

[Add Objective](#)

#### Training and Education Objectives

[Add Objective](#)

### CENTER INFORMATION

[General Information](#)

[5-Year Goals](#)

[Annual Work Plan](#)

[Center Staff](#)

[Community Committees](#)

[National Community Committee \(NCC\) Representatives](#)

[Partners](#)

[Health Priorities](#)

[Research Agenda](#)

[Evaluation Plan](#)

[Privacy Policy](#) | [Accessibility](#)

[PRC Home](#) | [News](#) | [Contact Us](#)

[CDC Home](#) | [Search](#) | [Health Topics A-Z](#)

This page was last reviewed on 10/17/2005  
Quality Assurance Build

United States Department of Health and Human Services  
Centers for Disease Control and Prevention  
National Center for Chronic Disease Prevention and Health Promotion  
Division of Adult and Community Health

10



National Center for Chronic Disease Prevention and Health Promotion

# PREVENTION RESEARCH CENTERS

PRC Information System

\* Required  
+ Performance Indicator Help

## PRC IS

### My PRC

- [Center Information](#)
- [Projects](#)
- [Products](#)
- [Required Reports](#)

### Log-Out

*No changes*

## State University of New York at Albany Prevention Research Center

2005-2006

### Add Work Plan Objective

### CENTER INFORMATION

### Relationship to Evaluation Goal

#### General Information

Select which 5-year goal the objective relates to.

#### 5-Year Goals

Select one

#### Annual Work Plan

#### Center Staff

### Objective

#### Community Committees

Briefly state the objective that supports the goal (include a measurable and specific intended outcome).\*

#### National Community Committee (NCC) Representatives

#### Partners

#### Health Priorities

#### Research Agenda

#### Evaluation Plan

Expected date of completion Select one (yyyy)

Status Select one

### Anticipated Challenges

Briefly describe any anticipated challenges and the plans to address them.\*



[Privacy Policy](#) | [Accessibility](#)

[PRC Home](#) | [News](#) | [Contact Us](#)

[CDC Home](#) | [Search](#) | [Health Topics A-Z](#)

This page was last reviewed on 3/13/2006  
Quality Assurance Build

United States Department of Health and Human Services

11



National Center for Chronic Disease Prevention and Health Promotion

# PREVENTION RESEARCH CENTERS

PRC Information System

\* Required  
+ Performance Indicator  
Help

### PRC IS

#### My PRC

- [Center Information](#)
- [Projects](#)
- [Products](#)
- [Required Reports](#)

#### Log-Out

## State University of New York at Albany Prevention Research Center

2005-2006

### Add Work Plan Objective

### Relationship to Collaboration and Partnership Goal

Select which 5-year goal the objective relates to.\*

Select one

### Objective

Briefly state the objective that supports the goal (include a measurable and specific intended outcome).\*

*No changes*

#### CENTER INFORMATION

[General Information](#)

[5-Year Goals](#)

[Annual Work Plan](#)

[Center Staff](#)

[Community Committees](#)

[National Community Committee \(NCC\) Representatives](#)

[Partners](#)

[Health Priorities](#)

[Research Agenda](#)

[Evaluation Plan](#)

Expected date of completion  (yyyy)

Status

### Anticipated Challenges

Briefly describe any anticipated challenges and the plans to address them.\*



[Privacy Policy](#) | [Accessibility](#)

[PRC Home](#) | [News](#) | [Contact Us](#)

[CDC Home](#) | [Search](#) | [Health Topics A-Z](#)

This page was last reviewed on 3/13/2006  
Quality Assurance Build

United States Department of Health and Human Services

*12*



**PRC IS**

**My PRC**

- [Center Information](#)
- [Projects](#)
- [Products](#)
- [Required Reports](#)

**Log-Out**

**State University of New York at Albany  
Prevention Research Center**

**2005-2006**

**Add Work Plan Objective**

**Relationship to Communication and Dissemination Goal**

Select which 5-year goal the objective relates to.

Select one

*No changes*

**Objective**

Briefly state the objective that supports the goal (include a measurable and specific intended outcome).\*

Expected date of completion: Select one [dropdown] (yyyy)

Status:





National Center for Chronic Disease Prevention and Health Promotion

# PREVENTION RESEARCH CENTERS

PRC Information System

\* Required  
+ Performance Indicator  
Help

### PRC IS

#### My PRC

- [Center Information](#)
- [Projects](#)
- [Products](#)
- [Required Reports](#)

#### Log-Out

## State University of New York at Albany Prevention Research Center

2005-2006

### Add Work Plan Objective

### Relationship to Infrastructure Goal

Select which 5-year goal the objective relates to.

Select one

*No changes*

### Objective

Briefly state the objective that supports the goal (include a measurable and specific intended outcome).\*

### CENTER INFORMATION

[General Information](#)

[5-Year Goals](#)

[Annual Work Plan](#)

[Center Staff](#)

[Community Committees](#)

[National Community Committee \(NCC\) Representatives](#)

[Partners](#)

[Health Priorities](#)

[Research Agenda](#)

[Evaluation Plan](#)

Expected date of completion

Select one

(yyyy)

Status\*

Select one

### Anticipated Challenges

Briefly describe any anticipated challenges and the plans to address them.\*



[Privacy Policy](#) | [Accessibility](#)

[PRC Home](#) | [News](#) | [Contact Us](#)

[CDC Home](#) | [Search](#) | [Health Topics A-Z](#)

This page was last reviewed on 3/13/2006  
Quality Assurance Build

United States Department of Health and Human Services

14



National Center for Chronic Disease Prevention and Health Promotion

# PREVENTION RESEARCH CENTERS

PRC Information System



\* Required  
+ Performance Indicator  
Help

### PRC IS

#### My PRC

- [Center Information](#)
- [Projects](#)
- [Products](#)
- [Required Reports](#)

#### Log-Out

## State University of New York at Albany Prevention Research Center

2005-2006

### Add Work Plan Objective

### Relationship to Training and Education Goal

Select which 5-year goal the objective relates to.

Select one

*No changes*

### Objective

Briefly state the objective that supports the goal (include a measurable and specific intended outcome).\*

Expected date of completion      Select one      (yyyy)

Status      Select one

### Anticipated Challenges

Briefly describe any anticipated challenges and the plans to address them.\*



### CENTER INFORMATION

- [General Information](#)
- [5-Year Goals](#)
- [Annual Work Plan](#)
- [Center Staff](#)
- [Community Committees](#)
- [National Community Committee \(NCC\) Representatives](#)
- [Partners](#)
- [Health Priorities](#)
- [Research Agenda](#)
- [Evaluation Plan](#)

[Privacy Policy](#) | [Accessibility](#)

[PRC Home](#) | [News](#) | [Contact Us](#)

[CDC Home](#) | [Search](#) | [Health Topics A-Z](#)

This page was last reviewed on 3/13/2006  
Quality Assurance Build

United States Department of Health and Human Services

15



National Center for Chronic Disease Prevention and Health Promotion

# PREVENTION RESEARCH CENTERS

PRC Information System

\* Required  
+ Performance Indicator  
Help

- PRC IS**  
**My PRC**
- Center Information
  - Projects
  - Products
  - Required Reports
- Log-Out

## State University of New York at Albany Prevention Research Center

2005-2006

### Add Staff Person

Select from staff

- OR - Enter a new staff person below.

### CENTER INFORMATION

- General Information
- 5-Year Goals
- Annual Work Plan
- Center Staff
- Community Committees
- National Community Committee (NCC) Representatives
- Partners
- Health Priorities
- Research Agenda
- Evaluation Plan

*NO changes*

First name

Middle name

Last name

Degrees

Affiliation\*

Telephone\*

Ext.

Fax

E-mail\*

### Roles

Which roles does the staff person have at the center level?\*

- |  |   |
|--|---|
| <input type="checkbox"/> Director                  | <input type="checkbox"/> Communications contact     |
| <input type="checkbox"/> Principal investigator    | <input type="checkbox"/> Data manager               |
| <input type="checkbox"/> Co-principal investigator | <input type="checkbox"/> Evaluation lead            |
| <input type="checkbox"/> Co-director               | <input type="checkbox"/> Information system contact |
| <input type="checkbox"/> Deputy director           | <input type="checkbox"/> Graduate Student           |
| <input type="checkbox"/> Investigator              | <input type="checkbox"/> Research Coordinator       |
| <input type="checkbox"/> Research scientist        | <input type="checkbox"/> Other (specify below)      |
| <input type="checkbox"/> Administrative support    |   |

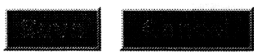
### Staff Person Participation

In which of these activities is the staff person most likely to participate?\*

- Evaluation
- Collaborations and partnerships

16

- Research
- Communication and dissemination
- Infrastructure
- Training and education
- Not applicable



---

[Privacy Policy](#) | [Accessibility](#)

[PRC Home](#) | [News](#) | [Contact Us](#)

[CDC Home](#) | [Search](#) | [Health Topics A-Z](#)

This page was last reviewed on 10/17/2005  
Quality Assurance Build

[United States Department of Health and Human Services](#)  
[Centers for Disease Control and Prevention](#)  
[National Center for Chronic Disease Prevention and Health Promotion](#)  
[Division of Adult and Community Health](#)

17



National Center for Chronic Disease Prevention and Health Promotion

# PREVENTION RESEARCH CENTERS

PRC Information System



\* Required  
+ Performance Indicator  
Help

### PRC IS

#### My PRC

- [Center Information](#)
- [Projects](#)
- [Products](#)
- [Required Reports](#)

#### Log-Out

## State University of New York at Albany Prevention Research Center

2005-2006

### Add Community Committee

Select from committees

- OR - Enter a new community committee below.

#### CENTER INFORMATION

- [General Information](#)
- [5-Year Goals](#)
- [Annual Work Plan](#)
- [Center Staff](#)
- [Community Committees](#)
- [National Community Committee \(NCC\) Representatives](#)
- [Partners](#)
- [Health Priorities](#)
- [Research Agenda](#)
- [Evaluation Plan](#)

*No changes*

Committee Name

When was this community committee established?\*

Select one (yyyy)

Number of members?\*

### Committee Composition

Which perspectives do the committee members bring to the center?\*

- |  |  |
|--|--|
| <input type="checkbox"/> Academia  | <input type="checkbox"/> Indian Health Service (IHS)                   |
| <input type="checkbox"/> Advocate of health issue                        | <input type="checkbox"/> Labor union                                   |
| <input type="checkbox"/> Business sector                                 | <input type="checkbox"/> Managed care                                  |
| <input type="checkbox"/> Community coalition                             | <input type="checkbox"/> Media   |
| <input type="checkbox"/> Community health center or clinic               | <input type="checkbox"/> National nonprofit organization               |
| <input type="checkbox"/> Community resident                              | <input type="checkbox"/> Public health practitioner                    |
| <input type="checkbox"/> Community-based organization                    | <input type="checkbox"/> Research center                               |
| <input type="checkbox"/> County or local government agency               | <input type="checkbox"/> School or school-based organization           |
| <input type="checkbox"/> County or local health department               | <input type="checkbox"/> State government agency                       |
| <input type="checkbox"/> Cultural organization                           | <input type="checkbox"/> State health department                       |
| <input type="checkbox"/> Environmental agency                            | <input type="checkbox"/> State; county or local nonprofit organization |
| <input type="checkbox"/> Faith-based organization                        | <input type="checkbox"/> Training center                               |
| <input type="checkbox"/> Federal government agency                       | <input type="checkbox"/> Tribal government agency                      |
| <input type="checkbox"/> Foundation                                      | <input type="checkbox"/> Tribal health department                      |
| <input type="checkbox"/> Healthcare or medical professional organization | <input type="checkbox"/> Youth agency                                  |
| <input type="checkbox"/> Healthcare provider                             | <input type="checkbox"/> Other (specify below)                         |
| <input type="checkbox"/> Hospital  |  |

18

**Activities**

In which center activities is the community committee engaged?

\*+

- Identifying national; regional; or local health priorities and health disparities within the partnering community
- Facilitating communication and collaboration between the center and the partnering community or other partners
- Establishing the center research agenda
- Identifying or approving research projects to be implemented in the community
- Developing or implementing the center evaluation activities
- Developing or implementing the center training; technical assistance; and mentoring activities
- Developing or implementing the center communication and dissemination activities
- Conducting advocacy activities
- Providing or obtaining funding
- Other (specify below)

**Committee Guidelines**

To upload a copy of the committee guidelines, enter the entire path of the guidelines file or click the 'Browse' button. +

Entire path and file name

Date guidelines last revised?  (mm/dd/yyyy)

Can the guidelines be shared with other PRCs?

Yes  No



[Privacy Policy](#) | [Accessibility](#)

[PRC Home](#) | [News](#) | [Contact Us](#)

[CDC Home](#) | [Search](#) | [Health Topics A-Z](#)

This page was last reviewed on 10/17/2005  
Quality Assurance Build

[United States Department of Health and Human Services](#)  
[Centers for Disease Control and Prevention](#)  
[National Center for Chronic Disease Prevention and Health Promotion](#)  
[Division of Adult and Community Health](#)

19



National Center for Chronic Disease Prevention and Health Promotion

# PREVENTION RESEARCH CENTERS

PRC Information System



\* Required  
+ Performance Indicator  
Help

- PRC IS**
- My PRC
- Center Information
  - Projects
  - Products
  - Required Reports
- Log-Out

## State University of New York at Albany Prevention Research Center

2005-2006

### Add National Community Committee (NCC) Representative

#### CENTER INFORMATION

- General Information
- 5-Year Goals
- Annual Work Plan
- Center Staff
- Community Committees
- National Community Committee (NCC) Representatives
- Partners
- Health Priorities
- Research Agenda
- Evaluation Plan

First name

Middle name

Last name\*

Affiliation\*

Telephone    Ext.

Fax

E-mail\*

Type\*  Primary  Alternate

*No changes*

[Privacy Policy](#) | [Accessibility](#)

[PRC Home](#) | [News](#) | [Contact Us](#)

[CDC Home](#) | [Search](#) | [Health Topics A-Z](#)

This page was last reviewed on 10/26/2005  
Quality Assurance Build

United States Department of Health and Human Services  
Centers for Disease Control and Prevention  
National Center for Chronic Disease Prevention and Health Promotion  
Division of Adult and Community Health

20



National Center for Chronic Disease Prevention and Health Promotion

# PREVENTION RESEARCH CENTERS

PRC Information System



\* Required  
+ Performance Indicator Help

- PRC IS**
- My PRC**
- [Center Information](#)
  - [Projects](#)
  - [Products](#)
  - [Required Reports](#)
- Log-Out**

## State University of New York at Albany Prevention Research Center

2005-2006

### Add Partner

Partner type\*+  Individual  Organization

If organization, enter name

When was this partnership established?\*+

Select one  (yyyy)

How would the center and partner characterize their relationship?+

Select one

② Delete

### Perspectives

Which perspectives does the partner bring to the center?\*+

- |  |  |
|--|--|
| <input type="checkbox"/> Academia  | <input type="checkbox"/> Indian Health Service (IHS)                   |
| <input type="checkbox"/> Advocate of health issue                        | <input type="checkbox"/> Labor union                                   |
| <input type="checkbox"/> Business sector                                 | <input type="checkbox"/> Managed care                                  |
| <input type="checkbox"/> Community coalition                             | <input type="checkbox"/> Media   |
| <input type="checkbox"/> Community health center or clinic               | <input type="checkbox"/> National nonprofit organization               |
| <input type="checkbox"/> Community resident                              | <input type="checkbox"/> Public health practitioner                    |
| <input type="checkbox"/> Community-based organization                    | <input type="checkbox"/> Research center                               |
| <input type="checkbox"/> County or local government agency               | <input type="checkbox"/> School or school-based organization           |
| <input type="checkbox"/> County or local health department               | <input type="checkbox"/> State government agency                       |
| <input type="checkbox"/> Cultural organization                           | <input type="checkbox"/> State health department                       |
| <input type="checkbox"/> Environmental agency                            | <input type="checkbox"/> State; county or local nonprofit organization |
| <input type="checkbox"/> Faith-based organization                        | <input type="checkbox"/> Training center                               |
| <input type="checkbox"/> Federal government agency                       | <input type="checkbox"/> Tribal government agency                      |
| <input type="checkbox"/> Foundation                                      | <input type="checkbox"/> Tribal health department                      |
| <input type="checkbox"/> Healthcare or medical professional organization | <input type="checkbox"/> Youth agency                                  |
| <input type="checkbox"/> Healthcare provider                             | <input type="checkbox"/> Other (specify below)                         |
| <input type="checkbox"/> Hospital  |  |

### Activities

In which center activities is the partner engaged?\*+

- CENTER INFORMATION**
- [General Information](#)
  - [5-Year Goals](#)
  - [Annual Work Plan](#)
  - [Center Staff](#)
  - [Community Committees](#)
  - [National Community Committee \(NCC\) Representatives](#)
  - [Partners](#)
  - [Health Priorities](#)
  - [Research Agenda](#)
  - [Evaluation Plan](#)

21



- Identifying national; regional; or local health priorities and health disparities within the partnering community
- Facilitating communication and collaboration between the center and the partnering community or other partners
- Establishing the center research agenda
- Identifying or approving research projects to be implemented in the community
- Developing or implementing the center evaluation activities
- Developing or implementing the center training; technical assistance; and mentoring activities
- Developing or implementing the center communication and dissemination activities
- Conducting advocacy activities
- Providing or obtaining funding
- Other (specify below)




---

[Privacy Policy](#) | [Accessibility](#)

[PRC Home](#) | [News](#) | [Contact Us](#)

[CDC Home](#) | [Search](#) | [Health Topics A-Z](#)

This page was last reviewed on 10/26/2005  
Quality Assurance Build

[United States Department of Health and Human Services](#)  
[Centers for Disease Control and Prevention](#)  
[National Center for Chronic Disease Prevention and Health Promotion](#)  
[Division of Adult and Community Health](#)

22



\* Required  
+ Performance Indicator  
Help

**PRC IS**

**My PRC**

- [Center Information](#)
- [Projects](#)
- [Products](#)
- [Required Reports](#)

**Log-Out**

3

Delete

**State University of New York at Albany  
Prevention Research Center**

2005-2006

**Add Health Priority**

**CENTER INFORMATION**

Enter one of the center's health priorities.

General Information

Health priority\*+

[5-Year Goals](#)

[Annual Work Plan](#)

How did the idea for this health priority originate?\*

[Center Staff](#)

[Community Committees](#)

[National Community Committee \(NCC\) Representatives](#)

[Partners](#)

~~[Health Priorities](#)~~

[Research Agenda](#)

[Evaluation Plan](#)

**Data Sources and Documents**

Which data sources and documents were used to support the prioritization of this topic?\*

**National data sources and documents**

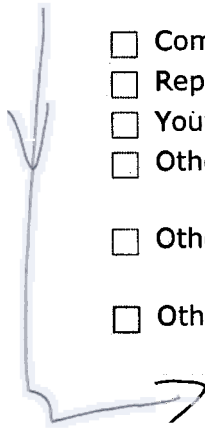
- Behavioral Risk Factor Survey Surveillance (BRFSS)
- Centers for Medicare and Medicaid Services (CMS)
- Guide to Clinical Preventive Services recommendations
- Guide to Community Preventive Services recommendations
- Health Plan Employer Data and Information Sets (HEDIS)
- Healthy People 2010
- National Ambulatory Medical Care Survey
- National Health and Nutrition Examination Survey (NHANES)
- National Health Interview Survey (NHIS)
- National Hospital Discharge Survey (NHDS)
- Peer Review Organization/Quality Improvement Organization
- Pregnancy Risk Assessment Monitoring System (PRAMS)
- Technical report national agency
- U.S. Bureau of Census Data
- Vital Statistics
- Youth Risk Behavior Surveillance System (YRBSS)
- Other published report or review document (specify below)
- Other (specify below)

**State, county or local data sources and documents**

- Behavioral Risk Factor Survey Surveillance (BRFSS)

23

3



- Community needs or assets assessment conducted by PRC
- Report or data provided by the partnering community
- Youth Risk Behavior Surveillance System (YRBSS)
- Other state report (specify below)
  
- Other local report (specify below)
  
- Other (specify below)

---

[Privacy Policy](#) | [Accessibility](#)

[PRC Home](#) | [News](#) | [Contact Us](#)

[CDC Home](#) | [Search](#) | [Health Topics A-Z](#)

This page was last reviewed on 10/17/2005  
Quality Assurance Build

[United States Department of Health and Human Services](#)  
[Centers for Disease Control and Prevention](#)  
[National Center for Chronic Disease Prevention and Health Promotion](#)  
[Division of Adult and Community Health](#)

24



National Center for Chronic Disease Prevention and Health Promotion

# PREVENTION RESEARCH CENTERS

PRC Information System

\* Required  
+ Performance Indicator Help

### PRC IS

#### My PRC

- [Center Information](#)
- [Projects](#)
- [Products](#)
- [Required Reports](#)

[Log-Out](#)

4  
Delete

**State University of New York at Albany  
Prevention Research Center**

### Edit Research Agenda

### Overall Research Agenda

Briefly describe the overall center research agenda.\*+

### Partner Involvement

In which research agenda activities were the partners involved? \*+

- Assessing the needs or assets of the partnering community
- Communicating the research agenda to the community or partners
- Identifying or selecting research topics
- Planning the research agenda
- Other (specify below)

### Evidence of Partner Input

Where can evidence be found of partner input into the activities listed above? \*+

- |  |  |
|--|--|
| <input type="checkbox"/> Letters of support          | <input type="checkbox"/> Retreat summary       |
| <input type="checkbox"/> Meeting minutes             | <input type="checkbox"/> Other (specify below) |
| <input type="checkbox"/> Memorandum of understanding |  |

2005-2006

#### CENTER INFORMATION

##### General Information

- [5-Year Goals](#)
- [Annual Work Plan](#)
- [Center Staff](#)

##### Community Committees

##### National Community Committee (NCC) Representatives

##### Partners

##### Health Priorities

##### Research Agenda

##### Evaluation Plan

[Privacy Policy](#) | [Accessibility](#)

[PRC Home](#) | [News](#) | [Contact Us](#)

[CDC Home](#) | [Search](#) | [Health Topics A-Z](#)

This page was last reviewed on 10/17/2005  
Quality Assurance Build

United States Department of Health and Human Services  
Centers for Disease Control and Prevention  
National Center for Chronic Disease Prevention and Health Promotion  
Division of Adult and Community Health

25



National Center for Chronic Disease Prevention and Health Promotion

# PREVENTION RESEARCH CENTERS

PRC Information System



\* Required  
+ Performance Indicator  
Help

### PRC IS

#### My PRC

- [Center Information](#)
- [Projects](#)
- [Products](#)
- [Required Reports](#)

#### Log-Out

## State University of New York at Albany Prevention Research Center

2005-2006

### CENTER INFORMATION

- [General Information](#)
- [5-Year Goals](#)
- [Annual Work Plan](#)
- [Center Staff](#)
- [Community Committees](#)
- [National Community Committee \(NCC\) Representatives](#)
- [Partners](#)
- [Health Priorities](#)
- [Research Agenda](#)
- [Evaluation Plan](#)

### Edit Evaluation Plan

#### Community Committee Involvement

In which center evaluation plan activities is the community committee involved?\*

- Collecting data for the evaluation
- Communicating results to the community or partners
- Communicating results in publications or presentations
- Developing or refining the PRC logic model
- Developing the evaluation plan
- Recruiting or engaging other partners in implementing the evaluation
- Recruiting or engaging other partners in planning the evaluation
- Other (specify below)

5  
Delete

#### Evidence of Community Committee Input

Where can evidence be found of community committee input into the center evaluation plan?\*

- Letters of support
- Meeting minutes
- Memorandum of understanding
- Retreat summary
- Other (specify below)

#### Evaluation Plan

To upload a copy of the center evaluation plan, enter the entire path of the evaluation plan file or click the 'Browse' button.\*

Entire path and file name

Date evaluation plan last revised  (mm/dd/yyyy)

Can the evaluation plan be shared with other PRCs?

Yes  No

#### Evaluation Plan Files

| Name                        | Size  | Revised    | Share | Delete                   |
|-----------------------------|-------|------------|-------|--------------------------|
| UAlbany_draft_eval_plan.pdf | 155 K | 02/28/2004 | N     | <input type="checkbox"/> |

#### Logic Model

26

To upload a copy of the center logic model and narrative, enter the entire path of the file or click the 'Browse' button.\*+

Entire path and file name

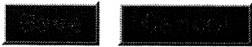
Date logic model last revised  (mm/dd/yyyy)

Can the logic model be shared with other PRCs?

Yes  No

**Logic Model Files**

| Name                                      | Size | Revised    | Share | Delete                   |
|---|------|------------|-------|--------------------------|
| <a href="#">our logic model_final.pdf</a> | 15 K | 05/05/2004 | Y     | <input type="checkbox"/> |



[Privacy Policy](#) | [Accessibility](#)

[PRC Home](#) | [News](#) | [Contact Us](#)

[CDC Home](#) | [Search](#) | [Health Topics A-Z](#)

This page was last reviewed on 10/17/2005  
Quality Assurance Build

[United States Department of Health and Human Services](#)  
[Centers for Disease Control and Prevention](#)  
[National Center for Chronic Disease Prevention and Health Promotion](#)  
[Division of Adult and Community Health](#)

27

# Prevention Research Centers PRC Information System

Left and right menus – How the PRC IS will look with the revised Center Information Section

---

**PRC IS**

**My PRC**

- Center Information
- Project
- Products
- Trainings
- Required Reports

**Log-out**

*Data Entry fields will go here*

**Center Information**

General Information

5-Year Goals

Annual Work Plan

Center Staff

Community Committees

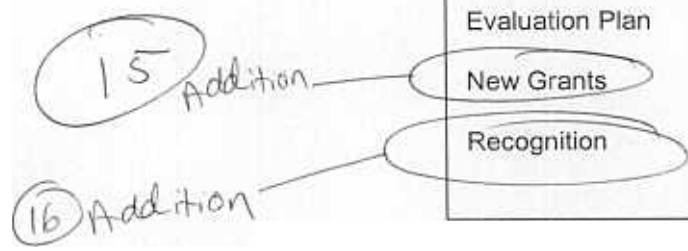
National Community Committee (NCC) Representatives

Partners

Evaluation Plan

New Grants

Recognition



# **Prevention Research Centers PRC Information System**

## **Project Section**

*Project*





National Center for Chronic Disease Prevention and Health Promotion

# PREVENTION RESEARCH CENTERS

PRC Information System

\* Required  
+ Performance Indicator Help

## PRC IS

### My PRC

- [Center Information](#)
- [Projects](#)
- [Products](#)
- [Required Reports](#)

### Log-Out

## State University of New York at Albany Prevention Research Center

2005-2006

### Educational Resources Video Project

#### Edit General Information

**Title\*** Educational Resources Video Project

**Principal investigator**

**Type** Other Project

**Start date\*** June 2005

**End date** November 2005

#### Is the project a research project?\*

Yes  No

If yes, indicate the type of research.

- Determinant                       Intervention  
 Dissemination                       Other (specify below)

If yes, indicate level of prevention.

- Primordial                       Tertiary  
 Primary                       Other (specify below)  
 Secondary

#### Project description

Briefly describe the project.

**PROJECT**

- [General Information](#)
- [Project Goals](#)
- [Annual Work Plan](#)
- [Contacts](#)
- [Funding](#)
- [Data Sources & Focus Areas](#)
- [Population Studied](#)
- [Keywords](#)
- [Community Committees](#)
- [Partners](#)
- [Outcomes & Advances](#)
- [Products](#)



[Privacy Policy](#) | [Accessibility](#)

[PRC Home](#) | [News](#) | [Contact Us](#)

[CDC Home](#) | [Search](#) | [Health Topics A-Z](#)

29



National Center for Chronic Disease Prevention and Health Promotion

# PREVENTION RESEARCH CENTERS

PRC Information System

\* Required  
+ Performance Indicator  
Help

### PRC IS

#### My PRC

- [Center Information](#)
- [Projects](#)
- [Products](#)
- [Required Reports](#)

#### Log-Out

*No changes*

**State University of New York at Albany  
Prevention Research Center**

**2005-2006**

### Educational Resources Video Project

### Add Project Goal

### Goal Statement

Briefly describe one of the project goals.\*

**Expected date of completion\***  (yyyy)

**Status\***



### PROJECT

[General Information](#)

[Project Goals](#)

[Annual Work Plan](#)

[Contacts](#)

[Funding](#)

[Data Sources &  
Focus Areas](#)

[Population Studied](#)

[Keywords](#)

[Community  
Committees](#)

[Partners](#)

[Outcomes &  
Advances](#)

[Products](#)

[Privacy Policy](#) | [Accessibility](#)

[PRC Home](#) | [News](#) | [Contact Us](#)

[CDC Home](#) | [Search](#) | [Health Topics A-Z](#)

This page was last reviewed on 10/17/2005  
Quality Assurance Build

[United States Department of Health and Human Services](#)  
[Centers for Disease Control and Prevention](#)  
[National Center for Chronic Disease Prevention and Health Promotion](#)  
[Division of Adult and Community Health](#)

30



National Center for Chronic Disease Prevention and Health Promotion

# PREVENTION RESEARCH CENTERS

PRC Information System



\* Required  
+ Performance Indicator  
Help

2005-2006

## PRC IS My PRC

- [Center Information](#)
- [Projects](#)
- [Products](#)
- [Required Reports](#)

[Log-Out](#)

*No changes*

## State University of New York at Albany Prevention Research Center

### Educational Resources Video Project

### Add Work Plan Objective

### Relationship to Project Goal

Select which project goal the objective relates to.

Select one

### Objective

Briefly state the objective that supports the goal (include a measurable and specific intended outcome).\*

Expected date of completion:  (yyyy)

Status\*:

### Anticipated Challenges

Briefly describe any anticipated challenges and the plans to address them.\*



**PROJECT**

- [General Information](#)
- [Project Goals](#)
- [Annual Work Plan](#)
- [Contacts](#)
- [Funding](#)
- [Data Sources & Focus Areas](#)
- [Population Studied](#)
- [Keywords](#)
- [Community Committees](#)
- [Partners](#)
- [Outcomes & Advances](#)
- [Products](#)

[Privacy Policy](#) | [Accessibility](#)

[PRC Home](#) | [News](#) | [Contact Us](#)

[CDC Home](#) | [Search](#) | [Health Topics A-Z](#)

This page was last reviewed on 3/13/2006  
Quality Assurance Build

3/



National Center for Chronic Disease Prevention and Health Promotion

# PREVENTION RESEARCH CENTERS

PRC Information System



\* Required  
+ Performance Indicator Help

### PRC IS

#### My PRC

- [Center Information](#)
- [Projects](#)
- [Products](#)
- [Required Reports](#)

#### Log-Out

## State University of New York at Albany Prevention Research Center

2005-2006

### Educational Resources Video Project

#### Add Project Contact

### PROJECT

[General Information](#)

[Project Goals](#)

[Annual Work Plan](#)

[Contacts](#)

[Funding](#)

[Data Sources & Focus Areas](#)

[Population Studied](#)

[Keywords](#)

[Community Committees](#)

[Partners](#)

[Outcomes & Advances](#)

[Products](#)

*No changes*

Select from project contacts

- OR - Enter a new project contact below

First name\*

Middle name

Last name\*

Degrees

Affiliation\*

Telephone\*

Ext.

Fax

E-mail\*

Contact Type

Select one

#### Roles

Which role does the staff person have at the project level?\*

- |  |  |
|--|--|
| <input type="checkbox"/> Principal investigator    | <input type="checkbox"/> Project manager       |
| <input type="checkbox"/> Co-principal investigator | <input type="checkbox"/> Research Coordinator  |
| <input type="checkbox"/> Investigator              | <input type="checkbox"/> Graduate Student      |
| <input type="checkbox"/> Project director          | <input type="checkbox"/> Other (specify below) |



[Privacy Policy](#) | [Accessibility](#)

[PRC Home](#) | [News](#) | [Contact Us](#)

[CDC Home](#) | [Search](#) | [Health Topics A-Z](#)

This page was last reviewed on 10/17/2005  
Quality Assurance Build



[CDC Home](#)

[Search](#)

[Health Topics A-Z](#)

National Center for Chronic Disease Prevention and Health Promotion

# PREVENTION RESEARCH CENTERS

PRC Information System



\* Required  
+ Performance Indicator  
Help

## PRC IS

### My PRC

- [Center Information](#)
- [Projects](#)
- [Products](#)
- [Required Reports](#)

### Log-Out

No changes

**State University of New York at Albany  
Prevention Research Center**

**Educational Resources Video Project**

**Add Funding Source**

**Source of funding\***

Select one

If source above is 'Other', specify below

**Yearly amount**

Enter the amount of yearly funding dollars.

██████████ ██████████

2005-2006

## PROJECT

[General Information](#)

[Project Goals](#)

[Annual Work Plan](#)

[Contacts](#)

[Funding](#)

[Data Sources &  
Focus Areas](#)

[Population Studied](#)

[Keywords](#)

[Community  
Committees](#)

[Partners](#)

[Outcomes &  
Advances](#)

[Products](#)

[Privacy Policy](#) | [Accessibility](#)

[PRC Home](#) | [News](#) | [Contact Us](#)

[CDC Home](#) | [Search](#) | [Health Topics A-Z](#)

This page was last reviewed on 10/17/2005  
Quality Assurance Build

United States Department of Health and Human Services  
Centers for Disease Control and Prevention  
National Center for Chronic Disease Prevention and Health Promotion  
Division of Adult and Community Health

33



National Center for Chronic Disease Prevention and Health Promotion

# PREVENTION RESEARCH CENTERS

PRC Information System



\* Required  
+ Performance Indicator Help

### PRC IS

#### My PRC

- [Center Information](#)
- [Projects](#)
- [Products](#)
- [Required Reports](#)

#### Log-Out

## State University of New York at Albany Prevention Research Center

### Educational Resources Video Project

### Edit Data Sources & Focus Areas

2005-2006

#### PROJECT

- [General Information](#)
- [Project Goals](#)
- [Annual Work Plan](#)
- [Contacts](#)
- [Funding](#)
- ~~[Data Sources & Focus Areas](#)~~
- [Population Studied](#)
- [Keywords](#)
- [Community Committees](#)
- [Partners](#)
- [Outcomes & Advances](#)
- [Products](#)

#### Data Sources

Which data sources were used to support the development of the project?

- Guide to Clinical Preventive Services
- Guide to Community Preventive Services
- Healthy People 2010
- Other national data source (specify below)
  
- Other state data source (specify below)
  
- Other local data source (specify below)

6  
Delete

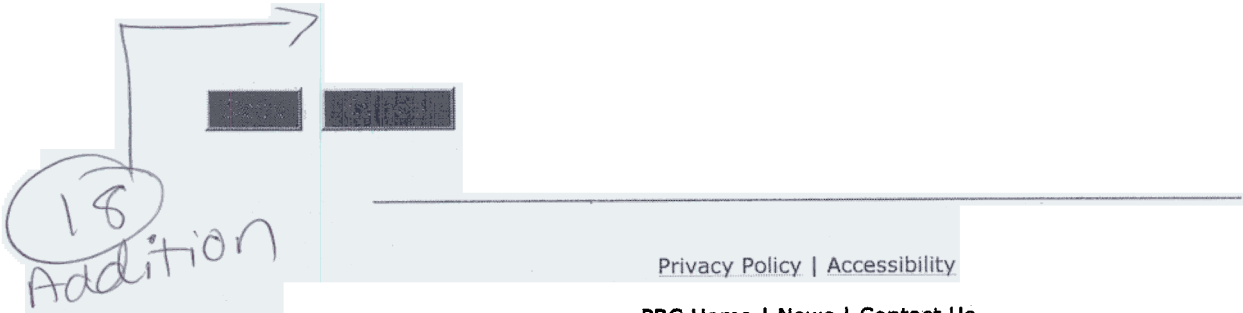
#### Focus areas

Which focus areas relate to the project (as listed in Healthy People 2010, Guide to Clinical Preventive Services, and Guide to Community Preventive Services)?\*

- |   |   |
|---|---|
| <input type="checkbox"/> Access to quality care                           | <input type="checkbox"/> Medical product safety           |
| <input type="checkbox"/> Arthritis; osteoporosis; chronic back conditions | <input type="checkbox"/> Mental health and mental illness |
| <input type="checkbox"/> Cancer   | <input type="checkbox"/> Nutrition and overweight         |
| <input type="checkbox"/> Chronic kidney disease                           | <input type="checkbox"/> Occupational safety and health   |
| <input type="checkbox"/> Diabetes   | <input type="checkbox"/> Oral Health                      |
| <input type="checkbox"/> Disability and secondary conditions              | <input type="checkbox"/> Physical fitness and activity    |
| <input type="checkbox"/> Educational and community-based programs         | <input type="checkbox"/> Public health infrastructure     |
| <input type="checkbox"/> Environmental health                             | <input type="checkbox"/> Respiratory diseases             |
| <input type="checkbox"/> Family planning                                  | <input type="checkbox"/> Sexually transmitted diseases    |
| <input type="checkbox"/> Food safety                                      | <input type="checkbox"/> Social determinants              |
| <input type="checkbox"/> Health communication                             | <input type="checkbox"/> Substance abuse                  |

34

- Heart disease and stroke
- Human Immunodeficiency Virus (HIV)
- Immunization and infectious diseases
- Injury and violence prevention
- Maternal; infant; child health
- Tobacco use
- Vision and hearing
- Other national focus area (specify below)
- Other state focus area (specify below)
- Other local focus area (specify below)



[Privacy Policy](#) | [Accessibility](#)

[PRC Home](#) | [News](#) | [Contact Us](#)

[CDC Home](#) | [Search](#) | [Health Topics A-Z](#)

This page was last reviewed on 10/17/2005  
Quality Assurance Build

United States Department of Health and Human Services  
[Centers for Disease Control and Prevention](#)  
[National Center for Chronic Disease Prevention and Health Promotion](#)  
[Division of Adult and Community Health](#)

35



National Center for Chronic Disease Prevention and Health Promotion

# PREVENTION RESEARCH CENTERS

PRC Information System



\* Required  
+ Performance Indicator Help

### PRC IS

#### My PRC

- [Center Information](#)
- [Projects](#)
- [Products](#)
- [Required Reports](#)

#### Log-Out

## State University of New York at Albany Prevention Research Center

2005-2006

### Educational Resources Video Project

### Edit Population Studied

Which of the following best characterizes the sample population of the project?

#### Ethnicity\*

- |   |   |
|---|---|
| <input type="checkbox"/> Hispanic or Latino     | <input type="checkbox"/> Unknown at this time           |
| <input type="checkbox"/> Not Hispanic or Latino | <input type="checkbox"/> No specific focus on ethnicity |

#### Race\* (Check all that apply)

- |  |  |
|--|--|
| <input type="checkbox"/> African American or Black                 | <input type="checkbox"/> White                     |
| <input type="checkbox"/> American Indian or Alaska Native          | <input type="checkbox"/> Unknown at this time      |
| <input type="checkbox"/> Asian                                     | <input type="checkbox"/> No specific focus on race |
| <input type="checkbox"/> Native Hawaiian or Other Pacific Islander |  |

#### Age group\*

- |                                     |   |
|-------------------------------------|---|
| <input type="checkbox"/> Infant     | <input type="checkbox"/> Older adult                    |
| <input type="checkbox"/> Child      | <input type="checkbox"/> Unknown at this time           |
| <input type="checkbox"/> Adolescent | <input type="checkbox"/> No specific focus on age group |
| <input type="checkbox"/> Adult      | <input type="checkbox"/> Other (specify below)          |

#### Sex

- |   |   |
|---|---|
| <input type="checkbox"/> Men or boys          | <input type="checkbox"/> No specific focus on sex |
| <input type="checkbox"/> Women or girls       | <input type="checkbox"/> Other (specify below)    |
| <input type="checkbox"/> Unknown at this time |   |

#### Setting or site\*

- |   |   |
|---|---|
| <input type="checkbox"/> City                     | <input type="checkbox"/> Urban area                           |
| <input type="checkbox"/> County or parish         | <input type="checkbox"/> Worksite                             |
| <input type="checkbox"/> Medical or clinical site | <input type="checkbox"/> Unknown at this time                 |
| <input type="checkbox"/> Rural Area               | <input type="checkbox"/> No specific focus on setting or site |
| <input type="checkbox"/> School                   | <input type="checkbox"/> Other (specify below)                |
| <input type="checkbox"/> Tribal nation            |   |

**PROJECT**

- [General Information](#)
- [Project Goals](#)
- [Annual Work Plan](#)
- [Contacts](#)
- [Funding](#)
- [Data Sources & Focus Areas](#)
- [Population Studied](#)
- [Keywords](#)
- [Community Committees](#)
- [Partners](#)
- [Outcomes & Advances](#)
- [Products](#)

12  
modification

36



**Study sample size**

**Underlying population size**



---

[Privacy Policy](#) | [Accessibility](#)

[PRC Home](#) | [News](#) | [Contact Us](#)

[CDC Home](#) | [Search](#) | [Health Topics A-Z](#)

This page was last reviewed on 10/20/2005  
Quality Assurance Build

[United States Department of Health and Human Services](#)  
[Centers for Disease Control and Prevention](#)  
[National Center for Chronic Disease Prevention and Health Promotion](#)  
[Division of Adult and Community Health](#)



National Center for Chronic Disease Prevention and Health Promotion

# PREVENTION RESEARCH CENTERS

PRC Information System



\* Required  
+ Performance Indicator  
Help

- PRC IS**
- My PRC**
- [Center Information](#)
  - [Projects](#)
  - [Products](#)
  - [Required Reports](#)
- Log-Out**

**State University of New York at Albany  
Prevention Research Center**

**2005-2006**

## Educational Resources Video Project

### Add Keyword

To search for CDC keywords, enter three or more letters of a word and click 'Search' button.

Search phrase

*No changes*

- PROJECT**
- [General Information](#)
  - [Project Goals](#)
  - [Annual Work Plan](#)
  - [Contacts](#)
  - [Funding](#)
  - [Data Sources & Focus Areas](#)
  - [Population Studied](#)
  - [Keywords](#)
  - [Community Committees](#)
  - [Partners](#)
  - [Outcomes & Advances](#)
  - [Products](#)

[Privacy Policy](#) | [Accessibility](#)

[PRC Home](#) | [News](#) | [Contact Us](#)

[CDC Home](#) | [Search](#) | [Health Topics A-Z](#)

This page was last reviewed on 10/17/2005  
Quality Assurance Build

United States Department of Health and Human Services  
Centers for Disease Control and Prevention  
National Center for Chronic Disease Prevention and Health Promotion  
Division of Adult and Community Health

38



**PRC IS**

**My PRC**

- [Center Information](#)
- [Projects](#)
- [Products](#)
- [Required Reports](#)

**Log-Out**

**State University of New York at Albany  
Prevention Research Center**

**2005-2006**

**Educational Resources Video Project**

**Add Community Committee**

Select from committees  
Select one

- **OR** - Enter a new community committee below.

**PROJECT**

- [General Information](#)
- [Project Goals](#)
- [Annual Work Plan](#)
- [Contacts](#)
- [Funding](#)
- [Data Sources & Focus Areas](#)
- [Population Studied](#)
- [Keywords](#)
- [Community Committees](#)
- [Partners](#)
- [Outcomes & Advances](#)
- [Products](#)

*No changes*

**Committee name**

When did the community committee and the center start working together on this project?

Select one (yyyy)

Number of members

**Committee Composition**

Which perspectives do the committee members bring to the project?

- |  |  |
|--|--|
| <input type="checkbox"/> Academia  | <input type="checkbox"/> Indian Health Service (IHS)                   |
| <input type="checkbox"/> Advocate of health issue                        | <input type="checkbox"/> Labor union                                   |
| <input type="checkbox"/> Business sector                                 | <input type="checkbox"/> Managed care                                  |
| <input type="checkbox"/> Community coalition                             | <input type="checkbox"/> Media   |
| <input type="checkbox"/> Community health center or clinic               | <input type="checkbox"/> National nonprofit organization               |
| <input type="checkbox"/> Community resident                              | <input type="checkbox"/> Public health practitioner                    |
| <input type="checkbox"/> Community-based organization                    | <input type="checkbox"/> Research center                               |
| <input type="checkbox"/> County or local government agency               | <input type="checkbox"/> School or school-based organization           |
| <input type="checkbox"/> County or local health department               | <input type="checkbox"/> State government agency                       |
| <input type="checkbox"/> Cultural organization                           | <input type="checkbox"/> State health department                       |
| <input type="checkbox"/> Environmental agency                            | <input type="checkbox"/> State; county or local nonprofit organization |
| <input type="checkbox"/> Faith-based organization                        | <input type="checkbox"/> Training center                               |
| <input type="checkbox"/> Federal government agency                       | <input type="checkbox"/> Tribal government agency                      |
| <input type="checkbox"/> Foundation                                      | <input type="checkbox"/> Tribal health department                      |
| <input type="checkbox"/> Healthcare or medical professional organization | <input type="checkbox"/> Youth agency                                  |
| <input type="checkbox"/> Healthcare provider                             | <input type="checkbox"/> Other (specify below)                         |
| <input type="checkbox"/> Hospital  |  |

39

**Activities**

In which project activities is the community committee engaged?

- Conceptualizing the project
- Selecting the project
- Establishing project goals and objectives
- Developing and planning the project
- Conducting or implementing project activities
- Evaluating the project
- Communicating or disseminating project activities and results
- Other (specify below)



---

[Privacy Policy](#) | [Accessibility](#)

[PRC Home](#) | [News](#) | [Contact Us](#)

[CDC Home](#) | [Search](#) | [Health Topics A-Z](#)

This page was last reviewed on 10/17/2005  
Quality Assurance Build

United States Department of Health and Human Services  
[Centers for Disease Control and Prevention](#)  
[National Center for Chronic Disease Prevention and Health Promotion](#)  
[Division of Adult and Community Health](#)

40



National Center for Chronic Disease Prevention and Health Promotion

# PREVENTION RESEARCH CENTERS

PRC Information System

\* Required  
+ Performance Indicator  
Help

### PRC IS

#### My PRC

- [Center Information](#)
- [Projects](#)
- [Products](#)
- [Required Reports](#)

#### Log-Out

**State University of New York at Albany  
Prevention Research Center**

### Educational Resources Video Project

#### Add Partner

Select from partners

- OR - Enter a new partner below.

Partner type\*  Individual  Organization

If organization, enter name

When did the partner and center start working together on the project?

Select one  (yyyy)

How would the center and partner characterize their relationship?

Select one

#### Perspectives

Which perspectives does the partner bring to the project?

- |  |  |
|--|--|
| <input type="checkbox"/> Academia                          | <input type="checkbox"/> Indian Health Service (IHS)                   |
| <input type="checkbox"/> Advocate of health issue          | <input type="checkbox"/> Labor union                                   |
| <input type="checkbox"/> Business sector                   | <input type="checkbox"/> Managed care                                  |
| <input type="checkbox"/> Community coalition               | <input type="checkbox"/> Media   |
| <input type="checkbox"/> Community health center or clinic | <input type="checkbox"/> National nonprofit organization               |
| <input type="checkbox"/> Community resident                | <input type="checkbox"/> Public health practitioner                    |
| <input type="checkbox"/> Community-based organization      | <input type="checkbox"/> Research center                               |
| <input type="checkbox"/> County or local government agency | <input type="checkbox"/> School or school-based organization           |
| <input type="checkbox"/> County or local health department | <input type="checkbox"/> State government agency                       |
| <input type="checkbox"/> Cultural organization             | <input type="checkbox"/> State health department                       |
| <input type="checkbox"/> Environmental agency              | <input type="checkbox"/> State; county or local nonprofit organization |
| <input type="checkbox"/> Faith-based organization          | <input type="checkbox"/> Training center                               |
| <input type="checkbox"/> Federal government agency         | <input type="checkbox"/> Tribal government agency                      |
| <input type="checkbox"/> Foundation                        | <input type="checkbox"/> Tribal health department                      |

⑦ Delete

**PROJECT**

- [General Information](#)
- [Project Goals](#)
- [Annual Work Plan](#)
- [Contacts](#)
- [Funding](#)
- [Data Sources & Focus Areas](#)
- [Population Studied](#)
- [Keywords](#)
- [Community Committees](#)
- [Partners](#)
- [Outcomes & Advances](#)
- [Products](#)

41

- Healthcare or medical professional organization
- Youth agency
- Healthcare provider
- Other (specify below)
- Hospital

**Activities**

In which project activities is the partner engaged?

- Conceptualizing the project
- Selecting the project
- Establishing project goals and objectives
- Developing and planning the project
- Conducting or implementing project activities
- Evaluating the project
- Communicating or disseminating project activities and results
- Other (specify below)



[Privacy Policy](#) | [Accessibility](#)

[PRC Home](#) | [News](#) | [Contact Us](#)

[CDC Home](#) | [Search](#) | [Health Topics A-Z](#)

This page was last reviewed on 10/17/2005  
Quality Assurance Build

United States Department of Health and Human Services  
Centers for Disease Control and Prevention  
National Center for Chronic Disease Prevention and Health Promotion  
Division of Adult and Community Health

42



National Center for Chronic Disease Prevention and Health Promotion

# PREVENTION RESEARCH CENTERS

PRC Information System

\* Required  
+ Performance Indicator Help

## PRC IS

### My PRC

- [Center Information](#)
- [Projects](#)
- [Products](#)
- [Required Reports](#)

### Log-Out

State University of New York at Albany  
Prevention Research Center

## Educational Resources Video Project

## Edit Outcomes & Advances

2005-2006

### PROJECT

- [General Information](#)
- [Project Goals](#)
- [Annual Work Plan](#)
- [Contacts](#)
- [Funding](#)
- [Data Sources & Focus Areas](#)
- [Population Studied](#)
- [Keywords](#)
- [Community Committees](#)
- [Partners](#)
- ~~[Outcomes & Advances](#)~~
- [Products](#)

## Expected Outcomes in Community, Practice, Policy, and Health

What are the expected outcomes for the project?

8  
Delete

## Actual Outcomes in Community, Practice, Policy, and Health

Which has been an outcome of the project?\*

- |  |  |
|--|--|
| <input type="checkbox"/> Change in health status or behavior | <input type="checkbox"/> Enhanced community capacity |
| <input type="checkbox"/> Change in physical environment      | <input type="checkbox"/> Policy change               |
| <input type="checkbox"/> Change in clinical practice         | <input type="checkbox"/> Uptake of intervention      |
| <input type="checkbox"/> Change in public health practice    | <input type="checkbox"/> Not applicable at this time |
| <input type="checkbox"/> Change in sociocultural environment | <input type="checkbox"/> Other (specify below)       |

## Actual Outcome Description

Briefly describe each outcome checked above. (Include specific community or communities affected, numbers reached or served, and time frame of outcome.)

43

8  
Cont'd

**Methodological and Theoretical Advances**

The project furthered the field of prevention research by developing, testing, or disseminating which of the following?\*

- Guidelines
- Measures
- Methods
- Models
- Procedures
- Theories
- Not applicable at this time
- Other (specify below)

**Methodological and Theoretical Advances Description**

Briefly describe each methodological and theoretical advance checked above.



[Privacy Policy](#) | [Accessibility](#)

[PRC Home](#) | [News](#) | [Contact Us](#)

[CDC Home](#) | [Search](#) | [Health Topics A-Z](#)

This page was last reviewed on 10/17/2005  
Quality Assurance Build

[United States Department of Health and Human Services](#)  
[Centers for Disease Control and Prevention](#)  
[National Center for Chronic Disease Prevention and Health Promotion](#)  
[Division of Adult and Community Health](#)

44





National Center for Chronic Disease Prevention and Health Promotion

# PREVENTION RESEARCH CENTERS

PRC Information System

\* Required  
+ Performance Indicator  
Help

## PRC IS

### My PRC

- [Center Information](#)
- [Projects](#)
- [Products](#)
- [Required Reports](#)

### Log-Out

## State University of New York at Albany Prevention Research Center

2005-2006

### Educational Resources Video Project

### Products

| Title | Type | Authors |
|-------|------|---------|
|-------|------|---------|

NO changes

### PROJECT

[General Information](#)

[Project Goals](#)

[Annual Work Plan](#)

[Contacts](#)

[Funding](#)

[Data Sources & Focus Areas](#)

[Population Studied](#)

[Keywords](#)

[Community Committees](#)

[Partners](#)

[Outcomes & Advances](#)

[Products](#)

[Privacy Policy](#) | [Accessibility](#)

[PRC Home](#) | [News](#) | [Contact Us](#)

[CDC Home](#) | [Search](#) | [Health Topics A-Z](#)

This page was last reviewed on 3/24/2006  
Quality Assurance Build

[United States Department of Health and Human Services](#)  
[Centers for Disease Control and Prevention](#)  
National Center for Chronic Disease Prevention and Health Promotion  
[Division of Adult and Community Health](#)

45

Prevention Research Centers  
PRC Information System

Left and right menus – How the PRC IS will look with the revised Projects Section

**PRC IS**

**My PRC**

- Center Information
- Project
- Products
- Trainings
- Required Reports

**Log-out**

*Data Entry fields will go here*

**Project**

- General Information
- Project Goals
- Annual Work Plan
- Contacts
- Funding
- Focus Areas
- Population Studied
- Keywords
- Community Committees
- Partners
- Products
- Intervention Outputs
- Intervention Outcomes

20 Addition

21 Addition

# **Prevention Research Centers PRC Information System**

## **Product Section**

*Product*



National Center for Chronic Disease Prevention and Health Promotion

# PREVENTION RESEARCH CENTERS

PRC Information System

\* Required  
+ Performance Indicator Help

- PRC IS**
- My PRC**
- [Center Information](#)
  - [Projects](#)
  - [Products](#)
  - [Required Reports](#)
- Log-Out**

State University of New York at Albany  
Prevention Research Center

2005-2006

**Test Journal Article**

**Edit General Information**

- PRODUCT**
- General Information
  - Primary Contact
  - Content Focus
  - Languages
  - Authors
  - Reference Information
  - Keywords
  - Sample

**Title\***

Test Journal Article

**Authors**

**Related project\***

Evidence-based Public Health Training

**Type\*\***

Journal article

**Other product type**

**Peer reviewed\***

Yes  No

**Status\***

Select one

**Date completed**  
(published or available)

Select one (yyyy)

**Product description\***

Enter a brief description (75 words or less) of the product.

9 Delete

10 Delete



[Privacy Policy](#) | [Accessibility](#)

[PRC Home](#) | [News](#) | [Contact Us](#)

[CDC Home](#) | [Search](#) | [Health Topics A-Z](#)

This page was last reviewed on 10/17/2005  
Quality Assurance Build

United States Department of Health and Human Services  
Centers for Disease Control and Prevention  
National Center for Chronic Disease Prevention and Health Promotion  
Division of Adult and Community Health

47



[CDC Home](#)

[Search](#)

[Health Topics A-Z](#)

National Center for Chronic Disease Prevention and Health Promotion

# PREVENTION RESEARCH CENTERS

PRC Information System



\* Required  
+ Performance Indicator  
Help

### PRC IS

#### My PRC

- [Center Information](#)
- [Projects](#)
- [Products](#)
- [Required Reports](#)

[Log-Out](#)

## State University of New York at Albany Prevention Research Center

### Test Journal Article

### Add Primary Contact

Select from contacts

Select one

- OR - Enter a new contact below.

First name

Middle name

Last name\*

Degrees

Affiliation\*

Telephone\*

Ext.

Fax

E-mail\*



*No changes*

2005-2006

### PRODUCT

[General Information](#)

[Primary Contact](#)

[Content Focus](#)

[Languages](#)

[Authors](#)

[Reference Information](#)

[Keywords](#)

[Sample](#)

[Privacy Policy](#) | [Accessibility](#)

[PRC Home](#) | [News](#) | [Contact Us](#)

[CDC Home](#) | [Search](#) | [Health Topics A-Z](#)

This page was last reviewed on 10/17/2005  
Quality Assurance Build

United States Department of Health and Human Services  
Centers for Disease Control and Prevention  
National Center for Chronic Disease Prevention and Health Promotion  
Division of Adult and Community Health

*48*



National Center for Chronic Disease Prevention and Health Promotion

# PREVENTION RESEARCH CENTERS

PRC Information System

\* Required  
+ Performance Indicator  
Help

### PRC IS

#### My PRC

- [Center Information](#)
- [Projects](#)
- [Products](#)
- [Required Reports](#)

#### Log-Out

**State University of New York at Albany  
Prevention Research Center**

### Test Journal Article

### Edit Content Focus

#### Focus

Does the content of the product focus on any particular group?\*

Yes  No

If yes, please describe (75 words or less) the group.

Ⓜ  
Delete

### PRODUCT

- [General Information](#)
- [Primary Contact](#)
- [Content Focus](#)
- [Languages](#)
- [Authors](#)
- [Reference Information](#)
- [Keywords](#)
- [Sample](#)

### Intended Audience

For whose use is the product intended?\*

- |  |  |
|--|--|
| <input type="checkbox"/> Academia  | <input type="checkbox"/> Private funding agencies                          |
| <input type="checkbox"/> Community groups or organizations                 | <input type="checkbox"/> Public health practitioners                       |
| <input type="checkbox"/> Federal government agencies                       | <input type="checkbox"/> Public health students                            |
| <input type="checkbox"/> Federal policy and decision makers                | <input type="checkbox"/> Researchers                                       |
| <input type="checkbox"/> General public                                    | <input type="checkbox"/> Schools or teachers                               |
| <input type="checkbox"/> Healthcare or medical professional organizations  | <input type="checkbox"/> Special interest groups                           |
| <input type="checkbox"/> Healthcare providers                              | <input type="checkbox"/> State or local educational agencies               |
| <input type="checkbox"/> Media   | <input type="checkbox"/> State; county or local policy and decision makers |
| <input type="checkbox"/> National policy and decision makers               | <input type="checkbox"/> State; county or local public health departments  |
| <input type="checkbox"/> National; state; or local nonprofit organizations | <input type="checkbox"/> Study participants                                |
| <input type="checkbox"/> PRC Network                                       | <input type="checkbox"/> Other (specify below)                             |

Addition  
Ⓜ



49



National Center for Chronic Disease Prevention and Health Promotion

# PREVENTION RESEARCH CENTERS

PRC Information System



\* Required  
+ Performance Indicator  
Help

### PRC IS

#### My PRC

- [Center Information](#)
- [Projects](#)
- [Products](#)
- [Required Reports](#)

#### Log-Out

No changes

## State University of New York at Albany Prevention Research Center

### Test Journal Article

### Edit Languages

In which language is the product available?\*

- Arabic
- Chinese
- English
- French
- Korean
- Russian
- Spanish
- Vietnamese
- Other (specify below)

2005-2006

### PRODUCT

- [General Information](#)
- [Primary Contact](#)
- [Content Focus](#)
- [Languages](#)
- [Authors](#)
- [Reference Information](#)
- [Keywords](#)
- [Sample](#)



[Privacy Policy](#) | [Accessibility](#)

[PRC Home](#) | [News](#) | [Contact Us](#)

[CDC Home](#) | [Search](#) | [Health Topics A-Z](#)

This page was last reviewed on 10/17/2005  
Quality Assurance Build

United States Department of Health and Human Services  
Centers for Disease Control and Prevention  
National Center for Chronic Disease Prevention and Health Promotion  
Division of Adult and Community Health

50



National Center for Chronic Disease Prevention and Health Promotion

**PREVENTION RESEARCH CENTERS**  
PRC Information System

\* Required  
+ Performance Indicator  
Help

**PRC IS**

**My PRC**

- [Center Information](#)
- [Projects](#)
- [Products](#)
- [Required Reports](#)

**Log-Out**

*No changes*

**State University of New York at Albany  
Prevention Research Center**

**Test Journal Article**

**Add Author**

Select from authors

- OR - Enter a new author below.

First name\*

Middle name

Last name\*

Author order\*     



**2005-2006**

**PRODUCT**

- [General Information](#)
- [Primary Contact](#)
- [Content Focus](#)
- [Languages](#)
- [Authors](#)
- [Reference Information](#)
- [Keywords](#)
- [Sample](#)

[Privacy Policy](#) | [Accessibility](#)

[PRC Home](#) | [News](#) | [Contact Us](#)

[CDC Home](#) | [Search](#) | [Health Topics A-Z](#)

This page was last reviewed on 10/17/2005  
Quality Assurance Build

[United States Department of Health and Human Services](#)  
[Centers for Disease Control and Prevention](#)  
[National Center for Chronic Disease Prevention and Health Promotion](#)  
[Division of Adult and Community Health](#)

*51*





National Center for Chronic Disease Prevention and Health Promotion

# PREVENTION RESEARCH CENTERS

PRC Information System

\* Required  
+ Performance Indicator  
Help

2005-2006

- PRC IS**
- My PRC**
- [Center Information](#)
  - [Projects](#)
  - [Products](#)
  - [Required Reports](#)
- [Log-Out](#)

State University of New York at Albany  
Prevention Research Center

**Test Journal Article**  
**Edit Reference Information**

**Published title \***

- PRODUCT**
- [General Information](#)
  - [Primary Contact](#)
  - [Content Focus](#)
  - [Languages](#)
  - [Authors](#)
  - [Reference Information](#)
  - [Keywords](#)
  - [Sample](#)

*No changes*

**Journal name\*** [Search Journals](#)

**Publishing location**

**Publisher name**

**Publication date\*** Select one (yyyy)  In press

**Page numbers\***

**Volume\***

**Edition\***

**Issue number\***

If published on the World Wide Web(WWW), enter the following information:

**Sponsoring organization**

**Complete URL**

**Date website was last updated** (mm/dd/yyyy)



[Privacy Policy](#) | [Accessibility](#)

[PRC Home](#) | [News](#) | [Contact Us](#)

[CDC Home](#) | [Search](#) | [Health Topics A-Z](#)

This page was last reviewed on 10/20/2005  
Quality Assurance Build

United States Department of Health and Human Services  
Centers for Disease Control and Prevention  
National Center for Chronic Disease Prevention and Health Promotion  
Division of Adult and Community Health

*52*



National Center for Chronic Disease Prevention and Health Promotion

# PREVENTION RESEARCH CENTERS

PRC Information System



\* Required  
+ Performance Indicator  
Help

### PRC IS

#### My PRC

- [Center Information](#)
- [Projects](#)
- [Products](#)
- [Required Reports](#)

#### Log-Out



**State University of New York at Albany  
Prevention Research Center**

### Test Journal Article

### Add Keyword

To search for CDC keywords, enter three or more letters of a word and click 'Search' button.

Search phrase:

2005-2006

### PRODUCT

[General Information](#)

[Primary Contact](#)

[Content Focus](#)

[Languages](#)

[Authors](#)

[Reference Information](#)

[Keywords](#)

[Sample](#)

[Privacy Policy](#) | [Accessibility](#)

[PRC Home](#) | [News](#) | [Contact Us](#)

[CDC Home](#) | [Search](#) | [Health Topics A-Z](#)

This page was last reviewed on 10/17/2005  
Quality Assurance Build

United States Department of Health and Human Services  
Centers for Disease Control and Prevention  
National Center for Chronic Disease Prevention and Health Promotion  
Division of Adult and Community Health

53



National Center for Chronic Disease Prevention and Health Promotion

# PREVENTION RESEARCH CENTERS

PRC Information System

\* Required  
+ Performance Indicator  
Help

2005-2006

### PRC IS

#### My PRC

- [Center Information](#)
- [Projects](#)
- [Products](#)
- [Required Reports](#)

#### Log-Out

*No changes*

## State University of New York at Albany Prevention Research Center

### Test Journal Article

### Add Product Sample

To upload a copy of the product, enter the entire path of the product file or click the 'Browse' button.

Entire path and file name\*

Date sample revised\*  (mm/dd/yyyy)

Can this sample be shared with other PRCs?\*  
 Yes  No

### PRODUCT

[General Information](#)

[Primary Contact](#)

[Content Focus](#)

[Languages](#)

[Authors](#)

[Reference Information](#)

[Keywords](#)

[Sample](#)

[Privacy Policy](#) | [Accessibility](#)

[PRC Home](#) | [News](#) | [Contact Us](#)

[CDC Home](#) | [Search](#) | [Health Topics A-Z](#)

This page was last reviewed on 10/17/2005  
Quality Assurance Build

United States Department of Health and Human Services  
Centers for Disease Control and Prevention  
National Center for Chronic Disease Prevention and Health Promotion  
Division of Adult and Community Health

54

Prevention Research Centers  
PRC Information System

Left and right menus – How the PRC IS will look with the revised Products Section

---

**PRC IS**

**My PRC**

- Center Information
- Project
- Products
- Trainings
- Required Reports

**Log-out**

*Data Entry fields will go here*

**Product**

General Information

Primary Contact

Content Focus

Languages

Authors

Reference Information

Keywords

**Distribution**

Sample

23 Addition

# **Prevention Research Centers PRC Information System**

**Training  
Section**

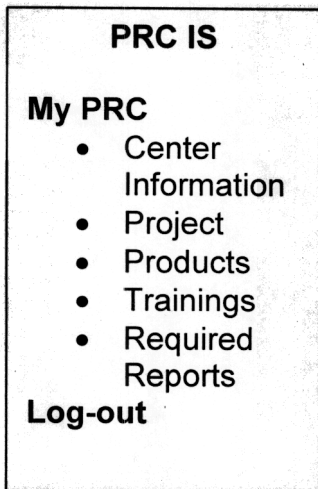
***(NEW)***

*Training*

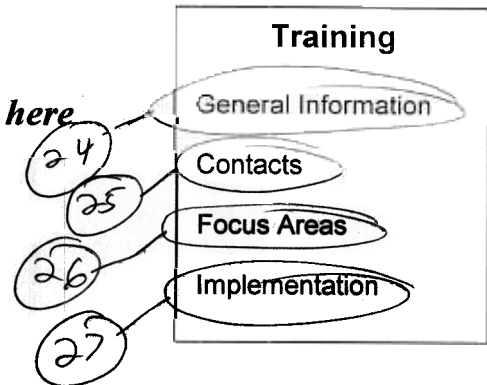
Prevention Research Centers  
PRC Information System

Left and right menus – How the PRC IS will look with the  
new Training Section

---



*Data Entry fields will go here*







National Center for Chronic Disease Prevention and Health Promotion

# PREVENTION RESEARCH CENTERS

PRC Information System



\* Required  
+ Performance Indicator  
Help

- PRC IS**
- My PRC
  - Center Information
  - Projects
  - Products
  - Required Reports**
  - Log-Out

## State University of New York at Albany Prevention Research Center

2005-2006

**REQUIRED REPORTS**

Interim Report

### Interim Report

**Due: May 12**

| Step  | Status                 |
|---|------------------------|
| 1. <u>Review 2005-2006 Center Goals, Objectives &amp; Activities</u>  | Complete               |
| 2. <u>Review 2005-2006 Project Goals, Objectives &amp; Activities</u> | Complete               |
| 3. <u>Transfer Information to 2006-2007</u>                           | Incomplete             |
| 4. <u>Review 2006-2007 Center Goals, Objectives &amp; Activities</u>  | Incomplete             |
| 5. <u>Review 2006-2007 Project Goals, Objectives &amp; Activities</u> | Incomplete             |
| 6. <u>View, Finalize and Print Report</u>                             | <b>DRAFT: Past Due</b> |

*Report only  
No Data Entry*

[Privacy Policy](#) | [Accessibility](#)

[PRC Home](#) | [News](#) | [Contact Us](#)

[CDC Home](#) | [Search](#) | [Health Topics A-Z](#)

This page was last reviewed on 3/29/2006  
Quality Assurance Build

United States Department of Health and Human Services  
Centers for Disease Control and Prevention  
National Center for Chronic Disease Prevention and Health Promotion  
Division of Adult and Community Health

57