

Attachment 7

**Record Layout and Data Dictionary
(extracted from NAACCR Data Standards and Data Dictionary, version 11)**

North American Association of Central Cancer Registries

Standards for Cancer Registries Volume II

Data Standards and Data Dictionary

**Tenth Edition
Record Layout Version 11**

**Edited By
Lori A. Havener
Dianne Hultstrom**

November 2004

Sponsoring Organizations

American Cancer Society
American College of Surgeons
American Joint Committee on Cancer
Canadian Association of Provincial Cancer Agencies
Centers for Disease Control and Prevention
Health Canada
National Cancer Institute
National Cancer Registrars Association
Statistics Canada

Edited By

Lori A. Havener, CTR
Program Manager of Standards, NAACCR, Inc.

Dianne Hultstrom, BS, RHIT, CTR
Chair, Volume II Workgroup of the Uniform Data Standards Committee

Comments and suggestions on this and other NAACCR standards documents are welcome. Please send your comments to the Editor or any member of the NAACCR Board of Directors.

The other volumes in the series, Standards for Cancer Registries, are:**❖ Volume I, *Data Exchange Standards and Record Description***

Intended for programmers and selected users of central cancer registry data, this Volume provides the record layouts and specifications for a number of standard NAACCR record formats, including: the standard record layouts for data exchange among central cancer registries; an update/correction record layout; and an analysis record layout that provides standard recodes for grouping selected variables such as race and primary site, as well as algorithms for converting data from one version of the International Classification of Diseases for Oncology to another. The Volume is released annually as an electronic document and posted on the NAACCR Website.

❖ Volume III, *Standards for Completeness, Quality, Analysis, and Management of Data*

Intended for central registries, this provides detailed standards for many aspects of the operation of a population-based cancer registry.

Copies of all standards documents can be viewed or downloaded from NAACCR's website at: <http://www.naacccr.org>. For additional paper copies, write to the NAACCR Executive Office at: 2121 W. White Oaks Drive, Suite C, Springfield, IL, 62704-6495.

Suggested citation

Havener L, Hultstrom D, editors. Standards for Cancer Registries Volume II: Data Standards and Data Dictionary, Tenth Edition, Version 11. Springfield, IL: North American Association of Central Cancer Registries, November 2004.

Acknowledgment

We are very grateful to Tricia Kulmacz for providing technical support and to the NAACCR Volume II workgroup of the Uniform Data Standards Committee for their dedication and many hours to prepare this document.

This project has been funded in part with Federal funds from the National Cancer Institute, National Institutes of Health, Department of Health & Human Services under Contract No. HHSN26120044401C and ADB No. N02-PC-44401. Production and distribution of this Volume was provided in part by Cooperative Agreement Number U75/CCU523346 from the Centers of Disease Control and Prevention. Its contents are solely the responsibility of the authors and do not necessarily represent the official views of CDC. The NAACCR Board of Directors adopted these standards in November 2004.

TABLE OF CONTENTS

NAACCR Board Of Directors 2004-2005 vii

Uniform Data Standards Committee 2004-2005 ix

Members Of The Volume II Work Group 2004-2005 xi

Standard Setting Organizations xiii

Preface To The Tenth Edition xv

Chapter I: Problem Statement, Goals, And Scope Of This Document 1

Chapter II: Historical Background And Status Of U.S. Standards 9

Chapter III: Standards For Tumor Inclusion And Reportability 19

Chapter IV: Recommended Data Edits And Software Coordination Of Standards 25

Chapter V: Unresolved Issues 29

Chapter VI: References 37

Chapter VII: Record Layout Table (Column # Order) 41

Chapter VIII: Required Status Table (Item # Order) 55

Chapter IX: Data Descriptor Table (Item # Order) 65

Chapter X: Data Dictionary 81

Appendix A: Fips Codes For Counties And Equivalent Entities 323

Appendix B: Edits Tables For Selected Data Items 339

Appendix C: Abbreviations And Acronyms Used 353

Appendix D: Alternate Names 355

Appendix E: Grouped Data Items 365

Appendix F: Tables And Data Dictionary Revisions 367

Appendix G: Recommended Abbreviations For Abstractors 377

Index 403

**NAACCR BOARD OF DIRECTORS
2004-2005**

President:

Dennis Deapen, DrPH 2003-05
Cancer Surveillance Program of Los Angeles
1540 Alcazar Street, CHP 204
Los Angeles, CA 90033
Telephone: (323) 442-1574
Fax: (323) 442-2301
E-mail: ddeapen@hsc.usc.edu

President Elect:

Betsy Kohler, MPH, CTR 2004-05
New Jersey State Cancer Registry
Cancer Epidemiology Services
New Jersey Department of Health and Senior Services
P.O. Box 369
Trenton, NJ 08625-0369
Telephone: (609) 588-3500
Fax: (609) 588-3638
E-mail: betsy.kohler@doh.state.nj.us

Treasurer:

Lilia C. O'Connor, MBA, RHIT, CTR 2003-05
California Cancer Registry
California Department of Health Services
1700 Tribute Road, Suite 100
Sacramento, CA 95815-4402
Telephone: (916) 779-0355
Fax: (916) 779-0264
E-mail: loconnor@ccr.ca.gov

Executive Director ex officio:

Holly L. Howe, PhD
NAACCR, Inc.
2121 W. White Oaks Drive, Suite C
Springfield, IL 62704-6495
Telephone: (217) 698-0800, ext. 2
Fax: (217) 698-0188
E-mail: hhowe@naaccr.org

Representative, Sponsoring Member Organization:

Connie Bura 2000-06
American College of Surgeons
Commission on Cancer
633 N. Saint Clair Street
Chicago, IL 60611-3211
Telephone: (312) 202-5290
Fax: (312) 202-5009
E-mail: cbura@facs.org

Members at Large:

Jane E. Braun, MS, CTR 2004-06
Minnesota Cancer Surveillance System
Minnesota Department of Health
717 Delaware SE
Minneapolis, MN 55440-9441
Telephone: (612) 676-5231
Fax: (612) 676-5099
E-mail: jane.braun@health.state.mn.us

Mignon Dryden, CTR 2001-05
Cancer Registry of Northern California
1560 Humboldt Road, Suite 4
Chico, CA 95928
Telephone: (530) 345-2483
Fax: (530) 345-3214
E-mail: mdryden@healthcollaborative.com

Susan T. Gershman, MS, MPH, PhD, CTR 2002-06
Massachusetts Cancer Registry
Department of Public Health
250 Washington Street, Sixth Floor
Boston, MA 02108-4619
Telephone: (617) 624-5646
Fax: (617) 624-5695
E-mail: susan.gershman@state.ma.us

Michael D. Green, CTR 2004-05
Hawaii Tumor Registry
1236 Lauhala St.
Honolulu, HI 96813
Telephone: (808) 586-9750
Fax: (808) 587-0024
E-mail: Michael@crch.hawaii.edu

Maureen MacIntyre, BSN, MHSA 2003-05
Nova Scotia Cancer Registry
5820 University Avenue
Halifax, Nova Scotia B3H 1V7
Canada
Telephone: (902) 473-6084
Fax: (902) 428-4277
E-mail: maureen.macintyre@ccns.nshealth.ca

Maria J. Schymura, PhD
New York State Cancer Registry
Corning Tower, Room 536
Empire State Plaza
Albany, NY 12237-0679
Telephone: (518) 474-2255
Fax: (518) 473-6789
E-mail: mjs08@health.state.ny.us

2002-06

**UNIFORM DATA STANDARDS COMMITTEE
2004-2005**

Andrew Stewart, MA*
Chair

American College of Surgeons
Commission on Cancer
633 N. Saint Clair Street
Chicago, IL 60611-3211
Telephone: (312) 202-5285
Fax: (312) 202-5009
E-mail: astewart@facs.org

Toshi Abe, MSW, CTR

New Jersey State Cancer Registry
P.O. Box 369
3635 Quakerbridge Road
Trenton, NJ 08625-0369
Telephone: (609) 588-3500
Fax: (609) 588-3638
E-mail: toshi.abe@doh.state.nj.us

Patricia Andrews, MPH, CTR*

Louisiana Tumor Registry
1600 Canal Street, Suite 900A
New Orleans, LA 70112
Telephone: (504) 568-4795
Fax: (504) 568-2493
E-mail: pandre@lsuhsc.edu

Sally Bushhouse, DVM, PhD*

Minnesota Cancer Surveillance
System
Minnesota Department of Health
P.O. Box 9441
717 Delaware, S.E.
Minneapolis, MN 55440
Telephone: (612) 676-5216
Fax: (612) 676-5099
E-mail:
sally.bushhouse@state.mn.us

Susan Capron *

2443 W. Moffat
Chicago, IL 60647
Telephone: (773) 278-6207
Fax: (773) 278-0116
E-mail: scapron@mindspring.com

Dianne Cleveland, RHIA, CTR

Onco, Inc.
317 Fairhaven Court
Hurst, TX 76054
Telephone: (817) 497-3209
E-mail: dcleland@oncology.com

Michel Cormier

Statistics Canada
120 Parkdale Avenue
Tunney's Pasture
Main Building, Room 2200
Ottawa, Ontario K1A 0T6
Canada
Telephone: (613) 951-1775
Fax: (613) 951-0792
E-mail: michel.cormier@statcan.ca

April Fritz, RHIT, CTR

Cancer Statistics Branch
Surveillance Epidemiology and End
Results Program
Division of Cancer Control and
Population Sciences
National Cancer Institute
National Institutes of Health
6116 Executive Boulevard, Suite 504
Bethesda, MD 20892-8316
Telephone: (301) 402-1625
Fax: (301) 496-9949
E-mail: april.fritz@nih.gov

Barry Gordon, PhD*

C/NET Solutions
1936 University Avenue, Suite 112
Berkeley, CA 94704
Telephone: (510) 540-0778
Fax: (510) 549-8929
E-mail: barryg@askcnet.org

Maria Halama, MD, CTR*

New Jersey State Cancer Registry
P.O. Box 369
3635 Quakerbridge Road
Trenton, NJ 08625-0369
Telephone: (609) 588-3500
Fax: (609) 588-3638
E-mail: maria.halama@doh.state.nj.us

Lori Havener, CTR

NAACCR, Inc.
2121 W. White Oaks Drive, Suite C
Springfield, IL 62704-6495
Telephone: (217) 698-0800, ext. 5
Fax: (217) 698-0188
E-mail: lhavener@naaccr.org

Megs Casuso Herna, CTR*

Florida Cancer Data System
University of Miami School of
Medicine
P.O. Box 016960 (D4-11)
Miami, FL 33101
Telephone: (305) 243-2625
Fax: (305) 243-4871
E-mail: MHerna@med.miami.edu

Dianne Hultstrom, RHIT, CTR*

IMPAC Medical Systems, Inc.
16 Robert Road
Acton, MA 01720
Telephone: (978) 897-5330
Fax: (978) 461-2872
E-mail: dhultstrom@impac.com

Annette A. Hurlbut, RHIT, CTR

IMPAC Medical Systems, Inc.
46 Leo-Mar Drive
Fulton, NY 13069
Telephone: (315) 593-7130
Fax: (315) 598-4737
E-mail: ahurlbut@impac.com

Carol Johnson, BS, CTR

Cancer Statistics Branch
Surveillance Epidemiology and End
Results Program
Division of Cancer Control and
Population Sciences
National Cancer Institute
National Institutes of Health
6116 Executive Boulevard, Suite
504
Bethesda, MD 20892-8316
Telephone: (301) 402-6226
Fax: (301) 496-9949
E-mail: johnsoca@mail.nih.gov

*Voting Member

Amy Kahn, MS, CTR*
New York State Cancer Registry
Corning Tower, Room 536
Empire State Plaza
Albany, NY 12237-0679
Telephone: (518) 474-2255
Fax: (518) 473-6789
E-mail: ark02@health.state.ny.us

Karen Ledford
CDC
NCCDPHP/DCPC/CSB
4770 Buford Highway, N.E.
MS K-53
Atlanta, GA 30341-3724
Telephone: (770) 488-4869
Fax: (770) 488-4759
E-mail: kledford@cdc.gov

Fran Michaud, BS, CTR*
CDC
NCCDPHP/DCPC/CSB
4770 Buford Highway, N.E.
MS K-53
Atlanta, GA 30341-3724
Telephone: (770) 488-4378
Fax: (770) 488-4759
E-mail: fhm2@cdc.gov

David O'Brien, PhD*
Alaska Cancer Registry
Section of Epidemiology, Department
of Health
P.O. Box 240249
3601 C Street, Suite 540
Anchorage, AK 99524-0249
Telephone: (907) 269-8047
Fax: (907) 562-7802
E-mail:
david_obrien@health.state.ak.us

Lynn Ries, MS*
Cancer Statistics Branch
Surveillance Epidemiology and End
Results Program
Division of Cancer Control and
Population Sciences
National Cancer Institute
National Institutes of Health
6130 Executive Boulevard,
Room 343J
Bethesda, MD 20892-8316
Telephone: (301) 402-5259
Fax: (301) 496-9949
E-mail: lr44c@nih.gov

Winnie Roshala, BA, CTR*
National Cancer Registrars
Association
California Cancer Registry
1700 Tribute Road, #100
Sacramento, CA 95815-4402
Telephone: (916) 779-0313
Fax: (916) 779-0264
E-mail: wroshala@ccr.ca.gov

Brian Schexnayder, CTR
ORC Macro
11785 Beltsville Dr.
Suite 846
Calverton, MD 20705
Telephone: (301) 572-0400
Fax: (301) 572-0390
E-mail:
Brian.D.Schexnayder@orcmacro.com

Nancy Schlag, BS, CTR*
California Cancer Registry
1700 Tribute Road, Suite 100
Sacramento, CA 95815-4402
Telephone: (916) 779-0310
Fax: (916) 779-0264
E-mail: nschlag@ccr.ca.gov

Maria Schymura, PhD
New York State Cancer Registry
Corning Tower, Room 536
Empire State Plaza
Albany, NY 12237-0679
Telephone: (518) 474-2255
Fax: (518) 474-2086
E-mail: mjs08@health.state.ny.us

Jennifer Seiffert, MLIS, CTR*
Northrop Grumman
2796 W 250 S
Warsaw, IN 46580
Telephone: (574) 267-7332
Fax: (574) 267-7332
E-mail: jenesei@insightbb.com

Jan Snodgrass, CTR*
Illinois State Cancer Registry
605 W. Jefferson
Springfield, IL 62761
Telephone: (217) 785-7132
Fax: (217) 524-1770
E-mail: jsnodgra@idph.state.il.us

*Voting Member

MEMBERS OF THE VOLUME II WORK GROUP 2004-2005

**Dianne Hultstrom, RHIT, CTR
Chair**

IMPAC Medical Systems, Inc.
16 Robert Road
Acton, MA 01720
Telephone: (978) 897-5330
Fax: (978) 461-2872
E-mail: dhultstrom@impac.com

Lori A. Havener, CTR

Program Manager of Standards
NAACCR, Inc.
2121 W. White Oaks Drive, Suite C
Springfield, IL 62704-6495
Telephone: (217) 698-0800, ext. 5
Fax: (217) 698-0188
E-mail: lhavener@naacccr.org

Jane Abe, CTR

John Muir/Mt. Diablo Health
System
940 Stannage Avenue
Albany, CA 94706
Telephone: (510) 526-2379
Fax: (925) 674-2587
E-mail: jane.aber@pacbell.net

Toshi Abe, MSW, CTR

New Jersey State Cancer Registry
P.O. Box 369
3635 Quaker Bridge Road
Trenton, NJ 08625-0369
Telephone: (609) 588-3500
Fax: (609) 588-3638
E-mail: toshi.aber@doh.state.nj.us

Patricia Andrews, MPH, CTR

Louisiana Tumor Registry
1600 Canal Street, Suite 900A
New Orleans, LA 70112-1393
Telephone: (504) 568-4795
Fax: (504) 568-2493
E-mail: pandre@lsuhsc.edu

Sally Bushhouse, DVM, PhD

Minnesota Cancer Surveillance
System
Minnesota Department of Health
P.O. Box 9441
717 Delaware, S.E.
Minneapolis, MN 55440
Telephone: (612) 676-5216
Fax: (612) 676-5099
E-mail:
sally.bushhouse@state.mn.us

Susan Capron

2443 W. Moffat Street
Chicago, IL 60647
Telephone: (773) 278-6207
Fax: (773) 278-0116
E-mail: scapron@mindspring.com

Ingrid Friesen

Statistics Canada
402 Budz Crescent
Saskatoon, Saskatchewan
S7N, 4M5
Canada
Telephone: (306) 652-3876
Fax: (306) 652-3886
E-mail: ifriesen@sasktel.net

April Fritz, RHIT, CTR

Cancer Statistics Branch
Surveillance Epidemiology and End
Results Program
Division of Cancer Control and
Population Sciences
National Cancer Institute
National Institutes of Health
6116 Executive Boulevard,
Suite 504
Bethesda, MD 20892-8316
Telephone: (301) 402-1625
Fax: (301) 496-9949
E-mail: april.fritz@nih.gov

Carol Hahn-Johnson, BS, CTR

Cancer Statistics Branch
Surveillance Research Program
Division of Cancer Control and
Population Sciences
National Cancer Institute
National Institutes of Health
6116 Executive Boulevard,
Suite 504
MSC 8316
Bethesda, MD 20892-8316
Rockville, MD 20852 (courier or
overnight delivery)
Telephone: (301) 402-6226
Fax: (301) 496-9949
E-mail: johnsoca@mail.nih.gov

Megsys Casuso Herna, CTR

Florida Cancer Data System
University of Miami School of
Medicine
P.O. Box 016960 (D4-11)
Miami, FL 33101
Telephone: (305) 243-2625
Fax: (305) 243-4871
E-mail: M Herna@med.miami.edu

Coreen Hildebrand, CTR, HIT

Manitoba Cancer Registry
675 McDermot Street
Winnipeg, Manitoba R3E 0V9
Canada
Telephone: (204) 787-2103
Fax: (204) 786-0628
E-mail:
coreen.hildebrand@cancercare.
mb.ca

Ryan Intlekofer, RN, CTR

CDC
NCCDPHP/DCPC/CSB
4770 Buford Highway, N.E.
MS K-53
Atlanta, GA 30341-3724
Telephone: (770) 488-1075
Fax: (770) 488-4759
E-mail: rbil@cdc.gov

Amy Kahn, MS, CTR

New York State Cancer Registry
Corning Tower, Room 536
Empire State Plaza
Albany, NY 12237-0679
Telephone: (518) 474-2255
Fax: (518) 473-6789
E-mail: ark02@health.state.ny.us

David O'Brien, PhD

Alaska Cancer Registry
EPI-Cancer
Division of Public Health
Department of Health and Social
Services
P.O. Box 240249
3601 C Street, Suite 540
Anchorage, AK 99524-0249
Telephone: (907) 269-8047
Fax: (907) 561-1896
E-mail:
david_obrien@health.state.ak.us

Judy Paradies, CTR

Nebraska Cancer Registry
Health and Human Services
8601 West Dodge Road, Suite 114A
Omaha, NE 68114
Telephone: (402) 354-3393
Fax: (402) 354-3388
E-mail: judy.paradies@nmhs.org

Steven Peace, BS, CTR

Cancer Statistics Branch
Surveillance Research Program
Division of Cancer Control and
Population Sciences
National Cancer Institute
National Institutes of Health
6116 Executive Boulevard,
Suite 504
MSC 8316
Bethesda, MD 20892-8316
Rockville, MD 20852 (courier or
overnight delivery)
Telephone: (301) 594-8494
Fax: (301) 496-9949
E-mail: peaces@mail.nih.gov

Jerri Linn Phillips, MA, CTR

American College of Surgeons
National Cancer Data Base
633 N. Saint Clair Street
Chicago, IL 60611-3211
Telephone: (312) 202-5514
Fax: (312) 202-5009
E-mail: jphillips@facs.org

Lynn Ries, MS

Cancer Statistics Branch
Surveillance Epidemiology and End
Results Program
Division of Cancer Control and
Population Sciences
National Cancer Institute
National Institutes of Health
6130 Executive Boulevard,
Room 343J
Bethesda, MD 20892-8316
Telephone: (301) 402-5259
Fax: (301) 496-9949
E-mail: lr44c@nih.gov

Castine Verrill, MS

Epidemiologist
Maine Cancer Registry
Key Bank Plaza, Fourth Floor
11 State House Station
Augusta, ME 04333
Telephone: (207) 287-5272
Fax: (207) 287-4631
E-mail: castine.verrill@state.me.us

Sue Vest, CTR

Missouri Cancer Registry
Missouri Department of Health
P.O. Box 570
920 Wildwood
Jefferson City, MO 65109
Telephone: (573) 884-9655
Fax: (573) 882-6158
E-mail: vests@health.missouri.edu

STANDARD SETTING ORGANIZATIONS

American College of Surgeons (ACoS)

633 N. Saint Clair Street
Chicago, IL 60611-3211
Telephone: (312) 202-5000
Fax: (312) 202-5001
E-mail: postmaster@facs.org
Website: www.facs.org

American Joint Committee on Cancer (AJCC)

633 N. Saint Clair Street
Chicago, IL 60611-3211
Telephone: (312) 202-5290
E-mail: sburkhardt@facs.org
Website: cancerstaging.org

Centers for Disease Control and Prevention (CDC)

National Program of Cancer Registries (NPCR)
Division of Cancer Prevention and Control
National Center for Chronic Disease
Prevention and Health Promotion
4770 Buford Hwy, NE
MS K53
Atlanta, GA 30341-3717
Telephone: (770) 488-4783
Fax: (770) 488-4759
Website: www.cdc.gov/cancer/npcr

Canadian Council of Cancer Registries

c/o Statistics Canada
Canadian Cancer Registry
Health Statistics Section
Health Statistics Division
Main Building, Room 2200, Section F
120 Parkdale Avenue
Ottawa, ON K1A 0T6
Telephone: (613) 951-1630
Fax: (613) 951-0792
Website: www.statcan.ca

Commission on Cancer (CoC)

633 N. Saint Clair Street
Chicago, IL 60611-3211
Telephone: (312) 202-5085
E-mail: coc@facs.org
Website: www.facs.org

National Cancer Institute SEER Program

Cancer Surveillance Research Program
Division of Cancer Control and Population Sciences
6116 Executive Blvd. - MSC 8316
Suite 504
Bethesda, MD 20892-8316
Telephone: (301) 496-8510
Fax: (301) 496-9949
E-mail: cancer.gov_staff@mail.nih.gov
Website: www.seer.cancer.gov

National Cancer Registrars Association (NCRA)

1340 Braddock Place #203
Alexandria, VA 22314
Telephone: (703) 299-6640
Fax: (703) 299-6620
E-mail: info@ncra-usa.org
Website: www.ncra-usa.org

North American Association of

Central Cancer Registries, Inc. (NAACCR)

2121 West White Oaks Drive
Springfield, IL 62704-6495
Telephone: (217) 698-0800
Fax: (217) 698-0188
E-mail: info@naaccr.org
Website: www.naaccr.org

PREFACE TO THE TENTH EDITION

NAACCR continues its strong commitment to all its members in North America to maintain standardization of cancer registry data, as evidenced in the publication of this Tenth Edition of NAACCR Standards for Cancer Registry Volume II: *Data Standards and Data Dictionary*. Standardization of cancer registry data is a core component of cancer registration and surveillance and provides the foundation for developing comparable data among registries that can then be combined for the compilation of national or regional rates. Standardization also allows data from different registries to be used for comparison of variations in cancer rates among different populations and across geographic boundaries.

I believe that these revisions will assist our members in achieving the NAACCR mission, namely, providing current, high-quality, and useful data for the cancer surveillance community and cancer control researchers with the ultimate goal of reducing cancer morbidity and mortality in North America. **Please note that black vertical lines in the outside margins highlight revisions from the previous version.**

This Volume includes 17 new data items representing a variety of current issues such as comorbidities, multiple primary rules, Indian Health Service linkage, geographic information systems, casefinding, treatment, and follow-up. Several data items have been retired. These changes were proposed by NAACCR committees and workgroups and the sponsoring members including the National Cancer Institute's Surveillance, Epidemiology and End Results Program, the Centers for Disease Control and Prevention's National Program for Cancer Registries, and the American College of Surgeons' Commission on Cancer. On behalf of the NAACCR Board of Directors, I express our gratitude to all of the sponsoring members and committees for their support of the work that this Volume represents.

The NAACCR Board of Directors would like to extend a special thanks to Lori Havener and Dianne Hultstrom, editors of this volume for their leadership, dedication and hard work in bringing this document to completion. The Board of Directors also would like to recognize the leadership of Andrew Stewart, Chair of the Uniform Data Standards Committee.

Dennis Deapen, DrPH
President

CHAPTER III

STANDARDS FOR TUMOR INCLUSION AND REPORTABILITY

Due to continued efforts by standard-setting organizations, facility-based registries and population-based central registries now follow nearly identical standards for determining tumors that are reportable and are to be included in the registry; however, some differences remain. COC stipulates the tumors that must be included in approved facility registries, while most population-based registries, at a minimum, follow the standards set by SEER or NPCR. The *Cancer Program Standards*,²⁸ the COC FORDS manual,² SEER Program Code manuals,^{3,6} and the NPCR Program Announcement⁴⁰ should be consulted for more details.

Standards for tumor reportability are defined by the following criteria:

Reference Date

The reference date is the effective date cancer registration starts in a specified at-risk population or in a specific facility. It is not the date the registry is organized or the date work begins. Tumors diagnosed on or after the reference date must be included. The reference date typically begins on January 1 of a calendar year, but sometimes it is another date.

Residency

For a population-based registry, it is essential to include all tumors occurring in the at-risk population, and rules must be in place for determining the members of that population. The goal is to use the same rules for the patient's demographic data at the time of diagnosis as those used by the Census Bureau in enumerating the population. For example, a population-based registry must have rules for determining residency of part-year residents, institutionalized persons, homeless persons, military personnel, and students. See the *SEER Program Code Manual*³ for specific instructions.

NAACCR recommends that population-based registries include in their database tumor reports of non-residents from facilities in their catchment areas to:

- ❖ Share tumor information that otherwise may go unreported with the resident's population-based registry.
- ❖ Facilitate death clearance and other record linkages.
- ❖ Allow preparation of complete and accurate reports to individual facilities.

Hospital-based registries are less concerned with residency of the patient than the reason for admission, and hospital registries might not collect data for certain categories of patients that the central registry must include, such as patients admitted to a hospice unit or transient patients who receive interim care to avoid interrupting a course of therapy. Also, COC does not require complete abstracting of tumors that are "nonanalytic" for the facility. Therefore, for the central registry, clear rules that are well documented, widely distributed, and accepted are essential to prevent missed case reports (source records).

Reportable List

COC, NPCR, and SEER have achieved greater consensus on reportable tumors in the past few years (see Table 2). For all tumors diagnosed from January 1, 1992, through December 31, 2000, all three standard setters required the inclusion of all neoplasms in the *International Classification of Diseases for Oncology*, Second

Edition¹⁵ (ICD-O-2) with a behavior code of 2 or 3 (*in situ* or malignant), with the exception of squamous cell and basal cell carcinoma of the skin and carcinoma *in situ* of the cervix uteri since 1996. (See the CARCINOMA *IN SITU* OF THE CERVIX, CIN, AND THE BETHESDA SYSTEM Section later in this Chapter).

For all tumors diagnosed on or after January 1, 2001, all three organizations require the inclusion of all neoplasms in the International Classification of Diseases for Oncology, Third Edition¹⁴ (ICD-O-3) with a behavior code of 2 or 3 (*in situ* or malignant), with the exception of squamous cell and basal cell carcinoma of the skin, prostatic intraepithelial neoplasia (PIN) III, carcinoma *in situ* (CIS) of the cervix, and cervical intraepithelial neoplasia (CIN) III. Code M9421 (juvenile astrocytoma, pilocytic astrocytoma, or piloid astrocytoma), with a behavior code of 1 (borderline) in ICD-O-3, is reportable as M9421/3. Prior to 2003, COC considered basal and squamous skin cancers that were AJCC stage group II or higher at diagnosis as reportable.

In addition, all three organizations require the inclusion of all non-malignant primary intracranial and central nervous system (CNS) tumors diagnosed on or after January 1, 2004. Specifically, non-malignant primary intracranial and CNS tumors of any morphology in ICD-O-3¹⁴ having a behavior code of 0 or 1 (benign/borderline) occurring in the following sites: brain, meninges, spinal cord, cranial nerves and other parts of the CNS, pituitary gland, pineal gland, and craniopharyngeal duct are reportable(see Table 3).

In Situ/Invasive

It is important to distinguish between the morphologic condition of *in situ* as it is represented in ICD-O-2 or ICD-O-3 behavior codes and Tis as it is defined for the purpose of prognostic staging in the *AJCC Cancer Staging Manual*. Some morphologic and disease descriptive terms that are invasive in ICD-O-2/ICD-O-3 or localized in the SEER *Summary Staging Guide/SEER Summary Staging Manual 2000* are Tis in the *AJCC Cancer Staging Manual*. Some examples are:

- ❖ Paget's disease of the nipple (8540/3) (an "invasive" code in ICD-O-2 and ICD-O-3) *with no underlying tumor* is classified as Tis in AJCC Sixth Edition.
- ❖ For colon/rectum, "invasion of the lamina propria" (intramucosal) with no extension through the muscularis mucosae into the submucosa is classified as Tis according to AJCC Sixth Edition but localized in SEER Summary Stage 2000.

Whether a tumor diagnosis is *in situ* or invasive is important because it affects how the tumor will be reported in published statistics. Some tumors staged by central cancer registries using SEER Summary Stage or SEER EOD codes as "localized" can be classified as Tis or Stage 0 when coded according to AJCC or when EOD codes are converted to AJCC. Some tumors classified as invasive in the behavior code can be classified as Tis or Stage 0 when coded according to AJCC Sixth Edition or when EOD codes are converted to AJCC Sixth Edition. These differences should be considered when data are being compared. For more information on differences in staging classifications and current activities toward improving the situation, see Chapter V.

Multiple Primary Rules

The method used for counting tumors affects the comparability of cancer rates among registries. It is important that identical rules have been used for counting multiple tumors in the patient—whether in the same organ, on opposite sides of paired organs, in different sites or subsites—and whether they were diagnosed at the same or different times. SEER rules are the *de facto* standard in the United States for both central and hospital-based registries. See the *SEER Program Code Manual*³ for details.

SEER rules are not identical to the international standard recommended by the International Agency for Research on Cancer (IARC) and the International Association of Cancer Registries (IACR).³⁷ The IARC rules have the effect of defining fewer cases than do the SEER rules.

The following addition to SEER multiple primary rules was reviewed by UDSC and adopted on April 26, 1994, effective with tumors diagnosed in 1995 and later.

If there is an *in situ* followed by an invasive cancer at the same site more than 2 months apart, report as two primaries even if stated to be a recurrence. The invasive primary should be reported with the date of the *invasive* diagnosis (*SEER Program Code Manual*).

This important rule affects how the tumor will be counted in published statistics. With the exception of bladder, *in situ* tumors are not usually included in published incidence rates. Without the reporting of these invasive cancers, for example, rates of invasive breast cancer would be underreported. COC, with an emphasis on clinical data, has not adopted this exception to the general rule.

SEER has convened a task force to review and revise the histology coding rules and the multiple primary coding rules in a manner that will promote consistent, standardized coding of histologies and multiple primaries on the data collection level. The revised histology coding rules and multiple primary coding rules will be available for a January 2006 implementation of these standards.

CARCINOMA *IN SITU* OF THE CERVIX, CIN, AND THE BETHESDA SYSTEM

The term “pre-invasive cervical neoplasia” refers to carcinoma *in situ* of the cervix and conditions viewed as equivalent to it or on a continuum with it. Diagnostic terminology for pre-invasive cervical neoplasia has changed significantly over time, from the four-tiered system of dysplasia and carcinoma *in situ*, to the three-tiered system of CIN, to the two-tiered Bethesda System, with high- and low-grade squamous intraepithelial lesions (SIL). In the past, cancer registries generally considered carcinoma *in situ* of the cervix reportable, but they differed in which of these other terms they considered synonymous with carcinoma *in situ* and hence reportable. Consequently, data were not comparable over time or across registries.

NAACCR convened a multidisciplinary working group in April 1993 to review the problem and make recommendations for its membership. The recommendation was that “population-based registries discontinue routine collection of data on pre-invasive cervical neoplasia unless there is strong local need and interest and sufficient resources are available to collect all [high-grade squamous intraepithelial lesions] and its equivalent terms.”³³ NAACCR and NPCR adopted this recommendation at that time. SEER and COC adopted it effective for cases diagnosed January 1, 1996 forward.

Ambiguous Terminology

In most circumstances, the diagnosis of cancer, as recorded in the patient’s medical record, clearly is synonymous with reportable cancer. However, in those situations where the physician is not certain of the diagnosis, the associated terminology in the medical record reflects that uncertainty and is ambiguous. COC and SEER are in agreement in regard to the list of terms considered as diagnostic of cancer and a list of terms not considered as cancer. These terms are shown in Table 2.

Table 2. NAACCR Layout Version 11: Comparison of Reportable Cancers: COC, SEER, and NPCR.

	COC	SEER	NPCR
Reportable Diagnoses On or after 1/1/2005	<ol style="list-style-type: none"> Behavior code of 2 or 3 in ICD-O-3. Non-malignant (behavior codes 0 and 1) primary intracranial and central nervous system tumors, including juvenile astrocytoma (M9421/3)* for primary sites as defined in Table 3. 	<ol style="list-style-type: none"> Behavior code of 2 or 3 in ICD-O-3. Non-malignant (behavior codes 0 and 1) primary intracranial and central nervous system tumors, including juvenile astrocytoma (M9421/3)* for primary sites as defined in Table 3. 	<ol style="list-style-type: none"> Behavior code of 2 or 3 in ICD-O-3 (includes VIN III, VAIN III, AIN III). Non-malignant (behavior codes 0 and 1) primary intracranial and central nervous system tumors, including juvenile astrocytoma (M9421/3)* for primary sites as defined in Table 3.
Exceptions (not reportable)	<ol style="list-style-type: none"> Skin cancers (C44_) with histology 8000-8110 (after 1/1/2003); prior to that date, AJCC stage groups 2-4 in this group were reportable. CIS of the cervix and CIN III (after 1/1/96). PIN III (after 1/1/96). VIN III (after 1/1/96). VAIN III (after 1/1/96). AIN (after 1/1/96). 	<ol style="list-style-type: none"> Skin cancers (C44_) with histologies 8000-8005, 8010-8046, 8050-8084, 8090-8110. CIS of the cervix and CIN III (after 1/1/96). PIN III (after 1/1/2001). 	<ol style="list-style-type: none"> Skin cancers (C44_) with histologies 8000-8005, 8010-8046, 8050-8084, 8090-8110. CIS of the cervix and CIN III. PIN III (after 1/1/2001).
Multiple Primary Rules	Follows SEER rules with the following exception: when there is an <i>in situ</i> followed by an invasive cancer at the same site more than 2 months apart, do not report the invasive cancer as a second primary if stated by the physician to be a recurrence.	Follows SEER rules.	Follows SEER rules.
Ambiguous Terminology Considered as Diagnostic of Cancer	<p>apparent(ly) appears comparable with compatible with consistent with favors malignant appearing most likely presumed probable suspect(ed) suspicious (for) typical of</p> <p>Exception: if the cytology is reported as "suspicious" and neither a positive biopsy nor a physician's clinical impression supports the cytology findings, do not consider as diagnosis of cancer.</p>	<p>apparent(ly) appears comparable with compatible with consistent with favors malignant appearing most likely presumed probable suspect(ed) suspicious (for) typical of</p> <p>Exception: if the cytology is reported as "suspicious" and neither a positive biopsy nor a physician's clinical impression supports the cytology findings, do not consider as diagnosis of cancer.</p>	Not addressed.
Ambiguous Terminology NOT Considered as Diagnostic of Cancer	<p>cannot be ruled out equivocal possible potentially malignant questionable suggests worrisome</p>	<p>cannot be ruled out equivocal possible potentially malignant questionable suggests worrisome</p>	Not addressed.

* Juvenile astrocytomas should be reported as 9421/3.

CHAPTER VIII

REQUIRED STATUS TABLE (ITEM # ORDER)

The following table presents Version 11 of the NAACCR required status summarizing the requirements and recommendations for collection of each item by standard-setting groups. Differences from Version 10.2 are marked "Revised," "New," or "Retired" in the "Note" column of the table. Revised and new items are summarized in Appendix F.

NPCR	Refers to requirements and recommendations of the NPCR regarding data items that should be collected or computed by NPCR state registries. Note: Personal identifying data items that are collected are not transmitted to CDC.
COC	Refers to requirements of COC. Facilities should refer to the COC <i>FORDS Manual</i> for further clarification of required fields.
SEER	Refers to requirements of NCI's SEER Program. Facilities and central registries should refer to the <i>SEER Program Code Manual</i> for further clarification of required fields.

Exchange Elements for Hospital to Central and Central to Central

The target audience for this set of requirements is comprised of the various designers of registry software, at the hospital, central registry, and national levels. In the Exchange Elements columns data items marked are either required by key national organizations for cancer reporting or are of special importance in the unambiguous communication of reports and the proper linking of records. A clear distinction is made between items required for facilities reporting to central registries (labeled Hosp -> Central), and those items that central registries should use when sending cases to other central registries (labeled Central -> Central). 'T' is used when the data is vital to a complete exchange record. If a data item is unknown, it should have the proper code for unknown assigned. It is not specified how registries should handle records that have empty T fields. 'T*' means the vendor should convey the data if it is available for any of the cases, and otherwise they can leave the field empty. The receiving end (central registry) may, of course, ignore these items if they so choose. 'TH' means only certain cases diagnosed before 2004 may require these fields. Some central registries have additional required data fields. For these, vendors should contact the central registry directly.

Standards for Cancer Registries, Volume II: Data Standards and Data Dictionary, Tenth Edition

Item	Item Name	NPCR		COC		SEER		Exchange Elements		Source of Standard	Note
		Collect	Transmit	Collect	Transmit	Collect	Transmit	Hosp->Central	Central->Central		
10	Record Type	.	R	.	R	.	R	T	T	NAACCR	Revised
20	Patient ID Number	R	R	.	.	R	R	.	T	Reporting Registry	Revised
21	Patient System ID-Hosp	T	.	NAACCR	New
30	Registry Type	T	NAACCR	Revised
35	FIN Coding System	NAACCR	Revised
37	Reserved 00		Revised
40	Registry ID	.	R	.	.	R	R	T	T	NAACCR	Revised
50	NAACCR Record Version	.	R	.	R	.	.	T	T	NAACCR	Revised
60	Tumor Record Number	S	S	T	T	NAACCR	Revised
70	Addr at DX--City	R	.	R	R	R	.	T	T	COC	Revised
80	Addr at DX--State	R	R	R	R	R	.	T	T	COC	Revised
90	County at DX	R	R	R	R	R	R	T	T	FIPS/SEER	Revised
100	Addr at DX--Postal Code	R	R	R	R	R	.	T	T	COC	Revised
110	Census Tract 1970/80/90	RH*	RH*	.	.	RH	RH	.	T*	SEER	Revised
120	Census Cod Sys 1970/80/90	RH*	RH*	.	.	RH	RH	.	T*	SEER	Revised
130	Census Tract 2000	R	R	.	.	R	R	.	T*	NAACCR	Revised
140	Census Tract Cod Sys--Alt		Retired
150	Marital Status at DX	R	R	.	.	SEER	Revised
160	Race 1	R	R	R	R	R	R	T	T	SEER/COC	Revised
161	Race 2	R	R	R	R	R	R	T	T	SEER/COC	Revised
162	Race 3	R	R	R	R	R	R	T	T	SEER/COC	Revised
163	Race 4	R	R	R	R	R	R	T	T	SEER/COC	Revised
164	Race 5	R	R	R	R	R	R	T	T	SEER/COC	Revised
170	Race Coding Sys--Current	.	.	R	R	.	.	T	T	NAACCR	Revised
180	Race Coding Sys--Original	.	.	R	R	.	.	T	T	NAACCR	Revised
190	Spanish/Hispanic Origin	R	R	R	R	R	R	T	T	SEER/COC	Revised
191	NHIA Derived Hisp Origin	D	R	.	.	R	R	.	.	NAACCR	Revised
192	IHS Link	R*	R*	NPCR	New
200	Computed Ethnicity	R	R	.	.	R	R	.	.	SEER	Revised
210	Computed Ethnicity Source	R	R	.	.	R	R	.	.	SEER	Revised
220	Sex	R	R	R	R	R	R	T	T	SEER/COC	Revised
230	Age at Diagnosis	R	R	R	R	R	R	.	.	SEER/COC	Revised
240	Birth Date	R	R	R	R	R	R	T	T	SEER/COC	Revised
250	Birthplace	R*	R*	R	R	R	R	T*	T	SEER/COC	Revised
260	Religion	Varies	Revised
270	Occupation Code--Census	R*	R*	Census/NPCR	Revised
280	Industry Code--Census	R*	R*	Census/NPCR	Revised
290	Occupation Source	R*	R*	NPCR	Revised
300	Industry Source	R*	R*	NPCR	Revised
310	Text--Usual Occupation	R*	T*	T*	NPCR	Revised
320	Text--Usual Industry	R*	T*	T*	NPCR	Revised
330	Occup/Ind Coding System	R*	R*	NPCR	Revised
340	Tobacco History	Varies	Revised
350	Alcohol History	Varies	Revised
360	Family History of Cancer	Varies	Revised
362	Census Tract Block Group	Census	Revised
364	Census Tr Cert 1970/80/90	RH*	RH*	.	.	RH	RH	.	.	SEER	Revised
365	Census Tr Certainty 2000	R	R	.	.	R	R	.	.	NAACCR	Revised
366	GIS Coordinate Quality	R*	R*	NAACCR	New
370	Reserved 01		Revised
380	Sequence Number--Central	R	R	.	.	R	R	.	T	SEER	Revised
390	Date of Diagnosis	R	R	R	R	R	R	T	T	SEER/COC	Revised
400	Primary Site	R	R	R	R	R	R	T	T	SEER/COC	Revised
410	Laterality	R	R	R	R	R	R	T	T	SEER/COC	Revised
419	Morph--Type&Behav ICD-O-2		
420	Histology (92-00) ICD-O-2	RH	RH	RH	RH	RH	RH	TH	TH	SEER/COC	Revised
430	Behavior (92-00) ICD-O-2	RH	RH	RH	RH	RH	RH	TH	TH	SEER/COC	Revised

Codes for Recommendations: R = Required. RH = Historically collected and currently transmitted. RC = Collected by SEER from COC-approved hospitals. RS = Required, site specific. S = Supplementary/recommended. D = Derived. * = No recommendations. # = Central registries may code available data using either the SEER or COC data item and associated rules. T = data is vital to complete exchange record. TH - cases diagnosed before 2004, transmit data if available in exchange record. T* - transmit data if available for any case in exchange record.

Standards for Cancer Registries, Volume II: Data Standards and Data Dictionary, Tenth Edition

Item	Item Name	NPCR		COC		SEER		Exchange Elements		Source of Standard	Note
		Collect	Transmit	Collect	Transmit	Collect	Transmit	Hosp-> Central	Central-> Central		
440	Grade	R	R	R	R	R	R	T	T	SEER/COC	Revised
442	Ambiguous Terminology DX	R	R	T*	T*	SEER	New
443	Date of Conclusive DX	R	R	T*	T*	SEER	New
444	Mult Tum Rpt as One Prim	R	R	T*	T*	SEER	New
445	Date of Multiple Tumors	R	R	T*	T*	SEER	New
446	Multiplicity Counter	R	R	T*	T*	SEER	New
447	Number of Tumors/Hist	R	R	T*	T*	NAACCR	New
450	Site Coding Sys--Current	R	R	R	R	.	.	T	T	NAACCR	Revised
460	Site Coding Sys--Original	.	.	R	R	.	.	T	T	NAACCR	Revised
470	Morph Coding Sys--Current	R	R	R	R	.	.	T	T	NAACCR	Revised
480	Morph Coding Sys--Originl	.	.	R	R	.	.	T	T	NAACCR	Revised
490	Diagnostic Confirmation	R	R	R	R	R	R	T	T	SEER/COC	Revised
500	Type of Reporting Source	R	R	.	.	R	R	T	T	SEER	Revised
501	Casefinding Source	R	.	.	.	R	R	T*	T*	NAACCR	New
510	Screening Date	NAACCR	Revised
520	Screening Result	NAACCR	Revised
521	Morph--Type&Behav ICD-O-3		
522	Histologic Type ICD-O-3	R	R	R	R	R	R	T	T	SEER/COC	Revised
523	Behavior Code ICD-O-3	R	R	R	R	R	R	T	T	SEER/COC	Revised
530	Reserved 02		Revised
535	Reserved 25		New
538	Reporting Hospital FAN		Retired
540	Reporting Hospital	R	.	R	R	R	.	T	.	COC	Revised
550	Accession Number--Hosp	.	.	R	R	R	.	T*	.	COC	Revised
560	Sequence Number--Hospital	.	.	R	R	R	.	T	.	COC	Revised
570	Abstracted By	.	.	R	R	R	.	.	.	COC	Revised
580	Date of 1st Contact	R	.	R	R	.	.	T	.	COC	Revised
590	Date of Inpatient Adm	NAACCR	Revised
600	Date of Inpatient Disch	NAACCR	Revised
610	Class of Case	R	.	R	R	RC	.	T	.	COC	Revised
615	Reserved 26		New
620	Year First Seen This CA		Retired
630	Primary Payer at DX	R	R	R	R	COC	Revised
635	Reserved 27		New
640	Inpatient/Outpt Status		Retired
650	Presentation at CA Conf		Retired
660	Date of CA Conference		Retired
670	RX Hosp--Surg Prim Site	.	.	R	R	R	.	T*	.	COC	Revised
672	RX Hosp--Scope Reg LN Sur	.	.	R	R	R	.	T*	.	COC	Revised
674	RX Hosp--Surg Oth Reg/Dis	.	.	R	R	R	.	T*	.	COC	Revised
676	RX Hosp--Reg LN Removed	.	.	.	RH	.	.	T*	.	COC	Revised
680	Reserved 03		Revised
690	RX Hosp--Radiation	.	.	.	RH	RH	.	TH*	.	SEER/COC	Revised
700	RX Hosp--Chemo	.	.	R	R	R	.	T*	.	COC	Revised
710	RX Hosp--Hormone	.	.	R	R	R	.	T*	.	COC	Revised
720	RX Hosp--BRM	.	.	R	R	R	.	T*	.	COC	Revised
730	RX Hosp--Other	.	.	R	R	R	.	T*	.	COC	Revised
740	RX Hosp--DX/Stg Proc	.	.	R	R	COC	Revised
741	Reserved 28		New
742	RX Hosp--Screen/BX Proc1		Retired
743	RX Hosp--Screen/BX Proc2		Retired
744	RX Hosp--Screen/BX Proc3		Retired
745	RX Hosp--Screen/BX Proc4		Retired
746	RX Hosp--Surg Site 98-02	.	.	.	RH	RH	.	TH*	.	COC	Revised
747	RX Hosp--Scope Reg 98-02	.	.	.	RH	RH	.	TH*	.	COC	Revised
748	RX Hosp--Surg Oth 98-02	.	.	.	RH	RH	.	TH*	.	COC	Revised
750	Reserved 04		Revised
759	SEER Summary Stage 2000	RH	RH	RH	RH	.	S	TH*	TH*	SEER	Revised
760	SEER Summary Stage 1977	RH	RH	RH	RH	.	S	TH*	TH*	SEER	Revised

Codes for Recommendations: R = Required. RH = Historically collected and currently transmitted. RC = Collected by SEER from COC-approved hospitals. RS = Required, site specific. S = Supplementary/recommended. D = Derived. . = No recommendations. * = When available. # = Central registries may code available data using either the SEER or COC data item and associated rules. ^ = These text requirements may be met with one or several text block fields. T = data is vital to complete exchange record. TH - cases diagnosed before 2004, transmit data if available in exchange record. T* - transmit data if available for any case in exchange record.

Standards for Cancer Registries, Volume II: Data Standards and Data Dictionary, Tenth Edition

Item	Item Name	NPCR		COC		SEER		Exchange Elements		Source of Standard	Note
		Collect	Transmit	Collect	Transmit	Collect	Transmit	Hosp->Central	Central->Central		
765	Reserved 29		New
770	Loc/Reg/Distant Stage		Retired
779	Extent of Disease 10-Dig		
780	EOD--Tumor Size	.	.	RH	RH	RH	RH	TH*	TH*	SEER/COC	Revised
790	EOD--Extension	RH	RH	TH*	TH*	SEER	Revised
800	EOD--Extension Prost Path	RH	RH	TH*	TH*	SEER	Revised
810	EOD--Lymph Node Involv	RH	RH	TH*	TH*	SEER	Revised
820	Regional Nodes Positive	.	.	R	R	R	R	T*	T*	SEER/COC	Revised
830	Regional Nodes Examined	.	.	R	R	R	R	T*	T*	SEER/COC	Revised
840	EOD--Old 13 Digit	RH	RH	.	.	SEER	Revised
850	EOD--Old 2 Digit	RH	RH	.	.	SEER	Revised
860	EOD--Old 4 Digit	RH	RH	.	.	SEER	Revised
870	Coding System for EOD	RH	RH	.	TH*	SEER	Revised
880	TNM Path T	.	.	R	R	.	.	T*	T*	AJCC	Revised
890	TNM Path N	.	.	R	R	.	.	T*	T*	AJCC	Revised
900	TNM Path M	.	.	R	R	.	.	T*	T*	AJCC	Revised
910	TNM Path Stage Group	.	.	R	R	.	.	T*	T*	AJCC	Revised
920	TNM Path Descriptor	.	.	R	R	.	.	T*	T*	COC	Revised
930	TNM Path Staged By	.	.	R	R	.	.	T*	T*	COC	Revised
940	TNM Clin T	.	.	R	R	.	.	T*	T*	AJCC	Revised
950	TNM Clin N	.	.	R	R	.	.	T*	T*	AJCC	Revised
960	TNM Clin M	.	.	R	R	.	.	T*	T*	AJCC	Revised
970	TNM Clin Stage Group	.	.	R	R	.	.	T*	T*	AJCC	Revised
980	TNM Clin Descriptor	.	.	R	R	.	.	T*	T*	COC	Revised
990	TNM Clin Staged By	.	.	R	R	.	.	T*	T*	COC	Revised
995	Reserved 30		New
1000	TNM Other T		Retired
1010	TNM Other N		Retired
1020	TNM Other M		Retired
1030	TNM Other Stage Group		Retired
1040	TNM Other Staged By		Retired
1050	TNM Other Descriptor		Retired
1060	TNM Edition Number	.	.	R	R	.	.	T*	T*	COC	Revised
1065	Reserved 31		New
1070	Other Staging System		Retired
1080	Date of 1st Positive BX	NAACCR	Revised
1090	Site of Distant Met 1	.	.	.	RH	COC	Revised
1100	Site of Distant Met 2	.	.	.	RH	COC	Revised
1110	Site of Distant Met 3	.	.	.	RH	COC	Revised
1120	Pediatric Stage	COC	Revised
1130	Pediatric Staging System	COC	Revised
1140	Pediatric Staged By	COC	Revised
1150	Tumor Marker 1	.	.	.	RH	RH	RH	TH*	TH*	SEER	Revised
1160	Tumor Marker 2	.	.	.	RH	RH	RH	TH*	TH*	SEER	Revised
1170	Tumor Marker 3	.	.	.	RH	RH	RH	TH*	TH*	SEER	Revised
1180	Reserved 05		Revised
1190	Reserved 06		Revised
1200	RX Date--Surgery	.	.	R	R	S	.	T*	T*	COC	Revised
1210	RX Date--Radiation	.	.	R	R	S	.	T*	T*	COC	Revised
1220	RX Date--Chemo	TH*	TH*	NAACCR	Revised
1230	RX Date--Hormone	TH*	TH*	NAACCR	Revised
1240	RX Date--BRM	S	.	TH*	TH*	NAACCR	Revised
1250	RX Date--Other	.	.	R	R	S	.	T*	T*	COC	Revised
1260	Date of Initial RX--SEER	R#	R#	.	.	R	R	T*	T*	SEER	Revised
1270	Date of 1st Crs RX--COC	R#	R#	R	R	.	.	T*	T*	COC	Revised
1280	RX Date--DX/Stg Proc	.	.	R	R	COC	Revised
1290	RX Summ--Surg Prim Site	R	R	R	R	R	R	T	T*	SEER/COC	Revised
1292	RX Summ--Scope Reg LN Sur	R	R	R	R	R	R	T	T*	SEER/COC	Revised
1294	RX Summ--Surg Oth Reg/Dis	R	R	R	R	R	R	T	T*	SEER/COC	Revised

Codes for Recommendations: R = Required. RH = Historically collected and currently transmitted. RC = Collected by SEER from COC-approved hospitals. RS = Required, site specific. S = Supplementary/recommended. D = Derived. * = No recommendations. * = When available. # = Central registries may code available data using either the SEER or COC data item and associated rules. T = data is vital to complete exchange record. TH - cases diagnosed before 2004, transmit data if available in exchange record. T* - transmit data if available for any case in exchange record.

Standards for Cancer Registries, Volume II: Data Standards and Data Dictionary, Tenth Edition

Item	Item Name	NPCR		COC		SEER		Exchange Elements		Source of Standard	Note
		Collect	Transmit	Collect	Transmit	Collect	Transmit	Hosp->Central	Central->Central		
1296	RX Summ--Reg LN Examined	RH	.	.	RH	RH	RH	TH*	TH*	SEER/COC	Revised
1300	Reserved 07	Revised
1310	RX Summ--Surgical Approach	.	.	.	RH	COC	Revised
1320	RX Summ--Surgical Margins	.	.	R	R	COC	Revised
1330	RX Summ--Reconstruct 1st	RH	RH	.	.	SEER	Revised
1340	Reason for No Surgery	R	R	R	R	R	R	T	T*	SEER/COC	Revised
1350	RX Summ--DX/Stg Proc	.	.	R	R	COC	Revised
1355	Reserved 22	Revised
1360	RX Summ--Radiation	.	.	.	RH	R	R	TH*	TH*	SEER	Revised
1370	RX Summ--Rad to CNS	R	R	.	.	SEER/COC	Revised
1380	RX Summ--Surg/Rad Seq	R	R	R	R	R	R	T	T*	SEER/COC	Revised
1390	RX Summ--Chemo	R	R	R	R	R	R	T*	T*	SEER/COC	Revised
1400	RX Summ--Hormone	R	R	R	R	R	R	T*	T*	SEER/COC	Revised
1410	RX Summ--BRM	R	R	R	R	R	R	T*	T*	SEER/COC	Revised
1420	RX Summ--Other	R	R	R	R	R	R	T*	T*	SEER/COC	Revised
1430	Reason for No Radiation	.	.	R	R	COC	Revised
1435	Reserved 32	New
1440	Reason for No Chemo	Retired
1450	Reason for No Hormone	Retired
1460	RX Coding System--Current	R	R	R	R	.	RH	T*	T*	NAACCR	Revised
1465	Reserved 33	New
1470	Protocol Eligibility Stat	Retired
1480	Protocol Participation	Retired
1490	Referral to Support Serv	Retired
1500	First Course Calc Method	NAACCR	Revised
1510	Rad--Regional Dose: CGY	.	.	R	R	.	.	T	.	COC	Revised
1520	Rad--No of Treatment Vol	.	.	R	R	.	.	T	.	COC	Revised
1530	Rad--Elapsed RX Days	Retired
1535	Reserved 34	New
1540	Rad--Treatment Volume	.	.	R	R	.	.	T	.	COC	Revised
1550	Rad--Location of RX	.	.	R	R	.	.	T	.	COC	Revised
1555	Reserved 35	New
1560	Rad--Intent of Treatment	Retired
1570	Rad--Regional RX Modality	R	R	R	R	RC	.	T	T*	COC	Revised
1580	Rad--RX Completion Status	Retired
1590	Rad--Local Control Status	Retired
1600	Chemotherapy Field 1	Retired
1610	Chemotherapy Field 2	Retired
1620	Chemotherapy Field 3	Retired
1630	Chemotherapy Field 4	Retired
1635	Reserved 23	Revised
1639	RX Summ--Systemic Sur Seq	R	R	R	R	R	R	T	T	COC	New
1640	RX Summ--Surgery Type	RH	RH	TH*	TH*	SEER	Revised
1641	Reserved 36	New
1642	RX Summ--Screen/BX Proc1	Retired
1643	RX Summ--Screen/BX Proc2	Retired
1644	RX Summ--Screen/BX Proc3	Retired
1645	RX Summ--Screen/BX Proc4	Retired
1646	RX Summ--Surg Site 98-02	RH	.	RH	RH	RH	RH	TH*	TH*	SEER/COC	Revised
1647	RX Summ--Scope Reg 98-02	RH	.	RH	RH	RH	RH	TH*	TH*	SEER/COC	Revised
1648	RX Summ--Surg Oth 98-02	RH	.	RH	RH	RH	RH	TH*	TH*	SEER/COC	Revised
1650	Reserved 08	Revised
1660	Subsq RX 2nd Course Date	COC	Revised
1670	Subsq RX 2nd Course Codes	Revised
1671	Subsq RX 2nd Course Surg	COC	Revised
1672	Subsq RX 2nd Course Rad	COC	Revised
1673	Subsq RX 2nd Course Chemo	COC	Revised
1674	Subsq RX 2nd Course Horm	COC	Revised
1675	Subsq RX 2nd Course BRM	COC	Revised

Codes for Recommendations: R = Required. RH = Historically collected and currently transmitted. RC = Collected by SEER from COC-approved hospitals. RS = Required, site specific. S = Supplementary/recommended. D = Derived. * = No recommendations. * = When available. # = Central registries may code available data using either the SEER or COC data item and associated rules. ^ = These text requirements may be met with one or several text block fields. T = data is vital to complete exchange record. TH – cases diagnosed before 2004, transmit data if available in exchange record. T* - transmit data if available for any case in exchange record.

Standards for Cancer Registries, Volume II: Data Standards and Data Dictionary, Tenth Edition

Item	Item Name	NPCR		COC		SEER		Exchange Elements		Source of Standard	Note
		Collect	Transmit	Collect	Transmit	Collect	Transmit	Hosp->Central	Central->Central		
1676	Subsq RX 2nd Course Oth	COC	Revised
1677	Subsq RX 2nd--Scope LN SU	COC	Revised
1678	Subsq RX 2nd--Surg Oth	COC	Revised
1679	Subsq RX 2nd--Reg LN Rem	COC	Revised
1680	Subsq RX 3rd Course Date	COC	Revised
1690	Subsq RX 3rd Course Codes		Revised
1691	Subsq RX 3rd Course Surg	COC	Revised
1692	Subsq RX 3rd Course Rad	COC	Revised
1693	Subsq RX 3rd Course Chemo	COC	Revised
1694	Subsq RX 3rd Course Horm	COC	Revised
1695	Subsq RX 3rd Course BRM	COC	Revised
1696	Subsq RX 3rd Course Oth	COC	Revised
1697	Subsq RX 3rd--Scope LN Su	COC	Revised
1698	Subsq RX 3rd--Surg Oth	COC	Revised
1699	Subsq RX 3rd--Reg LN Rem	COC	Revised
1700	Subsq RX 4th Course Date	COC	Revised
1710	Subsq RX 4th Course Codes		Revised
1711	Subsq RX 4th Course Surg	COC	Revised
1712	Subsq RX 4th Course Rad	COC	Revised
1713	Subsq RX 4th Course Chemo	COC	Revised
1714	Subsq RX 4th Course Horm	COC	Revised
1715	Subsq RX 4th Course BRM	COC	Revised
1716	Subsq RX 4th Course Oth	COC	Revised
1717	Subsq RX 4th--Scope LN Su	COC	Revised
1718	Subsq RX 4th--Surg Oth	COC	Revised
1719	Subsq RX 4th--Reg LN Rem	COC	Revised
1720	Subsq RX 5th Course Date		Retired
1725	Reserved 37		New
1726	Reserved 38		New
1730	Subsq RX 5th Course Codes		Retired
1731	Subsq RX 5th Course Surg		Retired
1732	Subsq RX 5th Course Rad		Retired
1733	Subsq RX 5th Course Chemo		Retired
1734	Subsq RX 5th Course Horm		Retired
1735	Subsq RX 5th Course BRM		Retired
1736	Subsq RX 5th Course Oth		Retired
1737	Subsq RX 5th--Scope LN Su		Retired
1738	Subsq RX 5th--Surg Oth		Retired
1739	Subsq RX 5th--Reg LN Rem		Retired
1740	Reserved 09		Revised
1741	Subsq RX--Reconstruct Del	COC	Revised
1750	Date of Last Contact	R	R	R	R	R	R	T	T	SEER/COC	Revised
1760	Vital Status	R	R	R	R	R	R	T	T	SEER/COC	Revised
1770	Cancer Status	.	.	R	R	COC	Revised
1780	Quality of Survival	COC	Revised
1790	Follow-Up Source	.	.	R	R	.	.	T*	.	COC	Revised
1791	Follow-up Source Central	R	R	T*	NAACCR	New
1800	Next Follow-Up Source	.	.	R	COC	Revised
1810	Addr Current--City	.	.	R	.	R	.	T*	.	COC	Revised
1820	Addr Current--State	.	.	R	.	R	.	T*	.	COC	Revised
1830	Addr Current--Postal Code	.	.	R	.	R	.	T*	.	COC	Revised
1835	Reserved 10		Revised
1840	County--Current	NAACCR	Revised
1842	Follow-Up Contact--City	R	.	T*	.	SEER	Revised
1844	Follow-Up Contact--State	R	.	T*	.	SEER	Revised
1846	Follow-Up Contact--Postal	R	.	T*	.	SEER	Revised
1850	Unusual Follow-Up Method	COC	Revised
1860	Recurrence Date--1st	.	.	R	R	RC	.	T*	.	COC	Revised
1870	Recurrence Distant Sites		Retired

Codes for Recommendations: R = Required. RH = Historically collected and currently transmitted. RC = Collected by SEER from COC-approved hospitals. RS = Required, site specific. S = Supplementary/recommended. D = Derived. * = No recommendations. * = When available. # = Central registries may code available data using either the SEER or COC data item and associated rules. T = data is vital to complete exchange record. TH – cases diagnosed before 2004, transmit data if available in exchange record. T*– transmit data if available for any case in exchange record.

Standards for Cancer Registries, Volume II: Data Standards and Data Dictionary, Tenth Edition

Item	Item Name	NPCR		COC		SEER		Exchange Elements		Source of Standard	Note
		Collect	Transmit	Collect	Transmit	Collect	Transmit	Hosp-> Central	Central-> Central		
1871	Recurrence Distant Site 1	NAACCR	Revised
1872	Recurrence Distant Site 2	NAACCR	Revised
1873	Recurrence Distant Site 3	NAACCR	Revised
1880	Recurrence Type--1st	.	.	R	R	RC	.	T*	.	COC	Revised
1890	Recurrence Type--1st-Oth		Retired
1895	Reserved 39		New
1900	Reserved 11		Revised
1910	Cause of Death	R	R	.	.	R	R	.	T	SEER	Revised
1920	ICD Revision Number	R	R	.	.	R	R	.	T	SEER	Revised
1930	Autopsy	NAACCR	Revised
1940	Place of Death	R	T*	T*	NPCR	Revised
1950	Reserved 12		Revised
1960	Site (73-91) ICD-O-1	RH	RH	.	.	SEER	Revised
1970	Morph (73-91) ICD-O-1	SEER	Revised
1971	Histology (73-91) ICD-O-1	RH	RH	.	.	SEER	Revised
1972	Behavior (73-91) ICD-O-1	RH	RH	.	.	SEER	Revised
1973	Grade (73-91) ICD-O-1	RH	RH	.	.	SEER	Revised
1980	ICD-O-2 Conversion Flag	.	.	R	R	R	R	T*	T*	SEER	Revised
1981	Over-ride SS/NodesPos	T*	T*	NAACCR	Revised
1982	Over-ride SS/TNM-N	T*	T*	NAACCR	Revised
1983	Over-ride SS/TNM-M	T*	T*	NAACCR	Revised
1984	Over-ride SS/DisMet1	T*	T*	NAACCR	Revised
1985	Over-ride Acscn/Class/Seq	.	.	R	R	.	.	T*	T*	COC	Revised
1986	Over-ride HospSeq/DxConf	.	.	R	R	.	.	T*	T*	COC	Revised
1987	Over-ride COC-Site/Type	.	.	R	R	.	.	T*	T*	COC	Revised
1988	Over-ride HospSeq/Site	.	.	R	R	.	.	T*	T*	COC	Revised
1989	Over-ride Site/TNM-StgGrp	.	.	R	R	.	.	T*	T*	COC	Revised
1990	Over-ride Age/Site/Morph	R	R	R	R	R	R	T*	T*	SEER	Revised
2000	Over-ride SeqNo/DxConf	R	R	.	.	R	R	T*	T*	SEER	Revised
2010	Over-ride Site/Lat/SeqNo	R	R	.	.	R	R	T*	T*	SEER	Revised
2020	Over-ride Surg/DxConf	R	R	R	R	R	R	T*	T*	SEER	Revised
2030	Over-ride Site/Type	R	R	R	R	R	R	T*	T*	SEER	Revised
2040	Over-ride Histology	R	R	R	R	R	R	T*	T*	SEER	Revised
2050	Over-ride Report Source	R	R	.	.	R	R	T*	T*	SEER	Revised
2060	Over-ride Ill-define Site	R	R	.	.	R	R	T*	T*	SEER	Revised
2070	Over-ride Leuk, Lymphoma	R	R	R	R	R	R	T*	T*	SEER	Revised
2071	Over-ride Site/Behavior	R	R	R	R	R	R	T*	T*	SEER	Revised
2072	Over-ride Site/EOD/DX Dt	R	R	T*	T*	SEER	Revised
2073	Over-ride Site/Lat/EOD	R	R	T*	T*	SEER	Revised
2074	Over-ride Site/Lat/Morph	R	R	R	R	R	R	T*	T*	SEER	Revised
2080	Reserved 13		Retired
2081	CRC CHECKSUM	S	S	.	.	NAACCR	Revised
2082	Reserved 24		Revised
2090	Date Case Completed	NAACCR	Revised
2100	Date Case Last Changed	NAACCR	Revised
2110	Date Case Report Exported	R	.	.	R	.	.	T	.	NPCR	Revised
2111	Date Case Report Received	R	NPCR	Revised
2112	Date Case Report Loaded	R	NPCR	Revised
2113	Date Tumor Record Availbl	R	NPCR	Revised
2114	Future Use Timeliness 1		Retired
2115	Future Use Timeliness 2		Retired
2116	CD-O-3 Conversion Flag	R	R	R	R	R	R	T	T	SEER/COC	Revised
2120	SEER Coding Sys--Current	R	T*	T*	NAACCR	Revised
2130	SEER Coding Sys--Original	R	T*	T*	NAACCR	Revised
2140	COC Coding Sys--Current	.	.	R	R	.	.	T*	T*	COC	Revised
2150	COC Coding Sys--Original	.	.	R	R	.	.	T*	T*	COC	Revised
2160	Subsq Report for Primary		Retired
2161	Reserved 20		Retired
2170	Vendor Name	.	.	.	R	.	.	T	T	NAACCR	Revised

Codes for Recommendations: R = Required. RH = Historically collected and currently transmitted. RC = Collected by SEER from COC-approved hospitals. RS = Required, site specific. S = Supplementary/recommended. D = Derived. * = No recommendations. # = When available. # = Central registries may code available data using either the SEER or COC data item and associated rules. ^ = These text requirements may be met with one or several text block fields. T = data is vital to complete exchange record. TH – cases diagnosed before 2004, transmit data if available in exchange record. T*- transmit data if available for any case in exchange record.

Standards for Cancer Registries, Volume II: Data Standards and Data Dictionary, Tenth Edition

Item	Item Name	NPCR		COC		SEER		Exchange Elements		Source of Standard	Note
		Collect	Transmit	Collect	Transmit	Collect	Transmit	Hosp->Central	Central->Central		
2180	SEER Type of Follow-Up	R	R	.	.	SEER	Revised
2190	SEER Record Number	R	.	.	SEER	Revised
2200	Diagnostic Proc 73-87	RH	RH	.	.	SEER	Revised
2210	Reserved 14		Retired
2220	State/Requestor Items	Varies	Revised
2230	Name--Last	R	.	R	.	R	.	T	T	NAACCR	Revised
2240	Name--First	R	.	R	.	R	.	T	T	NAACCR	Revised
2250	Name--Middle	R	.	R	.	R	.	T*	T*	COC	Revised
2260	Name--Prefix	SEER	Revised
2270	Name--Suffix	R	.	T*	T*	SEER	Revised
2280	Name--Alias	R	.	.	.	R	.	T*	T*	SEER	Revised
2290	Name--Spouse/Parent	NAACCR	Revised
2300	Medical Record Number	R	.	R	.	R	.	T	.	COC	Revised
2310	Military Record No Suffix	.	.	R	COC	Revised
2320	Social Security Number	R	.	R	.	R	.	T	T	COC	Revised
2330	Addr at DX--No & Street	R	.	R	.	R	.	T	T	COC	Revised
2335	Addr at DX--Supplementl	R	.	R	.	.	R	T*	T*	COC	Revised
2350	Addr Current--No & Street	.	.	R	.	R	.	T*	T*	COC	Revised
2352	Latitude	S	.	.	.	NAACCR	Revised
2354	Longitude	S	.	.	.	NAACCR	Revised
2355	Addr Current--Supplementl	.	.	R	.	R	.	T*	.	COC	Revised
2360	Telephone	.	.	R	.	R	.	T*	T*	COC	Revised
2370	DC State		Retired
2371	Reserved 21		Retired
2380	DC State File Number	R	T*	State	Revised
2390	Name--Maiden	R	.	.	.	R	.	T*	T*	SEER	Revised
2392	Follow-Up Contact--No&St	R	.	.	.	SEER	Revised
2393	Follow-Up Contact--Suppl	R	.	.	.	SEER	Revised
2394	Follow-Up Contact--Name	R	.	.	.	SEER	Revised
2400	Reserved 16		Retired
2410	Institution Referred From	.	.	R	.	.	.	T*	.	COC	Revised
2420	Institution Referred To	.	.	R	.	.	.	T*	.	COC	Revised
2430	Last Follow-Up Hospital		Retired
2435	Reserved 40		New
2440	Following Registry	.	.	R	.	R	.	.	.	COC	Revised
2450	Reserved 17		Retired
2460	Physician--Managing	NAACCR	Revised
2470	Physician--Follow-Up	.	.	R	.	R	.	T*	T*	COC	Revised
2480	Physician--Primary Surg	.	.	R	COC	Revised
2490	Physician 3	.	.	R	COC	Revised
2500	Physician 4	.	.	R	COC	Revised
2520	Text--DX Proc--PE	R^	.	.	.	R	.	T*	T*	NPCR	Revised
2530	Text--DX Proc--X-ray/Scan	R^	.	.	.	R	.	T*	T*	NPCR	Revised
2540	Text--DX Proc--Scopes	R^	.	.	.	R	.	T*	T*	NPCR	Revised
2550	Text--DX Proc--Lab Tests	R^	.	.	.	R	.	T*	T*	NPCR	Revised
2560	Text--DX Proc--Op	R^	.	.	.	R	.	T*	T*	NPCR	Revised
2570	Text--DX Proc--Path	R^	.	.	.	R	.	T*	T*	NPCR	Revised
2580	Text--Primary Site Title	R^	.	.	.	R	.	T*	T*	NPCR	Revised
2590	Text--Histology Title	R^	.	.	.	R	.	T*	T*	NPCR	Revised
2600	Text--Staging	R^	.	.	.	R	.	T*	T*	NPCR	Revised
2610	RX Text--Surgery	R^	.	.	.	R	.	T*	T*	NPCR	Revised
2620	RX Text--Radiation (Beam)	R^	.	.	.	R	.	T*	T*	NPCR	Revised
2630	RX Text--Radiation Other	R^	.	.	.	R	.	T*	T*	NPCR	Revised
2640	RX Text--Chemo	R^	.	.	.	R	.	T*	T*	NPCR	Revised
2650	RX Text--Hormone	R^	.	.	.	R	.	T*	T*	NPCR	Revised
2660	RX Text--BRM	R^	.	.	.	R	.	T*	T*	NPCR	Revised
2670	RX Text--Other	R^	.	.	.	R	.	T*	T*	NPCR	Revised
2680	Text--Remarks	R	.	T*	T*	NPCR	Revised
2690	Place of Diagnosis	NPCR	Revised

Codes for Recommendations: R = Required. RH = Historically collected and currently transmitted. RC = Collected by SEER from COC-approved hospitals. RS = Required, site specific. S = Supplementary/recommended. D = Derived. * = No recommendations. * = When available. # = Central registries may code available data using either the SEER or COC data item and associated rules. T = data is vital to complete exchange record. TH - cases diagnosed before 2004, transmit data if available in exchange record. T*- transmit data if available for any case in exchange record.

Standards for Cancer Registries, Volume II: Data Standards and Data Dictionary, Tenth Edition

Item	Item Name	NPCR		COC		SEER		Exchange Elements		Source of Standard	Note
		Collect	Transmit	Collect	Transmit	Collect	Transmit	Hosp-> Central	Central-> Central		
2700	Reserved 19		Revised
2800	CS Tumor Size	.	.	R	R	R	R	T	T	AJCC	Revised
2810	CS Extension	R	.	R	R	R	R	T	T	AJCC	Revised
2820	CS Tumor SizeExt Eval	.	.	R	R	.	.	T*	T*	AJCC	Revised
2830	CS Lymph Nodes	R	.	R	R	R	R	T	T	AJCC	Revised
2840	CS Reg Node Eval	.	.	R	R	.	.	T*	T*	AJCC	Revised
2850	CS Mets at DX	R	.	R	R	R	R	T	T	AJCC	Revised
2860	CS Mets Eval	.	.	R	R	.	.	T*	T*	AJCC	Revised
2880	CS Site-Specific Factor 1	RS	.	R	R	R	R	T	T	AJCC	Revised
2890	CS Site-Specific Factor 2	.	.	R	R	R	R	T	T	AJCC	Revised
2900	CS Site-Specific Factor 3	RS	.	R	R	R	R	T	T	AJCC	Revised
2910	CS Site-Specific Factor 4	.	.	R	R	R	R	T	T	AJCC	Revised
2920	CS Site-Specific Factor 5	.	.	R	R	R	R	T	T	AJCC	Revised
2930	CS Site-Specific Factor 6	.	.	R	R	R	R	T	T	AJCC	Revised
2935	CS Version 1st	R	.	R	R	R	R	.	.	AJCC	Revised
2936	CS Version Latest	R	.	R	R	R	R	.	.	AJCC	Revised
2940	Derived AJCC T	.	.	D	D	D	D	T*	T*	AJCC	Revised
2950	Derived AJCC T Descriptor	.	.	D	D	.	.	T*	T*	AJCC	Revised
2960	Derived AJCC N	.	.	D	D	D	D	T*	T*	AJCC	Revised
2970	Derived AJCC N Descriptor	.	.	D	D	.	.	T*	T*	AJCC	Revised
2980	Derived AJCC M	.	.	D	D	D	D	T*	T*	AJCC	Revised
2990	Derived AJCC M Descriptor	.	.	D	D	.	.	T*	T*	AJCC	Revised
3000	Derived AJCC Stage Group	.	.	D	D	D	D	T*	T*	AJCC	Revised
3010	Derived SS1977	.	.	D	D	D	D	T*	T*	AJCC	Revised
3020	Derived SS2000	.	.	D	D	D	D	T*	T*	AJCC	Revised
3030	Derived AJCC--Flag	.	.	R	R	D	D	T*	T*	AJCC	Revised
3040	Derived SS1977-Flag	D	R	R	R	D	D	T*	T*	AJCC	Revised
3050	Derived SS2000-Flag	D	R	R	R	D	D	T*	T*	AJCC	Revised
3100	Archive FIN	.	.	R	R	COC	Revised
3110	Comorbid/Complication 1	.	.	R	R	.	.	T*	.	COC	Revised
3120	Comorbid/Complication 2	.	.	R	R	.	.	T*	.	COC	Revised
3130	Comorbid/Complication 3	.	.	R	R	.	.	T*	.	COC	Revised
3140	Comorbid/Complication 4	.	.	R	R	.	.	T*	.	COC	Revised
3150	Comorbid/Complication 5	.	.	R	R	.	.	T*	.	COC	Revised
3160	Comorbid/Complication 6	.	.	R	R	.	.	T*	.	COC	Revised
3161	Comorbid/Complication 7	.	.	R	R	.	.	T*	.	COC	New
3162	Comorbid/Complication 8	.	.	R	R	.	.	T*	.	COC	New
3163	Comorbid/Complication 9	.	.	R	R	.	.	T*	.	COC	New
3164	Comorbid/Complication 10	.	.	R	R	.	.	T*	.	COC	New
3165	ICD Revision Comorbid	.	.	R	R	.	.	T*	.	COC	New
3170	RX Date--Most Defin Surg	.	.	R	R	.	.	T*	.	COC	Revised
3180	RX Date--Surgical Disch	.	.	R	R	COC	Revised
3190	Readm Same Hosp 30 Days	.	.	R	R	COC	Revised
3200	Rad--Boost RX Modality	.	.	R	R	RC	.	T*	T*	COC	Revised
3210	Rad--Boost Dose cGy	.	.	R	R	COC	Revised
3220	RX Date--Radiation Ended	.	.	R	R	COC	Revised
3230	RX Date--Systemic	.	.	R	R	.	.	T*	T*	COC	Revised
3250	RX Summ--Transplnt/Endocr	R	R	R	R	R	R	T*	T*	COC	Revised
3260	Pain Assessment		Retired
3270	RX Summ--Palliative Proc	.	.	R	R	.	.	T*	.	COC	Revised
3280	RX Hosp--Palliative Proc	.	.	R	R	.	.	T*	.	COC	Revised
3300	RuralUrban Continuum 1993	D	NAACCR	Revised
3310	RuralUrban Continuum 2000	D	NAACCR	Revised

Codes for Recommendations: R = Required. RH = Historically collected and currently transmitted. RC = Collected by SEER from COC-approved hospitals. RS = Required, site specific. S = Supplementary/recommended. D = Derived. . = No recommendations. * = When available. # = Central registries may code available data using either the SEER or COC data item and associated rules. ^ = These text requirements may be met with one or several text block fields. T = data is vital to complete exchange record. TH - cases diagnosed before 2004, transmit data if available in exchange record. T* - transmit data if available for any case in exchange record.

Attachment 8
Federal Register Notice

to better describe geographic variation in cancer incidence throughout the country and provide incidence data on minority populations and rare cancers to further plan and evaluate state and national cancer control and prevention efforts.

Therefore, CDCs, NCCDPHP, Division of Cancer Prevention and Control proposes to continue to aggregate existing cancer incidence data from

states funded by the National Program of Cancer Registries into a national surveillance system.

These data are already collected and aggregated at the state level. Thus the additional burden for the states is small. Funded states are asked to continue to report cancer incidence data to CDC on an annual basis. Each state is requested to report a cumulative file containing incidence data from the first diagnosis

year for which the cancer registry collected data with the assistance of NPCR funds (e.g., 1995) through to 12 months past the close of the most recent diagnosis year (e.g., 2004).

NCCPHP is requesting a 3-year clearance for this project. There are no costs to respondents except their time to participate in the survey.

ESTIMATED ANNUALIZED BURDEN HOURS

Respondents	Number of respondents	Number of responses per respondent	Average burden per response (in hours)	Total burden hours
States, Territories, and the District of Columbia (Cancer Registries)	63	1	2	126
Total				126

Dated: May 3, 2006.
Joan F. Karr,
Acting Reports Clearance Officer, Centers for Disease Control and Prevention.
 [FR Doc. E6-7019 Filed 5-8-06; 8:45 am]
BILLING CODE 4163-18-P

DEPARTMENT OF HEALTH AND HUMAN SERVICES

Health Resources and Services Administration

Advisory Committee on Heritable Disorders and Genetic Diseases in Newborns and Children; Notice of Meeting

In accordance with section 10(a)(2) of the Federal Advisory Committee Act (Pub. L. 92-463), notice is hereby given of the following meeting:

Name: Advisory Committee on Heritable Disorders and Genetic Diseases in Newborns and Children (ACHDGDNC).

Dates and Times: June 5, 2006, 9 a.m. to 5 p.m. June 6, 2006, 8:30 a.m. to 3 p.m.

Place: Four Points Sheraton Downtown, Franklin AB Room, 1201 K Street, NW., Washington, DC 20005.

Status: The meeting will be open to the public with attendance limited to space availability.

Purpose: The Advisory Committee provides advice and recommendations concerning the grants and projects authorized under the Heritable Disorders Program and technical information to develop policies and priorities for this program. The Heritable Disorders Program was established to enhance the ability of State and local health agencies to provide for newborn and child screening, counseling and health care services for newborns and children having or at risk for heritable disorders. The Committee was established specifically to advise and guide the Secretary regarding the most appropriate application of universal newborn

screening tests, technologies, policies, guidelines and programs for effectively reducing morbidity and mortality in newborns and children having or at risk for heritable disorders.

Agenda: The meeting will be devoted to the decision making process for candidate conditions on the Newborn Screening Panel as well as the continued work and reports by the Committee's subcommittees on laboratory standards and procedures, follow-up treatment, education and training.

Proposed agenda items are subject to change.

Time will be provided each day for public comment. Individuals who wish to provide public comment or who plan to attend the meeting and need special assistance, such as sign language interpretation or other reasonable accommodations, should notify the ACHDGDNC Executive Secretary, Michele A. Lloyd-Puryear, M.D., Ph.D. (contact information provided below).

Contact Person: Anyone interested in obtaining a roster of members or other relevant information should write or contact Michele A. Lloyd-Puryear, M.D., Ph.D., Maternal and Child Health Bureau, Health Resources and Services Administration, Room 18A-19, Parklawn Building, 5600 Fishers Lane, Rockville, Maryland 20857, Telephone (301) 443-1080. Information on the Advisory Committee is available at <http://mchb.hrsa.gov/programs/genetics/committee>.

Dated: May 3, 2006.

Tina M. Cheatham,
Director, Division of Policy Review and Coordination.
 [FR Doc. E6-7020 Filed 5-8-06; 8:45 am]
BILLING CODE 4165-15-P

DEPARTMENT OF HEALTH AND HUMAN SERVICES

Indian Health Service

Tribal Management Grant Program

Announcement Type: New Discretionary Funding Cycle for Fiscal Year 2007.

Funding Announcement Number: HHS-2007-IHS-TMP-0001.

Catalog of Federal Domestic Assistance Number: 93.228.

Key Dates: *Training: Application Requirements Session:* May 10-11 and June 14-15, 2006; *Grantwriting Session:* May 22-26, 2006; *Application Deadline Date:* August 4, 2006; *Review Date:* October 2-6, 2006; *Application Notification:* November 13, 2006; *Earliest Anticipated Start Date:* January 1, 2007.

I. Funding Opportunity Description

The Indian Health Service (IHS) announces competitive grant applications for the Tribal Management Grant (TMG) Program. This program is authorized under section 103(b)(2) and section 103(e) of the Indian Self-Determination and Education Assistance Act, Public Law 93-638, as amended. The TMG Program is described at 93.228 in the Catalog of Federal Domestic Assistance.

The TMG program is a national competitive discretionary grant program pursuant to 45 CFR part 75 and 45 CFR part 92 established to assist Federally-recognized Tribes and Tribally-sanctioned Tribal organizations in assuming all or part of existing IHS programs, services, functions, and activities (PSFA) through a Title I contract and to assist established Title I contractors and Title V compactors to

Tuberculous Mycobacterium (NTM) Drug Susceptibility Testing (0920-0600)—Extension—National Center for Health Marketing (NCHM), Coordinating Center for Health Information and Service (CoCHIS), Centers for Disease Control and Prevention (CDC).

Background and Brief Description

As part of the continuing effort to support both domestic and global public health objectives for treatment of tuberculosis (TB), prevention of multi-drug resistance and surveillance programs, the Division of Laboratory Systems seeks to continue to collect information from domestic private clinical and public health laboratories twice per year. Participation and information collections from international laboratories are limited to those which have public health responsibilities for tuberculosis drug susceptibility testing and approval by

their national tuberculosis program. While the overall number of cases of TB in the U.S. has decreased, rates still remain high among foreign-born persons, prisoners, homeless populations, and individuals infected with HIV in major metropolitan areas. The rate of TB cases detected in foreign-born persons has been reported to be almost nine times higher than the rate among the U.S. born population.

CDC's goal to eliminate TB will be virtually impossible without considerable effort in assisting countries with heavy disease burden in the reduction of tuberculosis. The M.tuberculosis/NTM program supports this role by monitoring the level of performance and practices among laboratories performing M. tuberculosis susceptibility within the U.S, as well as internationally, to ensure high-quality laboratory testing, resulting in accurate and reliable results.

Information collected in this program includes the susceptibility test results of primary and secondary drugs, concentrations, and test methods performed by laboratories on a set of challenge isolates sent twice yearly. A portion of the response instrument collects demographic data such as laboratory type and the number of tests performed annually. By providing an evaluation program to assess the ability of the laboratories to test for drug resistant M. tuberculosis and selected strains of NTM, laboratories have a self-assessment tool to aid in maximizing their skills in susceptibility testing. Information obtained from laboratories on susceptibility testing practices and procedures assists with determining variables related to good performance, with assessing areas for training and with developing practice standards.

There are no cost to the respondents other than their time.

ESTIMATED ANNUALIZED BURDEN HOURS

Respondents	No. of respondents	Average number of responses per respondent	Average burden per response (in hours)	Total burden hours
Domestic Private/Public Laboratories	165	1	30/60	83
International Laboratories (with public health responsibilities)	165	1	30/60	83
Total	166

Dated: May 1, 2006.
Joan F. Karr,
Acting Reports Clearance Officer, Centers for Disease Control and Prevention.
 [FR Doc. E6-7002 Filed 5-8-06; 8:45 am]
BILLING CODE 4163-18-P

DEPARTMENT OF HEALTH AND HUMAN SERVICES

Centers for Disease Control and Prevention

[60Day-06-0469]

Proposed Data Collections Submitted for Public Comment and Recommendations

In compliance with the requirement of Section 3506(c)(2)(A) of the Paperwork Reduction Act of 1995 for opportunity for public comment on proposed data collection projects, the Centers for Disease Control and Prevention (CDC) will publish periodic summaries of proposed projects. To request more information on the proposed projects or to obtain a copy of the data collection plans and instruments, call 404-639-5960 and send comments to Seleda Perryman,

CDC Assistant Reports Clearance Officer, 1600 Clifton Road, MS-D74, Atlanta, GA 30333 or send an e-mail to omb@cdc.gov.

Comments are invited on: (a) Whether the proposed collection of information is necessary for the proper performance of the functions of the agency, including whether the information shall have practical utility; (b) the accuracy of the agency's estimate of the burden of the proposed collection of information; (c) ways to enhance the quality, utility, and clarity of the information to be collected; and (d) ways to minimize the burden of the collection of information on respondents, including through the use of automated collection techniques or other forms of information technology. Written comments should be received within 60 days of this notice.

Proposed Project

National Program of Cancer Registries—Cancer Surveillance System—Extension (OMB number 0920-0469)—National Center for Chronic Disease Prevention and Health Promotion (NCCDPHP), Centers for Disease Control and Prevention (CDC).

Background and Brief Description

The American Cancer Society estimated that about 1.37 million Americans were newly diagnosed with cancer in 2005 and that about 570,000 died from cancer in that same year. The National Institutes of Health estimates that in 2005, the cost of cancer was about \$209 billion, including \$74 billion direct costs to treat cancer, and \$136 billion indirect costs in lost productivity due to illness and premature death.

In 2002, CDC implemented the National Program of Cancer Registries (NPCR)—Cancer Surveillance System (CSS) to collect, evaluate and disseminate cancer incidence data collected by population-based cancer registries. In 2002, CDC began annually publishing United States Cancer Statistics (USCS). The latest USCS report published in 2005 provided cancer statistics for 93% of the United States population from all cancer registries whose data met national data standards. Prior to the publication of USCS, at the national level, cancer incidence data were available for only 14% of the population of the United States.

With this expanded coverage of the U.S. population, it will now be possible



Centers for Disease Control
and Prevention (CDC)
Atlanta GA 30341-3724

May 22, 2006

Ms. Achau
15 Elm Street
Florham Park, New Jersey, 07932

Dear Ms. Achau,

Thank you for your comments concerning the CDC [60] Day Federal Register Notice for [0920-0469] the National Cancer Program Registries: Cancer Surveillance System. We have given the concerns you described careful consideration. For further information regarding the unique mission of CDC, please refer to our website at www.cdc.gov.

Thank you for your continued interest in CDC.

Sincerely,

A handwritten signature in cursive script, appearing to read "H. K. Weir".

Dr H. K. Weir, PhD
Division of Cancer Prevention and Control
National Center for Chronic Disease
Prevention and Health Promotion
Centers for Disease Control and Prevention

Attachment 9

Participants in Consultation Outside the Agency

**Development of Databases of Cancer
Incidence Data
National Program of Cancer
Registries
The Crowne Plaza Hotel
Atlanta, GA
August 12, 1998
10:00 am - 4:00 pm**

Attendees

Stacey Carson, ART, CTR
Program Director
Idaho Hospital Association
Cancer Data Registry of Idaho
PO Box 1278
Boise, ID 83701-1278
(208) 338-5100
Fax (208) 338-7800

Brenda K. Edwards, PhD
Assoc Dir, Cancer Control Research
Program
National Cancer Institute
Executive Plaza North, Rm. 343
6130 Executive Blvd., MSC 7350
Bethesda, MD 20892-73350
(301) 496-8506

Irene Hall, PhD
Section Chief, Cancer Surveillance
Branch
Division of Cancer Prevention and
Control
Centers for Disease Control and
Prevention
4770 Buford Highway, NE (K53)
Atlanta, Ga 30341-3724
(770) 488-4783
Fax (770) 488-4759

Holly Howe, PhD
Chief, Division of Epidemiologic Studies
Illinois Department of Public Health
605 West Jefferson Street
Springfield, IL 62761
(217) 787-7118
Fax (217) 524-1770

Sue Min Lai, PhD, MS, MBA
Director, Kansas Cancer Registry
University of Kansas Medical Center
3901 Rainbow Blvd
Kansas City, KS 66160-7313
(913) 588-2744
Fax (913) 588-2780

Daniel Miller, MD
Chief, Cancer Surveillance Branch
Division of Cancer Prevention and
Control
Centers for Disease Control and
Prevention
4770 Buford Highway, NE (K53)
Atlanta, Ga 30341-3724
(770) 488-4783
Fax (770) 488-4759

Karl Musgrave, DVM, MPH
Contact Person
Wyoming Department of Health
2300 Capitol Avenue
Hathaway Building, Room 417
Cheyenne, WY 82002
(307) 777-7958
Fax (307) 777-5402

Thomas C. Tucker, MPH
Acting Associate Director
Markey Cancer Center
312 Davis-Mills Building
800 Rose Street
Lexington, KY 40536-0098
(606) 257-4582
Fax (606) 323-1902

Hannah Weir, PhD
Epidemiologist
4770 Buford Highway, NE (K53)
Atlanta, Ga 30341-3724
(770) 488-4783
Fax (770) 488-4759

Phyllis Wingo, PhD
Director, Surveillance Resesarch
American Cancer Society
1599 Clifton Road
Atlanta, Ga 30329

Attachment 10

308(d) Assurance of Confidentiality Certificate Approval



Memorandum

Date June 7, 2000

From Director
Management Analysis and Services Office (E11)

Subject Authorization to Assure Confidentiality for "National Program of Cancer Registries -
Cancer Surveillance System"

To James S. Marks, M.D., M.P.H.
Director, National Center for Chronic Disease
Prevention and Health Promotion (K40)

This memo is to provide formal approval of your request to assure confidentiality under Section 308(d) of the Public Health Service (PHS) Act for the project "National Program of Cancer Registries - Cancer Surveillance System." The expiration date for this authority is May 31, 2005. Please use 42 USC 242(k), and 42 USC 242(m) as the legal references for information collection and protection.

If you have any questions, please contact Betsey Dunaway, CDC Confidentiality Officer, at (404) 639-2942.


Carolyn J. Russell

cc:
Missy Jamison, NCCDPHP (K53)

Attachment 11

Institutional Review Board - Approval Notification

Weir, Hannah (CDC/CCHP/NCCDPHP)

From: McCleary, Jennifer (CDC/OD/OC SO)
Sent: Thursday, October 12, 2006 12:47 PM
To: Weir, Hannah (CDC/CCHP/NCCDPHP)
Cc: Redmond-Leonard, Joan A. (CDC/CCHP/NCCDPHP)
Subject: 2594: IRB Approval of Continuation of Protocol (Expedited)

DATE: 10/12/2006

FROM: IRB Administrator
Human Research Protection Office
Office of Scientific Regulatory Services
Office of the Chief Science Officer, OD/CDC

SUBJECT: IRB Approval of Continuation of Protocol #2594, "National Program of Cancer Registries - Cancer Surveillance System (NPCR-CSS)" (Expedited)

TO: Hannah Weir [HBW4]
NCCDPHP/DCPC

CDC's IRB "C" has reviewed and approved your request to continue protocol #2594 for the maximum allowable period of one year and it will expire on 10/20/2007. The protocol was reviewed in accordance with the expedited review process outlined in 45 CFR 46.110(b)(1), Category 5. It is noted that the study does not involve contact with subjects and study activities involve only data analysis or report writing.

If other institutions involved in this protocol are being awarded CDC funds through the CDC Procurement and Grants Office (PGO), you are required to send a copy of this IRB approval to the CDC PGO award specialist handling the award. You are also required to verify with the award specialist that the awardee has provided PGO with the required documentation and has approval to begin or continue research involving human subjects as described in this protocol.

As a reminder, the IRB must review and approve all human subjects research protocols at intervals appropriate to the degree of risk, but not less than once per year. There is no grace period beyond one year from the last IRB approval date. It is ultimately your responsibility to submit your research protocol for continuation review and approval by the IRB. Please keep this approval in your protocol file as proof of IRB approval and as a reminder of the expiration date. To avoid lapses in approval of your research and the possible suspension of subject enrollment and/or termination of the protocol, please submit your continuation request at least six weeks before the protocol's expiration date of 10/20/2007.

Any problems of a serious nature should be brought to the immediate attention of the IRB, and any proposed changes to the protocol should be submitted as an amendment to the protocol for IRB approval before they are implemented.

If you have any questions, please contact the Human Research Protection Office at (404) 639-4721 or e-mail: huma@cdc.gov.

Jennifer McCleary

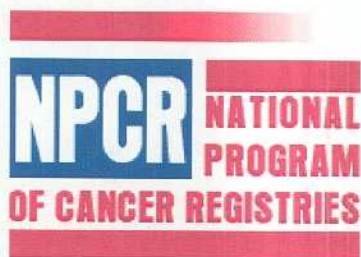
cc:
Joan Redmond-Leonard

Attachment 12

Web pages containing OMB burden statement

Pending approval, the following changes will be made to the NPCR-CSS log in page:

- 1) List the new address for the Reports Clearance Officer as MS D-74.
- 2) Update the expiration date f



Cancer Surveillance System

Form approved
OMB No.0920-0469
Expiration date: March 31, 2006

Public reporting burden of this collection of information is estimated to average 2 hours per response, including the time for reviewing instructions, searching existing data sources, gathering and maintain the data needed, and completing and reviewing the collection of information. An agency may not conduct or sponsor, and a person is not required to respond to a collection of information unless it displays a currently valid OMB control number. Send comments regarding this burden estimate or any other aspect of this collection of information, including suggestions for reducing this burden to CDC/ATSDR Reports Clearance Officer, 1660 Clifton Road NE, MS D-24, Atlanta, Georgia 30333; ATTN: PRA (0920-0469).

Login

User ID:

Password:

Please visit the [NPCR-CSS Utilities Page](#) for the most recent Submission Packet and additional applications, such as GenEDITs Lite and the Inter-record EDITs Standalone Utility.

Forget your user ID or password?

Please call the NPCR-CSS Helpline (301) 572-0502 between 8AM and 4:30PM ET Monday through Friday except holidays. Passwords cannot be sent via email.

Attachment 13

Cases Reported to CDC in Year 2005 Submission

National Program of Cancer Registries – Cancer Surveillance System
Number of invasive and in situ cases reported from the year 2005 Submission

Grantees	Reference Year	Case Counts by Diagnosis Year							
		1995	1996	1997	1998	1999	2000	2001	2002
AK	1996	0	1755	1922	2018	2058	2155	2266	2103
AL	1996	0	18480	18264	19418	20258	20798	21929	22164
AR	1997	0	0	12192	12727	13097	13334	13693	13232
AZ	1995	19274	20464	21250	22393	22330	22929	24013	23076
CA	1995	134143	137175	140332	143789	147407	147823	151774	150474
CO	1995	15203	15766	16130	16650	17150	17933	18755	18666
DC	1996	0	0	3055	3190	3130	3136	3101	2927
DE	1996	0	0	4038	4022	4163	4323	4513	4446
FL	1995	91020	92746	96530	99327	101122	102041	103732	100690
GA	1995	26409	25678	29067	29489	31549	34497	36248	36772
ID	1995	4896	4966	5274	5450	5506	6018	5975	6264
IL	1995	57271	58503	58969	60298	61292	61705	63221	63573
IN	1995	25301	25806	26575	28273	28793	29975	31028	30574
KS	1996	10575	12023	12824	12904	13254	13268	13185	13041
KY	1995	19750	20273	20735	21284	21935	22526	22950	22563
LA	1995	19250	19502	20343	20891	20958	21257	22270	21997
MA	1995	31917	32526	34222	35808	36090	36657	37461	37892
MD	1996	0	26108	25986	26806	26465	26863	26218	27187
ME	1995	6608	6859	7257	7402	7455	7874	8229	8221
MI	1995	48328	48857	50332	51491	52985	53428	54051	53869
MN	1995	21174	21170	22154	22737	23575	24459	25391	25471
MO	1996	0	28515	28394	27766	28494	28308	28799	28550
MS	1996	0	0	0	0	0	0	0	10521
MT	1995	4174	4289	4462	4676	4672	4894	5045	4932
NC	1995	31140	30681	32231	33198	34526	33299	36552	35536
ND	1997	0	0	3191	3105	3267	3184	3219	3313
NE	1995	8011	8115	8438	8595	8808	8934	8858	8861
NH	1995	5344	5457	5949	5902	6175	6492	6903	7119
NJ	1995	44980	45759	47492	48319	48146	48903	51146	51153
NV	1995	6731	6884	6773	7210	7694	9996	10134	10427
NY	1996	0	93652	96305	98900	99752	101710	101711	100286
OH	1996	0	52788	56140	58144	60135	59012	60207	58894
OK	1997	0	0	16116	16414	16535	16643	17051	17488
OR	1996	0	15917	16762	17619	18861	18611	18982	18726
PA	1995	70477	71154	72737	74030	74575	74803	77973	77203
PR	1998	0	0	0	9659	10427	10245	9594	5764
PW	1999	0	0	0	0	16	17	24	20
RI	1995	5926	6178	6210	6180	6469	6560	6498	6509
SC	1996	0	17097	18642	18725	19863	19825	20479	21209
SD	2000	0	0	0	0	0	0	3755	4065
TN	1999	0	0	0	0	22708	23653	23639	23312
TX	1995	71139	72623	75137	76424	78312	79262	83385	82353
VA	1996	0	27252	27372	28969	30191	31098	30305	30576
VT	1996	0	2930	3175	3135	3387	3324	3408	3368
WA	1995	26023	26920	28151	29334	30138	30297	31432	31421
WI	1995	25239	25574	26526	27643	27217	26824	27572	27109

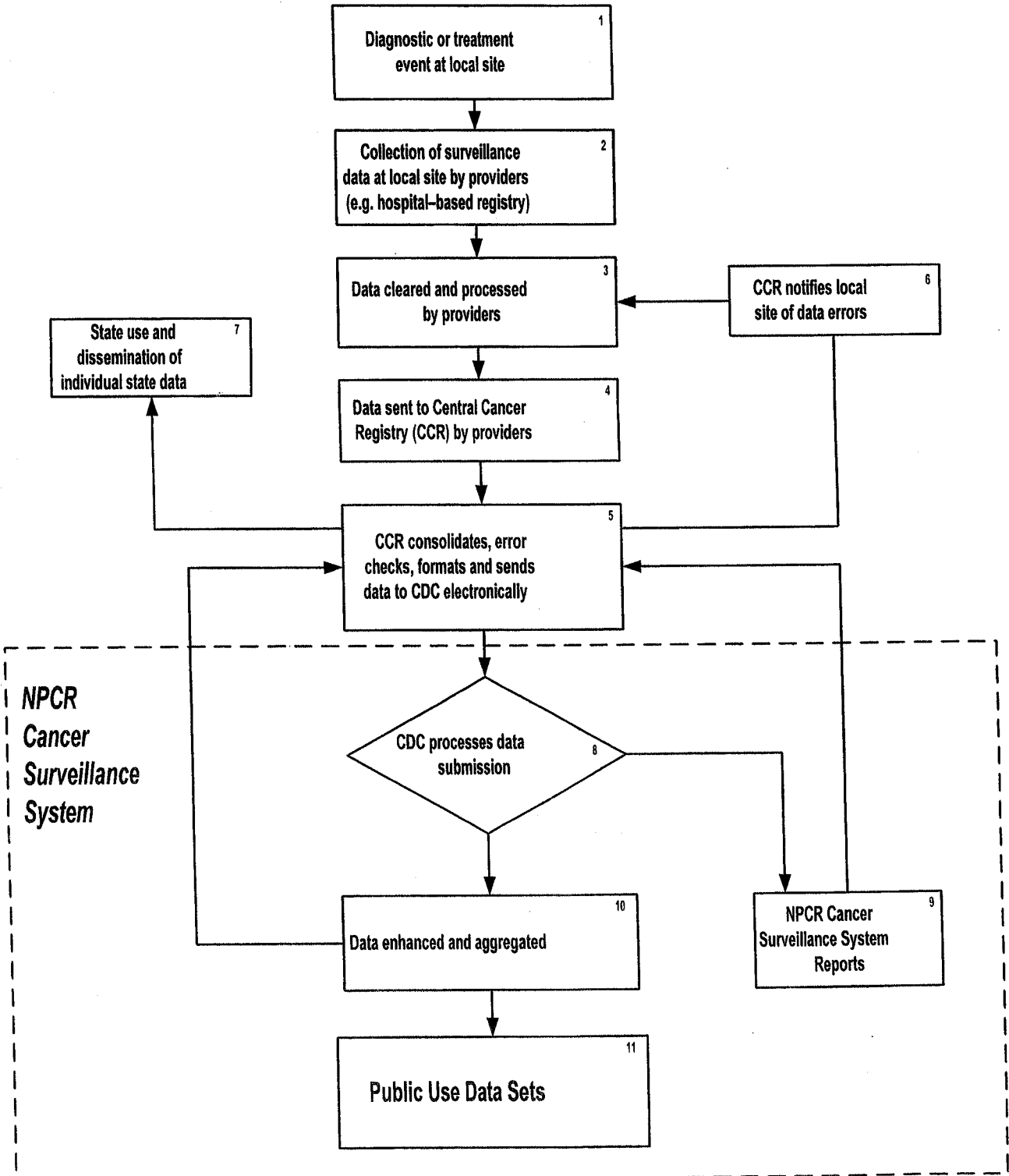
WV	1995	9814	9994	10704	10715	10908	10867	11233	10847
WY	1996	0	2099	2123	2163	2323	2323	2303	2323
Total	NA	840117	1142535	1220481	1263192	1314171	1332083	1370210	1367087

Attachment 14

Flow Chart of Data Reporting for NPCR-CSS

National Program of Cancer Registries (NPCR) Cancer Surveillance System

Data Collection and Processing Flow Chart



Attachment 15
NPCR-CSS Data Evaluation Reports

Data Evaluation Reports - Kentucky

Table of Contents

2005 - Standard Status Report (SSR1)	SSR1: 1
Report on Quality, Completeness and Timeliness	SSR1: 2
2005 CSS Submission Average with Range	SSR1: 3
Estimated Completeness - 2003	SSR1: 4-6
Estimated Completeness - 2002	SSR1: 7-9
Estimated Completeness - 2001	SSR1: 10-12
Estimated Completeness - 2000	SSR1: 13-15
Estimated Completeness - 1999	SSR1: 16-18
Estimated Completeness - 1998	SSR1: 19-21
2005 - Submission Summary Report (SSR2)	SSR2: 1
Table 1: Submission Summary	SSR2: 2
Table 2a: Number and Percentage Core Single and Inter-field Errors	SSR2: 3
Table 2b: Number and Percentage Advanced Single and Inter-field Errors	SSR2: 4
Table 2c: Inter-Record Core and Advanced Edit Errors by Error Type Among Individuals with Multiple Primaries	SSR2: 5
Table 3: Percentage of Over-Ride Flagged Fields -- Grouped by Edit Name and Diagnosis Year	SSR2: 6
Table 4: Average Percentage of Over-Ride Flags for All 2005 NPCR Data Submissions	SSR2: 7
2005 - Data Quality Indicator Report (DQI)	DQI: 1
Table 1: Core Cancer Surveillance Data	DQI: 2-3
Table 2: Advanced Cancer Surveillance Data	DQI: 4-5

Department of Health and Human Services
Centers for Disease Control and Prevention
Safer · Healthier · People

NPCR-CSS Data Evaluation Report 2005 (DER 2005)

The National Program of Cancer Registries (NPCR) provides funds to state and territorial health departments to improve or enhance existing cancer registries; plan for and implement registries where they did not exist; develop model legislation and regulations for states and territories to enhance the viability of registry operations; set standards for data completeness, timeliness, and quality; provide training for registry personnel; and help establish a computerized reporting and data-processing system.

NPCR's goals are to rapidly establish and standardize the reporting of cancer within and among the states in order to build state and national capacity to do the following: monitor the cancer burden; identify cancer incidence variation for racial and ethnic populations and for regions within a state, between states, and between regions; provide data for research; provide guidance for health resource allocation; respond to public concern and inquiries about cancer; improve planning for future health care needs; and evaluate cancer prevention and control activities.

In 2000, CDC established the NPCR-Cancer Surveillance System (NPCR-CSS) to receive, evaluate, and disseminate data from registries participating in NPCR. The NPCR-CSS is designed to provide cancer incidence data to meet CDC's public health surveillance responsibilities and to help monitor progress toward NPCR goals. Beginning January 2001, registries annually report their incidence data to CDC from their NPCR reference year forward. The "NPCR reference year" is the first diagnosis year for which a state or territorial cancer registry collected data with the assistance of NPCR funds.

Following each data submission, registries receive a NPCR- CSS Data Evaluation Report detailing the completeness, accuracy and timeliness of their data submission, as demonstrated by meeting the following 5 data quality criteria for each diagnosis year for all cancer sites combined:

- **Percent Completeness Adjusted for Duplicates:** The percentage of observed to expected, unduplicated cases where the expected cases are estimated by using methods developed by the North American Association of Central Cancer Registries (NAACCR) (<http://www.naacr.org/>). DER 2005 case completeness evaluation is based on NAACCR method version 2.2.
- **Unresolved Duplicate Rate:** Because some cancer patients receive diagnostic or treatment services at more than one reporting facility, cancer registries perform a procedure to identify and resolve duplicate case reporting to ensure that each cancer case is counted only once. Prior to the submission of data to NPCR-CSS, each registry performs a protocol developed by NAACCR for assessing duplicate cases. This information is reported to CDC at the time of the data submission.
- **Percent Death Certificate Only Cases:** Another measure of the completeness of case ascertainment is the proportion of cases ascertained solely on the basis of a death certificate, with no other information on the case available after the registry has completed a routine procedure known as "death clearance and follow back".
- **Percent Missing Critical Data Elements (Age, Sex, Race and County):** The proportion of cases missing information deemed critical for the reporting of population-based cancer incidence data.

NPCR-CSS Data Evaluation Report 2005 (DER 2005)

- Percent Passing Edits: Edits test the validity and logic of data components. Edits are applied to single field variables, inter-field variables and to multiple records (each record denotes a case of cancer in a patient) in those instances when a patient has multiple cancer diagnoses. There are two types of edits: core edits that are applied to variables deemed necessary for reporting incidence data; and advanced edits that are applied to variables used for advanced surveillance activities such as survival analyses. At this time, it should be noted that there are no standards for advanced or inter-record edits.

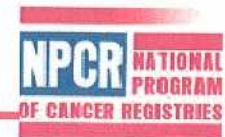
How the Data Evaluation Reports are used: The Data Evaluation Reports are used to identify cancer registries whose incidence data meet data standards established by NPCR. The NPCR 12 and 24 month standards are applied to data for diagnoses made 12 and 24 months past the close of the diagnosis years being evaluated. For example, for data submitted in January 2005, the NPCR 12 and 24 month standards will be applied to diagnosis years 2003 and 2002, respectively. The USCS standard is a subset of the NPCR 24 month standard. This standard is used to identify registries whose incidence data meet the eligibility criteria for inclusion in the United States Cancer Statistics report (<http://apps.nccd.cdc.gov/uscs/>) published jointly with the National Cancer Institute's Surveillance Epidemiology and End Results (SEER) Program and in collaboration with NAACCR. In establishing these standards, CDC recognizes that it may take up to two years before a registry's incidence data are complete (i.e., all the information on a cancer patient has been reported to and processed by the cancer registry).

When reviewing the Report on Quality, Completeness and Timeliness of Data table, the criteria for each standard (NPCR 24 month, NPCR 12 month and USCS) are highlighted by a color. When all 5 data quality criteria are met, the row corresponding to the diagnosis year will be highlighted. Only those diagnosis years in which all 5 data quality criteria were met will be included in the USCS report. CDC expects that all registries should achieve these standards and be included in the report.



2005 - Standard Status Report (SSR1) National Program of Cancer Registries Cancer Surveillance System

Kentucky



Department of Health and Human Services
Centers for Disease Control and Prevention
Safer • Healthier • People

**National Program of Cancer Registries - Cancer Surveillance System
SSR1 - Standard Status Report - 2005**

Kentucky - 2005

Report on Quality, Completeness and Timeliness of Data*

NPCR Standards Grouping	Diagnosis Year**	Percent Completeness Adjusted for Duplicates*	Unresolved Duplicates Rate (per 1,000)	Percent Death Certificate Only Cases	Percent Missing or Unknown Core Data Elements				Percent Passing Core Single and Inter-field Edits
					Age	Sex	Race	County	
12 Months	2003	86.47	0.00	NDC	0.00	0.00	2.31	0.00	98.45
24+ Months	2002	97.59	0.13	0.80	0.00	0.00	1.27	0.00	100.00
	2001	101.46	0.00	0.76	0.00	0.00	0.99	0.00	100.00
	2000	103.18	0.00	0.92	0.00	0.00	0.65	0.00	100.00
	1999	101.49	0.00	1.56	0.00	0.00	0.91	0.00	100.00
	1998	99.93	0.00	1.66	0.00	0.00	0.93	0.00	100.00
STANDARD									
NPCR 12 Month Standard		90.00	N/A	N/A	N/A	N/A	N/A	N/A	97.00
NPCR 24 Month Standard		95.00	<=1	<=3	<=2	<=2	<=3	<=2	99.00
USCS Publication Standard		90.00	N/A	<=5	<=3	<=3	<=5	N/A	97.00
Measurement Error***		-1.0	-0.4	-0.4	-0.4	-0.4	-0.4	-0.4	N/A

NDC: Death Clearance Not Done.

N/A: Not Applicable

* See the Introduction section of this report for a description of the data quality criteria and evaluation methods.

** Highlighted rows denote the diagnosis years for which data met program and/or publication standards.

Colors correspond to the data standard met. Diagnosis years that did not meet program and/or publication standards are not highlighted.

Publication standards are applied to 24 + month data. Data meeting the 24-month standard automatically meet the publication standards.

*** The measurement error is the error allowance for determining if data elements have met the standard.

**National Program of Cancer Registries - Cancer Surveillance System
SSR1 - Standard Status Report - 2005**

CSS Submission Average with Range

Report on Quality, Completeness and Timeliness of Data -- 2005 CSS Submission Average with Range

NPCR Standards Grouping	Diagnosis Year	Statistic	Percent Completeness Adjusted for Duplicates	Unresolved Duplicates Rate (per 1,000)	Percent Death Certificate Only Cases	Percent Missing or Unknown Core Data Elements				Percent Passing Core Single and Inter-field Edits
						Age	Sex	Race	County	
12 Months	2003	Average Range	70.56 2.37-104.03	0.00 0.00-0.00	1.36 0.00-9.09	0.01 0.00-0.11	0.04 0.00-0.41	2.80 0.00-12.67	0.54 0.00-6.29	99.72 96.55-100.00
24+ Months	2002	Average Range	96.43 71.65-107.75	0.32 0.00-2.07	1.73 0.00-4.92	0.01 0.00-0.06	0.01 0.00-0.22	1.30 0.00-3.68	0.30 0.00-7.09	99.98 99.49-100.00
	2001	Average Range	97.91 79.21-106.37	0.64 0.00-14.67	2.13 0.00-11.05	0.01 0.00-0.10	0.01 0.00-0.06	1.12 0.00-3.09	0.12 0.00-1.22	99.99 99.80-100.00
	2000	Average Range	97.85 81.96-106.26	0.64 0.00-14.67	1.77 0.00-8.78	0.01 0.00-0.07	0.00 0.00-0.05	0.96 0.00-2.75	0.13 0.00-1.64	99.99 99.84-100.00
	1999	Average Range	96.88 79.15-110.05	0.64 0.00-14.67	2.01 0.00-9.00	0.01 0.00-0.08	0.00 0.00-0.02	0.88 0.00-2.61	0.11 0.00-1.32	99.99 99.71-100.00
	1998	Average Range	96.57 86.45-106.85	0.63 0.00-14.67	2.25 0.02-9.30	0.01 0.00-0.13	0.00 0.00-0.03	0.79 0.00-2.40	0.08 0.00-0.60	99.99 99.54-100.00
STANDARD										
NPCR 12 Month Standard			90.00	N/A	N/A	N/A	N/A	N/A	N/A	97.00
NPCR 24 Month Standard			95.00	<=1	<=3	<=2	<=2	<=3	<=2	99.00
USCS Publication Standard			90.00	N/A	<=5	<=3	<=3	<=5	N/A	97.00
Measurement Error*			-1.0	-0.4	-0.4	-0.4	-0.4	-0.4	-0.4	N/A

The average is an unweighted average based on NPCR Programs submitting data.

N/A: Not Applicable.

* The measurement error is the error allowance for determining if data elements have met the standard.

**National Program of Cancer Registries-Cancer Surveillance System
SSR1 - Standard Status Report - 2005**

**Estimated Completeness of Case Ascertainment for Blacks
Kentucky - 2003**

Black Males	Kentucky			SEER (11 Regs) and US Mortality		Initial Results		Mortality Adjustment Terms			Adjusted for Mortality	
	Age-Adjusted Rates (2000 US)			Age-Adjusted Rates (2000 US)		Expected Incidence Rate	Initial Percent Complete	Registry 1998-2002 Mort Rate	Adj. Term	Adj Reg 2000 Mort Rate	Expected Incidence Rate	Interim Percent Complete
	2003	2001-2002	Inc/Mort Ratio	1998-2002 Mortality	Inc/Mort Ratio							
Cancer Site	Incidence	Mortality	Ratio	Mortality	Ratio	Rate	Complete	Mort Rate	Term	Mort Rate	Rate	Complete
Oral Cavity and Pharynx	18.46	6.59	2.80	7.15	2.68	17.66	104.48	7.76	0.92	6.49	17.39	106.15
Esophagus	6.86	13.31	0.52	11.40	0.91	12.15	56.41	11.90	0.96	13.20	12.05	56.89
Stomach	8.90	11.76	0.76	12.76	1.39	16.36	54.41	8.58	1.49	12.91	17.95	49.59
Colon and Rectum	82.99	36.48	2.27	33.76	2.14	77.94	106.48	38.37	0.88	35.61	76.07	109.10
Liver	7.81	5.25	1.49	8.30	1.33	7.00	111.59	7.18	1.16	5.41	7.22	108.22
Pancreas	20.85	16.82	1.24	15.69	1.03	17.36	120.10	17.60	0.89	16.45	16.98	122.77
Lung and Bronchus	115.41	125.80	0.92	101.54	1.12	141.37	81.64	130.48	0.78	120.22	135.09	85.43
Melanoma of the Skin												
Prostate												
Urinary Bladder	17.94	6.60	2.72	5.42	3.65	24.09	74.49	6.31	0.86	6.42	23.41	76.65
Kidney and Renal Pelvis	16.54	5.32	3.11	6.28	3.15	16.78	98.58	7.34	0.85	5.17	16.29	101.54
Brain and Other Nervous System	7.58	1.77	4.29	3.23	1.41	2.48	305.52	2.90	1.11	1.80	2.54	298.83
Hodgkin's Disease	1.91	1.28	1.49	0.53	5.41	6.93	27.56	0.54	0.99	1.28	6.91	27.63
Non-Hodgkin's Lymphomas	13.39	12.44	1.08	7.18	2.47	30.74	43.56	10.74	0.67	11.61	28.70	46.66
Multiple Myeloma	12.01	9.37	1.28	8.85	1.49	13.97	85.97	8.62	1.03	9.42	14.04	85.52
Leukemias	4.88	10.71	0.46	8.90	1.39	14.92	32.69	11.61	0.77	10.21	14.23	34.29
Sum of Rates for Black Males	335.54					399.76	83.93				388.88	86.28

Black Females	Kentucky			SEER (11 Regs) and US Mortality		Initial Results		Mortality Adjustment Terms			Adjusted for Mortality	
	Age-Adjusted Rates (2000 US)			Age-Adjusted Rates (2000 US)		Expected Incidence Rate	Initial Percent Complete	Registry 1998-2002 Mort Rate	Adj. Term	Adj Reg 2000 Mort Rate	Expected Incidence Rate	Interim Percent Complete
	2003	2001-2002	Inc/Mort Ratio	1998-2002 Mortality	Inc/Mort Ratio							
Cancer Site	Incidence	Mortality	Ratio	Mortality	Ratio	Rate	Complete	Mort Rate	Term	Mort Rate	Rate	Complete
Oral Cavity and Pharynx	4.68	2.34	1.99	1.90	3.20	7.49	62.42	2.99	0.64	2.17	6.95	67.32
Esophagus	4.52	2.76	1.64	3.16	1.15	3.17	142.62	2.34	1.35	2.95	3.39	133.27
Stomach	6.45	3.87	1.67	6.17	1.55	6.01	107.42	4.78	1.29	4.09	6.36	101.53
Colon and Rectum	65.59	33.82	1.94	24.23	2.33	78.79	83.24	29.64	0.82	32.59	75.91	86.40
Liver	2.18	1.09	2.00	3.08	1.11	1.21	180.11	3.28	0.94	1.08	1.20	182.37
Pancreas	11.54	11.54	1.00	12.59	1.08	12.52	92.18	12.94	0.97	11.48	12.45	92.68
Lung and Bronchus	79.06	56.26	1.41	39.40	1.39	78.44	100.79	59.17	0.67	52.50	73.20	108.01
Melanoma of the Skin												
Breast	120.74	37.24	3.24	34.63	3.45	128.53	93.94	36.81	0.94	36.79	127.00	95.07
Cervix	16.51	4.88	3.38	5.25	2.10	10.27	160.76	4.92	1.07	4.95	10.40	158.64
Corpus and Uterus, NOS	22.54	4.85	4.64	6.94	2.72	13.19	170.94	5.99	1.16	5.01	13.61	165.67
Ovary	7.37	5.60	1.31	7.36	1.34	7.52	97.94	7.64	0.96	5.56	7.47	98.66
Urinary Bladder	11.33	3.44	3.29	2.89	2.66	9.14	124.00	2.92	0.99	3.43	9.11	124.33
Kidney and Renal Pelvis	10.10	4.48	2.26	2.72	3.52	15.75	64.12	3.46	0.79	4.29	15.08	66.96
Brain and Other Nervous System	5.26	4.02	1.31	2.22	1.55	6.21	84.61	3.51	0.63	3.72	5.76	91.32
Hodgkin's Disease	1.69	0.80	2.10	0.33	6.58	5.28	31.96	0.33	0.99	0.80	5.27	32.00
Non-Hodgkin's Lymphomas	6.31	3.68	1.72	4.45	2.63	9.66	65.34	3.88	1.15	3.78	9.94	63.47
Multiple Myeloma	7.37	5.71	1.29	6.51	1.48	8.46	87.12	6.25	1.04	5.76	8.53	86.40
Leukemias	8.85	5.05	1.75	5.38	1.45	7.29	121.30	5.09	1.06	5.10	7.38	119.92
Sum of Rates for Black Females	392.06					408.91	95.88				399.00	98.26

Sum of Rates for Blacks	364.39					404.43	90.10				394.04	92.40
--------------------------------	---------------	--	--	--	--	---------------	--------------	--	--	--	---------------	--------------

**National Program of Cancer Registries-Cancer Surveillance System
SSR1 - Standard Status Report - 2005**

**Estimated Completeness of Case Ascertainment for Whites
Kentucky - 2003**

White Males	Kentucky			SEER (11 Regs) and US Mortality		Initial Results		Mortality Adjustment Terms			Adjusted for Mortality	
	Age-Adjusted Rates (2000 US)			Age-Adjusted Rates (2000 US)		Expected	Initial	Registry	Adj Reg	Expected	Interim	
	2003	2001-2002	Inc/Mort	1998-2002	Inc/Mort	Incidence	Percent	1998-2002	Term			2000
Cancer Site	Incidence	Mortality	Ratio	Mortality	Ratio	Rate	Complete	Mort Rate		Mort Rate	Rate	Complete
Oral Cavity and Pharynx	15.67	4.63	3.39	3.87	3.99	18.47	84.81	4.94	0.78	4.43	17.68	88.64
Esophagus	8.51	8.46	1.01	7.49	1.03	8.70	97.78	7.86	0.95	8.38	8.62	98.70
Stomach	6.99	5.16	1.35	5.60	1.91	9.83	71.09	5.32	1.05	5.22	9.94	70.35
Colon and Rectum	61.96	27.79	2.23	24.25	2.54	70.68	87.65	28.21	0.86	27.02	68.70	90.18
Liver	4.86	5.22	0.93	5.04	1.27	6.61	73.43	5.04	1.00	5.22	6.61	73.41
Pancreas	10.48	11.18	0.94	11.96	1.04	11.67	89.83	11.63	1.03	11.24	11.73	89.32
Lung and Bronchus	112.10	116.79	0.96	75.24	1.02	119.08	94.13	113.62	0.66	108.90	111.04	100.95
Melanoma of the Skin	16.93	5.47	3.10	4.35	5.98	32.67	51.82	4.94	0.88	5.34	31.90	53.07
Prostate												
Urinary Bladder	34.39	7.52	4.57	7.89	5.02	37.77	91.06	8.19	0.96	7.47	37.50	91.72
Kidney and Renal Pelvis	19.65	7.13	2.75	6.19	2.69	19.18	102.46	6.94	0.89	6.98	18.77	104.73
Brain and Other Nervous System	6.49	6.38	1.02	5.94	1.42	9.06	71.62	6.22	0.95	6.32	8.97	72.28
Hodgkin's Disease	2.66	0.93	2.85	0.60	5.37	5.02	53.08	0.67	0.90	0.92	4.92	54.19
Non-Hodgkin's Lymphomas	17.14	10.00	1.71	10.57	2.31	23.13	74.13	10.76	0.98	9.97	23.05	74.38
Multiple Myeloma	4.28	5.13	0.83	4.38	1.51	7.76	55.13	5.11	0.86	4.98	7.53	56.76
Leukemias	10.64	11.35	0.94	10.38	1.62	18.40	57.81	10.66	0.97	11.29	18.30	58.12
Sum of Rates for White Males	332.73					398.03	83.60				385.25	86.37

White Females	Kentucky			SEER (11 Regs) and US Mortality		Initial Results		Mortality Adjustment Terms			Adjusted for Mortality	
	Age-Adjusted Rates (2000 US)			Age-Adjusted Rates (2000 US)		Expected	Initial	Registry	Adj Reg	Expected	Interim	
	2003	2001-2002	Inc/Mort	1998-2002	Inc/Mort	Incidence	Percent	1998-2002	Term			2000
Cancer Site	Incidence	Mortality	Ratio	Mortality	Ratio	Rate	Complete	Mort Rate		Mort Rate	Rate	Complete
Oral Cavity and Pharynx	4.93	1.51	3.26	1.56	4.12	6.22	79.26	1.57	0.99	1.51	6.21	79.37
Esophagus	1.70	1.36	1.25	1.66	1.16	1.57	108.46	1.43	1.16	1.40	1.62	105.05
Stomach	3.19	2.21	1.44	2.78	1.83	4.04	78.92	2.57	1.08	2.25	4.11	77.63
Colon and Rectum	48.18	19.30	2.50	16.87	2.70	52.05	92.56	18.94	0.89	18.88	50.91	94.64
Liver	1.57	2.26	0.69	1.87	1.23	2.79	56.33	2.13	0.88	2.20	2.72	57.72
Pancreas	7.99	8.97	0.89	8.96	1.06	9.53	83.80	8.51	1.05	9.07	9.64	82.91
Lung and Bronchus	66.72	55.92	1.19	41.62	1.22	68.33	97.64	53.56	0.78	53.42	65.29	102.20
Melanoma of the Skin	11.90	2.35	5.07	1.99	8.66	20.33	58.54	2.10	0.95	2.32	20.12	59.15
Breast	111.91	26.94	4.15	25.89	5.45	146.92	76.17	26.51	0.98	26.81	146.24	76.52
Cervix	7.53	2.55	2.95	2.50	3.53	9.00	83.64	3.08	0.81	2.45	8.66	86.90
Corpus and Uterus, NOS	20.87	3.20	6.53	3.87	6.64	21.25	98.22	3.45	1.12	3.28	21.78	95.84
Ovary	10.40	9.43	1.10	9.16	1.61	15.15	68.68	8.68	1.06	9.53	15.32	67.92
Urinary Bladder	9.41	2.32	4.06	2.24	4.35	10.09	93.31	2.48	0.90	2.27	9.89	95.16
Kidney and Renal Pelvis	11.36	3.42	3.33	2.81	2.94	10.06	113.00	3.25	0.86	3.32	9.78	116.15
Brain and Other Nervous System	4.67	3.79	1.23	3.96	1.50	5.70	81.91	3.91	1.01	3.81	5.71	81.67
Hodgkin's Disease	2.16	0.39	5.51	0.40	6.54	2.56	84.31	0.38	1.06	0.40	2.60	83.32
Non-Hodgkin's Lymphomas	15.20	6.57	2.31	6.96	2.42	15.90	95.61	7.18	0.97	6.53	15.80	96.20
Multiple Myeloma	3.27	3.08	1.06	2.90	1.42	4.38	74.77	3.12	0.93	3.04	4.32	75.85
Leukemias	8.06	5.60	1.44	5.99	1.66	9.33	86.43	5.56	1.08	5.69	9.47	85.11
Sum of Rates for White Females	351.03					415.19	84.55				410.18	85.58

Sum of Rates for Whites	342.08					406.79	84.09				397.98	85.97
--------------------------------	---------------	--	--	--	--	---------------	--------------	--	--	--	---------------	--------------

**National Program of Cancer Registries-Cancer Surveillance System
SSR1 - Standard Status Report - 2005**

Kentucky - 2003

Estimated Completeness Summary

Interim Completeness Estimates Adjusted for Reference Mortality					
Whites		Blacks		Race Proportional	
Percent Complete	Population	Percent Complete	Population	Percent Complete	Population
85.97	3,721,738	92.40	318,396	86.47	4,040,134

Final Completeness Estimates Adjusted for Reference Mortality and Duplicate Records			
Total Incident Cases	18428	Adjusted Total Incident Cases	18428
Race Proportional Completeness, Adjusted for Reference Mortality	86.47	Expected Incident Cases	21311
%Unresolved Duplicates*	0.00	Final Completeness Estimates, Adjusted for Reference Mortality and Duplicate Records	86.47

* 0.00 indicates all duplicates are resolved.

National Program of Cancer Registries-Cancer Surveillance System
SSR1 - Standard Status Report - 2005

Estimated Completeness of Case Ascertainment for Blacks
Kentucky - 2002

Black Males	Kentucky			SEER (11 Regs) and US Mortality		Initial Results		Mortality Adjustment Terms			Adjusted for Mortality	
	Age-Adjusted Rates (2000 US)			Age-Adjusted Rates (2000 US)		Expected Incidence Rate	Initial Percent Complete	Registry 1998-2002 Mort Rate	Adj. Term	Adj Reg 2000 Mort Rate	Expected Incidence Rate	Interim Percent Complete
	2002 Incidence	2001-2002 Mortality	Inc/Mort Ratio	1998-2002 Mortality	Inc/Mort Ratio							
Cancer Site	Incidence	Mortality	Ratio	Mortality	Ratio	Rate	Complete	Mort Rate	Term	Mort Rate	Rate	Complete
Oral Cavity and Pharynx	18.04	6.59	2.74	7.15	2.68	17.66	102.14	7.76	0.92	6.49	17.39	103.77
Esophagus	15.14	13.31	1.14	11.40	0.91	12.15	124.54	11.90	0.96	13.20	12.05	125.60
Stomach	12.72	11.76	1.08	12.76	1.39	16.36	77.77	8.58	1.49	12.91	17.95	70.87
Colon and Rectum	79.54	36.48	2.18	33.76	2.14	77.94	102.05	38.37	0.88	35.61	76.07	104.56
Liver	10.72	5.25	2.04	8.30	1.33	7.00	153.09	7.18	1.16	5.41	7.22	148.46
Pancreas	16.42	16.82	0.98	15.69	1.03	17.36	94.59	17.60	0.89	16.45	16.98	96.68
Lung and Bronchus	149.33	125.80	1.19	101.54	1.12	141.37	105.64	130.48	0.78	120.22	135.09	110.54
Melanoma of the Skin												
Prostate												
Urinary Bladder	24.45	6.60	3.70	5.42	3.65	24.09	101.51	6.31	0.86	6.42	23.41	104.45
Kidney and Renal Pelvis	20.20	5.32	3.79	6.28	3.15	16.78	120.36	7.34	0.85	5.17	16.29	123.97
Brain and Other Nervous System	6.70	1.77	3.79	3.23	1.41	2.48	269.82	2.90	1.11	1.80	2.54	263.91
Hodgkin's Disease	3.14	1.28	2.45	0.53	5.41	6.93	45.32	0.54	0.99	1.28	6.91	45.42
Non-Hodgkin's Lymphomas	16.09	12.44	1.29	7.18	2.47	30.74	52.34	10.74	0.67	11.61	28.70	56.05
Multiple Myeloma	13.68	9.37	1.46	8.85	1.49	13.97	97.92	8.62	1.03	9.42	14.04	97.40
Leukemias	12.13	10.71	1.13	8.90	1.39	14.92	81.29	11.61	0.77	10.21	14.23	85.28
Sum of Rates for Black Males	398.29					399.76	99.63				388.88	102.42

Black Females	Kentucky			SEER (11 Regs) and US Mortality		Initial Results		Mortality Adjustment Terms			Adjusted for Mortality	
	Age-Adjusted Rates (2000 US)			Age-Adjusted Rates (2000 US)		Expected Incidence Rate	Initial Percent Complete	Registry 1998-2002 Mort Rate	Adj. Term	Adj Reg 2000 Mort Rate	Expected Incidence Rate	Interim Percent Complete
	2002 Incidence	2001-2002 Mortality	Inc/Mort Ratio	1998-2002 Mortality	Inc/Mort Ratio							
Cancer Site	Incidence	Mortality	Ratio	Mortality	Ratio	Rate	Complete	Mort Rate	Term	Mort Rate	Rate	Complete
Oral Cavity and Pharynx	3.37	2.34	1.44	1.90	3.20	7.49	44.99	2.99	0.64	2.17	6.95	48.51
Esophagus	1.49	2.76	0.54	3.16	1.15	3.17	46.94	2.34	1.35	2.95	3.39	43.86
Stomach	6.20	3.87	1.60	6.17	1.55	6.01	103.25	4.78	1.29	4.09	6.36	97.58
Colon and Rectum	70.22	33.82	2.08	24.23	2.33	78.79	89.12	29.64	0.82	32.59	75.91	92.50
Liver	3.65	1.09	3.34	3.08	1.11	1.21	300.94	3.28	0.94	1.08	1.20	304.70
Pancreas	10.22	11.54	0.89	12.59	1.08	12.52	81.63	12.94	0.97	11.48	12.45	82.07
Lung and Bronchus	68.49	56.26	1.22	39.40	1.39	78.44	87.32	59.17	0.67	52.50	73.20	93.57
Melanoma of the Skin												
Breast	128.94	37.24	3.46	34.63	3.45	128.53	100.32	36.81	0.94	36.79	127.00	101.53
Cervix	12.73	4.88	2.61	5.25	2.10	10.27	124.01	4.92	1.07	4.95	10.40	122.37
Corpus and Uterus, NOS	19.54	4.85	4.02	6.94	2.72	13.19	148.15	5.99	1.16	5.01	13.61	143.58
Ovary	11.79	5.60	2.10	7.36	1.34	7.52	156.75	7.64	0.96	5.56	7.47	157.90
Urinary Bladder	9.10	3.44	2.64	2.89	2.66	9.14	99.56	2.92	0.99	3.43	9.11	99.82
Kidney and Renal Pelvis	16.41	4.48	3.67	2.72	3.52	15.75	104.20	3.46	0.79	4.29	15.08	108.83
Brain and Other Nervous System	3.34	4.02	0.83	2.22	1.55	6.21	53.77	3.51	0.63	3.72	5.76	58.04
Hodgkin's Disease	1.13	0.80	1.41	0.33	6.58	5.28	21.45	0.33	0.99	0.80	5.27	21.48
Non-Hodgkin's Lymphomas	11.25	3.68	3.06	4.45	2.63	9.66	116.49	3.88	1.15	3.78	9.94	113.15
Multiple Myeloma	9.45	5.71	1.65	6.51	1.48	8.46	111.71	6.25	1.04	5.76	8.53	110.78
Leukemias	6.63	5.05	1.31	5.38	1.45	7.29	90.89	5.09	1.06	5.10	7.38	89.85
Sum of Rates for Black Females	393.94					408.91	96.34				399.00	98.73

Sum of Rates for Blacks 396.07 404.43 97.93 394.04 100.54

**National Program of Cancer Registries-Cancer Surveillance System
SSR1 - Standard Status Report - 2005**

**Estimated Completeness of Case Ascertainment for Whites
Kentucky - 2002**

White Males	Kentucky			SEER (11 Regs) and US Mortality			Initial Results		Mortality Adjustment Terms			Adjusted for Mortality	
	Age-Adjusted Rates (2000 US)			Age-Adjusted Rates (2000 US)			Expected	Initial	Registry	Adj Reg	Expected	Interim	
	2002	2001-2002	Inc/Mort	1998-2002	Inc/Mort	Ratio	Incidence	Percent	1998-2002	Adjust.			2000
Cancer Site	Incidence	Mortality	Ratio	Mortality	Ratio	Ratio	Rate	Complete	Mort Rate	Term	Mort Rate	Rate	Complete
Oral Cavity and Pharynx	19.01	4.63	4.11	3.87	3.99	18.47	102.92	4.94	0.78	4.43	17.68	107.57	
Esophagus	7.67	8.46	0.91	7.49	1.03	8.70	88.19	7.86	0.95	8.38	8.62	89.02	
Stomach	9.04	5.16	1.75	5.60	1.91	9.83	91.94	5.32	1.05	5.22	9.94	90.98	
Colon and Rectum	67.71	27.79	2.44	24.25	2.54	70.68	95.80	28.21	0.86	27.02	68.70	98.56	
Liver	5.11	5.22	0.98	5.04	1.27	6.61	77.31	5.04	1.00	5.22	6.61	77.29	
Pancreas	11.60	11.18	1.04	11.96	1.04	11.67	99.40	11.63	1.03	11.24	11.73	98.83	
Lung and Bronchus	133.34	116.79	1.14	75.24	1.02	119.08	111.97	113.62	0.66	108.90	111.04	120.08	
Melanoma of the Skin	22.57	5.47	4.13	4.35	5.98	32.67	69.09	4.94	0.88	5.34	31.90	70.76	
Prostate													
Urinary Bladder	38.91	7.52	5.17	7.89	5.02	37.77	103.04	8.19	0.96	7.47	37.50	103.78	
Kidney and Renal Pelvis	19.74	7.13	2.77	6.19	2.69	19.18	102.92	6.94	0.89	6.98	18.77	105.19	
Brain and Other Nervous System	7.06	6.38	1.11	5.94	1.42	9.06	77.93	6.22	0.95	6.32	8.97	78.65	
Hodgkin's Disease	3.33	0.93	3.56	0.60	5.37	5.02	66.31	0.67	0.90	0.92	4.92	67.70	
Non-Hodgkin's Lymphomas	21.73	10.00	2.17	10.57	2.31	23.13	93.98	10.76	0.98	9.97	23.05	94.31	
Multiple Myeloma	7.25	5.13	1.41	4.38	1.51	7.76	93.42	5.11	0.86	4.98	7.53	96.18	
Leukemias	16.09	11.35	1.42	10.38	1.62	18.40	87.46	10.66	0.97	11.29	18.30	87.93	
Sum of Rates for White Males	390.17					398.03	98.03				385.25	101.28	

White Females	Kentucky			SEER (11 Regs) and US Mortality			Initial Results		Mortality Adjustment Terms			Adjusted for Mortality	
	Age-Adjusted Rates (2000 US)			Age-Adjusted Rates (2000 US)			Expected	Initial	Registry	Adj Reg	Expected	Interim	
	2002	2001-2002	Inc/Mort	1998-2002	Inc/Mort	Ratio	Incidence	Percent	1998-2002	Adjust.			2000
Cancer Site	Incidence	Mortality	Ratio	Mortality	Ratio	Ratio	Rate	Complete	Mort Rate	Term	Mort Rate	Rate	Complete
Oral Cavity and Pharynx	5.27	1.51	3.49	1.56	4.12	6.22	84.76	1.57	0.99	1.51	6.21	84.87	
Esophagus	1.44	1.36	1.06	1.66	1.16	1.57	91.56	1.43	1.16	1.40	1.62	88.68	
Stomach	3.35	2.21	1.51	2.78	1.83	4.04	82.72	2.57	1.08	2.25	4.11	81.37	
Colon and Rectum	50.73	19.30	2.63	16.87	2.70	52.05	97.47	18.94	0.89	18.88	50.91	99.65	
Liver	1.78	2.26	0.79	1.87	1.23	2.79	63.83	2.13	0.88	2.20	2.72	65.41	
Pancreas	9.33	8.97	1.04	8.96	1.06	9.53	97.85	8.51	1.05	9.07	9.64	96.81	
Lung and Bronchus	73.61	55.92	1.32	41.62	1.22	68.33	107.72	53.56	0.78	53.42	65.29	112.75	
Melanoma of the Skin	15.72	2.35	6.69	1.99	8.66	20.33	77.31	2.10	0.95	2.32	20.12	78.12	
Breast	120.48	26.94	4.47	25.89	5.45	146.92	82.00	26.51	0.98	26.81	146.24	82.39	
Cervix	10.09	2.55	3.96	2.50	3.53	9.00	112.06	3.08	0.81	2.45	8.66	116.44	
Corpus and Uterus, NOS	22.04	3.20	6.89	3.87	6.64	21.25	103.71	3.45	1.12	3.28	21.78	101.20	
Ovary	12.60	9.43	1.34	9.16	1.61	15.15	83.17	8.68	1.06	9.53	15.32	82.25	
Urinary Bladder	9.15	2.32	3.95	2.24	4.35	10.09	90.76	2.48	0.90	2.27	9.89	92.55	
Kidney and Renal Pelvis	10.02	3.42	2.93	2.81	2.94	10.06	99.68	3.25	0.86	3.32	9.78	102.45	
Brain and Other Nervous System	6.24	3.79	1.64	3.96	1.50	5.70	109.45	3.91	1.01	3.81	5.71	109.14	
Hodgkin's Disease	3.21	0.39	8.18	0.40	6.54	2.56	125.20	0.38	1.06	0.40	2.60	123.73	
Non-Hodgkin's Lymphomas	16.63	6.57	2.53	6.96	2.42	15.90	104.60	7.18	0.97	6.53	15.80	105.24	
Multiple Myeloma	4.25	3.08	1.38	2.90	1.42	4.38	97.08	3.12	0.93	3.04	4.32	98.48	
Leukemias	7.93	5.60	1.41	5.99	1.66	9.33	84.98	5.56	1.08	5.69	9.47	83.68	
Sum of Rates for White Females	383.85					415.19	92.45				410.18	93.58	

Sum of Rates for Whites	386.94					406.79	95.12				397.98	97.35
--------------------------------	---------------	--	--	--	--	---------------	--------------	--	--	--	---------------	--------------

**National Program of Cancer Registries-Cancer Surveillance System
SSR1 - Standard Status Report - 2005**

Kentucky - 2002

Estimated Completeness Summary

Interim Completeness Estimates Adjusted for Reference Mortality					
Whites		Blacks		Race Proportional	
Percent Complete	Population	Percent Complete	Population	Percent Complete	Population
97.35	3,721,738	100.54	318,396	97.60	4,040,134

Final Completeness Estimates Adjusted for Reference Mortality and Duplicate Records			
Total Incident Cases	21074	Adjusted Total Incident Cases	21071
Race Proportional Completeness, Adjusted for Reference Mortality	97.60	Expected Incident Cases	21592
%Unresolved Duplicates*	0.01	Final Completeness Estimates, Adjusted for Reference Mortality and Duplicate Records	97.59

* 0.00 indicates all duplicates are resolved.

**National Program of Cancer Registries-Cancer Surveillance System
SSR1 - Standard Status Report - 2005**

**Estimated Completeness of Case Ascertainment for Blacks
Kentucky - 2001**

Black Males	Kentucky			SEER (11 Regs) and US Mortality		Initial Results		Mortality Adjustment Terms			Adjusted for Mortality	
	Age-Adjusted Rates (2000 US)			Age-Adjusted Rates (2000 US)		Expected	Initial	Registry	Adj Reg	Adj Reg	Expected	Interim
	2001	2000-2001	Inc/Mort	1998-2002	Inc/Mort	Incidence	Percent	1998-2002	Term		2000	Incidence
Cancer Site	Incidence	Mortality	Ratio	Mortality	Ratio	Rate	Complete	Mort Rate		Mort Rate	Rate	Complete
Oral Cavity and Pharynx	14.12	10.38	1.36	7.15	2.68	27.81	50.80	7.76	0.92	10.22	27.37	51.61
Esophagus	19.09	14.32	1.33	11.40	0.91	13.08	145.95	11.90	0.96	14.20	12.97	147.19
Stomach	19.41	9.53	2.04	12.76	1.39	13.27	146.29	8.58	1.49	10.46	14.56	133.31
Colon and Rectum	83.97	39.28	2.14	33.76	2.14	83.91	100.07	38.37	0.88	38.33	81.90	102.54
Liver	6.80	3.79	1.79	8.30	1.33	5.06	134.38	7.18	1.16	3.91	5.22	130.31
Pancreas	14.28	16.75	0.85	15.69	1.03	17.29	82.60	17.60	0.89	16.38	16.91	84.43
Lung and Bronchus	126.07	135.79	0.93	101.54	1.12	152.59	82.62	130.48	0.78	129.77	145.82	86.45
Melanoma of the Skin												
Prostate												
Urinary Bladder	22.08	8.42	2.62	5.42	3.65	30.73	71.84	6.31	0.86	8.19	29.86	73.92
Kidney and Renal Pelvis	19.66	7.29	2.70	6.28	3.15	22.98	85.54	7.34	0.85	7.08	22.31	88.11
Brain and Other Nervous System	1.19	2.18	0.54	3.23	1.41	3.06	38.67	2.90	1.11	2.23	3.13	37.82
Hodgkin's Disease	2.59	0.00	0.00	0.53	5.41	0.00	0.00	0.54	0.99	0.00	0.00	0.00
Non-Hodgkin's Lymphomas	21.24	13.35	1.59	7.18	2.47	33.00	64.37	10.74	0.67	12.47	30.81	68.94
Multiple Myeloma	14.67	9.08	1.62	8.85	1.49	13.54	108.37	8.62	1.03	9.13	13.61	107.80
Leukemias	17.74	10.89	1.63	8.90	1.39	15.16	116.97	11.61	0.77	10.38	14.46	122.70
Sum of Rates for Black Males	382.89					431.48	88.74				418.92	91.40

Black Females	Kentucky			SEER (11 Regs) and US Mortality		Initial Results		Mortality Adjustment Terms			Adjusted for Mortality	
	Age-Adjusted Rates (2000 US)			Age-Adjusted Rates (2000 US)		Expected	Initial	Registry	Adj Reg	Adj Reg	Expected	Interim
	2001	2000-2001	Inc/Mort	1998-2002	Inc/Mort	Incidence	Percent	1998-2002	Term		2000	Incidence
Cancer Site	Incidence	Mortality	Ratio	Mortality	Ratio	Rate	Complete	Mort Rate		Mort Rate	Rate	Complete
Oral Cavity and Pharynx	5.54	2.73	2.03	1.90	3.20	8.73	63.44	2.99	0.64	2.53	8.09	68.41
Esophagus	2.32	2.39	0.97	3.16	1.15	2.74	84.81	2.34	1.35	2.55	2.93	79.25
Stomach	7.37	3.37	2.19	6.17	1.55	5.23	140.94	4.78	1.29	3.56	5.53	133.21
Colon and Rectum	65.19	30.75	2.12	24.23	2.33	71.64	90.99	29.64	0.82	29.63	69.03	94.43
Liver	0.79	2.17	0.36	3.08	1.11	2.41	32.62	3.28	0.94	2.14	2.38	33.03
Pancreas	9.28	10.57	0.88	12.59	1.08	11.46	81.00	12.94	0.97	10.51	11.40	81.44
Lung and Bronchus	79.42	81.09	1.30	39.40	1.39	85.18	93.24	59.17	0.67	57.01	79.49	99.92
Melanoma of the Skin												
Breast	139.90	33.01	4.24	34.63	3.45	113.95	122.77	36.81	0.94	32.62	112.60	124.25
Cervix	16.46	6.36	2.59	5.25	2.10	13.38	123.06	4.92	1.07	6.44	13.56	121.44
Corpus and Uterus, NOS	13.39	8.25	1.62	6.94	2.72	22.41	59.76	5.99	1.16	8.51	23.12	57.91
Ovary	7.59	8.22	0.92	7.36	1.34	11.03	68.80	7.64	0.96	8.16	10.95	69.31
Urinary Bladder	6.54	2.42	2.71	2.89	2.66	6.42	101.89	2.92	0.99	2.41	6.40	102.16
Kidney and Renal Pelvis	12.02	3.38	3.55	2.72	3.52	11.90	101.01	3.46	0.79	3.24	11.40	105.50
Brain and Other Nervous System	6.97	3.93	1.77	2.22	1.55	6.08	114.61	3.51	0.63	3.65	5.63	123.70
Hodgkin's Disease	1.89	0.41	4.57	0.33	6.58	2.72	69.40	0.33	0.99	0.41	2.72	69.48
Non-Hodgkin's Lymphomas	10.12	3.45	2.93	4.45	2.63	9.07	111.52	3.88	1.15	3.56	9.34	108.32
Multiple Myeloma	6.12	4.76	1.29	6.51	1.48	7.05	86.78	6.25	1.04	4.80	7.11	86.06
Leukemias	10.06	4.97	2.02	5.38	1.45	7.19	140.03	5.09	1.06	5.03	7.27	138.44
Sum of Rates for Black Females	400.98					398.60	100.60				388.96	103.09

Sum of Rates for Blacks	392.13					414.69	94.56				403.62	97.37
--------------------------------	---------------	--	--	--	--	---------------	--------------	--	--	--	---------------	--------------

**National Program of Cancer Registries-Cancer Surveillance System
SSR1 - Standard Status Report - 2005**

**Estimated Completeness of Case Ascertainment for Whites
Kentucky - 2001**

White Males	Kentucky			SEER (11 Regs) and US Mortality			Initial Results		Mortality Adjustment Terms			Adjusted for Mortality	
	Age-Adjusted Rates (2000 US)			Age-Adjusted Rates (2000 US)			Expected	Initial	Registry	Adj Reg	Expected	Interim	
	2001	2000-2001	Inc/Mort	1998-2002	Inc/Mort	Ratio	Incidence	Percent	1998-2002	Adjust.	2000	Incidence	Percent
Cancer Site	Incidence	Mortality	Ratio	Mortality	Ratio	Rate	Complete	Mort Rate	Term	Mort Rate	Rate	Complete	
Oral Cavity and Pharynx	16.77	5.04	3.33	3.87	3.99	20.12	83.32	4.94	0.78	4.82	19.25	87.08	
Esophagus	8.09	7.86	1.03	7.49	1.03	8.08	100.08	7.86	0.95	7.78	8.01	101.02	
Stomach	9.05	4.65	1.95	5.60	1.91	8.86	102.16	5.32	1.05	4.70	8.95	101.10	
Colon and Rectum	76.38	27.89	2.74	24.25	2.54	70.93	107.68	28.21	0.86	27.11	68.94	110.79	
Liver	4.76	4.44	1.07	5.04	1.27	5.62	84.68	5.04	1.00	4.44	5.62	84.66	
Pancreas	11.73	11.02	1.06	11.96	1.04	11.50	101.97	11.63	1.03	11.08	11.57	101.38	
Lung and Bronchus	144.18	117.73	1.22	75.24	1.02	120.05	120.11	113.62	0.66	109.78	111.94	128.81	
Melanoma of the Skin	27.38	5.04	5.43	4.35	5.98	30.11	90.93	4.94	0.88	4.92	29.40	93.12	
Prostate													
Urinary Bladder	38.21	8.22	4.65	7.89	5.02	41.30	92.53	8.19	0.96	8.17	41.00	93.20	
Kidney and Renal Pelvis	21.83	6.95	3.14	6.19	2.69	18.67	116.92	6.94	0.89	6.79	18.27	119.51	
Brain and Other Nervous System	7.22	6.39	1.13	5.94	1.42	9.08	79.48	6.22	0.95	6.34	9.00	80.21	
Hodgkin's Disease	3.87	0.72	5.34	0.60	5.37	3.89	99.48	0.67	0.90	0.71	3.81	101.56	
Non-Hodgkin's Lymphomas	19.77	10.62	1.86	10.57	2.31	24.56	80.47	10.76	0.98	10.59	24.48	80.75	
Multiple Myeloma	6.12	5.30	1.15	4.38	1.51	8.01	76.33	5.11	0.86	5.14	7.78	78.59	
Leukemias	15.50	10.24	1.51	10.38	1.62	16.59	93.42	10.66	0.97	10.18	16.50	93.91	
Sum of Rates for White Males	410.85					397.39	103.39				384.53	106.84	

White Females	Kentucky			SEER (11 Regs) and US Mortality			Initial Results		Mortality Adjustment Terms			Adjusted for Mortality	
	Age-Adjusted Rates (2000 US)			Age-Adjusted Rates (2000 US)			Expected	Initial	Registry	Adj Reg	Expected	Interim	
	2001	2000-2001	Inc/Mort	1998-2002	Inc/Mort	Ratio	Incidence	Percent	1998-2002	Adjust.	2000	Incidence	Percent
Cancer Site	Incidence	Mortality	Ratio	Mortality	Ratio	Rate	Complete	Mort Rate	Term	Mort Rate	Rate	Complete	
Oral Cavity and Pharynx	6.13	1.68	3.66	1.56	4.12	6.90	88.85	1.57	0.99	1.67	6.89	88.97	
Esophagus	1.80	1.30	1.39	1.66	1.16	1.50	119.89	1.43	1.16	1.34	1.55	116.12	
Stomach	2.97	2.57	1.16	2.78	1.83	4.69	63.38	2.57	1.08	2.61	4.77	62.35	
Colon and Rectum	52.97	18.91	2.80	16.87	2.70	50.99	103.89	18.94	0.89	18.49	49.87	106.22	
Liver	1.83	2.21	0.83	1.87	1.23	2.72	67.33	2.13	0.88	2.15	2.66	68.99	
Pancreas	8.79	8.10	1.08	8.96	1.06	8.61	102.06	8.51	1.05	8.19	8.70	100.97	
Lung and Bronchus	73.82	53.59	1.38	41.62	1.22	65.50	112.71	53.56	0.78	51.21	62.57	117.97	
Melanoma of the Skin	19.60	2.62	7.48	1.99	8.66	22.68	86.42	2.10	0.95	2.59	22.45	87.32	
Breast	124.55	26.42	4.71	25.89	5.45	144.09	86.43	26.51	0.98	26.30	143.43	86.84	
Cervix	10.65	2.76	3.86	2.50	3.53	9.74	109.31	3.08	0.81	2.65	9.38	113.58	
Corpus and Uterus, NOS	22.15	3.42	6.48	3.87	6.64	22.72	97.48	3.45	1.12	3.50	23.29	95.11	
Ovary	12.74	8.61	1.48	9.16	1.61	13.84	92.05	8.68	1.06	8.71	13.99	91.04	
Urinary Bladder	9.08	2.43	3.73	2.24	4.35	10.59	85.60	2.48	0.90	2.39	10.38	87.29	
Kidney and Renal Pelvis	10.27	3.67	2.80	2.81	2.94	10.80	95.08	3.25	0.86	3.57	10.51	97.73	
Brain and Other Nervous System	5.56	3.86	1.44	3.96	1.50	5.79	96.07	3.91	1.01	3.87	5.81	95.79	
Hodgkin's Disease	2.88	0.37	7.78	0.40	6.54	2.42	119.09	0.38	1.06	0.37	2.45	117.69	
Non-Hodgkin's Lymphomas	17.62	7.19	2.45	6.96	2.42	17.39	101.34	7.18	0.97	7.14	17.28	101.96	
Multiple Myeloma	3.97	2.89	1.38	2.90	1.42	4.10	96.82	3.12	0.93	2.84	4.04	98.22	
Leukemias	10.65	6.13	1.74	5.99	1.66	10.21	104.29	5.56	1.08	6.23	10.37	102.69	
Sum of Rates for White Females	398.02					415.29	95.84				410.39	96.99	

Sum of Rates for Whites	404.30					406.53	99.45				397.73	101.81
--------------------------------	---------------	--	--	--	--	---------------	--------------	--	--	--	---------------	---------------

**National Program of Cancer Registries-Cancer Surveillance System
SSR1 - Standard Status Report - 2005**

Kentucky - 2001

Estimated Completeness Summary

Interim Completeness Estimates Adjusted for Reference Mortality					
Whites		Blacks		Race Proportional	
Percent Complete	Population	Percent Complete	Population	Percent Complete	Population
101.81	3,706,857	97.37	313,459	101.46	4,020,316

Final Completeness Estimates Adjusted for Reference Mortality and Duplicate Records			
Total Incident Cases	21527	Adjusted Total Incident Cases	21527
Race Proportional Completeness, Adjusted for Reference Mortality	101.46	Expected Incident Cases	21216
%Unresolved Duplicates*	0.00	Final Completeness Estimates, Adjusted for Reference Mortality and Duplicate Records	101.46

* 0.00 indicates all duplicates are resolved.

**National Program of Cancer Registries-Cancer Surveillance System
SSR1 - Standard Status Report - 2005**

**Estimated Completeness of Case Ascertainment for Blacks
Kentucky - 2000**

Black Males	Kentucky			SEER (11 Regs) and US Mortality		Initial Results		Mortality Adjustment Terms			Adjusted for Mortality	
	Age-Adjusted Rates (2000 US)			Age-Adjusted Rates (2000 US)		Expected	Initial	Registry	Adj Reg	Incidence	Interim	
	2000	1999-2000	Inc/Mort	1998-2002	Inc/Mort	Incidence	Percent	1998-2002	Term			2000
Cancer Site	Incidence	Mortality	Ratio	Mortality	Ratio	Rate	Complete	Mort Rate	Term	Mort Rate	Rate	Complete
Oral Cavity and Pharynx	23.95	9.85	2.43	7.15	2.68	26.39	90.77	7.76	0.92	9.70	25.98	92.22
Esophagus	20.20	12.55	1.61	11.40	0.91	11.46	176.21	11.90	0.96	12.45	11.37	177.71
Stomach	9.90	8.31	1.19	12.76	1.39	11.56	85.64	8.58	1.49	9.12	12.69	78.04
Colon and Rectum	78.07	44.89	1.74	33.76	2.14	95.91	81.39	38.37	0.88	43.81	93.61	83.40
Liver	3.07	7.41	0.41	8.30	1.33	9.88	31.04	7.18	1.16	7.64	10.19	30.10
Pancreas	20.41	17.65	1.16	15.69	1.03	18.22	112.03	17.60	0.89	17.26	17.82	114.52
Lung and Bronchus	172.97	137.34	1.26	101.54	1.12	154.34	112.07	130.48	0.78	131.25	147.49	117.28
Melanoma of the Skin												
Prostate												
Urinary Bladder	25.67	6.17	4.16	5.42	3.65	22.49	114.12	6.31	0.86	5.99	21.86	117.43
Kidney and Renal Pelvis	27.89	8.63	3.23	6.28	3.15	27.21	102.52	7.34	0.85	8.38	26.41	105.60
Brain and Other Nervous System	4.41	2.84	1.55	3.23	1.41	3.99	110.33	2.90	1.11	2.90	4.08	107.91
Hodgkin's Disease	4.73	0.00	0.00	0.53	5.41	0.00	0.00	0.54	0.99	0.00	0.00	0.00
Non-Hodgkin's Lymphomas	22.07	9.38	2.35	7.18	2.47	23.18	95.17	10.74	0.67	8.76	21.65	101.93
Multiple Myeloma	10.44	8.13	1.29	8.85	1.49	12.12	86.17	8.62	1.03	8.17	12.19	85.71
Leukemias	9.04	10.84	0.83	8.90	1.39	15.09	59.90	11.61	0.77	10.33	14.39	62.83
Sum of Rates for Black Males	432.81					431.85	100.22				419.71	103.12

Black Females	Kentucky			SEER (11 Regs) and US Mortality		Initial Results		Mortality Adjustment Terms			Adjusted for Mortality	
	Age-Adjusted Rates (2000 US)			Age-Adjusted Rates (2000 US)		Expected	Initial	Registry	Adj Reg	Incidence	Interim	
	2000	1999-2000	Inc/Mort	1998-2002	Inc/Mort	Incidence	Percent	1998-2002	Term			2000
Cancer Site	Incidence	Mortality	Ratio	Mortality	Ratio	Rate	Complete	Mort Rate	Term	Mort Rate	Rate	Complete
Oral Cavity and Pharynx	10.10	4.31	2.35	1.90	3.20	13.76	73.44	2.99	0.64	3.99	12.76	79.20
Esophagus	4.77	1.21	3.93	3.16	1.15	1.39	342.82	2.34	1.35	1.30	1.49	320.36
Stomach	7.23	6.62	1.09	6.17	1.55	10.27	70.43	4.78	1.29	7.00	10.87	66.56
Colon and Rectum	73.45	25.28	2.90	24.23	2.33	58.91	124.69	29.64	0.82	24.36	56.76	129.41
Liver	2.96	4.64	0.64	3.08	1.11	5.15	57.42	3.28	0.94	4.58	5.09	58.14
Pancreas	11.18	12.70	0.88	12.59	1.08	13.77	81.18	12.94	0.97	12.63	13.70	81.62
Lung and Bronchus	79.58	59.80	1.33	39.40	1.39	83.37	95.45	59.17	0.67	55.80	77.80	102.29
Melanoma of the Skin												
Breast	128.70	32.82	3.92	34.63	3.45	113.28	113.62	36.81	0.94	32.43	111.93	114.98
Cervix	14.25	5.86	2.43	5.25	2.10	12.33	115.62	4.92	1.07	5.94	12.49	114.09
Corpus and Uterus, NOS	18.72	7.48	2.50	6.94	2.72	20.31	92.17	5.99	1.16	7.72	20.96	89.33
Ovary	18.35	10.50	1.75	7.36	1.34	14.09	130.20	7.64	0.96	10.42	13.99	131.16
Urinary Bladder	6.68	2.77	2.41	2.89	2.66	7.37	90.76	2.92	0.99	2.77	7.35	91.00
Kidney and Renal Pelvis	12.34	2.96	4.16	2.72	3.52	10.42	118.40	3.46	0.79	2.84	9.98	123.66
Brain and Other Nervous System	5.49	2.10	2.62	2.22	1.55	3.24	169.23	3.51	0.63	1.94	3.01	182.65
Hodgkin's Disease	1.08	0.00	0.00	0.33	6.58	0.00	0.00	0.33	0.99	0.00	0.00	0.00
Non-Hodgkin's Lymphomas	10.64	3.81	2.79	4.45	2.63	10.00	106.32	3.88	1.15	3.92	10.30	103.28
Multiple Myeloma	9.18	5.60	1.64	6.51	1.48	8.30	110.71	6.25	1.04	5.65	8.36	109.79
Leukemias	4.07	5.31	0.77	5.38	1.45	7.68	53.05	5.09	1.06	5.37	7.77	52.44
Sum of Rates for Black Females	418.80					393.64	106.39				384.60	108.89

Sum of Rates for Blacks 425.63 412.29 103.24 401.73 106.08

**National Program of Cancer Registries-Cancer Surveillance System
SSR1 - Standard Status Report - 2005**

**Estimated Completeness of Case Ascertainment for Whites
Kentucky - 2000**

White Males	Kentucky			SEER (11 Regs) and US Mortality		Initial Results		Mortality Adjustment Terms			Adjusted for Mortality	
	Age-Adjusted Rates (2000 US)			Age-Adjusted Rates (2000 US)		Expected	Initial	Registry	Adj Reg	Expected	Interim	
	2000	1999-2000	Inc/Mort	1998-2002	Inc/Mort	Incidence	Percent	1998-2002	Adjust.			2000
Cancer Site	Incidence	Mortality	Ratio	Mortality	Ratio	Rate	Complete	Mort Rate	Term	Mort Rate	Rate	Complete
Oral Cavity and Pharynx	19.69	4.98	3.96	3.87	3.99	19.87	99.09	4.94	0.78	4.76	19.01	103.57
Esophagus	9.45	7.46	1.27	7.49	1.03	7.68	123.06	7.86	0.95	7.39	7.60	124.21
Stomach	8.57	5.14	1.67	5.60	1.91	9.80	87.46	5.32	1.05	5.20	9.90	86.55
Colon and Rectum	70.53	28.85	2.44	24.25	2.54	73.36	96.15	28.21	0.86	28.04	71.30	98.92
Liver	4.74	4.67	1.02	5.04	1.27	5.91	80.22	5.04	1.00	4.67	5.92	80.20
Pancreas	10.48	12.10	0.87	11.96	1.04	12.63	82.99	11.63	1.03	12.17	12.71	82.51
Lung and Bronchus	138.93	111.48	1.25	75.24	1.02	113.68	122.22	113.62	0.66	103.95	106.00	131.07
Melanoma of the Skin	24.93	4.51	5.53	4.35	5.98	26.94	92.56	4.94	0.88	4.40	26.30	94.79
Prostate												
Urinary Bladder	39.29	8.43	4.66	7.89	5.02	42.32	92.84	8.19	0.96	8.37	42.02	93.52
Kidney and Renal Pelvis	18.90	6.29	3.00	6.19	2.69	16.92	111.72	6.94	0.89	6.16	16.55	114.19
Brain and Other Nervous System	8.71	5.90	1.48	5.94	1.42	8.38	103.95	6.22	0.95	5.84	8.30	104.91
Hodgkin's Disease	3.71	0.49	7.58	0.60	5.37	2.63	141.17	0.67	0.90	0.48	2.57	144.12
Non-Hodgkin's Lymphomas	23.65	10.66	2.22	10.57	2.31	24.66	95.92	10.76	0.98	10.63	24.57	96.26
Multiple Myeloma	7.51	4.99	1.50	4.38	1.51	7.55	99.47	5.11	0.86	4.85	7.33	102.41
Leukemias	13.29	9.99	1.33	10.38	1.62	16.19	82.06	10.66	0.97	9.94	16.11	82.50
Sum of Rates for White Males	402.41					388.52	103.57				376.21	106.96

White Females	Kentucky			SEER (11 Regs) and US Mortality		Initial Results		Mortality Adjustment Terms			Adjusted for Mortality	
	Age-Adjusted Rates (2000 US)			Age-Adjusted Rates (2000 US)		Expected	Initial	Registry	Adj Reg	Expected	Interim	
	2000	1999-2000	Inc/Mort	1998-2002	Inc/Mort	Incidence	Percent	1998-2002	Adjust.			2000
Cancer Site	Incidence	Mortality	Ratio	Mortality	Ratio	Rate	Complete	Mort Rate	Term	Mort Rate	Rate	Complete
Oral Cavity and Pharynx	5.39	1.53	3.53	1.56	4.12	6.28	85.73	1.57	0.99	1.52	6.27	85.85
Esophagus	1.40	1.49	0.94	1.66	1.16	1.72	81.53	1.43	1.16	1.54	1.78	78.97
Stomach	3.75	2.82	1.33	2.78	1.83	5.15	72.76	2.57	1.08	2.86	5.24	71.57
Colon and Rectum	53.52	18.42	2.91	16.87	2.70	49.66	107.75	18.94	0.89	18.01	48.58	110.17
Liver	1.79	1.89	0.95	1.87	1.23	2.34	76.71	2.13	0.88	1.85	2.28	78.61
Pancreas	8.56	7.82	1.09	8.96	1.06	8.31	102.99	8.51	1.05	7.90	8.40	101.90
Lung and Bronchus	72.92	51.58	1.41	41.62	1.22	63.03	115.69	53.56	0.78	49.28	60.22	121.09
Melanoma of the Skin	17.50	2.09	8.37	1.99	8.66	18.09	96.71	2.10	0.95	2.07	17.90	97.72
Breast	125.62	25.98	4.83	25.89	5.45	141.71	88.65	26.51	0.98	25.86	141.05	89.06
Cervix	10.86	3.34	3.25	2.50	3.53	11.81	91.98	3.08	0.81	3.22	11.36	95.58
Corpus and Uterus, NOS	24.92	3.72	6.70	3.87	6.64	24.70	100.90	3.45	1.12	3.81	25.32	98.45
Ovary	17.16	8.52	2.01	9.16	1.61	13.70	125.25	8.68	1.06	8.62	13.85	123.87
Urinary Bladder	10.09	2.79	3.61	2.24	4.35	12.15	83.05	2.48	0.90	2.74	11.92	84.69
Kidney and Renal Pelvis	9.98	3.10	3.22	2.81	2.94	9.12	109.41	3.25	0.86	3.01	8.87	112.45
Brain and Other Nervous System	5.70	3.94	1.45	3.96	1.50	5.92	96.22	3.91	1.01	3.95	5.94	95.95
Hodgkin's Disease	2.79	0.36	7.83	0.40	6.54	2.33	119.83	0.38	1.06	0.36	2.35	118.42
Non-Hodgkin's Lymphomas	16.92	7.38	2.29	6.96	2.42	17.87	94.71	7.18	0.97	7.34	17.76	95.29
Multiple Myeloma	3.84	3.14	1.22	2.90	1.42	4.47	86.07	3.12	0.93	3.10	4.40	87.32
Leukemias	7.27	6.02	1.21	5.99	1.66	10.02	72.49	5.56	1.08	6.12	10.18	71.39
Sum of Rates for White Females	399.97					408.38	97.94				403.67	99.08

Sum of Rates for Whites	401.16					398.67	100.62				390.25	102.94
--------------------------------	---------------	--	--	--	--	---------------	---------------	--	--	--	---------------	---------------

**National Program of Cancer Registries-Cancer Surveillance System
SSR1 - Standard Status Report - 2005**

Kentucky - 2000

Estimated Completeness Summary

Interim Completeness Estimates Adjusted for Reference Mortality					
Whites		Blacks		Race Proportional	
Percent Complete	Population	Percent Complete	Population	Percent Complete	Population
102.94	3,695,215	106.08	309,092	103.18	4,004,307

Final Completeness Estimates Adjusted for Reference Mortality and Duplicate Records			
Total Incident Cases	21161	Adjusted Total Incident Cases	21161
Race Proportional Completeness, Adjusted for Reference Mortality	103.18	Expected Incident Cases	20509
%Unresolved Duplicates*	0.00	Final Completeness Estimates, Adjusted for Reference Mortality and Duplicate Records	103.18

* 0.00 indicates all duplicates are resolved.

**National Program of Cancer Registries-Cancer Surveillance System
SSR1 - Standard Status Report - 2005**

**Estimated Completeness of Case Ascertainment for Blacks
Kentucky - 1999**

Black Males	Kentucky			SEER (11 Regs) and US Mortality		Initial Results		Mortality Adjustment Terms			Adjusted for Mortality	
	Age-Adjusted Rates (2000 US)			Age-Adjusted Rates (2000 US)		Expected	Initial	Registry	Adj Reg	Expected	Interim	
	1999	1998-1999	Inc/Mort	1998-2002	Inc/Mort	Incidence	Percent	1998-2002	Adj. Term	2000	Incidence	Percent
Cancer Site	Incidence	Mortality	Ratio	Mortality	Ratio	Rate	Complete	Mort Rate		Mort Rate	Rate	Complete
Oral Cavity and Pharynx	22.89	7.18	3.19	7.15	2.68	19.23	119.04	7.76	0.92	7.06	18.93	120.94
Esophagus	11.52	9.17	1.26	11.40	0.91	8.37	137.61	11.90	0.96	9.09	8.30	138.77
Stomach	11.28	4.85	2.33	12.76	1.39	6.75	167.27	8.58	1.49	5.32	7.40	152.43
Colon and Rectum	71.81	38.34	1.87	33.76	2.14	81.91	87.66	38.37	0.88	37.42	79.94	89.82
Liver	6.26	9.86	0.64	8.30	1.33	13.15	47.60	7.18	1.16	10.17	13.56	46.16
Pancreas	15.08	17.20	0.88	15.69	1.03	17.75	84.94	17.60	0.89	16.82	17.37	86.83
Lung and Bronchus	125.57	131.03	0.96	101.54	1.12	147.25	85.28	130.48	0.78	125.22	140.71	89.24
Melanoma of the Skin												
Prostate												
Urinary Bladder	25.45	4.92	5.17	5.42	3.65	17.97	141.64	6.31	0.86	4.79	17.46	145.74
Kidney and Renal Pelvis	21.72	9.22	2.36	6.28	3.15	29.05	74.75	7.34	0.85	8.95	28.21	76.99
Brain and Other Nervous System	4.33	4.55	0.95	3.23	1.41	6.40	67.65	2.90	1.11	4.65	6.54	66.17
Hodgkin's Disease	1.98	0.00	0.00	0.53	5.41	0.00	0.00	0.54	0.99	0.00	0.00	0.00
Non-Hodgkin's Lymphomas	21.54	7.82	2.75	7.18	2.47	19.33	111.45	10.74	0.67	7.30	18.04	119.37
Multiple Myeloma	13.70	9.56	1.43	8.85	1.49	14.26	96.08	8.62	1.03	9.61	14.33	95.57
Leukemias	12.43	14.45	0.86	8.90	1.39	20.12	61.77	11.61	0.77	13.77	19.18	64.79
Sum of Rates for Black Males	365.55					401.54	91.04				389.99	93.73

Black Females	Kentucky			SEER (11 Regs) and US Mortality		Initial Results		Mortality Adjustment Terms			Adjusted for Mortality	
	Age-Adjusted Rates (2000 US)			Age-Adjusted Rates (2000 US)		Expected	Initial	Registry	Adj Reg	Expected	Interim	
	1999	1998-1999	Inc/Mort	1998-2002	Inc/Mort	Incidence	Percent	1998-2002	Adj. Term	2000	Incidence	Percent
Cancer Site	Incidence	Mortality	Ratio	Mortality	Ratio	Rate	Complete	Mort Rate		Mort Rate	Rate	Complete
Oral Cavity and Pharynx	5.71	3.17	1.80	1.90	3.20	10.12	56.40	2.99	0.64	2.94	9.38	60.82
Esophagus	0.79	2.77	0.28	3.16	1.15	3.18	24.78	2.34	1.35	2.96	3.40	23.15
Stomach	10.30	6.28	1.64	6.17	1.55	9.75	105.64	4.78	1.29	6.65	10.32	99.84
Colon and Rectum	64.67	25.31	2.56	24.23	2.33	58.97	109.68	29.64	0.82	24.39	56.81	113.83
Liver	3.06	5.65	0.54	3.08	1.11	6.28	48.75	3.28	0.94	5.58	6.21	49.36
Pancreas	13.48	15.24	0.88	12.59	1.08	16.53	81.58	12.94	0.97	15.15	16.44	82.02
Lung and Bronchus	85.69	59.86	1.43	39.40	1.39	83.47	102.66	59.17	0.67	55.86	77.89	110.01
Melanoma of the Skin												
Breast	130.43	40.58	3.21	34.63	3.45	140.06	93.12	36.81	0.94	40.10	138.40	94.24
Cervix	16.17	4.37	3.70	5.25	2.10	9.20	175.79	4.92	1.07	4.43	9.32	173.46
Corpus and Uterus, NOS	15.27	4.56	3.35	6.94	2.72	12.38	123.41	5.99	1.16	4.70	12.77	119.60
Ovary	9.57	7.29	1.31	7.36	1.34	9.78	97.80	7.64	0.96	7.24	9.71	98.52
Urinary Bladder	7.53	2.58	2.91	2.89	2.66	6.86	109.68	2.92	0.99	2.58	6.85	109.97
Kidney and Renal Pelvis	9.02	3.01	3.00	2.72	3.52	10.57	85.26	3.46	0.79	2.88	10.12	89.04
Brain and Other Nervous System	5.17	3.32	1.55	2.22	1.55	5.14	100.61	3.51	0.63	3.08	4.76	108.59
Hodgkin's Disease	2.86	0.00	0.00	0.33	6.58	0.00	0.00	0.33	0.99	0.00	0.00	0.00
Non-Hodgkin's Lymphomas	9.79	4.25	2.30	4.45	2.63	11.17	87.65	3.88	1.15	4.38	11.50	85.14
Multiple Myeloma	7.64	7.10	1.08	6.51	1.48	10.53	72.57	6.25	1.04	7.16	10.61	71.97
Leukemias	5.34	5.18	1.03	5.38	1.45	7.49	71.38	5.09	1.06	5.24	7.57	70.57
Sum of Rates for Black Females	402.48					411.47	97.82				402.07	100.10

Sum of Rates for Blacks	384.55					406.65	94.57				396.20	97.01
--------------------------------	---------------	--	--	--	--	---------------	--------------	--	--	--	---------------	--------------

**National Program of Cancer Registries-Cancer Surveillance System
SSR1 - Standard Status Report - 2005**

**Estimated Completeness of Case Ascertainment for Whites
Kentucky - 1999**

White Males	Kentucky			SEER (11 Regs) and US Mortality		Initial Results		Mortality Adjustment Terms			Adjusted for Mortality	
	Age-Adjusted Rates (2000 US)			Age-Adjusted Rates (2000 US)		Expected	Initial	Registry	Adj Reg	Expected	Interim	
	1999	1998-1999	Inc/Mort	1998-2002	Inc/Mort	Incidence	Percent	1998-2002	Term			2000
Cancer Site	Incidence	Mortality	Ratio	Mortality	Ratio	Rate	Complete	Mort Rate		Mort Rate	Rate	Complete
Oral Cavity and Pharynx	16.61	5.20	3.20	3.87	3.99	20.76	80.03	4.94	0.78	4.97	19.86	83.64
Esophagus	7.65	7.61	1.00	7.49	1.03	7.83	97.64	7.86	0.95	7.54	7.76	98.56
Stomach	9.22	5.86	1.57	5.60	1.91	11.17	82.56	5.32	1.05	5.92	11.28	81.70
Colon and Rectum	73.94	27.85	2.65	24.25	2.54	70.81	104.38	28.21	0.86	27.07	68.83	107.39
Liver	4.76	5.18	0.92	5.04	1.27	6.57	72.43	5.04	1.00	5.19	6.57	72.42
Pancreas	11.87	12.28	0.97	11.96	1.04	12.82	92.57	11.63	1.03	12.35	12.89	92.04
Lung and Bronchus	140.87	109.85	1.28	75.24	1.02	112.01	125.76	113.62	0.66	102.42	104.44	134.88
Melanoma of the Skin	24.05	4.60	5.23	4.35	5.98	27.48	87.55	4.94	0.88	4.49	26.83	89.66
Prostate												
Urinary Bladder	39.26	8.30	4.73	7.89	5.02	41.67	94.21	8.19	0.96	8.24	41.37	94.90
Kidney and Renal Pelvis	17.71	6.96	2.54	6.19	2.69	18.72	94.60	6.94	0.89	6.81	18.31	96.69
Brain and Other Nervous System	7.96	6.08	1.31	5.94	1.42	8.64	92.13	6.22	0.95	6.02	8.56	92.98
Hodgkin's Disease	3.03	0.50	6.01	0.60	5.37	2.70	112.05	0.67	0.90	0.49	2.65	114.39
Non-Hodgkin's Lymphomas	22.13	11.42	1.94	10.57	2.31	26.40	83.83	10.76	0.98	11.38	26.31	84.12
Multiple Myeloma	7.74	5.19	1.49	4.38	1.51	7.85	98.64	5.11	0.86	5.04	7.62	101.56
Leukemias	14.42	10.33	1.40	10.38	1.62	16.75	86.09	10.66	0.97	10.28	16.66	86.55
Sum of Rates for White Males	401.18					392.17	102.30				379.94	105.59

White Females	Kentucky			SEER (11 Regs) and US Mortality		Initial Results		Mortality Adjustment Terms			Adjusted for Mortality	
	Age-Adjusted Rates (2000 US)			Age-Adjusted Rates (2000 US)		Expected	Initial	Registry	Adj Reg	Expected	Interim	
	1999	1998-1999	Inc/Mort	1998-2002	Inc/Mort	Incidence	Percent	1998-2002	Term			2000
Cancer Site	Incidence	Mortality	Ratio	Mortality	Ratio	Rate	Complete	Mort Rate		Mort Rate	Rate	Complete
Oral Cavity and Pharynx	6.33	1.52	4.15	1.56	4.12	6.27	100.94	1.57	0.99	1.52	6.26	101.08
Esophagus	1.76	1.64	1.07	1.66	1.16	1.90	92.75	1.43	1.16	1.70	1.96	89.83
Stomach	4.54	2.86	1.59	2.78	1.83	5.23	86.92	2.57	1.08	2.91	5.31	85.51
Colon and Rectum	52.26	18.59	2.81	16.87	2.70	50.12	104.28	18.94	0.89	18.18	49.02	106.62
Liver	1.69	2.04	0.83	1.87	1.23	2.52	66.99	2.13	0.88	1.99	2.46	68.65
Pancreas	9.29	8.46	1.10	8.96	1.06	8.98	103.46	8.51	1.05	8.55	9.08	102.36
Lung and Bronchus	70.89	51.28	1.38	41.62	1.22	62.67	113.12	53.56	0.78	48.99	59.87	118.39
Melanoma of the Skin	17.39	1.75	9.94	1.99	8.66	15.14	114.83	2.10	0.95	1.73	14.99	116.03
Breast	130.71	26.37	4.96	25.89	5.45	143.82	90.88	26.51	0.98	26.25	143.16	91.30
Cervix	11.09	3.77	2.94	2.50	3.53	13.33	83.19	3.08	0.81	3.63	12.83	86.44
Corpus and Uterus, NOS	19.70	3.64	5.41	3.87	6.64	24.20	81.40	3.45	1.12	3.73	24.80	79.42
Ovary	15.36	8.32	1.85	9.16	1.61	13.38	114.97	8.68	1.06	8.42	13.53	113.71
Urinary Bladder	8.94	2.59	3.45	2.24	4.35	11.27	79.37	2.48	0.90	2.54	11.05	80.94
Kidney and Renal Pelvis	9.35	3.01	3.10	2.81	2.94	8.86	105.42	3.25	0.86	2.93	8.62	108.36
Brain and Other Nervous System	5.85	4.05	1.44	3.96	1.50	6.09	96.05	3.91	1.01	4.07	6.11	95.77
Hodgkin's Disease	2.30	0.37	6.25	0.40	6.54	2.40	95.60	0.38	1.06	0.37	2.43	94.48
Non-Hodgkin's Lymphomas	15.50	7.53	2.06	6.96	2.42	18.23	85.06	7.18	0.97	7.49	18.11	85.59
Multiple Myeloma	4.83	3.28	1.47	2.90	1.42	4.66	103.78	3.12	0.93	3.23	4.59	105.28
Leukemias	8.29	5.16	1.61	5.99	1.66	8.60	96.48	5.56	1.08	5.24	8.73	95.00
Sum of Rates for White Females	396.09					407.65	97.16				402.90	98.31

Sum of Rates for Whites	398.57					400.09	99.62				391.69	101.86
--------------------------------	---------------	--	--	--	--	---------------	--------------	--	--	--	---------------	---------------

**National Program of Cancer Registries-Cancer Surveillance System
SSR1 - Standard Status Report - 2005**

Kentucky - 1999

Estimated Completeness Summary

Interim Completeness Estimates Adjusted for Reference Mortality					
Whites		Blacks		Race Proportional	
Percent Complete	Population	Percent Complete	Population	Percent Complete	Population
101.86	3,676,835	97.01	303,642	101.49	3,980,477

Final Completeness Estimates Adjusted for Reference Mortality and Duplicate Records			
Total Incident Cases	20734	Adjusted Total Incident Cases	20734
Race Proportional Completeness, Adjusted for Reference Mortality	101.49	Expected Incident Cases	20429
%Unresolved Duplicates*	0.00	Final Completeness Estimates, Adjusted for Reference Mortality and Duplicate Records	101.49

* 0.00 indicates all duplicates are resolved.

**National Program of Cancer Registries-Cancer Surveillance System
SSR1 - Standard Status Report - 2005**

**Estimated Completeness of Case Ascertainment for Blacks
Kentucky - 1998**

Black Males	Kentucky			SEER (11 Regs) and US Mortality		Initial Results		Mortality Adjustment Terms			Adjusted for Mortality	
	Age-Adjusted Rates (2000 US)			Age-Adjusted Rates (2000 US)		Expected	Initial	Registry	Adj Reg	Expected	Interim	
	1998	1997-1998	Inc/Mort	1998-2002	Inc/Mort	Incidence	Percent	1998-2002	Term			2000
Cancer Site	Incidence	Mortality	Ratio	Mortality	Ratio	Rate	Complete	Mort Rate	Term	Mort Rate	Rate	Complete
Oral Cavity and Pharynx	23.92	8.21	2.91	7.15	2.68	22.00	108.70	7.76	0.92	8.08	21.66	110.44
Esophagus	19.61	13.16	1.49	11.40	0.91	12.02	163.15	11.90	0.96	13.05	11.92	164.53
Stomach	18.18	6.55	2.78	12.76	1.39	9.11	199.52	8.58	1.49	7.19	10.00	181.82
Colon and Rectum	72.60	34.05	2.13	33.76	2.14	72.75	99.79	38.37	0.88	33.23	71.00	102.25
Liver	7.94	12.38	0.64	8.30	1.33	16.52	48.10	7.18	1.16	12.76	17.03	46.64
Pancreas	20.72	21.43	0.97	15.69	1.03	22.12	93.64	17.60	0.89	20.97	21.64	95.72
Lung and Bronchus	167.04	123.43	1.35	101.54	1.12	138.70	120.43	130.48	0.78	117.95	132.55	126.02
Melanoma of the Skin												
Prostate												
Urinary Bladder	26.81	3.79	7.08	5.42	3.65	13.82	193.96	6.31	0.86	3.68	13.43	199.59
Kidney and Renal Pelvis	24.15	9.05	2.67	6.28	3.15	28.53	84.64	7.34	0.85	8.79	27.70	87.17
Brain and Other Nervous System	4.78	4.49	1.06	3.23	1.41	6.31	75.74	2.90	1.11	4.59	6.45	74.08
Hodgkin's Disease	3.18	0.67	4.73	0.53	5.41	3.63	87.52	0.54	0.99	0.67	3.62	87.73
Non-Hodgkin's Lymphomas	22.14	10.96	2.02	7.18	2.47	27.10	81.71	10.74	0.67	10.24	25.30	87.52
Multiple Myeloma	9.73	8.17	1.19	8.85	1.49	12.18	79.88	8.62	1.03	8.21	12.24	79.46
Leukemias	17.22	14.30	1.20	8.90	1.39	19.92	86.43	11.61	0.77	13.64	18.99	90.67
Sum of Rates for Black Males	437.99					404.70	108.23				393.53	111.30

Black Females	Kentucky			SEER (11 Regs) and US Mortality		Initial Results		Mortality Adjustment Terms			Adjusted for Mortality	
	Age-Adjusted Rates (2000 US)			Age-Adjusted Rates (2000 US)		Expected	Initial	Registry	Adj Reg	Expected	Interim	
	1998	1997-1998	Inc/Mort	1998-2002	Inc/Mort	Incidence	Percent	1998-2002	Term			2000
Cancer Site	Incidence	Mortality	Ratio	Mortality	Ratio	Rate	Complete	Mort Rate	Term	Mort Rate	Rate	Complete
Oral Cavity and Pharynx	10.60	2.51	4.23	1.90	3.20	8.02	132.27	2.99	0.64	2.33	7.43	142.63
Esophagus	4.22	4.50	0.94	3.16	1.15	5.17	81.63	2.34	1.35	4.82	5.53	76.28
Stomach	6.51	4.91	1.32	6.17	1.55	7.63	85.30	4.78	1.29	5.20	8.07	80.62
Colon and Rectum	82.97	27.61	3.01	24.23	2.33	64.31	129.01	29.64	0.82	26.60	61.97	133.90
Liver	1.31	2.86	0.46	3.08	1.11	3.18	41.15	3.28	0.94	2.83	3.14	41.66
Pancreas	16.54	17.77	0.93	12.59	1.08	19.27	85.80	12.94	0.97	17.67	19.17	86.26
Lung and Bronchus	79.78	68.52	1.16	39.40	1.39	95.54	83.51	59.17	0.67	63.94	89.15	89.49
Melanoma of the Skin												
Breast	123.32	39.09	3.16	34.63	3.45	134.92	91.40	36.81	0.94	38.62	133.32	92.50
Cervix	19.44	6.49	2.99	5.25	2.10	13.66	142.30	4.92	1.07	6.58	13.84	140.42
Corpus and Uterus, NOS	17.02	4.68	3.63	6.94	2.72	12.72	133.74	5.99	1.16	4.83	13.13	129.61
Ovary	14.89	7.81	1.91	7.36	1.34	10.48	141.98	7.64	0.96	7.76	10.41	143.03
Urinary Bladder	3.00	2.22	1.35	2.89	2.66	5.91	50.78	2.92	0.99	2.22	5.89	50.91
Kidney and Renal Pelvis	5.96	3.55	1.68	2.72	3.52	12.49	47.69	3.46	0.79	3.40	11.96	49.81
Brain and Other Nervous System	2.69	5.41	0.50	2.22	1.55	8.35	32.22	3.51	0.63	5.01	7.74	34.77
Hodgkin's Disease	0.00	0.98	0.00	0.33	6.58	6.45	0.00	0.33	0.99	0.98	6.44	0.00
Non-Hodgkin's Lymphomas	9.62	3.78	2.54	4.45	2.63	9.93	96.86	3.88	1.15	3.89	10.22	94.09
Multiple Myeloma	8.73	8.54	1.02	6.51	1.48	12.66	68.96	6.25	1.04	8.62	12.76	68.39
Leukemias	9.43	4.76	1.98	5.38	1.45	6.89	136.91	5.09	1.06	4.82	6.97	135.35
Sum of Rates for Black Females	416.02					437.59	95.07				427.16	97.39

Sum of Rates for Blacks	426.65					421.68	101.18				410.89	104.12
--------------------------------	---------------	--	--	--	--	---------------	---------------	--	--	--	---------------	---------------

**National Program of Cancer Registries-Cancer Surveillance System
SSR1 - Standard Status Report - 2005**

**Estimated Completeness of Case Ascertainment for Whites
Kentucky - 1998**

White Males	Kentucky			SEER (11 Regs) and US Mortality		Initial Results		Mortality Adjustment Terms			Adjusted for Mortality	
	Age-Adjusted Rates (2000 US)			Age-Adjusted Rates (2000 US)		Expected	Initial	Registry	Adj Reg	Expected	Interim	
	1998	1997-1998	Inc/Mort	1998-2002	Inc/Mort	Incidence	Percent	1998-2002	Adjust.	2000	Incidence	Percent
Cancer Site	Incidence	Mortality	Ratio	Mortality	Ratio	Rate	Complete	Mort Rate	Term	Mort Rate	Rate	Complete
Oral Cavity and Pharynx	19.54	5.00	3.91	3.87	3.99	19.96	97.92	4.94	0.78	4.78	19.09	102.34
Esophagus	7.40	6.95	1.06	7.49	1.03	7.15	103.41	7.86	0.95	6.89	7.08	104.38
Stomach	8.65	6.86	1.26	5.60	1.91	13.07	66.15	5.32	1.05	6.93	13.21	65.46
Colon and Rectum	75.89	28.23	2.69	24.25	2.54	71.78	105.72	28.21	0.86	27.44	69.77	108.77
Liver	4.76	5.31	0.90	5.04	1.27	6.72	70.74	5.04	1.00	5.31	6.72	70.73
Pancreas	11.73	11.68	1.00	11.96	1.04	12.19	96.23	11.63	1.03	11.74	12.26	95.68
Lung and Bronchus	135.02	113.70	1.19	75.24	1.02	115.94	116.46	113.62	0.66	106.02	108.11	124.90
Melanoma of the Skin	22.14	4.88	4.53	4.35	5.98	29.19	75.84	4.94	0.88	4.77	28.50	77.67
Prostate												
Urinary Bladder	37.58	7.72	4.87	7.89	5.02	38.78	96.92	8.19	0.96	7.67	38.50	97.62
Kidney and Renal Pelvis	15.76	8.13	1.94	6.19	2.69	21.86	72.10	6.94	0.89	7.96	21.39	73.69
Brain and Other Nervous System	7.71	6.76	1.14	5.94	1.42	9.60	80.31	6.22	0.95	6.70	9.52	81.05
Hodgkin's Disease	3.12	0.68	4.59	0.60	5.37	3.65	85.50	0.67	0.90	0.67	3.57	87.29
Non-Hodgkin's Lymphomas	24.90	12.04	2.07	10.57	2.31	27.83	89.46	10.76	0.98	11.99	27.74	89.77
Multiple Myeloma	6.22	5.09	1.22	4.38	1.51	7.70	80.86	5.11	0.86	4.94	7.47	83.25
Leukemias	12.15	12.03	1.01	10.38	1.62	19.51	62.30	10.66	0.97	11.97	19.40	62.63
Sum of Rates for White Males	392.57					404.92	96.95				392.34	100.06

White Females	Kentucky			SEER (11 Regs) and US Mortality		Initial Results		Mortality Adjustment Terms			Adjusted for Mortality	
	Age-Adjusted Rates (2000 US)			Age-Adjusted Rates (2000 US)		Expected	Initial	Registry	Adj Reg	Expected	Interim	
	1998	1997-1998	Inc/Mort	1998-2002	Inc/Mort	Incidence	Percent	1998-2002	Adjust.	2000	Incidence	Percent
Cancer Site	Incidence	Mortality	Ratio	Mortality	Ratio	Rate	Complete	Mort Rate	Term	Mort Rate	Rate	Complete
Oral Cavity and Pharynx	6.46	1.68	3.83	1.56	4.12	6.93	93.15	1.57	0.99	1.68	6.92	93.28
Esophagus	2.10	1.46	1.44	1.66	1.16	1.68	124.63	1.43	1.16	1.50	1.74	120.71
Stomach	3.97	3.60	1.10	2.78	1.83	6.59	60.22	2.67	1.08	3.66	6.70	59.24
Colon and Rectum	55.98	18.95	2.95	16.87	2.70	51.11	109.53	18.94	0.89	18.54	49.99	111.99
Liver	1.73	2.12	0.82	1.87	1.23	2.62	66.15	2.13	0.88	2.07	2.55	67.79
Pancreas	8.33	8.60	0.97	8.96	1.06	9.13	91.19	8.51	1.05	8.69	9.23	90.22
Lung and Bronchus	69.61	52.01	1.34	41.62	1.22	63.56	109.52	53.56	0.78	49.69	60.72	114.63
Melanoma of the Skin	15.69	1.93	8.11	1.99	8.66	16.74	93.74	2.10	0.95	1.91	16.57	94.72
Breast	129.38	27.27	4.74	25.89	5.45	148.74	86.98	28.51	0.98	27.14	148.05	87.39
Cervix	13.23	3.85	3.43	2.50	3.53	13.61	97.23	3.08	0.81	3.71	13.09	101.03
Corpus and Uterus, NOS	23.71	3.25	7.30	3.87	6.64	21.59	109.83	3.45	1.12	3.33	22.13	107.16
Ovary	15.40	8.25	1.87	9.16	1.61	13.26	116.14	8.68	1.06	8.34	13.40	114.86
Urinary Bladder	10.75	2.03	5.30	2.24	4.35	8.83	121.70	2.48	0.90	1.99	8.66	124.11
Kidney and Renal Pelvis	9.19	2.85	3.22	2.81	2.94	8.40	109.38	3.25	0.86	2.78	8.17	112.42
Brain and Other Nervous System	6.48	4.40	1.47	3.96	1.50	6.61	98.12	3.91	1.01	4.41	6.63	97.84
Hodgkin's Disease	2.37	0.31	7.68	0.40	6.54	2.01	117.54	0.38	1.06	0.31	2.04	116.16
Non-Hodgkin's Lymphomas	17.65	7.53	2.34	6.96	2.42	18.22	96.90	7.18	0.97	7.48	18.11	97.49
Multiple Myeloma	4.68	3.08	1.52	2.90	1.42	4.38	107.01	3.12	0.93	3.04	4.31	108.56
Leukemias	7.82	5.32	1.47	5.99	1.66	8.85	88.35	5.56	1.08	5.40	8.99	87.00
Sum of Rates for White Females	404.52					412.85	97.98				408.01	99.15

Sum of Rates for Whites	398.69					408.98	97.48				400.36	99.59
--------------------------------	---------------	--	--	--	--	---------------	--------------	--	--	--	---------------	--------------

**National Program of Cancer Registries-Cancer Surveillance System
SSR1 - Standard Status Report - 2005**

Kentucky - 1998

Estimated Completeness Summary

Interim Completeness Estimates Adjusted for Reference Mortality					
Whites		Blacks		Race Proportional	
Percent Complete	Population	Percent Complete	Population	Percent Complete	Population
99.59	3,651,883	104.12	298,148	99.93	3,950,031

Final Completeness Estimates Adjusted for Reference Mortality and Duplicate Records			
Total Incident Cases	20245	Adjusted Total Incident Cases	20245
Race Proportional Completeness, Adjusted for Reference Mortality	99.93	Expected Incident Cases	20259
%Unresolved Duplicates*	0.00	Final Completeness Estimates, Adjusted for Reference Mortality and Duplicate Records	99.93

* 0.00 indicates all duplicates are resolved.



2005 - Submission Summary Report (SSR2) National Program of Cancer Registries Cancer Surveillance System

Kentucky



Department of Health and Human Services
Centers for Disease Control and Prevention
Safer · Healthier · People

**National Program of Cancer Registries - Cancer Surveillance System
SSR2 - Submission Summary Report - 2005
Kentucky**

Table 1: Submission Summary

Diagnosis Year	Record Status			
	Records Received	Non-reportable Records	Reportable Records	Invasive Records*
2003	19564	0	19564	18428
2002	22563	0	22563	21074
2001	22950	0	22950	21527
2000	22596	0	22596	21161
1999	21974	0	21974	20734
1998	21335	0	21335	20245
<= 1997**	60931	0	60931	58090
Prior to NPCR Reference Year	0	0	0	0
Total	191913	0	191913	181259

* Invasive records include in situ bladder.

** Includes all submitted records from the NPCR reference year through 1997.

Submission Date: January 31, 2005
 NAACCR Record Version: A
 NPCR Reference Year: 1995
 Years Submitted: 1995-2003

**National Program of Cancer Registries - Cancer Surveillance System
SSR2 - Submission Summary Report - 2005
Kentucky**

Table 2a: Number and Percentage Core Single and Inter-field Errors

Edit Name	2003		2002		2001		2000		1999		1998		Comment
	n	%	n	%	n	%	n	%	n	%	n	%	
Age, Primary Site, Morphology ICDO3 (SEER IF15)	1	0.01	0	0.00	0	0.00	0	0.00	0	0.00	0	0.00	Primary Site and Morphology codes (ICD-O-3) should be consistent with Age of Diagnosis.
Diagnostic Confirm, Seq Num--Central (SEER IF23)	118	0.60	0	0.00	0	0.00	0	0.00	0	0.00	0	0.00	Cases with sequence of >00 should be microscopically confirmed.
Primary Site, Morphology-Type ICDO3 (SEER IF25)	169	0.86	0	0.00	0	0.00	0	0.00	0	0.00	0	0.00	Site/histology combinations are not within the ICD-O-3 SEER Site/Histology Validation list. If verified and correct use over-ride flag "Site/Type".
Seq Num--Central, Prim Site, Morph ICDO3(SEER IF22)	19	0.10	0	0.00	0	0.00	0	0.00	0	0.00	0	0.00	Sequence of >00 should not have a primary site of ill defined or unknown.
Total Records with Errors	303	1.55	0	0.00	0	0.00	0	0.00	0	0.00	0	0.00	
Total Errors	307	-	0	-	0	-	0	-	0	-	0	-	
Total NPCR-Reportable Records	19564	-	22563	-	22950	-	22596	-	21974	-	21335	-	

The percentage of records with core errors is based on NPCR Reportable Records. Individual edits are listed only if the level of error is greater than or equal to 1%.
- Percentage not calculated.

National Program of Cancer Registries - Cancer Surveillance System
SSR2 - Submission Summary Report - 2005
Kentucky

Table 2b: Number and Percentage Advanced Single and Inter-field Errors

Edit Name	2003		2002		2001		2000		1999		1998		Comment
	n	%	n	%	n	%	n	%	n	%	n	%	
Age, Primary Site, Morph ICD03--Adult (SEER)	1	0.01	0	0.00	0	0.00	0	0.00	0	0.00	0	0.00	Adult Age/Site/Hist conflict. (Adult = Age at Diagnosis of 015 and older.)
Date of Last Contact, Date of Diag. (NAACCR IF19)	4	0.02	0	0.00	0	0.00	0	0.00	0	0.00	0	0.00	Date of Last Contact should not precede date of diagnosis.
ICD Revision Number, Cause of Death (SEER IF37)	1	0.01	0	0.00	0	0.00	0	0.00	0	0.00	0	0.00	ICD Revision Number should have valid corresponding Cause of Death code (ICD-9 Revision Number = valid ICD-9 Cause of Death code; ICD-10 Revision Number = ICD-10 Cause of Death code).
RX Summ--Surg Prim Site, Primary Site (SEER IF108)	5	0.03	0	0.00	0	0.00	0	0.00	0	0.00	0	0.00	Conflict among RX Summ--Surg Prim Site, Primary Site, and Histologic Type ICD-O-3. The valid RX Summ--Surg Prim Site codes for each Primary Site are specified in SEER Program Code Manual, 3rd Edition, Revision 1.
Type of Report Srce(DC/AO), Date of Dx (SEER IF02)	1	0.01	0	0.00	0	0.00	0	0.00	0	0.00	0	0.00	If Type of Reporting Source = 6 (autopsy only) or 7 (death certificate only), then Date of Diagnosis should be the date of death.
Total Records with Errors	11	0.06	0	0.00	0	0.00	0	0.00	0	0.00	0	0.00	
Total Errors	12	-	0	-	0	-	0	-	0	-	0	-	
Total NPCR-Reportable Records	19564	-	22563	-	22950	-	22596	-	21974	-	21335	-	

The percentage of records with advanced errors is based on NPCR Reportable Records. Individual edits are listed only if the level of error is greater than or equal to 1%.
 - Percentage not calculated.

**National Program of Cancer Registries - Cancer Surveillance System
 SSR2 - Submission Summary Report - 2005
 Kentucky**

Table 2c: Inter-Record Edit Errors by Error Type Among Individuals with Multiple Primaries*

Edit Name**	Number	Percentage	Comment
Type Among Individuals with Multiple Primaries*, Diagnosis Years (1995-2002)		0.00	

All Inter-Record edit errors that occur within a record are listed individually.

* N = 9440 represents the number of patients with two or more diagnoses of primary cancer.

** Inter-Record edit errors are not used to evaluate program standard.

*** Categories of Inter-Record errors are not mutually exclusive. The percentage of individuals with Inter-Record errors is the number of individuals with at least one error divided by the total number of individuals with multiple primaries.

**National Program of Cancer Registries - Cancer Surveillance System
SSR2 - Submission Summary Report - 2005
Kentucky**

Table 3: Percentage of Over-Ride Flagged Fields -- Grouped by Edit Name and Diagnosis Year

OVER-RIDE FLAG NAME													
	Age/Site/ Morph [1990]	SeqNo/ DxConf [2000]	Site/Lat/ SeqNo [2010]	Site/Type [2030]	Histology [2040]			Report Source [2050]	Ill-define Site [2060]	Leuk, Lymphoma [2070]	Site/ Behavior [2071]	Site/Lat/ Morph [2074]	
ASSOCIATED EDIT NAME													
Diagnosis Year	Age, Primary Site, Morphology (NAACCR IF15)	Diagnostic Confirm, Seq Num--Central (SEER IF23)	Site/Histology/ Laterality/ Sequence Number (IR09)	Primary Site, Morphology- Type Check (SEER IF25)	1 = Morphology-- Type&Behavior (SEER MORPH)	2 = Diagnostic Confirmation, Behavior Code (SEER IF31)	3 = Both 1 and 2 Apply	Type of Report Srce(DC),Seq Num--Central (SEER IF04)	Seq Num-- Central, Primary Site, Morph (SEER IF22)	Diagnostic Confirmation, Histologic Type (SEER IF48)	Primary Site, Behavior Code (SEER IF39)	Laterality, Primary Site, Morphology (SEER IF42)	Percentage of Records with Over- Ride Flags*
2003	0.10	0.08	0.03	0.17	0.01	0.02	0.00	0.00	0.24	0.01	0.00	0.00	2.02
2002	0.10	0.70	0.03	0.87	0.01	0.02	0.00	0.05	0.36	0.04	0.00	0.00	2.02
2001	0.10	0.63	0.04	0.88	0.00	0.00	0.01	0.03	0.34	0.01	0.00	0.00	1.97
2000	0.08	0.57	0.04	0.72	0.01	0.00	0.00	0.01	0.34	0.01	0.00	0.00	1.73
1999	0.09	0.61	0.06	0.60	0.00	0.00	0.00	0.03	0.33	0.00	0.00	0.00	1.68
1998	0.11	0.75	0.04	0.77	0.01	0.00	0.00	0.07	0.38	0.01	0.00	0.00	2.04
SEER OVER-RIDE FLAG QUALITY MEASURES**													
	0.19	0.73	0.23	1.84	0.08	0.00	0.00	0.14	0.51	0.07	0.01	0.00	

The number of records used for this table are from the NPCR Reportable Records in Table 1.

* To determine the percent of records with over-ride flags, multiple flags within a record are counted as one record regardless of the number of flags.

** Surveillance, Epidemiology, and End Results (SEER) Program (www.seer.cancer.gov) SEER*Stat Database: Incidence - SEER 11 Regs + AK Public-Use, Nov 2003 Sub (1973-2001 varying), National Cancer Institute, DCCPS, Surveillance Research Program, Cancer Statistics Branch, released April 2004, based on the November 2003 submission.

**National Program of Cancer Registries - Cancer Surveillance System
SSR2 - Submission Summary Report - 2005
Kentucky**

Table 4: Average Percentage of Over-Ride Flags for All 2005 NPCR Data Submissions*

OVER-RIDE FLAG NAME														
DX Year	Statistic	Age/Site/ Morph	SeqNo/ DxConf	Site/Lat/ SeqNo	Site/Type	Histology			Report Source	Ill-define Site	Leuk, Lymphoma	Site/ Behavior	Site/Lat/ Morph	Percentage of Total Records with Over-Ride Flags
						1 = SEER MORPH	2 = SEER IF31	3 = Both 1 and 2						
Item Number														Percentage of Total Records with Over-Ride Flags
[1990]	[2000]	[2010]	[2030]	[2040]			[2050]	[2060]	[2070]	[2071]	[2074]			
2003	Average	0.29	0.52	0.09	1.02	0.11	0.01	0.12	0.05	0.36	0.04	0.04	0.04	2.26
	Range	0.00-5.19	0.00-2.04	0.00-0.66	0.00-2.68	0.00-0.65	0.00-0.05	0.00-1.78	0.00-1.38	0.00-1.87	0.00-0.38	0.00-0.39	0.00-0.45	0.04-9.32
2002	Average	0.51	0.65	0.11	1.09	0.12	0.00	0.02	0.09	0.44	0.04	0.04	0.04	2.70
	Range	0.05-15.98	0.16-2.87	0.00-1.69	0.45-3.02	0.00-1.10	0.00-0.06	0.00-0.20	0.00-0.73	0.09-2.36	0.00-0.49	0.00-0.50	0.00-0.55	0.91-21.17
2001	Average	0.53	0.66	0.11	1.34	0.28	0.00	0.01	0.10	0.50	0.05	0.04	0.03	3.01
	Range	0.08-14.90	0.07-3.03	0.00-1.10	0.24-4.79	0.00-2.04	0.00-0.01	0.00-0.19	0.00-1.08	0.10-2.74	0.00-0.51	0.00-0.54	0.00-0.58	0.53-21.19
2000	Average	0.49	0.90	0.17	1.11	0.19	0.00	0.01	0.15	0.45	0.05	0.04	0.02	2.79
	Range	0.02-13.04	0.05-7.89	0.00-1.08	0.28-2.90	0.00-2.20	0.00-0.03	0.00-0.13	0.00-1.02	0.03-1.18	0.00-0.43	0.00-0.37	0.00-0.33	0.73-17.09
1999	Average	0.59	0.96	0.23	1.10	0.26	0.00	0.00	0.25	0.57	0.23	0.02	0.02	2.96
	Range	0.00-11.01	0.05-6.24	0.00-5.08	0.29-3.45	0.00-3.01	0.00-0.05	0.00-0.03	0.00-3.82	0.05-3.87	0.00-3.45	0.00-0.31	0.00-0.10	0.73-14.95
1998	Average	0.64	1.30	0.13	1.42	0.33	0.00	0.00	0.41	0.55	0.44	0.05	0.02	3.25
	Range	0.03-8.41	0.06-10.82	0.00-0.84	0.15-14.67	0.00-7.33	0.00-0.05	0.00-0.03	0.00-6.99	0.04-3.96	0.00-13.80	0.00-0.37	0.00-0.22	0.87-15.81

To calculate the Total Records with Over-Ride Flags, multiple flags within a record are counted as one record. Only 12 month data and most recent 5 years of data are displayed.

* Average is unweighted for all participating NPCR registries.



**2005 – Data Quality Indicator Report (DQI)
National Program of Cancer Registries
Cancer Surveillance System**

Kentucky



**Department of Health and Human Services
Centers for Disease Control and Prevention
Safer · Healthier · People**

National Program of Cancer Registries - Cancer Surveillance System
DQI - Data Quality Indicator Report - 2005
Kentucky

Table 1: Core Cancer Surveillance Data

Data Quality Indicator* \ Diagnosis Year	1998	1999	2000	2001	2002	NPCR (ave/range)	SEER (ave/range)**
						1998-2002	1998-2001
Patient Socio-demographic							
Birthplace [250]							
Not in US but NOS (998)	0.83	1.78	2.80	0.37	0.40	0.28(0.00-5.30)	0.26(0.00-2.84)
Unknown (999, blank)	50.85	52.28	52.97	54.91	62.32	60.57(27.44-100.00)	45.22(14.87-69.63)
Birthdate [240]							
Year (<1850 or >2003, blank)	0.00	0.00	0.00	0.00	0.00	0.01(0.00-0.13)	0.00(0.00-0.00)
Race and Ethnicity [190]							
Spanish/Hispanic Origin (9, blank)	4.08	3.92	3.80	4.39	5.69	11.21(0.00-100.00)	0.94(0.00-3.07)
Primary Payer at Diagnosis [630]							
Unknown (99, blank)	10.66	11.49	10.16	9.71	9.22	76.75(5.21-100.00)	N/A
Tumor Characteristics							
Date of Diagnosis [390]							
Month (99, blank)	0.00	0.00	0.00	0.00	0.00	0.48(0.00-3.19)	N/A
Topography [400]							
Other/III Defined Sites (C76.0 - C76.8)	0.05	0.05	0.07	0.04	0.04	0.08(0.00-0.24)	0.07(0.00-0.33)
Unknown Primary Site (C80.9)	2.54	2.80	2.70	2.78	2.46	2.43(0.98-6.83)	2.06(1.11-2.91)
Morphology [420]							
Non-specific Neoplasms (8000 - 8001)	3.81	4.05	3.42	3.14	2.60	3.70(0.93-10.92)	1.97(0.77-4.32)
Non-specific Neoplasms (8002 - 8005)	0.01	0.02	0.01	0.01	0.00	0.02(0.00-0.14)	0.02(0.00-0.06)
Diagnostic Confirmation [490] excludes DCO							
Not Microscopically Confirmed (5, 6, 7, 8)	4.40	4.24	4.39	4.66	4.74	3.45(0.00-9.76)	3.28(2.31-4.79)
Unknown (9) and Blank	2.00	2.66	2.34	1.92	1.15	1.26(0.00-7.33)	0.58(0.12-1.30)
Sequence Number--Central [380]							
Two or more (01 - 35)	19.09	18.41	18.11	17.58	17.20	18.37(8.61-78.41)	19.58(14.91-23.20)
Unspecified (99)	0.00	0.00	0.00	0.00	0.00	0.00(0.00-0.25)	0.00(0.00-0.01)
Reportable Cancers							
VIN III, VAIN III, AIN III	0.00	0.00	0.00	0.00	0.00	0.00(0.00-0.00)	0.00(0.00-0.00)
Tumor Miscellaneous							
Grade [440] (9, blank) excludes DCO, C80.9	31.79	32.02	31.81	32.74	33.10	32.32(22.12-48.11)	30.95(25.59-35.07)
Laterality [410] paired organs only							
Only 1 side and side NOS (3)	0.14	0.13	0.11	0.05	0.12	0.38(0.00-3.79)	0.34(0.00-1.14)
Unknown (9, blank)	2.68	2.92	2.66	2.36	2.02	2.61(0.00-7.69)	1.71(0.78-3.26)

* For quality review only, no NPCR standards at this time. DQI expressed as percent of all invasive cancers and in situ bladder cancers, except as noted.

** SEER*Stat Database: Incidence - SEER 11 Regs Public-Use, released April 2004. Some percentages are based on recoded values.

NAACCR data item numbers are noted with square brackets "+"["] and codes with parentheses "()."

N/A = not applicable for the diagnosis year.

National Program of Cancer Registries - Cancer Surveillance System
DQI - Data Quality Indicator Report - 2005
Kentucky

Table 2: Advanced Cancer Surveillance Data

Data Quality Indicator* \ Diagnosis Year	1998	1999	2000	2001	2002	NPCR (ave/range)	SEER (ave/range)**
						1998-2002	1998-2001
Substate Geography							
Census Tract [130]							
Not Tracted (000000)	0.00	0.00	0.00	0.00	0.00	4.26(0.00-100.00)	N/A
Tracted, but Not Available (999999)	2.34	2.18	1.53	1.63	0.82	1.22(0.00-66.15)	N/A
Blank	0.00	0.00	0.00	0.00	0.00	49.60(0.00-100.00)	N/A
Invalid Codes	0.34	0.32	0.27	0.30	0.37	0.17(0.00-9.19)	N/A
Census Tr Cert [365]							
Blank	0.00	0.00	0.00	0.00	0.00	56.32(0.00-100.00)	N/A
Unknown (9)	2.34	2.18	1.53	1.63	0.82	2.63(0.00-100.00)	N/A
County at Diagnosis [90]							
Blank	0.00	0.00	0.00	0.00	0.00	0.00(0.00-0.03)	0.00(0.00-0.00)
Unknown (999)	0.00	0.00	0.00	0.00	0.00	0.07(0.00-1.64)	0.01(0.00-0.08)
Out of State Resident (998)	0.00	0.00	0.00	0.00	0.00	0.02(0.00-6.07)	0.00(0.00-0.00)
Valid County Recode (000)	0.00	0.00	0.00	0.00	0.00	3.68(0.00-99.92)	0.00(0.00-0.00)
First Course Treatment							
RX Summ Surg Prim Site [1290]							
Blank	0.00	0.00	0.00	0.00	0.00	58.55(0.00-100.00)	0.00(0.00-0.00)
Surgery, NOS (90)	0.44	0.33	0.52	0.43	0.48	0.37(0.00-4.46)	0.27(0.00-1.02)
Unknown (99)	35.82	31.44	11.78	10.09	9.91	1.24(0.00-35.82)	1.18(0.11-3.96)
RX Summ Scope Reg LN Sur [1292]							
Blank	0.00	0.00	0.00	0.00	0.00	74.15(0.00-100.00)	0.00(0.00-0.00)
Unknown (9)	43.74	40.47	22.86	21.59	21.48	7.65(0.00-97.65)	5.07(0.38-13.66)
RX Summ Surg Oth Reg/Dis [1294]							
Blank	0.00	0.00	0.00	0.00	0.00	74.15(0.00-100.00)	0.00(0.00-0.00)
Unknown (9)	37.35	33.09	13.35	11.25	10.91	5.33(0.00-96.74)	1.33(0.11-4.04)
Vital Status and Cause of Death							
Vital Status [1760] (blank)							
Blank	0.00	0.00	0.00	0.00	0.00	2.26(0.00-100.00)	0.00(0.00-0.00)
Date of Last Contact [1750] decedents only							
Year (invalid)	0.00	0.00	0.00	0.00	0.00	0.02(0.00-0.79)	N/A
Year (unknown or missing year)	0.00	0.00	0.00	0.00	0.00	2.31(0.00-95.44)	N/A
Cause of Death [1910]							
Blank	0.00	0.00	0.00	0.00	0.00	19.61(0.00-100.00)	N/A
Death Cert. Avail., But No COD (7797)	0.00	0.01	0.00	0.00	0.00	1.42(0.00-41.44)	N/A
Death Certificate Not Available (7777)	3.48	4.09	3.59	4.37	6.22	4.50(0.00-51.18)	N/A

* For quality review only, no NPCR standards at this time. DQI expressed as percent of all invasive cancers and in situ bladder cancers, except as noted.

** SEER*Stat Database: Incidence - SEER 11 Regs Public-Use, released April 2004. Some percentages are based on recorded values.

NAACCR data item numbers are noted with square brackets "+"[" "] and codes with parentheses "()."

N/A = not applicable for the diagnosis year.