

Data Collection Flow: Project Coordinators/Researchers Version

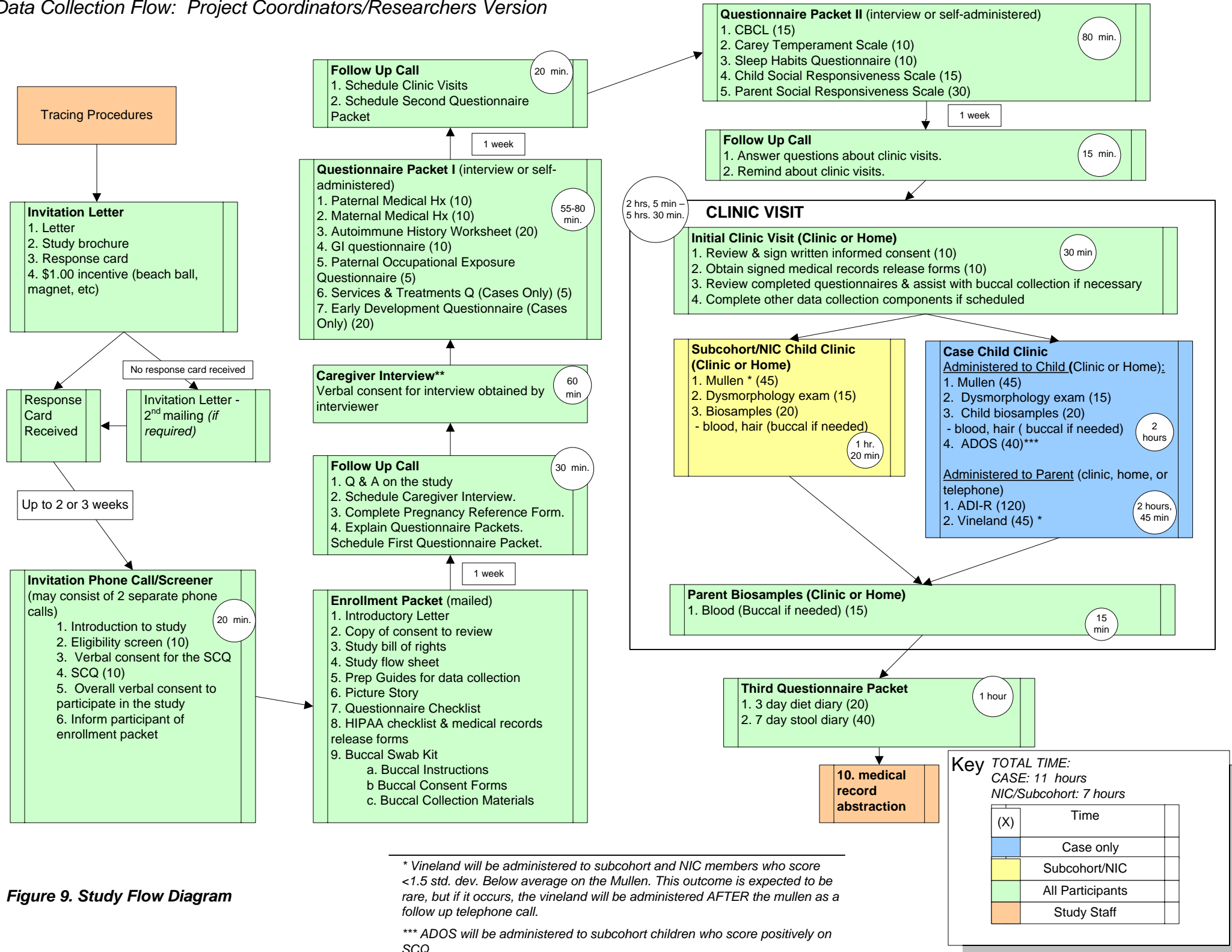


Figure 9. Study Flow Diagram

\* Vineland will be administered to subcohort and NIC members who score <1.5 std. dev. Below average on the Mullen. This outcome is expected to be rare, but if it occurs, the vineland will be administered AFTER the mullen as a follow up telephone call.

\*\*\* ADOS will be administered to subcohort children who score positively on SCQ