

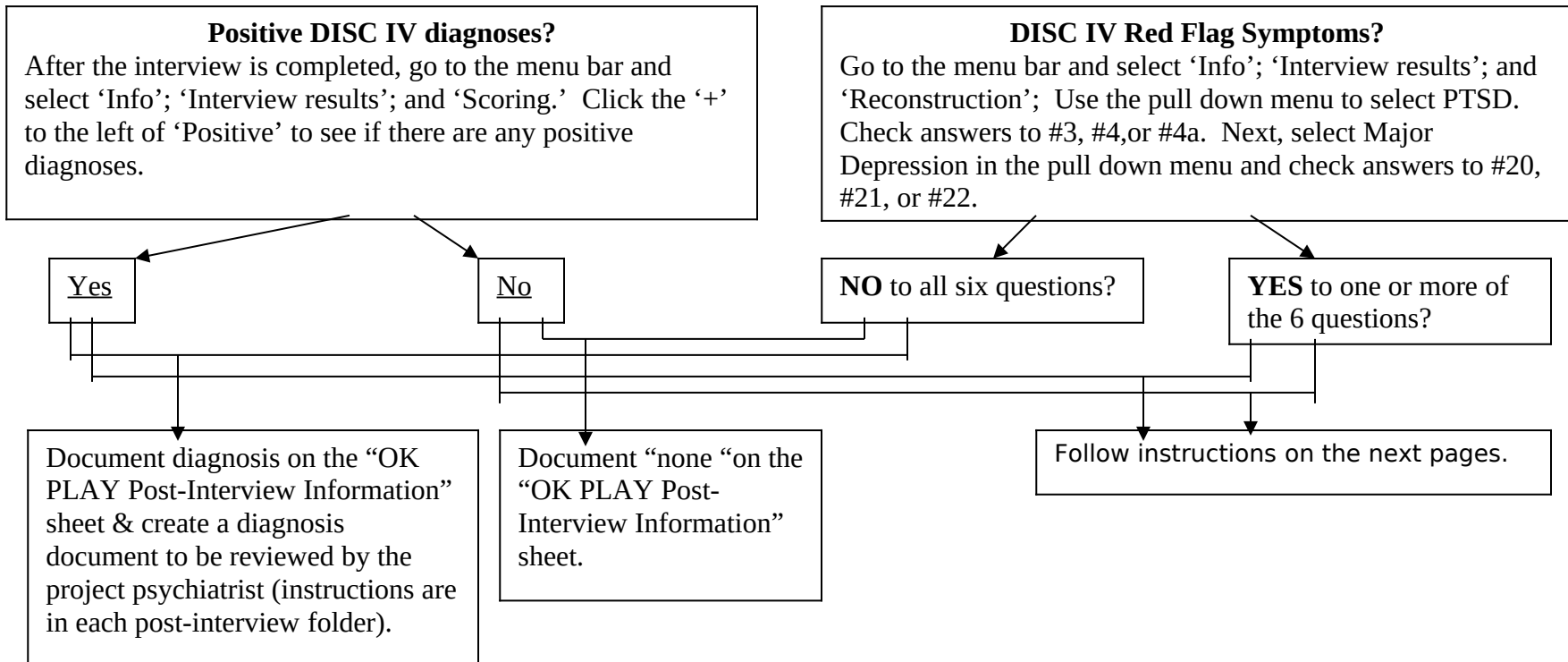
## ***Oklahoma Project to Learn about ADHD in Youth (OK PLAY)***

### **PROCEDURES TO BE FOLLOWED FOR REPORTABLE EVENTS:**

1. Assessment staff will process DISC and check for 1) diagnosis 2) reportable injury and 3) suicidal thoughts. If any of the above three are present, assessment staff will follow triage protocol as outlined in the triage protocol for VOICE DISC IV document.
2. If participants volunteer information about self harm or abuse during the course of the other assessments, in particular, the injury section of the Health Risk Behavior Survey, assessment staff will also follow the triage protocol. Detailed steps are contained in the triage protocol document.
3. For any case that requires immediate report to a mental health provider or child protective services, assessment staff will immediately notify principal investigators.
4. Site principal investigators will send an email report to CDC principal investigators within 24 hours for serious issues requiring immediate report, and within 2 weeks for other less serious issues.

## OK Play Triage Protocol for VOICE DISC IV

The consent form states that the assessment process might uncover emotional or behavioral symptoms/diagnoses. At the end of the interview, explain to the parent that the team psychiatrist will review the interview results and a letter of findings (if there are any) will be sent to them within three weeks. The family and youth may already have a psychiatrist or other mental health professional treating the youth. Staff should state they are not clinicians and should NOT discuss findings with the parent and youth. Staff should look at the parent completed history questionnaire and/or go to the DISC IV reconstruction report to see the youth report of service use. The following protocol outlines how project staff will handle certain situations:



# OK Play Triage Protocol for PTSD Module

## POST TRAUMATIC STRESS DISORDER MODULE Youth Reports Yes to question(s) #3, #4 and/or 4a (see full questions at bottom of page)

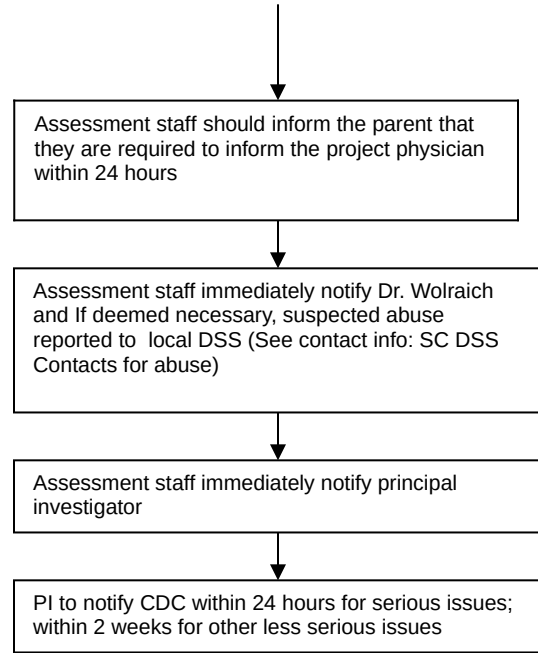
Determine need to report;  
Follow steps listed right:

If abuse has already  
been documented,  
END HERE

Assessment staff instructions to follow when youth reports yes to one or more questions:

1. Show the child the reconstruction report and read the yes question(s) out loud.
2. Ask the youth "Do you remember how you answered this question?"
3. If they understand that they answered yes, probe "Could you tell me a little more about why you answered yes?"
4. Ask further open ended questions to gain sense of what happened to determine if it is a reportable situation.
5. If you feel that the information shared was a possible reportable situation; follow flow diagram

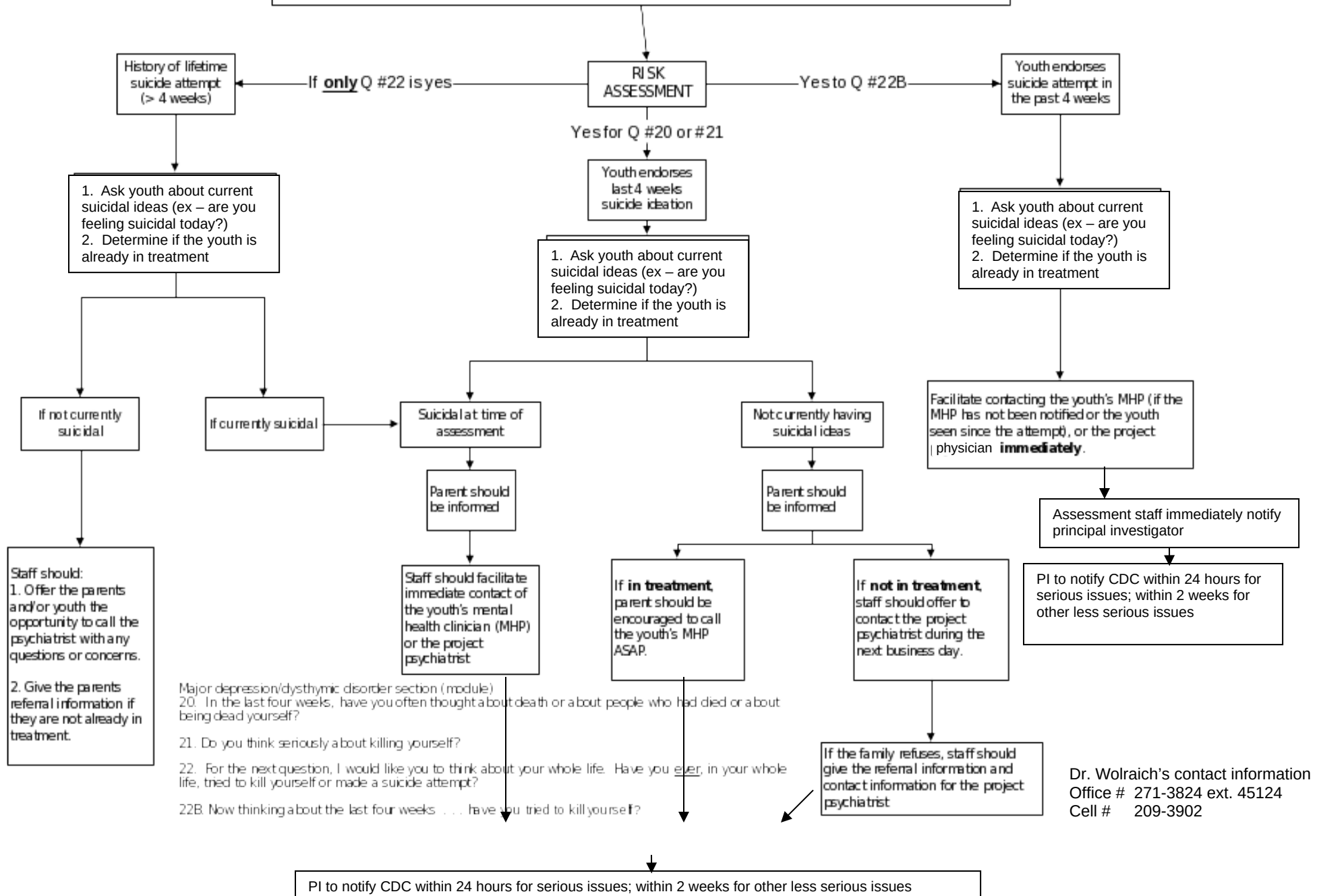
Post Tramatic Stress Disorder Section (module)  
Have you ever been attacked by somebody...or  
badly beaten?  
Have you ever been very upset by someone  
forcing you to do something sexual that you didn't  
want to do?  
a. Have you ever been raped?



# OK Play Triage Protocol for Major Depression/Dysthymic Disorder Module

Assessment staff immediately notify principal investigator

## OK PLAY TRIAGE PROTOCOL FOR MAJOR DEPRESSION/DYSTHYMIC DISORDER MODULE Youth Reports Yes to Question(s) #20, #21, #22, and/ or #22B (see bottom of page for full questions)



**OK Play Triage Protocol for HRBS**

**Health Risk Behavior Survey  
Report of Injuries**  
(see full questions at bottom of page)

If the number of injuries reported is suspicious, or the respondent, child or parent, volunteers information that the injury was inflicted by another person, determine if it was a possible reportable situation. Follow steps listed right:

Talk to parent and youth about possible need to report

If abuse has already been documented, END HERE

If injury is reportable but has not been reported, staff should inform family of the youth's report on the HRB and the need to report that possible abuse has occurred

1. Show the child the HRB form and read the question(s) out loud.
2. Ask the youth "Do you remember how you answered this question?".
3. If they understand that they answered yes, probe "Could you tell me a little more about how you were/your child was injured?".
4. Ask further open ended questions to gain sense of what happened to determine if it is a reportable situation.
5. If you feel that the information shared was a possible reportable situation, continue to follow the flow diagram as outlined left.

**Injury Section**

1. How many times were you injured in the past 12 months?
2. In the past twelve months, have you had any of the following injuries? (Check all that apply).
  - A. An injury related to playing or having fun (for example, while playing on a bicycle or skateboard)?
  - B. A burn or scald?
  - C. A broken bone?
  - D. An animal bite
  - E. A poison related injury?
  - F. A cut or pierce that required stitches?
  - G. An injury caused by something like a tool or machine?

If the family becomes upset or concerned, the project physician should be called immediately

To report suspected abuse contact local DSS (see contact info: OK DSS Contacts for Abuse)

Assessment staff immediately notify principal investigator

PI to notify CDC within 24 hours for serious issues; within 2 weeks for other less serious issues

Dr. Wolraich's contact information  
Office # 271-3824 ext. 45124  
Cell # 209-3902

**Health Risk Behavior Survey  
Report of Self Harm**

in the youth report, asks question #22  
(Have you ever tried to intentionally hurt yourself?)

1. Show the child the HRB form and read the question(s) out loud.
2. Ask the youth "Do you remember how you answered this question?"
3. If they understand that they answered yes, ask something like "Could you tell me a little more about what you told me when you answered the question?"
4. Ask further open ended questions to gain sense of what happened to determine if the self harm was potentially suicidal in nature.

If the child volunteers information about the nature of the self-harm that indicates a potential suicide attempt, follow the steps outlined on the Major Depression/Dysthymic Module for "If only Q#22 is yes"

Dr. Wolraich's contact information  
Office # 271-3824 ext. 45124  
Cell # 209-3902

**OK Play Triage Protocol for Parents'  
Questionnaire**

**Parents' Questionnaire**

If the parent reports "Yes" to questions #1-#6:

Staff should:

1. Show the parent the Parents' Questionnaire and point out the question(s) that were answered "Yes."
2. Ask the parent if they have any concern(s) about the specific mental health issue(s) and offer the parents referral information if they are not already in treatment. For example, "Are you feeling concerned about "Feeling generally anxious for 6 months or more?" (Question #2b) And, "Would you be interested in receiving a referral sheet which contains several options for where you may go for help?"
3. Offer the parents the opportunity to call the project physician with any questions or concerns.

Dr. Wolraich's contact information  
Office # 271-3824 ext. 45124  
Cell # 209-3902

Assessment staff will notify project physician if the parent discusses any concerns with mental health issues or asks for referrals.