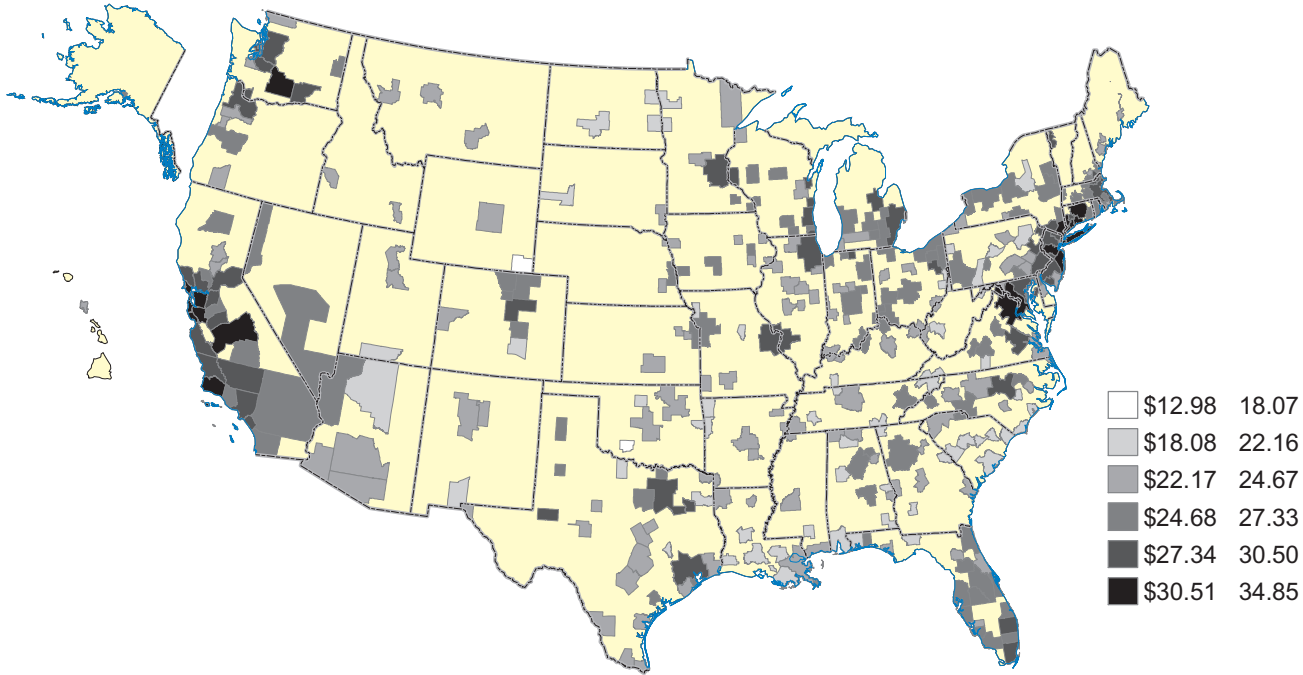


## Wages of Accountants and Auditors in Metropolitan Areas



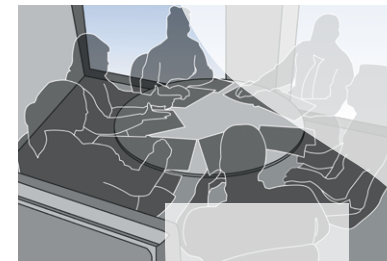
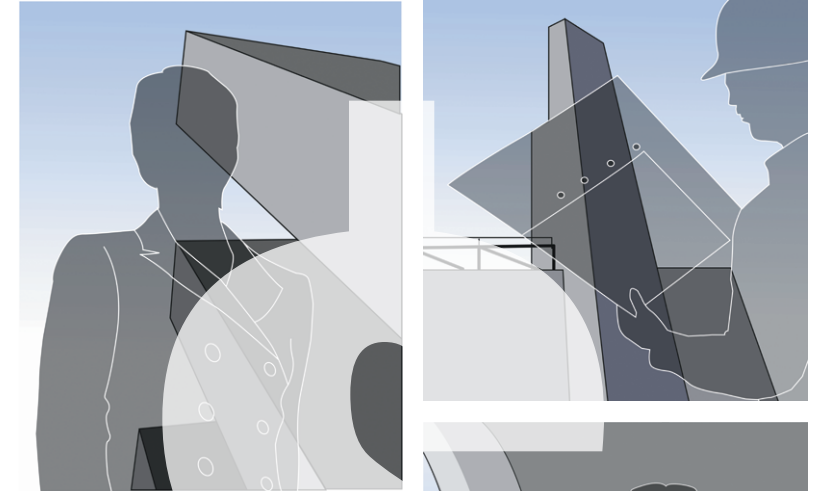
### Employment and wages for healthcare support occupations, Illinois, May 2004

| Occupation                               | Employment | Mean Hourly Wage | Mean Annual Wage |
|--|------------|------------------|------------------|
| <b>Healthcare Support Occupations</b>    | 124,760    | \$11.09          | \$23,060         |
| Home Health Aides                        | 17,330     | 9.44             | 19630            |
| Nursing Aides, Orderlies, and Attendants | 53,950     | 9.90             | 20580            |
| Psychiatric Aides                        | 780        | 11.04            | 22970            |
| Occupational Therapist Assistants        | 940        | 18.14            | 37730            |
| Physical Therapist Assistants            | 2,700      | 17.81            | 37050            |
| Physical Therapist Aides                 | 2,020      | 12.17            | 25310            |
| Massage Therapists                       | 1,570      | 19.46            | 40480            |
| Dental Assistants                        | 13,940     | 12.13            | 25220            |
| Medical Assistants                       | 10,230     | 13.45            | 27980            |
| Medical Equipment Preparers              | 1,180      | 11.99            | 24950            |
| Medical Transcriptionists                | 3,170      | 13.61            | 28310            |
| Pharmacy Aides                           | 3,000      | 11.02            | 22910            |
| Healthcare Support Workers, All Other    | 10,430     | 12.25            | 25490            |

**Good** decisions depend on good information...

...**Good** information depends on good survey response.

## Occupational Employment Statistics (OES)



*Helping one another achieve our goals*

Your State workforce agency and the U.S. Bureau of Labor Statistics