

***Caution: DRAFT FORM***

This is an advance proof copy of an IRS tax form. It is subject to change and OMB approval before it is officially released. You can check the scheduled release date on our web site ([www.irs.gov](http://www.irs.gov)).

If you have any comments on this draft form, you can submit them to us on our web site. Include the word DRAFT in your response. You may make comments anonymously, or you may include your name and e-mail address or phone number. We will be unable to respond to all comments due to the high volume we receive. However, we will carefully consider each suggestion. So that we can properly consider your comments, please send them to us within 30 days from the date the draft was posted.

# Employee Business Expenses

▶ See separate instructions.

▶ Attach to Form 1040 or Form 1040NR.

Your name	Occupation in which you incurred expenses	Social security number
-----------	---	------------------------

## Part I Employee Business Expenses and Reimbursements

	Column A Other Than Meals and Entertainment	Column B Meals and Entertainment
<b>Step 1 Enter Your Expenses</b>		
1 Vehicle expense from line 22 or line 29. (Rural mail carriers: See instructions.) . . . . .	1	
2 Parking fees, tolls, and transportation, including train, bus, etc., that <b>did not</b> involve overnight travel or commuting to and from work . . . . .	2	
3 Travel expense while away from home overnight, including lodging, airplane, car rental, etc. <b>Do not</b> include meals and entertainment . . . . .	3	
4 Business expenses not included on lines 1 through 3. <b>Do not</b> include meals and entertainment. . . . .	4	
5 Meals and entertainment expenses (see instructions) . . . . .	5	
6 <b>Total expenses.</b> In Column A, add lines 1 through 4 and enter the result. In Column B, enter the amount from line 5 . . . . .	6	

**Note:** If you were not reimbursed for any expenses in Step 1, skip line 7 and enter the amount from line 6 on line 8.

### Step 2 Enter Reimbursements Received From Your Employer for Expenses Listed in Step 1

7 Enter reimbursements received from your employer that were <b>not</b> reported to you in box 1 of Form W-2. Include any reimbursements reported under code "L" in box 12 of your Form W-2 (see instructions) . . . . .	7	
--	---	--

### Step 3 Figure Expenses To Deduct on Schedule A (Form 1040)

8 Subtract line 7 from line 6. If zero or less, enter -0-. However, if line 7 is greater than line 6 in Column A, report the excess as income on Form 1040, line 7 (or on Form 1040NR, line 8) . . . . .	8	
<b>Note:</b> If <b>both columns</b> of line 8 are zero, you cannot deduct employee business expenses. Stop here and attach Form 2106 to your return.		
9 In Column A, enter the amount from line 8. In Column B, multiply line 8 by 50% (.50). (Employees subject to Department of Transportation (DOT) hours of service limits: Multiply meal expenses incurred while away from home on business by 75% (.75) instead of 50%. For details, see instructions.) . . . . .	9	
10 Add the amounts on line 9 of both columns and enter the total here. <b>Also, enter the total on Schedule A (Form 1040), line 20</b> (or on Schedule A (Form 1040NR), line 9). (Reservists, qualified performing artists, fee-basis state or local government officials, and individuals with disabilities: See the instructions for special rules on where to enter the total.) . . . . . ▶	10	

**Part II Vehicle Expenses**

**Section A—General Information** (You must complete this section if you are claiming vehicle expenses.)

		(a) Vehicle 1	(b) Vehicle 2
<b>11</b>	Enter the date the vehicle was placed in service . . . . .	<b>11</b> / /	/ /
<b>12</b>	Total miles the vehicle was driven during 2006 . . . . .	<b>12</b> miles	miles
<b>13</b>	Business miles included on line 12 . . . . .	<b>13</b> miles	miles
<b>14</b>	Percent of business use. Divide line 13 by line 12 . . . . .	<b>14</b> %	%
<b>15</b>	Average daily roundtrip commuting distance . . . . .	<b>15</b> miles	miles
<b>16</b>	Commuting miles included on line 12 . . . . .	<b>16</b> miles	miles
<b>17</b>	Other miles. Add lines 13 and 16 and subtract the total from line 12. . . . .	<b>17</b> miles	miles
<b>18</b>	Do you (or your spouse) have another vehicle available for personal use? . . . . .	<input type="checkbox"/> Yes	<input type="checkbox"/> No
<b>19</b>	Was your vehicle available for personal use during off-duty hours? . . . . .	<input type="checkbox"/> Yes	<input type="checkbox"/> No
<b>20</b>	Do you have evidence to support your deduction? . . . . .	<input type="checkbox"/> Yes	<input type="checkbox"/> No
<b>21</b>	If "Yes," is the evidence written? . . . . .	<input type="checkbox"/> Yes	<input type="checkbox"/> No

**Section B—Standard Mileage Rate** (See the instructions for Part II to find out whether to complete this section or Section C.)

<b>22</b>	Multiply line 13 by 44.5¢ (.445) . . . . .	<b>22</b>	
-----------	--	-----------	--

**Section C—Actual Expenses**

		(a) Vehicle 1	(b) Vehicle 2
<b>23</b>	Gasoline, oil, repairs, vehicle insurance, etc. . . . .	<b>23</b>	
<b>24a</b>	Vehicle rentals . . . . .	<b>24a</b>	
<b>b</b>	Inclusion amount (see instructions) . . . . .	<b>24b</b>	
<b>c</b>	Subtract line 24b from line 24a . . . . .	<b>24c</b>	
<b>25</b>	Value of employer-provided vehicle (applies only if 100% of annual lease value was included on Form W-2—see instructions) . . . . .	<b>25</b>	
<b>26</b>	Add lines 23, 24c, and 25 . . . . .	<b>26</b>	
<b>27</b>	Multiply line 26 by the percentage on line 14 . . . . .	<b>27</b>	
<b>28</b>	Depreciation (see instructions) . . . . .	<b>28</b>	
<b>29</b>	Add lines 27 and 28. Enter total here and on line 1. . . . .	<b>29</b>	

**Section D—Depreciation of Vehicles** (Use this section only if you owned the vehicle and are completing Section C for the vehicle.)

		(a) Vehicle 1	(b) Vehicle 2
<b>30</b>	Enter cost or other basis (see instructions) . . . . .	<b>30</b>	
<b>31</b>	Enter section 179 deduction (see instructions) . . . . .	<b>31</b>	
<b>32</b>	Multiply line 30 by line 14 (see instructions if you claimed the section 179 deduction or special allowance) . . . . .	<b>32</b>	
<b>33</b>	Enter depreciation method and percentage (see instructions) . . . . .	<b>33</b>	
<b>34</b>	Multiply line 32 by the percentage on line 33 (see instructions) . . . . .	<b>34</b>	
<b>35</b>	Add lines 31 and 34 . . . . .	<b>35</b>	
<b>36</b>	Enter the applicable limit explained in the line 36 instructions . . . . .	<b>36</b>	
<b>37</b>	Multiply line 36 by the percentage on line 14 . . . . .	<b>37</b>	
<b>38</b>	Enter the <b>smaller</b> of line 35 or line 37. If you skipped lines 36 and 37, enter the amount from line 35. Also enter this amount on line 28 above . . . . .	<b>38</b>	



## Instructions for Form 2106

### Employee Business Expenses

Section references are to the Internal Revenue Code.

## General Instructions

### What's New

**Standard mileage rate.** For 2005, the standard mileage rate for each mile of business use is:

- 40.5 cents per mile for the period January 1 through August 31, 2005, and
- 48.5 cents per mile for the period September 1 through December 31, 2005.

**Limit on depreciation and the section 179 deduction.** The first-year limit on depreciation and the section 179 deduction for most vehicles has decreased to \$2,960. For trucks and vans, the first-year

limit has decreased to \$3,260. For more details, see pages 7 and 8.

### Purpose of Form

Use Form 2106 if you are an employee deducting ordinary and necessary expenses for your job. See the flowchart below to find out if you must file this form.

An ordinary expense is one that is common and accepted in your field of trade, business, or profession. A necessary expense is one that is helpful and appropriate for your business. An expense does not have to be required to be considered necessary.

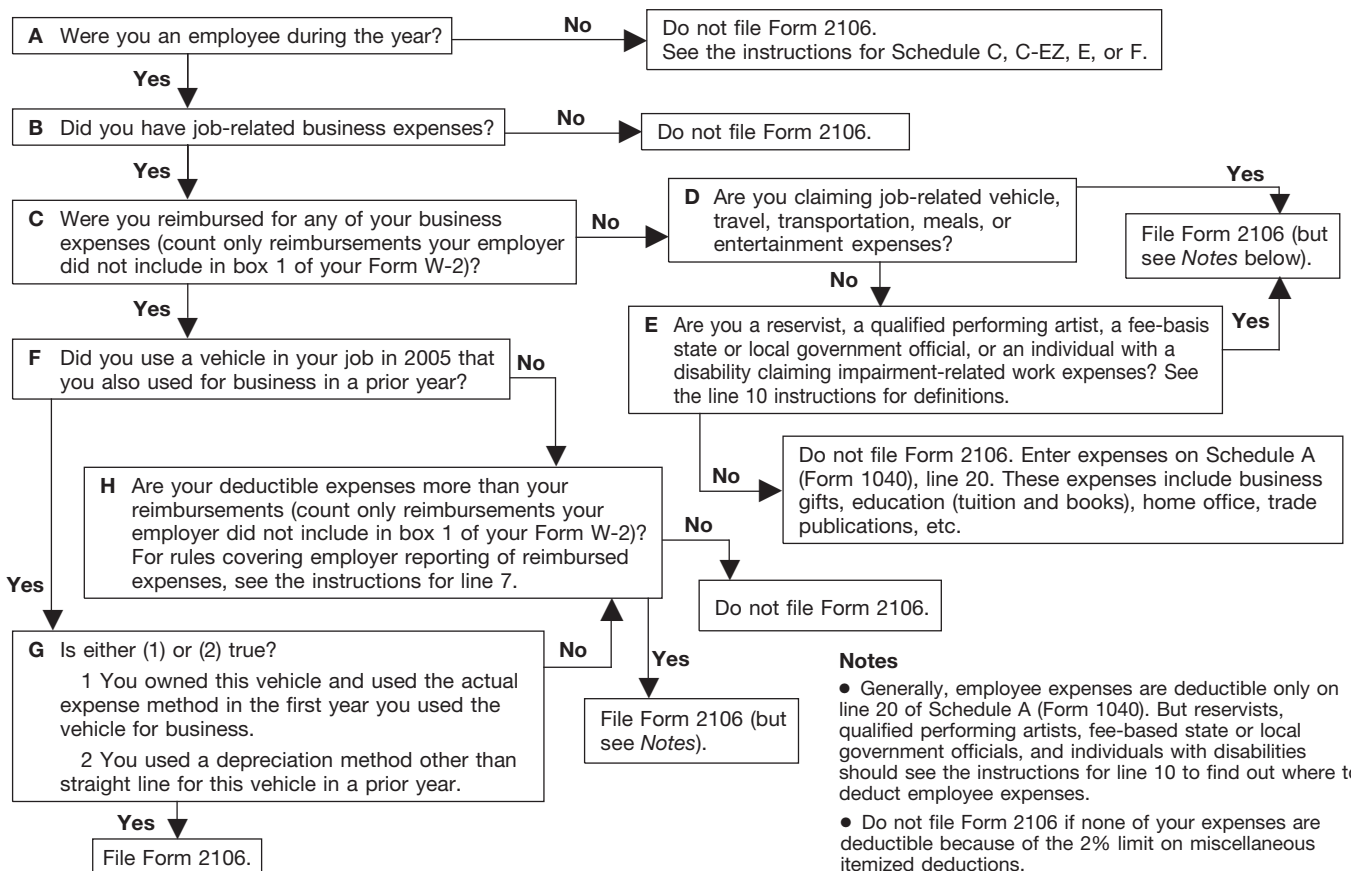
You may be able to file Form 2106-EZ, Unreimbursed Employee Business Expenses, provided you:

- Use the standard mileage rate (if claiming vehicle expense), and
- Were not reimbursed by your employer for any expense (amounts your employer included in box 1 of your Form W-2 are not considered reimbursements for this purpose). See Form 2106-EZ to find out if you qualify to file it.

### Recordkeeping

You cannot deduct expenses for travel (including meals unless you used the standard meal allowance), entertainment, gifts, or use of a car or other listed property, unless you keep records to prove the time, place, business purpose, business relationship (for entertainment and gifts), and amounts of these

## Who Must File Form 2106



expenses. Generally, you must also have receipts for all lodging expenses (regardless of the amount) and any other expense of \$75 or more.

## Additional Information

For more details about employee business expenses, see:

- Pub. 463, Travel, Entertainment, Gift, and Car Expenses.
- Pub. 529, Miscellaneous Deductions.
- Pub. 587, Business Use of Your Home (Including Use by Daycare Providers).
- Pub. 946, How To Depreciate Property.

---

## Specific Instructions

### Part I—Employee Business Expenses and Reimbursements

Fill in all of Part I if you were reimbursed for employee business expenses. If you were not reimbursed for your expenses, skip line 7 and complete the rest of Part I.

#### Step 1—Enter Your Expenses

**Line 1.** If you were a rural mail carrier, you can deduct the larger of your vehicle expenses or your qualified reimbursements. You were a rural mail carrier if you were an employee of the United States Postal Service (USPS) who performed services involving the collection and delivery of mail on a rural route. Qualified reimbursements are the amounts paid by the USPS as an equipment maintenance allowance under a collective bargaining agreement between the USPS and the National Rural Letter Carriers' Association, but only if such amounts do not exceed the amount that would have been paid under the 1991 collective bargaining agreement (adjusted for changes in the Consumer Price Index since 1991).

If your vehicle expenses are:

- Less than or equal to your qualified reimbursements, you do not have to file Form 2106 unless you have deductible expenses other than vehicle expenses. If you have deductible expenses other than vehicle expenses, skip line 1 and do not include any qualified reimbursements in column A on line 7.

- More than your qualified reimbursements, complete Part II of Form 2106. Enter your total vehicle expenses from line 22c or line 29 on line 1 and the amount of your qualified reimbursements in column A on line 7.



*If you are a rural mail carrier and received a qualified reimbursement, you cannot use the standard mileage rate.*

**Line 2.** See the line 15 instructions for the definition of commuting.

**Line 3.** Enter lodging and transportation expenses connected with overnight travel away from your tax home (defined below). Do not include expenses for meals and entertainment. For more details, including limits, see Pub. 463.

**Incidental expenses.** Instead of keeping records of your actual incidental expenses, you can use an optional method for deducting incidental expenses only if you did not pay or incur meal expenses on a day you were traveling away from your tax home. The amount of the deduction is \$3 a day.

Incidental expenses include fees and tips given to porters, baggage carriers, bellhops, hotel maids, stewards or stewardesses and others on ships, and hotel servants in foreign countries; transportation between places of lodging or business and places where meals are taken, if suitable meals can be obtained at the temporary duty site; and mailing cost associated with filing travel vouchers and payment of employer-sponsored charge card billings.

Incidental expenses do not include expenses for laundry, cleaning and pressing of clothing, lodging taxes, or the costs of telegrams or telephone calls. You cannot use this method on any day that you use the standard meal allowance (defined in the instructions for line 5).

**Tax home.** Generally, your tax home is your regular or main place of business or post of duty regardless of where you maintain your family home. If you do not have a regular or main place of business because of the nature of your work, then your tax home is the place where you regularly live. If you do not fit in either of these categories, you are considered an itinerant and your tax home is wherever you work. As an itinerant, you are never away from

home and cannot claim a travel expense deduction. For more details on your tax home, see Pub. 463.

Generally, you cannot deduct any expenses for travel away from your tax home for any period of temporary employment of more than 1 year. However, this rule does not apply for any period in which you were a federal employee certified by the Attorney General as traveling in temporary duty status for the U.S. government to investigate or prosecute a federal crime (or to provide support services for the investigation or prosecution of that crime).

**Line 4.** Enter other job-related expenses not listed on any other line of this form. Include expenses for business gifts, education (tuition, fees and books), home office, trade publications, etc. For details, including limits, see Pub. 463 and Pub. 529. Do not include on line 4 any educator expenses you deducted on Form 1040, line 23, or any tuition and fees you deducted on Form 1040, line 34.

If you are deducting home office expenses, see Pub. 587 for special instructions on how to report these expenses.

If you are deducting depreciation or claiming a section 179 deduction for a cellular telephone or other similar telecommunications equipment, a home computer, etc., see Form 4562, Depreciation and Amortization, to figure the depreciation and section 179 deduction to enter on line 4.

**TIP** You may be able to take a credit for your educational expenses instead of a deduction. See Form 8863, Education Credits, for details.

Do not include expenses for meals and entertainment, taxes, or interest on line 4. Deductible taxes are entered on Schedule A (Form 1040), lines 5 through 9. Employees cannot deduct car loan interest.

**Note.** If line 4 is your only entry, do not complete Form 2106 unless you are claiming:

- Performing-arts-related business expenses as a qualified performing artist,
- Expenses for performing your job as a fee-basis state or local government official, or
- Impairment-related work expenses as an individual with a disability.



**Reimbursement Allocation  
Worksheet**  
(keep for your records)

See the line 10 instructions for definitions. If you are not required to file Form 2106, enter your expenses directly on Schedule A (Form 1040), line 20.

**Line 5.** Enter your allowable meals and entertainment expense. Include meals while away from your tax home overnight and other business meals and entertainment.

**Standard meal allowance.**

Instead of actual cost, you may be able to claim the standard meal allowance for your daily meals and incidental expenses while away from your tax home overnight. Under this method, you deduct a specified amount, depending on where you travel, instead of keeping records of your actual meal expenses. However, you must still keep records to prove the time, place, and business purpose of your travel.

The standard meal allowance is the federal M&IE rate. For most small localities in the United States, this rate is \$31 a day for the period from January 1 through September 30, 2005, and \$39 a day for the period from October 1 through December 31, 2005. Most major cities and many other localities in the United States qualify for higher rates. You can find these rates on the Internet at [www.gsa.gov](http://www.gsa.gov). At the GSA home page click on "Per Diem Rates." At the Domestic Per diem Rates page select "2005" for the rates in effect for the period January 1, 2005–September 30, 2005. Select "2006" for the period October 1, 2005–December 31, 2005. However, you can apply the rates in effect before October 1, 2005, for expenses of all travel within the United States for 2005 instead of the updated rates. You must consistently use either the rates for the first 9 months of 2005 or the updated rates for the period of October 1, 2005, through December 31, 2005.

For locations outside the continental United States, the applicable rates are published each month. You can find these rates on the Internet at [www.state.gov](http://www.state.gov).

See Pub. 463 for details on how to figure your deduction using the standard meal allowance, including special rules for partial days of travel and transportation workers.

**Step 2—Enter Reimbursements Received From Your Employer for Expenses Listed in Step 1**

**Line 7.** Enter reimbursements received from your employer (or third party) for expenses shown in Step 1 that were not reported to you in box 1 of your Form W-2. This includes reimbursements reported under code "L" in box 12 of Form W-2. Amounts reported under code "L" are certain reimbursements you received for business expenses that were not included as wages on Form W-2 because the expenses were treated as meeting specific IRS substantiation requirements.

Generally, when your employer pays for your expenses, the payments should not be included in box 1 of your Form W-2 if, within a reasonable period of time, you:

- Accounted to your employer for the expenses, and
- Were required to return, and did return, any payment not spent (or considered not spent) for business expenses.

If these payments were included in box 1, ask your employer for a corrected Form W-2.

Accounting to your employer means that you gave your employer documentary evidence and an account book, diary, or similar statement to verify the amount, time, place, and business purpose of each expense. You are also treated as having accounted for your expenses if either of the following applies.

- Your employer gave you a fixed travel allowance that is similar in form to the per diem allowance specified by the Federal Government and you verified the time, place, and business purpose of the travel for that day.
- Your employer reimbursed you for vehicle expenses at the standard mileage rate or according to a flat rate or stated schedule, and you verified the date of each trip, mileage, and business purpose of the vehicle use.

See Pub. 463 for more details.

**Allocating your reimbursement.**

If your employer paid you a single amount that covers meals and entertainment as well as other business expenses, you must allocate the reimbursement so that you know how much to enter in Column A and Column B of line 7. Use the following worksheet to figure this allocation.

1. Enter the total amount of reimbursements your employer gave you that were not reported to you in box 1 of Form W-2 . . . . .	_____
2. Enter the total amount of your expenses for the periods covered by this reimbursement . . . . .	_____
3. Of the amount on line 2, enter your total expense for meals and entertainment . . . . .	_____
4. Divide line 3 by line 2. Enter the result as a decimal (rounded to at least three places) . . . . .	_____
5. Multiply line 1 by line 4. Enter the result here and in Column B, line 7 . . . . .	_____
6. Subtract line 5 from line 1. Enter the result here and in Column A, line 7 . . . . .	_____

**Step 3—Figure Expenses To Deduct on Schedule A (Form 1040)**

**Line 9.** Generally, you can deduct only 50% of your business meal and entertainment expenses, including meals incurred while away from home on business. If you were an employee subject to the Department of Transportation (DOT) hours of service limits, that percentage is 70% for business meals consumed during, or incident to, any period of duty for which those limits are in effect.

Employees subject to the DOT hours of service limits include certain air transportation employees, such as pilots, crew, dispatchers, mechanics, and control tower operators; interstate truck operators and interstate bus drivers; certain railroad employees, such as engineers, conductors, train crews, dispatchers, and control operations personnel; and certain merchant mariners.

**Line 10.** If you are one of the individuals discussed below, special rules apply to deducting your employee business expenses. Any part of the line 10 total that is not deducted according to the special rules should be entered on Schedule A (Form 1040), line 20.

**Armed Forces reservist (member of a reserve component).** You are a member of a reserve

component of the Armed Forces of the United States if you are in the Army, Navy, Marine Corps, Air Force, or Coast Guard Reserve; the Army National Guard of the United States; the Air National Guard of the United States; or the Reserve Corps of the Public Health Service.

If you qualify, include the part of the line 10 amount attributable to the expenses for travel more than 100 miles away from home in connection with your performance of services as a member of the reserves on Form 1040, line 24, and attach Form 2106 to your return. These reserve-related travel expenses are deductible whether or not you itemize deductions. See Pub. 463 for additional details on how to report these expenses.

**Fee-basis state or local government official.** You are a qualifying fee-basis official if you are employed by a state or political subdivision of a state and are compensated, in whole or in part, on a fee basis.

If you qualify, include the part of the line 10 amount attributable to the expenses you incurred for services performed in that job in the total on Form 1040, line 24, and attach Form 2106 to your return. These employee business expenses are deductible whether or not you itemize deductions.

**Qualified performing artist.** You are a qualified performing artist if you:

1. Performed services in the performing arts as an employee for at least two employers during the tax year,
2. Received from at least two of those employers wages of \$200 or more per employer,
3. Had allowable business expenses attributable to the performing arts of more than 10% of gross income from the performing arts, and
4. Had adjusted gross income of \$16,000 or less before deducting expenses as a performing artist.

In addition, if you are married, you must file a joint return unless you lived apart from your spouse for all of 2005. If you file a joint return, you must figure requirements (1), (2), and (3) separately for both you and your spouse. However, requirement (4) applies to the combined adjusted gross income of both you and your spouse.

If you meet all the requirements, include the part of the line 10 amount

attributable to performing-arts-related expenses in the total on Form 1040, line 24, and attach Form 2106 to your return. Your performing-arts-related business expenses are deductible whether or not you itemize deductions.

**Disabled employee with impairment-related work expenses.**

Impairment-related work expenses are the allowable expenses of an individual with physical or mental disabilities for attendant care at his or her place of employment. They also include other expenses in connection with the place of employment that enable the employee to work. See Pub. 463 for more details.

If you qualify, enter the part of the line 10 amount attributable to impairment-related work expenses on Schedule A (Form 1040), line 27. These expenses are not subject to the 2% limit that applies to most other employee business expenses.

## Part II—Vehicle Expenses

There are two methods for computing vehicle expenses—the standard mileage rate and the actual expense method. You can use the standard mileage rate for 2005 only if:

- You owned the vehicle and used the standard mileage rate for the first year you placed the vehicle in service, or
- You leased the vehicle and are using the standard mileage rate for the entire lease period (except the period, if any, before 1998).

You cannot use actual expenses for a leased vehicle if you previously used the standard mileage rate for that vehicle.

If you have the option of using either the standard mileage rate or actual expense method, you should figure your expenses both ways to find the method most beneficial to you. But when completing Form 2106, fill in only the sections that apply to the method you choose.

If you were a rural mail carrier and received an equipment maintenance allowance, see the line 1 instructions.

For more information on the standard mileage rate and actual expenses, see Pub. 463.

## Section A—General Information

If you used two vehicles for business during the year, use a separate column in Sections A, C, and D for

each vehicle. If you used more than two vehicles, complete and attach a second Form 2106, page 2.

**Line 11.** Date placed in service is generally the date you first start using your vehicle. However, if you first start using your vehicle for personal use and later convert it to business use, the vehicle is treated as placed in service on the date you started using it for business.

**Line 12.** Enter the total number of miles you drove each vehicle during 2005. But if you converted your vehicle during the year from personal to business use (or vice versa), enter the total miles for only the months you drove the vehicle for business.

**Line 13.** Do not include commuting miles on this line; commuting miles are not considered business miles. See the line 15 instructions for the definition of commuting.

**Line 14.** Divide line 13 by line 12 to figure your business use percentage. However, if you converted your vehicle during the year from personal to business use (or vice versa), multiply this percentage by the number of months you drove the vehicle for business and divide the result by 12.

**Line 15.** Enter your average daily round trip commuting distance. If you went to more than one work location, figure the average.

**Commuting.** Generally, commuting is travel between your home and a work location. However, travel that meets any of the following conditions is not commuting.

- You have at least one regular work location away from your home and the travel is to a temporary work location in the same trade or business, regardless of the distance. Generally, a temporary work location is one where your employment is expected to last 1 year or less. See Pub. 463 for more details.
- The travel is to a temporary work location outside the metropolitan area where you live and normally work.
- Your home is your principal place of business under section 280A(c)(1)(A) (for purposes of deducting expenses for business use of your home) and the travel is to another work location in the same trade or business, regardless of whether that location is regular or temporary and regardless of distance.

**Line 16.** If you do not know the total actual miles you used your vehicle for commuting during the year, figure the amount to enter on line 16 by

multiplying the number of days during the year that you used each vehicle for commuting by the average daily round trip commuting distance in miles. However, if you converted your vehicle during the year from personal to business use (or vice versa), enter your commuting miles only for the period you drove your vehicle for business.

## Section B—Standard Mileage Rate

You may be able to use the standard mileage rate instead of actual expenses to figure the deductible costs of operating a passenger automobile, including a van, sport utility vehicle (SUV), pickup, or panel truck.

If you want to use the standard mileage rate for a vehicle you own, you must do so in the first year you place your vehicle in service. In later years, you can deduct actual expenses instead, but you cannot use a depreciation method other than straight line.

If you lease your vehicle, you can use the standard mileage rate, but only if you use the rate for the entire lease period (except for the period, if any, before January 1, 1998).

If you use more than two vehicles, complete and attach a second Form 2106, page 2, providing the information requested in lines 11 through 22c. Be sure to include the amount from line 22c of both pages in the total on Form 2106, line 1.

You can also deduct state and local personal property taxes. Enter these taxes on Schedule A (Form 1040), line 7.

If you are claiming the standard mileage rate for mileage driven in more than one business activity, you must figure the deduction for each business on a separate form or schedule (for example, Form 2106 or Schedule C, C-EZ, E, or F).

## Section C—Actual Expenses

**Line 23.** Enter your total annual expenses for gasoline, oil, repairs, insurance, tires, license plates, or similar items. Do not include state and local personal property taxes or interest expense you paid. Deduct state and local personal property taxes on Schedule A (Form 1040), line 7. Employees cannot deduct car loan interest.

**Line 24a.** If during 2005 you rented or leased instead of using your own vehicle, enter the cost of renting.

Also, include on this line any temporary rentals, such as when your car was being repaired, except for amounts included on line 3.

**Line 24b.** If you leased a vehicle for a term of 30 days or more after June 18, 1984, you may have to reduce your deduction for vehicle lease payments by an amount called the inclusion amount. You may have an inclusion amount if:

The lease term began in:	And the vehicle's fair market value on the first day of the lease exceeded:
2005 . . . . .	\$15,200
2004 . . . . .	17,500
2003 . . . . .	18,000
1999 through 2002 . . . . .	15,500
1997 or 1998 . . . . .	15,800
1995 or 1996 . . . . .	15,500
If the lease term began before 1995, see Pub. 463 to find out if you have an inclusion amount.	

See Pub. 463 to figure the inclusion amount.

**Line 25.** If during 2005 your employer provided a vehicle for your business use and included 100% of its annual lease value in box 1 of your Form W-2, enter this amount on line 25. If less than 100% of the annual lease value was included in box 1 of your Form W-2, skip line 25.

**Line 28.** If you completed Section D, enter the amount from line 38. If you used Form 4562 to figure your depreciation deduction, enter the total of the following amounts.

- Depreciation allocable to your vehicle(s) (from Form 4562, line 28).
- Any section 179 deduction allocable to your vehicle(s) (from Form 4562, line 29).

## Section D—Depreciation of Vehicles

Depreciation is an amount you can deduct to recover the cost or other basis of your vehicle over a certain number of years. In some cases, you can elect to expense, under section 179, part of the cost of your vehicle in the year of purchase. For details, see Pub. 463.

**Vehicle trade-in.** If you traded one vehicle (the "old vehicle") in on another vehicle (the "new vehicle") in 2005, there are two ways you can treat the transaction.

1. You can elect to treat the transaction as a tax-free disposition of the old vehicle and the purchase of the new vehicle. If you make this election, you treat the old vehicle as disposed of at the time of the trade-in. The depreciable basis of the new vehicle is the adjusted basis of the old vehicle (figured as if 100% of the vehicle's use had been for business purposes) plus any additional amount you paid for the new vehicle. You then figure your depreciation deduction for the new vehicle beginning with the date you placed it in service. You make this election by completing Form 2106, Part II, Section D.

2. If you do not make the election described in (1), you must figure depreciation separately for the remaining basis of the old vehicle and for any additional amount you paid for the new vehicle. You must apply two depreciation limits (see pages 7 and 8). The limit that applies to the remaining basis of the old vehicle generally is the amount that would have been allowed had you not traded in the old vehicle. The limit that applies to the additional amount you paid for the new vehicle generally is the limit that applies for the tax year it was placed in service, reduced by the depreciation allowance for the remaining basis of the old vehicle. You must use Form 4562 to compute your depreciation deduction. You cannot use Form 2106, Part II, Section D.

If you elect to use the method described in (1), you must do so on a timely filed tax return (including extensions). Otherwise, you must use the method described in (2).

**Line 30.** Enter the vehicle's actual cost (including sales tax, unless deducted) or other basis (unadjusted for prior years' depreciation). If you traded in your vehicle, your basis is the adjusted basis of the old vehicle (figured as if 100% of the vehicle's use had been for business purposes) plus any additional amount you pay for your new vehicle. Reduce your basis by any diesel fuel or qualified electric vehicle credit or deduction for clean-fuel vehicles you claimed.

If you converted the vehicle from personal use to business use, your basis for depreciation is the smaller of the vehicle's adjusted basis or its fair market value on the date of conversion.

**Line 31.** If 2005 is the first year your vehicle was placed in service and the



percentage on line 14 is more than 50%, you can elect to deduct as an expense a portion of the cost (subject to a yearly limit). To calculate this section 179 deduction, multiply the part of the cost of the vehicle that you choose to expense by the percentage on line 14. The total of your depreciation and section 179 deduction generally cannot be more than the percentage on line 14 multiplied by the applicable limit explained in the line 36 instructions (see pages 7 and 8). Your section 179 deduction for the year cannot be more than the income from your job and any other active trade or business on your Form 1040.



*If you are claiming a section 179 deduction on other property, or you placed more than \$420,000 of section 179 property in service during the year, use Form 4562 to figure your section 179 deduction. Enter the amount of the section 179 deduction allocable to your vehicle (from Form 4562, line 12) on Form 2106, line 31.*

**Note.** For section 179 purposes, the cost of the new vehicle does not include the adjusted basis of the vehicle you traded in.

**Example:**

Cost including taxes . . . . .	\$25,000
Adjusted basis of trade-in . . . . .	<u>– 3,000</u>
Section 179 basis . . . . .	\$22,000
Limit on depreciation and section 179 deduction . . . . .	\$ 2,960

*Smaller of:*

Section 179 basis, or limit on depreciation and section 179 deduction . . . . .	\$ 2,960
Percentage on line 14 . . . . .	<u>× .75</u>
Section 179 deduction . . . . .	\$ 2,220

**Limit for sport utility and certain other vehicles.**

For sport utility and certain other vehicles placed in service in 2005, the portion of vehicle's cost taken into account in figuring your section 179 deduction is limited to \$25,000. This rule applies to any 4-wheeled vehicle primarily designed or used to carry passengers over public streets, roads, or highways, that is not subject to any of the passenger automobile limits explained in the line 36 instructions, and is rated at no more than 14,000 pounds gross vehicle weight. However, the \$25,000 limit does not apply to any vehicle:

- Designed to have a seating capacity of more than nine persons behind the driver's seat, or

- Equipped with a cargo area of at least 6 feet in interior length that is an open area or is designed for use as an open area but is enclosed by a cap and is not readily accessible directly from the passenger compartment, or
- That has an integral enclosure, fully enclosing the driver compartment and load carrying device, does not have seating rearward of the driver's seat, and has no body section protruding more than 30 inches ahead of the leading edge of the windshield.

**Line 32.** To figure the basis for depreciation, multiply line 30 by the percentage on line 14. From that result, subtract the full amount of any section 179 deduction and special depreciation allowance (and half of any investment credit taken before 1986 unless you took the reduced credit).

**Line 33.** If you used the standard mileage rate in the first year the vehicle was placed in service and now elect to use the actual expense method, you must use the straight line method of depreciation for the vehicle's estimated useful life. Otherwise, use the *Depreciation Method and Percentage Chart* below to find the depreciation method and percentage to enter on line 33. (For example, if you placed a car in service on July 1, 2005, and you use the method in column (a), enter "200

**Depreciation Method and Percentage Chart—Line 33**

Date Placed in Service	(a) <sup>1</sup>	(b) <sup>1</sup>	(c)
Oct. 1 – Dec. 31, 2005	200 DB 5.0 %	150 DB 3.75%	SL 2.5%
Jan. 1 – Sept. 30, 2005	200 DB 20.0	150 DB 15.0	SL 10.0
Oct. 1 – Dec. 31, 2004	200 DB 38.0	150 DB 28.88	SL 20.0
Jan. 1 – Sept. 30, 2004	200 DB 32.0	150 DB 25.5	SL 20.0
Oct. 1 – Dec. 31, 2003	200 DB 22.8	150 DB 20.21	SL 20.0
Jan. 1 – Sept. 30, 2003	200 DB 19.2	150 DB 17.85	SL 20.0
Oct. 1 – Dec. 31, 2002	200 DB 13.68	150 DB 16.4	SL 20.0
Jan. 1 – Sept. 30, 2002	200 DB 11.52	150 DB 16.66	SL 20.0
Oct. 1 – Dec. 31, 2001 <sup>2</sup>	200 DB 10.94	150 DB 16.41	SL 20.0
Jan. 1 – Sept. 30, 2001	200 DB 11.52	150 DB 16.66	SL 20.0
Oct. 1 – Dec. 31, 2000	200 DB 9.58	150 DB 14.35	SL 17.5
Jan. 1 – Sept. 30, 2000	200 DB 5.76	150 DB 8.33	SL 10.0
Prior to 2000 <sup>3</sup>			

<sup>1</sup>You can use this column only if the business use of your car is more than 50%.

<sup>2</sup>If you made the election under Notice 2001-70 to use the half-year convention for vehicles placed in service October 1 through December 31, 2001, use the percentage rate shown for vehicles placed in service January 1 through September 30, 2001.

<sup>3</sup>If your car was subject to the maximum limits for depreciation and you have unrecovered basis in the car, you can continue to claim depreciation. See Pub. 463 for more information.

DB 20%” on line 33.) To use the chart, first find the date you placed the vehicle in service (line 11). Then, select the depreciation method and percentage from column (a), (b), or (c). For vehicles placed in service before 2005, use the same method you used on last year’s return unless a decline in your business use requires a change to the straight line method. For vehicles placed in service during 2005, select the depreciation method and percentage after reading the explanation for each column.

**Column (a).** You can use column (a) only if the business use percentage on line 14 is more than 50%. Of the three depreciation methods, the method in this column, the 200% declining balance method, will give you the largest deduction in the year your vehicle is placed in service. This column is also used for vehicles placed in service before 1987 and depreciated under the accelerated cost recovery system (ACRS).

**Column (b).** You can use column (b) only if the business use percentage on line 14 is more than 50%. The method in this column, the 150% declining balance method, will give you a smaller depreciation deduction than in column (a) for the first 3 years. However, you will not have a “depreciation adjustment” on this vehicle for the alternative minimum tax. This may result in a smaller tax liability if you must file Form 6251, Alternative Minimum Tax—Individuals.

**Column (c).** You must use column (c) for vehicles placed in service after 1986 if the business use percentage on line 14 is 50% or less. The method for these vehicles is the straight line method over 5 years. The use of this column is optional for these vehicles if the business use percentage on line 14 is more than 50%. This column is also used for vehicles placed in service after June 18, 1984, and before 1987 if you elected the straight line method over a recovery period of 12 years.

**Note.** If your vehicle was used more than 50% for business in the year it was placed in service and used 50% or less in a later year, part of the depreciation and section 179 deduction previously claimed may

have to be added back to your income in the later year. Figure the amount to be included in income on Form 4797, Sales of Business Property.



*If you placed other business property in service during the year you placed your vehicle in service (for any year after 1986), or you used your vehicle mainly within an Indian reservation, you may not be able to use the chart. See Pub. 946 to figure your depreciation.*

**Line 34.** If during the year you did not sell or exchange your vehicle (or you sold or exchanged your vehicle that was placed in service after 1986 and before 2000), multiply line 32 by the percentage on line 33.

If during the year you sold or exchanged your vehicle that was placed in service:

- Before 1987, enter -0- on line 34 for that vehicle.

- After 1999, multiply the result for line 34 by 50%, and enter on line 34. However, if you originally placed the vehicle in service during the last 3 months of a year after 1999 (and, if your vehicle was placed in service in 2001, you did not make the election under Notice 2001-70), multiply the result for line 34 by the percentage shown below for the month you disposed of the vehicle. Enter the reduced amount on line 34.

Month	Percentage
Jan., Feb., March . . . . .	12.5%
April, May, June . . . . .	37.5%
July, Aug., Sept. . . . .	62.5%
Oct., Nov., Dec. . . . .	87.5%

**Line 36.** Using the applicable chart for your type of vehicle, find the date you placed your vehicle in service. Then, enter on line 36 the corresponding amount from the *Limit* column. Before using the charts on pages 7 and 8, please read the following definitions.

- A passenger automobile is a 4-wheeled vehicle manufactured primarily for use on public roads that is rated at 6,000 pounds unloaded gross vehicle weight or less (for a truck or van, gross vehicle weight is substituted for unloaded gross vehicle

weight). Certain vehicles, such as ambulances, hearses, and taxicabs, are not considered passenger automobiles and are not subject to the line 36 limits. See Pub. 463 for more details.

- A truck or van is a passenger automobile built on a truck chassis, including a minivan or a sport utility vehicle built on a truck chassis.

- An electric passenger vehicle is a vehicle produced by an original equipment manufacturer and designed to run primarily on electricity. Gasoline-electric hybrid vehicles that are not designed to run primarily on electricity (such as the Honda Civic Hybrid, Honda Insight, and Toyota Prius) are not electric passenger vehicles.

If your vehicle is not subject to any of the line 36 limits, skip lines 36 and 37, and enter the amount from line 35 on line 38.

**Exception for clean-fuel modifications.** For vehicles placed in service after August 5, 1997, the passenger automobile limits (including those for trucks and vans) do not apply to the cost of any qualified clean-fuel vehicle property (such as retrofit parts and components) installed on a vehicle for the purpose of permitting that vehicle to run on a clean-burning fuel. See section 179A for definitions.

**Limits for Passenger Automobiles (Except Electric Automobiles Placed in Service After August 5, 1997, Trucks, and Vans)**

Date Vehicle Was Placed in Service	Limit
Jan. 1 – Dec. 31, 2005 . . . . .	\$2,960
Jan. 1 – Dec. 31, 2004 . . . . .	4,800
Jan. 1 – Dec. 31, 2003 . . . . .	2,950
Jan. 1, 1995 – Dec. 31, 2002	1,775
Jan. 1, 1993 – Dec. 31, 1994	1,675
Jan. 1, 1991 – Dec. 31, 1992	1,575
Jan. 1, 1987 – Dec. 31, 1990	1,475
Apr. 3, 1985 – Dec. 31, 1986	4,800
Jan. 1 – Apr. 2, 1985 . . . . .	6,200
June 19 – Dec. 31, 1984 . . . .	6,000

**Limits for Trucks and Vans**

<b>Date Vehicle Was Placed in Service</b>	<b>Limit</b>
Jan.1 – Dec. 31, 2005 . . . . .	\$3,260
Jan. 1 – Dec.31, 2004 . . . . .	5,300
Jan. 1 – Dec. 31, 2003 . . . . .	3,250
Jan. 1, 1995 – Dec. 31, 2002	1,775
Jan. 1, 1993 – Dec. 31, 1994	1,675
Jan. 1, 1991 – Dec. 31, 1992	1,575
Jan. 1, 1987 – Dec. 31, 1990	1,475
Apr. 3, 1985 – Dec. 31, 1986	4,800
Jan. 1 – Apr. 2, 1985 . . . . .	6,200
June 19 – Dec. 31, 1984 . . . .	6,000

**Limits for Electric Automobiles Placed in Service After August 5, 1997**

<b>Date Vehicle Was Placed in Service</b>	<b>Limit</b>
Jan. 1 – Dec. 31, 2005 . . . . .	\$ 8,880
Jan. 1 – Dec. 31, 2004 . . . . .	14,300
Jan. 1 – Dec. 31, 2003 . . . . .	8,750
Jan. 1, 1999 – Dec. 31, 2002	5,325
Aug. 6, 1997 – Dec. 31, 1998	5,425

**Paperwork Reduction Act Notice.**

We ask for the information on this form to carry out the Internal Revenue laws of the United States. You are required to give us the information. We need it to ensure that you are complying with these laws and to allow us to figure and collect the right amount of tax.

You are not required to provide the information requested on a form that is subject to the Paperwork Reduction Act unless the form displays a valid OMB control number. Books or records relating to a form or its instructions must be retained as long as their contents may become

material in the administration of any Internal Revenue law. Generally, tax returns and return information are confidential, as required by section 6103.

The average time and expenses required to complete and file this form will vary depending on individual circumstances. For the estimated averages, see the instructions for your income tax return.

If you have suggestions for making this form simpler, we would be happy to hear from you. See the instructions for your income tax return.