

**SUPPORTING STATEMENT
FOR**

New Clearance Request under

P.L. 109-59, Section 5511 (71 FR 30831)

Pilot Motorcycle Crash Causes and Outcomes Study

and

Motorcycle Crash Causation Study

TABLE OF CONTENTS

<u>Chapter</u>	<u>Page</u>
A. JUSTIFICATION.....	5
A1. Circumstances, Statutes, and Regulations.....	5
A1.1 Congressional Mandate.....	5
A1.2 FHWA Authorization.....	6
A1.3 NHTSA Authorization.....	6
A1.4 Highway Safety Need.....	6
A1.5 Circumstances Leading to a Combined Approval Request.....	7
A2. Indicate How, by Whom, and for What Purpose the Information is to be Used.....	7
A2.1 FHWA Data Applications.....	7
A2.2 NHTSA Data Applications.....	7
A2.3 National Transportation Safety Board (NTSB) Potential Uses.....	8
A2.4 Other Users of Project Data (e.g. state government, manufacturers).....	8
A3. Uses of Automatic, Electronic, Mechanical, or Technologic Data Collection Techniques.....	8
A4. Describe Efforts to Identify Duplication. Show Why any Similar Information Already Available Cannot be Used or Modified.....	8
A5. If the Collection of Information Impacts Small Businesses or Other Small Entities, Describe Any Methods Used to Minimize Burden.....	8
A6. Describe the Consequence to Federal Program or Policy Activity if the Collection is not Conducted or is Conducted Less Frequently.....	9
A7. Explain any Special Circumstances that Require the Collection to be Conducted in a Manner Inconsistent with the Guidelines Set Forth in 5CFR.1320.6.....	9
A8. Compliance with 5CFR 1320.6.....	9
A8.1 Federal Register Notice (60 Day) - Comment Summary.....	9
A8.1.1 Non-Supportive Comments.....	9
A8.1.2 Supportive Comments.....	10
A8.2 Federal Register Notice (30 Day) - 0Comment Summary.....	12
A9. Payment or Gift to Respondents.....	15
A10. Assurances of Confidentiality Provided to Respondents.....	15
A11. Justification of Collection of Sensitive Information.....	15

TABLE OF CONTENTS
(continued)

<u>Chapter</u>	<u>Page</u>
A12. Estimated of the Hour Burden of the Collection of Information on the Respondents.....	15
A13. Estimate of the Total Cost Burden to Respondents Resulting from the Collection of Information.....	16
A14. Estimates of Annualized Costs to the Federal Government.....	16
A15. Explain the Reason for any Program Changes of Adjustments.....	16
A16. For Collection of Information whose Results will be Published, Outline Plans for Tabulation and Publication	17
A16.1 Motorcycle Crash Causes and Outcomes - Pilot Study.....	17
A16.2 Motorcycle Crash Causation Study - Main Study.....	17
A17. Approval for not Displaying the Expiration Date of Collection.....	17
A18. Exception to the Certification Statement	17
B. COLLECTIONS OF INFORMATION EMPLOYING STATISTICAL METHODS.....	18
B1. Describe the Potential Respondent Universe and any Sampling or other Respondent Selection Methods to be Used.....	18
B1.1 Potential Respondent Universe.....	18
B1.2 Crash Sample Acquisition.....	18
B1.3 Control Sample Acquisition.....	19
B2. Describe Collection of Information Procedures.....	19
B2.1 Crash Investigation Procedures.....	19
B2.2 Control Data Collection Procedures.....	20
B3. Describe Methods to Maximize Response Rates and to Deal with Issues of Non-Response.....	20
B4. Describe any Tests of Procedures or Methods to be Undertaken.....	21
B5. Contact Information for Consultants and Agency Officials.....	22
B5.1 Statisticians Consulted.....	22
B5.2 Agency, Contractors, Grantees.....	22

**TABLE OF CONTENTS
(continued)**

List of Figures

Figure

1	Occupant Fatality Rate per 100 Million Vehicle Miles Traveled by Vehicle Type.....	6
---	--	---

List of Attachments

Attachment

1. SAFETEA-LU, Section 5511
2. Notice From Federal Register: November 24, 2006 (Volume 71, Number 226)
3. Comments in Response to Federal Register Notice of November 24, 2006
4. Notice From Federal Register: February 26, 2007 (Volume 72, Number 37)
5. Comments from Federal Register Notice of February 26, 2007
6. Motorcycle Study Draft Interview Forms:
 - Crash Motorcycle Rider
 - Crash Motorcycle Passenger
 - Crash Motor Vehicle Driver
 - Control Motorcycle Rider
 - Control Motorcycle Passenger
 - Control Motor Vehicle Driver
7. OECD Methodology
8. SAMPLE Certificate of Confidentiality
9. DRAFT Informed Consent

A. JUSTIFICATION

A1. EXPLAIN THE CIRCUMSTANCES THAT MAKE THE COLLECTION OF INFORMATION, NECESSARY. ATTACH A COPY OF THE APPROPRIATE SECTION OF EACH STATUTE AND REGULATION MANDATING OR AUTHORIZING THE COLLECTION OF INFORMATION.

A1.1 Congressional Mandate

Congress directed the Department of Transportation (USDOT) to conduct research that will provide a better understanding of the causes of motorcycle crashes in Section 5511 of the Safe, Accountable, Flexible, Efficient, Transportation Equity Act: A Legacy for Users (SAFETEA-LU) Pub. L. 109-59. The legislation requires the Secretary of Transportation to provide grants to the Oklahoma Transportation Center (OTC) for the purpose of conducting a comprehensive, in-depth motorcycle crash causation study using the common international methodology for in-depth motorcycle crash investigation. (This methodology was developed by the Organization for Economic Cooperation and Development (OECD) to foster uniform procedures in the investigation of motorcycle crashes).

The OECD methodology is a comprehensive approach to investigating motorcycle crashes. The 649 page methodology calls for the investigation of crashes of all severities and the collection of exposure data in the form of controls (two matched non-crash involved vehicles for every similar crash-involved vehicle). Crash investigations specify interviews with motorcycle operators, passengers and the drivers of other-involved vehicles. Human factors topics range from rider experience, licensing and training to fatigue, drug and alcohol use, trip purpose, use of protective clothing, and risk-taking behaviors.

Vehicle inspections specify detailed examinations and judgments of pre-and post-crash condition for every motorcycle component. The type, size and handling characteristics of the motorcycles are also carefully documented. When other motor vehicles (such as cars and trucks) are involved in crashes with motorcycles, data on the points of contact and exterior vehicle damage are recorded.

Roadway features, traffic controls, and environmental factors that could have contributed to crash causation are recorded. In addition, circumstances such as line-of-site and potential visual obstructions are noted.

Control data includes detailed interviews with motorcycle operators, passengers and drivers of other vehicles similarly at risk to those involved in each crash. OECD also requires careful documentation of the condition of motorcycles selected as part of the control population.

The OECD protocol also describes a 12 week training program that covers data collection techniques (interviewing skills, vehicle damage assessments), and the analyses of physical data such as metal fractures. Very limited training materials are available. A database developed in Europe has been used previously to record crash investigation and control data.

A1.2 FHWA Authorization

The Federal Highway Administration (FHWA) was delegated authority to conduct this research by the Secretary under Section 5511 (71 FR 30831). Under 23 USC402 , FHWA has responsibility for highway safety programs, research and development related to highway design, construction and maintenance, traffic control devices, and identification and surveillance of accident locations.

A1.3 NHTSA Authorization

The National Highway Traffic Safety Administration's (NHTSA's) authorization to conduct the motorcycle study derives from the National Traffic and Motor Vehicle Safety Act of 1966 (Public Law 89-563, Title 1, Sections 106, 108, and 112). Under this legislation, NHTSA is charged with the collection of crash data to support the establishment and enforcement of motor vehicle regulations that reduce the severity of injury and property damage caused by motor vehicle crashes.

A1.4 Highway Safety Need

This research on the causes of motorcycle crashes is necessary because the countermeasures currently being used have not been effective in reducing the rate of motorcycle crashes in recent years. The figure below shows how serious the problem of motorcycle safety has become. It compares the occupant fatality rate per 100 million vehicle miles traveled for motorcycles with the same rate for passenger cars over the past 10 years. The information to be acquired in this study is needed to reverse this upward trend.

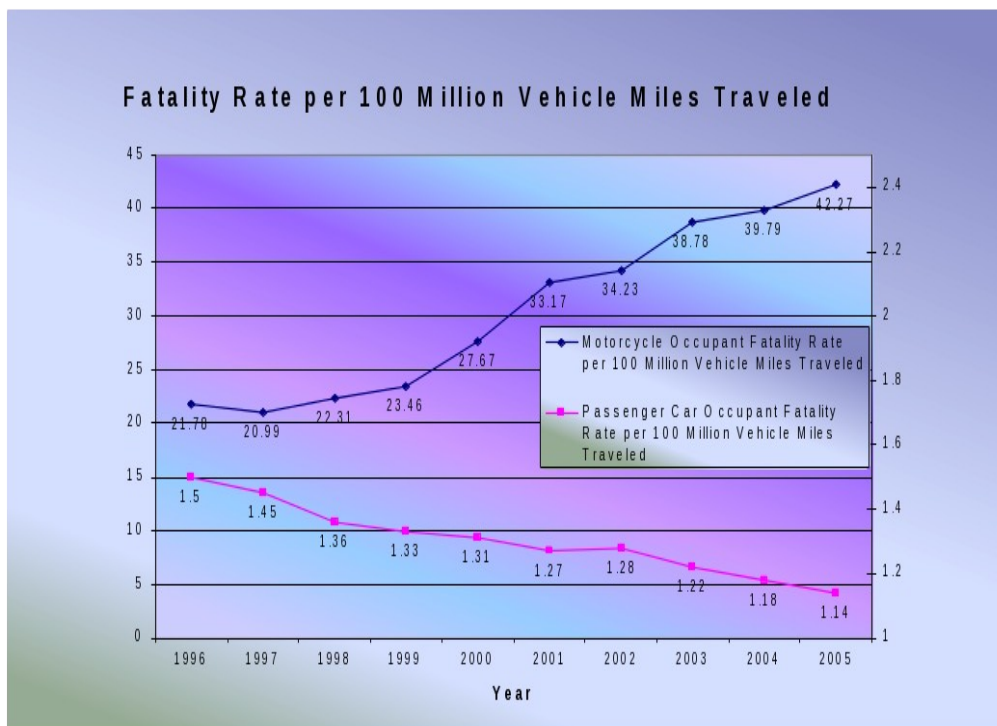


Figure 1. Occupant Fatality Rate per 100 Million Vehicle Miles Traveled by Vehicle Type

A1.5 Circumstances Leading to a Combined Approval Request

Prior to this directive by Congress, NHTSA initiated a pilot study to investigate the causes of motorcycle crashes using the OECD methodology. Given that FHWA was authorized to conduct a main study using the OECD methodology, and that NHTSA had already begun its pilot study, an opportunity was provided for the NHTSA study to seamlessly transition into the main FHWA study. The coordination of these two studies is expected to allow the main study to avoid many start up costs (e.g., site selection, training of personnel, coding manual development, data form development, etc. that will be accomplished by the pilot study). Because the NHTSA and FHWA studies will become a single research effort, and because the methods that will be used are the same, the USDOT decided to request a single clearance from the Office of Management and Budget (OMB) for both studies.

A2. INDICATE HOW, BY WHOM, AND FOR WHAT PURPOSE THE INFORMATION IS TO BE USED .

A2.1 FHWA Data Applications

The data from this study will provide the FHWA with information that will allow determination and development of effective countermeasures to reduce the frequency and severity of motorcycle crashes for the various crash types as determined by the study. Countermeasures may take the form of rulemaking, safety programs, design standards, and recommended practices.

The FHWA can use the information from this study to evaluate and update current roadway design and maintenance guidelines. The information can also be used to make roadways more accommodating to motorcyclists by modifying road delineation and markings, conspicuity of traffic controls, signal timing, intersection design, and vehicle detection.

For example, this research may show that one of the most common motorcycle crash types occurs on sharp curves on arterial roads. A potential countermeasure could be the installation of warning or advisory signs for motorcyclists indicating the approaches to such curves. Another frequent crash type could be automobiles turning left in front of oncoming motorcycles. A potential ITS (Intelligent Transportation System) countermeasure could be an in-vehicle warning to drivers preceding unsignalized intersections or signalized intersections with permissive phasing advising them to watch for oncoming motorcyclists.

A2.2 NHTSA Data Applications

NHTSA can use the data in its development of licensing requirements, rider training programs, and vehicle design standards. Such information is critical to the evaluation of current standards and practices and to the development of improvements that enhance traffic safety.

As an example, if the research were to show that a large proportion of the crashes involved novice riders on motorcycles over 900 cubic centimeters, NHTSA may recommend graduated rider licensing, based on engine displacement. As another example, if the research shows that in many crashes the motorist did not see the motorcyclist, and then increased conspicuity of the motorcycle could be mandated. With the increasing use of daytime running lights on passenger vehicles, a different headlight color for motorcycle daytime use is a remedy that could be considered.

A2.3 National Transportation Safety Board (NTSB) Potential Uses

The NTSB sponsored a Forum on motorcycle safety on September 12-13, 2006 to raise awareness of the increasing rate of motorcycle crash-related fatalities and injuries. NTSB submitted a statement to the Docket in support of this study. It is possible that NTSB will make use of the findings to support recommendations on motorcycle safety.

A2.4 Other Users of Project Data (e.g. state governments, manufacturers)

This information could also be used by State highway engineers for road design and maintenance changes, and by State highway safety officers in their development of highway safety initiatives. The motorcycle industry could use this information as it develops safer vehicle designs. User organizations, (e.g., American Motorcyclists' Association) could use findings from this study as they develop recommendations for their constituencies. Other potential users include insurance companies, safety research organizations, and universities that have an interest in improving transportation safety.

A3. DESCRIBE WHETHER, OR TO WHAT EXTENT, THE COLLECTION OF INFORMATION INVOLVES THE USE OF AUTOMATED, ELECTRONIC, MECHANICAL, OR OTHER TECHNOLOGICAL COLLECTION TECHNIQUES OR OTHER FORMS OF INFORMATION TECHNOLOGY.

Vehicle and scene data will be collected mainly using photographic equipment and electronic and mechanical measuring devices. These include digital cameras and Total Stations (surveying devices that measure distance and elevation). However, data describing rider, passenger, and motor vehicle operator characteristics and behaviors will be collected through in-person and telephone interviews using paper data collection forms in the Pilot study, however, the plan is to convert these to electronic forms when the Main study is conducted.

A4. DESCRIBE EFFORTS TO IDENTIFY DUPLICATION. SHOW WHY ANY SIMILAR INFORMATION ALREADY AVAILABLE CANNOT BE USED OR MODIFIED.

This study does not duplicate any US National study on motorcycle crashes. The last federally sponsored study focused on MC crashes was performed by researchers at the University of Southern California, for NHTSA, in the 1970s. Some information is available on motorcycle crashes in the U.S. from state databases using widely different protocols; however, these do not conform to the OECD methodology. Both FHWA and NHTSA currently collect a limited amount of data on motorcycle crashes; however, again, the data do not conform to the OECD methodology and moreover, do not capture exposure data, and are not focused on antecedents to such crashes. The application of the OECD guidelines results in a more complete collection of data and also allows this study to be compared to recent research conducted in Thailand and Europe.

A5. IF THE COLLECTION OF INFORMATION IMPACTS SMALL BUSINESSES OR OTHER SMALL ENTITIES, DESCRIBE ANY METHODS USED TO MINIMIZE BURDEN.

There are no planned interactions with small businesses in this study. Crash investigations may take place in the general vicinity of small businesses, but steps will be taken to avoid placing any burden on small businesses.

A6. DESCRIBE THE CONSEQUENCE TO FEDERAL PROGRAM OR POLICY ACTIVITIES IF THE COLLECTION IS NOT CONDUCTED OR IS CONDUCTED LESS FREQUENTLY.

The upward trend in motorcycle crashes and fatalities is likely to continue or worsen if the collection is not conducted. The reason for this is that the existing countermeasures currently being used have not been as effective as hoped. This research will allow new countermeasures to be developed and tested.

Regarding the matter of collection frequency, FHWA and NHTSA do not see a need to repeat this study in the near term. The vehicle mix and crash environment are expected to remain fairly stable for the next 5-10 years.

A7. EXPLAIN ANY SPECIAL CIRCUMSTANCES THAT REQUIRE THE COLLECTION TO BE CONDUCTED IN A MANNER INCONSISTENT WITH THE GUIDELINES SET FORTH IN 5CFR 1320.6.

There are no special circumstances that require an inconsistency with the subject guidelines. The Code of Federal Regulations, 5CFR 1320.6, addresses public protection regarding the conduct of surveys. It describes provisions such as: displaying a valid OMB control number, informing potential participants that the survey is voluntary, complying with OMB directives to modify survey plans, and not imposing penalties on persons who choose not to participate. The OECD procedures to be used in this study are consistent with those guidelines.

A8. Compliance with 5 CFR 1320.8:

Federal Register, November 24, 2006, Page 67952, volume 7, No 226.

A8.1 Federal Register Notice (60 day)--Comments Summary

Nine comments were submitted to Docket Number FHWA 2006-26125 in response to the 60 Day Federal Register Notice. Two were non-supportive and 7 were supportive.

A8.1.1 Non-supportive comments

Both of these comments were submitted by private citizens.

Comment 1 – Barb Sachau---a private citizen. This person considers the proposed research to be a waste of taxpayers' money.

FHWA-NHTSA Response 1 – Congress and the research community and the rider community do not accept this view. They are in agreement that new countermeasures, based upon valid information, are needed to reduce the increasing toll of motorcycle crash-related losses.

Comment 2 – Ken Wiseman---a private citizen This person suggests that it is well established that crashes are caused by drunk riding and failure of auto drivers to see motorcycles and therefore, no further research is needed. He ascribes the increase in crashes and fatalities to the “Harley Davidson phenomena” of increased motorcycle sales, yet offers no scientific sources for his information.

FHWA-NHTSA Response 2 – The rate of motorcycle-related crashes and fatalities is estimated per 100 million vehicle miles of travel and is thus independent of the number of motorcycles being sold. There has not been a study of motorcycle crash causes conducted in the U.S. for over three decades, and the roadway and driving environment have undergone major changes that require a fresh look at the motorcycle crash problem.

A8.1.2 Supportive Comments

Four citizens and three agencies/organizations provided comments in support of the proposed research.

Comment 3 – An anonymous citizen. This person expressed initial reservations about spending tax dollars to study something that “should be common sense”, but concluded that a study such as this could result in saving lives by identifying potential dangers, and thus is warranted.

FHWA-NHTSA Response 3 – The study is intended to identify antecedents to motorcycle-related crashes that may be changed and with the effect of reducing crash outcomes and severities, and to estimate risk factors that are predictive of crashes to help identify and target countermeasures to reduce crash frequencies. Therefore this citizen’s observations are consistent with the objectives of this study.

Comment 4 – John Cloonan-- a private citizen. This person observed that is has been, “nearly 30 years since the Hurt Study” and that changes have occurred in motorcycle design and rider ship. He is thankful for federal research efforts to enhance motorcycle safety.

FHWA-NHTSA Response 4 – It is recognized that larger and more powerful motorcycles are common in the current fleet. It is also recognized that riders over 40 years of age are overrepresented in the crash and injury population, and that these characteristics differ with those in the earlier research (NHTSA, Traffic Safety Facts, 2005). Thus citizen’s observations are correct.

Comment 5 – Umesh Shankar is a NHTSA statistician, however this person is responding as a private citizen. The observations made by this person are underlined, and the FHWA-NHTSA responses appear below each underlined comment.

This study will provide much needed information.
It is agreed that this study is needed.

Case control methodology will yield relative risk for an event, not an absolute risk.
The observation that case-control methodology will yield only relative risk for an event, not absolute risk, is mostly correct. Case control methodology can only yield relative risk for a variable or a set of variables, but not for any specific event and not for any specific crash or event.

In the event of a fatality, some data (such as level of fatigue) may be missing for that rider. Efforts will be made to keep missing data to a minimum (described below in Section B.3). However, it should be noted that all research experiences some level of missing data. Statistical methods such as imputation may also be used to manage the problem of missing

data (as described in Section B.3 below).

Using in-depth crash investigation and the case control method is a good approach. This approach is considered to be optimal by the research team, and is specified in the OECD methodology.

This person also raised the following questions:

How will the study deal with missing data?

Section B.3 includes a discussion on missing data.

How will the study deal with confounding factors?

In case-control studies the possibility of confounding cannot be ruled out on a-priori grounds. Commonly used statistical methods to reduce the biasing effects of potential confounding factors on relative risk estimates will be followed. For example, one commonly used approach estimates relative risk with statistical methods that explicitly account for the effects of potential confounders on case-control differences. An alternative approach, involves a three step process: (1) identify matched groups of cases and controls such that potential confounders have similar distributions in each matched pair, (2) estimate relative risk by comparing cases to controls in matched pairs, (3) aggregate the group-specific relative risk estimates.

Can a single location satisfy all of the desirable sampling characteristics?

A description of the utility of a single location for data collection is provided in Section B1.1.

Comment 6 – David Thom –a private citizen. This person is interested in being able to compare the results to the studies conducted previously in Asia and Europe.

FHWA-NHTSA Response 6 – The research will be based upon the OECD methods employed in Thailand and Europe, as modified for use in the U.S., and therefore comparisons with other current and previous research will be possible.

Comment 7 - California Highway Patrol (CHP). The Commissioner stated his support for the overall concept of the research program; however he expressed concern about safety aspects of having the crash investigators respond immediately to the crash scene. The Commissioner also raised concerns about potential regulatory impediments to the release of non-redacted police accident reports to the investigators and about potential discrepancies in the conclusions stated in the CHP case report versus the research case report

FHWA-NHTSA Response 7 – The OECD Methodology uses the on-scene approach, while the involved vehicles and operators are still in place to perform the crash investigations. It is understood that to accomplish this safely, the controlling police agency must first secure the crash scene and gather data for their own investigation. However, it should be possible for researchers to join first responders at the scene and, under police guidance, collect those OECD data elements not available from police reports. This approach is currently used in the National Motor Vehicle Crash Causation Study that is also sponsored by NHTSA. Compensation for any

extraordinary police assistance could be negotiated as part of a pre-arranged agreement with the agency.

Comment 8 - The American Motorcyclist Association (AMA). This rider organization fully endorsed the research plans. The AMA specifically mentioned the coordination of the pilot and main studies; the guidance of the Project Working Group; the in-depth crash investigation/case control protocol, and the need for a robust sample size of at least 1,200 crashes and 2,400 controls.

FHWA-NHTSA Response 8 – The endorsement of the AMA will be an asset in gaining the cooperation of motorcyclists, and will contribute to the success of the study.

Comment 9 - The National Transportation Safety Board (NTSB) This independent Federal Agency recognized the need for this research, and was supportive of the efforts to coordinate the pilot and main studies. They endorse using “all relevant OECD variables” to enable comparisons with the Thailand and European studies. The NTSB also endorsed the dual procedures of in-depth crash investigations and the case control research approach. They recognize the need for limiting the study to a manageable geographic area that experiences a full range of motorcycle crash types under a wide range of conditions and with a wide range of rider characteristics. They suggested expanding the sample size (number of crash investigations and case controls), if additional resources become available in order to increase the statistical robustness of the results.

FHWA-NHTSA Response 9 – The NTSB recommendations help to promote safety and they support the efforts of the regulatory transportation agencies. As such their endorsement of this study is significant.

A8.2 Federal Register Notice (30 day)--Comments Summary

Two comments were submitted to Docket Number FHWA 2007-26843 in response to the 2nd Federal Register Notice. Both of these comments came from a single source, Advocates for Highway and Auto Safety (“Advocates”). A summary of the main points made by the Advocates in their comment appears below.

Comment 1 – Advocates for Highway Safety. This comment was focused exclusively on a Large Truck Crash Causation Study (LTCCS) being jointly administered by NHTSA and the Federal Motor Carrier Safety Administration (FMCSA).

FHWA-NHTSA Response 1 - This comment is not relevant to the Motorcycle Crash Studies for which approval is being sought, and will therefore not be addressed in this document.

Comment 2 – Advocates for Highway Safety - This comment was directed at the motorcycle studies for which approval is being sought. A listing of the main points made by the Advocates in their second comment together with the FHWA-NHTSA responses appears below

A study of the sources of motorcycle crashes is of crucial importance.

It is agreed that a study of the sources of motorcycle crash research is of crucial importance.

FHWA proposes using the OECD methodology to conduct the study.
The decision to use the OECD methodology was made by Congress, not FHWA.

Members of the “wider safety community” were not invited to provide input to the meeting of the “Project Working Group” held on June 15-16 where the OECD methodology was reviewed.

The June 15-16 meeting of the Project Working Group (*a non-policy making group*) included representatives from FHWA, NHTSA, NTSB, and non-government groups interested in motorcycle safety. FHWA and NHTSA did not extend invitations to all members of a “wider safety community” because such a group would have become too large to accomplish any work. However, FHWA and NHTSA will invite Advocates to participate in future working sessions of the Project Working Group.

No information on the Pilot Program or Project Working Group is contained in the docket for this Notice.

All information available to date on the “Pilot Program” has been included in the docket. The Federal Register Notice serves primarily as an announcement of the project and the general approach, not a description of work performed to date. The proposed data collection forms (the outcome of the meeting of the Project Working Group) were not placed in the docket because they are still under development. FHWA and NHTSA will place these forms in the public domain once the first draft is complete.

FHWA needs to provide a public explanation of why it is holding planned repeated meetings of a group with a defined membership consisting solely of representatives of the motorcycle industry and motorcycle community.

This statement is incorrect. The June project working session included representatives from NTSB and NHTSA. FHWA did not extend an invitation to the Advocates because it was a working session *not a policy meeting*. However, FHWA and NHTSA will welcome the Advocates to participate in future working sessions.

The lack of information on the Pilot Program or Project Working Group is evidence of a disregard of the public process of an agency soliciting advice and recommendations.

There is no “Pilot Program” as such. There is a pilot research project in planning and a main research project in planning. All information available to date on the Pilot and Main projects has been included in the docket. Also, it is to be noted that the Federal Register Notice serves primarily as an announcement of the project and the general approach, not a description of work performed to date. The proposed data collection forms (the outcome of the meeting of the Project Working Group) were not placed in the docket because they are still under development. FHWA and NHTSA will place these forms in the public domain once the first draft is complete.

FHWA at no point invokes Section 1914 and the Motorcycle Advisory Council as the instrument for the “consensus work” and repeated meetings of the Project Working Group”.

Section 1914 established the Motorcyclist Advisory Council. However this Council had not met as of June 15 when the Project Working Group met. Also, the Project Working Group is not part of the Advisory Council. It simply provides relevant information needed by the research projects.

The OECD methodology has not been placed in the docket

The OECD methodology has been in the public domain for several years, and therefore FHWA and NHTSA provided direction to the source of this methodology rather than a copy of this 649 page document.

Advocates opposes acquiring exposure data using interviews because it is impossible to remove subjectivity; only observational data should be relied upon to acquire exposure data.

Acquiring exposure data using interviews allows for the capture of data not readily available by observation, especially if the observations are made from a distance. For example, it is often difficult to determine the gender of a rider wearing a helmet and nearly impossible to determine the age. Variables such as distance ridden before crashing, blood alcohol content, licensing status, and riding experience also cannot be obtained by observation from a distance. However, FHWA and NHTSA are aware of biases generated from interview data, and will use appropriate methods to minimize any such biases. In addition, FHWA and NHTSA may acquire some exposure data by direct observation. The Federal Register Notice was explicit in stating that the final procedures for capturing exposure data have not been determined.

The OECD methodology is characterized as capable of producing causal explanations for the causes of crashes, but while case-control can produce odds ratios, it cannot rise to the level of causal explanations.

The title of both the pilot and main study use the word “cause” and in the case of the main study the language was taken directly from SAFETY-LU, section 5511 where it states that “The Secretary shall provide Grants.....for the purpose of conducting a comprehensive in-depth motorcycle crash causation study.” NHTSA and FHWA are aware of limitations on inferences of causality associated with the OECD methods that will be used in these studies. However, regarding the matter of inferring crash causes, two points can be made. First, for some variables, (e.g. Blood Alcohol Content (BAC), age, engine size), risks of crashing can be calculated for differing levels of the variable. If the data show that crash risk increases as the level of the variable increases, such concomitant variation strongly implicates the variable as a crash cause *when crashes are considered in the aggregate*. It is recognized that such data do not permit one to infer cause for any single crash. Second, even in the case of binary variables such as gender, if, for example, the data show that 89 percent of riders are male, but 98 percent of crash involved riders are male, then gender would be considered predictive of crashes. These kinds of data are still useful for countermeasure development although by no means would one argue that they suggest gender is a cause of crashes.

A9. PAYMENT OR GIFT TO RESPONDENTS.

No payment or gift will be provided to any respondent. The motorcycle industry and enthusiast groups are supportive of this effort, and therefore, we expect participation rates to be high. For example, recently the AMA provided \$100,000 in seed money to a fund to which they are asking others to contribute in order to assist OTC in acquiring the matching funds Congress required them to obtain to perform the study. This endorsement from the AMA is expected to enhance the level of cooperation from motorcyclists, and obviate the need for direct payments to participants.

A10. ASSURANCE OF CONFIDENTIALITY PROVIDED TO RESPONDENTS.

No personal identifiers will be included in any of the databases; the data on individual cases is not discoverable. However, Certificates of Confidentiality will be obtained from the Department of Health and Human Services and provided to each participant. An Informed Consent Document will be prepared by FHWA's and NHTSA's legal departments and will be provided to each participant. The Pilot Study contractor, Westat, Inc will use its Institutional Review Board (IRB) to review both the Certificate of Confidentiality and the Informed Consent Document and ensure that they are provided to each subject as this research is conducted. Examples of Certificates of Confidentiality and Informed Consent documents are provided in the Appendix.

Several levels of protection are planned to protect both the survey participants and the data files holding crash information. Westat staff and relevant subcontractors sign confidentiality pledges to protect all information gathered in the study. No personal identifiers regarding the crashes, vehicles or involved parties, are ever recorded in any system of records. All databases use password protection as do the computers and servers used to manage the data. Westat's computer network is protected using state of the art hardware and software applications. If a telephone number is acquired because of the need for a follow-up call to a respondent this number will not be recorded in any database and will not be retained once the follow-up call is completed.

For the main study, the University of Oklahoma's Transportation Center has an established secure facility that will be used for the data collected under this study. Their IRB will also review all experimental protocols.

A11. JUSTIFICATION OF COLLECTION OF SENSITIVE INFORMATION.

Information will be requested on rider behavior, training history, license type and status, health status, alcohol consumption, and blood alcohol levels (using preliminary breath testers). This information is necessary to determine risk factors for crashes. However, NO identifying information will be associated with this private information, and respondents will be advised that they may refuse any and all questions, as well as the breath test.

A12. ESTIMATE OF THE HOUR BURDEN OF THE COLLECTION OF INFORMATION ON THE RESPONDENTS.

The following table shows the sampling plan and estimated number of interviews assuming a maximum of 1200 crashes are investigated in the combined studies.

Crash Interviews:

Operators of motorcycles in single vehicle crashes =	540
Motorcycle operators and other drivers in Multi-vehicle crashes (660 crashes*2 persons) =	1320
Motorcycle Passenger interviews (0.10(of single vehicle crashes) *540 crashes + 0.10 (of multi-vehicle crashes)*660) =	120
Car passenger interviews cars (.68*660) =	449
<i>Total Crash Interviews (540 + 1320 + 120 + 449) =</i>	<i>2429</i>

Control interviews:

Controls for single vehicle motorcycle crashes (2 controls *540 crashes) =	1080
Controls for multi-vehicle crashes (1 motorcyclist * 660 crashes + other vehicle driver * 660 crashes) =	1320
Passenger Interviews =	0
<i>Total Control Interviews (1080+1320) =</i>	<i>2400</i>

Grand Total Crash plus Control Interviews (2429 + 2400) = 4829

The Estimated Average Burden per Interviewee is calculated as 25 minutes for crash interviews and 25 minutes for control individuals’ interviews. The Estimated Total (Not Annual) Burden Hours estimates are based on the total of 2,429 crash interviews to be conducted at an average length of 25 minutes each and 2,400 control interviews to be conducted at an average length of 25 minutes each for a total one-time burden on the public of 120,725 minutes or 2012 hours.

A13. ESTIMATE OF THE TOTAL COST BURDEN TO RESPONDENTS RESULTING FROM THE COLLECTION OF INFORMATION.

This collection of information will impose no costs to participants beyond the time they voluntarily provide.

A14. ESTIMATES OF ANNUALIZED COSTS TO THE FEDERAL GOVERNMENT.

The following figures come from the awards of the “Pilot Study – Motorcycle Crash Causes and Outcomes” contract and the “Motorcycle Crash Causation Study” grant. These are total, not annual amounts.

Contract	Estimated Total Cost
Motorcycle Crash Causes and Outcomes (Pilot Study)	\$ 467,000
Motorcycle Crash Causation Study (Main Study)	\$2,816,000*
Total Federal Cost	\$3,283,000

*The Grantee is required to contribute ½ the cost of this project from its own resources and/or from resources available to it.

A15. EXPLAIN THE REASONS FOR ANY PROGRAM CHANGES OR ADJUSTMENTS.

This is a new information collection. It is a one time research project.

A16. FOR COLLECTIONS OF INFORMATION WHOSE RESULTS WILL BE PUBLISHED, OUTLINE PLANS FOR TABULATION AND PUBLICATION.

A 16.1 Motorcycle Crash Causes and Outcomes – Pilot Study

The Pilot Study will test the methodology on about 35 crashes. No conclusions will be drawn from these data because the sample is too small. All collected data from the 35 crashes will, however, be encoded into ASCII files, and summary statistics will be available on broad categories such as the age and gender of involved motorcyclists, types of motorcycles, crash configurations, etc. These data will be pooled with the main study master file data (see A16.2) that will follow directly. Procedures used in conducting this pilot study and any adjustments to the OECD Methodology that were adopted will be described in detail in the pilot final report which will be available from NHTSA.

A16.2 Motorcycle Crash Causation Study- Main Study

This study will produce an FHWA-owned master data file with all personal identifiers removed. A series of summary reports describing these types of topics are planned: precipitating antecedents to the crashes, identification of risk factors for crashes such as age, gender, alcohol use, motorcycle size, motorcycle type, road conditions, time of day, etc.; estimates of the relative importance of these risk factors in predicting crashes. A final report will be published that will describe the major crash types, the most frequent antecedent events that if altered would have resulted in a reduced severity or no-crash outcome, and the variables that are most over-involved in crashes when compared with their overall incidence in the sample. These antecedent events and risk factors will form the basis for recommending countermeasures. Such recommendations will also be included the final report.

A17. APPROVAL FOR NOT DISPLAYING THE EXPIRATION DATE OF COLLECTION.

There are no reasons this display would be inappropriate. OMB approval will be shown on all collection instruments.

A18. EXCEPTION TO THE CERTIFICATION STATEMENT.

No exceptions are requested.