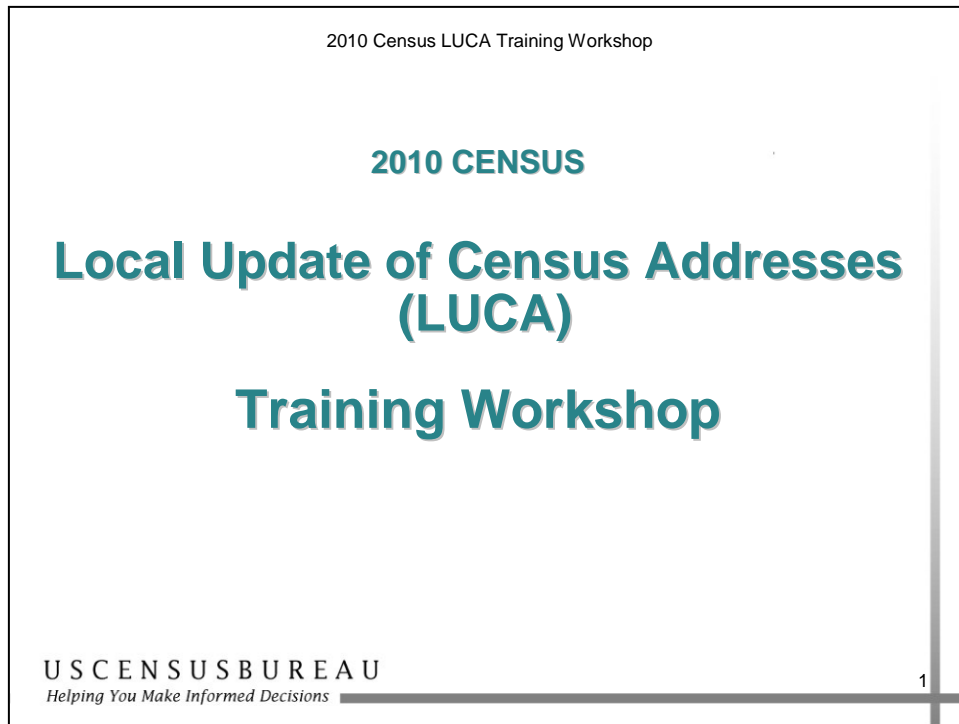

1 Welcome and Introduction to LUCA



Welcome

2010 Census LUCA Training Workshop

Welcome and Introductions

- Welcome to the LUCA Training Workshop!
- Please make sure you sign the sign-in sheet before you leave today.



U S C E N S U S B U R E A U
Helping You Make Informed Decisions

2

Welcome and Introductions

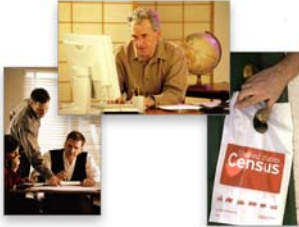
Welcome to the LUCA Program Training Workshop. The first section will be an introduction to the importance of the LUCA program and the LUCA schedule.

Welcome

2010 Census LUCA Training Workshop

Topics

- Welcome and Introduction to LUCA
- Before we begin; key terms, concepts, and LUCA materials
- LUCA participation options
- Updating the Census Bureau's Address List
- Address Count review
- Map updates
- LUCA materials submission



U S C E N S U S B U R E A U
Helping You Make Informed Decisions

3

Topics

These are the topics we will cover in today's LUCA Training Workshop.

Welcome

2010 Census LUCA Training Workshop

Objectives

- Describe the purpose of the LUCA program
- Describe the timing constraints for each phase of the program

U S C E N S U S B U R E A U
Helping You Make Informed Decisions

4

Objectives

Upon completion of this lesson, you will be able to describe the:

- Purpose of the LUCA program.
- Timing constraints of each phase of the LUCA program.

Welcome

2010 Census LUCA Training Workshop

Workshop Schedule

- Today's session is approximately five hours
- Breaks approximately every 90 minutes
- Ask questions as they come up!

U S C E N S U S B U R E A U
Helping You Make Informed Decisions

5

Workshop Schedule

Today's workshop will last approximately 5 hours.


Please ask any questions you have as they come up. Our goal is for you to leave with a clear understanding of the LUCA program.

Program Overview

2010 Census LUCA Training Workshop

What is LUCA?

- 2010 Decennial Census Program
- Allows tribal, state, and local governments to help update the Census Bureau's Address List
- Authorized by the Census Address List Improvement Act of 1994



U S C E N S U S B U R E A U
Helping You Make Informed Decisions

7

What is LUCA?

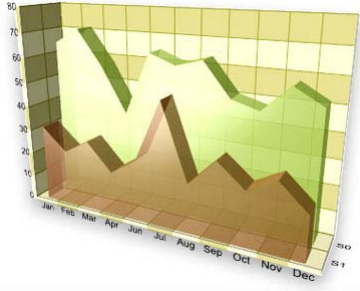
- Decennial census partnership program that allows tribal, state, and local governments to review and update the Census Bureau's Address List.
- Uses local knowledge in updating the Census Bureau's Address List used to deliver questionnaires for the decennial census and is authorized by the Census Address List Improvement Act of 1994.

Program Overview

2010 Census LUCA Training Workshop

How Census Data are Used

- Apportionment of Congressional seats
- Appropriation of Federal funds to state, tribal, and local governments
- State funds distribution
- Accurate local statistical data
- Data for community



U S C E N S U S B U R E A U
Helping You Make Informed Decisions

8

How Census Data are Used

Census data are used in a number of important ways, from apportioning Congressional seats to determining how funding is appropriated for a number of Federal and state programs.

Program Overview

Top 50 Formula Grants

Below is a list of 50 of the top formula grants compiled by the Northeast Midwest Institute:

Agriculture Department

Child and Adult Care Food Program
National School Lunch Program
School Breakfast Program
Special Supplemental Nutrition Program for Women, Infants, and Children (WIC)
State Administrative Matching Grants for Food Stamp Program

Education Department

Adult Education
Class Size Reduction
Eisenhower Professional Development State Grants
Impact Aid
Innovative Education Program Strategies
Rehabilitation Services -- Vocational Rehabilitation Grants to States
Safe and Drug-Free Schools and Communities -- State Grants
School Renovation Grants
Special Education -- Grants for Infants and Families with Disabilities
Special Education -- Grants to States
Special Education -- Preschool Grants
Technology Literacy Challenge Fund Grants
Title I Grants to Local Educational Agencies
Vocational Education -- Basic Grants to States

Environmental Protection Agency

Capitalization Grants for Clean Water State Revolving Funds
Capitalization Grants for Drinking Water State Revolving Funds

Health and Human Services

Adoption Assistance
Block Grants for Substance Abuse Prevention and Treatment
Child Care and Development Block Grant
Child Care and Development Fund
Child Support Enforcement -- Federal Share of State and Local Administrative Costs
Community Services Block Grant
Foster Care -- Title IV-E
Head Start
HIV CARE Formula Grants
Low Income Home Energy Assistance Program
Maternal and Child Health Services Block Grant

Program Overview

Top 50 Formula Grants (cont.)

Medicaid Grants to States
Social Services Block Grant
Special Programs for the Aging
State Children's Health Insurance Program
Temporary Assistance for Needy Families (TANF)

Housing and Urban Development Department

Community Development Block Grants (Entitlement Grants)
Community Development Block Grants (State Program)
HOME Investment Partnerships Program

Justice Department

Byrne Formula Grant Program (Drug Control and System Improvement)

Labor Department

Employment Service
Unemployment Insurance Program
Workforce Investment Act (WIA) -- Adult Employment and Training Activities
Workforce Investment Act (WIA) -- Dislocated Worker Employment and Training Activities
Workforce Investment Act (WIA) — Youth Activities

Transportation Department

Airport Improvement Program
Federal Transit Capital Investment Grants
Federal Transit Urbanized Area Formula
Highway Planning and Construction (Federal-aid Highways)


The Medicaid program is by far the largest of the federal formula grants to state and local governments, amounting to 44.7% of the estimated fiscal year 2001 total.

Program Overview

2010 Census LUCA Training Workshop

LUCA Program Importance

- Accurate census data ensures communities receive entitlements
- Participation is the first step to complete enumeration



U S C E N S U S B U R E A U
Helping You Make Informed Decisions

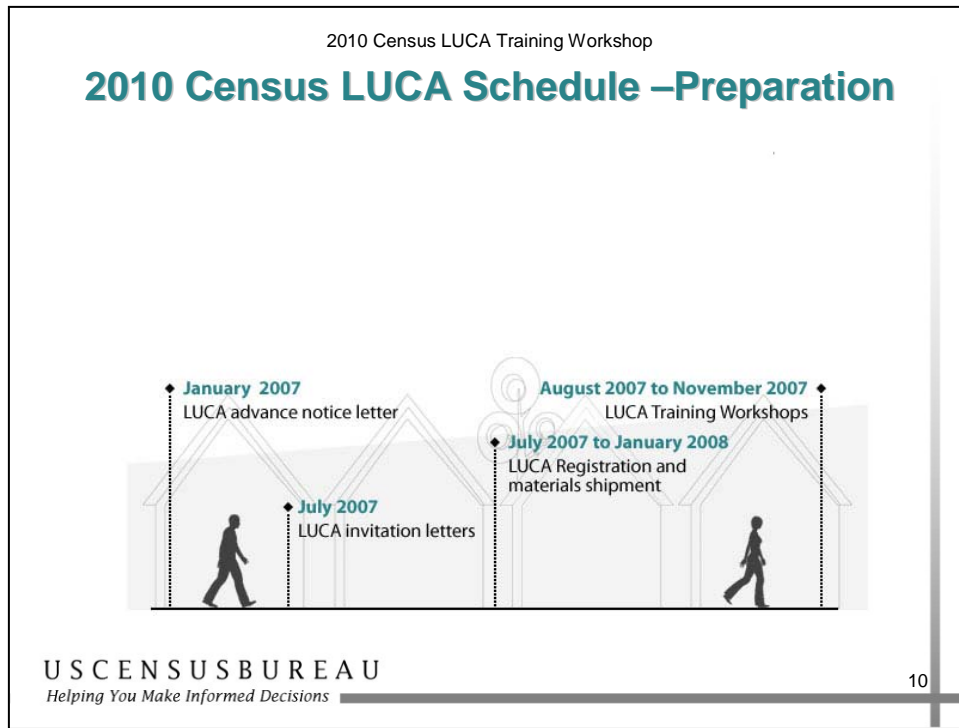
9

LUCA Program Importance

Your participation makes a difference!

Local government participation helps to ensure complete enumeration and an accurate decennial census for your community.

2010 Census LUCA Schedule

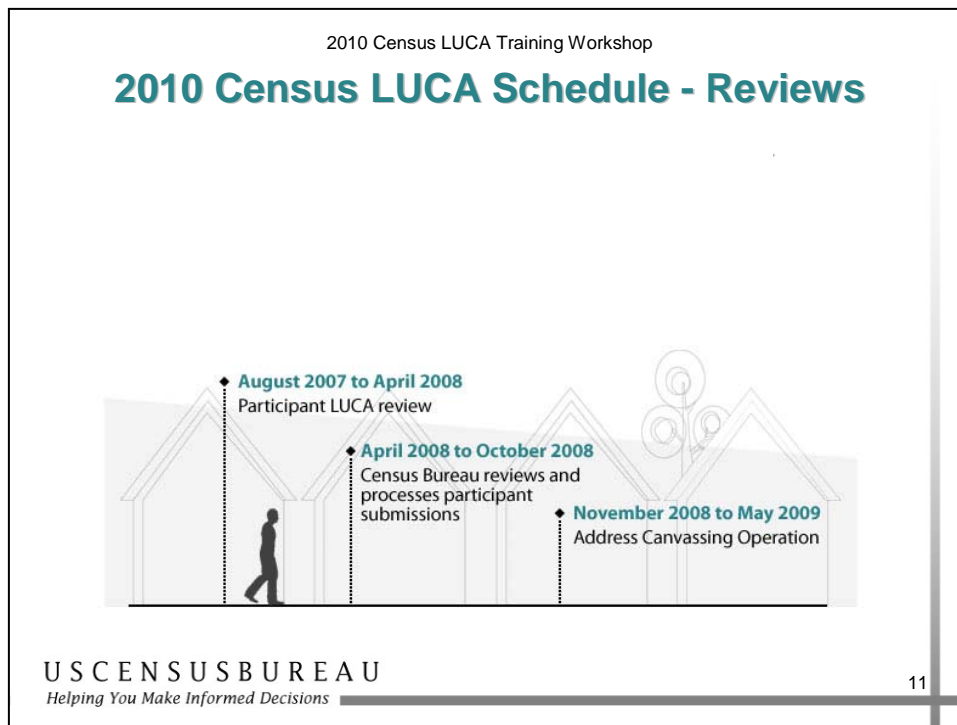


LUCA Preparation

This slide lists important dates leading up to the start of the LUCA program.

- If your government provides legal boundary updates during LUCA, the Census Bureau will not contact your government to participate in the 2008 Boundary and Annexation Survey (BAS). You must register to participate in the LUCA program before October 31, 2007 to receive your 2008 BAS materials with your LUCA program materials.

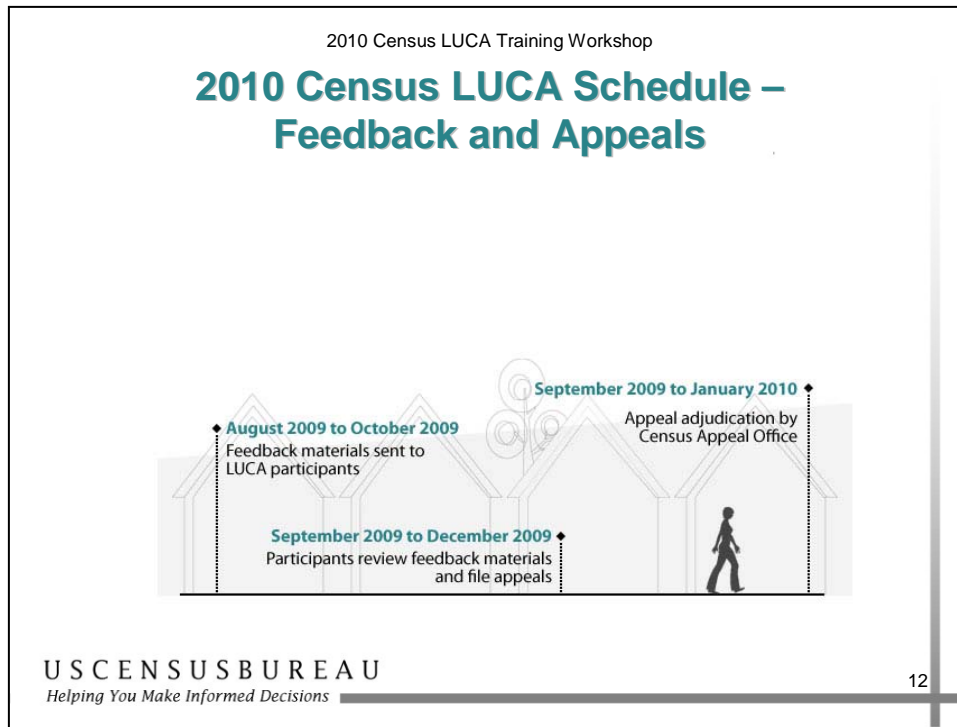
2010 Census LUCA Schedule



LUCA Review

This slide lists important dates for the LUCA participant review.

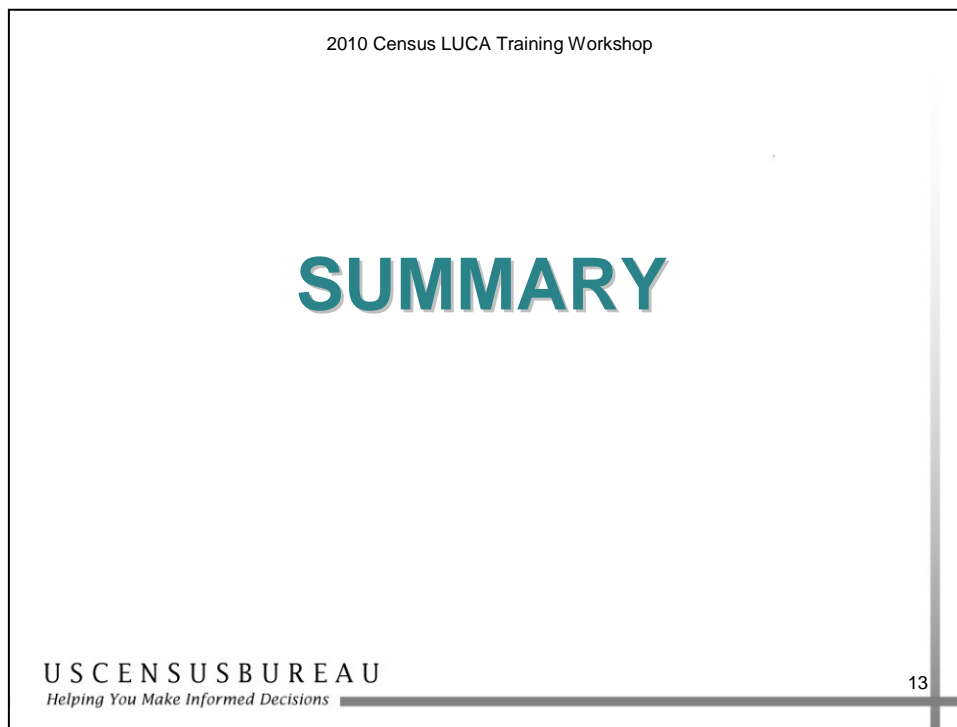
2010 Census LUCA Schedule



LUCA Feedback and Appeals

This slide lists important dates for the LUCA feedback and depending on the LUCA option you choose, file appeals for any address discrepancies.

Summary



Now that we have covered the purpose, importance, and schedule of the LUCA program, we will move on to Section 2 and discuss the key terms and concepts you will need to understand for today's workshop.

We will also present an overview of the LUCA materials.