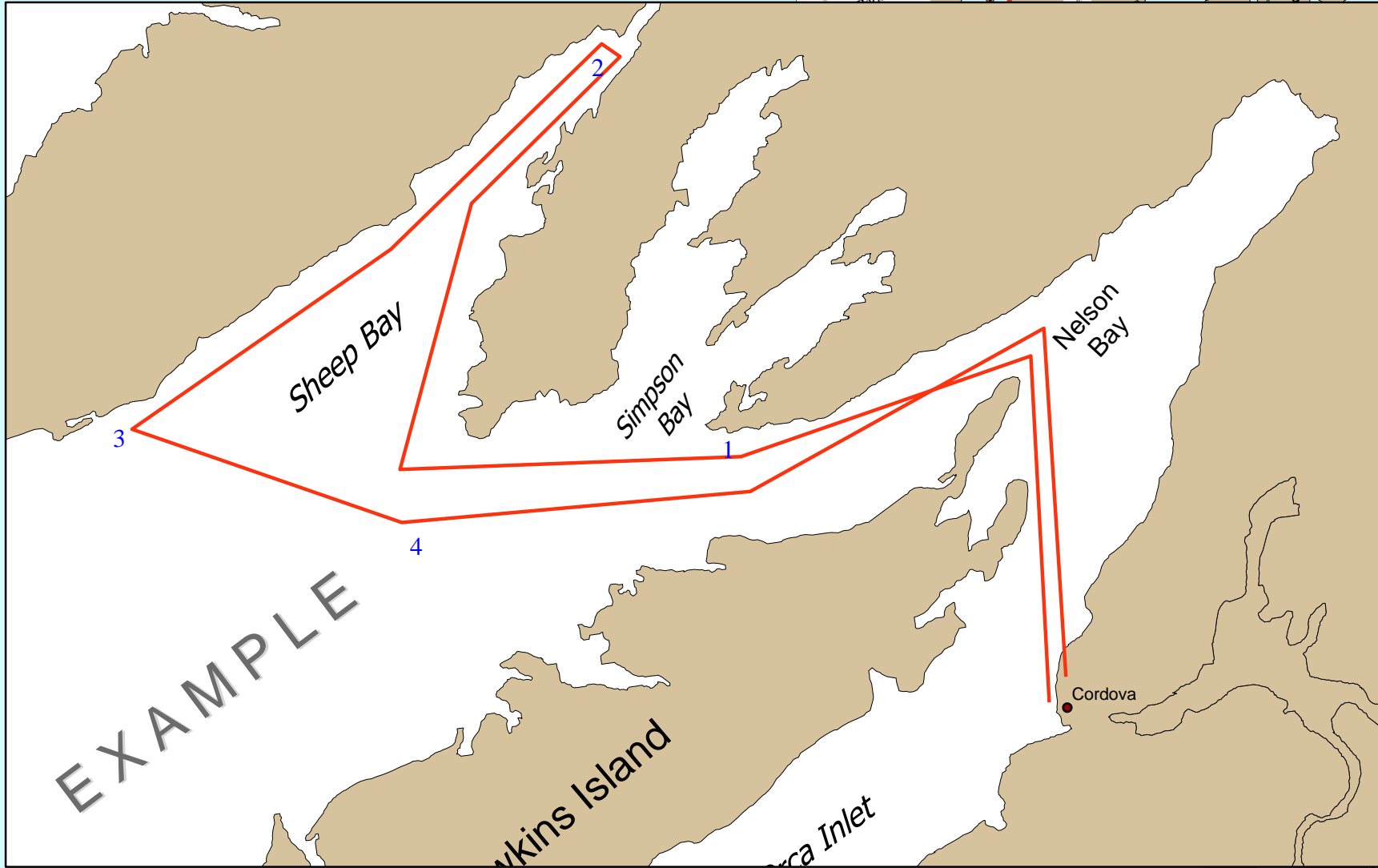
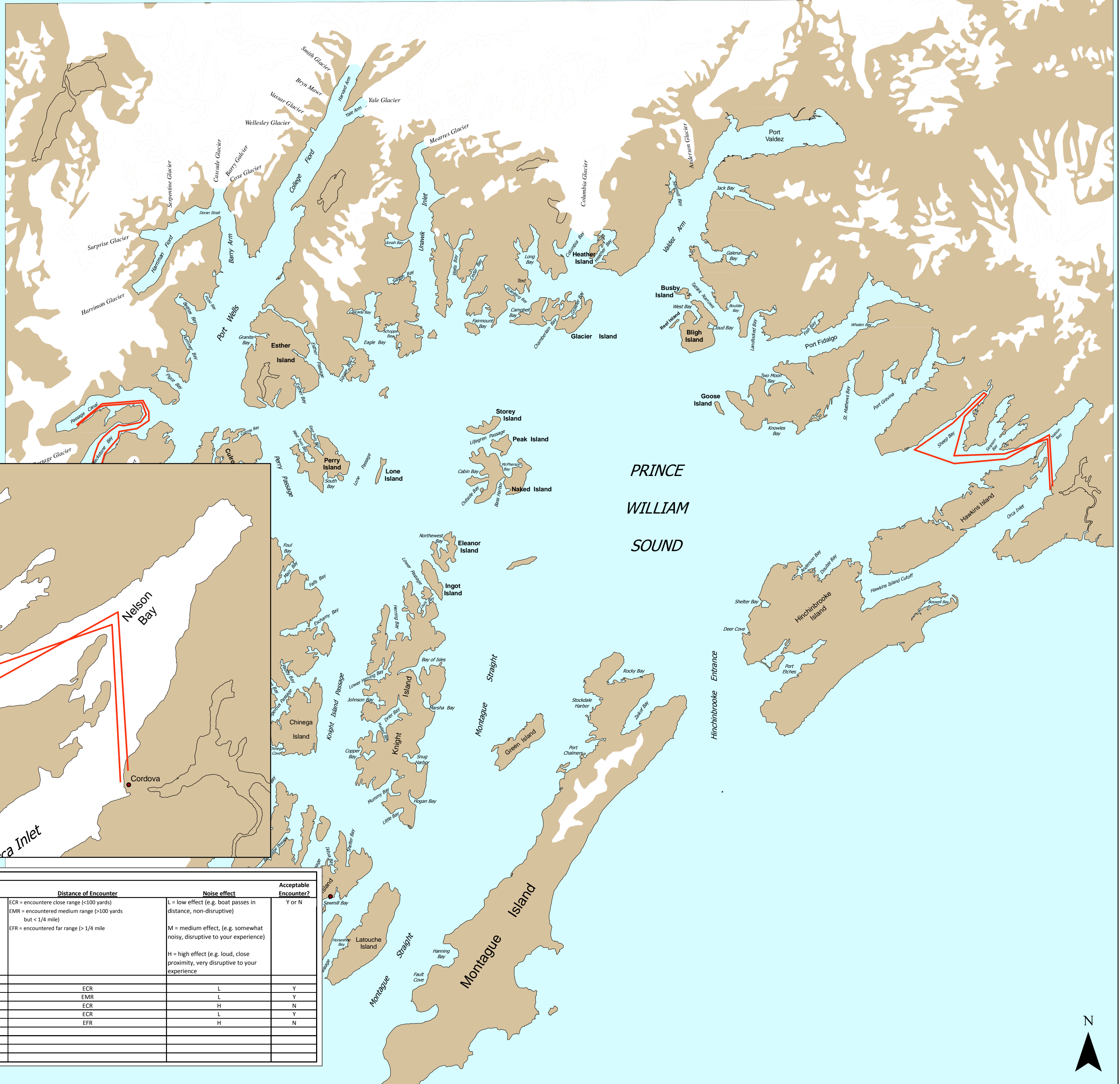


Instructions for Recording your Trip on the Map:

Using the map and the space below, please describe your travel route during your current trip into Prince William Sound. Please describe your trip from the date you launched or left harbor (e.g. Whittier, Cordova, etc) to the date ended your trip in PWS.

Steps

- Draw your route with a line on the adjacent map. Please place an * asterisk where at your initial start location. See example map.
- Number (1,2,3...) all places where you **stopped longer than 15 minutes** (i.e. anchored/moored, went ashore, camped, etc). Please be sure to write the **date/time, duration of the stop, the activity and whether you went ashore** in the table provided. For multiple activities, please mark the activities in the next lines with the same site number (See following example).
- Finally, please record any encounters throughout your trip. For multiple encounters during the same stop/camp, mark the encounters in the next lines (See following example). We are also interested in some information about your visit to these places. Please answer the following questions for each place you visit during your trip to Prince William Sound. You are welcome to make any other notations you feel will assist us in understanding more about your recreational outing.



Stop Information				Encounter Information				
Site #	Date / Time Arrived	Duration of Stop	Activity	Did you go Ashore? Y or N	Vessel or Group	Distance of Encounter	Noise effect	Acceptable Encounter? Y or N
1	7/2/2007 1030	2 hours	Fished from boat	N	K	ECR = encountered close range (<100 yards)	L = low effect (e.g. boat passes in distance, non-disruptive)	Y
2	7/2/2007 1400	30 minutes	Viewed bears	N	CC	EMR = encountered medium range (>100 yards but < 1/4 mile)	L	Y
3	7/2/2007 1700	16 hours	Camped in Comfort Cove	Y	OST	EFR = encountered far range (> 1/4 mile)	H	N
3	7/2/2007				CC		L	Y
4	7/3/2007 1100	2 hours	Fished from Boat	N	TC		H	N
5	7/3/2007 1600		Arrived back in Cordova					

