

Adult Influenza Hospitalization Surveillance Project Schematic (Discharge Audit)

The strategy employed for conducting the match may differ somewhat by site. Most sites will be following the schematic of Figure 1a, but some sites may be limiting ICD9 codes from the start, as outlined in Figure 1b.

For some participating sites, the distribution of ICD9 codes for laboratory-confirmed influenza-associated hospitalized cases may have a significant proportion of cases that coded with ICD9s other than 480-487. In such cases, the use of Current Procedural Terminology (CPT) codes for influenza testing may provide an alternative method to identify potentially missed cases. This alternate method of identifying cases is depicted in Figure 1b.

FIGURE 1A

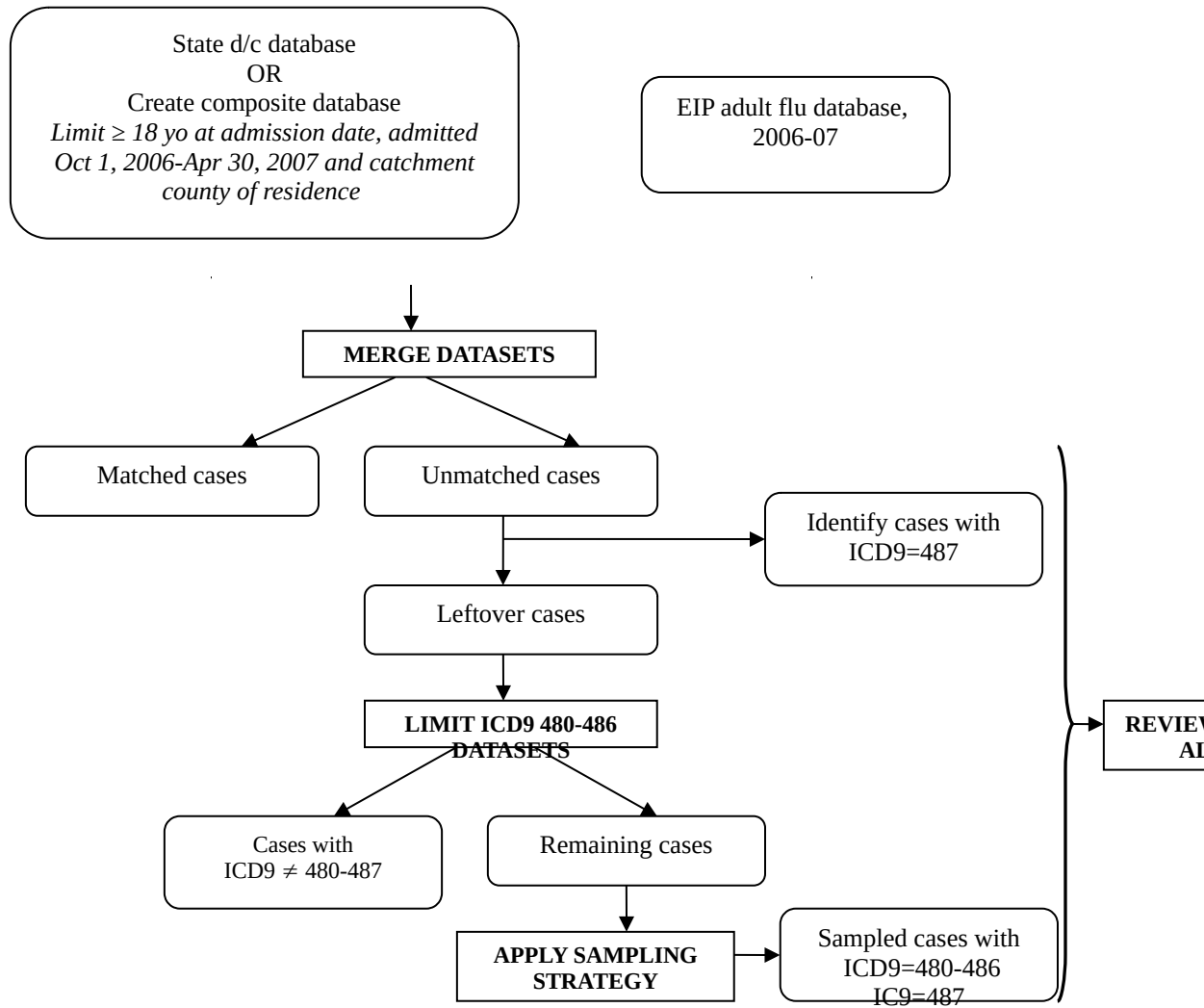


Figure 1B. Adult Influenza Hospitalization Surveillance Project Schematic

