

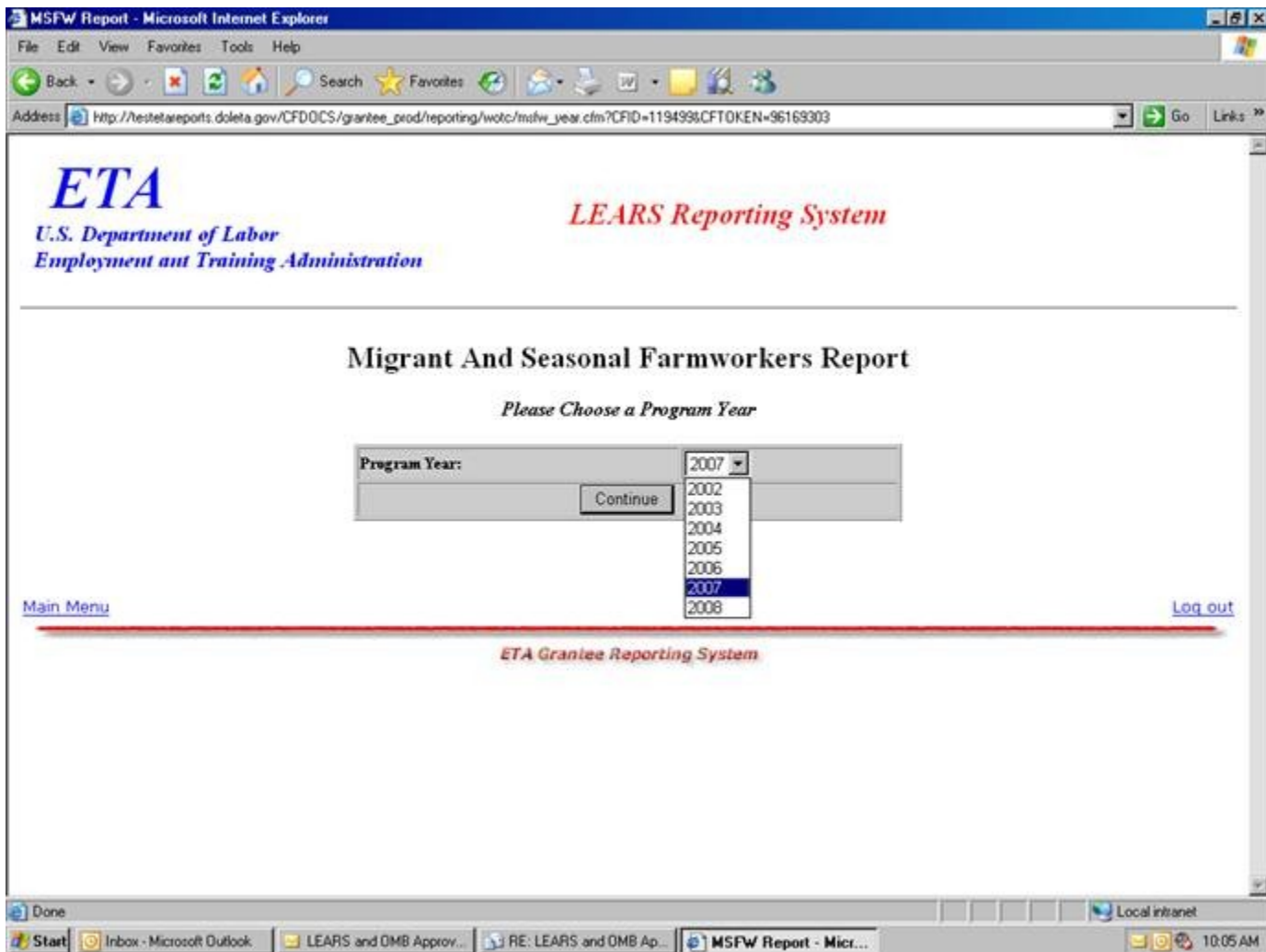
Step 1 - Type this url into the web browser:
<http://testetareports.doleta.gov>



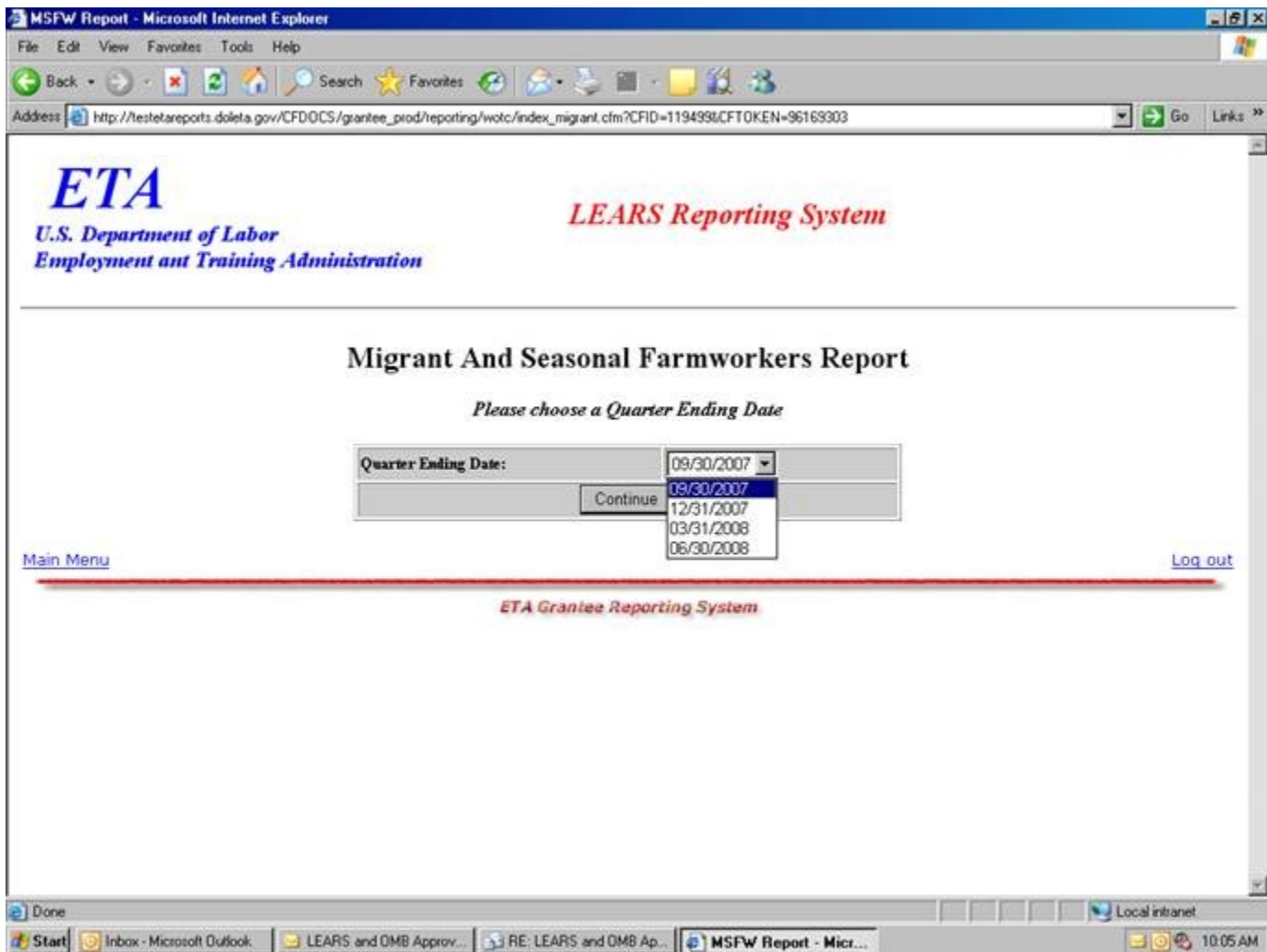
Step 2 - Enter the password: **msfwtest**

Step 3 - Click on Login

Step 4 - Select Program Year from the drop-down (2007 is the most recent).



Step 5 - Select a reporting quarter from the drop down.



Step 6 – Select a report, either Part I, Part II, Part III, or Part IV.

MSFW Report - Microsoft Internet Explorer

File Edit View Favorites Tools Help

Back Forward Stop Refresh Home Search Favorites

Address http://testetareports.doleta.gov/CFD0CS/grantee_prod/reporting/wotc/menu_migrant.cfm?CFID=119499&CFTOKEN=96169303 Go Links

ETA
U.S. Department of Labor
Employment and Training Administration

LEARS Reporting System

**Migrant And Seasonal Farmworkers Report for Rhode Island,
Quarter Ending: 09/30/2007**

(Report was State Certified on 04/29/2008 04:06 P.M.)

Please choose a report:

MSFW's Report:

- Services to Migrant And Seasonal Farmworkers Report (Part1)
- Services to Migrant And Seasonal Farmworkers Report (Part1)**
- Nature of Problem/Accomplishments (Part2)
- Services Provided Migrant and Seasonal Farmworkers Equity Ratio Indicators (Part3)
- Services Provided Migrant and Seasonal Farmworkers Minimum Service Level Indicators (Part4)

[Main Menu](#) [Log out](#)

ETA Grantee Reporting System

Start | Inbox - Microsoft Outlook | LEARS and OMB Approv... | RE: LEARS and OMB Ap... | MSFW Report - Micr... | Local intranet | 10:06 AM