

Attachment 6

Sample Reports



- Home Page
- General Info ▶
- Services Info ▶
- Disclaimer
- Privacy Policy
- Data Collection Tools ▶
- Data Entry ▶
- Technical Assistance
- Reports ▼**
- Administrative Services
- Best Practices
- Contact Us
- Data Download ▶
- Search
- Telephone Log

Linked Reports:

TCE/HIV

1 / 10

100%

Intake Coverage Report

GFA Program: TCE/HIV

Grantee Information	Client Target (To-Date) ₁	Intake Received (To-Date) ₂	Intake Coverage Rate (To-Date) ₃
African American Health Coalition, Inc. African American TCE Project Portland, OR TI14467 Performance Period: 09/30/02 - 09/29/07	776	750	96.6%
AIDS Interfaith Network New Haven, CT TI14492 Performance Period: 09/30/02 - 09/29/07	265	231	87.2%
AIDS Services Center, Inc., TCE/HIV Anniston, AL TI13188 Performance Period: 09/30/01 - 11/24/06 **	150	142	94.7%



- Home Page
- General Info ▶
- Services Info ▶
- Disclaimer
- Privacy Policy
- Data Collection Tools ▶
- Data Entry ▶
- Technical Assistance
- Reports ▼**
- Administrative Services
- Best Practices
- Contact Us
- Data Download ▶
- Search
- Telephone Log

Linked Reports:

Performance Period: 09/30/02 - 09/29/07			
Walden House, Inc. TCE/HIV San Francisco, CA TI15892 Performance Period: 09/30/03 - 09/30/08	407	410	100.7%
Westcare Florida, Inc. TCE/HIV St. Petersburg, FL TI15778 Performance Period: 09/30/03 - 09/30/08	247	190	76.9%
Wyckoff Heights Medical Center Brooklyn, NY TI14464 Performance Period: 09/30/02 - 09/29/07	694	558	80.4%
Total: 88 Grantee(s)	24,532	24,760	100.9%





- Home Page
- General Info ▶
- Services Info ▶
- Disclaimer
- Privacy Policy
- Data Collection Tools ▶
- Data Entry ▶
- Technical Assistance
- Reports ▼**
- Administrative Services
- Best Practices
- Contact Us
- Data Download ▶
- Search
- Telephone Log

Linked Reports:

Follow-up Rate Report

Selected GFA Program(s): SCY
Selected Follow-up Type: 3 Month Follow-up
All Years (Separated)

GFA Program: Strengthening Communities - Youth
FFY: 2002 **Quarter:** All

Grantee Information	3-Month Follow-ups Due ¹	3-Month Follow-ups Received ²	3-Month Follow-ups Rate
American Indian Prevention Coalition, SCY Phoenix, AZ TI13309 Performance Period: 09/30/02 - 12/30/06**	0	0	N/A
Chestnut Health Systems, SCY Bloomington, IL TI13356 Performance Period: 09/30/02 - 09/30/07**	0	0	N/A
Inter-Tribal Council, SCY			



- Home Page
- General Info ▶
- Services Info ▶
- Disclaimer
- Privacy Policy
- Data Collection Tools ▶
- Data Entry ▶
- Technical Assistance
- Reports ▼**
- Administrative Services
- Best Practices
- Contact Us
- Data Download ▶
- Search
- Telephone Log

Linked Reports:

All Years (Separated)

GFA Program: Strengthening Communities - Youth
FFY: 2007 Quarter: All

Grantee Information	3-Month Follow-ups Due ¹	3-Month Follow-ups Received ²	3-Month Follow-ups Rate
University of Alabama, SCY Tuscaloosa, AL TI13340 Performance Period: 09/30/02 - 09/30/07**	0	0	N/A
University of Iowa, SCY Iowa City, IA TI13354 Performance Period: 03/31/03 - 03/30/07	0	0	N/A
Total (Year Summary):	0	0	N/A
Total: 12 Grantee(s)	2,742	2,276	83.0%

Notes:

N/A = Data Not Available



- Home Page
- General Info ▶
- Services Info ▶
- Disclaimer
- Privacy Policy
- Data Collection Tools ▶
- Data Entry ▶
- Technical Assistance
- Reports ▼**
- Administrative Services
- Best Practices
- Contact Us
- Data Download ▶
- Search
- Telephone Log

Linked Reports:

Recovery Community Services Program - Services

Follow-up Rate Report

Selected GFA Program(s): RCSP
Selected Follow-up Type: 6 Month Follow-up
All Years (Separated)

GFA Program: Recovery Community Services Program - Services
FFY: 2004 Quarter: All

Grantee Information	6-Month Follow-ups Due ¹	6-Month Follow-ups Received ²	6-Month Follow-ups Rate
AIDS Service Center of Lower Manhattan, Inc. New York, NY TI14833 Performance Period: 07/01/04 - 04/29/07	0	0	N/A
Asian Pacific American Community of Recovery Network			



- Home Page
- General Info ▶
- Services Info ▶
- Disclaimer
- Privacy Policy
- Data Collection Tools ▶
- Data Entry ▶
- Technical Assistance
- Reports ▼**
- Administrative
- Services
- Best Practices
- Contact Us
- Data Download ▶
- Search
- Telephone Log

Linked Reports:

Performance Period: 10/01/06 - 12/28/10			
Walden House, Inc. San Francisco, CA TI16198 Performance Period: 09/30/04 - 09/29/08	0	0	N/A
Welcome Home Ministries Oceanside, CA TI16279 Performance Period: 09/30/04 - 09/29/08	0	0	N/A
White Bison, Inc. Colorado Springs, CO TI16156 Performance Period: 09/30/04 - 09/29/08	0	0	N/A
Women In New Recovery Our Common Welfare RCSP Mesa, AZ TI14685 Performance Period: 07/01/04 - 04/29/07	0	0	N/A
Total (Year Summary):	0	0	N/A
Total: 25 Grantee(s)	2,513	2,092	83.2%

Notes:

N/A = Data Not Available

*** = Print Non-Cost Extension Data



- Home Page
- General Info ▶
- Services Info ▶
- Disclaimer
- Privacy Policy
- Data Collection Tools ▶
- Data Entry ▶
- Technical Assistance
- Reports ▼**
- Administrative Services
- Best Practices
- Contact Us
- Data Download ▶
- Search
- Telephone Log

Linked Reports:

Targeted Capacity Expansion

1 / 23

100%

Follow-up Rate Report

Selected GFA Program(s): TCE
Selected Follow-up Type: 12 Month Follow-up
All Years (Separated)

GFA Program: Targeted Capacity Expansion
FFY: 2002 Quarter: All

Grantee Information	12-Month Follow-ups Due ¹	12-Month Follow-ups Received ²	12-Month Follow-ups Rate
Spokane County Board of Commissioners, TCE Spokane, WA TI13612 Performance Period: 09/30/02 - 11/24/06**	0	0	N/A
Total (Year Summary):	0	0	N/A



- Home Page
- General Info ▶
- Services Info ▶
- Disclaimer
- Privacy Policy
- Data Collection Tools ▶
- Data Entry ▶
- Technical Assistance
- Reports ▼**
- Administrative Services
- Best Practices
- Contact Us
- Data Download ▶
- Search
- Telephone Log

Linked Reports:

Targeted Capacity Expansion

Follow-up Rate Report

Selected GFA Program(s): TCE
Selected Follow-up Type: 12 Month Follow-up
All Years (Separated)

GFA Program: Targeted Capacity Expansion
FFY: 2007 **Quarter:** All

Grantee Information	12-Month Follow-ups Due ¹	12-Month Follow-ups Received ²	12-Month Follow-ups Rate
WY Substance Abuse Treatment and Recovery Center Sheridan, WY TI17417 Performance Period: 07/01/05 - 06/30/07	0	0	N/A
Yamhill County Chemical Dependency McMinnville, OR	0	0	N/A



- Home Page
- General Info ▶
- Services Info ▶
- Disclaimer
- Privacy Policy
- Data Collection Tools ▶
- Data Entry ▶
- Technical Assistance
- Reports ▼**
- Administrative Services
- Best Practices
- Contact Us
- Data Download ▶
- Search
- Telephone Log

Menu Previous



Intake Graph Report

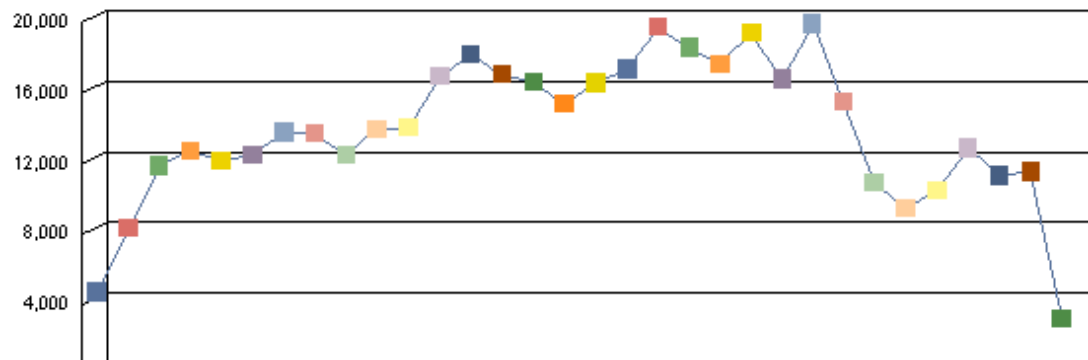
GFA Program: Screening Brief Intervention Referral and Treatment

Grantee: All

Grant Number: All

Modality: All

Intake Graph (Monthly for FFY - All)





- Home Page
- General Info ▶
- Services Info ▶
- Disclaimer
- Privacy Policy
- Data Collection Tools ▶
- Data Entry ▶
- Technical Assistance
- Reports ▼**
- Administrative Services
- Best Practices
- Contact Us
- Data Download ▶
- Search
- Telephone Log

Menu Previous

Graph Key:
Vertical axis = Intakes
Horizontal axis = Months

Month / Year	Intakes
4 / 2004	4,846
5 / 2004	8,429
6 / 2004	11,918
7 / 2004	12,779
8 / 2004	12,199
9 / 2004	12,553
10 / 2004	13,845
11 / 2004	13,753
12 / 2004	12,520
1 / 2005	13,991
2 / 2005	14,096
3 / 2005	16,982
4 / 2005	18,216
5 / 2005	17,084
6 / 2005	16,656
7 / 2005	15,412
8 / 2005	16,594
9 / 2005	17,349
10 / 2005	19,745



- Home Page
- General Info ▶
- Services Info ▶
- Disclaimer
- Privacy Policy
- Data Collection Tools ▶
- Data Entry ▶
- Technical Assistance
- Reports ▼**
- Administrative Services
- Best Practices
- Contact Us
- Data Download ▶
- Search
- Telephone Log

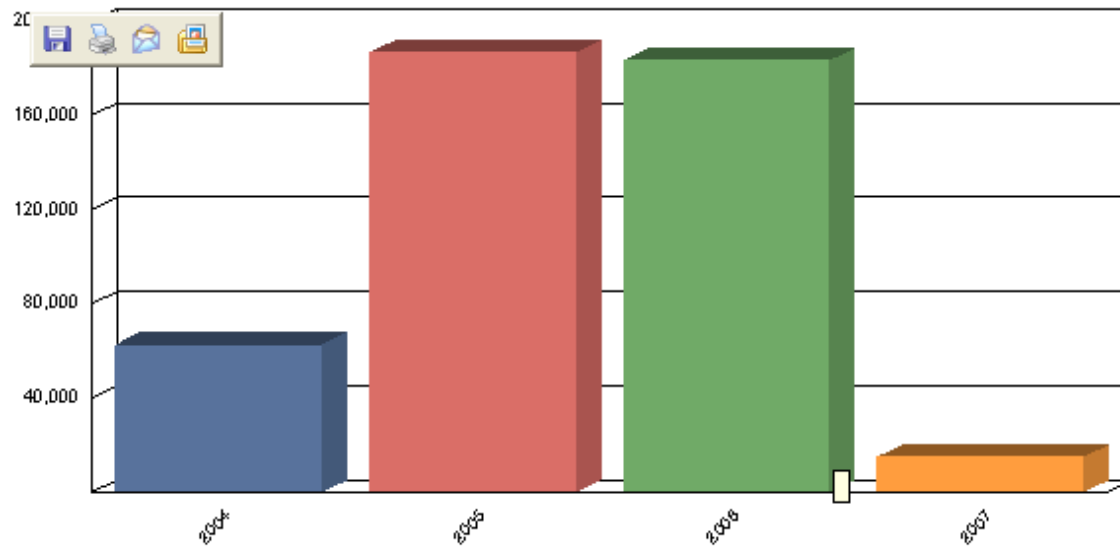
Menu

Previous

Grant Number: All

Modality: All

Intake Graph (Entire period FFY - All)



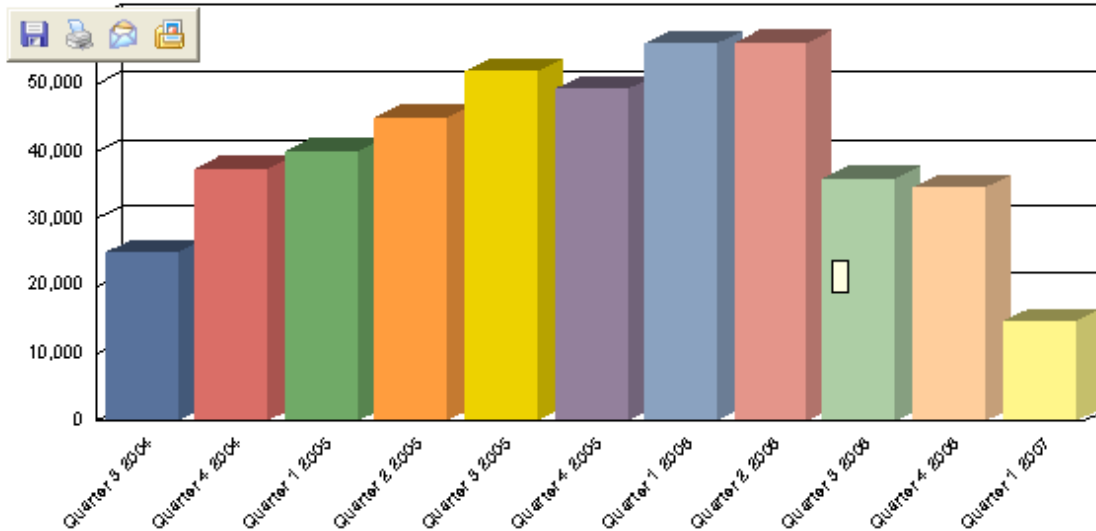
Graph Key:
Vertical axis = Intakes
Horizontal axis = Years



- Home Page
- General Info ▶
- Services Info ▶
- Disclaimer
- Privacy Policy
- Data Collection Tools ▶
- Data Entry ▶
- Technical Assistance
- Reports ▼**
- Administrative Services
- Best Practices
- Contact Us
- Data Download ▶
- Search
- Telephone Log

Menu Previous

Intake Graph (Quarterly for FFY - All)



Graph Key:
Vertical axis = Intakes
Horizontal axis = Quarters

Quarter / Year	Intakes
3 / 2004	25,193



- Home Page
- General Info ▶
- Services Info ▶
- Disclaimer
- Privacy Policy
- Data Collection Tools ▶
- Data Entry ▶
- Technical Assistance
- Reports ▼**
- Administrative Services
- Best Practices
- Contact Us
- Data Download ▶
- Search
- Telephone Log

Menu Previous

Selected GFA(s) : HIV Outreach

Selected Grantee(s): All

Selected Sub-population Group: None

All Years (Separated)

GFA Program: HIV/AIDS Outreach Program

FFY: 2002 Quarter: All

6-month Follow-up Rate: 83.5 %

Number of Follow-up Interviews Due: 127

Number of Followup Interviews Received: 106

<u>GPRA Measures</u>	<u>Number of Valid Cases</u>	<u>Percent at Intake</u>	<u>Percent at 6-Month Follow-up</u>	<u>Rate of Change</u>
Increase % of individuals receiving services who:				
Abstinence: did not use alcohol or illegal drugs	106	22.6%	62.3%	175.0%
Crime and Criminal Justice: had no involvement with the criminal justice system	106	94.3%	97.2%	3.0%



- Home Page
- General Info ▶
- Services Info ▶
- Disclaimer
- Privacy Policy
- Data Collection Tools ▶
- Data Entry ▶
- Technical Assistance
- Reports ▼**
- Administrative Services
- Best Practices
- Contact Us
- Data Download ▶
- Search
- Telephone Log

Menu Previous

Number of Followup Interviews Received: 3,640

<u>GPRA Measures</u>	<u>Number of Valid Cases</u>	<u>Percent at Intake</u>	<u>Percent at 6-Month Follow-up</u>	<u>Rate of Change</u>
Increase % of individuals receiving services who:				
Abstinence: did not use alcohol or illegal drugs	3,622	31.7%	54.1%	70.5%
Crime and Criminal Justice: had no involvement with the criminal justice system	3,618	92.6%	95.7%	3.3%
Employment/ Education: were currently employed or attending school	3,625	29.5%	38.7%	31.4%
Health/Behavioral/Social Consequences: experienced no alcohol or illegal drug related health, behavioral, social consequences	3,467	51.1%	57.9%	13.2%
Social Connectedness: were socially connected	0	N/A	N/A	N/A
Stability in Housing: had a permanent place to live in the community	3,610	40.6%	52.2%	28.7%



- Home Page
- General Info ▶
- Services Info ▶
- Disclaimer
- Privacy Policy
- Data Collection Tools ▶
- Data Entry ▶
- Technical Assistance
- Reports ▼**
- Administrative
- Services
- Best Practices
- Contact Us
- Data Download ▶
- Search
- Telephone Log

Menu Previous

FFY: 2004 Quarter: All

6-month Follow-up Rate: 73.9 %

Number of Follow-up Interviews Due: 8,868

Number of Followup Interviews Received: 6,551

<u>GPRA Measures</u>	<u>Number of Valid Cases</u>	<u>Percent at Intake</u>	<u>Percent at 6-Month Follow-up</u>	<u>Rate of Change</u>
Increase % of individuals receiving services who:				
Abstinence: did not use alcohol or illegal drugs	6,527	32.3%	55.4%	71.7%
Crime and Criminal Justice: had no involvement with the criminal justice system	6,511	93.2%	95.1%	2.0%
Employment/ Education: were currently employed or attending school	6,525	29.1%	37.5%	28.8%
Health/Behavioral/Social Consequences: experienced no alcohol or illegal drug related health, behavioral, social consequences	6,491	49.2%	53.3%	8.2%
Social Connectedness: were socially connected	0	N/A	N/A	N/A



- Home Page
- General Info ▶
- Services Info ▶
- Disclaimer
- Privacy Policy
- Data Collection Tools ▶
- Data Entry ▶
- Technical Assistance
- Reports ▼**
- Administrative
- Services
- Best Practices
- Contact Us
- Data Download ▶
- Search
- Telephone Log

Menu Previous

FFY: 2005 Quarter: All

6-month Follow-up Rate: 74.3 %

Number of Follow-up Interviews Due: 9,059

Number of Followup Interviews Received: 6,728

<u>GPRA Measures</u>	<u>Number of Valid Cases</u>	<u>Percent at Intake</u>	<u>Percent at 6-Month Follow-up</u>	<u>Rate of Change</u>
Increase % of individuals receiving services who:				
Abstinence: did not use alcohol or illegal drugs	6,715	32.7%	55.7%	70.3%
Crime and Criminal Justice: had no involvement with the criminal justice system	6,662	93.7%	95.3%	1.7%
Employment/ Education: were currently employed or attending school	6,712	30.0%	38.8%	29.0%
Health/Behavioral/Social Consequences: experienced no alcohol or illegal drug related health, behavioral, social consequences	6,694	49.2%	55.3%	12.6%
Social Connectedness: were socially connected	1,758	65.1%	72.9%	12.0%



- Home Page
- General Info ▶
- Services Info ▶
- Disclaimer
- Privacy Policy
- Data Collection Tools ▶
- Data Entry ▶
- Technical Assistance
- Reports ▼**
- Administrative Services
- Best Practices
- Contact Us
- Data Download ▶
- Search
- Telephone Log

Menu Previous

FFY: 2006 Quarter: All

6-month Follow-up Rate: 73.4 %

Number of Follow-up Interviews Due: 5,685

Number of Followup Interviews Received: 4,174

<u>GPRA Measures</u>	<u>Number of Valid Cases</u>	<u>Percent at Intake</u>	<u>Percent at 6-Month Follow-up</u>	<u>Rate of Change</u>
Increase % of individuals receiving services who:				
<u>Abstinence: did not use alcohol or illegal drugs</u>	4,162	33.7%	59.2%	75.7%
<u>Crime and Criminal Justice: had no involvement with the criminal justice system</u>	4,150	92.7%	95.8%	3.3%
<u>Employment/ Education: were currently employed or attending school</u>	4,168	29.1%	40.6%	39.9%
<u>Health/Behavioral/Social Consequences: experienced no alcohol or illegal drug related health, behavioral, social consequences</u>	4,164	50.4%	56.3%	11.8%
<u>Social Connectedness: were socially connected</u>	4,149	69.7%	72.8%	4.4%



- Home Page
- General Info ▶
- Services Info ▶
- Disclaimer
- Privacy Policy
- Data Collection Tools ▶
- Data Entry ▶
- Technical Assistance
- Reports ▼**
- Administrative Services
- Best Practices
- Contact Us
- Data Download ▶
- Search
- Telephone Log

Menu Previous

Navigation icons: Home, Print, Previous, 1 / 2, Next, Refresh, Search, Users, 100% zoom

Grantee Cost Report

Rate of Adjusted Budget: 80%
Selected GFA Program: Strengthening Communities - Youth
Selected Modality: All
Selected Sub-Population: All
Selected State or Indian Tribe: All

GFA Program: Strengthening Communities - Youth

Grantee Information	Cost Per Adjusted Target	Cost Per Adjusted Reported Intakes
American Indian Prevention Coalition, SCY Phoenix, AZ TI13309 Performance Period: 09/30/02 - 12/30/06**	\$6,582	\$7,362
Chestnut Health Systems, SCY Bloomington, IL TI13356 Performance Period: 09/30/02 - 09/30/07**	\$8,882	\$5,961
CODAC, SCY Tucson, AZ AZ



- Home Page
- General Info ▶
- Services Info ▶
- Disclaimer
- Privacy Policy
- Data Collection Tools ▶
- Data Entry ▶
- Technical Assistance
- Reports ▼**
- Administrative Services
- Best Practices
- Contact Us
- Data Download ▶
- Search
- Telephone Log

Menu Previous

1 / 1
100%

Summary Cost Report

Rate of Adjusted Budget: 80%
Selected GFA Program: Strengthening Communities - Youth
Selected Modality: All
Selected Sub-Population: All
Selected State: All

GFA Title	Average Cost Per Adjusted Target	Average Cost Per Adjusted Reported Intakes
Strengthening Communities - Youth	\$8,237	\$7,122
Total Average	\$8,237	\$7,122



- Home Page
- General Info ▶
- Services Info ▶
- Disclaimer
- Privacy Policy
- Data Collection Tools ▶
- Data Entry ▶
- Technical Assistance
- Reports ▼**
- Administrative Services
- Best Practices
- Contact Us
- Data Download ▶
- Search
- Telephone Log

Menu Previous

1 / 2
100% ▼

Frequency Report

Selected GFAs: TCE

Grant No: All

FFY: All Quarter: All

Selected Interview Type: Intake (All Matched and Unmatched)

Selected Sub-population Group: None

Question: B - 1. During the past 30 days how many days have you used the following:

b1. Alcohol to intoxication (5+ drinks in one sitting).

# of days	Frequency	Rate	Valid Rate
0	3,107	45.5 %	68.0 %
1	362	5.3 %	7.9 %
2	211	3.1 %	4.6 %
3	124	1.8 %	2.7 %
4	110	1.6 %	2.4 %
5	83	1.2 %	1.8 %
6	53	0.8 %	1.2 %



- Home Page
- General Info ▶
- Services Info ▶
- Disclaimer
- Privacy Policy
- Data Collection Tools ▶
- Data Entry ▶
- Technical Assistance
- Reports ▼**
- Administrative Services
- Best Practices
- Contact Us
- Data Download ▶
- Search
- Telephone Log

Menu Previous

Question: B - 1. During the past 30 days how many days have you used the following:

b1. Alcohol to intoxication (5+ drinks in one sitting).

# of days	Frequency	Rate	Valid Rate
MISSING DATA	20	0.3 %	--
Not Applicable	2,222	32.5 %	--
Total	6,832	100% ^A	100% ^A

Question: C - 1. In the past 30 days, where have you been living most of the time?

Living	Frequency	Rate	Valid Rate
Shelter	278	4.1 %	4.1 %
Street/Outdoors	90	1.3 %	1.3 %
Institution	565	8.3 %	8.3 %
Housed	5,879	86.1 %	86.3 %
REFUSED	2	0.0 %	--
DONT KNOW	1	0.0 %	--
MISSING DATA	17	0.2 %	--
Total	6,832	100% ^A	100% ^A



- Home Page
- General Info ▶
- Services Info ▶
- Disclaimer
- Privacy Policy
- Data Collection Tools ▶
- Data Entry ▶
- Technical Assistance
- Reports ▼**
- Administrative Services
- Best Practices
- Contact Us
- Data Download ▶
- Search
- Telephone Log

Menu Previous

1 / 4
100% ▼

Crosstabulations of Client Measures Report

Selected GFAs: TCE
 Grant No: All
 FFY: All Quarter: All
 Selected Interview Type: Intake
 Selected Crosstab Measure: Age Group
 Selected Sub-population Group: None

Question: B - 1. During the past 30 days how many days have you used the following:

b1. Alcohol to intoxication (5+ drinks in one sitting).

# of days	10-12	13-17	18-24	25-34	35-44	45-54	55-64
0	108 56.0%	691 43.2%	459 40.5%	786 49.4%	650 47.6%	299 42.7%	4
1	4 2.1%	90 5.6%	82 7.2%	89 5.6%	62 4.5%	28 4.0%	
2	4	54	49	37	38	21	



- Home Page
- General Info ▶
- Services Info ▶
- Disclaimer
- Privacy Policy
- Data Collection Tools ▶
- Data Entry ▶
- Technical Assistance
- Reports ▼**
- Administrative Services
- Best Practices
- Contact Us
- Data Download ▶
- Search
- Telephone Log

Menu Previous

Crosstabulations of Client Measures Report

Selected GFAs: TCE

Grant No: All

FFY: All Quarter: All

Selected Interview Type: Intake

Selected Crosstab Measure: Age Group

Selected Sub-population Group: None

Question: C - 1. In the past 30 days, where have you been living most of the time?

If you have been living in house, where have you been living in most of the time?

Housed	10-12	13-17	18-24	25-34	35-44	45-54	55+
Own/rent apartment,	85 44.0%	718 44.9%	394 34.8%	634 39.8%	645 47.2%	367 52.4%	6
Someone else's	70 36.3%	547 34.2%	482 42.6%	543 34.1%	346 25.3%	129 18.4%	1
Halfway house	1 0.5%	1 0.1%	5 0.4%	7 0.4%	8 0.6%	10 1.4%	



- Home Page
- General Info ▶
- Services Info ▶
- Disclaimer
- Privacy Policy
- Data Collection Tools ▶
- Data Entry ▶
- Technical Assistance
- Reports ▼**
- Administrative Services
- Best Practices
- Contact Us
- Data Download ▶
- Search
- Telephone Log

Menu Previous

1 / 1
100%

Missing Data Frequency Report

Selected GFAs: TCE
 Grant No: All
 FFY: All Quarter: All

Selected Interview Type: Intake
 Selected Sub-population Group: None

Question: B - 1. During the past 30 days how many days have you used the following:

b1. Alcohol to intoxication (5+ drinks in one sitting).

# of days	Frequency	Rate
REFUSED	5	0.1%
DONT KNOW	15	0.2%
MISSING DATA	20	0.3%
Not Applicable	2,222	32.5%
Total	2,262	33.1%

Question: C - 1. In the past 30 days, where have you been living most of the time?



- Home Page
- General Info ▶
- Services Info ▶
- Disclaimer
- Privacy Policy
- Data Collection Tools ▶
- Data Entry ▶
- Technical Assistance
- Reports ▼**
- Administrative Services
- Best Practices
- Contact Us
- Data Download ▶
- Search
- Telephone Log

Menu

Previous

Question: C - 1. In the past 30 days, where have you been living most of the time?

Living	Frequency	Rate
REFUSED	2	0.0%
DONT KNOW	1	0.0%
MISSING DATA	17	0.2%
Total	20	0.3%

Question: C - 1. In the past 30 days, where have you been living most of the time?

If you have been living in house, where have you been living in most of the time?

Housed	Frequency	Rate
DONT KNOW	1	0.0%
MISSING DATA	44	0.6%
Not Applicable	953	13.9%
Total	998	14.6%

* Please note that due to rounding and single precision the sum or percentages for each question may not total to



- Home Page
- General Info ▶
- Services Info ▶
- Disclaimer
- Privacy Policy
- Data Collection Tools ▶
- Data Entry ▶
- Technical Assistance
- Reports ▼**
- Administrative Services
- Best Practices
- Contact Us
- Data Download ▶
- Search
- Telephone Log

Sort... Menu Previous

1 / 1
100%

Follow-up Notification Report

Grant No: T116246

Selected Grantee: Alameda County Behavioral Health Services

Selected Follow-up Type: 6 Month Follow-up

of records listed: 11

Client ID	Intake Interview Date	Earliest Date of Eligibility for Follow-ups	Latest Date of Eligibility for Follow-ups
2763	06/15/06	11/15/06	02/15/07
2764	06/15/06	11/15/06	02/15/07
4428	06/20/06	11/20/06	02/20/07
5483	05/18/06	10/18/06	01/18/07
5701	03/23/06	08/23/06	11/23/06
5740	04/06/06	09/06/06	12/06/06
5752	04/06/06	09/06/06	12/06/06



- Home Page
- General Info ▶
- Services Info ▶
- Disclaimer
- Privacy Policy
- Data Collection Tools ▶
- Data Entry ▶
- Technical Assistance
- Reports ▼**
- Administrative Services
- Best Practices
- Contact Us
- Data Download ▶
- Search
- Telephone Log

Menu Previous

Grantee Delinquency

GFA Programs Selected: TCE

FFY All Years (Separated)

GFA Program: Targeted Capacity Expansion

FFY: 2003

Grantee Information	No Program Targets Entered in System	No Intake Data in System	Entered Data less than 10% of Program Targets
City of Huntington TCE Huntington, WV TI14894 Performance Period: 06/01/03 - 06/30/07**		X	X

FFY: 2004

Grantee Information	No Program Targets Entered in System	No Intake Data in System	Entered Data less than 10% of Program Targets
Allegheny County Pittsburgh, PA TI15387 Performance Period: 09/30/03 - 11/30/06**		X	X



- Home Page
- General Info ▶
- Services Info ▶
- Disclaimer
- Privacy Policy
- Data Collection Tools ▶
- Data Entry ▶
- Technical Assistance
- Reports ▼**
- Administrative Services
- Best Practices
- Contact Us
- Data Download ▶
- Search
- Telephone Log

Menu Previous

Combined Intake Coverage and Follow-up Rate

Selected GFA Program(s): TCE

All Years (Separated)

GFA Programs: Targeted Capacity Expansion

FFY: 2003 Quarter: All

Grantee Information	Intake Coverage Rate	3 Months Follow-up Rate	6 Months Follow-up Rate	12 Months Follow-up Rate
City of Gallup TCE Gallup, NM TI13807 Performance Period: 06/01/03 - 11/27/06**	85.0%	N/A	N/A	N/A
City of Huntington TCE Huntington, WV TI14894 Performance Period: 06/01/03 - 06/30/07**	0%	N/A	N/A	N/A
Spokane County Board of Commissioners, TCE Spokane, WA TI13612 Performance Period: 09/30/02 - 11/24/06**	85.5%	0%	96.2%	86.8%
Total 3 Grantee(s)	44.2%	0%	96.2%	86.8%



- Home Page
- General Info ▶
- Services Info ▶
- Disclaimer
- Privacy Policy
- Data Collection Tools ▶
- Data Entry ▶
- Technical Assistance
- Reports ▼**
- Administrative Services
- Best Practices
- Contact Us
- Data Download ▶
- Search
- Telephone Log

Sort... Menu Previous

Poor Performance Report

Benchmark Rate: 80%

Selected GFA: Targeted Capacity Expansion

Year: 2nd Year

Grantee Information	Client Target (To-Date)	Intakes Received (To-Date)	Intake Rate (To-Date)	6 Months Follow-up Due	6 Months Follow-up Received	6 Months Follow-up Rate ^
City of Jackson Jackson, TN TI17407 07/01/05 - 07/30/07**	40	32	80.0%	17	12	70.6%
City of Phoenix Phoenix, AZ TI17309 09/30/05 - 09/29/08	108	85	78.7%	0	0	N/A
County of Webb Commissioner's Ct Laredo, TX TI17235 08/15/05 - 08/14/08	93	97	104.3%	49	38	77.6%
Department of County Human Services Portland, OR						



- Home Page
- General Info ▶
- Services Info ▶
- Disclaimer
- Privacy Policy
- Data Collection Tools ▶
- Data Entry ▶
- Technical Assistance
- Reports ▼**
- Administrative Services
- Best Practices
- Contact Us
- Data Download ▶
- Search
- Telephone Log

Menu Previous

1 / 1
100%

Drug Use Report

Selected GFAs: TCE
Grant No: All
FFY: All Quarter: All
Interview Type: Intake

Drug	Frequency	% Used
Any Alcohol	2,569	Text Object %
Marijuana/Hashish	1,740	25.5%
Methamphetamine or other amphetamines (Meth, Uppers, Speed, Ice, Chalk, Crystal, Glass, Fire, Crank)	954	14.0%
Cocaine/Crack	686	10.0%
Benzodiazepines: Diazepam (Valium); Alprazolam (Xanax); Triazolam (Halcion); and Estazolam (Prosom and Rohypnol-also known as Roofies, Roche, and Cope)	384	5.6%
Other Illegal Drugs	313	4.6%



- Home Page
- General Info ▶
- Services Info ▶
- Disclaimer
- Privacy Policy
- Data Collection Tools ▶
- Data Entry ▶
- Technical Assistance
- Reports ▼**
- Administrative Services
- Best Practices
- Contact Us
- Data Download ▶
- Search
- Telephone Log

Menu Previous

Other Illegal Drugs	313	4.6%
Heroin (Smack, H, Junk, Skag)	186	2.7%
Percocet	119	1.7%
Codeine	109	1.6%
Tylenol 2,3,4	101	1.5%
Other tranquilizers, downers, sedatives or hypnotics	86	1.3%
Hallucinogens/psychedelics, PCP (Angel Dust, Ozone, Wack, RocketFuel), MDMA (Ecstasy, XTC, X, Adam), LSD (Acid, Boomers, Yellow Sunshine), Mushrooms or Mescaline.	82	1.2%
Oxycontin/Oxycodone	79	1.2%
Inhalants (poppers, snappers, rush, whippets)	70	1.0%
Non-prescription methadone	65	1.0%
Morphine	48	0.7%
Non-prescription GHB (known as Grievous Bodily Harm; Liquid Ecstasy; and Georgia Home Boy)	33	0.5%
Darvon	29	0.4%
Demerol	24	0.4%
Barbiturates: Mephobarbital (Mebacut); and pentobarbital sodium (Nembutal)	20	0.3%





- Home Page
- General Info ▶
- Services Info ▶
- Disclaimer
- Privacy Policy
- Data Collection Tools ▶
- Data Entry ▶
- Technical Assistance
- Reports ▼**
- Administrative
- Services
- Best Practices
- Contact Us
- Data Download ▶
- Search
- Telephone Log

Menu Previous

sunshine), mushrooms or mescaline.		
Oxycontin/Oxycodone	79	1.2%
Inhalants (poppers, snappers, rush, whippets)	70	1.0%
Non-prescription methadone	65	1.0%
Morphine	48	0.7%
Non-prescription GHB (known as Grievous Bodily Harm; Liquid Ecstasy; and Georgia Home Boy)	33	0.5%
Darvon	29	0.4%
Demerol	24	0.4%
Barbiturates: Mephobarbital (Mebacut); and pentobarbital sodium (Nembutal) @DrugUse (String)	20	0.3%
Diluadid	15	0.2%
Ketamine (known as Special K or Vitamin K)	7	0.1%





- Home Page
- General Info ▶
- Services Info ▶
- Disclaimer
- Privacy Policy
- Data Collection Tools ▶
- Data Entry ▶
- Technical Assistance
- Reports ▼**
- Administrative Services
- Best Practices
- Contact Us
- Data Download ▶
- Search
- Telephone Log

Menu Previous

1 / 11
100% ▼

Treatment Non-Completers Report

Selected GFAs: TCE
 Grant No: All
 FFY: All Quarter: All

Question: A - 1. What is your gender?

Gender	Frequency	Rate	Valid Rate
Male	991	62.7 %	62.8 %
Female	586	37.1 %	37.1 %
Transgender	1	0.1 %	0.1 %
Other	1	0.1 %	0.1 %
MISSING DATA	1	0.1 %	--
Total	1,580	100% ^A	100% ^A

Question: A - 2. Are you Hispanic or Latino?



- Home Page
- General Info ▶
- Services Info ▶
- Disclaimer
- Privacy Policy
- Data Collection Tools ▶
- Data Entry ▶
- Technical Assistance
- Reports ▼
- Administrative Services
- Best Practices
- Contact Us
- Data Download ▶
- Search
- Telephone Log

Menu Previous

1 / 10
100%

Length of Stay

Selected GFAs: TCE

Grant No: All

FFY: All Quarter: All

Selected Length of Stay: < 15 days

Question: A - 1. What is your gender?

Gender	Frequency	Rate	Valid Rate
Male	265	65.6 %	65.6 %
Female	139	34.4 %	34.4 %
Total	404	100% *	100% *

Question: A - 2. Are you Hispanic or Latino?

Hispanic or Latino	Frequency	Rate	Valid Rate
Yes	84	20.8 %	20.8 %



- Home Page
- General Info ▶
- Services Info ▶
- Disclaimer
- Privacy Policy
- Data Collection Tools ▶
- Data Entry ▶
- Technical Assistance
- Reports ▼**
- Administrative Services
- Best Practices
- Contact Us
- Data Download ▶
- Search
- Telephone Log

Menu Previous

Hispanic or Latino	Frequency	Rate	Valid Rate
Yes	84	20.8 %	20.8 %
No	320	79.2 %	79.2 %
Total	404	100% ^A	100% ^A

Question: A - 2a. What ethnic group do you consider yourself?

Ethnicity	Frequency	Rate	Valid Rate
Central American	3	0.7 %	3.6 %
Cuban	2	0.5 %	2.4 %
Dominican	1	0.2 %	1.2 %
Mexican	28	6.9 %	33.7 %
Puerto Rican	46	11.4 %	55.4 %
Other	1	0.2 %	1.2 %
Multi-Ethnic	2	0.5 %	2.4 %
MISSING DATA	1	0.2 %	--
Not Applicable	320	79.2 %	--
Total	404	100% ^A	100% ^A



- Home Page
- General Info ▶
- Services Info ▶
- Disclaimer
- Privacy Policy
- Data Collection Tools ▶
- Data Entry ▶
- Technical Assistance
- Reports ▼**
- Administrative Services
- Best Practices
- Contact Us
- Data Download ▶
- Search
- Telephone Log

Menu Previous

Selected GFAs: TCE

Grant No: All

FFY: All Quarter: All

Selected Length of Stay: < 15 days

Question: K - Services Received

Case Management Services	Frequency	Rate	Valid Rate
Supportive Transitional Drug-Free Housing Services	5	0.2 %	0.2 %
Other Case Management Services	10	0.5 %	0.5 %
Medical Services			
Medical Care	5	0.2 %	0.2 %
Alcohol/Drug Testing	30	1.5 %	1.5 %
Other Medical Services	7	0.3 %	0.3 %
After Care Services			
Continuing Care	4	0.2 %	0.2 %
Relapse Prevention	34	1.7 %	1.7 %
...



- Home Page
- General Info ▶
- Services Info ▶
- Disclaimer
- Privacy Policy
- Data Collection Tools ▶
- Data Entry ▶
- Technical Assistance
- Reports ▼**
- Administrative Services
- Best Practices
- Contact Us
- Data Download ▶
- Search
- Telephone Log

Menu Previous

Risky Behavior Outcome Report

Selected GFA(s) : TCE

Selected Grantee(s): All

All Years (Separated)

GFA Program: Targeted Capacity Expansion

FFY: 2003 Quarter: All

6-month Follow-up Rate: 96.2 %

Number of Follow-up Interviews Due: 53

Number of Followup Interviews Received: 51

<u>GPRA Measures</u>	<u>Number of Valid Cases</u>	<u>Percent at Intake</u>	<u>Percent at 6-Month Follow-up</u>	<u>Rate of Change</u>
Increase % of individuals receiving services who:				
Injection drug use: injected illegal drugs	51	5.9%	0.0%	-100.0%
Had unprotected sexual contact	16	75.0%	62.5%	-16.7%
Had unprotected sexual contact with an individual who is or was HIV positive or has AIDS	8	0.0%	0.0%	N/A



- Home Page
- General Info ▶
- Services Info ▶
- Disclaimer
- Privacy Policy
- Data Collection Tools ▶
- Data Entry ▶
- Technical Assistance
- Reports ▼**
- Administrative Services
- Best Practices
- Contact Us
- Data Download ▶
- Search
- Telephone Log

Menu Previous

GPRA Program: Targeted Capacity Expansion

FFY: 2003 Quarter: All

[6-month Follow-up Rate:](#) 96.2 %

[Number of Follow-up Interviews Due:](#) 53

[Number of Followup Interviews Received:](#) 51

GPRA Measures	Number of Valid Cases	Percent at Intake	Percent at 6-Month Follow-up	Rate of Change
Increase % of individuals receiving services who:				
Injection drug use: injected illegal drugs	51	5.9%	0.0%	-100.0%
Had unprotected sexual contact	16	75.0%	62.5%	-16.7%
Had unprotected sexual contact with an individual who is or was HIV positive or has AIDS	8	0.0%	0.0%	N/A
Had unprotected sexual contact with injected drug user	8	0.0%	0.0%	N/A
Had unprotected sexual contact with an individual high on some substance	8	12.5%	0.0%	-100.0%

FFY: 2004 Quarter: All

[6-month Follow-up Rate:](#) 72.9 %



- Home Page
- General Info ▶
- Services Info ▶
- Disclaimer
- Privacy Policy
- Data Collection Tools ▶
- Data Entry ▶
- Technical Assistance
- Reports ▼**
- Administrative Services
- Best Practices
- Contact Us
- Data Download ▶
- Search
- Telephone Log

Menu Previous

FFY: 2005 Quarter: All

FFY: 2005 Quarter: All

6-month Follow-up Rate: 78.7 %

Number of Follow-up Interviews Due: 2,098

Number of Followup Interviews Received: 1,651

<u>GPRA Measures</u>	<u>Number of Valid Cases</u>	<u>Percent at Intake</u>	<u>Percent at 6-Month Follow-up</u>	<u>Rate of Change</u>
Increase % of individuals receiving services who:				
Injection drug use: injected illegal drugs	1,637	4.5%	2.1%	-54.1%
Had unprotected sexual contact	332	78.3%	74.7%	-4.6%
Had unprotected sexual contact with an individual who is or was HIV positive or has AIDS	214	5.1%	7.0%	36.4%
Had unprotected sexual contact with injected drug user	214	7.9%	5.6%	-29.4%
Had unprotected sexual contact with an individual high on some substance	214	20.1%	15.9%	-20.9%

FFY: 2006 Quarter: All

6-month Follow-up Rate: 73.9 %



- Home Page
- General Info ▶
- Services Info ▶
- Disclaimer
- Privacy Policy
- Data Collection Tools ▶
- Data Entry ▶
- Technical Assistance
- Reports ▼**
- Administrative Services
- Best Practices
- Contact Us
- Data Download ▶
- Search
- Telephone Log

Menu Previous

FFY: 2006 Quarter: All

6-month Follow-up Rate: 73.9 %

Number of Follow-up Interviews Due: 2,438

Number of Followup Interviews Received: 1,802

GPRA Measures	Number of Valid Cases	Percent at Intake	Percent at 6-Month Follow-up	Rate of Change
Increase % of individuals receiving services who:				
Injection drug use: injected illegal drugs	1,798	4.6%	3.2%	-30.5%
Had unprotected sexual contact	390	77.2%	73.1%	-5.3%
Had unprotected sexual contact with an individual who is or was HIV positive or has AIDS	248	6.5%	6.5%	0.0%
Had unprotected sexual contact with injected drug user	248	7.7%	5.2%	-31.6%
Had unprotected sexual contact with an individual high on some substance	248	25.4%	15.3%	-39.7%

FFY: 2007 Quarter: All

Not enough data available (10 or more interviews) to calculate percentage change.



- Home Page
- General Info ▶
- Services Info ▶
- Disclaimer
- Privacy Policy
- Data Collection Tools ▶
- Data Entry ▶
- Technical Assistance
- Reports ▼**
- Administrative Services
- Best Practices
- Contact Us
- Data Download ▶
- Search
- Telephone Log

Menu Previous

Demographics Report

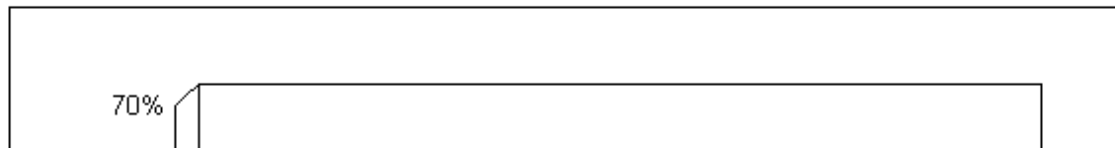
Selected GFAs: TCE

Grant No: All

FFY: All Quarter: All

Question: A - 1. What is your gender?

Gender	Frequency	Rate	Valid Rate
Male	4,142	60.6 %	60.7 %
Female	2,677	39.2 %	39.2 %
Transgender	8	0.1 %	0.1 %
Other	1	0.0 %	0.0 %
DON'T KNOW	1	0.0 %	--
MISSING DATA	3	0.0 %	--
Total	6,832	100% ^A	100% ^A

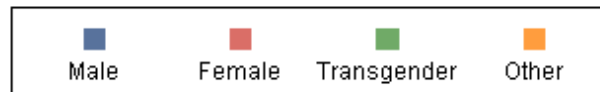
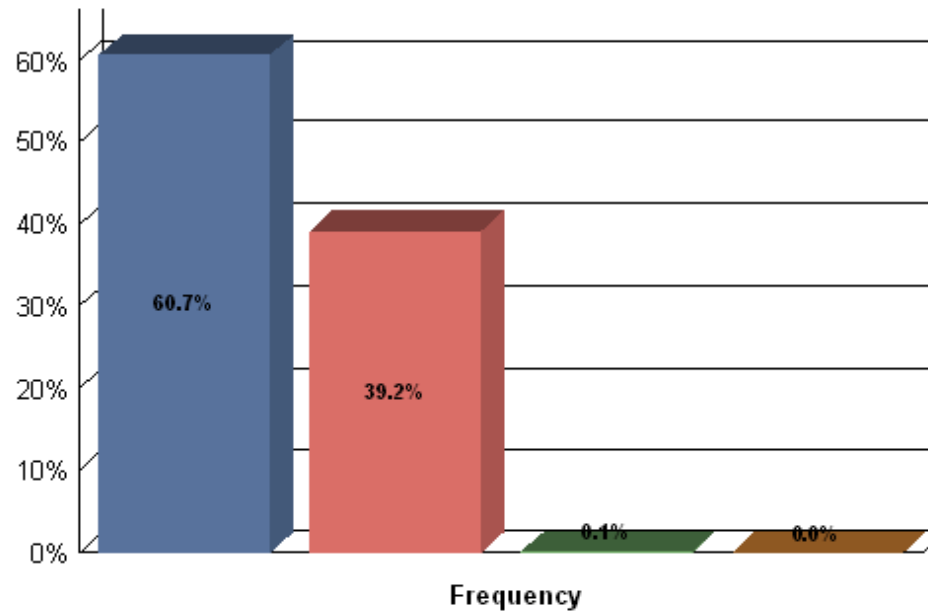




- Home Page
- General Info ▶
- Services Info ▶
- Disclaimer
- Privacy Policy
- Data Collection Tools ▶
- Data Entry ▶
- Technical Assistance
- Reports ▼
- Administrative Services
- Best Practices
- Contact Us
- Data Download ▶
- Search
- Telephone Log

Menu

Previous





- Home Page
- General Info ▶
- Services Info ▶
- Disclaimer
- Privacy Policy
- Data Collection Tools ▶
- Data Entry ▶
- Technical Assistance
- Reports ▼**
- Administrative Services
- Best Practices
- Contact Us
- Data Download ▶
- Search
- Telephone Log

Menu Previous

Intake to Discharge Change Report

Selected GFA(s) : TCE

Selected Grantee(s): All

Selected Sub-population Group: None

All Years (Separated)

GFA Program: Targeted Capacity Expansion

FFY: 2004 Quarter: All

Number of Discharge Interviews Received: 16

<u>GPRA Measures</u>	<u>Number of Valid Cases</u>	<u>Percent at Intake</u>	<u>Percent at Discharge</u>	<u>Rate of Change</u>
Abstinence: did not use alcohol or illegal drugs	16	43.8%	75.0%	71.4%
Crime and Criminal Justice: had no involvement with the criminal justice system	15	80.0%	100.0%	25.0%
Employment/ Education: were currently employed or attending school	16	43.8%	43.8%	0.0%
Health/Behavioral/Social Consequences: ...	16	62.5%	81.3%	30.0%



- Home Page
- General Info ▶
- Services Info ▶
- Disclaimer
- Privacy Policy
- Data Collection Tools ▶
- Data Entry ▶
- Technical Assistance
- Reports ▼**
- Administrative Services
- Best Practices
- Contact Us
- Data Download ▶
- Search
- Telephone Log

Menu Previous

All Years (Separated)

GFA Program: Targeted Capacity Expansion

FFY: 2004 Quarter: All

Number of Discharge Interviews Received: 16

<u>GPRA Measures</u>	<u>Number of Valid Cases</u>	<u>Percent at Intake</u>	<u>Percent at Discharge</u>	<u>Rate of Change</u>
Abstinence: did not use alcohol or illegal drugs	16	43.8%	75.0%	71.4%
Crime and Criminal Justice: had no involvement with the criminal justice system	15	80.0%	100.0%	25.0%
Employment/ Education: were currently employed or attending school	16	43.8%	43.8%	0.0%
Health/Behavioral/Social Consequences: experienced no alcohol or illegal drug related health, behavioral, social consequence	16	62.5%	81.3%	30.0%
Social Connectedness: were socially connected	0	N/A	N/A	N/A
Stability in Housing: had a permanent place to live in the community	16	56.3%	37.5%	-33.3%



- Home Page
- General Info ▶
- Services Info ▶
- Disclaimer
- Privacy Policy
- Data Collection Tools ▶
- Data Entry ▶
- Technical Assistance
- Reports ▼**
- Administrative Services
- Best Practices
- Contact Us
- Data Download ▶
- Search
- Telephone Log

Menu Previous

FFY: 2005 Quarter: All

Number of Discharge Interviews Received: 735

GPRA Measures	Number of Valid Cases	Percent at Intake	Percent at Discharge	Rate of Change
Abstinence: did not use alcohol or illegal drugs	733	46.5%	69.3%	49.0%
Crime and Criminal Justice: had no involvement with the criminal justice system	727	90.6%	94.6%	4.4%
Employment/ Education: were currently employed or attending school	733	59.1%	67.7%	14.5%
Health/Behavioral/Social Consequences: experienced no alcohol or illegal drug related health, behavioral, social consequences	734	63.8%	74.7%	17.1%
Social Connectedness: were socially connected	319	69.6%	80.9%	16.2%
Stability in Housing: had a permanent place to live in the community	733	66.8%	65.3%	-2.2%



- Home Page
- General Info ▶
- Services Info ▶
- Disclaimer
- Privacy Policy
- Data Collection Tools ▶
- Data Entry ▶
- Technical Assistance
- Reports ▼**
- Administrative Services
- Best Practices
- Contact Us
- Data Download ▶
- Search
- Telephone Log

Menu Previous

All Years (Separated)

GFA Program: Targeted Capacity Expansion

FFY: 2006 Quarter: All

Number of Discharge Interviews Received: 1,203

<u>GPRA Measures</u>	<u>Number of Valid Cases</u>	<u>Percent at Intake</u>	<u>Percent at Discharge</u>	<u>Rate of Change</u>
Abstinence: did not use alcohol or illegal drugs	1,196	43.6%	60.4%	38.6%
Crime and Criminal Justice: had no involvement with the criminal justice system	1,194	90.8%	94.5%	4.1%
Employment/ Education: were currently employed or attending school	1,201	57.4%	62.4%	8.7%
Health/Behavioral/Social Consequences: experienced no alcohol or illegal drug related health, behavioral, social consequences	1,199	67.5%	72.5%	7.4%
Social Connectedness: were socially connected	1,199	74.7%	83.6%	11.8%
Stability in Housing: had a permanent place to live in the community	1,194	59.7%	57.8%	-3.2%



- Home Page
- General Info ▶
- Services Info ▶
- Disclaimer
- Privacy Policy
- Data Collection Tools ▶
- Data Entry ▶
- Technical Assistance
- Reports ▼**
- Administrative Services
- Best Practices
- Contact Us
- Data Download ▶
- Search
- Telephone Log

Menu Previous

Stability in Housing: had a permanent place to live in the community	1,194	59.7%	57.8%	-3.2%
--	-------	-------	-------	-------

FFY: 2007 Quarter: All

Number of Discharge Interviews Received: 11

<u>GPRA Measures</u>	<u>Number of Valid Cases</u>	<u>Percent at Intake</u>	<u>Percent at Discharge</u>	<u>Rate of Change</u>
Abstinence: did not use alcohol or illegal drugs	11	0.0%	9.1%	N/A
Crime and Criminal Justice: had no involvement with the criminal justice system	11	100.0%	100.0%	0.0%
Employment/ Education: were currently employed or attending school	11	36.4%	27.3%	-25.0%
Health/Behavioral/Social Consequences: experienced no alcohol or illegal drug related health, behavioral, social consequences	11	18.2%	18.2%	0.0%
Social Connectedness: were socially connected	11	81.8%	81.8%	0.0%
Stability in Housing: had a permanent place to live in the community	11	27.3%	27.3%	0.0%