

2010 Census Tribal Statistical Areas Program (TSAP)
Verification Procedures for TSAP Participants



February 2010

Table of Contents

1.0	Verification Introduction.....	4
	1.1 Background.....	4
	1.2 Key Schedule Dates.....	5
	1.3 Criteria and Guidelines for Tribal Statistical Areas.....	5
2.0	Verification Procedures.....	6
	2.1 Verification Overview.....	6
	2.2 Paper Map Based Verification.....	6
	2.3 Digital Verification.....	7
3.0	Submitting Verification Corrections to the U.S. Census Bureau.....	14
	3.1 Uploading/Sending Electronic Files.....	14
	3.2 Mailing Paper and/or Electronic Files.....	17
Appendices		
	1. Regional Census Centers Contact List.....	18
	2. Disclosure to Respondents.....	19

Acronyms for Tribal Statistical Areas Program

ACS	American Community Survey
AIA	American Indian area
AIAN	American Indian and Alaska Native
AIR	American Indian Reservation
ANA	Alaska Native area
ANRC	Alaska Native Regional Corporation
ANVSA	Alaska Native village statistical area
BAS	Boundary and Annexation Survey
BDP	Block Definition Project
CD	Compact disk-read only memory
CDP	Census designated place
ESRI	Environmental Systems Research Institute
FTP	File Transfer Protocol
GIS	Geographic information system
HU	Housing units
ORTL	Off-reservation trust lands
OTSA	Oklahoma Tribal Statistical Area
PC	Personal computer
RCC	Regional census center (U.S. Census Bureau, Field Division)
SDTSA	State Designated Tribal Statistical Area
TDSA	Tribal Designated Statistical Area
TSAP	Tribal Statistical Areas Program

1.0 Verification Introduction

1.1 Background

Delineation materials for tribal statistical areas were sent by the U.S. Census Bureau to Tribal Statistical Area Program (TSAP) participants in January 2009. During the winter and spring of 2009, participants delineated their eligible statistical areas and submitted digital and/or paper map delineation materials to the U.S. Census Bureau. Upon return receipt, submissions were processed by the Bureau's Regional Census Center (RCC) Geography staff.

Delineations submitted to the Census Bureau were reviewed according to geographic and demographic criteria set forth in the TSAP Participant Guidelines that were included in the January 2009 delivery. Additionally, paper map submissions were digitized by RCC staff. Following this review by RCC staff, files were sent to the Census Bureau's headquarters office located in Suitland, MD for insertion into Census Bureau databases. Headquarters staff completed a final review of the submission and added area boundary changes and line features into the database. Boundary files for new statistical areas were also added to the database at this time. In some cases, the Census Bureau made changes to participant submissions so that the statistical area delineated would meet criteria and guidelines, even if the participant requested the Census Bureau make no changes to the area as it previously existed.

The verification phase of the TSAP program for the 2010 Census is the opportunity for TSAP participants to review their statistical area boundaries as they now exist in the Census Bureau's databases following any updates that have occurred during the initial submission phase. During the verification phase participants may verify or request changes to their statistical areas and line features using the materials enclosed with this document. Verification materials are being provided to a) all participants who submitted a new or updated delineation for their statistical area, b) participants who requested no changes be made to their previously existing area, but to which the Census Bureau made changes to ensure the area meets criteria and guidelines, and c) participants who either did not respond or indicated they did not want to participate in the TSAP initially, but later requested to receive verification materials.

If you returned your original submission using paper maps, you will find paper map verification materials enclosed. If you returned digital files using the TSAP ArcGIS extension, you will find a CD/DVD enclosed. The CD/DVD contains PDF maps and shapefiles depicting your statistical area.

If the statistical area boundaries and line features present in the enclosed paper maps or digital verification files appear **correctly**, please return the enclosed postcard communicating *No Changes be made or notify the appropriate RCC by phone or email* (RCC contact information is included in Appendix 1). In cases where statistical area boundaries and/or line features are **incorrect or misrepresented**, participants should use the enclosed materials to make any needed corrections and return the paper or digital materials to the appropriate RCC. Verification procedures are presented in Section 2.0 of this document (including Geographic Information System [GIS] methods with the TSAP Extension).

These guidelines include instructions for verifying and reviewing your tribal statistical areas as they currently exist in Census Bureau databases. Paper map based verification procedures are presented in

Section 2.2 while digital verification procedures are covered in Section 2.3. Section 3.0 describes the methods for returning your verification materials to the Census Bureau if you are requesting corrections be made to the delineations of your areas. The Appendices include Census Bureau RCC contact information and a Disclosure to Respondents of Census Bureau programs. A document called *Verification Procedures for TSAP Participants: Supplemental Documentation* is also included for use as additional background and in the event significant corrections to your statistical entities are necessary. It offers guidance and reference for the delineation of tribal statistical areas with paper maps or digitally with the TSAP Extension. It also offers a review of the criteria and guidelines that final statistical areas must comply with.

1.2 Key Schedule Dates

February 2010 – Verification materials are mailed from the U.S. Census Bureau to TSAP participants. **TSAP participants will have 30 days from the date of receipt to review materials, make any necessary corrections, and return materials to their RCC.**

February-March 2010 – Verification responses are sent via mail or electronically to the U.S. Census Bureau by TSAP Participants.

March-May 2010 – The U.S. Census Bureau makes any changes to the database or resolves delineation errors with the aid of TSAP participants.

1.3 Criteria and Guidelines for Delineating Tribal Statistical Areas

Though the verification phase of the TSAP program may not require as heavy an investment in time and effort as the initial submission phase, the application of criteria and guidelines to tribal statistical areas remains of utmost importance. If during the verification phase you need to make corrections to your statistical areas or line features by paper map or digitally with the TSAP extension (GIS based shape file methods), it is highly recommended you refer to the supplemental documentation, *Review of Delineation Criteria, Guidelines and Procedures* for guidance.

All statistical American Indian Areas (AIAs) must follow a standard set of criteria that supports a shared purpose of providing a meaningful and relevant geographic framework for tabulating data for the Census. It is the responsibility of the Census Bureau to ensure that geographic entity criteria can achieve the goal of providing meaningful, relevant, and reliable statistical data, and that the final criteria for geographic entities are met. While aware that there are secondary uses of geographic entities and the data tabulated for them, the Census Bureau will not modify their boundaries or attributes specifically to meet these secondary uses, including those of other government agencies. If a change is made to a geographic entity to meet one specific purpose, it may be detrimental for other programs that also use these entities. The Census Bureau will use the criteria and guidelines provided to participants in the initial phase (and included for verification in the Supplemental Documentation) to help ensure that tribal statistical areas delineated for the 2010 Census support the intended purpose of the program, provide useful and meaningful data for the tribe they represent, and enhance the ability for data users to make more meaningful comparisons between data.

2.0 Verification Procedures

2.1 Verification Overview

Verifying your tribal statistical areas and associated line features is a very important component to participating in TSAP. Verification or the request for corrections of statistical areas and/or line features allows the Census Bureau to ensure that your statistical areas are correctly delineated for the upcoming 2010 Census. From the finalized boundaries determined through the verification process, the Census Bureau will tabulate data for the 2010 Census and the subsequently occurring American Community Survey (ACS). Meaningful statistical data from the 2010 Census and the ACS can provide tribes and other data users with tools to help make informed decisions, and plan for services such as education, transportation, health, and housing.

Enclosed with this document are paper map or digital verification materials as well as a *No Changes* postcard. The materials depict the most current version of your tribal statistical areas and line features that the Census Bureau has in its database. Upon reviewing the paper maps or digital files participants may choose from several methods for returning any needed changes to their delineations, regardless of the format originally submitted to the Census Bureau. The format of returned verification materials is flexible and if contacted RCCs will work with participants to help in their returning the most effective and timely conveyance. For example participants may choose to mark corrections on paper maps, scan the paper maps, and then email the scanned images. Or, participants who are provided with PDF maps may digitally mark-up the files and return screenshots electronically to the Census Bureau. GIS savvy participants may use the TSAP Extension to provide corrections if needed. These files would then be inserted into the Census Bureau's databases in the same manner as the initial digital submission. Participants may simply choose to mark and return by postal mail paper map corrections.

NOTE: Procedures for accomplishing verification with paper maps are described in Section 2.2 while digital verification options and methods are described in Section 2.3.

If you consider the delineations correct, the Census Bureau requests that participants only return the enclosed verification *No Changes* postcard verifying that your areas and line features are correctly represented in our database. This communication may also be made by email or telephone. (RCC contact information is found in Appendix 1.)

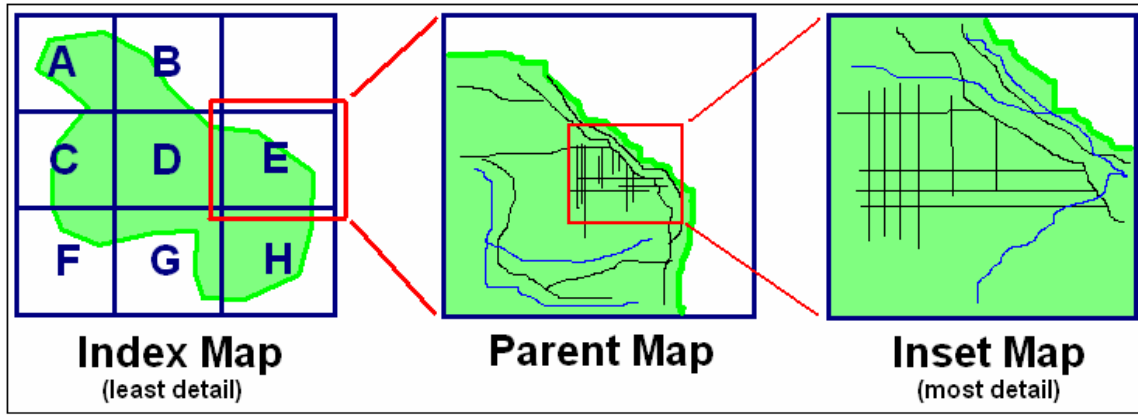
If you are unsure as to the type of statistical area you are verifying, please contact the RCC.

2.2 Paper Map Based Verification

Participants who returned their initial submission on paper maps should use the enclosed maps to verify their statistical areas and line features. The types of paper maps you receive will vary depending on the size and mapping complexity of your American Indian Area (AIA). AIAs that are smaller in land area may only receive a single mapsheet while other AIAs with large land areas may receive an index map, a series of parent maps, and a number of inset maps. As demonstrated in Figure 1, an index map shows the complete AIA with gridlines defining specific areas shown on each parent map. A parent map shows a detailed version of a single grid box from the index map, and an inset map shows finer details

of areas within the parent map where the feature network is too dense to represent clearly at the map scale of the parent map. You can think of the inset map as a “blow-up” of a specific area.

Figure 1.



Follow the steps below to verify and make corrections to the delineations:

1. Carefully review all boundaries of your statistical areas and any line features of concern.
2. If changes are needed, participants should annotate the paper maps as needed. Delete an existing boundary by drawing “X”s along that boundary using the appropriate colored pencil. The Census Bureau requests that participants annotate boundary corrections using
 - a pencil with **blue** lead to correct tribal census tract boundaries,
 - a pencil with **orange** lead to correct tribal block group boundaries,
 - a pencil with **purple** lead to correct Oklahoma Tribal Statistical Areas (OTSAs), and
 - a pencil with **red** lead to correct Alaska Native Village Statistical Areas (ANVSAs), tribal census designated places (CDPs), Tribal Designated Statistical Areas (TDSAs), or State Designated Tribal Statistical Areas (SDTSAs). CDPs delineated to share boundaries with another statistical area should use **red** circles to depict the CDP boundary.

More detailed procedures for annotating paper maps, including the delineation of tribal statistical areas are provided in the supplementary documentation, *Review of Delineation Criteria, Guidelines and Procedures*.

3. If no corrections are needed, please return the *No Changes* postcard. If corrections are being requested, return the annotated map(s) to the Census Bureau following the procedures in Section 3.0. Participants may also scan any annotations and email those images if the needed corrections are minimal and easily interpreted from the scanned images. (RCC contact information is included in Appendix 1.)

2.3 Digital Verification

There are two options for digital verification. Participants who returned digital files in the delineation phase may choose to review PDF map files or GIS shapefiles. Both PDF map files and GIS shape files

are included on the enclosed CD/DVD. The PDF map files are digital copies of the paper maps presented in the previous section (found in the *PDF_maps* folder on the enclosed disc). The GIS shape files are meant to be used with the TSAP Extension – a custom ESRI® ArcGIS® ArcMap™ (version 9.2) software extension especially designed for delineating tribal statistical areas.

Digital Verification with PDF map files

PDF map files may be used to verify your tribal statistical areas and line features by following the steps outlined below.

1. Open the PDF map files with Adobe Acrobat or any other software capable of opening PDF file types.
2. Carefully review all statistical area boundaries and any line features of concern.
3. If corrections are necessary, you may either digitally annotate the map files or print the maps using your local printer and follow the paper map verification instructions (refer to Section 2.2).

Digital annotation may be accomplished by making and marking-up the screenshots with a digital image program such as Microsoft® Paint® (included with the Microsoft® Windows® operating system). Participants owning Adobe® Professional® or another Adobe software capable of editing PDF files could also use the editing and sketch tools inherent to that software program.

The Census Bureau requests that participants correct tribal census tract boundaries with **blue**, annotate tribal block group boundaries with **orange**, annotate Oklahoma Tribal Statistical Areas (OTSAs) with **purple**, and annotate Alaska Native Village Statistical Areas (ANVSAs), tribal census designated places (CDPs), Tribal Designated Statistical Areas (TDSAs), and State Designated Tribal Statistical Areas (SDTSAs) with **red**. *For further guidance annotating maps, participants should reference the supplemental documentation, Review of Delineation Criteria, Guidelines and Procedures.*

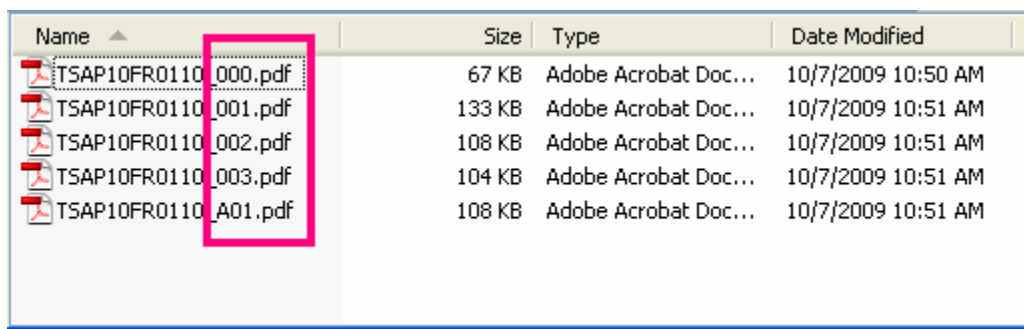
In the screenshot below, a tribal census tract boundary has been annotated by the blue line. Both tribal census tracts have also been



4. If no corrections are needed, please return the *No Changes* postcard. If corrections are being requested, return the annotated screenshot(s) or PDF map files to the Census Bureau. Participants emailing any annotated screenshots or PDF map files are requested to also call the RCC so that the Census Bureau is aware of your incoming email correspondence. See Section 3.0 for instructions on submitting your corrections to the Census Bureau.

The types of PDF map files you receive will vary depending on the size and mapping complexity of your American Indian Area (AIA). AIAs that are smaller in land area may only receive a single mapsheet while other AIAs with large land areas may receive an index map, a series of parent maps, and a number of inset maps. (Refer to page 6 for an explanation of the Census Bureau’s mapping layouts.)

PDF map files will all follow a suffix naming convention as depicted in the image below. The *Index Map* has a suffix of *000*. All *Parent Maps* have a chronologically ascending suffix: *001*, *002*, *003*, etc. Any *Inset Maps* include a letter in the first character of the suffix with the suffix ending in the number of the *Parent Map*. For example, *A01* is an *Inset Map* from the *Parent Map 001*.




Name	Size	Type	Date Modified
TSAP10FR0110_000.pdf	67 KB	Adobe Acrobat Doc...	10/7/2009 10:50 AM
TSAP10FR0110_001.pdf	133 KB	Adobe Acrobat Doc...	10/7/2009 10:51 AM
TSAP10FR0110_002.pdf	108 KB	Adobe Acrobat Doc...	10/7/2009 10:51 AM
TSAP10FR0110_003.pdf	104 KB	Adobe Acrobat Doc...	10/7/2009 10:51 AM
TSAP10FR0110_A01.pdf	108 KB	Adobe Acrobat Doc...	10/7/2009 10:51 AM

Digital Verification with GIS Shape Files

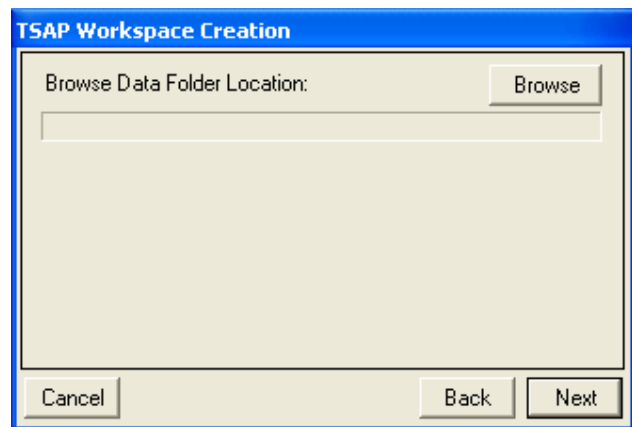
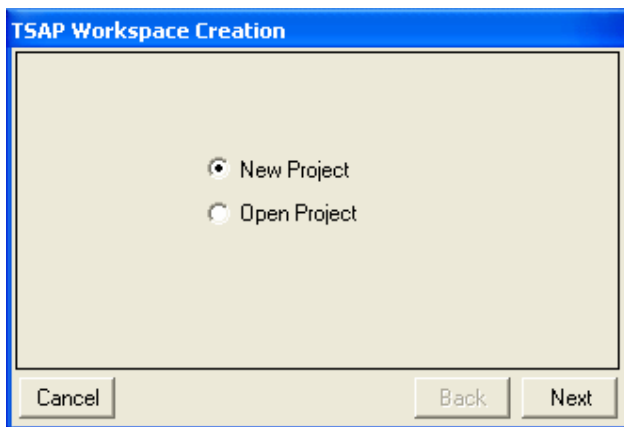
The GIS shapefiles included on the enclosed CD/DVD are meant to be utilized with the TSAP Extension, an ESRI® ArcGIS® ArcMap™ (version 9.2) software extension. The TSAP Extension is the same extension as used during the initial winter 2009 delineation phase. Sections C and D of supplementary documentation, *Review of Delineation Criteria, Guidelines and Procedures*, offer guidance and examples for using the extension to delineate statistical areas. In addition, the original extension guidelines document - *2010_TSAP_Extension_guidelines.pdf* – is included on the enclosed CD/DVD.

Follow the steps below to verify delineations with GIS shape files and the TSAP Extension.

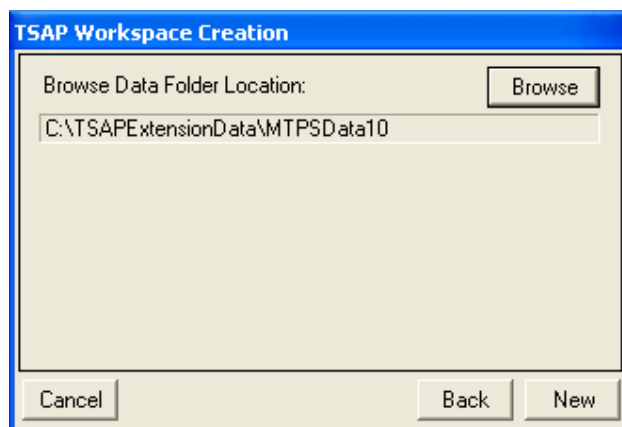
1. Copy all contents of the disc to a local directory (i.e. *Verification Data Folder*) on your Personal Computer. If you used the TSAP extension for your original delineations, please create another directory for verification and **do not replace your original data folder directory with the verification files.**
2. Install the TSAP Extension (included on your CD/DVD) if necessary (Use the *2010_TSAP_Extension_guidelines.pdf* document for installation and setup procedures).
3. Open ArcMap and enable the extension (again refer to the *2010_TSAP_Extension_guidelines.pdf* for enabling procedures).
4. With ArcMap open and the extension enabled, start a *new* TSAP project.

a. New TSAP projects are started and existing projects opened by clicking on the *Show Project Manager* command button  found on the *TSAP Management* toolbar. This begins the process of establishing a workspace that will contain the files necessary for the verification of your statistical areas. TSAP projects can **only** be started and reopened with the *Show Project Manager* command button. *ArcMap's standard Open Project command should not be used when working with a TSAP project.*

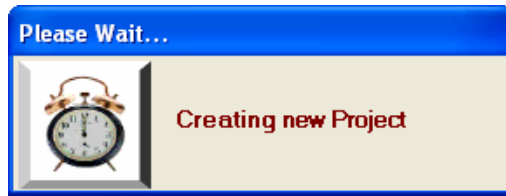
b. After clicking the *Show Project Manager* command button, the *TSAP Workspace Creation* window appears. Select *New Project* and click the *Next* button. The following window will prompt you to enter the location of your *Verification Data Folder*. This is the folder where the data from the TSAP Verification CD/DVD was placed during the installation and setup process. Click the *Browse* button to navigate to the *Verification Data Folder*. (The *Verification Data Folder* must be stored on a local directory with write access).



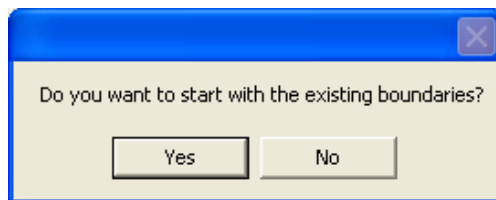
c. Once your *Verification Data Folder* is located, the directory path will be displayed in the window similar to the example below. To continue and create your verification workspace, click the *New* button.



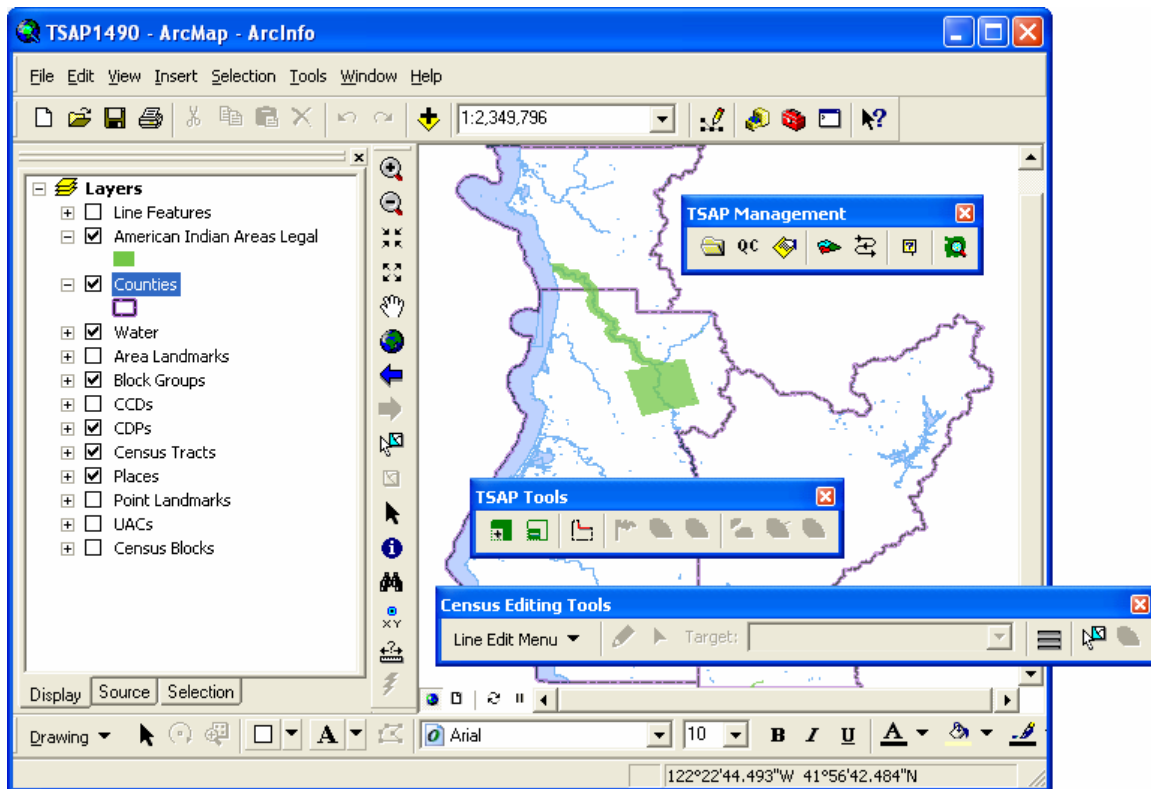
As the verification workspace is being created and essential files are assembled a message window will be displayed. This process could take several minutes or longer depending upon the size of the files for your project's geographic area.



After the verification workspace has been created, you will be prompted with a message box as shown below. Choose *Yes* so that you may proceed to load the *existing boundaries* of your statistical areas into the project. By *existing boundaries*, the Census Bureau is referring to the boundaries currently in our databases that are included on the enclosed verification CD/DVD. If you choose *No* the program will load empty shape files for delineation rather than the verification shape files you will need for your review.



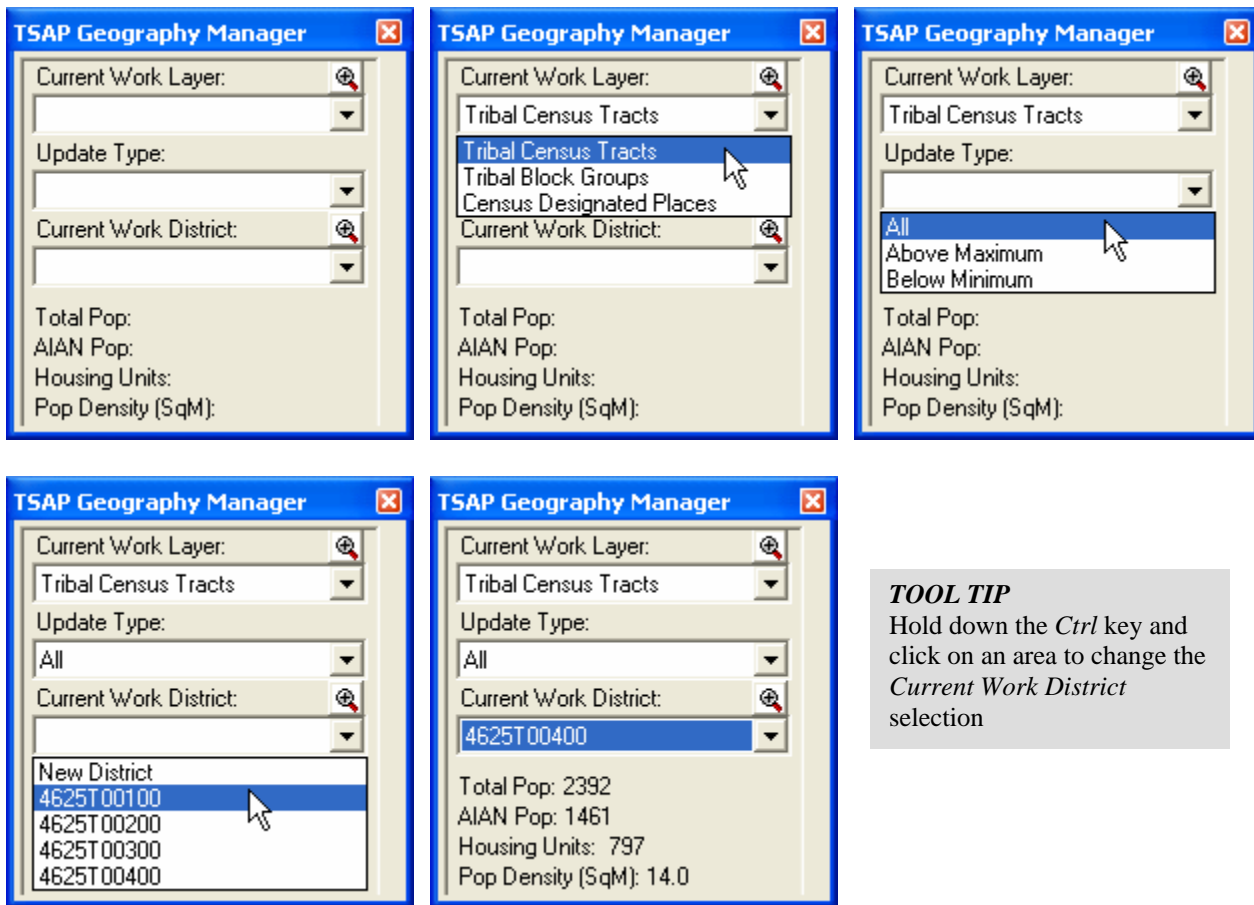
Your new project workspace will appear similar to the example project image below.



5. Review your statistical boundaries and any line features of interest. Using the *TSAP Geography Manager*, select your appropriate statistical area(s). The *TSAP Geography Manager* is activated by clicking once on the *Show/Hide TSAP Geography Manager* button in the *TSAP Management* toolbar. The pull-down menus of the *TSAP Geography Manager* will offer the statistical areas which you were originally eligible to delineate (e.g. ANVSAs, tribal census tracts, tribal block groups, etc.).

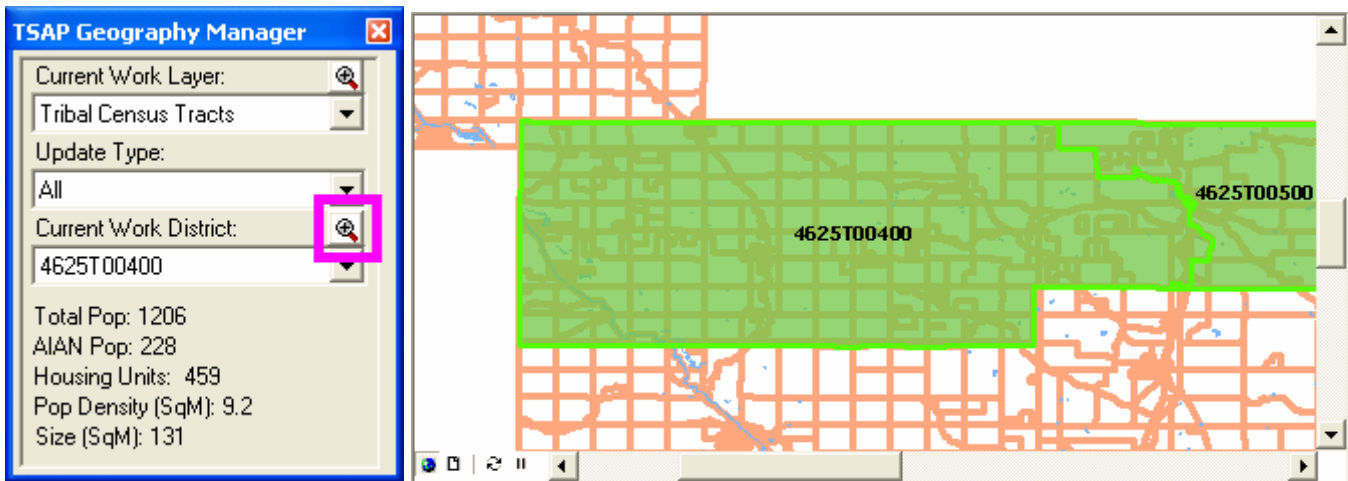
The series of images below depicts how a participant would use the pull-down menus to identify tribal census tracts for verification review. Notice in the final image, after tribal census tract 4625T00400 is selected the demographic data (from the 2000 Census) becomes visible.

The Census Bureau recommends participants identify each area and review the demographic data, checking to see that all areas contain the expected population and housing unit counts (as based upon the 2000 Census data – not current counts). Tribes can submit more current projected population or housing counts to justify a defined area if they are available from the tribes planning records.




TOOL TIP
Hold down the *Ctrl* key and click on an area to change the *Current Work District* selection

Concurrent to the review of population and housing unit counts, participants should also review their statistical area boundaries. This can be quickly accomplished with the *Zoom* tools included in the *TSAP Geography Manager*. Once an area has been selected you may zoom to the extent of that particular area by clicking on the *Zoom* tool button located above the pull-down menu for the *Current Work District*. The tool is highlighted, in the image below left, by a pink square. The image to the below right demonstrates the zoom extent displayed after clicking on the *Zoom* tool while the tribal census tract 4625T00400 is selected.



While reviewing your statistical areas be careful to notice if any boundary changes you delineated during the original submission phase have been correctly included in our database. This review should particularly include the review of boundaries where new line features were added to be used as a boundary.

The geographic review of statistical areas may result in the discovery of minor differences between our databases and your original submission files. Differences could include slivers or small adjustments made to line features that slightly affect the boundaries of your statistical areas. These minor differences are the result of the Census Bureau constantly updating and improving the accuracy of our geographic data. In certain cases the Census Bureau may have updated the line features used in your original delineations. If you discover changes that appear incorrect based upon your knowledge of a line feature, please include this correction in your verification materials return.

In addition to the verification shape files present you may find it useful to add your original delineation submission shape file(s) to your verification review project. After locating your TSAP delineation project add the *Complete* shape file, from the *Output* TSAP project directory, for the entity you wish to compare (using ArcMap’s standard *Add Data*  button). The *Complete* shape file will correspond as listed below for the following tribal statistical areas:

Statistical Area	Complete Shape File Name
ANVSA	TSAP08_<4 digit tribal area code>_Complete_anvsa.shp
OTSA Tribal Subdivision	TSAP08_<4 digit tribal area code>_Complete_otsasub.shp
Tribal Census Tract	TSAP08_<4 digit tribal area code>_Complete_tct.shp
Tribal Block Group	TSAP08_<4 digit tribal area code>_Complete_tbg.shp

Statistical Area	Complete Shape File Name
CDP	TSAP08_<4 digit tribal area code>_Complete_cdp.shp
TDSA	TSAP08_<4 digit tribal area code>_Complete_tdsa.shp
SDTSA	TSAP08_<4 digit tribal area code>_Complete_sdtsa.shp
State Reservation	TSAP08_<4 digit tribal area code>_Complete_stres.shp

6. If no corrections are needed, please return the *No Changes* postcard. If corrections are necessary, evaluate your most effective method to accomplish these corrections. Minimal corrections may be more easily communicated through annotated screenshots of the PDF map files or screenshots of your ArcMap verification project (presented earlier in this section). Major corrections may require delineating entities with the TSAP Extension. For convenience, the supplemental documentation provides a review of the delineation criteria, guidelines and procedures. Instructions for submitting your verification materials to the Census Bureau are presented in the next section of this document (Section 3.0).

If you are uncertain which digital verification method best suits the changes you wish to communicate, please contact the Census Bureau RCC. Contact information for the RCCs is found in Appendix 1.

3.0 Submitting Verification Corrections to the U.S. Census Bureau

3.1 Uploading Electronic Files

You may send your TSAP ArcGIS extension output files, marked up PDFs, and/or screenshot images on a CD or DVD to the appropriate Census Bureau RCC or you can use the Census Bureau's *Public File Send Utility* and found online at:

<https://secure.census.gov/cgi-bin/sendfile>

Use the following steps to send your files to us via the *Public File Send Utility* (see the following page for a screenshot of the website):

1. Compress all electronic files you wish to send to the Census Bureau into a *.zip archive. Name the file ***TSAP<tribal area code>_verification.zip***. Your tribal area code is found in parentheses after the *Area Name* in the lower right hand corner of both paper maps and PDF map files. It is also found in the title bar of your TSAP ArcGIS extension project.
2. Navigate to the Census Bureau's *Public File Send Utility* <https://secure.census.gov/cgi-bin/sendfile>
3. Upon navigating to the Census Bureau's *Public File Send Utility* site a password window will pop-up. TSAP participants have been supplied the Username and Password in the Cover Letter received with these guidelines.

The Username and Password pop-up window will appear as pictured below.



4. After the Username and Password have been correctly entered the *Public File Send Utility* website will appear. Under **Source Information (Local)**, click on the **Browse** button to navigate to your zip archive created in the step 1 above (named *TSAP<entitycode>_verification.zip*).
5. Under the **Notify by E-mail**, type your e-mail address in the *Sender's E-mail Address*. In the *Census Bureau Employee's E-mail Address* field enter geo.tsap.list@census.gov.
6. Click the **Upload** button to send your file.

An example of the Census Bureau's *Public File Send Utility* website is pictured on the next page.

Send a File Utility

This utility is provided to assist the public with sending files to the U.S. Census Bureau. DO NOT USE this utility to send confidential, personally identifiable, or encrypted data.

This is a Census Bureau computer system. Census Bureau computer systems are provided for the processing of official U.S. Government information only. All data contained within Census Bureau computer systems are owned by the Census Bureau, and may be monitored, intercepted, recorded, read, copied, or captured in any manner and disclosed in any manner, by authorized personnel. THERE IS NO RIGHT OF PRIVACY IN THIS SYSTEM. System personnel may disclose any potential evidence of crime found on Census Bureau computer systems to appropriate authorities. USE OF THIS SYSTEM BY ANY USER, AUTHORIZED OR UNAUTHORIZED, CONSTITUTES CONSENT TO THIS MONITORING, INTERCEPTION, RECORDING, READING, COPYING, CAPTURING, and DISCLOSURE OF COMPUTER ACTIVITY. Use of this computer without authorization or for unauthorized purposes is a violation of federal law and punishable by fines or imprisonment (Public Law 99-474).

You are signed in as *geotsap*.

Source Information (Local)

File to Send:

(Note: Incoming files ARE NOT VISIBLE by the public. Overwriting of an existing file will not be permitted.)

Rename File (Optional)

New File Name:

(Note: DO NOT make an entry for 'New File Name' if you want to use the same name as specified in 'File to Send'.)

Notify by E-mail (Optional)

Please note that an automated email notice will be sent to the project staff. Unless you need to send a separate notice to a specific individual, you do not need to fill out this section.

Sender's Email Address:

Census Bureau Employee's E-Mail Address:

3.2 Mailing Paper and/or Electronic Files

Participants returning corrections on paper maps and/or CD/DVD may mail these verification materials to the Census Bureau using the same tube/box/envelope they received them in, using the mailing label provided. The Census Bureau's RCC geographic staff will review the submitted corrections to make sure they are complete and that statistical areas continue to meet all criteria and other requirements.













The Census Bureau's RCC staff will provide feedback to the participant on their verification corrections, and if necessary provide additional guidance on the criteria and guideline usage. They may also need to contact you with any questions or concerns regarding verification corrections.

The mailing addresses for RCCs are included in Appendix 1.

NOTE: The Census Bureau reserves the right to modify, create, or reject any boundary or attribute as needed to meet the final program criteria and guidelines, or to maintain geographic relationships before the tabulation geography is finalized for the 2010 Census.

Appendix 1. Regional Census Center’s Contact Information

See Appendix 1 to determine which RCC serves your tribe.

	<p>Atlanta RCC: Geography 285 Peachtree Center Avenue NE Marquis II Tower, Suite 1000 Atlanta, GA 30303-1230 Phone: (404) 332-2711 Fax: (404) 332-2787 E-mail: atlanta.geography@census.gov</p>	<p>Detroit RCC: Geography 300 River Place Drive, Suite 2950 Detroit, MI 48207 Phone: (313) 396-5002 Fax: (313) 567-2119 E-mail: detroit.geography@census.gov</p>	
	<p>Boston RCC: Geography One Beacon Street, 7th Floor Boston, MA 02108-3107 Phone: (617) 223-3600 Fax: (617) 223-3675 E-mail: boston.geography@census.gov</p>	<p>Kansas City RCC: Geography 2001 NE 46th Street, Suite LL100 Kansas City, MO 64116-2051 Phone: (816) 994-2020 Fax: (816) 994-2033 E-mail: kansas.city.geography@census.gov</p>	
	<p>Charlotte RCC: Geography 3701 Arco Corporate Drive, Suite 250 Charlotte, NC 28273 Phone: (704) 936-4200 Fax: (704) 936-4225 E-mail: charlotte.rcc.geography@census.gov</p>	<p>Los Angeles RCC: Geography 9301 Corbin Avenue, Suite 1000 Northridge, CA 91324-2406 Phone: (818) 717-6701 Fax: (818) 717-6778 E-mail: los.angeles.geography@census.gov</p>	
	<p>Chicago RCC: Geography 500 West Madison Street, Suite 1600 Chicago, IL 60661-4555 Phone: (312) 454-2705 Fax: (312) 488-1510 E-mail: chicago.geography@census.gov</p>	<p>New York RCC: Geography 330 West 34th Street, 13th Floor New York, NY 10001-2406 Phone: (212) 971-8800 Fax: (212) 971-8990 E-mail: new.york.rcc.geography@census.gov</p>	
	<p>Dallas RCC: Geography 2777 N Stemmons Freeway, Suite 200 Dallas, TX 75207 Phone: (214) 267-6920 Fax: (214) 267-6970 E-mail: dallas.geography@census.gov</p>	<p>Philadelphia RCC: Geography 1234 Market Street, Suite 340 Philadelphia, PA 19107-3780 Phone: (215) 717-1000 Fax: (215) 253-8001 E-mail: philadelphia.geography@census.gov</p>	
	<p>Denver RCC: Geography 6950 W Jefferson Avenue, Suite 250 Lakewood, CO 80235-2032 Phone: (720) 475-3600 Fax: (720) 962-4606 E-mail: denver.rcc.geography@census.gov</p>	<p>Seattle RCC: Geography 19820 North Creek Parkway N, Suite 100 Bothell, WA 98011 Phone: (425) 908-3010 Fax: (425) 908-3020 E-mail: seattle.geography@census.gov</p>	

Appendix 2. Disclosures to Respondents

The Geography Division manages programs to continuously update features, boundaries, addresses, and geographic entities in the Master Address File / Topologically Integrated Geographic Encoding and Referencing System (MAF/TIGER) database (MTDB) that is used to support programs and to conduct the census and surveys. The TSAP program was developed to give tribes the opportunity to review and update, if necessary, statistical tribal entities for use in tabulating and publishing data from the 2010 Census, the American Community Survey, and other surveys.

Public reporting burden for the verification of information is estimated to average 4 hours per respondent, including time for reviewing instructions, assembling materials, organizing and reviewing the information, and reporting any needed changes. We anticipate that an estimated 200 participants will respond. For larger areas or areas with many changes, however, the respondent burden may be 12 hours or longer to complete. Please send comments regarding this burden estimate or any other aspect of this collection of information, including suggestions for reducing this burden to:

Paperwork Project
0607-0795
U.S. Census Bureau
4600 Silver Hill Road
Room 3K138
Washington, D.C. 20233

You may e-mail comments to Paperwork@census.gov. Use “Paperwork Project 0607-0795” as the subject.

Responses to this survey are voluntary. The authority for conducting these activities is covered under the legal authority of Title 13 U.S.C. Sections 141 and 193.

No agency may conduct and no person may be required to respond to a collection of information unless it displays a valid Office of Management and Budget (OMB) approval number. The OMB approval number for this information collection is 0607-0795.