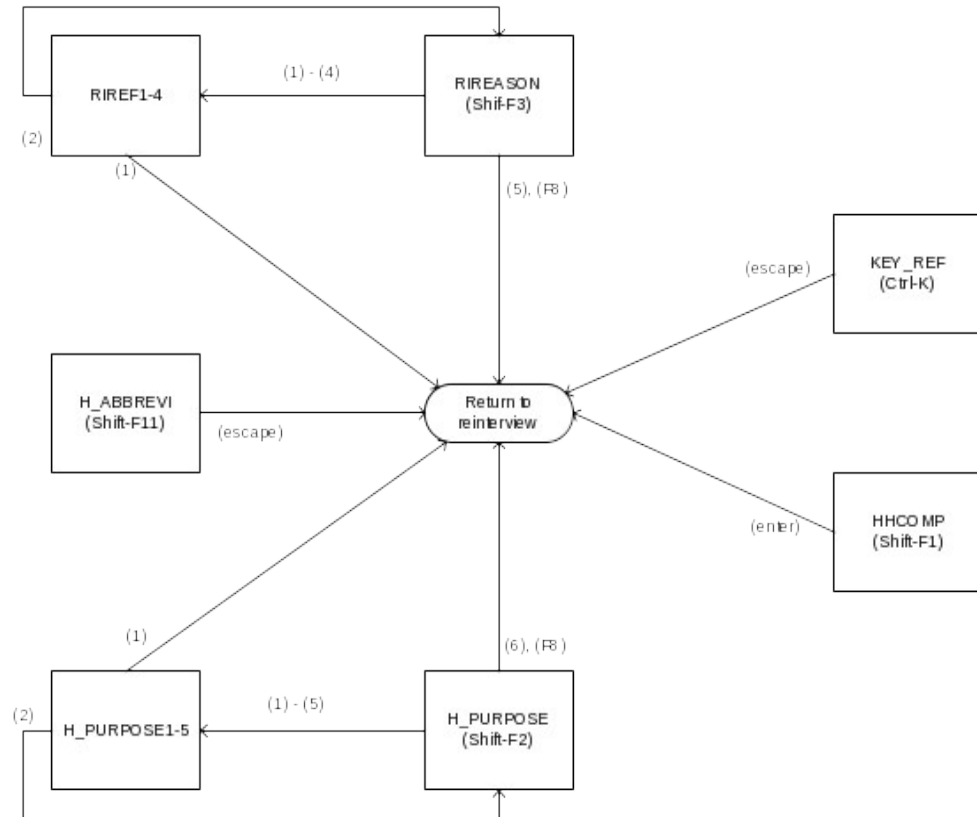


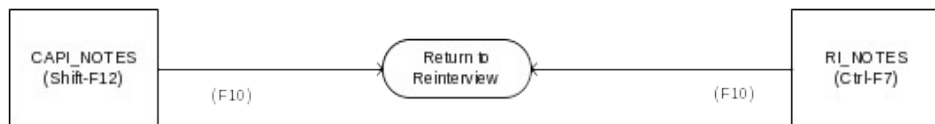
CED 2000 Sample Redesign Reinterview Blaise Instrument Flowcharts

Attachment B - final
p. 1

Reference Screens

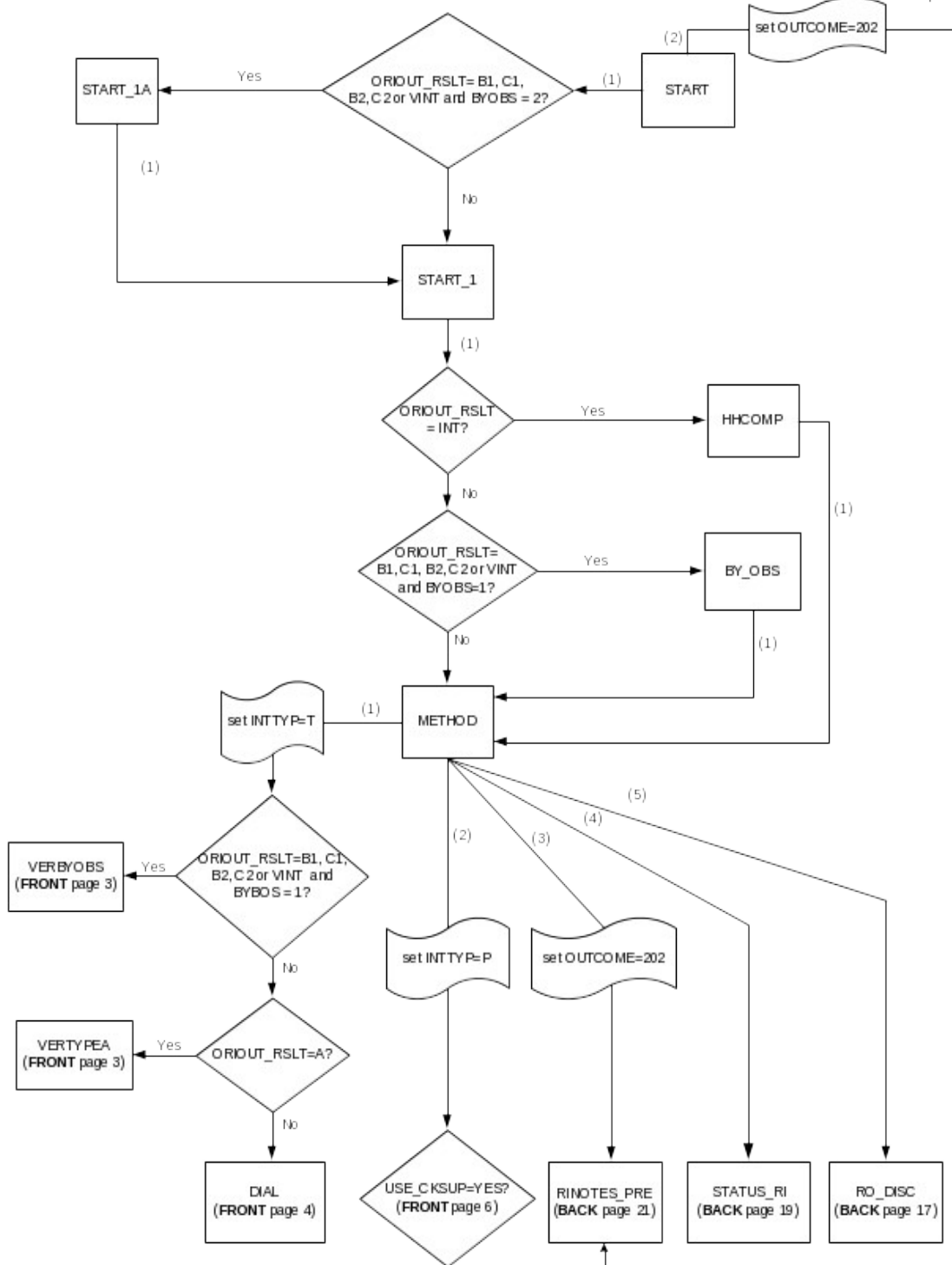


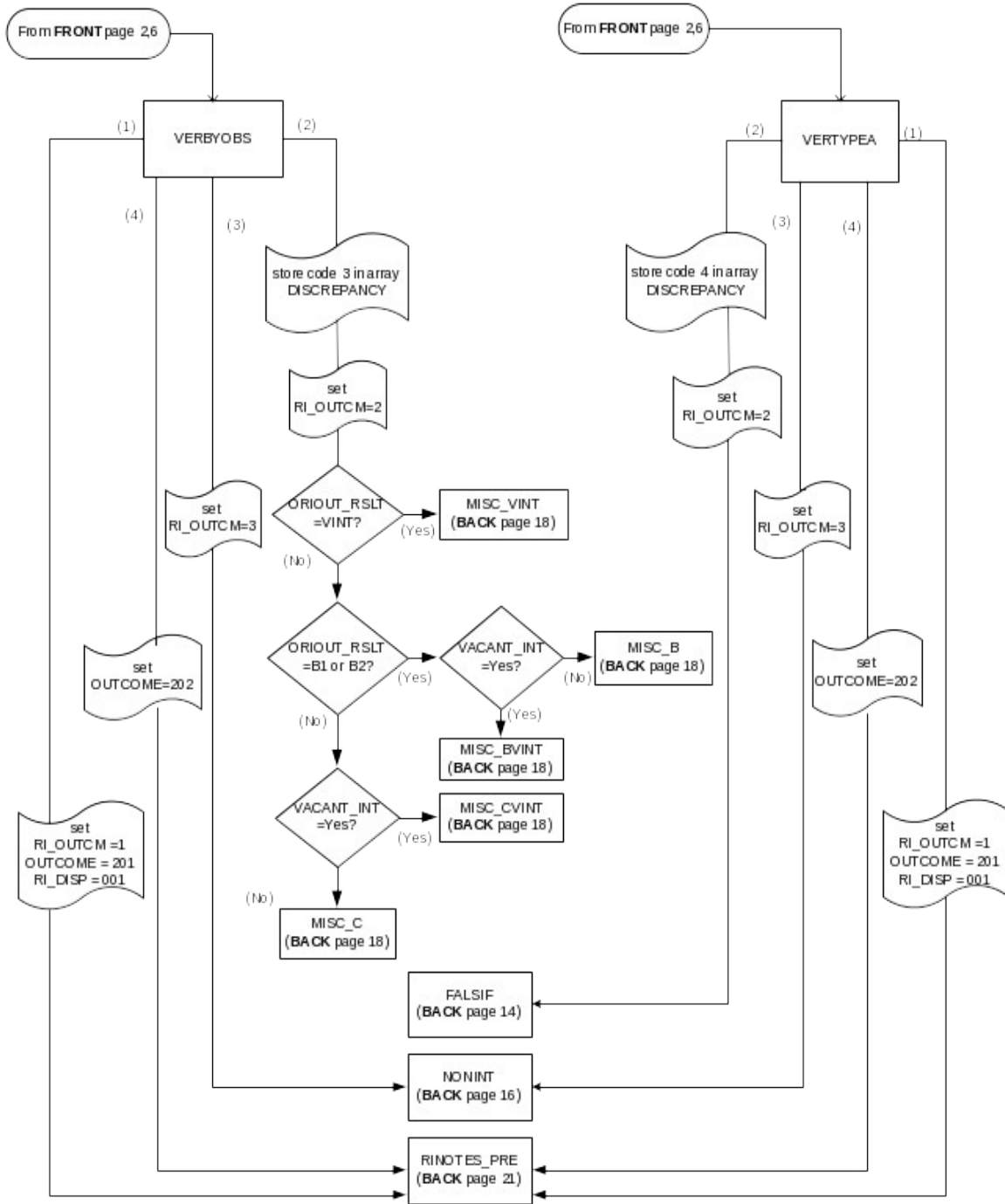
Text Files

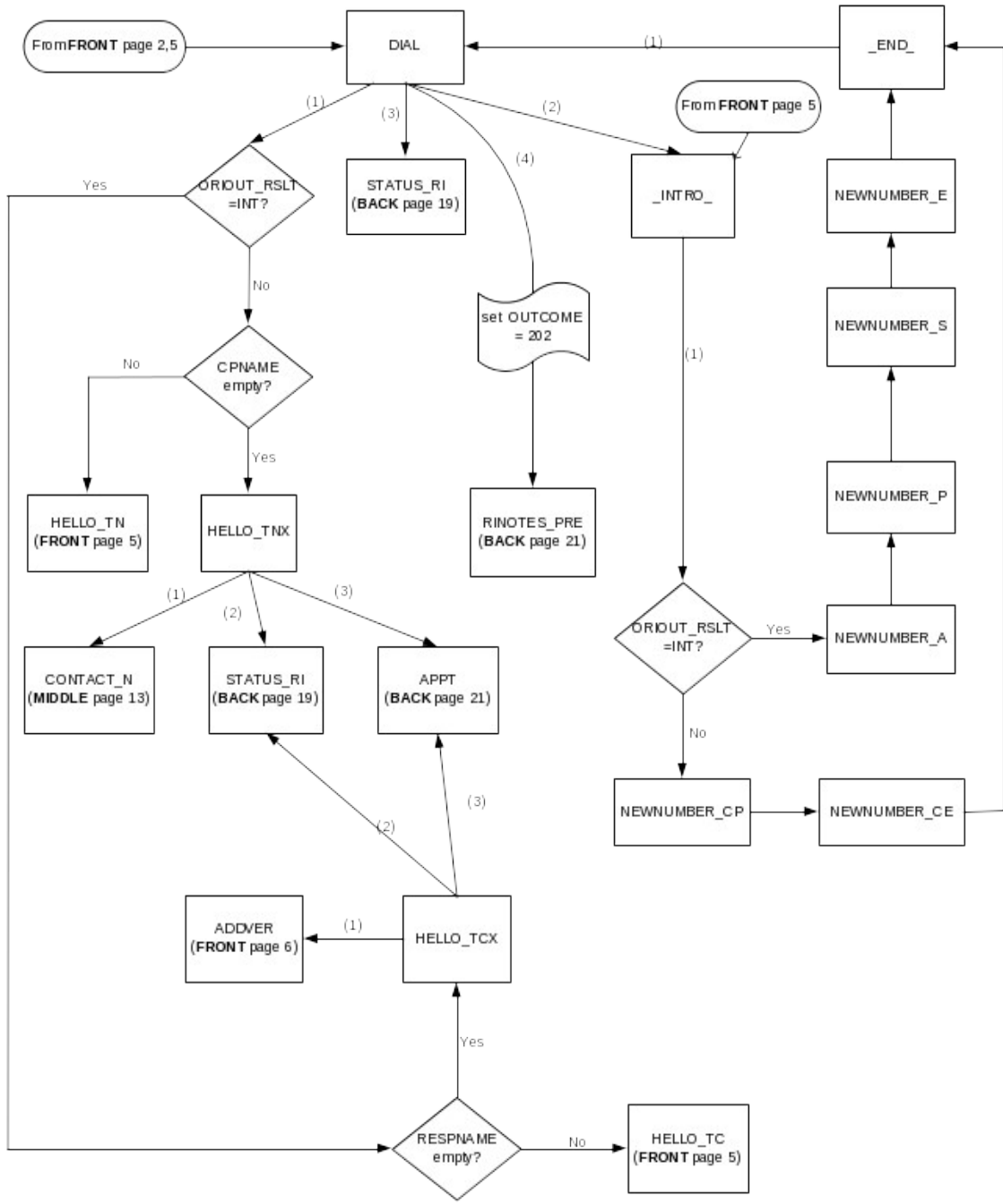


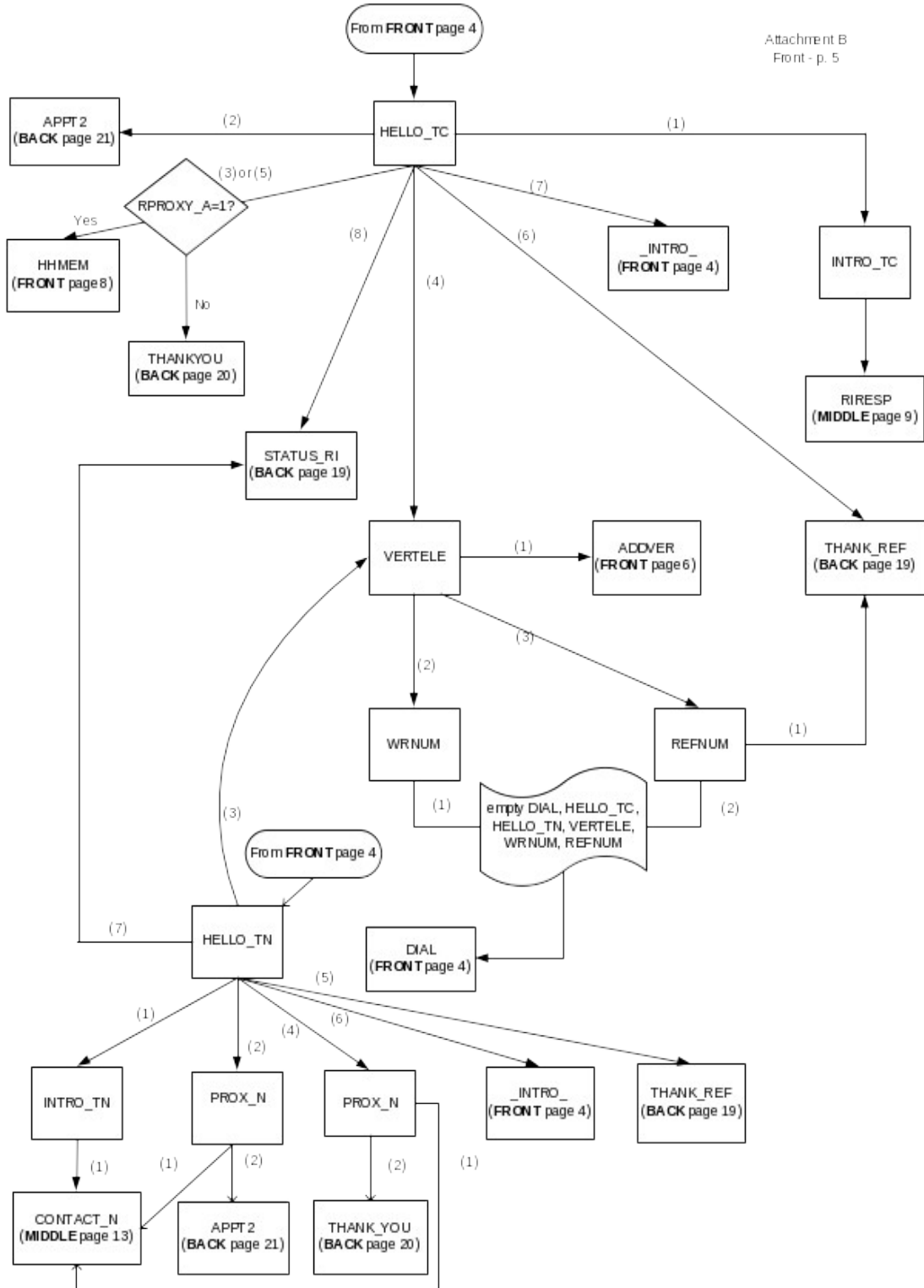
CED Reinterview Blaise Instrument Flowcharts -- Front

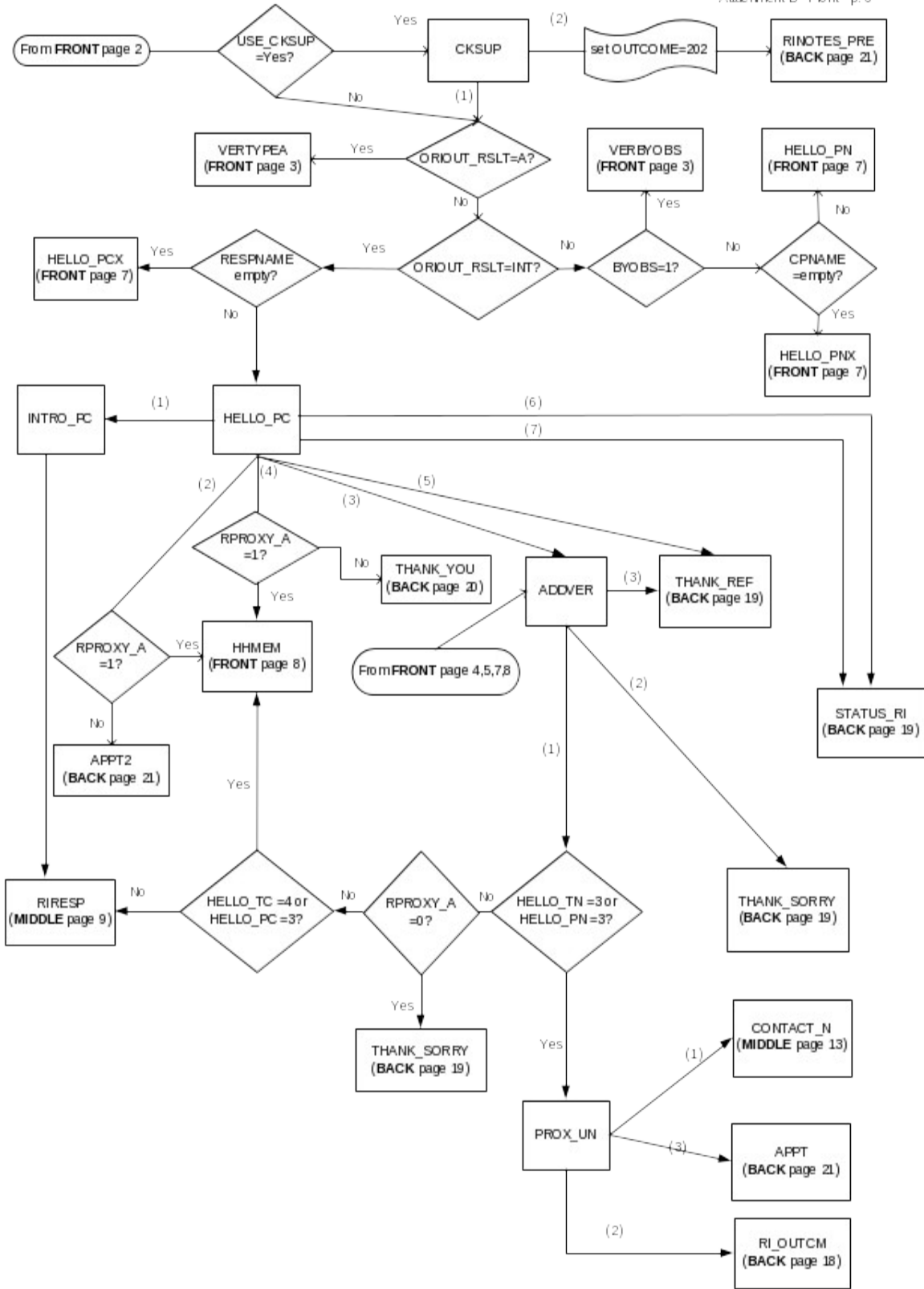
Attachment B
Front - p. 2

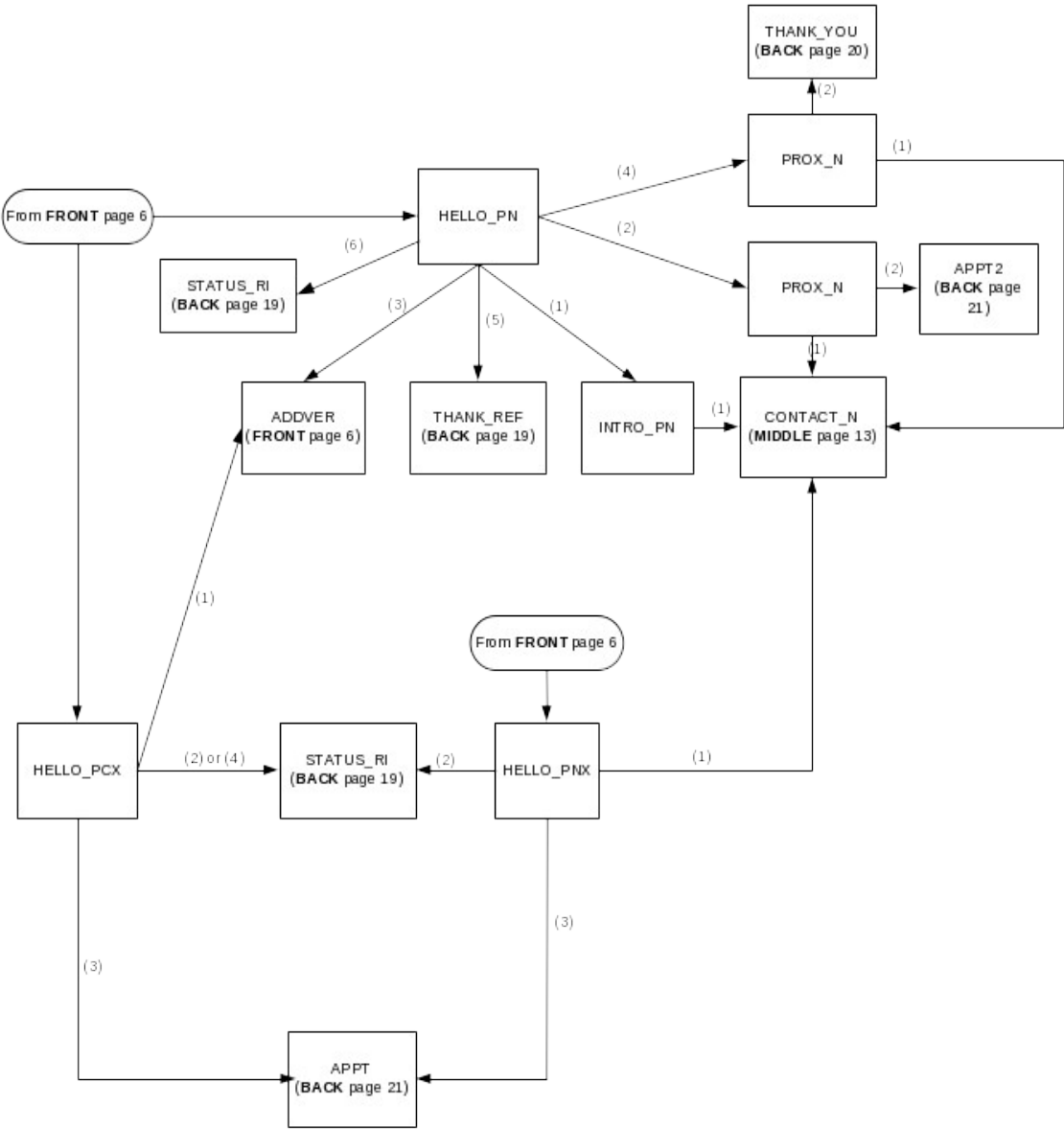


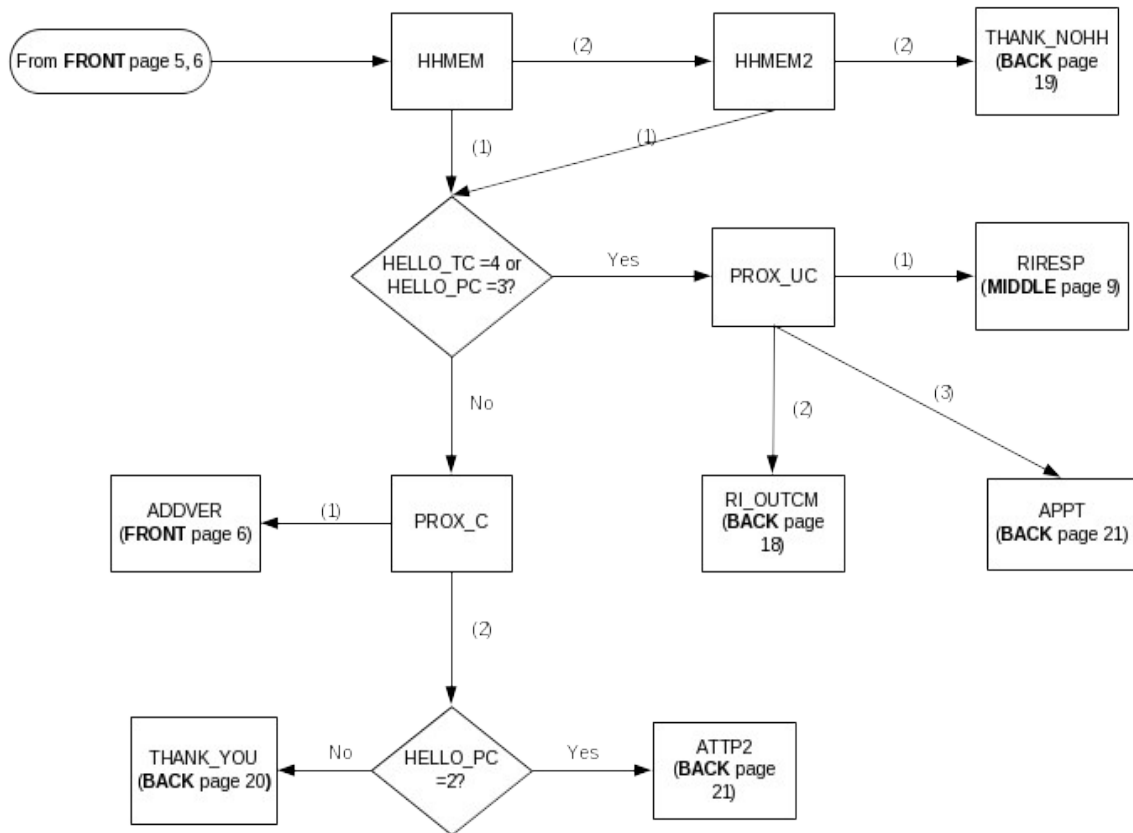






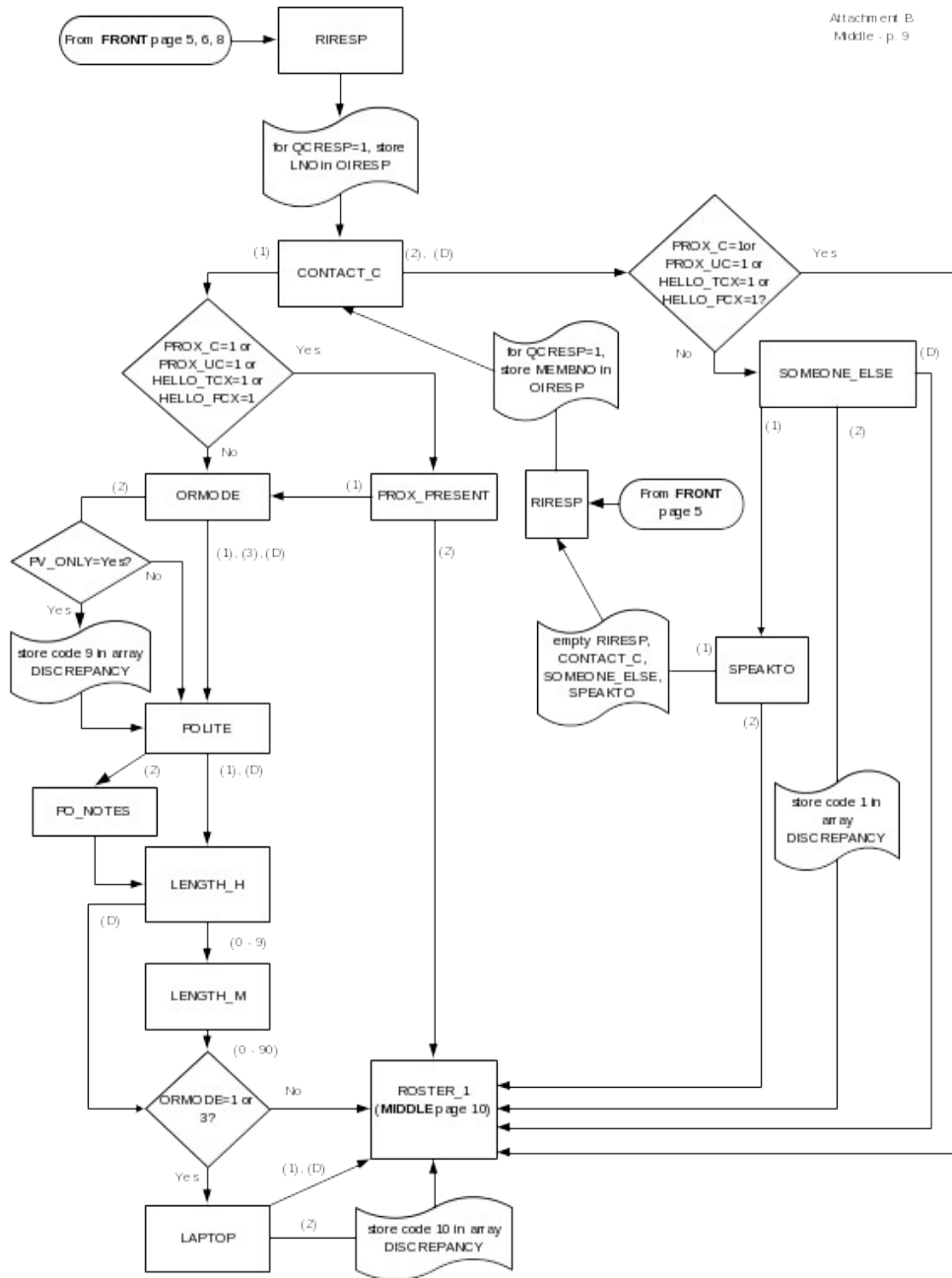


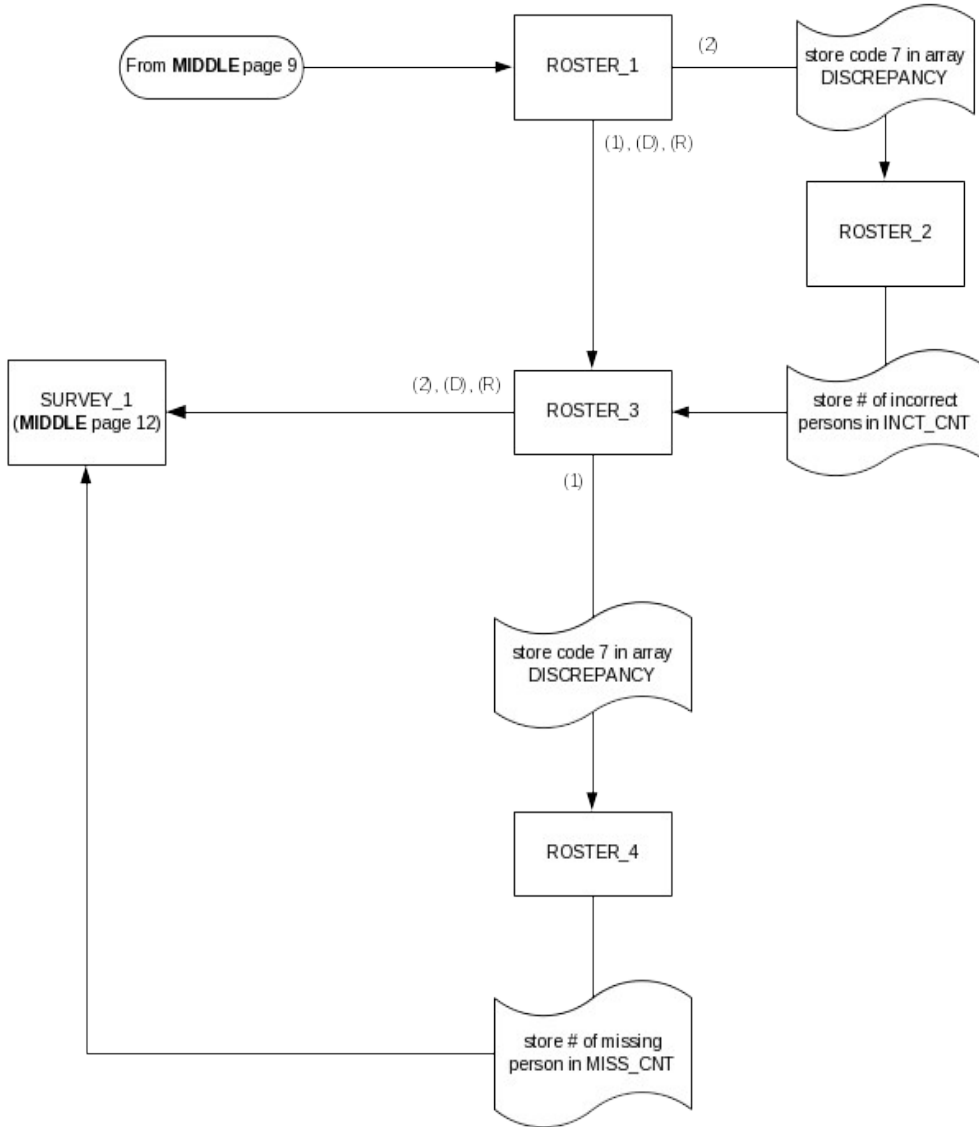


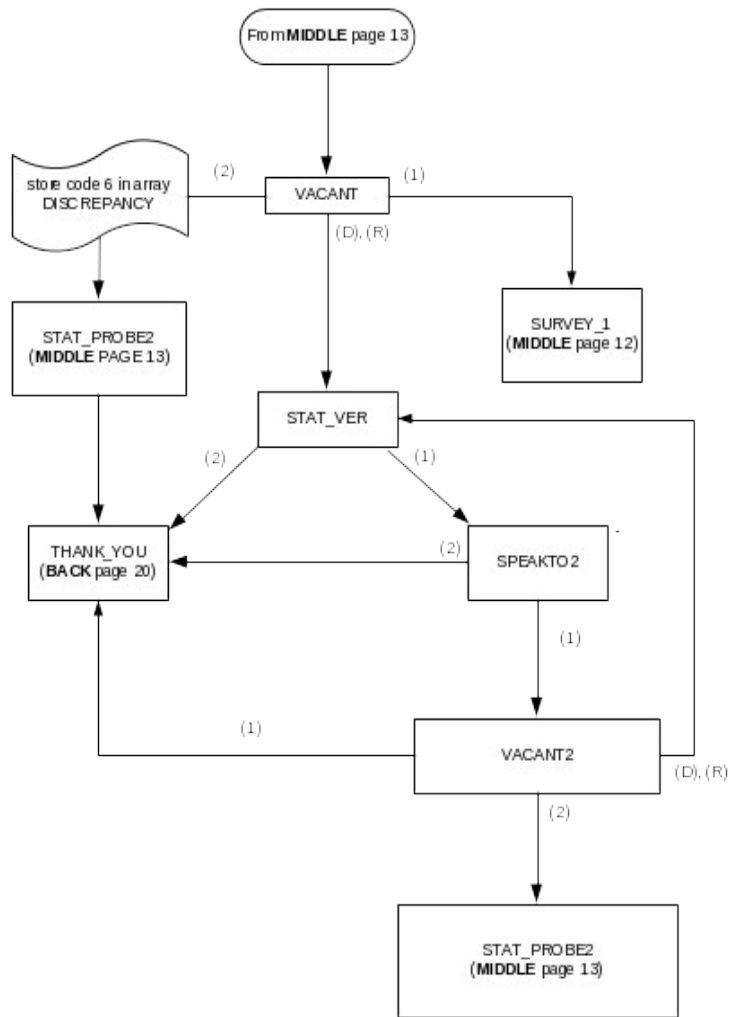


CED Reinterview Blaise Instrument Flowcharts -- Middle

Attachment B
Middle - p. 9

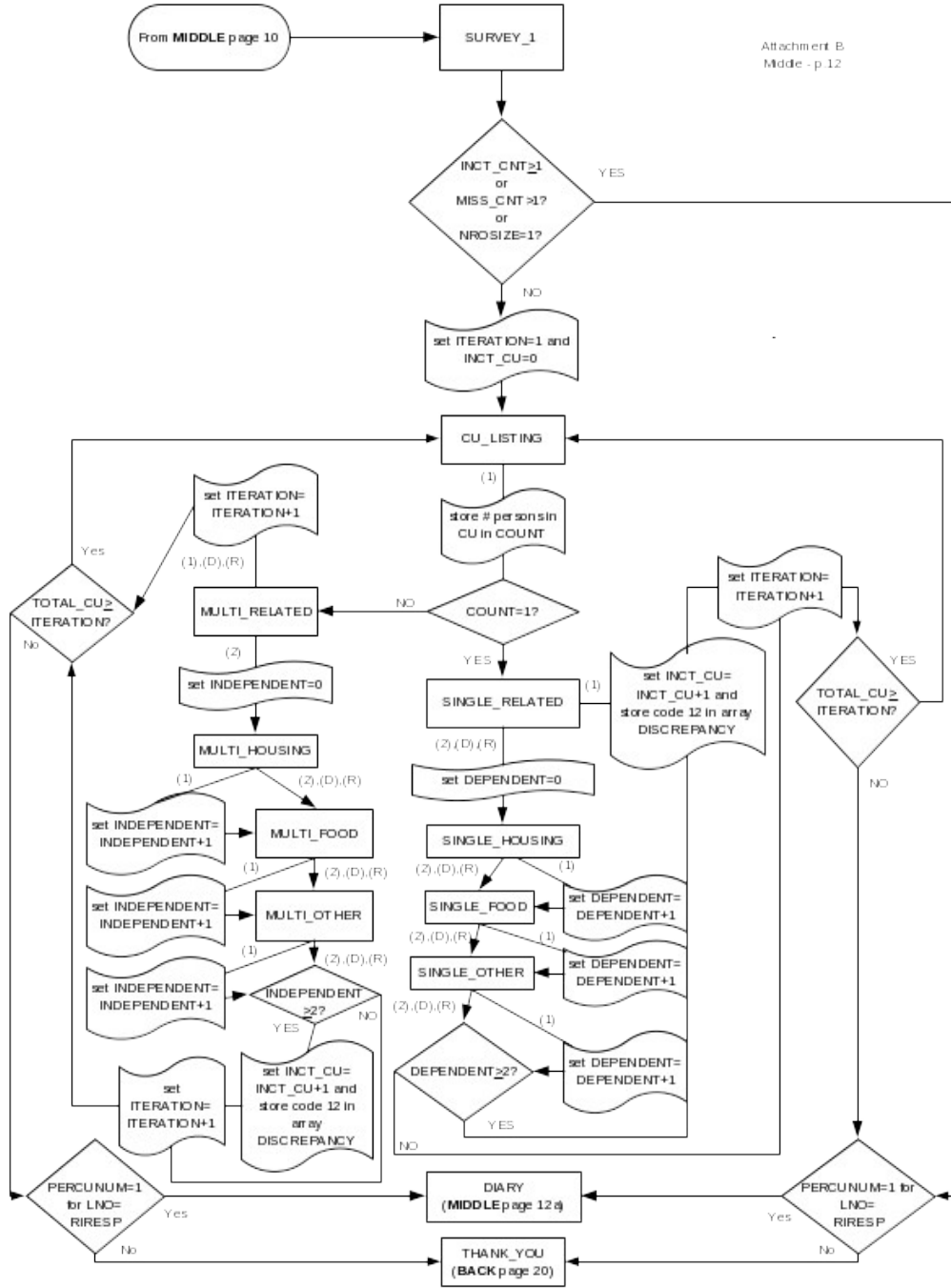


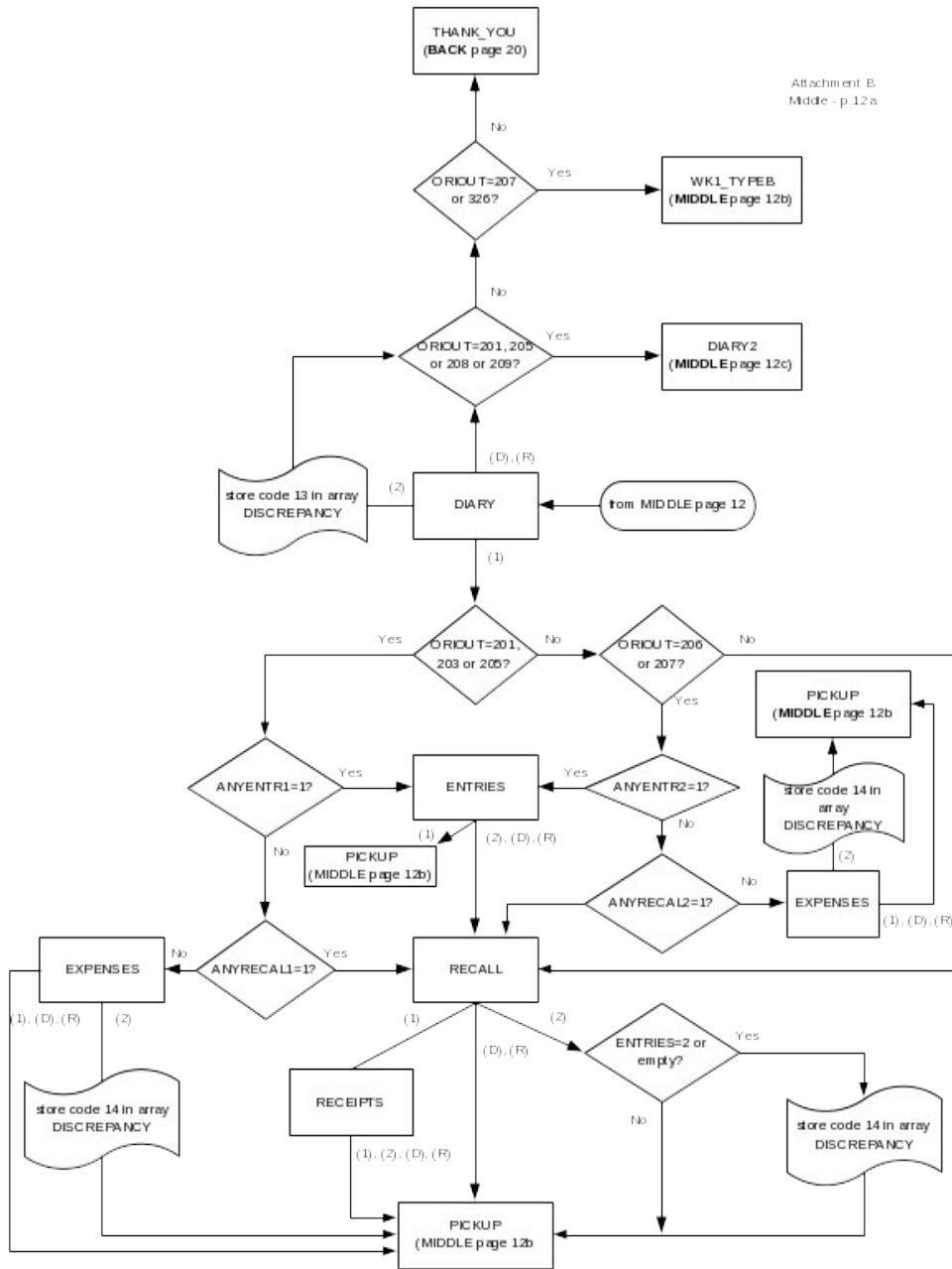


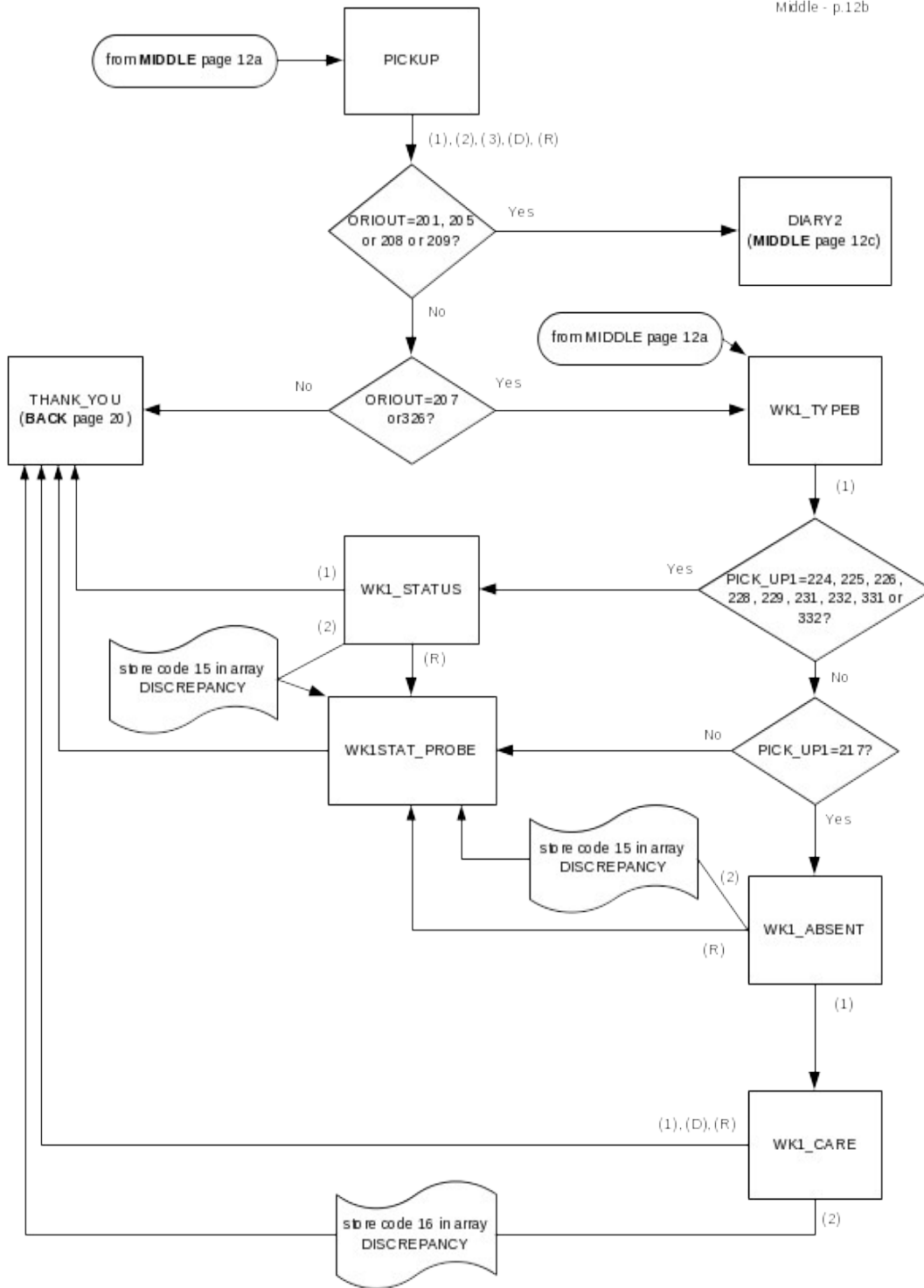


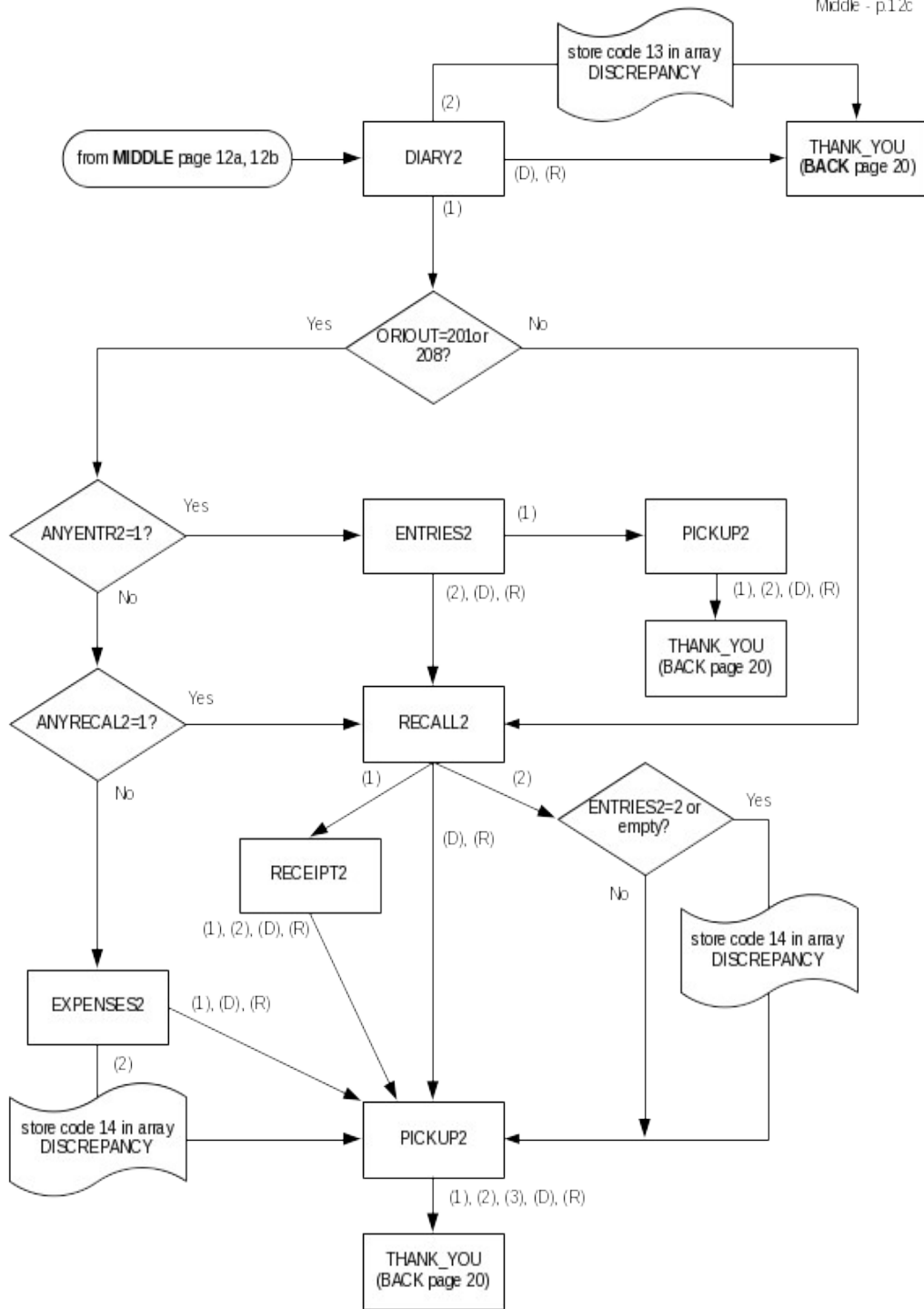
From MIDDLE page 10

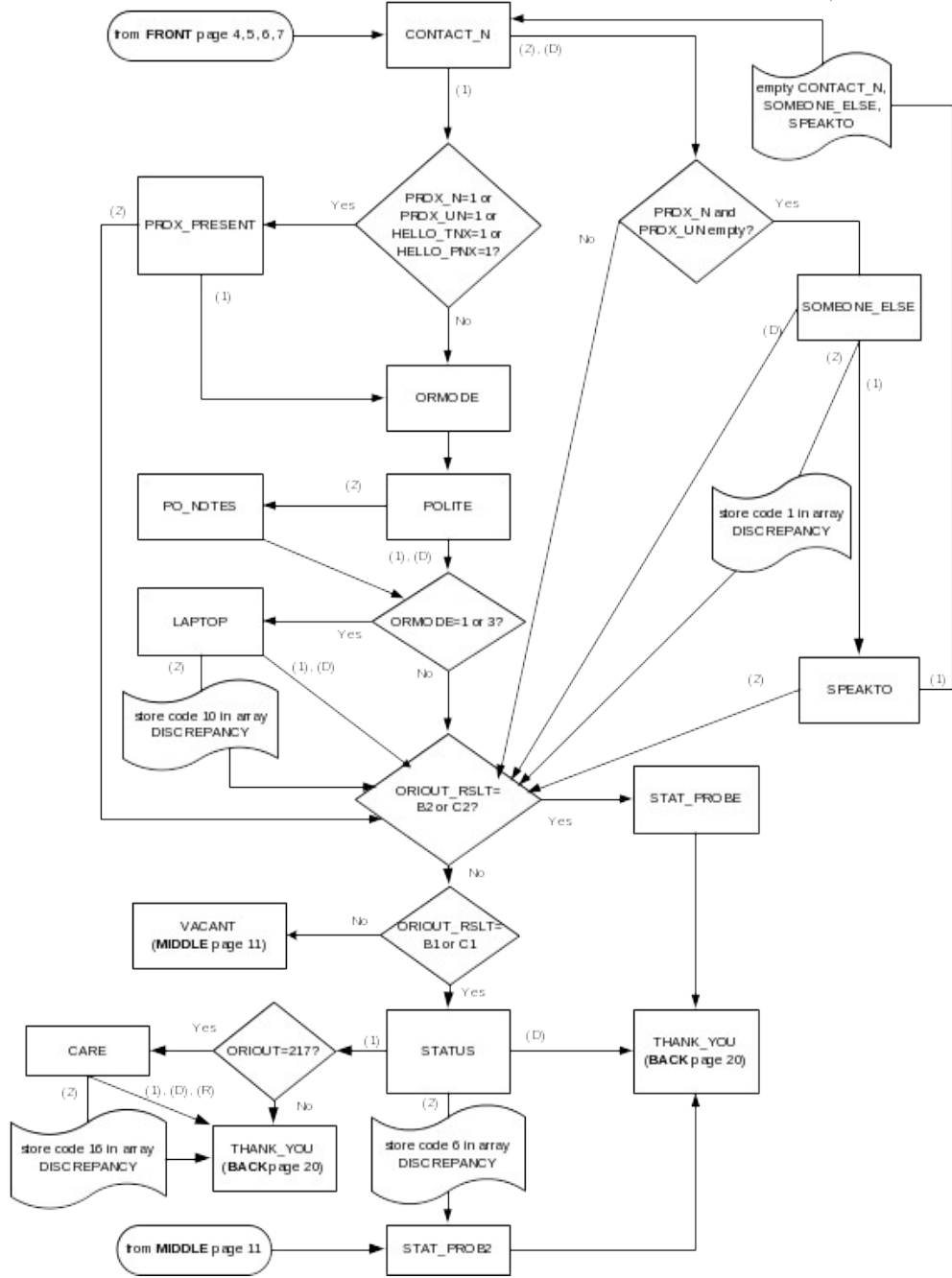
Attachment B
Middle - p.12





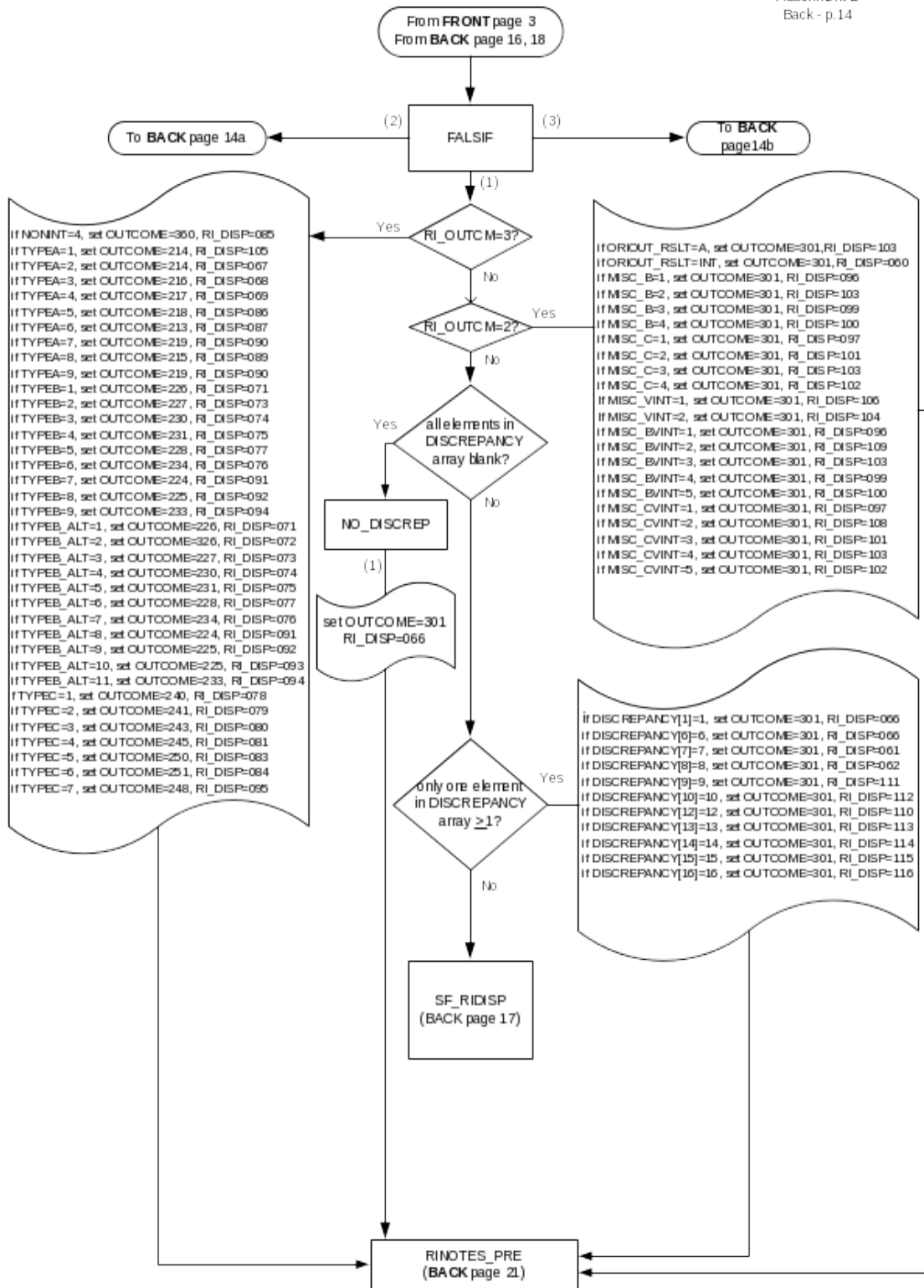


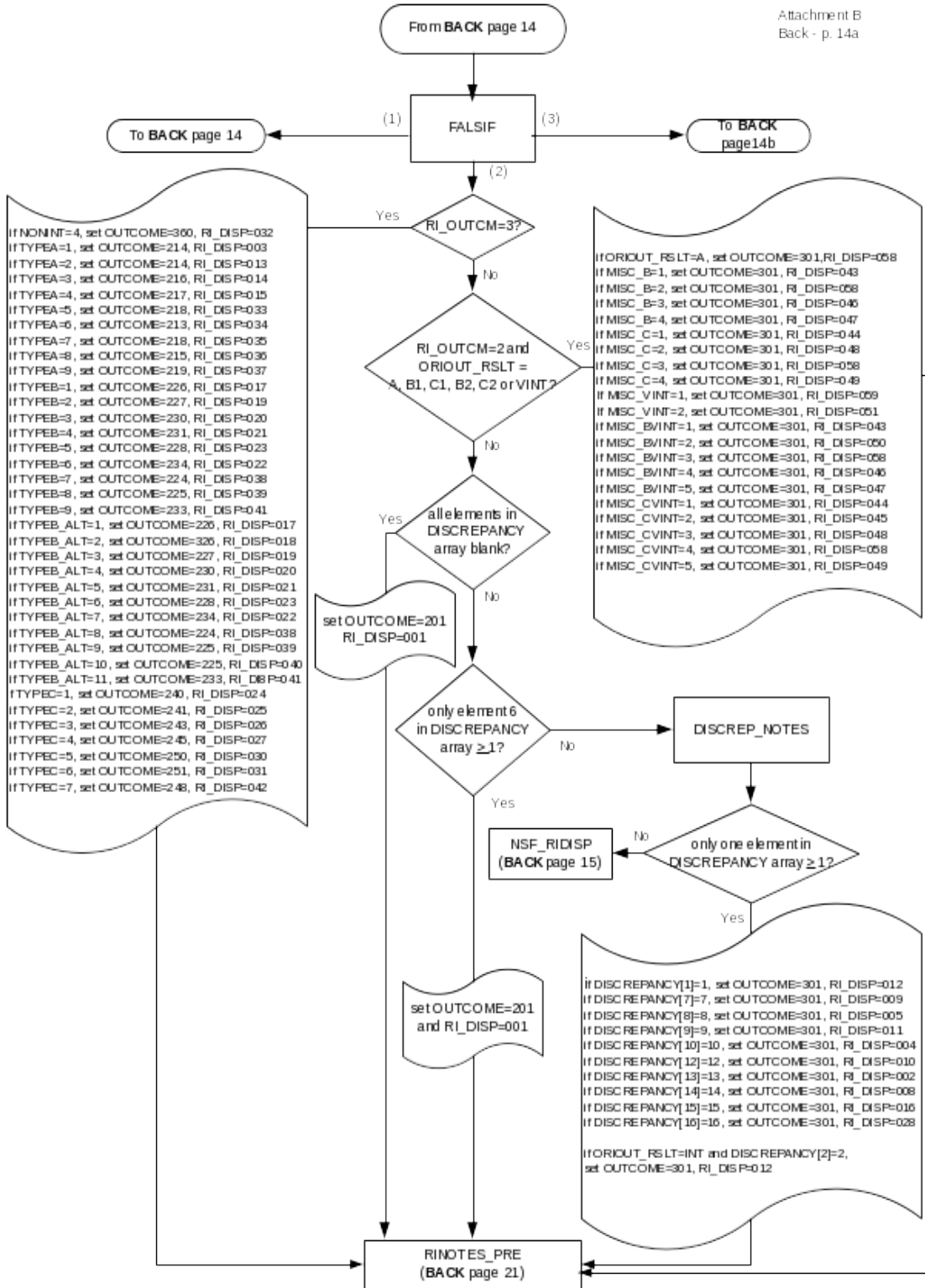


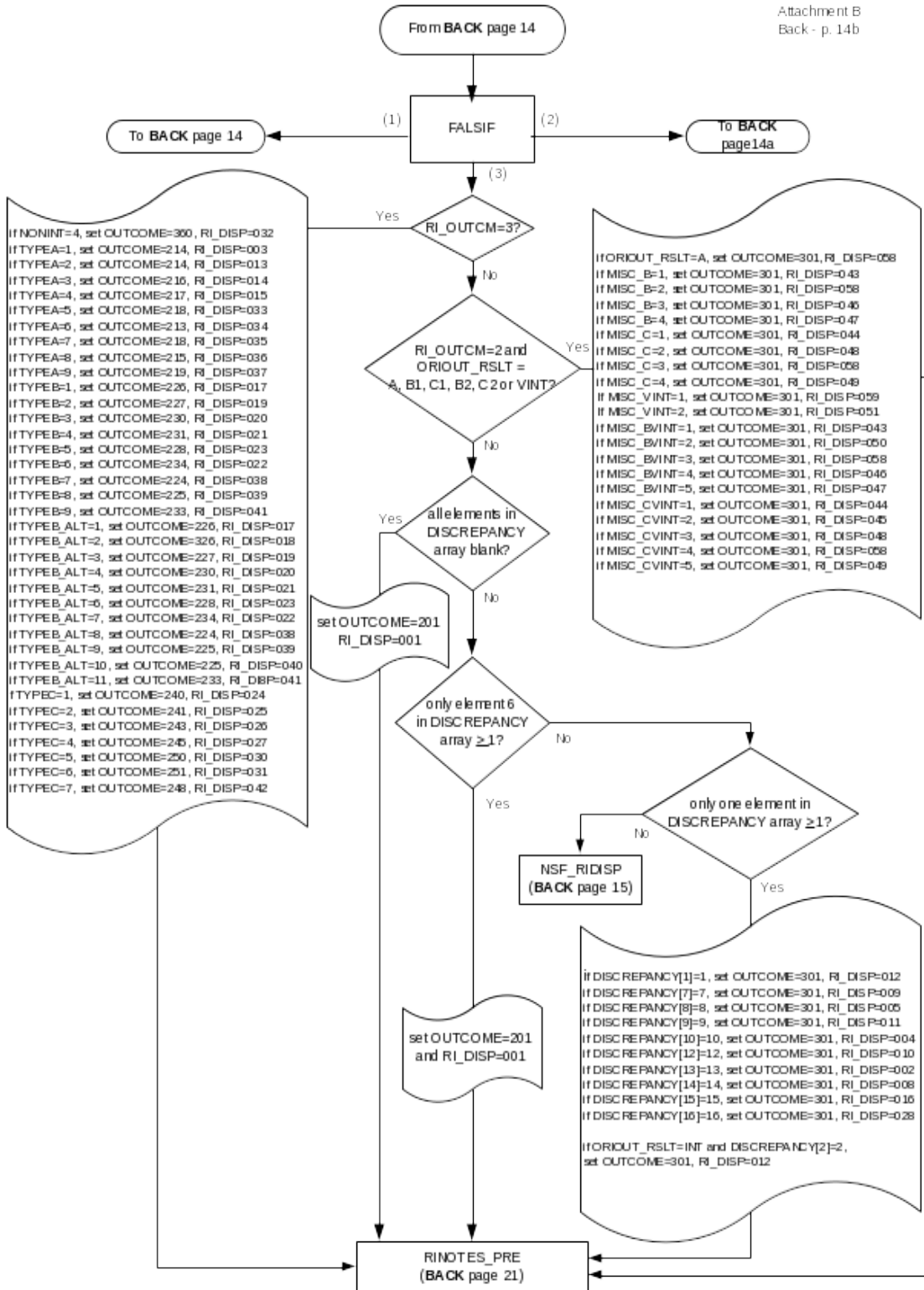


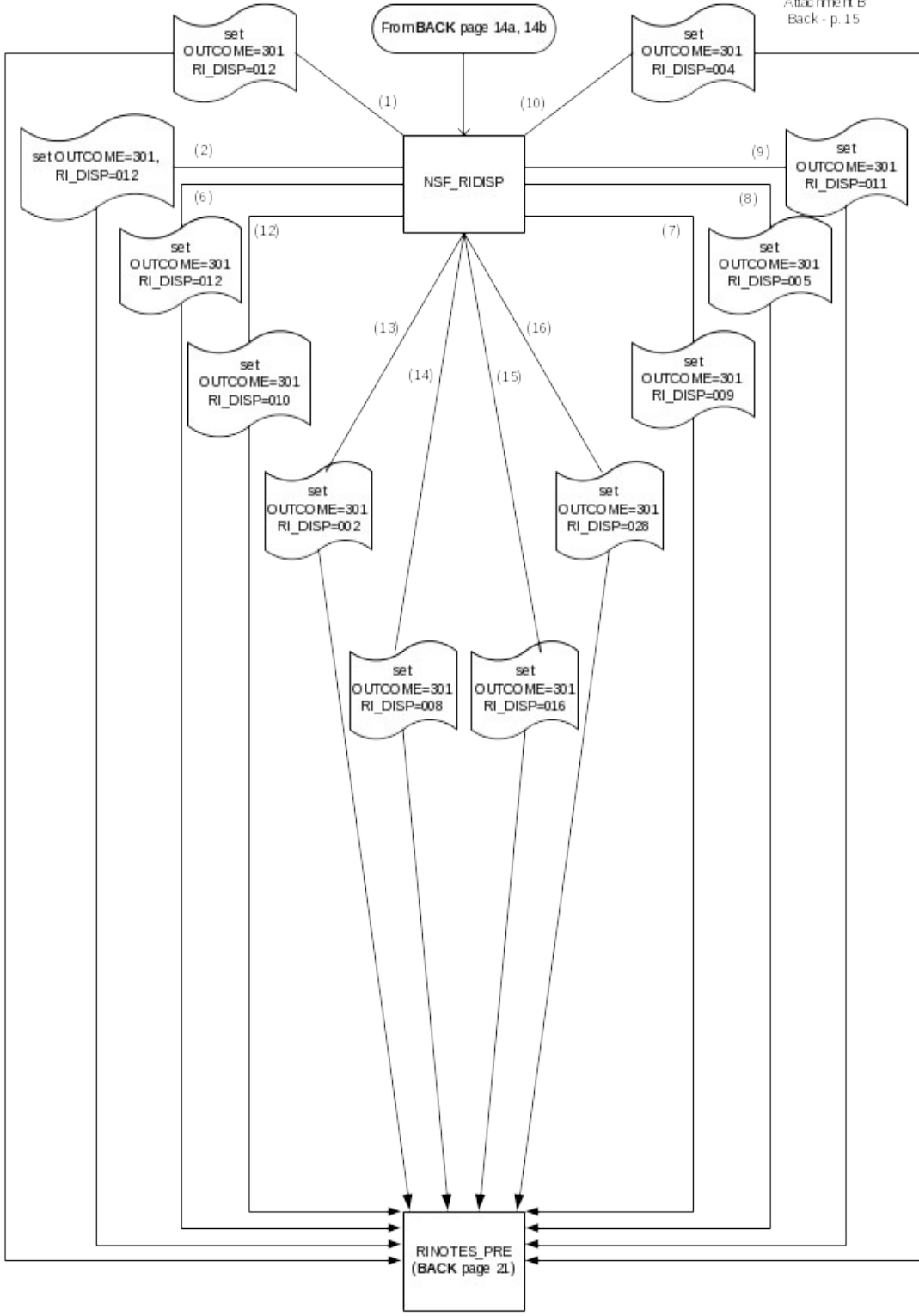
CED Reinterview Blaise Instrument Flowcharts -- Back

Attachment B
Back - p.14



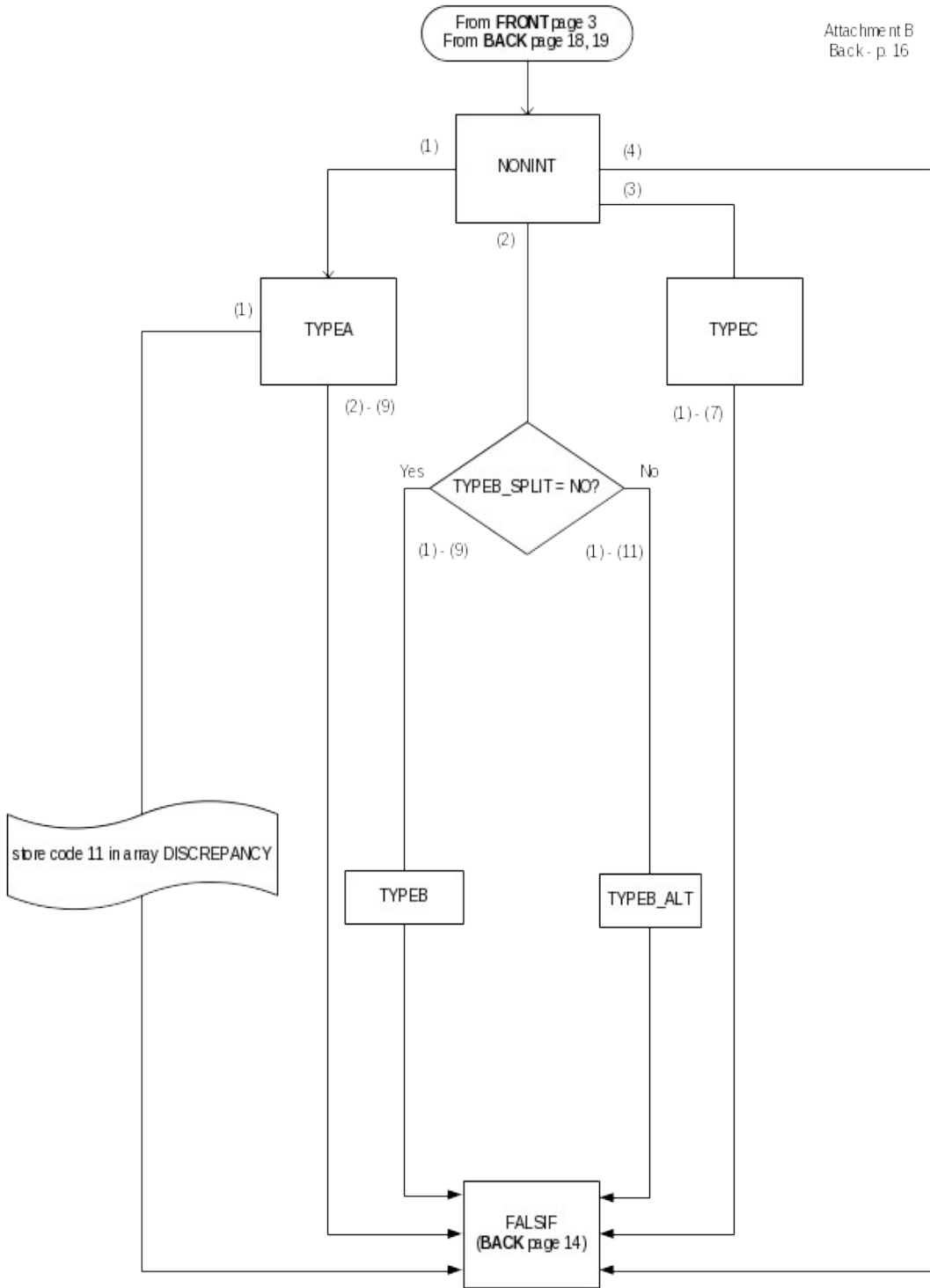


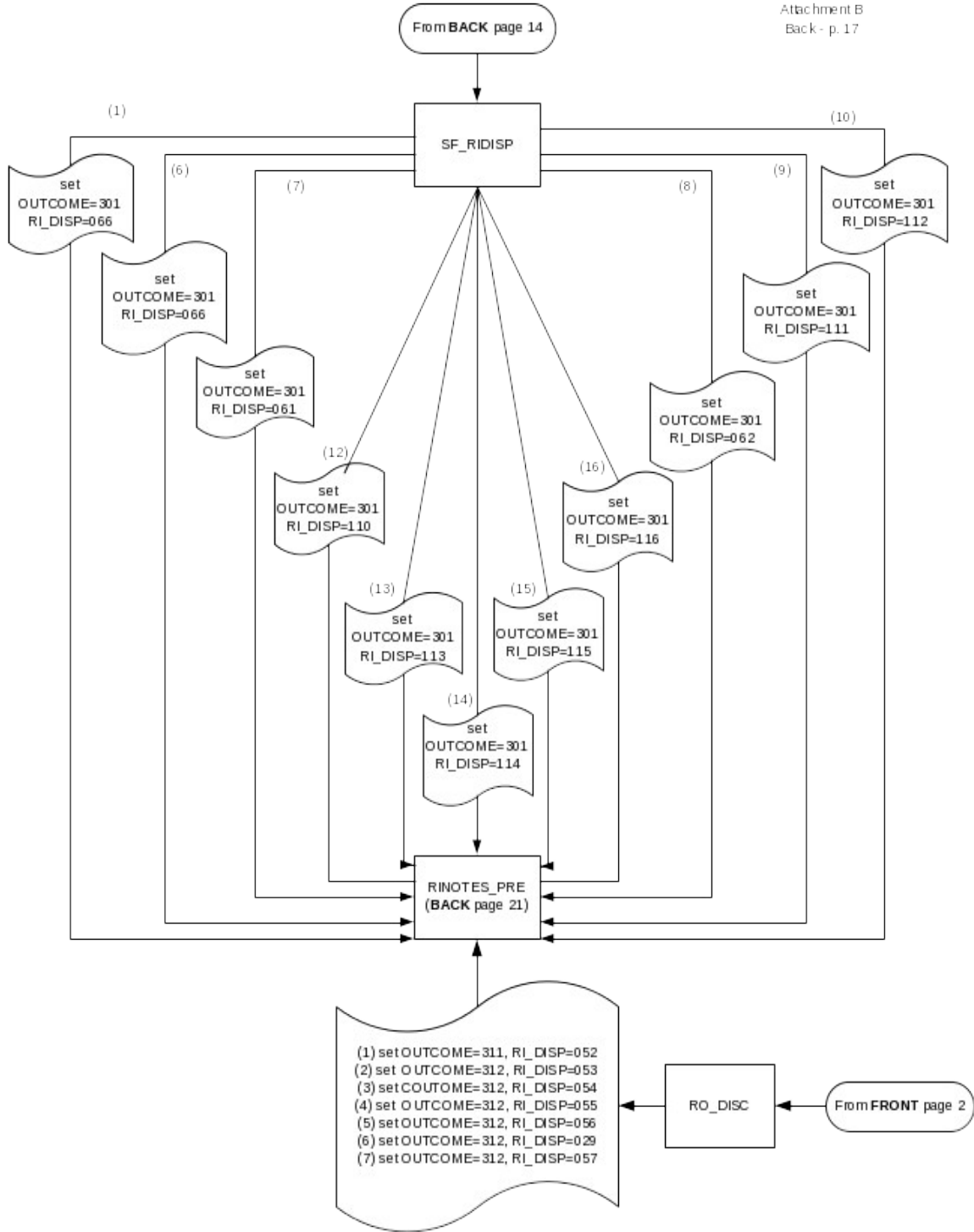




From FRONT page 3
From BACK page 18, 19

Attachment B
Back - p. 16





- (1) set OUTCOME=311, RI_DISP=052
- (2) set OUTCOME=312, RI_DISP=053
- (3) set OUTCOME=312, RI_DISP=054
- (4) set OUTCOME=312, RI_DISP=055
- (5) set OUTCOME=312, RI_DISP=056
- (6) set OUTCOME=312, RI_DISP=029
- (7) set OUTCOME=312, RI_DISP=057

