

# Vegetables

---

Released September 4, 2008, by the National Agricultural Statistics Service (NASS), Agricultural Statistics Board, U.S. Department of Agriculture. For information on *Vegetables* call Debbie Flippin at (202) 720-2157, office hours 8:00 a.m. to 4:30 p.m. ET.

## **Contracted Processing Production Down 2 Percent from Last Year Asparagus Production Down 15 Percent Spring Onion Production Up 8 Percent**

The 2008 contracted processing vegetable production for the four major processing crops (snap beans, sweet corn, green peas, and tomatoes) is forecast at 16.3 million tons, down 2 percent from last year. Production of processing tomatoes, at 12.1 million tons, is 3 percent below 2007. Snap bean production, at 769,760 tons, is up 2 percent from last year's production. Sweet corn production, at 2.99 million tons, is up 3 percent from last year, and green pea production, at 426,830 tons, is 2 percent below 2007. Contracted area for harvest of the four major processing vegetable crops, at 1.07 million acres, is 1 percent below 2007.

Production of the 2008 asparagus crop is forecast at 952,000 cwt, down 15 percent from 2007. Area harvested, at 32,200 acres, is down 16 percent from last year. Fresh production of 718,000 cwt, declined 22 percent from 2007. Processed production, at 11,700 tons, is up 18 percent from last year.

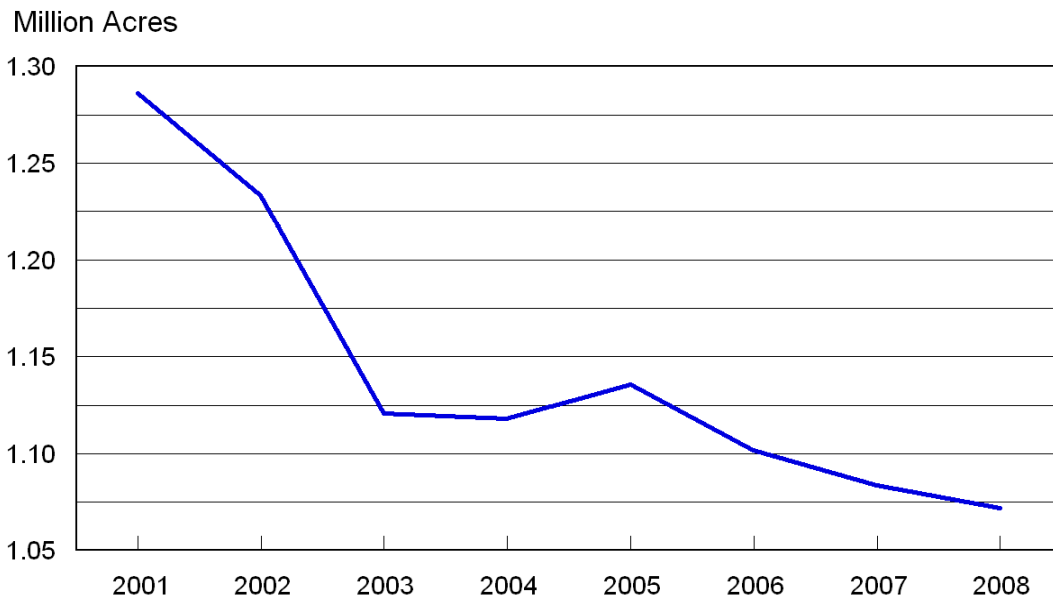
The end-of-season spring onion production estimate, at 11.0 million cwt, is up 8 percent from last year. Area harvested, at 29,000 acres, is down 6 percent from a year ago, while yield, at 379 cwt per acre, is up 49 cwt per acre from 2007. The value of the spring crop is estimated at 266 million dollars, 20 percent below last year.

## Table of Contents

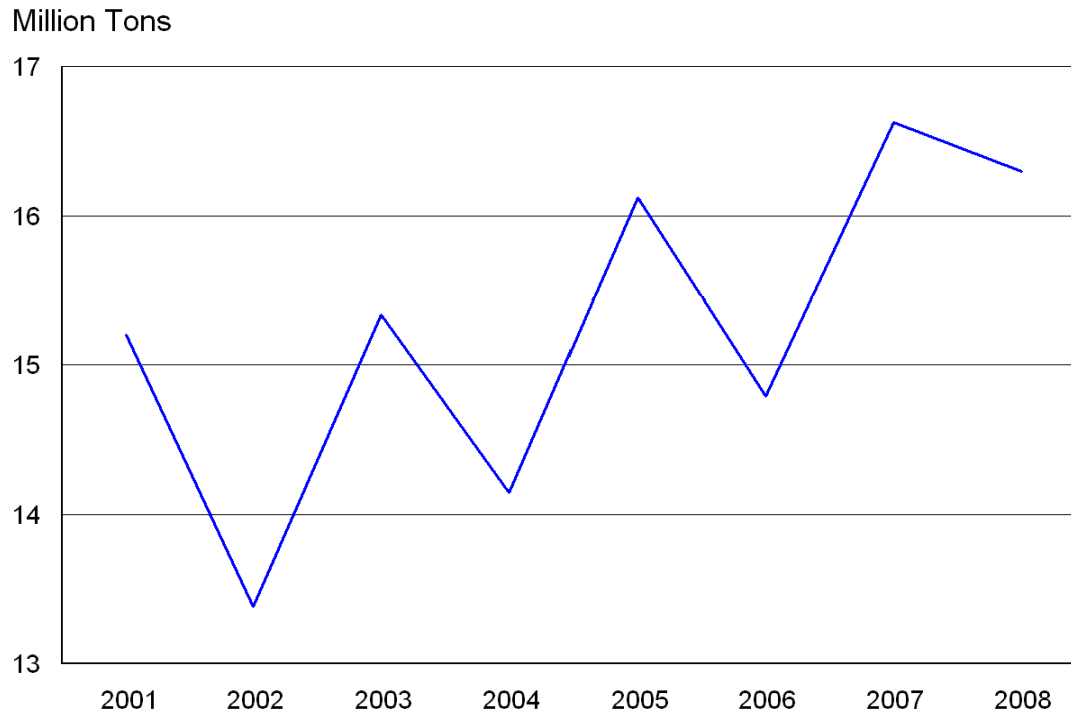
### Processing

	<b>Page</b>
By Crops	
Area and Production.....	4
Principal Vegetables by State	
Beans, Snap.....	6
Corn, Sweet.....	7
Tomatoes.....	8
Processing Crop Comments.....	9
Asparagus for Fresh Market and Processing.....	10
Crop Comments.....	12
Onions, Spring.....	13
Crop Comments.....	13

**4 Major Processed Vegetables: Contracted Area Harvested**  
**(Snap Beans, Sweet Corn, Green Peas, and Tomatoes)**  
 United States, 2001-2008



**4 Major Processed Vegetables: Contracted Production**  
**(Snap Beans, Sweet Corn, Green Peas, and Tomatoes)**  
 United States, 2001-2008



**Processing Vegetables: Area Harvested and Production  
by Crop, United States, 2006-2007 and Forecasted 2008  
(Domestic Units)**

Crop	Area Harvested			
	2006 Total	2007		2008 Contract <sup>1</sup>
		Total	Contract <sup>1</sup>	
	<i>Acres</i>	<i>Acres</i>	<i>Acres</i>	<i>Acres</i>
All Processing				
Snap Beans	203,240	202,570	197,900	186,750
Sweet Corn	384,700	367,600	367,600	379,500
Green Peas <sup>2</sup>	200,000	207,400	207,400	212,900
Tomatoes	299,400	313,600	310,600	292,900
Total	1,087,340	1,091,170	1,083,500	1,072,050
Cucumbers for Pickles <sup>3</sup>	103,000	95,500	83,100	
Total 5 Vegetables	1,190,340	1,186,670	1,166,600	
	Production			
	2006 Total	2007		2008 Contract <sup>1</sup>
		Total	Contract <sup>1</sup>	
	<i>Tons</i>	<i>Tons</i>	<i>Tons</i>	<i>Tons</i>
All Processing				
Snap Beans	785,950	767,770	751,090	769,760
Sweet Corn	3,085,550	2,897,430	2,897,430	2,987,960
Green Peas <sup>2</sup>	409,850	435,930	435,930	426,830
Tomatoes	10,611,820	12,659,890	12,542,890	12,113,160
Total	14,893,170	16,761,020	16,627,340	16,297,710
Cucumbers for Pickles <sup>3</sup>	505,190	507,560	451,460	
Total 5 Vegetables	15,398,360	17,268,580	17,078,800	

<sup>1</sup> Includes acreage from major brokers.

<sup>2</sup> Carried forward from earlier forecast.

<sup>3</sup> Cucumbers for pickles will be published in the *Vegetables 2008 Summary*, released January 2009.

**Processing Vegetables: Area Harvested and Production  
by Crop, United States, 2006-2007 and Forecasted 2008  
(Metric Units)**

Crop	Area Harvested			
	2006 Total	2007		2008 Contract <sup>1</sup>
		Total	Contract <sup>1</sup>	
	<i>Hectares</i>	<i>Hectares</i>	<i>Hectares</i>	<i>Hectares</i>
All Processing				
Snap Beans	82,250	81,980	80,090	75,580
Sweet Corn	155,680	148,760	148,760	153,580
Green Peas <sup>2</sup>	80,940	83,930	83,930	86,160
Tomatoes	121,160	126,910	125,700	118,530
Total <sup>3</sup>	440,040	441,590	438,480	433,850
Cucumbers for Pickles <sup>4</sup>	41,680	38,650	33,630	
Total 5 Vegetables <sup>3</sup>	481,720	480,230	472,110	
	Production			
	2006 Total	2007		2008 Contract <sup>1</sup>
		Total	Contract <sup>1</sup>	
	<i>Metric Tons</i>	<i>Metric Tons</i>	<i>Metric Tons</i>	<i>Metric Tons</i>
All Processing				
Snap Beans	713,000	696,510	681,370	698,310
Sweet Corn	2,799,150	2,628,490	2,628,490	2,710,620
Green Peas <sup>2</sup>	371,810	395,470	395,470	387,210
Tomatoes	9,626,830	11,484,800	11,378,660	10,988,820
Total <sup>3</sup>	13,510,790	15,205,260	15,083,990	14,784,960
Cucumbers for Pickles <sup>4</sup>	458,300	460,450	409,560	
Total 5 Vegetables <sup>3</sup>	13,969,080	15,665,710	15,493,550	

<sup>1</sup> Includes acreage from major brokers.

<sup>2</sup> Carried forward from earlier forecast.

<sup>3</sup> Totals may not add due to rounding.

<sup>4</sup> Cucumbers for pickles will be published in the *Vegetables 2008 Summary*, released January 2009.

**Snap Beans for Processing: Area Harvested, Yield, and Production  
by State and United States, 2006-2007 and Forecasted 2008**

State	Area Harvested						
	2006 Total	2007					2008 Contract <sup>1</sup>
		Total	Contract <sup>1</sup>				
	<i>Acres</i>	<i>Acres</i>	<i>Acres</i>	<i>Acres</i>	<i>Acres</i>	<i>Acres</i>	<i>Acres</i>
FL <sup>2</sup>	3,300						
IL	14,800	12,300		11,600			14,100
IN	5,300	5,000		5,000			6,700
MI	18,100	22,800		22,800			12,700
MN <sup>2</sup>							4,600
NY <sup>2</sup>	19,900						
OR	18,800	19,100		19,100			17,500
PA	10,800	10,800		9,700			10,800
WI	70,900	69,900		68,600			73,300
Oth Sts <sup>3,4</sup>	41,340	62,670		61,100			47,050
US	203,240	202,570		197,900			186,750
	Yield per Acre			Production			
	2006 Total	2007 Total	2008 Contract <sup>1</sup>	2006 Total	2007		2008 Contract <sup>1</sup>
					Total	Contract <sup>1</sup>	
	<i>Tons</i>	<i>Tons</i>	<i>Tons</i>	<i>Tons</i>	<i>Tons</i>	<i>Tons</i>	<i>Tons</i>
FL <sup>2</sup>	3.47			11,460			
IL	3.82	4.65	4.14	56,580	57,140	53,430	58,370
IN	3.18	3.15	2.28	16,860	15,770	15,770	15,280
MI	3.65	3.45	4.25	66,030	78,620	78,620	53,980
MN <sup>2</sup>			3.55				16,330
NY <sup>2</sup>	3.71			73,730			
OR	4.95	6.02	6.40	92,970	115,010	115,010	112,000
PA	3.01	3.07	3.60	32,480	33,170	29,600	38,880
WI	4.19	3.79	4.00	297,030	264,910	259,810	293,200
Oth Sts <sup>3,4</sup>	3.36	3.24	3.86	138,810	203,150	198,850	181,720
US	3.87	3.79	4.12	785,950	767,770	751,090	769,760

<sup>1</sup> Includes acreage from major brokers.

<sup>2</sup> Estimates not published to avoid disclosure of individual operations.

<sup>3</sup> 2006 - CA, DE, GA, MD, MN, NJ, NC, TX, and VA.

2007 - CA, DE, FL, GA, MD, MN, NJ, NY, NC, TX, and VA.

2008 - CA, DE, FL, GA, MD, NJ, NY, NC, TX, and VA.

<sup>4</sup> Seasonal forecasts for AR and MO are not available. Estimates to be published in the *Vegetables 2008 Summary*, released January 2009.

**Sweet Corn for Processing: Area Harvested, Yield, and Production  
by State and United States, 2006-2007 and Forecasted 2008**

State	Area Harvested						
	2006 Total		2007				2008 Contract <sup>1</sup>
			Total	Contract <sup>1</sup>			
	<i>Acres</i>		<i>Acres</i>		<i>Acres</i>		<i>Acres</i>
DE <sup>2</sup>	4,600						
MD	6,300		6,300	6,300		6,400	
MN	131,600		120,500	120,500		121,800	
NY <sup>2</sup>	17,200						
OR	26,000		21,900	21,900		20,500	
WA	79,200		82,500	82,500		82,200	
WI	82,800		83,000	83,000		91,300	
Oth Sts <sup>3</sup>	37,000		53,400	53,400		57,300	
US	384,700		367,600	367,600		379,500	
	Yield per Acre			Production			
	2006 Total	2007 Total	2008 Contract <sup>1</sup>	2006 Total	2007		2008 Contract <sup>1</sup>
					Total	Contract <sup>1</sup>	
	<i>Tons</i>	<i>Tons</i>	<i>Tons</i>	<i>Tons</i>	<i>Tons</i>	<i>Tons</i>	<i>Tons</i>
DE <sup>2</sup>	5.30			24,380			
MD	5.60	8.40	6.50	35,280	52,920	52,920	41,600
MN	7.33	6.60	6.90	964,710	794,850	794,850	840,420
NY <sup>2</sup>	6.70			115,240			
OR	9.58	9.69	9.90	249,160	212,240	212,240	202,950
WA	10.18	10.36	10.20	806,140	854,310	854,310	838,440
WI	7.38	6.97	7.10	611,260	578,720	578,720	648,230
Oth Sts <sup>3</sup>	7.55	7.57	7.27	279,380	404,390	404,390	416,320
US	8.02	7.88	7.87	3,085,550	2,897,430	2,897,430	2,987,960

<sup>1</sup> Includes acreage from major brokers.

<sup>2</sup> Estimates not published to avoid disclosure of individual operations.

<sup>3</sup> 2006 - ID, IL, IA, NJ, TN, and VA.

2007 - DE, ID, IL, IA, NJ, NY, PA, TN, and VA.

2008 - DE, ID, IL, IA, NJ, NY, PA, TN, and VA.

**Tomatoes for Processing: Area Harvested, Yield, and Production  
by State and United States, 2006-2007 and Forecasted 2008**

State	Area Harvested						
	2006 Total	2007				2008 Contract <sup>1</sup>	
		Total	Contract <sup>1</sup>				
	<i>Acres</i>	<i>Acres</i>	<i>Acres</i>	<i>Acres</i>	<i>Acres</i>	<i>Acres</i>	
CA	282,000	296,000	293,000			276,000	
IN	7,800	8,400	8,400			7,800	
MI	3,300	3,300	3,300			2,600	
OH	6,300	5,900	5,900			6,500	
US	299,400	313,600	310,600			292,900	
	Yield per Acre			Production			
	2006 Total	2007 Total	2008 Contract <sup>1</sup>	2006 Total	2007		2008 Contract <sup>1</sup>
	<i>Tons</i>	<i>Tons</i>	<i>Tons</i>	<i>Tons</i>	Total	Contract <sup>1</sup>	<i>Tons</i>
CA	35.83	40.82	42.03	10,104,000	12,082,000	11,965,000	11,600,000
IN	28.91	35.00	30.29	225,500	294,000	294,000	236,260
MI	35.00	34.00	34.00	115,500	112,200	112,200	88,400
OH	26.48	29.10	29.00	166,820	171,690	171,690	188,500
US	35.44	40.37	41.36	10,611,820	12,659,890	12,542,890	12,113,160

<sup>1</sup> Includes acreage from major brokers.



**Snap Beans:** Contracted production of snap beans is forecast at 769,760 tons, up 2 percent from last year. Contracted harvested area is down 6 percent, but yield is up 0.33 tons per acre. In Oregon, harvest was delayed due to cool and wet conditions. Cool temperatures in April and May hindered crop development. The snap bean crop is reported to be in fair to good condition with no disease or insect problems reported. In Michigan, cool, soil temperatures hampered early planted snap beans. However, later plantings emerged in good condition by mid-June. The crop was in full swing by the end of June. Early crop harvest began in mid-July under normal conditions in most areas of the State. Minimal rainfall during August led to many fields being irrigated. In Illinois, planting was delayed due to limited rainfall across the State. In Indiana, the snap bean crop is reported to be in fair to good condition. In Minnesota, field preparation was delayed due to cold and wet conditions in early April.

**Sweet Corn:** Contracted sweet corn production is forecast at 2.99 million tons, up 3 percent from last year. An increase of 3 percent in contracted harvested area is accompanied by a decline in yield of 0.01 ton per acre from 2007. In Minnesota, cold and wet conditions delayed field work in early April. Harvest was 22 percent complete as of August 15. In Washington, conditions have been mostly hot and dry throughout the summer. Water supplies are adequate and the crop is reported to be mostly average to above average. Oregon's harvest was delayed due to unseasonably cool and wet conditions during the growing season. In Maryland, harvest of the sweet corn crop was 71 percent complete as of August 18.

**Tomatoes:** Contracted tomato production is forecast at 12.1 million tons, down 3 percent from last year. A decline of 6 percent in contracted harvested area is accompanied by a yield increase of 0.99 tons per acre. In California, the processed tomato crop was slightly behind schedule. A frost in mid-April caused spotty damage to the crop in some areas of the State. Dry conditions and high winds during spring hampered fruit setting and harvest. However, the condition of the crop is reported to be excellent with no significant insect problems. In Ohio, harvest was 6 percent complete by August 17. Michigan growers began transplanting throughout May. Early planted tomatoes progressed well by the end of May despite dry soil. Stakes were put in fields during the first week of June. Planting was near complete by mid-June. Ample moisture in July caused a setback to plants in some fields. Harvest began in mid-August and the crop progressed well throughout the growing season. Indiana's processing tomatoes were in fair to good condition despite dry weather during late July into mid-August. Some processors had to irrigate to make up for the lack of rainfall.

**Asparagus for Fresh Market and Processing: Area Planted and Harvested,  
Yield, Production, and Value by State and United States, 2006-2008**

State	Area Planted			Area Harvested		
	2006	2007	2008	2006	2007	2008
	<i>Acres</i>	<i>Acres</i>	<i>Acres</i>	<i>Acres</i>	<i>Acres</i>	<i>Acres</i>
CA	23,500	20,800	15,000	22,500	20,000	14,500
MI	12,200	11,700	11,700	11,700	11,200	11,200
WA	9,000	8,000	7,000	9,000	7,000	6,500
US	44,700	40,500	33,700	43,200	38,200	32,200
	Yield per Acre			Production		
	2006	2007	2008	2006	2007	2008
	<i>Cwt</i>	<i>Cwt</i>	<i>Cwt</i>	<i>1,000 Cwt</i>	<i>1,000 Cwt</i>	<i>1,000 Cwt</i>
CA	23	29	29	518	580	421
MI	22	21	23	257	235	258
WA	42	43	42	378	301	273
US	27	29	30	1,153	1,116	952
	Value					
	Per Cwt			Total		
	2006	2007	2008	2006	2007	2008
	<i>Dollars</i>	<i>Dollars</i>	<i>Dollars</i>	<i>1,000 Dollars</i>	<i>1,000 Dollars</i>	<i>1,000 Dollars</i>
CA	118.00	121.00	103.00	61,124	70,180	43,363
MI	57.80	65.60	71.80	14,866	15,417	18,516
WA	50.00	59.10	65.40	18,911	17,802	17,859
US	82.30	92.70	83.80	94,901	103,399	79,738

**Asparagus for Fresh Market and Processing: Production and Value  
by Utilization, State, and United States, 2006-2008**

Utilization and State	Production					
	2006		2007		2008	
	<i>1,000 Cwt</i>		<i>1,000 Cwt</i>		<i>1,000 Cwt</i>	
Fresh Market						
CA <sup>1</sup>		518		580		421
MI <sup>2</sup>		31				
WA <sup>2</sup>		362				
Oth Sts <sup>3</sup>				338		297
US		911		918		718
	<i>Tons</i>		<i>Tons</i>		<i>Tons</i>	
Processing						
MI <sup>2</sup>		11,300				
WA <sup>2</sup>		800				
Oth Sts <sup>3</sup>				9,900		11,700
US		12,100		9,900		11,700
Canning		8,000		5,900		7,100
Freezing		4,100		4,000		4,600
	Value					
	Per Unit			Total		
	2006	2007	2008	2006	2007	2008
	<i>Dollars per Cwt</i>	<i>Dollars per Cwt</i>	<i>Dollars per Cwt</i>	<i>1,000 Dollars</i>	<i>1,000 Dollars</i>	<i>1,000 Dollars</i>
Fresh Market						
CA <sup>1</sup>	118.00	121.00	103.00	61,124	70,180	43,363
MI <sup>2</sup>	64.00			1,984		
WA <sup>2</sup>	49.50			17,919		
Oth Sts <sup>3</sup>		61.50	68.90		20,787	20,463
US	88.90	99.10	88.90	81,027	90,967	63,826
	<i>Dollars per Ton</i>	<i>Dollars per Ton</i>	<i>Dollars per Ton</i>	<i>1,000 Dollars</i>	<i>1,000 Dollars</i>	<i>1,000 Dollars</i>
Processing						
MI <sup>2</sup>	1,140.00			12,882		
WA <sup>2</sup>	1,240.00			992		
Oth Sts <sup>3</sup>		1,260.00	1,360.00		12,432	15,912
US	1,150.00	1,260.00	1,360.00	13,874	12,432	15,912
Canning	1,150.00	1,250.00	1,360.00	9,200	7,392	9,656
Freezing	1,140.00	1,260.00	1,360.00	4,674	5,040	6,256

<sup>1</sup> Includes a small amount of processing asparagus.

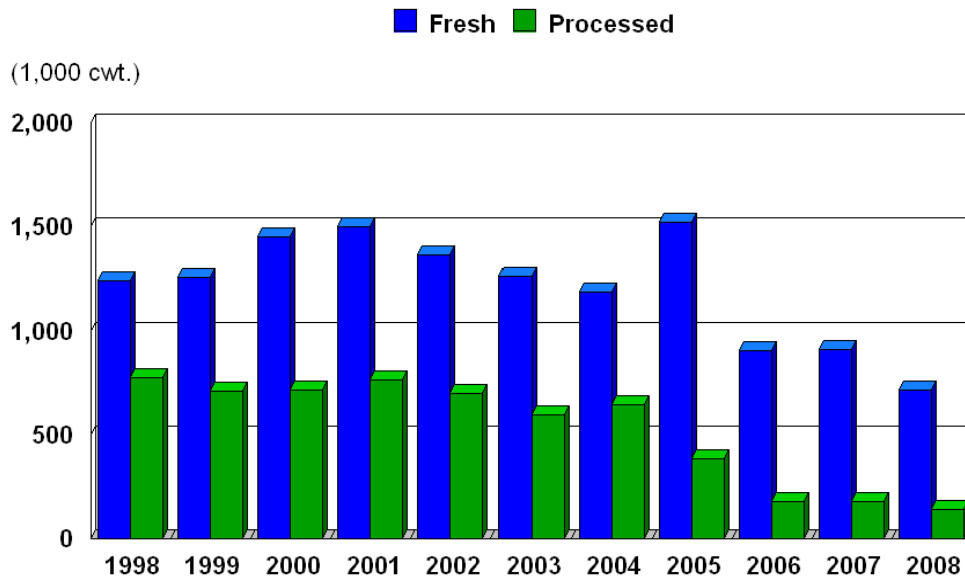
<sup>2</sup> Estimates not published to avoid disclosure of individual operations.

<sup>3</sup> MI and WA.

**Asparagus:** Production from the 2008 asparagus crop is forecast at 952,000 cwt, down 15 percent from last year. Harvested area, at 32,200 acres, is down 16 percent from 2007. Fresh production of 718,000 cwt, is down 22 percent from a year ago. Processed production, at 11,700 tons, is up 18 percent from 2007. Asparagus for canning, at 7,100 tons, is up 20 percent from last year. Frozen asparagus production of 4,600 tons, is up 15 percent from 2007. Total value of the crop, at 79.7 million dollars, is down 23 percent from 2007. In California, a mostly excellent quality crop was reported throughout the growing season, however, acreage continues to decline due to competition from imports. In Michigan, the asparagus spears emerged in late April. Warm temperatures allowed crop development to proceed ahead of schedule. Harvest began in early May and continued at a slow pace for the remainder of the month due to weather conditions. Purple spots were reported in some fields. Harvest was complete in some areas by mid-June.

## Asparagus: Production

### United States, 1998-2008



**Onions: Area Planted and Harvested, Yield, Production,  
and Value, Selected States, 2007-2008**

Crop and State	Area				Yield per Acre	
	Planted		Harvested		2007	2008
	2007	2008	2007	2008		
	<i>Acres</i>	<i>Acres</i>	<i>Acres</i>	<i>Acres</i>	<i>Cwt</i>	<i>Cwt</i>
Spring <sup>1</sup>						
AZ	1,200	1,500	1,200	1,500	450	440
CA	7,600	6,700	7,400	6,500	450	440
GA	12,500	12,000	12,000	11,500	270	320
TX	12,500	11,000	10,400	9,500	300	400
Total	33,800	31,200	31,000	29,000	330	379
	Production		Value			
	2007	2008	Per Cwt		Total	
			2007	2008	2007	2008
	<i>1,000 Cwt</i>	<i>1,000 Cwt</i>	<i>Dollars</i>	<i>Dollars</i>	<i>1,000 Dollars</i>	<i>1,000 Dollars</i>
Spring <sup>1</sup>						
AZ	540	660	12.00	8.30	6,480	5,478
CA	3,330	2,860	11.00	12.80	36,630	36,608
GA	3,240	3,680	35.90	29.50	116,316	108,560
TX	3,120	3,800	56.00	30.30	174,720	115,140
Total	10,230	11,000	32.70	24.20	334,146	265,786

<sup>1</sup> Primarily fresh market.

**Spring Onions:** The end-of-season spring onion production estimate, at 11.0 million cwt, is up 8 percent from last year. Area harvested, at 29,000 acres, is down 6 percent from a year ago, while yield, at 379 cwt per acre, is up 49 cwt per acre from 2007. The value of the spring crop is estimated at 266 million dollars, 20 percent less than last year. In Georgia, rainfall during the winter months was normal to slightly below normal, while rainfall during spring was well below normal. Temperatures were above normal during the winter and near normal during spring. The State experienced drought conditions during most of the summer. However, rainfall in the southern part of the State improved moisture conditions. Harvest got underway by the first week in April, and the crop was rated good to excellent condition throughout the growing season. Yields are reported to be the highest on record. Disease problems have been at a minimum and growers were actively irrigating the spring onion crop. Planting of spring onions in California began in most areas by early November under good conditions. A cool growing season slowed crop growth, and some growers experienced problems with seeders and mildew. However, good quality was reported of the spring onions crop.

## ACCESS TO REPORTS!!

---

For your convenience, there are several ways to obtain NASS reports, data products, and services:

### INTERNET ACCESS

All NASS reports are available free of charge on the worldwide Internet. For access, connect to the Internet and go to the NASS Home Page at: [www.nass.usda.gov](http://www.nass.usda.gov).

### E-MAIL SUBSCRIPTION

All NASS reports are available by subscription free of charge direct to your e-mail address. Starting with the NASS Home Page at [www.nass.usda.gov](http://www.nass.usda.gov), under the right navigation, *Receive reports by Email*, click on **National** or **State**. Follow the instructions on the screen.

-----

### PRINTED REPORTS OR DATA PRODUCTS

**CALL OUR TOLL-FREE ORDER DESK: 800-999-6779 (U.S. and Canada)**  
**Other areas, please call 703-605-6220      FAX: 703-605-6900**  
**(Visa, MasterCard, check, or money order acceptable for payment.)**

-----

### ASSISTANCE

For **assistance** with general agricultural statistics or further information about NASS or its products or services, contact the **Agricultural Statistics Hotline** at **800-727-9540**, 7:30 a.m. to 4:00 p.m. ET, or e-mail: [nass@nass.usda.gov](mailto:nass@nass.usda.gov).

The U.S. Department of Agriculture (USDA) prohibits discrimination in all its programs and activities on the basis of race, color, national origin, age, disability, and where applicable, sex, marital status, familial status, parental status, religion, sexual orientation, genetic information, political beliefs, reprisal, or because all or a part of an individual's income is derived from any public assistance program. (Not all prohibited bases apply to all programs.) Persons with disabilities who require alternative means for communication of program information (Braille, large print, audiotape, etc.) should contact USDA's TARGET Center at (202) 720-2600 (voice and TDD).

To file a complaint of discrimination, write to USDA, Director, Office of Civil Rights, 1400 Independence Avenue, S.W., Washington, D.C. 20250-9410, or call (800) 795-3272 (voice) or (202) 720-6382 (TDD). USDA is an equal opportunity provider and employer.

# **USDA Data Users' Meeting**

**October 20, 2008**

**Doubletree Hotel Chicago O'Hare Airport-Rosemont**

**Rosemont, Illinois**

**(847) 292-9100**

The USDA's National Agricultural Statistics Service will be organizing an open forum for data users. The purpose will be to provide updates on pending changes in the various statistical and information programs and seek comments and input from data users. Other USDA agencies to be represented will include the Agricultural Marketing Service, the Economic Research Service, the Foreign Agricultural Service, and World Agricultural Outlook Board. The Foreign Trade Division from the Census Bureau will also be included in the meeting.

For registration details or additional information for the Data Users' Meeting, see the NASS homepage at [www.nass.usda.gov/forum/](http://www.nass.usda.gov/forum/) or contact Marjorie Taylor (NASS) at (202) 690-8141 or at [marjorie\\_taylor@nass.usda.gov](mailto:marjorie_taylor@nass.usda.gov).

This Data Users' Meeting precedes an Industry Outlook meeting that will be held at the same location on October 21, 2008. The Outlook meeting brings together analysts from various commodity sectors to discuss the outlook situation. For registration details or additional information for the Industry Outlook Meeting see the Livestock and Marketing Information Center (LMIC) homepage at [www.lmic.info](http://www.lmic.info) or contact Jim Robb at (720) 544-2941 or at [robb@lmic.info](mailto:robb@lmic.info).