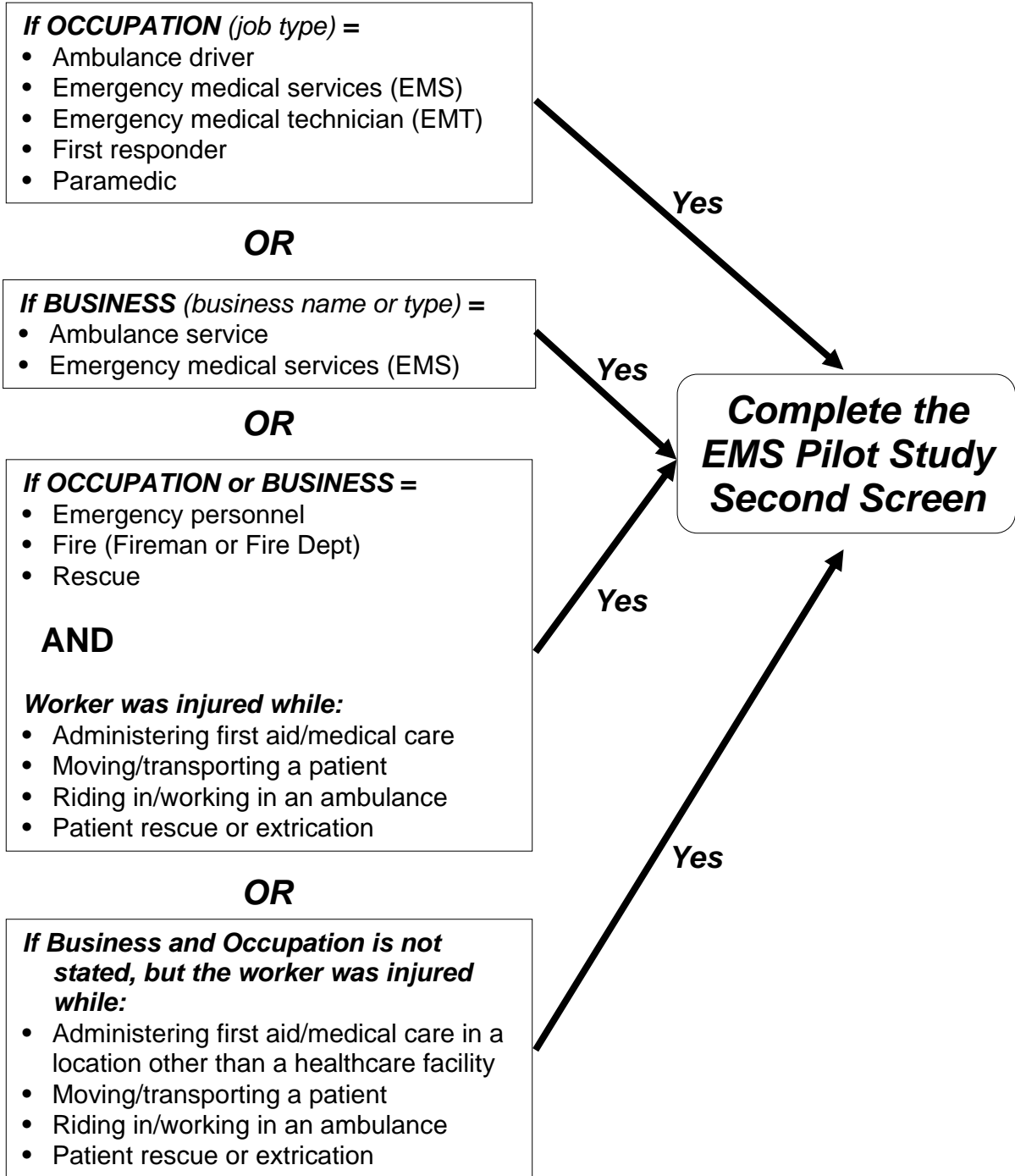


APPENDIX C

## EMS Pilot Study—Case Identification



**GOAL: Capture all Emergency Medical Service providers. EMS functions include:**

- Provision of first aid/medical care
- Patient transport
- Non-emergency activities conducted at EMS or fire/EMS base/station (including training and physical fitness activities)
- Patient rescue or extrication
- Riding in/working in an ambulance