

How to Collect Cheek Cell Samples

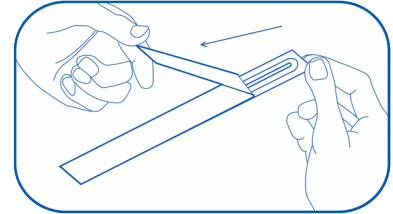
Thank you for agreeing to provide cheek cell samples. To collect the samples, we have included:

- Consent forms
- Cheek cell brushes inside colored envelopes (Two brushes inside each colored envelope. One colored envelope per person.)
- Postage-paid mailing envelope

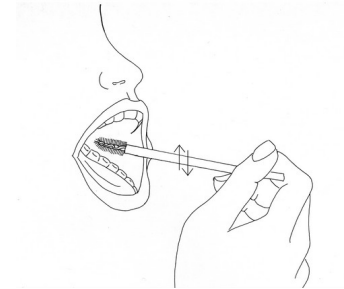
Please read the following directions before you start collecting the cheek cell samples.

☐ Read and sign the enclosed consent forms.

☐ Starting with the red envelope labeled MOTHER, take out one cheek cell brush wrapper. Peel the white part of the wrapper down to where you see 3 stars (***) . Take the brush out of the wrapper. Be sure **NOT** to touch the brush end. Keep the wrapper; you will need it in step 4.

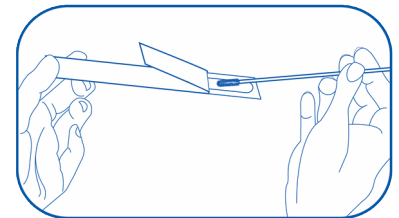


☐ Place the brush inside your mouth, against the inside of your cheek. Rub the brush **firmly** up and down along the inside of your cheek **10 times**. Roll the brush on its other side and rub **firmly** up and down **10 more times** in the same area inside your cheek.



☐ Put it back into the wrapper with the brush end first. Do not re-use this brush on another person.

☐ Take out the second wrapper from the envelope labeled MOTHER. Repeat steps 2-4 with the second wrapper and brush. This time, use the brush on your other cheek.



☐ Once you have put the brush back into its wrapper, put both wrappers back into the red envelope labeled MOTHER. Close the envelope with the clear seal. Write the **date** the samples were collected on the envelope.

☐ After collecting your cheek cell samples, follow steps 2-6 to collect cheek cell samples from the other identified family members.

☐ Place all colored envelopes and **signed** consent forms into the big, postage-paid mailing envelope. Securely seal the envelope and return it to us by U.S. mail.

If you have any questions or problems, please call _____ at _____.

Thank you!