

May 12, 2006

MEMORANDUM FOR Barbara M. LoPresti
Chief, Technologies Management Office

From: Alan R. Tupek
Chief, Demographic Statistical Methods Division

Subject: Consumer Expenditure Quarterly (CEQ) Survey
Reinterview - Specifications for the Computer Assisted Personal
Interview (CAPI) Quality Control (QC) Reinterview Blaise
Instrument - 2007 Revisions

I. Purpose

This memorandum documents final specifications for the CAPI QC reinterview instrument for the CEQ Survey 2007 Reinterview. Data collection will begin in April 2007. These specifications are for a Blaise instrument. Use these specifications in conjunction with the memorandum, Specifications for a Generic Computer Assisted Personal Interview (CAPI) Quality Control (QC) Reinterview Blaise Instrument.

II. Quality Control Reinterview

CAPI original interviews and Type B and C noninterviews are eligible for a QC reinterview. The goal of the QC reinterview is to detect falsification by the field representatives or supervisory field representatives ((S)FRs). The reinterview instrument includes paths for telephone reinterviews and personal visit reinterviews.

III. Instrument Specifications

We have broken down our specifications for the generic QC reinterview instrument into three major parts. The front specifications, Section XIII, include the screens that direct the reinterviewer to make contact, introduce himself/herself, and ask for the respondent. The middle specifications, Section XIV, include the roster verification screens and the survey specific questions used to determine whether falsification occurred. The back specifications, Section XV, include the thank you screens and the screens that set up callbacks, assign reinterview dispositions, and wrap up the case.

This memorandum includes in Sections XIII-XV only those screens that are new or have changes to the generic specifications. For your convenience, we identify changes on the generic screens by highlighting any additions and striking out any deletions. Since these specifications are also very similar to those previously issued for the 2000 Sample Redesign, we identify the 2007 revisions (additions and deletions) to the 2000 Sample Redesign reinterview specifications by placing those highlights and strikeouts within braces {}.

As in the generic specifications, we divide the display of each screen's info pane into the text section and the answer list section. Any text given in italics in the text section denotes read only information that is not said aloud by the reinterviewer. Display this text in regular font and in blue on the screen.

Attachment A, Reinterview Instrument Screen Index, lists the page number(s) of each screen displayed in these specifications. Attachment B, CEQ Reinterview Blaise Instrument Flowcharts, displays the pathing of the screens in the front, middle and back portions of the instrument. Attachment C, CEQ Reinterview Instrument Flowchart Index, offers an index of the screens in the flowcharts.

IV. Record-Typed Reinterview Input File

Attachment D contains the format of the Reinterview Sample Control Input File (SCIF) for the CEQ Survey 2007 Reinterview. This Reinterview SCIF lists all of the variables by record type that are on the reinterview input file. The original instrument needs to set or initialize these variables, except for the few that are set by the Demographic Statistical Methods Division (DSMD) reinterview system. DSMD's reinterview system creates the reinterview input files.

Refer to the CEQ Reinterview SCIF in Attachment D for information regarding the description, length, and values of each of the variables required for reinterview. Record Type 8500 in Attachment D shows generic household level variables in positions 1-83 and generic person level variables in position 1-90. CEQ Survey specific household and person level variables follow these positions, respectively.

The following is a list of only those reinterview input file variables utilized in the CEQ 2007 reinterview instrument. These variables are used either to "fill" entries on the screen or to control pathing. The original instrument must set and output these variables, except for SURVEY_SET, which is set by DSMD. Some of these variables are used in the generic portions of the reinterview instrument. If the CEQ Survey uses a different name for any of these generic variables, the CEQ name is noted in the 'Description' column. Convert the variable's CEQ name to its generic name in the manipula script when extracting the original output for reinterview.

Name	Description	Record Type
RESPNAME	Respondent name	1002
AREA	Respondent's phone number area code	1002
PREFIX	Respondent's phone number prefix	1002
SUFFIX	Respondent's phone number suffix	1002
EXTN	Respondent's phone extension	1002
HNO	Address - house number	2006
HNOSUF	Address - house number suffix	2006
STRNAME	Address - street name combined	2006
UNITDES	Address - unit designation	2006
GQUNITINFO	Address - GQ unit designation	2006
NONCITYADD	Address - non-city style address	2006
PHYSDES	Address - physical description	2006
PO	Address - locality	2006
ST	Address - state abbreviation	2006
ZIP5	Address - ZIP code	2006
ZIP4	Address - ZIP4	2006
BLDGNAME	Address - building name	2006
INTNMBR	Interview number	2552
ORIOUT	Original outcome code - See Attachment E for values * OUTCOME in CEQ original instrument - Convert OUTCOME to ORIOUT in manipula script	2552
ORIFR	Original FR code of (S)FR who completed the case * INTID in CEQ original instrument - Convert OUTCOME to ORIOUT in manipula script	2552
CP1NAME ¹	Contact person 1's name	8001
CP1TITL ¹	Contact person 1's title	8001

Name	Description	Record Type
CP1PHON ¹	Contact person 1's phone number	8001
CP1EXT ¹	Contact person 1's phone extension	8001
CP1PHT ¹	Type of phone for contact person	8001
CP1ADD1 ¹	Contact person 1's address 1	8001
CP1ADD2 ¹	Contact person 1's address 2	8001
CP1PO ¹	Contact person 1's address - PO/city	8001
CP1ST ¹	Contact person 1's address - state	8001
CP1ZP5 ¹	Contact person 1's address - ZIP code	8001
CP1ZP4 ¹	Contact person 1's address - ZIP4	8001
BESTTIME	Best time to call	8200
BESTTIM2	Best time other	8200
NOSUNDAY	Do not call on Sunday	8200
PHTYP	Type of phone for respondent or household	8200
SPHONE	Second phone number of respondent or household	8200
SPHEXT	Second phone number's extension	8200
SPHTYP	Type of phone for second phone number	8200
BYOBS ¹	Original case classified as a noninterview by: 1 = Observation only 2 = Information provided by contact person 0 or empty = Question not asked for an interview or Type A case	8500 (HH level)
INTDATE	Original interview date	8500 (HH level)
TYPEA_SP	Other Type A noninterview - write-in * TYPEASP in CEQ original instrument - Convert TYPEASP to TYPEA_SP in manipula script	8500 (HH level)
TYPEB_SP	Other Type B noninterview - write-in	8500 (HH level)
TYPEC_SP	Other Type C noninterview - write-in	8500 (HH level)
NUMHOUSE	Number of persons in primary CU	8500 (HH level)

Name	Description	Record Type
TOTAL_CU	Number of CUs	8500 (HH level)
REF_MONTH	Reference month	8500 (HH level)
LANGUAGE	Language used to conduct interview	8500 (HH level)
RESPON	Line number of primary respondent	8500 (HH level)
{SURVEY_SET	Group number of section questions selected for reinterview	8500 (HH level)}
NROSIZE	Number of records for Block 01 (HH roster size)	8500 (person level)
LNO	HH composition - line number * MEMBNO in CEQ original instrument - Convert MEMBNO to LNO in manipula script	8500 (person level)
QCRESP	A flag indicating which household members are the respondents for complete original interviews. Place this flag on each person record. In the reinterview, the original respondent (that is, the person the (S)FR actually spoke to) is reinterviewed whenever possible. Values for this flag are: 1 = person (S)FR spoke to 0 = all other household members	8500 (person level)
FNAME	HH composition - first name	8500 (person level)
LNAME	HH composition - last name	8500 (person level)
AGE	HH composition - age	8500 (person level)
REL	HH composition - relationship * CU_CODE in CEQ original instrument - Convert CU_CODE to REL in manipula script	8500 (person level)
SEX	HH composition - sex	8500 (person level)
MEMBSTAT	Household status flag	8500 (person level)
PERSTAT	Status - delete/reinstate	8500 (person level)
AWAY_COL	HH composition - away at college	8500 (person level)
HH_MEM	HH composition - HH member	8500 (person level)
PERCUNUM	HH composition - CU number	8500 (person level)

V. Variables Set in Reinterview Instrument

- A. The generic portions of the reinterview instrument use the following variables. Set these variables in the CEQ reinterview instrument as follows.

RPROXY_A This is a flag indicating whether a proxy is allowed in the reinterview. Set to

1 = proxy allowed in reinterview

OPROXY_A This is a flag indicating whether a proxy interview is allowed in the original survey. Set to

1 = proxy allowed in original interview

OPROXY_U This is a flag indicating for which household member a proxy was used in the original interview. However, since CE does not verify the eligibility of proxy, this flag is not set in the original instrument. Set

OPROXY_U = 0

SURVEY_NAME This is a string variable (200 characters in length) indicating the name of the survey. Set to

Consumer Expenditure Quarterly Survey

USE_CKSUP This is a string variable (three characters in length) indicating if the (S)FR needs authorization before conducting a personal visit due to budget concerns. Set to

Yes = (S)FR needs authorization

<DISCREPANCY> This is an array of 12 elements. It contains a list of codes indicating the various discrepancies found during the reinterview. When the reinterview instrument indicates a discrepancy, the instrument will store the appropriate code in this array. Upon wrapping up a case, the DISCREPANCY array is copied into the Reinterview Notes.

ORIOUT_RSLT This is a string variable (four characters in length) indicating the type of original outcome for a case. Set as follows:

If ORIOUT = 201 or 203, then ORIOUT_RSLT = INT.
If ORIOUT = 216, 217, 219, 321, 322, 323 or 324, then
ORIOUT_RSLT = A.
If ORIOUT = 224, 225, 226, 228, 229, 231, 232, 331, or
332, then ORIOUT_RSLT = B1.
If ORIOUT = 233, then ORIOUT_RSLT = B2.
If ORIOUT = 240, 241, 243, 244, 245, 246 or 252, then
ORIOUT_RSLT = C1.
If ORIOUT = 248, 341 or 342, then ORIOUT_RSLT = C2.

TYPE_D This is a string variable (three characters in length)
indicating if the original survey has original Type D
noninterviews. Set to

No = original survey does not have original Type D
noninterviews.

VACANT_INT This is a string variable (three characters in length)
indicating if the survey has vacant interviews. Set to

No = survey does not have vacant interviews.

REDESIGN This is a string variable (three characters in length)
indicating if the survey has converted to the 2000 Sample
Redesign. Set to

Yes = survey has converted to the 2000 Sample Redesign.

PUERTO_RICO This is a string variable (three characters in length)
indicating if the survey includes Puerto Rico addresses. Set
to

No = survey does not include Puerto Rico addresses.

PV_ONLY This is a string variable (three characters in length)
indicating if the survey requires all original interviews to be
conducted by personal visit. Set to

Yes = All original interviews must be done by personal visit.

MIN_AGE This is a numeric variable (two characters in length)
indicating the minimum age for an eligible respondent. Set
to

16 = minimum age for an eligible respondent

CONTACT_C_INFO(1-3) This is a three string variable (80 characters in length each) indicating some descriptive text for the survey to be filled on the CONTACT_C screen. Set to

CONTACT_C_INFO1 = household expenditures for the Consumer Expenditure Quarterly Survey?

CONTACT_C_INFO2 is empty

CONTACT_C_INFO3 is empty

ROSTER_INFO(1-3) This is a three string variable (80 characters in length each) indicating some descriptive text for the survey to be filled on the ROSTER_3 and ROSTER_4 screens. Set to

ROSTER_INFO1 = didn't have a usual residence elsewhere or who wasn't away at college

ROSTER_INFO2 = on [Fill: INTDATE]

ROSTER_INFO3 is empty

TYPEB_SPLIT This is a string variable (three characters in length) indicating if reinterview noninterview vacants and Usual Residence Elsewhere (UREs) need to be split between regular and seasonal. Set to

No = vacants and UREs are not split between regular and seasonal

RIDATE This is the date stamp that the CEQ reinterview instrument marks when a case is opened. Its format is mmddyyyy.

TIME_C This is the time stamp that the CEQ reinterview instrument marks when a case is opened. Its format is hhmmss in military time.

OIRESP This is a string variable (two characters in length) representing the line number of the original respondent. Set to the line number (LNO) of the household member with QCRESP = 1.

SPANONLY This is a string variable (one character in length) indicating if the household is Spanish speaking. Set as follows:

If LANGUAGE = 2, then SPANONLY = 1.
Else SPANONLY is empty.

- B. The original instrument fills RESPNAME if the respondent is a proxy. To compensate for this, empty RESPNAME if RESPON = 95.
- C. Set the generic contact person information variables in the CEQ reinterview instrument as follows:

CPNAME	=	CP1NAME	
CPTITL	=	CP1TITL	
CPPHON	=	CP1PHON	
		CPEXT	= CP1EXT
CPPHT	=	CP1PHT	
CPADD1	=	CP1ADD1	
CPADD2	=	CP1ADD2	
CPPO	=	CP1PO	
CPST	=	CP1ST	
CPZP5	=	CP1ZP5	
CPZP4	=	CP1ZP4	

- D. The following variables are also set in the CEQ reinterview instrument according to the SPECIAL INSTRUCTIONS for screens in either these specifications or the generic specifications.

Name	Description
INTTYP	Method of reinterview T = telephone reinterview P = personal visit reinterview
LENGTH_T	Length of the original interview in total minutes - (LENGTH_H x 60) + LENGTH_M
INCT_CNT	Tally of the number of persons incorrectly included on the household roster
MISS_CNT	Tally of the number of persons missing from the household roster

Name	Description
ITERATION	Counter for the number of CUs checked
COUNT	Number of persons in the CU being checked
DEPENDENT	Tally of the number of categories showing dependency in a single-person CU
INDEPENDENT	Tally of the number of categories showing independency in a multi-person CU
INCT_CU	Tally of the number of CU's incorrectly formed
OUTCOME	Reinterview case status - see Attachment F for values
RI_DISP	Reinterview disposition code - see Attachment F for values

VI. Variables Passed between Case Management and the CEQ Reinterview Instrument

A. Variables from Case Management

1. Case Management sets ACTION based on OUTCOME. See Attachment F, CEQ Reinterview Disposition, Outcome and Action Codes, for values. This variable must be included in the reinterview output.
2. The CEQ reinterview instrument obtains the name of the (S)FR, variable FR_NAME, from Case Management.
3. The CEQ reinterview instrument obtains the reinterviewer's FR code, FRCODE, from Case Management. If the RO reassigns a case, it changes FRCODE in ROSCO. Case Management then passes the updated variable to the CEQ reinterview instrument.

B. Variables from Case Management and the CEQ Reinterview Instrument

1. The reinterviewer can update the sample unit phone number (AREA, PREFIX, SUFFIX, EXTN) and appointment time (CALLBACK) in both Case Management and the CEQ reinterview instrument. Case Management and the CEQ reinterview instrument pass these variables, with any updates, back and forth to each other.
2. Case Management and the CEQ reinterview instrument also pass the case ID (CASEID) and control number (CTRLNUM) back and forth to each other. These variables serve as identifiers for the case.

C. Variables from the CEQ Reinterview Instrument

1. The reinterviewer can also update the contact person phone number (CPPHON and CPEXT) in the CEQ reinterview instrument. The CEQ reinterview instrument passes these variables, with any updates, to Case Management. The CEQ reinterview instruments must reset these variables back to either CP1PHON and CP1EXT when it passes them to Case Management.
2. CEQ The reinterview instrument sets OUTCOME and RI_DISP, as stated in Section V, above, and passes them to Case Management.

VII. Formats for Date and Time Variables

- A. Use the long format (day of week, month, day, four-digit year) to **display** all date variables in the reinterview instrument. Use the format mmddyyyy when **outputting** all date variables, INTDATE (original interview date) and RIDATE (reinterview date), to the reinterview output file.
- B. Use the format hh:mm am/pm to display all time variables in the reinterview instrument.

VIII. Displaying the Sample Unit Address

Display the sample unit address in the CEQ reinterview instrument using format ADDRESS1. Screens that display the sample unit address are START, DIAL, INTRO_TC, HELLO_TNX, INTRO_TN, INTRO_PC, HELLO_PNX, ADDVER, INTRO_PN, VERBYOBS, PROX_N, PROX_UN, ROSTER_1, SOMEONE_ELSE, CONTACT_N, VACANT, STAT_VER, VACANT2, STATUS, STAT_PROBE, STAT_PROB2,

Format ADDRESS1 is used for surveys that have converted to the 2000 Sample Redesign (REDESIGN = Yes) and do not include Puerto Rico addresses (PUERTO_RICO = No). Format ADDRESS1 uses the address variables on Record Type 2006 of the SCIF, Demographic Address, and is defined as follows:

[Fill: HNO HNOSUF STRNAME UNITDES]
[Fill: BLDGNAME / blank]
[Fill: GQUNITINFO / blank]
[Fill: NONCITYADD / blank]
[Fill: PHYSDDES / blank]
[Fill: PO, ST ZIP5-ZIP4]

FILL INSTRUCTIONS

1. If BLDGNAME not empty, fill BLDGNAME.
Else leave blank, do not display item.
2. IF GQUNITINFO not empty, fill GQUNITINFO.
Else leave blank, do not display item.
3. If NONCITYADD not empty, fill NONCITYADD.
Else leave blank, do not display item.
4. If PHYSDES not empty, fill PHYSDES.
Else leave blank, do not display item.

IX. Displaying the Household Roster

A. Display the household roster in the CEQ reinterview instrument as follows:

- Include all persons who have not been deleted in the original interview.
- Exclude a person from the household roster if:

PERSTAT = 7 or 99. This denotes a person deleted in the current interview period (7) or a person the interviewer realizes he/she mistakenly listed when entering the household roster (99).

or

MEMSTAT = 1 and PERSTAT \neq 9. This denotes a person deleted in a previous interview period and not reinstated in the current interview period.
- List household members first (HH_MEM = 1), followed by non-household members (HH_MEM = 2). Gray the listing of all non-household members.
- Do not leave blank lines between persons included in the household roster. Rather, condense the listing to compensate for any deleted person.

Generic screens that display the household roster are: HHCOMP, RIRESP, ROSTER_1, ROSTER_2, ROSTER_3, and ROSTER_4.

B. Other CEQ Survey specific screens that display the household roster are SINGLE_RELATED, SINGLE_HOUSING, SINGLE_FOOD, SINGLE_OTHER, MULTI_RELATED, MULTI_HOUSING, MULTI_FOOD, and MULTI_OTHER. These screens have the additional specifications:

- List only household members (HH_MEM=1).

- Gray any household member whose PERCUNUM ≠ ITERATION.

X. Access to Original CAPI Notes and Reinterview Notes

Within the CEQ reinterview instrument, provide access between the instrument and the original CAPI notes and the reinterview notes. Both the original CAPI notes and the reinterview notes are separate text files maintained outside the instrument.

- Allow the reinterviewer access to only view the original CAPI notes.
- Allow the reinterviewer access to enter, view, or edit the reinterview notes.

XI. Function Keys

Descriptions of the functions keys are listed below. These keys comply with the listing of Keys Assignments for Consumer Expenditures Survey, dated July 25, 2000.

The "F" Keys

F1	
F2	
F3	
F4	
F5	
F6	
F7	Item notes/remarks
F8	
F9	
F10	Exit - Skip to the END of the reinterview (FIN screen)
F11	
F12	

The "Shift-F" Keys

Shift-F1	Display the household roster (HHCOMP screen)
Shift-F2	Display the Original Survey Frequently Asked Questions (FAQs) (H_PURPOSE screen)
Shift-F3	Display the Reinterview FAQs (RIREASON screen)
Shift-F4	
Shift-F5	
Shift-F6	
Shift-F7	
Shift-F8	
Shift-F9	
Shift-F10	

Shift-F11 Display standard abbreviations (H_ABBREVI screen)
Shift-F12 Display original CAPI notes

The "Ctrl" Keys

Ctrl-D Don't know (D)
Ctrl-K Display function key descriptions (KEY_REF screen)
Ctrl-R Refusal (R)
Ctrl-F7 Access reinterview notes

Special Purpose Keys

Esc Cancel
Home Moves to beginning of form
End Moves to first unanswered field on path
Page Up Moves backward one page/screen
Page Down Moves forward one page/screen
Up Arrow Move upward or backward one field
Down Arrow Moves downward or forward one field
Left Arrow Moves to previous field
Right Arrow Moves to next field

XII. Refreshing OUTCOME = 202 Cases

If the CEQ reinterview instrument is exited with OUTCOME=202, refresh the case upon reopening the instrument. Always maintain the reinterview input file variables and any updates to them (example, phone number changes) when the instrument is reopened. Also maintain CALLBACK and the case's history in Case Management.

XIII. Front Specifications

The screens for the front of the instrument appear in this section.

- **UNIVERSE** - RIREASON = 3

*Don't you have anything better to do with my tax dollars?
I'm too busy to answer your questions again.*

The Bureau of Labor Statistics uses the data from this survey to measure the changes in prices in consumer goods and services. Information collected in this survey contributes to the Consumer Price Index, which assesses the change in purchasing power of consumer dollars. The Census Bureau's method of measuring data quality for this survey is to re-contact a percentage of respondents to check that the data was collected correctly during the original interview. We believe this method helps the Census Bureau prevent the wasting of your tax dollars.

1. Continue
2. Back to Reinterview Help Menu

<u>Name</u>	<u>Description</u>	<u>Value</u>	<u>Skip</u>
RIREF3	Reason 3	1	[return to reinterview]
		2	[goto RIREASON]

· **UNIVERSE** - Shift-F2 or
H_PURPOSE1-n = 2

Frequently Asked Questions

◆ Press F8 to proceed with reinterview.

1. What is this survey all about?
2. Who uses this information? What good is it?
3. How is the data collected?
How many times will I be interviewed?
4. I hesitate to tell some things about myself.
What protection do I have?
5. Is this survey authorized by law?
6. Return to reinterview

<u>Name</u>	<u>Description</u>	<u>Value</u>	<u>Skip</u>
H_PURPOSE	Frequently asked questions	1	[goto H_PURPOSE1]
		2	[goto H_PURPOSE2]
		3	[goto H_PURPOSE3]
		4	[goto H_PURPOSE4]
		5	[goto H_PURPOSE4]
		6	[return to reinterview]

· **SPECIAL INSTRUCTIONS**

This screen is a reference screen accessed by the Shift-F2 key.

This FAQ menu screen is the same as that in the original instrument.

- **UNIVERSE** - H_PURPOSE = 1

What is this survey all about?

The consumer expenditure survey collects information from the nation's households and families on their buying habits (expenditures), income, and characteristics. The strength of the survey is that it allows data users to relate the expenditures and income of consumers to the characteristics of those consumers.

1. Continue
2. Back to Frequently Asked Questions? menu

<u>Name</u>	<u>Description</u>	<u>Value</u>	<u>Skip</u>
H_PURPOSE1	Frequent question 1	1	[return to reinterview]
		2	[goto H_PURPOSE]

- **SPECIAL INSTRUCTIONS**

Use the same FAQ as H_PURPOSE1 in the original instrument.

· **UNIVERSE** - H_PURPOSE = 2

Who uses this information? What good is it?

Data from the consumer expenditure survey are used in a number of different ways by a variety of users. An important use of the survey by the bureau of labor statistics is for the periodic revisions of the consumer price index (cpi). Survey results are used to select new market basket of goods and services for the cpi, to determine the relative importance of cpi components, and to derive new cost weights for the market basket.

Government and private agencies use the data to study the welfare of particular segments of the population. Economic policymakers use the data to study the impact of policy changes in the welfare of different socioeconomic groups. Researchers use the data in a variety of studies, including those that focus on the spending behavior of different family types and historical spending trends.

1. Continue
2. Back to Frequently Asked Questions? menu

<u>Name</u>	<u>Description</u>	<u>Value</u>	<u>Skip</u>
H_PURPOSE2	Frequent question 2	1	[return to reinterview]
		2	[goto H_PURPOSE]

· **SPECIAL INSTRUCTIONS**

Use the same FAQ as H_PURPOSE2 in the original instrument.

· **UNIVERSE** - H_PURPOSE = 3

How is the data collected?

How many times will I be interviewed?

Data collection is carried out by the bureau of the census. In the interview survey, each consumer unit is interviewed every 3 months over 5 calendar quarters. In the initial interview, information is collected on demographic and family characteristics and on the inventory of major durable goods of the consumer unit. Expenditure information is collected in the second through fifth interview using uniform questionnaires. In the fifth interview, a supplement is used to account for changes in assets and liabilities.

1. Continue
2. Back to Frequently Asked Questions? menu

<u>Name</u>	<u>Description</u>	<u>Value</u>	<u>Skip</u>
H_PURPOSE3	Frequent question 2	1	[return to reinterview]
		2	[goto H_PURPOSE]

· **SPECIAL INSTRUCTIONS**

Use the same FAQ as H_PURPOSE3 in the original instrument.

· **UNIVERSE** - H_PURPOSE = 4

*I hesitate to tell some things about myself.
What protection do I have?*

The information that respondents provide is used solely for statistical purposes. All census bureau data collectors take an oath of confidentiality and are subject to fines and imprisonment for improperly disclosing information provided by respondents. Names and addresses are removed from all forms and that information is not released as part of any statistical data.

1. Continue
2. Back to Frequently Asked Questions? menu

<u>Name</u>	<u>Description</u>	<u>Value</u>	<u>Skip</u>
H_PURPOSE4	Frequent question 2	1	[return to reinterview]
		2	[goto H_PURPOSE]

· **SPECIAL INSTRUCTIONS**

Use the same FAQ as H_PURPOSE4 in the original instrument.

· **UNIVERSE** - H_PURPOSE = 5

Is this survey authorized by law?

The Bureau of Labor Statistics conducts the Consumer Expenditure Survey under the authority of Title 29 of the U.S. Code. Congress authorizes the financial support for the CE survey through Public Laws 94-439 and 95-205.

The Bureau of the Census collects the CE data under the authority of Title 13, U.S. Code, Section 8b, which allows the Census Bureau to undertake surveys for other government agencies. Participation in the survey is voluntary. Under Title 13, the Census Bureau holds all information in strict confidence. We will not release information reported in the survey which would permit the identification of a household or any of its members to anyone outside of the Census Bureau.

1. Continue
2. Back to Frequently Asked Questions? menu

<u>Name</u>	<u>Description</u>	<u>Value</u>	<u>Skip</u>
H_PURPOSE5	Frequent question 2	1	[return to reinterview]
		2	[goto H_PURPOSE]

· **SPECIAL INSTRUCTIONS**

Use the same FAQ as H_PURPOSE5 in the original instrument.

UNIVERSE - OUTCOME = 200 [to access case] or
 OUTCOME = 202 (i.e. insufficient partial) or OUTCOME = 213-219 (i.e. Type A)
 [to reaccess case]

Note: This UNIVERSE is not used by the instrument, but rather controlled by Case Management.

<p><i>[Fill: SURVEY_NAME]</i> CAPI Quality Control Reinterview</p> <p>Date: <i>[Fill: RIDATE]</i> Time: <i>[Fill: TIME_C]</i></p> <p>Reinterview Case Status: <i>[Fill: OUTCOME and OUTCOME's description]</i></p> <p>Original Interview Date: <i>[Fill: INTDATE]</i></p> <p>Original FR Code - Name: <i>[Fill: ORIFR] "-" [Fill: FR_NAME]</i> Original Outcome: <i>[Fill: ORIOUT and ORIOUT's description]</i> <i>[Fill: TYPEA_SP / TYPEB_SP / TYPEC_SP /blank]</i></p> <p>Original Respondent Name: <i>[Fill: RESPNAME]</i> Sample Unit Phone: (<i>[Fill: AREA]</i>) <i>[Fill: PREFIX]</i>-<i>[Fill: SUFFIX]</i>, ext.<i>[Fill: EXTN]</i> (<i>[Fill: PHTYPE PHTYP's description]</i>) <i>[Fill: "Second Phone:" SPHONE (SPHTYP's description) / blank]</i></p> <p>Sample Unit Address: <i>[Fill: ADDRESS1 / ADDRESS2 / ADDRESS3 / ADDRESS4]</i></p> <p><i>[Fill: "Best Time to Contact:" BESTTIME's description / "Best Time to Contact:" BESTTIM2 / blank]</i> <i>[Fill: "Or" BESTTIM2 / blank]</i></p> <p><i>[Fill: "DO NOT call on Sunday" / blank]</i></p> <p><i>[Fill: "Spanish speaking" / blank]</i></p>
<ol style="list-style-type: none"> 1. Continue 2. Quit - Attempt later

<u>Name</u>	<u>Description</u>	<u>Value</u>	<u>Skip</u>
START	Start up screen	1	[If ORIOUT_RSLT = B1, C1, B2, C2 or VINT and BYOBS = 2 goto START_1A] [goto START_1]
		2	[goto RINOTES_PRE]

FILL INSTRUCTIONS

1. Fill OUTCOME's description with the reinterview outcome code description from Attachment F, Reinterview Disposition, Outcome, and Action Codes.
2. Fill ORIOUT's description with the original outcome code description from Attachment E, "List of Original Outcome Codes in the Original Instrument."
3. If ORIOUT = 219, fill TYPEA_SP.
If ORIOUT = 233, fill TYPEB_SP.
If ORIOUT = 248, fill TYPEC_SP.
Else leave blank, do not display item.
4. If SPHONE not empty, fill "Second Phone:" SPHONE (SPHTYP's description).
Else leave blank, do not display item.
5. Fill PHTYP's and SPHTYP's descriptions with the following descriptions of the values of PHTYP and SPHTYP, respectively:

<u>Values</u>	<u>Description</u>
1	HOME
2	WORK
3	Cellular or Digital
4	Beeper/Pager/Answering Service
5	PUBLIC PAY PHONE
6	OTHER
7	FAX
6. If REDESIGN = Yes and PUERTO_RICO = No, fill with format ADDRESS1.
If REDESIGN = No and PUERTO_RICO = No, fill with format ADDRESS2.
If PUERTO_RICO = Yes and PSU ≠ 72, fill with format ADDRESS3.
If PUERTO_RICO = Yes and PSU = 72, fill with format ADDRESS4.
7. If BESTTIME not empty, fill "Best Time to Contact:" BESTTIME's description.

If BESTTIME empty and BESTTIM2 not empty, fill "Best Time to Contact:" BESTTIM2.

If BESTTIME empty and BESTTIM2 empty, leave blank, do not display item.

8. If BESTTIME not empty and BESTTIM2 not empty, fill "Or" BESTTIM2. Else leave blank, do not display item.
9. Fill BESTTIME's description with the following descriptions of the values of BESTTIME:

<u>Values</u>	<u>Description</u>
00	Special restriction; supervisor sets appointment
01	Morning (9am-12 noon)
02	Noon/lunchtime (11am - 1pm)
03	Afternoon (12 noon-4pm)
04	Supper/early evening/dinnertime (4pm-7pm)
05	Evening (6pm-9pm)
06	Anytime (9am-9pm)
07	Late evening/night (7pm-9pm)
08	Daytime (9am-4pm)
09	After 5pm (5pm-9pm)
10. If NOSUNDAY = 1, fill "DO NOT call on Sunday." Else leave blank, do not display item.
11. If SPANONLY = 1, fill "Spanish speaking." Else leave blank, do not display item.

· SPECIAL INSTRUCTIONS

If START = 2, set OUTCOME = 202.

- **UNIVERSE** - (START_1 = 1 and ORIOUT_RSLT = INT) or Shift-F1

<i>Line No.</i>	<i>Name</i>	<i>Relationship</i>	<i>Age</i>	<i>Sex</i>	<i>Away at college</i>	<i>HH member</i>	<i>CU number</i>
<i>[Fill: LNO]</i>	<i>[Fill: FNAME LNAME]</i>	<i>[Fill: REL]</i>	<i>[Fill: AGE]</i>	<i>[Fill: SEX]</i>	<i>[Fill: AWAY_COL]</i>	<i>[Fill: HH_MEM]</i>	<i>[Fill: PERCUNUM]</i>
.
.
◆ Press Shift-F1 to access this screen at any time during the reinterview.							
◆ Enter 1 to continue.							
1. Continue							

- **Name** **Description** **Value** **Skip**
 HHCOMP Household composition 1 [goto METHOD]

- **SPECIAL INSTRUCTIONS**

This screen displays the household roster. Fill REL, SEX, AWAY_COL, and HH_MEM with their descriptions from Attachment G.

Return to reinterview if accessed by the Shift-F1 key.

- **UNIVERSE** - (METHOD = 1 and ORIOUT_RSLT = INT) or
(METHOD = 1 and ORIOUT_RSLT = B1, C1, B2, C2 or VINT and BYOBS = 2)
or WRNUM = 1 (used for coming back to DIAL) or
REFNUM = 2 (used for coming back to DIAL) or
END = 1 (_END_ is a dummy variable used to update phone number)

Respondent Name: [Fill: RESPNAME]

Respondent Address: [Fill: ADDRESS1 /
ADDRESS2 /
ADDRESS3 /
ADDRESS4]

/

Contact Name: [Fill: CPNAME]

Contact Address: [Fill: CPADD1
CPADD2
CPPO, CPST CPZP5-CPZP4]

◆ Dial this number:

(([Fill: AREA]) [Fill: PREFIX]-[Fill: SUFFIX], ext. [Fill: EXTN] ([Fill: PHTYPE PHTYP's
description]) /
[Fill: CPPHON], ext. [Fill: CPEXT] ([Fill: CPPHT's description])

1. Someone answers
2. Enter new telephone number
3. Reinterview Noninterview
4. Quit - Attempt later

<u>Name</u>	<u>Description</u>	<u>Value</u>	<u>Skip</u>
DIAL	Dial phone number	1	[If ORIOUT_RSLT = INT and RESPNAME empty goto HELLO_TCX] [If ORIOUT_RSLT = INT goto HELLO_TC] [If CPNAME empty goto HELLO_TNX] [goto HELLO_TN]
		2	[goto _INTRO_]
		3	[goto STATUS_RI]

<u>Name</u>	<u>Description</u>	<u>Value</u>	<u>Skip</u>
		4	[goto RINOTES_PRE]

· FILL INSTRUCTIONS

1. If ORIOUT_RSLT = INT, fill Respondent Name with RESPNAME. Fill Respondent Address with format ADDRESS1 if REDESIGN = Yes and PUERTO_RICO = No, with format ADDRESS2 if REDESIGN = No and PUERTO_RICO = No, with format ADDRESS3 if PUERTO_RICO = Yes and PSU ≠ 72, and with format ADDRESS4 if PUERTO_RICO = Yes and PSU = 72. Dial this number with AREA, PREFIX, SUFFIX, EXTN, PHTYPE PHTYP's description.
2. If ORIOUT_RSLT = B1, C1, B2, C2 or VINT, fill Contact Name with CPNAME, Contact Address with CPADD1, CPADD2, CPPO, CPST, CPZP5, CPZP4, and dial this number with CPPHON, CPEXT, CPPHT's description.
3. Fill PHTYP's and CPPHT's descriptions with the following descriptions of the values of PHTYP and CPPHT, respectively:

<u>Values</u>	<u>Description</u>
1	HOME
2	WORK
3	Cellular or Digital
4	Beeper/Pager/Answering Service
5	PUBLIC PAY PHONE
6	OTHER
7	FAX

· SPECIAL INSTRUCTIONS

If DIAL = 4, set OUTCOME = 202.

XIV. Middle Specifications

The screens for the middle of the instrument appear in this section. Response choices in italics are blind don't knows or refusals. Do not show these choices, but allow the reinterviewer to enter Ctrl-D for "don't know" (D) or Ctrl-R for "refusal" (R), where noted. Output "don't know" as "9" and fill with preceding "9"s if variable length > 1. Output "refusal" as "8" and fill with preceding "9"s if variable length > 1. If a screen has eight or nine response choices, and allows "don't know" or "refusal," the specifications writers must specify length = 2 for the variable to differentiate between a response choice of 8 or 9 and a "don't know" (99) or "refusal" (98).

- **UNIVERSE** - (INTRO_TC = 1, 2 or 3) or
 (INTRO_PC = 1, 2 or 3) or
 (ADDVER = 1 and RPROXY_A = 1 and (HELLO_TC = 3 or 5 or HELLO_PC
 = 2 or 4 or HELLO_TCX = 1 or HELLO_PCX = 1)) or
 (SPEAKTO = 1 and CONTACT_C = 2 or D) or
 (PROX_UC = 1)

<i>Line No.</i>	<i>Name</i>	<i>Relationship</i>	<i>Age</i>	<i>Sex</i>	<i>Away at college</i>	<i>HH member</i>	<i>CU number</i>
<i>[Fill: LNO]</i>	<i>[Fill: FNAME LNAME]</i>	<i>[Fill: REL]</i>	<i>[Fill: AGE]</i>	<i>[Fill: SEX]</i>	<i>[Fill: AWAY_COL]</i>	<i>[Fill: HH_MEM]</i>	<i>[Fill: PERCUNUM]</i>
.
.

◆ Ask if necessary ◆ With whom am I speaking?

◆ Enter line number of person you are speaking to or (0) if person is not on roster.

Name	Description	Value	Skip
RIRESP	Reinterview Respondent	<0 - maximum line number>	[goto CONTACT_C]

- SPECIAL INSTRUCTIONS

This screen displays the household roster. Fill REL, SEX, AWAY_COL, and HH_MEM with their descriptions from Attachment G.

- **UNIVERSE** - (CONTACT_C = 1 and (INTRO_TC = 1, 2 or 3 or INTRO_PC = 1, 2 or 3)) or (PROX_PRESENT = 1) or (CONTACT_N = 1 and (INTRO_TN = 1 or INTRO_PN = 1))

Did the interviewer visit in person or call on the telephone?
<ol style="list-style-type: none"> 1. Personal visit only 2. Telephone call only 3. Both - Interviewer visited and called

<u>Name</u>	<u>Description</u>	<u>Value</u>	<u>Skip</u>
ORMODE	Interview Mode	1	[goto POLITE]
		2	[If CONTACT_C = 1 goto PHONE_REQUEST] [goto POLITE]
		3	[goto POLITE]
		<i>Ctrl-D = Don't know</i>	[goto POLITE]

- SPECIAL INSTRUCTIONS

If ORMODE = 2 and CONTACT_C = 1 and PV_ONLY = Yes, store code 9 in element [9] of DISCREPANCY array.

NEW SCREEN

- **UNIVERSE** - ORMODE = 2 and CONTACT_C = 1

Did you request the telephone interview?
1. Yes
2. No - Telephone interview requested by interviewer

<u>Name</u>	<u>Description</u>	<u>Value</u>	<u>Skip</u>
PHONE_REQUEST	Phone Call Requested	1	[goto POLITE]
		2	[goto POLITE]
		<i>Ctrl-D = Don't know</i>	[goto POLITE]

- **SPECIAL INSTRUCTIONS**

If PHONE_REQUEST = 2, store code 9 in element [9] of DISCREPANCY array.

- **UNIVERSE** - (ORMODE = 1, 2, 3, or D) or
(ORMODE = 2 and CONTACT_N = 1) or
(PHONE_REQUEST = 1, 2, or D)

Was the interviewer polite and professional?
1. Yes 2. No

<u>Name</u>	<u>Description</u>	<u>Value</u>	<u>Skip</u>
POLITE	FR Polite/Professional	1	[If CONTACT_C = 1 goto LENGTH_H] [If ORMODE = 1 or 3 goto LAPTOP] [If ORIOUT_RSLT = B2 or C2 goto STAT_PROBE] [If ORIOUT_RSLT = B1 or C1 goto STATUS] [goto VACANT]
		2	[goto PO_NOTES]
		<i>Ctrl-D = Don't know</i>	[If CONTACT_C = 1 goto LENGTH_H] [If ORMODE = 1 or 3 goto LAPTOP] [If ORIOUT_RSLT = B2 or C2 goto STAT_PROBE] [If ORIOUT_RSLT = B1 or C1 goto STATUS] [goto VACANT]

- **UNIVERSE** - (LENGTH_H = D and ORMODE = 2 or D) or
 (LENGTH_M = <0-90> and ORMODE = 2 or D) or
 (LAPTOP = 1, 2 or D and CONTACT_C = 1) or
 (PROX_PRESENT = 2 and CONTACT_C = 1) or
 (CONTACT_C = 2 or D and (HELLO_TCX=1 or HELLO_PCX=1 or PROX_C
 = 1 or PROX_UC = 1)) or
 (SOMEONE_ELSE = 2 or D and CONTACT_C = 2 or D) or
 (SPEAKTO = 2 and CONTACT_C = 2 or D)

<i>Line No.</i>	<i>Name</i>	<i>Relationship</i>	<i>Age</i>	<i>Sex</i>	<i>Away at college</i>	<i>HH member</i>	<i>CU number</i>
[Fill: LNO]	[Fill: FNAME LNAME]	[Fill: REL]	[Fill: AGE]	[Fill: SEX]	[Fill: AWAY_CO L]	[Fill: HH_MEM]	[Fill: PERCUNUM]
.
.

Our records indicate that ♦Read above name(s) in blue♦ was/were living or staying at

[Fill: ADDRESS1 /
ADDRESS2 /
ADDRESS3 /
ADDRESS4]

on [Fill: INTDATE].

Is this correct?

1. Yes
2. No

<u>Name</u>	<u>Description</u>	<u>Value</u>	<u>Skip</u>
ROSTER_1	Roster verification	1	[goto ROSTER_3]
		2	[goto ROSTER_2]

<u>Name</u>	<u>Description</u>	<u>Value</u>	<u>Skip</u>
		<i>Ctrl-D = Don't know</i>	[goto ROSTER_3]
		<i>Ctrl-R = Refusal</i>	[goto ROSTER_3]

· FILL INSTRUCTIONS

If REDESIGN = Yes and PUERTO_RICO = No, fill with format ADDRESS1.

If REDESIGN = No and PUERTO_RICO = No, fill with format ADDRESS2.

If PUERTO_RICO = Yes and PSU \neq 72, fill with format ADDRESS3.

If PUERTO_RICO = Yes and PSU = 72, fill with format ADDRESS4.

· SPECIAL INSTRUCTIONS

This screen displays the household roster. Fill REL, SEX, AWAY_COL, and HH_MEM with their descriptions from Attachment G.

If ROSTER_1 = 2, store code 7 in element [7] of DISCREPANCY array.

· UNIVERSE - ROSTER_1 = 2

<i>Line No.</i>	<i>Name</i>	<i>Relationship</i>	<i>Age</i>	<i>Sex</i>	<i>Away at college</i>	<i>HH member</i>	<i>CU number</i>
<i>[Fill: LNO]</i>	<i>[Fill: FNAME LNAME]</i>	<i>[Fill: REL]</i>	<i>[Fill: AGE]</i>	<i>[Fill: SEX]</i>	<i>[Fill: AWAY_COL]</i>	<i>[Fill: HH_MEM]</i>	<i>[Fill: PERCUNUM]</i>
.
.

◆Enter the line number of the household member(s) (above name(s) in blue) who wasn't/weren't living or staying at the household on [Fill: INTDATE].

[Fill: LNO].	[Fill: FNAME LNAME]
.	.
.	.
.	.

<u>Name</u>	<u>Description</u>	<u>Value</u>	<u>Skip</u>
ROSTER_2	Roster verification - deletes	list of line numbers, <1 - maximum line number>	[goto ROSTER_3]

· SPECIAL INSTRUCTIONS

This screen displays the household roster. Fill REL, SEX, AWAY_COL, and HH_MEM with their descriptions from Attachment G.

Mark all that apply type of entry.

Calculate count of the number of incorrect persons entered, but do not display. Store this value in the variable INCT_CNT.

- **UNIVERSE** - (ROSTER_1 = 1, D or R) or
(Any valid value in ROSTER_2)

<i>Line No.</i>	<i>Name</i>	<i>Relationship</i>	<i>Age</i>	<i>Sex</i>	<i>Away at college</i>	<i>HH member</i>	<i>CU number</i>
[Fill: LNO]	[Fill: FNAME LNAME]	[Fill: REL]	[Fill: AGE]	[Fill: SEX]	[Fill: AWAY_COL]	[Fill: HH_MEM]	[Fill: PERCUNUM]
.
.

Have I missed any household member who
[Fill: ROSTER_INFO1]
[Fill: ROSTER_INFO2]
[Fill: ROSTER_INFO3]

1. Yes
2. No

- | <u>Name</u> | <u>Description</u> | <u>Value</u> | <u>Skip</u> |
|-------------|---|--------------|---|
| ROSTER_3 | Roster verification
- check for adds | 1 | [goto ROSTER_4] |
| | | 2 | [If LENGTH_H = D or LENGTH_M =
<0-90> goto SURVEY_1]
[goto THANK_YOU] |
| | Ctrl-D =
Don't know | | [If LENGTH_H = D or LENGTH_M =
<0-90> goto SURVEY_1]
[goto THANK_YOU] |
| | Ctrl-R =
Refusal | | [If LENGTH_H = D or LENGTH_M =
<0-90> goto SURVEY_1]
[goto THANK_YOU] |

- SPECIAL INSTRUCTIONS

This screen displays the household roster. Fill REL, SEX, AWAY_COL and HH-MEM with their descriptions from Attachment G.

If ROSTER_3 = 1, store code 7 in element [7] of DISCREPANCY array.

-

· UNIVERSE - ROSTER_3 = 1

<i>Line No.</i>	<i>Name</i>	<i>Relationship</i>	<i>Age</i>	<i>Sex</i>	<i>Away at college</i>	<i>HH member</i>	<i>CU number</i>
<i>[Fill: LNO]</i>	<i>[Fill: FNAME LNAME]</i>	<i>[Fill: REL]</i>	<i>[Fill: AGE]</i>	<i>[Fill: SEX]</i>	<i>[Fill: AWAY_COL]</i>	<i>[Fill: HH_MEM]</i>	<i>[Fill: PERCUNUM]</i>
.
.

◆ Enter the name of each missing household member who
 [Fill: ROSTER_INFO1]
 [Fill: ROSTER_INFO2]
 [Fill: ROSTER_INFO3]

◆ Press Enter after each name and again after last name to continue.

<u>Name</u>	<u>Description</u>	<u>Value</u>	<u>Skip</u>
ROSTER_4	Roster verification - adds	list of up to 15 names	[If LENGTH_H = D or LENGTH_M = <0-90> goto SURVEY_1] [goto THANK_YOU]

· SPECIAL INSTRUCTIONS

This screen displays the household roster. Fill REL, SEX, AWAY_COL, and HH-MEM with their descriptions from Attachment G.

Mark all that apply type of entry.

Calculate count of the number of missing persons entered, but do not display. Store this value in the variable MISS_CNT.

 -

- **UNIVERSE** - (ROSTER_3 = 2, D or R and (LENGTH_H = D or LENGTH_M = <0-90>)) or (Any valid value in ROSTER_4 and (LENGTH_H = D or LENGTH_M = <0-90>)) or VACANT = 1

The Consumer Expenditure Quarterly Survey uses the words consumer unit or CU. A household may contain one CU or more than one CU. A CU may contain one household member or a group of household members.

[Fill: 'Since our records have you as the only household member, you make up one CU.

/

'Since our records have [Fill: FNAME LNAME (from only person level record)] as the only household member, he/she makes up one CU.'

/

All household members who are related make up a CU. By related I mean by blood, marriage, adoption, or other legal arrangement.

For people who are unrelated, a group of household members make up a CU if they are dependent on one another for payment of their major expenses. A household member makes up his own CU if he is independent of all other household members for payment of his major expenses. By major expenses I mean housing expenses, food expenses, and other living expenses such as clothing, transportation, etc.')

◆ Press 1 to continue.

1. Continue

<u>Name</u>	<u>Description</u>	<u>Value</u>	<u>Skip</u>
SURVEY_1	CU definition	1	[If INCT_CNT ≥ 1 or MISS_CNT ≥ 1 or NROSIZE = 1 goto TENURE_1] [goto CU_LISTING]

- **FILL INSTRUCTIONS**

If NROSIZE =1 and RIRESP > 0, fill 'Since our records have you as the only household member, you make up one CU.'

If NROSIZE =1 and RIRESP = 0, fill 'Since our records have' FNAME and LNAME from only person level record 'as the only household member, he/she makes up one CU.'

Else fill 'All household members who are related make up a CU. By related I mean by blood, marriage, adoption, or other legal arrangement.

For people who are unrelated, a group of household members make up a CU if they are dependent on one another for payment of their major expenses. A household member makes up his own CU if he is independent of all other household members for payment of his major expenses. By major expenses I mean housing expenses, food expenses, and other living expenses such as clothing, transportation, etc.'

- SPECIAL INSTRUCTIONS

If INCT_CNT _ 1 and MISS_CNT _ 1 and NROSIZE > 1, set ITERATION = 1 and INCT_CU = 0.

NEW SCREEN

- **Universe** - (SURVEY_1 = 1 and INCT_CNT _ 1 and MISS_CNT _ 1 and NROSIZE > 1) or (SINGLE_RELATED = 1 and TOTAL_CU ≥ ITERATION) or (Any valid value in SINGLE_OTHER and TOTAL_CU ≥ ITERATION) or (MULTI_RELATED = 1, D, or R and TOTAL_CU ≥ ITERATION) or (Any valid value in MULTI_OTHER and TOTAL_CU ≥ ITERATION)

Line No.	Name	Relationship	Age	Sex	Away at college	HH member	CU number
[Fill: LNO]	[Fill: FNAME LNAME]	[Fil: REL]	[Fill: AGE]	[Fill: SEX]	[Fill: AWAY_COL]	[Fill: HH_MEM]	[Fill: PERCUNUM]
.

Our records indicate that ♦Read above names that are highlighted♦ formed a CU on [Fill: INTDATE].

♦ Press 1 to continue.

1. Continue

<u>Name</u>	<u>Description</u>	<u>Value</u>	<u>Skip</u>
CU_LISTING	CU listing	1	[If COUNT = 1, goto SINGLE_RELATED] [If COUNT > 1, goto MUTLI_RELATED]

- **SPECIAL INSTRUCTIONS**

1. Display the household roster for household members (HH_MEM = 1). Gray all household members with PERCUNUM ≠ ITERATION. Fill REL, SEX, AWAY_COL, and HH_MEM with the descriptions from Attachment G.
 2. Calculate count of the number of household members listed in this CU, that is, the number of persons with HH_MEM=1 and PERCUNUM=ITERATION. Do not display. Store this value in the variable COUNT.
-

NEW SCREEN

- **Universe** - CU_LISTING = 1 and COUNT = 1

Line No.	Name	Relationship	Age	Sex	Away at college	HH member	CU number
[Fill: MEMBNO]	[Fill: FNAME LNAME]	[Fil: REL]	[Fill: AGE]	[Fill: SEX]	[Fill: AWAY_COL]	[Fill: HH_MEM]	[Fill: PERCUNUM]
.

Is ♦Read above name that is highlighted♦ related by blood, marriage, adoption, or other legal arrangement to any other household member?

1. Yes
2. No

<u>Name</u>	<u>Description</u>	<u>Value</u>	<u>Skip</u>
SINGLE_RELATED	One person CU - related	1	[If TOTAL_CU ≥ ITERATION goto CU_LISTING [goto TENURE_1]
		2	[goto SINGLE_HOUSING]
		<i>Ctrl-D = Don't know</i>	[goto SINGLE_HOUSING]
		<i>Ctrl-R = Refusal</i>	[goto SINGLE_HOUSING]

- **SPECIAL INSTRUCTIONS**

1. Display the household roster for household members (HH_MEM = 1). Gray all household members with PERCUNUM ≠ ITERATION. Fill REL, SEX, AWAY_COL, and HH_MEM with the descriptions from Attachment G.
2. If SINGLE_RELATED = 1, set INCT_CU = INCT_CU + 1 and store code 12 in element [12] of DISCREPANCY array.

3. If `SINGLE_RELATED = 1`, set `ITERATION = ITERATION + 1`.
 4. If `SINGLE_RELATED = 2`, 'Don't know,' or 'Refused,' set `DEPENDENT = 0`.
-

NEW SCREEN

- **Universe** - SINGLE_RELATED = 2, D, or R

Line No.	Name	Relationship	Age	Sex	Away at college	HH member	CU number
[Fill: MEMBNO]	[Fill: FNAME LNAME]	[Fill: REL]	[Fill: AGE]	[Fill: SEX]	[Fill: AWAY_COL]	[Fill: HH_MEM]	[Fill: PERCUNUM]
.

Does any other household member pay for all or part of ♦Read above name that is highlighted♦ housing expenses?

1. Yes
2. No

<u>Name</u>	<u>Description</u>	<u>Value</u>	<u>Skip</u>
SINGLE_HOUSING	One person CU - housing expenses	1	[goto SINGLE_FOOD]
		2	[goto SINGLE_FOOD]
		<i>Ctrl-D = Don't know</i>	[goto SINGLE_FOOD]
		<i>Ctrl-R = Refusal</i>	[goto SINGLE_FOOD]

- **SPECIAL INSTRUCTIONS**

1. Display the household roster for household members (HH_MEM = 1). Gray all household members with PERCUNUM ≠ ITERATION. Fill REL, SEX, AWAY_COL, and HH_MEM with the descriptions from Attachment G.]
 2. If SINGLE_RELATED = 1, set DEPENDENT = DEPENDENT + 1.
-

NEW SCREEN

- **Universe** - Any valid value in SINGLE_HOUSING

Line No.	Name	Relationship	Age	Sex	Away at college	HH member	CU number
[Fill: MEMBNO]	[Fill: FNAME LNAME]	[Fill: REL]	[Fill: AGE]	[Fill: SEX]	[Fill: AWAY_COL]	[Fill: HH_MEM]	[Fill: PERCUNUM]
.

Does any other household member pay for all or part of ♦Read above name that is highlighted♦ food expenses?

1. Yes
2. No

<u>Name</u>	<u>Description</u>	<u>Value</u>	<u>Skip</u>
SINGLE_FOOD	One person CU - food expenses	1	[goto SINGLE_OTHER]
		2	[goto SINGLE_OTHER]
		<i>Ctrl-D = Don't know</i>	[goto SINGLE_OTHER]
		<i>Ctrl-R = Refusal</i>	[goto SINGLE_OTHER]

- **SPECIAL INSTRUCTIONS**

1. Display the household roster for household members (HH_MEM = 1). Gray all household members with PERCUNUM ≠ ITERATION. Fill REL, SEX, AWAY_COL, and HH_MEM with the descriptions from Attachment G.
 2. If SINGLE_FOOD = 1, set DEPENDENT = DEPENDENT + 1.
-

NEW SCREEN

- **Universe** - Any valid entry in SINGLE_FOOD

Line No.	Name	Relationship	Age	Sex	Away at college	HH member	CU number
[Fill: MEMBNO]	[Fill: FNAME LNAME]	[Fill: REL]	[Fill: AGE]	[Fill: SEX]	[Fill: AWAY_COL]	[Fill: HH_MEM]	[Fill: PERCUNUM]
.

Does any other household member pay for all or part of ♦Read above name that is highlighted♦ other living expenses, such as clothing, transportation?

1. Yes
2. No

Name	Description	Value	Skip
SINGLE_OTHER	One person CU - other expenses	1	[If TOTAL_CU ≥ ITERATION, goto CU_LISTING] [goto TENURE_1]
		2	[If TOTAL_CU ≥ ITERATION, goto CU_LISTING] [goto TENURE_1]
		<i>Ctrl-D = Don't know</i>	[If TOTAL_CU ≥ ITERATION, goto CU_LISTING] [goto TENURE_1]
		<i>Ctrl-R = Refusal</i>	[If TOTAL_CU ≥ ITERATION, goto CU_LISTING] [goto TENURE_1]

- **SPECIAL INSTRUCTIONS**

1. Display the household roster for household members (HH_MEM = 1). Gray all household members with PERCUNUM ≠ ITERATION. Fill REL, SEX, AWAY_COL, and HH_MEM with the descriptions from Attachment G.

2. If $\text{SINGLE_OTHER} = 1$, set $\text{DEPENDENT} = \text{DEPENDENT} + 1$.
 3. If $\text{DEPENDENT} \geq 2$, set $\text{INCT_CU} = \text{INCT_CU} + 1$ and store code 12 in element [12] of DISCREPANCY array.
 4. Set $\text{ITERATION} = \text{ITERATION} + 1$.
-

NEW SCREEN

- **Universe** - CU_LISTING = 1 and COUNT > 1

Line No.	Name	Relationship	Age	Sex	Away at college	HH member	CU number
[Fill: MEMBNO]	[Fill: FNAME LNAME]	[Fil: REL]	[Fill: AGE]	[Fill: SEX]	[Fill: AWAY_COL]	[Fill: HH_MEM]	[Fill: PERCUNUM]
:	:	:	:	:	:	:	.

Are ♦Read above names that are highlighted♦ all related by blood, marriage, adoption, or other legal arrangement?

1. Yes
2. No

<u>Name</u>	<u>Description</u>	<u>Value</u>	<u>Skip</u>
MULTI_RELATED	Multi person CU - related	1	[If TOTAL_CU ≥ ITERATION, goto CU_LISTING [goto TENURE_1]
		2	[goto MULTI_HOUSING]
		<i>Ctrl-D = Don't know</i>	[If TOTAL_CU ≥ ITERATION, goto CU_LISTING [goto TENURE_1]
		<i>Ctrl-R = Refusal</i>	[If TOTAL_CU ≥ ITERATION, goto CU_LISTING [goto TENURE_1]

- SPECIAL INSTRUCTIONS

1. Display the household roster for household members (HH_MEM = 1). Gray all household members with PERCUNUM ≠ ITERATION. Fill REL, SEX, AWAY_COL, and HH_MEM with the descriptions from Attachment G.
2. If MULTI_RELATED = 1, 'Don't know,' or 'Refusal,' set ITERATION =

ITERATION + 1.

3. If MULTI_RELATED = 2, set INDEPENDENT = 0.
-

NEW SCREEN

- **Universe** - MULTI_RELATED = 2

Line No.	Name	Relationship	Age	Sex	Away at college	HH member	CU number
[Fill: MEMBNO]	[Fill: FNAME LNAME]	[Fil: REL]	[Fill: AGE]	[Fill: SEX]	[Fill: AWAY_COL]	[Fill: HH_MEM]	[Fill: PERCUNUM]
.
.

Does this CU, ♦Read above names that are highlighted♦, include a person or a group of persons who are independent of the other persons in this CU for payment of housing expenses?

By independent I mean that this person or group of persons neither receives money from the other CU members for housing expenses nor pays for any of the other CU members' housing expenses.

1. Yes
2. No

<u>Name</u>	<u>Description</u>	<u>Value</u>	<u>Skip</u>
MULTI_HOUSING	Multi person CU - housing expenses	1	[goto MUTLI_FOOD]
		2	[goto MUTLI_FOOD]
		<i>Ctrl-D = Don't know</i>	[goto MUTLI_FOOD]
		<i>Ctrl-R = Refusal</i>	[goto MUTLI_FOOD]

- **SPECIAL INSTRUCTIONS**

1. Display the household roster for household members (HH_MEM = 1). Gray all household members with PERCUNUM ≠ ITERATION. Fill REL, SEX, AWAY_COL, and HH_MEM with the descriptions from Attachment G.]

2. If MULTI_HOUSING = 1, set INDEPENDENT = INDEPENDENT + 1.
-

NEW SCREEN

- **Universe** - Any valid value in MULTI_HOUSING

Line No.	Name	Relationship	Age	Sex	Away at college	HH member	CU number
[Fill: MEMBNO]	[Fill: FNAME LNAME]	[Fil: REL]	[Fill: AGE]	[Fill: SEX]	[Fill: AWAY_COL]	[Fill: HH_MEM]	[Fill: PERCUNUM]
.
.

Does this CU, ♦Read above names that are highlighted♦, include a person or a group of persons who are independent of the other persons in this CU for payment of food expenses?

By independent I mean that this person or group of persons neither receives money from the other CU members for food expenses nor pays for any of the other CU members' food expenses.

1. Yes
2. No

Name	Description	Value	Skip
MULTI_FOOD	Multi person CU - food expenses	1	[goto MUTLI_OTHER]
		2	[goto MUTLI_OTHER]
		<i>Ctrl-D = Don't know</i>	[goto MUTLI_OTHER]
		<i>Ctrl-R = Refusal</i>	[goto MUTLI_OTHER]

- **SPECIAL INSTRUCTIONS**

1. Display the household roster for household members (HH_MEM = 1). Gray all household members with PERCUNUM ≠ ITERATION. Fill REL, SEX, AWAY_COL, and HH_MEM with the descriptions from Attachment G.
2. If MULTI_FOOD = 1, set INDEPENDENT = INDEPENDENT + 1.



NEW SCREEN

- **Universe** - Any valid value in MULTI_FOOD

Line No.	Name	Relationship	Age	Sex	Away at college	HH member	CU number
[Fill: MEMBNO]	[Fill: FNAME LNAME]	[Fill: REL]	[Fill: AGE]	[Fill: SEX]	[Fill: AWAY_COL]	[Fill: HH_MEM]	[Fill: PERCUNUM]
:	:	:	:	:	:	:	:
:	:	:	:	:	:	:	:

Does this CU, ♦Read above names that are highlighted♦, include a person or a group of persons who are independent of the other persons in this CU for payment of other living expenses, such as clothing, transportation?

By independent I mean that this person or group of persons neither receives money from the other CU members for other living expenses nor pays for any of the other CU members' other living expenses.

1. Yes
2. No

<u>Name</u>	<u>Description</u>	<u>Value</u>	<u>Skip</u>
MULTI_OTHER	Multi person CU - other expenses	1	[If TOTAL_CU ≥ ITERATION, goto CU_LISTING [goto TENURE_1]
		2	[If TOTAL_CU ≥ ITERATION, goto CU_LISTING [goto TENURE_1]
		<i>Ctrl-D = Don't know</i>	[If TOTAL_CU ≥ ITERATION, goto CU_LISTING [goto TENURE_1]
		<i>Ctrl-R = Refusal</i>	[If TOTAL_CU ≥ ITERATION, goto CU_LISTING [goto TENURE_1]

- SPECIAL INSTRUCTIONS

1. Display the household roster for household members ($HH_MEM = 1$). Gray all household members with $PERCUNUM \neq ITERATION$. Fill REL, SEX, AWAY_COL, and HH_MEM with the descriptions from Attachment G.
 2. $MULTI_OTHER = 1$, set $INDEPENDENT = INDEPENDENT + 1$.
 3. If $INDEPENDENT \geq 2$, set $INCT_CU = INCT_CU + 1$ and store code 12 in element [12] of DISCREPANCY array.
 3. Set $ITERATION = ITERATION + 1$.
-

NEW SCREEN

- **UNIVERSE** - (SURVEY_1 = 1 and (INCT_CNT ≥ 1 or MISS_CNT ≥ 1 or NROSIZE = 1)) or (SINGLE_RELATED = 1 and TOTAL_CU < ITERATION) or (Any valid value in SINGLE_OTHER and TOTAL_CU < ITERATION) or (MULTI_RELATED = 1, D, or R and TOTAL_CU < ITERATION) or (Any valid value in MULTI_OTHER and TOTAL_CU < ITERATION)

Are these living quarters presently used as student housing by a college or university?
1. Yes 2. No

<u>Name</u>	<u>Description</u>	<u>Value</u>	<u>Skip</u>
TENURE_1	Tenure - student housing	1	[If PERCUNUM = 1 for LNO = RIRESP and (LENGHT_H = D or LENGHT_M = <0 - 90>) {and SURVEY_SET = 1} go to {SURVEY_2 SURVEY_1_1}] [[If PERCUNUM = 1 for LNO = RIRESP and (LENGHT_H = D or LENGHT_M = <0 - 90>) and SURVEY_SET = 2 go to SURVEY_2_1] [If PERCUNUM = 1 for LNO = RIRESP and (LENGHT_H = D or LENGHT_M = <0 - 90>) and SURVEY_SET = 3 go to SURVEY_3_1}] [goto THANK_YOU]
		2	[If PERCUNUM = 1 for LNO = RIRESP go to TENURE_2] [goto THANK_YOU]
	<i>Ctrl-D = Don't know</i>		[If PERCUNUM = 1 for LNO = RIRESP go to TENURE_2] [goto THANK_YOU]
	<i>Ctrl-R = Refused</i>		[If PERCUNUM = 1 for LNO = RIRESP go to TENURE_2] [goto THANK_YOU]



NEW SCREEN

- **UNIVERSE** - ((TENURE_1 = 2, D, or R) and PERCUNUM = 1 for LNO = RIRESP)

Do you own this home?
1. Yes 2. No

<u>Name</u>	<u>Description</u>	<u>Value</u>	<u>Skip</u>
TENURE_2	Tenure - owned or bought	1	[If (LENGHT_H = D or LENGHT_M = <0 - 90>) {and SURVEY_SET = 1} go to { SURVEY_2 SURVEY_1_1}] [[If (LENGHT_H = D or LENGHT_M = <0 - 90>) and SURVEY_SET = 2 go to SURVEY_2_1] [If (LENGHT_H = D or LENGHT_M = <0 - 90>) and SURVEY_SET = 3 go to SURVEY_3_1]] [goto THANK_YOU]
		2	[goto TENURE_3]
	<i>Ctrl-D = Don't know</i>		[goto TENURE_3]
	<i>Ctrl-R = Refused</i>		[goto TENURE_3]

NEW SCREEN

- **UNIVERSE** - TENURE_2 = 2, D, or R

Do you or any member of your CU pay rent for these living quarters?

- | |
|--------|
| 1. Yes |
| 2. No |

<u>Name</u>	<u>Description</u>	<u>Value</u>	<u>Skip</u>
TENURE_3	Tenure - pay rent	1	[goto TENURE_4]
		2	[goto TENURE_4]
		<i>Ctrl-D = Don't know</i>	[goto TENURE_4]
		<i>Ctrl-R = Refused</i>	[goto TENURE_4]

NEW SCREEN

- **UNIVERSE** - TENURE_3 = 1, 2, D or R

Did you or any member of your CU receive any reduced or free rent for this unit as a form of pay since the 1 st of the [Fill: REF_MONTH]?
<ol style="list-style-type: none"> 1. Yes 2. No

<u>Name</u>	<u>Description</u>	<u>Value</u>	<u>Skip</u>
TENURE_4	Tenure - reduced or free1 rent		[If (LENGHT_H = D or LENGHT_M) = <0 - 90>) {and SURVEY_SET = 1 } go to {SURVEY_2 SURVEY_1_1}] {{If (LENGHT_H = D or LENGHT_M) = <0 - 90>) and SURVEY_SET = 2 go to SURVEY_2_1] [If (LENGHT_H = D or LENGHT_M) = <0 - 90>) and SURVEY_SET = 3 go to SURVEY_3_1]} [goto THANK_YOU]
		2	[If (LENGHT_H = D or LENGHT_M) = <0 - 90>) {and SURVEY_SET = 1 } go to {SURVEY_2 SURVEY_1_1}] {{If (LENGHT_H = D or LENGHT_M) = <0 - 90>) and SURVEY_SET = 2 go to SURVEY_2_1] [If (LENGHT_H = D or LENGHT_M) = <0 - 90>) and SURVEY_SET = 3 go to SURVEY_3_1]} [goto THANK_YOU]

Ctrl-D = Don't [If (LENGHT_H = D or

<u>Name</u>	<u>Description</u>	<u>Value</u>	<u>Skip</u>
		<i>know</i>	LENGHT_M) = <0 - 90>) {and SURVEY_SET = 1 } go to {SURVEY_2 SURVEY_1_1}} {[If (LENGHT_H = D or LENGHT_M) = <0 - 90>) and SURVEY_SET = 2 go to SURVEY_2_1] [If (LENGHT_H = D or LENGHT_M) = <0 - 90>) and SURVEY_SET = 3 go to SURVEY_3_1]] [goto THANK_YOU]
		<i>Ctrl-R = Refused</i>	[If (LENGHT_H = D or LENGHT_M) = <0 - 90>) {and SURVEY_SET = 1 } go to {SURVEY_2 SURVEY_1_1}} {[If (LENGHT_H = D or LENGHT_M) = <0 - 90>) and SURVEY_SET = 2 go to SURVEY_2_1] [If (LENGHT_H = D or LENGHT_M) = <0 - 90>) and SURVEY_SET = 3 go to SURVEY_3_1]] [goto THANK_YOU]

NEW SCREEN

~~UNIVERSE~~ (TENURE_1 = 1 and PERCUNUM = 1 for LNO = RIRESP and (LENGHT_H = D or LENGHT_M = <0-90>)) or
 (TENURE_2 = 1 and (LENGHT_H = D or LENGHT_M = <0-90>)) or
 (Any valid value in TENURE_4 and (LENGHT_H = D or LENGHT_M = <0-90>))

Did the interviewer ask questions about medical payments paid by you or any member of your CU since the 1st of [Fill: REF_MONTH]?

By payments I mean any expenses paid by you or any member of your CU directly to a medical provider by cash, check, or credit card for a medical service or item.

1. Yes
2. No

<u>Name</u>	<u>Description</u>	<u>Value</u>	<u>Skip</u>
SURVEY_2	CE survey question - medical payments	1	[goto SURVEY_3]
		2	[goto SURVEY_3]
		<i>Ctrl-D = Don't know</i>	[goto SURVEY_3]

- SPECIAL INSTRUCTIONS

If SURVEY_2 = 2, store code 8 in element [8] of DISCREPANCY array.

~~NEW SCREEN~~

~~— **UNIVERSE** — Any valid value in SURVEY_2~~

Did the interviewer ask questions about medical reimbursements made to you or any member of your CU since the 1st of [Fill: REF_MONTH]?

By reimbursements I mean money received by you or any member of your CU from an insurance company, medical care provider, or non CU member, for medical expenses which you previously paid or will pay.

1. Yes

2. No

<u>Name</u>	<u>Description</u>	<u>Value</u>	<u>Skip</u>
SURVEY_3	CE survey question — medical reimbursements	1	{goto SURVEY_4}
		2	{goto SURVEY_4}
		<i>Ctrl-D = Don't know</i>	{goto SURVEY_4}

• SPECIAL INSTRUCTIONS

If SURVEY_2 = 2, store code 8 in element [8] of DISCREPANCY array.

NEW SCREEN

~~— **UNIVERSE** — Any valid value in SURVEY_3~~

<p>Did the interviewer ask questions about trips and vacations taken by you or any member of your CU since the 1st of [Fill: REF_MONTH]?</p> <p>These trips or vacations include overnight or longer trips to visit relatives or friends, for business, or for recreation.</p> <p>1. Yes 2. No</p>

Name	Description	Value	Skip
SURVEY_4	CE survey question - trips and vacations	1	[If INTNMBR = 1 goto SURVEY_5] [If INTNMBR = 2 or 5 goto SURVEY_6] [goto THANK_YOU]
		2	[If INTNMBR = 1 goto SURVEY_5] [If INTNMBR = 2 or 5 goto SURVEY_6] [goto THANK_YOU]
		<i>Ctrl-D = Don't know</i>	[If INTNMBR = 1 goto SURVEY_5] [If INTNMBR = 2 or 5 goto SURVEY_6] [goto THANK_YOU]

• **SPECIAL INSTRUCTIONS**

If SURVEY_2 = 2, store code 8 in element [8] of DISCREPANCY array.

{NEW SCREEN

- **UNIVERSE** - (TENURE_1 = 1 and PERCUNUM = 1 for LNO = RIRESP and (LENGHT_H = D or LENGHT_M = <0 - 90>) and SURVEY_SET = 1) or
 (TENURE_2 = 1 and (LENGHT_H = D or LENGHT_M = <0 - 90>) and SURVEY_SET = 1) or
 (Any valid value in TENURE_4 and (LENGHT_H = D or LENGHT_M = <0 - 90>) and SURVEY_SET = 1)

Did the interviewer ask questions about rented or owned living quarters and payments towards these living quarters?

These include questions about any rental payments, mortgages, or home equity loans paid or obtained by you or any member of your CU since the 1st of [FILL: REF_MONTH].

1. Yes
2. No

<u>Name</u>	<u>Description</u>	<u>Value</u>	<u>Skip</u>
SURVEY_1_1	CE survey question - rental or housing expenses	1	[goto SURVEY_1_2]
		2	[goto SURVEY_1_2]
		<i>Ctrl-D = Don't know</i>	[goto SURVEY_1_2]

- **SPECIAL INSTRUCTIONS**

If SURVEY_1_1 = 2, store code 8 in element [8] of DISCREPANCY array.}

{NEW SCREEN

- **UNIVERSE** - Any valid value in SURVEY_1_1

<p>Did the interviewer ask questions about expenses for home furnishings and related household items?</p> <p>These include questions about purchases of any furniture, infant equipment, outdoor equipment, decorative items, dishes, flatware, glassware, cookware, linens, or floor and window coverings made by you or any member of your CU since the 1st of [FILL: REF_MONTH] for your CU or for someone outside of your CU.</p>
<ol style="list-style-type: none"> 1. Yes 2. No

<u>Name</u>	<u>Description</u>	<u>Value</u>	<u>Skip</u>
SURVEY_1_2	CE survey question - home furnishings	1	[goto SURVEY_1_3]
		2	[goto SURVEY_1_3]
		<i>Ctrl-D = Don't know</i>	[goto SURVEY_1_3]

- **SPECIAL INSTRUCTIONS**

If SURVEY_1_2 = 2, store code 8 in element [8] of DISCREPANCY array.}

{NEW SCREEN

- **UNIVERSE** - Any valid value in SURVEY_1_2

Did the interviewer ask questions about non-health insurance policies?

These include questions about purchases of or payments for any life insurance, homeowner's or renter's insurance, or automobile or other vehicle insurance made by you or any member of your CE since the 1st of [FILL: REF_MONTH].

1. Yes
2. No

<u>Name</u>	<u>Description</u>	<u>Value</u>	<u>Skip</u>
SURVEY_1_3	CE survey question - insurance	1	{If INTNMBR = 1 goto SURVEY_5} [If INTNMBR = 2 or 5 goto SURVEY_6] [goto THANK_YOU]
		2	{If INTNMBR = 1 goto SURVEY_5} [If INTNMBR = 2 or 5 goto SURVEY_6] [goto THANK_YOU]
		<i>Ctrl-D = Don't know</i>	{If INTNMBR = 1 goto SURVEY_5} [If INTNMBR = 2 or 5 goto SURVEY_6] [goto THANK_YOU]

- **SPECIAL INSTRUCTIONS**

If SURVEY_1_3 = 2, store code 8 in element [8] of DISCREPANCY array.}

{NEW SCREEN

- **UNIVERSE** - (TENURE_1 = 1 and PERCUNUM = 1 for LNO = RIRESP and (LENGHT_H = D or LENGHT_M = <0 - 90>) and SURVEY_SET = 2) or
 (TENURE_2 = 1 and (LENGHT_H = D or LENGHT_M = <0 - 90>) and SURVEY_SET = 2) or
 (Any valid value in TENURE_4 and (LENGHT_H = D or LENGHT_M = <0 - 90>) and SURVEY_SET = 2)

Did the interviewer ask questions about telephone bills?

These include questions about any bills received and/or paid by you or any member of your CU since the 1st of [FILL: REF_MONTH] for telephone or pager services..

1. Yes
2. No

<u>Name</u>	<u>Description</u>	<u>Value</u>	<u>Skip</u>
SURVEY_2_1	CE survey question - telephone expenses	1	[goto SURVEY_2_2]
		2	[goto SURVEY_2_2]
		<i>Ctrl-D = Don't know</i>	[goto SURVEY_2_2]

- **SPECIAL INSTRUCTIONS**

If SURVEY_2_1 = 2, store code 8 in element [8] of DISCREPANCY array.}

{NEW SCREEN

- **UNIVERSE** - Any valid value in SURVEY_2_1

Did the interviewer ask questions about clothing purchases?

These include questions about purchases of any infant, child, or adult clothes, outerwear, undergarments, nightwear, sportswear, or footwear made by you or any member of your CU since the 1st of [FILL: REF_MONTH] for members of your CU or for someone outside of your CU.

1. Yes
2. No

<u>Name</u>	<u>Description</u>	<u>Value</u>	<u>Skip</u>
SURVEY_2_2	CE survey question - clothing	1	[goto SURVEY_2_3]
		2	[goto SURVEY_2_3]
		<i>Ctrl-D = Don't know</i>	[goto SURVEY_2_3]

- **SPECIAL INSTRUCTIONS**

If SURVEY_2_2 = 2, store code 8 in element [8] of DISCREPANCY array.}

{NEW SCREEN

- **UNIVERSE** - Any valid value in SURVEY_2_2

<p>Did the interviewer ask questions about expenses for subscriptions, memberships, books, and entertainment?</p> <p>These include questions about subscriptions for newspapers or magazines, memberships to clubs or organizations, fees for participating in sports, or admissions to spectator sports, performances, or entertainment activities paid by you or any member of your CE since the 1st of [FILL: REF_MONTH].</p>
<ol style="list-style-type: none"> 1. Yes 2. No

<u>Name</u>	<u>Description</u>	<u>Value</u>	<u>Skip</u>
SURVEY_2_3	CE survey question - subscriptions, memberships, books and entertainment	1	{If INTNMBR = 1 goto SURVEY_5} [If INTNMBR = 2 or 5 goto SURVEY_6] [goto THANK_YOU]
		2	{If INTNMBR = 1 goto SURVEY_5} [If INTNMBR = 2 or 5 goto SURVEY_6] [goto THANK_YOU]
		<i>Ctrl-D = Don't know</i>	{If INTNMBR = 1 goto SURVEY_5} [If INTNMBR = 2 or 5 goto SURVEY_6] [goto THANK_YOU]

- **SPECIAL INSTRUCTIONS**

If SURVEY_2_3 = 2, store code 8 in element [8] of DISCREPANCY array.}

{NEW SCREEN

- **UNIVERSE** - (TENURE_1 = 1 and PERCUNUM = 1 for LNO = RIRESP and (LENGHT_H = D or LENGHT_M = <0 - 90>) and SURVEY_SET = 3) or
 (TENURE_2 = 1 and (LENGHT_H = D or LENGHT_M = <0 - 90>) and SURVEY_SET = 3) or
 (Any valid value in TENURE_4 and (LENGHT_H = D or LENGHT_M = <0 - 90>) and SURVEY_SET = 3)

Did the interviewer ask questions about utility bills?

These include questions about any bills received and/or paid by you or any member of your CU since the 1st of [FILL: REF_MONTH] for any utilities, fuels or services such as electricity, natural gas, fuel oil, water, sewerage maintenance or trash collection.

1. Yes
2. No

<u>Name</u>	<u>Description</u>	<u>Value</u>	<u>Skip</u>
SURVEY_3_1	CE survey question - utilities	1	[goto SURVEY_3_2]
		2	[goto SURVEY_3_2]
		<i>Ctrl-D = Don't know</i>	[goto SURVEY_3_2]

- **SPECIAL INSTRUCTIONS**

If SURVEY_3_1 = 2, store code 8 in element [8] of DISCREPANCY array.}

{NEW SCREEN

- **UNIVERSE** - Any valid value in SURVEY_3_1

<p>Did the interviewer ask questions about owned vehicles and expenses for vehicle services, parts, and equipment?</p> <p>These include questions about any vehicles purchased or acquired by you or any member of your CU since the 1st of [FILL: REF_MONTH], as well as any expenses for vehicle maintenance or repair during this time period.</p>
<ol style="list-style-type: none"> 1. Yes 2. No

<u>Name</u>	<u>Description</u>	<u>Value</u>	<u>Skip</u>
SURVEY_3_2	CE survey question - vehicles and vehicle and maintenance	1	[goto SURVEY_3_3]
		2	[goto SURVEY_3_3]
		<i>Ctrl-D = Don't know</i>	[goto SURVEY_3_3]

- **SPECIAL INSTRUCTIONS**

If SURVEY_3_2 = 2, store code 8 in element [8] of DISCREPANCY array.}

{NEW SCREEN

- **UNIVERSE** - Any valid value in SURVEY_3_2

Did the interviewer ask questions about trips and vacations?

These include questions about trips to visit relatives or friends, for business or for recreations, taken by you or any member of your CE since the 1st of [FILL: REF_MONTH].

1. Yes
2. No

<u>Name</u>	<u>Description</u>	<u>Value</u>	<u>Skip</u>
SURVEY_3_3	CE survey question - trips	1	[If INTNMBR = 1 goto SURVEY_5] [If INTNMBR = 2 or 5 goto SURVEY_6] [goto THANK_YOU]
		2	[If INTNMBR = 1 goto SURVEY_5] [If INTNMBR = 2 or 5 goto SURVEY_6] [goto THANK_YOU]
		<i>Ctrl-D = Don't know</i>	[If INTNMBR = 1 goto SURVEY_5] [If INTNMBR = 2 or 5 goto SURVEY_6] [goto THANK_YOU]

- **SPECIAL INSTRUCTIONS**

If SURVEY_3_3 = 2, store code 8 in element [8] of DISCREPANCY array.}

{NEW SCREEN

~~— **UNIVERSE** — (Any valid values in {SURVEY_4 SURVEY_1_3} and INTNMBR = 1) {or
 (Any valid values in SURVEY_2_3 and INTNMBR = 1) or
 (Any valid values in SURVEY_3_3 and INTNMBR = 1)}~~

Did the interviewer read a list of income categories and ask questions about which category represented the total combined income of this CU for the past 12 months?

Income includes money from jobs, net income from business, farm or rent, pensions, dividends, interest, social security payments, and any other money income received by all CU members 14 years of age or older.

1. Yes
2. No

Name	Description	Value	Skip
SURVEY_5	CE survey question - income	1	[goto THANK_YOU]
		2	[goto THANK_YOU]
		<i>Ctrl-D = Don't know</i>	[goto THANK_YOU]

- **SPECIAL INSTRUCTIONS**

If SURVEY_5 = 2, store code 8 in element [8] of DISCREPANCY array.}

NEW SCREEN

- **UNIVERSE** - (Any valid value in {~~SURVEY_4~~ SURVEY_1_3} and INTNMBR = 2 or 5) {or
(Any valid values in SURVEY_2_3 and INTNMBR = 2 or 5) or
(Any valid values in SURVEY_3_3 and INTNMBR = 2 or 5)}

Did the interviewer ask questions about work done during the last 12 months by you or any member of your CU?

Types of questions asked include number of weeks worked, number of hours per week usually worked, and job category.

1. Yes
2. No

<u>Name</u>	<u>Description</u>	<u>Value</u>	<u>Skip</u>
SURVEY_6	CE survey question - work	1	[goto THANK_YOU]
		2	[goto THANK_YOU]
		<i>Ctrl-D = Don't know</i>	[goto THANK_YOU]

- **SPECIAL INSTRUCTIONS**

If SURVEY_6 = 2, store code 8 in element [8] of DISCREPANCY array.

XV. Back Specifications

The screens for the back of the instrument appear in this section. A list of the reinterview disposition (RI_DISP), outcome (OUTCOME) and action (ACTION) codes appear in Attachment F, CEQ Reinterview Disposition, Outcome, and Action Codes. The reinterview instrument sets the reinterview disposition and outcome codes. Case Management assigns the action code based on the reinterview outcome code.

- **UNIVERSE** - (PROX_C = 2 and (HELLO_PC = 4 or HELLO_TC = 3 or 5)) or
 (HELLO_TC = 3 or 5 and RPROXY_A = 0) or
 (STATUS = 1 or D) or
 (Any valid value in STAT_PROBE) or
 (Any valid value in STAT_PROB2) or
 (PROX_N = 2 and (HELLO_PN = 4 or HELLO_TN = 4) or
 (HELLO_PC = 4 and RPROXY_A = 0) or
 (ROSTER_3 = 2 or D or R and LENGTH_H empty and LENGTH_M empty)) or
 (Any valid value in ROSTER_4 and LENGTH_H empty and LENGTH_M empty) or
 (STAT_VER = 2) or
 (SPEAKTO2 = 2) or
 (VACANT2 = 1) or
 (TENURE_1 = 1 and (PERCUNUM > 1 or blank for LNO = RIRESP or
 (LENGTH_H empty and LENGTH_M empty))) or
 (TENURE_1 = 2 and PERCUNUM > 1 or blank for LNO = RIRESP) or
 (TENURE_2 = 1 and LENGTH_H empty and LENGTH_M empty) or
 (Any valid value in TENURE_4 and LENGTH_H empty and LENGTH_M empty)
- or
- (Any valid value in {SURVEY_4 SURVEY_1_3} and INTNMBR = 1, 3, or 4) or
 {(Any valid value in SURVEY_2_3 and INTNMBR = 1, 3, or 4) or
 (Any valid value in SURVEY_3_3} and INTNMBR = 1, 3, or 4) or}
 {(Any valid value in SURVEY_5) or }
 (Any valid value in SURVEY_6)

Thank you for your cooperation. You've been very helpful.

◆ Enter 1 to continue.

1. Continue

<u>Name</u>	<u>Description</u>	<u>Value</u>	<u>Skip</u>
THANK_YOU	Thank You	1	[If (HELLO_TC = 5 and RPROXY_A = 0) or (HELLO_PN = 4 and PROX_N = 2) or

<u>Name</u>	<u>Description</u>	<u>Value</u>	<u>Skip</u>
			(HELLO_PC = 4 and RPROXY_A = 0) or (HELLO_TN = 4 and PROX_N = 2) goto STATUS_RI] [goto RI_OUTCM]

UNIVERSE - (VERTYPEA = 2) or
 (RI_OUTCM = 1 and ORIOUT_RSLT = INT, B1, B2, C1, C2 or VINT and
 BYOBS = 0, blank or 2) or
 (RI_OUTCM = 2 and ORIOUT_RSLT = INT) or
 (NONINT = 4) or
 (TYPEA = <1-9>) or
 (TYPEB = <1-9>) or
 (TYPEB_ALT = <1-11>) or
 (TYPEC = <1-7>) or
 (MISC_B = <1-4>) or
 (MISC_C = <1-4>) or
 (MISC_VINT = 1 or 2) or
 (MISC_BVINT = <1-5>) or
 (MISC_CVINT = <1-5>) or

[Fill: "Your reinterview indicates the following discrepancies:"
 code and description of each code listed in DISCREPANCY array /
 "Your reinterview did not indicate any discrepancies."]

◆ Do you suspect falsification?

1. Yes
2. No
3. Unable to determine

Name	Description	Value	Skip
FALSIF	Falsification suspected?	1	[If RI_OUTCM=3 goto RINOTES_PRE] [If RI_OUTCM=2 goto RINOTES_PRE] [If RI_OUTCM=1 and all elements in DISCREPANCY array blank goto NO_DISCREP] [If RI_OUTCM=1 and only one element in DISCREPANCY array ≥ 1 goto RINOTES_PRE] [If RI_OUTCM=1 and two or more elements in DISCREPANCY array ≥ 1 goto SF_RIDISP]
		2	[If RI_OUTCM=3 goto RINOTES_PRE] [If RI_OUTCM=2 and ORIOUT_RSLT=A, B1, C1, B2, C2 or VINT goto RINOTES_PRE] [If RI_OUTCM=1 and all elements in DISCREPANCY array blank goto RINOTES_PRE]

<u>Name</u>	<u>Description</u>	<u>Value</u>	<u>Skip</u>
			[If RI_OUTCM=1 and DISCREPANCY [6] = 6 and all other elements in DISCREPANCY array blank goto RINOTES_PRE] [goto DISCREP_NOTES]
		3	[If RI_OUTCM=3 goto RINOTES_PRE] [If RI_OUTCM=2 and ORIOUT_RSLT=A, B1, C1, B2, C2 or VINT goto RINOTES_PRE] [If RI_OUTCM=1 and all elements in DISCREPANCY array blank goto RINOTES_PRE] [If RI_OUTCM=1 and DISCREPANCY [6] = 6 and all other elements in DISCREPANCY array blank goto RINOTES_PRE] [If RI_OUTCM=1 and only one element in DISCREPANCY array ≥ 1 goto RINOTES_PRE] [If RI_OUTCM=2 and ORIOUT_RSLT=INT and DISCREPANCY [2] = 2 and all other elements in DISCREPANCY array blank goto RINOTES_PRE] [goto NSF_RIDISP]

• FILL INSTRUCTIONS

If DISCREPANCY array contains one or more codes, fill “Your reinterview indicates the following discrepancies:” and the code and description of each code listed in DISCREPANCY array with the code’s description from Attachment I.

Else fill “Your reinterview did not indicate any discrepancies.”

• SPECIAL INSTRUCTIONS

Coding Cases Verified as Correct:

If FALSIF = 2 or 3 and RI_OUTCM = 1 and all elements in DISCREPANCY array blank, set OUTCOME = 201 and RI_DISP = 001.

If FALSIF = 2 or 3 and RI_OUTCM = 1 and DISCREPANCY[6] = 6 and all other elements in DISCREPANCY array blank, set OUTCOME = 201 and RI_DISP = 001

Coding Original Type A Noninterview Cases:

If FALSIF = 1 and RI_OUTCM = 2 and ORIOUT_RSLT = A, set OUTCOME = 301 and RI_DISP = 103.

If FALSIF = 2 or 3 and RI_OUTCM = 2 and ORIOUT_RSLT = A, set OUTCOME = 301 and RI_DISP = 058.

Coding Cases Verified as Reinterview Noninterview:

If FALSIF = 1 and NONINT = 4, set OUTCOME = 360 and RI_DISP = 085.

If FALSIF = 1 and TYPEA = 1, set OUTCOME = 214 and RI_DISP = 105.

If FALSIF = 1 and TYPEA = 2, set OUTCOME = 214 and RI_DISP = 067.

If FALSIF = 1 and TYPEA = 3, set OUTCOME = 216 and RI_DISP = 068.

If FALSIF = 1 and TYPEA = 4, set OUTCOME = 217 and RI_DISP = 069.

If FALSIF = 1 and TYPEA = 5, set OUTCOME = 218 and RI_DISP = 086.

If FALSIF = 1 and TYPEA = 6, set OUTCOME = 213 and RI_DISP = 087.

If FALSIF = 1 and TYPEA = 7, set OUTCOME = 219 and RI_DISP = 090.

If FALSIF = 1 and TYPEA = 8, set OUTCOME = 215 and RI_DISP = 089.

If FALSIF = 1 and TYPEA = 9, set OUTCOME = 219 and RI_DISP = 090.

If FALSIF = 1 and TYPEB = 1, set OUTCOME = 226 and RI_DISP = 071.

If FALSIF = 1 and TYPEB = 2, set OUTCOME = 227 and RI_DISP = 073.

If FALSIF = 1 and TYPEB = 3, set OUTCOME = 230 and RI_DISP = 074.

If FALSIF = 1 and TYPEB = 4, set OUTCOME = 231 and RI_DISP = 075.

If FALSIF = 1 and TYPEB = 5, set OUTCOME = 228 and RI_DISP = 077.

If FALSIF = 1 and TYPEB = 6, set OUTCOME = 234 and RI_DISP = 076.

If FALSIF = 1 and TYPEB = 7, set OUTCOME = 224 and RI_DISP = 091.

If FALSIF = 1 and TYPEB = 8, set OUTCOME = 225 and RI_DISP = 092.

If FALSIF = 1 and TYPEB = 9, set OUTCOME = 233 and RI_DISP = 094.

If FALSIF = 1 and TYPEB_ALT = 1, set OUTCOME = 226 and RI_DISP = 071.

If FALSIF = 1 and TYPEB_ALT = 2, set OUTCOME = 326 and RI_DISP = 072.

If FALSIF = 1 and TYPEB_ALT = 3, set OUTCOME = 227 and RI_DISP = 073.

If FALSIF = 1 and TYPEB_ALT = 4, set OUTCOME = 230 and RI_DISP = 074.

If FALSIF = 1 and TYPEB_ALT = 5, set OUTCOME = 231 and RI_DISP = 075.

If FALSIF = 1 and TYPEB_ALT = 6, set OUTCOME = 228 and RI_DISP = 077.

If FALSIF = 1 and TYPEB_ALT = 7, set OUTCOME = 234 and RI_DISP = 076.

If FALSIF = 1 and TYPEB_ALT = 8, set OUTCOME = 224 and RI_DISP = 091.

If FALSIF = 1 and TYPEB_ALT = 9, set OUTCOME = 225 and RI_DISP = 092.

If FALSIF = 1 and TYPEB_ALT = 10, set OUTCOME = 225 and RI_DISP = 093.

If FALSIF = 1 and TYPEB_ALT = 11, set OUTCOME = 233 and RI_DISP = 094.

If FALSIF = 1 and TYPEC = 1, set OUTCOME = 240 and RI_DISP = 078.

If FALSIF = 1 and TYPEC = 2, set OUTCOME = 241 and RI_DISP = 079.

If FALSIF = 1 and TYPEC = 3, set OUTCOME = 243 and RI_DISP = 080.

If FALSIF = 1 and TYPEC = 4, set OUTCOME = 245 and RI_DISP = 081.

If FALSIF = 1 and TYPEC = 5, set OUTCOME = 250 and RI_DISP = 083.

If FALSIF = 1 and TYPEC = 6, set OUTCOME = 251 and RI_DISP = 084.

If FALSIF = 1 and TYPEC = 7, set OUTCOME = 248 and RI_DISP = 095.

If FALSIF = 2 or 3 and NONINT = 4, set OUTCOME = 360 and RI_DISP = 032

If FALSIF = 2 or 3 and TYPEA = 1, set OUTCOME = 214 and RI_DISP = 003.

If FALSIF = 2 or 3 and TYPEA = 2, set OUTCOME = 214 and RI_DISP = 013.

If FALSIF = 2 or 3 and TYPEA = 3, set OUTCOME = 216 and RI_DISP = 014.

If FALSIF = 2 or 3 and TYPEA = 4, set OUTCOME = 217 and RI_DISP = 015.

If FALSIF = 2 or 3 and TYPEA = 5, set OUTCOME = 218 and RI_DISP = 033.

If FALSIF = 2 or 3 and TYPEA = 6, set OUTCOME = 213 and RI_DISP = 034.

If FALSIF = 2 or 3 and TYPEA = 7, set OUTCOME = 218 and RI_DISP = 035.

If FALSIF = 2 or 3 and TYPEA = 8, set OUTCOME = 215 and RI_DISP = 036.

If FALSIF = 2 or 3 and TYPEA = 9, set OUTCOME = 219 and RI_DISP = 037.

If FALSIF = 2 or 3 and TYPEB = 1, set OUTCOME = 226 and RI_DISP = 017.

If FALSIF = 2 or 3 and TYPEB = 2, set OUTCOME = 227 and RI_DISP = 019.

If FALSIF = 2 or 3 and TYPEB = 3, set OUTCOME = 230 and RI_DISP = 020.

If FALSIF = 2 or 3 and TYPEB = 4, set OUTCOME = 231 and RI_DISP = 021.

If FALSIF = 2 or 3 and TYPEB = 5, set OUTCOME = 228 and RI_DISP = 023.

If FALSIF = 2 or 3 and TYPEB = 6, set OUTCOME = 234 and RI_DISP = 022.

If FALSIF = 2 or 3 and TYPEB = 7, set OUTCOME = 224 and RI_DISP = 038.

If FALSIF = 2 or 3 and TYPEB = 8, set OUTCOME = 225 and RI_DISP = 039.

If FALSIF = 2 or 3 and TYPEB = 9, set OUTCOME = 233 and RI_DISP = 041.

If FALSIF = 2 or 3 and TYPEB_ALT = 1, set OUTCOME = 226 and RI_DISP = 017.

If FALSIF = 2 or 3 and TYPEB_ALT = 2, set OUTCOME = 326 and RI_DISP = 018.

If FALSIF = 2 or 3 and TYPEB_ALT = 3, set OUTCOME = 227 and RI_DISP = 019.

If FALSIF = 2 or 3 and TYPEB_ALT = 4, set OUTCOME = 230 and RI_DISP = 020.

If FALSIF = 2 or 3 and TYPEB_ALT = 5, set OUTCOME = 231 and RI_DISP = 021.

If FALSIF = 2 or 3 and TYPEB_ALT = 6, set OUTCOME = 228 and RI_DISP = 023.

If FALSIF = 2 or 3 and TYPEB_ALT = 7, set OUTCOME = 234 and RI_DISP = 022.

If FALSIF = 2 or 3 and TYPEB_ALT = 8, set OUTCOME = 224 and RI_DISP = 038.

If FALSIF = 2 or 3 and TYPEB_ALT = 9, set OUTCOME = 225 and RI_DISP = 039.

If FALSIF = 2 or 3 and TYPEB_ALT = 10, set OUTCOME = 225 and RI_DISP = 040.

If FALSIF = 2 or 3 and TYPEB_ALT = 11, set OUTCOME = 233 and RI_DISP = 041.

If FALSIF = 2 or 3 and TYPEC = 1, set OUTCOME = 240 and RI_DISP = 024.

If FALSIF = 2 or 3 and TYPEC = 2, set OUTCOME = 241 and RI_DISP = 025.

If FALSIF = 2 or 3 and TYPEC = 3, set OUTCOME = 243 and RI_DISP = 026.

If FALSIF = 2 or 3 and TYPEC = 4, set OUTCOME = 245 and RI_DISP = 027.

If FALSIF = 2 or 3 and TYPEC = 5, set OUTCOME = 250 and RI_DISP = 030.

If FALSIF = 2 or 3 and TYPEC = 6, set OUTCOME = 251 and RI_DISP = 031.

If FALSIF = 2 or 3 and TYPEC = 7, set OUTCOME = 248 and RI_DISP = 042.

Coding Misclassified Original Type B, C, or Vacant Interview Cases:

If FALSIF = 1 and (MISC_B = 1 or MISC_BVINT = 1), set OUTCOME = 301 and RI_DISP = 096.

If FALSIF = 1 and (MISC_B = 3 or MISC_BVINT = 4), set OUTCOME = 301 and RI_DISP = 099.

If FALSIF = 1 and (MISC_B = 4 or MISC_BVINT = 5), set OUTCOME = 301 and RI_DISP = 100.

If FALSIF = 1 and (MISC_C = 1 or MISC_CVINT = 1), set OUTCOME = 301 and RI_DISP = 097.

If FALSIF = 1 and (MISC_C = 2 or MISC_CVINT = 3), set OUTCOME = 301 and RI_DISP = 101.

If FALSIF = 1 and (MISC_C = 4 or MISC_CVINT = 5), set OUTCOME = 301 and RI_DISP = 102.

If FALSIF = 1 and (MISC_B = 2 or MISC_BVINT = 3 or MISC_C = 3 or MISC_CVINT = 4), set OUTCOME = 301 and RI_DISP = 103.

If FALSIF = 1 and MISC_VINT = 1, set OUTCOME = 301 and RI_DISP = 106.

If FALSIF = 1 and MISC_VINT = 2, set OUTCOME = 301 and RI_DISP = 104.

If FALSIF = 1 and MISC_BVINT = 2, set OUTCOME = 301 and RI_DISP = 109.

If FALSIF = 1 and MISC_CVINT = 2, set OUTCOME = 301 and RI_DISP = 108.

If FALSIF = 2 or 3 and (MISC_B = 1 or MISC_BVINT = 1), set OUTCOME = 301 and RI_DISP = 043.

If FALSIF = 2 or 3 and (MISC_B = 3 or MISC_BVINT = 4), set OUTCOME = 301 and RI_DISP = 046.

If FALSIF = 2 or 3 and (MISC_B = 4 or MISC_BVINT = 5), set OUTCOME = 301 and RI_DISP = 047.

If FALSIF = 2 or 3 and (MISC_C = 1 or MISC_CVINT = 1), set OUTCOME = 301 and RI_DISP = 044.

If FALSIF = 2 or 3 and (MISC_C = 2 or MISC_CVINT = 3), set OUTCOME = 301 and RI_DISP = 048.

If FALSIF = 2 or 3 and (MISC_C = 4 or MISC_CVINT = 5), set OUTCOME = 301 and RI_DISP = 049.

If FALSIF = 2 or 3 and (MISC_B = 2 or MISC_BVINT = 3 or MISC_C = 3 or MISC_CVINT = 4), set OUTCOME = 301 and RI_DISP = 058.

If FALSIF = 2 or 3 and MISC_VINT = 1, set OUTCOME = 301 and RI_DISP = 059.

If FALSIF = 2 or 3 and MISC_VINT = 2, set OUTCOME = 301 and RI_DISP = 051.

If FALSIF = 2 or 3 and MISC_BVINT = 2, set OUTCOME = 301 and RI_DISP = 050.

If FALSIF = 2 or 3 and MISC_CVINT = 2, set OUTCOME = 301 and RI_DISP = 045.

Coding Cases with Discrepancies:

If FALSIF = 1 and RI_OUTCM = 2 and ORIOUT_RSLT = INT, set OUTCOME = 301 and RI_DISP = 060

If FALSIF = 1 and RI_OUTCM = 1 and DISCREPANCY[1] = 1 and all other elements in DISCREPANCY array blank, set OUTCOME = 301 and RI_DISP = 066.
If FALSIF = 1 and RI_OUTCM = 1 and DISCREPANCY[6] = 6 and all other elements in DISCREPANCY array blank, set OUTCOME = 301 and RI_DISP = 066.
If FALSIF = 1 and RI_OUTCM = 1 and DISCREPANCY[7] = 7 and all other elements in DISCREPANCY array blank, set OUTCOME = 301 and RI_DISP = 061.
If FALSIF = 1 and RI_OUTCM = 1 and DISCREPANCY[8] = 8 and all other elements in DISCREPANCY array blank, set OUTCOME = 301 and RI_DISP = 062.
If FALSIF = 1 and RI_OUTCM = 1 and DISCREPANCY[9] = 9 and all other elements in DISCREPANCY array blank, set OUTCOME = 301 and RI_DISP = 111.
If FALSIF = 1 and RI_OUTCM = 1 and DISCREPANCY[10] = 10 and all other elements in DISCREPANCY array blank, set OUTCOME = 301 and RI_DISP = 112.
If FALSIF = 1 and RI_OUTCM = 1 and DISCREPANCY[12] = 12 and all other elements in DISCREPANCY array blank, set OUTCOME = 301 and RI_DISP = 110.

FALSIF = 3 and RI_OUTCM = 1 and DISCREPANCY[1] = 1 and all other elements in DISCREPANCY array blank, set OUTCOME = 301 and RI_DISP = 012.
If FALSIF = 3 and RI_OUTCM = 1 and DISCREPANCY[7] = 7 and all other elements in DISCREPANCY array blank, set OUTCOME = 301 and RI_DISP = 009.
If FALSIF = 3 and RI_OUTCM = 1 and DISCREPANCY[8] = 8 and all other elements in DISCREPANCY array blank, set OUTCOME = 301 and RI_DISP = 005.
If FALSIF = 3 and RI_OUTCM = 1 and DISCREPANCY[9] = 9 and all other elements in DISCREPANCY array blank, set OUTCOME = 301 and RI_DISP = 011.
If FALSIF = 3 and RI_OUTCM = 1 and DISCREPANCY[10] = 10 and all other elements in DISCREPANCY array blank, set OUTCOME = 301 and RI_DISP = 004.
If FALSIF = 3 and RI_OUTCM = 1 and DISCREPANCY[12] = 12 and all other elements in DISCREPANCY array blank, set OUTCOME = 301 and RI_DISP = 010.

If FALSIF = 3 and RI_OUTCM = 2 and ORIOUT_RSLT = INT and DISCREPANCY[2] = 2 and all other elements in DISCREPANCY array blank, set OUTCOME = 301 and RI_DISP = 012.

- **UNIVERSE** - (FALSIF = 2 and RI_OUTCM = 1 and DISCREPANCY [6] = blank and one or more elements in DISCREPANCY array \geq 1) or
 (FALSIF = 2 and RI_OUTCM = 1 and two or more elements in DISCREPANCY array \geq 1) or
 (FALSIF = 2 and RI_OUTCM = 2 and ORIOUT_RSLT = INT) or

- ◆ Explain why you do not suspect falsification in the Reinterview Notes now.
- ◆ Press Ctrl-F7 to access Reinterview Notes.
- ◆ Enter 1 when done with your explanation in the Reinterview Notes.

<u>Name</u>	<u>Description</u>	<u>Value</u>	<u>Skip</u>
DISCREP_NOTES	Discrepancy notes	1	[If only one element in array DISCREPANCY \geq 1 goto RINOTES_PRE] [goto NSF_RIDISP]

- **SPECIAL INSTRUCTIONS**

If FALSIF = 2 and RI_OUTCM = 1 and DISCREPANCY[1] = 1 and all other elements in DISCREPANCY array blank, set OUTCOME = 301 and RI_DISP = 012.

If FALSIF = 2 and RI_OUTCM = 1 and DISCREPANCY[7] = 7 and all other elements in DISCREPANCY array blank, set OUTCOME = 301 and RI_DISP = 009.

If FALSIF = 2 and RI_OUTCM = 1 and DISCREPANCY[8] = 8 and all other elements in DISCREPANCY array blank, set OUTCOME = 301 and RI_DISP = 005.

If FALSIF = 2 and RI_OUTCM = 1 and DISCREPANCY[9] = 9 and all other elements in DISCREPANCY array blank, set OUTCOME = 301 and RI_DISP = 011.

If FALSIF = 2 and RI_OUTCM = 1 and DISCREPANCY[10] = 10 and all other elements in DISCREPANCY array blank, set OUTCOME = 301 and RI_DISP = 004.

If FALSIF = 2 and RI_OUTCM = 1 and DISCREPANCY[12] = 12 and all other elements in DISCREPANCY array blank, set OUTCOME = 301 and RI_DISP = 010.

If FALSIF = 2 and RI_OUTCM = 2 and ORIOUT_RSLT = INT and DISCREPANCY[2] = 2 and all other elements in DISCREPANCY array blank, set OUTCOME = 301 and RI_DISP = 012.

- **UNIVERSE** - (DISCREP_NOTES = 1 and two or more elements in DISCREPANCY array \geq 1) or (FALSIF = 3 and RI_OUTCM = 1 and two or more elements in DISCREPANCY array \geq 1) or (FALSIF = 3 and RI_OUTCM = 2 and ORIOUT_RSLT = INT and two or more elements in DISCREPANCY array \geq 1)

Your reinterview detected multiple discrepancies.

◆ Enter the code of the detected discrepancy which best describes this case.

1. Respondent said no one contacted household.
2. You determined original status, 201 - Interview, incorrect.
6. Respondent indicated original status incorrect.
7. Household roster incorrect.
8. Not all original survey questions asked.
9. (S)FR conducted a telephone interview only when personal visit required.
10. Case done by a personal visit and respondent said laptop not used.
12. CU make-up incorrect.

<u>Name</u>	<u>Description</u>	<u>Value</u>	<u>Skip</u>
NSF_RIDISP	Discrepancy options - no suspected falsification	<1-20 12>	[goto RINOTES_PRE]

• SPECIAL INSTRUCTIONS

List in the answer list section only the choices that correspond to elements in DISCREPANCY array \geq 1.

Allow only a value in NSF_RIDISP that corresponds to an element in DISCREPANCY array \geq 1.

- If NSF_RIDISP = 1, set OUTCOME = 301 and RI_DISP = 012.
- If NSF_RIDISP = 2, set OUTCOME = 301 and RI_DISP = 012.
- If NSF_RIDISP = 6, set OUTCOME = 301 and RI_DISP = 012.
- If NSF_RIDISP = 7, set OUTCOME = 301 and RI_DISP = 009.
- If NSF_RIDISP = 8, set OUTCOME = 301 and RI_DISP = 005.
- If NSF_RIDISP = 9, set OUTCOME = 301 and RI_DISP = 011.
- If NSF_RIDISP = 10, set OUTCOME = 301 and RI_DISP = 004.
- If NSF_RIDISP = 12, set OUTCOME = 301 and RI_DISP = 010.



- **UNIVERSE** - (FALSIF = 1 and RI_OUTCM=1 and two or more elements in DISCREPANCY array \geq 1).

Your reinterview detected multiple discrepancies.

- ◆ Enter the code of the detected discrepancy which best describes the primary reason you suspect falsification.

1. Respondent said no one contacted household.
6. Respondent indicated original status incorrect.
7. Household roster incorrect.
8. Not all original survey questions asked.
9. (S)FR conducted a telephone interview only when personal visit required.
10. Case done by a personal visit and respondent said laptop not used.
12. CU make-up incorrect.

<u>Name</u>	<u>Description</u>	<u>Value</u>	<u>Skip</u>
SF_RIDISP	Discrepancy options - suspect falsification	<1- 20 12>	[goto RINOTES_PRE]

- SPECIAL INSTRUCTIONS

List in the answer list section only the choices that correspond to elements in DISCREPANCY array \geq 1.

Allow only a value in SF_RIDISP that corresponds to an element in DISCREPANCY array \geq 1.

- If SF_RIDISP = 1, set OUTCOME = 301 and RI_DISP = 066
 - If SF_RIDISP = 6, set OUTCOME = 301 and RI_DISP = 066
 - If SF_RIDISP = 7, set OUTCOME = 301 and RI_DISP = 061
 - If SF_RIDISP = 8, set OUTCOME = 301 and RI_DISP = 062
 - If SF_RIDISP = 9, set OUTCOME = 301 and RI_DISP = 111
 - If SF_RIDISP = 10, set OUTCOME = 301 and RI_DISP = 112
 - If SF_RIDISP = 12, set OUTCOME = 301 and RI_DISP = 110.
-

XVI. Sufficient Partial/Complete (201)

To be considered a sufficient partial/complete reinterview (201), one of the following questions must be completed:

CONTACT_C
 STATUS
 STAT_PROBE
 VERBYOBS
 VERTYPEA
 VACANT

XVII. Attachments

Attachment A: CEQ 2007 Reinterview Instrument Screen Index

Attachment B: CEQ 2007 Reinterview Instrument Flowcharts

Attachment C: CEQ 2007 Reinterview Instrument Flowchart Index

Attachment D: CEQ 2007 Sample Redesign Reinterview SCIF

Attachment E: List of Original Outcome Codes in the CEQ Original Instrument

Attachment F: CEQ 2007 Reinterview Disposition, Outcome, and Action Codes

Attachment G: HH Roster Variable Descriptions Used in the CEQ 2007 Reinterview Instrument

Attachment H: Original Outcome Code Descriptions for the STATUS Screen

Attachment I: Discrepancy Codes and Descriptions for Elements in DISCREPANCY Array

Attachment J: Original Instrument Specification for the BYOBS and Contact Person Information Screens

If you have any questions regarding this document, please contact Patty Hartman at x31975.

Attachments (10)

cc:

C. Pickering	BLS
S. Smiley	DSD
R. Roberts	"
J. Ruffin	FLD
W. Dyer	TMO
R. Michalco	"
J. Scott	DSMD
C. Barnes	"
C. Wrenn-Yorker	"

P. Hartman
B. Zhang

"
"

CEQ 2007 REINTERVIEW INSTRUMENT SCREEN INDEX

SCREEN NAME	PAGE NO.	GENERIC (with changes)	NEW
CU_LISTING	41		✓
DIAL	26 - 27	✓	
DISCREP_NOTES	80	✓	
FALSIF	74 - 79	✓	
H_PURPOSE	16	✓	
H_PURPOSE1	17	✓	
H_PURPOSE2	18	✓	
H_PURPOSE3	19	✓	
H_PURPOSE4	20	✓	
H_PURPOSE5	21	✓	
HHCOMP	25	✓	
MULTI_FOOD	51		✓
MULTI_HOUSING	50		✓
MULTI_OTHER	52 - 53		✓
MULTI-RELATED	48 - 49		✓
NSF_RIDISP	81	✓	
ORMODE	30	✓	
PHONE_REQUEST	31		✓
POLITE	32	✓	
RIREF3	15	✓	

CEQ 2007 REINTERVIEW INSTRUMENT SCREEN INDEX

SCREEN NAME	PAGE NO.	GENERIC (with changes)	NEW
RIRESP	28 - 29	✓	
ROSTER_1	33 - 24	✓	
ROSTER_2	35	✓	
ROSTER_3	36 - 37	✓	
ROSTER_4	38	✓	
SF_RIDISP	82	✓	
SINGLE_FOOD	45		✓
SINGLE_HOUSING	44		✓
SINGLE_OTHER	46 - 47	✓	
SINGLE_RELATED	42 - 43	✓	
START	22 - 24	✓	
SURVEY_1	39 - 40	✓	
SURVEY_2	58		✓ (deleted)
SURVEY_3	59		✓ (deleted)
SURVEY_4	60		✓ (deleted)
SURVEY _ 1_1	61		✓ (added)
SURVEY _ 1_2	62		✓ (added)
SURVEY _ 1_3	63		✓ (added)
SURVEY _ 2_1	64		✓ (added)

CEQ 2007 REINTERVIEW INSTRUMENT SCREEN INDEX

SCREEN NAME	PAGE NO.	GENERIC (with changes)	NEW
SURVEY_2_2	65		✓ (added)
SURVEY_2_3	66		✓ (added)
SURVEY_3_1	67		✓ (added)
SURVEY_3_2	68		✓ (added)
SURVEY_3_3	69		✓ (added)
SURVEY_5	70		✓ (deleted)
SURVEY_6	71		✓
TENURE_1	54		✓
TENURE_2	55		✓
TENURE_3	56		✓
TENURE_4	57		✓
THANK_YOU	72 -73	✓	

CEQ 2007 REINTERVIEW INSTRUMENT SCREEN INDEX

SCREEN NAME	PAGE NO.	GENERIC (with changes)	NEW
ADDVER	Front: 4, 5, 6, 7, 8		
APPT	Front: 4, 6, 7, 8, Back: 21		
APPT2	Front: 5, 6, 7, 8, Back: 21		
BY_OBS	Front: 2		
CBTHANK	Back: 21		
CKSUP	Front: 6		
CONTACT_C	Middle: 9		
CONTACT_N	Front: 4, 5, 6, 7, Middle: 13		
CU-LISTING	Middle: 12		
DIAL	Front: 2, 4, 5		
DISCREP_NOTES	Back: 14		
END	Front: 4		
FALSIF	Front: 3, Back: 14, (14a, 14b), 16, 18		
FIN	Back: 21		
H_ABBREV1	Front: 1		
H_PURPOSE	Front: 1		
H_PURPOSE1-5	Front: 1		
HELLO_PC	Front: 6		
HELLO_PCX	Front: 6, 7		
HELLO_PN	Front: 6, 7		

CEQ 2007 REINTERVIEW INSTRUMENT SCREEN INDEX

SCREEN NAME	PAGE NO.	GENERIC (with changes)	NEW
<i>HELLO_PNX</i>	<i>Front: 6, 7</i>		
<i>HELLO_TC</i>	<i>Front: 4, 5</i>		
<i>HELLO_TCX</i>	<i>Front: 4</i>		
<i>HELLO_TN</i>	<i>Front: 4, 5</i>		
<i>HELLO_TNX</i>	<i>Front: 4</i>		
<i>HHCOMP</i>	<i>Front: 1, 2</i>		
<i>HHMEM</i>	<i>Front: 5, 6, 8</i>		
<i>HHMEM2</i>	<i>Front: 8</i>		
<i>_INTRO_</i>	<i>Front: 4, 5</i>		
<i>INTRO_PC</i>	<i>Front: 6</i>		
<i>INTRO_PN</i>	<i>Front: 7</i>		
<i>INTRO_TC</i>	<i>Front: 5</i>		
<i>INTRO_TN</i>	<i>Front: 5</i>		
<i>KEY_REF</i>	<i>Front: 1</i>		
<i>LAPTOP</i>	<i>Middle: 9, 13</i>		
<i>LENGTH_H</i>	<i>Middle: 9</i>		
<i>LENGTH_M</i>	<i>Middle: 9</i>		
<i>METHOD</i>	<i>Front: 2</i>		
<i>MISC_B</i>	<i>Front: 3, Back: 18</i>		
<i>MISC_BVINT</i>	<i>Front: 3, Back: 18</i>		

CEQ 2007 REINTERVIEW INSTRUMENT SCREEN INDEX

SCREEN NAME	PAGE NO.	GENERIC (with changes)	NEW
MISC_C	<i>Front: 3, Back: 18</i>		
MISC_CVINT	<i>Front: 3, Back: 18</i>		
MISC_VINT	<i>Front: 3, Back: 18</i>		
MULTI_HOUSING	<i>Middle: 12</i>		
MULTI_FOOD	<i>Middle: 12</i>		
MULTI_OTHER	<i>Middle: 12</i>		
MULTI_RELATED	<i>Middle: 12</i>		
NEWNUMBER_A	<i>Front: 4</i>		
NEWNUMBER_CE	<i>Front: 4</i>		
NEWNUMBER_CP	<i>Front: 4</i>		
NEWNUMBER_E	<i>Front: 4</i>		
NEWNUMBER_P	<i>Front: 4</i>		
NEWNUMBER_S	<i>Front: 4</i>		
NO_DISCREP	<i>Back: 14</i>		
NONINT	<i>Front: 3, Back: 16, 18, 19</i>		
NSF_RIDISP	<i>Back: 14a, 14b, 15</i>		
ORMODE	<i>Middle: 9, 13</i>		
PHONE_REQUEST	<i>Middle: 9</i>		
POLITE	<i>Middle: 9, 13</i>		
PO_NOTES	<i>Middle: 9, 13</i>		

CEQ 2007 REINTERVIEW INSTRUMENT SCREEN INDEX

SCREEN NAME	PAGE NO.	GENERIC (with changes)	NEW
<i>PROX_C</i>	<i>Front: 8</i>		
<i>PROX_N</i>	<i>Front: 5, 7</i>		
<i>PROX_PRESENT</i>	<i>Middle: 9, 13</i>		
<i>PROX_UC</i>	<i>Front: 8</i>		
<i>PROX_UN</i>	<i>Front: 6</i>		
<i>READYWRAP</i>	<i>Back: 21</i>		
<i>REFNUM</i>	<i>Front: 5</i>		
<i>RINOTES_PRE</i>	<i>Front: 2, 3, 4, 6, Back: 14, 14a, 14b, 15, 17, 19, 21</i>		
<i>RIREASON</i>	<i>Front: 1</i>		
<i>RIREF1-4</i>	<i>Front: 1</i>		
<i>RIRESP</i>	<i>Front: 5, 6, 8, Middle: 9</i>		
<i>RI_OUTCM</i>	<i>Front: 6, 8, Back: 18, 19, 20, 21</i>		
<i>ROSTER_1</i>	<i>Middle: 9, 10</i>		
<i>ROSTER_2-4</i>	<i>Middle: 10</i>		
<i>RO_DISC</i>	<i>Front: 2, Back: 17</i>		
<i>SF_RIDISP</i>	<i>Back: 14, 17</i>		
<i>SINGLE_FOOD</i>	<i>Middle: 12</i>		
<i>SINGLE_HOUSING</i>	<i>Middle: 12</i>		
<i>SINGLE_OTHER</i>	<i>Middle: 12</i>		
<i>SINGLE_RELATED</i>	<i>Middle: 12</i>		

CEQ 2007 REINTERVIEW INSTRUMENT SCREEN INDEX

SCREEN NAME	PAGE NO.	GENERIC (with changes)	NEW
<i>SOMEONE_ELSE</i>	<i>Middle: 9, 13</i>		
<i>SPEAKTO</i>	<i>Middle: 9, 13</i>		
<i>SPEAKTO2</i>	<i>Middle: 11</i>		
<i>START</i>	<i>Front: 2</i>		
<i>START_1</i>	<i>Front: 2</i>		
<i>START_1A</i>	<i>Front: 2</i>		
<i>STAT_PROBE</i>	<i>Middle: 13</i>		
<i>STAT_PROB2</i>	<i>Middle: 11, 13</i>		
<i>STAT_VER</i>	<i>Middle: 11</i>		
<i>STATUS</i>	<i>Middle: 13</i>		
<i>STATUS_RI</i>	<i>Front: 2, 4, 5, 6, 7, Back: 19, 20, 21</i>		
<i>SURVEY_1</i>	<i>Middle: 10, 11, 12</i>		
<i>SURVEY_1_1</i>	<i>Middle: 12a</i>		
<i>SURVEY_1_2</i>	<i>Middle: 12a</i>		
<i>SURVEY_1_3</i>	<i>Middle: 12a</i>		
<i>SURVEY_2_1</i>	<i>Middle: 12a</i>		
<i>SURVEY_2_2</i>	<i>Middle: 12a</i>		
<i>SURVEY_2_3</i>	<i>Middle: 12a</i>		
<i>SURVEY_3_1</i>	<i>Middle: 12a</i>		
<i>SURVEY_3_2</i>	<i>Middle: 12a</i>		

CEQ 2007 REINTERVIEW INSTRUMENT SCREEN INDEX

SCREEN NAME	PAGE NO.	GENERIC (with changes)	NEW
<i>SURVEY_3_3</i>		<i>Middle: 12a</i>	
<i>SURVEY_6</i>		<i>Middle: 12b</i>	
<i>TENURE_1</i>		<i>Middle:12, 12a</i>	
<i>TENURE_2</i>		<i>Middle: 12a</i>	
<i>TENURE_3</i>		<i>Middle: 12a</i>	
<i>TENURE_4</i>		<i>Middle:12a</i>	
<i>THANK_NOHH</i>		<i>Front: 8, Back: 19</i>	
<i>THANK_REF</i>		<i>Front: 5, 6, 7, Back: 19</i>	
<i>THANK_SORRY</i>		<i>Front: 6, Back: 19</i>	
<i>THANK_YOU</i>		<i>Front: 5, 6, 7, 8, Middle: 11, 12a,12b, 13, Back: 20</i>	
<i>TYPEA</i>		<i>Back: 16</i>	
<i>TYPEB</i>		<i>Back: 16</i>	
<i>TYPEB_ALT</i>		<i>Back: 16</i>	
<i>TYPEC</i>		<i>Back: 16</i>	
<i>VACANT</i>		<i>Middle: 11, 13</i>	
<i>VACANT2</i>		<i>Middle: 11</i>	
<i>VERBYOBS</i>		<i>Front: 2, 3, 6</i>	
<i>VERTYPEA</i>		<i>Front: 2, 3, 6</i>	
<i>VERTELE</i>		<i>Front: 5</i>	
<i>WRNUM</i>		<i>Front: 5</i>	

SCIF Record Type 85 Subtype 00 (Dependent Data)					RT850000
Name/Description	Instrument Variable Name	Length	Record Position	Values	Required
Household Level Variables					
Record Type - Hard-coded information used by TMO control systems.	RecType	2	1-2	85	√
Record Sub-Type - Hard-coded information used by TMO control systems.	RecSubType	2	3-4	00	√
Roster Information - Hard-coded information used by Blaise to indicate the first record of an entity.	ROSTERINFO	34	5-38	varies	
By Observation Flag	BYOBS	1	39-39	1=observation only 2=information provided by contact person 0 or empty=question not asked for Interview or Type A	
Reassignment	REASSG	1	40-40		
Original Interview Date	INTDATE	8	41 - 48	date original instrument last touched Format: mmddyyyy	
Original Interview Time	INTTIME	6	49 -54	time original instrument last touched Format: hhmmss in military time	
Length of Original Interview	LENGTH	8	55 -62		
Personal Visit/Telephone Flag	TELPV	1	63 - 63	1=personal visit 2=phone	
Language of Original Interview	LANG_OI	20	64 - 83		

SCIF Record Type 85 Subtype 00 (Dependent Data)

RT850000

Name/Description	Instrument Variable Name	Length	Record Position	Values	Required
Other Type A Noninterview - specified write-in Note: Variable name TYPEASP in original instrument. Converted to TYPEA_SP in manipula script	TYPEA_SP	45	84-128		
Other Type B Noninterview - specified write-in	TYPEB_SP	45	129-173		
Other Type C Noninterview - specified write-in	TYPEC_SP	45	174-218		
HH Number	HHNUMB	1	219-219	TMO pulls from position 19 of Control Number (CTRLNUM).	
CU Number	CUNUMB	2	220-221	TMO pulls from positions 20-21 of Control Number (CTRLNUM).	
Year Built - indicates whether the unit was built before or after April 1, 1990.	YRBLT	1	222-222		
Coverage Question10a	BUILD	1	223-223	1 = Yes 2 = No D = Don't Know	
Coverage Question10c	PROPER	1	224-224	1 = Yes 2 = No D = Don't Know	
Classification of Living Quarter	HUTYPE	2	225-226	1 = House 2 = HU in nontransient hotel 3 = HU permanent in transient hotel 4 = HU in rooming house 5 = Mobile home/trailer with no permanent room added	

SCIF Record Type 85 Subtype 00 (Dependent Data)

RT850000

Name/Description	Instrument Variable Name	Length	Record Position	Values	Required
				6 = Mobile home/trailer with permanent room(s) added 7 = HU not specified above 8 = Quarters not HU in rooming 9 = student quarters 10 = other unit not specified above	
CU Tenure-used as student housing	ST_HOUS	1	227-227	1 = Student housing 2 = Not student housing	
CU Tenure-owned or being bought	OWNED	1	228-228	1 = Yes 2 = No	
CU Tenure-pay rent	RENTED	1	229-229	1 = Yes 2 = No	
CU Tenure-reduced or free rent	RTASPAY	1	230-230	1 = Yes 2 = No	
Note: The manipula script for this variable is SECTOR02.RENT(1).RTASPAY. The original instrument output wanted is RTASPAY when SAMP_UN=1.					
Total number of CUs in household	TOTAL_CU	2	231-232		
Reference month	REF_MONTH	9	233-241	January, February, March, ..., November, December	
Number of persons in primary CU	NUMHOUSE	2	242-243		
Frame - Design Frame, also called segment type in the TMO systems.	FRAME	1	244-244	1 = Area 2 = Unit 3 = Group Quarter (GQ) 4 = Permit 5 = Address	

SCIF Record Type 85 Subtype 00 (Dependent Data)					RT850000
Name/Description	Instrument Variable Name	Length	Record Position	Values	Required
Permit/Non-Permit Status - indicates whether or not the block was screened as being in a permit issuing area.	PRMITSTA	1	245-245	N = non-permit P = permit	
Design Flag - Design Year	DESIGN	2	246-247	00 = 2000 80 = 1980 90 = 1990	
Language used to conduct interview	LANGUAGE	1	248-248	1 = English 2 = Spanish 3 = Other	
Line number of primary respondent	RESPON	2	249-250		
Group number of section questions selected for reinterview	SURVEY_SET	1	251-252		
Note: Value filled by LEVSPB-DSMD as defined in Addendum Specifications					
Person Level Variables¹					
Record Type	RecType	2	1-2	85	✓
Record Sub-Type	RecSubType	2	3-4	00	✓
Block Number	na	20	5-24	01 Left justify and blank fill.	
Total Number of Records for Block (i.e., total number of household members)	NROSIZE	4	25-28	Right justify and zero fill	
Blank area	na	8	29-36		

¹Person level variables are repeated for each person on household roster

SCIF Record Type 85 Subtype 00 (Dependent Data)				RT850000	
Name/Description	Instrument Variable Name	Length	Record Position	Values	Required
Line Number (i.e., sequential "line number" for each record within block starting with 1) Note: Variable name MEMBNO in original instrument. Converted to LNO in manipula script.	LNO	2	37-38	Right justify and zero fill	
Eligible Respondent Flag	QCRESP	1	39-39	0 = not respondent 1 = main respondent (based on RESPON in original instrument) 2 = other respondent (based on OTHRESP in original instrument)	
First Name	FNAME	20	40 - 59	Length of 16 plus pad 4 spaces	
Last Name	LNAME	20	60 -79	Length of 16 plus pad 4 spaces	
Age	AGE	3	80 - 82		
	RACE	2	83 - 84		
Multiple Race	MULTR	1	85 - 85		Race
Relationship Note: Variable name CU_CODE in original instrument. Converted to REL in manipula script.	REL	2	86 - 87	1=Reference person 2=Spouse 3=Child 4=Grandchild 5=In-law 6=Brother/Sister 7=Parent(s) 8=Other related person 9=unrelated person	

SCIF Record Type 85 Subtype 00 (Dependent Data)

RT850000

Name/Description	Instrument Variable Name	Length	Record Position	Values	Required
				10= unmarried partner	
Sex	SEX	1	88-88	1=Male 2=Female	
Household Status Flay	MEMBSTAT	1	89 - 89	1=delete 2=reinstate 5=skip	
Removed from Household	PERSTAT	3	90 - 92	7=delete 9=reinstate 99=should not be listed 998=refused 999=don't know	
Away at College	AWAY_COL	1	93-93	1=Yes 2=No 8=Refused 9=Don't know	
Household Member	HH_MEM	1	94-94	1=Yes 2=No	
CU Number	PERCUNUM	2	95-96	1, 2, 3, ..., 99	

List of Original Outcome Codes in the CEQ Original Instrument

<u>OUTCOME</u>	<u>Description</u>
Interviews or Unresolved	
200	New case, not started
201	Completed interview
202	Case started, insufficient partial
203	Partial - Transmit, no more follow-up possible.
204	Partial - Callback to complete
206	Don't know follow-up needed
Type As	
216	Type A - No one home (unable to contact)
217	Type A - Temporarily absent
219	Other Type A
321	Type A - Refused, Hostile respondent
322	Type A - Refused, Time related excuses
323	Type A - Refused, Language problems
324	Type A - Refused, Other
Type Bs	
224	Type B - All persons under 16
225	Type B - Occupied by persons with URE
226	Type B - Vacant for rent
228	Type B - Unfit, to be demolished
229	Type B - Under construction, not ready
231	Type B - Unoccupied tent/trailer site
232	Type B - Permit granted, construction not started
233	Type B - Other
331	Type B - Vacant for sale
332	Type B - Vacant other
Type Cs	
240	Type C - Demolished
241	Type C - House or trailer moved
243	Type C - Converted to permanent nonresidential use
244	Type C - Merged units within same structure
245	Type C - Condemned
246	Type C - Built After April 1, 2000
247	Type C - Unused serial # or listing sheet (Note: Ineligible for reinterview)
248	Type C - Other
252	Type C - Located on military base or post

OUTCOME**Description****Type Cs - continued**

256	Type C - Removed during subsampling (Note: Ineligible for reinterview)
257	Type C - Unit already had a chance of selection (Note: Ineligible for reinterview)
290	Type C - Spawned in error (Note: Ineligible for reinterview)
341 (BYOBS=1, 2)	Type C - CU moved
341 (BYOBS blank)	Type C - Household replaced (Note: Ineligible for reinterview)
342	Type C - CU merged with another CE CU within same address

**Household Roster Variable Descriptions
Used in the CEQ 2007 Reinterview Instrument**

The table below contains the values and descriptions for the household roster variables used in the CEQ 2000 Sample Redesign reinterview instrument.

Variable	Value	Description
REL	01	Reference person
	02	Spouse
	03	Child
	04	Grandchild
	05	In-law
	06	Brother/Sister
	07	Mother/Father
	08	Other related person
	09	Unrelated person
	10	Unmarried partner
SEX	1	Male
	2	Female
AWAY_COL	1	Yes
	2	No
	8	Refused
	9	Don't know
HH_MEM	1	Yes
	2	No

**CEQ 2007 Reinterview
Original Outcome Codes Descriptions for the STATUS Screen**

Use the following descriptions for the original outcome codes to fill ORIOUT's description on the STATUS screen.

If original outcome code is:

fill with:

224 "was a home where the entire household was under 16 years old."

225 "was occupied by persons who usually live at another address."

226, 331, 332 "was vacant."

228 "was unfit to live in or scheduled to be demolished."

229 "was under construction."

231 "was an unoccupied tent or trailer site."

232 "was a building site where construction had not started."

240 "was demolished."

241 "was a lot that a house or trailer had been moved off of."

243 "was converted to permanent nonresidential use."

244 "was merged with another unit within the same structure."

245 "was condemned."

246 "was built after April 1, 1990."

252 "was located on a military base or post."

**CEQ 2007 Reinterview
Discrepancy Codes and Descriptions for Elements in DISCREPANCY Array**

<u>Element/ Code</u>	<u>Description</u>
1.	The reinterview respondent said no one contacted this household regarding this survey.
2.	You determined that the original status, [Fill: ORIOUT] - [Fill: ORIOUT's description from Attachment E], was incorrect.
3.	The status of this case was completed by observation in the original interview. You determined that the original status, [Fill: ORIOUT] - [Fill: ORIOUT's description from Attachment E] was incorrect.
4.	This case was a Type A in the original interview. You determined that the original status, [Fill: ORIOUT] - [Fill: ORIOUT's description from Attachment E], was incorrect.
5.	The (S)FR classified this unit as a Type B or Type C Noninterview and you determined that it should have been an Interview or Type A.
6.	The reinterview respondent indicated that the original status, [Fill: ORIOUT] - [Fill: ORIOUT's description from Attachment E] was incorrect.
7.	The household roster was incorrect.
8.	Not all survey questions were asked in the interview.
9.	The (S)FR conducted a telephone interview only instead of a personal visit interview, as required.
10.	This case was done by a personal visit and the reinterview respondent said the (S)FR did not use a laptop.
11.	The (S)FR entered a bad telephone number for this case.
12.	The make-up of the CU(s) was incorrect.

**Original Instrument Specifications for the
BYOBS and Contact Person Information Screens**

Note: This attachment defines original instrument screens used to collect information on Type B and C noninterviews needed for reinterview.

- **UNIVERSE** - screen(s) at end of original interview for Type B and C Noninterview cases

◆	Was the noninterview status determined by observation only or did someone provide information about the sample unit?
1.	Observation Only
2.	Information Provided by Someone

<u>Name</u>	<u>Description</u>	<u>Value</u>	<u>Skip</u>
BYOBS	Noninterview by observation or contact person	1	[continue interview]
		2	[go to BCINFO]

- **SPECIAL INSTRUCTIONS**

If BYOBS = 2, set CP1TYPE = 1.

- **UNIVERSE** - BYOBS = 2

◆ Collect information about the Type B/C contact person who helped you determine the status of the sample unit.
Name: (enter contact person's name)
Title: (enter contact person's title, ex. relative, neighbor, etc.)
Address: (enter contact person's address - line 1)
(enter contact person's address - line 2)
City: (enter contact person's city)
State: (enter contact person's state)
Zip Code: (enter contact person's ZIP code and ZIP4)
Area Code and Phone Number: (enter contact person's phone number with area code)
Extension: (enter contact person's phone extension)
1. Continue

<u>Name</u>	<u>Description</u>	<u>Value</u>	<u>Skip</u>
BCINFO	Contact person information for1 Type B/C Noninterview		[continue interview]

- **SPECIAL INSTRUCTIONS**

Store name in CP1NAME. Allow 42 characters. Blank fill “don’t know” (D) and “refusal” (R).

Store title in CP1TITL. Allow 20 characters.

Store line 1 of address in CP1ADD1. Allow 54 characters.

Store line 2 of address in CP1ADD2. Allow 54 characters.

Store city in CP1PO. Allow 20 characters.

Store state in CP1ST. Allow standard two-character state abbreviations.

Store ZIP code in CP1ZP5. Allow five numeric characters.

Store ZIP4 in CP1ZP4. Allow four numeric characters.

Store area code and phone number in CP1PHON. Allow ten numeric characters.

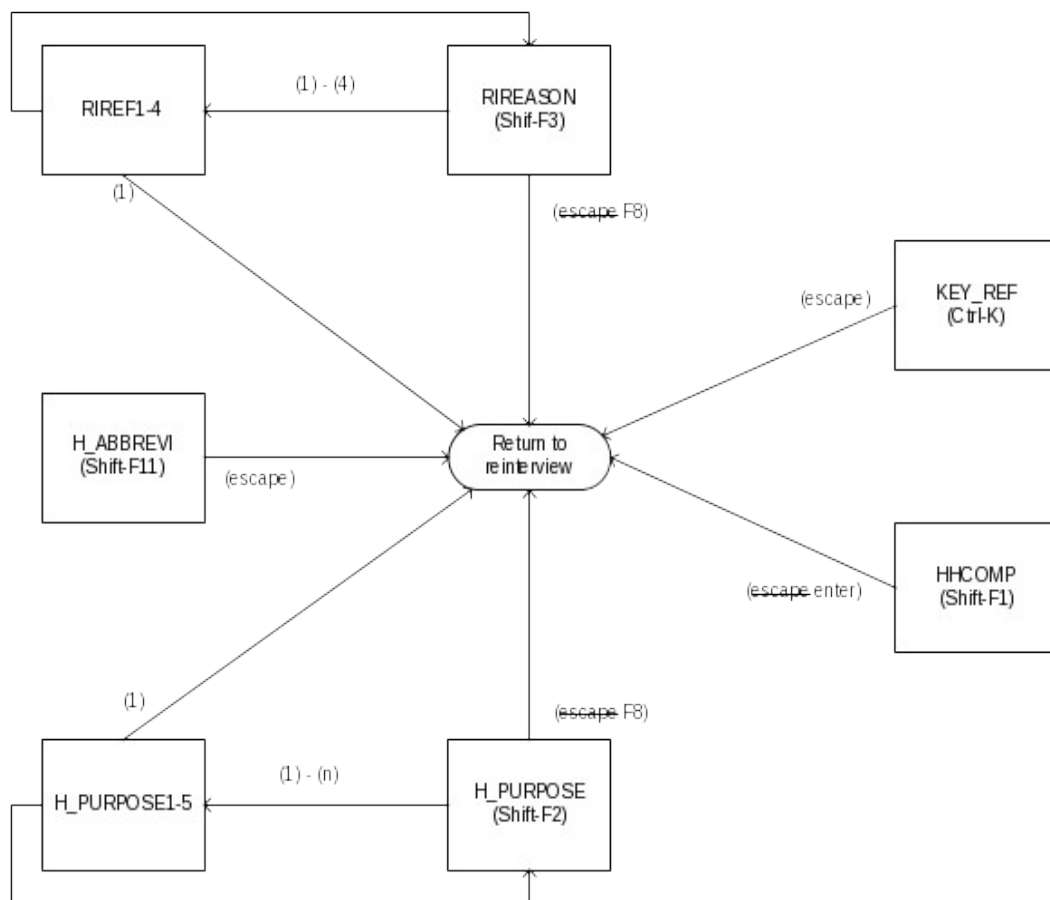
Store extension in CP1EXT. Allow five numeric characters.

Collect this information each interview period.

CEQ 2007 Reinterview Instrument Flowcharts

Attachment B
p. 1

Reference Screens

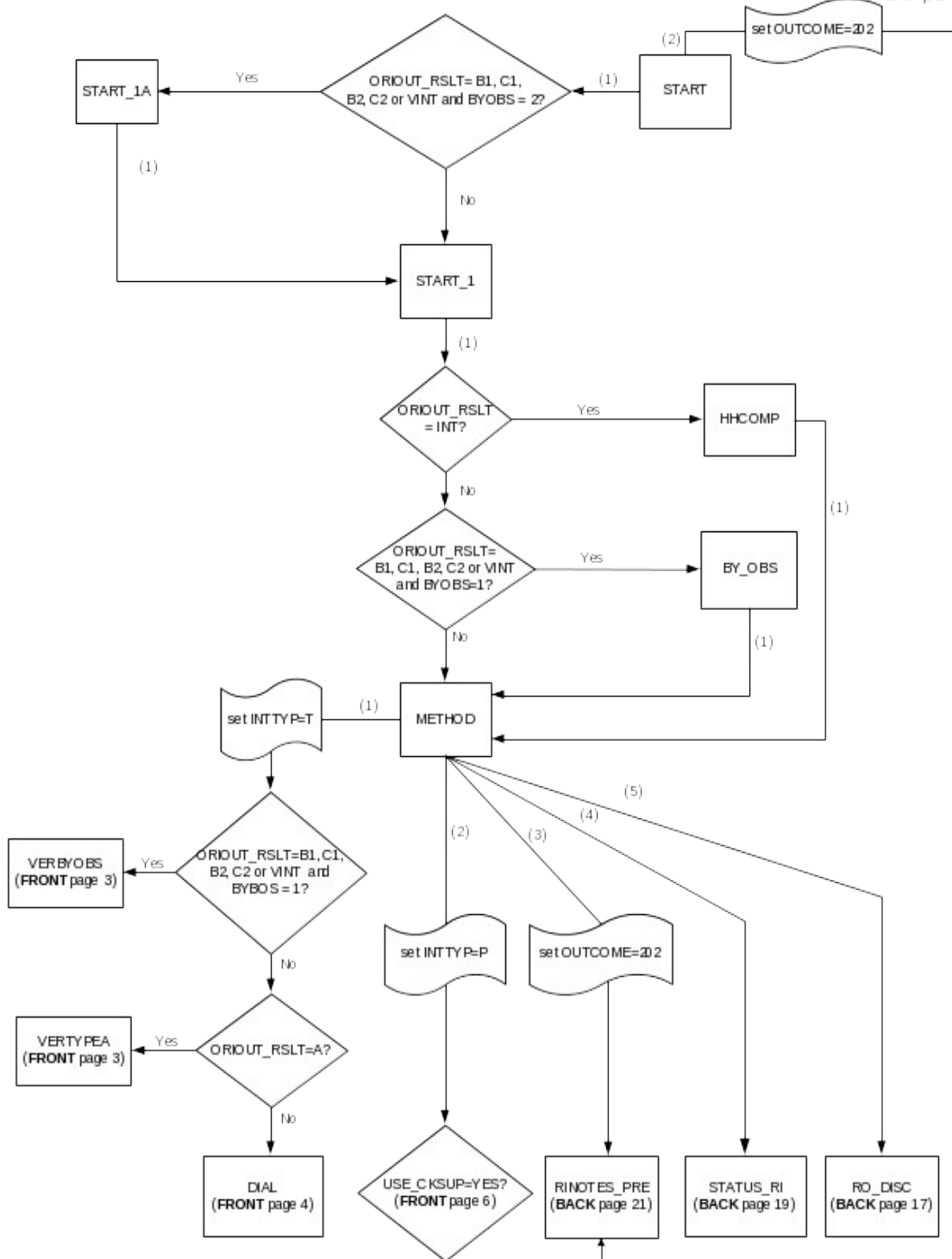


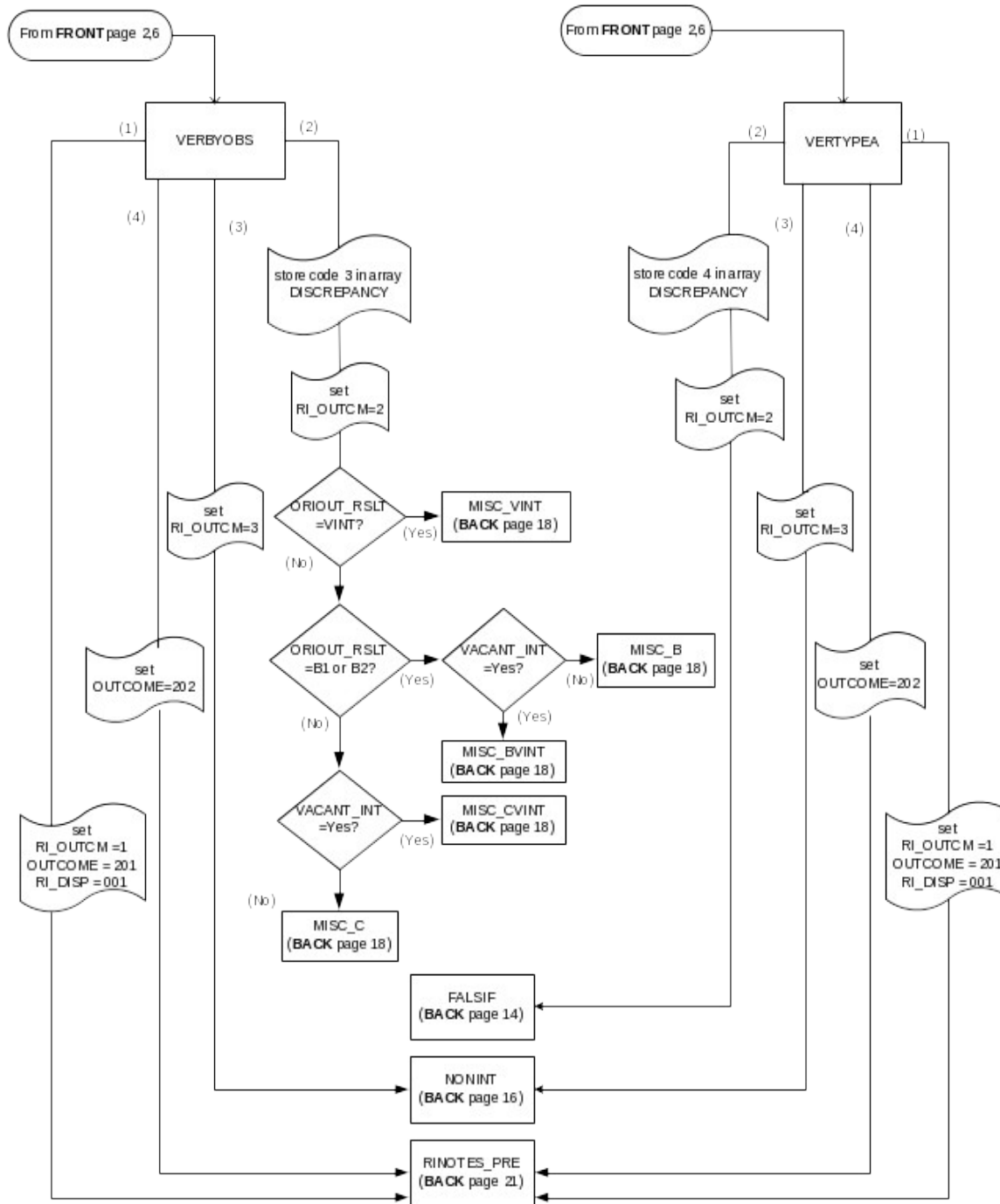
Text Files

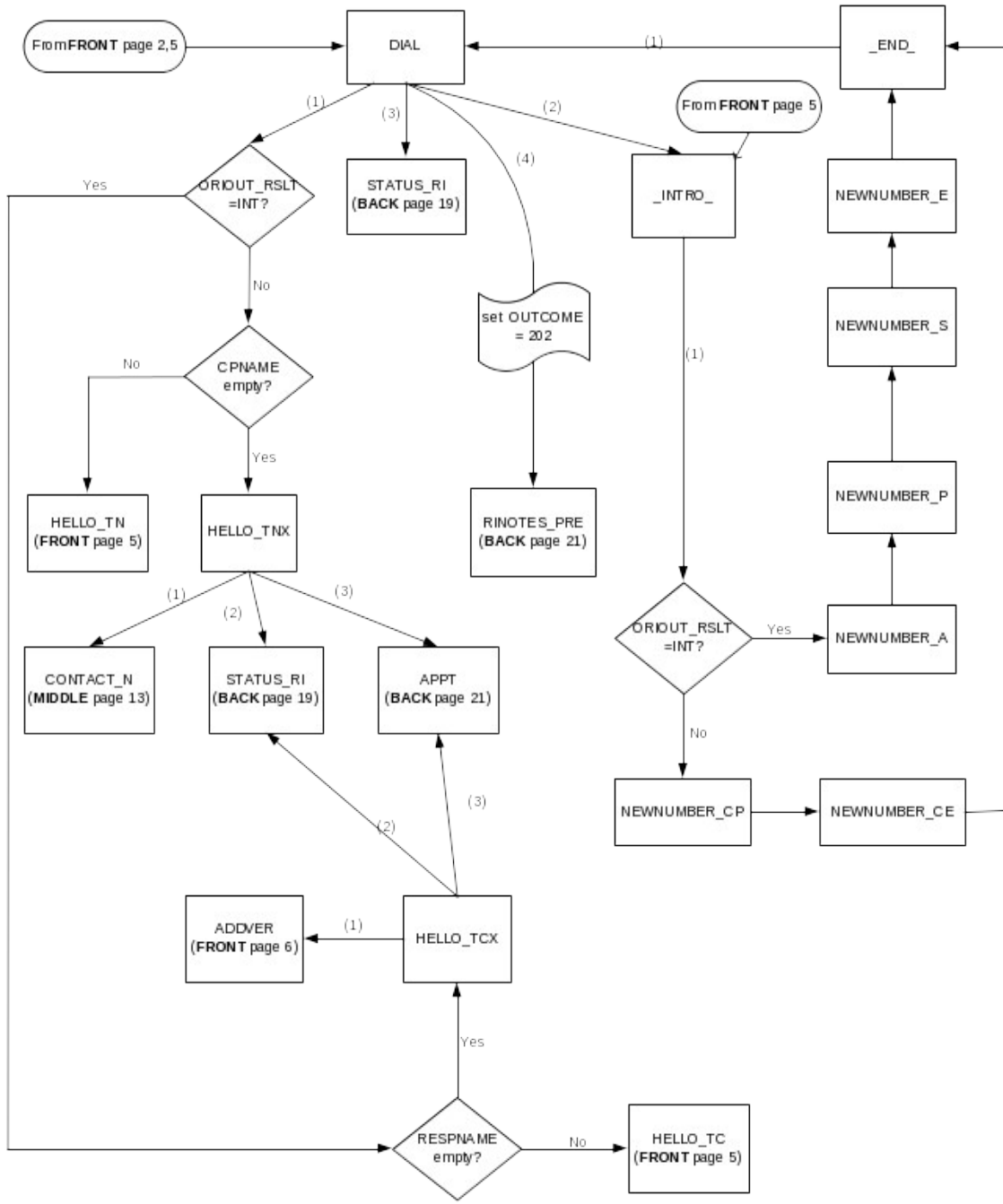


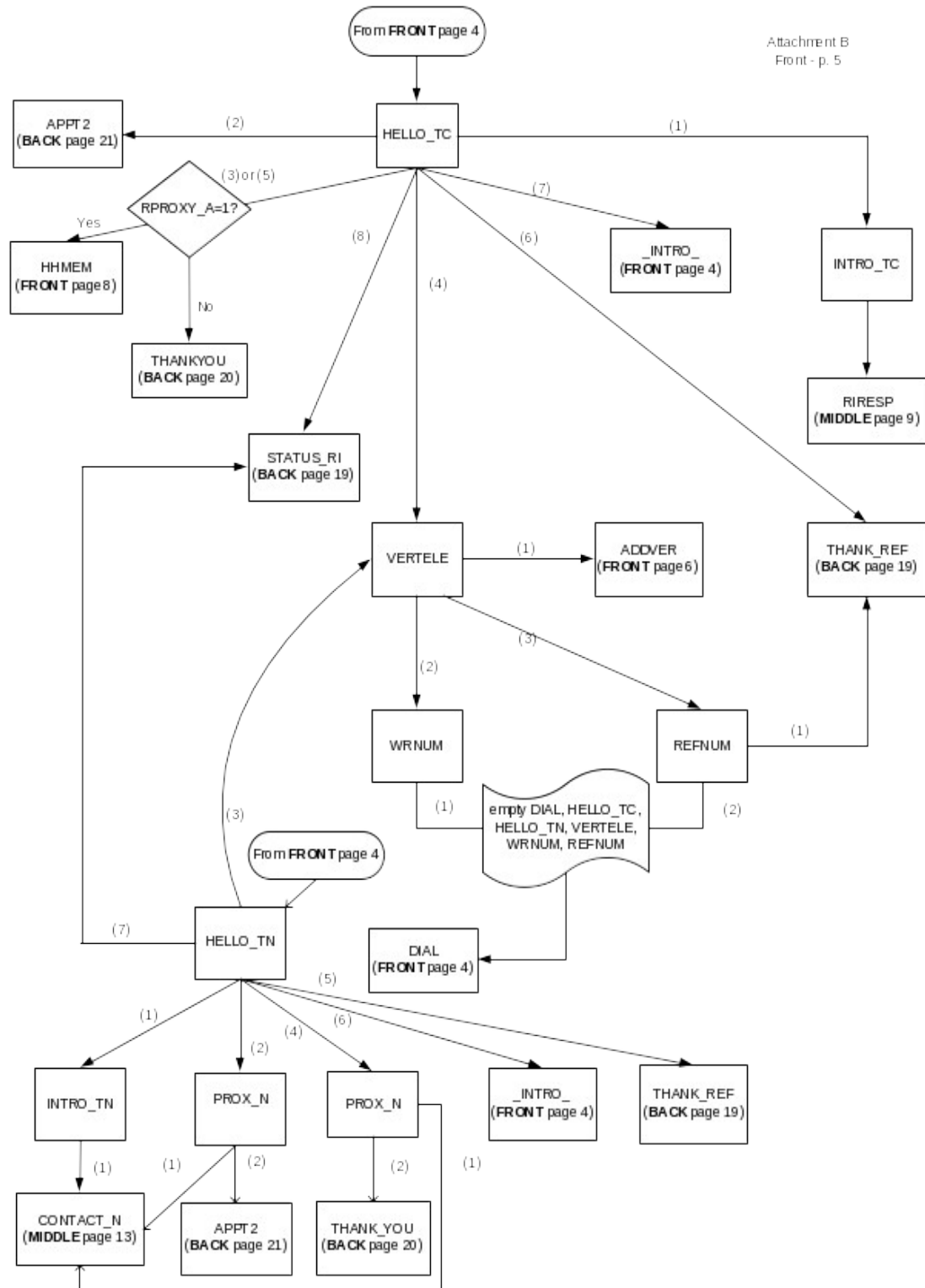
CEQ 2006 Reinterview
Reinterview Instrument Flowcharts -- Front

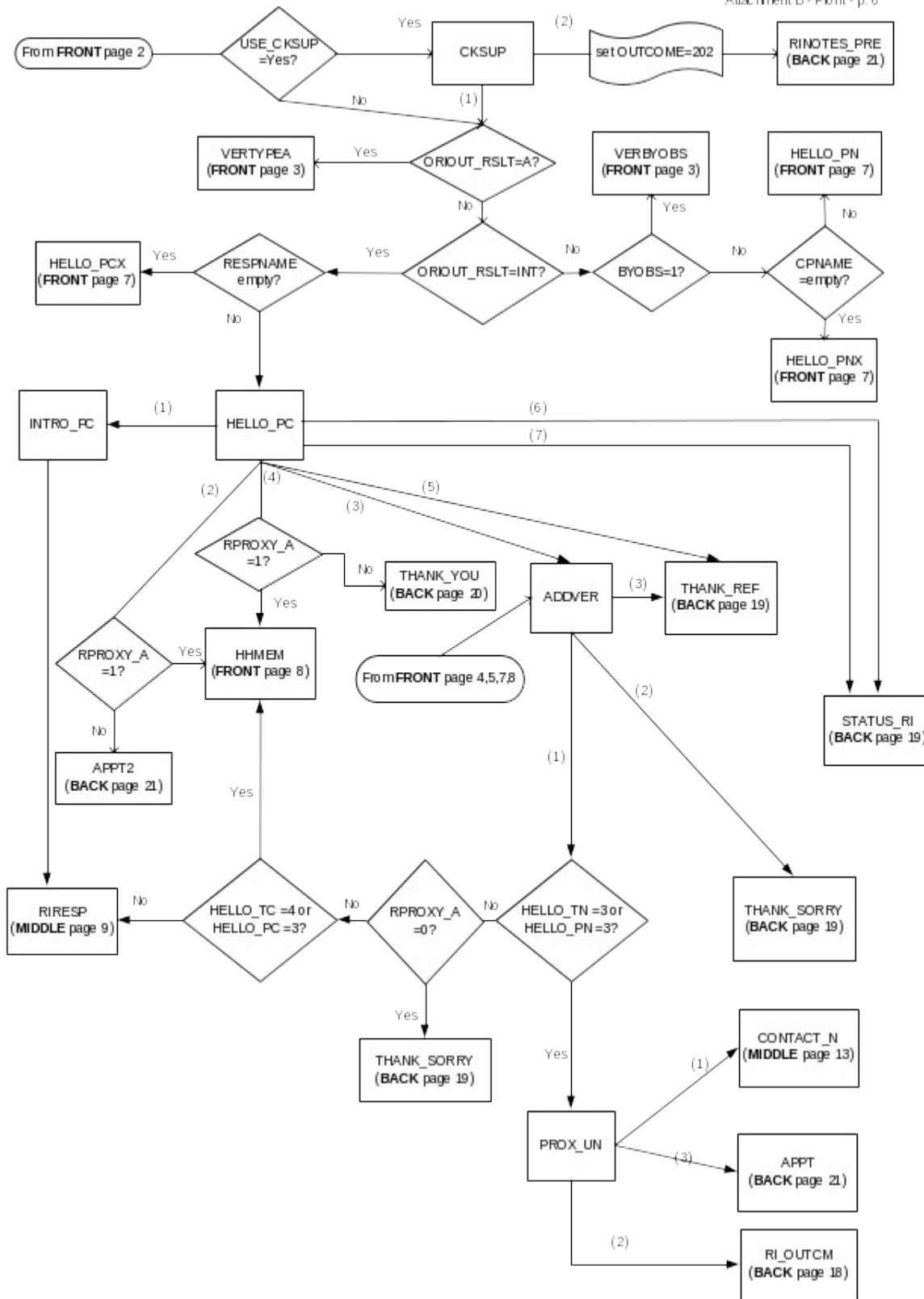
Attachment B
Front - p. 2

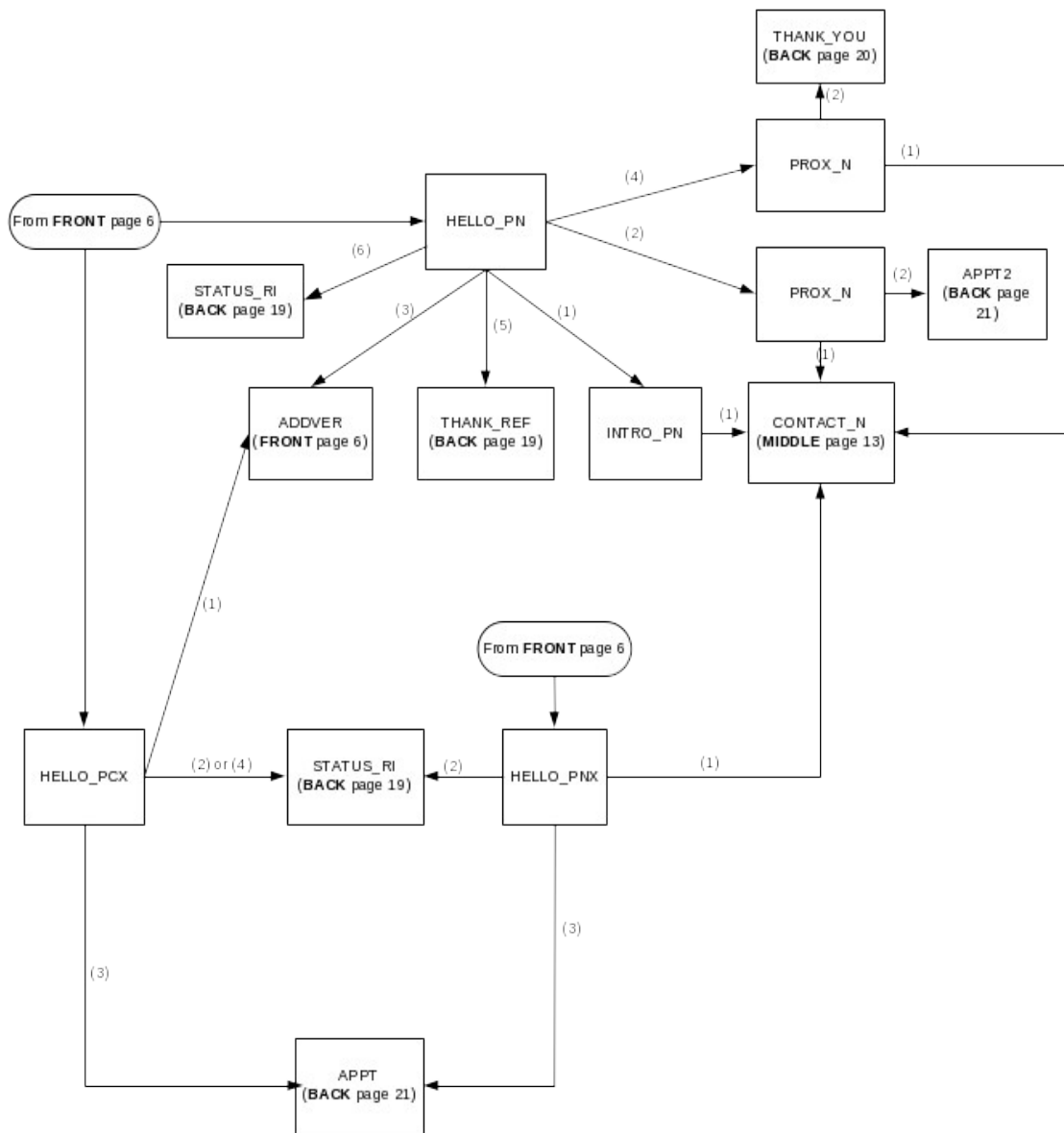


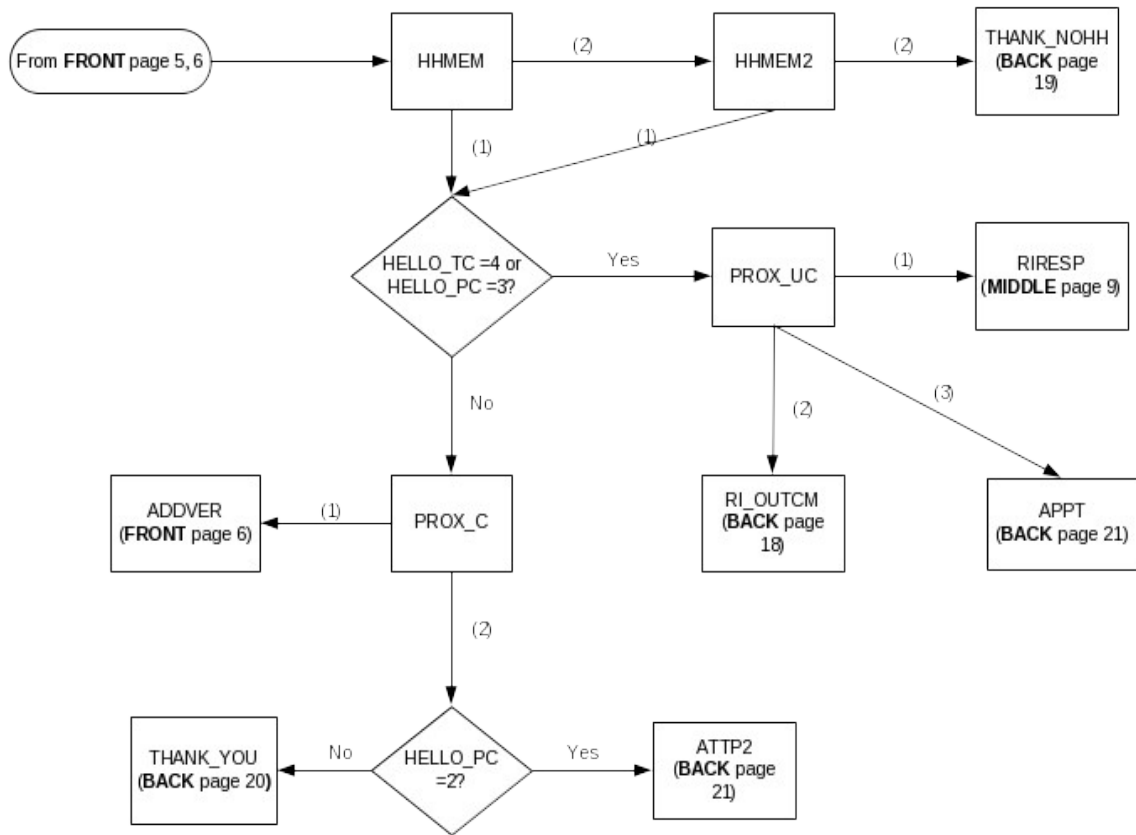






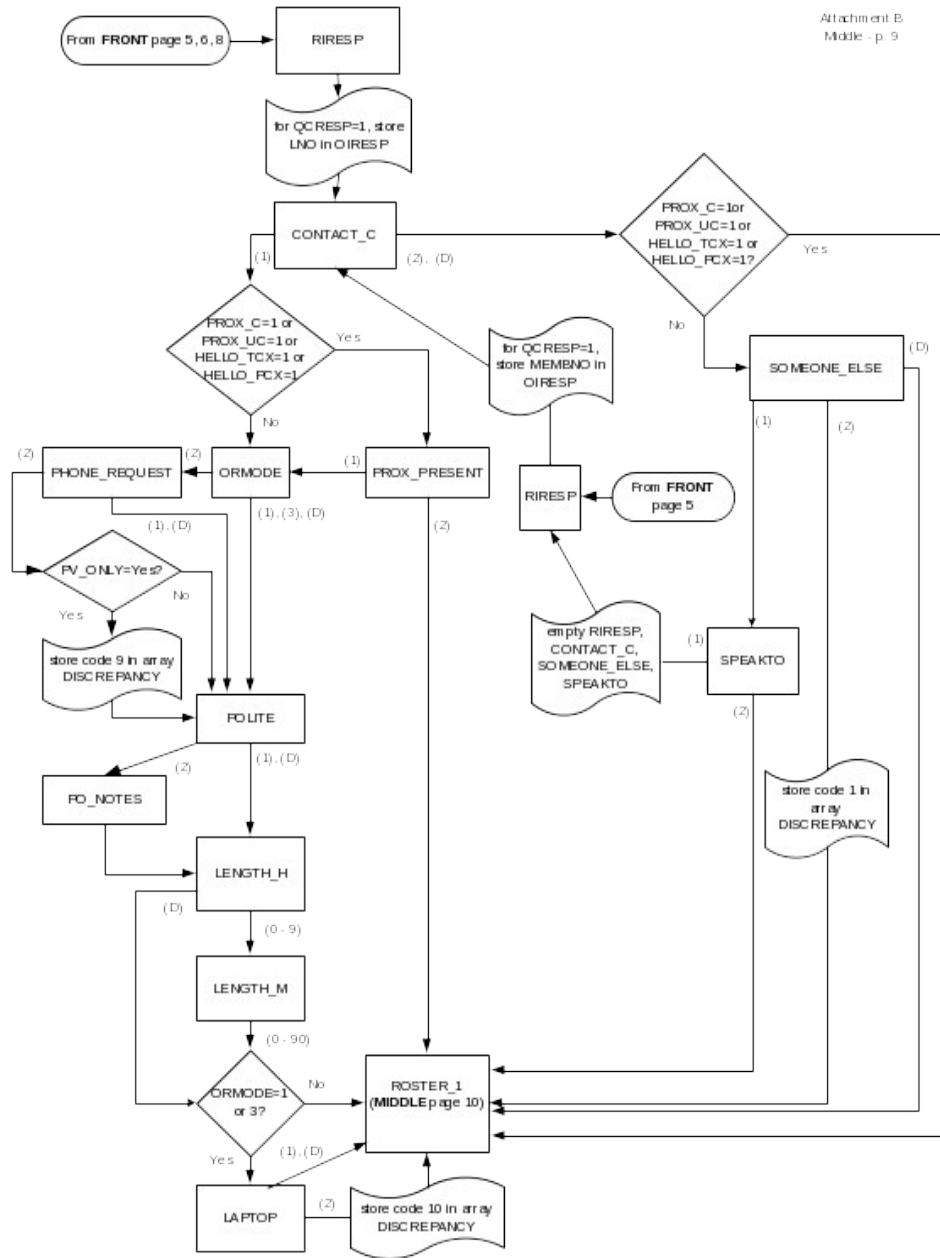


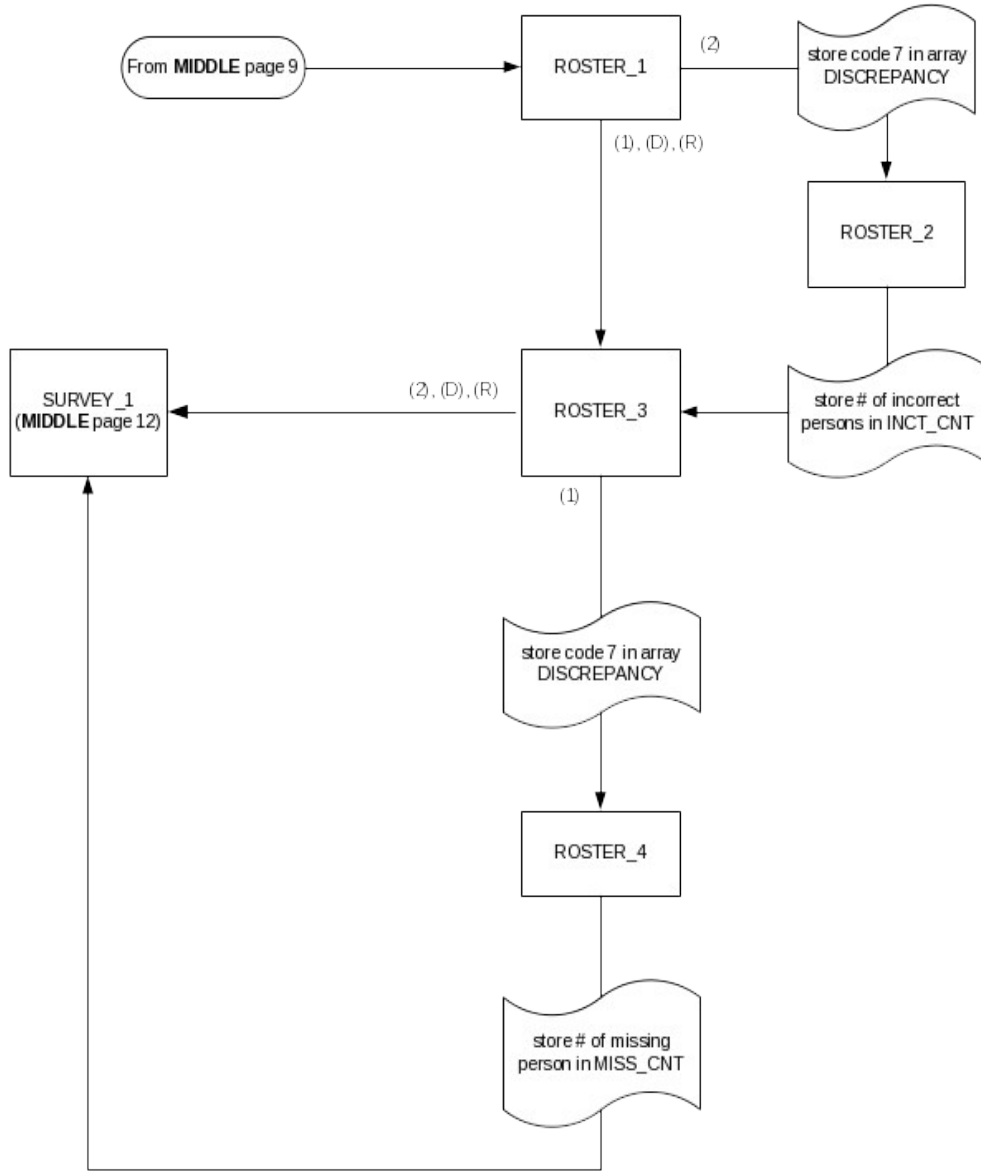


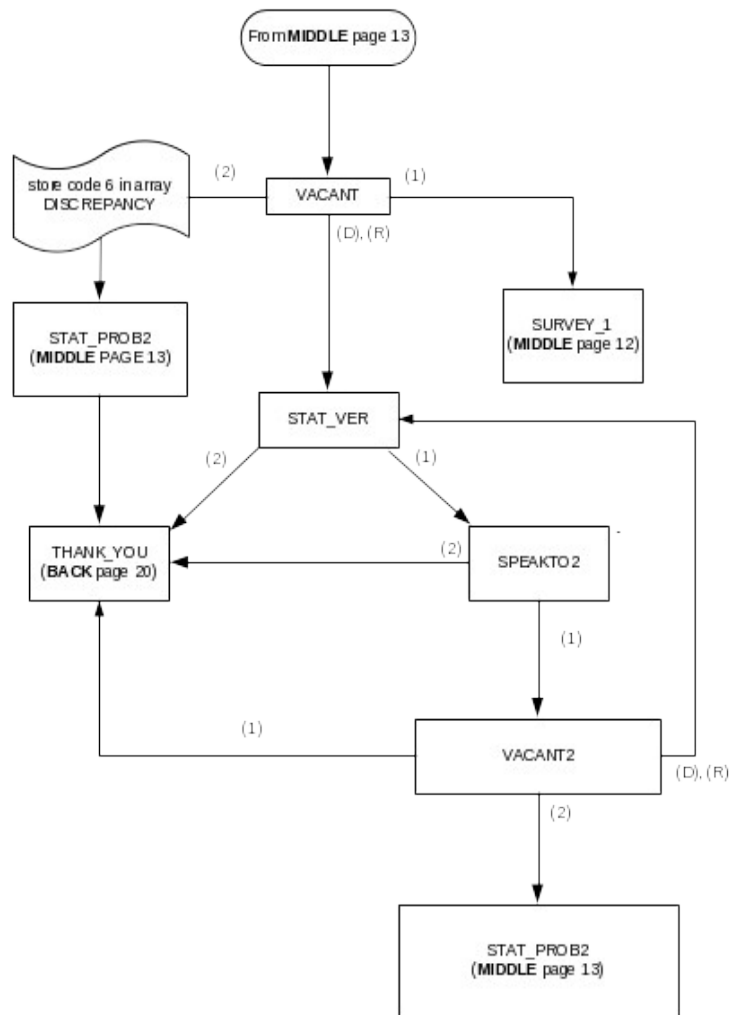


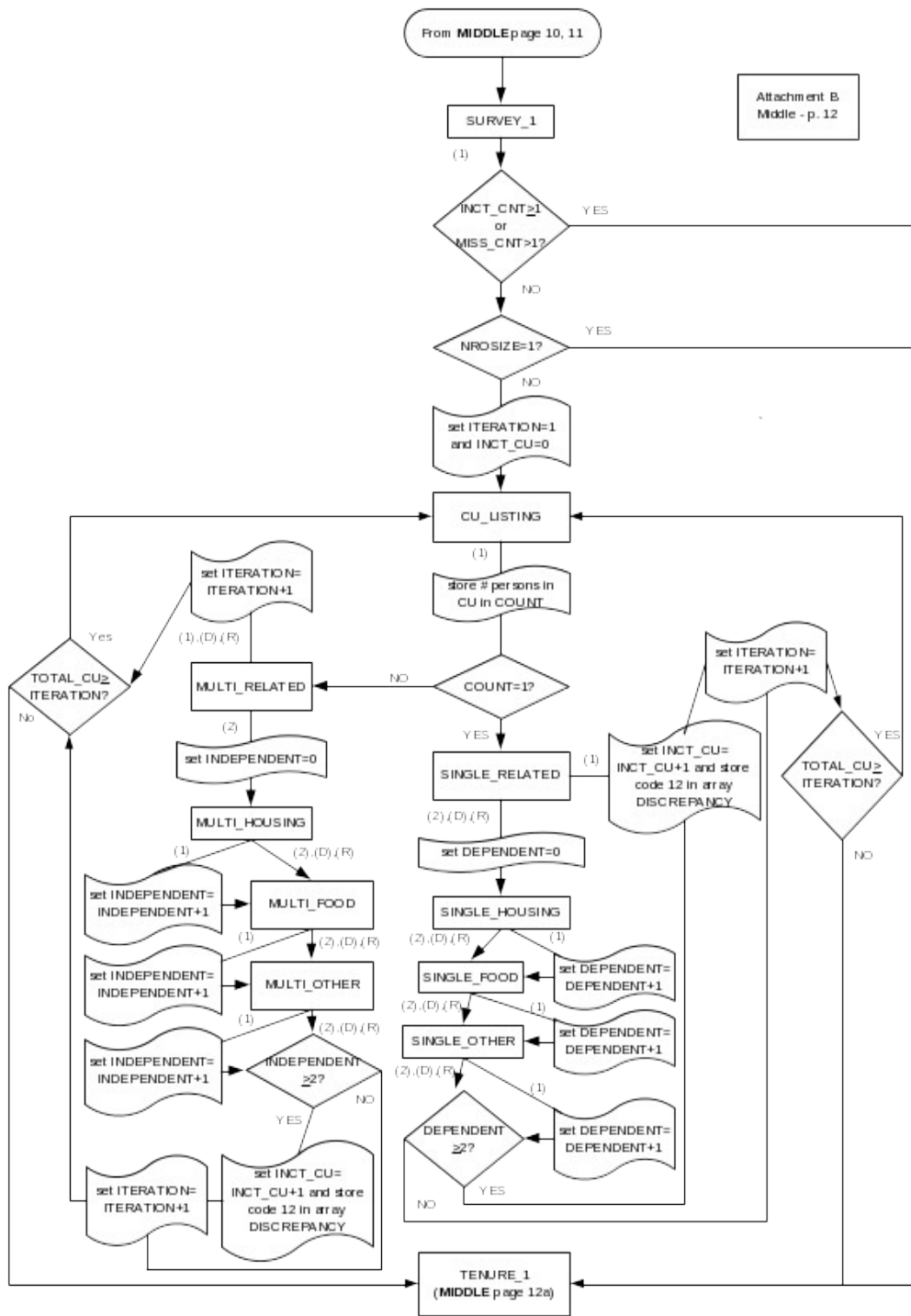
CEQ 2006 Reinterview Instrument Flowcharts -- Middle

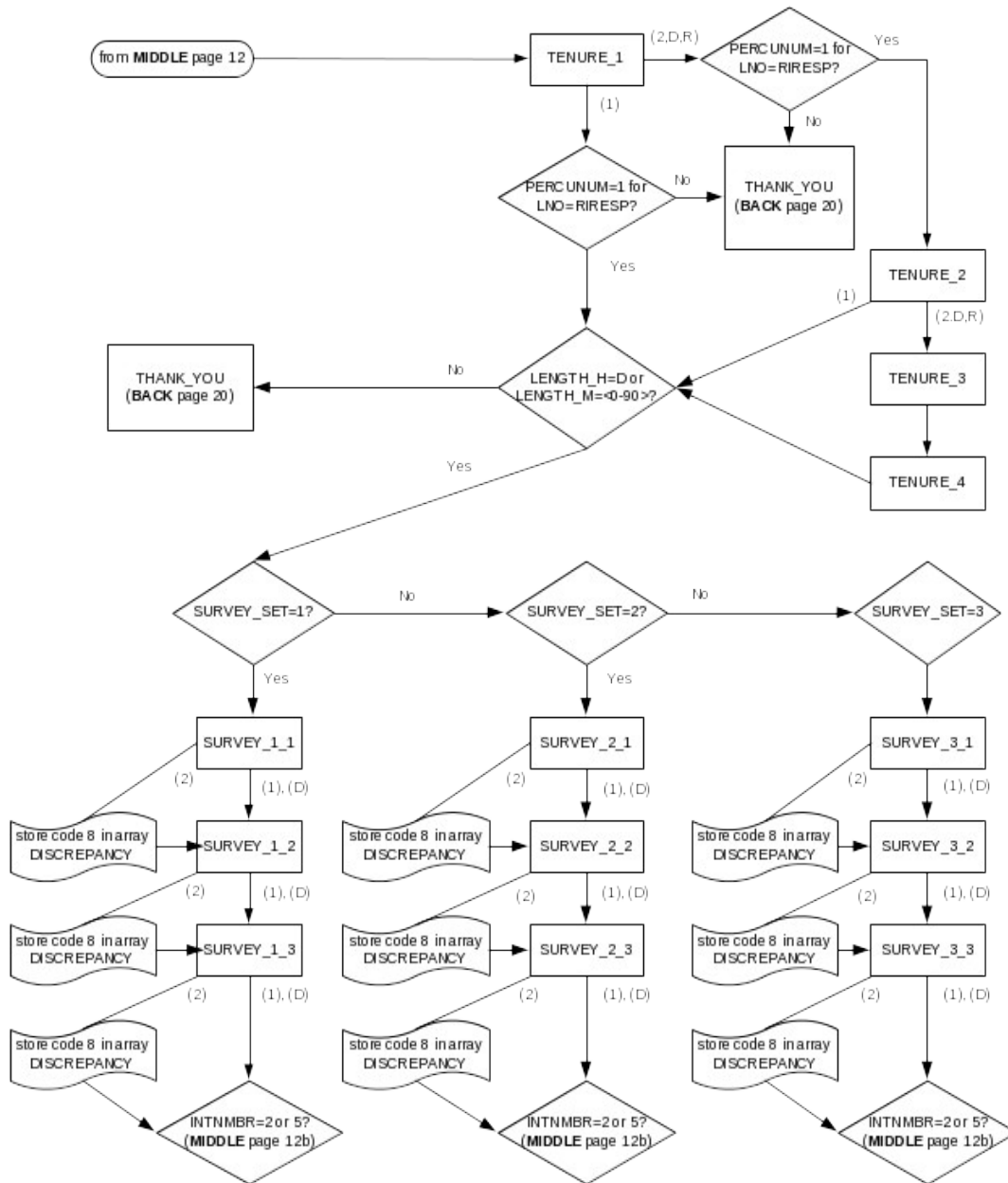
Attachment B
Middle - p. 9

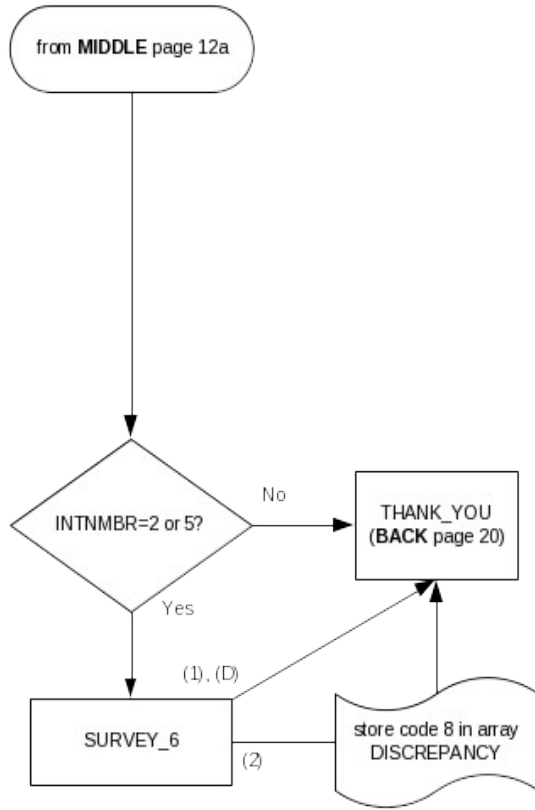


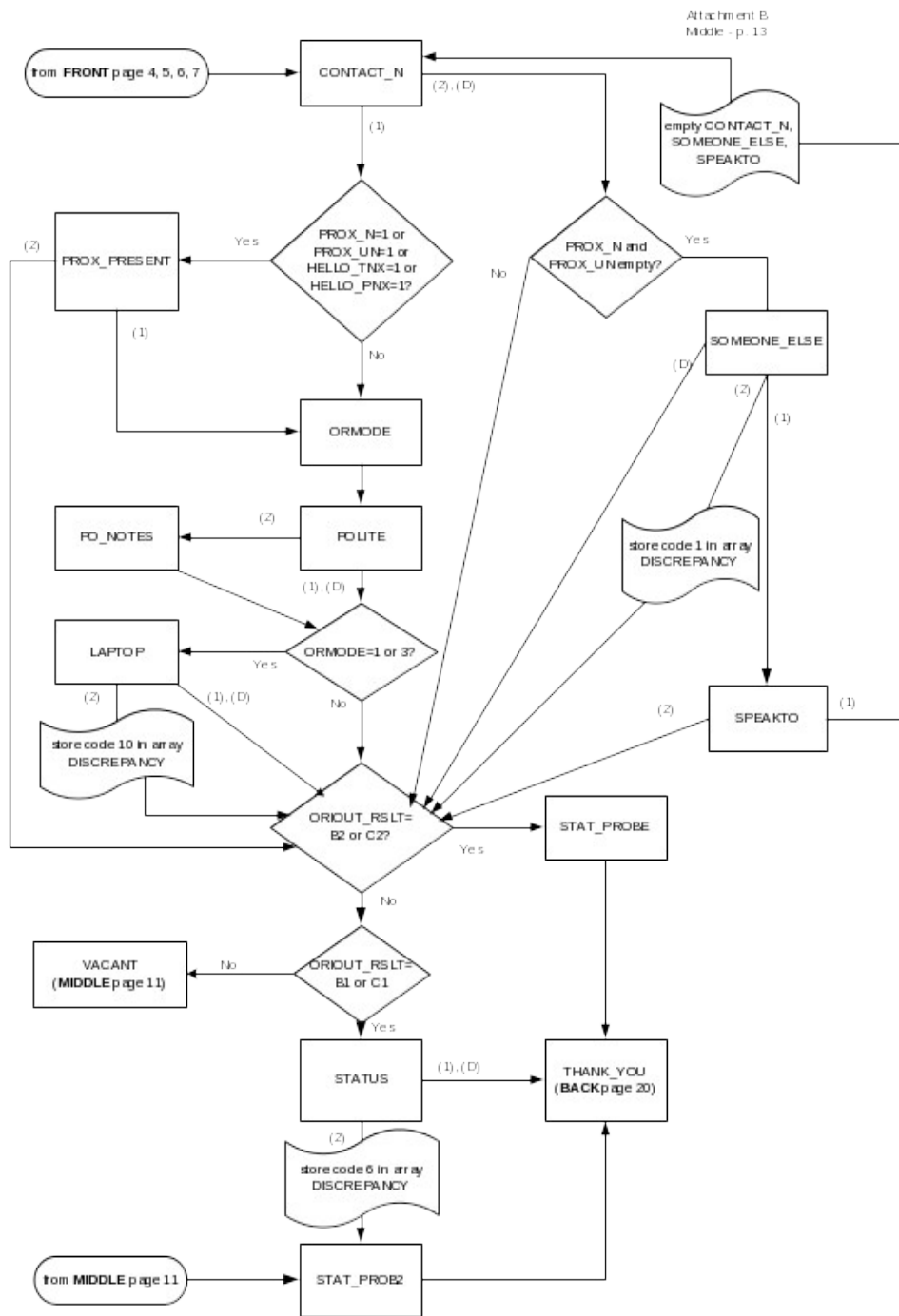








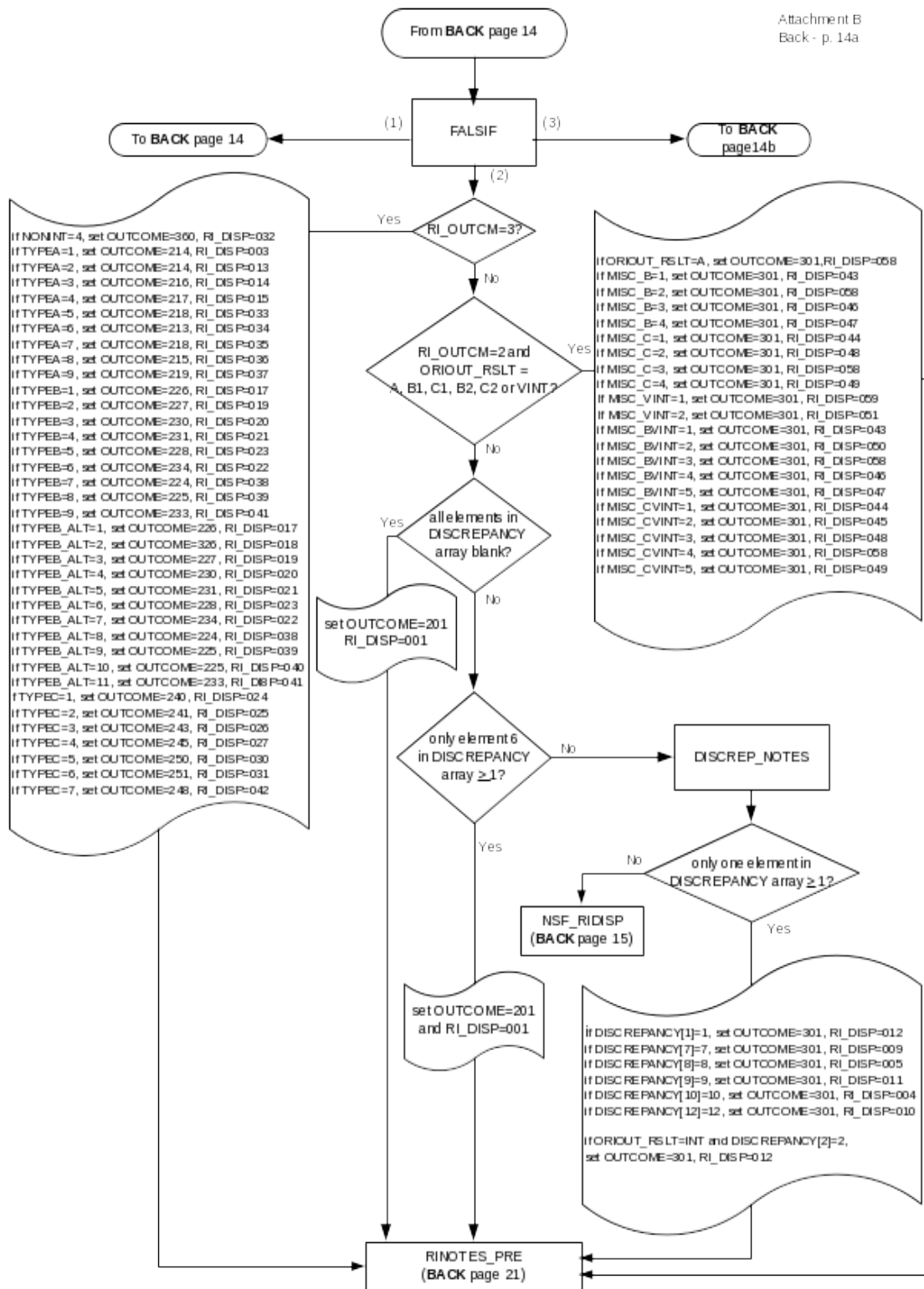


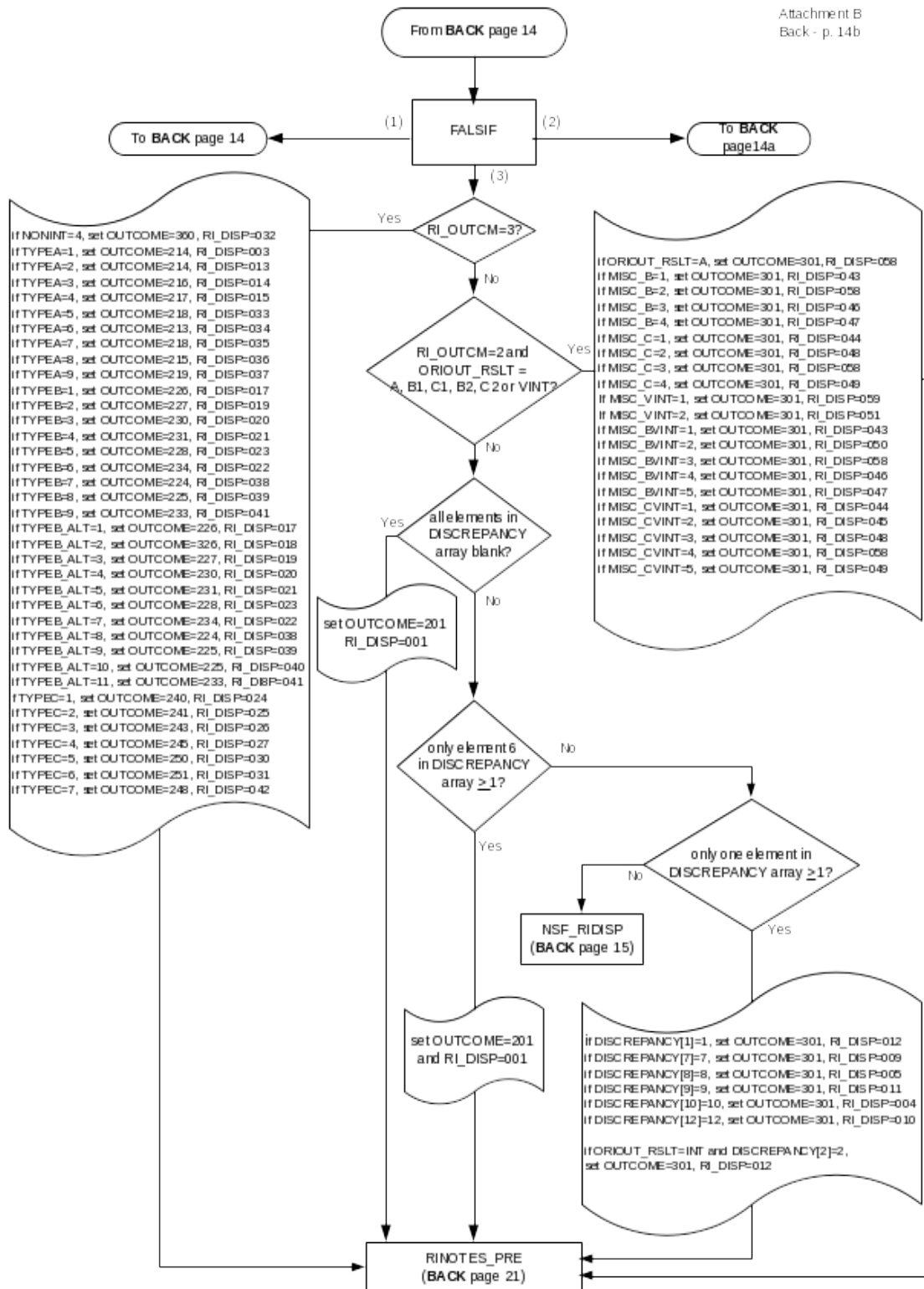


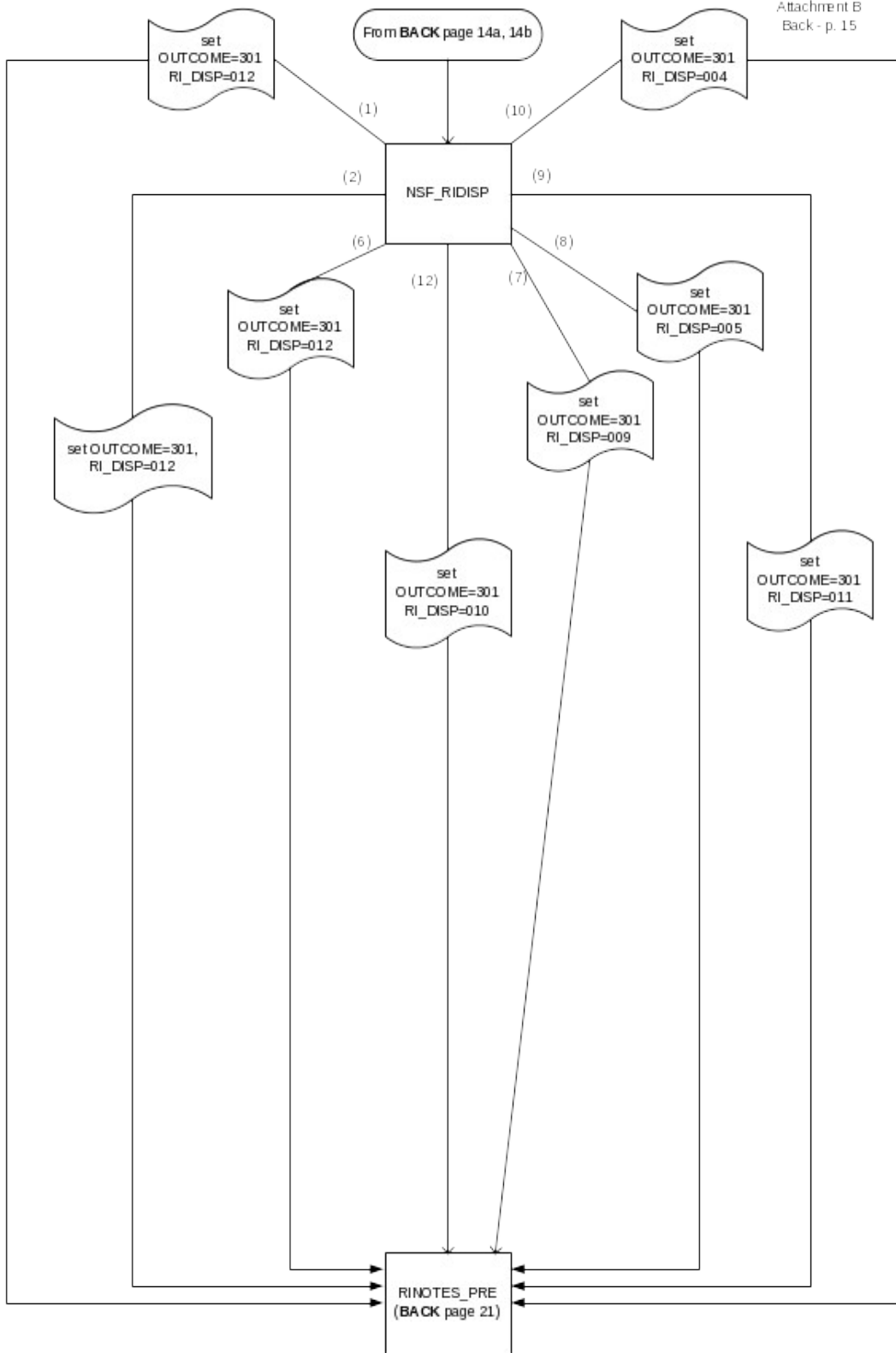
CEQ 2006 Reinterview Instrument Flowcharts -- Back

Attachment B
Back - p.14









Attachment B
Back - p. 16

