



# Catfish Feed Deliveries

---

Released July 21, 2010, by the National Agricultural Statistics Service (NASS), Agricultural Statistics Board, U.S. Department of Agriculture. For information on *Catfish Feed Deliveries* call Charles Butler at 601-965-4575, office hours 8:00 a.m. to 4:30 p.m. CT.

## June 2010 Catfish Feed Deliveries Down 11 Percent from Last Year

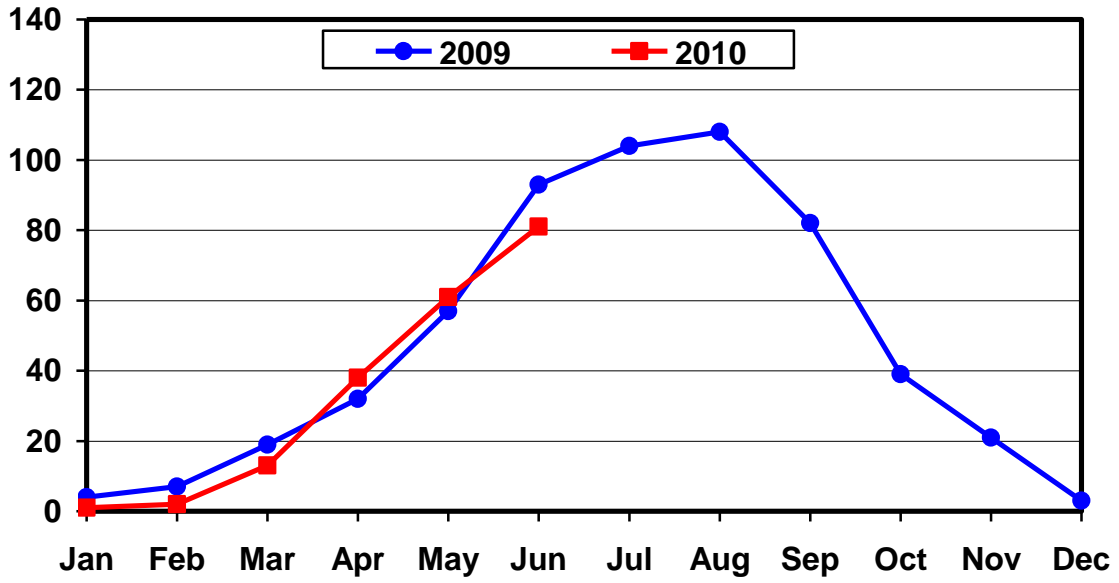
Total catfish feed delivered in the United States during June was 85,686 tons, down 11 percent from June 2009, but up 34 percent from the previous month. Foodsize catfish feed delivered totaled 80,769 tons, down 13 percent from the corresponding month a year ago. Feed delivered for fingerlings and broodfish totaled 4,917 tons, up 54 percent from the corresponding month a year ago.

June feed delivered to Mississippi catfish growers for foodsize fish totaled 39,337 tons, down 13 percent from last year. Mississippi accounted for 49 percent of the total foodsize catfish feed delivered to U.S. farmers.

The other major States with catfish feed deliveries for foodsize fish in June and their comparison to the previous year were Alabama with 27,165 tons, down 6 percent; Arkansas with 7,102 tons, down 35 percent; and Louisiana with 735 tons, down 53 percent.

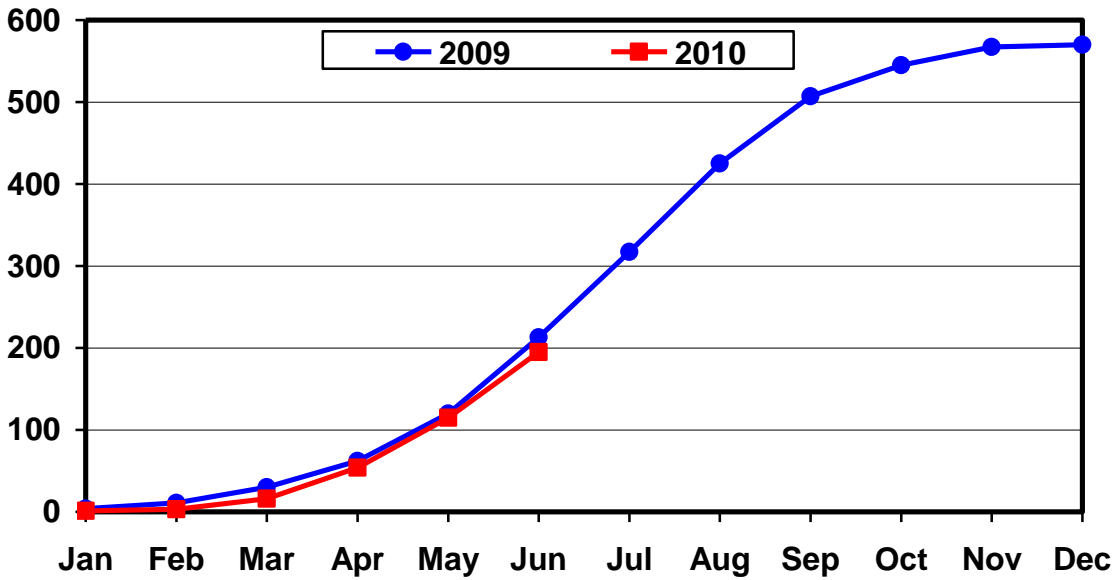
### U. S. Quantity of Foodsize Catfish Feed Delivered, Monthly Totals

Thousand Tons



### U.S. Quantity of Foodsize Catfish Feed Delivered, Cumulative Totals

Thousand Tons



**Catfish Feed: Tons Delivered For Foodsize Fish,  
United States, 2009-2010**

| Month | By Month    |             | Percent of<br>Previous<br>Year | Cumulative  |             | Percent of<br>Previous<br>Year |
|-------|-------------|-------------|--------------------------------|-------------|-------------|--------------------------------|
|       | 2009        | 2010        |                                | 2009        | 2010        |                                |
|       | <i>Tons</i> | <i>Tons</i> | <i>Percent</i>                 | <i>Tons</i> | <i>Tons</i> | <i>Percent</i>                 |
| Jan   | 4,455       | 1,433       | 32                             | 4,455       | 1,433       | 32                             |
| Feb   | 7,034       | 1,528       | 22                             | 11,489      | 2,961       | 26                             |
| Mar   | 18,927      | 12,680      | 67                             | 30,416      | 15,641      | 51                             |
| Apr   | 31,621      | 38,080      | 120                            | 62,037      | 53,721      | 87                             |
| May   | 57,466      | 60,913      | 106                            | 119,503     | 114,634     | 96                             |
| Jun   | 93,123      | 80,769      | 87                             | 212,626     | 195,403     | 92                             |
| Jul   | 104,060     |             |                                | 316,686     |             |                                |
| Aug   | 107,840     |             |                                | 424,526     |             |                                |
| Sep   | 82,125      |             |                                | 506,651     |             |                                |
| Oct   | 38,828      |             |                                | 545,479     |             |                                |
| Nov   | 21,280      |             |                                | 566,759     |             |                                |
| Dec   | 3,221       |             |                                | 569,980     |             |                                |

**Catfish Feed: Tons Delivered For Fingerlings and Broodfish,  
United States, 2009-2010 <sup>1</sup>**

| Month | By Month    |             | Percent of<br>Previous<br>Year | Cumulative  |             | Percent of<br>Previous<br>Year |
|-------|-------------|-------------|--------------------------------|-------------|-------------|--------------------------------|
|       | 2009        | 2010        |                                | 2009        | 2010        |                                |
|       | <i>Tons</i> | <i>Tons</i> | <i>Percent</i>                 | <i>Tons</i> | <i>Tons</i> | <i>Percent</i>                 |
| Jan   | 254         | 59          | 23                             | 254         | 59          | 23                             |
| Feb   | 268         | 142         | 53                             | 522         | 201         | 39                             |
| Mar   | 927         | 900         | 97                             | 1,449       | 1,101       | 76                             |
| Apr   | 1,116       | 2,065       | 185                            | 2,565       | 3,166       | 123                            |
| May   | 1,774       | 3,198       | 180                            | 4,339       | 6,364       | 147                            |
| Jun   | 3,191       | 4,917       | 154                            | 7,530       | 11,281      | 150                            |
| Jul   | 4,209       |             |                                | 11,739      |             |                                |
| Aug   | 5,453       |             |                                | 17,192      |             |                                |
| Sep   | 3,513       |             |                                | 20,705      |             |                                |
| Oct   | 1,358       |             |                                | 22,063      |             |                                |
| Nov   | 1,314       |             |                                | 23,377      |             |                                |
| Dec   | 133         |             |                                | 23,510      |             |                                |

<sup>1</sup> The sum of the published States may not equal the total to avoid disclosure of individual operations.

**Catfish Feed: Tons Delivered For Foodsize Fish,  
Alabama, 2009-2010**

| Month | By Month    |             | Percent of<br>Previous<br>Year | Cumulative  |             | Percent of<br>Previous<br>Year |
|-------|-------------|-------------|--------------------------------|-------------|-------------|--------------------------------|
|       | 2009        | 2010        |                                | 2009        | 2010        |                                |
|       | <i>Tons</i> | <i>Tons</i> | <i>Percent</i>                 | <i>Tons</i> | <i>Tons</i> | <i>Percent</i>                 |
| Jan   | 1,992       | 392         | 20                             | 1,992       | 392         | 20                             |
| Feb   | 2,490       | 599         | 24                             | 4,482       | 991         | 22                             |
| Mar   | 7,290       | 3,472       | 48                             | 11,772      | 4,463       | 38                             |
| Apr   | 10,891      | 12,416      | 114                            | 22,663      | 16,879      | 74                             |
| May   | 17,599      | 19,589      | 111                            | 40,262      | 36,468      | 91                             |
| Jun   | 29,018      | 27,165      | 94                             | 69,280      | 63,633      | 92                             |
| Jul   | 36,818      |             |                                | 106,098     |             |                                |
| Aug   | 32,334      |             |                                | 138,432     |             |                                |
| Sep   | 24,546      |             |                                | 162,978     |             |                                |
| Oct   | 14,442      |             |                                | 177,420     |             |                                |
| Nov   | 8,762       |             |                                | 186,182     |             |                                |
| Dec   | 2,404       |             |                                | 188,586     |             |                                |

**Catfish Feed: Tons Delivered For Foodsize Fish,  
Arkansas, 2009-2010**

| Month | By Month    |             | Percent of<br>Previous<br>Year | Cumulative  |             | Percent of<br>Previous<br>Year |
|-------|-------------|-------------|--------------------------------|-------------|-------------|--------------------------------|
|       | 2009        | 2010        |                                | 2009        | 2010        |                                |
|       | <i>Tons</i> | <i>Tons</i> | <i>Percent</i>                 | <i>Tons</i> | <i>Tons</i> | <i>Percent</i>                 |
| Jan   | 165         | 76          | 46                             | 165         | 76          | 46                             |
| Feb   | 509         | 75          | 15                             | 674         | 151         | 22                             |
| Mar   | 2,084       | 1,406       | 67                             | 2,758       | 1,557       | 56                             |
| Apr   | 3,922       | 4,087       | 104                            | 6,680       | 5,644       | 84                             |
| May   | 7,437       | 6,336       | 85                             | 14,117      | 11,980      | 85                             |
| Jun   | 10,882      | 7,102       | 65                             | 24,999      | 19,082      | 76                             |
| Jul   | 10,429      |             |                                | 35,428      |             |                                |
| Aug   | 14,450      |             |                                | 49,878      |             |                                |
| Sep   | 9,502       |             |                                | 59,380      |             |                                |
| Oct   | 2,916       |             |                                | 62,296      |             |                                |
| Nov   | 1,310       |             |                                | 63,606      |             |                                |
| Dec   | 97          |             |                                | 63,703      |             |                                |

**Catfish Feed: Tons Delivered For Fingerlings and Broodfish,  
Arkansas, 2009-2010**

| Month | By Month    |             | Percent of<br>Previous<br>Year | Cumulative  |             | Percent of<br>Previous<br>Year |
|-------|-------------|-------------|--------------------------------|-------------|-------------|--------------------------------|
|       | 2009        | 2010        |                                | 2009        | 2010        |                                |
|       | <i>Tons</i> | <i>Tons</i> | <i>Percent</i>                 | <i>Tons</i> | <i>Tons</i> | <i>Percent</i>                 |
| Jan   | 50          | 27          | 54                             | 50          | 27          | 54                             |
| Feb   | 156         | 122         | 78                             | 206         | 149         | 72                             |
| Mar   | 314         | 552         | 176                            | 520         | 701         | 135                            |
| Apr   | 144         | 718         | 499                            | 664         | 1,419       | 214                            |
| May   | 173         | 789         | 456                            | 837         | 2,208       | 264                            |
| Jun   | 283         | 474         | 167                            | 1,120       | 2,682       | 239                            |
| Jul   | 637         |             |                                | 1,757       |             |                                |
| Aug   | 820         |             |                                | 2,577       |             |                                |
| Sep   | 389         |             |                                | 2,966       |             |                                |
| Oct   | 310         |             |                                | 3,276       |             |                                |
| Nov   | 255         |             |                                | 3,531       |             |                                |
| Dec   | 117         |             |                                | 3,648       |             |                                |

**Catfish Feed: Tons Delivered For Foodsize Fish,  
Louisiana, 2009-2010**

| Month | By Month    |             | Percent of<br>Previous<br>Year | Cumulative  |             | Percent of<br>Previous<br>Year |
|-------|-------------|-------------|--------------------------------|-------------|-------------|--------------------------------|
|       | 2009        | 2010        |                                | 2009        | 2010        |                                |
|       | <i>Tons</i> | <i>Tons</i> | <i>Percent</i>                 | <i>Tons</i> | <i>Tons</i> | <i>Percent</i>                 |
| Jan   | 168         | 7           | 4                              | 168         | 7           | 4                              |
| Feb   | 122         | 4           | 3                              | 290         | 11          | 4                              |
| Mar   | 518         | 286         | 55                             | 808         | 297         | 37                             |
| Apr   | 1,312       | 565         | 43                             | 2,120       | 862         | 41                             |
| May   | 1,520       | 678         | 45                             | 3,640       | 1,540       | 42                             |
| Jun   | 1,556       | 735         | 47                             | 5,196       | 2,275       | 44                             |
| Jul   | 1,411       |             |                                | 6,607       |             |                                |
| Aug   | 1,601       |             |                                | 8,208       |             |                                |
| Sep   | 1,180       |             |                                | 9,388       |             |                                |
| Oct   | 116         |             |                                | 9,504       |             |                                |
| Nov   | 1,435       |             |                                | 10,939      |             |                                |
| Dec   | 12          |             |                                | 10,951      |             |                                |

**Catfish Feed: Tons Delivered For Foodsize Fish,  
Mississippi, 2009-2010**

| Month | By Month    |             | Percent of<br>Previous<br>Year | Cumulative  |             | Percent of<br>Previous<br>Year |
|-------|-------------|-------------|--------------------------------|-------------|-------------|--------------------------------|
|       | 2009        | 2010        |                                | 2009        | 2010        |                                |
|       | <i>Tons</i> | <i>Tons</i> | <i>Percent</i>                 | <i>Tons</i> | <i>Tons</i> | <i>Percent</i>                 |
| Jan   | 782         | 224         | 29                             | 782         | 224         | 29                             |
| Feb   | 2,147       | 193         | 9                              | 2,929       | 417         | 14                             |
| Mar   | 6,336       | 4,536       | 72                             | 9,265       | 4,953       | 53                             |
| Apr   | 12,628      | 17,203      | 136                            | 21,893      | 22,156      | 101                            |
| May   | 26,165      | 29,285      | 112                            | 48,058      | 51,441      | 107                            |
| Jun   | 45,116      | 39,337      | 87                             | 93,174      | 90,778      | 97                             |
| Jul   | 49,001      |             |                                | 142,175     |             |                                |
| Aug   | 53,148      |             |                                | 195,323     |             |                                |
| Sep   | 41,091      |             |                                | 236,414     |             |                                |
| Oct   | 17,762      |             |                                | 254,176     |             |                                |
| Nov   | 7,523       |             |                                | 261,699     |             |                                |
| Dec   | 222         |             |                                | 261,921     |             |                                |

**Catfish Feed: Tons Delivered For Fingerlings and Broodfish,  
Mississippi, 2009-2010**

| Month | By Month    |             | Percent of<br>Previous<br>Year | Cumulative  |             | Percent of<br>Previous<br>Year |
|-------|-------------|-------------|--------------------------------|-------------|-------------|--------------------------------|
|       | 2009        | 2010        |                                | 2009        | 2010        |                                |
|       | <i>Tons</i> | <i>Tons</i> | <i>Percent</i>                 | <i>Tons</i> | <i>Tons</i> | <i>Percent</i>                 |
| Jan   | 41          | 8           | 20                             | 41          | 8           | 20                             |
| Feb   | 73          | 2           | 3                              | 114         | 10          | 9                              |
| Mar   | 460         | 280         | 61                             | 574         | 290         | 51                             |
| Apr   | 855         | 1,134       | 133                            | 1,429       | 1,424       | 100                            |
| May   | 1,477       | 2,294       | 155                            | 2,906       | 3,718       | 128                            |
| Jun   | 2,688       | 4,287       | 159                            | 5,594       | 8,005       | 143                            |
| Jul   | 3,445       |             |                                | 9,039       |             |                                |
| Aug   | 4,479       |             |                                | 13,518      |             |                                |
| Sep   | 2,796       |             |                                | 16,314      |             |                                |
| Oct   | 952         |             |                                | 17,266      |             |                                |
| Nov   | 1,006       |             |                                | 18,272      |             |                                |
| Dec   | 1           |             |                                | 18,273      |             |                                |

**Catfish Feed: Tons Delivered For Foodsize Fish,  
Other States East of the Mississippi River, 2009-2010**

| Month | By Month    |             | Percent of<br>Previous<br>Year | Cumulative  |             | Percent of<br>Previous<br>Year |
|-------|-------------|-------------|--------------------------------|-------------|-------------|--------------------------------|
|       | 2009        | 2010        |                                | 2009        | 2010        |                                |
|       | <i>Tons</i> | <i>Tons</i> | <i>Percent</i>                 | <i>Tons</i> | <i>Tons</i> | <i>Percent</i>                 |
| Jan   | 357         | 90          | 25                             | 357         | 90          | 25                             |
| Feb   | 426         | 123         | 29                             | 783         | 213         | 27                             |
| Mar   | 967         | 715         | 74                             | 1,750       | 928         | 53                             |
| Apr   | 1,019       | 1,563       | 153                            | 2,769       | 2,491       | 90                             |
| May   | 1,504       | 1,540       | 102                            | 4,273       | 4,031       | 94                             |
| Jun   | 2,023       | 2,009       | 99                             | 6,296       | 6,040       | 96                             |
| Jul   | 2,272       |             |                                | 8,568       |             |                                |
| Aug   | 2,449       |             |                                | 11,017      |             |                                |
| Sep   | 2,453       |             |                                | 13,470      |             |                                |
| Oct   | 1,255       |             |                                | 14,725      |             |                                |
| Nov   | 425         |             |                                | 15,150      |             |                                |
| Dec   | 128         |             |                                | 15,278      |             |                                |



**Catfish Feed: Tons Delivered For Foodsize Fish,  
Other States West of the Mississippi River, 2009-2010**

| Month | By Month    |             | Percent of<br>Previous<br>Year | Cumulative  |             | Percent of<br>Previous<br>Year |
|-------|-------------|-------------|--------------------------------|-------------|-------------|--------------------------------|
|       | 2009        | 2010        |                                | 2009        | 2010        |                                |
|       | <i>Tons</i> | <i>Tons</i> | <i>Percent</i>                 | <i>Tons</i> | <i>Tons</i> | <i>Percent</i>                 |
| Jan   | 991         | 644         | 65                             | 991         | 644         | 65                             |
| Feb   | 1,340       | 534         | 40                             | 2,331       | 1,178       | 51                             |
| Mar   | 1,732       | 2,265       | 131                            | 4,063       | 3,443       | 85                             |
| Apr   | 1,849       | 2,246       | 121                            | 5,912       | 5,689       | 96                             |
| May   | 3,241       | 3,485       | 108                            | 9,153       | 9,174       | 100                            |
| Jun   | 4,528       | 4,421       | 98                             | 13,681      | 13,595      | 99                             |
| Jul   | 4,129       |             |                                | 17,810      |             |                                |
| Aug   | 3,858       |             |                                | 21,668      |             |                                |
| Sep   | 3,353       |             |                                | 25,021      |             |                                |
| Oct   | 2,337       |             |                                | 27,358      |             |                                |
| Nov   | 1,825       |             |                                | 29,183      |             |                                |
| Dec   | 358         |             |                                | 29,541      |             |                                |

**Catfish Feed: Tons Delivered For Fingerlings and Broodfish,  
Other States West of the Mississippi River, 2009-2010**

| Month | By Month    |             | Percent of<br>Previous<br>Year | Cumulative  |             | Percent of<br>Previous<br>Year |
|-------|-------------|-------------|--------------------------------|-------------|-------------|--------------------------------|
|       | 2009        | 2010        |                                | 2009        | 2010        |                                |
|       | <i>Tons</i> | <i>Tons</i> | <i>Percent</i>                 | <i>Tons</i> | <i>Tons</i> | <i>Percent</i>                 |
| Jan   | 143         | 2           | 1                              | 143         | 2           | 1                              |
| Feb   | 7           | 2           | 29                             | 150         | 4           | 3                              |
| Mar   | 58          | 42          | 72                             | 208         | 46          | 22                             |
| Apr   | 37          | 102         | 276                            | 245         | 148         | 60                             |
| May   | 72          | 31          | 43                             | 317         | 179         | 56                             |
| Jun   | 98          | 69          | 70                             | 415         | 248         | 60                             |
| Jul   | 62          |             |                                | 477         |             |                                |
| Aug   | 68          |             |                                | 545         |             |                                |
| Sep   | 255         |             |                                | 800         |             |                                |
| Oct   | 28          |             |                                | 828         |             |                                |
| Nov   | 27          |             |                                | 855         |             |                                |
| Dec   | 9           |             |                                | 864         |             |                                |

## Reliability of Catfish Feed Deliveries Estimates

**Survey Procedures:** All participating catfish feed mills are feed mills that produce and deliver catfish feed to bonafide catfish producers. Survey data for catfish feed are collected from feed mills by the USDA-NASS Mississippi Field Office, which is responsible for ensuring survey coverage is as complete as possible. Mills are contacted by mail, telephone, fax, or internet. Diligent effort is made to ensure that all operations are accounted for in the estimate.

**Estimation Procedures:** The "Catfish Feed Deliveries" report refers strictly to catfish feed *delivered* to bonafide catfish producers and excludes catfish feed delivered to producers of other species. The totals include both bagged and bulk feed. Prior to summarization, questionnaires are compared to previous reports for comparability. Estimates are made for feed mills whose reports are not available in time to be included in the release. Those mills are identified by an asterisk on page 11 of this release. Estimates are based on the mill's previous reports and current conditions. Published totals are a straight summation of the individual reports and estimated data.

If a mill uses a fiscal accounting system, proration is used to convert reported data to a calendar month basis.

Two unusual features of this report are worthy of note: (1) cooperating feed mills are listed by name, and (2) it is impossible for the public to infer the amount of catfish feed *produced* in each State. Since many mills *deliver* feed to more than one State and to growers of other species, any inferences about overall production per State or per mill are not valid.

**Revision Policy:** Revisions may be necessary in the following month's publication pending a review of late reports received from mills. Revisions to previous estimates are made to improve month-to-month relationships. Estimates for the previous month are subject to revision in all States and regions monthly totals. In February, all monthly estimates for the previous year are reviewed and subject to revisions. The review is primarily based on data that may have been received after the original estimates were published.

**Reliability:** Estimates are based on data from cooperating catfish feed mills, and therefore have no sampling variability. However, estimates may be subject to errors such as omissions, duplication, mistakes in reporting, recording, and processing of data. These errors are minimized through strict quality controls in the edit and summarization process and a careful review of all reported data for consistency and reasonableness.

## Terms and Definitions Used for Catfish Feed Deliveries Estimates

**Broodfish** - Fish kept for egg production, including males. Broodfish produce the fertilized eggs that go to hatcheries. The most desirable size is 3 to 10 pounds or 4 to 6 years of age.

**Catfish Feed** - For the purposes of this report catfish feed is defined as feed *delivered* to bonafide catfish producers. Thus, it is not the absolute total amount of feed produced or even sold by a mill. (Some catfish feed is sold to producers of other species of fish.) The definition includes medicated feed. Catfish feed is designed to float on the surface of the water. Catfish are fed this way from the moment they hatch. Therefore, they learn to go to the surface for feed. The result is a clean nutritious diet for American farm raised catfish.

**Catfish Feed for Foodsize Fish** - Feed containing pellets larger than 1/8 of an inch.

**Catfish Feed for Fingerlings/Broodfish** - Feed containing pellets 1/8 of an inch or smaller.

**Fingerlings** – Fish weighing 2 to 60 pounds per 1,000 fish or 2 to 6 inches in length.

**Foodsize Fish** - Fish being grown commercially for human consumption. Optimum sizes at harvest depend on the market but are generally no lower than 3/4 pound but near one pound.

### Data were compiled in cooperation with the following feed mills:

|                          |                      |
|--------------------------|----------------------|
| Alabama Feed Mill LLC    | Land O Lakes         |
| Arkat Feeds              | Melick Aqua Feed LLC |
| Cargill Animal Nutrition | Rangen Inc.          |
| Carolina Fish Feeds      | Silver Cup           |
| Delta Western            | Southfresh Feeds     |
| Fishbelt Feeds Inc.      | Star Milling Co.     |
| Flint River Mills Inc.   | Topwater Feed Mill   |

### Information Contacts

Listed below are the commodity specialists in the Livestock Branch of the National Agricultural Statistics Service to contact for additional information.

|   |                |
|---|----------------|
| Dan Kerestes, Chief, Livestock Branch .....   | (202) 720-3570 |
| Bruce Boess, Head, Poultry and Specialty Commodities Section .....  | (202) 720-4447 |
| Doug Bounds - Poultry Slaughter, Turkey Hatchery, Turkeys Raised .....  | (202) 690-3237 |
| Charles Butler - Catfish Feed Deliveries .....  | (601) 965-4575 |
| David Colwell - Cold Storage .....  | (202) 720-8784 |
| Chris Hawthorn - Catfish Processing, Catfish Production, Trout Production,<br>Census of Aquaculture, Egg Products, Mink ..... | (202) 720-0585 |
| Kim Linonis - Layers, Eggs .....  | (202) 690-8632 |
| Troy Marshall - Broiler Hatchery, Chicken Hatchery, Honey.....  | (202) 720-3244 |

## ACCESS TO REPORTS!!

---

For your convenience, there are several ways to obtain NASS reports, data products, and services:

### INTERNET ACCESS

All NASS reports are available free of charge on the worldwide Internet. For access, connect to the Internet and go to the NASS Home Page at: [www.nass.usda.gov](http://www.nass.usda.gov).

### E-MAIL SUBSCRIPTION

All NASS reports are available by subscription free of charge direct to your e-mail address. Starting with the NASS Home Page at [www.nass.usda.gov](http://www.nass.usda.gov), under the right navigation, *Receive reports by Email*, click on **National** or **State**. Follow the instructions on the screen.

-----

### PRINTED REPORTS OR DATA PRODUCTS

**CALL OUR TOLL-FREE ORDER DESK: 800-999-6779 (U.S. and Canada)**  
**Other areas, please call 703-605-6220      FAX: 703-605-6900**  
**(Visa, MasterCard, check, or money order acceptable for payment.)**

-----

### ASSISTANCE

For **assistance** with general agricultural statistics or further information about NASS or its products or services, contact the **Agricultural Statistics Hotline** at **800-727-9540**, 7:30 a.m. to 4:00 p.m. ET, or e-mail: [nass@nass.usda.gov](mailto:nass@nass.usda.gov).

The U.S. Department of Agriculture (USDA) prohibits discrimination in all its programs and activities on the basis of race, color, national origin, age, disability, and where applicable, sex, marital status, familial status, parental status, religion, sexual orientation, genetic information, political beliefs, reprisal, or because all or part of an individual's income is derived from any public assistance program. (Not all prohibited bases apply to all programs.) Persons with disabilities who require alternative means for communication of program information (Braille, large print, audiotape, etc.) should contact USDA's TARGET Center at (202) 720-2600 (voice and TDD).

To file a complaint of discrimination, write to USDA, Director, Office of Civil Rights, 1400 Independence Avenue, S.W., Washington, D.C. 20250-9410, or call (800) 795-3272 (voice) or (202) 720-6382 (TDD). USDA is an equal opportunity provider and employer.