

# Overview of the U. S. Trout Industry

Released September 29, 2009, by the National Agricultural Statistics Service (NASS), Agricultural Statistics Board, U.S. Department of Agriculture. For information on *Overview of the U. S. Trout Industry* call Chris Hawthorn at 202-720-0585, office hours 7:30 a.m. to 4:00 p.m. ET.

## History and Background of Trout Production in the U.S.

The trout industry in the United States traces its roots back to the mid 1800's. America's westward expansion created more demand on local fish populations. The development of an artificial spawning system for rearing of eggs into fry was a major achievement for the industry. This revolutionized the trout industry in the U.S. by allowing hatcheries to raise far higher numbers of young fish, which would be stocked into rivers, lakes and ponds.

Several species of trout are raised in U.S. farms, but the majority of trout grown in U.S. farms are rainbow trout. Brown trout, lake trout, and steelhead, which is the ocean-going variety of the rainbow trout, are also found in the U.S. Many people across the country enjoy both the food and recreational opportunities that U.S. trout farmers provide.

No two trout farms are exactly alike. Each one is specialized to meet a different public need. Fee-fishing operations are set up to provide the public with the opportunity to harvest their own fish. State, Federal and Tribal hatcheries raise trout to be released back into streams and lakes. Commercial trout farms raise the fish that ultimately make it into restaurants across the country. Trout can be raised in open ponds, circular tanks, and straight raceways or in floating fish cages.

Intensive trout production begins with quality brood stock. Eggs from carefully selected adult females are harvested and fertilized by male fish shortly after. Eggs are transferred into special troughs designed to accommodate their incubation and hatching. Once hatched, trout fry still depend on their yolk sack for nourishment. After the yolk sac has been absorbed the young fish will begin to look for its own food. This is usually the stage where they will be transferred to another tank designed for raising these small fry. Fry are grown into fingerling fish and then ultimately food size with each new life cycle requiring different space and feeding needs. Trout farmers take the utmost care in making sure that the needs of their fish are being met. Chemicals, oxygenation, water temperature, susceptibility to predators and protection from disease are all carefully monitored to ensure the health of the fish.

## Brief Overview of the Report

Looking at the change in trout operations (Graph 1) from 2003 to 2007, all trout producing states increased the number of operations with the exception of Idaho and West Virginia. During that same time period the total value of fish sold and the fish distributed increased (Graph 2). Beginning in 2005 the value of trout distributed for restoration, conservation, and recreational purposes, primarily by State and Federal hatcheries became larger than the total value of fish sales received by the trout growers in the U.S. Trout sales for the size category twelve inches and longer made up the majority of trout dollars (Graph 3) from 2003 to 2007. Comparing 2003 to 2007, trout sales including eggs increased by 49.1 percent. A comparison of the number of U.S. trout lost versus the pounds lost can be found in Graph 4. A break out of the percent of trout sold by point of first sale for 2007 can be found on graphs 5 and 6. Graph 5 shows the percentage for 6 inch to 12 inch trout. Fee fishing makes up the largest percentage for this size category, fish sold to other producers followed by fish sold to the government were the next two largest categories. Graph 6 shows the percentage for 12 inch or longer trout. Processing makes up the largest percentage of this size category followed by fee fishing establishments.

## **Brief Comment about 2003-2007 Final Estimates**

This report is a comprehensive collection of statistics on the U.S. Trout industry from 2003-2007. Revisions to the data were made after a thorough review of survey and administrative data and information from the 2005 Census of Aquaculture and the 2007 Census of Agriculture. The 2003-2007 estimates shown herein are considered final and will not be revised again.

As you can see on the following pages, sales of trout in the U.S. have been on a steady increase since 2003. The major sales outlet for 6 inch to 12 inch trout were to fee and recreational fishing establishments followed by federal and state government. The majority of fish larger than 12” were sold to processors.

## **Survey Procedures and Methodology**

Trout data are collected through three different surveys. A description of each survey follows.

### Annual Trout Survey

The annual Trout Survey is conducted each January. Every known operator who produces trout or trout eggs either for distribution or sale is contacted either by mail, phone or in-person. Data are carefully analyzed for consistency and reasonableness. Results are published in the Trout Production report near the end of February each year. Questions such as the number of trout raised, total pounds produced and total value of production are asked. Also, breakouts of losses and point of first sale information is collected.

### Census of Agriculture

The Census of Agriculture is conducted every five years and is mandatory for all types of farming operations with at least \$1,000 in sales or potential sales of agricultural products. The Census of Agriculture encompasses all livestock, crop and aquaculture commodities. Data collected during this survey are tabulated at the County, State, and U.S. levels. Aquaculture data are asked in the other livestock section where respondents have the opportunity to list the type of aquaculture that they raise as well as production numbers during the reference year.

### Census of Aquaculture

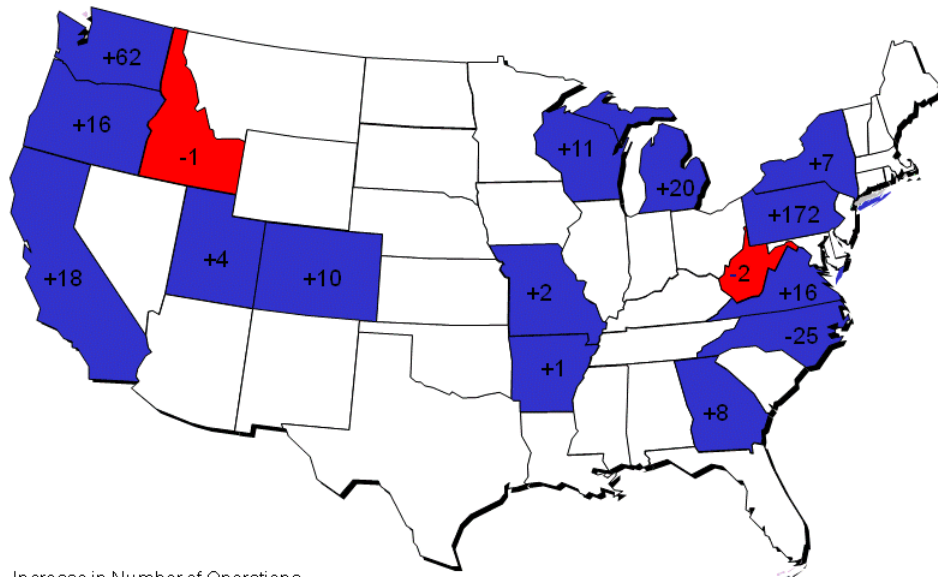
The Census of Aquaculture expands on the aquaculture data collected from the Census of Agriculture and provides a current and comprehensive picture of the aquaculture sector at the State and National level. The first aquaculture census was conducted in 1998 in response to the need for an accurate measure of the aquaculture sector. The second aquaculture census was conducted in 2005. The target population for the 2005 Census of Aquaculture was all commercial or non-commercial places from which \$1,000 or more of aquaculture products were produced and either sold or distributed during the census year. Commercial operations qualified with sales greater than or equal to \$1,000. Non-commercial operations included operations that produced an estimated value of \$1,000 or more of aquaculture products, but released or distributed their production for purposes of restoration, conservation, or recreation. Examples of non-commercial operations include Federal and State hatcheries. The Census of Aquaculture collects data concerning methods of production, sources of water used, farm employment and sales outlets.

## Contents

	<b>Page</b>
Graphics .....	1
Number of Trout Operations .....	4
Value of Trout Sold and Distributed .....	5
Trout Sales .....	7
Trout Point of First Sale .....	13
Trout Lost.....	14
Distributed Trout.....	16
Reliability of Trout Production Estimates .....	22
Terms and Definitions .....	22
Information Contacts.....	23

Graph 1

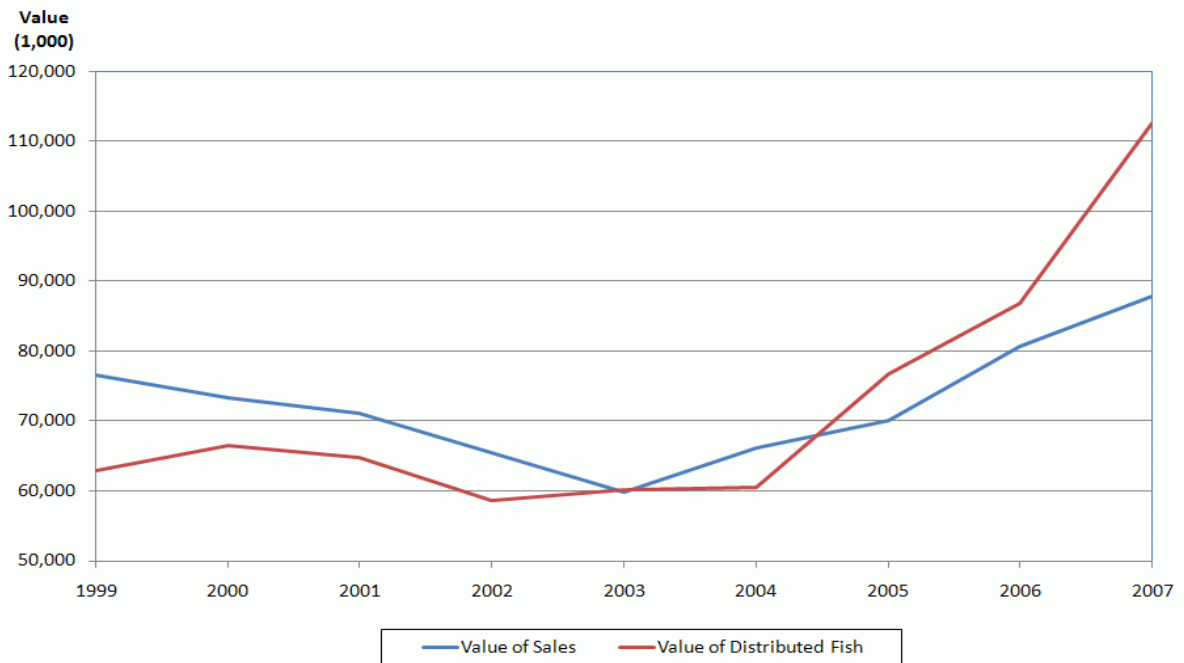
### Change in Number of Trout Operations From 2003 to 2007



Blue – Increase in Number of Operations  
Red – Decrease in Number of Operations

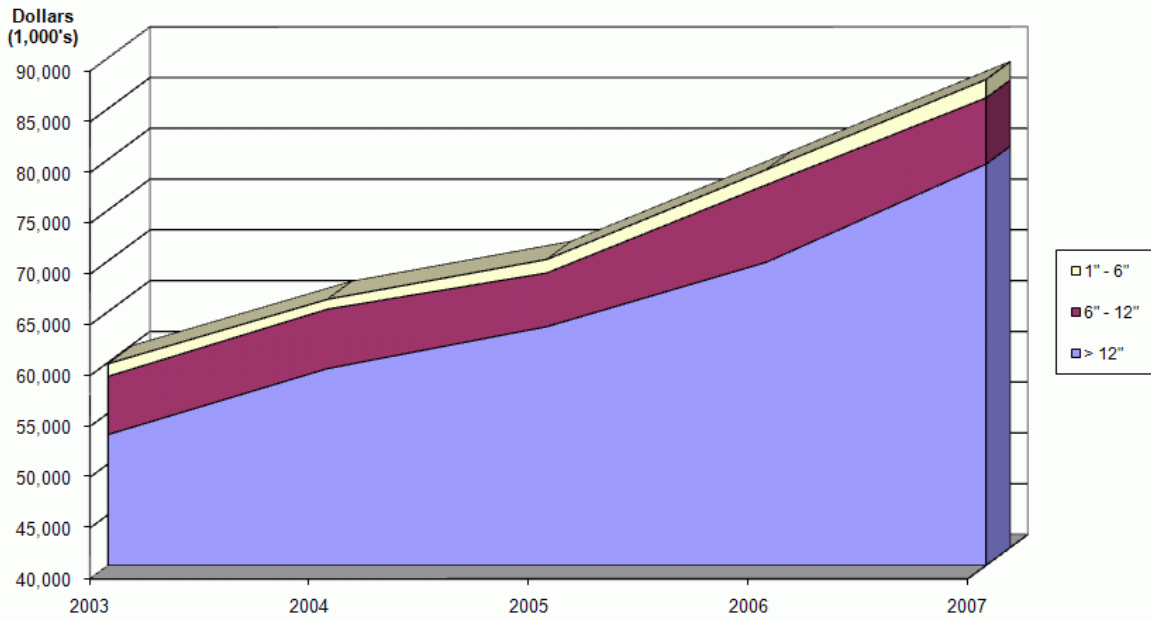
Graph 2

### Total Value of Fish Sold vs Value of Fish Distributed



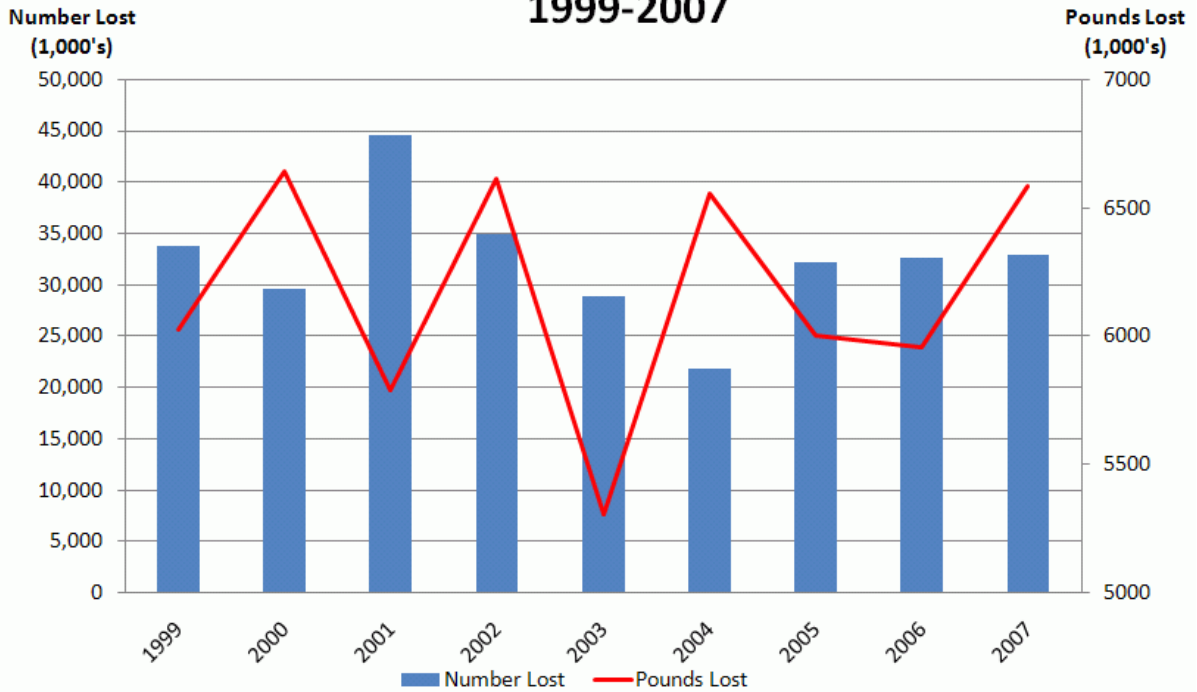
Graph 3

### US Trout Sales by Size Category



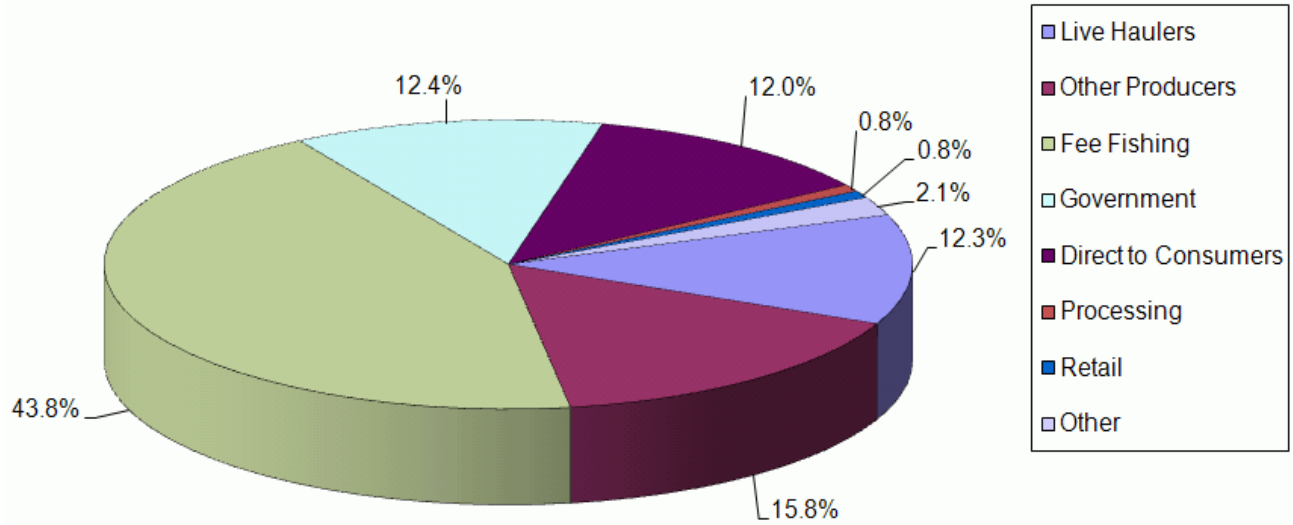
Graph 4

### U.S. Trout Lost, Intended for Sale 1999-2007



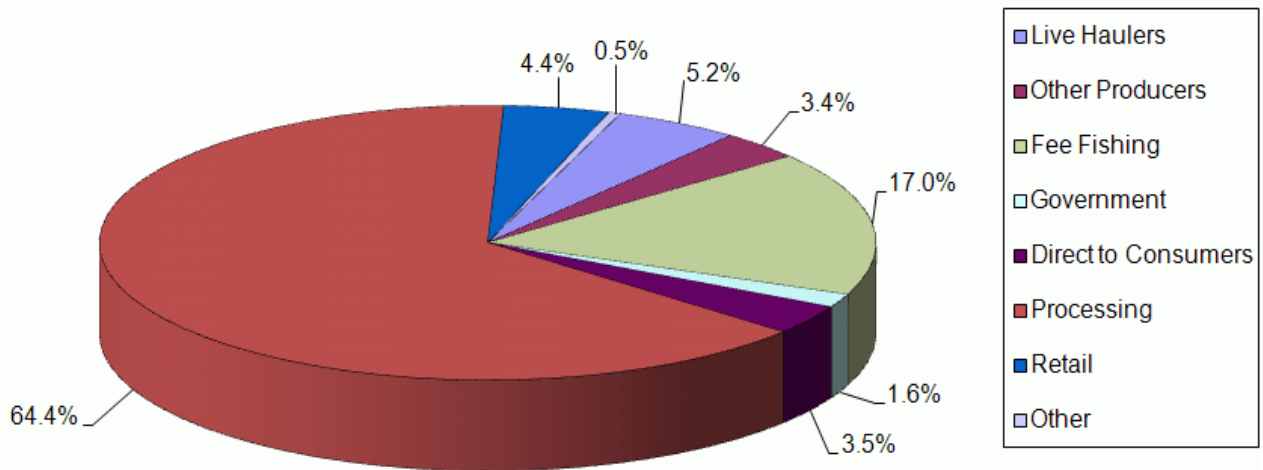
Graph 5

### U.S. Percent Sold by Point of First Sale 2007 Production Year 6" to 12"



Graph 6

### U.S. Percent Sold by Point of First Sale 2007 Production Year 12" or larger



**Trout: Number of Operations Selling and/or Distributing Fish and/or Eggs,  
by State and United States, 2003-2004**

State	Total		Selling Trout		Distributing Trout <sup>1</sup>	
	2003	2004	2003	2004	2003	2004
	<i>Number</i>	<i>Number</i>	<i>Number</i>	<i>Number</i>	<i>Number</i>	<i>Number</i>
AR	4	5			4	5
CA	25	26	13	14	16	16
CO	26	30	9	9	17	21
CT	6	6	3	3	3	3
GA	7	9	5	6	2	3
ID	53	46	26	29	27	17
ME	14	15	6	7	8	8
MA	11	13	7	9	5	5
MI	18	28	17	26	3	7
MO	10	11	6	8	5	3
NY	40	37	31	28	13	14
NC	46	51	43	48	5	3
OR	41	49	17	18	24	32
PA	57	58	46	44	16	19
TN	15	14	7	7	8	8
UT	21	27	11	16	10	12
VA	19	16	15	11	4	6
WA	51	59	15	16	37	44
WV	25	31	15	21	14	16
WI	56	61	39	45	21	20
US <sup>2</sup>	545	592	331	365	242	262

<sup>1</sup> Trout distributed for restoration, conservation, or recreational purposes.

<sup>2</sup> 20 State total.

**Trout: Number of Operations Selling and/or Distributing Fish and/or Eggs,  
by State and United States, 2005-2006**

State	Total		Selling Trout		Distributing Trout <sup>1</sup>	
	2005	2006	2005	2006	2005	2006
	<i>Number</i>	<i>Number</i>	<i>Number</i>	<i>Number</i>	<i>Number</i>	<i>Number</i>
AR	4	5			4	5
CA	33	34	15	14	21	24
CO	27	34	8	13	19	23
CT <sup>2</sup>	6		3		3	
GA	14	15	10	10	4	5
ID	42	43	26	26	17	21
ME <sup>2</sup>	16		9		8	
MA <sup>2</sup>	15		9		7	
MI	20	23	17	21	5	3
MO	15	14	8	8	7	6
NY	36	34	22	22	14	16
NC	49	47	43	44	6	8
OR	48	42	18	13	31	31
PA	57	51	42	38	19	18
TN <sup>2</sup>	14		7		7	
UT	21	26	9	12	13	15
VA	20	24	15	15	5	9
WA	69	96	17	12	54	84
WV	26	28	17	18	14	13
WI	70	66	51	48	23	20
Oth Sts <sup>3</sup>		183		98		134
US <sup>4</sup>	602	765	346	412	281	435

<sup>1</sup> Trout distributed for restoration, conservation, or recreational purposes.

<sup>2</sup> Estimates discontinued in 2006.

<sup>3</sup> Other States include State estimates not shown and States suppressed due to disclosure.

<sup>4</sup> 20 State total for 2005. All States included in 2006.

**Trout: Number of Operations Selling and/or Distributing Fish and/or Eggs,  
by State and United States, 2007**

State	Total	Selling Trout	Distributing Trout <sup>1</sup>
	2007	2007	2007
	<i>Number</i>	<i>Number</i>	<i>Number</i>
AR	5		5
CA	43	19	32
CO	36	14	24
GA	15	11	6
ID	52	29	24
MI	38	31	7
MO	12	6	6
NY	47	32	24
NC	71	59	12
OR	57	20	38
PA	229	59	173
UT	25	13	13
VA	35	22	13
WA	113	14	99
WV	23	15	10
WI	67	45	26
Oth Sts <sup>2</sup>	256	136	126
US	1,124	525	638

<sup>1</sup> Trout distributed for restoration, conservation, or recreational purposes.

<sup>2</sup> Other States include State estimates not listed and States suppressed due to disclosure.

**Trout: Value of Fish Sold and Distributed, by State (excluding eggs),  
and United States (excluding and including eggs), 2003-2004**

State	Total Value of Fish Sold		Total Value of Distributed Fish	
	2003 <sup>1</sup>	2004	2003	2004
	<i>1,000 Dollars</i>	<i>1,000 Dollars</i>	<i>1,000 Dollars</i>	<i>1,000 Dollars</i>
AR			*	*
CA	5,185	5,130	10,624	8,585
CO	2,125	991	5,794	5,393
CT	337	360	*	*
GA	581	935	*	*
ID	26,985	34,564	3,234	2,579
ME	220	212	*	*
MA	389	363	*	*
MI	691	790	*	*
MO	1,990	2,637	1,665	1,044
NY	797	478	*	*
NC	5,670	5,909	926	614
OR	506	807	2,332	3,529
PA	4,678	4,223	6,896	9,128
TN	199	181	*	*
UT	1,033	760	*	*
VA	1,448	924	1,593	818
WA	5,191	4,792	4,264	4,989
WV	477	694	1,738	2,155
WI	1,369	1,465	2,074	1,774
Oth Sts <sup>2</sup>			18,951	19,964
US <sup>3</sup>	59,871	66,215	60,091	60,572
US <sup>4</sup>	64,047	71,045	61,304	62,516

\* Not published to avoid disclosure of individual operations.

<sup>1</sup> Revised.

<sup>2</sup> Other States include States suppressed due to disclosure.

<sup>3</sup> 20 State total. Due to disclosure, the sum of individual States may not equal the total. Excludes value of eggs.

<sup>4</sup> 20 State total. Due to disclosure, the sum of individual States may not equal the total. Includes value of eggs.



**Trout: Value of Fish Sold and Distributed, by State (excluding eggs),  
and United States (excluding and including eggs), 2005-2006 <sup>1</sup>**

State	Total Value of Fish Sold		Total Value of Distributed Fish	
	2005	2006	2005	2006
	<i>1,000 Dollars</i>	<i>1,000 Dollars</i>	<i>1,000 Dollars</i>	<i>1,000 Dollars</i>
AR			*	*
CA	6,880	5,655	8,989	11,912
CO	1,474	2,453	4,583	5,164
CT <sup>2</sup>	373		*	
GA	853	630	*	*
ID	35,389	41,434	3,639	3,574
ME <sup>2</sup>	284		*	
MA <sup>2</sup>	399		*	
MI	1,010	902	*	*
MO	2,466	2,332	3,315	2,742
NY	627	578	*	*
NC	6,611	7,232	721	1,458
OR	807	331	6,786	7,393
PA	4,822	4,790	10,745	13,015
TN <sup>2</sup>	300		*	
UT	537	318	*	*
VA	1,260	1,475	2,390	2,103
WA	4,133	4,007	5,663	7,815
WV	345	235	1,818	2,036
WI	1,575	1,573	2,120	2,933
Oth Sts <sup>3</sup>		5,041	25,990	45,364
US <sup>4 6</sup>	70,145	78,986	76,759	105,509
US <sup>5 6</sup>	75,311	*	79,385	107,748

\* Not published to avoid disclosure of individual operations.

<sup>1</sup> Revised. <sup>2</sup> Estimates discontinued in 2006.

<sup>3</sup> Other States include State estimates not listed and States suppressed due to disclosure.

<sup>4</sup> Excludes value of eggs. <sup>5</sup> Includes value of eggs.

<sup>6</sup> 20 State for 2005, US total for 2006.

**Trout: Value of Fish Sold and Distributed, by State (excluding eggs),  
and United States (excluding and including eggs), 2007**

State	Total Value of Fish Sold		Total Value of Distributed Fish	
	2007		2007	
	<i>1,000 Dollars</i>		<i>1,000 Dollars</i>	
AR				*
CA		5,985		11,711
CO		2,557		4,684
GA		378		*
ID		46,631		6,939
MI		848		1,220
MO		2,131		1,761
NY		430		*
NC		6,632		1,071
OR		1,114		4,664
PA		5,212		23,237
UT		436		*
VA		1,411		1,910
WA		5,329		9,064
WV		359		*
WI		1,590		2,895
Oth Sts <sup>1</sup>		6,813		43,411
US <sup>2</sup>		87,856		112,567
US <sup>3</sup>		95,476		115,180

\* Not published to avoid disclosure of individual operations.

<sup>1</sup> Other States include State estimates not listed and States suppressed due to disclosure.

<sup>2</sup> Excludes value of eggs. <sup>3</sup> Includes value of eggs.

**Trout Sales by Size Category, by State  
and United States, 2003-2004**

Size Category and State	Number of Fish		Live Weight				Sales			
			Total		Average per Fish		Total		Average Price per Pound	
	2003	2004	2003	2004	2003	2004	2003 <sup>1</sup>	2004	2003	2004
	<i>1,000</i>	<i>1,000</i>	<i>1,000 Pounds</i>	<i>1,000 Pounds</i>	<i>Pounds</i>	<i>Pounds</i>	<i>1,000 Dollars</i>	<i>1,000 Dollars</i>	<i>Dollars</i>	<i>Dollars</i>
Fish 12" or Longer										
AR										
CA	1,720	1,840	2,400	2,200	1.4	1.2	4,560	4,312	1.90	1.96
CO	520	275	470	235	0.9	0.9	1,410	576	3.00	2.45
CT	*	*	*	*	*	*	*	*	*	*
GA	105	300	125	420	1.2	1.4	363	827	2.90	1.97
ID	34,000	39,000	34,600	42,900	1.0	1.1	26,642	34,320	0.77	0.80
ME	*	*	*	*	*	*	*	*	*	*
MA	35	37	31	33	0.9	0.9	153	158	4.95	4.80
MI	250	285	275	305	1.1	1.1	564	601	2.05	1.97
MO	*	*	*	*	*	*	*	*	*	*
NY	160	90	169	87	1.1	1.0	487	262	2.88	3.01
NC	4,410	3,510	4,110	3,940	0.9	1.1	5,014	5,437	1.22	1.38
OR	130	220	210	200	1.6	0.9	418	486	1.99	2.43
PA	1,380	1,160	1,460	1,150	1.1	1.0	3,796	3,335	2.60	2.90
TN	50	46	55	54	1.1	1.2	139	134	2.52	2.48
UT	175	180	190	165	1.1	0.9	469	421	2.47	2.55
VA	600	400	560	400	0.9	1.0	1,310	808	2.34	2.02
WA	870	740	4,700	4,050	5.4	5.5	4,418	3,969	0.94	0.98
WV	320	363	333	378	1.0	1.0	450	658	1.35	1.74
WI	490	400	441	387	0.9	1.0	1,147	1,072	2.60	2.77
Oth Sts <sup>2</sup>	841	745	717	732	0.9	1.0	1,558	2,021	2.17	2.76
US <sup>3</sup>	46,056	49,591	50,846	57,636	1.1	1.2	52,898	59,397	1.04	1.03
Fish 6" - 12"										
AR										
CA	540	550	230	250	0.4	0.5	577	680	2.51	2.72
CO	*	*	*	*	*	*	*	*	*	*
CT	*	*	*	*	*	*	*	*	*	*
GA	*	*	*	*	*	*	*	*	*	*
ID	*	*	*	*	*	*	*	*	*	*
ME	*	*	*	*	*	*	*	*	*	*
MA	*	*	*	*	*	*	*	*	*	*
MI	*	165	*	65	*	0.4	*	167	*	2.57
MO	*	*	*	*	*	*	*	*	*	*
NY	145	105	53	38	0.4	0.4	289	179	5.45	4.70
NC	730	300	225	140	0.3	0.5	351	217	1.56	1.55
OR	130	310	30	110	0.2	0.4	74	310	2.47	2.82
PA	500	450	211	216	0.4	0.5	802	821	3.80	3.80
TN	*	*	*	*	*	*	*	*	*	*
UT	*	*	*	*	*	*	*	*	*	*
VA	75	*	40	*	0.5	*	108	*	2.69	*
WA	550	880	170	277	0.3	0.3	386	693	2.27	2.50
WV	*	*	*	*	*	*	*	*	*	*
WI	300	400	71	123	0.2	0.3	191	332	2.69	2.70
Oth Sts <sup>2</sup>	3,443	2,358	1,265	960	0.4	0.4	2,955	2,453	2.34	2.56
US <sup>3</sup>	6,413	5,518	2,295	2,179	0.4	0.4	5,733	5,852	2.50	2.69

See footnote(s) at end of table.

--continued

**Trout Sales by Size Category, by State  
and United States, 2003-2004 (continued)**

Size Category and State	Number of Fish		Live Weight				Sales			
			Total		Average per 1,000 Fish		Total		Average Price per 1,000 Fish	
	2003	2004	2003	2004	2003	2004	2003 <sup>1</sup>	2004	2003	2004
	<i>1,000</i>	<i>1,000</i>	<i>1,000 Pounds</i>	<i>1,000 Pounds</i>	<i>Pounds</i>	<i>Pounds</i>	<i>1,000 Dollars</i>	<i>1,000 Dollars</i>	<i>Dollars</i>	<i>Dollars</i>
Fish 1" - 6"										
AR										
CA	210	330	3	5	14.3	15.2	48	138	227.00	418.00
CO	*	*	*	*	*	*	*	*	*	*
CT	*	*	*	*	*	*	*	*	*	*
GA	*	*	*	*	*	*	*	*	*	*
ID	*	*	*	*	*	*	*	*	*	*
ME	*	*	*	*	*	*	*	*	*	*
MA	*	*	*	*	*	*	*	*	*	*
MI	*	55	*	3	*	54.5	*	22	*	408.00
MO	*	*	*	*	*	*	*	*	*	*
NY	70	110	2	3	28.6	27.3	21	37	300.00	332.00
NC	3,390	2,830	65	45	19.2	15.9	305	255	90.00	90.00
OR	50	40	1	1	20.0	25.0	14	11	285.00	265.00
PA	270	190	8	5	29.6	26.3	80	67	295.00	355.00
TN	*	*	*	*	*	*	*	*	*	*
UT	*	*	*	*	*	*	*	*	*	*
VA	190	*	3	*	15.8	*	30	*	157.00	*
WA	1,300	410	45	13	34.6	31.7	387	130	298.00	317.00
WV	*	*	*	*	*	*	*	*	*	*
WI	165	290	2	4	12.1	13.8	31	61	185.00	209.00
Oth Sts <sup>2</sup>	1,712	1,295	54	34	31.5	26.3	324	245	189.00	189.00
US <sup>3</sup>	7,357	5,550	183	113	24.9	20.4	1,240	966	169.00	174.00

\* Not published to avoid disclosure of individual operations.

<sup>1</sup> Revised.

<sup>2</sup> Other States include States suppressed due to disclosure.

<sup>3</sup> 20 State total. Due to disclosure, the sum of the 20 individual States may not equal total.

**Trout Eggs Sales by State, Region, and United States, 2003-2004 <sup>1</sup>**

Region <sup>2</sup>	Number of Eggs		Average Price per 1,000 Eggs		Total Sales	
	2003	2004	2003	2004	2003	2004
	<i>1,000</i>	<i>1,000</i>	<i>Dollars</i>	<i>Dollars</i>	<i>1,000 Dollars</i>	<i>1,000 Dollars</i>
Northeast	605	940	16.50	27.70	10	26
South and Central	620	1,080	21.00	22.20	13	24
West	262,320	287,600	15.80	16.60	4,153	4,780
WA	253,000	277,000	16.00	16.50	4,048	4,571
US <sup>3</sup>	263,545	289,620	15.80	16.70	4,176	4,830

<sup>1</sup> Revised.

<sup>2</sup> Data published at the regional level to avoid disclosure of individual operations. Regions are defined as follows - Northeast: CT, MA, ME, NY, and PA; South: AR, GA, NC, TN, VA, and WV; Central: MI, MO, and WI; West: CA, CO, ID, OR, UT, and WA.

<sup>3</sup> 20 State total.

**Trout Sales by Size Category, by State  
and United States, 2005-2006<sup>1</sup>**

Size Category and State	Number of Fish		Live Weight				Sales			
			Total		Average per Fish		Total		Average Price per Pound	
	2005	2006	2005	2006	2005	2006	2005	2006	2005	2006
	<i>1,000</i>	<i>1,000</i>	<i>1,000 Pounds</i>	<i>1,000 Pounds</i>	<i>Pounds</i>	<i>Pounds</i>	<i>1,000 Dollars</i>	<i>1,000 Dollars</i>	<i>Dollars</i>	<i>Dollars</i>
Fish 12" or Longer										
AR										
CA	2,050	1,630	2,550	2,000	1.2	1.2	6,018	5,000	2.36	2.50
CO	410	520	346	495	0.8	1.0	945	1,549	2.73	3.13
CT <sup>2</sup>	*		*		*		*		*	
GA	450	240	430	250	1.0	1.0	839	580	1.95	2.32
ID	44,000	38,000	43,600	46,500	1.0	1.2	35,316	40,920	0.81	0.88
ME <sup>2</sup>	*		*		*		*		*	
MA <sup>2</sup>	33		28		0.8		154		5.50	
MI	300	370	356	352	1.2	1.0	819	718	2.30	2.04
MO	*	*	*	*	*	*	*	*	*	*
NY	100	80	114	82	1.1	1.0	332	311	2.91	3.79
NC	3,540	3,890	4,140	4,350	1.2	1.1	5,713	6,395	1.38	1.47
OR	109	100	143	108	1.3	1.1	399	226	2.79	2.09
PA	1,290	1,290	1,320	1,400	1.0	1.1	3,973	3,738	3.01	2.67
TN <sup>2</sup>	85		92		1.1		256		2.78	
UT	166	75	156	87	0.9	1.2	463	301	2.97	3.46
VA	690	640	673	641	1.0	1.0	1,010	1,288	1.50	2.01
WA	910	970	4,150	3,900	4.6	4.0	3,403	3,276	0.82	0.84
WV	161	99	171	100	1.1	1.0	328	209	1.92	2.09
WI	530	640	486	575	0.9	0.9	1,302	1,265	2.68	2.20
Oth Sts <sup>3</sup>	794	1,650	1,145	1,527	1.4	0.9	2,263	4,096	1.98	2.68
US <sup>4</sup>	55,618	50,194	59,900	62,367	1.1	1.2	63,533	69,872	1.06	1.12
Fish 6" - 12"										
AR										
CA	970	600	302	179	0.3	0.3	667	490	2.21	2.74
CO	*	*	*	*	*	*	*	*	*	*
CT <sup>2</sup>	*		*		*		*		*	
GA	15	*	8	*	0.5	*	14	*	1.80	*
ID	*	*	*	*	*	*	*	*	*	*
ME <sup>2</sup>	*		*		*		*		*	
MA <sup>2</sup>	*		*		*		*		*	
MI	*	*	*	*	*	*	*	*	*	*
MO	*	*	*	*	*	*	*	*	*	*
NY	177	120	58	50	0.3	0.4	244	199	4.20	3.98
NC	630	570	275	252	0.4	0.4	440	413	1.60	1.64
OR	*	115	*	41	*	0.4	*	101	*	2.46
PA	490	610	190	200	0.4	0.3	762	930	4.01	4.65
TN <sup>2</sup>	*		*		*		*		*	
UT	61	*	25	*	0.4	*	68	*	2.71	*
VA	162	*	76	*	0.5	*	233	*	3.07	*
WA	560	580	171	198	0.3	0.3	404	477	2.36	2.41
WV	*	*	*	*	*	*	*	*	*	*
WI	260	210	88	64	0.3	0.3	242	225	2.75	3.51
Oth Sts <sup>3</sup>	2,059	4,643	801	2,195	0.4	0.5	2,216	4,797	2.77	2.19
US <sup>4</sup>	5,384	7,448	1,994	3,179	0.4	0.4	5,290	7,632	2.65	2.40

See footnote(s) at end of table.

--continued

**Trout Sales by Size Category, by State  
and United States, 2005-2006<sup>1</sup> (continued)**

Size Category and State	Number of Fish		Live Weight				Sales			
			Total		Average per 1,000 Fish		Total		Average Price per 1,000 Fish	
	2005	2006	2005	2006	2005	2006	2005	2006	2005	2006
	<i>1,000</i>	<i>1,000</i>	<i>1,000 Pounds</i>	<i>1,000 Pounds</i>	<i>Pounds</i>	<i>Pounds</i>	<i>1,000 Dollars</i>	<i>1,000 Dollars</i>	<i>Dollars</i>	<i>Dollars</i>
Fish 1" - 6"										
AR										
CA	510	440	11	13	21.6	29.5	195	165	382.00	374.00
CO	*	*	*	*	*	*	*	*	*	*
CT <sup>2</sup>	*		*		*		*		*	
GA										
ID	*	*	*	*	*	*	*	*	*	*
ME <sup>2</sup>	*		*		*		*		*	
MA <sup>2</sup>	*		*		*		*		*	
MI	*	*	*	*	*	*	*	*	*	*
MO	*	*	*	*	*	*	*	*	*	*
NY	109	200	3	8	27.5	40.0	51	68	465.00	339.00
NC	3,440	3,590	57	58	16.6	16.2	458	424	133.00	118.00
OR	*	*	*	*	*	*	*	*	*	*
PA	290	390	5	10	17.2	25.6	87	122	299.00	313.00
TN <sup>2</sup>	*		*		*		*		*	
UT	22	*	2	*	90.9	*	6	*	259.00	*
VA	91	*	1	*	11.0	*	17	*	183.00	*
WA	1,330	1,300	40	33	30.1	25.4	326	254	245.00	195.00
WV	*	*	*	*	*	*	*	*	*	*
WI	198	330	4	10	20.2	30.3	31	83	159.00	251.00
Oth Sts <sup>3</sup>	995	1,766	40	70	40.2	39.6	151	366	152.00	207.00
US <sup>4</sup>	6,985	8,016	163	202	23.3	25.2	1,322	1,482	189.00	185.00

\* Not published to avoid disclosure of individual operations.

<sup>1</sup> Revised.

<sup>2</sup> Estimates discontinued in 2006.

<sup>3</sup> Other States include State estimates not shown and States suppressed due to disclosure.

<sup>4</sup> 20 State total for 2005, US total for 2006.

**Trout Eggs Sales by State, Region, and United States, 2005-2006<sup>1</sup>**

Region <sup>2</sup>	Number of Eggs		Average Price per 1,000 Eggs		Total Sales	
	2005 <sup>3</sup>	2006 <sup>4</sup>	2005 <sup>3</sup>	2006 <sup>4</sup>	2005 <sup>3</sup>	2006 <sup>4</sup>
	<i>1,000</i>	<i>1,000</i>	<i>Dollars</i>	<i>Dollars</i>	<i>1,000 Dollars</i>	<i>1,000 Dollars</i>
Northeast	642	471	20.20	21.20	13	10
South and Central	524	523	19.10	11.50	10	6
West	305,210	*	16.80	*	5,119	*
WA	295,000	*	17.00	*	5,015	*
US <sup>5</sup>	307,381	*	16.80	*	5,166	*

\* Not published to avoid disclosure of individual operations.

<sup>1</sup> Revised.

<sup>2</sup> Data published at the regional level to avoid disclosure of individual operations.

<sup>3</sup> Regions for 2005 are defined as follows - Northeast: CT, MA, ME, NY, and PA; South: AR, GA, NC, TN, VA, and WV; Central: MI, MO, and WI; West: CA, CO, ID, OR, UT, and WA.

<sup>4</sup> Regions for 2006 are the same as 2005 but excludes CT, MA, ME, and TN.

<sup>5</sup> 20 State total for 2005, 16 State total for 2006. Due to disclosure, the sum of individual regions may not equal the total.

**Trout Sales by Size Category, by State  
and United States, 2007**

Size Category and State	Number of Fish	Live Weight		Sales	
		Total	Average per Fish	Total	Average Price per Pound
	2007	2007	2007	2007	2007
	<i>1,000</i>	<i>1,000 Pounds</i>	<i>Pounds</i>	<i>1,000 Dollars</i>	<i>Dollars</i>
Fish 12" or Longer					
AR					
CA	1,810	2,150	1.2	5,504	2.56
CO	760	682	0.9	2,230	3.27
GA	*	*	*	*	*
ID	45,400	49,900	1.1	46,407	0.93
MI	240	236	1.0	675	2.86
MO	*	*	*	*	*
NY	45	36	0.8	179	4.97
NC	4,020	4,400	1.1	5,500	1.25
OR	*	*	*	*	*
PA	1,080	1,410	1.3	4,033	2.86
UT	101	111	1.1	350	3.15
VA	590	586	1.0	1,272	2.17
WA	1,210	3,900	3.2	4,212	1.08
WV	184	202	1.1	335	1.66
WI	480	432	0.9	1,464	3.39
Oth Sts <sup>1</sup>	2,754	2,865	1.0	7,362	2.57
US	58,674	66,910	1.1	79,523	1.19
Fish 6" - 12"					
AR					
CA	490	148	0.3	435	2.94
CO	*	*	*	*	*
GA	*	*	*	*	*
ID	*	*	*	*	*
MI	*	*	*	*	*
MO	*	*	*	*	*
NY	88	35	0.4	210	6.00
NC	790	395	0.5	679	1.72
OR	155	62	0.4	208	3.35
PA	410	204	0.5	1,040	5.10
UT	*	*	*	*	*
VA	*	*	*	*	*
WA	620	187	0.3	561	3.00
WV	*	*	*	*	*
WI	100	30	0.3	95	3.16
Oth Sts <sup>1</sup>	2,758	1,100	0.4	3,294	2.99
US	5,411	2,161	0.4	6,522	3.02

See footnote(s) at end of table.

--continued

**Trout: Sales by Size Category, by State  
and United States, 2007 (continued)**

Size Category and State	Number of Fish	Live Weight		Sales	
		Total	Average per 1,000 Fish	Total	Average Price per 1,000 Fish
	2007	2007	2007	2007	2007
	<i>1,000</i>	<i>1,000 Pounds</i>	<i>Pounds</i>	<i>1,000 Dollars</i>	<i>Dollars</i>
Fish 1" - 6"					
AR					
CA	330	11	33.3	46	140
CO	*	*	*	*	*
GA					
ID	*	*	*	*	*
MI	*	*	*	*	*
MO	*	*	*	*	*
NY	65	2	30.8	41	626
NC	3,510	114	32.5	453	129
OR	*	*	*	*	*
PA	400	21	52.5	139	348
UT	*	*	*	*	*
VA	*	*	*	*	*
WA	2,750	94	34.2	556	202
WV	*	*	*	*	*
WI	156	6	38.5	31	199
Oth Sts <sup>1</sup>	2,936	148	50.4	545	186
US	10,147	396	39.0	1,811	178

\* Not published to avoid disclosure of individual operations.

<sup>1</sup> Other States include State estimates not shown and States suppressed due to disclosure.

**Trout Eggs: Sales by State, Region, and United States, 2007**

Region <sup>1 2</sup>	Number of Eggs	Average Price per 1,000 Eggs	Total Sales
	2007	2007	2007
	<i>1,000</i>	<i>Dollars</i>	<i>1,000 Dollars</i>
Northeast	551	21.80	12
South and Central	806	19.90	16
West	398,057	19.10	7,592
WA	389,000	19.20	7,469
US <sup>3</sup>	399,414	19.10	7,620

<sup>1</sup> Data published at the regional level to avoid disclosure of individual operations.

<sup>2</sup> Regions for 2007 are defined as follows - Northeast: NY, and PA; South: AR, GA, NC, VA, and WV; Central: MI, MO, and WI; West: CA, CO, ID, OR, UT, and WA.

<sup>3</sup> 16 State total.

**Trout: 12" or Longer Percent Sold by Point of First Sale,  
United States, 2003-2007<sup>1 2 3</sup>**

Year	Live Haulers	Fee/Rec Fishing	Other Producers	Government
	<i>Percent</i>	<i>Percent</i>	<i>Percent</i>	<i>Percent</i>
2003	1.5	20.3	1.8	2.0
2004	2.3	17.4	1.8	1.5
2005	5.5	20.5	1.0	1.0
2006	4.9	16.5	1.3	0.6
2007	5.2	17.0	3.4	1.6
Year	Direct to Consumer	Processors	Restaurant & Retail	Other
	<i>Percent</i>	<i>Percent</i>	<i>Percent</i>	<i>Percent</i>
2003	3.4	68.3	1.6	1.1
2004	2.1	73.4	1.4	0.1
2005	3.1	65.5	2.4	1.0
2006	2.3	71.3	1.0	2.1
2007	3.5	64.4	4.4	0.5

<sup>1</sup> Revised.

<sup>2</sup> Excludes distributed fish.

<sup>3</sup> Percent of total sold.

**Trout: 6"-12" Percent Sold by Point of First Sale,  
United States, 2003-2007<sup>1 2 3</sup>**

Year	Live Haulers	Fee/Rec Fishing	Other Producers	Government
	<i>Percent</i>	<i>Percent</i>	<i>Percent</i>	<i>Percent</i>
2003	5.4	52.5	12.0	13.7
2004	6.7	49.9	11.5	15.7
2005	4.7	52.3	6.3	19.4
2006	5.8	48.0	15.9	7.9
2007	12.3	43.8	15.8	12.4
Year	Direct to Consumer	Processors	Restaurant & Retail	Other
	<i>Percent</i>	<i>Percent</i>	<i>Percent</i>	<i>Percent</i>
2003	6.8		6.0	3.6
2004	10.4	1.7	0.5	3.6
2005	8.0	2.1	1.7	5.5
2006	11.0	6.5	1.8	3.1
2007	12.0	0.8	0.8	2.1

<sup>1</sup> Revised.

<sup>2</sup> Excludes distributed fish.

<sup>3</sup> Percent of total sold.



**Trout Lost, Intended for Sale: Number and Pounds  
by State and United States, 2003-2007**

State	2003		2004		2005	
	Number Lost	Pounds Lost	Number Lost	Pounds Lost	Number Lost	Pounds Lost
	<i>1,000</i>	<i>1,000</i>	<i>1,000</i>	<i>1,000</i>	<i>1,000</i>	<i>1,000</i>
AR						
CA	223	70	89	58	878	265
CO	336	51	127	17	90	24
CT	7	5	6	4	4	5
GA	13	2	13	4	4	3
ID	25,080	4,040	15,690	3,733	27,100	3,645
ME	33	4	22	7	9	1
MA	11	6	17	10	10	7
MI	87	66	111	44	109	43
MO	285	63	270	54	574	151
NY	102	13	105	13	22	9
NC	1,210	206	3,657	1,523	1,054	1,077
OR	255	34	159	180	85	12
PA	313	167	637	329	443	215
TN	69	9	13	3	85	15
UT	142	15	174	25	103	54
VA	189	41	212	50	1,020	194
WA	163	425	128	379	191	180
WV	113	50	144	59	45	32
WI	213	37	318	66	298	72
US <sup>1</sup>	28,844	5,304	21,892	6,558	32,124	6,004
	2006 <sup>2</sup>		2007			
State	Number Lost	Pounds Lost	Number Lost	Pounds Lost	Number Lost	Pounds Lost
	<i>1,000</i>	<i>1,000</i>	<i>1,000</i>	<i>1,000</i>	<i>1,000</i>	<i>1,000</i>
AR						
CA	250	80		215		125
CO	145	49		296		28
GA	51	132		90		44
ID	26,140	3,531		27,744		4,038
MI	53	32		82		39
MO	303	43		336		43
NY	102	27		33		6
NC	1,830	962		1,659		1,266
OR	100	57		55		6
PA	714	276		553		300
UT	191	121		256		75
VA	301	74		803		246
WA	145	275		96		109
WV	150	54		59		26
WI	267	65		171		50
Oth Sts <sup>3</sup>	1,841	178		431		181
US	32,583	5,956		32,879		6,582

<sup>1</sup> 20 State total for 2003-2005. All States for 2006-2007.

<sup>2</sup> Revised.

<sup>3</sup> Other States include State estimates not shown.

**Trout Lost, Intended for Sale: Number and Pounds by Cause,  
United States, 2003-2007 <sup>1</sup>**

Year	Disease		Theft		Chemicals		Drought	
	Number Lost	Pounds Lost	Number Lost	Pounds Lost	Number Lost	Pounds Lost	Number Lost	Pounds Lost
	<i>1,000</i>	<i>1,000</i>	<i>1,000</i>	<i>1,000</i>	<i>1,000</i>	<i>1,000</i>	<i>1,000</i>	<i>1,000</i>
2003	23,713	3,900	316	169	4	2	578	163
2004	15,942	3,870	86	35	9	5	324	110
2005	16,359	2,619	25	22	4	*	6,188	1,097
2006 <sup>2</sup>	29,480	4,112	107	25	32	15	594	528
2007	28,108	4,469	30	25	24	13	1,425	776
Year	Flood		Predators		Other		Total	
	Number Lost	Pounds Lost	Number Lost	Pounds Lost	Number Lost	Pounds Lost	Number Lost	Pounds Lost
	<i>1,000</i>	<i>1,000</i>	<i>1,000</i>	<i>1,000</i>	<i>1,000</i>	<i>1,000</i>	<i>1,000</i>	<i>1,000</i>
2003	256	102	3,610	772	367	196	28,844	5,304
2004	2,646	1,502	2,167	825	718	211	21,892	6,558
2005	256	533	2,674	700	6,618	1,033	32,124	6,004
2006 <sup>2</sup>	272	154	1,406	494	692	628	32,583	5,956
2007	96	70	2,730	915	466	314	32,879	6,582

\* Not published to avoid disclosure of individual operations.

<sup>1</sup> 20 State total for 2003-2005, US total for 2006-2007.

<sup>2</sup> Revised.

**Distributed Trout by Size Category, by State  
and United States, 2003-2004**

Size Category and State	Number of Fish		Live Weight				Sales			
			Total		Average Pounds per Fish		Total		Average Value per Pound	
	2003	2004	2003	2004	2003	2004	2003	2004 <sup>1</sup>	2003	2004
	<i>1,000</i>	<i>1,000</i>	<i>1,000 Pounds</i>	<i>1,000 Pounds</i>	<i>Pounds</i>	<i>Pounds</i>	<i>1,000 Dollars</i>	<i>1,000 Dollars</i>	<i>Dollars</i>	<i>Dollars</i>
Fish 12" or Longer										
AR		*		*		*		*		*
CA	5,760	4,660	5,000	3,610	0.9	0.8	8,450	5,776	1.69	1.60
CO	80	92	75	80	0.9	0.9	206	192	2.75	2.40
CT	*	*	*	*	*	*	*	*	*	*
GA	*	*	*	*	*	*	*	*	*	*
ID	32	28	40	30	1.3	1.1	176	53	4.40	1.75
ME	60	90	64	86	1.1	1.0	*	*	*	*
MA	450	*	373	*	0.8	*	*	*	*	*
MI	*	3	*	3	*	1.0	*	5	*	1.69
MO	*	*	*	*	*	*	*	*	*	*
NY	*	*	*	*	*	*	*	*	*	*
NC	*	*	*	*	*	*	*	*	*	*
OR	5		10		2.0		29		2.88	
PA	*	*	*	*	*	*	*	*	*	*
TN	*	*	*	*	*	*	*	*	*	*
UT	*	16	*	23	*	1.4	*	*	*	*
VA	*	320	*	290	*	0.9	*	354	*	1.22
WA	91	71	123	109	1.4	1.5	431	382	3.50	3.50
WV	*	*	*	*	*	*	*	*	*	*
WI	13	14	38	30	2.9	2.1	112	78	2.95	2.60
Oth Sts <sup>2</sup>	4,901	2,390	3,858	2,028	0.7	0.8	9,764	6,614	2.53	3.26
US <sup>3</sup>	11,392	7,684	9,581	6,289	0.8	0.8	19,168	13,454	2.00	2.14
Fish 6" - 12"										
AR	*	*	*	*	*	*	*	*	*	*
CA	2,010	2,940	860	1,040	0.4	0.4	2,081	2,673	2.42	2.57
CO	2,960	3,020	1,150	1,200	0.4	0.4	4,370	3,780	3.80	3.15
CT	*	*	*	*	*	*	*	*	*	*
GA	*	*	*	*	*	*	*	*	*	*
ID	7,480	2,240	1,930	840	0.3	0.4	2,702	1,957	1.40	2.33
ME	710	750	195	205	0.3	0.3	*	*	*	*
MA	115	*	37	*	0.3	*	*	*	*	*
MI	*	2,748	*	245	*	0.1	*	1,201	*	4.90
MO	*	*	*	*	*	*	*	*	*	*
NY	*	*	*	*	*	*	*	*	*	*
NC	*	*	*	*	*	*	*	*	*	*
OR	2,620	3,200	940	1,140	0.4	0.4	2,162	3,374	2.30	2.96
PA	5,150	5,230	2,510	2,390	0.5	0.5	6,777	7,170	2.70	3.00
TN	*	*	*	*	*	*	*	*	*	*
UT	3,400	3,460	784	877	0.2	0.3	*	*	*	*
VA	900	*	450	*	0.5	*	1,395	*	3.10	*
WA	3,720	3,750	946	1,120	0.3	0.3	3,311	3,920	3.50	3.50
WV	*	*	*	*	*	*	*	*	*	*
WI	3,180	2,880	450	379	0.1	0.1	1,355	1,319	3.01	3.48
Oth Sts <sup>2</sup>	11,605	11,933	3,527	4,699	0.3	0.3	12,041	15,316	3.41	3.26
US <sup>3</sup>	43,850	42,151	13,779	14,135	0.3	0.3	36,194	40,710	2.63	2.88

See footnote(s) at end of table.

--continued

**Distributed Trout by Size Category, by State  
and United States, 2003-2004 (continued)**

Size Category and State	Number of Fish		Live Weight				Sales			
			Total		Average per 1,000 Fish		Total		Average Value per 1,000 Fish	
	2003	2004	2003	2004	2003	2004	2003	2004 <sup>1</sup>	2003	2004
	<i>1,000</i>	<i>1,000</i>	<i>1,000 Pounds</i>	<i>1,000 Pounds</i>	<i>Pounds</i>	<i>Pounds</i>	<i>1,000 Dollars</i>	<i>1,000 Dollars</i>	<i>Dollars</i>	<i>Dollars</i>
Fish 1" - 6"										
AR	*	*	*	*	*	*	*	*	*	*
CA	5,250	5,670	62	58	11.8	10.2	93	136	17.80	24.00
CO	6,410	8,880	130	200	20.3	22.5	1,218	1,421	190.00	160.00
CT	*	*	*	*	*	*	*	*	*	*
GA	*	*	*	*	*	*	*	*	*	*
ID	10,300	21,400	195	170	18.9	7.9	356	569	34.60	26.60
ME	520	230	8	3	15.4	13.0	*	*	*	*
MA	600	*	3	*	5.0	*	*	*	*	*
MI	*	*	*	*	*	*	*	*	*	*
MO	*	*	*	*	*	*	*	*	*	*
NY	*	*	*	*	*	*	*	*	*	*
NC	*	*	*	*	*	*	*	*	*	*
OR	4,720	3,800	80	65	16.9	17.1	141	155	29.80	40.70
PA	*	*	*	*	*	*	*	*	*	*
TN	*	*	*	*	*	*	*	*	*	*
UT	5,900	5,250	125	122	21.2	23.2	*	*	*	*
VA	*	*	*	*	*	*	*	*	*	*
WA	18,500	19,800	173	199	9.4	10.1	522	687	28.20	34.70
WV	*	*	*	*	*	*	*	*	*	*
WI	5,230	2,070	98	45	18.7	21.7	607	377	116.00	182.00
Oth Sts <sup>2</sup>	6,890	8,705	175	296	25.4	34.0	1,792	3,063	260.09	351.87
US <sup>3</sup>	64,320	75,805	1,049	1,158	16.3	15.3	4,729	6,408	73.50	84.50

\* Not published to avoid disclosure of individual operations.

<sup>1</sup> Revised.

<sup>2</sup> Other States include States suppressed due to disclosure.

<sup>3</sup> 20 State total. Due to disclosure, the sum of individual States may not equal the total.

**Distributed Trout Eggs by Region and United States, 2003-2004 <sup>1</sup>**

Region <sup>2</sup>	Number of Eggs		Average Value per 1,000 Eggs		Total Value of Sales	
	2003	2004	2003	2004	2003	2004
	<i>1,000</i>	<i>1,000</i>	<i>Dollars</i>	<i>Dollars</i>	<i>1,000 Dollars</i>	<i>1,000 Dollars</i>
Northeast	*	*	*	*	*	*
South and Central	*	*	*	*	*	*
West	59,000	82,200	14.50	15.40	856	1,266
US <sup>3</sup>	75,600	111,993	16.00	17.40	1,213	1,944

\* Not published to avoid disclosure of individual operations.

<sup>1</sup> Revised.

<sup>2</sup> Data published at the regional level to avoid disclosure of individual operations. Regions are defined as follows - Northeast: CT, MA, ME, NY, PA; South: AR, GA, NC, TN, VA, and WV; Central: MI, MO, and WI; West: CA, CO, ID, OR, UT, and WA.

<sup>3</sup> 20 State total. Due to disclosure, the sum of individual regions may not equal the total.

**Distributed Trout by Size Category, by State  
and United States, 2005-2006<sup>1</sup>**

Size Category and State	Number of Fish		Live Weight				Sales			
			Total		Average Pounds per Fish		Total		Average Value per Pound	
	2005	2006	2005	2006	2005	2006	2005	2006	2005	2006
	<i>1,000</i>	<i>1,000</i>	<i>1,000 Pounds</i>	<i>1,000 Pounds</i>	<i>Pounds</i>	<i>Pounds</i>	<i>1,000 Dollars</i>	<i>1,000 Dollars</i>	<i>Dollars</i>	<i>Dollars</i>
Fish 12" or Longer										
AR	*	*	*	*	*	*	*	*	*	*
CA	2,520	1,910	1,970	1,600	0.8	0.8	4,748	4,784	2.41	2.99
CO	120	170	103	173	0.9	1.0	308	453	2.99	2.62
CT <sup>2</sup>	*	*	*	*	*	*	*	*	*	*
GA	*	*	*	*	*	*	*	*	*	*
ID	128	60	117	60	0.9	1.0	81	53	0.69	0.88
ME <sup>2</sup>	87		85		1.0		*		*	
MA <sup>2</sup>	390		377		1.0		1,885		5.00	
MI	*	*	*	*	*	*	*	*	*	*
MO	*	*	*	*	*	*	*	*	*	*
NY	*	50	*	50	*	1.0	*	174	*	3.47
NC	35	360	40	466	1.1	1.3	48	583	1.19	1.25
OR	*	*	*	*	*	*	*	*	*	*
PA	280	410	343	420	1.2	1.0	1,242	1,277	3.62	3.04
TN <sup>2</sup>	*	*	*	*	*	*	*	*	*	*
UT	44	27	62	25	1.4	0.9	*	87	*	3.46
VA	400	500	344	450	0.9	0.9	998	1,152	2.90	2.56
WA	122	125	148	184	1.2	1.5	519	644	3.51	3.50
WV	*	*	*	*	*	*	*	*	*	*
WI	14	22	26	36	1.9	1.6	107	79	4.12	2.19
Oth Sts <sup>3</sup>	2,479	4,506	2,301	3,758	0.9	0.8	5,926	14,396	2.58	3.83
US <sup>4</sup>	6,619	8,140	5,916	7,222	0.8	0.8	15,862	23,682	2.68	3.28
Fish 6" - 12"										
AR	*	*	*	*	*	*	*	*	*	*
CA	4,770	7,850	1,590	2,950	0.3	0.4	3,752	6,992	2.36	2.37
CO	3,070	3,550	1,210	1,450	0.4	0.4	3,751	3,553	3.10	2.45
CT <sup>2</sup>	*	*	*	*	*	*	*	*	*	*
GA	*	*	*	*	*	*	*	*	*	*
ID	7,280	6,930	1,840	1,820	0.3	0.3	3,073	2,020	1.67	1.11
ME <sup>2</sup>	770		207		0.3		*		*	
MA <sup>2</sup>	250		57		0.2		308		5.40	
MI	2,170	*	601	*	0.3	*	727	*	1.21	*
MO	*	*	*	*	*	*	*	*	*	*
NY	*	4,100	*	1,250	*	0.3	*	4,213	*	3.37
NC	*	*	*	*	*	*	*	*	*	*
OR	6,940	7,230	1,870	1,850	0.3	0.3	6,452	7,308	3.45	3.95
PA	5,500	5,060	2,740	2,760	0.5	0.5	8,686	11,095	3.17	4.02
TN <sup>2</sup>	*	*	*	*	*	*	*	*	*	*
UT	3,410	3,700	780	860	0.2	0.2	*	2,116	*	2.46
VA	*	*	*	*	*	*	*	*	*	*
WA	6,040	6,200	1,280	1,830	0.2	0.3	4,250	6,405	3.32	3.50
WV	*	*	*	*	*	*	*	*	*	*
WI	3,040	3,380	405	613	0.1	0.2	1,600	2,047	3.95	3.34
Oth Sts <sup>3</sup>	14,826	21,289	5,756	7,940	0.3	0.3	21,985	28,448	3.82	3.58
US <sup>4</sup>	58,066	69,289	18,336	23,323	0.3	0.3	54,584	74,197	2.98	3.18

See footnote(s) at end of table.

--continued

**Distributed Trout by Size Category, by State  
and United States, 2005-2006<sup>1</sup> (continued)**

Size Category and State	Number of Fish		Live Weight				Sales			
			Total		Average per 1,000 Fish		Total		Average Value per 1,000 Fish	
	2005	2006	2005	2006	2005	2006	2005	2006	2005	2006
	<i>1,000</i>	<i>1,000</i>	<i>1,000 Pounds</i>	<i>1,000 Pounds</i>	<i>Pounds</i>	<i>Pounds</i>	<i>1,000 Dollars</i>	<i>1,000 Dollars</i>	<i>Dollars</i>	<i>Dollars</i>
Fish 1" - 6"										
AR	*	*	*	*	*	*	*	*	*	*
CA	8,660	2,980	147	54	17.0	18.1	489	136	56.50	45.50
CO	6,420	6,810	157	142	24.5	20.9	524	1,158	81.60	170.00
CT <sup>2</sup>	*	*	*	*	*	*	*	*	*	*
GA	*	*	*	*	*	*	*	*	*	*
ID	7,320	30,200	166	260	22.7	8.6	485	1,501	66.30	49.70
ME <sup>2</sup>	168		2		11.9		*		*	
MA <sup>2</sup>	420		2		4.8		29		70.00	
MI	*	1,240	*	61	*	49.2	*	144	*	116.00
MO	*	*	*	*	*	*	*	*	*	*
NY	*	3,400	*	117	*	34.4	*	575	*	169.00
NC	*	*	*	*	*	*	*	*	*	*
OR	*	*	*	*	*	*	*	*	*	*
PA	3,910	2,180	136	54	34.8	24.8	817	643	209.00	295.00
TN <sup>2</sup>	*	*	*	*	*	*	*	*	*	*
UT	5,620	4,870	142	138	25.3	28.3	*	731	*	150.00
VA	*	*	*	*	*	*	*	*	*	*
WA	9,870	12,500	250	203	25.3	16.2	894	766	90.60	61.30
WV	*	*	*	*	*	*	*	*	*	*
WI	2,850	3,280	60	75	21.1	22.9	413	807	145.00	246.00
Oth Sts <sup>3</sup>	12,807	13,895	314	291	24.5	20.9	2,662	1,169	207.86	84.13
US <sup>4</sup>	58,045	81,355	1,376	1,395	23.7	17.1	6,313	7,630	109.00	93.80

\* Not published to avoid disclosure of individual operations.

<sup>1</sup> Revised.

<sup>2</sup> Estimates discontinued in 2006.

<sup>3</sup> Other States include State estimates not shown and States suppressed due to disclosure.

<sup>4</sup> 20 State total for 2005, US total for 2006.

**Distributed Trout Eggs by Region and United States, 2005-2006<sup>1</sup>**

Region <sup>2</sup>	Number of Eggs		Average Value per 1,000 Eggs		Total Value of Sales	
	2005 <sup>3</sup>	2006 <sup>4</sup>	2005 <sup>3</sup>	2006 <sup>4</sup>	2005 <sup>3</sup>	2006 <sup>4</sup>
	<i>1,000</i>	<i>1,000</i>	<i>Dollars</i>	<i>Dollars</i>	<i>1,000 Dollars</i>	<i>1,000 Dollars</i>
Northeast	*	*	*	*	*	*
South and Central	*	*	*	*	*	*
West	72,020	93,605	23.30	16.70	1,677	1,562
US <sup>5</sup>	113,212	124,100	23.20	18.00	2,626	2,238

\* Not published to avoid disclosure of individual operations.

<sup>1</sup> Revised.

<sup>2</sup> Data published at the regional level to avoid disclosure of individual operations.

<sup>3</sup> Regions for 2005 are defined as follows - Northeast: CT, MA, ME, NY, and PA; South: AR, GA, NC, TN, VA, and WV; Central: MI, MO, and WI; West: CA, CO, ID, OR, UT, and WA.

<sup>4</sup> Regions for 2006 are the same as 2005 but excludes CT, MA, ME, and TN.

<sup>5</sup> 20 State total for 2005, 16 State total for 2006. Due to disclosure, the sum of individual regions may not equal the total.

**Distributed Trout by Size Category, by State  
and United States, 2007**

Size Category and State	Number of Fish	Live Weight		Sales	
		Total	Average Pounds per Fish	Total	Average Value per Pound
	2007	2007	2007	2007	2007
	<i>1,000</i>	<i>1,000 Pounds</i>	<i>Pounds</i>	<i>1,000 Dollars</i>	<i>Dollars</i>
Fish 12" or Longer					
AR	*	*	*	*	*
CA	3,270	3,250	1.0	5,818	1.79
CO	*	*	*	*	*
GA	*	*	*	*	*
ID	*	*	*	*	*
MI	*	*	*	*	*
MO	*	*	*	*	*
NY	*	*	*	*	*
NC	340	342	1.0	530	1.55
OR	*	*	*	*	*
PA	17	20	1.2	76	3.79
UT	*	*	*	*	*
VA	660	463	0.7	1,134	2.45
WA	152	182	1.2	637	3.50
WV	*	*	*	*	*
WI	15	33	2.2	142	4.29
Oth Sts <sup>1</sup>	3,904	3,437	0.8	10,921	3.18
US	8,358	7,727	0.9	19,258	2.49
Fish 6" - 12"					
AR	*	*	*	*	*
CA	7,310	2,200	0.3	5,786	2.63
CO	3,870	1,550	0.4	4,201	2.71
GA	*	*	*	*	*
ID	*	*	*	*	*
MI	*	*	*	*	*
MO	*	*	*	*	*
NY	*	*	*	*	*
NC	*	*	*	*	*
OR	2,740	1,100	0.4	4,477	4.07
PA	9,180	4,600	0.5	21,712	4.72
UT	*	*	*	*	*
VA	*	*	*	*	*
WA	10,500	2,100	0.2	7,602	3.62
WV	*	*	*	*	*
WI	5,490	549	0.1	2,141	3.90
Oth Sts <sup>1</sup>	32,840	10,557	0.3	33,260	3.15
US	71,930	22,656	0.3	79,179	3.49

See footnote(s) at end of table.

--continued

**Distributed Trout by Size Category, by State  
and United States, 2007 (continued)**

Size Category and State	Number of Fish	Live Weight		Sales	
		Total	Average Pounds per 1,000 Fish	Average	Average Value per 1,000 Fish
	2007	2007	2007	2007	2007
	<i>1,000</i>	<i>1,000 Pounds</i>	<i>Pounds</i>	<i>1,000 Dollars</i>	<i>Dollars</i>
Fish 1" - 6"					
AR	*	*	*	*	*
CA	2,400	168	70.0	107	45
CO	*	*	*	*	*
GA	*	*	*	*	*
ID	29,700	1,200	40.4	3,683	124
MI	2,610	101	38.7	133	51
MO	*	*	*	*	*
NY	*	*	*	*	*
NC	*	*	*	*	*
OR	*	*	*	*	*
PA	4,830	203	42.0	1,449	300
UT	*	*	*	*	*
VA	*	*	*	*	*
WA	7,170	264	36.8	825	115
WV	*	*	*	*	*
WI	3,000	105	35.0	612	204
Oth Sts <sup>1</sup>	32,181	1,060	32.9	7,321	227
US	81,891	3,101	37.9	14,130	173

\* Not published to avoid disclosure of individual operations.

<sup>1</sup> Other States include State estimates not shown and States suppressed due to disclosure.

**Distributed Trout Eggs by Region and United States, 2007 <sup>1</sup>**

Region <sup>2</sup>	Number of Eggs	Average Value per 1,000 Eggs	Total Value of Sales
	2007	2007	2007
	<i>1,000</i>	<i>1,000</i>	<i>Dollars</i>
Northeast	*	*	*
South and Central	*	*	*
West	89,998	19.20	1,725
US <sup>3</sup>	132,236	19.80	2,614

\* Not published to avoid disclosure of individual operations.

<sup>1</sup> Data published at the regional level to avoid disclosure of individual operations.

<sup>2</sup> Regions for 2007 are defined as follows - Northeast: NY, and PA; South: AR, GA, NC, VA, and WV; Central: MI, MO, and WI; West: CA, CO, ID, OR, UT, and WA.

<sup>3</sup> 16 State total.



## Reliability of Trout Production Estimates

**Survey Procedures:** Data for trout production are collected from all known producers. Individual NASS field offices maintain a list of all known trout producers and use known sources of producers to update their lists. All known trout producers are mailed a questionnaire as close as possible to January 1 and given adequate time to respond by mail. Those that do not respond by mail are telephoned or possibly enumerated in person during the middle of January. Care is exercised to ensure all operations are accounted for.

**Estimation Procedures:** Sound statistical methodology is employed to derive the estimates from reported data. All data are analyzed for unusual values. Data from each operation are compared to their own past operating profile and to trends from similar operations. Data for missing operations were estimated based on similar operations or historical data. NASS field offices prepare these estimates by using a combination of survey indications and historic trends. Individual State estimates are reviewed by the Agricultural Statistics Board for reasonableness.

**Revision policy:** Estimates for the previous year are subject to revision when current estimates are made. Revisions are the result of late or corrected data.

**Reliability:** Trout production estimates are based on a census of all known active producers and therefore, have no sampling variability. However, estimates are subject to errors such as omissions, duplication, and mistakes in reporting, recording, and processing the data. While these errors cannot be measured directly, they are minimized through strict quality controls in the data collection process and a careful review of all reported data for consistency and reasonableness.

## Terms and Definitions Used for Trout Production Estimates

**12" or Longer Fish:** Grown commercially for food, usually weighing from three-fourths to one and one-half pounds.

**6"- 12" Fish:** Usually stockers that weigh less than three-fourths of a pound. They may be sold as foodsize fish.

**Fingerlings:** Fish usually from 1 to 6 inches long.

**Live Haulers:** Person who buys live fish on the farm and functions as a middleman.

**Chemicals:** Includes losses from pesticides or herbicide poisoning.

**Disease:** Includes losses from both parasitic and bacterial caused sickness.

**Drought:** Includes losses from lack of water causing oxygen depletion.

**Floods:** Includes losses from too much water washing the fish away.

**Predators:** Includes losses from mink, otters, birds, and other animals.

**Theft/Vandalism:** The unauthorized removal of fish and/or the destruction of property causing a loss of fish by intentional acts by persons known or unknown.

## Information Contacts

Listed below are the commodity specialists in the Livestock Branch of the National Agricultural Statistics Service to contact for additional information.

Dan Kerestes, Chief, Livestock Branch..... (202) 720-3570

Bruce Boess, Head, Poultry and Specialty Commodities Section ..... (202) 720-4447

David Colwell - Cold Storage ..... (202) 720-8784

Doug Bounds - Poultry Slaughter, Turkey Hatchery, Turkeys Raised ..... (202) 690-3237

Chris Hawthorn - Catfish Processing, Catfish Production, Trout Production,  
Census of Aquaculture, Egg Products, Mink ..... (202) 720-0585

Kim Linonis - Layers, Eggs..... (202) 690-8632

Troy Marshall - Broiler Hatchery, Chicken Hatchery, Honey ..... (202) 720-3244

## ACCESS TO REPORTS!!

---

For your convenience, there are several ways to obtain NASS reports, data products, and services:

### INTERNET ACCESS

All NASS reports are available free of charge. For free access, connect to the Internet and go to the NASS Home Page at [www.nass.usda.gov](http://www.nass.usda.gov).

### E-MAIL SUBSCRIPTION

All NASS reports are available by subscription free of charge direct to your e-mail address. Starting with the NASS Home Page at [www.nass.usda.gov](http://www.nass.usda.gov), under the right navigation, *Receive reports by Email*, click on **National** or **State**. Follow the instructions on the screen.

-----

### PRINTED REPORTS OR DATA PRODUCTS

**CALL OUR TOLL-FREE ORDER DESK: 800-999-6779 (U.S. and Canada)**  
**Other areas, please call 703-605-6220      FAX: 703-605-6900**  
**(Visa, MasterCard, check, or money order acceptable for payment.)**

-----

### ASSISTANCE

For **assistance** with general agricultural statistics or further information about NASS or its products or services, contact the **Agricultural Statistics Hotline** at **800-727-9540**, 7:30 a.m. to 4:00 p.m. ET, or e-mail: [nass@nass.usda.gov](mailto:nass@nass.usda.gov).

The U.S. Department of Agriculture (USDA) prohibits discrimination in all its programs and activities on the basis of race, color, national origin, age, disability, and where applicable, sex, marital status, familial status, parental status, religion, sexual orientation, genetic information, political beliefs, reprisal, or because all or a part of an individual's income is derived from any public assistance program. (Not all prohibited bases apply to all programs.) Persons with disabilities who require alternative means for communication of program information (Braille, large print, audiotape, etc.) should contact USDA's TARGET Center at (202) 720-2600 (voice and TDD).

To file a complaint of discrimination, write to USDA, Director, Office of Civil Rights, 1400 Independence Avenue, S.W., Washington, D.C. 20250-9410, or call (800) 795-3272 (voice) or (202) 720-6382 (TDD). USDA is an equal opportunity provider and employer.

**USDA Data Users' Meeting  
Monday, November 2, 2009**

**Crowne Plaza Hotel Chicago-Metro  
Chicago, Illinois 60661  
(312) 829-5000**

The USDA's National Agricultural Statistics Service will be organizing an open forum for data users. The purpose will be to provide updates on pending changes in the various statistical and information programs and seeks comments and input from data users. Other USDA agencies to be represented will include the Agricultural Marketing Service, the Economic Research Service, the Foreign Agricultural Service, and World Agricultural Outlook Board. The Foreign Trade Division from the Census Bureau will also be included in the meeting.

For registration details or additional information for the Data Users' Meeting, see the NASS homepage at [www.nass.usda.gov/forum/](http://www.nass.usda.gov/forum/) or contact Marjorie Taylor (NASS) at (202) 690-8141 or at [marjorie\\_taylor@nass.usda.gov](mailto:marjorie_taylor@nass.usda.gov).

This Data Users' Meeting precedes an Industry Outlook Conference that will be held at the same location on Tuesday, November 3, 2009. The Outlook Conference brings together analysts from various commodity sectors to discuss the outlook situation. For registration details or additional information for the Industry Outlook Meeting see the Livestock and Marketing Information Center (LMIC) homepage at [www.lmic.info](http://www.lmic.info) or contact Jim Robb at (720) 544-2941 or at [robb@lmic.info](mailto:robb@lmic.info).