



Catfish Feed Deliveries

Released July 21, 2010, by the National Agricultural Statistics Service (NASS), Agricultural Statistics Board, U.S. Department of Agriculture. For information on *Catfish Feed Deliveries* call Charles Butler at 601-965-4575, office hours 8:00 a.m. to 4:30 p.m. CT.

June 2010 Catfish Feed Deliveries Down 11 Percent from Last Year

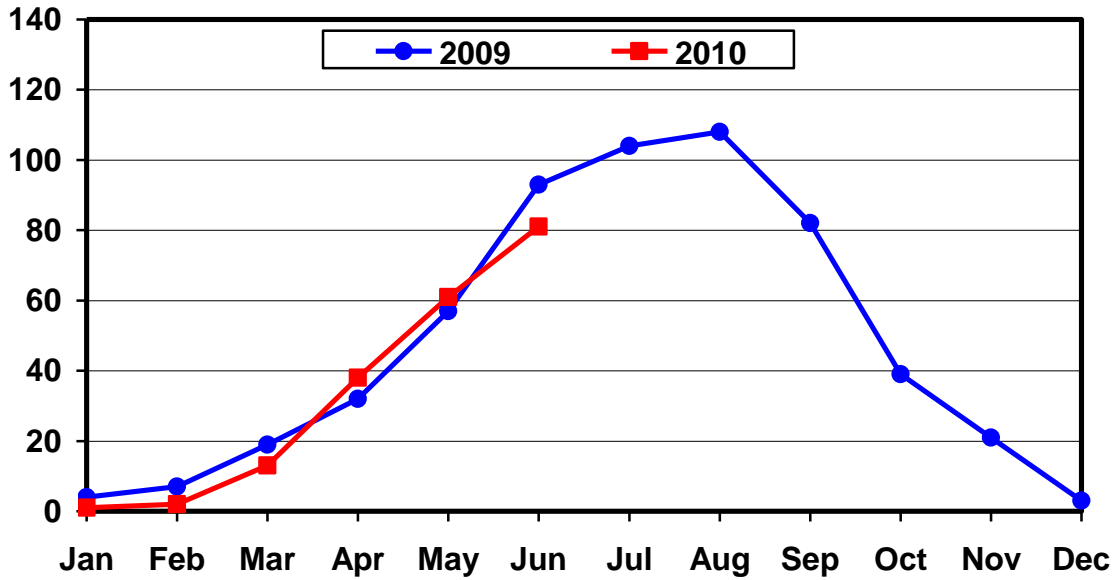
Total catfish feed delivered in the United States during June was 85,686 tons, down 11 percent from June 2009, but up 34 percent from the previous month. Foodsize catfish feed delivered totaled 80,769 tons, down 13 percent from the corresponding month a year ago. Feed delivered for fingerlings and broodfish totaled 4,917 tons, up 54 percent from the corresponding month a year ago.

June feed delivered to Mississippi catfish growers for foodsize fish totaled 39,337 tons, down 13 percent from last year. Mississippi accounted for 49 percent of the total foodsize catfish feed delivered to U.S. farmers.

The other major States with catfish feed deliveries for foodsize fish in June and their comparison to the previous year were Alabama with 27,165 tons, down 6 percent; Arkansas with 7,102 tons, down 35 percent; and Louisiana with 735 tons, down 53 percent.

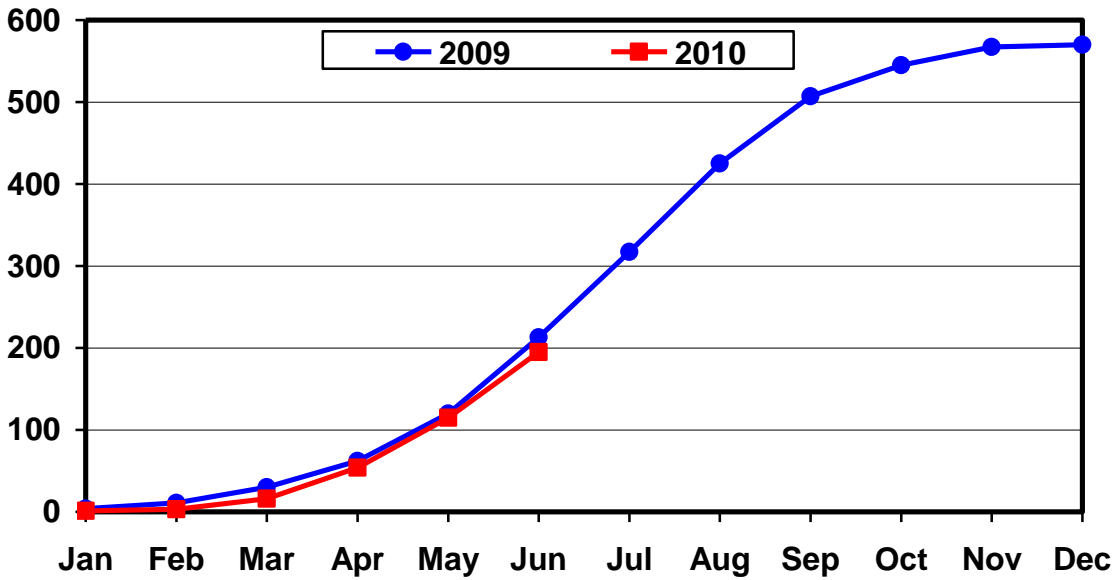
U. S. Quantity of Foodsize Catfish Feed Delivered, Monthly Totals

Thousand Tons



U.S. Quantity of Foodsize Catfish Feed Delivered, Cumulative Totals

Thousand Tons



**Catfish Feed: Tons Delivered For Foodsize Fish,
United States, 2009-2010**

Month	By Month		Percent of Previous Year	Cumulative		Percent of Previous Year
	2009	2010		2009	2010	
	<i>Tons</i>	<i>Tons</i>	<i>Percent</i>	<i>Tons</i>	<i>Tons</i>	<i>Percent</i>
Jan	4,455	1,433	32	4,455	1,433	32
Feb	7,034	1,528	22	11,489	2,961	26
Mar	18,927	12,680	67	30,416	15,641	51
Apr	31,621	38,080	120	62,037	53,721	87
May	57,466	60,913	106	119,503	114,634	96
Jun	93,123	80,769	87	212,626	195,403	92
Jul	104,060			316,686		
Aug	107,840			424,526		
Sep	82,125			506,651		
Oct	38,828			545,479		
Nov	21,280			566,759		
Dec	3,221			569,980		

**Catfish Feed: Tons Delivered For Fingerlings and Broodfish,
United States, 2009-2010 ¹**

Month	By Month		Percent of Previous Year	Cumulative		Percent of Previous Year
	2009	2010		2009	2010	
	<i>Tons</i>	<i>Tons</i>	<i>Percent</i>	<i>Tons</i>	<i>Tons</i>	<i>Percent</i>
Jan	254	59	23	254	59	23
Feb	268	142	53	522	201	39
Mar	927	900	97	1,449	1,101	76
Apr	1,116	2,065	185	2,565	3,166	123
May	1,774	3,198	180	4,339	6,364	147
Jun	3,191	4,917	154	7,530	11,281	150
Jul	4,209			11,739		
Aug	5,453			17,192		
Sep	3,513			20,705		
Oct	1,358			22,063		
Nov	1,314			23,377		
Dec	133			23,510		

¹ The sum of the published States may not equal the total to avoid disclosure of individual operations.

**Catfish Feed: Tons Delivered For Foodsize Fish,
Alabama, 2009-2010**

Month	By Month		Percent of Previous Year	Cumulative		Percent of Previous Year
	2009	2010		2009	2010	
	<i>Tons</i>	<i>Tons</i>	<i>Percent</i>	<i>Tons</i>	<i>Tons</i>	<i>Percent</i>
Jan	1,992	392	20	1,992	392	20
Feb	2,490	599	24	4,482	991	22
Mar	7,290	3,472	48	11,772	4,463	38
Apr	10,891	12,416	114	22,663	16,879	74
May	17,599	19,589	111	40,262	36,468	91
Jun	29,018	27,165	94	69,280	63,633	92
Jul	36,818			106,098		
Aug	32,334			138,432		
Sep	24,546			162,978		
Oct	14,442			177,420		
Nov	8,762			186,182		
Dec	2,404			188,586		

**Catfish Feed: Tons Delivered For Foodsize Fish,
Arkansas, 2009-2010**

Month	By Month		Percent of Previous Year	Cumulative		Percent of Previous Year
	2009	2010		2009	2010	
	<i>Tons</i>	<i>Tons</i>	<i>Percent</i>	<i>Tons</i>	<i>Tons</i>	<i>Percent</i>
Jan	165	76	46	165	76	46
Feb	509	75	15	674	151	22
Mar	2,084	1,406	67	2,758	1,557	56
Apr	3,922	4,087	104	6,680	5,644	84
May	7,437	6,336	85	14,117	11,980	85
Jun	10,882	7,102	65	24,999	19,082	76
Jul	10,429			35,428		
Aug	14,450			49,878		
Sep	9,502			59,380		
Oct	2,916			62,296		
Nov	1,310			63,606		
Dec	97			63,703		

**Catfish Feed: Tons Delivered For Fingerlings and Broodfish,
Arkansas, 2009-2010**

Month	By Month		Percent of Previous Year	Cumulative		Percent of Previous Year
	2009	2010		2009	2010	
	<i>Tons</i>	<i>Tons</i>	<i>Percent</i>	<i>Tons</i>	<i>Tons</i>	<i>Percent</i>
Jan	50	27	54	50	27	54
Feb	156	122	78	206	149	72
Mar	314	552	176	520	701	135
Apr	144	718	499	664	1,419	214
May	173	789	456	837	2,208	264
Jun	283	474	167	1,120	2,682	239
Jul	637			1,757		
Aug	820			2,577		
Sep	389			2,966		
Oct	310			3,276		
Nov	255			3,531		
Dec	117			3,648		

**Catfish Feed: Tons Delivered For Foodsize Fish,
Louisiana, 2009-2010**

Month	By Month		Percent of Previous Year	Cumulative		Percent of Previous Year
	2009	2010		2009	2010	
	<i>Tons</i>	<i>Tons</i>	<i>Percent</i>	<i>Tons</i>	<i>Tons</i>	<i>Percent</i>
Jan	168	7	4	168	7	4
Feb	122	4	3	290	11	4
Mar	518	286	55	808	297	37
Apr	1,312	565	43	2,120	862	41
May	1,520	678	45	3,640	1,540	42
Jun	1,556	735	47	5,196	2,275	44
Jul	1,411			6,607		
Aug	1,601			8,208		
Sep	1,180			9,388		
Oct	116			9,504		
Nov	1,435			10,939		
Dec	12			10,951		

**Catfish Feed: Tons Delivered For Foodsize Fish,
Mississippi, 2009-2010**

Month	By Month		Percent of Previous Year	Cumulative		Percent of Previous Year
	2009	2010		2009	2010	
	<i>Tons</i>	<i>Tons</i>	<i>Percent</i>	<i>Tons</i>	<i>Tons</i>	<i>Percent</i>
Jan	782	224	29	782	224	29
Feb	2,147	193	9	2,929	417	14
Mar	6,336	4,536	72	9,265	4,953	53
Apr	12,628	17,203	136	21,893	22,156	101
May	26,165	29,285	112	48,058	51,441	107
Jun	45,116	39,337	87	93,174	90,778	97
Jul	49,001			142,175		
Aug	53,148			195,323		
Sep	41,091			236,414		
Oct	17,762			254,176		
Nov	7,523			261,699		
Dec	222			261,921		

**Catfish Feed: Tons Delivered For Fingerlings and Broodfish,
Mississippi, 2009-2010**

Month	By Month		Percent of Previous Year	Cumulative		Percent of Previous Year
	2009	2010		2009	2010	
	<i>Tons</i>	<i>Tons</i>	<i>Percent</i>	<i>Tons</i>	<i>Tons</i>	<i>Percent</i>
Jan	41	8	20	41	8	20
Feb	73	2	3	114	10	9
Mar	460	280	61	574	290	51
Apr	855	1,134	133	1,429	1,424	100
May	1,477	2,294	155	2,906	3,718	128
Jun	2,688	4,287	159	5,594	8,005	143
Jul	3,445			9,039		
Aug	4,479			13,518		
Sep	2,796			16,314		
Oct	952			17,266		
Nov	1,006			18,272		
Dec	1			18,273		

**Catfish Feed: Tons Delivered For Foodsize Fish,
Other States East of the Mississippi River, 2009-2010**

Month	By Month		Percent of Previous Year	Cumulative		Percent of Previous Year
	2009	2010		2009	2010	
	<i>Tons</i>	<i>Tons</i>	<i>Percent</i>	<i>Tons</i>	<i>Tons</i>	<i>Percent</i>
Jan	357	90	25	357	90	25
Feb	426	123	29	783	213	27
Mar	967	715	74	1,750	928	53
Apr	1,019	1,563	153	2,769	2,491	90
May	1,504	1,540	102	4,273	4,031	94
Jun	2,023	2,009	99	6,296	6,040	96
Jul	2,272			8,568		
Aug	2,449			11,017		
Sep	2,453			13,470		
Oct	1,255			14,725		
Nov	425			15,150		
Dec	128			15,278		

**Catfish Feed: Tons Delivered For Foodsize Fish,
Other States West of the Mississippi River, 2009-2010**

Month	By Month		Percent of Previous Year	Cumulative		Percent of Previous Year
	2009	2010		2009	2010	
	<i>Tons</i>	<i>Tons</i>	<i>Percent</i>	<i>Tons</i>	<i>Tons</i>	<i>Percent</i>
Jan	991	644	65	991	644	65
Feb	1,340	534	40	2,331	1,178	51
Mar	1,732	2,265	131	4,063	3,443	85
Apr	1,849	2,246	121	5,912	5,689	96
May	3,241	3,485	108	9,153	9,174	100
Jun	4,528	4,421	98	13,681	13,595	99
Jul	4,129			17,810		
Aug	3,858			21,668		
Sep	3,353			25,021		
Oct	2,337			27,358		
Nov	1,825			29,183		
Dec	358			29,541		

**Catfish Feed: Tons Delivered For Fingerlings and Broodfish,
Other States West of the Mississippi River, 2009-2010**

Month	By Month		Percent of Previous Year	Cumulative		Percent of Previous Year
	2009	2010		2009	2010	
	<i>Tons</i>	<i>Tons</i>	<i>Percent</i>	<i>Tons</i>	<i>Tons</i>	<i>Percent</i>
Jan	143	2	1	143	2	1
Feb	7	2	29	150	4	3
Mar	58	42	72	208	46	22
Apr	37	102	276	245	148	60
May	72	31	43	317	179	56
Jun	98	69	70	415	248	60
Jul	62			477		
Aug	68			545		
Sep	255			800		
Oct	28			828		
Nov	27			855		
Dec	9			864		

Reliability of Catfish Feed Deliveries Estimates

Survey Procedures: All participating catfish feed mills are feed mills that produce and deliver catfish feed to bonafide catfish producers. Survey data for catfish feed are collected from feed mills by the USDA-NASS Mississippi Field Office, which is responsible for ensuring survey coverage is as complete as possible. Mills are contacted by mail, telephone, fax, or internet. Diligent effort is made to ensure that all operations are accounted for in the estimate.

Estimation Procedures: The "Catfish Feed Deliveries" report refers strictly to catfish feed *delivered* to bonafide catfish producers and excludes catfish feed delivered to producers of other species. The totals include both bagged and bulk feed. Prior to summarization, questionnaires are compared to previous reports for comparability. Estimates are made for feed mills whose reports are not available in time to be included in the release. Those mills are identified by an asterisk on page 11 of this release. Estimates are based on the mill's previous reports and current conditions. Published totals are a straight summation of the individual reports and estimated data.

If a mill uses a fiscal accounting system, proration is used to convert reported data to a calendar month basis.

Two unusual features of this report are worthy of note: (1) cooperating feed mills are listed by name, and (2) it is impossible for the public to infer the amount of catfish feed *produced* in each State. Since many mills *deliver* feed to more than one State and to growers of other species, any inferences about overall production per State or per mill are not valid.

Revision Policy: Revisions may be necessary in the following month's publication pending a review of late reports received from mills. Revisions to previous estimates are made to improve month-to-month relationships. Estimates for the previous month are subject to revision in all States and regions monthly totals. In February, all monthly estimates for the previous year are reviewed and subject to revisions. The review is primarily based on data that may have been received after the original estimates were published.

Reliability: Estimates are based on data from cooperating catfish feed mills, and therefore have no sampling variability. However, estimates may be subject to errors such as omissions, duplication, mistakes in reporting, recording, and processing of data. These errors are minimized through strict quality controls in the edit and summarization process and a careful review of all reported data for consistency and reasonableness.

Terms and Definitions Used for Catfish Feed Deliveries Estimates

Broodfish - Fish kept for egg production, including males. Broodfish produce the fertilized eggs that go to hatcheries. The most desirable size is 3 to 10 pounds or 4 to 6 years of age.

Catfish Feed - For the purposes of this report catfish feed is defined as feed *delivered* to bonafide catfish producers. Thus, it is not the absolute total amount of feed produced or even sold by a mill. (Some catfish feed is sold to producers of other species of fish.) The definition includes medicated feed. Catfish feed is designed to float on the surface of the water. Catfish are fed this way from the moment they hatch. Therefore, they learn to go to the surface for feed. The result is a clean nutritious diet for American farm raised catfish.

Catfish Feed for Foodsize Fish - Feed containing pellets larger than 1/8 of an inch.

Catfish Feed for Fingerlings/Broodfish - Feed containing pellets 1/8 of an inch or smaller.

Fingerlings – Fish weighing 2 to 60 pounds per 1,000 fish or 2 to 6 inches in length.

Foodsize Fish - Fish being grown commercially for human consumption. Optimum sizes at harvest depend on the market but are generally no lower than 3/4 pound but near one pound.

Data were compiled in cooperation with the following feed mills:

Alabama Feed Mill LLC	Land O Lakes
Arkat Feeds	Melick Aqua Feed LLC
Cargill Animal Nutrition	Rangen Inc.
Carolina Fish Feeds	Silver Cup
Delta Western	Southfresh Feeds
Fishbelt Feeds Inc.	Star Milling Co.
Flint River Mills Inc.	Topwater Feed Mill

Information Contacts

Listed below are the commodity specialists in the Livestock Branch of the National Agricultural Statistics Service to contact for additional information.

Dan Kerestes, Chief, Livestock Branch	(202) 720-3570
Bruce Boess, Head, Poultry and Specialty Commodities Section	(202) 720-4447
Doug Bounds - Poultry Slaughter, Turkey Hatchery, Turkeys Raised	(202) 690-3237
Charles Butler - Catfish Feed Deliveries	(601) 965-4575
David Colwell - Cold Storage	(202) 720-8784
Chris Hawthorn - Catfish Processing, Catfish Production, Trout Production, Census of Aquaculture, Egg Products, Mink	(202) 720-0585
Kim Linonis - Layers, Eggs	(202) 690-8632
Troy Marshall - Broiler Hatchery, Chicken Hatchery, Honey	(202) 720-3244

ACCESS TO REPORTS!!

For your convenience, there are several ways to obtain NASS reports, data products, and services:

INTERNET ACCESS

All NASS reports are available free of charge on the worldwide Internet. For access, connect to the Internet and go to the NASS Home Page at: www.nass.usda.gov.

E-MAIL SUBSCRIPTION

All NASS reports are available by subscription free of charge direct to your e-mail address. Starting with the NASS Home Page at www.nass.usda.gov, under the right navigation, *Receive reports by Email*, click on **National** or **State**. Follow the instructions on the screen.

PRINTED REPORTS OR DATA PRODUCTS

CALL OUR TOLL-FREE ORDER DESK: 800-999-6779 (U.S. and Canada)
Other areas, please call 703-605-6220 FAX: 703-605-6900
(Visa, MasterCard, check, or money order acceptable for payment.)

ASSISTANCE

For **assistance** with general agricultural statistics or further information about NASS or its products or services, contact the **Agricultural Statistics Hotline** at **800-727-9540**, 7:30 a.m. to 4:00 p.m. ET, or e-mail: nass@nass.usda.gov.

The U.S. Department of Agriculture (USDA) prohibits discrimination in all its programs and activities on the basis of race, color, national origin, age, disability, and where applicable, sex, marital status, familial status, parental status, religion, sexual orientation, genetic information, political beliefs, reprisal, or because all or part of an individual's income is derived from any public assistance program. (Not all prohibited bases apply to all programs.) Persons with disabilities who require alternative means for communication of program information (Braille, large print, audiotape, etc.) should contact USDA's TARGET Center at (202) 720-2600 (voice and TDD).

To file a complaint of discrimination, write to USDA, Director, Office of Civil Rights, 1400 Independence Avenue, S.W., Washington, D.C. 20250-9410, or call (800) 795-3272 (voice) or (202) 720-6382 (TDD). USDA is an equal opportunity provider and employer.