

User Guide

FY 2009 StLA Survey

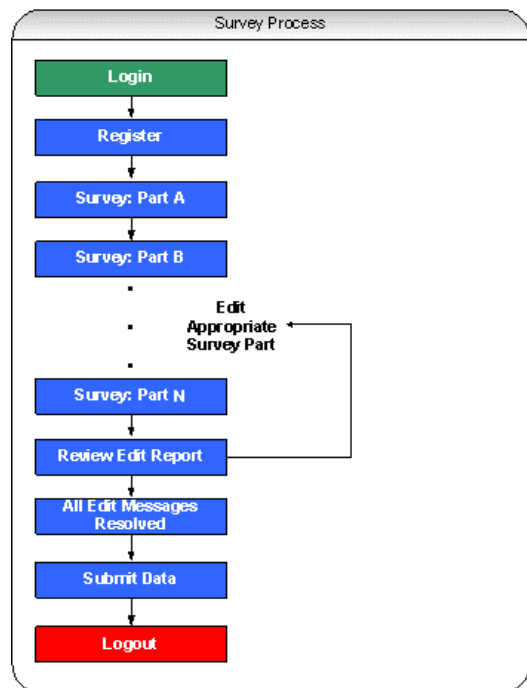
Introduction

The User Guide contains important information for proper use of the web-based StLA Survey system. If you have a problem in the use of the system, please contact the survey administrator at govs.stla@census.gov or 1-800-451-6235.

Overview

The StLA survey consists of Parts A through N. The entire process consists of seven steps: login, registration, data entry, reviewing the edit report, resolving all edit messages, submitting the survey data, and submitting the State Librarian certification form to certify the accuracy of the data.

Online State Librarian certification of the data's accuracy works as follows: After the Key Holder locks the survey data, a message will be sent to the State Librarian's e-mail describing the electronic and paper certification options. The State Librarian can certify online by clicking on a specified link within the e-mail. The Key Holder will be informed immediately via e-mail if the State Librarian uses this method. Otherwise, the Key Holder should submit the signed certification form to the Census Bureau by regular mail or fax.



Login

Access to the survey system is granted with a valid user ID and password. After a successful login, the user should select the **Continue** button to advance to the survey Part A page. This page includes a banner with five menus (**Survey**, **Reports**, **Tools**, **Help**, and **Log Off**), and links on the left side of the screen to the **Registration** site and Parts A to N of the survey.

The first time you log into the system, you will be required to register. On subsequent logins, you will be taken to the survey Part A page.

Registration

Prior to entering the survey data, registration must be completed by providing information for all items with asterisks (**). Registration information may be updated (for example, adding additional users) at any time prior to submitting the survey.

Survey Data Entry

You can begin data entry immediately after completing registration. There is no specific order required for completing the survey. However, we recommend moving from Part A through Part N in sequence, as edits in later sections are affected by entries in earlier sections.

Several screens (e.g., Part A. State Library Agency Identification) are pre-filled with data previously submitted for your agency. *Please update any information that has changed.*

Saving/viewing your data—Data are saved on a screen-by-screen basis. Always click the **Verify & Save** button at the top or bottom of the screen before proceeding to another screen. **Verify & Save** will save your data and keep you on the current screen. The **Proceed** button will advance you to the next screen—you will be prompted to save your data first if you have made changes to the screen. *It is recommended that you save your data frequently.*

When a screen is saved, edit icons will identify data cells that have missing or questionable data. Click on an icon to review the edit message and the required action.

Navigating the survey—Use the **Tab** and **Shift+Tab** keys to move back and forth between the data entry boxes. The **Delete** and **Backspace** keys are active inside each data entry box.

You can also move around the data entry screen by positioning the mouse pointer directly on the data entry box, radio button, check box, or pull-down list, and clicking on the left mouse button. A pop-up menu with the **Cut**, **Copy**, and **Paste** commands will appear in text boxes when the right mouse button is pressed.

Edit Report

The **Edit Report** option is found on the survey page. The **Edit Report** may be viewed on-screen or printed and is an easy-to-read table with six columns, as described below:

- Edit No. (edit message number)
- Line Number (survey item)
- Screen Name (survey part)
- Edit Message
- Severity (edit message type—Fatal or Explanation), and
- Accepted (edit message resolution status—Yes or No)

All edit messages must be resolved, by revising or confirming the data, in order to submit the survey data. To make corrections to the data, click on the survey part (for example, Part J. Revenue) in the "Screen Name" column. To confirm the data, with or without an explanation, click on **Explanation** in the "Severity" column. Your explanations are recorded in the **Edit Report** as "Reasons". The "Accepted" column indicates whether the edit message is resolved ("Yes" or "No"). Once all edit messages are resolved, the "Accepted" column of the **Edit Report** will display "Yes" for each message, and the **Submit Data** button will appear at the top of the survey page. (Subsequent data corrections may generate new edit messages that you will need to resolve before submitting the survey data.)

Two additional options are included on the **Edit Report** page. The **Edit Detail Report** displays the data related to each edit message. This report is provided as a reference tool when reviewing and resolving edit messages. The **Edit Reason Report** lists all edit messages for which the user has provided explanations or "Reasons".

Edit messages are generated for individual survey pages via the **Verify & Save** process. The edit icons serve as links to the edit messages. Clicking on an icon opens an "Edit Description" dialog box containing the edit message and the action required to resolve the message. There are two types of edit messages, each with a unique icon:

- **Fatal** (denoted with a red icon). The data must be revised (either missing data must be provided, or correct data must be reported). To revise the data, click Close to close the edit message box, and enter or edit the data.

- **Explanation** (denoted with a yellow icon). The data are questionable. The user should review the data for accuracy and enter correct data if appropriate. If the questionable data are correct, the user can resolve the edit message in one of two ways: (1) click Confirm to verify the data without giving an explanation, or (2) enter an explanation in the memo field provided and click Save reason. *Providing an explanation may eliminate the need for future edit follow-up about the data.* You will be prompted to click the Refresh Screen & Close button to close the window.

The Key Holder cannot submit the survey until all data generating "Fatal error" icons have been revised (either missing data must be provided, or correct data must be reported) and all data generating "Confirm" or "Explain" icons have been confirmed or explained.

Submitting the Survey Data

When the survey has been completed and all edit messages have been resolved, the **Edit Report** "Accepted" column will display "Yes" and you will receive the following message: "You are ready to submit data." To submit the data, you must run the **Edit Report**. You must then return to the survey page by selecting Survey on the top menu bar (*do not use the browser Back button*) and then select the **Submit Data** option at the top of the page. If you are on the last screen, all edit messages are resolved, and you select the **Save** option, you will still need to select the Edit Report option, then select Survey on the top menu bar, and finally select the **Submit Data** option.

The Key Holder must select **Submit Data** to officially complete the survey data submission process. Census is notified at this time that the survey is ready for their review. An e-mail is sent to the user confirming that the survey data have been submitted.

The State Librarian certification form should be submitted after the data are submitted (see "Overview" section above).

After the user selects **Submit Data**, the data will still be viewable and printable. However, additional changes to the data will not be possible unless the Key Holder submits a request to the StLA Help Desk. *This action should not be a substitute for entering the correct data initially.* If you discover an error in your data, contact the StLA Help Desk at govs.stla@census.gov or 1-800-451-6235. They will assist you in correcting any errors and resubmitting the data.

Printing

A blank version of the survey data entry form may be viewed and printed using the Survey Form (Blank) option found on the Reports menu. A File Download dialog box will open, from which you are able to Open or Save the .pdf document. Once you open the document, you can print it if you wish. Use the browser's Back button to return to the previously viewed page.

Users can view and print the form after data have been entered via the **Survey Form (Data)** option found on the **Reports** menu. The other steps are the same as for blank forms. To print directly from the data entry screens, use the browser **Print** button or the **Print** option (under the **File** menu). A print option is also available from the menu that appears when the right mouse button is pressed.

Users can print the survey **Instructions, Edit Messages and Conditions**, and other information found on the **Help** menu using the browser and mouse print options described above.

Log Off

Users may leave a session at any time using the **Log Off** button found on the banner. Be sure to save all data before logging off by pressing the **Verify & Save** button. Future logins allow users to continue where they left off.