



Released August 27, 2010, by the National Agricultural Statistics Service (NASS), Agricultural Statistics Board, United States Department of Agriculture (USDA).

## Special Note

NASS is in the process of modifying report layouts in order to improve readability. This is the first issue produced using the new layout. This report issue is published using both layouts but future issues will only be produced using this layout. The previous layout is available on the NASS website: <http://www.nass.usda.gov>.

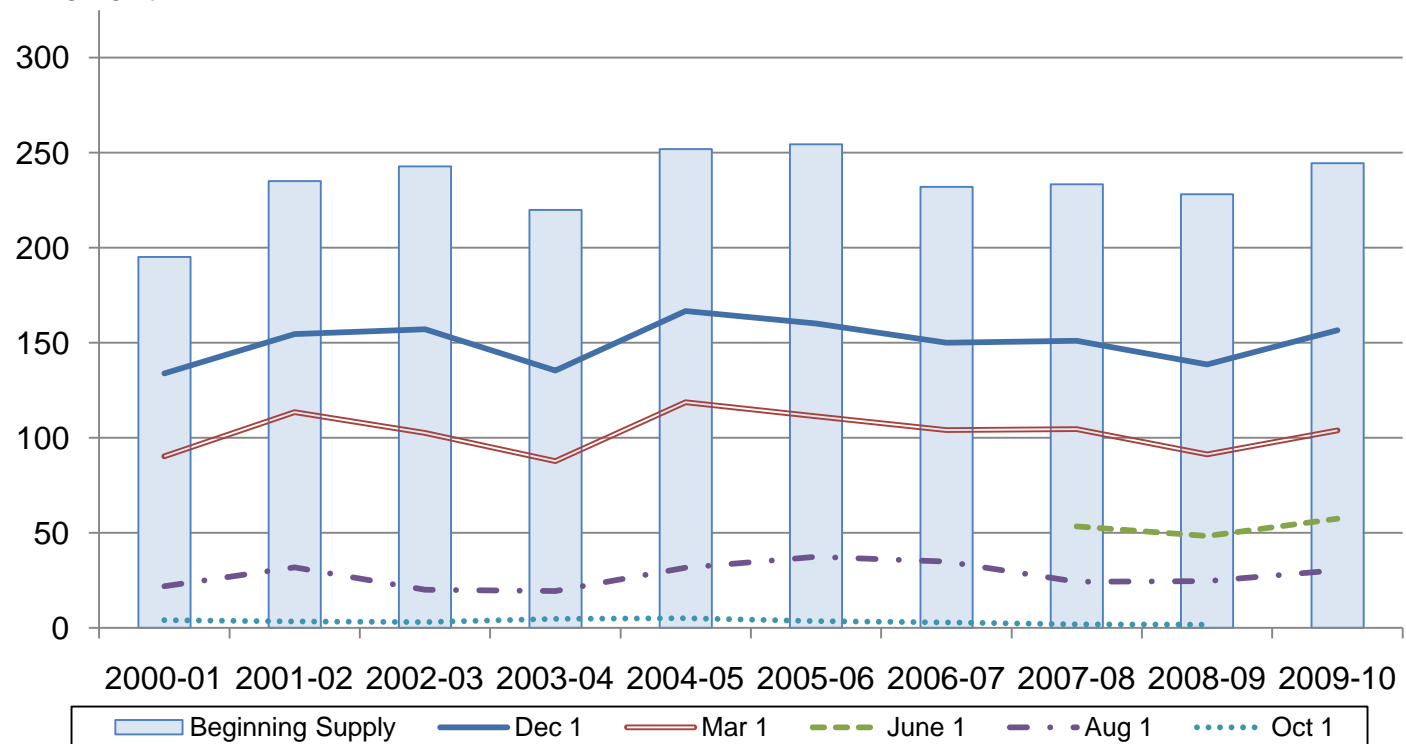
## Rough Rice Stocks Up 23 Percent from August 2009

**Rough rice stocks** in all positions on August 1, 2010 totaled 30.4 million hundredweight (cwt), up 23 percent from the total on August 1, 2009. Stocks held on farms totaled 1.20 million cwt and off-farm stocks totaled 29.2 million cwt. Long grain varieties accounted for 64 percent of the total rough rice, medium grain accounted for 32 percent, and short grain varieties accounted for 4 percent.

**Milled rice stocks** in all positions totaled 4.38 million cwt, up 7 percent from a year ago. Milled rice stocks were comprised of 3.37 million cwt of whole kernel rice and 1.01 million cwt of second heads, screenings, and brewers rice.

## Rough Rice Stocks – United States

Million cwt



## Rice Stocks by Position and Month – United States: 2009 and 2010 (Domestic Units)

[Blank data cells indicate estimation period has not yet begun]

Date	2009			2010		
	On farms	Off farms <sup>1</sup>	Total all positions	On farms	Off farms <sup>1</sup>	Total all positions
	(1,000 cwt)	(1,000 cwt)	(1,000 cwt)	(1,000 cwt)	(1,000 cwt)	(1,000 cwt)
<b>Rough rice</b>						
March 1 .....	21,286	70,042	91,328	23,465	80,516	103,981
June 1 .....	6,920	41,446	48,366	6,310	51,098	57,408
August 1 .....	876	23,787	24,663	1,200	29,176	30,376
October 1 <sup>2</sup> .....	(D)	(D)	1,832			
December 1 .....	51,880	104,726	156,606			
<b>Milled rice</b>						
March 1 .....	(X)	4,732	4,732	(X)	4,895	4,895
June 1 .....	(X)	5,724	5,724	(X)	4,520	4,520
August 1 .....	(X)	4,077	4,077	(X)	4,380	4,380
October 1 <sup>2</sup> .....	(X)	1,483	1,483			
December 1 .....	(X)	5,679	5,679			

(D) Withheld to avoid disclosing data for individual operations.

(X) Not applicable.

<sup>1</sup> Includes stocks at mills, elevators, warehouses, ports, and in transit.

<sup>2</sup> California only.

## Rice Stocks by Position and Month – United States: 2009 and 2010 (Metric Units)

[Data may not add to totals due to rounding. Blank data cells indicate estimation period has not yet begun]

Date	2009			2010		
	On farms	Off farms <sup>1</sup>	Total all positions	On farms	Off farms <sup>1</sup>	Total all positions
	(1,000 cwt)	(1,000 cwt)	(1,000 cwt)	(1,000 cwt)	(1,000 cwt)	(1,000 cwt)
<b>Rough rice</b>						
March 1 .....	965,520	3,177,050	4,142,570	1,064,350	3,652,140	4,716,500
June 1 .....	313,890	1,879,960	2,193,850	286,220	2,317,770	2,603,980
August 1 .....	39,730	1,078,960	1,118,690	54,430	1,323,400	1,377,830
October 1 <sup>2</sup> .....	(D)	(D)	83,100			
December 1 .....	2,353,240	4,750,290	7,103,530			
<b>Milled rice</b>						
March 1 .....	(X)	214,640	214,640	(X)	222,030	222,030
June 1 .....	(X)	259,640	259,640	(X)	205,020	205,020
August 1 .....	(X)	184,930	184,930	(X)	198,670	198,670
October 1 <sup>2</sup> .....	(X)	67,270	67,270			
December 1 .....	(X)	257,600	257,600			

(D) Withheld to avoid disclosing data for individual operations.

(X) Not applicable.

<sup>1</sup> Includes stocks at mills, elevators, warehouses, ports, and in transit.

<sup>2</sup> California only.

## Rice Stocks by Position – States and United States: August 1, 2009 and 2010

State	2009			2010		
	On farms	Off farms <sup>1</sup>	Total all positions	On farms	Off farms <sup>1</sup>	Total all positions
	(1,000 cwt)	(1,000 cwt)	(1,000 cwt)	(1,000 cwt)	(1,000 cwt)	(1,000 cwt)
<b>Rough rice</b>						
Arkansas .....	550	12,672	13,222	610	15,913	16,523
California .....	(D)	(D)	5,987	125	7,795	7,920
Louisiana .....	(D)	(D)	954	200	1,757	1,957
Mississippi .....	(D)	(D)	955	(D)	(D)	(D)
Missouri .....	(D)	(D)	837	(D)	(D)	(D)
Texas .....	(D)	(D)	2,708	(D)	(D)	2,387
Unallocated <sup>2</sup> .....	326	11,115		265	3,711	1,589
United States .....	876	23,787	24,663	1,200	29,176	30,376
<b>Milled rice</b>						
Arkansas .....	(X)	1,318	1,318	(X)	1,681	1,681
California .....	(X)	1,750	1,750	(X)	874	874
Louisiana .....	(X)	(D)	(D)	(X)	684	684
Mississippi .....	(X)	(D)	(D)	(X)	(D)	(D)
Missouri .....	(X)	(D)	(D)	(X)	(D)	(D)
Texas .....	(X)	(D)	(D)	(X)	785	785
Unallocated <sup>2</sup> .....	(X)	1,009	1,009	(X)	356	356
United States .....	(X)	4,077	4,077	(X)	4,380	4,380

(D) Withheld to avoid disclosing data for individual operations.

(X) Not applicable.

<sup>1</sup> Includes stocks at mills, elevators, warehouses, ports, and in transit.

<sup>2</sup> Unallocated includes State data withheld to avoid disclosure of individual operations.

**Rough Rice Stocks by Length of Grain in All Positions – States and United States:  
August 1, 2009 and 2010**

State	Long		Medium		Short		Total	
	2009	2010	2009	2010	2009	2010	2009	2010
	(1,000 cwt)	(1,000 cwt)	(1,000 cwt)	(1,000 cwt)	(1,000 cwt)	(1,000 cwt)	(1,000 cwt)	(1,000 cwt)
California .....	(D)	183	4,671	6,424	(D)	1,313	5,987	7,920
Other States <sup>1</sup> .....	(D)	19,349	1,422	3,103	(D)	4	18,676	22,456
United States .....	17,698	19,532	6,093	9,527	872	1,317	24,663	30,376

(D) Withheld to avoid disclosing data for individual operations.

<sup>1</sup> Other States include Arkansas, Louisiana, Mississippi, Missouri, and Texas.

**Milled Rice Stocks by Length of Grain in All Positions – States and United States:  
August 1, 2009 and 2010**

State	Whole kernels (head rice)							
	Long		Medium		Short		Total	
	2009	2010	2009	2010	2009	2010	2009	2010
	(1,000 cwt)	(1,000 cwt)	(1,000 cwt)	(1,000 cwt)	(1,000 cwt)	(1,000 cwt)	(1,000 cwt)	(1,000 cwt)
California .....	(D)	(D)	541	516	(D)	(D)	592	579
Other States <sup>1</sup> .....	(D)	(D)	148	283	(D)	(D)	1,806	2,791
United States .....	1,658	2,511	689	799	51	60	2,398	3,370

State	Broken kernels							
	Second heads		Screenings <sup>2</sup>		Brewers		Total	
	2009	2010	2009	2010	2009	2010	2009	2010
	(1,000 cwt)	(1,000 cwt)	(1,000 cwt)	(1,000 cwt)	(1,000 cwt)	(1,000 cwt)	(1,000 cwt)	(1,000 cwt)
California .....	1,112	253	-	-	46	42	1,158	295
Other States <sup>1</sup> .....	353	417	3	93	165	205	521	715
United States .....	1,465	670	3	93	211	247	1,679	1,010

- Represents zero.

(D) Withheld to avoid disclosing data for individual operations.

<sup>1</sup> Other States include Arkansas, Louisiana, Mississippi, Missouri, and Texas.

<sup>2</sup> Screenings included with second heads in California.

## Rice Stocks by Position – States and United States: June 1, 2009 and 2010

State	2009			2010		
	On farms	Off farms <sup>1</sup>	Total all positions	On farms	Off farms <sup>1</sup>	Total all positions
	(1,000 cwt)	(1,000 cwt)	(1,000 cwt)	(1,000 cwt)	(1,000 cwt)	(1,000 cwt)
<b>Rough rice</b>						
Arkansas .....	4,800	22,560	27,360	3,950	27,459	31,409
California .....	(D)	(D)	11,810	600	14,498	15,098
Louisiana .....	350	2,178	2,528	880	2,685	3,565
Mississippi .....	(D)	(D)	1,387	300	1,000	1,300
Missouri .....	(D)	(D)	1,937	(D)	(D)	2,327
Texas .....	(D)	(D)	3,344	(D)	(D)	3,709
Unallocated <sup>2</sup> .....	1,770	16,708		580	6,456	6,036
United States .....	6,920	41,446	48,366	6,310	51,098	57,408
<b>Milled rice</b>						
Arkansas .....	(X)	1,743	1,743	(X)	1,617	1,617
California .....	(X)	1,656	1,656	(X)	1,802	1,802
Louisiana .....	(X)	(D)	(D)	(X)	415	415
Mississippi .....	(X)	(D)	(D)	(X)	(D)	(D)
Missouri .....	(X)	(D)	(D)	(X)	(D)	(D)
Texas .....	(X)	792	792	(X)	384	384
Unallocated <sup>2</sup> .....	(X)	1,533	1,533	(X)	302	302
United States .....	(X)	5,724	5,724	(X)	4,520	4,520

(D) Withheld to avoid disclosing data for individual operations.

(X) Not applicable.

<sup>1</sup> Includes stocks at mills, elevators, warehouses, ports, and in transit.

<sup>2</sup> Unallocated includes State data withheld to avoid disclosure of individual operations.

**Rough Rice Stocks by Length of Grain in All Positions – States and United States:  
June 1, 2009 and 2010**

State	Long		Medium		Short		Total	
	2009	2010	2009	2010	2009	2010	2009	2010
	(1,000 cwt)	(1,000 cwt)	(1,000 cwt)	(1,000 cwt)	(1,000 cwt)	(1,000 cwt)	(1,000 cwt)	(1,000 cwt)
California .....	(D)	270	10,039	12,805	(D)	2,023	11,810	15,098
Other States <sup>1</sup> .....	(D)	36,771	2,733	5,539	(D)	-	36,556	42,310
United States .....	34,293	37,041	12,772	18,344	1,301	2,023	48,366	57,408

- Represents zero.

(D) Withheld to avoid disclosing data for individual operations.

<sup>1</sup> Other States include Arkansas, Louisiana, Mississippi, Missouri, and Texas.

**Milled Rice Stocks by Length of Grain in All Positions – States and United States:  
June 1, 2009 and 2010**

State	Whole kernels (head rice)							
	Long		Medium		Short		Total	
	2009	2010	2009	2010	2009	2010	2009	2010
	(1,000 cwt)	(1,000 cwt)	(1,000 cwt)	(1,000 cwt)	(1,000 cwt)	(1,000 cwt)	(1,000 cwt)	(1,000 cwt)
California .....	6	(D)	614	1,004	53	(D)	673	1,065
Other States <sup>1</sup> .....	3,245	(D)	209	184	4	(D)	3,458	2,213
United States .....	3,251	2,043	823	1,188	57	47	4,131	3,278

State	Broken kernels							
	Second heads		Screenings <sup>2</sup>		Brewers		Total	
	2009	2010	2009	2010	2009	2010	2009	2010
	(1,000 cwt)	(1,000 cwt)	(1,000 cwt)	(1,000 cwt)	(1,000 cwt)	(1,000 cwt)	(1,000 cwt)	(1,000 cwt)
California .....	(D)	(D)	-	-	(D)	(D)	983	737
Other States <sup>1</sup> .....	(D)	(D)	61	34	(D)	(D)	610	505
United States .....	828	961	61	34	704	247	1,593	1,242

- Represents zero.

(D) Withheld to avoid disclosing data for individual operations.

<sup>1</sup> Other States include Arkansas, Louisiana, Mississippi, Missouri, and Texas.

<sup>2</sup> Screenings included with second heads in California.

## Statistical Methodology

**Survey Procedures:** The rice stocks estimates in this report are based on surveys conducted during the first two weeks of August. Separate surveys were conducted to obtain the on-farm and off-farm estimates. The on-farm stocks survey is a probability survey based on a sampling procedure that ensures all operations storing rice in the United States have a chance to be selected. These producers were asked to provide the total quantities of grain stored on their operations as of August 1, 2010 regardless of ownership. Off-farm stocks are a census of all known rice storage facilities. An effort is made to obtain reports from all off-farm facilities. Estimates are made for missing facilities to assure complete coverage.

**Estimating Procedures:** On-farm and off-farm survey data are reviewed at the State and national levels for reasonableness, consistency with historical estimates, and current crop size. After estimates are made for on-farm and off-farm rice stocks, the total of these two are combined and evaluated using the balance sheet approach. This method utilizes other sources of data to check the reasonableness of the stocks estimates. Estimates of production, exports, and millings are reviewed to make sure beginning stocks, production, utilization, and ending stocks are within reasonable balance and present the best possible estimate of stocks.

**Revision Policy:** On-farm and off-farm stocks are subject to revision in the quarter following initial publication and again in the following December 1 *Rice Stocks* report published in January each year. Revisions can be made when late reports are received, errors are detected in reporting and calculating, and when production estimates are revised. Estimates will also be reviewed after data from the 5-year Census of Agriculture are available. No revisions to these years will be made after that date.

**Reliability:** Reliability of the on-farm and off-farm stocks must be treated separately because the survey designs for the two surveys are drastically different. The on-farm stocks estimates are subject to sampling variability because all operations holding on-farm stocks are not included in the sample.

Survey indications are also subject to non-sampling errors such as omission, duplication, imputation for missing data, and mistakes in reporting, recording, and processing the data. Off-farm, as well as on-farm stocks, are subject to these types of errors. These errors cannot be measured directly, but they are minimized through rigid quality controls in the data collection process and a careful review of all reported data for consistency and reasonableness.

## Information Contacts

Listed below are the commodity statisticians in the Crops Branch of the National Agricultural Statistics Service to contact for additional information. E-mail inquiries may be sent to [nass@nass.usda.gov](mailto:nass@nass.usda.gov)

Lance Honig, Chief, Crops Branch.....	(202) 720-2127
Jacqueline Moore, Head, Field Crops Section.....	(202) 720-2127
Suzanne Avilla – Peanuts, Rice .....	(202) 720-7688
Shiela Corley – Cotton, Cotton Ginnings, Sorghum.....	(202) 720-5944
Bryan Durham – Hay, Oats.....	(202) 690-3234
Anthony Prillaman – Corn, Proso Millet, Flaxseed .....	(202) 720-9526
Nick Schauer – Wheat, Rye .....	(202) 720-8068
Julie Schmidt – Crop Weather, Barley, Sugar Crops.....	(202) 720-7621
Travis Thorson – Soybeans, Sunflower, Other Oilseeds .....	(202) 720-7369

## Access to NASS Reports

For your convenience, you may access NASS reports and products the following ways:

- All reports are available electronically, at no cost, on the NASS web site: <http://www.nass.usda.gov>
- Both national and state specific reports are available via a free e-mail subscription. To set-up this free subscription, visit <http://www.nass.usda.gov> and in the “Receive NASS Updates” box under “Receive reports by Email,” click on “National” or “State” to select the reports you would like to receive.
- Printed reports may be purchased from the National Technical Information Service (NTIS) by calling toll-free (800) 999-6779, or (703) 605-6220 if calling from outside the United States or Canada. Accepted methods of payment are Visa, MasterCard, check, or money order.

For more information on NASS surveys and reports, call the NASS Agricultural Statistics Hotline at (800) 727-9540, 7:30 a.m. to 4:00 p.m. ET, or e-mail: [nass@nass.usda.gov](mailto:nass@nass.usda.gov).

The United States Department of Agriculture (USDA) prohibits discrimination in all its programs and activities on the basis of race, color, national origin, age, disability, and where applicable, sex, marital status, familial status, parental status, religion, sexual orientation, genetic information, political beliefs, reprisal, or because all or a part of an individual's income is derived from any public assistance program. (Not all prohibited bases apply to all programs.) Persons with disabilities who require alternative means for communication of program information (Braille, large print, audiotape, etc.) should contact USDA's TARGET Center at (202) 720-2600 (voice and TDD).

To file a complaint of discrimination, write to USDA, Director, Office of Civil Rights, 1400 Independence Avenue, S.W., Washington, D.C. 20250-9410, or call (800) 795-3272 (voice) or (202) 720-6382 (TDD). USDA is an equal opportunity provider and employer.