

Quarterly Hogs and Pigs

Released June 25, 2010, by the National Agricultural Statistics Service (NASS), Agricultural Statistics Board, U.S. Department of Agriculture. For information on *Quarterly Hogs and Pigs* call Nick Streff at 202-720-3106, office hours 7:30 a.m. to 4:00 p.m. ET.

U.S. Hog Inventory down 4 Percent

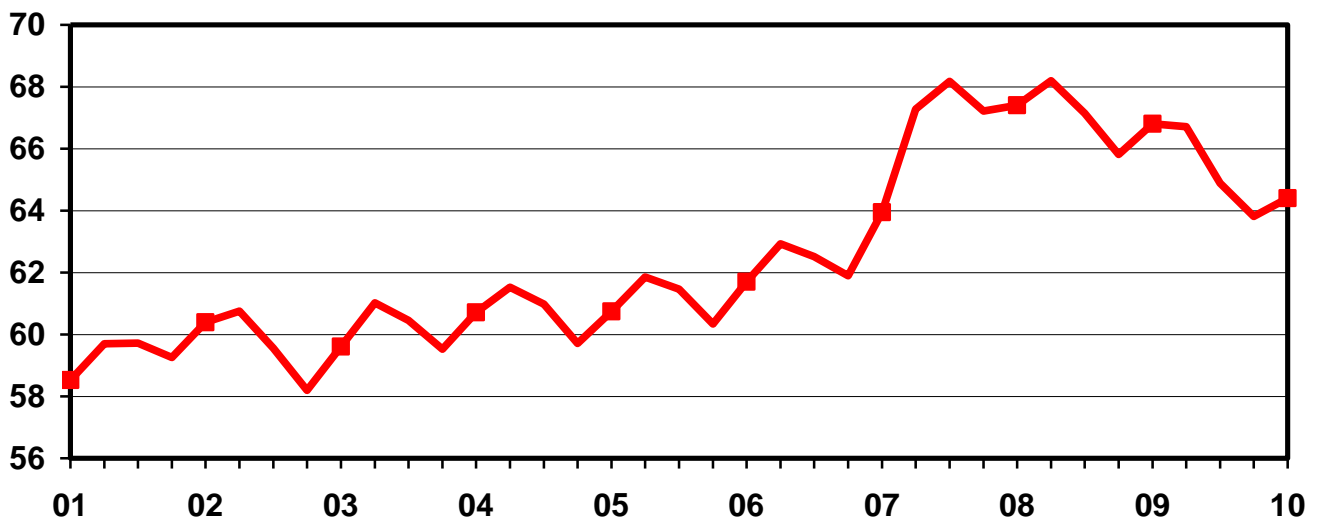
U.S. inventory of all hogs and pigs on June 1, 2010 was 64.4 million head. This was down 4 percent from June 1, 2009 but up 1 percent from March 1, 2010.

Breeding inventory, at 5.79 million head, was down 3 percent from last year but up slightly from the previous quarter. **Market hog inventory**, at 58.6 million head, was down 4 percent from last year but up 1 percent from last quarter.

The March-May 2010 pig crop, at 28.2 million head, was down 3 percent from 2009 and down 2 percent from 2008. Sows farrowing during this period totaled 2.87 million head, down 5 percent from 2009 and down 6 percent from 2008. The sows farrowed during this quarter represented 50 percent of the breeding herd. The average pigs saved per litter was a record high 9.81 for the March-May 2010 period, compared to 9.61 last year. Pigs saved per litter by size of operation ranged from 7.70 for operations with 1-99 hogs and pigs to 9.90 for operations with more than 5,000 hogs and pigs.

U.S. Quarterly Hogs and Pigs Inventory June 1

Million Head



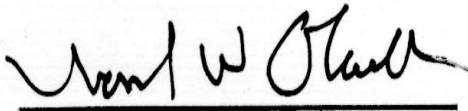
U.S. hog producers intend to have 2.89 million sows farrow during the June-August 2010 quarter, down 2 percent from the actual farrowings during the same period in 2009 and down 6 percent from 2008. Intended farrowings for September-November 2010, at 2.90 million sows, are down 1 percent from 2009 and down 4 percent from 2008.

The total number of hogs under contract owned by operations with over 5,000 head, but raised by contractees, accounted for 44 percent of the total U.S. hog inventory, down from 46 percent last year.

Revisions

All inventory and pig crop estimates for June 2009 through March 2010 were reviewed using slaughter, death loss and current import and export data. Based on this review, adjustments of less than one percent were made to the December 2009 total inventory and March 2010 total inventory. An adjustment of two percent was made to the September-November 2009 pig crop.

This report was approved on June 25, 2010.



Acting Secretary of
Agriculture
Joseph W. Glauber



Agricultural Statistics Board
Chairperson
Hubert Hamer

Contents

Page

Quarterly U.S. Inventory by Class and Weight Group, 2009-2010	1
Quarterly U.S. Sows Farrowed, Pig Crop, and Pigs per Litter, 2008-2010	2
Quarterly U.S. Pigs per Litter by Size of Operation, 2009-2010	2
Hogs and Pigs: Inventory by State and U.S., 2008-2010	
March 1	5
June 1	7
September 1	9
December 1	11
Farrowings: Number of Sows, Pigs per Litter, Pig Crop by State and U.S.; 2008-2010	
December-February	13
March-May	14
June-August	15
September-November	16
Monthly U.S. Farrowings, December-November 2009-2010	17
Reliability Statement	18
Information Contacts	19

**Hogs and Pigs: Inventory Number by Class, Weight Group,
and Quarter, United States, 2009-2010**

Item	2009	2010	2010 as a % 2009
	<i>1,000 Head</i>	<i>1,000 Head</i>	<i>Percent</i>
March 1 Inventory ¹			
All Hogs and Pigs	65,819	63,818	97
Kept for Breeding	5,992	5,760	96
Market	59,828	58,058	97
Market Hogs and Pigs by Weight Groups			
Under 50 Pounds	19,809	19,017	96
50-119 Pounds	16,426	15,993	97
120-179 Pounds	12,732	12,307	97
180 Pounds and Over	10,862	10,742	99
June 1 Inventory ¹			
All Hogs and Pigs	66,809	64,400	96
Kept for Breeding	5,968	5,788	97
Market	60,842	58,612	96
Market Hogs and Pigs by Weight Groups			
Under 50 Pounds	19,554	18,879	97
50-119 Pounds	17,838	16,877	95
120-179 Pounds	12,604	12,279	97
180 Pounds and Over	10,847	10,578	98
September 1 Inventory ¹			
All Hogs and Pigs	66,716		
Kept for Breeding	5,875		
Market	60,842		
Market Hogs and Pigs by Weight Groups			
Under 50 Pounds	19,758		
50-119 Pounds	17,148		
120-179 Pounds	12,684		
180 Pounds and Over	11,253		
December 1 Inventory ¹			
All Hogs and Pigs	64,887		
Kept for Breeding	5,850		
Market	59,037		
Market Hogs and Pigs by Weight Groups			
Under 50 Pounds	18,705		
50-119 Pounds	16,782		
120-179 Pounds	12,299		
180 Pounds and Over	11,252		

¹ May not add due to rounding.

**Farrowings: Number of Sows, Pig Crop, and Pigs per Litter,
United States, 2008-2010**

Item	2008	2009	2010	2010 as % of	
				2008	2009
	<i>1,000 Head</i>	<i>1,000 Head</i>	<i>1,000 Head</i>	<i>Percent</i>	<i>Percent</i>
Sows Farrowing					
Dec-Feb ¹	3,071	3,011	2,901	94	96
Mar-May	3,052	3,018	2,875	94	95
Dec-May ^{1 2}	6,123	6,029	5,776	94	96
Jun-Aug ³	3,075	2,959	2,890	94	98
Sep-Nov ³	3,028	2,915	2,899	96	99
Jun-Nov ^{2 3}	6,103	5,874	5,790	95	99
Pig Crop					
Dec-Feb ¹	28,388	28,552	27,873	98	98
Mar-May	28,631	29,012	28,199	98	97
Dec-May ^{1 2}	57,019	57,564	56,072	98	97
Jun-Aug	29,240	28,718			
Sep-Nov	28,771	28,260			
Jun-Nov ²	58,011	56,978			
	<i>Number</i>	<i>Number</i>	<i>Number</i>	<i>Percent</i>	<i>Percent</i>
Pigs per Litter					
Dec-Feb ¹	9.24	9.48	9.61	104	101
Mar-May	9.38	9.61	9.81	105	102
Dec-May ¹	9.31	9.55	9.71	104	102
Jun-Aug	9.51	9.70			
Sep-Nov	9.50	9.70			
Jun-Nov	9.51	9.70			

¹ December preceding year.

² May not add due to rounding.

³ Intentions for 2010.

Pigs per Litter: By Size of Operation, United States, 2009-2010

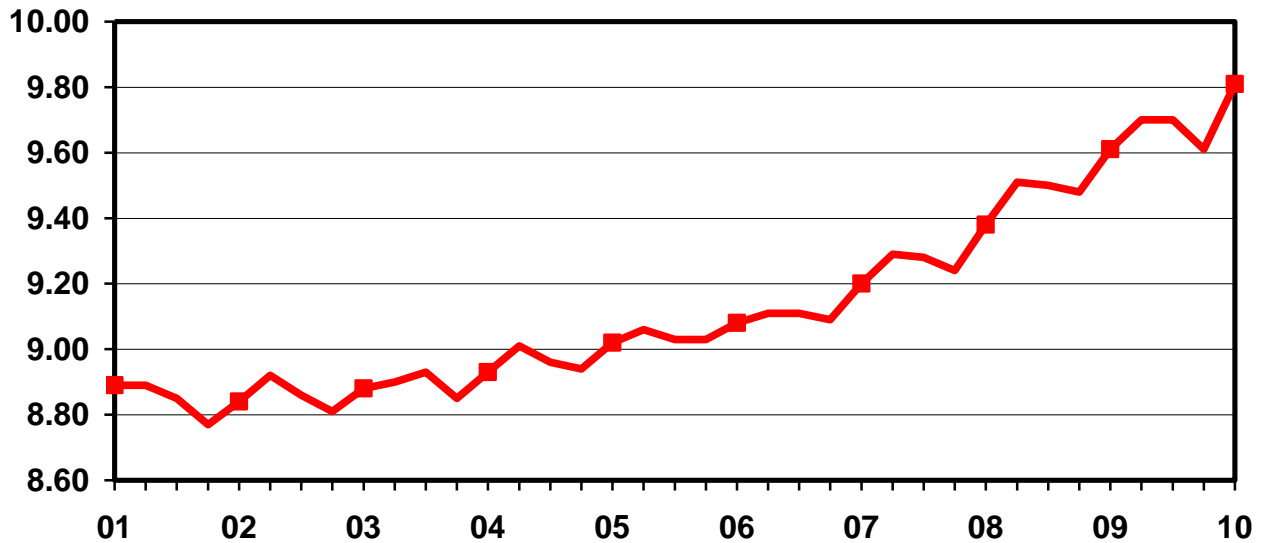
Pig Crop	Pigs per Litter on Operations Having ¹					
	1-99 Head	100-499 Head	500-999 Head	1,000-1,999 Head	2,000-4,999 Head	5,000+ Head
	<i>Number</i>	<i>Number</i>	<i>Number</i>	<i>Number</i>	<i>Number</i>	<i>Number</i>
2009						
Dec-Feb ²	7.30	8.10	8.40	9.00	9.40	9.50
Mar-May	7.40	8.10	8.50	9.10	9.60	9.70
Jun-Aug	7.40	8.20	8.60	9.10	9.60	9.80
Sep-Nov	7.40	8.10	8.50	9.20	9.60	9.80
2010						
Dec-Feb ²	7.40	8.10	8.50	9.20	9.60	9.70
Mar-May	7.70	8.40	8.60	9.40	9.70	9.90
Jun-Aug						
Sep-Nov						

¹ Pigs per litter rounded to the nearest tenth.

² December preceding year.

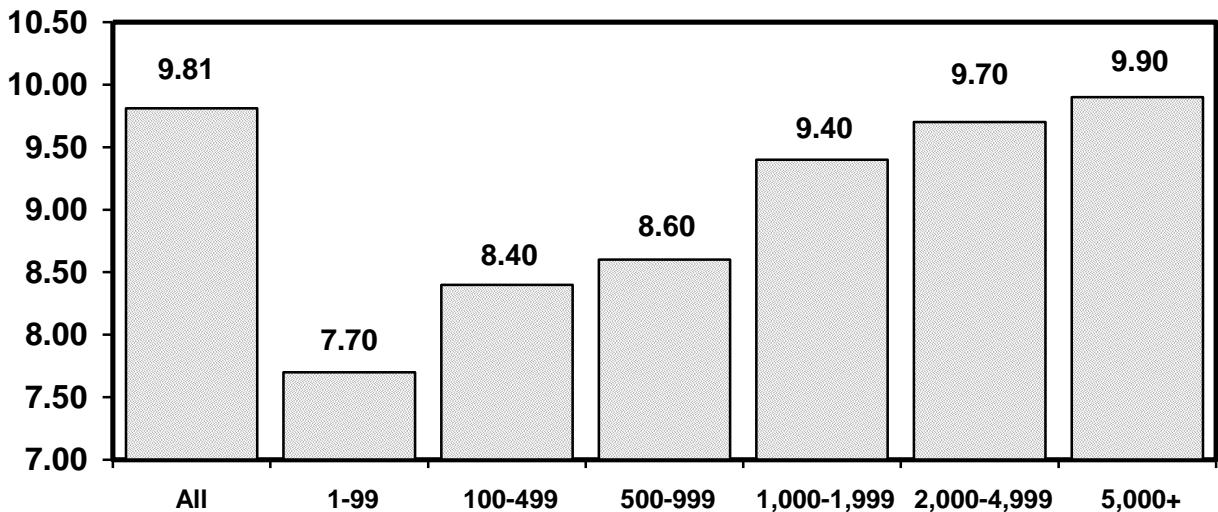
U.S. Quarterly Litter Rate March-May

Number Head



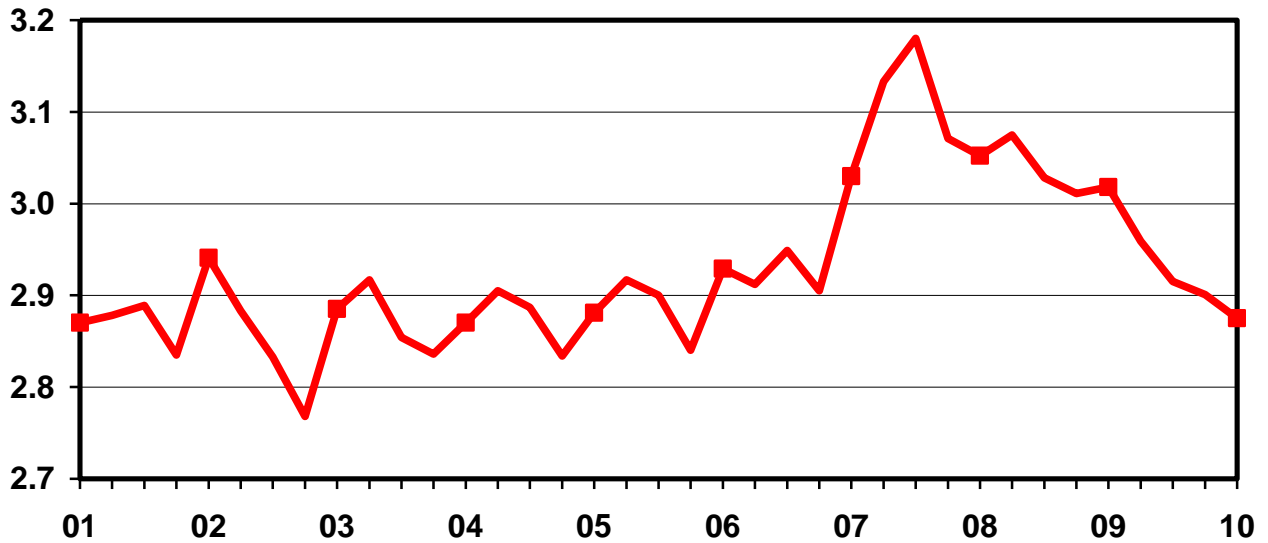
U.S. Pigs per Litter By Size of Operation, March-May 2010

Number Head



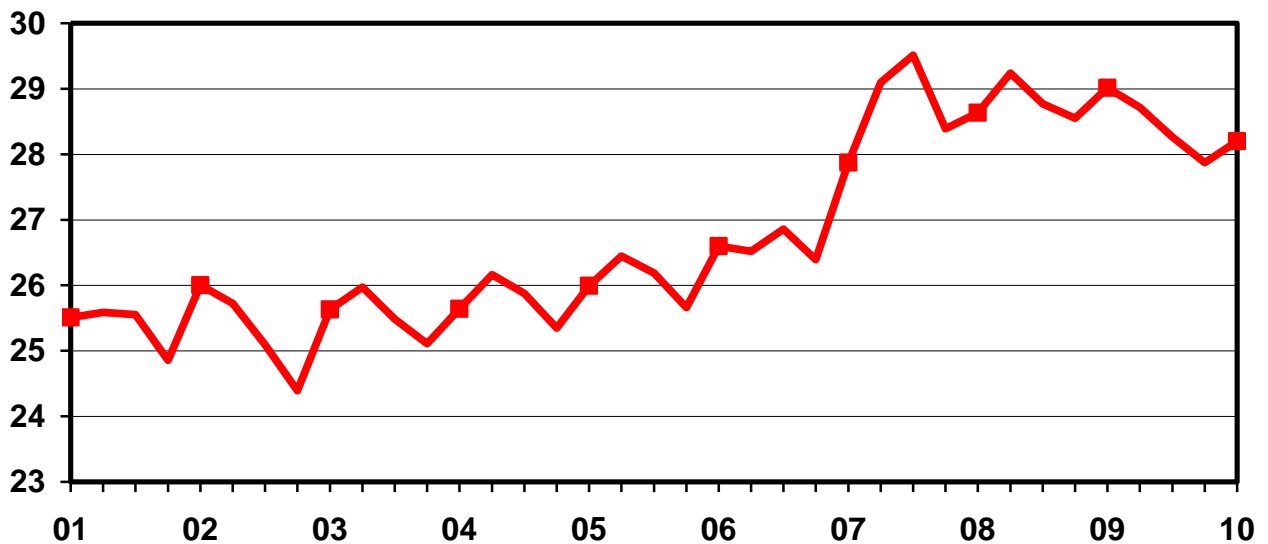
U.S. Quarterly Sows Farrowed March-May

Million Head



U.S. Quarterly Pig Crop March-May

Million Head



**Hogs and Pigs: Breeding, Market, and Total Inventory
by State and United States, March 1, 2009-2010**

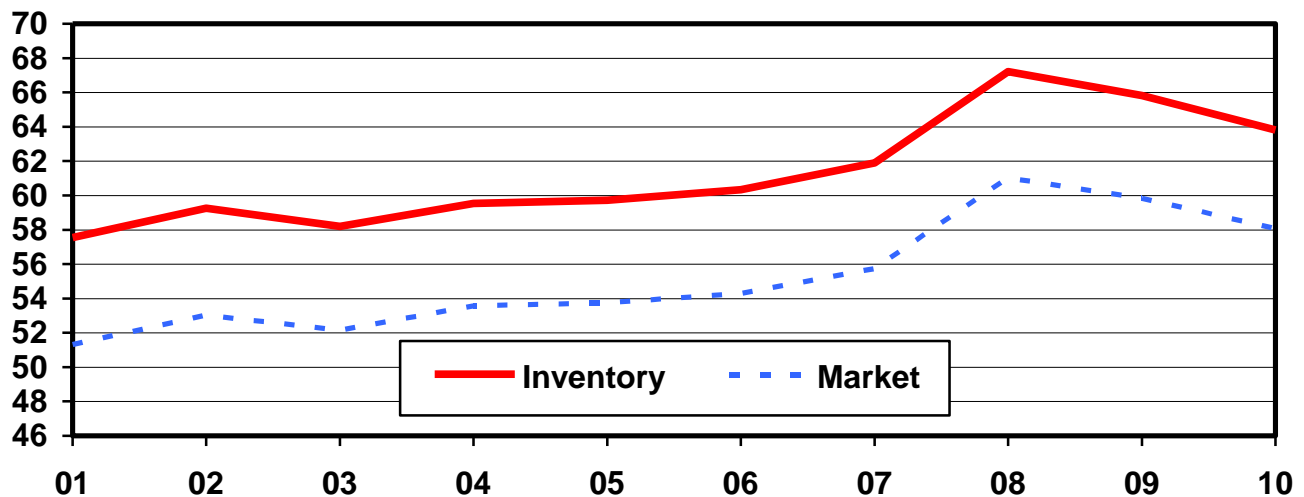
State	Breeding			Market			Total		
	2009	2010		2009	2010		2009	2010	
		Number	as % of 2009		Number	as % of 2009		Number	as % of 2009
	<i>1,000 Head</i>	<i>1,000 Head</i>	<i>Percent</i>	<i>1,000 Head</i>	<i>1,000 Head</i>	<i>Percent</i>	<i>1,000 Head</i>	<i>1,000 Head</i>	<i>Percent</i>
CO	150	150	100	590	580	98	740	730	99
IL	480	480	100	3,820	3,870	101	4,300	4,350	101
IN	270	290	107	3,280	3,260	99	3,550	3,550	100
IA	1,040	1,010	97	18,460	17,790	96	19,500	18,800	96
KS	165	180	109	1,655	1,620	98	1,820	1,800	99
MI	110	110	100	930	960	103	1,040	1,070	103
MN	580	550	95	6,820	6,650	98	7,400	7,200	97
MO	365	355	97	2,585	2,645	102	2,950	3,000	102
NE	385	365	95	2,815	2,635	94	3,200	3,000	94
NC	980	880	90	8,420	8,220	98	9,400	9,100	97
OH	170	170	100	1,810	1,870	103	1,980	2,040	103
OK	400	410	103	1,940	1,870	96	2,340	2,280	97
PA	90	95	106	1,020	1,025	100	1,110	1,120	101
SD	150	150	100	1,160	1,030	89	1,310	1,180	90
TX	95	55	58	995	595	60	1,090	650	60
UT	75	75	100	625	625	100	700	700	100
Oth Sts ¹	487	435	89	2,903	2,813	97	3,389	3,248	96
US ²	5,992	5,760	96	59,828	58,058	97	65,819	63,818	97

¹ Individual State estimates not available for the 34 Other States.

² May not add due to rounding.

U.S. Hog Inventory & Market Hogs March 1

Million Head



**Market Hogs and Pigs: Inventory Number by Weight Group,
State, and United States, March 1, 2009-2010**

State	Under 50 Lbs.		50-119 Lbs.		120-179 Lbs.		180 Lbs. and Over	
	2009	2010	2009	2010	2009	2010	2009	2010
	<i>1,000 Head</i>	<i>1,000 Head</i>	<i>1,000 Head</i>	<i>1,000 Head</i>	<i>1,000 Head</i>	<i>1,000 Head</i>	<i>1,000 Head</i>	<i>1,000 Head</i>
CO	290	270	105	115	70	80	125	115
IL	1,350	1,240	1,100	1,170	770	770	600	690
IN	1,140	1,140	940	900	620	620	580	600
IA	4,840	4,540	5,560	5,460	4,690	4,440	3,370	3,350
KS	520	490	320	325	290	270	525	535
MI	315	320	265	250	160	185	190	205
MN	2,460	2,320	1,930	2,010	1,390	1,330	1,040	990
MO	1,135	1,180	585	590	465	465	400	410
NE	960	900	820	800	610	560	425	375
NC	3,080	3,050	2,160	1,950	1,710	1,720	1,470	1,500
OH	650	680	500	545	390	405	270	240
OK	810	810	420	360	210	220	500	480
PA	320	295	305	320	200	200	195	210
SD	410	350	290	260	245	215	215	205
TX	280	145	230	150	200	140	285	160
UT	250	260	145	130	120	120	110	115
Oth Sts ¹	999	1,027	751	658	592	567	562	562
US ²	19,809	19,017	16,426	15,993	12,732	12,307	10,862	10,742

¹ Individual State estimates not available for the 34 Other States.

² Weight groups may not add to Market Hogs and Pigs due to rounding.

**Hogs and Pigs: Breeding, Market, and Total Inventory
by State and United States, June 1, 2009-2010**

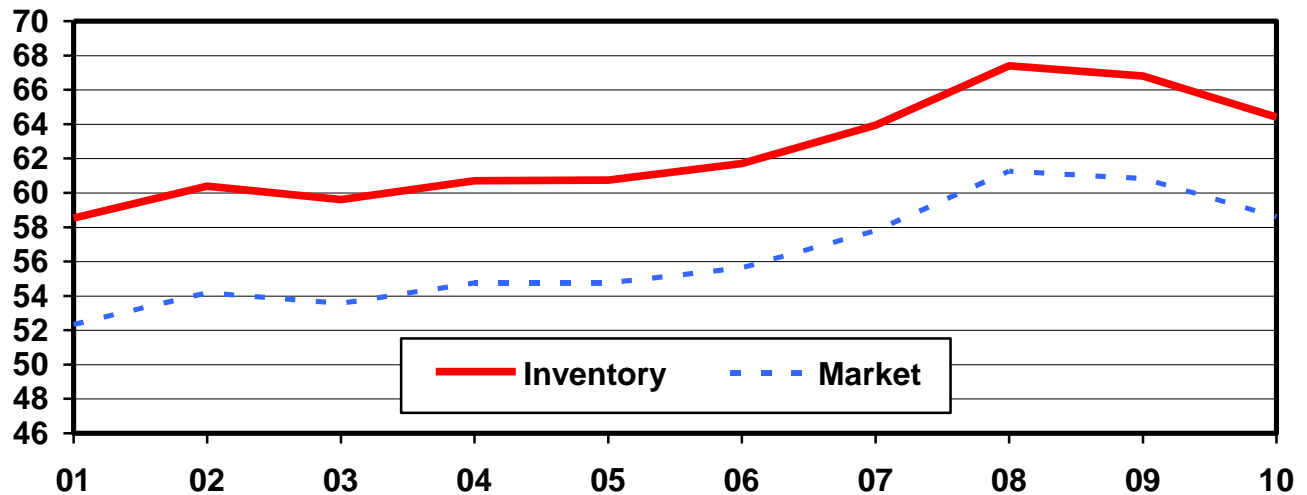
State	Breeding			Market			Total		
	2009	2010		2009	2010		2009	2010	
		Number	as % of 2009		Number	as % of 2009		Number	as % of 2009
	<i>1,000 Head</i>	<i>1,000 Head</i>	<i>Percent</i>	<i>1,000 Head</i>	<i>1,000 Head</i>	<i>Percent</i>	<i>1,000 Head</i>	<i>1,000 Head</i>	<i>Percent</i>
CO	150	150	100	590	590	100	740	740	100
IL	480	490	102	3,870	3,910	101	4,350	4,400	101
IN	270	290	107	3,330	3,310	99	3,600	3,600	100
IA	1,020	1,010	99	18,780	17,890	95	19,800	18,900	95
KS	170	185	109	1,620	1,605	99	1,790	1,790	100
MI	110	110	100	950	950	100	1,060	1,060	100
MN	580	550	95	6,920	6,950	100	7,500	7,500	100
MO	345	350	101	2,705	2,650	98	3,050	3,000	98
NE	390	370	95	2,910	2,730	94	3,300	3,100	94
NC	990	880	89	8,710	8,020	92	9,700	8,900	92
OH	170	165	97	1,840	1,925	105	2,010	2,090	104
OK	400	410	103	1,890	1,910	101	2,290	2,320	101
PA	90	100	111	1,060	1,050	99	1,150	1,150	100
SD	155	160	103	1,135	1,040	92	1,290	1,200	93
TX	95	55	58	925	605	65	1,020	660	65
UT	75	80	107	645	650	101	720	730	101
Oth Sts ¹	478	433	91	2,962	2,827	95	3,439	3,260	95
US ²	5,968	5,788	97	60,842	58,612	96	66,809	64,400	96

¹ Individual State estimates not available for the 34 Other States.

² May not add due to rounding.

U.S. Hog Inventory & Market Hogs June 1

Million Head



**Market Hogs and Pigs: Inventory Number by Weight Group,
State, and United States, June 1, 2009-2010**

State	Under 50 Lbs.		50-119 Lbs.		120-179 Lbs.		180 Lbs. and Over	
	2009	2010	2009	2010	2009	2010	2009	2010
	<i>1,000 Head</i>	<i>1,000 Head</i>	<i>1,000 Head</i>	<i>1,000 Head</i>	<i>1,000 Head</i>	<i>1,000 Head</i>	<i>1,000 Head</i>	<i>1,000 Head</i>
CO	280	280	125	100	70	85	115	125
IL	1,220	1,180	1,220	1,230	790	800	640	700
IN	1,100	1,060	1,040	1,000	630	630	560	620
IA	4,850	4,490	5,980	5,710	4,530	4,440	3,420	3,250
KS	465	495	380	400	285	230	490	480
MI	325	300	285	270	160	190	180	190
MN	2,370	2,360	2,140	2,150	1,380	1,420	1,030	1,020
MO	1,205	1,135	630	615	455	465	415	435
NE	980	910	880	870	630	550	420	400
NC	3,090	3,070	2,350	1,940	1,740	1,600	1,530	1,410
OH	640	700	535	565	395	410	270	250
OK	770	790	400	420	210	230	510	470
PA	320	295	350	360	205	195	185	200
SD	390	360	305	305	225	200	215	175
TX	265	150	255	135	205	140	200	180
UT	250	280	155	135	120	120	120	115
Oth Sts ¹	1,034	1,024	808	672	574	574	547	558
US ²	19,554	18,879	17,838	16,877	12,604	12,279	10,847	10,578

¹ Individual State estimates not available for the 34 Other States.

² Weight groups may not add to Market Hogs and Pigs due to rounding.

**Hogs and Pigs: Breeding, Market, and Total Inventory
by State and United States, September 1, 2008-2009**

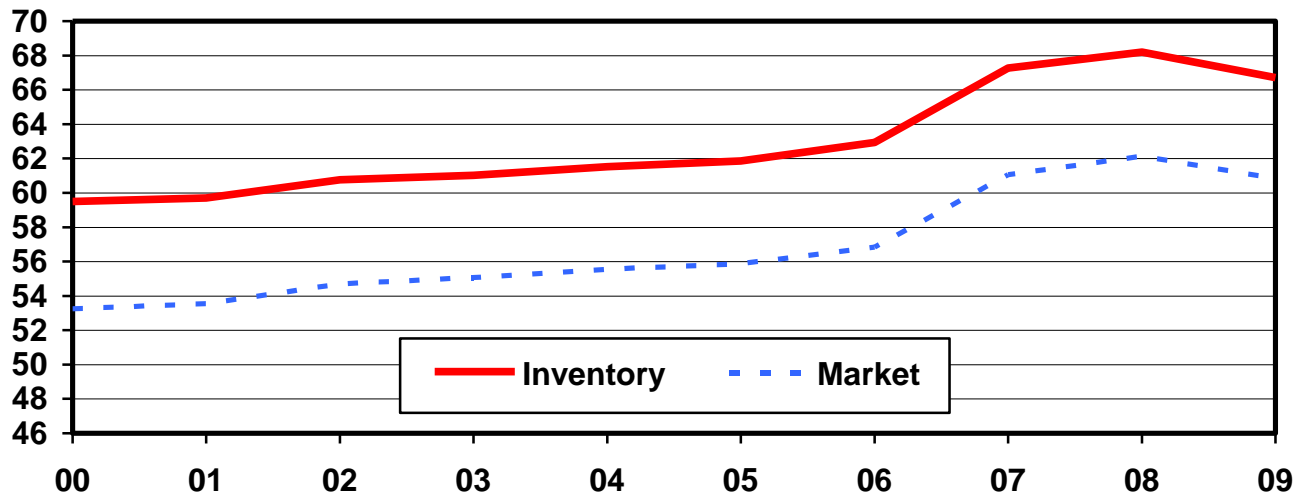
State	Breeding			Market			Total		
	2008	2009		2008	2009		2008	2009	
		Number	as % of 2008		Number	as % of 2008		Number	as % of 2008
	<i>1,000 Head</i>	<i>1,000 Head</i>	<i>Percent</i>	<i>1,000 Head</i>	<i>1,000 Head</i>	<i>Percent</i>	<i>1,000 Head</i>	<i>1,000 Head</i>	<i>Percent</i>
CO	150	150	100	600	580	97	750	730	97
IL	470	470	100	3,930	3,780	96	4,400	4,250	97
IN	280	280	100	3,320	3,320	100	3,600	3,600	100
IA	1,070	1,010	94	18,730	18,690	100	19,800	19,700	99
KS	170	160	94	1,640	1,600	98	1,810	1,760	97
MI	100	110	110	950	950	100	1,050	1,060	101
MN	570	560	98	7,030	6,740	96	7,600	7,300	96
MO	375	350	93	2,775	2,700	97	3,150	3,050	97
NE	375	380	101	2,925	2,920	100	3,300	3,300	100
NC	1,000	980	98	9,300	9,020	97	10,300	10,000	97
OH	165	160	97	1,755	1,890	108	1,920	2,050	107
OK	400	410	103	2,060	1,950	95	2,460	2,360	96
PA	85	90	106	1,035	1,030	100	1,120	1,120	100
SD	150	150	100	1,210	1,130	93	1,360	1,280	94
TX	105	70	67	1,015	930	92	1,120	1,000	89
UT	85	80	94	715	680	95	800	760	95
Oth Sts ¹	511	465	91	3,145	2,932	93	3,656	3,396	93
US ²	6,061	5,875	97	62,135	60,842	98	68,196	66,716	98

¹ Individual State estimates not available for the 34 Other States.

² May not add due to rounding.

U.S. Hog Inventory & Market Hogs September 1

Million Head



**Market Hogs and Pigs: Inventory Number by Weight Group,
State, and United States, September 1, 2008-2009**

State	Under 50 Lbs.		50-119 Lbs.		120-179 Lbs.		180 Lbs. and Over	
	2008	2009	2008	2009	2008	2009	2008	2009
	<i>1,000 Head</i>	<i>1,000 Head</i>	<i>1,000 Head</i>	<i>1,000 Head</i>	<i>1,000 Head</i>	<i>1,000 Head</i>	<i>1,000 Head</i>	<i>1,000 Head</i>
CO	280	285	135	120	70	55	115	120
IL	1,290	1,240	1,140	1,130	840	770	660	640
IN	1,090	1,140	1,000	970	620	600	610	610
IA	5,110	4,840	5,680	5,760	4,460	4,600	3,480	3,490
KS	520	505	350	330	275	290	495	475
MI	325	330	270	265	185	160	170	195
MN	2,570	2,420	2,070	2,010	1,400	1,280	990	1,030
MO	1,230	1,150	685	635	495	470	365	445
NE	990	960	880	860	610	650	445	450
NC	3,370	3,200	2,380	2,390	1,860	1,790	1,690	1,640
OH	595	675	515	540	400	410	245	265
OK	890	830	410	380	240	250	520	490
PA	290	285	335	310	215	210	195	225
SD	415	370	325	300	240	230	230	230
TX	295	260	280	230	205	200	235	240
UT	270	265	170	155	145	130	130	130
Oth Sts ¹	1,113	1,003	812	763	595	589	626	578
US ²	20,643	19,758	17,437	17,148	12,855	12,684	11,201	11,253

¹ Individual State estimates not available for the 34 Other States.

² Weight groups may not add to Market Hogs and Pigs due to rounding.

**Hogs and Pigs: Breeding, Market, and Total Inventory
by State and United States, December 1, 2008-2009**

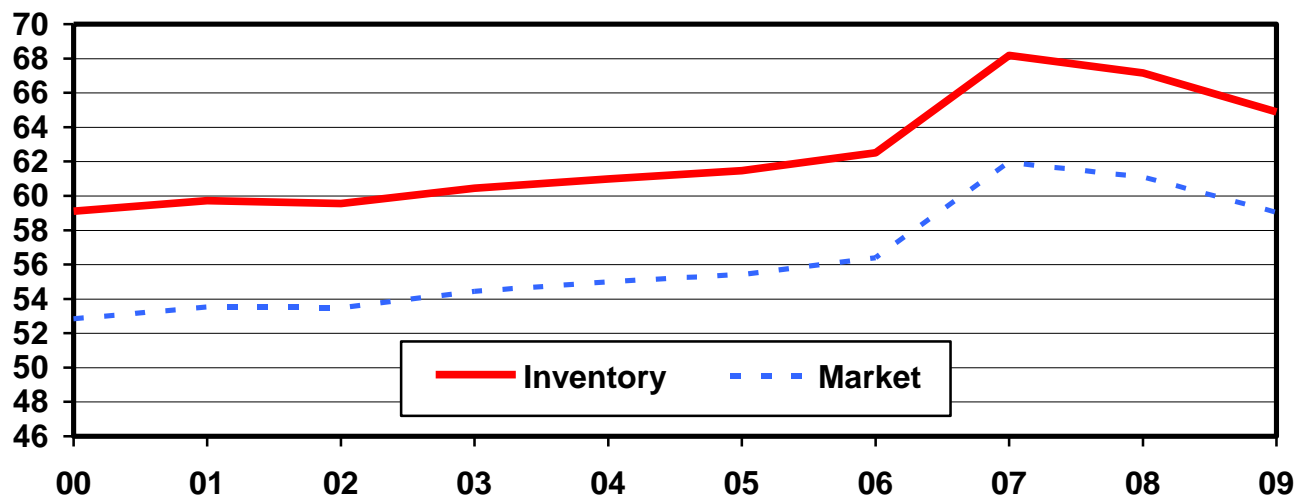
State	Breeding			Market			Total		
	2008	2009		2008	2009		2008	2009	
		Number	as % of 2008		Number	as % of 2008		Number	as % of 2008
	<i>1,000 Head</i>	<i>1,000 Head</i>	<i>Percent</i>	<i>1,000 Head</i>	<i>1,000 Head</i>	<i>Percent</i>	<i>1,000 Head</i>	<i>1,000 Head</i>	<i>Percent</i>
CO	150	150	100	580	560	97	730	710	97
IL	490	480	98	3,860	3,770	98	4,350	4,250	98
IN	280	280	100	3,270	3,320	102	3,550	3,600	101
IA	1,070	1,020	95	18,830	17,980	95	19,900	19,000	95
KS	165	180	109	1,575	1,630	103	1,740	1,810	104
MI	110	110	100	920	970	105	1,030	1,080	105
MN	580	560	97	6,920	6,640	96	7,500	7,200	96
MO	370	360	97	2,780	2,740	99	3,150	3,100	98
NE	380	370	97	2,970	2,730	92	3,350	3,100	93
NC	980	930	95	8,720	8,670	99	9,700	9,600	99
OH	170	165	97	1,770	1,845	104	1,940	2,010	104
OK	400	410	103	2,000	1,880	94	2,400	2,290	95
PA	90	100	111	1,030	1,040	101	1,120	1,140	102
SD	155	145	94	1,125	1,045	93	1,280	1,190	93
TX	100	60	60	1,020	700	69	1,120	760	68
UT	75	75	100	665	655	98	740	730	99
Oth Sts ¹	497	455	92	3,052	2,862	94	3,548	3,317	93
US ²	6,062	5,850	97	61,087	59,037	97	67,148	64,887	97

¹ Individual State estimates not available for the 34 Other States.

² May not add due to rounding.

U.S. Hog Inventory & Market Hogs December 1

Million Head



**Market Hogs and Pigs: Inventory Number by Weight Group,
State, and United States, December 1, 2008-2009**

State	Under 50 Lbs.		50-119 Lbs.		120-179 Lbs.		180 Lbs. and Over	
	2008	2009	2008	2009	2008	2009	2008	2009
	<i>1,000 Head</i>	<i>1,000 Head</i>	<i>1,000 Head</i>	<i>1,000 Head</i>	<i>1,000 Head</i>	<i>1,000 Head</i>	<i>1,000 Head</i>	<i>1,000 Head</i>
CO	285	270	100	115	70	50	125	125
IL	1,270	1,200	1,140	1,150	800	730	650	690
IN	1,090	1,080	960	970	610	640	610	630
IA	4,730	4,430	5,880	5,700	4,500	4,430	3,720	3,420
KS	475	480	360	335	245	295	495	520
MI	290	335	270	270	175	165	185	200
MN	2,420	2,350	2,050	2,010	1,360	1,230	1,090	1,050
MO	1,200	1,160	700	655	490	465	390	460
NE	1,010	880	880	850	630	600	450	400
NC	3,020	3,090	2,290	2,200	1,770	1,760	1,640	1,620
OH	600	635	515	540	400	395	255	275
OK	830	780	420	380	260	240	490	480
PA	285	280	335	330	215	220	195	210
SD	390	335	270	280	240	220	225	210
TX	285	145	235	160	205	160	295	235
UT	235	260	170	135	140	130	120	130
Oth Sts ¹	1,013	995	821	702	621	569	598	597
US ²	19,428	18,705	17,396	16,782	12,731	12,299	11,533	11,252

¹ Individual State estimates not available for the 34 Other States.

² Weight groups may not add to Market Hogs and Pigs due to rounding.

**Farrowings: Number of Sows, Pigs per Litter, and Pig Crop
by State and United States, December-February 2009-2010**

State	Sows Farrowing ¹			Pigs per Litter ¹		Pig Crop ^{1 2}		
	2009	2010		2009	2010	2009	2010	
		Number	as % of 2009				Number	as % of 2009
	<i>1,000 Head</i>	<i>1,000 Head</i>	<i>Percent</i>	<i>Number</i>	<i>Number</i>	<i>1,000 Head</i>	<i>1,000 Head</i>	<i>Percent</i>
CO	75	71	95	8.60	9.60	645	682	106
IL	250	265	106	9.50	9.40	2,375	2,491	105
IN	140	140	100	9.30	9.40	1,302	1,316	101
IA	500	475	95	9.60	9.75	4,800	4,631	96
KS	81	83	102	9.10	9.35	737	776	105
MI	53	54	102	9.70	9.80	514	529	103
MN	285	270	95	9.75	9.90	2,779	2,673	96
MO	190	195	103	9.35	9.50	1,777	1,853	104
NE	185	175	95	9.75	10.00	1,804	1,750	97
NC	530	490	92	9.55	9.50	5,062	4,655	92
OH	88	90	102	9.40	9.35	827	842	102
OK	190	190	100	8.90	9.45	1,691	1,796	106
PA	40	47	118	9.75	9.70	390	456	117
SD	83	79	95	9.85	10.20	818	806	99
TX	46	31	67	9.65	8.70	444	270	61
UT	42	40	95	9.70	9.80	407	392	96
Oth Sts ³	233	206	88	9.36	9.50	2,180	1,955	90
US ⁴	3,011	2,901	96	9.48	9.61	28,552	27,873	98

¹ December preceding year.

² Number of pigs born December-February that were still on hand March 1, or had been sold.

³ Individual State estimates not available for the 34 Other States.

⁴ May not add due to rounding.

**Farrowings: Number of Sows, Pigs per Litter, and Pig Crop
by State and United States, March-May 2009-2010**

State	Sows Farrowing			Pigs per Litter		Pig Crop ¹		
	2009	2010		2009	2010	2009	2010	
		Number	as % of 2009				Number	as % of 2009
	<i>1,000 Head</i>	<i>1,000 Head</i>	<i>Percent</i>	<i>Number</i>	<i>Number</i>	<i>1,000 Head</i>	<i>1,000 Head</i>	<i>Percent</i>
CO	72	71	99	9.00	9.90	648	703	108
IL	250	265	106	9.50	9.50	2,375	2,518	106
IN	135	140	104	9.40	9.60	1,269	1,344	106
IA	495	460	93	9.65	9.95	4,777	4,577	96
KS	81	83	102	9.40	9.35	761	776	102
MI	54	52	96	9.65	9.70	521	504	97
MN	285	275	96	9.95	10.15	2,836	2,791	98
MO	185	185	100	9.80	10.05	1,813	1,859	103
NE	190	175	92	9.90	10.15	1,881	1,776	94
NC	540	475	88	9.70	9.70	5,238	4,608	88
OH	88	88	100	9.50	9.50	836	836	100
OK	185	190	103	9.00	9.75	1,665	1,853	111
PA	42	48	114	9.75	9.80	410	470	115
SD	86	86	100	10.10	10.30	869	886	102
TX	48	31	65	9.70	8.50	466	264	57
UT	43	41	95	9.90	10.00	426	410	96
Oth Sts ²	239	210	88	9.28	9.64	2,221	2,024	91
US ³	3,018	2,875	95	9.61	9.81	29,012	28,199	97

¹ Number of pigs born March-May that were still on hand June 1, or had been sold.

² Individual State estimates not available for the 34 Other States.

³ May not add due to rounding.

**Farrowings: Number of Sows, Pigs per Litter, and Pig Crop
by State and United States, June-August 2008-2010**

State	Sows Farrowing				Pigs per Litter		Pig Crop ¹		
	2008	2009	2010 ²		2008	2009	2008	2009	
			Number	as % of 2009				Number	as % of 2008
	<i>1,000 Head</i>	<i>1,000 Head</i>	<i>1,000 Head</i>	<i>Percent</i>	<i>Number</i>	<i>Number</i>	<i>1,000 Head</i>	<i>1,000 Head</i>	<i>Percent</i>
CO	76	72	74	103	8.90	9.50	676	684	101
IL	240	245	270	110	9.45	9.50	2,268	2,328	103
IN	145	135	145	107	9.25	9.50	1,341	1,283	96
IA	510	475	470	99	9.40	9.75	4,794	4,631	97
KS	81	80	83	104	9.15	9.25	741	740	100
MI	53	56	56	100	9.25	9.60	490	538	110
MN	285	275	285	104	9.80	10.00	2,793	2,750	98
MO	195	185	180	97	9.70	10.00	1,892	1,850	98
NE	185	185	180	97	9.70	10.05	1,795	1,859	104
NC	560	540	470	87	9.65	9.70	5,404	5,238	97
OH	89	86	83	97	9.50	9.60	846	826	98
OK	195	190	185	97	9.35	9.50	1,823	1,805	99
PA	38	42	49	117	9.60	10.00	365	420	115
SD	82	82	82	100	9.80	10.00	804	820	102
TX	52	44	29	66	8.55	9.00	445	396	89
UT	43	42	41	98	9.90	10.00	426	420	99
Oth Sts ³	246	225	208	92	9.50	9.45	2,337	2,130	91
US ⁴	3,075	2,959	2,890	98	9.51	9.70	29,240	28,718	98

¹ Number of pigs born June-August that were still on hand September 1, or had been sold.

² Intentions.

³ Individual State estimates not available for the 34 Other States.

⁴ May not add due to rounding.

**Farrowings: Number of Sows, Pigs per Litter, and Pig Crop
by State and United States, September-November 2008-2010**

State	Sows Farrowing				Pigs Per Litter		Pig Crop ¹		
	2008	2009	2010 ²		2008	2009	2008	2009	
			Number	as % of 2009				Number	as % of 2008
	<i>1,000 Head</i>	<i>1,000 Head</i>	<i>1,000 Head</i>	<i>Percent</i>	<i>Number</i>	<i>Number</i>	<i>1,000 Head</i>	<i>1,000 Head</i>	<i>Percent</i>
CO	71	69	73	106	8.80	9.50	625	656	105
IL	255	255	270	106	9.40	9.45	2,397	2,410	101
IN	140	135	150	111	9.20	9.55	1,288	1,289	100
IA	510	480	475	99	9.50	9.80	4,845	4,704	97
KS	76	84	83	99	9.40	9.35	714	785	110
MI	53	56	55	98	9.65	9.80	512	549	107
MN	285	275	290	105	9.85	10.05	2,807	2,764	98
MO	200	190	190	100	9.65	9.90	1,930	1,881	97
NE	185	175	180	103	9.80	10.00	1,813	1,750	97
NC	520	510	460	90	9.55	9.60	4,966	4,896	99
OH	89	87	85	98	9.00	9.40	801	818	102
OK	185	185	185	100	9.20	9.50	1,702	1,758	103
PA	40	46	49	107	9.35	9.90	374	455	122
SD	84	80	83	104	9.80	10.10	823	808	98
TX	50	30	28	93	9.55	9.35	478	281	59
UT	40	40	40	100	10.00	9.80	400	392	98
Oth Sts ³	245	218	203	93	9.37	9.47	2,296	2,064	90
US ⁴	3,028	2,915	2,899	99	9.50	9.70	28,771	28,260	98

¹ Number of pigs born September-November that were still on hand December 1, or had been sold.

² Intentions.

³ Individual State estimates not available for the 34 Other States.

⁴ May not add due to rounding.

**Monthly Farrowings: Number of Sows, Pigs per Litter, and Pig Crop,
United States, December-November 2009-2010**

Month	Sows Farrowing ¹		Pigs per Litter		Pig Crop ¹	
	2009	2010	2009	2010	2009	2010
	<i>1,000 Head</i>	<i>1,000 Head</i>	<i>Number</i>	<i>Number</i>	<i>1,000 Head</i>	<i>1,000 Head</i>
Dec ²	997	980	9.50	9.62	9,475	9,425
Jan	1,013	970	9.45	9.58	9,576	9,292
Feb	1,001	952	9.49	9.62	9,501	9,156
Mar	1,009	972	9.56	9.76	9,650	9,486
Apr	1,003	950	9.61	9.84	9,644	9,350
May	1,006	953	9.66	9.82	9,718	9,363
Jun	996		9.71		9,673	
Jul	986		9.70		9,567	
Aug	978		9.69		9,478	
Sep	994		9.71		9,647	
Oct	965		9.70		9,364	
Nov	956		9.68		9,249	
Total	11,904		9.62		114,542	

¹ Monthly values may not add to quarterly or annual totals due to rounding.

² December preceding year.

Reliability of June 1 Hogs and Pigs Estimates

Survey Procedures: A random sample of roughly 8,800 U.S. producers was surveyed to provide data for these estimates. Survey procedures ensured that all hog and pig producers, regardless of size, had a chance to be included in the survey. Large producers were sampled more heavily than small operations. During the first half of June 2010, data were collected from about 7,200 operations, 82 percent of the total sample. The data collected were received by electronic data reporting (EDR), mail, telephone, and face-to-face personal interviews. Regardless of when operations responded, they were asked to report inventories as of June 1, 2010.

Estimation Procedures: Hogs and pigs estimates were prepared by the Agricultural Statistics Board after reviewing recommendations and analysis submitted by each field office. National and State survey data were reviewed for reasonableness with each other and with estimates from past years using a balance sheet. The balance sheet begins with the previous inventory estimate, adds the estimates of births and imports, and subtracts the estimates of slaughter, exports, and deaths. This indicated ending inventory level is compared to the Agricultural Statistics Board estimate for reasonableness.

Revision Policy: Revisions to previous estimates are made to improve quarter to quarter relationships. Estimates for the previous four quarters are subject to revision when current estimates are made. In December, estimates for all quarters of the current and previous year are reviewed. The reviews are primarily based on hog check-off receipts and slaughter. Estimates will also be reviewed after data from the Department of Agriculture five-year Census of Agriculture are available. No revisions will be made after that date.

Reliability: Since all operations raising hogs are not included in the sample, survey estimates are subject to sampling variability. Survey results are also subject to non-sampling errors such as omissions, duplication, and mistakes in reporting, recording, and processing the data. The affects of these errors cannot be measured directly. They are minimized through rigid quality controls in the data collection process and through a careful review of all reported data for consistency and reasonableness.

To assist users in evaluating the reliability of the estimates in this report, the "**Root Mean Square Error**" is shown for selected items in the following table. The "Root Mean Square Error" is a statistical measure based on past performance and is computed using the difference between first and final estimates. The "Root Mean Square Error" for hog inventory estimates over the past 20 quarters is 1.6 percent. This means that chances are 2 out of 3 that the final estimate will not be above or below the current estimate of 64.4 million head by more than 1.6 percent. Chances are 9 out of 10 that the difference will not exceed 2.8 percent.

Reliability of June 1 Hog Estimates

Item	Root Mean Square Error	90% Confidence Level		Difference Between First and Latest Estimates			Quarters	
				Average	Smallest	Largest	First Above Latest	First Below Latest
				<i>1,000 Head</i>	<i>1,000 Head</i>	<i>1,000 Head</i>	<i>Number</i>	<i>Number</i>
All Hogs & Pigs	1.6	2.8	1,803	738	67	3,067	5	15
Pig Crop	2.0	3.5	987	393	0	1,644	5	14
Expected Farrowings								
Next Quarter	2.4	4.1	119	47	3	216	5	15
Following Quarter	2.6	4.5	130	52	3	220	5	15

Information Contacts

Listed below are the commodity specialists in the Livestock Branch of the National Agricultural Statistics Service to contact for additional information.

- Dan Kerestes, Chief, Livestock Branch (202) 720-3570
- Scott Hollis, Head, Livestock Section (202) 690-2424
 - Jim Collom – Dairy Products (202) 690-3236
 - Joe Gaynor – Dairy Products Prices (202) 690-2168
 - Jason Hardegee – Cattle, Cattle on Feed (202) 720-3040
 - Sherry Bertramsen – Livestock Slaughter (515) 284-4340
 - Everett Olbert – Sheep and Goats (202) 720-4751
 - Mike Miller – Milk Production and Milk Cows (202) 720-3278
 - Nick Streff – Hogs and Pigs (202) 720-3106

ACCESS TO REPORTS!!

For your convenience, there are several ways to obtain NASS reports, data products, and services:

INTERNET ACCESS

All NASS reports are available free of charge. For free access, connect to the Internet and go to the NASS Home Page at: www.nass.usda.gov.

E-MAIL SUBSCRIPTION

All NASS reports are available by subscription free of charge direct to your e-mail address. Starting with the NASS Home Page at www.nass.usda.gov, under the right navigation, *Receive reports by Email*, click on **National** or **State**. Follow the instructions on the screen.

PRINTED REPORTS OR DATA PRODUCTS

CALL OUR TOLL-FREE ORDER DESK: 800-999-6779 (U.S. and Canada)
Other areas, please call 703-605-6220 FAX: 703-605-6880
(Visa, MasterCard, check, or money order acceptable for payment.)

ASSISTANCE

For **assistance** with general agricultural statistics or further information about NASS or its products or services, contact the **Agricultural Statistics Hotline** at **800-727-9540**, 7:30 a.m. to 4:00 p.m. ET, or e-mail: nass@nass.usda.gov.

The U.S. Department of Agriculture (USDA) prohibits discrimination in all its programs and activities on the basis of race, color, national origin, age, disability, and where applicable, sex, marital status, familial status, parental status, religion, sexual orientation, genetic information, political beliefs, reprisal, or because all or a part of an individual's income is derived from any public assistance program. (Not all prohibited bases apply to all programs.) Persons with disabilities who require alternative means for communication of program information (Braille, large print, audiotape, etc.) should contact USDA's TARGET Center at (202) 720-2600 (voice and TDD).

To file a complaint of discrimination, write to USDA, Director, Office of Civil Rights, 1400 Independence Avenue, S.W., Washington, D.C. 20250-9410, or call (800) 795-3272 (voice) or (202) 720-6382 (TDD). USDA is an equal opportunity provider and employer.