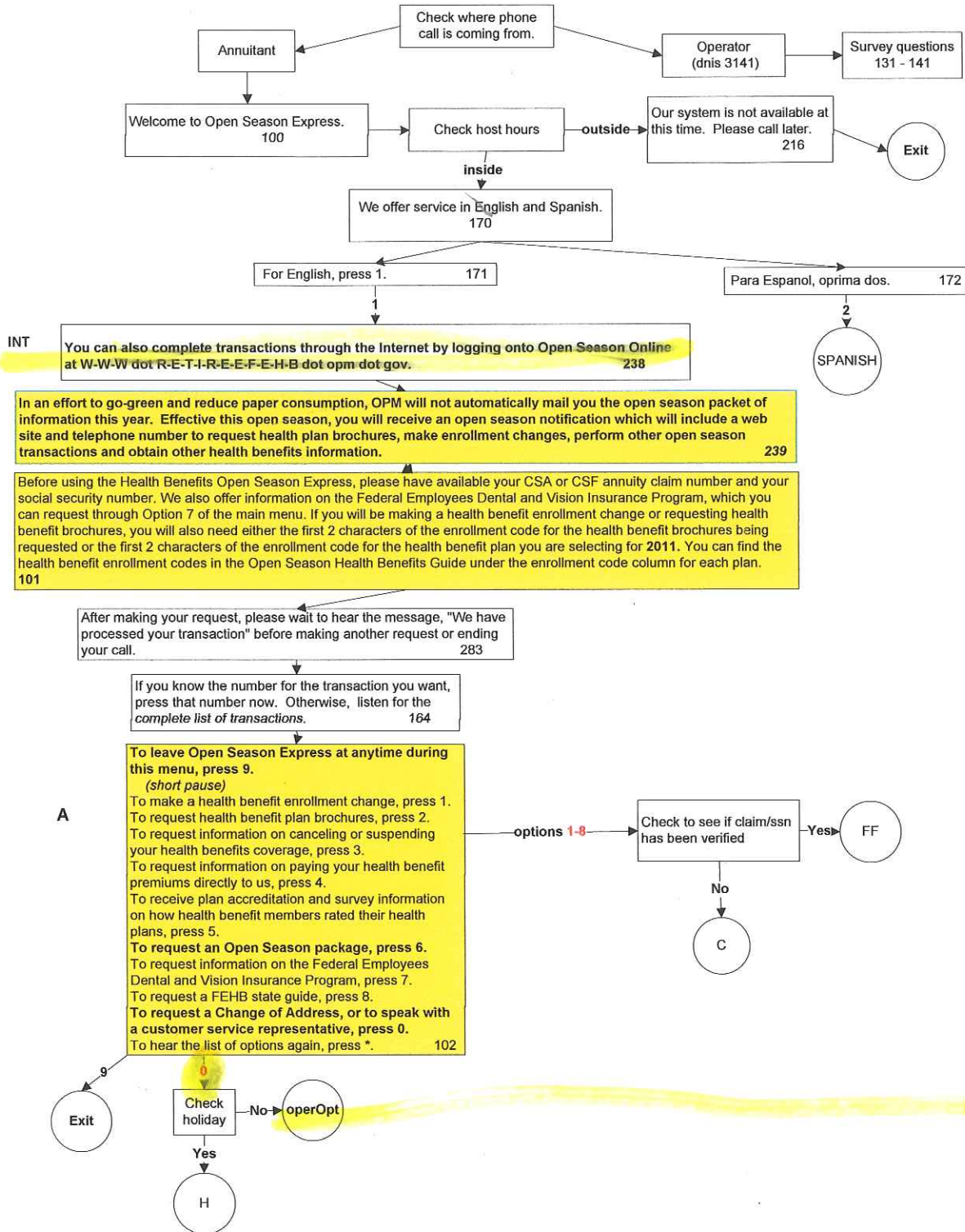
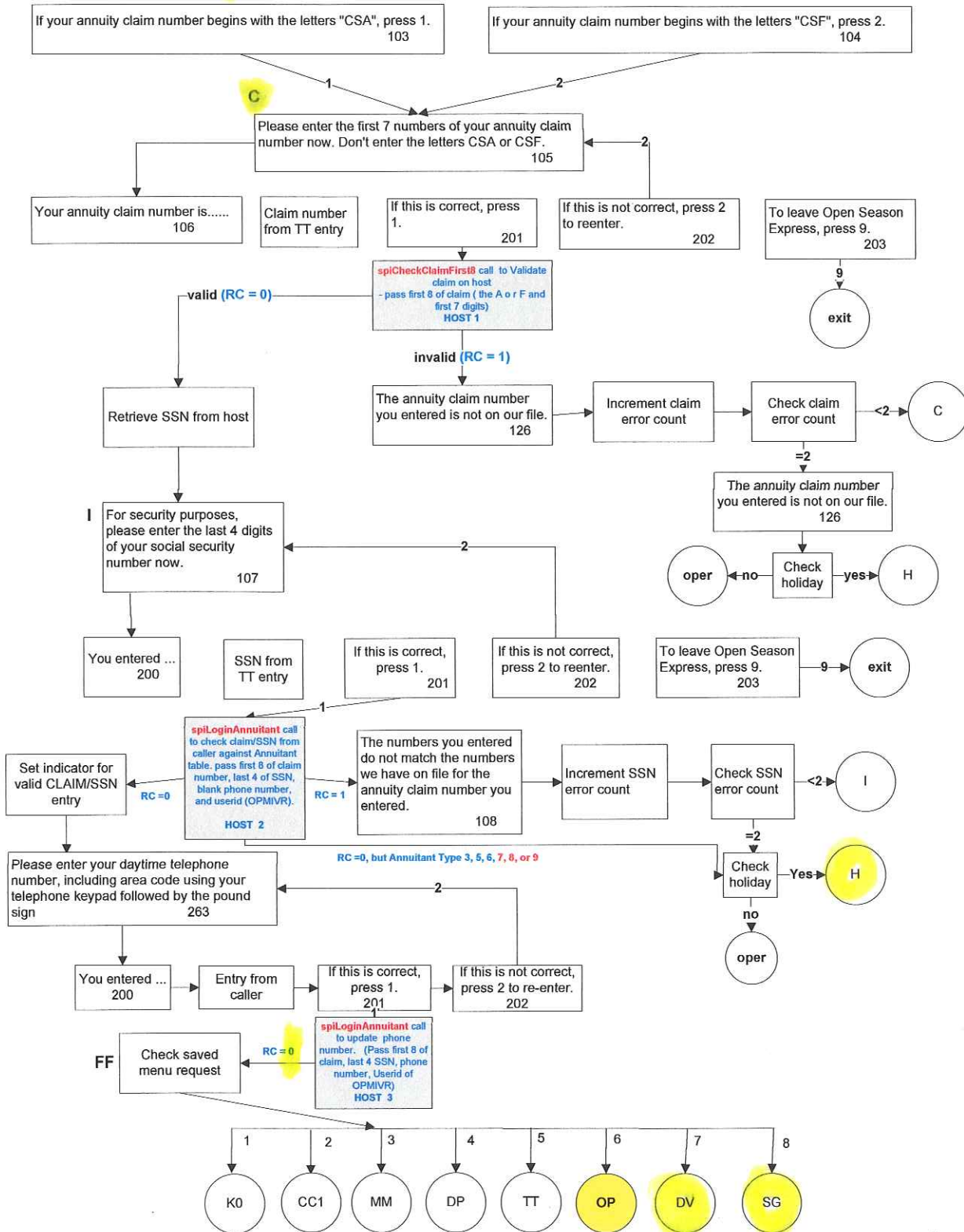


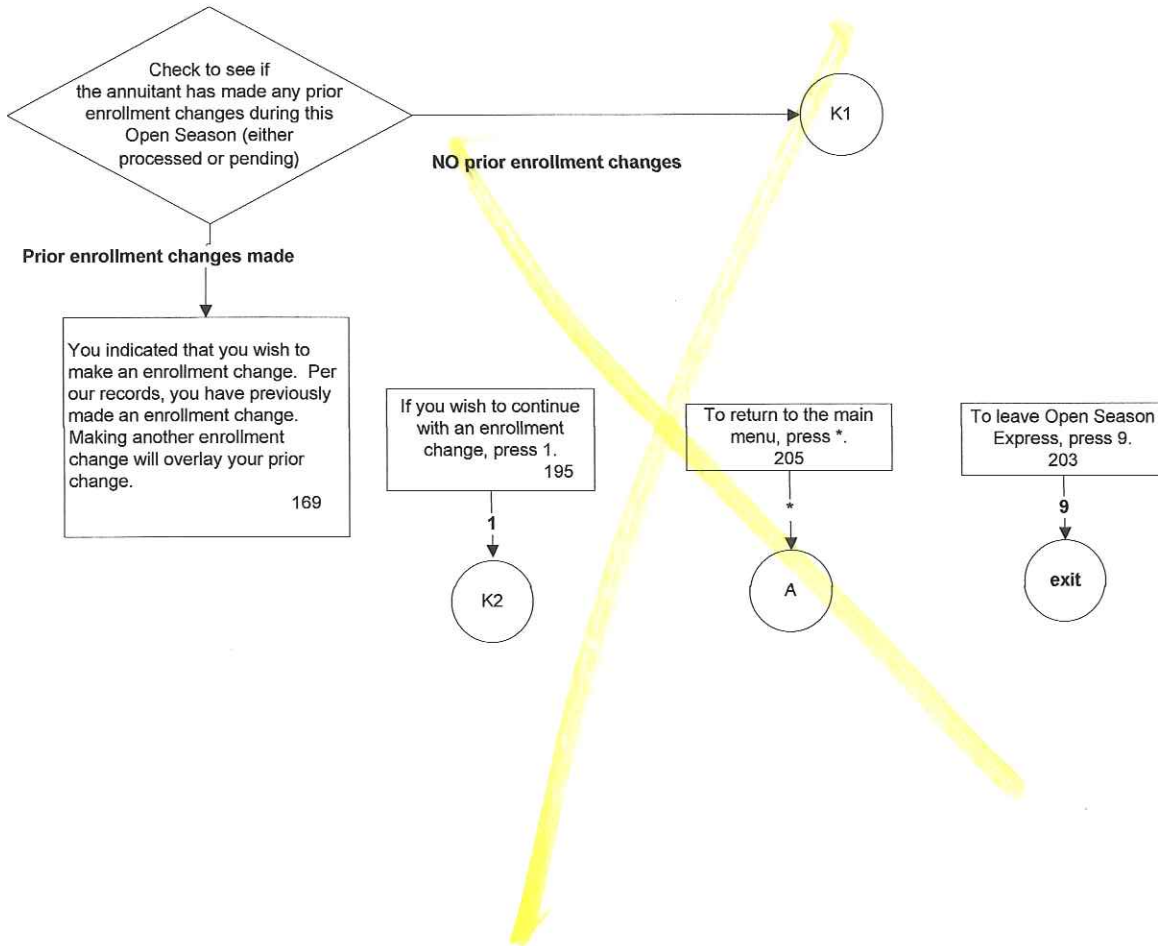
2010 Open Season Express

06/17/10





K0



Enrollment Requests

K1

You indicated that you wish to make an enrollment change. 166

If this is correct, press 1. 201

To return to the main menu, press *. 205

To leave Open Season Express, press 9. 203

K2

Is annuitant's Date of Birth missing?

Yes

Is the annuitant's gender missing?

If you are male, press 1. If female, press 2. 262

You selected male 173

You selected Female 174

If this is correct, press 1. 201

If this is not correct, press 2 to re-enter. 202

Please remember, your enrollment change will not be complete until you hear the message, "We have processed your transaction." 284

K3

If you want self only coverage, press 1. 115

If you want self and family coverage, press 2. 116

You entered ... 200

TT entry

Note: This prompt was previously done after the plan code collection; switching order.

If this is correct, press 1. 201

If this is not correct, press 2 to reenter. 202

Was coverage chosen Self and Family?

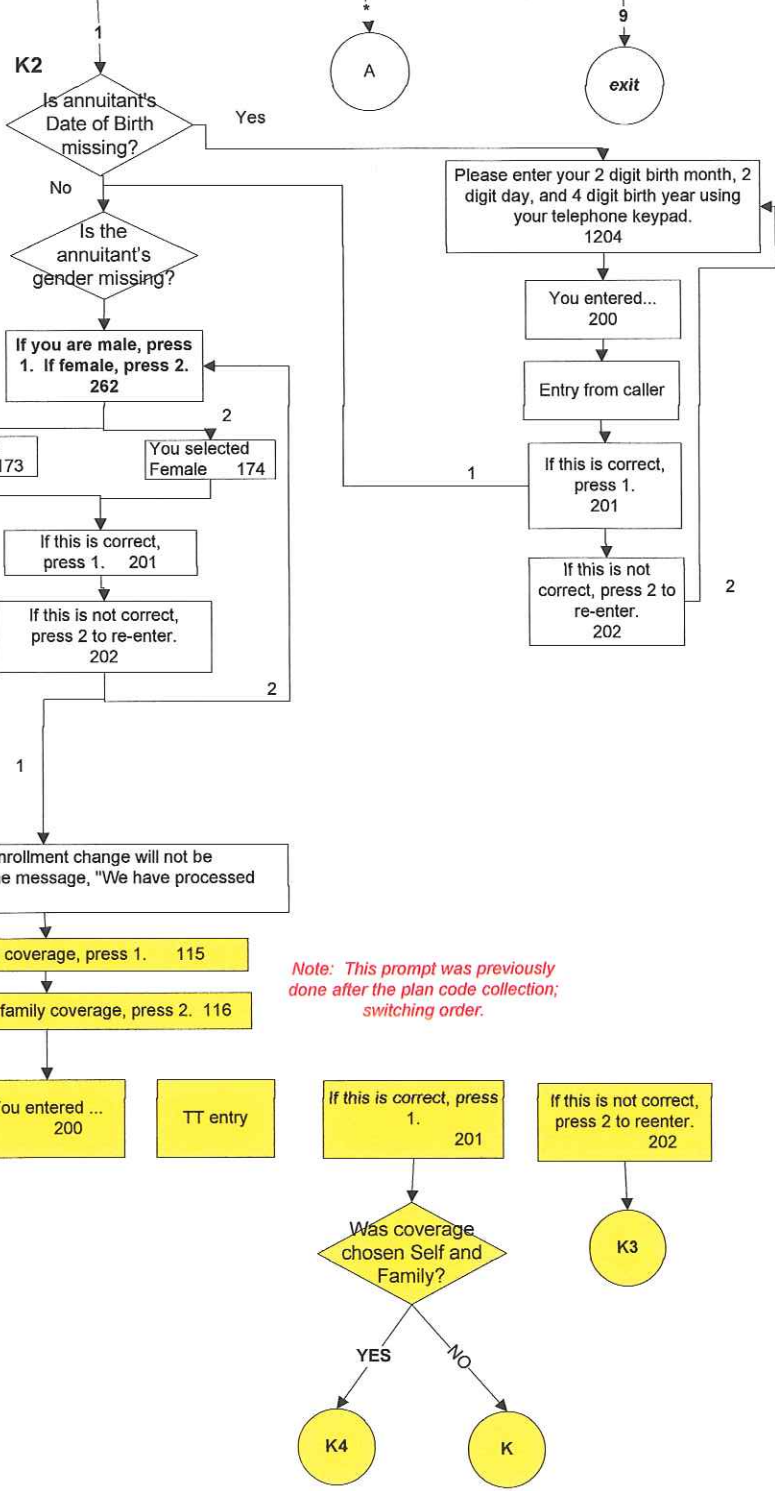
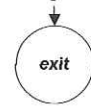
YES

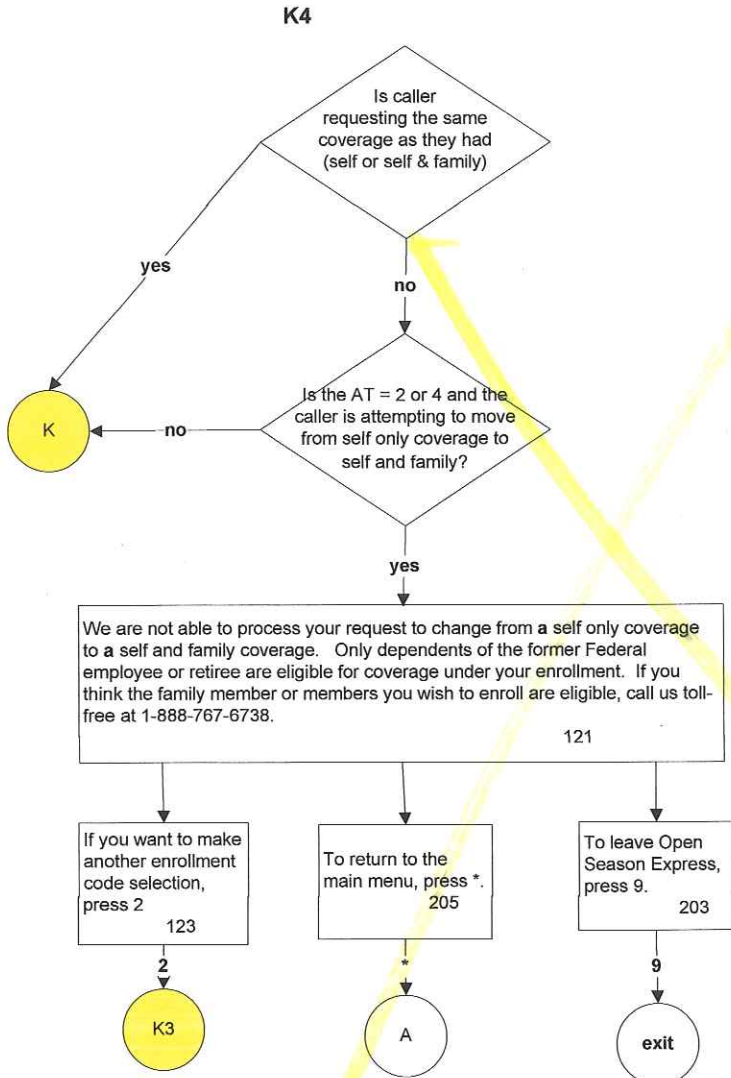
NO

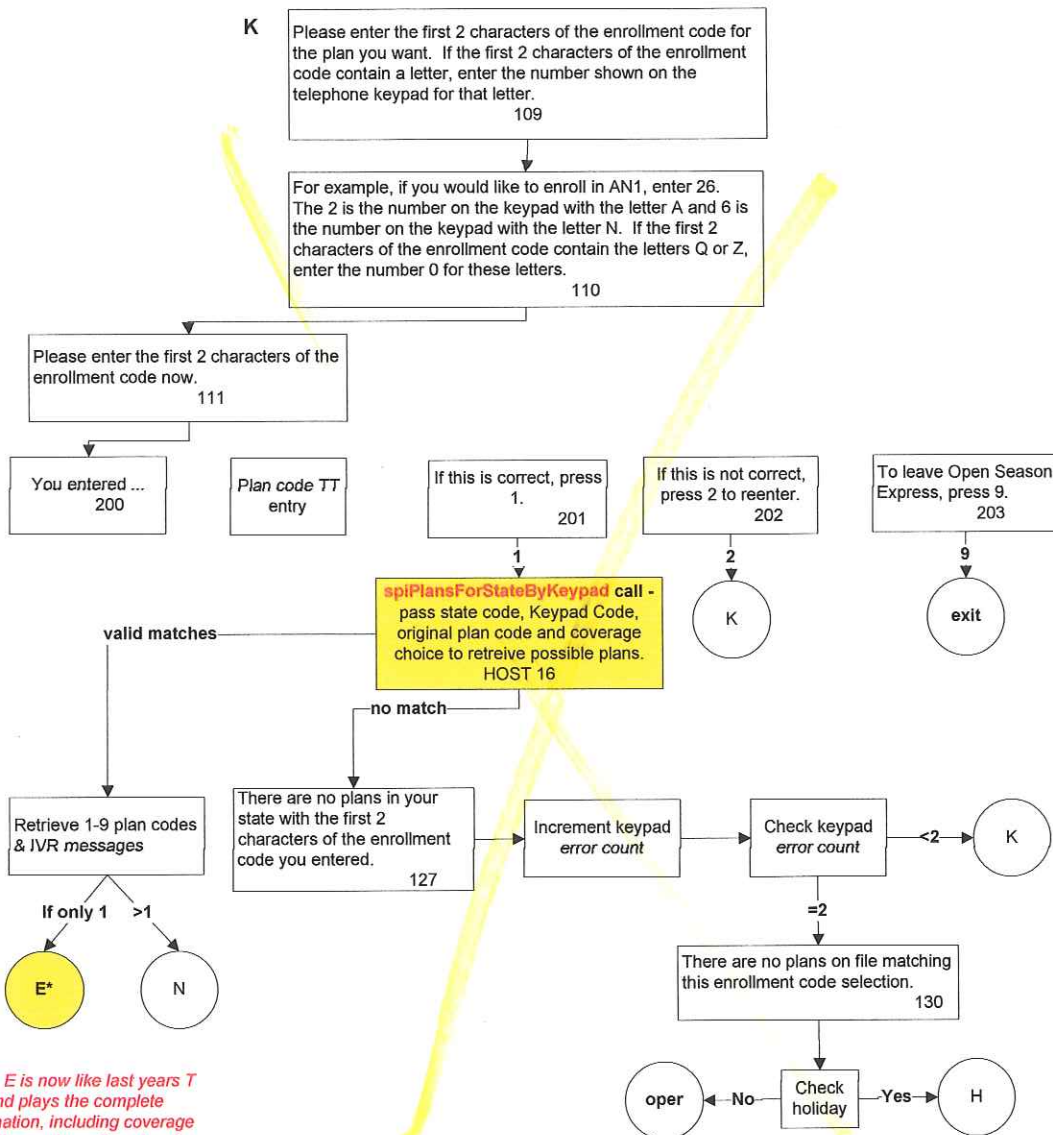
K4

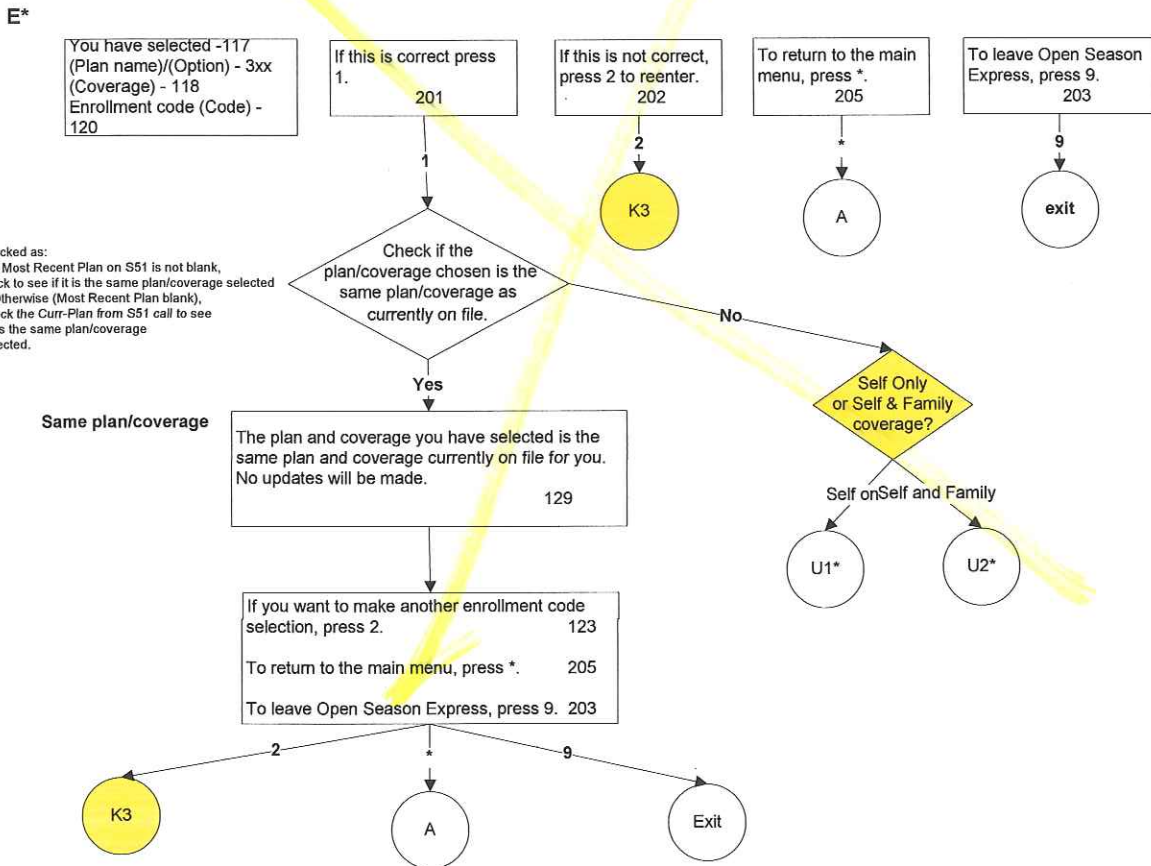
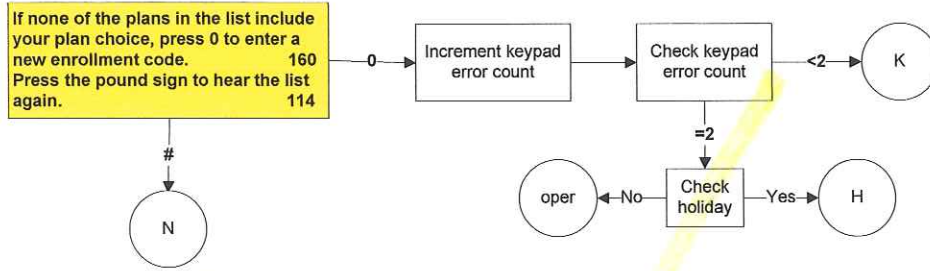
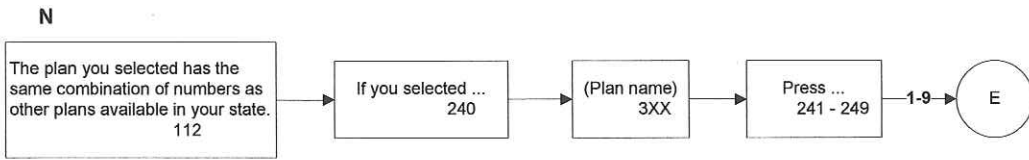
K

K3





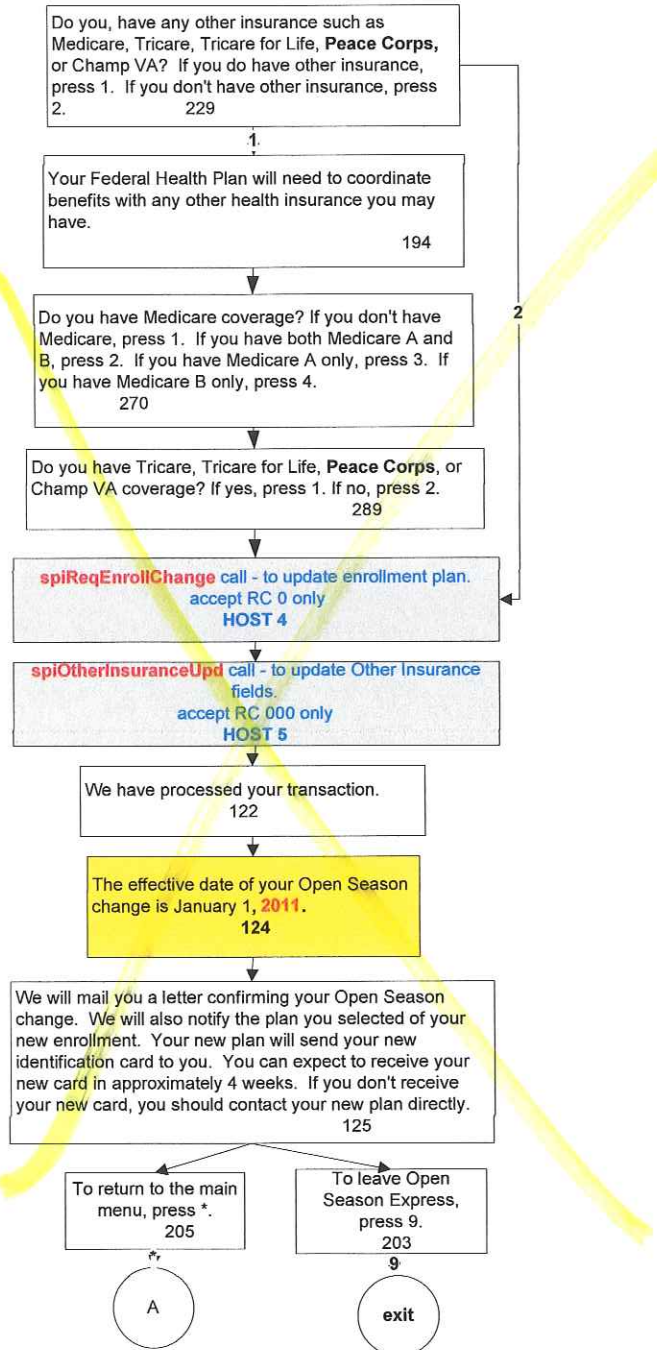




Enrollment Requests
self only

06/30/10

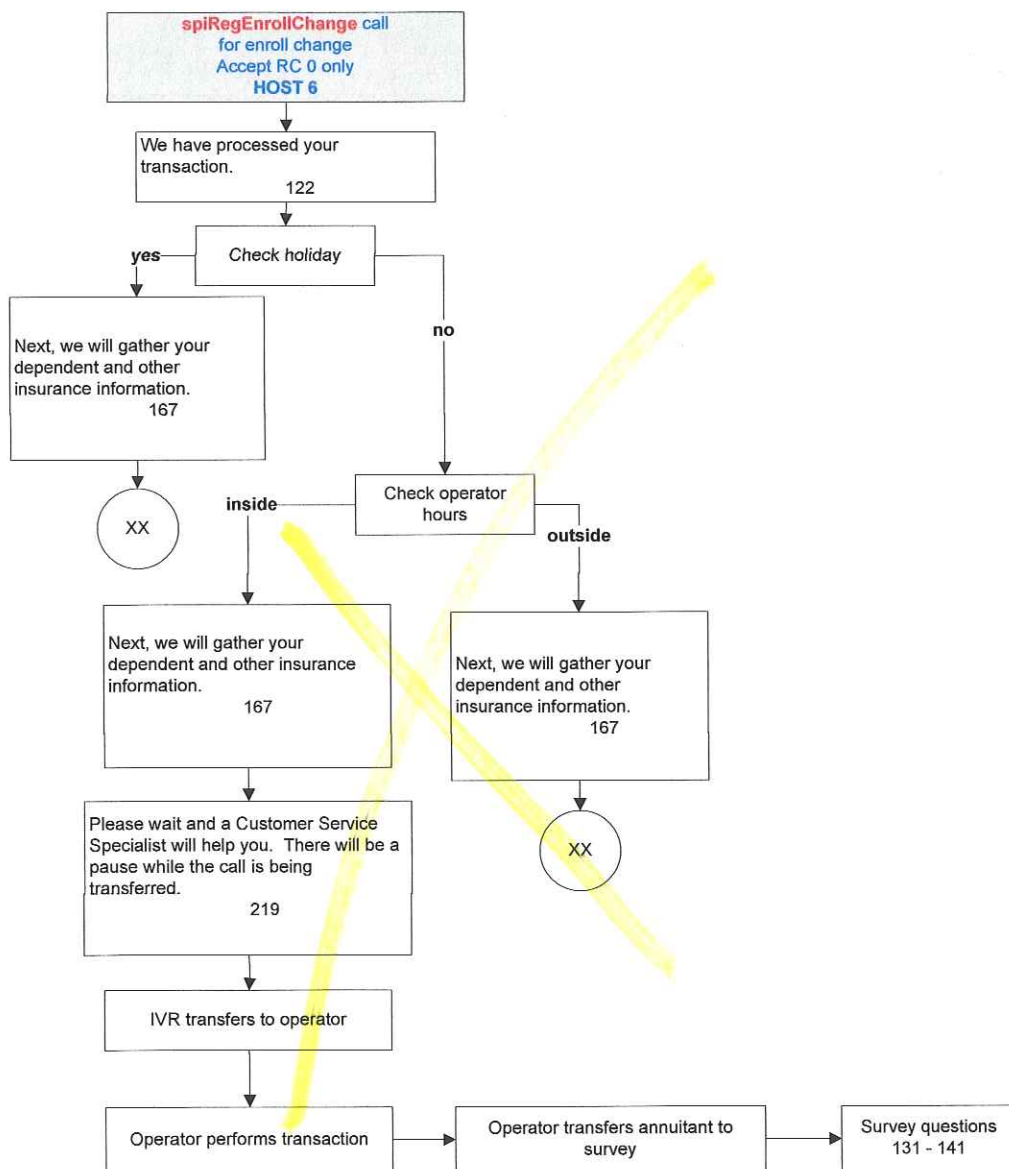
U1



Enrollment Requests
self & family

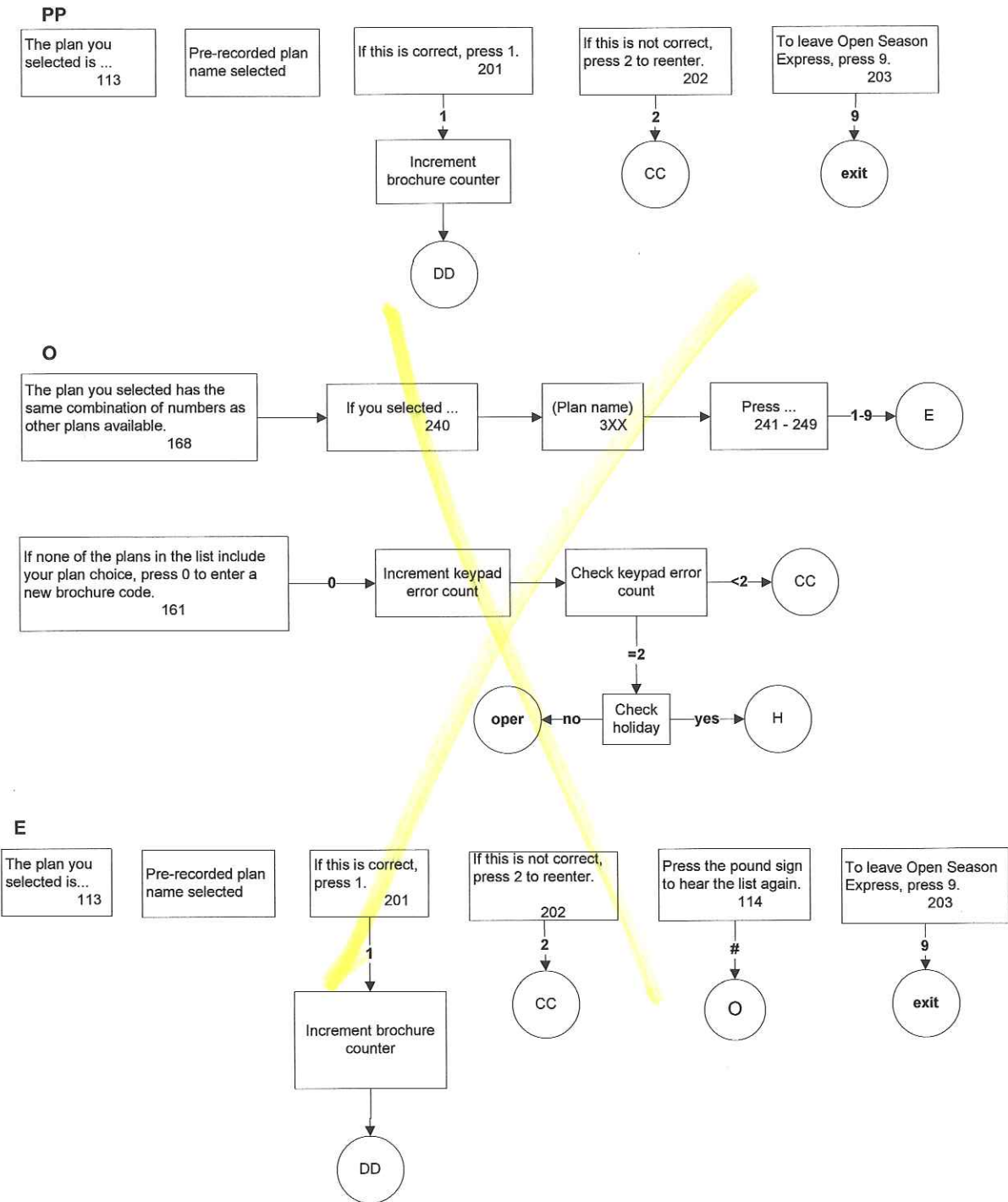
06/30/10

U2

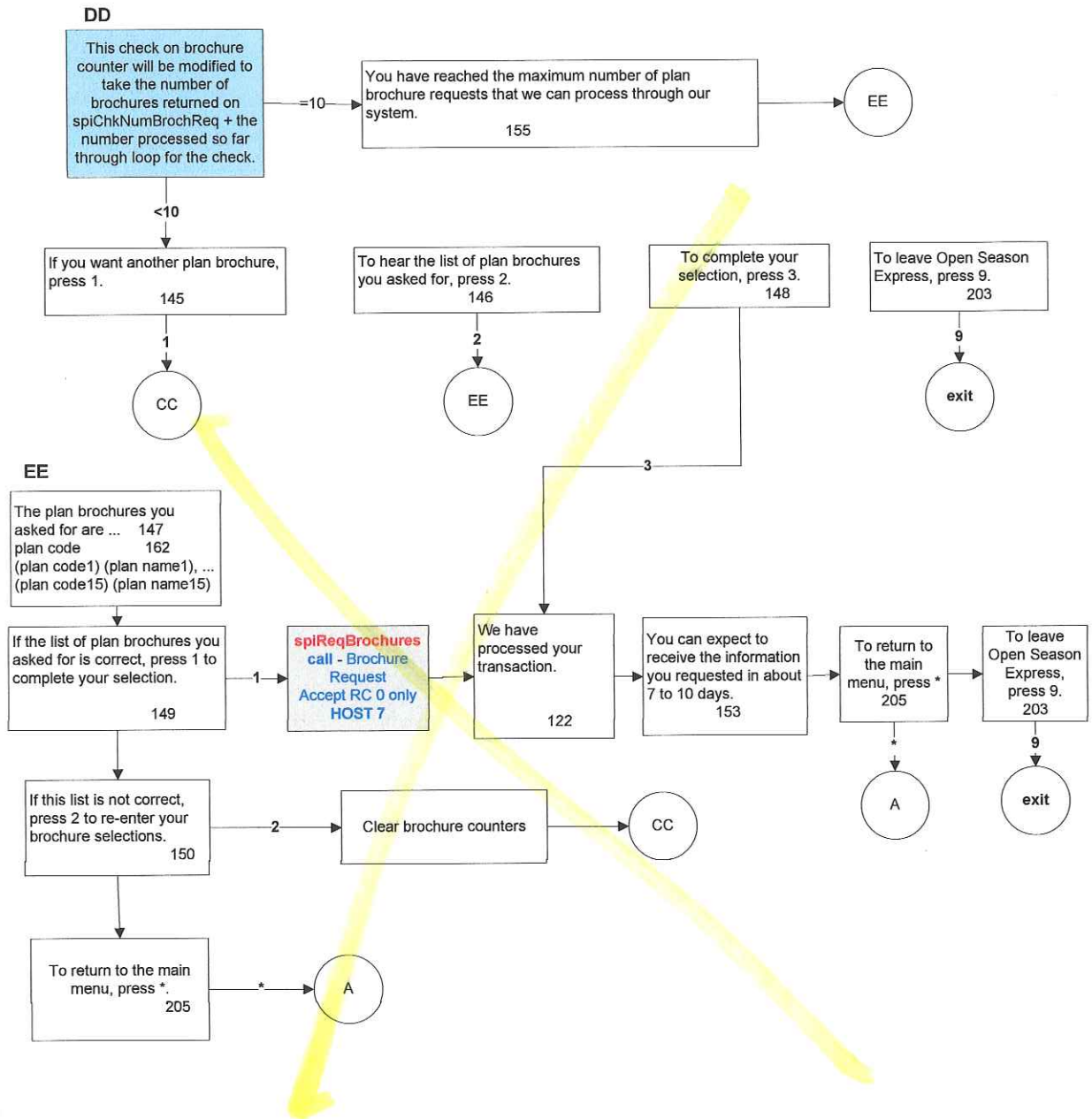


Brochure Requests

03/24/10



Brochure Requests



Premiums to OPM

03/24/10

DP

You indicated that you wish to receive information on how to pay your premiums directly to us. Please note this option is only available when your monthly annuity payment is not large enough to cover the cost of the monthly health benefits premium.
156

If this is correct, press 1.
201

To return to the main menu, press *.
205

To leave Open Season Express, press 9.
203

1
spiReqInfo call –
Passing TransType of "DP" for Direct Pay Info Request.
Accept RC 0 only.
HOST 8

*
A

9
exit

We have processed your transaction.
122

You can expect to receive the information you requested in about 7 to 10 days.
153

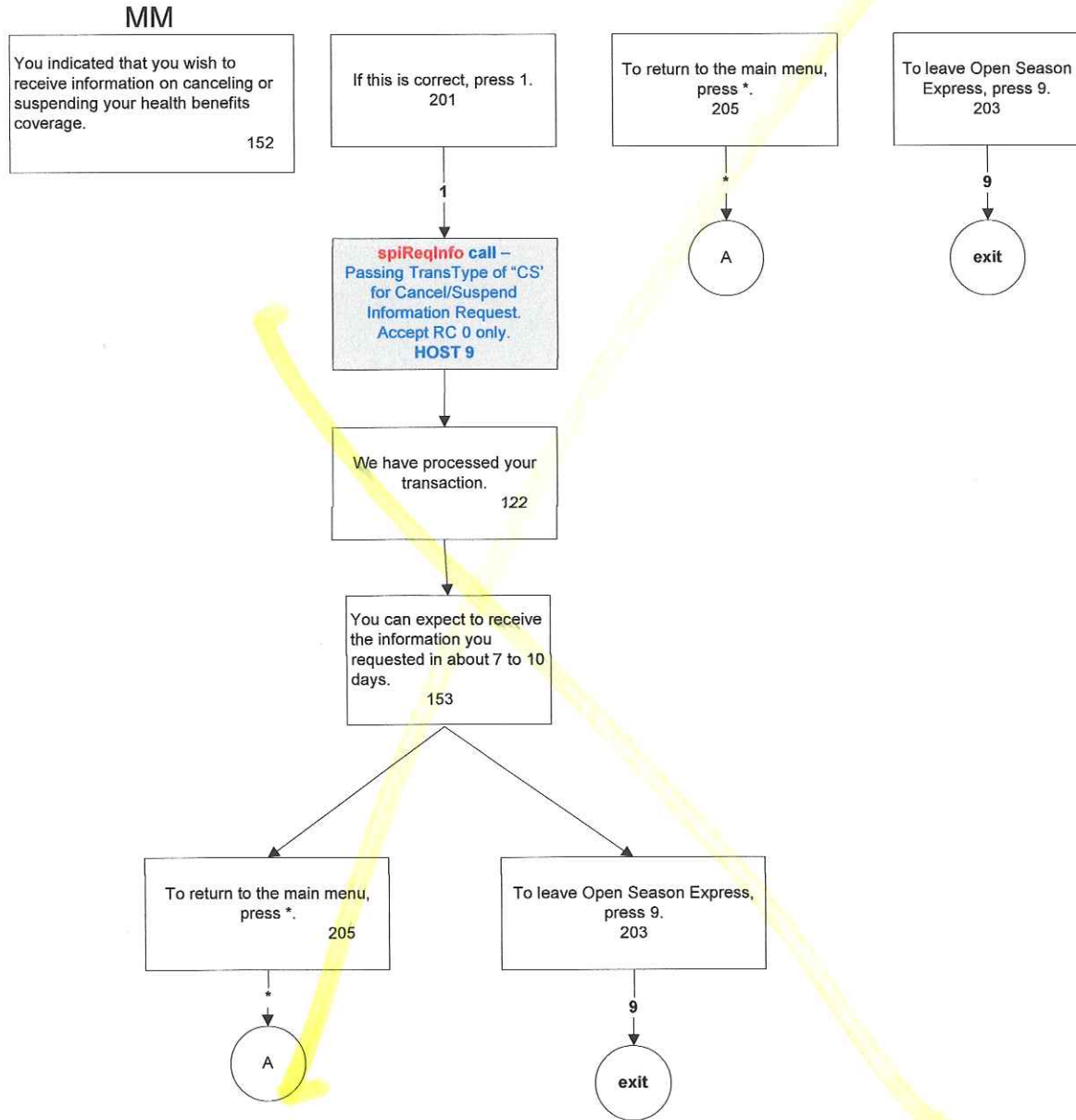
To return to the main menu, press *.
205

To leave Open Season Express, press 9.
203

*
A

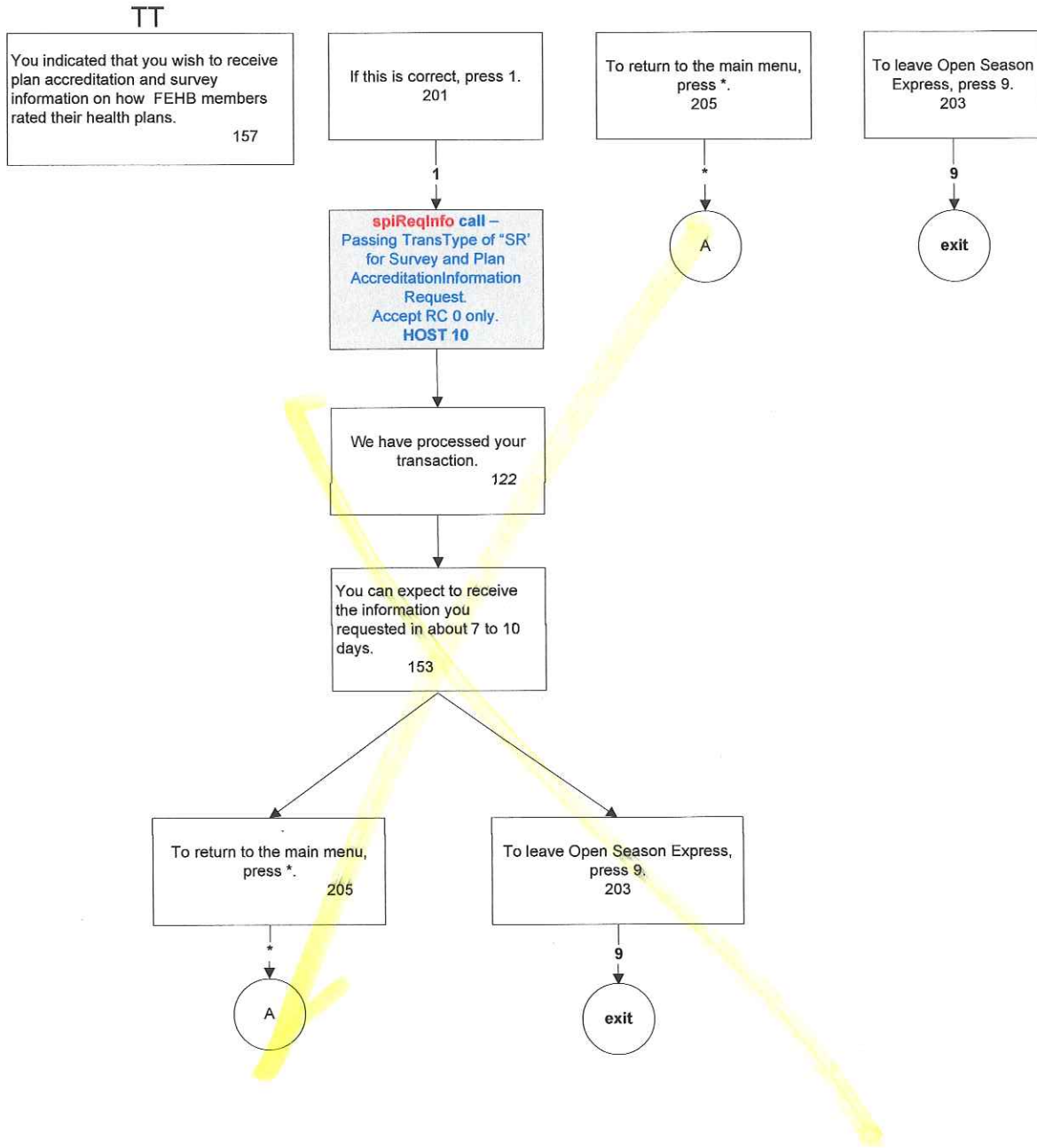
9
exit

Suspend/Cancel



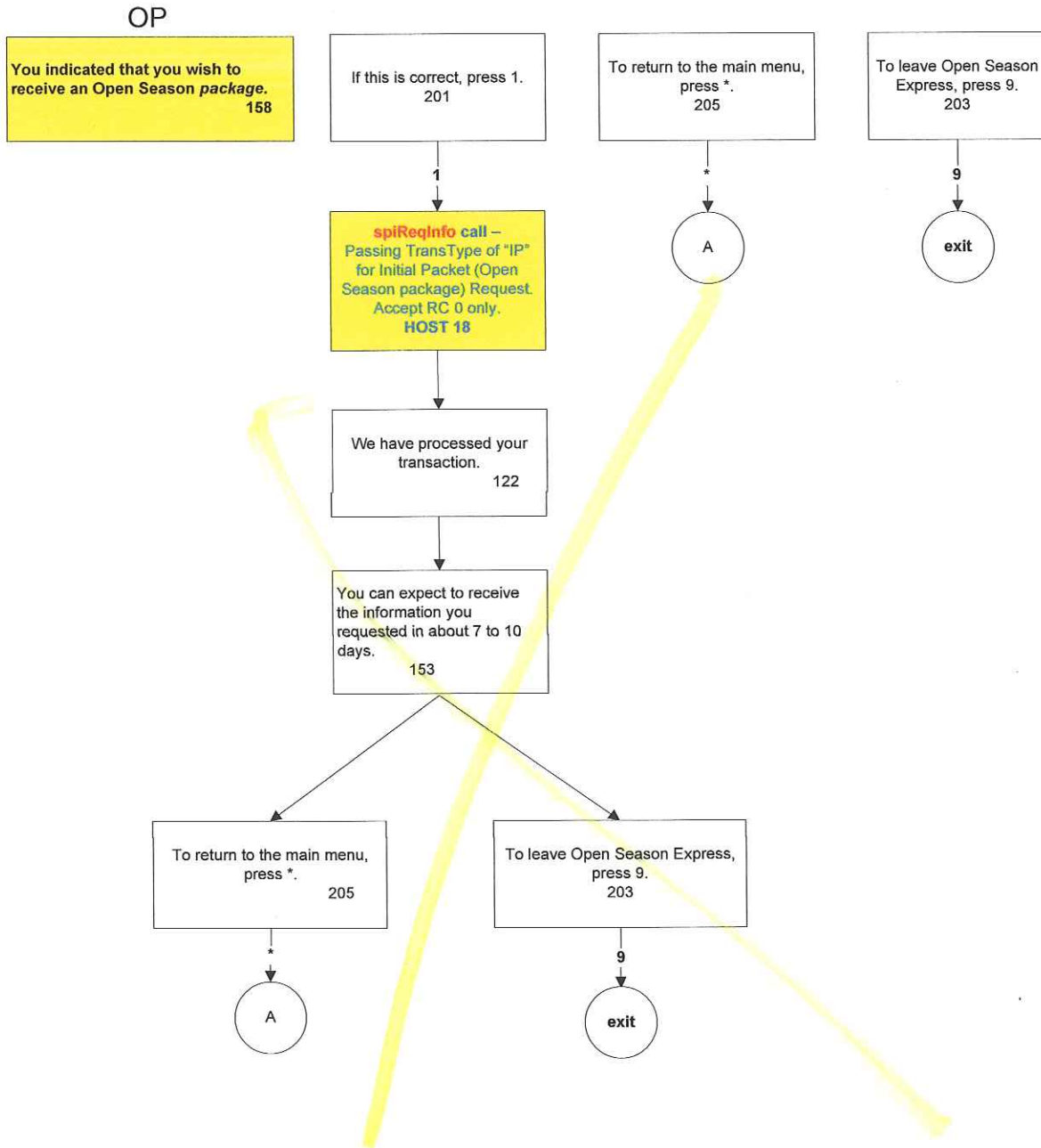
Health Plan Survey

03/24/10



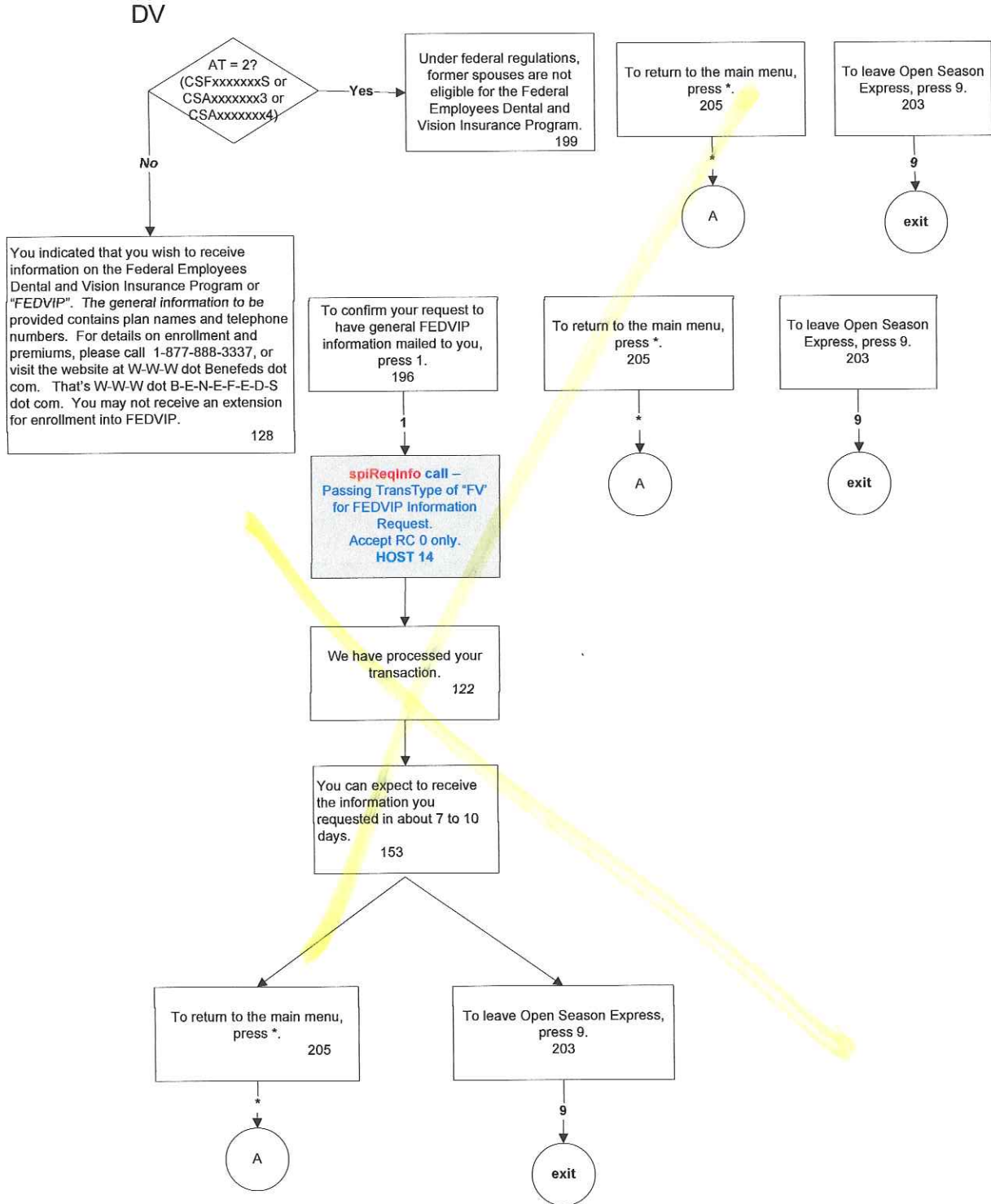
Open Season Packet

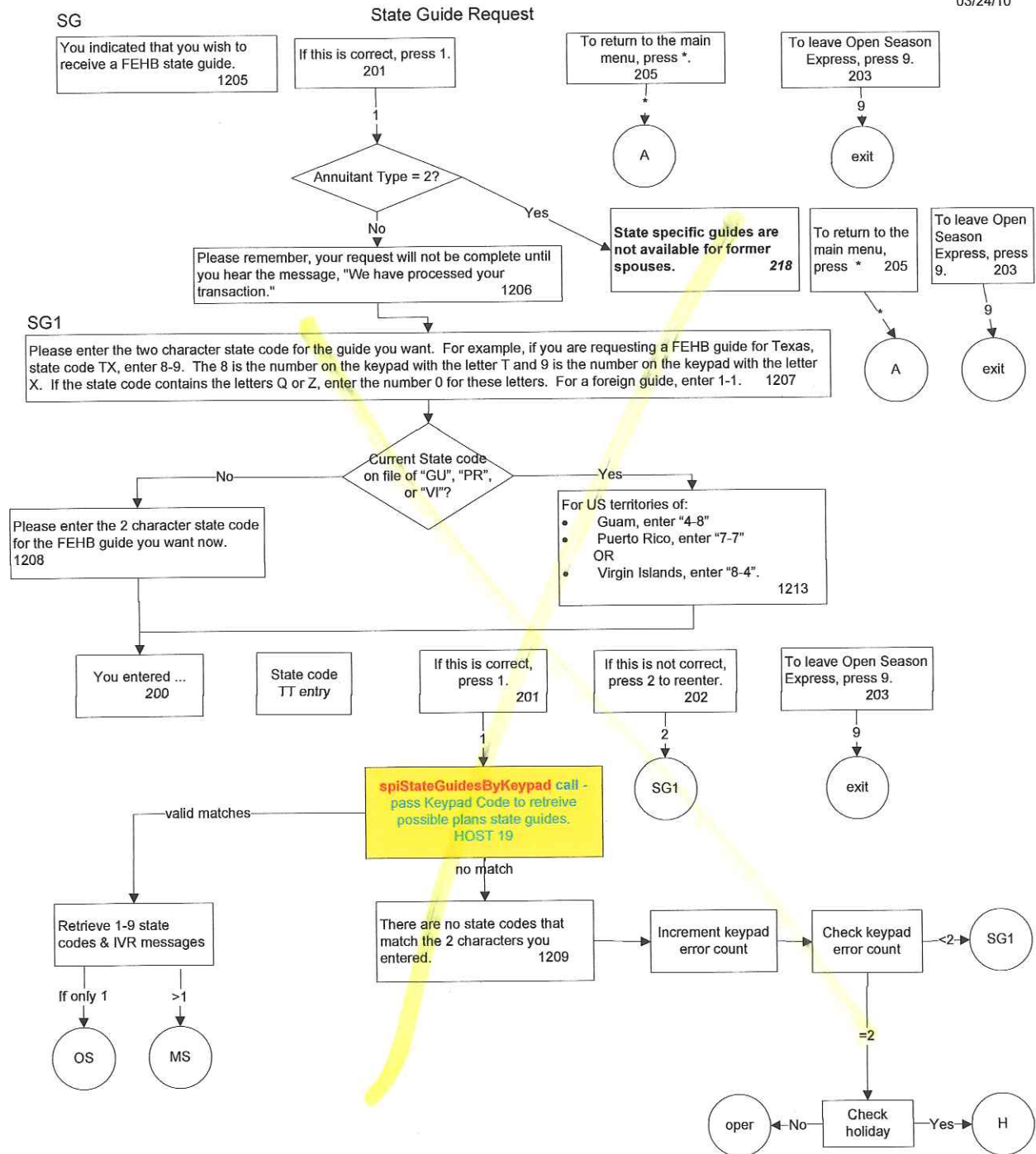
06/29/10

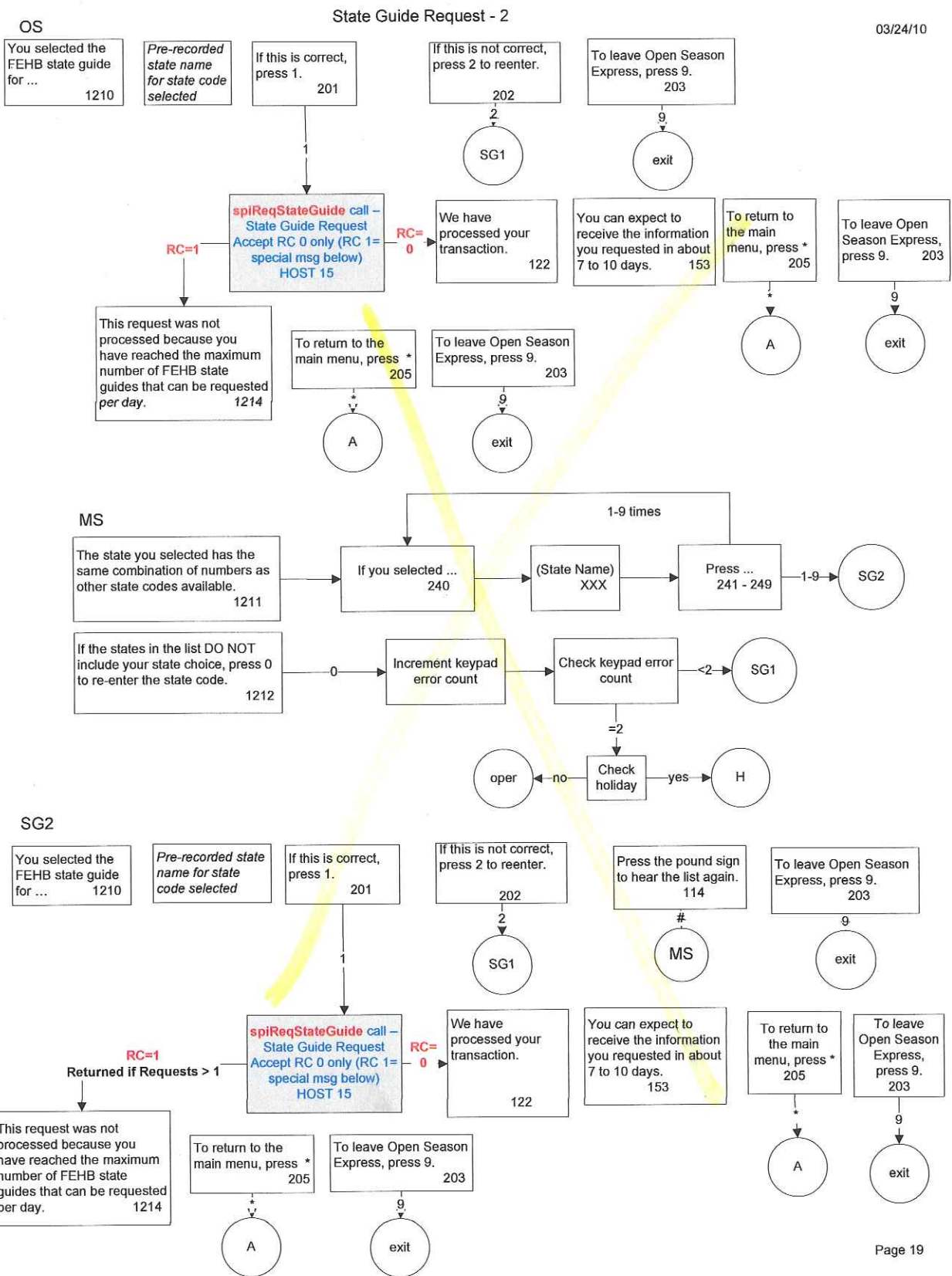


FEDVIP

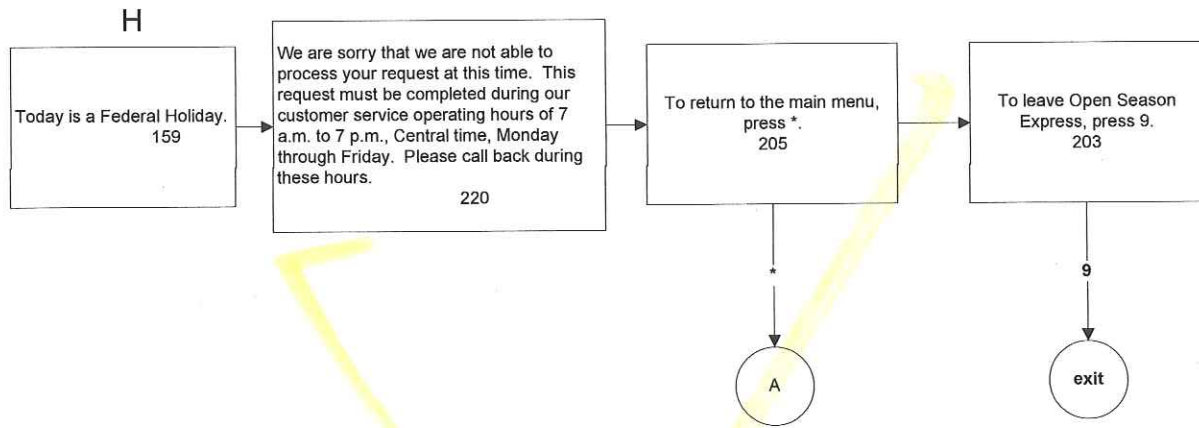
03/24/10







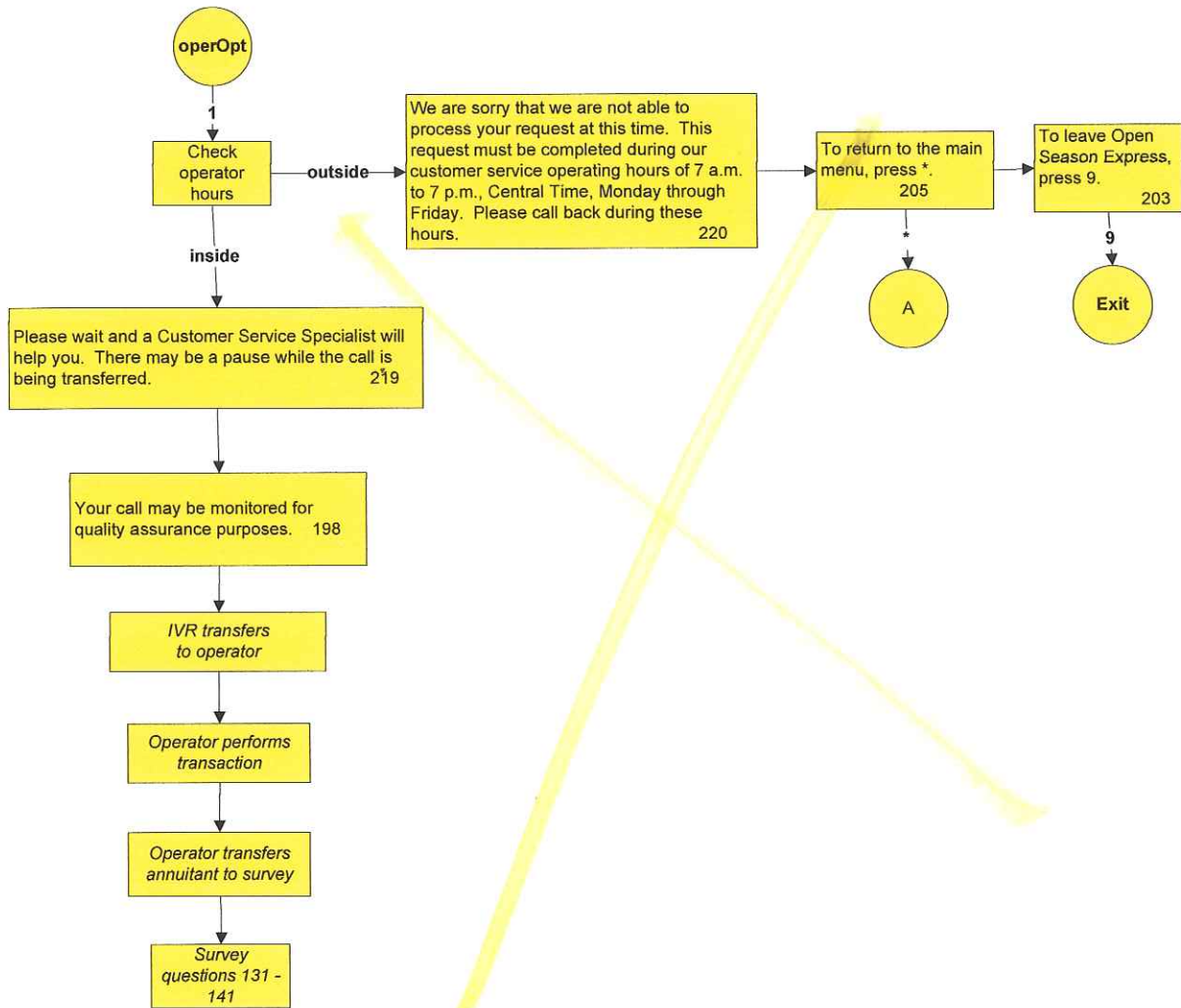
Federal Holiday



Transfer to Operator

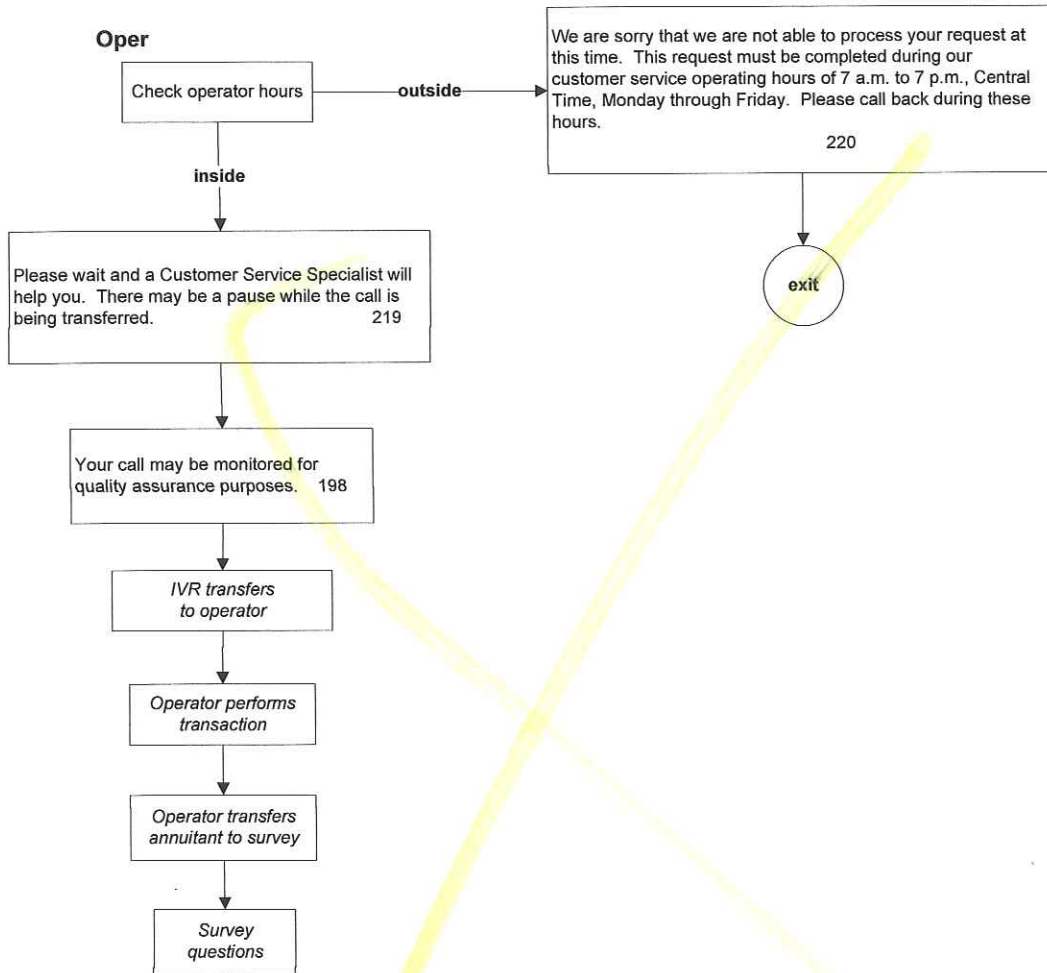
with option to return to MM
if Outside of CSR hours

07/26/10

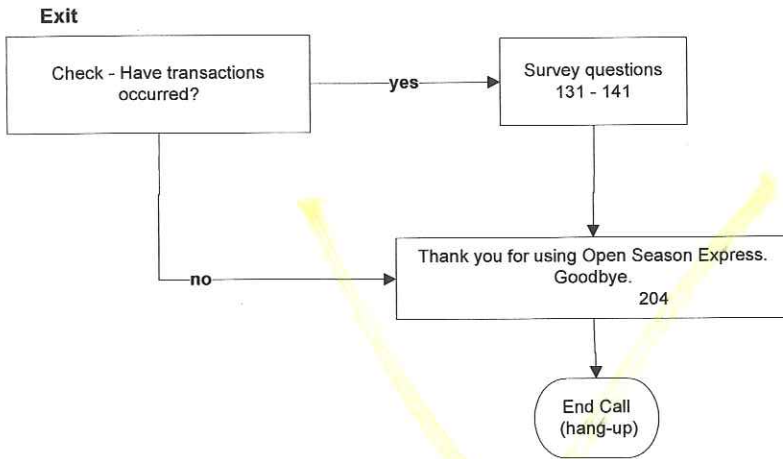


Transfer to operator

03/24/10



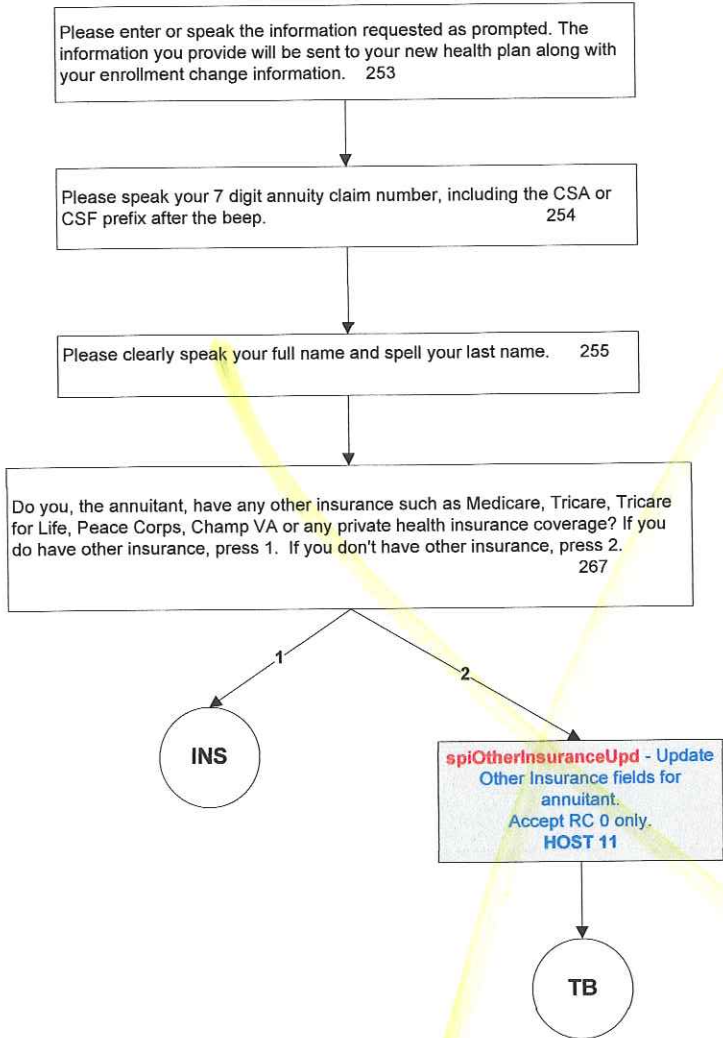
Exit Routine



Transcription Box

03/24/10

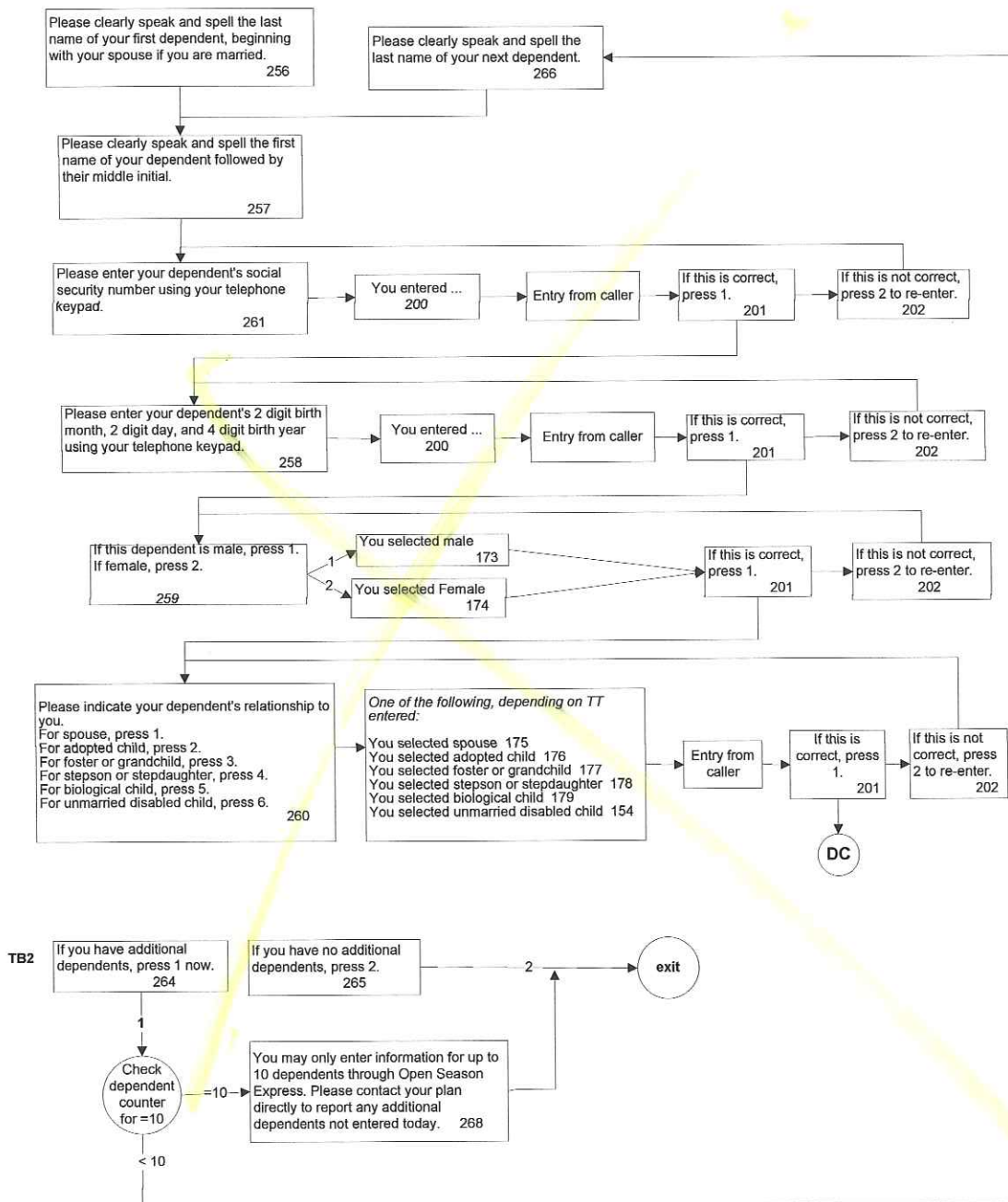
XX



Transcription Box
Dependent Information

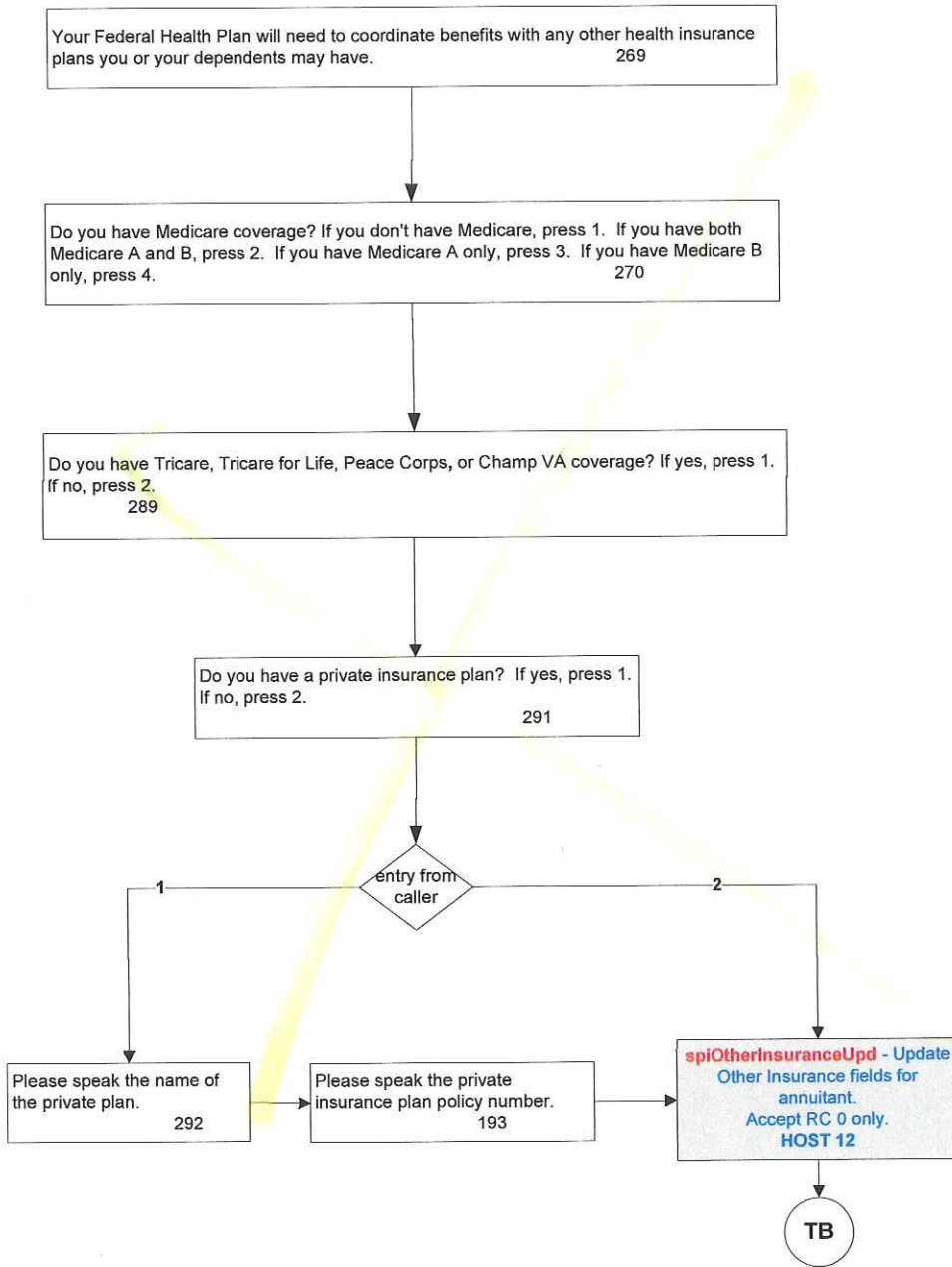
03/24/10

TB



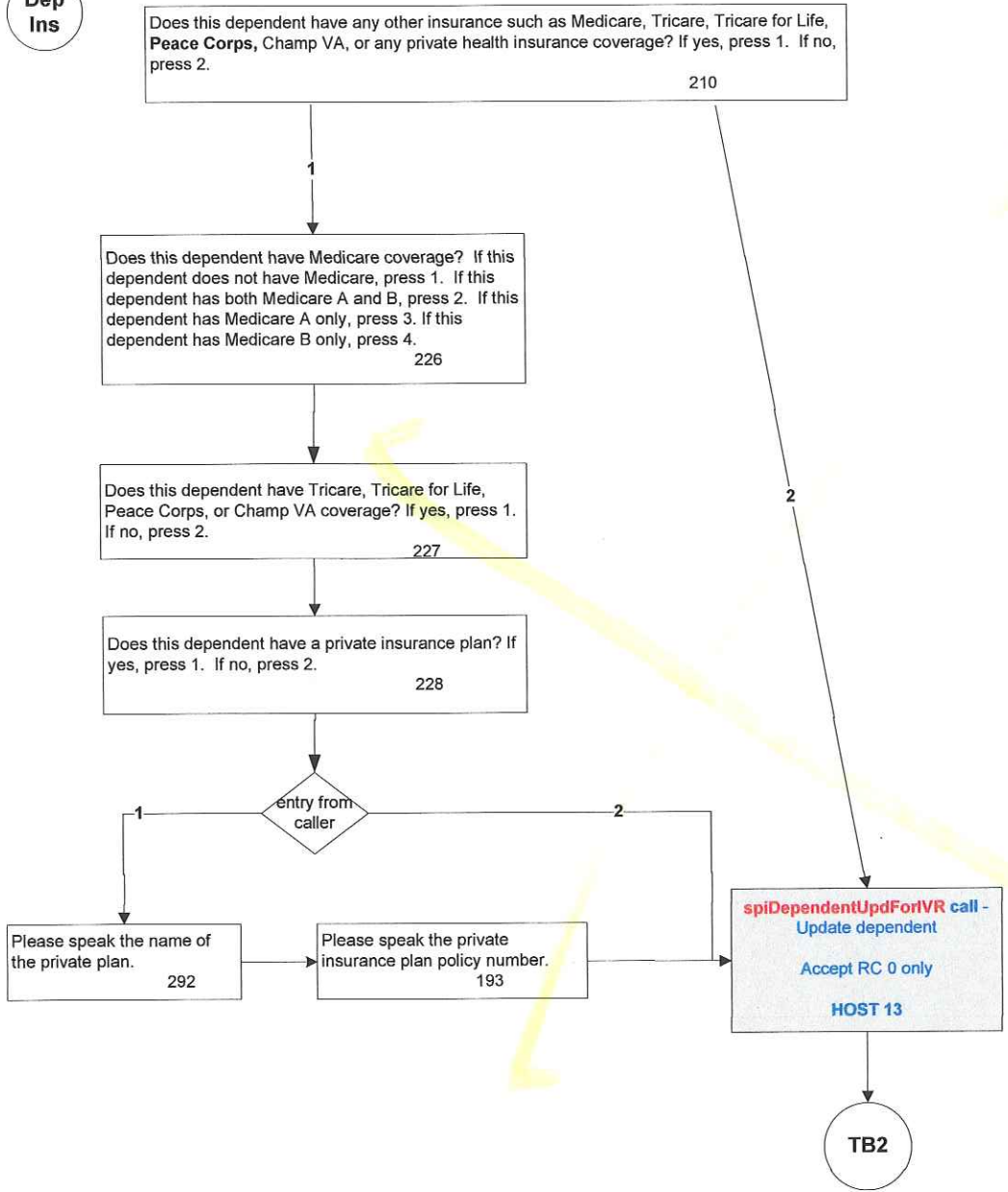
Transcription Box Other Insurance

Ins

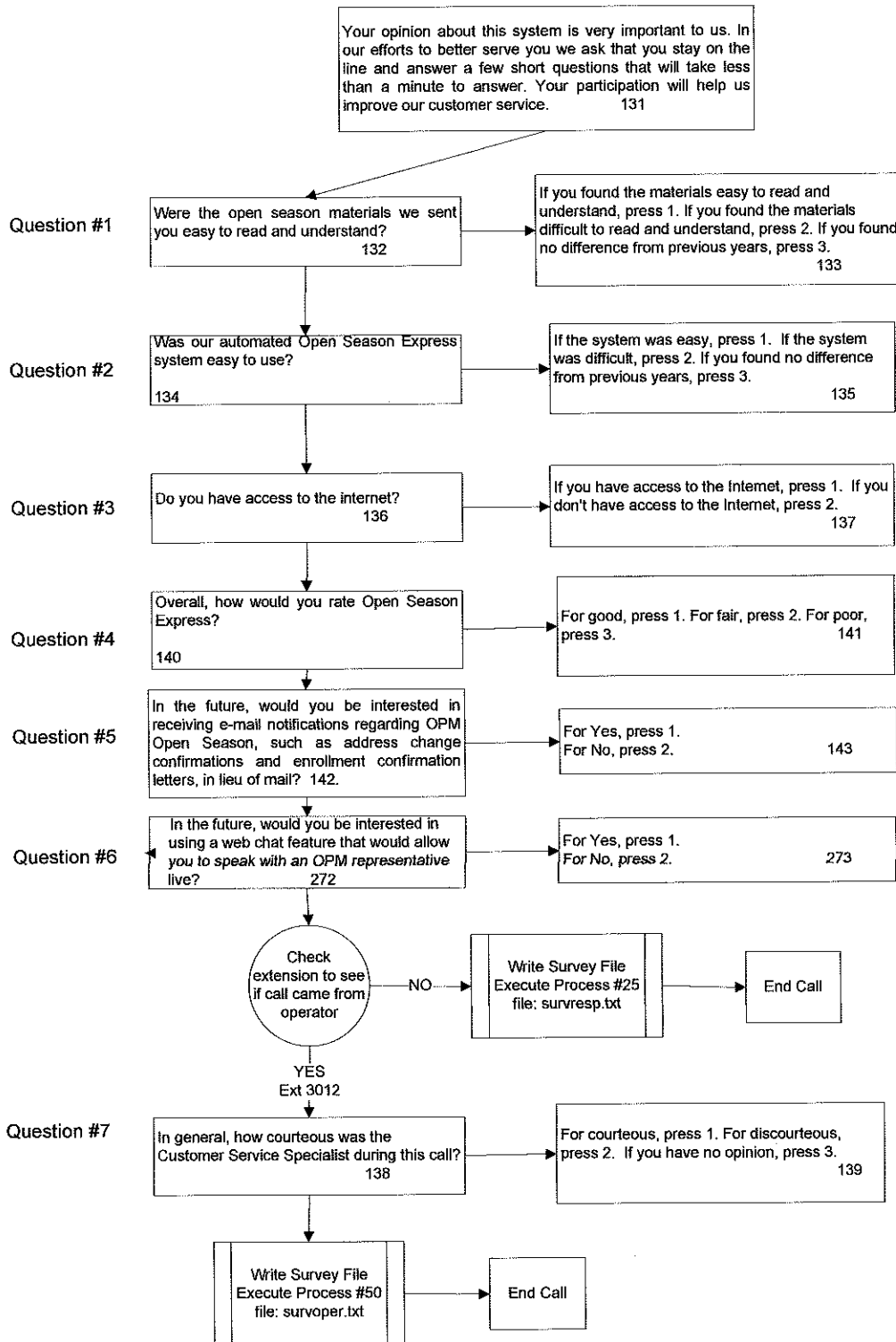


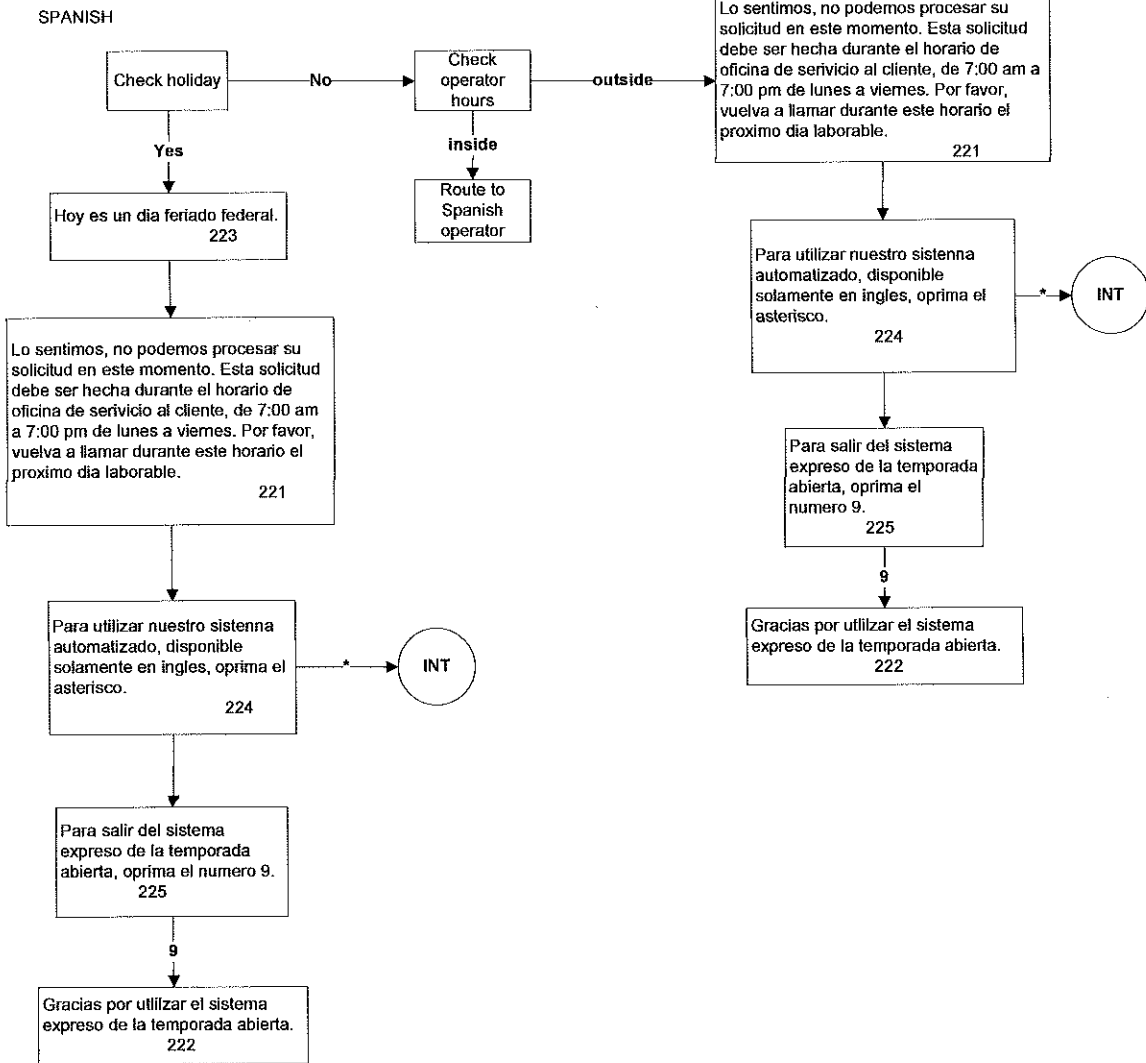
Transcription Box Dependent Other Insurance

Dep
Ins



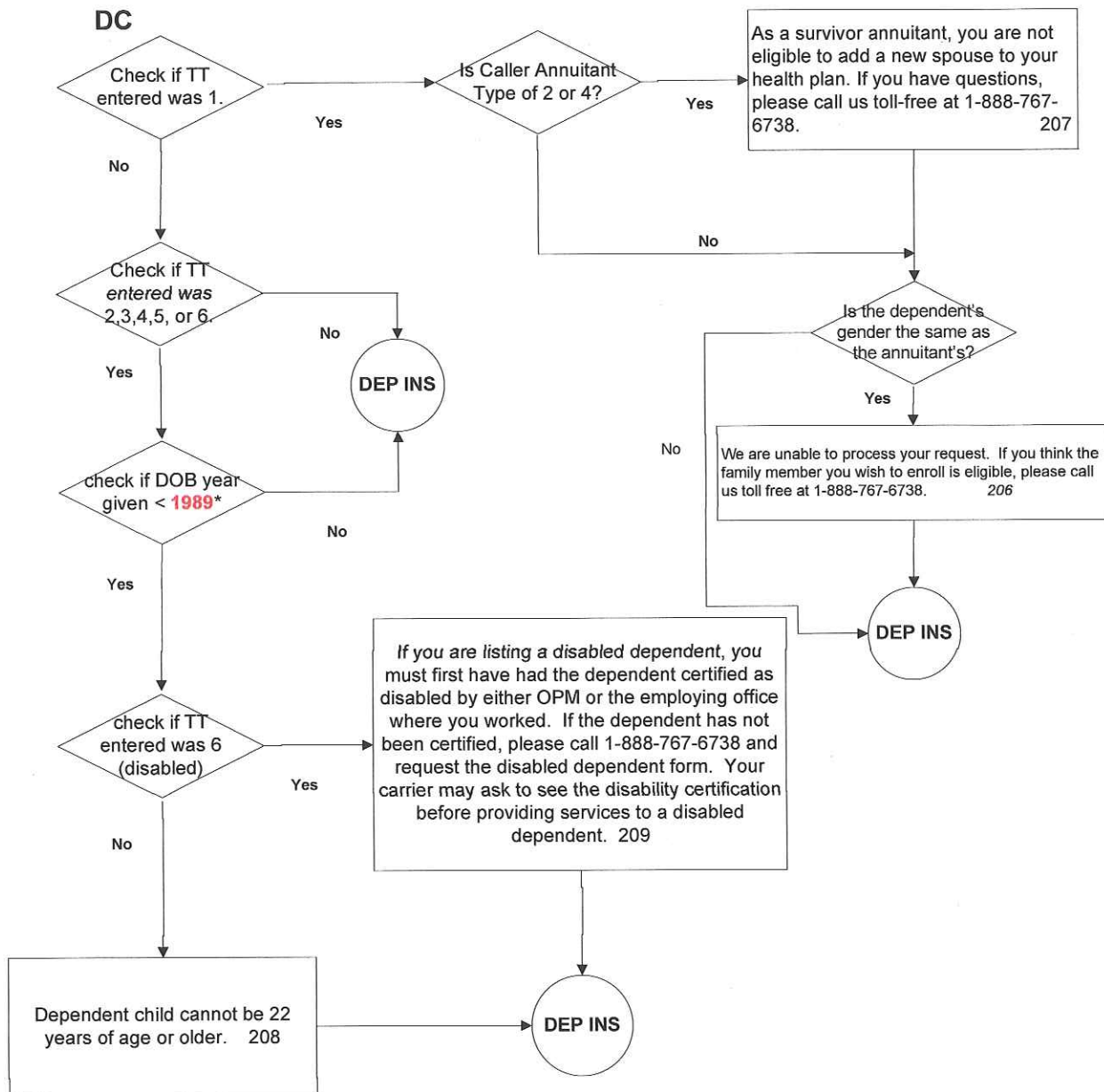
Survey Questions





DEPENDENT CHECKS

07/29/09



* Note: the application code uses current year to calculate the year checked against so that code modifications do not need to be made to accommodate the change each year.