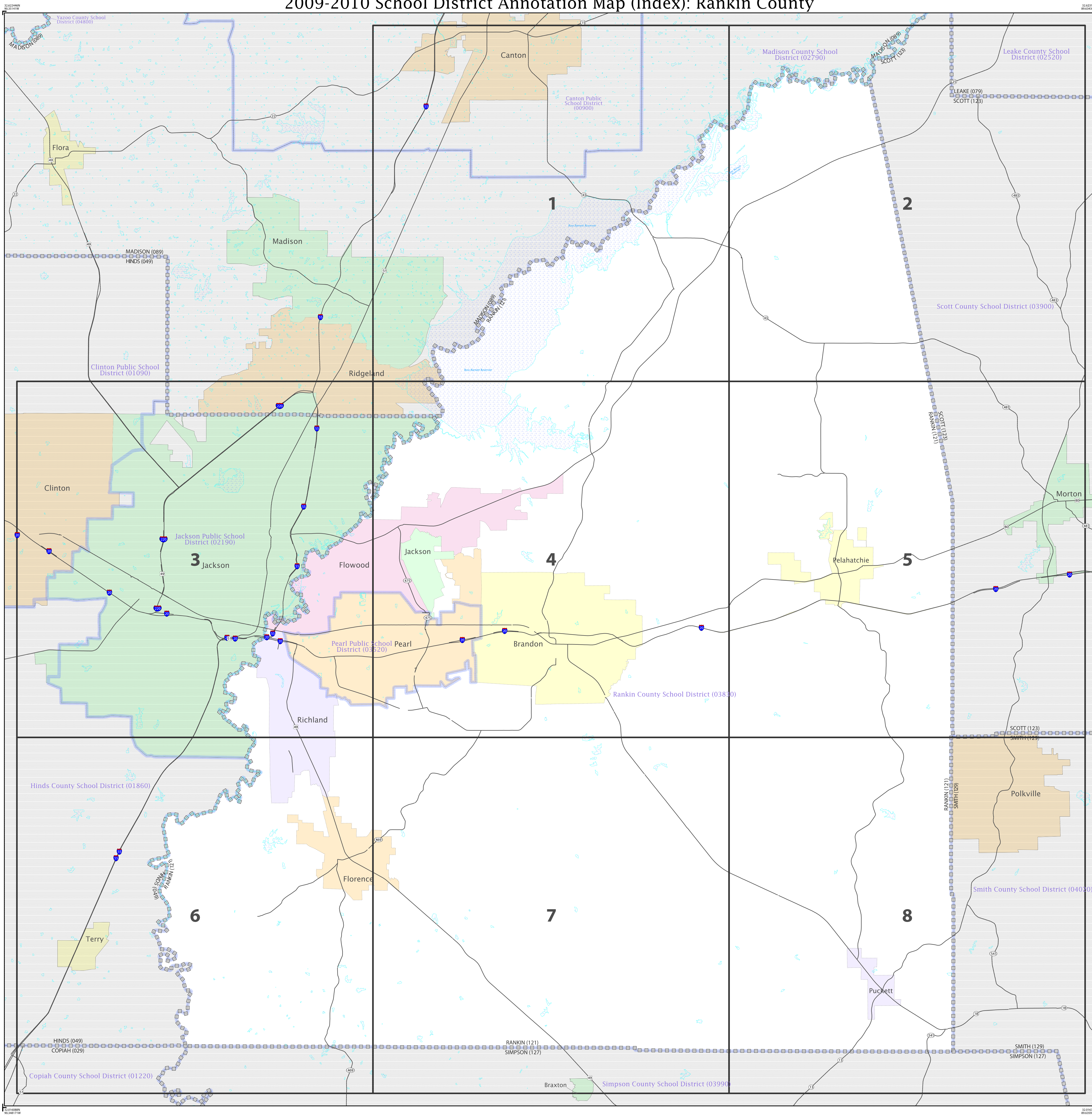


2009-2010 School District Annotation Map (Index): Rankin County



LEGEND

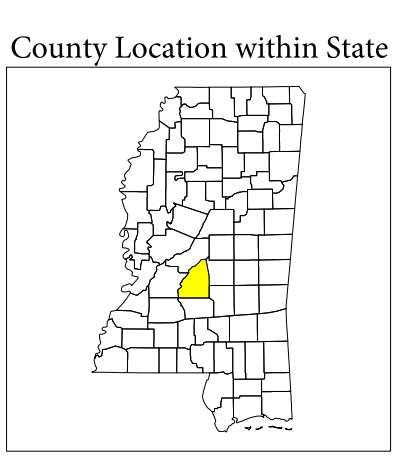
SYMBOL	NAME STYLE
	Elementary School District
	Secondary School District
	Unified School District
	AMERICAN INDIAN RESERVATION
	STATE
	COUNTY
	Minor Civil Division (MCD)
	Incorporated Place

FEATURES

	Interstate		Railroad		Notable Boundary
	US Highway		Powerline, Pipeline, or LTB		Stream
	State Highway		Ridge Line or Fence Line		Year-Belt
	Other Road		Cemetery		Golf Course
	Tail		National Park / Park		Military
	Inset		Out Area		Airport

Where state, county, and/or MCD boundaries coincide, the map shows the boundary symbol for only the highest-ranking of these boundaries.

CODE	UNIFIED SCHOOL DISTRICT NAME (MAP SHEET)
03300	Pearl Public School District (03520) (1, 4)
03830	Rankin County School District (03830) (1, 2, 3, 4, 5, 6, 7, 8)



TOTAL SHEETS: 9 (Index 1; Parent 8; Inset 0)
 ST: Mississippi (28)
 COU: Rankin (121)

All legal boundaries and names are as of January 1, 2009. The boundaries shown on this map are for Census Bureau statistical data collection and tabulation purposes only; their depiction and designation for statistical purposes does not constitute a determination of jurisdictional authority or rights of ownership or entitlement.
 Source: U.S. Census Bureau's MAI/TIGER database (ACS09)
 Created by Geography Division: July 18, 2009
 U.S. DEPARTMENT OF COMMERCE Economics and Statistics Administration U.S. Census Bureau

Projection: Albers Equal Area Conic
 Datum: NAD 83
 Spheroid: GRS 80
 1st Standard Parallel: 30 57 15
 2nd Standard Parallel: 34 11 14
 Central Meridian: 89 52 02
 Latitude of Projection's Origin: 30 08 45
 False Easting: 0
 False Northing: 0

