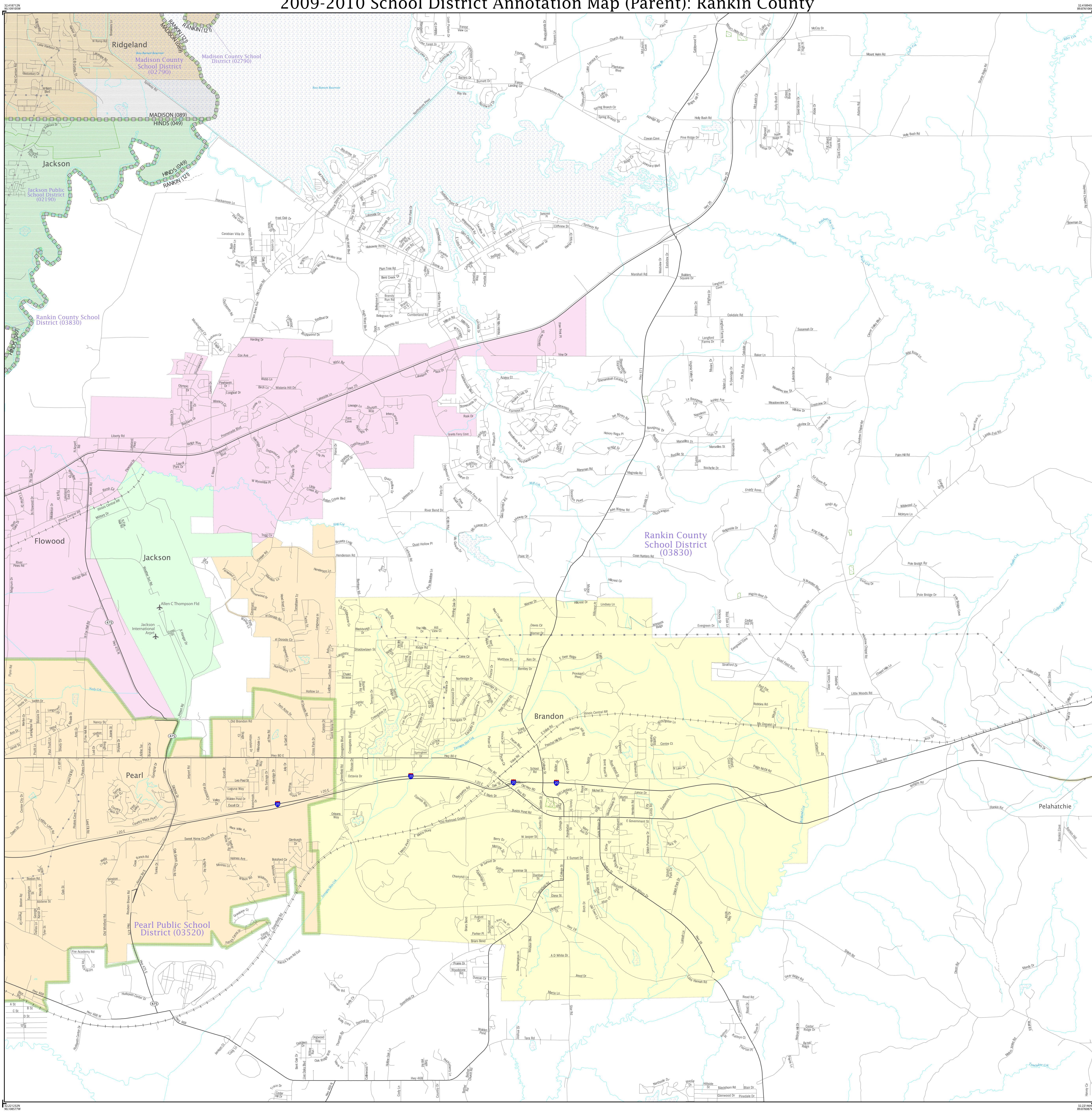


# 2009-2010 School District Annotation Map (Parent): Rankin County



### LEGEND

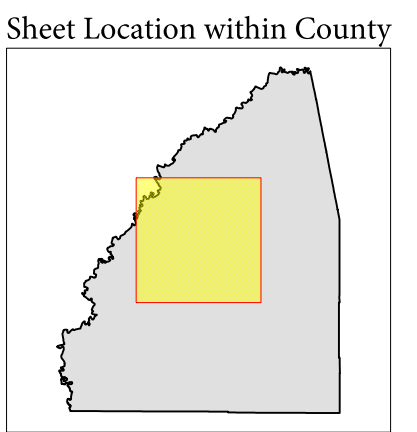
**SYMBOL**      **NAME STYLE**

- Elementary School District
- Secondary School District
- Unified School District
- AMERICAN INDIAN RESERVATION
- STATE
- COUNTY
- Minor Civil Division (MCD)
- Incorporated Place

**FEATURES**

- Interstate
- US Highway
- State Highway
- Other Road
- Trail
- Inset
- Railroad
- Powerline, Pipeline, or LTB
- Ridge Line or Fence Line
- Cemetery
- National Park / Park
- Out Area
- Non-tidal Boundary
- Stream
- Year-Slot
- Golf Course
- Military
- Airport

Where state, county, and/or MCD boundaries coincide, the map shows the boundary symbol for only the highest-ranking of these boundaries.



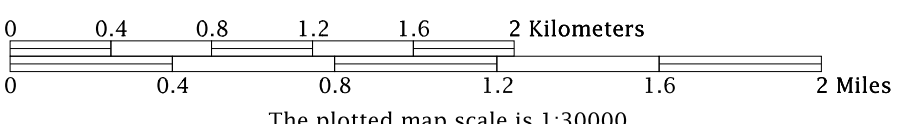
Key to Adjacent Sheets

	1	2
3	4	5
6	7	8

Sheet 4 of 8 PARENT sheets  
 Total Sheets: 9 (Index 1; Parent 8; Inset 0)  
 ST: Mississippi (28)  
 COU: Rankin (121)

All legal boundaries and names are as of January 1, 2009. The boundaries shown on this map are for Census Bureau statistical data collection and tabulation purposes only; their depiction and designation for statistical purposes does not constitute a determination of jurisdictional authority or rights of ownership or entitlement.  
 Source: U.S. Census Bureau's MAI/TIGER database (ACS09)  
 Created by Geography Division: July 18, 2009  
 U.S. DEPARTMENT OF COMMERCE Economics and Statistics Administration U.S. Census Bureau

Projection: Albers Equal Area Conic  
 Datum: NAD 83  
 Spheroid: GRS 80  
 1st Standard Parallel: 30 57 15  
 2nd Standard Parallel: 34 11 14  
 Central Meridian: 89 52 02  
 Latitude of Projection's Origin: 30 08 45  
 False Easting: 0  
 False Northing: 0



School district boundaries are as of January 1, 2008.