

# Chickens and Eggs

---

Released May 22, 2009, by the National Agricultural Statistics Service (NASS), Agricultural Statistics Board, U.S. Department of Agriculture. For information on "Layers and Eggs" call Kim Linonis at (202) 690-8632, for "Chicks Hatched" call Sharyn Lavender at (202) 720-3244, office hours 7:30 a.m. to 4:00 p.m. ET.

## April Egg Production Up 1 Percent

U.S. egg production totaled 7.46 billion during April 2009, up 1 percent from last year. Production included 6.41 billion table eggs, and 1.05 billion hatching eggs, of which 980 million were broiler-type and 71 million were egg-type. The total number of layers during April 2009 averaged 340 million, down slightly from last year. April egg production per 100 layers was 2,196 eggs, up 2 percent from April 2008.

All layers in the U.S. on May 1, 2009 totaled 339 million, down slightly from last year. The 339 million layers consisted of 282 million layers producing table or market type eggs, 53.9 million layers producing broiler-type hatching eggs, and 3.01 million layers producing egg-type hatching eggs. Rate of lay per day on May 1, 2009, averaged 72.4 eggs per 100 layers, up 1 percent from May 1, 2008.

## Egg-Type Chicks Hatched Down 4 Percent

Egg-type chicks hatched during April 2009 totaled 40.6 million, down 4 percent from April 2008. Eggs in incubators totaled 35.8 million on May 1, 2009, down 12 percent from a year ago.

Domestic placements of egg-type pullet chicks for future hatchery supply flocks by leading breeders totaled 307 thousand during April 2009, up 16 percent from April 2008.

## Broiler-Type Chicks Hatched Down 6 Percent

Broiler-type chicks hatched during April 2009 totaled 756 million, down 6 percent from April 2008. Eggs in incubators totaled 628 million on May 1, 2009, down 6 percent from a year earlier.

Leading breeders placed 6.16 million broiler-type pullet chicks for future domestic hatchery supply flocks during April 2009, down 13 percent from April 2008.

### *Special Note*

State level data for egg-type chicks hatched will no longer be published. U.S. numbers by month and cumulative totals will continue to be published.



**Contents**

**Page**

U.S. Average Number of Layers on Hand and Egg Production..... 1

U.S. Layers on Hand and Eggs Produced by Type, Forced Molt, and Pullets..... 3

Layers on Hand and Eggs Produced by State..... 5

Egg Production by Type and State ..... 7

Forced Molt ..... 9

U.S. Hatchery Production Summary ..... 10

Egg-Type Hatchery ..... 11

Egg-Type Intended Placements ..... 12

Broiler-Type Hatchery ..... 12

Broiler-Type Intended Placements ..... 14

Reliability of Chickens and Eggs Estimates..... 15

Regional Listing ..... 16

Terms and Definitions of Chickens and Eggs Estimates..... 16

Information Contacts..... 16

**All Layers: Average Number on Hand During the Month,  
United States, 2008-09**

Month	2008	2009
	<i>1,000 Layers</i>	<i>1,000 Layers</i>
Dec <sup>1</sup>	346,225	340,302
Jan	344,737	340,936
Feb	343,299	340,614
Mar <sup>2</sup>	342,017	340,455
Apr	340,838	339,640
May	340,116	
Jun	338,664	
Jul	336,276	
Aug	335,265	
Sep	334,489	
Oct	334,937	
Nov	337,995	

<sup>1</sup> December preceding year.

<sup>2</sup> Revised 2009 only.

**Eggs: Production During the Month by Type,  
United States, 2008-09**

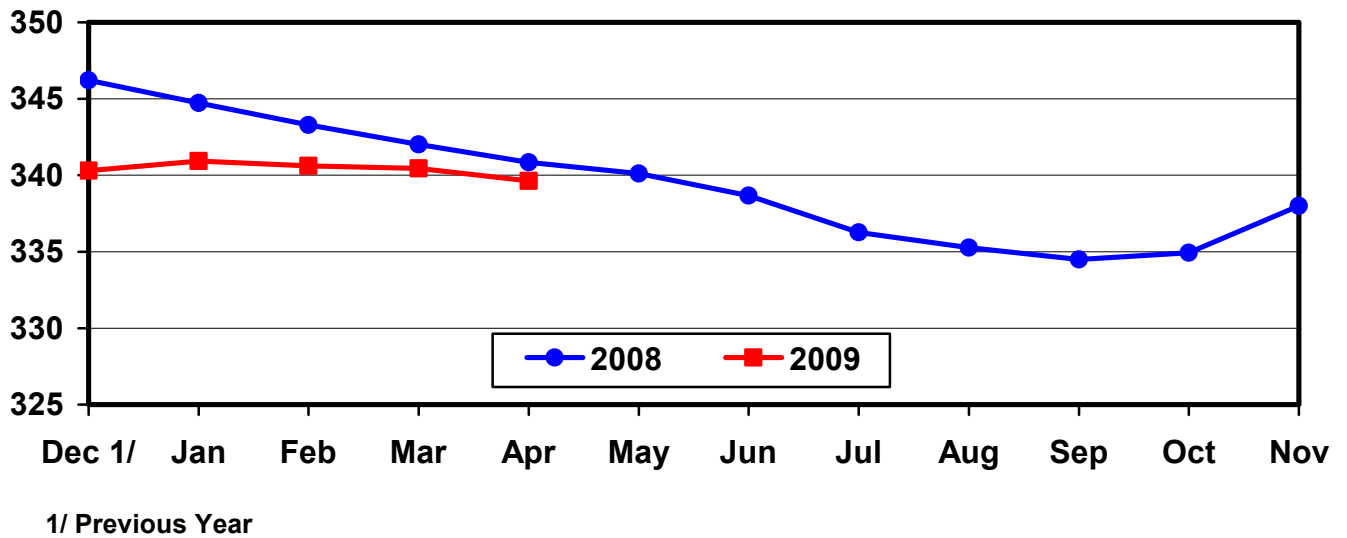
Month	Total Eggs <sup>1</sup>		Table Eggs		Hatching Eggs	
	2008	2009	2008	2009	2008	2009
	<i>Million Eggs</i>	<i>Million Eggs</i>	<i>Million Eggs</i>	<i>Million Eggs</i>	<i>Million Eggs</i>	<i>Million Eggs</i>
Dec <sup>2</sup>	7,808	7,768	6,666	6,701	1,143	1,068
Jan	7,646	7,666	6,498	6,591	1,149	1,075
Feb	7,114	6,892	6,034	5,906	1,080	985
Mar	7,675	7,724	6,517	6,632	1,159	1,093
Apr	7,373	7,459	6,256	6,408	1,117	1,051
May	7,564		6,409		1,155	
Jun	7,367		6,262		1,104	
Jul	7,599		6,474		1,125	
Aug	7,551		6,436		1,115	
Sep	7,339		6,272		1,067	
Oct	7,625		6,538		1,088	
Nov	7,490		6,446		1,044	
During Year <sup>1</sup>	90,151		76,811		13,346	

<sup>1</sup> Totals may not add due to rounding.

<sup>2</sup> December preceding year.

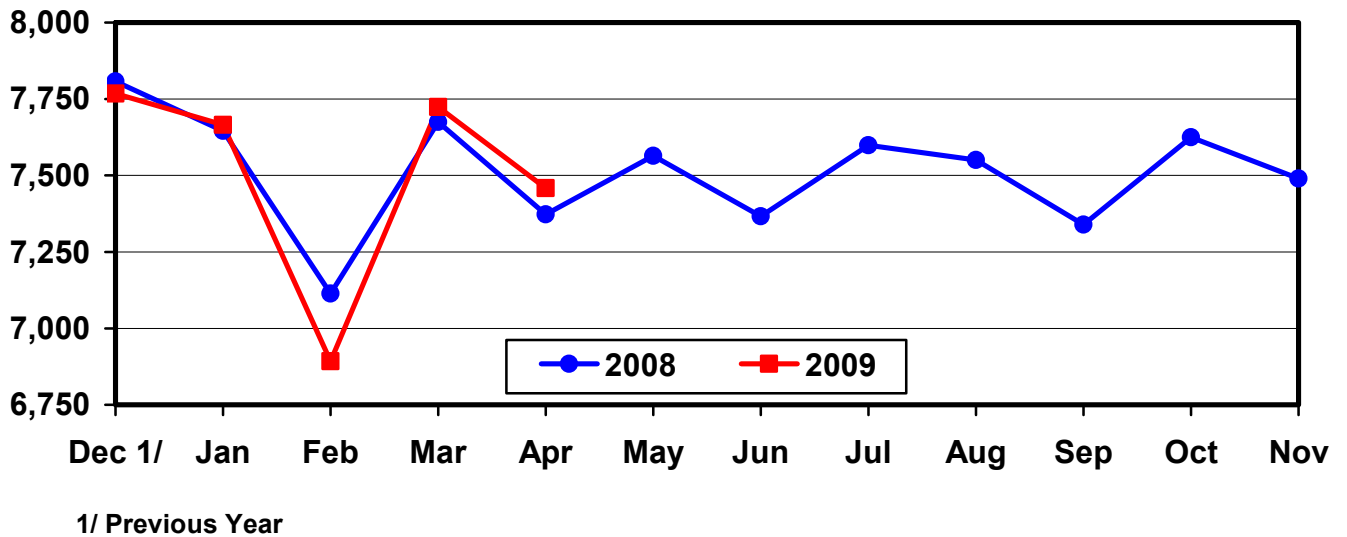
## U.S. Average Number of Layers During the Month

Million Layers



## U.S. All Egg Production During the Month

Million Eggs



**Layers and Eggs: Layers on Hand and Eggs Produced by Type,  
and Forced Molt, United States, March-April 2008-09**

Item	Unit	2008	2009 <sup>1</sup>	2009 as % of 2008
Layers During Mar <sup>2</sup>	1,000			
All Layers		342,017	340,455	100
Table Egg Type		281,182	283,072	101
Hatching Egg Type		60,835	57,383	94
Broiler-Type Hatching		57,942	54,309	94
Egg-Type Hatching		2,893	3,074	106
Eggs per 100 Layers During Mar	Number			
All Layers		2,244	2,269	101
Table Egg Type		2,318	2,343	101
Hatching Egg Type		1,905	1,905	100
Broiler-Type Hatching		1,883	1,874	100
Egg-Type Hatching		2,351	2,440	104
Eggs Produced During Mar <sup>2</sup>	Million			
All Layers		7,675	7,724	101
Table Egg Type		6,517	6,632	102
Hatching Egg Type		1,159	1,093	94
Broiler-Type Hatching		1,091	1,018	93
Egg-Type Hatching		68	75	110
Layers on Apr 1 <sup>2</sup>	1,000			
All Layers		341,320	340,604	100
Table Egg Type		280,664	283,188	101
Hatching Egg Type		60,656	57,416	95
Broiler-Type Hatching		57,761	54,346	94
Egg-Type Hatching		2,895	3,070	106
Eggs per 100 Layers on Apr 1	Number			
All Layers		72.4	73.9	102
Table Egg Type		74.8	76.5	102
Hatching Egg Type		61.2	61.1	100
Broiler-Type Hatching		60.4	60.1	100
Egg-Type Hatching		76.8	77.5	101
Forced Molt Layers on Apr 1	Percent			
Percent Being Molted		2.8	1.9	68
Percent with Molt Completed		21.3	21.7	102
Layers Sold for Slaughter During Mar	1,000	14,147	13,878	98
Layers Rendered, Died, Destroyed, Composted or Disappeared For Any Reason During Mar	1,000	8,029	7,527	94
Pullets on Apr 1	1,000	102,657	100,650	98
Pullets Added During Mar <sup>3</sup>	1,000	23,045	23,691	103

<sup>1</sup> Revised.

<sup>2</sup> Totals may not add due to rounding.

<sup>3</sup> Pullet chicks less than 3 days old added to pullet flocks.

**Layers and Eggs: Layers on Hand and Eggs Produced by Type,  
and Forced Molt, United States, April-May 2008-09**

Item	Unit	2008	2009	2009 as % of 2008
Layers During Apr <sup>1</sup>	1,000			
All Layers		340,838	339,640	100
Table Egg Type		279,937	282,456	101
Hatching Egg Type		60,901	57,184	94
Broiler-Type Hatching		58,006	54,142	93
Egg-Type Hatching		2,895	3,042	105
Eggs per 100 Layers During Apr	Number			
All Layers		2,163	2,196	102
Table Egg Type		2,235	2,269	102
Hatching Egg Type		1,834	1,838	100
Broiler-Type Hatching		1,810	1,810	100
Egg-Type Hatching		2,314	2,334	101
Eggs Produced During Apr <sup>1</sup>	Million			
All Layers		7,373	7,459	101
Table Egg Type		6,256	6,408	102
Hatching Egg Type		1,117	1,051	94
Broiler-Type Hatching		1,050	980	93
Egg-Type Hatching		67	71	106
Layers on May 1 <sup>1</sup>	1,000			
All Layers		340,318	338,638	100
Table Egg Type		279,191	281,706	101
Hatching Egg Type		61,127	56,932	93
Broiler-Type Hatching		58,240	53,922	93
Egg-Type Hatching		2,887	3,010	104
Eggs per 100 Layers on May 1	Number			
All Layers		71.8	72.4	101
Table Egg Type		74.1	74.6	101
Hatching Egg Type		61.1	61.3	100
Broiler-Type Hatching		60.3	60.3	100
Egg-Type Hatching		78.8	79.8	101
Forced Molt Layers on May 1	Percent			
Percent Being Molted		4.1	4.5	110
Percent with Molt Completed		20.8	20.5	99
Layers Sold for Slaughter During Apr	1,000	14,318	14,366	100
Layers Rendered, Died, Destroyed, Composted or Disappeared For Any Reason During Apr	1,000	7,643	8,255	108
Pullets on May 1	1,000	104,237	99,396	95
Pullets Added During Apr <sup>2</sup>	1,000	22,968	20,803	91

<sup>1</sup> Totals may not add due to rounding.

<sup>2</sup> Pullet chicks less than 3 days old added to pullet flocks.

**Layers and Eggs: Layers on Hand and Eggs Produced by State  
and United States, During March 2008-09**

State	Table Egg Layers in Flocks 30,000 and Above		All Layers		Eggs per 100 for All Layers	
	2008	2009 <sup>1</sup>	2008	2009 <sup>1</sup>	2008	2009
	<i>1,000</i>	<i>1,000</i>	<i>1,000</i>	<i>1,000</i>	<i>Number</i>	<i>Number</i>
AL	1,289	1,432	9,495	9,297	1,927	1,958
AR	3,789	3,522	13,881	12,792	1,967	1,986
CA	19,595	19,450	19,889	19,747	2,192	2,274
CO	3,351	3,404	3,895	3,854	2,465	2,543
CT	2,770	2,754	2,838	2,822	2,326	2,339
FL	10,260	9,628	10,697	9,989	2,272	2,222
GA	9,452	9,216	19,043	18,048	2,101	2,166
HI	328	310	352	337	1,847	1,751
IL	5,089	5,048	5,316	5,261	2,333	2,224
IN	23,722	23,507	24,415	24,315	2,306	2,311
IA	52,416	52,937	53,390	53,884	2,236	2,272
ME	4,141	3,450	4,204	3,531	2,307	2,181
MD	2,425	2,108	2,555	2,247	2,192	2,225
MI	9,025	9,666	9,189	9,830	2,459	2,411
MN	9,643	9,721	10,108	10,235	2,285	2,374
MS	1,617	1,484	6,267	6,042	2,026	2,085
MO	5,804	5,817	7,093	7,095	2,354	2,396
NE	9,691	9,697	9,741	9,747	2,392	2,360
NY	3,784	3,926	4,007	4,141	2,446	2,487
NC	4,869	5,304	12,666	12,504	2,108	2,127
OH	25,479	26,906	25,930	27,349	2,352	2,300
OR	2,428	2,290	2,573	2,433	2,565	2,630
PA	20,378	21,510	21,466	22,642	2,436	2,456
SC	3,419	2,979	4,711	4,276	2,080	2,198
SD	2,526	2,416	2,586	2,456	2,204	2,443
TX	14,106	13,777	18,918	18,323	2,252	2,265
VA	1,227	1,246	3,104	2,907	1,997	2,064
WA	5,494	6,007	5,563	6,122	2,355	2,369
WI	4,121	4,368	4,546	4,947	2,200	2,345
Oth Sts <sup>2</sup>	14,751	14,721	23,579	23,282	2,184	2,199
US	276,989	278,601	342,017	340,455	2,244	2,269

<sup>1</sup> Revised.

<sup>2</sup> Not published separately to avoid disclosing data for individual operations.



**Layers and Eggs: Layers on Hand and Eggs Produced by State  
and United States, During April 2008-09**

State	Table Egg Layers in Flocks 30,000 and Above		All Layers		Eggs per 100 for All Layers	
	2008	2009	2008	2009	2008	2009
	<i>1,000</i>	<i>1,000</i>	<i>1,000</i>	<i>1,000</i>	<i>Number</i>	<i>Number</i>
AL	1,256	1,398	9,438	9,260	1,865	1,890
AR	3,572	3,422	13,590	12,467	1,898	1,957
CA	20,131	19,476	20,423	19,774	2,081	2,190
CO	3,380	3,293	3,894	3,772	2,337	2,466
CT	2,846	2,819	2,911	2,884	2,302	2,323
FL	10,012	9,514	10,460	9,894	2,113	2,244
GA	9,106	9,042	18,673	17,779	2,008	2,081
HI	326	312	351	339	1,738	1,740
IL	5,166	5,112	5,393	5,302	2,169	2,263
IN	23,569	23,283	24,280	24,091	2,224	2,262
IA	52,783	52,811	53,727	53,742	2,196	2,207
ME	4,025	3,330	4,094	3,417	2,223	2,136
MD	2,500	2,024	2,646	2,173	2,116	2,071
MI	8,987	9,626	9,149	9,790	2,350	2,257
MN	9,648	9,753	10,142	10,250	2,218	2,244
MS	1,517	1,506	6,250	6,101	1,920	1,967
MO	5,801	5,780	7,101	7,064	2,281	2,336
NE	9,666	9,716	9,716	9,766	2,336	2,324
NY	3,718	3,881	3,941	4,096	2,411	2,441
NC	5,000	5,533	12,660	12,784	2,022	2,042
OH	25,184	26,846	25,640	27,293	2,293	2,224
OR	2,419	2,375	2,574	2,515	2,409	2,465
PA	20,101	21,559	21,210	22,699	2,348	2,383
SC	3,296	3,059	4,604	4,388	2,107	2,028
SD	2,463	2,332	2,523	2,372	2,180	2,277
TX	13,782	13,639	18,620	18,184	2,127	2,183
VA	1,228	1,151	3,143	2,886	1,941	2,010
WA	5,536	6,050	5,605	6,165	2,302	2,287
WI	4,002	4,420	4,436	5,005	2,074	2,298
Oth Sts <sup>1</sup>	14,723	14,923	23,644	23,388	2,081	2,104
US	275,743	277,985	340,838	339,640	2,163	2,196

<sup>1</sup> Not published separately to avoid disclosing data for individual operations.

**Egg Production: By Type, State, and United States,  
March 2008-09**

State	Total Production <sup>1</sup>		Table Eggs <sup>2</sup>		Hatching Eggs <sup>2</sup>	
	2008	2009	2008	2009	2008	2009
	<i>Million Eggs</i>	<i>Million Eggs</i>	<i>Million Eggs</i>	<i>Million Eggs</i>	<i>Million Eggs</i>	<i>Million Eggs</i>
AL	183	182	30	34	153	148
AR	273	254	88	84	185	170
CA	436	449				
CO	96	98				
CT	66	66				
FL	243	222	234	215	9	7
GA	400	391	216	222	184	169
HI	6.5	5.9	6.5	5.9	0	0
IL	124	117	120	114	4	3
IN	563	562	551	547	12	15
IA	1,194	1,224	1,177	1,208	17	16
ME	97	77				
MD	56	50	55	49	1	1
MI	226	237				
MN	231	243	223	234	8	9
MS	127	126	39	36	88	90
MO	167	170				
NE	233	230	233	230	0	0
NY	98	103				
NC	267	266	121	134	146	132
OH	610	629				
OR	66	64	64	62	2	2
PA	523	556	504	536	19	20
SC	98	94	76	72	22	22
SD	57	60	57	60	0	0
TX	426	415				
VA	62	60	28	31	34	29
WA	131	145				
WI	100	116				
Oth Sts <sup>3</sup>	515	512	370	374	146	139
US <sup>1</sup>	7,675	7,724	6,517	6,632	1,159	1,093

<sup>1</sup> Totals may not add due to rounding.

<sup>2</sup> Data by type of flock not shown for some States to avoid disclosing individual operations, data included in US totals.

<sup>3</sup> Not published separately to avoid disclosing data for individual operations.

**Egg Production: By Type, State, and United States,  
April 2008-09**

State	Total Production <sup>1</sup>		Table Eggs <sup>2</sup>		Hatching Eggs <sup>2</sup>	
	2008	2009	2008	2009	2008	2009
	<i>Million Eggs</i>	<i>Million Eggs</i>	<i>Million Eggs</i>	<i>Million Eggs</i>	<i>Million Eggs</i>	<i>Million Eggs</i>
AL	176	175	28	32	148	143
AR	258	244	80	83	178	161
CA	425	433				
CO	91	93				
CT	67	67				
FL	221	222	213	215	8	7
GA	375	370	198	209	177	161
HI	6.1	5.9	6.1	5.9	0	0
IL	117	120	114	117	3	3
IN	540	545	528	530	12	15
IA	1,180	1,186	1,164	1,171	16	15
ME	91	73				
MD	56	45	54	43	2	2
MI	215	221				
MN	225	230	217	222	8	8
MS	120	120	33	35	87	85
MO	162	165				
NE	227	227	227	227	0	0
NY	95	100				
NC	256	261	119	135	137	126
OH	588	607				
OR	62	62	60	60	2	2
PA	498	541	479	521	19	20
SC	97	89	75	67	22	22
SD	55	54	55	54	0	0
TX	396	397				
VA	61	58	27	28	34	30
WA	129	141				
WI	92	115				
Oth Sts <sup>3</sup>	492	492	351	360	141	132
US <sup>1</sup>	7,373	7,459	6,256	6,408	1,117	1,051

<sup>1</sup> Totals may not add due to rounding.

<sup>2</sup> Data by type of flock not shown for some States to avoid disclosing individual operations, data included in US totals.

<sup>3</sup> Not published separately to avoid disclosing data for individual operations.

**Forced Molt: Percent of All Layers by Month,  
United States, 2008-09**

Month	Percent Being Molted <sup>1</sup>		Percent with Molt Completed <sup>1</sup>	
	2008	2009	2008	2009
	<i>Percent</i>	<i>Percent</i>	<i>Percent</i>	<i>Percent</i>
Jan	3.0	3.2	22.7	21.2
Feb	3.9	3.4	21.7	21.4
Mar	2.4	3.4	22.1	21.4
Apr	2.8	1.9	21.3	21.7
May	4.1	4.5	20.8	20.5
Jun	3.7		20.9	
Jul	3.4		20.8	
Aug	3.9		21.2	
Sep	3.9		20.8	
Oct	3.7		21.9	
Nov	2.1		22.7	
Dec	1.9		22.1	

<sup>1</sup> As of first of month.

**Forced Molt: Percent of All Layers by State  
and United States, May 1, 2008-09**

State	Percent Being Molted <sup>1</sup>		Percent with Molt Completed <sup>1</sup>	
	2008	2009	2008	2009
	<i>Percent</i>	<i>Percent</i>	<i>Percent</i>	<i>Percent</i>
AL	0.5	1.5	4.5	5.5
AR	1.5	2.0	9.0	9.0
CA	7.5	7.5	29.5	26.0
CO	3.5	3.0	20.5	13.5
CT	0.0	0.0	11.0	15.0
FL	8.5	8.5	30.0	30.0
GA	4.5	5.0	8.5	10.0
HI	6.0	9.0	52.0	53.0
IL	5.0	1.5	24.5	35.0
IN	5.0	5.5	32.0	35.5
IA	4.0	3.5	35.0	34.0
ME	0.0	0.0	0.0	0.0
MD	10.0	3.5	14.0	19.0
MI	6.5	8.5	19.5	16.5
MN	1.5	5.0	28.5	23.5
MS	3.5	2.5	9.0	8.0
MO	3.0	4.0	15.5	11.5
NE	0.0	0.0	4.5	1.5
NY	1.0	0.0	5.5	6.5
NC	1.0	0.0	8.0	10.5
OH	4.5	6.0	12.5	18.0
OR	8.0	10.0	25.5	28.0
PA	3.0	3.5	12.0	11.0
SC	2.5	6.5	26.0	14.5
SD	5.0	7.0	18.0	33.5
TX	5.0	5.5	24.0	19.0
VA	9.0	3.0	19.5	9.0
WA	7.5	9.5	31.0	29.5
WI	5.0	7.0	33.5	25.5
Oth Sts <sup>2</sup>	4.3	5.1	19.2	19.5
US	4.1	4.5	20.8	20.5

<sup>1</sup> As of first of month.

<sup>2</sup> Not published separately to avoid disclosing data for individual operations.

**Hatchery Production: Eggs in Incubators, Chicks Hatched,  
and Placements by Type, United States, April-May 2008-09**

Item	2008	2009	2009 as % of 2008
	<i>1,000</i>	<i>1,000</i>	<i>Percent</i>
Egg-Type			
Eggs in Incubators on May 1	40,422	35,766	88
Chicks Hatched During Apr	42,329	40,621	96
Chicks Hatched Jan thru Apr	163,073	155,702	95
Pullets Hatched During Apr for Intended Placements in Hatchery Supply Flocks	264	307	116
7-18 Months Earlier <sup>1</sup>	2,905	2,879	99
Broiler-Type			
Eggs in Incubators on May 1	668,011	628,222	94
Chicks Hatched During Apr	801,548	755,862	94
Chicks Hatched Jan thru Apr	3,239,745	3,018,524	93
Pullets Hatched During Apr for Intended Placements in Hatchery Supply Flocks	7,119	6,158	87
7-15 Months Earlier <sup>2</sup>	65,567	65,173	99

<sup>1</sup> 2009 includes pullet chicks hatched Oct 2007 through Sep 2008.

<sup>2</sup> 2009 includes pullet chicks hatched Jan 2008 through Sep 2008.

**Egg-Type Eggs in Incubators: By Region and United States,  
May 1, 2008-09**

Region	2008	2009	2009 as % of 2008
	<i>1,000</i>	<i>1,000</i>	<i>Percent</i>
North Atlantic	5,470	5,440	99
E North Central	8,474	7,351	87
W North Central	10,062	9,177	91
South Atlantic	4,958	3,663	74
South Central	6,264	6,344	101
West	5,194	3,791	73
US	40,422	35,766	88

**Egg-Type Chicks Hatched: By Month, United States, 2008-09**

Month	By Months			Cumulative		
	2008	2009	2009 as % of 2008	2008	2009	2009 as % of 2008
	<i>1,000</i>	<i>1,000</i>	<i>Percent</i>	<i>1,000</i>	<i>1,000</i>	<i>Percent</i>
Jan	40,256	38,083	95	40,256	38,083	95
Feb	38,534	36,861	96	78,790	74,944	95
Mar	41,954	40,137	96	120,744	115,081	95
Apr	42,329	40,621	96	163,073	155,702	95
May	41,826			204,899		
Jun	40,928			245,827		
Jul	37,250			283,077		
Aug	35,578			318,655		
Sep	37,111			355,766		
Oct	40,198			395,964		
Nov	34,187			430,151		
Dec	37,091			467,242		

**Intended Placements: Egg-Type Pullet Chicks for Hatchery Supply  
Flocks by Month and Total, United States, 2008-09**

Month	Pullet Chicks Hatched		2009 as % of 2008	Cumulative Potential Plcmts Relative to Current Supply Flocks 7-18 Months Earlier <sup>1</sup>	
	2008	2009		2008	2009
	<i>1,000</i>	<i>1,000</i>	<i>Percent</i>	<i>1,000</i>	<i>1,000</i>
Jan	198	240	121	3,007	2,907
Feb	271	256	94	2,871	2,968
Mar	245	277	113	2,865	2,969
Apr	264	307	116	2,905	2,879
May	227			2,867	2,968
Jun	231			2,942	3,004
Jul	244			2,982	2,958
Aug	279			2,915	3,000
Sep	210			3,021	2,985
Oct	273			2,950	3,017
Nov	317			2,940	3,060
Dec	199			2,976	
Total	2,958				

<sup>1</sup> For April 2009, includes breeder pullet chicks hatched Oct 2007 through Sep 2008. The 7-18 months represent the first laying cycle. Molting and additional laying cycles will increase the cumulative potential placements.

**Broiler-Type Eggs in Incubators: By Region  
and United States, May 1, 2008-09**

Region	2008	2009	2009 as % of 2008
	<i>1,000</i>	<i>1,000</i>	<i>Percent</i>
North Atlantic	12,914	11,855	92
E North Central	12,425	13,137	106
W North Central	29,380	28,925	98
South Atlantic	243,621	231,900	95
South Central	344,261	317,519	92
West	25,410	24,886	98
US	668,011	628,222	94

**Broiler-Type Chicks Hatched: By State  
and United States, April 2008-09**

State	During April			Jan-Apr		
	2008	2009	2009 as % of 2008	2008	2009	2009 as % of 2008
	<i>1,000</i>	<i>1,000</i>	<i>Percent</i>	<i>1,000</i>	<i>1,000</i>	<i>Percent</i>
AL	115,920	108,004	93	467,432	424,870	91
AR	97,978	84,912	87	403,174	349,352	87
DE	14,257	12,727	89	57,336	49,387	86
FL	5,038	3,476	69	20,050	14,395	72
GA	120,937	112,662	93	494,919	461,778	93
KY	28,151	27,640	98	110,592	108,046	98
LA	13,516	8,132	60	55,686	44,501	80
MD	32,386	32,228	100	130,081	126,005	97
MS	69,021	65,364	95	275,506	256,666	93
NC	70,165	68,415	98	283,932	270,668	95
OK	24,762	25,096	101	100,302	96,546	96
PA	15,172	13,437	89	60,077	55,149	92
SC	19,423	19,824	102	78,244	78,194	100
TX	55,734	55,933	100	225,647	223,100	99
VA	22,677	22,205	98	90,439	85,410	94
CA, MO, TN, & WV	72,227	70,720	98	286,689	278,248	97
19 Sts <sup>1</sup>	777,364	730,775	94	3,140,106	2,922,315	93
Oth Sts <sup>2</sup>	24,184	25,087	104	99,639	96,209	97
US	801,548	755,862	94	3,239,745	3,018,524	93

<sup>1</sup> States in the weekly hatchery production estimating program.

<sup>2</sup> Not published separately to avoid disclosing data for individual operations.

**Broiler-Type Chicks Hatched: By Month, United States, 2008-09**

Month	By Months			Cumulative		
	2008	2009	2009 as % of 2008	2008	2009	2009 as % of 2008
	<i>1,000</i>	<i>1,000</i>	<i>Percent</i>	<i>1,000</i>	<i>1,000</i>	<i>Percent</i>
Jan	826,027	778,401	94	826,027	778,401	94
Feb	775,280	700,913	90	1,601,307	1,479,314	92
Mar	836,890	783,348	94	2,438,197	2,262,662	93
Apr	801,548	755,862	94	3,239,745	3,018,524	93
May	825,323			4,065,068		
Jun	805,793			4,870,861		
Jul	805,182			5,676,043		
Aug	799,059			6,475,102		
Sep	755,235			7,230,337		
Oct	740,964			7,971,301		
Nov	705,312			8,676,613		
Dec	779,304			9,455,917		



**Intended Placements: Broiler-Type Pullet Chicks for Hatchery  
Supply Flocks by Month and Total, 2008-09**

Month	Pullet Chicks Hatched		2009 as % of 2008	Cumulative Potential Plcmts Relative to Current Supply Flocks 7-15 Months Earlier <sup>1</sup>	
	2008	2009		2008	2009
	<i>1,000</i>	<i>1,000</i>	<i>Percent</i>	<i>1,000</i>	<i>1,000</i>
US Place- ments					
Jan	7,012	7,142	102	65,333	65,952
Feb	7,536	7,215	96	65,223	65,444
Mar <sup>2</sup>	7,090	6,773	96	65,397	65,535
Apr	7,119	6,158	87	65,567	65,173
May	8,217			65,522	65,203
Jun	7,154			66,057	64,693
Jul	6,462			66,170	64,183
Aug	7,697			66,490	64,206
Sep	6,886			65,943	63,204
Oct	7,042			65,234	62,823
Nov	7,026			65,719	62,519
Dec	6,580			66,144	
Annual Total	85,821				
Total Place- ments <sup>3</sup>					
Jan	8,706	8,410	97		
Feb	9,498	8,524	90		
Mar <sup>4</sup>	9,245	8,626	93		
Apr	8,720	7,664	88		
May	10,089				
Jun	9,228				
Jul	8,017				
Aug	9,603				
Sep	8,651				
Oct	8,361				
Nov	8,704				
Dec	8,197				
Annual Total	107,019				

<sup>1</sup> For Apr 2009, includes breeder pullet chicks hatched Jan 2008 through Sep 2008.

<sup>2</sup> Revised 2009 pullet chicks hatched and cumulative placements for October 2009.

<sup>3</sup> U.S. production of intended placements worldwide.

<sup>4</sup> Revised 2009 only.

## Reliability of Chickens and Eggs Estimates

**Survey Procedures:** Primary data for the "**Chickens and Eggs**" report are from weekly and/or monthly questionnaires sent to producers. An attempt is made to collect information for layer and egg estimates from each known contractor and independent producer who has at least 30,000 table egg layers, flocks of hatchery supply layers, or pullet only operations with at least 500 pullets. Coverage for operations with less than 30,000 table egg layers are estimated each month based on data reported in December. Approximately 650 contractors, independent egg producers, and pullet only operations are contacted each month. All known hatcheries, approximately 300, are contacted for information on a weekly and/or monthly basis.

**Estimating Procedures:** Sound statistical methodology is employed to derive estimates from the reported data. All data are analyzed for unusual values. Data from each operation are compared to their own past operating profile and to trends from similar operations. Data for missing operations are estimated based on similar operations or historical data. NASS field offices prepare these estimates by using a combination of survey indications and historic trends. Individual State estimates are reviewed by the Agricultural Statistics Board for reasonableness. Individual hatchery data are summed to State, regional, and U.S. totals.

For chicken hatcheries, chicks hatched consist of all chicks of domesticated breeds including males and chicks destined for hatchery supply flocks and research purposes. Eggs set are eggs in incubators for the purpose of hatching. The relationship of egg-type chicks hatched to chicken inventory and poultry marketings are carefully monitored. The disposition of egg-type chicks hatched prior to placement into the laying flock can vary significantly, which can make comparisons to changes in layer inventory inconsistent over time. Broiler chicks placed are specifically placed on feed for meat production. Intended placement data reported by leading breeders include pullet chicks expected from eggs sold the preceding month. The breeders in this report account for a large percentage of replacement pullets for hatchery supply flocks. Production of replacement pullets by these breeders indicates the number of pullets available to hatchery supply layer flocks several months before the pullets will actually move into the laying flocks. "Hatchery Supply Flocks" include all generations of layers which could lay eggs to supply a hatchery. This includes the generations of parents, grandparents, great-grandparents, pedigree, etc. Also included are research flocks, vaccine flocks, and specific pathogen-free flocks. The broiler cumulative potential placements are a moving total of the intended placements 7-15 months earlier. The egg-type cumulative potential placements of 7-18 months earlier represent the first laying cycle. Molting and additional laying cycles will increase the cumulative potential placements of egg-type hatching flocks.

**Revision Policy:** The previous month's estimates are subject to revision if late reports or corrected data indicates a different level. Additionally, revisions after the monthly report will be made at the end of the marketing year and published in the annual reports of "**Chickens and Eggs Summary**" and "**Hatchery Production**".

**Reliability:** Estimates are based on a census of all known contractors and independent producers who have at least 30,000 table egg layers, flocks of hatchery supply layers, pullet only operations with at least 500 pullets, or operating hatcheries and therefore, have no sampling error. However, estimates are subject to errors such as omission, duplication, and mistakes in reporting, recording, and processing the data. While these errors cannot be measured directly, they are minimized through strict quality controls in the data collection process and a careful review of all reported data for consistency and reasonableness.

To assist in evaluating the reliability of the estimates in this report, the "Root Mean Square Error" is shown for selected items in the following table. The "Root Mean Square Error" is a statistical measure based on past performance and is computed using the differences between first and final estimates. The "Root Mean Square Error" for all layers over the past 24 months is 0.9 percent. This means that chances are 2 out of 3 that the final estimate will not be above or below the current estimate of 340 million layers by more than 0.9 percent. Chances are 9 out of 10 that the difference will not exceed 1.7 percent.

**Reliability of Layer and Egg Estimates**

Item	Root Mean Square Error	90 Percent Confidence Level		Difference Between First and Latest Estimates			Number of Months	
				Average	Smallest	Largest	First Above Latest	First Below Latest
All Layers	<i>Percent</i> 0.9	<i>Percent</i> 1.7	<i>1,000</i> 57	<i>1,000</i> 1,382	<i>1,000</i> 4	<i>1,000</i> 3,947	<i>Number</i> 9	<i>Number</i> 15
Eggs	0.6	1.1	<i>Million Eggs</i> 1	<i>Million Eggs</i> 31	<i>Million Eggs</i> 0	<i>Million Eggs</i> 86	9	13

**Regional Listing**

North Atlantic: CT, ME, MA, NH, NJ, NY, PA, RI, VT.

East North Central: IL, IN, MI, OH, WI.

West North Central: IA, KS, MN, MO, NE, ND, SD.

South Atlantic: DE, FL, GA, MD, NC, SC, VA, WV.

South Central: AL, AR, KY, LA, MS, OK, TN, TX.

West: AK, AZ, CA, CO, HI, ID, MT, NM, NV, OR, UT, WA, WY.

**Terms and Definitions of Chickens and Eggs Estimates**

**All Layers** includes both table egg and hatching egg flocks regardless of size.

**Intended Placements** are reported by leading breeders. Coverage may not be 100 percent. Includes expected pullet chicks from eggs sold during the preceding month at the rate of 125 pullet chicks per case of 30 dozen eggs.

**Information Contacts**

Listed below are the commodity specialists in the Livestock Branch of the National Agricultural Statistics Service to contact for additional information.

- Dan Kerestes, Chief, Livestock Branch .....(202) 720-3570
- Bruce Boess, Head, Poultry and Specialty Commodities Section.....(202) 720-4447
- David Colwell - Cold Storage .....(202) 720-8784
- Chris Hawthorn - Catfish Processing, Catfish Production, Trout Production,  
Census of Aquaculture, Egg Products, Mink .....(202) 720-0585
- Sharyn Lavender - Broiler Hatchery, Chicken Hatchery, Honey .....(202) 720-3244
- Kim Linonis - Layers, Eggs .....(202) 690-8632
- Troy Marshall - Poultry Slaughter, Turkey Hatchery, Turkeys Raised.....(202) 690-3237

## ACCESS TO REPORTS!!

---

For your convenience, there are several ways to obtain NASS reports, data products, and services:

### INTERNET ACCESS

All NASS reports are available free of charge. For free access, connect to the Internet and go to the NASS Home Page at: [www.nass.usda.gov](http://www.nass.usda.gov).

### E-MAIL SUBSCRIPTION

All NASS reports are available by subscription free of charge direct to your e-mail address. Starting with the NASS Home Page at [www.nass.usda.gov](http://www.nass.usda.gov), under the right navigation, *Receive reports by Email*, click on **National** or **State**. Follow the instructions on the screen.

-----

### PRINTED REPORTS OR DATA PRODUCTS

**CALL OUR TOLL-FREE ORDER DESK: 800-999-6779 (U.S. and Canada)**  
**Other areas, please call 703-605-6220      FAX: 703-605-6900**  
**(Visa, MasterCard, check, or money order acceptable for payment.)**

-----

### ASSISTANCE

For **assistance** with general agricultural statistics or further information about NASS or its products or services, contact the **Agricultural Statistics Hotline** at **800-727-9540**, 7:30 a.m. to 4:00 p.m. ET, or e-mail: [nass@nass.usda.gov](mailto:nass@nass.usda.gov).

The U.S. Department of Agriculture (USDA) prohibits discrimination in all its programs and activities on the basis of race, color, national origin, age, disability, and where applicable, sex, marital status, familial status, parental status, religion, sexual orientation, genetic information, political beliefs, reprisal, or because all or a part of an individual's income is derived from any public assistance program. (Not all prohibited bases apply to all programs.) Persons with disabilities who require alternative means for communication of program information (Braille, large print, audiotape, etc.) should contact USDA's TARGET Center at (202) 720-2600 (voice and TDD).

To file a complaint of discrimination, write to USDA, Director, Office of Civil Rights, 1400 Independence Avenue, S.W., Washington, D.C. 20250-9410, or call (800) 795-3272 (voice) or (202) 720-6382 (TDD). USDA is an equal opportunity provider and employer.