



# TRAFFIC SAFETY FACTS

## 2010 Data

DOT HS 811 630

June 2012

## Overview

Motor vehicle travel is the primary means of transportation in the United States, providing an unprecedented degree of mobility. Yet for all its advantages, injuries resulting from motor vehicle crashes are the leading cause of death for age 4 and every age 11 through 27 (based on 2009 data). The mission of the National Highway Traffic Safety Administration is to reduce deaths, injuries, and economic losses from motor vehicle crashes.

In 2010, 32,885 people were killed in the estimated 5,419,000 police-reported motor vehicle traffic crashes; 2,239,000 people were injured; and 3,847,000 crashes involved property damage only. Compared to 2009, this is a 3-percent decrease in the number of fatalities, and a 2-percent decrease in the number of police-reported motor vehicle traffic crashes, 1-percent increase in the number of people injured, and 3-percent decrease in crashes involving property damage.

An average of 90 people died each day in motor vehicle crashes in 2010—one every 16 minutes.

Fortunately, much progress has been made in reducing the number of deaths and injuries on our Nation's highways. In 2010, the fatality rate per 100 million vehicle miles of travel (VMT) fell to an historic low of 1.11. The 2001 rate was 1.51 per 100 million VMT. The National Occupant Protection Use Survey (NOPUS) reported an 85-percent seat belt use rate nationwide for 2010. Data show a decrease in the number of fatalities in alcohol-impaired-driving crashes—from 13,290 in 2001 to 10,228 in 2010. Fatalities in alcohol-impaired-driving crashes when compared to the previous year (2009) decreased by 4.9 percent from 10,759 to 10,228.

This overview fact sheet contains statistics on motor vehicle fatalities based on data from the Fatality Analysis Reporting System (FARS). FARS is a census of fatal crashes within the 50 States, the District of Columbia, and Puerto Rico (although Puerto Rico is not included in U.S. totals). Crash and injury statistics are based on data from the National Automotive Sampling System General Estimates System (GES). GES is a probability-based sample of police-reported crashes, from 60 locations across the country, from which estimates of national totals for injury and property-damage-only crashes are derived.

The following terms will be used to define motorcycle occupants: a motorcycle rider is the operator only; a passenger is any person seated on the motorcycle but not in control of the motorcycle; and any combined reference to the "motorcycle rider" (operator) as well as the "passenger" will be referred to as motorcyclists. NHTSA publications prior to 2007 may not reflect this terminology.

*In 2010, there were an estimated 5,419,000 police-reported traffic crashes, in which 32,885 people were killed and 2,239,000 people were injured; 3,847,000 crashes involved property damage only.*

*An average of 90 people died each day in motor vehicle crashes in 2010—an average of one every 16 minutes.*

Table 1  
**People Killed and Injured and Fatality and Injury Rates, 2001-2010**

Year	Killed	Resident Population (Thousands)	Fatality Rate per 100,000 Population	Licensed Drivers (Thousands)	Fatality Rate per 100,000 Licensed Drivers	Registered Motor Vehicles (Thousands)	Fatality Rate per 100,000 Registered Vehicles	Vehicle Miles Traveled (Billions)	Fatality Rate per 100 Million VMT
<b>Killed</b>									
2001	42,196	284,969	14.81	191,276	22.06	221,230	19.07	2,796	1.51
2002	43,005	287,625	14.95	194,602	22.10	225,685	19.06	2,856	1.51
2003	42,884	290,108	14.78	196,166	21.86	230,633	18.59	2,890	1.48
2004	42,836	292,805	14.63	198,889	21.54	237,949	18.00	2,965	1.44
2005	43,510	295,517	14.72	200,549	21.70	245,628	17.71	2,989	1.46
2006	42,708	298,380	14.31	202,810	21.06	251,415	16.99	3,014	1.42
2007	41,259	301,231	13.70	205,742	20.05	257,472	16.02	3,031	1.36
2008	37,423	304,094	12.31	208,321	17.96	259,360	14.43	2,977	1.26
2009	33,883	306,772	11.05	209,618	16.16	258,958	13.08	2,957	1.15
2010	32,885	309,350	10.63	210,115	15.65	260,252	12.64	2,967	1.11
Year	Injured	Resident Population (Thousands)	Injury Rate per 100,000 population	Licensed Drivers (Thousands)	Injury Rate per 100,000 Licensed Drivers	Registered Motor Vehicles (Thousands)	Injury Rate per 100,000 Registered Vehicles	Vehicle Miles Traveled (Billions)	Injury Rate per 100 Million VMT
<b>Injured</b>									
2001	3,033,000	284,969	1,064	191,276	1,585	221,230	1,371	2,796	108
2002	2,926,000	287,625	1,017	194,602	1,503	225,685	1,296	2,856	102
2003	2,889,000	290,108	996	196,166	1,473	230,633	1,252	2,890	100
2004	2,788,000	292,805	952	198,889	1,402	237,949	1,172	2,965	94
2005	2,699,000	295,517	913	200,549	1,346	245,628	1,099	2,989	90
2006	2,575,000	298,380	863	202,810	1,269	251,415	1,024	3,014	85
2007	2,491,000	301,231	827	205,742	1,211	257,472	967	3,031	82
2008	2,346,000	304,094	771	208,321	1,126	259,360	904	2,977	79
2009	2,217,000	306,772	723	209,618	1,058	258,958	856	2,957	75
2010	2,239,074	309,350	724	210,115	1,066	260,252	860	2,967	75

**Sources:** Vehicle Miles of Travel and Licensed Drivers — Federal Highway Administration; Registered Vehicles — R.L. Polk & Co. and Federal Highway Administration; Population — U.S. Bureau of the Census.

The fatality rate per 100 million VMT in 2010 was 1.11, a decrease of 3.5 percent from 1.15 in 2009. The injury rate per 100 million VMT in 2010 was 75, no change from 2009. The fatality rate per 100,000 population was 10.63 in 2010, a decrease of 4 percent from the 2009 rate of 11.05.

Vehicle occupants accounted for 71 percent and motorcyclists accounted for 14 percent of traffic fatalities in 2010. The remaining 15 percent were pedestrians, pedalcyclists, and other nonoccupants. Males accounted for 70 percent of all traffic fatalities, 69 percent of all pedestrian fatalities, and 86 percent of all pedalcyclist fatalities in 2010.

Table 2

**Motor Vehicle Occupants, Motorcyclists, and Nonoccupants Killed and Injured, 2001-2010**

Year	Occupants by Vehicle Type						Motorcyclist	Nonoccupants				Total
	Passenger Cars	Light Trucks	Large Trucks	Buses	Other/Unknown	Total		Pedestrian	Pedalcyclist	Other/Unknown	Total	
<b>Killed</b>												
2001	20,320	11,723	708	34	458	33,243	3,197	4,901	732	123	5,756	42,196
2002	20,569	12,274	689	45	528	34,105	3,270	4,851	665	114	5,630	43,005
2003	19,725	12,546	726	41	589	33,627	3,714	4,774	629	140	5,543	42,884
2004	19,192	12,674	766	42	602	33,276	4,028	4,675	727	130	5,532	42,836
2005	18,512	13,037	804	58	659	33,070	4,576	4,892	786	186	5,864	43,510
2006	17,925	12,761	805	27	601	32,119	4,837	4,795	772	185	5,752	42,708
2007	16,614	12,458	805	36	614	30,527	5,174	4,699	701	158	5,558	41,259
2008	14,646	10,816	682	67	580	26,791	5,312	4,414	718	188	5,320	37,423
2009	13,135	10,312	499	26	554	24,526	4,469	4,109	628	151	4,888	33,883
2010	12,435	9,752	529	44	543	23,303	4,502	4,280	618	182	5,080	32,885
<b>Injured</b>												
2001	1,927,000	861,000	29,000	15,000	9,000	2,841,000	60,000	78,000	45,000	8,000	131,000	3,033,000
2002	1,805,000	879,000	26,000	19,000	6,000	2,735,000	65,000	71,000	48,000	7,000	126,000	2,926,000
2003	1,756,000	889,000	27,000	18,000	7,000	2,697,000	67,000	70,000	46,000	8,000	124,000	2,889,000
2004	1,643,000	900,000	27,000	16,000	7,000	2,594,000	76,000	68,000	41,000	9,000	118,000	2,788,000
2005	1,573,000	872,000	27,000	11,000	10,000	2,494,000	87,000	64,000	45,000	8,000	118,000	2,699,000
2006	1,475,000	857,000	23,000	10,000	11,000	2,375,000	88,000	61,000	44,000	7,000	112,000	2,575,000
2007	1,379,000	841,000	23,000	12,000	8,000	2,264,000	103,000	70,000	43,000	10,000	124,000	2,491,000
2008	1,304,000	768,000	23,000	15,000	9,000	2,120,000	96,000	69,000	52,000	9,000	130,000	2,346,000
2009	1,216,000	759,000	17,000	12,000	7,000	2,011,000	90,000	59,000	51,000	7,000	116,000	2,217,000
2010	1,253,000	733,000	20,000	17,000	5,000	2,027,000	82,000	70,000	52,000	8,000	130,000	2,239,000

**Occupant Protection**

In 2010, 49 States and the District of Columbia had seat belt use laws in effect. Use rates vary widely from State to State, reflecting factors such as differences in public attitudes, enforcement practices, legal provisions, and public information and education programs.

From 1975 through 2010, NHTSA estimates that seat belts saved the lives of 280,486 passenger vehicle occupants age 5 and older, including 12,546 lives saved in 2010. If all passenger vehicle occupants age 5 and older wore seat belts, an estimated 15,887 lives (that is, an additional 3,341) would have been saved in 2010.

In 2010, it is estimated that 303 children under age 5 were saved as a result of child restraint use, which includes child safety seats and seat belts. Among children, an estimated 9,611 lives were saved by restraints from 1975 through 2010.

*NHTSA estimates that 12,546 lives were saved in 2010 by the use of seat belts.*

### Important Safety Information

Children in rear-facing child safety seats should not be placed in the front seat of cars equipped with passenger-side frontal air bags. The impact of a deploying air bag striking a rear-facing child safety seat could result in injury to the child. NHTSA also recommends that children age 12 and under sit in the rear seat away from the force of a deploying frontal air bag.

In 2010, 29 percent of passenger car occupants and 33 percent of light-truck occupants involved in fatal crashes were unrestrained.

In fatal crashes, 78 percent of passenger vehicle occupants who were totally ejected from vehicles were killed. Seat belts are effective in preventing total ejections: only 1 percent of the occupants reported to have been using restraints were totally ejected, compared with 32 percent of the unrestrained occupants.

Table 3 shows belt use for passenger vehicle occupants for 2010 compared to belt use in 2001.

Table 3

#### Restraint Use Rates for Passenger Vehicle Occupants in Fatal Crashes, 2001 and 2010

Type of Occupant	Restraint Use Rate (Percent)	
	2001	2010
Drivers	62	70
All Passengers	54	66
Front Seat	61	72
Rear Seat	51	63
4 Years Old and Younger	78	87
5 Years Old and Older	52	64
All Occupants	59	69

### Alcohol

Drivers are considered to be alcohol-impaired when their blood alcohol concentration (BAC) is .08 grams per deciliter (g/dL) or higher. Thus, any fatality occurring in a crash involving a driver with a BAC of .08 or higher is considered to be an alcohol-impaired-driving fatality. The term “driver” refers to the operator of any motor vehicle, including a motorcycle.

In 2010, there were 10,228 alcohol-impaired-driving fatalities. This is a decrease of 4.9 percent compared to 2009 (10,759), and it represents an average of one alcohol-impaired-driving fatality every 51 minutes.

The 10,228 alcohol-impaired-driving fatalities in 2010 (31% of total traffic fatalities) represent a 23-percent decrease from the 13,290 alcohol-impaired-driving fatalities reported in 2001 (31% of the total).

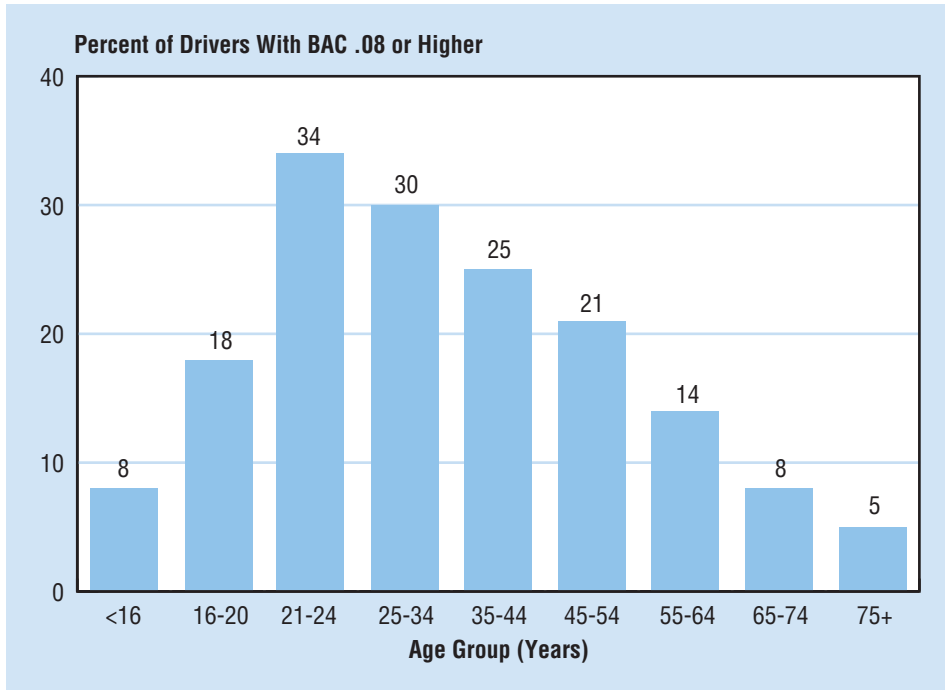
Over 1.41 million drivers were arrested in 2010 for driving under the influence of alcohol or narcotics (FBI’s Uniform Crime Report, 2010). This is an arrest rate of 1 for every 149 licensed drivers in the United States (based on 2010 figures).

In fatal crashes in 2010, 28 percent of motorcycle riders had a BAC level of .08 g/dL or higher, as compared with 23 percent for drivers of passenger cars, 22 percent for light-truck drivers, and 2 percent for drivers of large trucks.

In fatal crashes in 2010, the highest percentages of drivers with BAC levels of .08 g/dL or higher were recorded for drivers 21 to 24 years old (34%), followed by ages 25 to 34 (30%) and 35 to 44 (25%).

*Alcohol-impaired-driving fatalities fell to 10,228 in 2010—31 percent of all traffic fatalities for the year.*

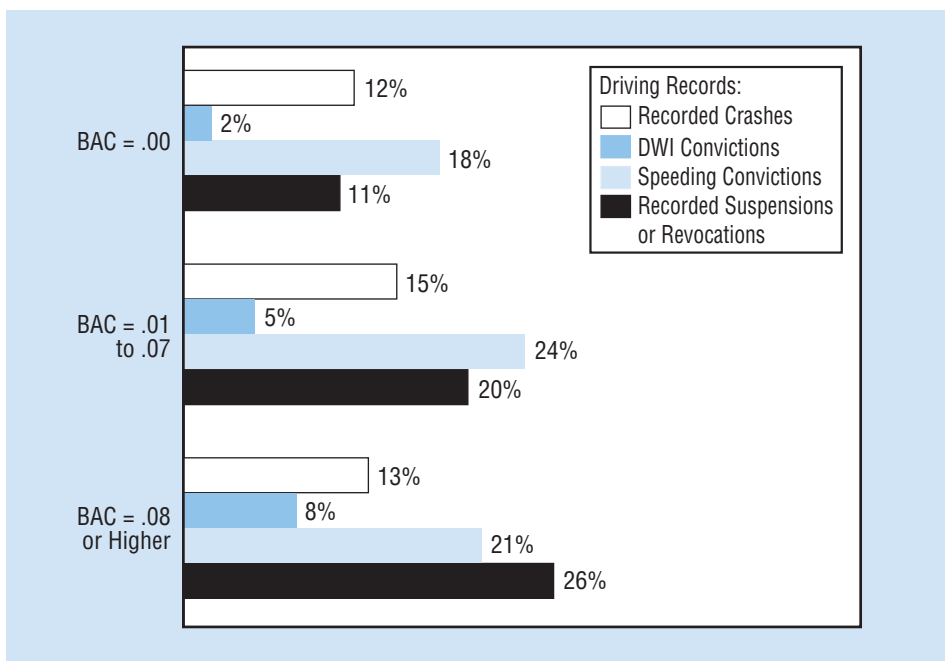
Figure 1  
**Drivers With BAC Levels of .08 or Higher Involved in Fatal Crashes by Age Group, 2010**



*The highest percentage of drivers in fatal crashes who had BAC levels of .08 g/dL or higher was for drivers 21 to 24 years old.*

Drivers with a BAC of .08 g/dL or higher involved in fatal crashes were four times more likely to have a prior conviction for driving while impaired (DWI) than were drivers with no alcohol (8% and 2%, respectively).

Figure 2  
**Previous Driving Records of Drivers Involved in Fatal Traffic Crashes by BAC, 2010**



*Drivers with a BAC level of .08 or higher in fatal crashes were four times more likely to have a prior conviction for driving while impaired than were drivers with no alcohol.*

## Speeding

NHTSA considers a crash to be speeding-related if the driver was charged with a speeding-related offense or if an officer indicated that racing, driving too fast for conditions, or exceeding the posted speed limit was a contributing factor in the crash.

Table 4

**Fatalities in Motor Vehicle Traffic Crashes by Speeding Involvement, 2001–2010**

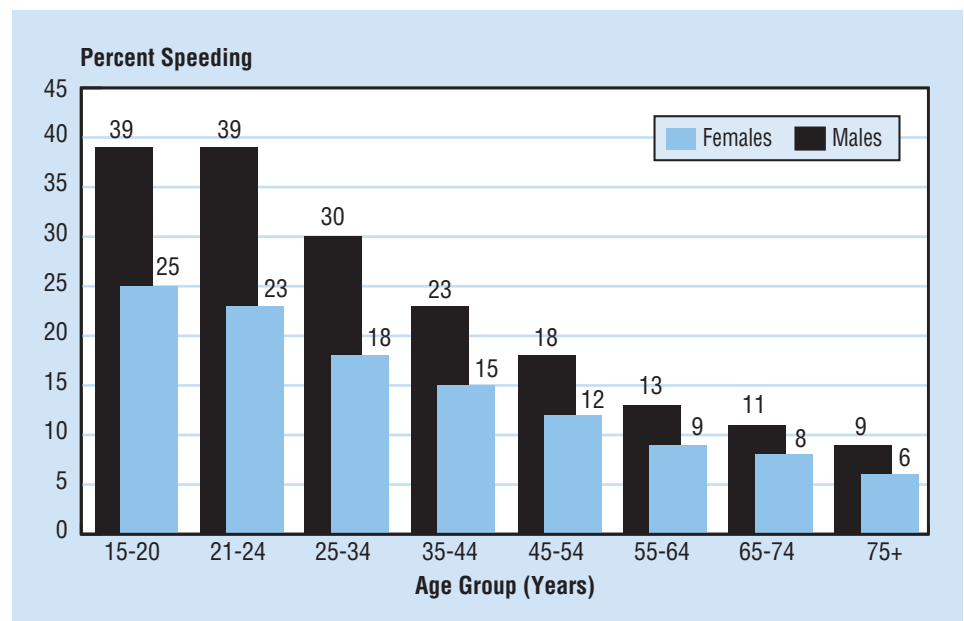
Year	Speeding		Not Speeding	
	Number	Percent	Number	Percent
2001	12,924	31	29,272	69
2002	13,799	32	29,206	68
2003	13,499	31	29,385	69
2004	13,291	31	29,545	69
2005	13,583	31	29,927	69
2006	13,609	32	29,099	68
2007	13,140	32	28,119	68
2008	11,767	31	25,656	69
2009	10,664	31	23,219	69
2010	10,395	32	22,490	68

For drivers involved in fatal crashes, young males are the most likely to be speeding. In 2010, 39 percent of the 15- to 20-year-old and 21- to 24-year-old male drivers who were involved in fatal crashes were speeding at the time of the crash.

Speeding is one of the most prevalent factors contributing to traffic crashes. In 2010, speeding was a contributing factor in 32 percent of all fatal crashes, and 10,395 lives were lost in speeding-related crashes.

Figure 3

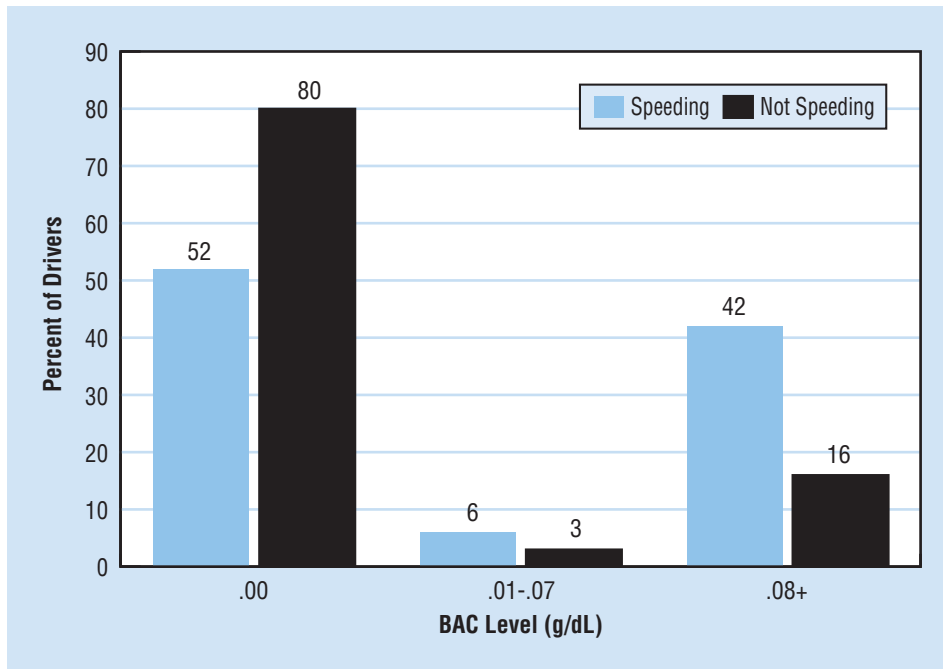
**Speeding Drivers in Fatal Crashes by Age and Sex, 2010**



In 2010, 86 percent of speeding-related fatalities occurred on roads that were not Interstate highways.

Alcohol involvement was prevalent for drivers who were speeding in fatal crashes in 2010. Forty-two percent of the drivers who were speeding in fatal crashes in 2010 had BAC levels of .08 g/dL or higher, compared with only 16 percent for drivers who were not speeding.

Figure 4  
**Percentage of All Drivers in Fatal Crashes by Speeding Involvement and BAC Level, 2010**



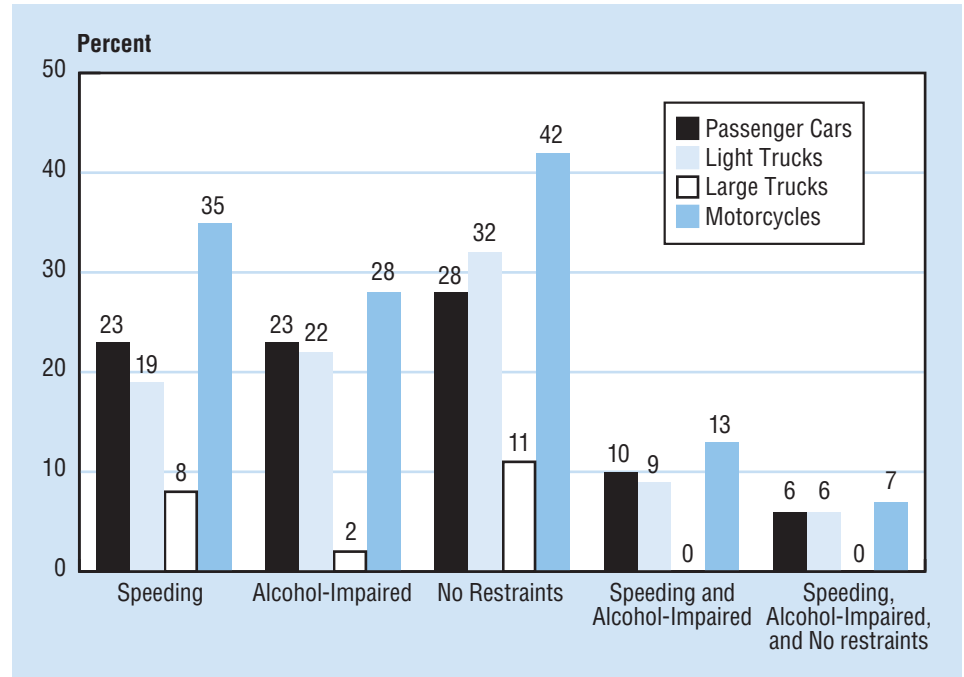
*In 2010, 86 percent of speeding-related fatalities occurred on roads that were not Interstate highways.*

*In fatal crashes, 35 percent of motorcycle riders were speeding.*

In 2010, 35 percent of all motorcycle riders involved in fatal crashes were speeding, as compared to 23 percent for passenger car drivers, 19 percent for light-truck drivers, and 8 percent for large-truck drivers.

Figure 5

**Speeding, Alcohol-Impaired, and Failure to Use Restraints Among Drivers Involved in Fatal Crashes by Vehicle Type, 2010**



Note: Among large-truck drivers, speeding and alcohol-impairment; as well as speeding, alcohol-impairment, and failure to use restraints was less than 0.5 percent.

*Per vehicle mile traveled in 2010, motorcyclists were 30 times more likely than passenger car occupants to die in a motor vehicle traffic crash.*

## Motorcycles

The 4,502 motorcyclist fatalities in 2010 accounted for 14 percent of all traffic fatalities for the year. An additional 82,000 motorcyclists were injured.

Per vehicle mile traveled in 2010, motorcyclists were 30 times more likely than passenger car occupants to die in a motor vehicle traffic crash and 5 times more likely to be injured.

In 2010, 42 percent of fatally injured motorcycle riders and 51 percent of fatally injured motorcycle passengers were not wearing helmets at the time of the crash.

More than one-fifth of motorcycle riders (22%) involved in fatal crashes in 2010 were driving the vehicles with invalid licenses at the time of the collision.

The percentage of motorcycle riders involved in fatal crashes in 2010 who had BAC levels of .08 g/dL or higher — 28 percent — was higher than for any other type of motor vehicle driver (as shown in Figure 5).

NHTSA estimates that helmets saved the lives of 1,550 motorcyclists in 2010. If all motorcyclists had worn helmets, an additional 706 lives could have been saved.



## Large Trucks

In 2010, 11 percent (3,675) of all the motor vehicle traffic fatalities involved large trucks (gross vehicle weight rating greater than 10,000 pounds).

Of the fatalities that resulted from crashes involving large trucks, 76 percent were occupants of other vehicles, 14 percent were occupants of large trucks, and 10 percent were nonoccupants.

Table 5  
**People Killed and Injured in Crashes Involving Large Trucks, 2010**

		Number	Percentage of Total
<b>Killed</b>	Occupants of Large Trucks	529	14
	<i>in Single-Vehicle Crashes</i>	337	9
	<i>in Multiple-Vehicle Crashes</i>	192	5
	Occupants of Other Vehicles in Crashes Involving Large Trucks	2,790	76
	Nonoccupants (Pedestrians, Pedalcyclists, etc.)	356	10
	<b>Total</b>	<b>3,675</b>	<b>100</b>
<b>Injured</b>	Occupants of Large Trucks	20,000	25
	<i>in Single-Vehicle Crashes</i>	9,000	11
	<i>in Multiple-Vehicle Crashes</i>	11,000	13
	Occupants of Other Vehicles in Crashes Involving Large Trucks	58,000	73
	Nonoccupants (Pedestrians, Pedalcyclists, etc.)	2,000	2
	<b>Total</b>	<b>80,000</b>	<b>100</b>

*Eleven percent of all motor vehicle traffic fatalities in 2010 involved large trucks.*

Large trucks accounted for 8 percent of all vehicles involved in fatal crashes and 3 percent of all vehicles involved in injury and property-damage-only crashes in 2010.

More than two-thirds (70%) of the large trucks involved in fatal crashes in 2010 collided with other motor vehicles in transport.

## Passenger Vehicles

In 2010, 22,187 passenger vehicle occupants were fatally injured, accounting for 80 percent of all occupant fatalities (passenger cars 45%, light trucks 35%). Light trucks consist of SUVs, pickups, and vans. An additional 1,986,000 passenger vehicle occupants were injured, representing 94 percent of all occupants injured (passenger cars 59%, light trucks 35%). The average age of passenger vehicle occupant killed in crashes in 2010 was 42.

In 2010, 51 percent of passenger vehicle occupant fatalities occurred in vehicles that sustained frontal damage.

Ejection from the vehicle accounted for 27 percent of all passenger vehicle occupant fatalities. The ejection rate for occupants of passenger cars in fatal crashes was 19 percent and for light trucks was 37 percent.

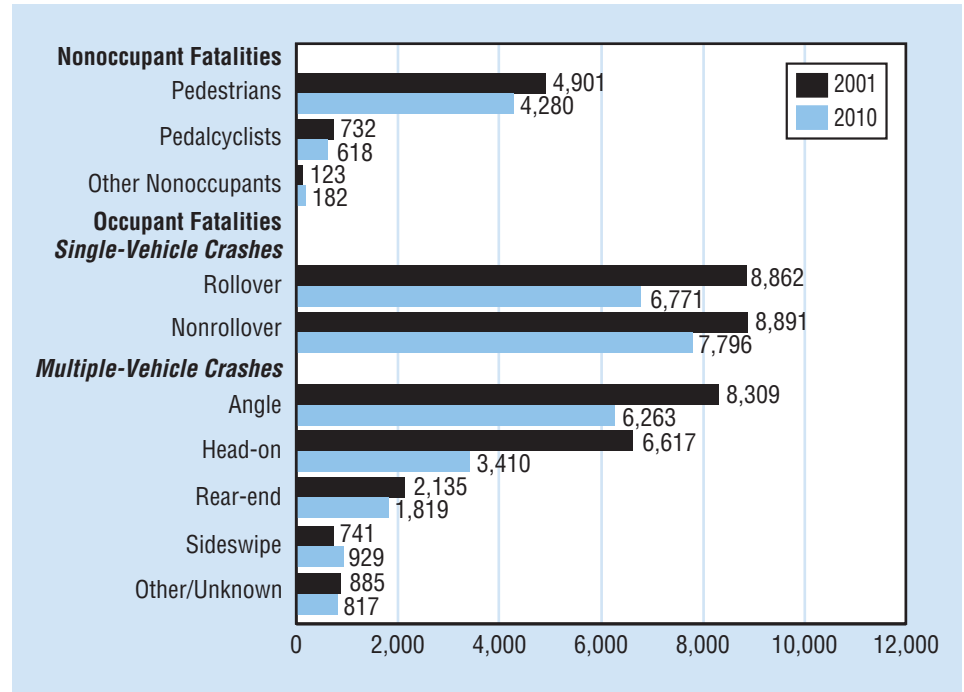
*Twenty-seven percent of all passenger vehicle occupants killed were ejected from the vehicle.*

*Fifty-one percent of the passenger vehicle occupants killed in traffic crashes in 2010 were unrestrained.*

More than half (51%) of the passenger vehicle occupants killed in traffic crashes in 2010 were unrestrained.

SUVs had the highest rollover involvement rate of any vehicle type in fatal crashes — 32 percent, as compared with 27 percent for pickups, 16 percent for vans, and 16 percent for passenger cars.

Figure 6  
**Fatalities in Traffic Crashes, 2001 and 2010**



*In 2010, older people (65+) made up 17 percent of all traffic fatalities and 19 percent of all pedestrian fatalities.*

### Older Population

In 2010, 13 percent (40.4 million) of the total U.S. resident population were people age 65 and older.

In 2010, 5,484 older individuals (65+) were killed and 188,000 were injured in traffic crashes, accounting for 17 percent of all people killed and 8 percent of all the people injured in traffic crashes during the year. Older individuals made up 16 percent of all vehicle occupant fatalities, and 19 percent of all pedestrian fatalities.

The percentage of older drivers involved in fatal crashes in 2010 who had BAC levels of .08 g/dL or higher (6%) was lower than for any other group of adult drivers.

Fatalities in crashes involving older drivers increased by 2 percent, from 5,613 in 2009 to 5,750 in 2010. Most traffic fatalities involving older drivers in 2010 occurred during the daytime (77%).

## Young Drivers

In 2010, 4,585 young drivers ages 15 to 20 years old were involved in fatal crashes — a 44-percent decrease from the 8,166 involved in 2001. Driver fatalities for this age group decreased by 46 percent between 2001 and 2010.

Of all (44,440) drivers involved in fatal crashes, 10 percent (4,585) were young drivers, and of all (9,542,000) drivers involved in police-reported crashes, 14 percent (1,315,000) were young drivers.

In 2010, 30 percent of the young drivers who were killed in crashes had a BAC of .01 g/dL or higher; 25 percent had a BAC of .08 g/dL or higher.

Drivers are less likely to use restraints when they have been drinking. In 2010, 56 percent of the young drivers of passenger vehicles involved in fatal crashes who had been drinking were unrestrained. Of the young drivers who had been drinking and were killed in crashes, 71 percent were unrestrained. In comparison, of the non-drinking young drivers killed, 47 percent were unrestrained.

## Children

In 2010, of the 32,885 traffic fatalities in the United States, the 14-and-younger age group accounted for 4 percent (1,210). This age group accounted for 3 percent (876) of all vehicle occupant fatalities, 8 percent (171,000) of all the people injured in motor vehicle crashes, and 7 percent (147,000) of all the vehicle occupants injured in crashes. During 2010, fatalities in this age group (1,210) decreased 8 percent from the 1,320 fatalities in 2009.

One-fifth (19%) of all children between the ages of 5 and 9 who were killed in motor vehicle traffic crashes were pedestrians. Among fatalities in children age 14 and younger, pedestrian fatalities accounted for 21 percent in 2010.

In 2010, a total of 1,210 children age 14 and younger were killed in motor vehicle traffic crashes. Of those 1,210 fatalities, 211 (17%) occurred in alcohol-impaired driving crashes. Out of those 211 deaths, 131 (62%) were occupants of a vehicle with a driver who had a BAC level of .08 g/dL or higher. Another 25 children were pedestrians or pedalcyclists who were struck by drivers with a BAC of .08 g/dL or higher.

## Pedestrians

In 2010, 4,280 pedestrians were killed and 70,000 were injured in traffic crashes in the United States, representing 13 percent of all fatalities and 12 percent of all people injured in traffic crashes.

On average, a pedestrian is killed in a motor vehicle crash every 123 minutes, and one is injured every 8 minutes.

Alcohol involvement — either for the driver or the pedestrian — was reported in 47 percent of the traffic crashes that resulted in pedestrian fatalities. Of the pedestrians involved, 33 percent had BAC levels of .08 g/dL or higher. Of the drivers involved in these fatal crashes, only 14 percent had BAC levels of .08 g/dL or higher. In 6 percent of the crashes, both the driver and the pedestrian had BAC levels of .08 g/dL or higher.

*In 2010, 10 percent of all the drivers involved in fatal crashes were between 15 and 20 years old.*

*Pedestrian fatalities in 2010 were 13 percent lower than in 2001.*

*Eleven percent of the pedalcyclists killed in traffic crashes in 2010 were between 5 and 15 years old.*

## Pedalcyclists

In 2010, 618 pedalcyclists were killed and an additional 52,000 were injured in traffic crashes. Pedalcyclists made up 2 percent of all traffic fatalities and 2 percent of all the people injured in traffic crashes during the year.

Most of the pedalcyclists killed or injured in 2010 were males (75% and 86%, respectively).

During 2010, 11 percent of the pedalcyclists killed in traffic crashes were between the ages of 5 and 15.

Table 6  
**Nonoccupant Traffic Fatalities, 2001-2010**

Year	Pedestrian	Pedalcyclist	Other/Unknown Nonoccupants	Total
2001	4,901	732	123	5,756
2002	4,851	665	114	5,630
2003	4,774	629	140	5,543
2004	4,675	727	130	5,532
2005	4,892	786	186	5,864
2006	4,795	772	185	5,752
2007	4,699	701	158	5,558
2008	4,414	718	188	5,320
2009	4,109	628	151	4,888
2010	4,280	618	182	5,080

### For more information:

Information on traffic fatalities is available from the National Center for Statistics and Analysis (NCSA), NVS-424, 1200 New Jersey Avenue SE., Washington, DC 20590. NCSA can be contacted at 800-934-8517 or via the following e-mail address: [ncsaweb@dot.gov](mailto:ncsaweb@dot.gov). General information on highway traffic safety can be accessed by Internet users at [www.nhtsa.gov/NCSA](http://www.nhtsa.gov/NCSA). To report a safety-related problem or to inquire about motor vehicle safety information, contact the Vehicle Safety Hotline at 888-327-4236.

Other fact sheets available from the National Center for Statistics and Analysis are *Alcohol-Impaired Driving*, *Bicyclists and Other Cyclists*, *Children*, *Large Trucks*, *Motorcycles*, *Occupant Protection*, *Older Population*, *Passenger Vehicles*, *Pedestrians*, *Race and Ethnicity*, *Rural/Urban Comparisons*, *School Transportation-Related Crashes*, *Speeding*, *State Alcohol Estimates*, *State Traffic Data*, and *Young Drivers*. Detailed data on motor vehicle traffic crashes are published annually in *Traffic Safety Facts: A Compilation of Motor Vehicle Crash Data from the Fatality Analysis Reporting System and the General Estimates System*. The fact sheets and annual Traffic Safety Facts report can be accessed online at [www-nrd.nhtsa.dot.gov/CATS/index.aspx](http://www-nrd.nhtsa.dot.gov/CATS/index.aspx).



U.S. Department  
of Transportation  
**National Highway  
Traffic Safety  
Administration**