



Animal and Plant Health Inspection Service

Veterinary Services

Poultry 2010 Clostridial Dermatitis Sample Collection Record

National Animal Health Monitoring System

2150 Centre Ave, Bldg B
Fort Collins, CO 80526

Form Approved
OMB Number
Expires:

CASE FARMS

Select **one house** which has previously had frequent clostridial dermatitis outbreaks and in which you anticipate an outbreak again this year.

Begin sampling when turkeys are 9 weeks of age.

Collect samples from this house weekly for 5 weeks (or until the outbreak occurs).

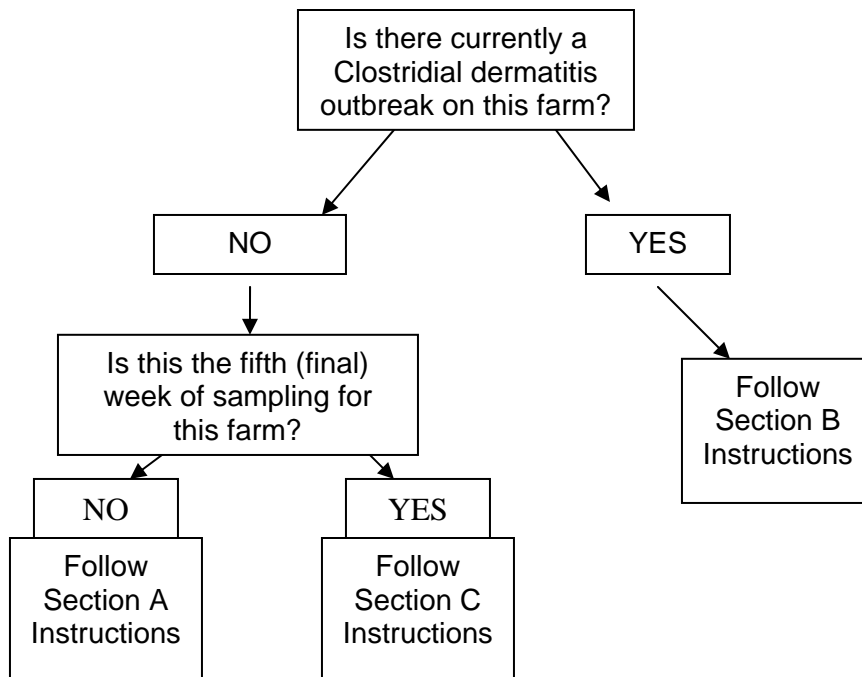
CONTROL FARMS

Select **one house** in which you do not anticipate a clostridial dermatitis outbreak.

Begin sampling when turkeys are 9 weeks of age.

Collect samples from this house weekly for 5 weeks.

Use the flow chart below to determine what samples to collect:



According to the Paperwork Reduction Act of 1995, an agency may not conduct or sponsor, and a person is not required to respond to a collection of information unless it displays a valid OMB control number. The valid OMB control number for this information collection is 0579-XXXX. The time required to complete this information collection is estimated to average 1 hour per response, including the time to review instructions, search existing data resources, gather the data needed, and complete and review the information collected.

**NAHMS-240
May 2010**

Left blank on purpose

Section A Instructions (Weeks 1 through 4 – no outbreak)

Sacrifice 3 healthy turkeys.

Intestinal histopathology samples: Immediately after death, open turkey to expose the GI tract. Gently lift the intestinal tract and identify the

- Duodenal bend
- The diverticulum, and
- The cecal tonsil.

Remove a one-quarter inch (1/4") section of the duodenal bend include a small piece of the pancreas. Place in an open cassette next to the hinge of the cassette.

Remove a one-quarter inch (1/4") section of the jejunum including the diverticulum. Place this specimen in the middle of the cassette.

Remove a one-quarter inch (1/4") section of the colon at the cecal tonsil include the inlet for each cecum. Place this section near the closure of the cassette.

Drop the cassette into 10% buffered formalin. Screw the jar lid on, tape to secure, and label the jar.

Complete the submission form and send a copy of it and the samples to NVSL, Ames, Iowa.

Section B Instructions (Weeks 1 through 5 – outbreak currently occurring)

Sacrifice 3 turkeys **with symptoms of clostridial dermatitis**. Turkeys that have died within the last 8 hours with symptoms of clostridial dermatitis are acceptable for sampling.

➔ Samples must be collected prior to starting antibiotics.

If sick or recently dead turkeys are not available, unaffected turkeys can be collected instead. Be sure to label the samples as such.

Collect FIRST - Litter samples:

Collect golf ball-sized litter samples from each of these locations:

- Under a feeder
- Under a drinker
- Middle of the barn
- Away from feeders/drinkers

Place all 4 samples in the same Whirlpak bag and label.

Collect SECOND - Culture samples:

From the 3 turkeys, collect **in this order**:

- First, a 1 inch cube of spleen - place the sample in its own Whirlpak bag.
- Next, a 1 inch cube of muscle/subcutaneous tissue that is affected by clostridial dermatitis lesion and place the sample in its own Whirlpak bag. (Skip this sample if no muscular/subcutaneous lesion present.)
- Next, tie off a 3 inch section of mid- intestine at each end. Excise the piece of intestine (keeping the ends tied) and place the sample in its own Whirlpak bag.

Collect LAST - Intestinal histopathology samples:

Intestinal histopathology samples: Immediately after death, open turkey to expose the GI tract. Gently lift the intestinal tract and identify the

- Duodenal bend
- The diverticulum, and
- The cecal tonsil.

Remove a one-quarter inch (1/4") section of the duodenal bend include a small piece of the pancreas. Place in an open cassette next to the hinge of the cassette.

Remove a one-quarter inch (1/4") section of the jejunum including the diverticulum. Place this specimen in the middle of the cassette.

Remove a one-quarter inch (1/4") section of the colon at the cecal tonsil include the inlet for each cecum. Place this section near the closure of the cassette.

Drop the cassette into 10% buffered formalin. Screw the jar lid on, tape to secure, and label the jar.

Complete the submission form and send a copy of it and the samples to NVSL, Ames, Iowa.

Section C Instructions (Week 5 with no outbreak)

Sacrifice 3 healthy turkeys.

Collect FIRST - Litter samples:

Collect golf ball-sized litter samples from each of these locations:

- Under a feeder
- Under a drinker
- Middle of the barn
- Away from feeders/drinkers

Place all 4 samples in the same Whirlpak bag and label.

Collect SECOND - Culture samples:

From the 3 turkeys, collect **in this order**:

- First, a 1 inch cube of spleen - place the sample in its own Whirlpak bag.
- Next, tie off a 3 inch section of mid- intestine at each end. Excise the piece of intestine (keeping the ends tied) and place the sample in its own Whirlpak bag.

Collect LAST - Intestinal histopathology samples:

Intestinal histopathology samples: Immediately after death, open turkey to expose the GI tract.

Gently lift the intestinal tract and identify the

- Duodenal bend
- The diverticulum, and
- The cecal tonsil.

Remove a one-quarter inch (1/4") section of the duodenal bend include a small piece of the pancreas. Place in an open cassette next to the hinge of the cassette.

Remove a one-quarter inch (1/4") section of the jejunum including the diverticulum. Place this specimen in the middle of the cassette.

Remove a one-quarter inch (1/4") section of the colon at the cecal tonsil include the inlet for each cecum. Place this section near the closure of the cassette.

Drop the cassette into 10% buffered formalin. Screw the jar lid on, tape to secure, and label the jar.

Complete the submission form and send a copy of it and the samples to NVSL, Ames, Iowa.

Confirm you have all of the samples you need

If no outbreak – you will submit 3 cassettes in formalin, each cassette representing one healthy bird. Each cassette contains 3 intestinal samples.

If this is the week of an outbreak – you will submit:

- 3 cassettes in formalin, each representing 1 sick bird. Each cassette contains 3 intestinal samples.
- 9 Whirlpaks – 3 Whirlpaks for each sick bird. For each bird: one bag contains spleen, one contains muscle (lesion), and one contains intestine
- 1 Whirlpak with litter (mixture from 4 different locations in barn)

If this is the fifth (final) week of collection on a case or control farm that did not break with Clostridial dermatitis – you will submit:

- 3 cassettes in formalin, each representing 1 healthy bird. Each cassette contains 3 intestinal samples.
- 6 Whirlpaks – 2 Whirlpaks for each healthy bird. For each bird: one bag contains spleen and one contains intestine
- 1 Whirlpak with litter (mixture from 4 different locations in barn)

Preparing Samples and Shipping Instructions

Freeze ice packs thoroughly before collection.

Specimens placed in Whirl-pak bags must be cooled down quickly using ice packs, and shipped within 24 hours of collection.

Make sure all samples are **Labeled** correctly.

If necessary, replace ice packs so samples are shipped with frozen ice packs. DO NOT freeze samples.

Complete all information on the submission form and place the YELLOW copy in the sample box between Styrofoam lid and outside box flap. Send the original to NAHMS and keep the pink copy for your records.



Animal and Plant
Health
Inspection Service

Veterinary
Services

Poultry 2010 Clostridial Dermatitis Sample Collection Record

National Animal Health
Monitoring System

2150 Centre Ave, Bldg B
Fort Collins, CO 80526

Form Approved
OMB Number
Expires:

Complete the information in the table below:

| | | | | |
|--|--|--|---|---|
| Operation #: <small>4 digits</small> | Collector : <small>Initials</small> | Date: <small>(mm/dd/yy)</small> | Kit # on labels | What instructions were followed? <input type="checkbox"/> Section A <input type="checkbox"/> Section B <input type="checkbox"/> Section C |
| Is this a CASE or CONTROL farm? <input type="checkbox"/> case <input type="checkbox"/> control | | Farm Region <input type="checkbox"/> North Carolina/South Carolina <input type="checkbox"/> Wisconsin/Minnesota <input type="checkbox"/> Arkansas/Missouri | | |
| Total time for everyone involved to take the samples (in hours): | | | Total travel time for everyone (in hours): | |

Answer the following questions:

- Sampling week: (*Check one only*) 1 2 3 4 5
- How old is this house?....._____ years
- Did the previous flock in this house have problems with clostridial dermatitis? Yes No
- What is the age of the turkeys in this house today (in weeks)?....._____ age in wks
- Does this house contain: (*Check one only*) Toms only Hens only Toms and hens
- Have the turkeys in this house received an antibiotic in the last 2 weeks? Yes No
If yes, specify the antibiotic(s) given _____
- Are turkeys in this house currently experiencing symptoms consistent with Clostridial dermatitis? Yes No
If yes, on what date did symptoms begin?_____date
- What was the total mortality in the last 24 hours for this house?....._____deaths
 Don't Know

Complete this table for each bird:

| Turkey ID | Was this turkey found dead or sacrificed? | Did this turkey have symptoms consistent with Clostridial dermatitis? | Is this a tom or a hen? | Gross Lesions (please describe) |
|-----------|--|---|---|---------------------------------|
| 1 | <input type="checkbox"/> Found dead <input type="checkbox"/> Sacrificed | <input type="checkbox"/> Yes <input type="checkbox"/> No | <input type="checkbox"/> Tom <input type="checkbox"/> Hen | |
| 2 | <input type="checkbox"/> Found dead <input type="checkbox"/> Sacrificed | <input type="checkbox"/> Yes <input type="checkbox"/> No | <input type="checkbox"/> Tom <input type="checkbox"/> Hen | |
| 3 | <input type="checkbox"/> Found dead <input type="checkbox"/> Sacrificed | <input type="checkbox"/> Yes <input type="checkbox"/> No | <input type="checkbox"/> Tom <input type="checkbox"/> Hen | |