

## Bureau of Labor Statistics

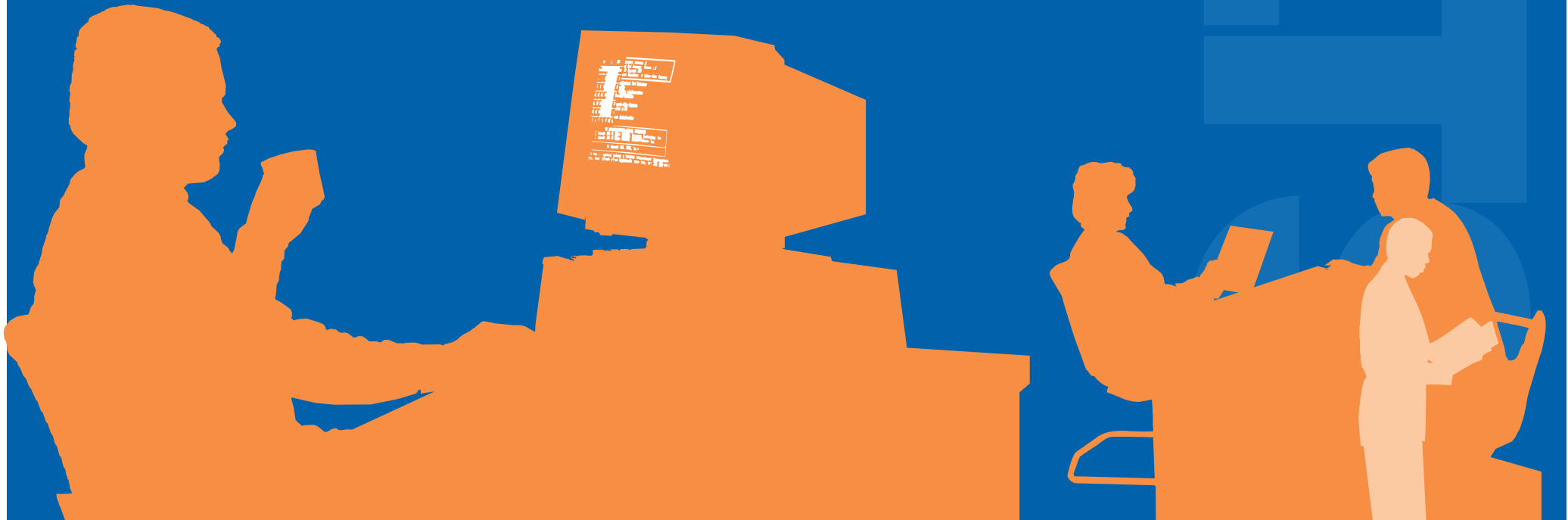
National Office	Telephone contact	Fax number	E-mail address
Office of Publications	(202) 691-5200	(202) 691-7890	blsdata_staff@bls.gov
Job Openings and Labor Turnover Survey	(202) 691-5870	(202) 691-6645	joltsinfo@bls.gov
Current Employment Statistics	(202) 691-6555	(202) 691-6641	cesinfo@bls.gov
Current Population Survey	(202) 691-6378	(202) 691-6426	cpsinfo@bls.gov
Quarterly Census of Employment and Wages	(202) 691-6567	(202) 691-6645	qcewinfo@bls.gov
Occupational Employment Statistics	(202) 691-6569	(202) 691-6444	oesinfo@bls.gov
Local Area Unemployment Statistics	(202) 691-6392	(202) 691-6459	lausinfo@bls.gov
Employment Projections	(202) 691-5700	(202) 691-5745	oohinfo@bls.gov
Consumer Price Index	(202) 691-7000	(202) 691-6999	cpi_info@bls.gov
Producer Price Index	(202) 691-7705	(202) 691-7754	ppi-info@bls.gov
National Compensation Survey	(202) 691-6199	(202) 691-6647	ocltinfo@bls.gov

*Your company is important,  
and your information is needed.*

## Bureau of Labor Statistics Job Openings and Labor Turnover Survey (JOLTS)



U.S. Department of Labor  
U.S. Bureau of Labor Statistics



# *Your company is highly valued and your input is needed.*

## **What is the Job Openings and Labor Turnover Survey?**

The Job Openings and Labor Turnover Survey (JOLTS) is a monthly count of job openings, hires, quits, layoffs and discharges, and other separations. JOLTS data help measure the demand for labor and track the health of the economy.

## **Why are JOLTS data needed?**

The number of unfilled jobs—used to calculate the job openings rate—is an important measure of the demand for labor. This number is often compared to measures of unemployment to determine how well the U.S. labor market is functioning. JOLTS can reveal the effectiveness of job matching and training programs and can be used as a major policy indicator.

---

*JOLTS can reveal the effectiveness of job matching and training programs.*

## **How does this affect me?**

The information you supply is crucial to spotting trends that affect both your industry and the national economy as a whole. Many business and government leaders rely on this information to guide policy and planning decisions that affect you professionally and personally.

Your participation is critical to the accuracy of the survey's results. Your company is important and your input is needed. We appreciate your participation in this important survey.

*As always at BLS, the information you provide is held in confidence.*

---

*Many business and government leaders rely on this information.*

## **How can I use the data?**

JOLTS publishes job openings and turnover rates. You can compare your company to national, regional, or industry-specific data. How strong is your retention of employees? Is your hire rate above or below the average? Are you leading the pack or falling behind when it comes to these employment issues? Your participation in JOLTS will help the Bureau of Labor Statistics provide businesses and the American public with information critical in planning for future growth and success.

*Survey results are available free of charge. See the back panel of this pamphlet to learn how you can get this and other information from the Bureau of Labor Statistics and put it to work for you.*

---

*You can compare your company to national, regional, or industry-specific data.*