



**OFFICE OF THE SECRETARY OF DEFENSE  
SEXUAL ASSAULT PREVENTION  
AND RESPONSE OFFICE**

## **Maintain End Strength Data**

### **DSAID Use Case Specification**

Version 1.6.3

# Table of Contents

1	Description	3
2	Actors	3
3	Pre-Conditions	3
4	Triggers	3
5	Basic Flow – Enter DoD End Strength Data	3
6	Alternative Flows	5
6.1	Alternative Flow #1 - Retrieve Existing Fiscal Year DoD End Strength Data	5
6.2	Alternative Flow #2 - Modify Existing Fiscal Year DoD End Strength Data	5
7	Exception Flows	7
7.1	Exception Flow #1 - No End Strength Data for any Fiscal Year Found	7
8	Post Conditions	7
9	Extension Points	7
10	Special Requirements	7
11	Activity Diagram	7
12	References	9

# Maintain End Strength Data

## 1 Description

This use case describes how a Sexual Assault Prevention and Response Office (SAPRO) Analyst captures and maintains the annual End Strength Data. The End Strength Data for different perspectives will be entered manually by the SAPRO Analyst. The SAPRO Analyst will also be able to retrieve and modify previously stored Fiscal Year End Strength Data.

## 2 Actors

SAPRO Analyst  
SAPRO Super User

## 3 Pre-Conditions

UC20.1.1 The SAPRO Analyst is logged into the system.  
UC20.1.2 The historical Fiscal Year End Strength Data must be available in DSAID for retrieval for the alternative flow.

## 4 Triggers

N/A

## 5 Basic Flow – Enter DoD End Strength Data

UC20.2.1 The use case begins when the user selects to enter DoD End Strength Data for a new Fiscal Year.

Alternative Flow #1: Retrieve Existing Fiscal Year DoD End Strength Data

BR61 Only SAPRO Analyst can create and maintain DoD Fiscal Year End Strength Data in DSAID.

UC20.2.2 The system prompts the user to enter the following information:

Fiscal Year

Total Number of Service members

Number of Service members by Service Affiliations

Number of Service members by Gender

Number of Service members by Age Range (Optional)

Number of Service members by Pay Grade Range (Optional)

SYS52 The system shall require the user to populate the Fiscal Year, Total Number of Service members for the Fiscal Year, Number of Service members by Service Affiliation, and Number of Service members by Gender.

DR6.6 End Strength Fiscal Year

DR6.7 End Strength Data by Service Affiliation

DR6.8 End Strength Data by Gender

SYS53 The system shall make Number of Service Members by Age Range and by Pay Grade Range optional.

DR6.9 End Strength Data by Age Range

DR6.10 End Strength Data by Pay Grade Range

SYS276 The system shall only allow End Strength data for current fiscal Year, and minus one year to be entered when creating End Strength data.

UC20.2.3 The user enters the data and selects to save the End Strength Data as “Draft” or “Final” status.

SYS227 The system shall provide the option to save End Strength data for a Fiscal Year as "Draft" or "Final" status.

UC20.2.4 If there is a “Final” version for the same Fiscal Year already, the system indicates the information to the user and prompts the user to confirm to override the existing final version.

If there is no existing Maintain End Strength list or a “Draft” version for the same Fiscal Year, go to step 6.

SYS228 The system shall allow only one version of the End Strength data for a Fiscal Year to be stored in DSAID.

SYS229 The system shall prompt for confirmation when the user attempts to save the End Strength data for a Fiscal Year, of which a "Final" status already exists in DSAID.

BR12 Only SAPRO Super User must be able to override the existing Final version of End Strength data for a Fiscal Year.

UC20.2.5 If the user confirms to override, go to step 6.

Otherwise, the system goes back to step 2 to allow the user to modify.

UC20.2.6 If all the validation rules are met then the system saves the End Strength Data for the Fiscal Year with appropriate status.

Otherwise, the system presents corresponding messages to the user and goes back to step 2 to modify.

SYS230 The system shall save End Strength data for a Fiscal Year as "Draft" or "Final" as indicated by the user.

SYS232 The system shall indicate a message stating which condition failed the End Strength data validation.

BR13 The sum of the Number of Service members by Service Affiliation must be equal to the Total Number of Service members.

BR14 The sum of the Number of Service members by Gender must be equal to the Total Number of Service members.

BR15 The sum of the Number of Service members by Age Range must be equal to the Total Number of Service members.

BR16 The sum of the Number of Service members by Pay Grade Range must be equal to the Total Number of Service members.

UC20.2.7 The use case ends.

## **6 Alternative Flows**

### **6.1 Alternative Flow #1 - Retrieve Existing Fiscal Year DoD End Strength Data**

UC20.3.1.1 The user selects to retrieve existing DoD End Strength Data.

UC20.3.1.2 The system displays all available Fiscal Years that End Strength Data are stored for and their status.

Exception Flow: No End Strength Data for any Fiscal Year Found.

SYS54 The system shall provide a list of Fiscal Year and status of each existing End Strength data information for the user to select.

DR6.6 End Strength Fiscal Year

SYS272 The system shall sort the End Strength data list by Fiscal Year in descending order.

UC20.3.1.3 The user selects a Fiscal Year.

UC20.3.1.4 The system displays the End Strength Data for the following as read only:

Total Number of Service members

Number of Service members by Service Affiliations

Number of Service members by Gender

Number of Service members by Age Range

Number of Service members by Pay Grade Range

Alternative Flow #2: Modify Existing Fiscal Year DoD End Strength Data

SYS55 The system shall display the following End Strength data for a selected Fiscal Year: Total Number of Service members, Number of Service members by Service Affiliations, Number of Service members by Gender, Number of Service member by Age Range and Number of Service members by Pay Grade Range.

DR6.6 End Strength Fiscal Year

DR6.7 End Strength Data by Service Affiliation

DR6.8 End Strength Data by Gender

DR6.9 End Strength Data by Age Range

DR6.10 End Strength Data by Pay Grade Range

SYS270 The system shall display the End Strength Data as read only.

UC20.3.1.5 The use case ends.

### **6.2 Alternative Flow #2 - Modify Existing Fiscal Year DoD End Strength Data**

UC20.3.2.1 The user selects to modify existing DoD End Strength Data for the selected Fiscal Year.

SYS56 The system shall provide a list of existing End Strength data information for the user to select for modification, including Fiscal Year and Status.

DR6.6 End Strength Fiscal Year

SYS272 The system shall sort the End Strength data list by Fiscal Year in descending order.

UC20.3.2.2 If the user selects a Fiscal Year with “Draft” Status, the system displays the End Strength Data with the following information and allow the user to modify the entry by going back to basic flow step 3:

Total Number of Service members

Number of Service members by Service Affiliations

Number of Service members by Gender

Number of Service members by Age Range

Number of Service members by Pay Grade Range

SYS57 The system shall allow the user to select a Fiscal Year with "Draft" status.

SYS58 The system shall allow the user to modify the Fiscal Year, Total Number of Service members, Number of Service members by Service Affiliation, Number of Service members by Gender, Number of Service members by Age Range and Number of Service members by Pay Grade Range.

DR6.6 End Strength Fiscal Year

DR6.7 End Strength Data by Service Affiliation

DR6.8 End Strength Data by Gender

DR6.9 End Strength Data by Age Range

DR6.10 End Strength Data by Pay Grade Range

UC20.3.2.3 If the selected Fiscal Year End Strength Data is in “Final” status, the system indicates the information to the user and prompts the user to confirm to modify the final version of the selected Fiscal Year.

SYS59 The system shall prompt for confirmation when the user selects to modify the End Strength data for the selected Fiscal Year that is in "Final" status.

BR12 Only SAPRO Super User must be able to override the existing Final version of End Strength data for a Fiscal Year.

UC20.3.2.4 If the user confirms to modify, the system allows user to modify. Go to basic flow step 3.

## **7 Exception Flows**

### **7.1 Exception Flow #1 - No End Strength Data for any Fiscal Year Found**

UC20.4.1.1 The system displays a message indicating there is no End Strength Data for any Fiscal Year found.

SYS174 The system displays a message indicating there is no End Strength data for any Fiscal Year found.

UC20.4.1.2 The user case ends.

## **8 Post Conditions**

UC20.5.1 The End Strength Data for a Fiscal Year is successfully saved, retrieved, or modified.

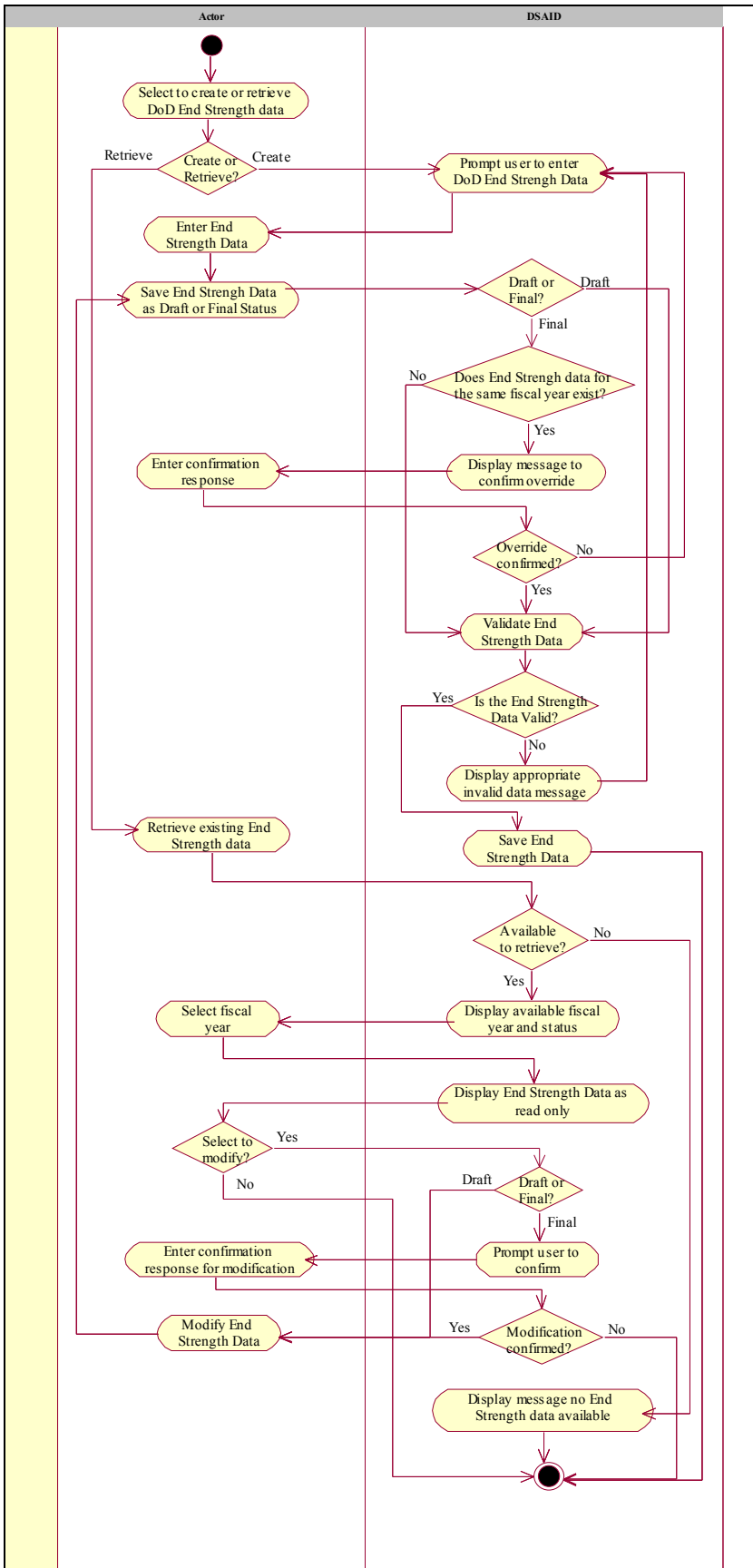
## **9 Extension Points**

N/A

## **10 Special Requirements**

N/A

## **11 Activity Diagram**





## **12 References**

REF5 FY08 Report on Sexual Assault in the Military

REF6 FY09 Annual Report Data Call Template

REF7 DoD SAPR Data Collection & Reporting System Concept Design Report