





INTERNATIONAL

3040 Cornwallis Road ■ PO Box 12194
Research Triangle Park, NC 27709-2194
0212343.001.008.002

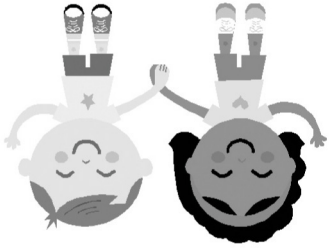
INTERNATIONAL

3040 Cornwallis Road ■ PO Box 12194
Research Triangle Park, NC 27709-2194
0212343.001.008.002

According to the Paperwork Reduction Act of 1995, an agency may not conduct or sponsor, and a person is not required to respond to, a collection of information unless it displays a valid OMB control number. The valid OMB control number for this information collection is 0584-0554 and the expiration date is 6/30/2014. The time required to complete this information collection is estimated to average 1 minute per response, including the time for reviewing instructions, searching existing data sources, gathering and maintaining the data needed, and completing and reviewing the collection of information.

According to the Paperwork Reduction Act of 1995, an agency may not conduct or sponsor, and a person is not required to respond to, a collection of information unless it displays a valid OMB control number. The valid OMB control number for this information collection is 0584-0554 and the expiration date is 6/30/2014. The time required to complete this information collection is estimated to average 1 minute per response, including the time for reviewing instructions, searching existing data sources, gathering and maintaining the data needed, and completing and reviewing the collection of information.

Happy New Year!

What Does Your Child Eat?



¿Qué come su niño?

2012

Happy New Year to You and Yours!
—The staff of the "What Does Your Child Eat?" Study

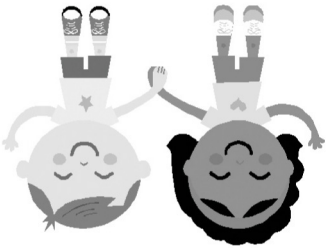
P.S. Any changes to your information below? If so, please contact us at USDA@sna.rti.org or 1-866-800-9176 (toll-free). We don't want you to miss the second survey and the chance to get \$15.

LABEL GOES HERE

[Label to include Case ID, Name, address, and phone#]

Happy New Year!

What Does Your Child Eat?



¿Qué come su niño?

2012

Happy New Year to You and Yours!
—The staff of the "What Does Your Child Eat?" Study

P.S. Any changes to your information below? If so, please contact us at USDA@sna.rti.org or 1-866-800-9176 (toll-free). We don't want you to miss the second survey and the chance to get \$15.

LABEL GOES HERE

[Label to include Case ID, Name, address, and phone#]