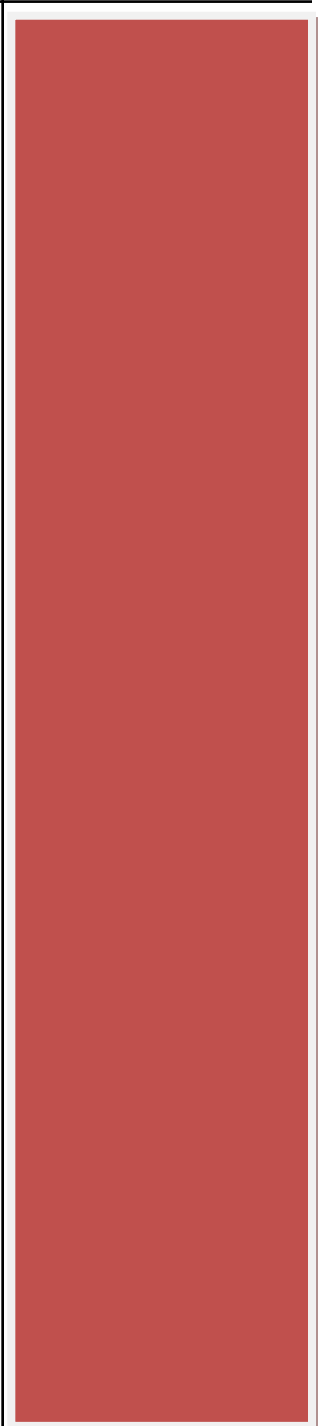


**Attachment F: School District Review Program  
Review Your School District Boundaries Online  
Using the TIGERweb Map Viewer**

**2013-2014**



2013-2014 School District Review Program  
Review Your School District Boundaries Online  
Using the TIGERweb Map Viewer

Table of Contents

Purpose.....3  
TIGERweb Versions .....4  
Getting Started .....4  
Selecting a Map Service.....6  
Moving around the Map.....7  
TIGERweb Symbology.....7  
Locating your school district using the Query Tool .....8  
Identify Tool .....10  
Changing Transparency .....10  
Reviewing your school district boundaries.....11  
Reporting your school district boundary corrections.....11  
Printing a map .....12

## Purpose

The purpose of the 2013-2014 School District Review Program (SDRP) is for state and local education officials to review the U.S. Census Bureau's 2011-2012 school district information and to provide updates and corrections to the school district names, Federal LEA ID numbers, boundaries, and the grade ranges for which a school district is financially responsible. More information about the SDRP is available from the Census Bureau's website: <http://www.census.gov/geo/partnerships/sdrp.html>.

If you are a local school district official, and determine that you have changes to report for the 2013-2014 SDRP, you will report the changes to your state SDRP mapping coordinator who will submit your changes to the Census Bureau. The SDRP Mapping Coordinator is the liaison between your state department of education and the Census Bureau. You can find contact information for your state mapping coordinator on the SDRP website at: <http://www.census.gov/geo/partnerships/sdrp.html>.

The Census Bureau is providing its TIGERweb web-based map viewer for participants to review their school district boundaries as they currently exist in our database. Participants can access the TIGERweb application by clicking on the following link: <http://tigerweb.geo.census.gov/>.

Please use this exciting new resource for comparing the school district boundaries in the Census Bureau's geographic database to your school district boundaries. You can use TIGERweb to quickly locate your local school districts and determine if you need to report boundary changes to the Census Bureau during the 2013-2014 SDRP. You need to report boundary changes if the TIGERweb map does not correctly depict your existing school district boundary or the boundary that will be in effect as of January 1, 2014. TIGERweb allows viewing, at street level detail, features such as roads, waterways, county, place, city, and school district boundaries.

If you are a state mapping coordinator, we ask that you please provide local education officials with these instructions, which can be obtained from the 2013-2014 School District Review Program website [http://www.census.gov/geo/www/schdist/sch\\_dist.html](http://www.census.gov/geo/www/schdist/sch_dist.html) under the Annotation Program Materials hyperlink.

After using TIGERweb to review your school district boundaries, you can print paper maps or capture screen images of the areas where boundaries require update, and you can annotate your changes and forward them to your state SDRP mapping coordinator for update and submission to the Census Bureau.

**The Census Bureau will not accept boundary changes for the 2013-2014 School District Review Program submitted directly to the Census Bureau annotated on maps printed using the TIGERweb map viewer.**

## TIGERweb versions

During early Fall 2013, the Census Bureau will replace the 2013 Boundary and Annexation Survey (BAS) Vintage TIGERweb application (Figure 1) with the newer 2013 American Community Survey (ACS) Vintage TIGERweb application (Figure 2) that includes additional map services (types of geographies).

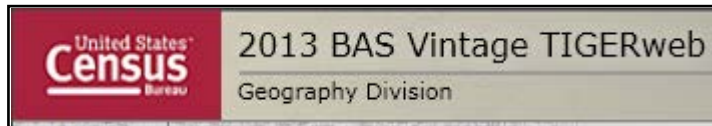


Figure 1: Logo for 2013 BAS Vintage TIGERweb



Figure 2: Logo for 2013 ACS Vintage TIGERweb available after September 2013.

A Vintage is a snapshot of the Census Bureau’s geographic database taken for use by local and state participants in Census Bureau programs such as the ACS and the BAS.

## Getting Started

Go to the TIGERweb Applications page at: <http://tigerweb.geo.census.gov/>. Click on the **TIGERweb** link under TIGERweb Applications on the left side of the screen. Do not click on the TIGERweb2010 link. The **TIGERweb** link opens the **2013 BAS Vintage TIGERweb** application (or the 2013 ACS Vintage TIGERweb after September 2013).

*Both 2013 BAS Vintage TIGERweb and 2013 ACS Vintage TIGERweb contain the geographic school district boundary updates for your state school districts submitted during the 2011-2012 SDRP. These are the school district boundaries that we want you to review.*

The TIGERweb application offers the ability to view:

- Roads, highways, streets, and railroads
- Rivers, lakes, streams and other “single-line” drainage
- Boundaries for legal and statistical geographic entities
- Selected special land use areas such as military reservations and national parks
- Satellite imagery


TIGERweb currently supports Microsoft Internet Explorer, Mozilla Firefox, and Google Chrome internet browsers.

The TIGERweb application requires your browser to:

- Have JavaScript enabled
- Allow popups
- Have the Microsoft Silverlight add-on installed (Internet Explorer only). If the Silverlight add-on is not found on opening the application (Figure 3), you will be directed to download and install the latest version of the add-on for Internet Explorer from the Microsoft.com website.



Figure 3: Silverlight not-installed message.

After opening the **2013 ACS Vintage TIGERweb viewer**, you will see the Map Layers panel (Figure 4). If the panel is not open, click on the Map Layers icon  at the top of the screen. You can move (drag) the panel away from the center of the screen, or minimize it by clicking on the arrow icon in the top right corner of the box.

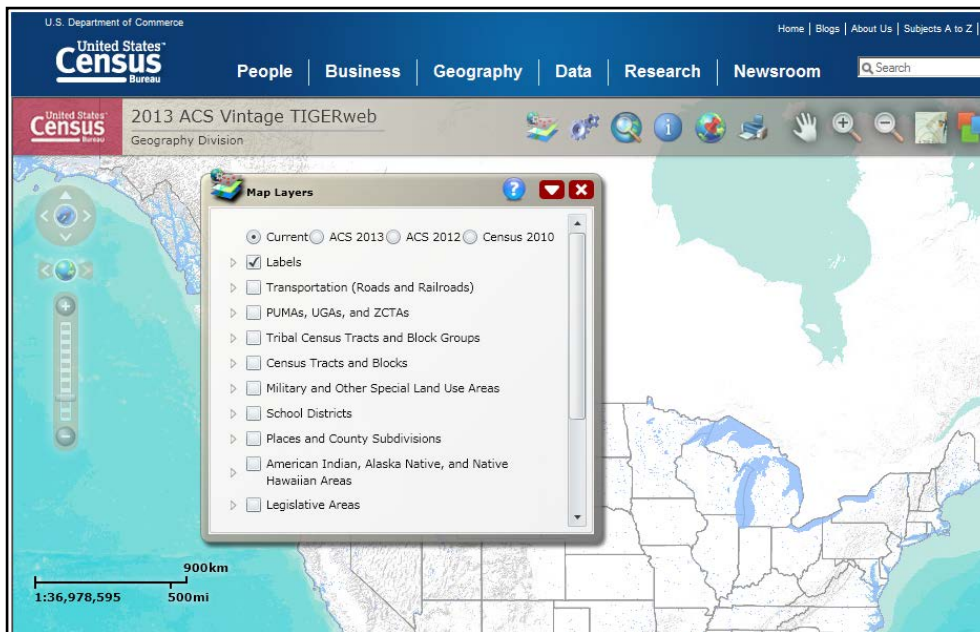


Figure 4: TIGERweb Opening screen with Map Layers panel

The Map Layers panel lists the map services (types of geographies) available in the TIGERweb application. The top row shows the current and previous vintages of **2013 ACS Vintage TIGERweb** (or 2013 BAS Vintage TIGERweb) geography that are available for display in the application (Figures 5 & 6). Select the **Current** radio button at the top of the panel, if not already selected, to view your school district boundary in the Census Bureau's geographic database. Labels, Hydrography, States and Counties are displayed by default at startup.

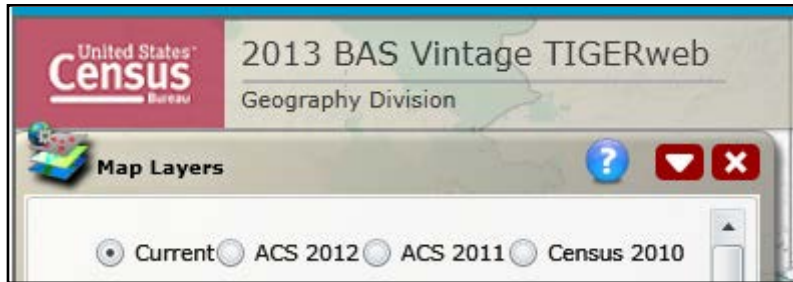


Figure 5: Vintages in 2013 BAS Vintage TIGERweb

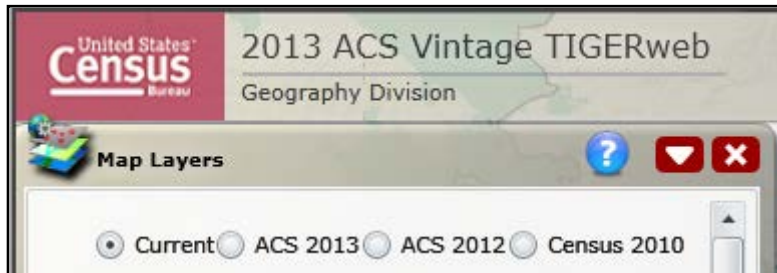


Figure 6: Vintages in 2013 ACS Vintage TIGERweb

The **Current** Vintage of Both 2013 BAS Vintage TIGERweb and 2013 ACS Vintage TIGERweb contain the geographic school district boundary updates for your state school districts submitted during the 2011-2012 SDRP. These are the boundaries that we want you to review.

Each map service consists of one or more layers that contain physical features such as roads and water features, as well as legal and statistical boundaries, such as census blocks, incorporated places, and minor civil divisions (MCD). Users can limit the amount of data on the map by selecting only the types of linear features and geographic entities they want to see.

### Selecting a Map Service

Click on the boxes next to the map service in the Map Layers panel (Figure 7) to select the Transportation, School Districts, and Places map services.

- ▶  Transportation (Roads and Railroads)
- ▶  School Districts
- ▶  Places and County Subdivisions

Figure 7: Transportation, School Districts, and Places map services are selected.

You will notice the school district and incorporated place boundaries do not immediately appear. This is because each map service has a range of zoom levels at which it will display. In other words, visibility is scale dependent.


## Moving around the map

Click on the Pan Tool icon at the top of the screen (Figure 8) to move around the map. You can also zoom in or out using the Zoom sliding bar on the left side of the screen or the wheel on your computer mouse. More detail appears as you zoom in, and county boundaries and county names start to appear.



Figure 8: Pan, Zoom In, and Zoom Out Tools

## TIGERweb Symbology

Click on the Legend Tool icon  at the top of the screen to view the symbology used for each layer. If the layer you selected does not appear in the legend, zoom in on the map for the feature to appear on the map and on the legend. Click on “Detailed Legend” to see at what zoom level the layers and labels appear.

If you want to see boundaries for only some types of school district, place, and county subdivision features, you can turn them off or on by clicking on the appropriate Map Service type in the Map Layers panel (Figure 9).

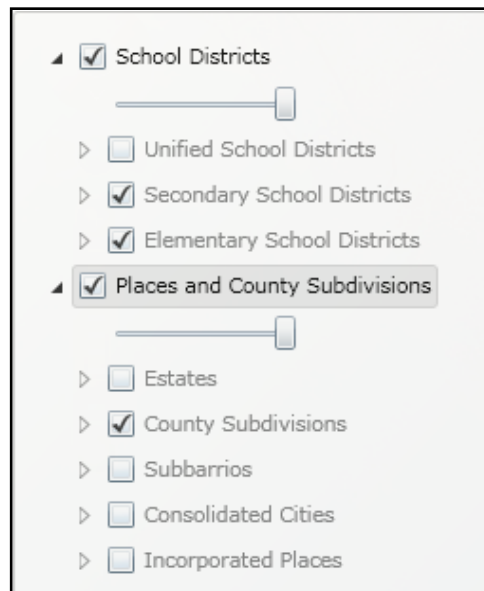



Figure 9: Elementary and Secondary school districts, and County Subdivisions are selected for display.

As you zoom into the map, more detail will appear. You can also turn on the Transportation Map Service to display road and rail features.

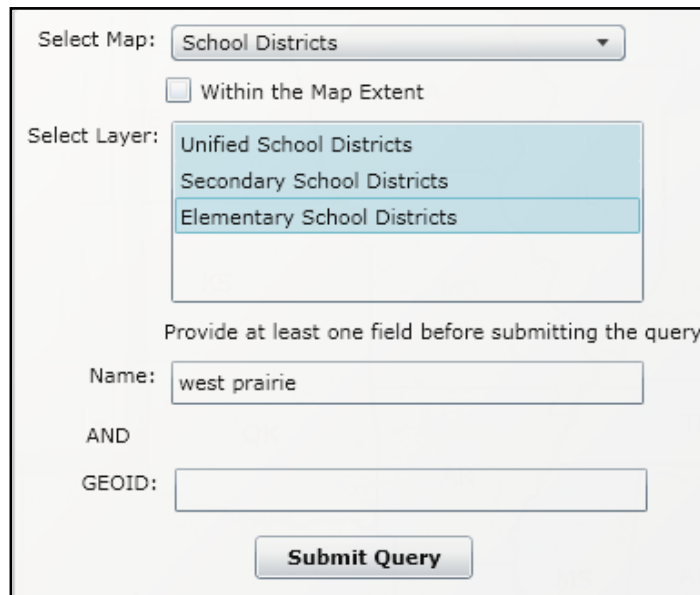
## Locating your School District using the Query Tool

You can quickly locate any school district using the Query Tool  at the top of the screen.

1. Click on the Query Tool to open the Query panel.
2. Click on the Select Map pull-down to select one of the following:
  - a. States and Counties map service to locate your County
  - b. Places and County Subdivisions to locate your County Subdivision (MCD) or Incorporated Place
  - c. School Districts to locate your elementary, secondary, or unified school district

As an example, we will use the Query Tool (Figure 10) to locate the West Prairie Community Unit School District 103, which is a unified school district in Illinois.

1. Select Map: School Districts
2. a. Select Layer: If you know the level (Elementary, Secondary, or Unified)
  - Click on it using the left mouse button.
  - Hold down the CTRL Key and click on each level – Unified, Secondary, and Elementary to highlight and search all three to locate your desired school district.



The screenshot shows a web-based query tool interface. At the top, there is a dropdown menu labeled "Select Map:" with "School Districts" selected. Below this is a checkbox labeled "Within the Map Extent" which is unchecked. Underneath is another dropdown menu labeled "Select Layer:" with three options: "Unified School Districts", "Secondary School Districts", and "Elementary School Districts". The "Elementary School Districts" option is currently selected. Below the dropdowns, there is a text prompt: "Provide at least one field before submitting the query". There are two input fields: "Name:" with the text "west prairie" entered, and "AND GEOID:" which is empty. At the bottom of the form is a button labeled "Submit Query".

Figure 10: Use Query to locate a school district using a partial name search.



The Query Tool (Figure 11) automatically zooms in to the area covered by the Query Result.

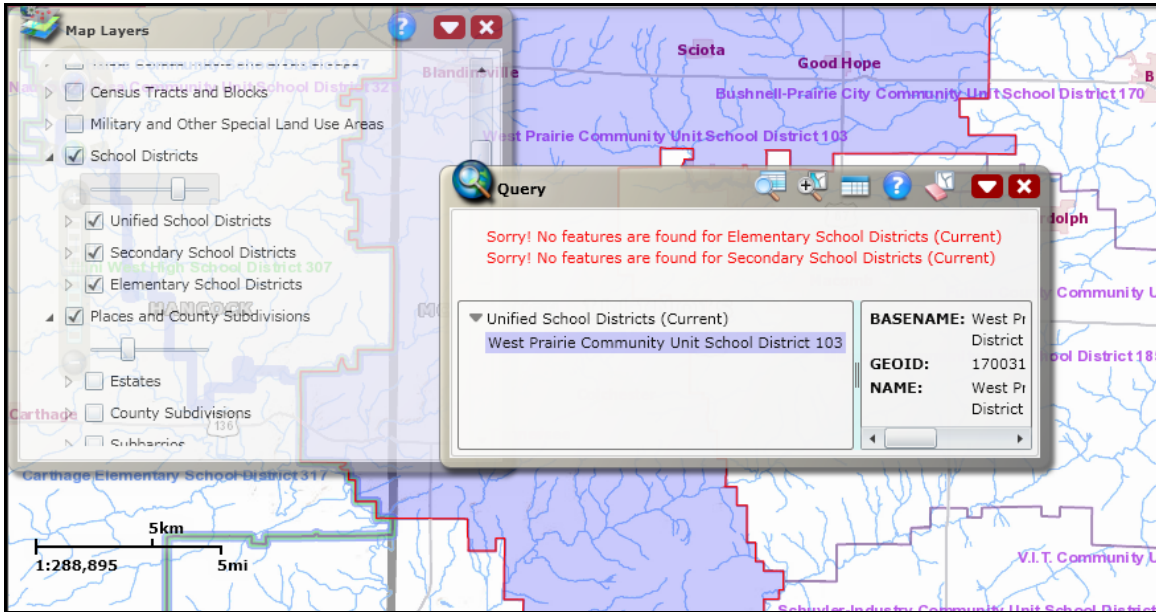


Figure 11: Query tool zooms to area covered by West Prairie school district.

The Map Layers panel can hide some of your map area so you should minimize the panel when not in use (Figure 12).

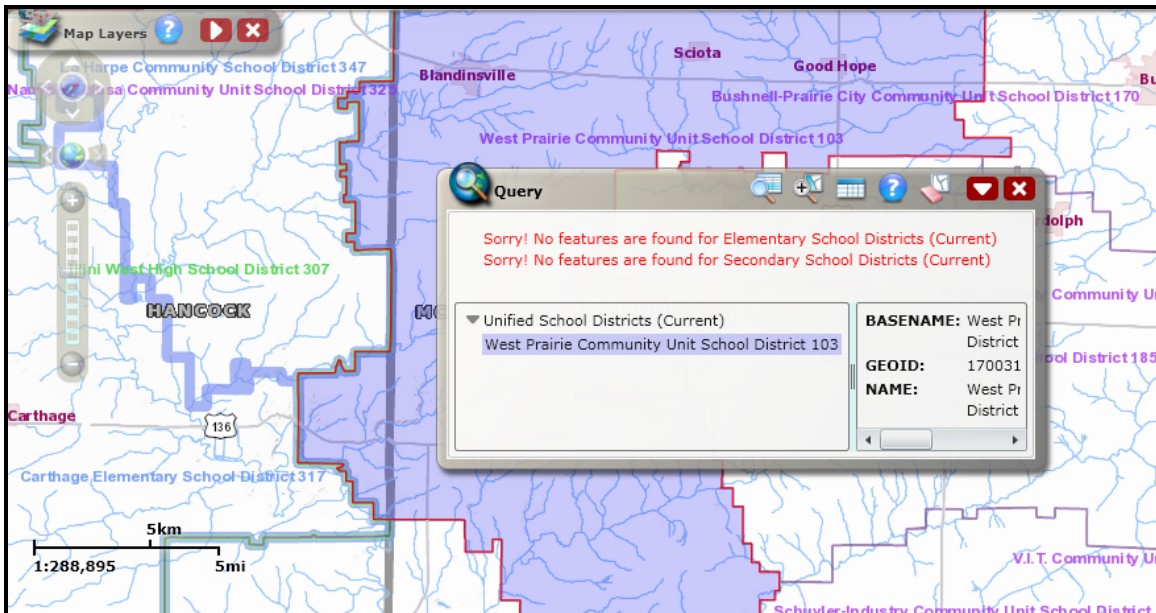



Figure 12: Move Map Layers panel out of the way to see more of map screen.

## Identify Tool

You can identify features on the map by using the Identify Tool . Click on the Identify tool at the top of the screen and then click on the area of the map you want to identify. In the Identify Results panel (Figure 13), you can click on any of the features to get attribute information. When you mouse over a feature, its area blinks on the map, and when you click on a feature, its area on the map is highlighted (Figure 14). The Identify Tool displays attribute information only for map services selected in the Map Layer panel.

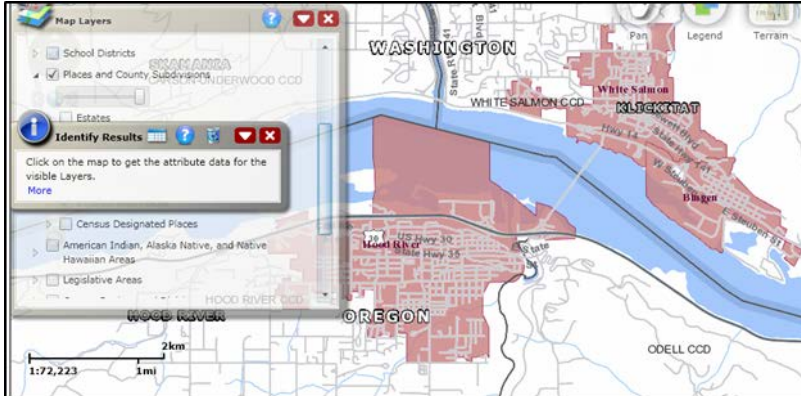


Figure 13: Open the Identify Tool to find attribute information for features on the screen.

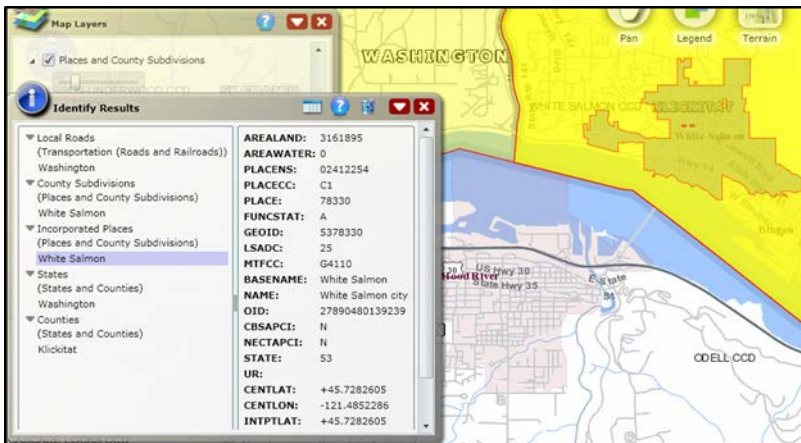


Figure 14: Identify Results shows attribute information for White Salmon in Klickitat, Washington.

## Changing Transparency

When multiple map services are displayed, one layer may obscure another layer. You can change the transparency of a map service in the Map Layer panel by moving the sliding bar (Figure 15) below the map service name to the left or right.

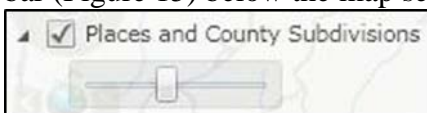


Figure 15: Move Map Layer panel slider to change transparency of a layer.

In the latter two examples above, moving the slider to the left increases the transparency of the Incorporated Place layer. The roads around the Town of Hood River on the Columbia River are now easier to view.

### Reviewing your school district boundaries

After you use the TIGERweb Query Tool to locate your school district, you can compare the TIGERweb map of your school district to a local source for your school district boundary.

You can use the TIGERweb Terrain Tool  to view satellite imagery for your school district (Figure 16) as well as the entire country. Click on the Terrain Tool at the top of the screen then click on the Imagery  icon to overlay your school district with satellite imagery.

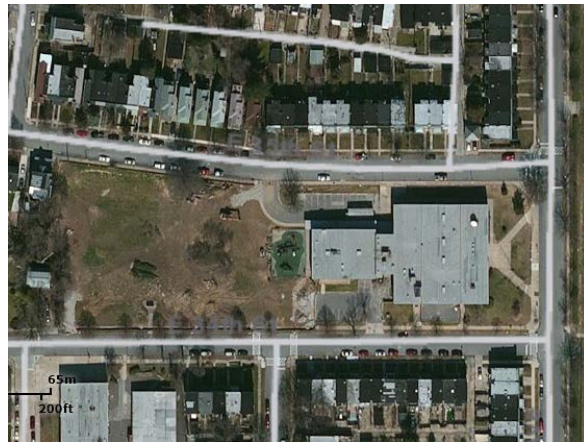


Figure 16: Viewing satellite imagery using the TIGERweb Terrain Tool.

This dual view allows you to see the relationship between the location of a boundary in our file to the location of real-world features such as roads and property lines.

You need to provide boundary update information to your state mapping coordinator if the TIGERweb map does not correctly depict the school district boundary that will be in effect as of January 1, 2014.

### Reporting your school district boundary corrections

If you are a local school district official, and determine that you have changes to report for the 2013-2014 SDRP, you will report the changes to your state mapping coordinator who will submit your changes to the Census Bureau. You can find contact information for your state mapping coordinator on the SDRP website at:

<http://www.census.gov/geo/partnerships/sdrp.html>.

## Printing a map

After using TIGERweb to review your school district boundary, you can use the application to print paper maps (Figure 17) or capture screen images of the areas where your boundary needs to be updated, annotate your changes, and forward them to your state mapping coordinator.

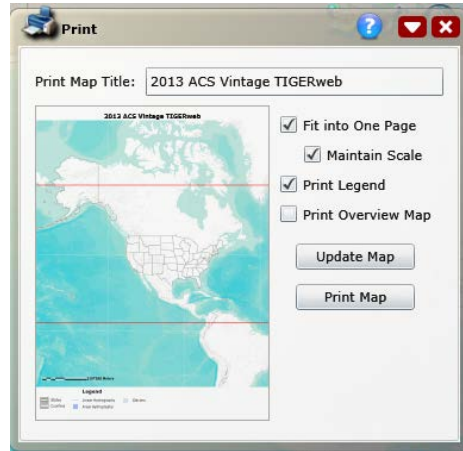


Figure 17: Print a section of boundary, mark changes, and submit to mapping coordinator.

**The Census Bureau will not accept boundary changes for the 2013-2014 School District Review Program submitted directly to the Census Bureau annotated on maps printed using the TIGERweb map viewer.**

If you are a state mapping coordinator, we ask that you provide local education officials with these instructions, which can be obtained from the 2013-2014 School District Review Program website: [http://www.census.gov/geo/www/schdist/sch\\_dist.html](http://www.census.gov/geo/www/schdist/sch_dist.html) under the Annotation Program Materials hyperlink.

For further information about the 2013-2014 School District Review Program, visit our website: <http://www.census.gov/geo/partnerships/sdrp.html>.