

Description: Submit Violation

If an address does not appear on ② the user can search for a location. We want to encourage selecting a location if possible, but do not want to get in the way of them entering one, so we prominently included the "Add Location" button. See next page.

Visually distinguish the retailer information from the potential violation details on ③

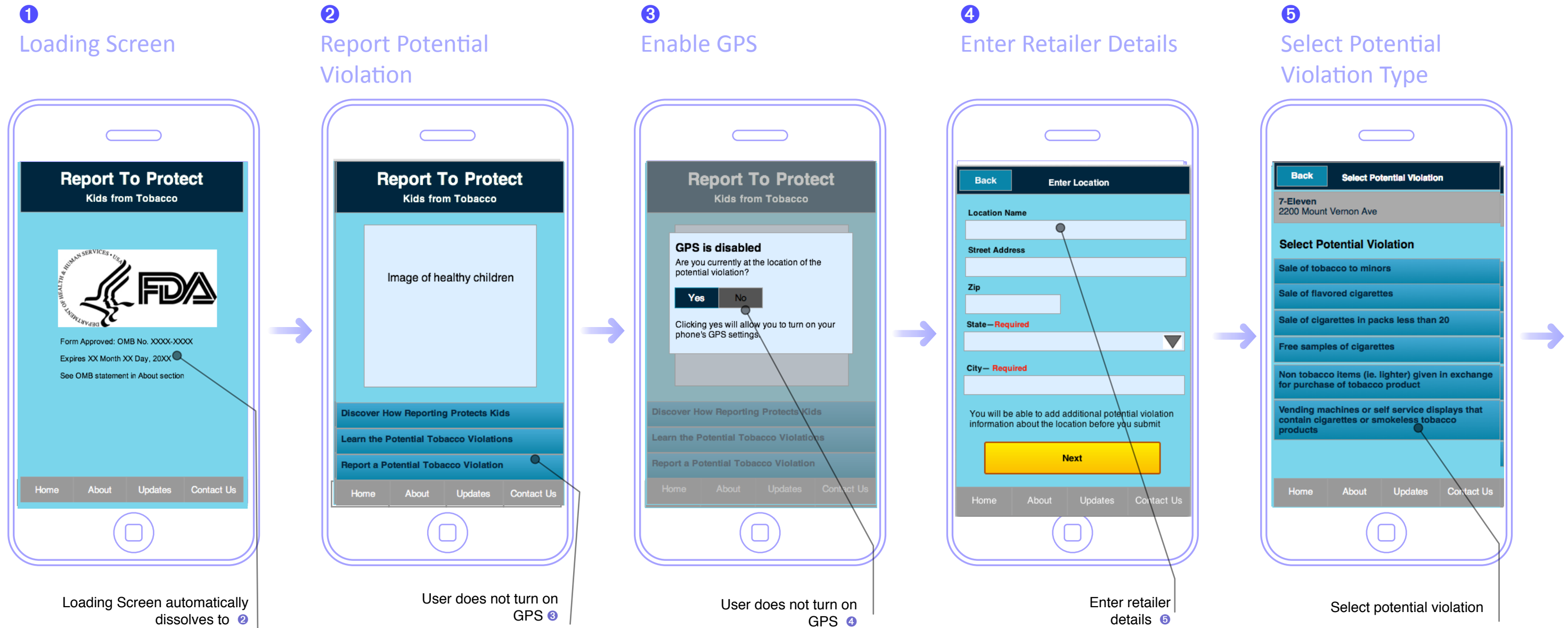
Potential violation type on ③ determines what fields appear on screen ④

Today's date is pre-populated on ④

The full potential violation type definition is included in the scrolling receipt on ④

Notes:

Can we make the brand a drop down with an options for Other/ Not Listed and one for Unsure? Leaving this as a free form text is going to lead to a a slower entry, confusion, and a lot more mistakes.



Description: Submit Violation Location Manually (or GPS off)

When the application loads, the HHS and FDA logos will appear briefly before dissolving to landing screen 2

The rest of the reporting flow remains the same.

If the user does not have their GPS turned on, they will see warning in 3. The user does not need to have GPS enabled to submit a comment.

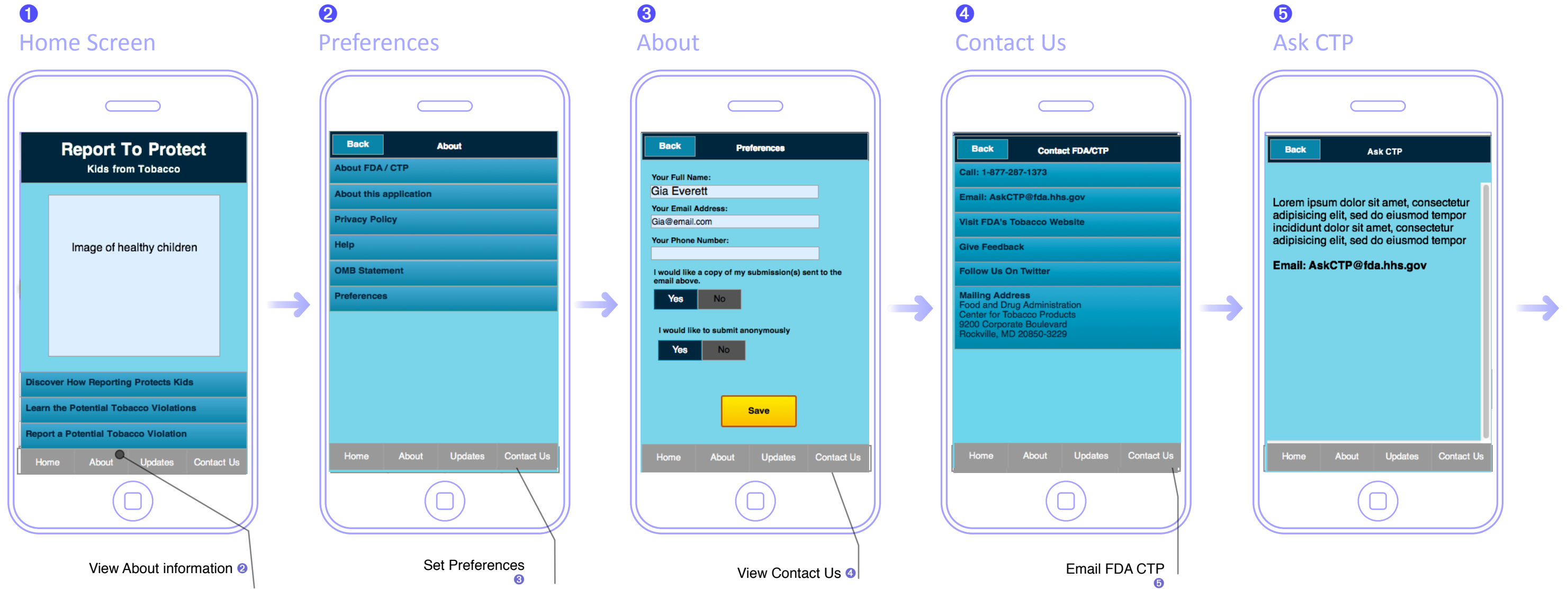
This is the form for entering a location whether from non-GPS version or clicking "Enter a Location" 4

Prepared by



Storyboard | CDC Mobile Tobacco Applications for CDC / FDA / CTP | Version 1.2 published Wed Feb 29 2012

Submit Violation Location Manually (or GPS off)



Description: Preferences & Footer Pages

A user can access information about this app including preferences and the OMB Statement by clicking About 2

A user can change their preferences at any point by visiting the about section and clicking preferences to view 3 The first time a user reports a violation, this information is collected prior to completing a violation unless the user submits anonymously.

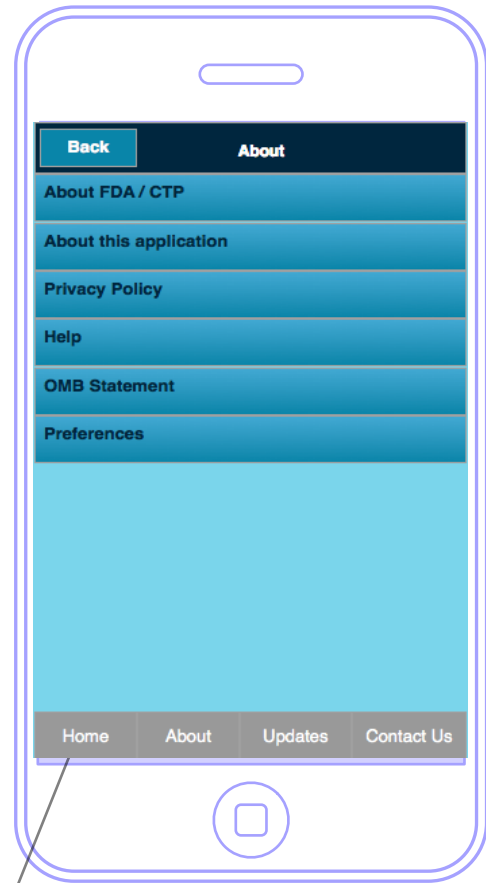
The phone number on 4 populates that number in the phone's interface when clicked. User can click "Call" to dial.

When the user taps the email address on 4 the system launches the default email program for the device and pre-populates the email address.

When the user taps the physical address on 4 the system launches the location on Google Maps

1

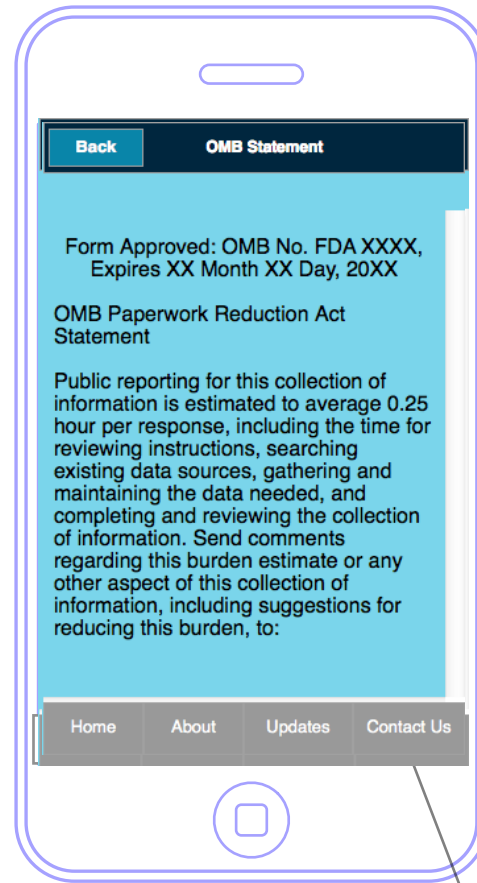
About Us



Displays OMB Statement

2

OMB Statement



User can scroll to read the entire statement

About Menu

The OMB Statement link takes the user to the detailed view of the OMB Paperwork Reduction Act Statement 2