

Transmission of material in this release is embargoed until  
8:30 a.m. (EDT) Wednesday, March 14, 2012

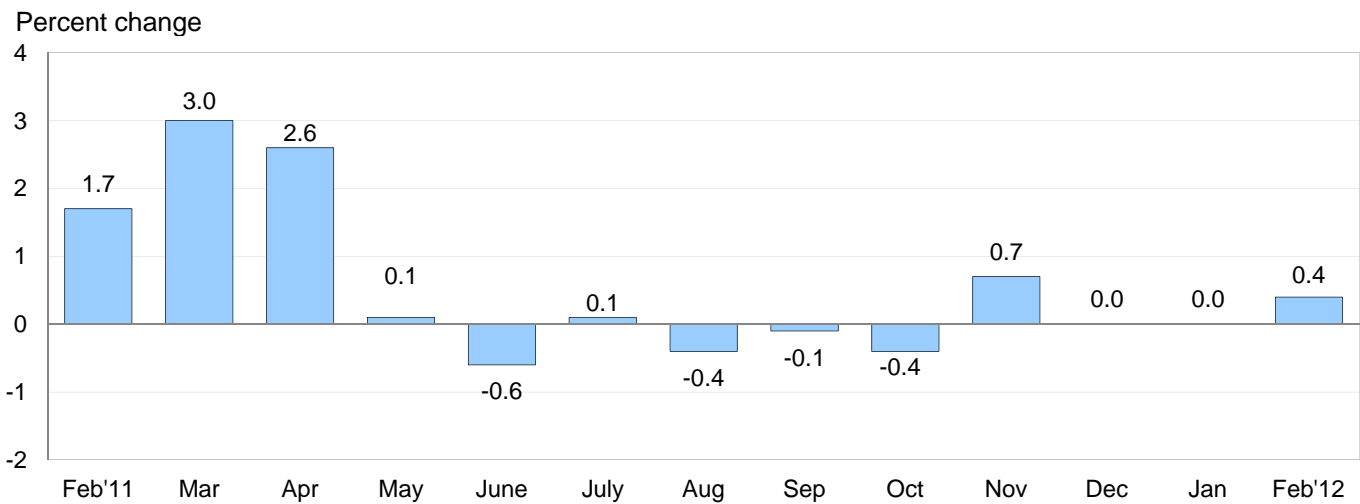
USDL-12-0449

Technical information: (202) 691-7101 • MXPinfo@bls.gov • www.bls.gov/mxp  
Media contact: (202) 691-5902 • PressOffice@bls.gov

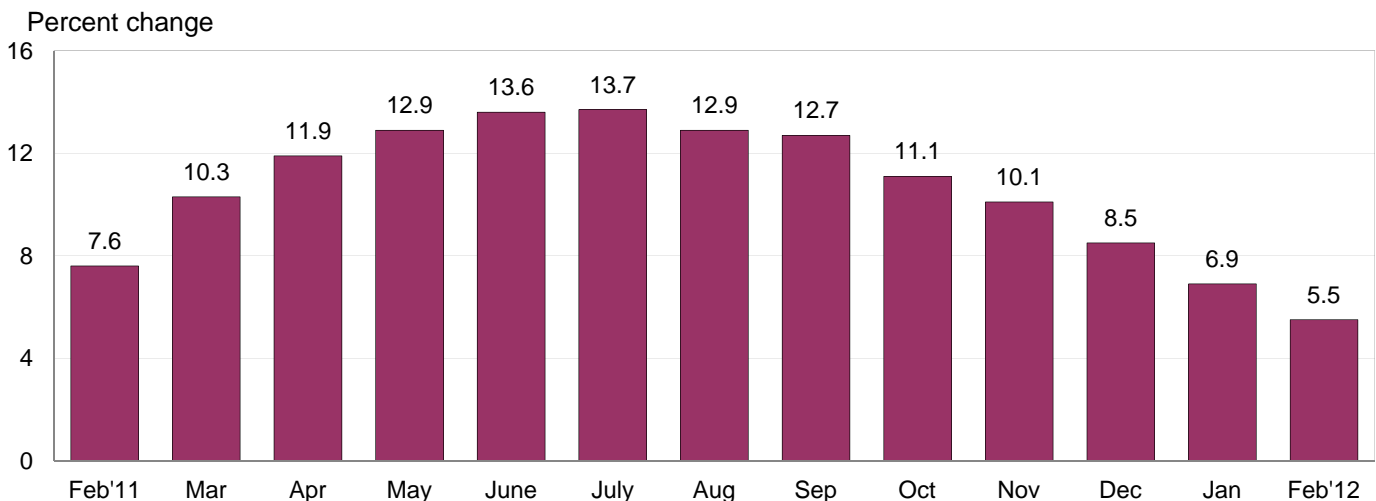
## U.S. IMPORT AND EXPORT PRICE INDEXES – FEBRUARY 2012

U.S. import prices increased 0.4 percent in February, the U.S. Bureau of Labor Statistics reported today, as higher fuel prices more than offset declining nonfuel prices. The price index for imports was unchanged in the two previous months. U.S. export prices also rose 0.4 percent in February after a 0.2 percent advance in January.

**Chart 1. One-month percent change in the Import Price Index: February 2011– February 2012**



**Chart 2. 12-month percent change in the Import Price Index: February 2011– February 2012**



**All Imports:** The 0.4 percent February increase marked only the second time that import prices have recorded a monthly advance greater than 0.1 percent since the index rose 2.6 percent in April 2011. Prices for overall imports increased 5.5 percent over the past 12 months, the smallest year-over-year rise since the index advanced 5.3 percent between December 2009 and December 2010.

**Fuel Imports:** The price index for import fuel increased 1.4 percent in February after remaining unchanged in January and falling 0.5 percent in December. Fuel prices advanced 15.2 percent for the year ended in February. Both the monthly and 12-month rise in fuel prices were driven by higher petroleum prices which advanced 1.8 percent in February and 18.4 percent over the past 12 months. In contrast, natural gas prices fell for the third consecutive month, declining a further 10.1 percent in February after recording decreases of 6.8 percent and 4.0 percent the two previous months. Prices for natural gas fell 36.5 percent over the past year, the largest 12-month drop in the index since a 49.1 percent decrease in October 2009.

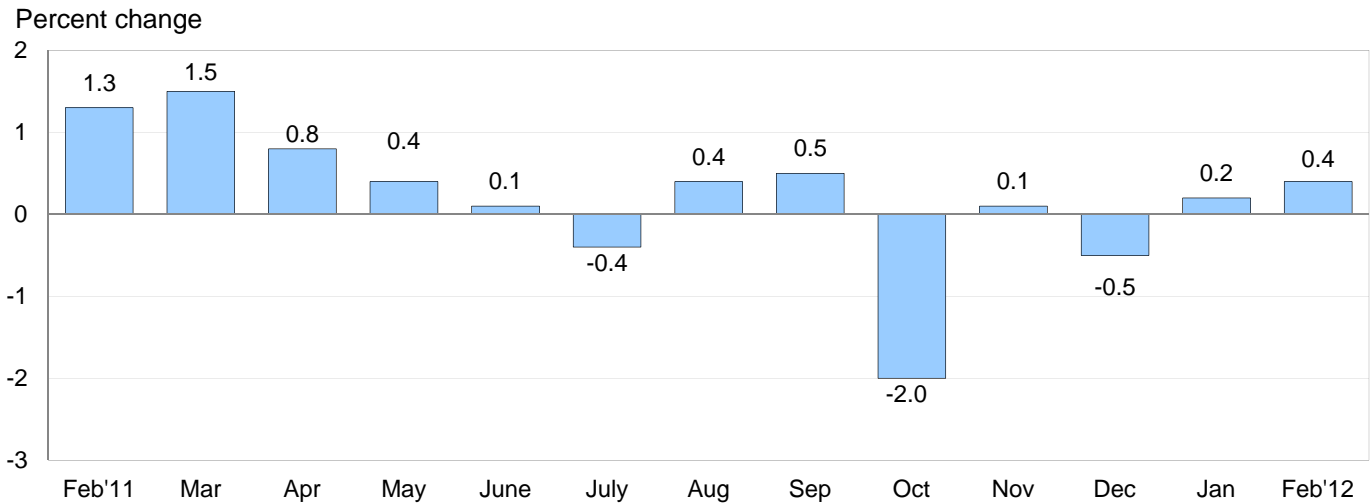
**All Imports Excluding Fuel:** Nonfuel import prices edged down 0.1 percent in February after ticking up 0.1 percent in January. In February, a 3.0 percent drop in food prices and a 0.1 percent decline in capital goods prices more than offset higher prices for nonfuel industrial supplies and materials. The price index for nonfuel imports rose 2.3 percent for the year ended in February.

**Table A. Percent changes**

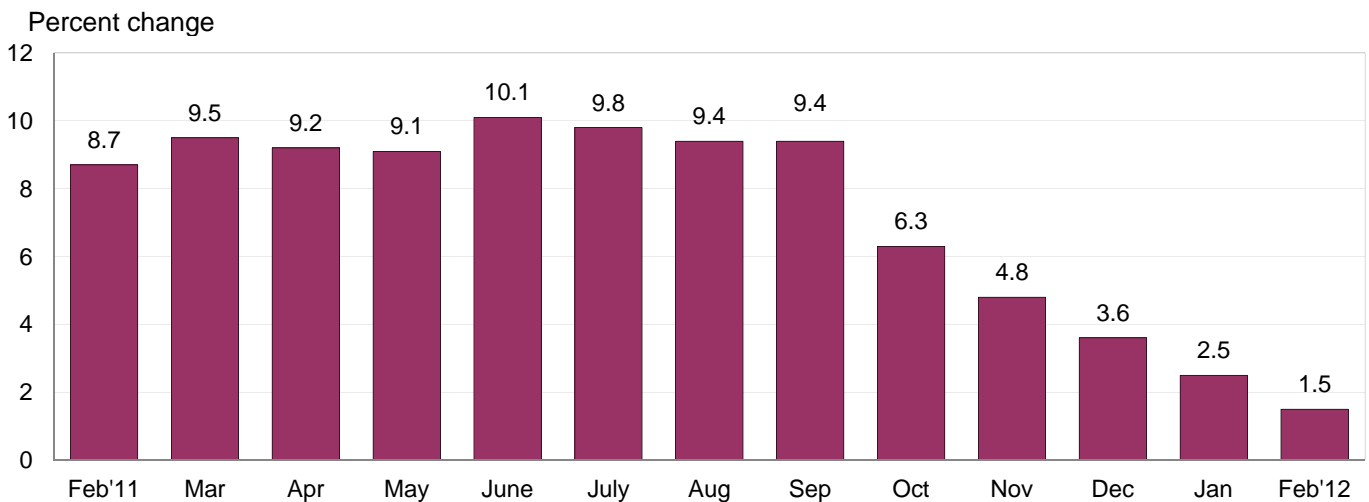
Month	IMPORTS			EXPORTS		
	All imports	Fuel imports	Nonfuel imports	All exports	Agricultural exports	Non-agricultural exports
<b>2011</b>						
February.....	1.7	5.6	0.5	1.3	4.6	1.0
March.....	3.0	9.7	0.8	1.5	2.2	1.4
April.....	2.6	7.6	0.8	0.8	-0.5	0.9
May.....	0.1	-0.6	0.3	0.4	-1.1	0.5
June.....	-0.6	-2.3	0.0	0.1	0.8	0.2
July.....	0.1	0.1	0.2	-0.4	-4.0	0.1
August.....	-0.4	-2.1	0.2	0.4	1.6	0.3
September.....	-0.1	-1.0	0.2	0.5	1.9	0.3
October.....	-0.4	-0.6	-0.2	-2.0	-6.5	-1.4
November.....	0.7	3.4 <sup>r</sup>	-0.2	0.1	1.7	-0.2 <sup>r</sup>
December.....	0.0 <sup>r</sup>	-0.5 <sup>r</sup>	0.2	-0.5	-2.3 <sup>r</sup>	-0.2
<b>2012</b>						
January.....	0.0 <sup>r</sup>	0.0 <sup>r</sup>	0.1	0.2	1.1	0.0
February.....	0.4	1.4	-0.1	0.4	-0.9	0.5
Feb. 2010 to 2011.....	7.6	21.1	3.8	8.7	33.6	6.3
Feb. 2011 to 2012.....	5.5	15.2	2.3	1.5	-6.2	2.6

r Revised

**Chart 3. One-month percent change in the Export Price Index: February 2011– February 2012**



**Chart 4. 12-month percent change in the Export Price Index: February 2011– February 2012**



**All Exports:** The 0.4 percent advance in export prices in February marked the largest monthly increase since a 0.5 percent rise in September. Higher nonagricultural prices more than offset a decline in the price index for agricultural exports. Despite recording the largest monthly increase in five months, overall export prices rose only 1.5 percent over the past 12 months, the smallest year-over-year advance since a 0.4 percent rise for the November 2008-09 period.

**Agricultural Exports:** Agricultural prices fell 0.9 percent in February after rising 1.1 percent the previous month. The decline was led by lower prices for fruits, cotton, and vegetables, down 6.8 percent, 7.1 percent, and 6.5 percent, respectively. Corn and soybean prices, which had driven the increase in agricultural prices in January recorded little movement in February. Prices for corn edged down 0.2 percent for the month, while soybeans prices rose 0.4 percent. Overall agricultural prices decreased 6.2 percent over the past year.

**All Exports Excluding Agriculture:** In contrast, prices for nonagricultural exports increased 0.5 percent in February after recording no change in January. Higher prices for nonagricultural industrial supplies and materials and each of the major finished goods areas contributed to the increase. The price index for nonagricultural exports advanced 2.6 percent over the past 12 months.

## SELECTED FEBRUARY HIGHLIGHTS

### Import Prices

**Nonfuel Industrial Supplies and Materials:** Nonfuel industrial supplies and materials prices increased 1.1 percent in February following a 0.9 percent decline the previous month. A turnaround in metals prices led the increase in February after contributing to the decline in January. In February, unfinished metals prices advanced 2.3 percent while finished metals prices rose 1.6 percent.

**Finished Goods:** Finished goods prices recorded little change overall in February. Prices for capital goods edged down 0.1 percent, driven by a 1.2 percent drop in the price index for oil drilling, mining, and construction machinery. Automotive vehicles prices and prices for consumer goods were unchanged.

**Foods, Feeds, and Beverages:** Prices for foods, feeds, and beverages fell 3.0 percent in February after rising 2.3 percent in January. The decline was led by a 25.5 percent drop in vegetable prices, which followed a 13.8 percent increase the previous month. The price indexes for coffee, food oils, and fish also recorded decreases in February.

**Imports by Locality of Origin:** Import prices from China ticked up 0.1 percent in February following a 0.3 percent increase the previous month. Prices for imports from China have not recorded a monthly decline since June 2010, and advanced 5.1 percent from June 2010 to February 2012. Import prices from Canada and Japan also rose in February, increasing 0.7 percent and 0.2 percent, respectively. In contrast, the price index for imports from Mexico fell 0.6 percent while prices of imports from the European Union edged down 0.1 percent.

**Transportation Services:** Import air passenger fares rose for the third consecutive month in February, advancing 0.3 percent after a 0.2 percent rise in January and a 1.6 percent increase in December. The February advance was primarily driven by a 1.3 percent increase in Asian fares. In contrast, import air freight prices fell for the sixth consecutive month in February, declining a further 1.2 percent.

### Export Prices

**Nonagricultural Industrial Supplies and Materials:** Nonagricultural industrial supplies and materials prices advanced 1.2 percent in February following a 0.4 percent decline in January. Higher prices for nonferrous metals, chemicals, and steelmaking materials—up 4.4 percent, 0.9 percent, and 7.0 percent, respectively—all contributed to the February increase in the price index for nonagricultural industrial supplies and materials.

**Finished Goods:** Each of the major finished goods categories increased for the second consecutive month in February. Capital goods prices rose 0.2 percent following a 0.3 percent advance in January, driven by a 1.0 percent increase in prices for transportation equipment, excluding motor vehicles. The price index for consumer goods advanced 0.3 percent for the second consecutive month, and prices for automotive vehicles rose 0.2 percent in February following a 0.2 percent increase the previous month.

**Transportation Services:** Export air passenger fares dropped 11.2 percent in February after rising 2.3 percent and 3.8 percent, respectively, in each of the two previous months. The decrease in February was primarily led by a 17.8 percent drop in Asian fares and an 11.4 percent decline in Latin American/Caribbean fares. Export air freight prices increased 0.3 percent in February after a 1.6 percent advance in January.

---

**Import and Export Price Index data for March 2012 are scheduled for release on Wednesday, April 11, 2012 at 8:30 a.m. (EDT).**

**Table 1. U.S. import price indexes and percent changes for selected categories of goods: February 2011 to February 2012**

[2000=100, unless otherwise noted]

Description	End Use	Relative importance Jan. 2012 <sup>1</sup>	Index		Percent change				
			Jan. 2012	Feb. 2012	Annual Feb. 2011 to Feb. 2012	Monthly			
						Oct. 2011 to Nov. 2011	Nov. 2011 to Dec. 2011	Dec. 2011 to Jan. 2012	Jan. 2012 to Feb. 2012
<b>All commodities.....</b>		100.000	142.2	142.7	5.5	0.7	0.0	0.0	0.4
<b>All imports excluding food and fuels (Dec. 2010=100).....</b>		70.454	103.2	103.5	2.4	-0.2	0.2	-0.2	0.3
<b>All imports excluding petroleum.....</b>		76.732	116.4	116.2	1.6	-0.3	0.1	0.0	-0.2
<b>All imports excluding fuels (Dec. 2001=100)..</b>		75.640	120.6	120.5	2.3	-0.2	0.2	0.1	-0.1
<b>Foods, feeds, &amp; beverages.....</b>	0	5.186	176.4	171.1	2.0	-0.2	-0.5	2.3	-3.0
Agricultural foods, feeds & beverages, excluding distilled beverages.....	00	4.025	198.9	191.8	1.5	0.1	-0.5	2.5	-3.6
Nonagricultural foods (fish, distilled beverages).....	01	1.161	125.5	124.3	4.0	-1.2	-0.3	1.5	-1.0
<b>Industrial supplies &amp; materials.....</b>	1	37.378	262.5	265.8	11.0	1.7	-0.4	-0.3	1.3
Industrial supplies & materials excluding petroleum.....		14.110	165.7	166.3	-0.5	-1.3	-0.5	-1.3	0.4
Industrial supplies & materials excluding fuels (Dec. 2001=100).....		13.018	188.2	190.2	3.3	-1.7	-0.2	-0.9	1.1
Industrial supplies & materials, durable.....		7.756	178.3	180.9	2.1	-2.5	0.0	-0.9	1.5
Industrial supplies & materials nondurable excluding petroleum.....		5.262	150.8	149.5	-3.5	0.1	-1.1	-1.8	-0.9
Fuels & lubricants.....	10	24.359	355.9	360.9	15.2	3.4	-0.5	0.0	1.4
Petroleum & petroleum products.....	100	23.267	398.3	405.4	18.4	3.5	-0.4	0.3	1.8
Crude.....	10000	17.472	406.9	412.8	17.2	4.4	0.3	-0.4	1.4
Fuels, n.e.s.-coals & gas.....	101	0.791	108.4	98.2	-34.0	2.5	-4.2	-5.8	-9.4
Gas-natural.....	10110	0.690	94.6	85.0	-36.5	3.6	-4.0	-6.8	-10.1
Paper & paper base stocks.....	11	0.579	112.5	112.1	-2.9	-0.9	-1.2	-2.0	-0.4
Materials associated with nondurable supplies & materials.....	12	4.790	174.3	175.1	7.3	-0.3	-0.4	-0.5	0.5
Selected building materials.....	13	0.969	131.3	131.9	1.6	-0.1	0.4	0.5	0.5
Unfinished metals related to durable goods.....	14	3.686	272.0	278.3	-0.4	-5.1	0.2	-2.1	2.3
Finished metals related to durable goods. . .	15	1.513	161.0	163.5	5.1	0.1	-0.2	-0.7	1.6
Nonmetals related to durable goods.....	16	1.481	114.7	114.8	3.1	-0.4	-0.5	-0.4	0.1
<b>Capital goods.....</b>	2	22.109	93.5	93.4	1.1	0.1	0.3	0.4	-0.1
Electric generating equipment.....	20	2.849	118.6	118.6	3.2	-0.1	-0.1	0.2	0.0
Nonelectrical machinery.....	21	17.648	86.7	86.7	0.3	0.0	0.3	0.3	0.0
Transportation equipment excluding motor vehicles (Dec. 2001=100).....	22	1.612	131.6	131.6	6.2	0.9	0.9	1.2	0.0
<b>Automotive vehicles, parts &amp; engines.....</b>	3	11.423	113.8	113.8	3.6	0.1	0.0	0.4	0.0
<b>Consumer goods, excluding automotives..</b>	4	23.904	107.3	107.3	2.3	0.1	0.3	-0.3	0.0
Nondurables, manufactured.....	40	11.460	114.3	114.0	2.8	0.1	0.0	0.0	-0.3
Durables, manufactured.....	41	11.158	99.8	99.9	1.0	0.1	0.3	-0.5	0.1
Nonmanufactured consumer goods.....	42	1.286	118.6	119.8	11.6	-0.5	4.2	-0.6	1.0

<sup>1</sup> Relative importance figures are based on 2010 trade values.

NOTES: Data may be revised in each of the three months after original publication.

Dash = Not available

**Table 2. U.S. export price indexes and percent changes for selected categories of goods: February 2011 to February 2012**

[2000=100, unless otherwise noted]

Description	End Use	Relative importance Jan. 2012 <sup>1</sup>	Index		Percent change				
			Jan. 2012	Feb. 2012	Annual	Monthly			
					Feb. 2011 to Feb. 2012	Oct. 2011 to Nov. 2011	Nov. 2011 to Dec. 2011	Dec. 2011 to Jan. 2012	Jan. 2012 to Feb. 2012
<b>All commodities</b> .....		100.000	132.3	132.8	1.5	0.1	-0.5	0.2	0.4
<b>Agricultural commodities</b> .....		10.743	202.7	200.8	-6.2	1.7	-2.3	1.1	-0.9
<b>All exports excluding food and fuels (Dec. 2010=100)</b> .....		81.327	102.3	102.9	1.4	-0.5	0.0	-0.1	0.6
<b>Nonagricultural commodities</b> .....		89.258	127.3	128.0	2.6	-0.2	-0.2	0.0	0.5
<b>Foods, feeds, &amp; beverages</b> .....	0	9.804	201.5	199.8	-1.8	2.1	-2.0	1.3	-0.8
Agricultural foods, feeds & beverages, excluding distilled beverages.....	00	9.095	203.7	201.8	-3.3	2.3	-2.2	1.2	-0.9
Nonagricultural foods (fish, distilled beverages).....	01	0.709	186.0	186.5	19.6	-1.2	0.7	1.2	0.3
<b>Industrial supplies &amp; materials</b> .....	1	34.540	183.6	185.7	1.9	-0.2	-0.8	-0.4	1.1
Industrial supplies & materials, durable.....		12.232	184.6	188.9	3.1	-1.5	0.5	-1.9	2.3
Industrial supplies & materials, nondurable.....		22.310	183.9	184.7	1.3	0.5	-1.5	0.4	0.4
Agricultural industrial supplies & materials..	10	1.648	200.7	198.5	-19.8	-1.4	-2.9	0.0	-1.1
<b>Nonagricultural industrial supplies &amp; materials</b> .....		32.893	183.2	185.4	3.3	-0.1	-0.7	-0.4	1.2
Fuels & lubricants.....	11	8.870	273.1	273.6	7.9	3.4	-2.9	1.2	0.2
Nonagricultural supplies & materials excluding fuels & building materials.....	12	23.092	171.8	174.7	1.9	-1.4	0.2	-1.1	1.7
Selected building materials.....	13	0.931	115.4	116.4	0.2	0.1	-0.6	-0.2	0.9
<b>Capital goods</b> .....	2	34.525	104.9	105.1	1.1	-0.1	0.1	0.3	0.2
Electrical generating equipment.....	20	3.543	112.9	113.3	2.4	-0.7	-0.1	0.1	0.4
Nonelectrical machinery.....	21	25.052	94.4	94.4	0.4	-0.1	0.0	0.2	0.0
Transportation equipment excluding motor vehicles (Dec. 2001=100).....	22	5.929	146.8	148.2	2.8	0.1	0.3	0.8	1.0
<b>Automotive vehicles, parts &amp; engines</b> .....	3	8.231	112.1	112.3	2.8	0.1	-0.1	0.2	0.2
<b>Consumer goods, excluding automotives</b> ..	4	12.900	117.1	117.4	3.7	-0.2	0.1	0.3	0.3
Nondurables, manufactured.....	40	5.954	114.7	114.9	1.6	-0.2	0.3	0.7	0.2
Durables, manufactured.....	41	5.355	113.3	113.8	1.7	-0.1	-0.1	0.1	0.4

<sup>1</sup> Relative importance figures are based on 2010 trade values.

NOTES: Data may be revised in each of the three months after original publication.

Dash = Not available

**Table 3. U.S. import price indexes and percent changes for selected categories of goods: February 2011 to February 2012**

[December 2005=100, unless otherwise noted]

Description	NAICS	Relative importance Jan. 2012 <sup>1</sup>	Index		Percent change				
			Jan. 2012	Feb. 2012	Annual	Monthly			
					Feb. 2011 to Feb. 2012	Oct. 2011 to Nov. 2011	Nov. 2011 to Dec. 2011	Dec. 2011 to Jan. 2012	Jan. 2012 to Feb. 2012
<b>Nonmanufactured articles.....</b>		20.852	173.7	174.6	11.5	3.5	-0.1	-0.5	0.5
<b>Agriculture, forestry, fishing and hunting...</b>	11	1.873	176.9	167.1	-4.4	-1.7	-0.2	1.0	-5.5
Crop production.....	111	1.351	186.6	171.0	-3.7	-1.4	0.2	2.7	-8.4
<b>Mining.....</b>	21	18.979	173.0	175.0	13.3	4.1	-0.1	-0.6	1.2
Mining (except oil and gas) (Dec. 2006=100).....	212	0.356	157.6	171.8	17.6	-2.7	-2.7	7.5	9.0
<b>Manufactured articles.....</b>		78.689	118.1	118.5	3.8	-0.1	-0.1	0.2	0.3
<b>Manufactured goods, part 1.....</b>	31	10.771	124.9	125.3	7.5	0.2	0.2	0.8	0.3
Food manufacturing.....	311	3.014	159.9	160.5	9.0	0.6	0.5	1.6	0.4
Beverage and tobacco product manufacturing.....	312	0.839	112.1	111.9	1.7	0.1	-0.1	0.2	-0.2
Textile product mills.....	314	0.876	117.8	117.8	8.4	-0.1	-0.1	-0.6	0.0
Apparel manufacturing.....	315	4.043	111.8	112.0	6.8	-0.1	-0.2	0.4	0.2
Leather and allied product manufacturing. . .	316	1.602	118.5	119.4	8.8	0.9	0.4	1.4	0.8
<b>Manufactured goods, part 2.....</b>	32	17.942	140.2	141.3	7.6	0.1	-0.9	0.4	0.8
Wood product manufacturing.....	321	0.573	108.1	108.8	0.2	-0.6	0.3	0.7	0.6
Paper manufacturing.....	322	1.072	110.3	110.0	-0.4	-0.2	-0.6	-1.3	-0.3
Petroleum and coal products manufacturing.....	324	4.945	183.3	189.0	25.7	1.1	-2.4	3.1	3.1
Chemical manufacturing.....	325	8.567	133.1	132.8	1.0	-0.4	-0.5	-0.9	-0.2
Plastics and rubber products manufacturing.....	326	1.873	127.2	127.2	6.4	0.1	-0.2	1.1	0.0
Nonmetallic mineral product manufacturing.....	327	0.822	129.1	129.4	2.9	0.3	0.3	0.5	0.2
<b>Manufactured goods, part 3.....</b>	33	49.977	109.9	110.1	1.6	-0.3	0.3	-0.1	0.2
Primary metal manufacturing.....	331	4.238	177.2	180.4	-0.7	-4.2	0.3	-2.5	1.8
Fabricated metal product manufacturing. . .	332	2.519	129.3	130.0	6.3	0.5	0.3	0.1	0.5
Machinery manufacturing.....	333	5.537	120.2	120.5	3.2	0.2	0.0	0.7	0.2
Computer and electronic product manufacturing.....	334	15.458	83.1	83.0	-1.9	0.0	0.4	0.2	-0.1
Electrical equipment, appliance, and component manufacturing.....	335	3.771	117.4	117.6	2.9	0.1	0.2	0.0	0.2
Transportation equipment manufacturing....	336	12.061	110.7	110.8	3.7	0.3	0.2	0.3	0.1
Furniture and related product manufacturing.....	337	1.292	112.9	112.8	4.3	0.1	-0.1	0.0	-0.1
Miscellaneous manufacturing.....	339	5.102	121.9	122.2	3.6	0.4	0.4	-1.1	0.2

<sup>1</sup> Relative importance figures are based on 2010 trade values.

NOTES: Data may be revised in each of the three months after original publication.

Dash = Not available

**Table 4. U.S. export price indexes and percent changes for selected categories of goods: February 2011 to February 2012**

[December 2005=100, unless otherwise noted]

Description	NAICS	Relative importance Jan. 2012 <sup>1</sup>	Index		Percent change				
			Jan. 2012	Feb. 2012	Annual	Monthly			
					Feb. 2011 to Feb. 2012	Oct. 2011 to Nov. 2011	Nov. 2011 to Dec. 2011	Dec. 2011 to Jan. 2012	Jan. 2012 to Feb. 2012
<b>Nonmanufactured articles.....</b>		8.377	165.9	162.9	-10.3	2.4	-2.8	0.3	-1.8
<b>Agriculture, forestry, fishing and hunting...</b>	11	6.130	190.6	188.4	-11.5	3.4	-3.2	2.2	-1.2
Crop production.....	111	5.719	197.9	195.1	-12.6	4.3	-3.4	2.5	-1.4
<b>Mining.....</b>	21	2.247	112.8	108.8	-6.2	-0.2	-1.6	-4.4	-3.5
Mining (except oil and gas).....	212	1.578	138.2	139.3	3.5	-0.9	-1.1	-2.2	0.8
<b>Manufactured articles.....</b>		88.636	120.1	120.7	3.2	-0.1	-0.2	0.3	0.5
<b>Manufactured goods, part 1.....</b>	31	6.977	142.3	142.8	2.7	-0.4	-0.8	-0.7	0.4
Food manufacturing.....	311	4.854	162.4	162.7	5.1	-0.5	-1.0	-0.2	0.2
Beverage and tobacco product manufacturing.....	312	0.546	114.1	115.5	0.9	1.4	-0.6	-0.8	1.2
Apparel manufacturing.....	315	0.421	119.8	119.8	8.5	1.1	1.5	1.0	0.0
<b>Manufactured goods, part 2.....</b>	32	26.533	133.5	134.7	4.7	0.5	-0.8	0.8	0.9
Wood product manufacturing.....	321	0.408	114.9	116.0	-2.7	-0.2	0.4	0.3	1.0
Paper manufacturing.....	322	1.842	118.8	118.6	-5.3	-1.7	-1.6	-0.7	-0.2
Petroleum and coal products manufacturing.....	324	6.258	167.5	171.4	11.4	4.3	-3.6	2.3	2.3
Chemical manufacturing.....	325	15.085	131.2	132.1	3.6	-0.5	0.3	0.2	0.7
Plastics and rubber products manufacturing.....	326	2.185	116.7	117.1	7.4	-0.1	-0.1	0.6	0.3
Nonmetallic mineral product manufacturing.....	327	0.755	111.0	110.9	0.4	-0.1	-0.3	0.3	-0.1
<b>Manufactured goods, part 3.....</b>	33	55.126	112.8	113.1	2.4	-0.4	0.2	0.1	0.3
Primary metal manufacturing.....	331	4.851	172.5	174.7	4.4	-2.7	1.3	-4.1	1.3
Fabricated metal product manufacturing. ....	332	2.636	129.4	127.6	1.6	0.5	0.2	0.3	-1.4
Machinery manufacturing.....	333	11.144	120.2	120.3	4.0	0.2	0.0	2.0	0.1
Computer and electronic product manufacturing.....	334	14.404	89.3	89.3	-1.5	-0.2	0.0	-0.2	0.0
Electrical equipment, appliance, and component manufacturing.....	335	3.209	111.6	112.2	1.9	-0.4	-0.4	0.5	0.5
Transportation equipment manufacturing....	336	13.361	115.6	116.2	2.7	0.1	0.2	0.4	0.5
Miscellaneous manufacturing.....	339	5.231	123.3	123.7	8.6	-0.2	-0.1	-0.6	0.3

<sup>1</sup> Relative importance figures are based on 2010 trade values.

NOTES: Data may be revised in each of the three months after original publication.

Dash = Not available



**Table 5. U.S. import price indexes and percent changes for selected categories of goods: February 2011 to February 2012**

[2000=100, unless otherwise noted]

Description	Harmoni- zied system	Relative importance Jan. 2012 <sup>1</sup>	Index		Percent change				
			Jan. 2012	Feb. 2012	Annual	Monthly			
					Feb. 2011 to Feb. 2012	Oct. 2011 to Nov. 2011	Nov. 2011 to Dec. 2011	Dec. 2011 to Jan. 2012	Jan. 2012 to Feb. 2012
<b>Live animals; animal products.....</b>	I	1.178	169.8	168.5	3.3	-0.6	-0.2	2.0	-0.8
Meat and edible meat offal.....	02	0.274	220.8	218.2	5.5	3.0	-0.5	2.6	-1.2
Fish and crustaceans, molluscs and other aquatic invertebrates.....	03	0.622	124.2	122.4	0.9	-2.4	-0.8	2.2	-1.4
<b>Vegetable products.....</b>	II	1.701	218.0	204.7	4.8	-1.1	1.8	3.0	-6.1
Edible vegetables, roots, and tubers.....	07	0.365	365.9	248.8	-15.1	0.5	-4.1	19.4	-32.0
Edible fruit and nuts; peel of citrus fruit or melons.....	08	0.461	116.9	118.9	-4.3	-0.6	-0.2	2.9	1.7
Coffee, tea, mate and spices.....	09	0.455	298.8	288.8	23.9	-1.0	2.9	1.0	-3.3
<b>Animal or vegetable fats and oils (Dec. 2009=100).....</b>	III	0.263	135.7	130.6	-17.0	2.1	1.6	1.2	-3.8
<b>Prepared foodstuffs, beverages, and tobacco.....</b>	IV	2.372	158.3	158.3	5.2	0.3	-0.6	0.6	0.0
Cocoa and cocoa preparations (Dec. 2009=100).....	18	0.182	85.4	86.9	-15.9	2.2	-12.0	0.6	1.8
Preparations of cereals, flour, starch or milk; bakers' wares (Dec. 2007=100).....	19	0.222	124.9	124.8	-1.7	-0.1	-0.2	-0.3	-0.1
Preparations of vegetables, fruit, nuts, or other parts of plants.....	20	0.356	177.8	176.1	15.4	4.2	2.4	2.1	-1.0
Beverages, spirits, and vinegar.....	22	0.795	122.8	122.6	2.3	0.0	-0.1	0.2	-0.2
<b>Mineral products.....</b>	V	24.059	358.0	363.6	15.8	3.3	-0.5	0.1	1.6
Mineral fuels, oils and residuals, bituminous substances and mineral waxes.....	27	23.712	353.7	358.7	15.5	3.4	-0.5	0.0	1.4
<b>Products of the chemical or allied industries.....</b>	VI	8.095	147.9	146.7	0.3	0.2	-0.5	-1.0	-0.8
Inorganic chemicals.....	28	0.902	365.7	353.8	0.7	2.7	-1.8	-5.2	-3.3
Organic chemicals.....	29	2.405	137.8	138.4	1.2	-0.4	-0.3	0.5	0.4
Pharmaceutical products.....	30	2.936	114.7	113.1	-2.7	0.0	0.1	-1.5	-1.4
Fertilizers (Dec. 2009=100).....	31	0.434	137.8	138.6	14.5	0.6	-4.2	-4.8	0.6
Tanning extracts; dye, pigments, varnish, paints & putty (Dec. 2011=100).....	32	0.178	103.4	103.1	-	-	-	3.4	-0.3
Essential oils and resinoids (Dec. 2001=100).....	33	0.413	125.4	124.0	0.2	-0.6	-0.7	0.7	-1.1
Miscellaneous chemical products.....	38	0.472	103.4	103.2	-3.3	-1.6	0.3	-1.2	-0.2
<b>Plastics and articles thereof; rubber and articles thereof.....</b>	VII	3.064	151.9	152.2	4.2	-0.5	-0.5	-0.1	0.2
Plastics and articles thereof.....	39	1.859	143.2	142.9	5.2	-0.4	0.6	0.2	-0.2
Rubber and articles thereof.....	40	1.205	168.6	170.1	2.7	-0.7	-2.3	-0.4	0.9
<b>Raw hides, skins, leather, furskins, travel goods, etc.....</b>	VIII	0.579	125.6	126.8	8.6	0.5	0.1	1.9	1.0
Articles of leather; travel goods, bags, etc. of various materials.....	42	0.532	126.3	127.6	9.1	0.6	0.1	2.0	1.0
<b>Wood, wood charcoal, cork, straw, basketware and wickerwork.....</b>	IX	0.602	130.7	131.5	0.5	-0.5	0.2	0.6	0.6
<b>Woodpulp, recovered paper, and paper products.....</b>	X	1.173	113.0	113.0	-0.4	-0.1	-0.6	-1.1	0.0
Pulp wood, waste paper, and paperboard (Dec. 2011=100).....	47	0.169	95.6	96.1	-	-	-	-4.4	0.5
Paper and paperboard; articles of paper pulp, paper or paperboard.....	48	0.794	109.1	108.7	1.3	0.5	-0.2	-0.5	-0.4
<b>Textile and textile articles.....</b>	XI	5.190	115.7	116.0	7.2	-0.2	-0.2	0.3	0.3
Articles of apparel and clothing accessories, knitted or crocheted.....	61	2.010	106.5	106.6	3.9	-0.5	-0.2	0.3	0.1

See footnotes at end of table.

**Table 5. U.S. import price indexes and percent changes for selected categories of goods: February 2011 to February 2012 — Continued**  
 [2000=100, unless otherwise noted]

Description	Harmonized system	Relative importance Jan. 2012 <sup>1</sup>	Index		Percent change				
			Jan. 2012	Feb. 2012	Annual	Monthly			
					Feb. 2011 to Feb. 2012	Oct. 2011 to Nov. 2011	Nov. 2011 to Dec. 2011	Dec. 2011 to Jan. 2012	Jan. 2012 to Feb. 2012
Articles of apparel and clothing accessories, not knitted or crocheted.....	62	1.899	117.6	118.0	11.2	0.2	-0.2	0.7	0.3
Made-up or worn textile articles.....	63	0.644	112.0	112.1	9.3	-0.2	0.0	-0.7	0.1
<b>Headgear, umbrellas, artificial flowers, etc..</b> ..	XII	1.311	117.7	118.1	7.5	1.1	0.5	0.6	0.3
Footwear and parts of such articles.....	64	1.114	116.7	117.1	7.6	1.0	0.6	0.6	0.3
<b>Stone, plaster, cement, asbestos, ceramics, glass etc.....</b>	XIII	0.745	131.2	131.1	2.9	0.3	0.2	0.2	-0.1
Articles of stone, plaster, cement, asbestos, or mica (Dec. 2001=100).....	68	0.238	124.1	124.3	3.3	0.2	0.1	-0.1	0.2
Ceramic products.....	69	0.224	141.2	141.2	1.4	0.0	0.1	0.0	0.0
Glass and glassware.....	70	0.283	126.5	126.1	3.5	0.6	0.4	0.6	-0.3
<b>Pearls, stones, precious metals, imitation jewelry, and coins.....</b>	XIV	3.275	203.1	206.1	13.7	-2.1	2.6	-1.9	1.5
<b>Base metals and articles of base metals.....</b>	XV	4.830	189.3	191.1	-1.9	-2.2	-0.5	0.1	1.0
Iron and steel.....	72	1.134	246.8	245.2	-0.4	-2.9	-0.6	0.2	-0.6
Articles of iron or steel.....	73	1.406	161.3	160.6	4.1	0.0	-0.1	-0.1	-0.4
Copper and articles thereof.....	74	0.437	344.2	367.1	-12.0	-5.5	0.4	1.3	6.7
Nickel and articles thereof (Dec. 2009=100)...	75	0.135	104.9	111.2	-19.4	-7.5	-2.4	-1.6	6.0
Aluminum and articles thereof.....	76	0.695	138.3	141.0	-5.5	-2.6	-2.4	-1.3	2.0
Tools, implements, cutlery, spoons and forks, of base metal; parts thereof.....	82	0.356	126.8	126.7	3.5	0.0	0.4	2.1	-0.1
Miscellaneous articles of base metal.....	83	0.398	132.3	133.0	3.6	0.0	-0.1	0.5	0.5
<b>Machinery, electrical equipment, TV image and sound recorders, parts, etc.....</b>	XVI	24.649	86.2	86.2	0.3	0.1	0.2	0.3	0.0
Machinery and mechanical appliances; parts thereof.....	84	12.362	89.8	89.9	1.2	0.2	0.2	0.9	0.1
Electrical machinery and equip, sound and TV recorders & reproducers, parts.....	85	12.287	82.8	82.7	-0.5	-0.1	0.4	-0.1	-0.1
<b>Vehicles, aircraft, vessels and associated transport equipment.....</b>	XVII	10.069	115.0	115.1	3.6	0.0	0.1	0.3	0.1
Motor vehicles and their parts.....	87	9.296	114.2	114.3	3.9	0.0	0.2	0.2	0.1
Aircraft, spacecraft, and parts thereof (Dec. 2002=100).....	88	0.686	116.1	116.2	0.6	0.0	0.0	0.3	0.1
<b>Optical, photo, measuring, medical &amp; musical instruments; &amp; timepieces.....</b>	XVIII	3.167	103.8	103.9	-0.3	0.2	0.5	-2.1	0.1
Optical, photographic, measuring and medical instruments.....	90	2.917	101.3	101.5	-0.5	0.1	0.5	-2.2	0.2
Clocks and watches and parts thereof.....	91	0.189	127.6	127.6	2.0	-0.2	-0.1	-0.1	0.0
<b>Miscellaneous manufactured articles.....</b>	XX	3.623	111.3	111.4	3.1	0.0	0.0	-0.3	0.1
Furniture & stuffed furnishings; lamps & lighting fittings, nesoi; prefab bldgs.....	94	1.922	114.5	114.4	3.2	0.0	-0.1	-0.6	-0.1
Toys, games and sports equipment; parts and accessories thereof.....	95	1.505	104.8	104.9	3.0	0.1	0.1	0.2	0.1
Miscellaneous manufactured articles.....	96	0.196	132.6	133.5	4.3	0.0	-0.4	-0.1	0.7

<sup>1</sup> Relative importance figures are based on 2010 trade values.

NOTES: Data may be revised in each of the three months after original publication.

Dash = Not available

**Table 6. U.S. export price indexes and percent changes for selected categories of goods: February 2011 to February 2012**

[2000=100, unless otherwise noted]

Description	Harmoni- zied system	Relative importance Jan. 2012 <sup>1</sup>	Index		Percent change				
			Jan. 2012	Feb. 2012	Annual	Monthly			
					Feb. 2011 to Feb. 2012	Oct. 2011 to Nov. 2011	Nov. 2011 to Dec. 2011	Dec. 2011 to Jan. 2012	Jan. 2012 to Feb. 2012
<b>Live animals; animal products.....</b>	I	1.939	205.7	204.1	10.9	-0.1	-0.1	-1.0	-0.8
Meat & edible meat offal (Dec. 2006=100). . .	02	1.119	168.6	168.8	11.3	0.2	-0.6	-0.8	0.1
Fish and crustaceans, molluscs and other aquatic invertebrates.....	03	0.405	202.1	202.1	21.6	-1.0	2.0	0.6	0.0
<b>Vegetable products.....</b>	II	5.596	235.9	233.5	-6.6	4.8	-2.4	1.6	-1.0
Edible fruit and nuts; peel of citrus fruit or melons.....	08	0.832	132.3	127.2	-5.2	4.8	6.7	-4.6	-3.9
Cereals.....	10	2.172	279.8	279.4	-5.7	6.3	-7.1	3.2	-0.1
Oilseeds and misc. grains, seeds, fruits, plants, straw and fodder.....	12	1.979	243.3	244.6	-10.0	4.1	-3.3	5.2	0.5
<b>Animal or vegetable fats and oils (Dec. 2009=100).....</b>	III	0.474	147.3	144.4	-8.1	-1.8	-1.7	1.1	-2.0
<b>Prepared foodstuffs, beverages, and tobacco.....</b>	IV	2.596	149.0	150.1	1.8	-1.3	-1.1	0.1	0.7
Preparations of vegetables, fruit, nuts or other parts of plants (Dec. 2009=100).....	20	0.321	109.6	110.0	4.7	0.2	-0.9	0.4	0.4
Beverages, spirits, and vinegar (Dec. 2008=100).....	22	0.391	106.0	105.9	1.6	-0.3	0.1	0.8	-0.1
Residues and waste from the food industries; prepared animal feed.....	23	0.708	202.2	205.0	-6.4	-4.7	-2.4	-1.7	1.4
<b>Mineral products.....</b>	V	8.812	320.6	322.8	7.4	2.9	-2.8	0.8	0.7
Mineral fuels, oils and residuals, bituminous substances and mineral waxes.....	27	8.201	317.5	318.6	8.2	3.2	-3.1	1.1	0.3
<b>Products of the chemical or allied industries.....</b>	VI	12.306	154.5	155.2	3.5	0.3	0.2	-0.3	0.5
Inorganic chemicals.....	28	0.977	178.8	177.6	-8.7	0.2	1.2	-9.7	-0.7
Organic chemicals.....	29	3.474	167.6	170.8	6.6	0.4	0.8	0.5	1.9
Pharmaceutical products.....	30	3.183	124.6	124.8	0.5	-0.2	-0.4	0.8	0.2
Essential oils and resinoids; perfumery cosmetic or toilet preparations.....	33	0.761	134.9	135.3	6.0	-0.3	0.2	1.1	0.3
Soap; lubricants; waxes, polishing or scouring products; candles, pastes.....	34	0.474	124.1	122.9	-0.1	1.3	-0.1	-0.5	-1.0
Miscellaneous chemical products.....	38	1.789	153.8	153.7	5.9	0.1	0.4	1.9	-0.1
<b>Plastics and articles thereof; rubber and articles thereof.....</b>	VII	5.467	147.7	149.3	4.3	-2.3	-0.1	0.3	1.1
Plastics and articles thereof.....	39	4.399	138.9	140.1	2.5	-2.0	0.1	0.7	0.9
Rubber and articles thereof.....	40	1.068	188.7	192.3	12.1	-3.8	-1.1	-1.3	1.9
<b>Raw hides, skins, leather, furskins, travel goods, etc.....</b>	VIII	0.352	123.4	126.2	-2.0	-4.9	-2.4	2.1	2.3
<b>Wood, wood charcoal, cork, straw, basketware and wickerwork.....</b>	IX	0.527	105.8	107.8	-1.9	0.2	-1.6	-1.8	1.9
<b>Woodpulp, recovered paper, and paper products.....</b>	X	2.321	117.1	117.7	-7.5	-3.8	-2.7	0.3	0.5
Woodpulp and recovered paper.....	47	0.631	122.9	126.2	-18.4	-10.2	-7.3	1.5	2.7
Paper and paperboard; articles of paper pulp, paper or paperboard.....	48	1.238	117.2	116.6	-2.3	-0.8	-0.7	-0.1	-0.5
Printed material.....	49	0.452	119.4	119.4	1.2	0.0	0.0	0.1	0.0
<b>Textile and textile articles.....</b>	XI	2.017	132.3	130.4	-16.8	-0.7	-1.9	0.0	-1.4
Cotton, including yarns and woven fabrics thereof.....	52	0.672	166.3	158.3	-40.2	-2.5	-5.5	-1.5	-4.8
<b>Stone, plaster, cement, asbestos, ceramics, glass etc. (Dec. 2008=100).....</b>	XIII	0.742	116.6	116.9	1.2	0.0	-0.3	0.2	0.3
Glass and glassware.....	70	0.405	98.7	98.6	-0.4	-0.1	-0.5	-0.1	-0.1

See footnotes at end of table.

**Table 6. U.S. export price indexes and percent changes for selected categories of goods: February 2011 to February 2012 — Continued**  
 [2000=100, unless otherwise noted]

Description	Harmonized system	Relative importance Jan. 2012 <sup>1</sup>	Index		Percent change				
			Jan. 2012	Feb. 2012	Annual	Monthly			
					Feb. 2011 to Feb. 2012	Oct. 2011 to Nov. 2011	Nov. 2011 to Dec. 2011	Dec. 2011 to Jan. 2012	Jan. 2012 to Feb. 2012
<b>Pearls, stones, precious metals, imitation jewelry, and coins.....</b>	XIV	5.380	283.8	291.2	20.0	-1.6	1.5	-4.0	2.6
<b>Base metals and articles of base metals.....</b>	XV	5.620	175.8	178.9	-2.8	-1.1	-0.2	1.1	1.8
Iron and steel.....	72	1.752	219.5	227.9	-5.1	-5.1	0.0	3.2	3.8
Articles of iron or steel.....	73	1.380	173.6	170.7	3.4	0.8	-0.1	0.8	-1.7
Copper and articles thereof.....	74	0.653	248.0	261.5	-8.1	6.0	0.6	-0.4	5.4
Aluminum and articles thereof.....	76	0.836	126.5	128.8	-5.2	-0.9	-2.0	0.5	1.8
Tools, implements, cutlery, spoons and forks, of base metal; parts thereof.....	82	0.380	129.0	129.2	3.0	0.0	0.2	0.3	0.2
Miscellaneous articles of base metal.....	83	0.320	136.2	136.7	5.6	0.0	0.4	-0.1	0.4
<b>Machinery, electrical equipment, TV image and sound recorders, parts, etc.....</b>	XVI	27.646	96.4	96.5	0.6	-0.1	-0.1	0.2	0.1
Machinery and mechanical appliances; parts thereof.....	84	15.962	109.0	109.4	2.0	0.1	0.0	0.4	0.4
Electrical machinery and equipment and parts and accessories thereof.....	85	11.684	82.7	82.6	-1.2	-0.4	-0.1	-0.1	-0.1
<b>Vehicles, aircraft, vessels and associated transport equipment.....</b>	XVII	10.963	125.7	126.0	2.6	0.1	0.2	0.9	0.2
Motor vehicles and their parts.....	87	7.268	112.4	112.6	3.4	0.1	0.0	1.1	0.2
<b>Optical, photo, measuring, medical &amp; musical instruments; &amp; timepieces.....</b>	XVIII	5.765	104.6	105.2	-0.3	-0.2	0.0	-0.9	0.6
<b>Miscellaneous manufactured articles.....</b>	XX	1.332	108.2	108.3	0.6	-0.1	-0.1	-0.2	0.1
Furniture; stuffed furnishings; lamps and lighting fittings nesoi;.....	94	0.693	118.5	119.2	0.3	-0.3	-0.1	-0.5	0.6
Toys, games and sports equipment; parts and accessories thereof.....	95	0.517	90.0	89.6	-2.4	0.1	0.0	0.0	-0.4

1 Relative importance figures are based on 2010 trade values.

NOTES: Data may be revised in each of the three months after original publication.

Dash = Not available

**Table 7. U.S. import price indexes and percent changes by locality of origin: February 2011 to February 2012**  
 [2000=100, unless otherwise noted]

Description	Percent of U.S. imports <sup>1</sup>	Index		Percent change				
		Jan. 2012	Feb. 2012	Annual	Monthly			
				Feb. 2011 to Feb. 2012	Oct. 2011 to Nov. 2011	Nov. 2011 to Dec. 2011	Dec. 2011 to Jan. 2012	Jan. 2012 to Feb. 2012
<b>Industrialized Countries<sup>2</sup></b> .....	38.296	132.4	132.9	2.9	0.5	0.0	-0.6	0.4
Nonmanufactured articles.....	4.447	241.6	242.0	7.2	5.3	0.0	-1.9	0.2
Manufactured articles.....	33.487	123.5	123.9	2.2	-0.3	0.0	-0.4	0.3
<b>Other Countries<sup>3</sup></b> .....	61.704	142.2	142.8	6.5	0.9	0.0	0.1	0.4
Nonmanufactured articles.....	12.907	362.7	365.9	13.5	3.1	0.0	-0.4	0.9
Manufactured articles.....	48.593	112.2	112.5	3.9	0.0	0.0	0.4	0.3
<b>Canada</b> .....	14.414	154.4	155.5	2.4	1.0	0.3	-0.6	0.7
Nonmanufactured articles.....	4.027	231.7	230.2	5.0	5.9	0.1	-1.8	-0.6
Manufactured articles.....	10.122	137.6	139.4	1.1	-1.3	0.3	-0.1	1.3
<b>European Union<sup>4</sup></b> .....	15.813	135.0	134.8	2.7	-0.1	-0.3	-1.1	-0.1
Nonmanufactured articles.....	0.262	361.2	365.0	30.3	0.4	-2.0	-0.8	1.1
Manufactured articles.....	15.467	131.5	131.2	2.2	-0.1	-0.3	-1.1	-0.2
<b>France (Dec. 2003=100)</b> .....	1.736	120.9	120.7	-1.2	0.1	0.5	-0.2	-0.2
<b>Germany (Dec. 2003=100)</b> .....	4.265	114.4	114.5	0.5	-0.1	-0.1	-0.9	0.1
<b>United Kingdom (Dec. 2003=100)</b> .....	2.397	131.0	131.4	0.2	-0.2	-0.4	-1.1	0.3
<b>Latin America<sup>5</sup></b> .....	19.049	183.4	183.8	7.5	2.0	0.1	1.0	0.2
Nonmanufactured articles.....	5.633	405.8	405.3	18.5	5.9	0.5	1.5	-0.1
Manufactured articles.....	13.328	135.2	135.8	1.1	-0.5	-0.2	0.7	0.4
<b>Mexico (Dec. 2003=100)</b> .....	12.091	149.6	148.7	3.4	1.0	-0.1	1.1	-0.6
Nonmanufactured articles (Dec. 2008=100).....	2.017	219.6	213.4	17.8	5.6	-0.6	3.8	-2.8
Manufactured articles (Dec. 2008=100)....	10.028	96.2	96.3	-0.7	-0.4	0.1	0.3	0.1
<b>Pacific Rim (Dec. 2003=100)<sup>6</sup></b> .....	34.659	104.8	104.9	1.9	0.2	0.0	0.1	0.1
<b>China (Dec. 2003=100)</b> .....	19.583	105.4	105.5	3.3	0.3	0.0	0.3	0.1
<b>Japan</b> .....	6.349	102.3	102.5	1.6	0.0	0.2	0.2	0.2
<b>Asian NICs<sup>7</sup></b> .....	5.471	90.6	90.6	1.1	-0.1	-0.2	0.0	0.0
<b>ASEAN (Dec. 2003=100)<sup>8</sup></b> .....	5.652	105.2	105.7	2.2	0.3	-0.1	0.3	0.5
<b>Asia Near East (Dec. 2003=100)<sup>9</sup></b> .....	3.948	273.9	277.0	12.7	-0.3	-1.1	0.4	1.1

1 Percentage of trade figures are based on 2010 trade values.

2 Includes Western Europe, Canada, Japan, Australia, New Zealand and South Africa.

3 Includes Eastern Europe, Latin America, OPEC countries, and other countries in Asia, Africa and the Western Hemisphere.

4 Includes European Union countries.

5 Includes Mexico, Central America, South America and the Caribbean.

6 Includes China, Japan, Australia, Brunei, Indonesia, Macao, Malaysia, New Zealand, Papua New Guinea, Philippines and Asian Newly Industrialized Countries.

7 Asian Newly Industrialized Countries. Includes Hong Kong, Singapore, South Korea and Taiwan.

8 Association of Southeast Asian Nations. Includes Brunei, Cambodia, Indonesia, Laos, Malaysia, Myanmar, Philippines, Singapore, Thailand and Vietnam.

9 Includes Bahrain, Iran, Iraq, Israel, Jordan, Kuwait, Lebanon, Oman, Qatar, Saudi Arabia, Syria, United Arab Emirates and Yemen.

NOTES: Data may be revised in each of the three months after original publication.

Regions are not mutually exclusive.

Dash = Not available

**Table 8. U.S. international price indexes and percent changes for selected transportation services: February 2011 to February 2012**

[2000=100, unless otherwise noted]

Description	Relative importance Jan. 2012 <sup>1</sup>	Index		Percent change				
		Jan. 2012	Feb. 2012	Annual	Monthly			
				Feb. 2011 to Feb. 2012	Oct. 2011 to Nov. 2011	Nov. 2011 to Dec. 2011	Dec. 2011 to Jan. 2012	Jan. 2012 to Feb. 2012
<b>Air Freight</b>								
<b>Import Air Freight</b> .....	100.000	171.2	169.2	-1.3	-1.8	-0.5	-3.3	-1.2
Europe (Dec. 2003=100).....	24.925	164.4	161.7	12.1	-3.3	-0.3	-2.3	-1.6
Asia.....	70.485	150.3	148.6	-5.6	-1.3	-0.6	-3.8	-1.1
<b>Export Air Freight</b> .....	100.000	146.5	146.9	8.6	-0.9	0.1	1.6	0.3
Europe (Dec. 2006=100).....	35.959	131.5	132.2	8.5	-1.1	-0.6	1.5	0.5
<b>Inbound Air Freight</b> .....	100.000	157.3	155.7	0.5	-0.7	-0.9	-2.1	-1.0
Europe (Dec. 2003=100).....	25.173	147.1	145.6	8.3	-2.4	0.1	-1.6	-1.0
Asia.....	63.326	140.9	138.9	-2.5	-0.1	-1.6	-2.6	-1.4
<b>Outbound Air Freight</b> .....	100.000	144.1	144.6	9.2	-0.6	0.7	-0.3	0.3
Europe (Dec. 2003=100).....	30.953	162.3	163.4	8.2	-0.3	-0.2	-0.4	0.7
Asia.....	48.940	135.0	135.2	10.2	-1.0	1.1	-0.1	0.1
<b>Air Passenger Fares</b>								
<b>Import Air Passenger Fares</b> .....	100.000	179.9	180.5	11.8	-0.7	1.6	0.2	0.3
Europe.....	38.652	184.8	185.1	7.6	-3.5	-2.0	4.8	0.2
Asia.....	27.223	155.9	157.9	17.2	2.5	4.8	-4.1	1.3
Latin America/Caribbean.....	12.397	178.6	177.6	12.1	1.2	8.0	-4.4	-0.6
<b>Export Air Passenger Fares</b> .....	100.000	195.4	173.6	7.6	-2.3	3.8	2.3	-11.2
Europe.....	24.932	208.5	207.2	13.8	-7.3	-2.7	0.8	-0.6
Asia.....	30.369	190.0	156.2	6.0	1.6	2.7	6.2	-17.8
Latin America/Caribbean.....	22.440	212.4	188.1	6.6	1.7	7.3	3.7	-11.4

<sup>1</sup> Relative importance figures are based on 2010 trade values.

NOTES: Data may be revised in each of the three months after original publication.

Dash = Not available

## TECHNICAL NOTE

**Import and Export Merchandise and Services Price Indexes** -- All indexes use a modified Laspeyres formula and are not seasonally adjusted. Price indexes are reweighted annually, with a two-year lag in the weights. Published series use a base year of 2000=100 where possible. More detailed index series and additional information may be obtained at <http://www.bls.gov/mxp>, or by calling (202) 691-7101.

**Merchandise Goods Classification Systems** -- The merchandise price indexes are published using three classification systems. Items are classified by end use according to the Bureau of Economic Analysis Classification System, by industry according to the North American Industry Classification System (NAICS), and by product category according to the Harmonized System (HS). While classification by end use and product category are self-explanatory, some notes are in order for classifying items by industry. In the NAICS imports and exports tables, items are classified by output industry, not input industry. As an example, NAICS import index 326 (plastics and rubber products manufacturing) include outputs such as manufactured plastic rather than inputs such as petroleum. The NAICS classification structure also matches the classification system used by the PPI (Producer Price Index) to produce the NAICS primary products indexes.

**Import Price Indexes** -- Products have been classified by the Harmonized Tariff Schedule of the United States Annotated (TSUSA). Import prices are based on U.S. dollar prices paid by the U.S. importer. The prices are generally either "free on board" (f.o.b.) foreign port or "cost, insurance, and freight" (c.i.f.) U.S. port transaction prices, depending on the practices of the individual industry. The index for crude petroleum is calculated from data collected by the U.S. Department of Energy.

**Export Price Indexes** -- Products have been classified by the Harmonized Schedule B classification system of the U.S. Bureau of the Census. The prices used are generally either "free alongside ship" (f.a.s.) factory or "free on board" (f.o.b.) transaction prices, depending on the practices of the individual industry. Prices used in the grain index, excluding rice, are obtained from the U.S. Department of Agriculture.

**Services Price Indexes** -- Starting in September 2008 the Import Air Passenger Fares Indexes represent changes in the average revenue per passenger received by foreign carriers from U.S. residents and are calculated from data obtained from an airline consulting service. These data include tickets sold by travel agencies and travel websites. Tickets sold directly by the airlines are excluded, as are frequent flyer tickets generally. Starting in January 2008 the Export Air Passenger Fares Indexes represent changes in the average revenue per passenger received by U.S. carriers from foreign residents and are calculated from data collected directly from airlines. These data include frequent flyer tickets and those sold by consolidators. Taxes and fees are included in the Import Air Passenger Fares Index and excluded from the Export Air Passenger Fares Index. The Air Freight Indexes are calculated from data collected directly from airlines. These data exclude mail and passenger baggage. The scope of the service being priced is the movement of freight from airport to airport only, and does not include any ground transportation or port service. The Air Freight Indexes are presented using two definitions: Balance of Payments (which represent transactions between U.S. and foreign residents) and International (which represent transactions inbound to and outbound from the U.S.). Fact sheets specifying detailed information for each services industry are available at <http://www.bls.gov/mxp> under "MXP Publications."

**Import Indexes by Locality of Origin** -- Prices used in these indexes are a subset of the data collected for the Import Price Indexes. Beginning with January 2002, the indexes are defined by locality of origin using a nomenclature based upon the North American Industry Classification System (NAICS). Nonmanufactured goods are defined as NAICS 11 and 21 and manufactured goods are defined as NAICS 31-33.

**Revision Policy** -- To reflect the availability of late reports and corrections by respondents, monthly data may be revised in each of the three months after original publication. After three months, no further data revisions take place. So, for example, data released in the January release will be subject to revision in the releases for February, March, and April.

**Uses of the Data** -- The primary use of the indexes is to deflate trade statistics, notably the foreign trade sector of the National Income and Product Accounts constructed by the Department of Commerce. Other published indexes are useful for general market analysis. For trade in international services, Balance of Payments indexes are used for deflating National Income and Product Accounts, while International indexes are more appropriate for market analysis. Merchandise and services indexes also can be used to study U.S. competitiveness and to compute price elasticities, and the merchandise import indexes by country or region of origin are useful in terms of trade analysis.

**E-Mail Subscription** -- The U.S. Import and Export Price Indexes news release is available through an e-mail subscription service at (<http://www.bls.gov/bls/list.htm>).

**Additional Information** -- More detailed data are available on the Import/Export Price Indexes home page at (<http://www.bls.gov/mxp>). Flat Files and the FTP server are available for users requiring access to either a large volume of time series data or other related documentation. The FTP site can be accessed at <ftp://ftp.bls.gov>. For technical assistance in using the BLS Internet site, send e-mail to ([labstat.helpdesk@bls.gov](mailto:labstat.helpdesk@bls.gov)). For Import/Export Price Index data requests, send e-mail to ([mxpinfo@bls.gov](mailto:mxpinfo@bls.gov)).

Information from this release will be made available to sensory impaired individuals upon request. Voice phone: 202-691-5200; Federal Relay Service: 1-800-877-8339.