

Life's a lot easier when you have the right connections.

The Poison Help line can quickly connect you to medical professionals at your poison center,

*whenever* you need help.



Call phone appears first, circle fades in around it.

Pan back: Background copy moves in from right to left.

Medical professionals and caregiver symbols pulse glow upon contact: Background copy moves from right to left.

Background copy moves from right to left. Moon and stars lower from top on the word "whenever."

It's a great resource for *all* your questions.



Zoom in while panning down diagonally.



Dialog bubble pulse glows upon contact.



Zoom to dialog bubble as it morphs into poison topic symbols.



Zoom to dialog bubble as it morphs into poison topic symbols.

Medical experts can provide you with information about...

household products, other possible poisons...



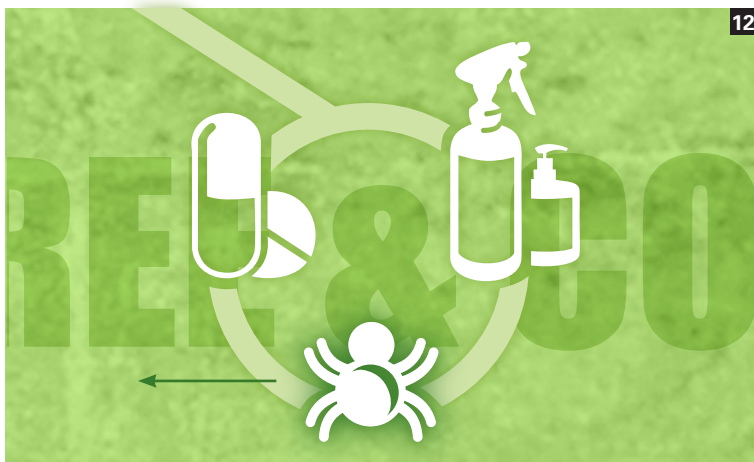
Pan back out.



Pan to lower right diagonal.



Household products pulse glow on the phrase "household products." Background copy moves from right to left.



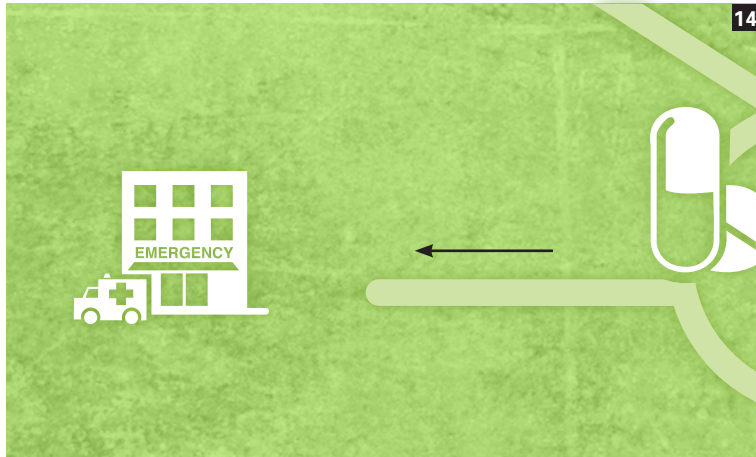
Spider pulse glows on the phrase "other possible poisons." Background copy continues to move from right to left.



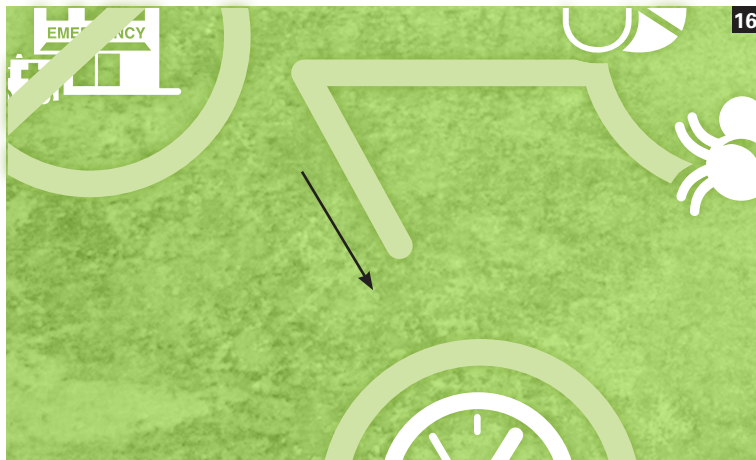
and medications, as well as treatment options.



And because most poisonings can be treated over the phone...



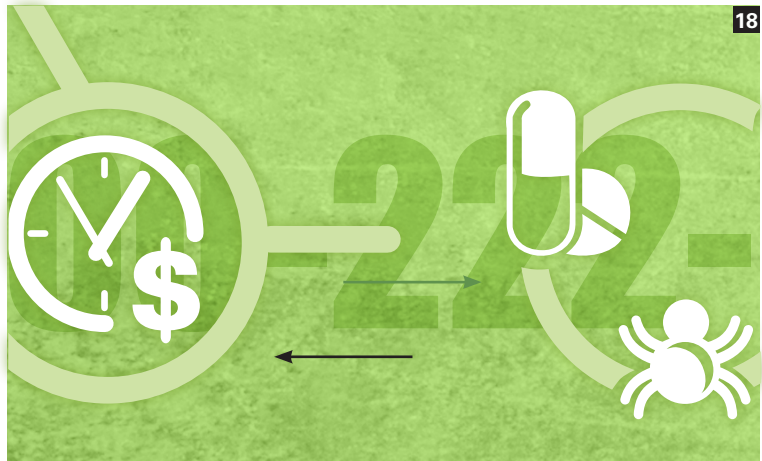
calls to the Poison Help line...



save you  
time and money.



Clock and dollar sign pulse glow upon contact. Back-ground copy moves from right to left.

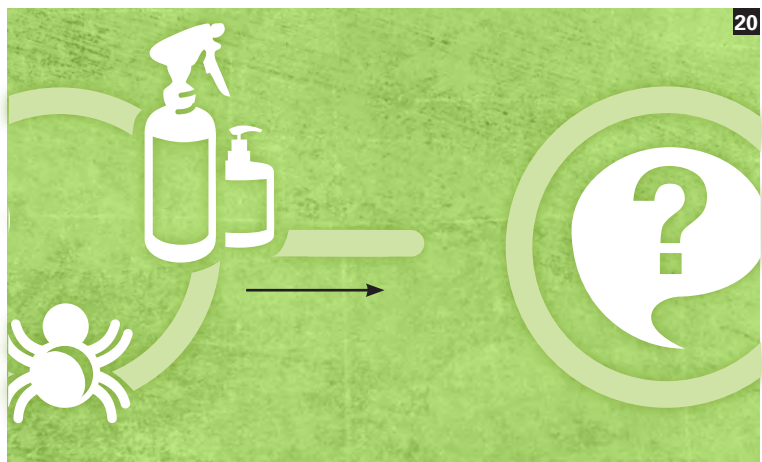


Pan to right. Background copy moves from right to left.



Pan to right. Poisons pulse glow upon contact. Back-ground copy moves from right to left.

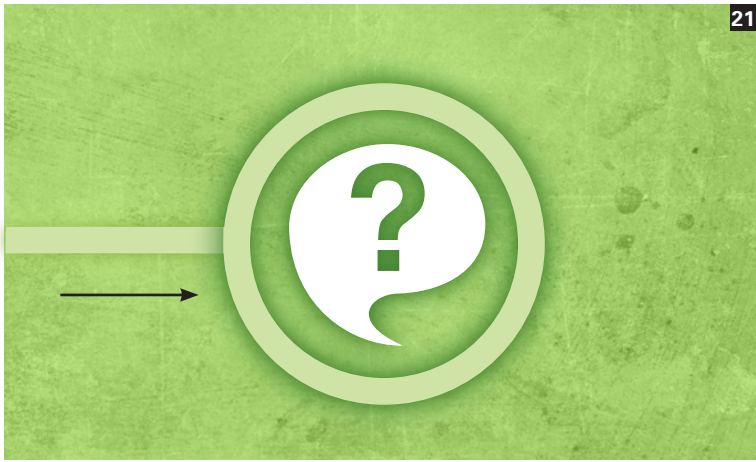
So, consider all  
the benefits that the  
Poison Help line can  
provide



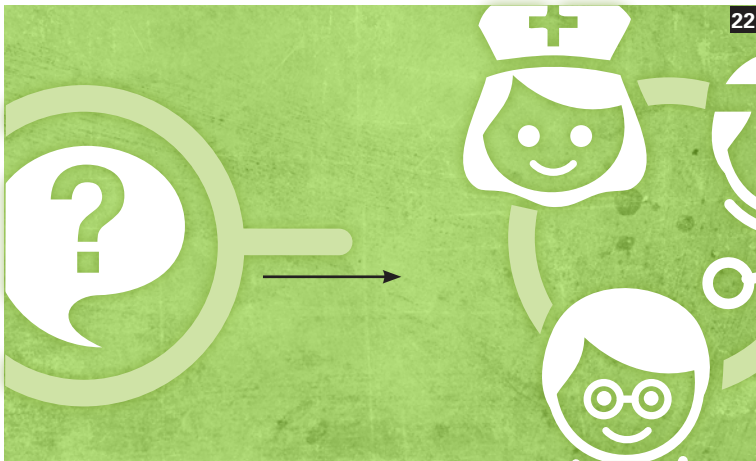
Pan to right.

...and plan ahead  
so it's there when you  
need it most.

Program the Poison Help  
line in to your phone today.



Pan to right: Dialog bubble pulse glows upon contact.



Pan to right:



Pan to right: Experts pulse glow upon contact.



Pan to right:



Make the call,  
make the connection.



