



Hop Stocks

ISSN: 1949-1484

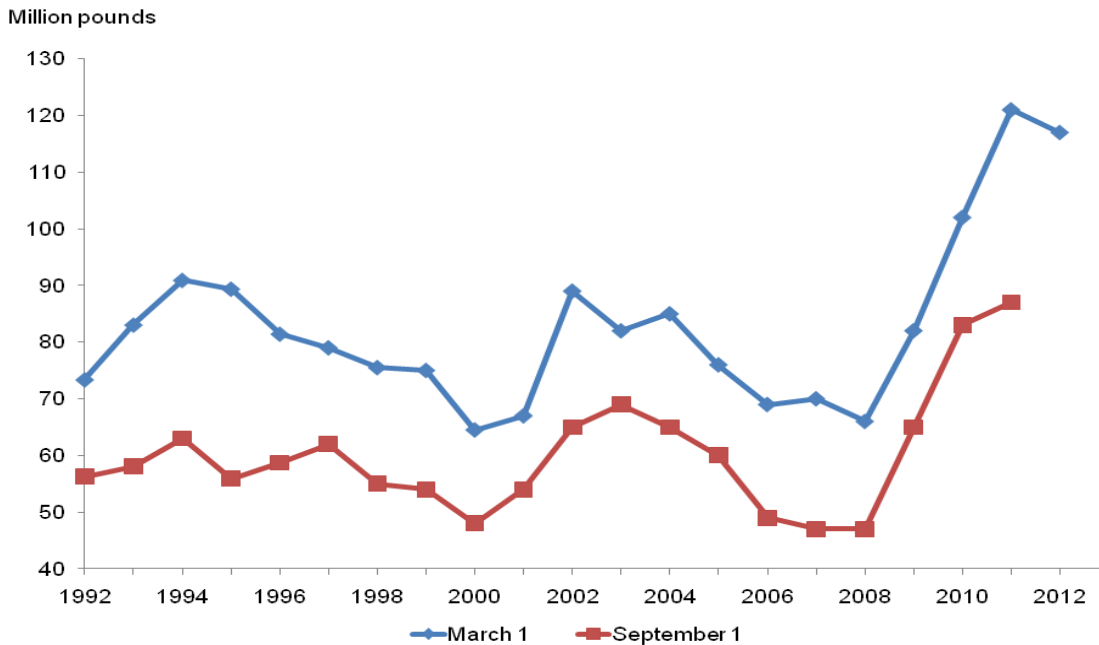
Released March 22, 2012, by the National Agricultural Statistics Service (NASS), Agricultural Statistics Board, United States Department of Agriculture (USDA).

March 1 Hop Stocks Down 3 Percent from Last Year

The inventory of hops held by growers, dealers, and brewers on March 1, 2012, totaled 117 million pounds, 3 percent less than the revised March 1, 2011 estimate. This is the second highest level for March 1 hop stocks. The previous record of 121 million pounds was set on March 1, 2011.

Stocks held by brewers, at 53.0 million pounds, were down 4 percent from a year ago. Stocks held by growers and dealers on March 1, 2012 totaled 64.0 million pounds, down 3 percent from a year ago.

Hop Stocks – United States



Hop Stocks Held by Growers, Dealers, and Brewers – United States: 2009-2012

[Includes equivalent pounds of dry hops held in extract or pellet form]

Stocks	September 1			March 1		
	2009	2010	2011	2010	2011	2012
	(1,000 pounds)	(1,000 pounds)	(1,000 pounds)	(1,000 pounds)	(1,000 pounds)	(1,000 pounds)
Stocks held by:						
Dealers/Growers	25,000	38,000	42,000	55,000	66,000	64,000
Brewers	40,000	45,000	45,000	47,000	55,000	53,000
Total stocks	65,000	83,000	87,000	102,000	121,000	117,000

Statistical Methodology

Survey procedures: Grower surveys are conducted in the three estimating States (Washington, Idaho, and Oregon) to collect stocks of hops held by growers. Additionally, contacts are made to collect stocks held by brewers and dealers. Telephone follow-up of mail survey non-respondents is used to ensure adequate coverage.

Estimating procedures: Information obtained from the hops stocks grower, dealer, and brewers surveys are used to establish estimates of hops stocks. These estimates are reviewed for errors, reasonableness, and consistency with historical estimates.

Revision policy: Hop stocks are subject to revision the following estimating period following initial publication and again in the following March Hop Stocks report. Revisions can be made when late reports are received, errors are detected in reporting and calculations, and production estimates are revised. Estimates will also be reviewed following the 5-Year Census of Agriculture. No revisions to these years will be made after that date.

Reliability: Survey indications are subject to sampling variability because all operations storing hops are not included in the sample. Survey results are also subject to non-sampling errors such as omission, duplication, imputation for missing data, and mistakes in reporting, recording, and processing the data. These errors cannot be measured directly, but are minimized through rigid quality controls in the data collection process and a careful review of all reported data for consistency and reasonableness.

Information Contacts

Listed below are the commodity statisticians in the Crops Branch of the National Agricultural Statistics Service to contact for additional information. E-mail inquiries may be sent to nass@nass.usda.gov

Lance Honig, Chief, Crops Branch	(202) 720-2127
Jorge Garcia-Pratts, Head, Fruits, Vegetables and Special Crops Section.....	(202) 720-2127
Debbie Flippin – Fresh and Processing Vegetables, Onions, Strawberries.....	(202) 720-2157
Fred Granja – Apples, Apricots, Cherries, Plums, Prunes, Tobacco.....	(202) 720-4288
Chris Hawthorn – Citrus, Coffee, Grapes, Sugar Crops, Tropical Fruits.....	(202) 720-5412
Dave Losh – Hops	(360) 709-2400
Dan Norris – Austrian Winter Peas, Dry Edible Peas, Lentils, Mints, Mushrooms, Peaches, Pears, Wrinkled Seed Peas, Dry Beans	(202) 720-3250
Daphne Schauber – Berries, Cranberries, Potatoes, Sweet Potatoes.....	(202) 720-4285
Erika White – Floriculture, Maple Syrup, Nursery, Tree Nuts	(202) 720-4215

Access to NASS Reports

For your convenience, you may access NASS reports and products the following ways:

- All reports are available electronically, at no cost, on the NASS web site: <http://www.nass.usda.gov>
- Both national and state specific reports are available via a free e-mail subscription. To set-up this free subscription, visit <http://www.nass.usda.gov> and in the “Follow NASS” box under “Receive reports by Email,” click on “National” or “State” to select the reports you would like to receive.
- Printed reports may be purchased from the National Technical Information Service (NTIS) by calling toll-free (800) 999-6779, or (703) 605-6220 if calling from outside the United States or Canada. Accepted methods of payment are Visa, MasterCard, check, or money order.

For more information on NASS surveys and reports, call the NASS Agricultural Statistics Hotline at (800) 727-9540, 7:30 a.m. to 4:00 p.m. ET, or e-mail: nass@nass.usda.gov.

The United States Department of Agriculture (USDA) prohibits discrimination in all its programs and activities on the basis of race, color, national origin, age, disability, and where applicable, sex, marital status, familial status, parental status, religion, sexual orientation, political beliefs, genetic information, reprisal, or because all or a part of an individual's income is derived from any public assistance program. (Not all prohibited bases apply to all programs.) Persons with disabilities who require alternative means for communication of program information (Braille, large print, audiotape, etc.) should contact USDA's TARGET Center at (202) 720-2600 (voice and TDD).

To file a complaint of discrimination, write to USDA, Assistant Secretary for Civil Rights, Office of the Assistant Secretary for Civil Rights, 1400 Independence Avenue, S.W., Stop 9410, Washington, DC 20250-9410, or call toll-free at (866) 632-9992 (English) or (800) 877-8339 (TDD) or (866) 377-8642 (English Federal-relay) or (800) 845-6136 (Spanish Federal-relay). USDA is an equal opportunity provider and employer.