

Released June 29, 2012, by the National Agricultural Statistics Service (NASS), Agricultural Statistics Board, United States Department of Agriculture (USDA).

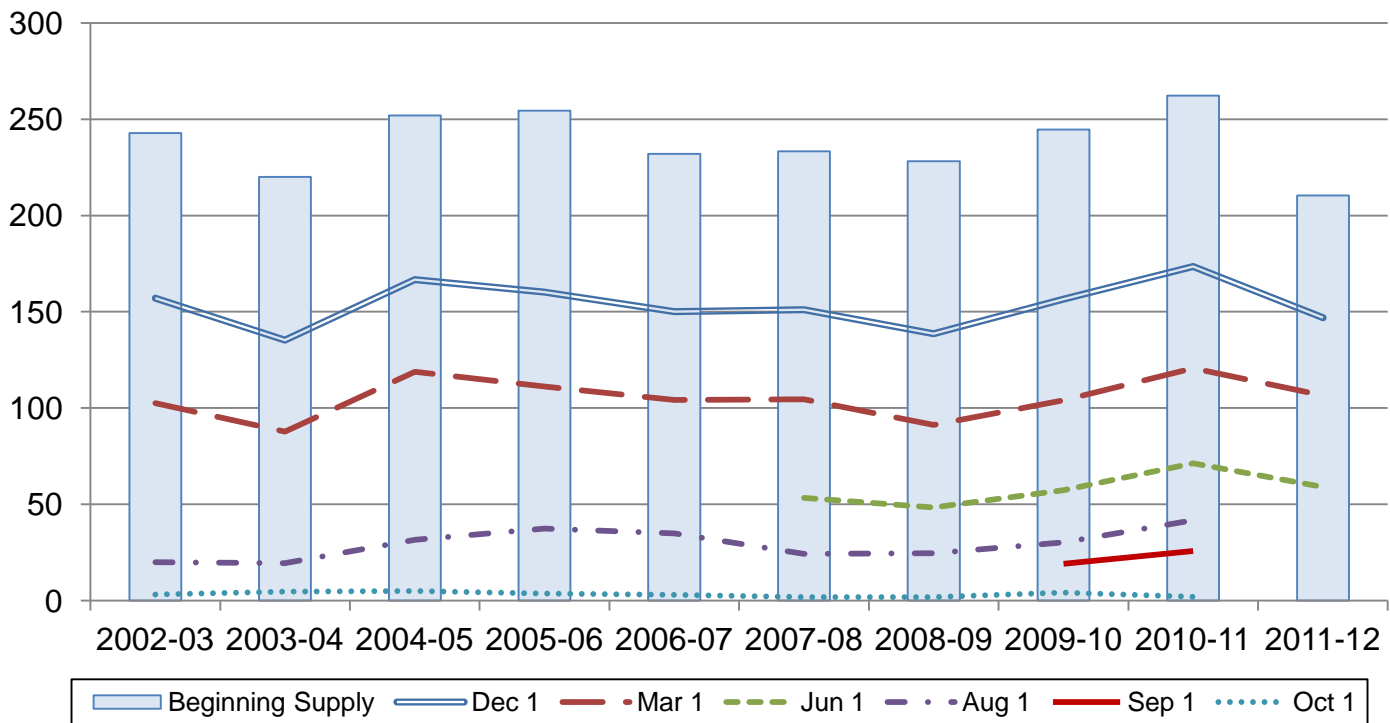
## Rough Rice Stocks Down 17 Percent from June 2011

**Rough rice stocks** in all positions on June 1, 2012 totaled 59.1 million hundredweight (cwt), down 17 percent from the total on June 1, 2011. Stocks held on farms totaled 6.64 million cwt and off-farm stocks totaled 52.5 million cwt. Long grain varieties accounted for 64 percent of the total rough rice, medium grain accounted for 34 percent, and short grain varieties accounted for 2 percent.

**Milled rice stocks** in all positions totaled 4.46 million cwt, down 25 percent from a year ago. Milled rice stocks were comprised of 3.01 million cwt of whole kernel rice and 1.46 million cwt of second heads, screenings, and brewers rice.

## Rough Rice Stocks – United States

Million cwt



## Rice Stocks by Position and Month in Domestic Units – United States: 2011 and 2012

[Blank data cells indicate estimation period has not yet begun]

Date	2011			2012		
	On farms	Off farms <sup>1</sup>	Total all positions	On farms	Off farms <sup>1</sup>	Total all positions
	(1,000 cwt)	(1,000 cwt)	(1,000 cwt)	(1,000 cwt)	(1,000 cwt)	(1,000 cwt)
<b>Rough rice</b>						
March 1 .....	33,895	86,720	120,615	23,825	82,666	106,491
June 1 .....	13,227	58,146	71,373	6,640	52,466	59,106
August 1 .....	3,772	37,917	41,689			
September 1 .....	2,242	23,613	25,855			
October 1 <sup>2</sup> .....	15	2,048	2,063			
December 1 .....	41,180	105,689	146,869			
<b>Milled rice</b>						
March 1 .....	(X)	6,275	6,275	(X)	4,494	4,494
June 1 .....	(X)	5,968	5,968	(X)	4,462	4,462
August 1 .....	(X)	4,667	4,667			
September 1 .....	(X)	3,998	3,998			
October 1 <sup>2</sup> .....	(X)	1,337	1,337			
December 1 .....	(X)	6,243	6,243			

(X) Not applicable.

<sup>1</sup> Includes stocks at mills, elevators, warehouses, ports, and in transit.

<sup>2</sup> California only.

## Rice Stocks by Position and Month in Metric Units – United States: 2011 and 2012

[Data may not add to totals due to rounding. Blank data cells indicate estimation period has not yet begun]

Date	2011			2012		
	On farms	Off farms <sup>1</sup>	Total all positions	On farms	Off farms <sup>1</sup>	Total all positions
	(metric tons)	(metric tons)	(metric tons)	(metric tons)	(metric tons)	(metric tons)
<b>Rough rice</b>						
March 1 .....	1,537,450	3,933,550	5,471,000	1,080,680	3,749,670	4,830,350
June 1 .....	599,970	2,637,460	3,237,430	301,190	2,379,820	2,681,000
August 1 .....	171,100	1,719,890	1,890,980			
September 1 .....	101,700	1,071,070	1,172,760			
October 1 <sup>2</sup> .....	680	92,900	93,580			
December 1 .....	1,867,890	4,793,970	6,661,870			
<b>Milled rice</b>						
March 1 .....	(X)	284,630	284,630	(X)	203,840	203,840
June 1 .....	(X)	270,700	270,700	(X)	202,390	202,390
August 1 .....	(X)	211,690	211,690			
September 1 .....	(X)	181,350	181,350			
October 1 <sup>2</sup> .....	(X)	60,650	60,650			
December 1 .....	(X)	283,180	283,180			

(X) Not applicable.

<sup>1</sup> Includes stocks at mills, elevators, warehouses, ports, and in transit.

<sup>2</sup> California only.

## Rice Stocks by Position – States and United States: June 1, 2011 and 2012

State	2011			2012		
	On farms	Off farms <sup>1</sup>	Total all positions	On farms	Off farms <sup>1</sup>	Total all positions
	(1,000 cwt)	(1,000 cwt)	(1,000 cwt)	(1,000 cwt)	(1,000 cwt)	(1,000 cwt)
<b>Rough rice</b>						
Arkansas .....	7,300	33,649	40,949	3,500	31,480	34,980
California .....	597	12,327	12,924	690	12,413	13,103
Louisiana .....	1,290	4,799	6,089	1,350	2,313	3,663
Mississippi .....	1,900	1,616	3,516	300	1,380	1,680
Missouri .....	(D)	(D)	4,194	(D)	(D)	1,769
Texas .....	(D)	(D)	3,701	(D)	(D)	3,911
Unallocated <sup>2</sup> .....	2,140	5,755	-	800	4,880	-
United States .....	13,227	58,146	71,373	6,640	52,466	59,106
<b>Milled rice</b>						
Arkansas .....	(X)	(D)	(D)	(X)	1,791	1,791
California .....	(X)	1,769	1,769	(X)	1,753	1,753
Louisiana .....	(X)	998	998	(X)	128	128
Mississippi .....	(X)	(D)	(D)	(X)	(D)	(D)
Missouri .....	(X)	(D)	(D)	(X)	(D)	(D)
Texas .....	(X)	797	797	(X)	461	461
Unallocated <sup>2</sup> .....	(X)	2,404	2,404	(X)	329	329
United States .....	(X)	5,968	5,968	(X)	4,462	4,462

- Represents zero.

(D) Withheld to avoid disclosing data for individual operations.

(X) Not applicable.

<sup>1</sup> Includes stocks at mills, elevators, warehouses, ports, and in transit.

<sup>2</sup> Unallocated includes State data withheld to avoid disclosure of individual operations.

**Rough Rice Stocks by Length of Grain in All Positions – States and United States:  
June 1, 2011 and 2012**

State	Long		Medium		Short		Total	
	2011	2012	2011	2012	2011	2012	2011	2012
	(1,000 cwt)	(1,000 cwt)	(1,000 cwt)	(1,000 cwt)	(1,000 cwt)	(1,000 cwt)	(1,000 cwt)	(1,000 cwt)
California .....	(D)	(D)	11,348	11,538	(D)	(D)	12,924	13,103
Other States <sup>1</sup> .....	(D)	(D)	3,979	8,734	(D)	(D)	58,449	46,003
United States .....	54,636	37,552	15,327	20,272	1,410	1,282	71,373	59,106

(D) Withheld to avoid disclosing data for individual operations.

<sup>1</sup> Other States include Arkansas, Louisiana, Mississippi, Missouri, and Texas.

**Milled Rice Stocks by Length of Grain in All Positions – States and United States:  
June 1, 2011 and 2012**

State	Whole kernels (head rice)							
	Long		Medium		Short		Total	
	2011	2012	2011	2012	2011	2012	2011	2012
	(1,000 cwt)	(1,000 cwt)	(1,000 cwt)	(1,000 cwt)	(1,000 cwt)	(1,000 cwt)	(1,000 cwt)	(1,000 cwt)
California .....	(D)	(D)	758	937	(D)	(D)	816	1,002
Other States <sup>1</sup> .....	(D)	(D)	223	104	(D)	(D)	3,509	2,005
United States .....	3,291	1,906	981	1,041	53	60	4,325	3,007

State	Broken kernels							
	Second heads		Screenings <sup>2</sup>		Brewers		Total	
	2011	2012	2011	2012	2011	2012	2011	2012
	(1,000 cwt)	(1,000 cwt)	(1,000 cwt)	(1,000 cwt)	(1,000 cwt)	(1,000 cwt)	(1,000 cwt)	(1,000 cwt)
California .....	(D)	373	-	-	(D)	378	953	751
Other States <sup>1</sup> .....	(D)	405	153	145	(D)	154	690	704
United States .....	817	778	153	145	673	532	1,643	1,455

- Represents zero.

(D) Withheld to avoid disclosing data for individual operations.

<sup>1</sup> Other States include Arkansas, Louisiana, Mississippi, Missouri, and Texas.

<sup>2</sup> Screenings included with second heads in California.

## Rice Stocks by Position – States and United States: March 1, 2011 and 2012

State	2011			2012		
	On farms	Off farms <sup>1</sup>	Total all positions	On farms	Off farms <sup>1</sup>	Total all positions
	(1,000 Cwt)	(1,000 Cwt)	(1,000 Cwt)	(1,000 Cwt)	(1,000 Cwt)	(1,000 Cwt)
<b>Rough rice</b>						
Arkansas .....	18,400	43,671	62,071	13,900	40,435	54,335
California .....	1,700	25,528	27,228	1,815	24,756	26,571
Louisiana .....	4,900	7,039	11,939	4,100	6,959	11,059
Mississippi .....	(D)	(D)	6,393	(D)	(D)	4,270
Missouri .....	(D)	(D)	7,189	(D)	(D)	4,121
Texas .....	860	4,935	5,795	880	5,255	6,135
Unallocated <sup>2</sup> .....	8,035	5,547	-	3,130	5,261	-
United States .....	33,895	86,720	120,615	23,825	82,666	106,491
<b>Milled rice</b>						
Arkansas .....	(X)	(D)	(D)	(X)	1,358	1,358
California .....	(X)	2,368	2,368	(X)	1,891	1,891
Louisiana .....	(X)	360	360	(X)	(D)	(D)
Mississippi .....	(X)	(D)	(D)	(X)	(D)	(D)
Missouri .....	(X)	(D)	(D)	(X)	(D)	(D)
Texas .....	(X)	927	927	(X)	472	472
Unallocated <sup>2</sup> .....	(X)	2,620	2,620	(X)	773	773
United States .....	(X)	6,275	6,275	(X)	4,494	4,494

- Represents zero.

(D) Withheld to avoid disclosing data for individual operations.

(X) Not applicable.

<sup>1</sup> Includes stocks at mills, elevators, warehouses, ports, and in transit.

<sup>2</sup> Unallocated includes State data withheld to avoid disclosure of individual operations.

**Rough Rice Stocks By Length of Grain in All Positions – States and United States:  
March 1, 2011 and 2012**

State	Long		Medium		Short		Total	
	2011	2012	2011	2012	2011	2012	2011	2012
	(1,000 cwt)	(1,000 cwt)	(1,000 cwt)	(1,000 cwt)	(1,000 cwt)	(1,000 cwt)	(1,000 cwt)	(1,000 cwt)
California .....	(D)	366	24,783	24,163	(D)	2,042	27,228	26,571
Other States <sup>1</sup> .....	(D)	68,103	6,765	11,815	(D)	2	93,387	79,920
United States .....	86,864	68,469	31,548	35,978	2,203	2,044	120,615	106,491

(D) Withheld to avoid disclosing data for individual operations.

<sup>1</sup> Other States include Arkansas, Louisiana, Mississippi, Missouri, and Texas.

**Milled Rice Stocks by Length of Grain in All Positions – States and United States:  
March 1, 2011 and 2012**

State	Whole kernels (head rice)							
	Long		Medium		Short		Total	
	2011	2012	2011	2012	2011	2012	2011	2012
	(1,000 cwt)	(1,000 cwt)	(1,000 cwt)	(1,000 cwt)	(1,000 cwt)	(1,000 cwt)	(1,000 cwt)	(1,000 cwt)
California .....	(D)	(D)	1,595	757	(D)	(D)	1,658	807
Other States <sup>1</sup> .....	(D)	(D)	208	178	(D)	(D)	3,245	2,033
United States .....	3,038	1,856	1,803	935	62	49	4,903	2,840

State	Broken kernels							
	Second heads		Screenings <sup>2</sup>		Brewers		Total	
	2011	2012	2011	2012	2011	2012	2011	2012
	(1,000 cwt)	(1,000 cwt)	(1,000 cwt)	(1,000 cwt)	(1,000 cwt)	(1,000 cwt)	(1,000 cwt)	(1,000 cwt)
California .....	358	674	-	-	352	410	710	1,084
Other States <sup>1</sup> .....	276	347	91	82	295	141	662	570
United States .....	634	1,021	91	82	647	551	1,372	1,654

- Represents zero.

(D) Withheld to avoid disclosing data for individual operations.

<sup>1</sup> Other States include Arkansas, Louisiana, Mississippi, Missouri, and Texas.

<sup>2</sup> Screenings included with second heads in California.

## Statistical Methodology

**Survey Procedures:** The rice stocks estimates in this report are based on surveys conducted during the first two weeks of June. Separate surveys were conducted to obtain the on-farm and off-farm estimates. The on-farm stocks survey is a probability survey based on a sampling procedure that ensures all operations storing rice in the United States have a chance to be selected. These producers were asked to provide the total quantities of grain stored on their operations as of June 1, 2012 regardless of ownership. Off-farm stocks are a census of all known rice storage facilities. An effort is made to obtain reports from all off-farm facilities. Estimates are made for missing facilities to assure complete coverage.

**Estimating Procedures:** On-farm and off-farm survey data are reviewed at the State and national levels for reasonableness, consistency with historical estimates, and current crop size. After estimates are made for on-farm and off-farm rice stocks, the total of these two are combined and evaluated using the balance sheet approach. This method utilizes other sources of data to check the reasonableness of the stocks estimates. Estimates of production, exports, and millings are reviewed to make sure beginning stocks, production, utilization, and ending stocks are within reasonable balance and present the best possible estimate of stocks.

**Revision Policy:** On-farm and off-farm stocks are subject to revision in the quarter following initial publication and again in the following December 1 *Rice Stocks* report published in January each year. Revisions can be made when late reports are received, errors are detected in reporting and calculating, and when production estimates are revised. Estimates will also be reviewed after data from the 5-year Census of Agriculture are available. No revisions to these years will be made after that date.

**Reliability:** Reliability of the on-farm and off-farm stocks must be treated separately because the survey designs for the two surveys are drastically different. The on-farm stocks estimates are subject to sampling variability because all operations holding on-farm stocks are not included in the sample.

Survey indications are also subject to non-sampling errors such as omission, duplication, imputation for missing data, and mistakes in reporting, recording, and processing the data. Off-farm, as well as on-farm stocks, are subject to these types of errors. These errors cannot be measured directly, but they are minimized through rigid quality controls in the data collection process and a careful review of all reported data for consistency and reasonableness.

## Information Contacts

Listed below are the commodity statisticians in the Crops Branch of the National Agricultural Statistics Service to contact for additional information. E-mail inquiries may be sent to [nass@nass.usda.gov](mailto:nass@nass.usda.gov)

Lance Honig, Chief, Crops Branch.....	(202) 720-2127
Jacqueline Moore, Head, Field Crops Section.....	(202) 720-2127
Suzanne Avilla – Peanuts, Rice .....	(202) 720-7688
Bryan Durham – Oats, Rye, Wheat.....	(202) 720-8068
Steve Maliszewski – Cotton, Cotton Ginnings, Sorghum.....	(202) 720-5944
Anthony Prillaman – Corn, Flaxseed, Proso Millet .....	(202) 720-9526
Julie Schmidt – Crop Weather, Barley, Hay .....	(202) 720-7621
Travis Thorson – Soybeans, Sunflower, Other Oilseeds .....	(202) 720-7369

## Access to NASS Reports

For your convenience, you may access NASS reports and products the following ways:

- All reports are available electronically, at no cost, on the NASS web site: <http://www.nass.usda.gov>
- Both national and state specific reports are available via a free e-mail subscription. To set-up this free subscription, visit <http://www.nass.usda.gov> and in the “Follow NASS” box under “Receive reports by Email,” click on “National” or “State” to select the reports you would like to receive.
- Printed reports may be purchased from the National Technical Information Service (NTIS) by calling toll-free (800) 999-6779, or (703) 605-6220 if calling from outside the United States or Canada. Accepted methods of payment are Visa, MasterCard, check, or money order.

For more information on NASS surveys and reports, call the NASS Agricultural Statistics Hotline at (800) 727-9540, 7:30 a.m. to 4:00 p.m. ET, or e-mail: [nass@nass.usda.gov](mailto:nass@nass.usda.gov).

The United States Department of Agriculture (USDA) prohibits discrimination in all its programs and activities on the basis of race, color, national origin, age, disability, and where applicable, sex, marital status, familial status, parental status, religion, sexual orientation, political beliefs, genetic information, reprisal, or because all or a part of an individual's income is derived from any public assistance program. (Not all prohibited bases apply to all programs.) Persons with disabilities who require alternative means for communication of program information (Braille, large print, audiotape, etc.) should contact USDA's TARGET Center at (202) 720-2600 (voice and TDD).

To file a complaint of discrimination, write to USDA, Assistant Secretary for Civil Rights, Office of the Assistant Secretary for Civil Rights, 1400 Independence Avenue, S.W., Stop 9410, Washington, DC 20250-9410, or call toll-free at (866) 632-9992 (English) or (800) 877-8339 (TDD) or (866) 377-8642 (English Federal-relay) or (800) 845-6136 (Spanish Federal-relay). USDA is an equal opportunity provider and employer.