

## BIOSENSE REDESIGN COLLABORATION SITE

<https://sites.google.com/site/biosenseredesign/resources>

The recruitment process would be covered under 'onboarding'.

[Community Forum](#)  
[Onboarding](#)  
[About this Project](#)  
**Resources**  
[Library](#)  
[Project Team](#)  
[Collaborator Login](#)

## News

\* 8/3/12: The Syndromic Surveillance Systems Coverage Map, Requirements and Environmental Scan information have been archived! These items can be accessed on the Resources page, under BioSense 1.0 Materials.

\* To view a video about BioSense 2.0, click [HERE](#).

\* If you wish to be notified of future updates and postings please provide your [contact information](#).

### Archived News Items

## Question of the Week

If a copy of my state's data is downloaded to CDC for analysis, it could be subject to FOIA requests. This will be problematic for policymakers in my state. Will CDC be able to do analyses with data in the cloud without downloading it?

With the BioSense representative governance model, users can define how and what type of access CDC will have to analyze and receive data. All data/information that external organizations provide to CDC or other

# Resources

## BioSense Fact Sheets

- [Get Involved!](#)
- [Public Health Practice and Surveillance](#)
- [Tracking, Safeguarding, and Improving National Health](#)
- [What to Expect: BioSense 2.0 Rollout and Beyond](#)
- [Why Should You Join BioSense 2.0?](#)

## BioSense Frequently Asked Questions

Got questions? We've got answers! Please take a moment to view our

## CSTE Syndromic Surveillance Regulations Library

CSTE has launched a library with links to state and local laws mandating BioSense page. The library will host copies of state and local legislative reporting.

## BioSense Webinars

### BioSense 2.0 – Data Transport Mechanisms

ASTHO and the BioSense Redesign team hosted a webinar on May 17 supported by BioSense 2.0. An overview of several data transport mechanisms providers to the application, including NwHIN Connect, Direct, PHIN, link above to view a recording of this webinar.

### Public Health Surveillance in the Internet Cloud: The BioSense 2.0 Experience

This ISDS sponsored webinar, held on February 9, 2012, introduces details about the government cloud services of the BioSense 2.0 environment. Local Health Departments can elect to use (Platform as a Service or PaaS) a service of SaaS) capabilities. The BioSense 2.0 environment receives

- Community Forum
- Onboarding
- About this Project
- Resources
- Library
- Project Team
- Collaborator Login

**News**

\* 8/3/12: The Syndromic Surveillance Systems Coverage Map, Requirements and Environmental Scan information have been archived! These items can be accessed on the Resources page, under BioSense 1.0 Materials.

\* To view a video about BioSense 2.0, click [HERE](#).

\* If you wish to be notified of future updates and postings please provide your [contact information](#).

**Archived News Items**

**Question of the Week**

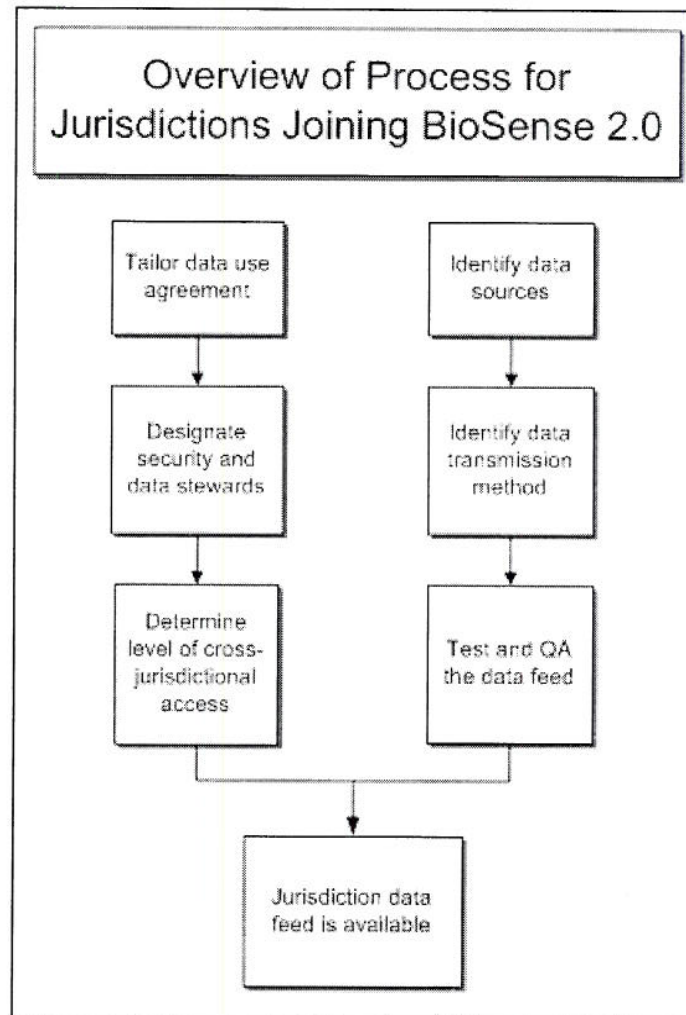
If a copy of my state's data is downloaded to CDC for analysis, it could be subject to FOIA requests. This will be problematic for policymakers in my state. Will CDC be able to do analyses with data in the cloud without downloading it?

With the BioSense representative governance model, users can define how and what type of access CDC will have to analyze and receive data. All data/information that external organizations provide to CDC or other

## Onboarding

Jurisdictions may join BioSense 2.0 at no cost. Staff time will be needed as signing data use agreements (DUAs) and working with entities that provide ambulatory care providers, etc.).

The diagram below summarizes the general steps jurisdictions follow in detail below.



Note that the jurisdiction has received the BioSense 2.0 feed into the system at the level of care.