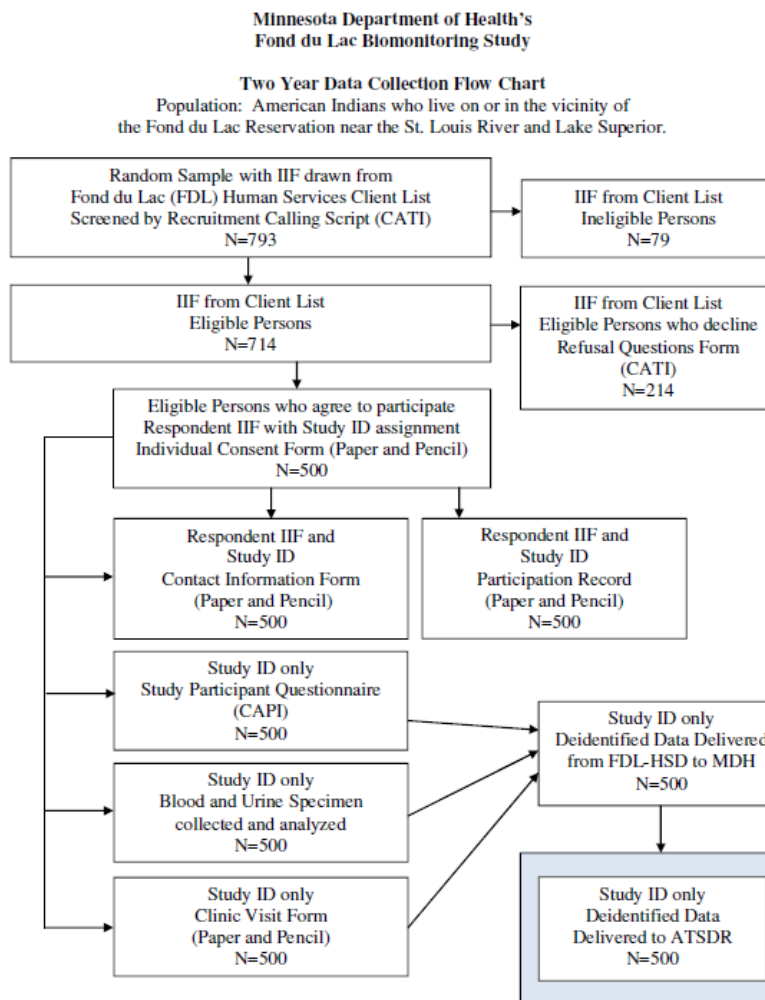


Attachment 5. Minnesota Department of Health Data Collection System

Index of Minnesota Department of Health Forms

- 5a. MN Recruitment Calling Script
- 5b. MN Refusal Questions Form
- 5c. MN Individual Consent Brochure and Form
- 5d. MN Contact Information Form
- 5e. MN Study Participant Questionnaire
- 5f. MN Clinic Visit Form
- 5g. MN Participation Record

Minnesota Department of Health Flow Chart



Data will be merged by Study ID for analysis. Identifiable Information will be used for individual reporting only. The information in identifiable form (IIF) will be stored and managed in each state's already established record system. All IIF will be maintained and processed in established record systems by Fond du Lac Human Services Division (FDL-HSD) under contract with MDH and their authorized staff and contractors. The data will be deidentified prior to delivery to MDH. MDH will deliver to ATSDR, through a secure and encrypted file transfer protocol.