

Attachment 6. New York State Department of Health Data Collection System

Index of New York State Department of Health Forms, Licensed Anglers

- 6a. NY Eligibility Screening Cover Letter and Fact Sheet, Licensed Anglers
 - 6b. NY Mail-in Eligibility Screening Survey, Licensed Anglers
 - 6c. NY Online Eligibility Screening Survey, Licensed Anglers
 - 6d. NY Telephone Script for Non-responders to Screening, Licensed Anglers
 - 6e. NY Telephone Script for Eligible Responders to Screening, Licensed Anglers
 - 6f. NY Informed Consent, Licensed Anglers
 - 6g. NY Interview Questionnaire, Licensed Anglers
- (translations to Spanish language will be completed after OMB approval)

New

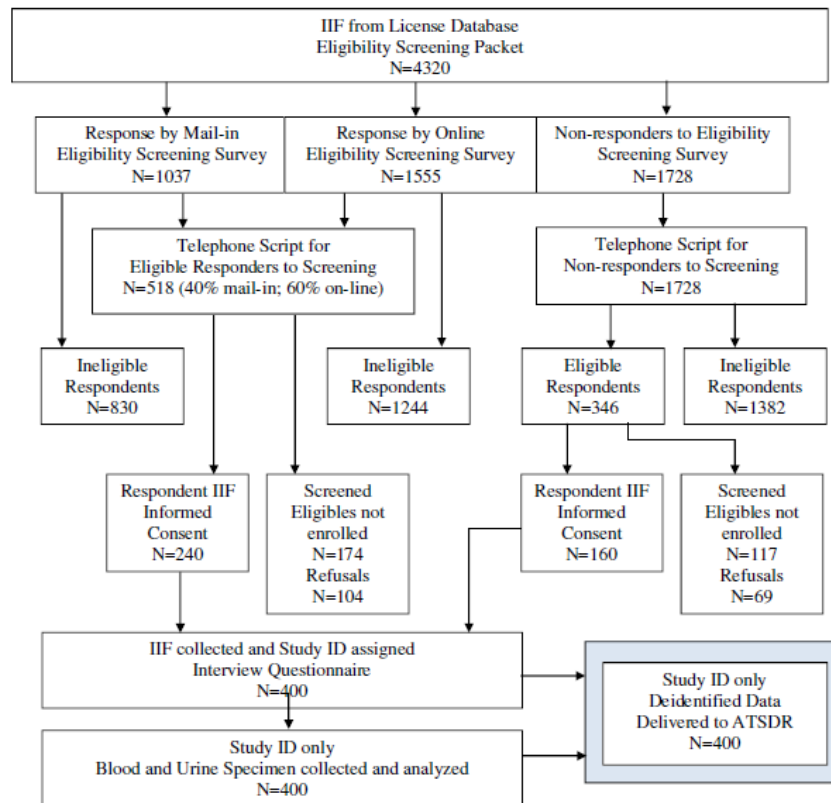
York

State Department of Health Flow Chart, Licensed Anglers

New York State Department of Health's Blomonitoring of Licensed Anglers in New York State's Areas of Concern

Data Collection Flow Chart

Population 1: Licensed anglers who reside in the western New York Counties of Erie, Niagara, and Monroe.



Data will be merged by Study ID for analysis. Identifiable Information will be used for individual reporting only. The information in identifiable form (IIF) will be stored and managed in each state's already established record system. All IIF will be maintained and processed in established record systems by each state health department and their authorized staff and contractors. The data will be deidentified by the state health departments prior to delivery to ATSDR, through a secure and encrypted file transfer protocol.

Index of New York State Department of Health Forms, Immigrants from Burma and Descendants

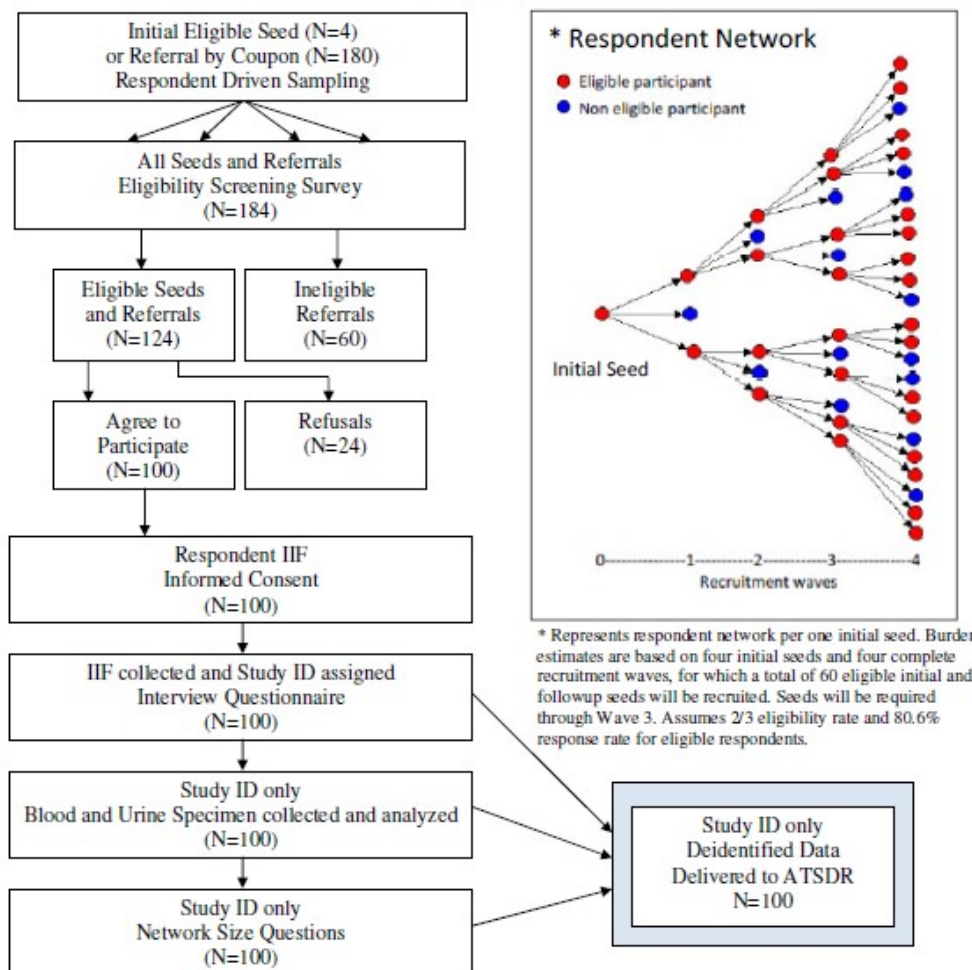
- 6h. NY Eligibility Screening Survey, Burmese
- 6i. NY Informed Consent, Burmese
- 6j. NY Interview Questionnaire, Burmese
- 6k. NY Network Size Questions for Respondent Driven Sampling, Burmese

New York State Department of Health Flow Chart, Immigrants from Burma and Descendants

New York State Department of Health's Biomonitoring of People from Burma or Their Descendants Living Near New York State's Areas of Concern

Data Collection Flow Chart

Population 2: Refugees and immigrants from Burma and their descendants who live in the City of Buffalo and who eat fish caught in the targeted New York AOCs.



Data will be merged by Study ID for analysis. Identifiable Information will be used for individual reporting only. The information in identifiable form (IIF) will be stored and managed in each state's already established record system. All IIF will be maintained and processed in established record systems by each state health department and their authorized staff and contractors. The data will be deidentified by the state health departments prior to delivery to ATSDR, through a secure and encrypted file transfer protocol.