



NCS ASA24 Protocol

1.1 Use of the Food Portion Visual

Participants will be provided a Food Portion Size Guide to assist with estimating amounts when completing the ASA24. A review of the Food Portion Size Guide by the study site research assistant will ensure the purpose and appropriate use for future ASA24 recalls.

1.2 Getting started

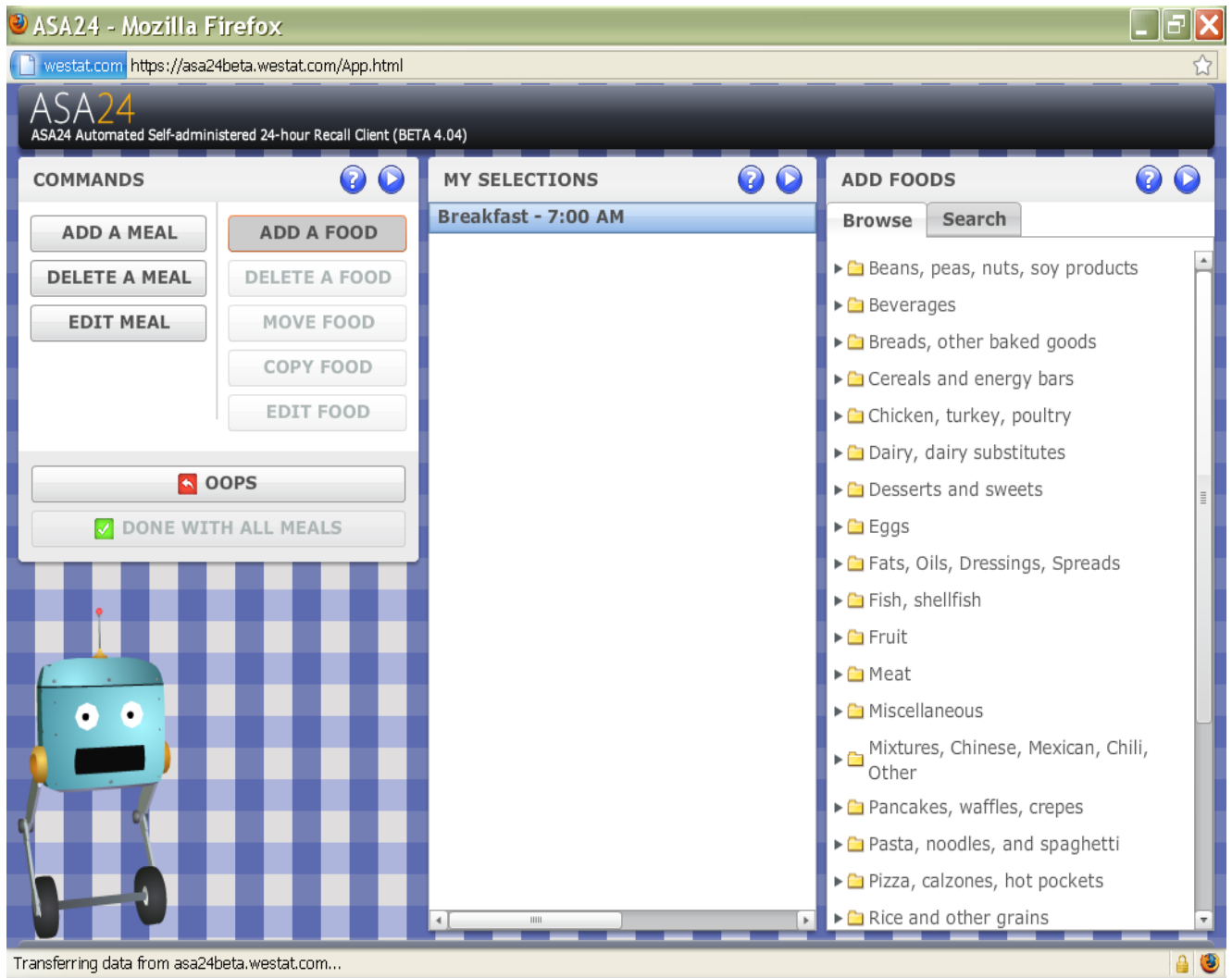
PASS 1:

To begin the ASA24 and after logging in, the participant will complete the name of meal, time and location. The participant will not be able to continue until all fields are complete and the green arrow is illuminated.

After completing the meal information screen, the participant will enter a general list for the first pass in the ASA24 multiple-pass approach. Enter first meal to begin.

- List all main foods for that first meal
- Screen is separated into three sections
 - Commands – allows you to edit food/ink or meal
 - My selections – place where selected food/ink needs to go to build each meal
 - Add foods – search for food/inks in this section
 - Click and drag or double click selected food to center

Public reporting burden for this collection of information is estimated to average 30 minutes per response, including the time for reviewing instructions, searching existing data sources, gathering and maintaining the data needed, and completing and reviewing the collection of information. **An agency may not conduct or sponsor, and a person is not required to respond to, a collection of information unless it displays a currently valid OMB control number.** Send comments regarding this burden estimate or any other aspect of this collection of information, including suggestions for reducing this burden, to: NIH, Project Clearance Branch, 6705 Rockledge Drive, MSC 7974, Bethesda, MD 20892-7974, ATTN: PRA (0925-0593). Do not return the completed form to this address.



PASS 2:

Pass 2 begins with a quick review of omission (before, between and after meals). Completion of Pass 2 permits the participant to obtain greater detail of food and amounts consumed. Key points of this pass include:

- Entering food details
 - Type of food (i.e. fried egg, tap water)
 - Food amount – select best size measure
 - Enter additions to food/beverages
- Complete detail for each meal (all foods) and day (all meals)
- All detail for foods listed must be completed before able to go on to next meal.

Additionally must complete all meals before going on to next pass.

Notice the meals entered are compressed at bottom (lunch and dinner).

Notice also that the food detail expands. Can select many added food items. The “oops” key allows the participant to fix foods entered accidentally.

ASA24 - Mozilla Firefox
 westat.com https://asa24beta.westat.com/App.html

ASA24
 ASA24 Automated Self-administered 24-hour Recall Client (BETA 4.04)

COMMANDS

ADD A MEAL ADD A FOOD

DELETE A MEAL DELETE A FOOD

EDIT MEAL MOVE FOOD

COPY FOOD

EDIT FOOD

OOPS

DONE WITH ALL MEALS

MY SELECTIONS

Breakfast - 7:00 AM

- 1% milk
 - Container type?
 - Mug
 - Container size?
 - 12 fluid ounces
 - Amount you drank?
 - 25 mugs
- Oatmeal (regular)
- Western omelet

Lunch - 12:15 PM

Dinner - 8:30 PM

ADD DETAILS

1% milk : Anything Added?

Nothing Added

- Coffee, specialty coffees
- Flavored milk drinks
- Milk
- Sugars and sugar substitutes
 - Chocolate syrup (regular)
 - Chocolate syrup (unknown kind)
 - Fruit syrup
 - Fudge topping
 - Hot chocolate mix
 - Maple syrup
 - Ovaltine powder
 - Strawberry drink powder
 - Strawberry syrup

PASS 3:

At this pass, the participant or diet research interviewer will review what has been entered and for any omissions for each meal and the entire day. The following steps will complete this last pass:

- Select done with all meals.
- Review for omissions
- Suggest read food/inks out loud
- Think about all day yesterday
- Review for any forgotten foods