



# Mother and Infant Home Visiting Program Evaluation MIHOPE



# Presentation Overview

- ▶ Project description and management for MIHOPE
- ▶ MIHOPE research questions and study design
- ▶ Benefits of participation
- ▶ Roles and responsibilities of participation
- ▶ MIHOPE timeline
- ▶ Stages for state/program site selection

# What is MIHOPE?

## Mother and Infant Home Visiting Program Evaluation

- ▶ Large-scale evaluation of the effectiveness of home visiting models supported by MIECHV
- ▶ Includes 85 program sites in 12 states nationwide
- ▶ Focuses on models serving at-risk expectant families and infants to 6 months

# Who is Conducting MIHOPE?

**Sponsored by:** U.S. Department of Health and Human Services, Administration for Children and Families, Office of Planning Research and Evaluation (OPRE) and Health Resources and Services Administration (HRSA)

**Authorization:** Maternal, Infant and Early Childhood Home Visiting Program (MIECHV), Patient Protection and Affordable Care Act of 2010

## **Project Team:**

- ▶ MDRC
- ▶ James Bell Associates
- ▶ Johns Hopkins University
- ▶ Mathematica Policy Research

# What Home Visiting Models are in MIHOPE?

- ▶ Evidence-based models supported with MIECHV funding
- ▶ Models serving expectant families or those with infants
- ▶ Models selected for implementation by at least 10 states
- ▶ Models:
  - Early Head Start-Home Visiting
  - Healthy Families America
  - Nurse Family Partnership
  - Parents as Teachers

# Three components of the evaluation design

- ▶ Analysis of state needs assessments
- ▶ Effectiveness study
  - Reports variation in impacts for sites and populations with different characteristics
  - Incorporates study of health disparities and outcomes
  - Includes implementation study
- ▶ Economic evaluation

# How will we learn about the needs of communities operating MIECHV programs?

- ▶ Before MIECHV, what current home visiting practices did states describe?
- ▶ What community needs and gaps in services did states identify?
- ▶ How did states intend for MIECHV home visiting programs to address the gaps?

Data sources: state needs assessments, state plans, and competitive applications; interviews with state administrators

# How will we learn about program impacts?

- ▶ How do the outcomes for families enrolled in home visiting compare to similar families?
  - On maternal health, parent well-being, family economic self-sufficiency, child health and development, and parenting practices?
  - Do some families benefit more?
  - What are the impacts for each evidence-based model?

Data sources: vital, child welfare, and Medicaid data; baseline family survey; direct child assessments; parent-child interactions; and follow-up survey.



# How will we learn about program implementation?

- ▶ What services are provided and to whom?
  - How are services delivered?
  - What are the characteristics of the families?
  - What challenges are encountered and how are they addressed?
  - What alternative programs are available?
  - What program characteristics are associated with family engagement and with bigger impacts on family outcomes?

Data sources: MIHOPE logs, staff surveys and inventories, program staff interviews, in-person visits to programs, and video recordings during home visits

# How will we learn about economic effects?

- ▶ What is the cost of serving the average family?
- ▶ What are the average program costs for a local program site?
- ▶ How does the cost compare to the impacts generated by the program?

Data sources: program fiscal data, service delivery logs

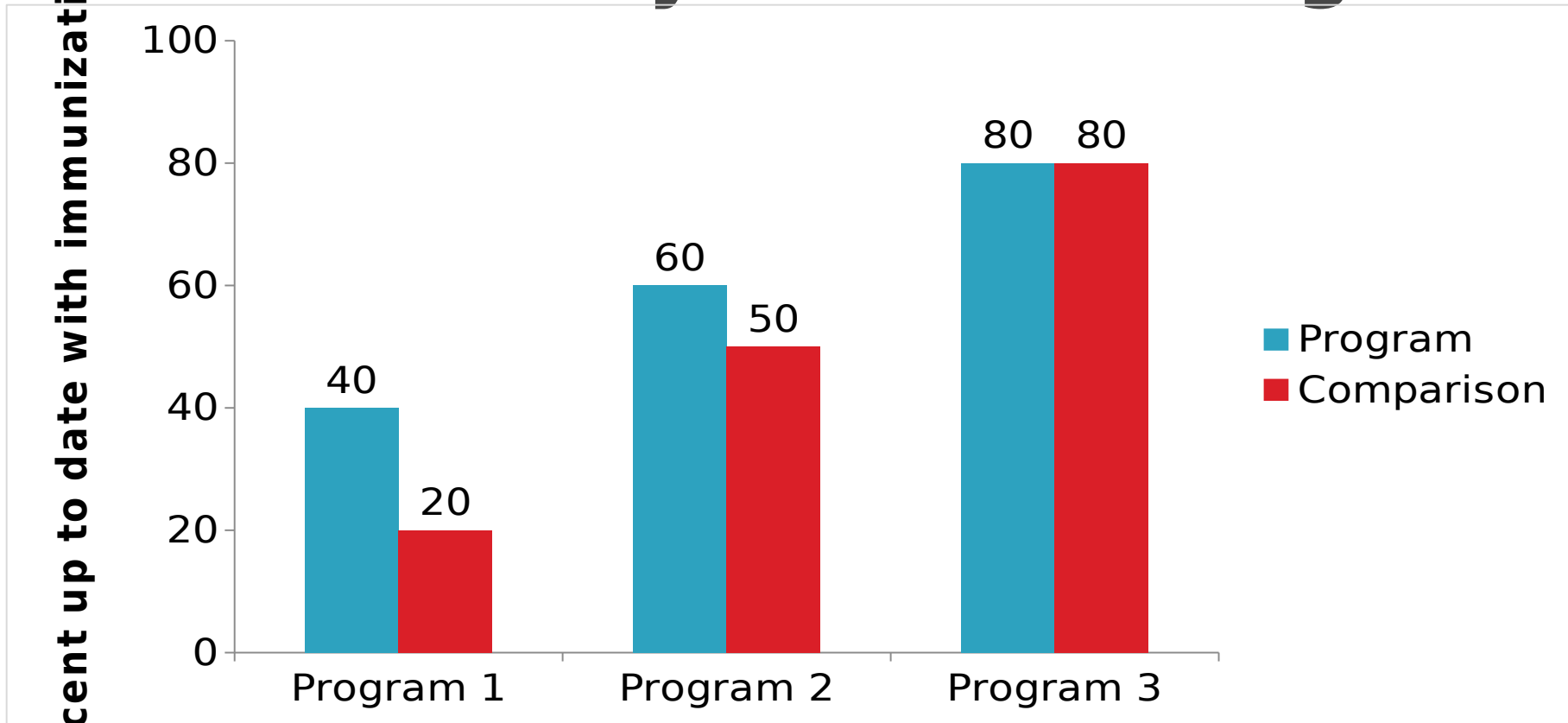
# What is Random Assignment?

- ▶ A lottery-like process to place individuals into a program group and a comparison group
- ▶ Increases the likelihood that groups have similar characteristics on average before treatment, so the differences over time in the outcomes for the groups are more likely the effect of the program services offered to the program group
- ▶ Allows you to measure the impacts (effects) on outcomes for each group, not for individuals in the groups

# Why Use Random Assignment?

- ▶ Fair and equitable way to determine who receives program services
- ▶ More reliable way to measure program effects than statistical controls alone
- ▶ Widely used in social service settings
- ▶ Endorsed by:
  - The Department of Health and Human Services
  - The Office of Management and Budget
  - The Department of Labor
  - The Department of Education
  - Other federal and private agencies

# Without Comparisons, Results May Be Misleading

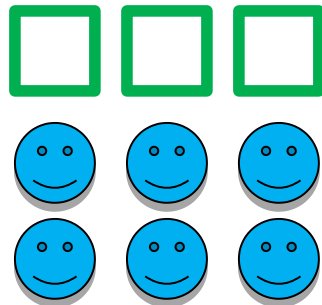


Percent up to date with immunizations

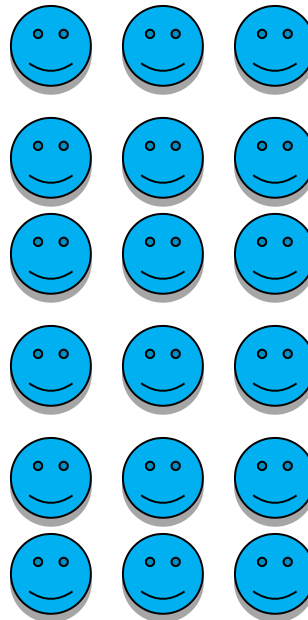
*Without a comparison, Program 3 might appear to be the most effective.*

# Capacity expands with federal funds and does not change with RA

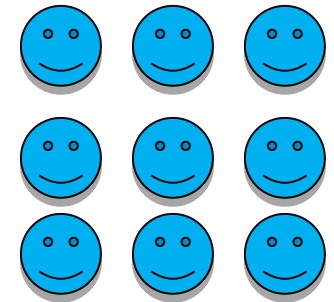
EXPANDED  
CAPACITY



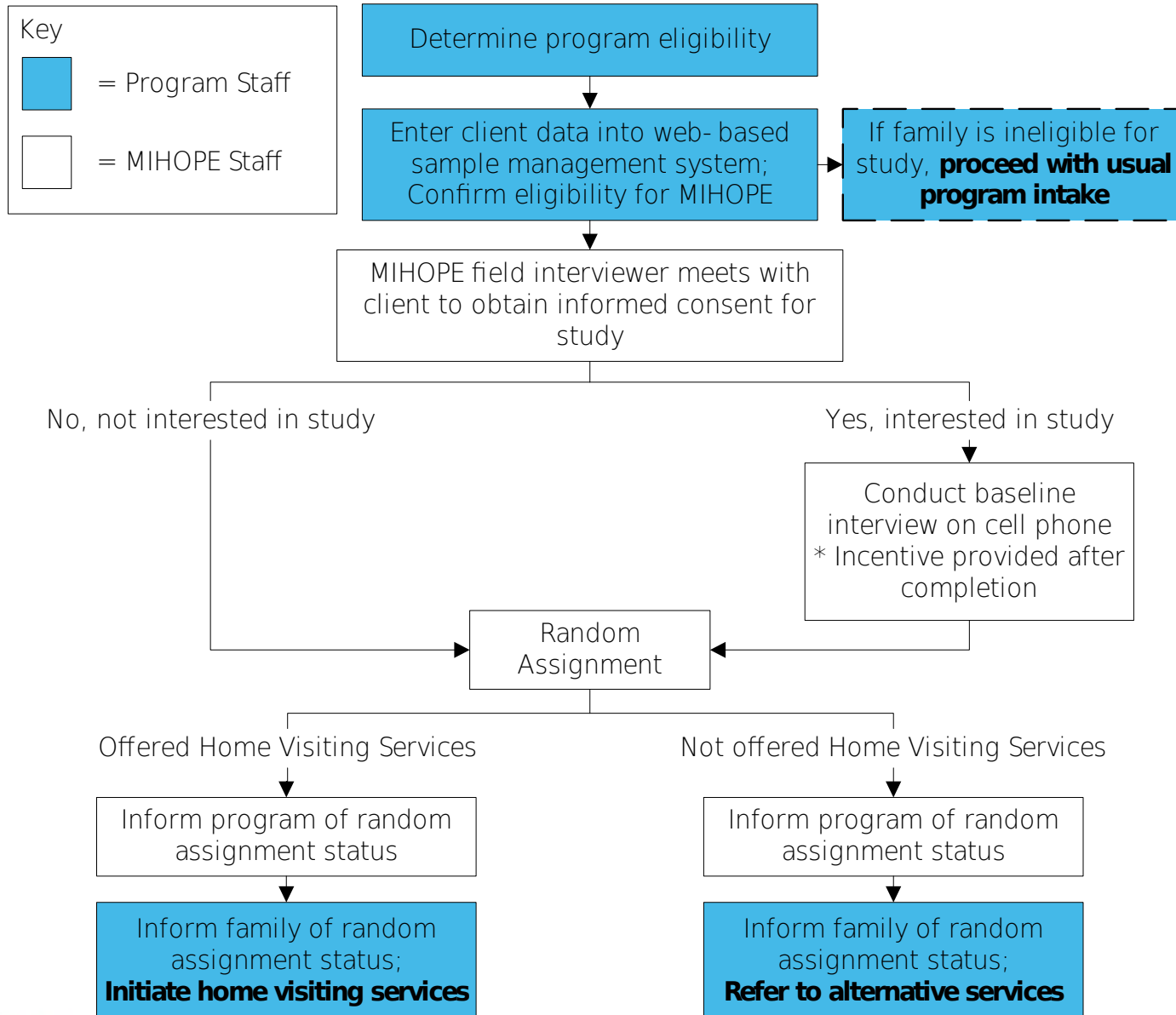
ELIGIBLE  
FAMILIES



ENROLLED  
FAMILIES



# Summary of Enrollment



# What are the Benefits to Participation in the Evaluation?

- ▶ National recognition for your state and MIECHV program
- ▶ Builds strong evidence base to inform home visiting policy decision making
- ▶ Provides information on what differences home visiting programs make
- ▶ Funds to support staff participation in research activities
- ▶ Provides program and state feedback about program participation



# What Will State/Programs Do?

## **States:**

- ▶ Facilitate agency's recruitment of program sites
- ▶ Help negotiate access to state administrative records for purposes of the study

## **Programs:**

- ▶ Recruit approximately 60 families (30 in the program group and 30 in the comparison group)
- ▶ Staff and administration participate in interviews and surveys
- ▶ Provide program records such as staffing, training, and cost information
- ▶ Complete and submit program participation logs
- ▶ Facilitate home visits videotaped by research staff (9 families, 2 visits each)

# What are We Looking for in Local Programs?

- ▶ Operating location that can recruit approximately 60 families in 12-15 months and provide services to 30
- ▶ Has more than 2 years experience offering home visiting services
- ▶ Is offering at least 1 of the 4 models selected for evaluation

# What Will the Research Team Do?

- ▶ Explain research design and provide training on research procedures
- ▶ Enroll program participants in the study and collect consent forms
- ▶ Collect data through surveys, interviews, observations, and program and administrative records
- ▶ Provide funding to programs to offset costs of research participation
- ▶ Analyze data, provide results, and disseminate information

# What are the Stages of State/ Program Site Selection?

- ▶ Meet with study team to learn more about the evaluation and provide information
- ▶ Discuss research design and reach agreement on roles and responsibilities
- ▶ Prepare for research enrollment and data collection
- ▶ Implement evaluation procedures
- ▶ Study team monitors research procedures and provides feedback

# What is the MIHOPE Timeline?

## **Phase 1**

- ▶ Site recruitment and selection: 2012
- ▶ Enroll families in the evaluation: mid 2012 through 2014
- ▶ Report to Congress on characteristics of enrolled families: 2015

## **Phase 2** (date is tentative)

- ▶ Report on program impacts: 2017

# Need More Information?

If you would like additional information about



## **Mother and Infant Home Visiting Program Evaluation**

Please contact [Sharon.rowser@mdrc.org](mailto:Sharon.rowser@mdrc.org) **or**  
[Lauren.supplee@acf.hhs.gov](mailto:Lauren.supplee@acf.hhs.gov) for more  
information.