



Agricultural Prices

ISSN: 1937-4216

Released March 29, 2012, by the National Agricultural Statistics Service (NASS), Agricultural Statistics Board, United States Department of Agriculture (USDA).

March Farm Prices Received Index Up 5 Points

The preliminary All Farm Products Index of Prices Received by Farmers in March, at 186 percent, based on 1990-1992=100, increased 5 points (2.8 percent) from February. The Crop Index is up 8 points (3.9 percent) and the Livestock Index increased 3 points (1.9 percent). Producers received higher prices for soybeans, corn, broilers, and cattle and lower prices for milk, strawberries, snap beans, and lettuce. In addition to prices, the overall index is affected by the seasonal change based on a 3-year average mix of commodities producers sell. Increased monthly movement of soybeans, strawberries, broilers, and milk offset decreased marketings of corn, cattle, cotton, and wheat.

The preliminary All Farm Products Index is up 13 points (7.5 percent) from March 2011. The Food Commodities Index, at 173, increased 5 points (3.0 percent) from last month and March 2011.

Prices Paid Index up 1 Point

The March Index of Prices Paid for Commodities and Services, Interest, Taxes, and Farm Wage Rates (PPITW) is 210 percent of the 1990-1992 average. The index is up 1 point (0.5 percent) from February and 9 points (4.5 percent) above March 2011. Compared with February, higher prices in March for diesel, gasoline, feed grains, and concentrates offset lower prices for nitrogen, potash & phosphate, feeder cattle, and supplements.

Prices Received, Prices Paid, and Ratio of Prices Received to Prices Paid Indexes 1990-1992 Base – United States: March 2012 with Comparisons

| Index | March 2011 | February 2012 | March 2012 |
|---|------------|---------------|------------|
| Prices received by farmers | 173 | 181 | 186 |
| Prices paid by farmers | 201 | 209 | 210 |
| Ratio of prices received to prices paid | 86 | 87 | 89 |

Contents

| | |
|--|----|
| Prices Received by Farmers | 4 |
| Prices Received Indexes – United States: March 2012 with Comparisons | 5 |
| Prices Received and Prices Paid Indexes by Month for Selected Groups – United States: 2011 and 2012, 1990-1992 Base | 5 |
| Received Indexes by Month, Livestock Products, All Products, and All Crops – United States: 1990-1992=100 Chart..... | 6 |
| Received Indexes by Month, Food Grains, Feed Grains & Hay, and Oilseeds – United States: 1990-1992=100 Chart..... | 6 |
| Received Indexes by Month, Fruit & Nut and Commercial Vegetables – United States: 1990-1992=100 Chart..... | 7 |
| Received Indexes by Month, Meat Animal, Dairy Products, and Poultry & Eggs – United States: 1990-1992=100 Chart..... | 7 |
| Prices Received for Field Crops and Fruits – United States: March 2012 with Comparisons..... | 8 |
| Prices Received for Vegetables and Livestock – United States: March 2012 with Comparisons | 9 |
| Prices Received for Corn by Month – United States Chart..... | 10 |
| Prices Received for Wheat by Month – United States Chart | 10 |
| Prices Received for Upland Cotton by Month – United States Chart..... | 11 |
| Prices Received for Soybeans by Month – United States Chart | 11 |
| Prices Received for Cattle by Month – United States Chart | 12 |
| Prices Received for Milk by Month – United States Chart..... | 12 |
| Prices Received for Hogs by Month – United States Chart | 13 |
| Prices Received for Poultry by Month – United States Chart..... | 13 |
| Prices Received for All Wheat, Corn, and Soybeans by Month – United States: 2012 with Comparisons..... | 14 |
| Prices Received for Beef Cattle and All Hogs by Month – United States: 2012 with Comparisons | 14 |
| Prices Received for All Wheat – States and United States: March 2012 with Comparisons..... | 15 |
| Prices Received for Winter Wheat – States and United States: March 2012 with Comparisons..... | 15 |
| Prices Received for Durum Wheat – States and United States: March 2012 with Comparisons..... | 16 |
| Prices Received for Spring Wheat – States and United States: March 2012 with Comparisons | 16 |
| Prices Received for All Barley – States and United States: March 2012 with Comparisons..... | 17 |
| Prices Received for Malting Barley – States: March 2012 with Comparisons | 17 |
| Prices Received for Feed Barley – States: March 2012 with Comparisons | 17 |
| Prices Received for Corn – States and United States: March 2012 with Comparisons | 18 |
| Prices Received for Soybeans – States and United States: March 2012 with Comparisons | 18 |
| Prices Received for Oats – States and United States: March 2012 with Comparisons | 19 |
| Prices Received for Sorghum Grain – States and United States: March 2012 with Comparisons..... | 19 |
| Prices Received for Dry Beans – States and United States: March 2012 with Comparisons | 20 |
| Prices Received for Peanuts (In-Shell) – States and United States: March 2012 with Comparisons | 20 |
| Prices Received for Sunflower – States and United States: March 2012 with Comparisons..... | 21 |
| Prices Received for Canola – States and United States: March 2012 with Comparisons..... | 21 |
| Prices Received for Flaxseed – States and United States: March 2012 with Comparisons | 21 |
| Prices Received for Upland Cotton and Cottonseed – States and United States: March 2012 with Comparisons..... | 22 |
| Prices Received and Farm Marketings for Upland Cotton and Rice – United States: March 2012 with Comparisons | 22 |
| Prices Received for Hay by Type – States and United States: March 2012 with Comparisons | 23 |
| Prices Received for Apples – States and United States: March 2012 with Comparisons | 23 |
| Prices Received for Citrus Fruits by Utilization – States and United States: March 2011 | 24 |
| Prices Received for Citrus Fruits by Utilization – States and United States: February 2012 | 25 |
| Prices Received for Citrus Fruits by Utilization – States and United States: March 2012 | 26 |
| Prices Received for Potatoes – States and United States: March 2012 with Comparisons..... | 27 |
| Prices Received for All Milk – States and United States: March 2012 with Comparisons..... | 28 |
| Prices Received for Milk Cows – States and United States: January 2012 with Comparisons..... | 29 |
| Commodity Parity Prices and Price as Percent of Parity Price – United States: March 2012 with Comparisons | 30 |

| | |
|---|----|
| Commodity Parity Prices – United States: March 2012 with Comparisons | 31 |
| Reliability of Prices Received Estimates | 33 |
| Prices Paid by Farmers..... | 34 |
| Prices Paid Indexes and Related Parity Ratios – United States: March 2012 with Comparisons..... | 35 |
| Prices Paid Indexes and Annual Weights for Input Components and Sub-Components – United States: March 2012 with Comparisons..... | 36 |
| Paid Indexes by Month, All Items and Production Items – United States: 1990-1992=100 Chart | 37 |
| Paid Indexes, Annual Averages, Production Items, Interest, Taxes, and Wages – United States: 1990-1992=100 Chart | 37 |
| Paid Indexes by Farm Type, All Items – United States: 1990-1991=100 Chart..... | 38 |
| Paid Indexes by Origin, All Production Items – United States: 1990-1992=100 Chart | 38 |
| Paid Indexes by Non-Farm Sector, Supplies & Repairs, Fertilizer, Machinery, and Fuel – United States: 1990-1992=100 Chart | 39 |
| Paid Indexes by Month, Feed and Replacement Livestock – United States: 1990-1992=100 Chart..... | 39 |
| Feed Price Ratios – United States: March 2012 with Comparisons | 40 |
| Prices Received Used to Calculate Feed Price Ratios – United States: March 2012 with Comparisons..... | 40 |
| Prices Paid for Feeder Livestock – United States: March 2012 with Comparisons..... | 40 |
| Reliability of Prices Paid Estimates | 41 |
| Information Contacts | 42 |

Prices Received by Farmers

The March All Farm Products Index is 186 percent of its 1990-1992 base, up 2.8 percent from the February index and 7.5 percent above the March 2011 index.

All crops: The March index, at 213, increased 3.9 percent from February and is 7.6 percent above March 2011. The index groups with the largest contributions to the increase were feed grains & hay, oilseeds, commercial vegetables, and fruits & nuts.

Food grains: The March index, at 230, is 1.8 percent above the previous month but 1.3 percent below a year ago. The price of March all wheat, at \$7.24 per bushel, is up 14 cents from February but 31 cents below March 2011.

Feed grains & hay: The March index, at 276, increased 3.0 percent from last month and is 20 percent above a year ago. The corn price, at \$6.48 per bushel, is up 20 cents from last month and 95 cents above March 2011. The all hay price, at \$181 per ton, is \$5.00 higher than February and \$55.00 higher than March 2011. Sorghum grain, at \$11.30 per cwt, increased 50 cents from February and 70 cents from March last year.

Cotton, Upland: The March index, at 154, is up 1.3 percent from February and 11 percent above last year. The March price, at 93.6 cents per pound, is up 1.2 cents from the previous month and 9.2 cents above last March.

Oilseeds: The March index, at 235, increased 6.8 percent from February and is 3.1 percent higher than March 2011. The soybean price, at \$13.10 per bushel, increased 90 cents from February and is 40 cents higher than March 2011.

Fruits & nuts: The March index, at 163, is 5.2 percent higher than February and 13 percent above a year ago. The price increases for oranges and apples more than offset price decreases for strawberries and pears.

Commercial vegetables: The March index, at 129, increased 15 percent from last month but is 39 percent below March 2011. Price increases during March for tomatoes and broccoli more than offset price declines for snap beans and lettuce.

Potatoes & dry beans: The March index, at 180, is up 3.4 percent from last month but 0.6 percent below March 2011. The all potato price, at \$9.74 per cwt, is up 43 cents from February but down \$1.00 from last March. The all dry bean price, at \$49.00 per cwt, is up \$2.30 from the previous month and \$19.10 above March 2011.

Livestock and products: The March index, at 161, is 1.9 percent above last month and 5.9 percent higher than March 2011. Compared with a year ago, prices are higher for cattle, broilers, eggs, calves, hogs, and turkeys. The price for milk is down from last year.

Meat animals: The March index, at 169, is up 1.8 percent from last month and 12 percent higher than last year. The March hog price, at \$65.70 per cwt, is up 20 cents from February and \$2.80 higher than a year ago. The March beef cattle price of \$130 per cwt is up \$3.00 from last month and \$15.00 higher than March 2011.

Dairy products: The March index, at 133, is down 2.2 percent from a month ago and 15 percent lower than March last year. The March all milk price of \$17.40 per cwt is 30 cents lower than last month and down \$3.00 from March 2011.

Poultry & eggs: The March index, at 174, is up 8.1 percent from February and 16 percent above a year ago. The March market egg price, at 79.1 cents per dozen, increased 12.2 cents from February and is 13.9 cents above March 2011. The March broiler price, at 57.0 cents per pound, is up 4.0 cents from February and 8.0 cents above a year ago. The March turkey price, at 68.5 cents per pound, is up 3.5 cents from the previous month and 8.6 cents from a year earlier.

Prices Received Indexes – United States: March 2012 with Comparisons

[Revised historical price indexes for months not shown are available at www.nass.usda.gov]

| Index | 1910-1914 Base | | | | 1990-1992 Base | | |
|------------------------------|-------------------|------------|---------------|------------|----------------|---------------|------------|
| | 1990-1992 Average | March 2011 | February 2012 | March 2012 | March 2011 | February 2012 | March 2012 |
| | (percent) | (percent) | (percent) | (percent) | (percent) | (percent) | (percent) |
| All products | 639 | 1100 | 1148 | 1179 | 173 | 181 | 186 |
| All crops | 500 | 979 | 1018 | 1054 | 198 | 205 | 213 |
| Food grains | 325 | 739 | 715 | 730 | 233 | 226 | 230 |
| Feed grains & hay | 363 | 820 | 955 | 984 | 230 | 268 | 276 |
| Cotton, Upland | 517 | 714 | 782 | 792 | 139 | 152 | 154 |
| Tobacco | 1263 | 1491 | 1566 | 1566 | 99 | 104 | 104 |
| Oilseeds | 554 | 1250 | 1208 | 1288 | 228 | 220 | 235 |
| Fruits & nuts | 716 | 1007 | 1079 | 1138 | 144 | 155 | 163 |
| Commercial vegetables | 698 | 1523 | 803 | 922 | 213 | 112 | 129 |
| Potatoes & dry beans | 540 | 915 | 881 | 914 | 181 | 174 | 180 |
| Other crops | 493 | 643 | 645 | 645 | 131 | 131 | 131 |
| Livestock and products | 768 | 1166 | 1208 | 1234 | 152 | 158 | 161 |
| Meat animals | 1021 | 1538 | 1694 | 1717 | 151 | 166 | 169 |
| Dairy products | 799 | 1255 | 1089 | 1071 | 156 | 136 | 133 |
| Poultry & eggs | 282 | 421 | 452 | 489 | 150 | 161 | 174 |
| Food commodities | (NA) | (NA) | (NA) | (NA) | 168 | 168 | 173 |

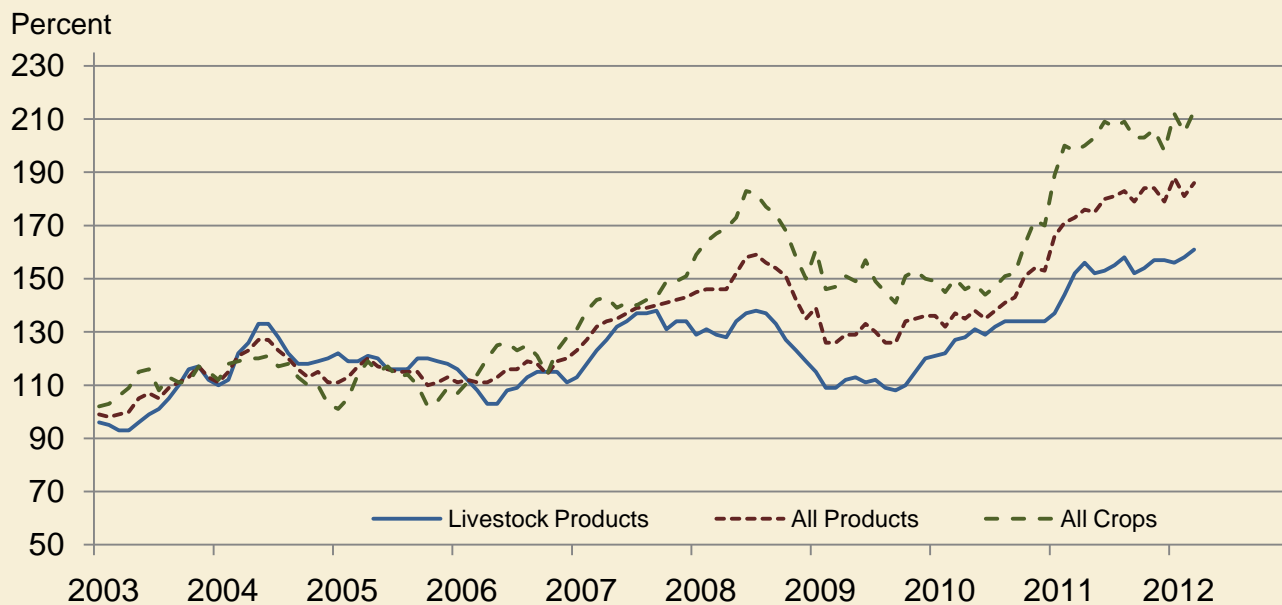
(NA) Not available.

Prices Received and Prices Paid Indexes by Month for Selected Groups – United States: 2011 and 2012, 1990-1992 Base

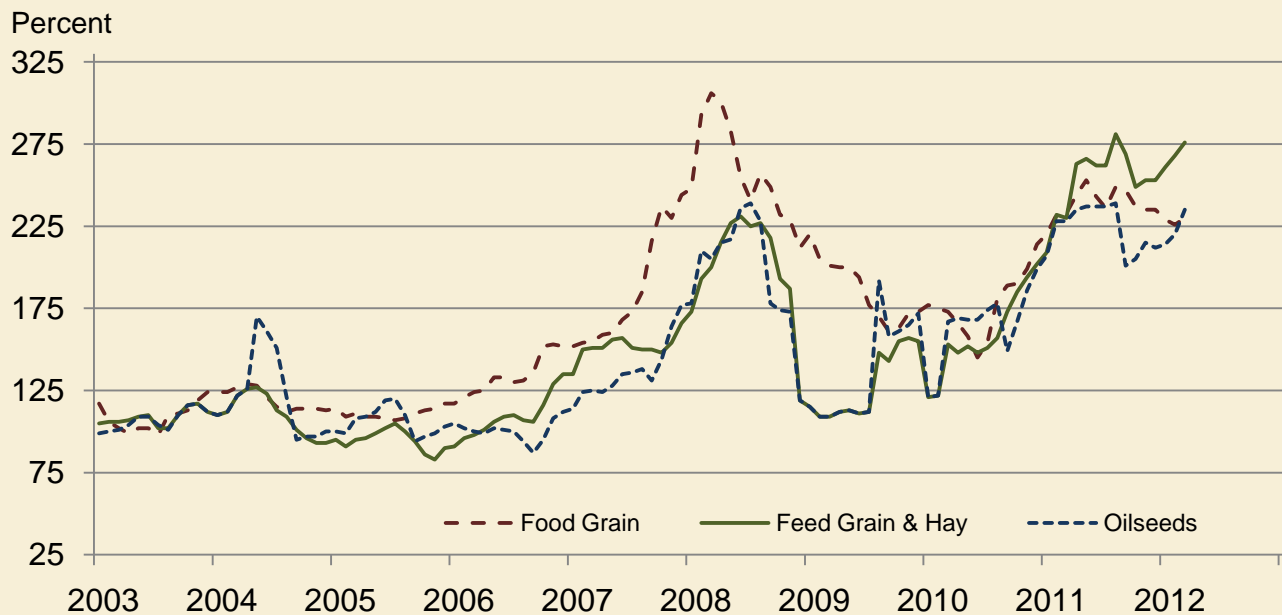
[Revised historical price indexes for months not shown are available at www.nass.usda.gov. Blank data cells indicate estimation period has not yet begun]

| Month | Index of prices received | | | | | | Index of prices paid | | | |
|-----------------|--------------------------|-----------|-----------|-----------|------------------------|-----------|----------------------|-----------|------------------|-----------|
| | All farm products | | All crops | | Livestock and products | | All items | | Production items | |
| | 2011 | 2012 | 2011 | 2012 | 2011 | 2012 | 2011 | 2012 | 2011 | 2012 |
| | (percent) | (percent) | (percent) | (percent) | (percent) | (percent) | (percent) | (percent) | (percent) | (percent) |
| January | 166 | 188 | 189 | 212 | 137 | 156 | 195 | 208 | 204 | 221 |
| February | 171 | 181 | 200 | 205 | 144 | 158 | 197 | 209 | 207 | 222 |
| March | 173 | 186 | 198 | 213 | 152 | 161 | 201 | 210 | 211 | 222 |
| April | 176 | | 200 | | 156 | | 203 | | 215 | |
| May | 175 | | 203 | | 152 | | 203 | | 215 | |
| June | 180 | | 209 | | 153 | | 203 | | 215 | |
| July | 181 | | 207 | | 155 | | 204 | | 216 | |
| August | 183 | | 209 | | 158 | | 204 | | 216 | |
| September | 179 | | 203 | | 152 | | 204 | | 217 | |
| October | 184 | | 203 | | 154 | | 204 | | 216 | |
| November | 184 | | 206 | | 157 | | 205 | | 218 | |
| December | 179 | | 198 | | 157 | | 205 | | 217 | |

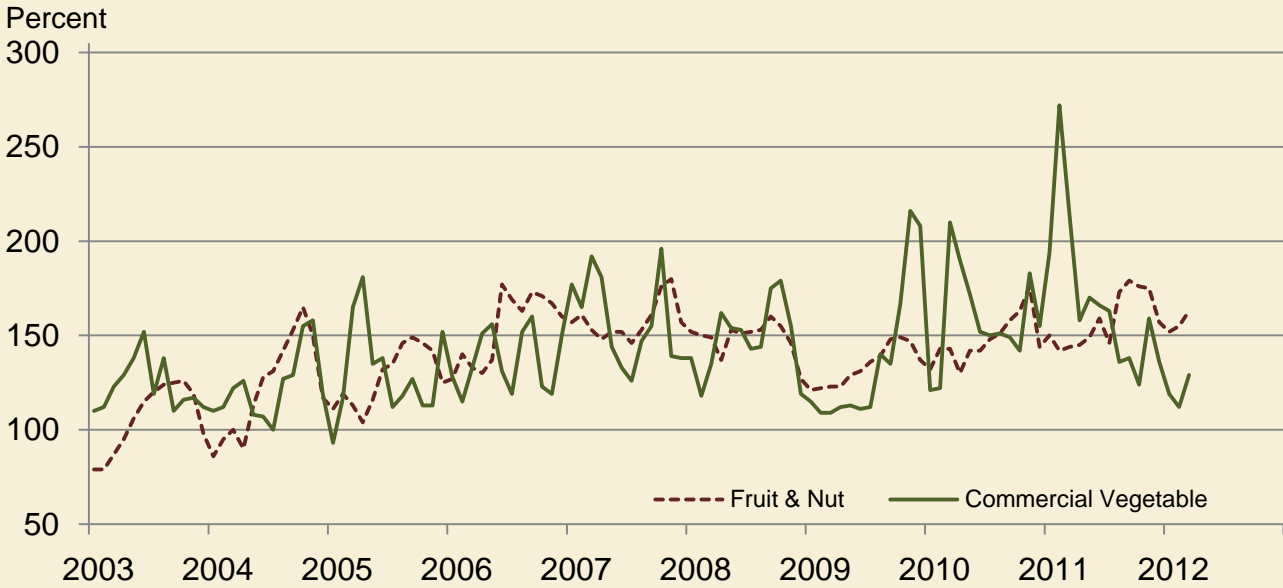
Received Indexes by Month, Livestock Products, All Products, and All Crops – United States: 1990-1992=100



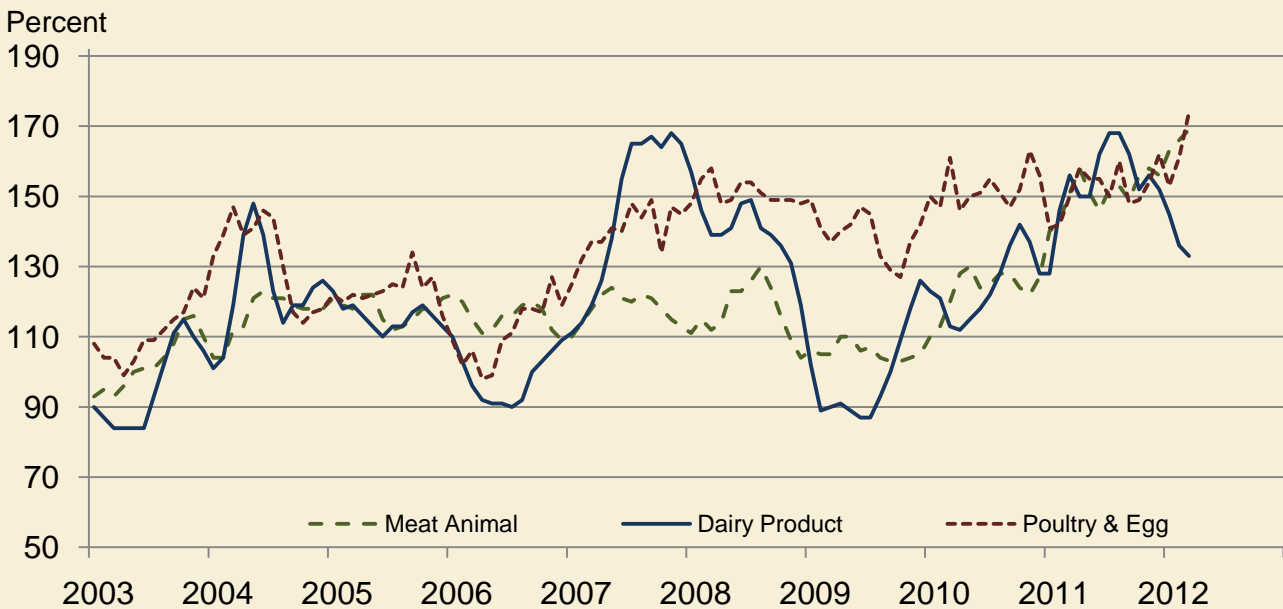
Received Indexes by Month, Food Grains, Feed Grains & Hay, and Oilseeds – United States: 1990-1992=100



Received Indexes by Month, Fruit & Nut and Commercial Vegetables – United States: 1990-1992=100



Received Indexes by Month, Meat Animal, Dairy Product, and Poultry & Egg – United States: 1990-1992=100



Prices Received for Field Crops and Fruits – United States: March 2012 with Comparisons

| Commodity | Average 1990-1992=100 | March 2011 | February 2012 | Preliminary March 2012 |
|------------------------------------|--------------------------|------------|---------------|---------------------------|
| Field crops | | | | |
| Austrian winter peas | dollars/cwt (NA) | (S) | (D) | (S) |
| Barley, all | dollars/bushel 2.12 | 4.29 | 5.39 | 5.37 |
| Feed | dollars/bushel 1.90 | 4.26 | 4.75 | 4.62 |
| Malting | dollars/bushel 2.43 | 4.29 | 5.47 | 5.50 |
| Beans, dry edible | dollars/cwt 19.10 | 29.90 | 46.70 | 49.00 |
| Canola | dollars/cwt (NA) | 23.40 | 24.80 | 26.00 |
| Chickpeas, all | dollars/cwt (NA) | 32.40 | 41.30 | (D) |
| Large | dollars/cwt (NA) | 35.40 | 44.80 | (D) |
| Small | dollars/cwt (NA) | 21.60 | (D) | (S) |
| Corn | dollars/bushel 2.30 | 5.53 | 6.28 | 6.48 |
| | | | | |
| Cotton, Upland | dollars/pound 0.606 | 0.844 | 0.924 | 0.936 |
| Cottonseed ¹ | dollars/ton 96.00 | (NA) | 275.00 | (NA) |
| Flaxseed | dollars/bushel 4.27 | 13.70 | 13.30 | 13.70 |
| Hay, all, baled | dollars/ton 76.30 | 126.00 | 176.00 | 181.00 |
| Alfalfa | dollars/ton 77.20 | 142.00 | 198.00 | 201.00 |
| Other | dollars/ton 60.00 | 99.50 | 130.00 | 139.00 |
| Lentils | dollars/cwt (NA) | 29.70 | 23.70 | 25.40 |
| Oats | dollars/bushel 1.22 | 3.28 | 3.46 | 3.58 |
| Peanuts, in-shell | dollars/pound 0.304 | 0.234 | 0.329 | 0.342 |
| Peas, dry edible | dollars/cwt (NA) | 10.90 | 15.10 | 15.80 |
| | | | | |
| Potatoes | dollars/cwt 5.82 | 10.74 | 9.31 | 9.74 |
| Rice, all | dollars/cwt 7.07 | 13.00 | 13.80 | 14.10 |
| Long | dollars/cwt (NA) | 11.60 | 13.20 | 13.20 |
| Medium and short | dollars/cwt (NA) | 18.50 | 15.30 | 16.00 |
| Sorghum grain | dollars/cwt 3.75 | 10.60 | 10.80 | 11.30 |
| Soybeans | dollars/bushel 5.61 | 12.70 | 12.20 | 13.10 |
| Sunflowers, all | dollars/cwt 9.50 | 28.30 | 29.60 | 28.20 |
| | | | | |
| Wheat, all | dollars/bushel 2.96 | 7.55 | 7.10 | 7.24 |
| Winter | dollars/bushel 2.93 | 7.02 | 6.67 | 6.65 |
| Durum | dollars/bushel 2.86 | 8.09 | 8.95 | 9.21 |
| Other spring | dollars/bushel 3.11 | 8.07 | 8.01 | 8.14 |
| Hard red winter ² | dollars/bushel (NA) | 7.10 | 6.73 | (NA) |
| Soft red winter ² | dollars/bushel (NA) | 6.70 | 7.13 | (NA) |
| Hard red spring ² | dollars/bushel (NA) | 8.12 | 8.21 | (NA) |
| White ² | dollars/bushel 3.24 | 6.65 | 6.43 | (NA) |
| Fruits | | | | |
| Citrus, equivalent on-tree | | | | |
| Grapefruit | dollars/box 5.77 | 5.69 | 5.96 | 6.28 |
| Lemons | dollars/box 10.10 | 5.70 | 11.54 | 13.00 |
| Oranges | dollars/box 5.79 | 6.77 | 7.64 | 8.12 |
| Tangelos | dollars/box 5.82 | (NA) | 14.33 | (NA) |
| Tangerines and mandarins | dollars/box 15.11 | 13.23 | 18.50 | 23.52 |
| Noncitrus, fresh | | | | |
| Apples ³ | dollars/pound 0.212 | 0.282 | 0.354 | 0.364 |
| Grapes ³ | dollars/ton 506.00 | (S) | (S) | (NA) |
| Peaches ³ | dollars/ton 432.00 | (S) | (S) | (S) |
| Pears ³ | dollars/ton 370.00 | 625.00 | 472.00 | 379.00 |
| Strawberries | dollars/cwt 56.00 | 99.20 | 113.00 | 105.00 |

(D) Withheld to avoid disclosing data for individual operations.

(NA) Not available.

(S) Insufficient number of reports to establish an estimate.

¹ Marketing year August - February.

² Preliminary estimates not set for this item.

³ Equivalent packinghouse-door returns for California, Michigan, New York (apples only), and Washington (apples, peaches, and pears). Prices as sold for other states.

Prices Received for Vegetables and Livestock – United States: March 2012 with Comparisons

[Price data source for livestock and poultry commodities is United States Department of Agriculture's Agricultural Marketing Service]

| Commodity | Average 1990-1992=100 | March 2011 | February 2012 | Preliminary March 2012 |
|---|--------------------------|------------|---------------|---------------------------|
| Vegetables, fresh ¹ | | | | |
| Asparagusdollars/cwt | 79.80 | 132.00 | (S) | (S) |
| Beans, snap ²dollars/cwt | (NA) | 48.80 | 77.20 | 57.70 |
| Broccolidollars/cwt | 22.50 | 40.80 | 22.50 | 33.90 |
| Cantaloupes ²dollars/cwt | (NA) | (S) | (S) | (S) |
| Carrotsdollars/cwt | 13.20 | 44.60 | 26.30 | 26.70 |
| Cauliflowerdollars/cwt | 26.80 | 51.30 | 31.80 | 48.60 |
| Celerydollars/cwt | 11.60 | 29.50 | 12.60 | 12.00 |
| Corn, sweetdollars/cwt | 15.70 | 42.40 | 31.00 | 35.60 |
| Cucumbers ²dollars/cwt | (NA) | (S) | (S) | (S) |
| Lettucedollars/cwt | 11.90 | 35.20 | 12.60 | 11.90 |
| Onions ³dollars/cwt | 12.80 | 8.04 | 5.97 | 7.35 |
| Tomatoesdollars/cwt | 32.30 | 98.70 | 30.60 | 50.50 |
| Livestock | | | | |
| Calvesdollars/cwt | 94.30 | 148.00 | 184.00 | 185.00 |
| Cattle, all beefdollars/cwt | 72.90 | 115.00 | 127.00 | 130.00 |
| Cows ⁴dollars/cwt | 49.60 | 75.20 | 82.00 | 84.50 |
| Steers and heifersdollars/cwt | 77.10 | 118.00 | 131.00 | 134.00 |
| Milk cows ⁵dollars/head | 1130.00 | (NA) | (NA) | (NA) |
| Hogs, alldollars/cwt | 47.70 | 62.90 | 65.50 | 65.70 |
| Barrows and giltsdollars/cwt | 48.40 | 63.10 | 65.80 | 65.80 |
| Sowsdollars/cwt | 39.50 | 58.00 | 58.30 | 60.40 |
| Dairy and poultry | | | | |
| Milk, all ⁶dollars/cwt | 13.06 | 20.40 | 17.70 | 17.40 |
| Fat test percent | 3.66 | 3.74 | 3.75 | 3.70 |
| Broilers, live ⁷dollars/pound | 0.317 | 0.490 | 0.530 | 0.570 |
| Eggs, all ⁸dollars/dozen | 0.643 | 0.849 | 0.885 | 0.995 |
| Market ^{8 9}dollars/dozen | 0.546 | 0.652 | 0.669 | 0.791 |
| Turkeys, live ^{8 10 11}dollars/pound | 0.380 | 0.599 | 0.650 | 0.685 |
| Adjusted for seasonal variation | | | | |
| Eggs, alldollars/dozen | 0.545 | 0.759 | 0.842 | 0.890 |
| Seasonal factor percent | 100 | 112 | 105 | 112 |
| Milk, all ⁶dollars/cwt | 9.71 | 21.80 | 18.00 | 18.60 |
| Seasonal factor percent | 100 | 94 | 99 | 94 |

(NA) Not available.

(S) Insufficient number of reports to establish an estimate.

¹ Beginning January 2006, point of first sale. FOB shipping point for prior years.

² Monthly estimates began January 1995.

³ Includes some processing.

⁴ Beef cows and cull dairy cows sold for slaughter.

⁵ Animals sold for dairy herd replacement only. Prices available for January, April, July, and October.

⁶ Before deductions for hauling. Includes quality, quantity, and other premiums. Excludes hauling subsidies.

⁷ Live weight equivalent price.

⁸ Mid-month price.

⁹ Also referred to as table eggs.

¹⁰ Live weight equivalent price is used when actual live weight price is not available.

¹¹ Beginning January 2011, price reflects FOB shipping point basis. Prior year price reflects delivered basis.

Prices Received for Corn by Month – United States

Dollars per bushel



Prices Received for Wheat by Month – United States

Dollars per bushel



Prices Received for Upland Cotton by Month – United States

Dollars per pound



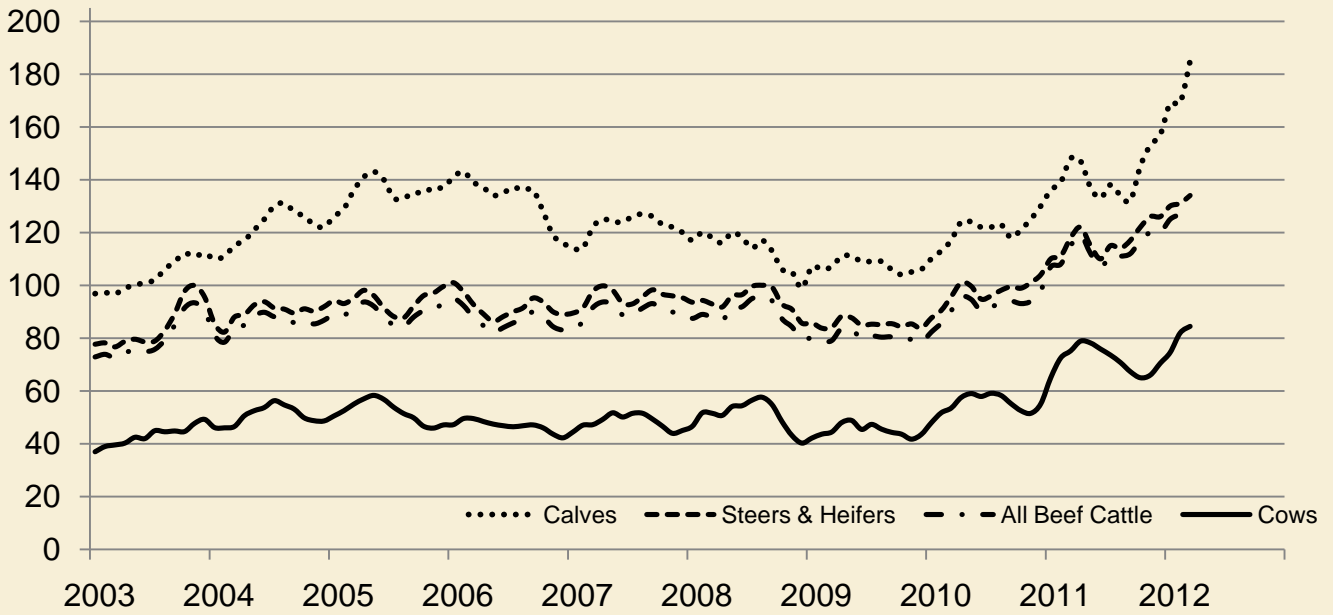
Prices Received for Soybeans by Month – United States

Dollars per bushel



Prices Received for Cattle by Month – United States

Dollars per cwt



Prices Received for Milk by Month – United States

Dollars per cwt



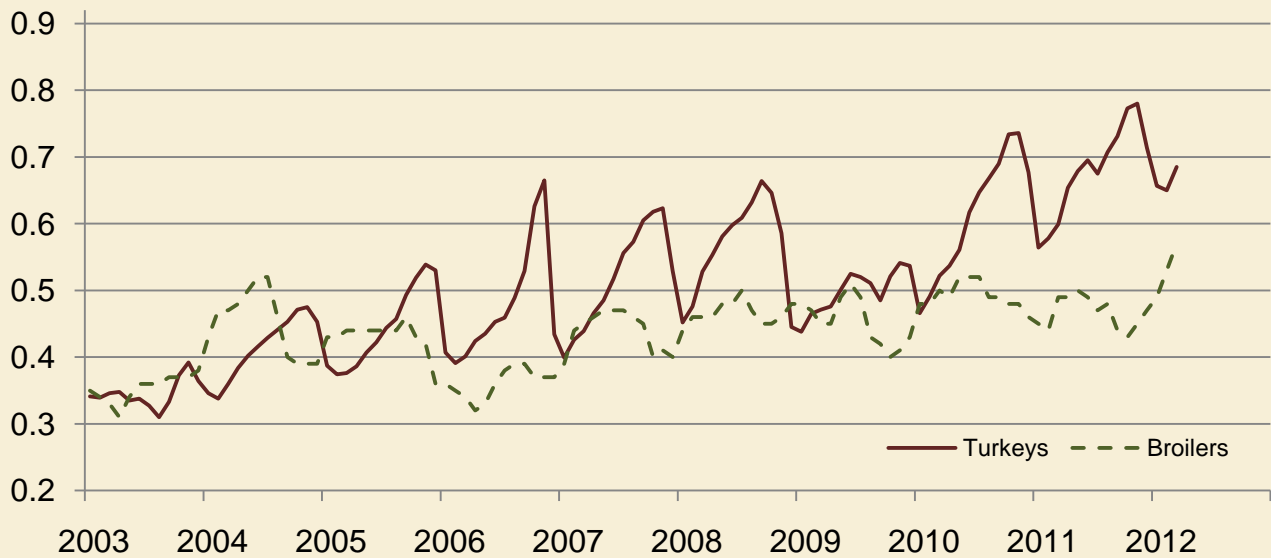
Prices Received for Hogs by Month – United States

Dollars per cwt



Prices Received for Poultry by Month – United States

Dollars per pound



Prices Received for All Wheat, Corn, and Soybeans by Month – United States: 2012 with Comparisons

[Current month prices are mid-month; prices for previous months and years are for the entire month. Blank data cells indicate estimation period has not yet begun]

| Month | All wheat | | | Corn | | | Soybeans | | |
|----------------|----------------------|----------------------|----------------------|----------------------|----------------------|----------------------|----------------------|----------------------|----------------------|
| | 2010 | 2011 | Preliminary 2012 | 2010 | 2011 | Preliminary 2012 | 2010 | 2011 | Preliminary 2012 |
| | (dollars per bushel) | (dollars per bushel) | (dollars per bushel) | (dollars per bushel) | (dollars per bushel) | (dollars per bushel) | (dollars per bushel) | (dollars per bushel) | (dollars per bushel) |
| January | 4.90 | 6.69 | 7.04 | 3.66 | 4.94 | 6.07 | 9.79 | 11.60 | 11.90 |
| February | 4.73 | 7.42 | 7.10 | 3.55 | 5.65 | 6.28 | 9.41 | 12.70 | 12.20 |
| March | 4.70 | 7.55 | 7.24 | 3.55 | 5.53 | 6.48 | 9.39 | 12.70 | 13.10 |
| April | 4.41 | 8.01 | | 3.41 | 6.36 | | 9.47 | 13.10 | |
| May | 4.34 | 8.16 | | 3.48 | 6.32 | | 9.41 | 13.20 | |
| June | 4.16 | 7.41 | | 3.41 | 6.38 | | 9.45 | 13.20 | |
| July | 4.49 | 7.10 | | 3.49 | 6.33 | | 9.79 | 13.20 | |
| August | 5.44 | 7.61 | | 3.65 | 6.88 | | 10.10 | 13.40 | |
| September ... | 5.79 | 7.55 | | 4.08 | 6.37 | | 9.98 | 12.20 | |
| October | 5.88 | 7.29 | | 4.32 | 5.71 | | 10.20 | 11.70 | |
| November | 6.10 | 7.26 | | 4.55 | 5.84 | | 11.10 | 11.70 | |
| December | 6.44 | 7.19 | | 4.82 | 5.86 | | 11.60 | 11.50 | |

Prices Received for Beef Cattle and All Hogs by Month – United States: 2012 with Comparisons

[Current month prices are mid-month; prices for previous months and years are for the entire month. Blank data cells indicate estimation period has not yet begun]

| Month | Beef cattle ¹ | | | All hogs ² | | |
|-----------------|--------------------------|-------------------|-------------------|-----------------------|-------------------|-------------------|
| | 2010 | 2011 | Preliminary 2012 | 2010 | 2011 | Preliminary 2012 |
| | (dollars per cwt) | (dollars per cwt) | (dollars per cwt) | (dollars per cwt) | (dollars per cwt) | (dollars per cwt) |
| January | 82.30 | 107.00 | 125.00 | 48.40 | 56.00 | 63.50 |
| February | 85.70 | 108.00 | 127.00 | 48.90 | 61.40 | 65.50 |
| March | 90.40 | 115.00 | 130.00 | 52.10 | 62.90 | 65.70 |
| April | 95.60 | 119.00 | | 56.50 | 67.80 | |
| May | 94.70 | 112.00 | | 62.20 | 68.60 | |
| June | 90.40 | 107.00 | | 58.20 | 69.70 | |
| July | 91.70 | 111.00 | | 58.50 | 71.70 | |
| August | 93.50 | 111.00 | | 61.30 | 75.80 | |
| September | 94.10 | 112.00 | | 61.00 | 67.10 | |
| October | 93.10 | 117.00 | | 53.30 | 68.70 | |
| November | 94.00 | 120.00 | | 47.80 | 64.40 | |
| December | 98.10 | 120.00 | | 52.40 | 63.50 | |

¹ Cows and steers & heifers.

² Barrows & gilts and sows.

Prices Received for All Wheat – States and United States: March 2012 with Comparisons

| State | March 2011 | February 2012 | Preliminary March 2012 |
|----------------------|----------------------|----------------------|------------------------|
| | (dollars per bushel) | (dollars per bushel) | (dollars per bushel) |
| Arizona | (S) | (D) | (S) |
| Arkansas | (D) | (D) | 6.70 |
| California | 6.48 | (D) | (D) |
| Colorado | 6.91 | 6.44 | 6.30 |
| Idaho | 6.94 | 6.99 | 7.29 |
| Illinois | 7.01 | 6.79 | 6.70 |
| Indiana | 7.58 | 7.19 | 6.40 |
| Kansas | 7.84 | 6.82 | 6.65 |
| Michigan | 6.81 | 6.78 | 6.70 |
| Minnesota | 6.83 | 8.09 | 8.18 |
| Missouri | 6.36 | 6.50 | 6.50 |
| Montana | 7.22 | 7.37 | 7.67 |
| Nebraska | 6.38 | 6.43 | 6.30 |
| North Carolina | 7.83 | 8.00 | 7.00 |
| North Dakota | 8.35 | 7.94 | 8.15 |
| Ohio | 6.51 | 6.88 | 6.87 |
| Oklahoma | 7.25 | 6.88 | 6.71 |
| Oregon | 7.21 | 6.47 | 6.85 |
| South Dakota | 8.70 | 7.25 | 7.18 |
| Texas | 7.99 | 7.58 | 6.67 |
| Washington | 7.31 | 6.65 | 6.85 |
| United States | 7.55 | 7.10 | 7.24 |

(D) Withheld to avoid disclosing data for individual operations.

(S) Insufficient number of reports to establish an estimate.

Prices Received for Winter Wheat – States and United States: March 2012 with Comparisons

| State | March 2011 | February 2012 | Preliminary March 2012 |
|----------------------|----------------------|----------------------|------------------------|
| | (dollars per bushel) | (dollars per bushel) | (dollars per bushel) |
| Arkansas | (D) | (D) | 6.70 |
| California | 6.48 | (D) | (D) |
| Colorado | 6.91 | 6.44 | 6.30 |
| Idaho | 6.56 | 6.60 | 6.90 |
| Illinois | 7.01 | 6.79 | 6.70 |
| Indiana | 7.58 | 7.19 | 6.40 |
| Kansas | 7.84 | 6.82 | 6.65 |
| Michigan | 6.81 | 6.78 | 6.70 |
| Minnesota | 6.36 | (D) | 6.40 |
| Missouri | 6.36 | 6.50 | 6.50 |
| Montana | 6.69 | 6.48 | 6.80 |
| Nebraska | 6.38 | 6.43 | 6.30 |
| North Carolina | 7.83 | 8.00 | 7.00 |
| North Dakota | 6.35 | 5.92 | 6.10 |
| Ohio | 6.51 | 6.88 | 6.87 |
| Oklahoma | 7.25 | 6.88 | 6.71 |
| Oregon | 7.07 | 6.42 | 6.80 |
| South Dakota | 7.23 | 6.69 | 6.70 |
| Texas | 7.99 | 7.58 | 6.67 |
| Washington | 6.64 | 6.42 | 6.60 |
| United States | 7.02 | 6.67 | 6.65 |

(D) Withheld to avoid disclosing data for individual operations.

Prices Received for Durum Wheat – States and United States: March 2012 with Comparisons

| State | March 2011 | February 2012 | Preliminary March 2012 |
|---------------------|----------------------|----------------------|---------------------------|
| | (dollars per bushel) | (dollars per bushel) | (dollars per bushel) |
| Arizona | (S) | (D) | (S) |
| California | (D) | (S) | (S) |
| Idaho | (D) | (D) | (D) |
| Montana | 7.67 | 10.20 | 10.20 |
| North Dakota | 8.14 | 8.31 | 8.80 |
| United States | 8.09 | 8.95 | 9.21 |

(D) Withheld to avoid disclosing data for individual operations.

(S) Insufficient number of reports to establish an estimate.

Prices Received for Spring Wheat – States and United States: March 2012 with Comparisons

| State | March 2011 | February 2012 | Preliminary March 2012 |
|---------------------|----------------------|----------------------|---------------------------|
| | (dollars per bushel) | (dollars per bushel) | (dollars per bushel) |
| Colorado | (D) | (D) | (S) |
| Idaho | 7.51 | 7.64 | 7.70 |
| Minnesota | 6.84 | 8.10 | 8.20 |
| Montana | 7.71 | 8.17 | 8.46 |
| North Dakota | 8.48 | 8.12 | 8.15 |
| Oregon | 8.22 | 6.82 | 7.10 |
| South Dakota | 9.26 | 8.21 | 8.00 |
| Washington | 9.23 | 7.68 | 7.79 |
| United States | 8.07 | 8.01 | 8.14 |

(D) Withheld to avoid disclosing data for individual operations.

(S) Insufficient number of reports to establish an estimate.

Prices Received for All Barley – States and United States: March 2012 with Comparisons

| State | March 2011 | February 2012 | Preliminary March 2012 |
|---------------------|----------------------|----------------------|---------------------------|
| | (dollars per bushel) | (dollars per bushel) | (dollars per bushel) |
| California | (D) | (S) | (S) |
| Colorado | 2.93 | 5.27 | (D) |
| Idaho | 4.16 | 5.82 | 5.81 |
| Minnesota | (D) | (D) | (D) |
| Montana | 4.28 | 5.00 | 4.81 |
| North Dakota | 4.35 | 5.56 | 5.81 |
| Oregon | 4.29 | 4.29 | 4.50 |
| Utah | 5.00 | 5.19 | (D) |
| Washington | 4.51 | 4.23 | 4.53 |
| Wyoming | (D) | (D) | (D) |
| United States | 4.29 | 5.39 | 5.37 |

(D) Withheld to avoid disclosing data for individual operations.

(S) Insufficient number of reports to establish an estimate.

Prices Received for Malting Barley – States: March 2012 with Comparisons

| State | March 2011 | February 2012 | Preliminary March 2012 |
|--------------------|----------------------|----------------------|---------------------------|
| | (dollars per bushel) | (dollars per bushel) | (dollars per bushel) |
| Idaho | 4.08 | 5.90 | (D) |
| Minnesota | (D) | (D) | (D) |
| Montana | 4.29 | 5.02 | (D) |
| North Dakota | 4.37 | 5.63 | 5.90 |
| Wyoming | (D) | (D) | (D) |

(D) Withheld to avoid disclosing data for individual operations.

Prices Received for Feed Barley – States: March 2012 with Comparisons

| State | March 2011 | February 2012 | Preliminary March 2012 |
|--------------------|----------------------|----------------------|---------------------------|
| | (dollars per bushel) | (dollars per bushel) | (dollars per bushel) |
| Idaho | 4.64 | 4.89 | 4.85 |
| Minnesota | 4.20 | 4.93 | 4.90 |
| Montana | 4.20 | 4.69 | (D) |
| North Dakota | 4.19 | 4.85 | 5.00 |
| Wyoming | (S) | (S) | (S) |

(D) Withheld to avoid disclosing data for individual operations.

(S) Insufficient number of reports to establish an estimate.

Prices Received for Corn – States and United States: March 2012 with Comparisons

| State | March 2011 | February 2012 | Preliminary March 2012 |
|----------------------|----------------------|----------------------|---------------------------|
| | (dollars per bushel) | (dollars per bushel) | (dollars per bushel) |
| Colorado | 5.21 | 6.30 | 6.47 |
| Illinois | 5.73 | 6.37 | 6.60 |
| Indiana | 5.80 | 6.45 | 6.73 |
| Iowa | 5.32 | 6.21 | 6.40 |
| Kansas | 6.08 | 6.35 | 6.55 |
| Kentucky | 5.76 | 6.51 | 6.70 |
| Michigan | 5.84 | 6.14 | 6.35 |
| Minnesota | 5.25 | 6.05 | 6.30 |
| Missouri | 5.60 | 6.46 | 6.70 |
| Nebraska | 5.30 | 6.22 | 6.40 |
| North Carolina | 6.65 | 7.07 | 7.15 |
| North Dakota | 5.51 | 5.92 | 6.20 |
| Ohio | 5.95 | 6.43 | 6.65 |
| Pennsylvania | 6.88 | 7.07 | 7.10 |
| South Dakota | 5.44 | 6.06 | 6.29 |
| Tennessee | 6.08 | 6.75 | 7.00 |
| Texas | 5.45 | 7.03 | 7.24 |
| Wisconsin | 5.60 | 6.08 | 6.23 |
| United States | 5.53 | 6.28 | 6.48 |

Prices Received for Soybeans – States and United States: March 2012 with Comparisons

| State | March 2011 | February 2012 | Preliminary March 2012 |
|----------------------|----------------------|----------------------|---------------------------|
| | (dollars per bushel) | (dollars per bushel) | (dollars per bushel) |
| Arkansas | 12.50 | 12.40 | 13.40 |
| Illinois | 13.10 | 12.40 | 13.40 |
| Indiana | 12.80 | 12.50 | 13.30 |
| Iowa | 12.40 | 12.10 | 13.10 |
| Kansas | 12.90 | 12.00 | 12.80 |
| Kentucky | 13.00 | 12.50 | 13.40 |
| Louisiana | 13.30 | 12.60 | (D) |
| Michigan | 12.20 | 12.10 | 13.10 |
| Minnesota | 12.50 | 12.00 | 13.00 |
| Mississippi | 13.20 | 12.30 | 13.30 |
| Missouri | 12.60 | 12.40 | 13.20 |
| Nebraska | 12.60 | 11.90 | 12.70 |
| North Carolina | 13.20 | 12.40 | 13.20 |
| North Dakota | 12.50 | 11.70 | 12.70 |
| Ohio | 12.90 | 12.60 | 13.50 |
| South Dakota | 12.50 | 12.00 | 12.90 |
| Tennessee | 12.80 | 12.40 | 13.10 |
| Wisconsin | 12.00 | 12.20 | 12.90 |
| United States | 12.70 | 12.20 | 13.10 |

(D) Withheld to avoid disclosing data for individual operations.

Prices Received for Oats – States and United States: March 2012 with Comparisons

| State | March 2011 | February 2012 | Preliminary March 2012 |
|---------------------|----------------------|----------------------|---------------------------|
| | (dollars per bushel) | (dollars per bushel) | (dollars per bushel) |
| Illinois | (S) | (D) | (S) |
| Iowa | 3.17 | 3.61 | 3.70 |
| Michigan | 3.34 | (D) | (D) |
| Minnesota | 3.09 | 3.40 | 3.40 |
| Montana | 2.52 | (D) | (S) |
| Nebraska | 3.72 | 3.99 | 4.05 |
| New York | 3.63 | (D) | (D) |
| North Dakota | 3.19 | 3.15 | (D) |
| Oregon | (S) | (S) | (S) |
| Pennsylvania | 3.98 | 4.01 | 4.03 |
| South Dakota | 3.36 | 3.65 | 3.72 |
| Texas | (S) | (S) | (S) |
| Wisconsin | 3.19 | 3.60 | 3.40 |
| United States | 3.28 | 3.46 | 3.58 |

(D) Withheld to avoid disclosing data for individual operations.

(S) Insufficient number of reports to establish an estimate.

Prices Received for Sorghum Grain – States and United States: March 2012 with Comparisons

| State | March 2011 | February 2012 | Preliminary March 2012 |
|---------------------|-------------------|-------------------|---------------------------|
| | (dollars per cwt) | (dollars per cwt) | (dollars per cwt) |
| Arkansas | (S) | (D) | (D) |
| Illinois | 10.50 | (D) | (S) |
| Kansas | 10.80 | 10.80 | 11.20 |
| Louisiana | (S) | (D) | (S) |
| Missouri | (D) | 10.70 | 11.20 |
| Nebraska | 10.30 | 10.60 | 10.70 |
| Oklahoma | 10.90 | 10.90 | 11.40 |
| Texas | 9.75 | 11.20 | 12.10 |
| United States | 10.60 | 10.80 | 11.30 |

(D) Withheld to avoid disclosing data for individual operations.

(S) Insufficient number of reports to establish an estimate.

Prices Received for Dry Beans – States and United States: March 2012 with Comparisons

| State | March 2011 | February 2012 | Preliminary March 2012 |
|---------------------|-------------------|-------------------|---------------------------|
| | (dollars per cwt) | (dollars per cwt) | (dollars per cwt) |
| California | 46.90 | 50.30 | (D) |
| Colorado | 29.40 | 50.30 | 52.00 |
| Idaho | 27.50 | 45.10 | 48.00 |
| Michigan | 36.70 | 53.40 | (D) |
| Minnesota | 34.70 | 46.40 | 46.40 |
| Nebraska | 31.90 | 46.90 | 47.30 |
| North Dakota | 26.10 | 45.50 | 45.00 |
| United States | 29.90 | 46.70 | 49.00 |

(D) Withheld to avoid disclosing data for individual operations.

Prices Received for Peanuts (In-Shell) – States and United States: March 2012 with Comparisons

| State | March 2011 | February 2012 | Preliminary March 2012 |
|----------------------|---------------------|---------------------|---------------------------|
| | (dollars per pound) | (dollars per pound) | (dollars per pound) |
| Alabama | 0.218 | 0.309 | 0.359 |
| Florida | 0.218 | 0.326 | 0.359 |
| Georgia | 0.223 | 0.326 | 0.343 |
| Mississippi | 0.221 | 0.384 | 0.461 |
| New Mexico | (D) | (S) | (S) |
| North Carolina | 0.256 | 0.331 | 0.309 |
| Oklahoma | 0.242 | (D) | 0.327 |
| South Carolina | 0.254 | 0.306 | 0.336 |
| Texas | 0.272 | 0.421 | 0.382 |
| Virginia | 0.255 | 0.336 | 0.321 |
| United States | 0.234 | 0.329 | 0.342 |

(D) Withheld to avoid disclosing data for individual operations.

(S) Insufficient number of reports to establish an estimate.

Prices Received for Sunflower – States and United States: March 2012 with Comparisons

| State | March 2011 | February 2012 | Preliminary March 2012 |
|---------------------|-------------------|-------------------|---------------------------|
| | (dollars per cwt) | (dollars per cwt) | (dollars per cwt) |
| Colorado | (D) | 28.10 | (D) |
| Kansas | (D) | 31.00 | 29.70 |
| Minnesota | 28.20 | 34.80 | (D) |
| North Dakota | 28.60 | 32.30 | 28.60 |
| South Dakota | 26.90 | 26.60 | 26.10 |
| United States | 28.30 | 29.60 | 28.20 |

(D) Withheld to avoid disclosing data for individual operations.

Prices Received for Canola – States and United States: March 2012 with Comparisons

| State | March 2011 | February 2012 | Preliminary March 2012 |
|---------------------|-------------------|-------------------|---------------------------|
| | (dollars per cwt) | (dollars per cwt) | (dollars per cwt) |
| Minnesota | 25.20 | 25.90 | (S) |
| North Dakota | 23.30 | 24.80 | 26.00 |
| United States | 23.40 | 24.80 | 26.00 |

(S) Insufficient number of reports to establish an estimate.

Prices Received for Flaxseed – States and United States: March 2012 with Comparisons

| State | March 2011 | February 2012 | Preliminary March 2012 |
|---------------------|----------------------|----------------------|---------------------------|
| | (dollars per bushel) | (dollars per bushel) | (dollars per bushel) |
| North Dakota | 13.70 | 13.30 | 13.70 |
| United States | 13.70 | 13.30 | 13.70 |

Prices Received for Upland Cotton and Cottonseed – States and United States: March 2012 with Comparisons

[Cottonseed marketing year August - February]

| State | Cotton, Upland | | | Cottonseed | | |
|----------------------|---------------------|---------------------|------------------------|-------------------|-------------------|------------------------|
| | March 2011 | February 2012 | Preliminary March 2012 | March 2011 | February 2012 | Preliminary March 2012 |
| | (dollars per pound) | (dollars per pound) | (dollars per pound) | (dollars per ton) | (dollars per ton) | (dollars per ton) |
| Alabama | (D) | 0.944 | 0.995 | (NA) | 208.00 | (NA) |
| Arizona | (D) | 0.894 | (D) | (NA) | 299.00 | (NA) |
| Arkansas | (D) | 0.985 | 0.930 | (NA) | (S) | (NA) |
| California | 1.850 | (D) | (D) | (NA) | (D) | (NA) |
| Georgia | 0.835 | 0.927 | 0.986 | (NA) | 208.00 | (NA) |
| Louisiana | (D) | 0.992 | (D) | (NA) | (S) | (NA) |
| Mississippi | (D) | 0.985 | 0.981 | (NA) | (S) | (NA) |
| North Carolina | 0.809 | 0.906 | 0.996 | (NA) | (S) | (NA) |
| Tennessee | 0.851 | 0.964 | (D) | (NA) | (S) | (NA) |
| Texas | 0.849 | 0.833 | 0.824 | (NA) | 311.00 | (NA) |
| United States | 0.844 | 0.924 | 0.936 | (NA) | 275.00 | (NA) |

(D) Withheld to avoid disclosing data for individual operations.

(NA) Not available.

(S) Insufficient number of reports to establish an estimate.

Prices Received and Farm Marketings for Upland Cotton and Rice – United States: March 2012 with Comparisons

| Item | March 2011 | February 2012 | Preliminary March 2012 |
|---|------------|---------------|------------------------|
| Cotton, Upland | | | |
| Average price dollars/pound | 0.844 | 0.924 | 0.936 |
| Marketings ¹ 1,000 bales | 416 | 858 | (NA) |
| Rice, all | | | |
| Average price dollars/cwt | 13.00 | 13.80 | 14.10 |
| Marketings ² 1,000 cwt | 15,844 | 13,187 | (NA) |
| Rice, long | | | |
| Average price dollars/cwt | 11.60 | 13.20 | 13.20 |
| Marketings ² 1,000 cwt | 12,537 | 9,917 | (NA) |
| Rice, medium and short | | | |
| Average price dollars/cwt | 18.50 | 15.30 | 16.00 |
| Marketings ² 1,000 cwt | 3,307 | 3,270 | (NA) |

(NA) Not available.

¹ Marketings based on a survey of cotton buyers in the major producing States - Alabama, Arizona, Arkansas, California, Georgia, Louisiana, Mississippi, North Carolina, Tennessee, and Texas.

² Purchases by private firms and rice (rough equivalent) shipped by cooperatives.

Prices Received for Hay by Type – States and United States: March 2012 with Comparisons

| State | All hay | | | Alfalfa hay | | | Other hay | | |
|---------------------|-------------------|-------------------|------------------------|-------------------|-------------------|------------------------|-------------------|-------------------|------------------------|
| | March 2011 | February 2012 | Preliminary March 2012 | March 2011 | February 2012 | Preliminary March 2012 | March 2011 | February 2012 | Preliminary March 2012 |
| | (dollars per ton) | (dollars per ton) | (dollars per ton) | (dollars per ton) | (dollars per ton) | (dollars per ton) | (dollars per ton) | (dollars per ton) | (dollars per ton) |
| Arizona | 176.00 | 252.00 | 255.00 | 180.00 | 255.00 | 260.00 | 125.00 | 185.00 | 195.00 |
| California | 212.00 | 244.00 | 242.00 | 240.00 | 250.00 | 245.00 | 116.00 | 215.00 | 226.00 |
| Colorado | 136.00 | 235.00 | 247.00 | 140.00 | 245.00 | 255.00 | 115.00 | 165.00 | 170.00 |
| Idaho | 155.00 | 206.00 | 207.00 | 157.00 | 210.00 | 210.00 | 120.00 | 145.00 | 145.00 |
| Illinois | 138.00 | 140.00 | 172.00 | 145.00 | 150.00 | 180.00 | 90.00 | 110.00 | 140.00 |
| Iowa | 110.00 | 139.00 | 140.00 | 118.00 | 152.00 | 149.00 | 79.00 | 95.00 | 94.00 |
| Kansas | 98.00 | 195.00 | 184.00 | 115.00 | 225.00 | 220.00 | 75.00 | 105.00 | 100.00 |
| Kentucky | 94.00 | 113.00 | 114.00 | 140.00 | 190.00 | 185.00 | 75.00 | 90.00 | 85.00 |
| Michigan | 97.00 | 106.00 | 100.00 | 105.00 | 115.00 | 110.00 | 80.00 | 85.00 | 80.00 |
| Minnesota | 106.00 | 117.00 | 126.00 | 110.00 | 135.00 | 145.00 | 80.00 | 90.00 | 90.00 |
| Missouri | 76.00 | 93.00 | 124.00 | 135.00 | 250.00 | 250.00 | 60.00 | 75.00 | 100.00 |
| Montana | 76.00 | 105.00 | 104.00 | 77.00 | 107.00 | 105.00 | 74.00 | 93.00 | 97.00 |
| Nebraska | 76.00 | 128.00 | 129.00 | 80.00 | 139.00 | 140.00 | 65.00 | 95.00 | 99.00 |
| Nevada | 150.00 | 230.00 | 223.00 | 151.00 | 233.00 | 226.00 | 129.00 | 165.00 | 175.00 |
| New Mexico | 174.00 | 294.00 | 294.00 | 180.00 | 301.00 | 301.00 | 147.00 | 224.00 | 224.00 |
| New York | 112.00 | 102.00 | 108.00 | 140.00 | 134.00 | 160.00 | 110.00 | 100.00 | 105.00 |
| North Dakota | 63.00 | 73.00 | 68.00 | 66.00 | 79.00 | 78.00 | 47.00 | 57.00 | 56.00 |
| Ohio | 116.00 | 148.00 | 143.00 | 162.00 | 209.00 | 192.00 | 78.00 | 94.00 | 111.00 |
| Oklahoma | 84.00 | 190.00 | 193.00 | 136.00 | 241.00 | 249.00 | 77.00 | 135.00 | 143.00 |
| Oregon | 169.00 | 220.00 | 230.00 | 168.00 | 237.00 | 246.00 | 170.00 | 196.00 | 208.00 |
| Pennsylvania | 126.00 | 191.00 | 191.00 | 159.00 | 224.00 | 228.00 | 118.00 | 170.00 | 174.00 |
| South Dakota | 80.00 | 123.00 | 122.00 | 83.00 | 132.00 | 129.00 | 70.00 | 89.00 | 85.00 |
| Texas | 123.00 | 175.00 | 181.00 | 190.00 | 277.00 | 276.00 | 112.00 | 155.00 | 162.00 |
| Utah | 120.00 | 191.00 | 171.00 | 120.00 | 193.00 | 175.00 | 106.00 | 155.00 | 142.00 |
| Washington | 149.00 | 238.00 | 236.00 | 140.00 | 250.00 | 245.00 | 170.00 | 210.00 | 215.00 |
| Wisconsin | 101.00 | 113.00 | 113.00 | 105.00 | 125.00 | 125.00 | 75.00 | 90.00 | 90.00 |
| Wyoming | 97.00 | 144.00 | 151.00 | 98.00 | 150.00 | 155.00 | 90.00 | 125.00 | 130.00 |
| United States | 126.00 | 176.00 | 181.00 | 142.00 | 198.00 | 201.00 | 99.50 | 130.00 | 139.00 |

Prices Received for Apples – States and United States: March 2012 with Comparisons

[Equivalent packinghouse-door returns for California, Michigan, New York, and Washington. Prices at point of first sale for other States]

| State | Apples, fresh use | | |
|---------------------|---------------------|---------------------|------------------------|
| | March 2011 | February 2012 | Preliminary March 2012 |
| | (dollars per pound) | (dollars per pound) | (dollars per pound) |
| California | (NA) | (NA) | (NA) |
| Michigan | 0.300 | 0.325 | 0.325 |
| New York | 0.257 | 0.301 | 0.302 |
| Ohio | 0.530 | 0.430 | 0.490 |
| Pennsylvania | (NA) | (NA) | 0.471 |
| Virginia | 0.260 | 0.390 | 0.390 |
| Washington | 0.284 | 0.356 | 0.341 |
| United States | 0.282 | 0.354 | 0.364 |

(NA) Not available.

Prices Received for Citrus Fruits by Utilization – States and United States: March 2011

[Net pounds per box: grapefruit in California-80, Florida-85, Texas-80; lemons-80; oranges in California-80, Florida-90, Texas-85; tangelos-90; tangerines and mandarins in Arizona and California-80, Florida-95]

| Commodity, State, and type | FOB packed fresh | Equivalent returns | | | | | |
|----------------------------------|------------------------|----------------------|----------------------|----------------------|----------------------|----------------------|----------------------|
| | | Packinghouse-door | | | On-tree | | |
| | | All | Fresh | Process | All | Fresh | Process |
| | (dollars per box) | (dollars per box) | (dollars per box) | (dollars per box) | (dollars per box) | (dollars per box) | (dollars per box) |
| Grapefruit | | | | | | | |
| California ¹ | 17.00 | 10.60 | 10.60 | (D) | 8.50 | 8.50 | (D) |
| Florida | 21.70 | 8.17 | 11.87 | 6.38 | 5.61 | 9.68 | 3.64 |
| White | 23.50 | 7.48 | 13.60 | 5.75 | 5.02 | 11.45 | 3.20 |
| Colored | 21.20 | 8.50 | 11.40 | 6.75 | 5.90 | 9.20 | 3.90 |
| Texas | 24.00 | 7.38 | 13.70 | 1.60 | 5.91 | 12.15 | 0.20 |
| United States | 21.40 | 8.23 | 11.78 | 6.38 | 5.69 | 9.60 | 3.64 |
| Lemons | | | | | | | |
| Arizona | (D) | (D) | (D) | (D) | (D) | (D) | (D) |
| California | 29.70 | 11.94 | 18.80 | (D) | 6.07 | 12.93 | (D) |
| United States | 29.60 | 11.57 | 18.74 | (D) | 5.70 | 12.87 | (D) |
| Oranges | | | | | | | |
| California | 19.90 | 8.79 | 11.28 | (D) | 6.34 | 8.87 | (D) |
| Navel and miscellaneous .. | 19.40 | 8.21 | 10.76 | (D) | 5.76 | 8.35 | (D) |
| Valencia | (D) | (D) | (D) | (D) | (D) | (D) | (D) |
| Florida | 23.20 | 9.68 | 13.19 | 9.52 | 7.09 | 10.48 | 6.94 |
| Early and mids | 21.00 | 9.78 | 11.00 | 9.70 | 7.27 | 8.25 | 7.20 |
| Valencia | 23.70 | 9.67 | 13.70 | 9.50 | 7.06 | 11.00 | 6.90 |
| United States | 20.10 | 9.30 | 11.41 | 8.13 | 6.77 | 8.98 | 5.55 |
| Tangerines and mandarins | | | | | | | |
| Arizona | (S) | (S) | (S) | (S) | (S) | (S) | (S) |
| California | (D) | (D) | (D) | (D) | (D) | (D) | (D) |
| Florida | 28.20 | 13.53 | 15.95 | 8.80 | 10.03 | 12.45 | 5.30 |
| United States | 27.60 | 16.18 | 18.72 | 3.76 | 13.23 | 15.95 | -0.05 |

(D) Withheld to avoid disclosing data for individual operations.

(S) Insufficient number of reports to establish an estimate.

¹ Some processed sales included in fresh sales.

Prices Received for Citrus Fruits by Utilization – States and United States: February 2012

[Net pounds per box: grapefruit in California-80, Florida-85, Texas-80; lemons-80; oranges in California-80, Florida-90, Texas-85; tangelos-90; tangerines and mandarins in Arizona and California-80, Florida-95]

| Commodity, State, and type | FOB packed fresh | Equivalent returns | | | | | |
|----------------------------------|------------------------|----------------------|----------------------|----------------------|----------------------|----------------------|----------------------|
| | | Packinghouse-door | | | On-tree | | |
| | | All | Fresh | Process | All | Fresh | Process |
| | (dollars per box) | (dollars per box) | (dollars per box) | (dollars per box) | (dollars per box) | (dollars per box) | (dollars per box) |
| Grapefruit | | | | | | | |
| California ¹ | 17.20 | 10.67 | 10.67 | (D) | 8.53 | 8.53 | (D) |
| Florida | 18.60 | 8.40 | 8.94 | 8.10 | 5.86 | 6.70 | 5.39 |
| White | 18.40 | 7.71 | 8.70 | 7.45 | 5.20 | 6.50 | 4.85 |
| Colored | 18.60 | 8.74 | 9.00 | 8.55 | 6.18 | 6.75 | 5.75 |
| Texas | 23.80 | 7.66 | 13.50 | 1.60 | 6.19 | 11.95 | 0.20 |
| United States | 19.60 | 8.33 | 9.96 | 7.27 | 5.96 | 7.87 | 4.72 |
| Lemons | | | | | | | |
| Arizona | (D) | (D) | (D) | (D) | (D) | (D) | (D) |
| California | 35.60 | 17.60 | 24.48 | (D) | 11.61 | 18.49 | (D) |
| United States | 35.50 | 17.53 | 24.40 | (D) | 11.54 | 18.41 | (D) |
| Oranges | | | | | | | |
| California | | | | | | | |
| Navel and miscellaneous .. | 21.60 | 10.27 | 12.79 | (D) | 7.77 | 10.33 | (D) |
| Florida | | | | | | | |
| Early and mids | 24.10 | 10.19 | 13.85 | 10.10 | 7.58 | 11.05 | 7.50 |
| United States | 21.80 | 10.21 | 12.85 | 9.25 | 7.64 | 10.37 | 6.65 |
| Tangelos | | | | | | | |
| Florida | 35.30 | 17.45 | 24.20 | 10.70 | 14.33 | 21.05 | 7.60 |
| Tangerines and mandarins | | | | | | | |
| Arizona | (D) | (D) | (D) | (D) | (D) | (D) | (D) |
| California | (D) | (D) | (D) | (D) | (D) | (D) | (D) |
| Florida | 28.30 | 13.62 | 16.00 | 10.40 | 9.75 | 12.30 | 6.30 |
| United States | 33.50 | 21.59 | 24.40 | 8.00 | 18.50 | 21.52 | 3.89 |

(D) Withheld to avoid disclosing data for individual operations.

¹ Some processed sales included in fresh sales.

Prices Received for Citrus Fruits by Utilization – States and United States: March 2012

[Net pounds per box: grapefruit in California-80, Florida-85, Texas-80; lemons-80; oranges in California-80, Florida-90, Texas-85; tangelos-90; tangerines and mandarins in Arizona and California-80, Florida-95]

| Commodity, State, and type | FOB packed fresh | Equivalent returns | | | | | |
|----------------------------------|------------------------|----------------------|----------------------|----------------------|----------------------|----------------------|----------------------|
| | | Packinghouse-door | | | On-tree | | |
| | | All | Fresh | Process | All | Fresh | Process |
| | (dollars per box) | (dollars per box) | (dollars per box) | (dollars per box) | (dollars per box) | (dollars per box) | (dollars per box) |
| Grapefruit | | | | | | | |
| California ¹ | 20.30 | 13.77 | 13.77 | (D) | 11.63 | 11.63 | (D) |
| Florida | 20.00 | 8.66 | 10.36 | 8.03 | 6.06 | 8.12 | 5.30 |
| White | 19.80 | 7.91 | 10.10 | 7.65 | 5.36 | 7.90 | 5.05 |
| Colored | 20.00 | 8.98 | 10.40 | 8.25 | 6.37 | 8.15 | 5.45 |
| Texas | 24.20 | 8.25 | 13.90 | 1.60 | 6.77 | 12.35 | 0.20 |
| United States | 21.10 | 8.70 | 11.47 | 7.35 | 6.28 | 9.41 | 4.77 |
| Lemons | | | | | | | |
| California | 35.00 | 18.99 | 23.88 | (D) | 13.00 | 17.89 | (D) |
| United States | 35.00 | 18.99 | 23.88 | (D) | 13.00 | 17.89 | (D) |
| Oranges | | | | | | | |
| California | 21.30 | 10.62 | 12.52 | (D) | 8.13 | 10.06 | (D) |
| Navel and miscellaneous .. | 21.40 | 10.85 | 12.59 | (D) | 8.36 | 10.13 | (D) |
| Valencia | (D) | (D) | (D) | (D) | (D) | (D) | (D) |
| Florida | 26.00 | 10.82 | 15.75 | 10.70 | 8.12 | 12.90 | 8.00 |
| Early and mids | (S) | (S) | (S) | (S) | (S) | (S) | (S) |
| Valencia | 26.00 | 10.82 | 15.75 | 10.70 | 8.12 | 12.90 | 8.00 |
| United States | 21.70 | 10.77 | 12.78 | 10.18 | 8.12 | 10.28 | 7.48 |
| Tangerines and mandarins | | | | | | | |
| California | (D) | (D) | (D) | (D) | (D) | (D) | (D) |
| Florida | 33.20 | 16.68 | 20.90 | 9.65 | 12.83 | 17.20 | 5.55 |
| United States | 38.30 | 26.51 | 29.36 | 6.90 | 23.52 | 26.54 | 2.77 |

(D) Withheld to avoid disclosing data for individual operations.

(S) Insufficient number of reports to establish an estimate.

¹ Some processed sales included in fresh sales.

Prices Received for Potatoes – States and United States: March 2012 with Comparisons

| State | March 2011 | February 2012 | Preliminary March 2012 |
|--------------------------|-------------------|-------------------|---------------------------|
| | (dollars per cwt) | (dollars per cwt) | (dollars per cwt) |
| California | | | |
| Spring | (S) | (S) | (S) |
| Fall | 10.60 | 8.50 | 8.60 |
| All ¹ | 10.60 | 8.50 | 8.60 |
| Colorado | | | |
| Fresh ¹ | 14.50 | 12.30 | (D) |
| All ¹ | 13.00 | 10.80 | 12.90 |
| Florida | 36.90 | (D) | (D) |
| Idaho | | | |
| Fresh ² | 10.20 | 7.70 | (D) |
| Processing | 7.70 | 8.30 | (D) |
| All ¹ | 9.35 | 8.15 | 8.80 |
| Maine | 11.40 | 11.00 | 11.30 |
| Michigan | 12.40 | 12.70 | 13.20 |
| Minnesota | 7.00 | 6.95 | (D) |
| New York | 14.80 | 15.00 | 15.20 |
| North Carolina | (S) | (S) | (S) |
| North Dakota | | | |
| Fresh ² | 13.00 | 13.40 | (D) |
| Processing | 8.50 | 7.80 | (D) |
| All ¹ | 9.90 | 9.85 | (D) |
| Oregon | 10.50 | 9.10 | 10.10 |
| Texas | (S) | (S) | (S) |
| Virginia | (S) | (S) | (S) |
| Washington | | | |
| Processing | 7.55 | 7.85 | (D) |
| All ¹ | 9.45 | 8.60 | 8.75 |
| Wisconsin | | | |
| Fresh ² | 12.80 | 11.50 | (D) |
| Processing | 12.30 | 9.00 | (D) |
| All ¹ | 12.50 | 10.10 | 10.00 |
| United States | | | |
| Fresh ² | 14.50 | 11.05 | (D) |
| Processing | 8.26 | 8.27 | (D) |
| All ¹ | 10.74 | 9.31 | 9.74 |

(D) Withheld to avoid disclosing data for individual operations.

(S) Insufficient number of reports to establish an estimate.

¹ Average price of potatoes sold for all uses, including table stock, processing, seed, and livestock feed.

² Fresh market prices only. Includes table stock prices.

Prices Received for All Milk – States and United States: March 2012 with Comparisons

[Before deduction for hauling. Includes quality, quantity, and other premiums. Excludes hauling subsidies]

| State | March 2011 | | February 2012 | | Preliminary March 2012 | |
|---------------------|-------------------|-----------|-------------------|-----------|---------------------------|-----------|
| | Price | Fat test | Price | Fat test | Price | Fat test |
| | (dollars per cwt) | (percent) | (dollars per cwt) | (percent) | (dollars per cwt) | (percent) |
| Arizona | 19.90 | 3.54 | 17.10 | 3.53 | 16.50 | 3.50 |
| California | 18.62 | 3.72 | 15.90 | 3.75 | 16.00 | 3.69 |
| Colorado | 20.30 | 3.60 | 18.10 | 3.59 | 17.50 | 3.56 |
| Florida | 23.30 | 3.66 | 21.70 | 3.64 | 21.00 | 3.59 |
| Idaho | 18.70 | 3.73 | 16.90 | 3.68 | 16.70 | 3.62 |
| Illinois | 21.00 | 3.78 | 18.10 | 3.78 | 17.40 | 3.74 |
| Indiana | 21.10 | 3.72 | 18.30 | 3.71 | 17.60 | 3.65 |
| Iowa | 20.70 | 3.73 | 18.30 | 3.80 | 17.60 | 3.75 |
| Kansas | 21.70 | 3.83 | 18.30 | 3.85 | 17.80 | 3.80 |
| Michigan | 21.10 | 3.70 | 18.50 | 3.71 | 17.90 | 3.68 |
| Minnesota | 20.90 | 3.77 | 18.60 | 3.86 | 18.40 | 3.83 |
| Missouri | 20.30 | 3.74 | 18.40 | 3.75 | 17.80 | 3.70 |
| New Mexico | 20.30 | 3.63 | 16.30 | 3.58 | 16.20 | 3.50 |
| New York | 21.30 | 3.79 | 19.00 | 3.79 | 18.10 | 3.76 |
| Ohio | 22.10 | 3.82 | 19.10 | 3.78 | 18.30 | 3.73 |
| Oregon | 22.20 | 3.83 | 18.70 | 3.84 | 18.20 | 3.82 |
| Pennsylvania | 22.00 | 3.80 | 19.60 | 3.78 | 18.70 | 3.75 |
| Texas | 21.60 | 3.82 | 17.80 | 3.81 | 17.50 | 3.71 |
| Utah | 20.10 | 3.75 | 16.80 | 3.75 | 16.20 | 3.70 |
| Vermont | 21.60 | 3.83 | 19.20 | 3.85 | 18.50 | 3.83 |
| Virginia | 22.60 | 3.76 | 20.10 | 3.80 | 19.30 | 3.69 |
| Washington | 21.10 | 3.83 | 18.00 | 3.84 | 17.50 | 3.82 |
| Wisconsin | 21.00 | 3.74 | 18.30 | 3.76 | 17.90 | 3.74 |
| United States | 20.40 | 3.74 | 17.70 | 3.75 | 17.40 | 3.70 |

Prices Received for Milk Cows – States and United States: January 2012 with Comparisons

[Animals sold for dairy herd replacement only. Prices estimated in January, April, July, and October]

| State | January 2011 (dollars per head) | October 2011 (dollars per head) | January 2012 (dollars per head) |
|---------------------|------------------------------------|------------------------------------|------------------------------------|
| Arizona | 1,380 | 1,550 | 1,500 |
| California | 1,200 | 1,400 | 1,400 |
| Colorado | 1,330 | 1,550 | 1,500 |
| Florida | 1,360 | 1,620 | 1,490 |
| Idaho | 1,200 | 1,450 | 1,450 |
| Illinois | 1,330 | 1,460 | 1,500 |
| Indiana | 1,350 | 1,550 | 1,450 |
| Iowa | 1,250 | 1,450 | 1,400 |
| Kansas | 1,200 | 1,400 | 1,400 |
| Michigan | 1,450 | 1,600 | 1,600 |
| Minnesota | 1,310 | 1,440 | 1,430 |
| Missouri | 1,130 | 1,270 | 1,200 |
| New Mexico | 1,320 | 1,480 | 1,380 |
| New York | 1,300 | 1,450 | 1,450 |
| Ohio | 1,360 | 1,510 | 1,500 |
| Oregon | 1,290 | 1,430 | 1,440 |
| Pennsylvania | 1,400 | 1,550 | 1,500 |
| Texas | 1,200 | 1,400 | 1,400 |
| Utah | 1,140 | 1,380 | 1,340 |
| Vermont | 1,450 | 1,650 | 1,550 |
| Virginia | 1,360 | 1,490 | 1,520 |
| Washington | 1,300 | 1,450 | 1,400 |
| Wisconsin | 1,430 | 1,560 | 1,550 |
| United States | 1,300 | 1,480 | 1,460 |

Commodity Parity Prices and Price as Percent of Parity Price – United States: March 2012 with Comparisons

[Parity prices are computed under the provisions of Title III, Subtitle a, Section 301 (a) of the Agricultural Adjustment Act of 1938 as amended by the Agricultural Acts of 1948, 1949, and 1956. See January *Agricultural Prices* for details on adjusted base price and parity price computations. Parity data not available for blank cells. Primary source of data for livestock and milk prices is United States Department of Agriculture's Agricultural Marketing Service]

| Commodity and unit | Adjusted base price | Parity price | | | Price as percent of parity | | |
|---|---------------------|--------------|---------------|------------|----------------------------|---------------|------------|
| | | March 2011 | February 2012 | March 2012 | March 2011 | February 2012 | March 2012 |
| | (dollars) | (dollars) | (dollars) | (dollars) | (percent) | (percent) | (percent) |
| Basic commodities | | | | | | | |
| All wheatbushel | 0.634 | 16.10 | 17.70 | 17.70 | 47 | 40 | 41 |
| Ricecwt | 1.46 | 43.20 | 40.70 | 40.80 | 30 | 34 | 35 |
| Cornbushel | 0.414 | 10.20 | 11.50 | 11.60 | 54 | 55 | 56 |
| Cotton | | | | | | | |
| Upland pound | 0.072 | 1.88 | 2.01 | 2.01 | 45 | 46 | 47 |
| American Pima pound | 0.141 | 3.42 | 3.93 | 3.94 | 52 | 42 | 42 |
| Peanuts pound | 0.026 | 0.715 | 0.725 | 0.726 | 33 | 45 | 47 |
| Designated nonbasic | | | | | | | |
| All milk, to plants ¹cwt | 1.80 | 48.20 | 50.20 | 50.30 | 45 | 36 | 37 |
| Honey, extracted ² pound | 0.139 | 3.55 | 3.88 | 3.88 | 45 | 41 | 41 |
| Wool and mohair | | | | | | | |
| Wool pound | 0.104 | 2.44 | 2.90 | 2.90 | 47 | 58 | 58 |
| Mohair pound | 0.333 | 8.58 | 9.29 | 9.30 | 41 | 44 | 44 |
| Other nonbasic | | | | | | | |
| Apples, fresh ³ pound | 0.033 | 0.874 | 0.920 | 0.922 | 32 | 38 | 39 |
| Barleybushel | 0.436 | 11.30 | 12.20 | 12.20 | 38 | 44 | 44 |
| Canolacwt | 1.820 | 46.10 | 50.80 | 50.80 | 51 | 49 | 51 |
| Cottonseed ton | 17.40 | 408.00 | 485.00 | 486.00 | 42 | 57 | 57 |
| Dry edible beanscwt | 3.01 | 77.30 | 83.90 | 84.10 | 39 | 56 | 58 |
| Flaxseedbushel | 1.100 | 27.00 | 30.70 | 30.70 | 51 | 43 | 45 |
| Oatsbushel | 0.263 | 6.62 | 7.34 | 7.35 | 50 | 47 | 49 |
| Potatoescwt | 0.855 | 22.10 | 23.80 | 23.90 | 49 | 39 | 41 |
| Sorghum graincwt | 0.729 | 17.90 | 20.30 | 20.40 | 59 | 53 | 55 |
| Soybeansbushel | 1.000 | 25.10 | 27.90 | 27.90 | 51 | 44 | 47 |
| Sunflower, allcwt | 2.06 | 50.60 | 57.50 | 57.50 | 56 | 51 | 49 |
| Citrus (equivalent on-tree) | | | | | | | |
| Grapefruitbox | 0.690 | 17.60 | 19.20 | 19.30 | 32 | 31 | 33 |
| Lemonsbox | 1.37 | 36.00 | 38.20 | 38.30 | 16 | 30 | 34 |
| Orangesbox | 0.698 | 18.20 | 19.50 | 19.50 | 37 | 39 | 42 |
| Tangerinesbox | 1.49 | 37.90 | 41.60 | 41.60 | 35 | 44 | 57 |
| Livestock and poultry | | | | | | | |
| Beef cattlecwt | 10.10 | 267.00 | 282.00 | 282.00 | 43 | 45 | 46 |
| Calvescwt | 13.90 | 373.00 | 388.00 | 388.00 | 40 | 47 | 48 |
| Hogscwt | 5.53 | 146.00 | 154.00 | 154.00 | 43 | 43 | 43 |
| Eggs ¹dozen | 0.091 | 2.41 | 2.54 | 2.54 | 31 | 33 | 35 |
| Turkeys, live pound | 0.057 | 1.480 | 1.590 | 1.590 | 40 | 41 | 43 |

¹ Seasonally adjusted price as percentage of parity price.

² Wholesale extracted. Adjusted base price derived from state annual averages prices weighted by production. For 1982 through 1985 the national averages are the support prices.

³ Equivalent packinghouse-door returns for California, New York (apples only), Oregon (except peaches), and Washington. Price at point of first sale for other states.

Commodity Parity Prices – United States: March 2012 with Comparisons

[Parity prices are computed under the provisions of Title III, Subtitle a, Section 301 (a) of the Agricultural Adjustment Act of 1938 as amended by the Agricultural Acts of 1948, 1949, and 1956. See January *Agricultural Prices* for details on adjusted base price and parity price computations]

| Commodity and unit | Adjusted base price | Parity price | | | |
|---|---------------------|--------------|---------------|------------|----------|
| | | March 2011 | February 2012 | March 2012 | |
| | (dollars) | (dollars) | (dollars) | (dollars) | |
| Field crops and miscellaneous | | | | | |
| Hops | pound | 0.306 | 8.13 | 8.53 | 8.55 |
| Mustard seed | cwt | 2.82 | 70.40 | 78.60 | 78.80 |
| Rapeseed | cwt | 2.23 | 56.70 | 62.20 | 62.30 |
| Rye | bushel | 0.525 | 13.00 | 14.60 | 14.70 |
| Safflower | cwt | 2.02 | 51.40 | 56.30 | 56.40 |
| Spearmint oil | pound | 1.50 | 38.10 | 41.80 | 41.90 |
| Sweet potatoes | cwt | 2.20 | 60.10 | 61.40 | 61.40 |
| Tobacco | | | | | |
| Flue-cured, 11-14 | pound | 0.196 | 5.51 | 5.47 | 5.47 |
| Fire-cured, 21-23 | pound | 0.283 | 7.76 | 7.89 | 7.90 |
| Burley, 31 | pound | 0.202 | 5.67 | 5.63 | 5.64 |
| Maryland, 32 | pound | 0.174 | 4.85 | 4.85 | 4.86 |
| Dark air-cured, 35-37 | pound | 0.256 | 6.91 | 7.14 | 7.15 |
| Pennsylvania seedleaf, 41 | pound | 0.182 | 5.06 | 5.08 | 5.08 |
| Cigar binder, 51 | pound | 0.640 | 17.90 | 17.80 | 17.90 |
| Noncitrus fruit | | | | | |
| Apples, processing ^{1 9} | ton | 16.10 | 426.00 | 449.00 | 450.00 |
| Apricots | | | | | |
| Fresh ^{2 9} | ton | 114.00 | 3,020.00 | 3,180.00 | 3,180.00 |
| Dried (California) ⁹ | ton | 262.00 | 6,940.00 | 7,310.00 | 7,320.00 |
| Avocados ^{2 9} | ton | 198.00 | 5,240.00 | 5,520.00 | 5,530.00 |
| Cherries | | | | | |
| Sweet ⁹ | ton | 210.00 | 5,560.00 | 5,860.00 | 5,870.00 |
| Tart ⁹ | pound | 0.034 | 0.900 | 0.948 | 0.950 |
| Cranberry ^{3 9} | barrel | 4.89 | 129.00 | 136.00 | 137.00 |
| Dates (California) ^{2 9} | ton | 183.00 | 4,850.00 | 5,100.00 | 5,110.00 |
| Grapes | | | | | |
| Raisin variety ⁹ | ton | 117.00 | 3,100.00 | 3,260.00 | 3,270.00 |
| Other dried ⁹ | ton | 65.40 | 1,730.00 | 1,820.00 | 1,830.00 |
| Kiwifruit ⁹ | ton | 94.40 | 2,500.00 | 2,630.00 | 2,640.00 |
| Nectarines, fresh (California) ^{2 9} | ton | 55.30 | 1,460.00 | 1,540.00 | 1,540.00 |
| Olives, canning (California) ^{3 9} | ton | 87.40 | 2,310.00 | 2,440.00 | 2,440.00 |

See footnote(s) at end of table.

--continued

Commodity Parity Prices – United States: March 2012 with Comparisons (continued)

[Parity prices are computed under the provisions of Title III, Subtitle a, Section 301 (a) of the Agricultural Adjustment Act of 1938 as amended by the Agricultural Acts of 1948, 1949, and 1956. See January *Agricultural Prices* for details on adjusted base price and parity price computations]

| Commodity and unit | Adjusted base price | Parity price | | | |
|---|---------------------|--------------|---------------|------------|----------|
| | | March 2011 | February 2012 | March 2012 | |
| | (dollars) | (dollars) | (dollars) | (dollars) | |
| Noncitrus fruit - continued | | | | | |
| Papayas (Hawaii) ⁹ | pound | 0.046 | 1.22 | 1.28 | 1.28 |
| Peaches | | | | | |
| Fresh ^{4 9} | ton | 83.00 | 2,200.00 | 2,310.00 | 2,320.00 |
| Dried (California) ⁹ | ton | 57.30 | 1,520.00 | 1,600.00 | 1,600.00 |
| Processing, excludes dried | | | | | |
| Clingstone (California) ^{3 9} | ton | 33.70 | 892.00 | 940.00 | 941.00 |
| Pears | | | | | |
| Fresh ^{4 9} | ton | 55.60 | 1,470.00 | 1,550.00 | 1,550.00 |
| Dried (California) ^{1 9} | ton | 178.00 | 4,710.00 | 4,960.00 | 4,970.00 |
| Plums (California) | | | | | |
| Fresh, equivalent on-tree ⁹ | ton | 60.20 | 1,590.00 | 1,680.00 | 1,680.00 |
| Prunes, dried (California) ^{1 9} | ton | 147.00 | 3,890.00 | 4,100.00 | 4,110.00 |
| Prunes and plums | | | | | |
| Fresh, excludes California ^{5 9} | ton | 63.80 | 1,690.00 | 1,780.00 | 1,780.00 |
| Processing, excludes dried ^{1 9} | ton | 25.70 | 681.00 | 717.00 | 718.00 |
| Tree nuts^{6 9} | | | | | |
| Almonds | pound | 0.209 | 5.53 | 5.83 | 5.84 |
| Hazelnuts | ton | 183.00 | 4,850.00 | 5,100.00 | 5,110.00 |
| Pistachios | pound | 0.194 | 5.14 | 5.41 | 5.42 |
| Walnuts | ton | 177.00 | 4,690.00 | 4,940.00 | 4,940.00 |
| Vegetables, fresh⁷ | | | | | |
| Carrots ⁸ | cwt | 2.69 | 69.10 | 75.00 | 75.10 |
| Cauliflower ⁸ | cwt | 4.31 | 113.00 | 120.00 | 120.00 |
| Celery ⁸ | cwt | 2.01 | 54.30 | 56.10 | 56.10 |
| Honeydew melons | cwt | 2.09 | 57.50 | 58.30 | 58.40 |
| Lettuce | cwt | 2.29 | 62.20 | 63.90 | 64.00 |
| Onions ⁸ | cwt | 1.49 | 41.60 | 41.60 | 41.60 |
| Tomatoes | cwt | 4.68 | 126.00 | 131.00 | 131.00 |

¹ Equivalent returns at processing plant door.

² Equivalent returns at packinghouse door.

³ Equivalent returns for bulk fruit at first delivery point.

⁴ Equivalent packinghouse-door returns for California, New York (apples only), Oregon (except peaches), and Washington. Price at point of first sale for other states.

⁵ Based on "as sold" prices for fresh fruit in all states.

⁶ Prices In-Shell basis except almonds which are shelled basis.

⁷ FOB shipping point prices.

⁸ Includes some processing.

⁹ Non-citrus fruit and tree nut estimates discontinued October 2011. The program was later reinstated with a publication date of March 15, 2012. Parity prices will be published in the July 2012 *Agricultural Prices* report to include these prices.

Reliability of Prices Received Estimates

Definition: Prices received represent sales from producers to first buyers. They include all grades and qualities. The average commodity price from the survey multiplied by the total quantity marketed theoretically should give the total cash receipts for the commodity.

Survey procedures: Primary sales data used to determine grain prices were obtained from probability samples of about 1900 mills and elevators. These procedures ensure that virtually all grain moving into commercial channels has a chance of being included in the survey. Generally, States surveyed account for 90 percent or more of total United States production. Livestock prices are obtained from packers, stockyards, auctions, dealers, and market check data from AMS-USDA, private marketing organizations, and state commodity groups and agencies. Inter-farm sales of grain and livestock are not included since they represent very small percentages of the total marketings. Grain marketed for seed is also excluded. Fruit and vegetable prices are obtained from sample surveys and market check data from AMS-USDA, private marketing organizations, state agencies, and universities.

Summary and estimation procedures: Survey quantities sold are expanded by strata to state levels and used to weight average strata prices to a state average. State prices are then weighted to a United States price based on expanded marketings. Recommendations are prepared by the State Field Offices and reviewed by the Agricultural Statistics Board in Washington, D.C. State recommendations are reviewed for reasonableness with survey data, other States, and recent historic estimates.

Revisions: For most items, the current month's preliminary price represents a 3-5 day period around the 15th of the month. Previous month's prices represent actual dollars received for quantities sold during the entire month. Revisions are published in monthly issues of Agricultural Prices.

Reliability: United States price estimates based on probability surveys generally have a sampling error of less than one percent for the major commodities such as corn, wheat, soybeans, cotton, and rice. Current methods of summarization for non-probability commodities are not designed directly to calculate sampling errors. However, analytical measures approximate the United States relative sampling errors at around five percent. Any nonsampling errors are attributed to such things as the inability to obtain correct information, differences in interpreting questions or definitions, mistakes in coding or processing the data, etc. Efforts are made at each step in the survey process to minimize these nonsampling errors.

Prices Paid by Farmers

The March Index of Prices Paid for Commodities and Services, Interest, Taxes, and Farm Wage Rates (PPITW) at 210 (1990-1992=100) is up 0.5 percent from February 2012 and 4.5 percent above March 2011.

Production index: The March index, at 222, is unchanged from last month but increased 5.2 percent from last year. Compared to February, higher prices in March for diesel, gasoline, feed grains, and concentrates offset lower prices for nitrogen, potash & phosphate, feeder cattle, and supplements.

Feed: The March index, at 226, increased 0.9 percent from February and 6.6 percent from last March. Since February, higher prices for feed grains, hay & forages, and concentrates offset lower prices for supplements and complete feeds.

Livestock and poultry: The March index, at 184, decreased 0.5 percent from last month but increased 16 percent from last year. Since February, prices for feeder cattle and feeder pigs are lower. The March feeder cattle price, at \$159.60 per cwt, is down \$1.00 per cwt from the February price. March feeder pigs averaged \$203.00 per cwt, down \$2.00 per cwt from February.

Fertilizer: The March index, at 322, is down 3.6 percent from February but 1.3 percent above March a year ago. Since February, lower prices for nitrogen and potash & phosphate more than offset higher prices for mixed fertilizer.

Chemicals: The March index, at 157, increased 2.6 percent from February and 8.3 percent from last March. Compared with last month, prices for herbicides, insecticides, and fungicides/other are higher.

Fuels: The March index, at 377, is up 4.7 percent from a month earlier and 3.9 percent above March 2011. Compared with last month, prices for diesel, gasoline, and LP gas are higher.

Machinery: The March index, at 244, decreased 0.4 percent from February but increased 2.1 percent from last March. Compared with last month, prices for other machinery and self-propelled machinery are lower.

Consumer price index: The February 2012 Consumer Price Index, as issued by the Bureau of Labor Statistics, for all urban consumers (CPI-U) increased 0.4 percent before seasonal adjustment to a level of 227.663 (1982-1984=100). The January index is 226.665. For the 12 month period ending in February, the overall index increased 2.9 percent.

Prices Paid Indexes and Related Parity Ratios – United States: March 2012 with Comparisons

[Revised historical price indexes for months not shown are available at www.nass.usda.gov]

| Indexes and ratios | 1910-1914 Base | | | 1990-1992 Base | | |
|---|----------------|---------------|------------|----------------|---------------|------------|
| | March 2011 | February 2012 | March 2012 | March 2011 | February 2012 | March 2012 |
| | (percent) | (percent) | (percent) | (percent) | (percent) | (percent) |
| Prices paid by farmers for commodities, services, interest, taxes, and wage rates (PPITW) | 2674 | 2785 | 2793 | 201 | 209 | 210 |
| Production | 2052 | 2150 | 2156 | 211 | 222 | 222 |
| Feed | 1037 | 1092 | 1106 | 212 | 224 | 226 |
| Livestock and poultry | 2027 | 2367 | 2353 | 159 | 185 | 184 |
| Seeds | 3327 | 3327 | 3327 | 336 | 336 | 336 |
| Fertilizer | 1165 | 1224 | 1179 | 318 | 334 | 322 |
| Chemicals | 894 | 948 | 973 | 145 | 153 | 157 |
| Fuels | 2801 | 2782 | 2910 | 363 | 360 | 377 |
| Supplies and repairs | 1155 | 1199 | 1199 | 163 | 169 | 169 |
| Autos and trucks | 3067 | 3133 | 3158 | 115 | 118 | 119 |
| Machinery | 6002 | 6135 | 6129 | 239 | 245 | 244 |
| Building materials | 2305 | 2370 | 2393 | 170 | 174 | 176 |
| Services and rent | 2119 | 2181 | 2183 | (NA) | (NA) | (NA) |
| Services | (NA) | (NA) | (NA) | 164 | 167 | 167 |
| Rent | (NA) | (NA) | (NA) | 205 | 212 | 212 |
| Interest ¹ | 3381 | 3635 | 3635 | 135 | 145 | 145 |
| Taxes ² | 5935 | 6225 | 6225 | 222 | 232 | 232 |
| Wage rates | 7301 | 7205 | 7205 | 195 | 193 | 193 |
| Production, interest, taxes, and wage rates (PITW) | 2784 | 2908 | 2916 | 207 | 216 | 217 |
| Family living-CPI ³ | 2122 | 2162 | 2172 | 166 | 169 | 170 |
| Ratio (received/paid) | (NA) | (NA) | (NA) | 86 | 87 | 89 |
| Parity ratio ⁴ | 41 | 41 | 42 | (NA) | (NA) | (NA) |
| Parity ratio adjusted ⁵ | 42 | 42 | 43 | (NA) | (NA) | (NA) |
| PPITW adjusted for productivity ⁶ | 1464 | 1473 | 1475 | (NA) | (NA) | (NA) |
| Crop sector (PPITW) | (NA) | (NA) | (NA) | 211 | 218 | 218 |
| Livestock sector (PPITW) | (NA) | (NA) | (NA) | 190 | 200 | 201 |
| Farm sector (production) | (NA) | (NA) | (NA) | 214 | 230 | 231 |
| Non-farm sector (production) | (NA) | (NA) | (NA) | 210 | 217 | 217 |

(NA) Not available.

¹ Interest per acre on farm real estate debt and interest rate on farm non-real estate debt.

² Farm real estate taxes payable per acre.

³ Bureau of Labor Statistics, Consumer Price Index for all urban consumers (CPI-U), for the previous month converted by the USDA.

⁴ Ratio of index of prices received to PPITW (1910-1914=100).

⁵ Based on estimated cash receipts, from marketings and government payments, the preliminary adjustment factor is 1.044 for 2012 and the revised factor is 1.041 for 2011.

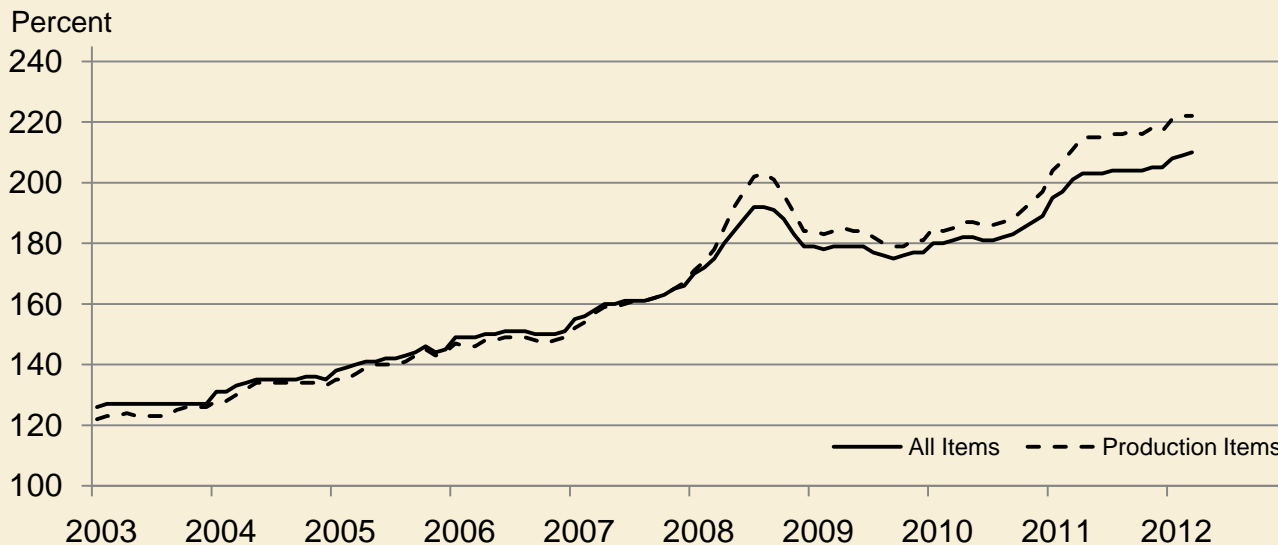
⁶ PPITW is adjusted based on productivity trend for the prior 15 years.

Prices Paid Indexes and Annual Weights for Input Components and Sub-Components – United States: March 2012 with Comparisons

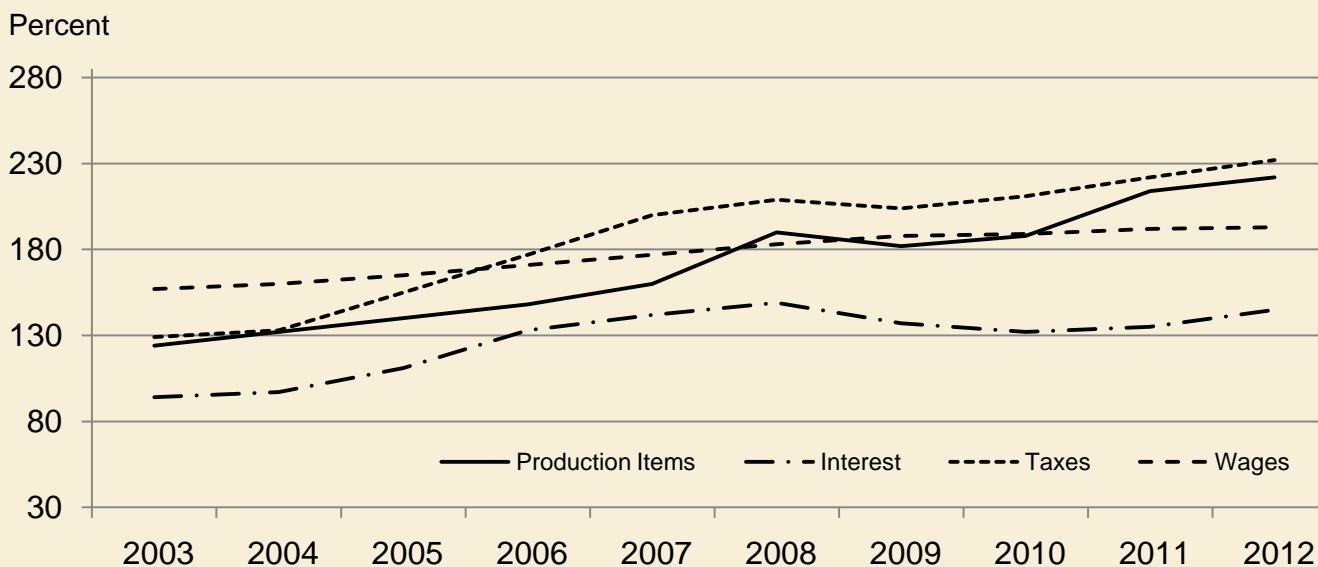
[Revised historical price indexes for months not shown are available at www.nass.usda.gov. Relative weights are a five year moving average]

| | Relative weights | | Indexes (1990-1992=100) | | |
|-----------------------------|------------------|-----------|-------------------------|---------------|------------|
| | 2011 | 2012 | March 2011 | February 2012 | March 2012 |
| | (percent) | (percent) | (percent) | (percent) | (percent) |
| Production items | 70.6 | 71.1 | 211 | 222 | 222 |
| Feed | 12.2 | 12.7 | 212 | 224 | 226 |
| Feed grains | 1.7 | 1.8 | 240 | 269 | 277 |
| Complete feeds | 6.0 | 6.2 | 217 | 220 | 219 |
| Hay and forages | 1.5 | 1.6 | 166 | 227 | 234 |
| Concentrates | 1.9 | 2.0 | 204 | 194 | 200 |
| Supplements | 1.0 | 1.1 | 225 | 223 | 220 |
| Livestock and poultry | 8.5 | 8.3 | 159 | 185 | 184 |
| Feeder cattle | 6.6 | 6.5 | 157 | 190 | 189 |
| Feeder pigs | 0.7 | 0.7 | 221 | 223 | 221 |
| Milk cow replacements | 0.7 | 0.7 | 115 | 129 | 129 |
| Poultry | 0.5 | 0.5 | 151 | 151 | 151 |
| Seeds | 4.1 | 4.3 | 336 | 336 | 336 |
| Field crops | 3.7 | 3.9 | 356 | 356 | 356 |
| Grasses and legumes | 0.4 | 0.4 | 145 | 145 | 145 |
| Fertilizer | 5.5 | 5.7 | 318 | 334 | 322 |
| Mixed fertilizer | 2.4 | 2.5 | 310 | 330 | 333 |
| Nitrogen | 2.3 | 2.4 | 311 | 331 | 305 |
| Potash and phosphate | 0.8 | 0.8 | 361 | 357 | 335 |
| Chemicals | 3.3 | 3.2 | 145 | 153 | 157 |
| Herbicides | 2.1 | 2.0 | 130 | 138 | 141 |
| Insecticides | 0.7 | 0.7 | 167 | 177 | 182 |
| Fungicides and other | 0.5 | 0.5 | 174 | 185 | 189 |
| Fuels | 4.0 | 4.0 | 363 | 360 | 377 |
| Diesel | 2.5 | 2.5 | 403 | 408 | 425 |
| Gasoline | 0.8 | 0.8 | 308 | 310 | 331 |
| LP gas | 0.7 | 0.7 | 284 | 248 | 257 |
| Supplies and repairs | 4.6 | 4.6 | 163 | 169 | 169 |
| Supplies | 1.5 | 1.5 | 158 | 164 | 164 |
| Repairs | 3.0 | 3.0 | 165 | 171 | 171 |
| Autos and trucks | 1.4 | 1.2 | 115 | 118 | 119 |
| Autos | 0.2 | 0.2 | 112 | 116 | 116 |
| Trucks | 1.2 | 1.1 | 116 | 118 | 119 |
| Machinery | 4.3 | 4.3 | 239 | 245 | 244 |
| Tractors | 0.9 | 0.9 | 203 | 206 | 206 |
| Self-propelled | 1.7 | 1.7 | 250 | 254 | 254 |
| Other machinery | 1.6 | 1.6 | 249 | 257 | 256 |
| Building materials | 4.4 | 4.2 | 170 | 174 | 176 |
| Services | 12.1 | 12.0 | 164 | 167 | 167 |
| Custom rates | 1.2 | 1.2 | 148 | 148 | 148 |
| Other services | 10.9 | 10.7 | 165 | 169 | 169 |
| Rent | 6.3 | 6.6 | 205 | 212 | 212 |
| Cash | 3.4 | 3.5 | 262 | 270 | 270 |
| Share | 2.9 | 3.0 | 139 | 145 | 145 |
| Interest | 3.5 | 3.4 | 135 | 145 | 145 |
| Taxes | 3.1 | 3.1 | 222 | 232 | 232 |
| Wage rates | 7.4 | 7.2 | 195 | 193 | 193 |
| Family living-CPI | 15.4 | 15.3 | 166 | 169 | 170 |

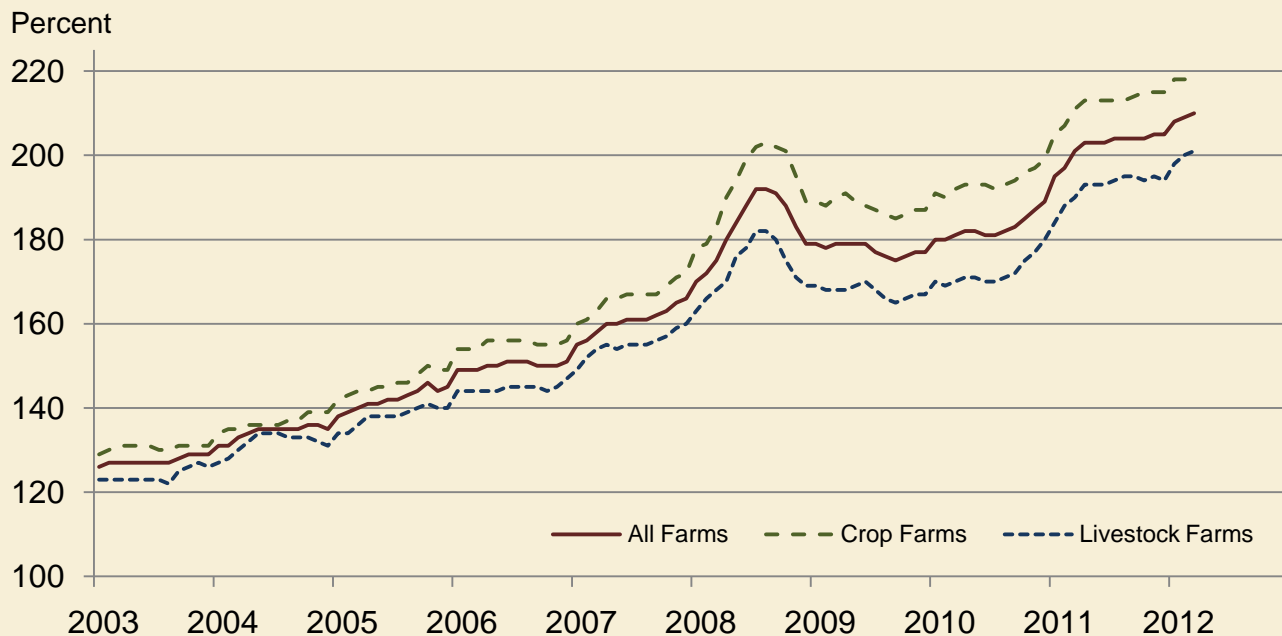
Paid Indexes by Month, All Items and Production Items – United States: 1990-1992=100



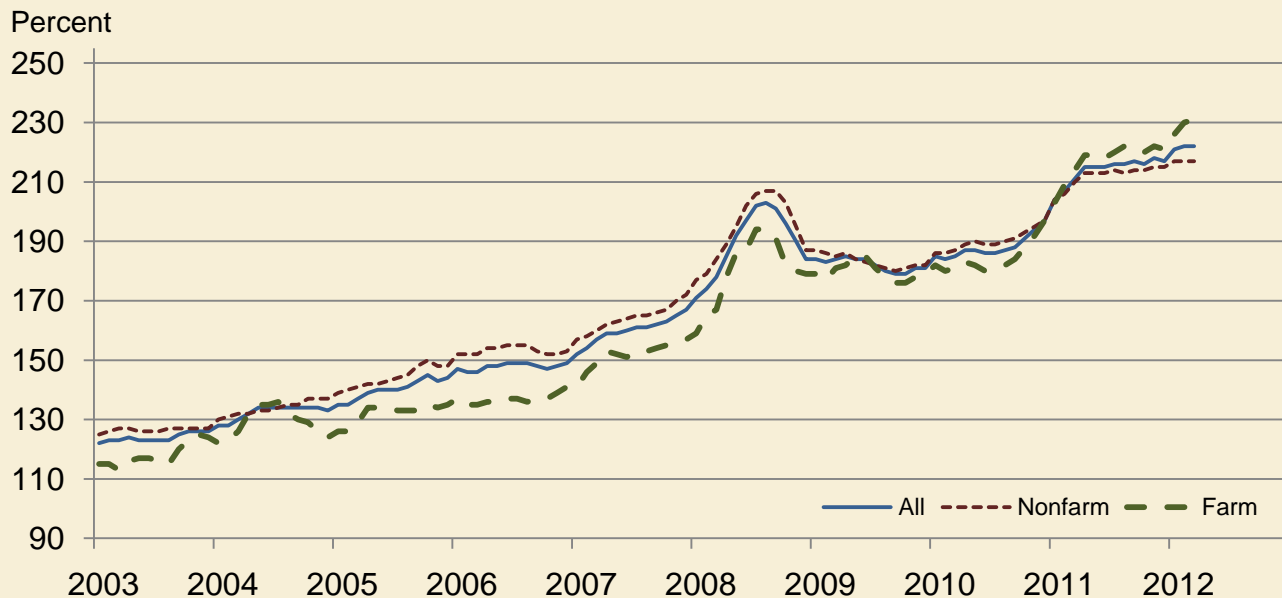
Paid Indexes, Annual Averages, Production Items, Interest, Taxes, and Wages – United States: 1990-1992=100



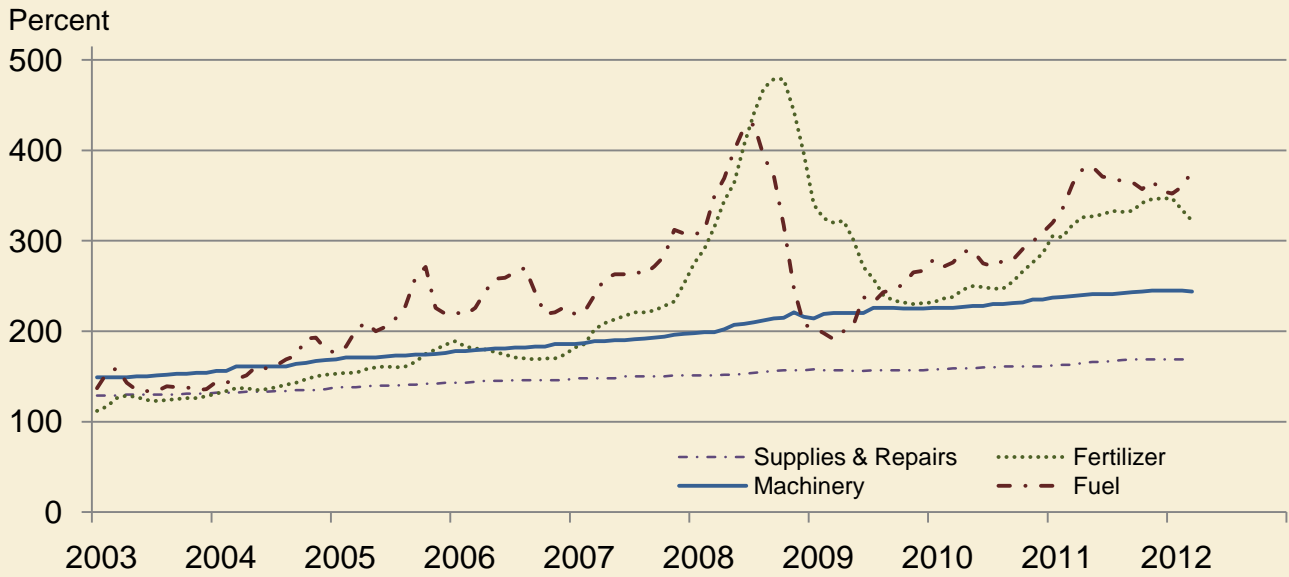
Paid Indexes by Farm Type and Month, All Items – United States: 1990-1992=100



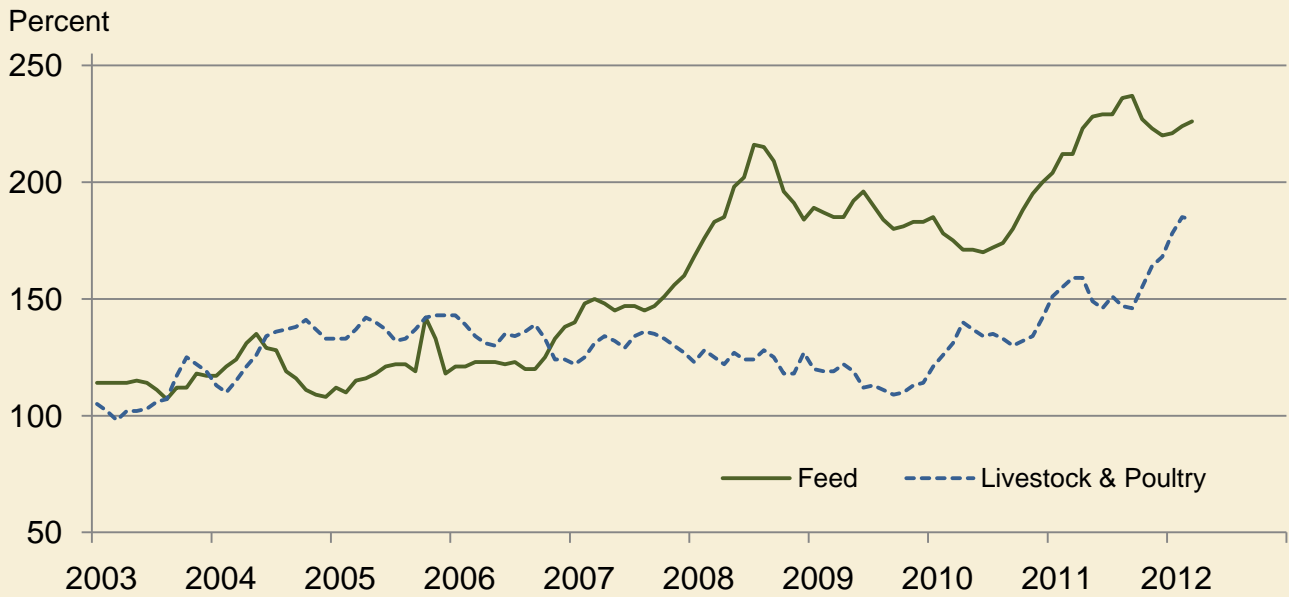
Paid Indexes by Origin and Month, All Production Items – United States: 1990-1992=100



Paid Indexes by Non-Farm Sector and Month, Supplies & Repairs, Fertilizer, Machinery, and Fuel – United States: 1990-1992=100



Paid Indexes by Month, Feed and Livestock & Poultry – United States: 1990-1992=100



Feed Price Ratios – United States: March 2012 with Comparisons

| Feed price ratio ¹ | March 2011 | February 2012 | Preliminary March 2012 |
|--|------------|---------------|------------------------|
| Broiler-feed: pounds of broiler grower feed equal in value to 1 pound of broiler, live weight ² | 3.4 | 3.5 | 3.6 |
| Market egg feed: pounds of laying feed equal in value to 1 dozen eggs ³ | 5.1 | 5.0 | 5.6 |
| Hog-corn: bushels of corn equal in value to 100 pounds of hog, live weight | 11.4 | 10.4 | 10.1 |
| Milk-feed: pounds of 16% mixed dairy feed equal in value to 1 pound of whole milk ⁴ | 2.12 | 1.55 | 1.48 |
| Steer and heifer-corn: bushels of corn equal in value to 100 pounds of steer & heifers, live weight | 21.3 | 20.9 | 20.7 |
| Turkey-feed: pounds of turkey grower equal in value to 1 pound of turkey, live weight ⁵ | 4.4 | 4.7 | 4.7 |

¹ Effective January 1995, prices of commercial prepared feeds are based on current United States prices received for corn, soybeans, alfalfa hay, and all wheat.

² The price of commercial prepared broiler feed is based on current United States prices received for corn and soybeans. The modeled feed uses 58 percent corn and 42 percent soybeans.

³ The price of commercial prepared layer feed is based on current United States prices received for corn and soybeans. The modeled feed uses 75 percent corn and 25 percent soybeans.

⁴ The price of commercial prepared dairy feed is based on current United States prices received for corn, soybeans, and alfalfa hay. The modeled feed uses 51 percent corn, 41 percent alfalfa hay, and 8 percent soybeans.

⁵ The price of commercial prepared turkey feed is based on current United States prices received for corn, soybeans, and wheat. The modeled feed uses 51 percent corn, 28 percent soybeans, and 21 percent wheat.

Prices Received Used to Calculate Feed Price Ratios – United States: March 2012 with Comparisons

[Price data source for livestock and poultry commodities is United States Department of Agriculture's Agricultural Marketing Service]

| Item | March 2011 | February 2012 | Preliminary March 2012 |
|-----------------------------|------------|---------------|------------------------|
| | (dollars) | (dollars) | (dollars) |
| Broilers, livepound | 0.490 | 0.530 | 0.570 |
| Eggs, marketdozen | 0.652 | 0.669 | 0.791 |
| Hogs, allcwt | 62.90 | 65.50 | 65.70 |
| Milk, allcwt | 20.40 | 17.70 | 17.40 |
| Steers and heiferscwt | 118.00 | 131.00 | 134.00 |
| Turkeys, livepound | 0.599 | 0.650 | 0.685 |
| Cornbushel | 5.53 | 6.28 | 6.48 |
| Hay, alfalfaton | 142.00 | 198.00 | 201.00 |
| Soybeansbushel | 12.70 | 12.20 | 13.10 |
| Wheat, allbushel | 7.55 | 7.10 | 7.24 |

Prices Paid for Feeder Livestock – United States: March 2012 with Comparisons

[Price data source is United States Department of Agriculture's Agricultural Marketing Service]

| Item | March 2011 | February 2012 | Preliminary March 2012 |
|-----------------------------------|------------|---------------|------------------------|
| | (dollars) | (dollars) | (dollars) |
| Feeder cattle and calvescwt | 133.20 | 160.60 | 159.60 |
| Feeder pigscwt | 203.00 | 205.00 | 203.00 |

Reliability of Prices Paid Estimates

Definition: Prices paid by farmers represent the average costs of inputs purchased by farmers and ranchers to produce agricultural commodities. Conceptually, the average price when multiplied by quantity purchased should equal total producer expenditures for the item.

Survey procedures: The prices paid data are obtained from establishments that sell goods and services to farmers and ranchers. Annually, about 8,500 firms are randomly selected from lists by type of item sold with an average response rate in the range of 75-80 percent. Firms are asked to report the price for the specified item "most commonly bought by farmers" or that was the "volume seller". Approximately 135 items are surveyed each March to represent all production input items purchased. The survey reference period for most items is the five business days centered around the 15th of the month. Separate prices paid surveys are conducted for agricultural chemicals, fuels, feed, fertilizer, machinery, and seed.

Summary and estimation procedures: The annual March Prices Paid Survey is summarized as a nonprobability survey. Average prices reported are aggregated to the region and United States level using weights available from expenditure data and other administrative sources. Price recommendations are prepared by the State Field Offices and Headquarters for review by the Agricultural Statistics Board in Washington, D.C. Also, the change in price level for individual items surveyed are combined to the regional and United States levels, and are published as prices paid indexes referenced to a specific base period. Prices paid indexes for new autos and trucks, building materials, farm supplies, motor supplies, and marketing containers are updated based on price changes measured in selected Bureau of Labor Statistics (BLS) indexes.

Revisions: Any revisions are published in the monthly and in annual issues of Agricultural Prices. The basis for revision must be supported by additional data that directly affect the level of the estimate. More revisions are likely for March when separate prices paid surveys are conducted, in lieu of BLS indexes, by the USDA to measure price change.

Reliability: Current methods of summarization for the March data are not designed directly to calculate sampling errors. However, analytical measures approximate the United States relative sampling errors for major items around 10 percent. Any nonsampling errors are attributed to such things as the inability to obtain correct information, differences in interpreting questions or definitions, mistakes in coding or processing the data, etc. Efforts are made at each step in the survey process to minimize these nonsampling errors.

Program change: Effective January 1, 1995, the National Agricultural Statistics Service updated the weights and changed the construction of its prices paid and received by farmers indexes. A Federal Register Notice dated October 28, 1994 discussed these program modifications.

A 1990-1992 reference and base period replaced the 1977 reference and 1971-1973 base weight period. Five-year moving average weights replaced the current fixed 1971-1973 base period weights. The 1910-1914=100 price indexes, required by statute for computing parity prices, were linked forward based on the changes in the new 1990-1992=100 indexes. The new indexes were constructed by multiplying the ratios of the current prices to the base period prices by the moving average weights (adjusted for seasonal marketing patterns for the prices received indexes).

Information Contacts

Direct general questions to Dale Hawks, Acting Chief, Environmental, Economics and Demographics Branch at (202) 720-6146. Below are the commodity specialists to contact for additional information.

Crop Prices Received

| | |
|---|----------------|
| Lance Honig, Chief, Crops Branch | (202) 720-2127 |
| Jacqueline Moore, Head, Field Crops Section | (202) 720-2127 |
| Suzanne Avilla – Peanuts, Rice..... | (202) 720-7688 |
| Bryan Durham – Oats, Rye, Wheat..... | (202) 720-8068 |
| Steve Maliszewski – Cotton, Cotton Ginnings, Sorghum..... | (202) 720-5944 |
| Anthony Prillaman – Corn, Proso Millet, Flaxseed | (202) 720-9526 |
| Julie Schmidt – Crop Weather, Barley, Hay | (202) 720-7621 |
| Travis Thorson – Soybeans, Sunflower, Other Oilseeds..... | (202) 720-7369 |
| Jorge Garcia-Pratts, Head, Fruits, Vegetables and Special Crops Section..... | (202) 720-2127 |
| Debbie Flippin – Fresh and Processing Vegetables, Onions, Strawberries..... | (202) 720-2157 |
| Fred Granja – Apples, Apricots, Cherries, Plums, Prunes, Tobacco | (202) 720-4288 |
| Erika White – Floriculture, Maple Syrup, Nursery, Tree Nuts | (202) 720-4215 |
| Chris Hawthorn – Citrus, Coffee, Sugar Crops, Grapes, Tropical Fruits..... | (202) 720-5412 |
| Daphne Schauber – Berries, Cranberries, Potatoes, Sweet Potatoes | (202) 720-4285 |
| Dan Norris – Austrian Winter Peas, Dry Edible Peas, Lentils, Mints, Mushrooms, Peaches, Pears, Wrinkled Seed Peas, Dry Beans | (202) 720-3250 |

Livestock Prices Received

| | |
|---|----------------|
| Dan Kerestes, Chief, Livestock Branch | (202) 720-3570 |
| Scott Hollis, Head, Livestock Section..... | (202) 720-3570 |
| Travis Averill – Cattle..... | (202) 720-3040 |
| Mike Miller – Milk, Milk Cows | (202) 720-3278 |
| Doug Bounds – Hogs | (202) 720-3106 |
| Bruce Boess, Head, Poultry and Specialty Commodities Section..... | (202) 720-3570 |
| Cody Brokmeyer – Turkeys..... | (202) 690-3237 |
| LaKeya Jones – Honey | (202) 720-0585 |
| Kim Linonis – Eggs..... | (202) 690-8632 |
| Miste Salmon – Broilers..... | (202) 720-3244 |

Indexes, Prices Paid, and Parity Prices

| | |
|---|----------------|
| Dale Hawks, Acting Chief, Environmental, Economics and Demographics Branch..... | (202) 720-6146 |
| Scott Shimmin, Acting Head, Economics Section | (202) 690-3231 |
| Daryl Brinkman – Prices Received Indexes, Parity Prices | (202) 720-8844 |
| Scott Shimmin – Grazing Fees..... | (202) 690-3231 |
| Vincent Davis – Prices Paid Indexes, Prices Paid for Feed, Fertilizer, Agricultural Chemicals, Seeds, Farm Supplies and Repairs, Farm Machinery, Fuels, Feeder Livestock, Poultry Chicks, Feed Price Ratios, Autos & Trucks..... | (202) 690-3229 |

Access to NASS Reports

For your convenience, you may access NASS reports and products the following ways:

- All reports are available electronically, at no cost, on the NASS web site: <http://www.nass.usda.gov>
- Both national and state specific reports are available via a free e-mail subscription. To set-up this free subscription, visit <http://www.nass.usda.gov> and in the “Follow NASS” box under “Receive reports by Email,” click on “National” or “State” to select the reports you would like to receive.
- Printed reports may be purchased from the National Technical Information Service (NTIS) by calling toll-free (800) 999-6779, or (703) 605-6220 if calling from outside the United States or Canada. Accepted methods of payment are Visa, MasterCard, check, or money order.

For more information on NASS surveys and reports, call the NASS Agricultural Statistics Hotline at (800) 727-9540, 7:30 a.m. to 4:00 p.m. ET, or e-mail: nass@nass.usda.gov.

The United States Department of Agriculture (USDA) prohibits discrimination in all its programs and activities on the basis of race, color, national origin, age, disability, and where applicable, sex, marital status, familial status, parental status, religion, sexual orientation, political beliefs, genetic information, reprisal, or because all or a part of an individual's income is derived from any public assistance program. (Not all prohibited bases apply to all programs.) Persons with disabilities who require alternative means for communication of program information (Braille, large print, audiotape, etc.) should contact USDA's TARGET Center at (202) 720-2600 (voice and TDD).

To file a complaint of discrimination, write to USDA, Assistant Secretary for Civil Rights, Office of the Assistant Secretary for Civil Rights, 1400 Independence Avenue, S.W., Stop 9410, Washington, DC 20250-9410, or call toll-free at (866) 632-9992 (English) or (800) 877-8339 (TDD) or (866) 377-8642 (English Federal-relay) or (800) 845-6136 (Spanish Federal-relay). USDA is an equal opportunity provider and employer.