

Sheep and Goats

Released January 29, 2010, by the National Agricultural Statistics Service (NASS), Agricultural Statistics Board, U.S. Department of Agriculture. For information on *Sheep and Goats* call Everett Olbert at 202-720-4751, office hours 7:30 a.m. to 4:00 p.m. ET.

Total Sheep and Lamb Inventory Down 2 Percent

All sheep and lamb inventory in the United States on January 1, 2010, totaled 5.63 million head, down 2 percent from 2009.

Breeding sheep inventory decreased to 4.19 million head on January 1, 2010, down 1 percent from 4.25 million head on January 1, 2009. Ewes one year old and older, at 3.34 million head, were 2 percent below last year.

Market sheep and lambs on January 1, 2010, totaled 1.44 million head, down 4 percent from January 1, 2009. Market lambs comprised 94 percent of the total marketings. Twenty-five percent were lambs under 65 pounds, 12 percent were 65 - 84 pounds, 19 percent were 85 - 105 pounds, and 38 percent were over 105 pounds. Market sheep comprised the remaining 6 percent of total marketings.

The 2009 lamb crop of 3.69 million head, was down 1 percent from 2008. The 2009 lambing rate was 108 lambs per 100 ewes one year old and older on January 1, 2009, up 3 percent from 2008.

Shorn wool production in the United States during 2009 was 30.9 million pounds, down 6 percent from 2008. Sheep and lambs shorn totaled 4.20 million head, down 5 percent from 2008. The average price paid for wool sold in 2009 was \$0.79 per pound for a total value of 24.4 million dollars, down 25 percent from 32.5 million dollars in 2008.

Total Goat and Kid Inventory Down 1 Percent

All goat inventory in the United States on January 1, 2010, totaled 3.04 million head, down 1 percent from 2009.

Breeding goat inventory totaled 2.53 million head, down 1 percent from 2009. Does one year old and older, at 1.87 million head, were 1 percent below last year's number.

Market goats and kids totaled 518,000 head, down 2 percent from a year ago.

Kid crop for 2009 totaled 1.94 million head for all goats, down 1 percent from 2008.

Meat and all other goats totaled 2.54 million head on January 1, 2010, down slightly from 2009. **Milk goat** inventory increased to 355,000 head, 6 percent above January 1, 2009, while **Angora goats** were down 19 percent, totaling 150,000 head.

Mohair production in the United States during 2009 was 1.01 million pounds. Goats and kids clipped totaled 160,500 head. Average weight per clip was 6.3 pounds. Mohair price was \$2.66 per pound with a value of 2.69 million dollars.

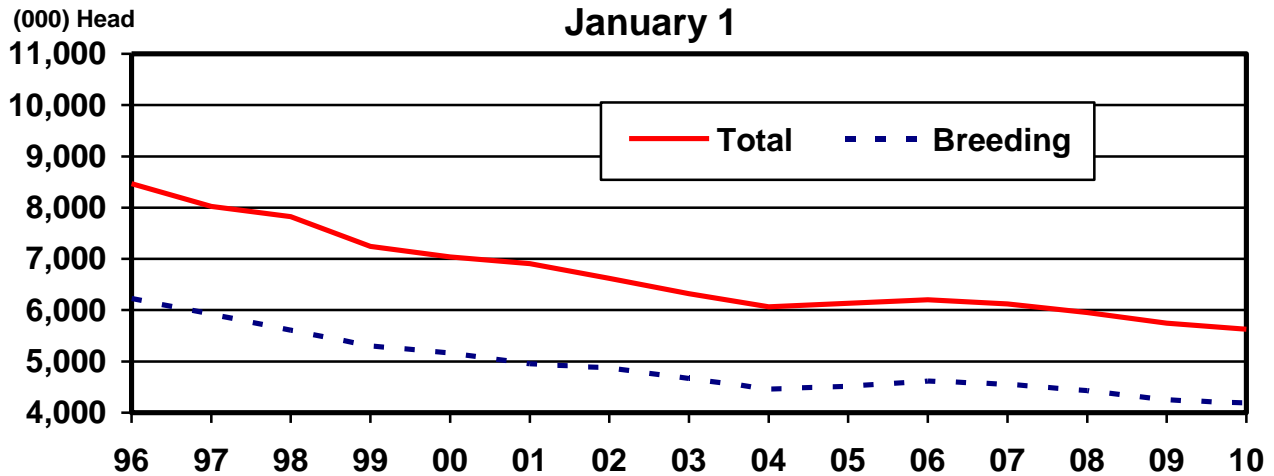
Contents

	Page
Sheep and Lambs	
U.S. Inventory by Class, 2009-2010	1
U.S. Wool Production, Price, and Value, 2008-2009	2
Inventory and Class by State, 2009-2010	3
Sheep Shorn and Wool Production by State, 2008-2009	8
Wool Price and Value by State, 2008-2009	9
Goats and Kids	
U.S. All Goat Inventory by Class 2009-2010	10
U.S. Angora Goat Inventory by Class 2009-2010	11
U.S. Milk Goat Inventory by Class 2009-2010	11
U.S. Meat Goat Inventory by Class 2009-2010	11
Angora Goat Inventory by State 2009-2010	12
Mohair Production, Price, and Value 2008-2009	12
Milk Goat Inventory by State 2009-2010	13
Meat and Other Goat Inventory by State 2009-2010	14
Reliability Statement	15
Information Contacts	16

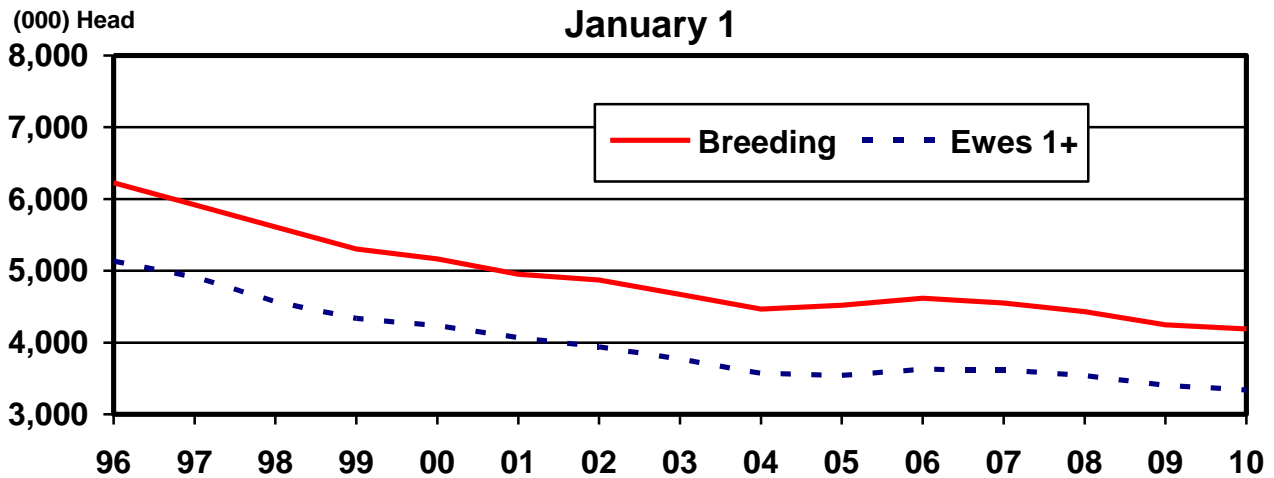
**Sheep and Lambs: Number by Class,
United States, January 1, 2009-2010**

Class	2009	2010	2010 as % of 2009
	<i>1,000 Head</i>	<i>1,000 Head</i>	<i>Percent</i>
All Sheep and Lambs	5,747	5,630	98
Breeding Sheep and Lambs	4,247	4,190	99
Replacement Lambs	647	655	101
Under One Year Old			
Ewes - One Year Old	3,405	3,340	98
and Older			
Rams - One Year Old	196	195	100
and Older			
Market	1,500	1,440	96

**U.S. Sheep and Lambs Inventory
January 1**



**U.S. Total Breeding and Ewes 1+
January 1**

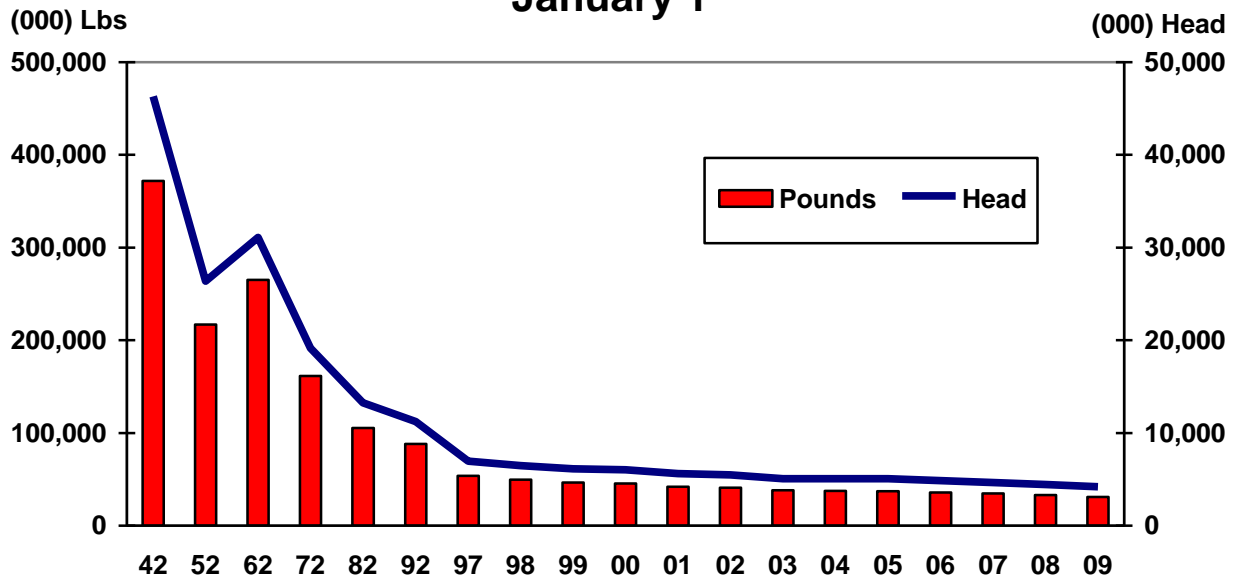


Wool: Production, Price, and Value, United States, 2008-2009

Year	Sheep Shorn ¹	Weight per Fleece	Shorn Wool Production	Price per Pound	Value
	<i>1,000 Head</i>	<i>Pounds</i>	<i>1,000 Pounds</i>	<i>Dollars</i>	<i>1,000 Dollars</i>
2008	4,434	7.43	32,963	0.99	32,486
2009	4,197	7.35	30,862	0.79	24,387

¹ Includes shearing at commercial feeding yards.

U.S. Sheep & Lambs Shorn & Wool Production January 1



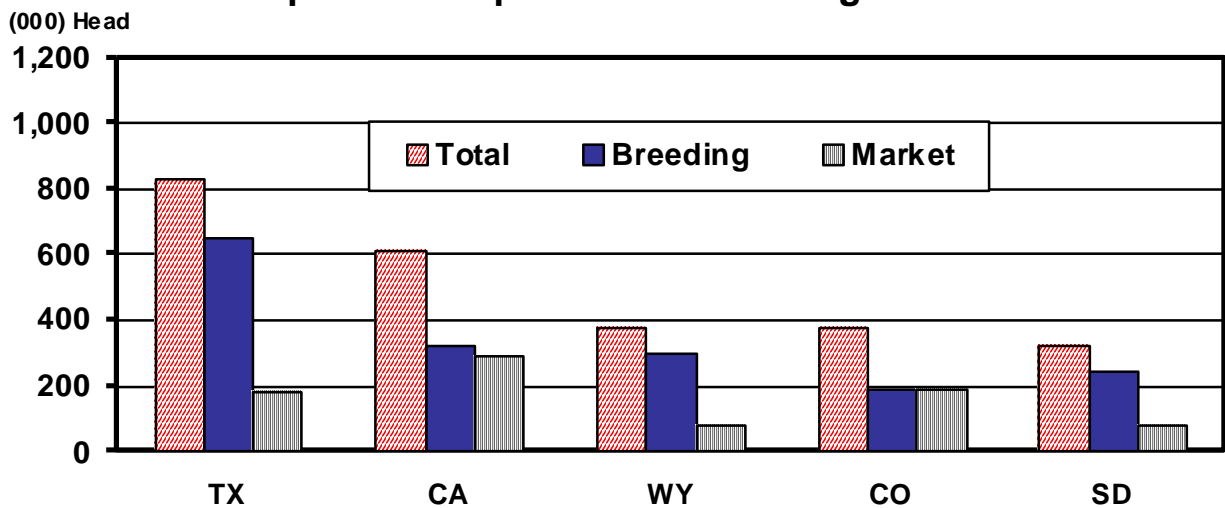
**All Sheep and Lambs: Number by Class,
State, and United States, January 1, 2009-2010**

State	All Sheep and Lambs			Total Breeding		Total Market	
	2009	2010	2010 as % of 2009	2009	2010	2009	2010
	<i>1,000 Head</i>	<i>1,000 Head</i>	<i>Percent</i>	<i>1,000 Head</i>	<i>1,000 Head</i>	<i>1,000 Head</i>	<i>1,000 Head</i>
AZ	150.0	160.0	107	90.0	95.0	60.0	65.0
CA	660.0	610.0	92	345.0	320.0	315.0	290.0
CO	410.0	375.0	91	205.0	190.0	205.0	185.0
ID	210.0	220.0	105	178.0	180.0	32.0	40.0
IL	58.0	64.0	110	50.0	55.0	8.0	9.0
IN	50.0	52.0	104	43.0	46.0	7.0	6.0
IA	200.0	210.0	105	145.0	145.0	55.0	65.0
KS	80.0	80.0	100	57.0	50.0	23.0	30.0
KY	40.0	37.0	93	33.0	29.0	7.0	8.0
MD	24.0			18.0		6.0	
MI	78.0	80.0	103	60.0	61.0	18.0	19.0
MN	140.0	130.0	93	102.0	92.0	38.0	38.0
MO	83.0	79.0	95	74.0	71.0	9.0	8.0
MT	255.0	255.0	100	230.0	235.0	25.0	20.0
NE	71.0	74.0	104	57.0	58.0	14.0	16.0
NV	67.0	75.0	112	57.0	64.0	10.0	11.0
N ENG ¹	48.0	47.5	99	41.0	41.5	7.0	6.0
NM	120.0	120.0	100	103.0	105.0	17.0	15.0
NY	62.0	66.0	106	50.0	54.0	12.0	12.0
NC	28.0	25.0	89	24.0	20.0	4.0	5.0
ND	88.0	88.0	100	67.0	71.0	21.0	17.0
OH	130.0	128.0	98	100.0	103.0	30.0	25.0
OK	80.0	75.0	94	63.0	59.0	17.0	16.0
OR	220.0	225.0	102	150.0	154.0	70.0	71.0
PA	100.0	94.0	94	84.0	80.0	16.0	14.0
SD	305.0	320.0	105	245.0	245.0	60.0	75.0
TN	34.0	31.5	93	27.0	25.5	7.0	6.0
TX	870.0	830.0	95	660.0	650.0	210.0	180.0
UT	290.0	290.0	100	260.0	260.0	30.0	30.0
VA	75.0	89.0	119	62.0	71.0	13.0	18.0
WA	53.0	60.0	113	43.0	48.0	10.0	12.0
WV	33.0	30.0	91	28.0	25.0	5.0	5.0
WI	85.0	90.0	106	68.0	75.0	17.0	15.0
WY	420.0	375.0	89	325.0	300.0	95.0	75.0
Oth Sts ²	130.0	145.0	112	103.0	112.0	27.0	33.0
US	5,747.0	5,630.0	98	4,247.0	4,190.0	1,500.0	1,440.0

¹ N ENG includes CT, ME, MA, NH, RI, and VT.

² Individual state estimates not available for states not shown, but are included in Other States. MD is included in Other States for 2010.

**Total Inventory, January 1, 2010
Top Five Sheep & Lamb Producing States**



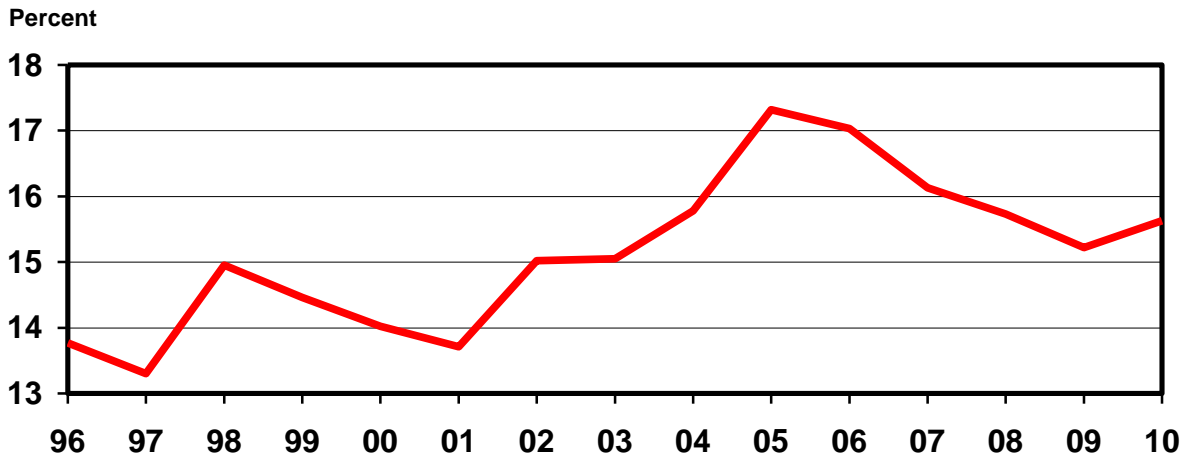
**Breeding Sheep and Lambs: Number by Class, State,
and United States, January 1, 2009-2010**

State	Breeding Sheep-One Year Old & Older				Replacement Lambs		Total Breeding Sheep and Lambs	
	Ewes		Rams		2009	2010	2009	2010
	2009	2010	2009	2010				
	<i>1,000 Head</i>	<i>1,000 Head</i>	<i>1,000 Head</i>	<i>1,000 Head</i>	<i>1,000 Head</i>	<i>1,000 Head</i>	<i>1,000 Head</i>	<i>1,000 Head</i>
AZ	75.0	75.0	6.0	6.0	9.0	14.0	90.0	95.0
CA	290.0	263.0	10.0	12.0	45.0	45.0	345.0	320.0
CO	167.0	155.0	6.0	5.0	32.0	30.0	205.0	190.0
ID	148.0	150.0	5.0	5.0	25.0	25.0	178.0	180.0
IL	35.0	41.0	3.0	3.0	12.0	11.0	50.0	55.0
IN	34.0	36.0	2.5	3.0	6.5	7.0	43.0	46.0
IA	120.0	116.0	7.0	6.0	18.0	23.0	145.0	145.0
KS	47.0	41.0	3.0	2.0	7.0	7.0	57.0	50.0
KY	25.0	23.0	2.0	1.5	6.0	4.5	33.0	29.0
MD	14.0		1.0		3.0		18.0	
MI	47.0	46.0	3.0	3.0	10.0	12.0	60.0	61.0
MN	83.0	76.0	5.0	5.0	14.0	11.0	102.0	92.0
MO	58.0	55.0	4.0	4.0	12.0	12.0	74.0	71.0
MT	180.0	188.0	7.0	8.0	43.0	39.0	230.0	235.0
NE	46.0	47.0	3.0	3.0	8.0	8.0	57.0	58.0
NV	44.0	49.0	2.0	2.0	11.0	13.0	57.0	64.0
N ENG ¹	31.0	30.0	3.0	4.0	7.0	7.5	41.0	41.5
NM	83.0	84.0	5.0	5.0	15.0	16.0	103.0	105.0
NY	40.0	42.0	3.0	3.0	7.0	9.0	50.0	54.0
NC	17.0	15.0	2.0	2.0	5.0	3.0	24.0	20.0
ND	55.0	59.0	2.0	2.0	10.0	10.0	67.0	71.0
OH	77.0	81.0	5.0	6.0	18.0	16.0	100.0	103.0
OK	46.0	43.0	5.0	5.0	12.0	11.0	63.0	59.0
OR	121.0	121.0	7.0	8.0	22.0	25.0	150.0	154.0
PA	64.0	63.0	6.0	5.0	14.0	12.0	84.0	80.0
SD	205.0	205.0	8.0	8.0	32.0	32.0	245.0	245.0
TN	20.0	19.0	2.0	2.5	5.0	4.0	27.0	25.5
TX	520.0	510.0	40.0	35.0	100.0	105.0	660.0	650.0
UT	220.0	215.0	9.0	9.0	31.0	36.0	260.0	260.0
VA	48.0	55.0	3.0	4.0	11.0	12.0	62.0	71.0
WA	35.0	38.0	2.0	3.0	6.0	7.0	43.0	48.0
WV	23.0	20.0	1.0	1.0	4.0	4.0	28.0	25.0
WI	54.0	57.0	3.0	4.0	11.0	14.0	68.0	75.0
WY	260.0	240.0	10.0	9.0	55.0	51.0	325.0	300.0
Oth Sts ²	73.0	82.0	10.0	11.0	20.0	19.0	103.0	112.0
US	3,405.0	3,340.0	195.5	195.0	646.5	655.0	4,247.0	4,190.0

¹ N ENG includes CT, ME, MA, NH, RI, and VT.

² Individual state estimates not available for states not shown, but are included in Other States. MD is included in Other States for 2010.

**U.S. Replacement Lambs, Percent of All Breeding Sheep
January 1**



Lamb Crop: Per 100 Ewes 1+, Number and Percent of Previous Year, by State, and United States, 2008-2009

State	Breeding Ewes 1 Year & Older Jan 1		Lambs per 100 Ewes 1+ Jan 1		Lamb Crop ¹		
	2008	2009	2008	2009	2008	2009	2009 as % of 2008
	<i>1,000 Head</i>	<i>1,000 Head</i>	<i>Number</i>	<i>Number</i>	<i>1,000 Head</i>	<i>1,000 Head</i>	<i>Percent</i>
AZ	76.0	75.0	62	67	47.0	50.0	106
CA	285.0	290.0	81	86	230.0	250.0	109
CO	170.0	167.0	124	108	210.0	180.0	86
ID	162.0	148.0	117	132	190.0	195.0	103
IL	35.0	35.0	129	143	45.0	50.0	111
IN	35.0	34.0	117	129	41.0	44.0	107
IA	130.0	120.0	141	142	183.0	170.0	93
KS	53.0	47.0	109	128	58.0	60.0	103
KY	23.0	25.0	117	112	27.0	28.0	104
MD	14.0	14.0	107		15.0		
MI	48.0	47.0	135	138	65.0	65.0	100
MN	86.0	83.0	169	157	145.0	130.0	90
MO	57.0	58.0	123	117	70.0	68.0	97
MT	190.0	180.0	124	131	235.0	235.0	100
NE	52.0	46.0	135	148	70.0	68.0	97
NV	46.0	44.0	91	100	42.0	44.0	105
N ENG ²	32.0	31.0	113	106	36.0	33.0	92
NM	89.0	83.0	73	80	65.0	66.0	102
NY	43.0	40.0	102	113	44.0	45.0	102
NC	16.0	17.0	94	82	15.0	14.0	93
ND	60.0	55.0	128	147	77.0	81.0	105
OH	75.0	77.0	136	136	102.0	105.0	103
OK	46.0	46.0	107	98	49.0	45.0	92
OR	120.0	121.0	131	129	157.0	156.0	99
PA	63.0	64.0	116	102	73.0	65.0	89
SD	220.0	205.0	120	127	265.0	260.0	98
TN	18.0	20.0	128	110	23.0	22.0	96
TX	590.0	520.0	61	74	360.0	385.0	107
UT	210.0	220.0	110	105	230.0	230.0	100
VA	50.0	48.0	120	131	60.0	63.0	105
WA	36.0	35.0	147	157	53.0	55.0	104
WV	24.0	23.0	125	113	30.0	26.0	87
WI	56.0	54.0	125	139	70.0	75.0	107
WY	260.0	260.0	100	98	260.0	255.0	98
Oth Sts ³	70.0	73.0	97	99	68.0	72.0	106
US	3,540.0	3,405.0	105	108	3,710.0	3,690.0	99

¹ Lamb crop is defined as lambs born in the Eastern States and lambs docked or branded in the Western States.

² N ENG includes CT, ME, MA, NH, RI, and VT.

³ Individual state estimates not available for states not shown, but are included in Other States. MD is included in Other States for 2009 for Lamb Crop and Lambs per 100 Ewes 1+ Jan 1.

**Market Sheep and Lambs: Number by Weight Group, State,
and United States, January 1, 2009**

State	Market Lambs					Market Sheep	Total Market Sheep and Lambs
	Under 65 Pounds	65 to 84 Pounds	85 to 105 Pounds	Over 105 Pounds	Total		
	<i>1,000 Head</i>	<i>1,000 Head</i>	<i>1,000 Head</i>	<i>1,000 Head</i>	<i>1,000 Head</i>	<i>1,000 Head</i>	<i>1,000 Head</i>
AZ	15.0	6.0	13.0	21.0	55.0	5.0	60.0
CA	110.0	25.0	50.0	120.0	305.0	10.0	315.0
CO	3.0	10.0	25.0	165.0	203.0	2.0	205.0
ID	1.0	1.0	7.0	22.0	31.0	1.0	32.0
IL	4.0	1.0	1.0	1.0	7.0	1.0	8.0
IN	3.5	0.6	1.4	0.5	6.0	1.0	7.0
IA	9.0	6.0	17.0	21.0	53.0	2.0	55.0
KS	12.0	1.0	3.0	3.0	19.0	4.0	23.0
KY	2.5	1.0	2.0	0.5	6.0	1.0	7.0
MD	1.4	0.9	0.6	0.1	3.0	3.0	6.0
MI	2.0	3.0	5.0	6.0	16.0	2.0	18.0
MN	8.0	8.0	10.0	11.0	37.0	1.0	38.0
MO	3.0	1.5	1.5	2.0	8.0	1.0	9.0
MT	1.0	4.0	13.0	4.0	22.0	3.0	25.0
NE	2.0	2.0	3.5	5.5	13.0	1.0	14.0
NV	1.0	2.0	2.0	4.0	9.0	1.0	10.0
N ENG ¹	2.2	1.2	1.0	0.6	5.0	2.0	7.0
NM	3.0	5.0	4.0	2.0	14.0	3.0	17.0
NY	6.0	2.0	2.0	1.0	11.0	1.0	12.0
NC	1.1	1.0	0.8	0.1	3.0	1.0	4.0
ND	3.0	4.5	8.0	4.5	20.0	1.0	21.0
OH	9.0	6.0	7.0	7.0	29.0	1.0	30.0
OK	8.0	3.0	2.0	3.0	16.0	1.0	17.0
OR	10.0	10.0	23.0	24.0	67.0	3.0	70.0
PA	6.0	4.0	2.0	1.0	13.0	3.0	16.0
SD	4.0	15.0	15.0	25.0	59.0	1.0	60.0
TN	3.7	0.7	0.7	0.9	6.0	1.0	7.0
TX	80.0	25.0	25.0	70.0	200.0	10.0	210.0
UT	2.0	2.0	10.0	13.0	27.0	3.0	30.0
VA	6.0	2.0	3.0	1.0	12.0	1.0	13.0
WA	5.0	1.0	1.5	1.5	9.0	1.0	10.0
WV	2.5	1.0	1.0	0.5	5.0		5.0
WI	4.0	3.0	4.0	4.0	15.0	2.0	17.0
WY	4.0	7.0	46.0	37.0	94.0	1.0	95.0
Oth Sts ²	12.0	4.0	3.0	2.0	21.0	6.0	27.0
US	349.9	170.4	314.0	584.7	1,419.0	81.0	1,500.0

¹ N ENG includes CT, ME, MA, NH, RI, and VT.

² Individual state estimates not available for states not shown, but are included in Other States.

**Market Sheep and Lambs: Number by Weight Group, State,
and United States, January 1, 2010**

State	Market Lambs					Market Sheep	Total Market Sheep and Lambs
	Under 65 Pounds	65 to 84 Pounds	85 to 105 Pounds	Over 105 Pounds	Total		
	<i>1,000 Head</i>	<i>1,000 Head</i>	<i>1,000 Head</i>	<i>1,000 Head</i>	<i>1,000 Head</i>	<i>1,000 Head</i>	<i>1,000 Head</i>
AZ	18.0	7.0	15.0	20.0	60.0	5.0	65.0
CA	120.0	20.0	50.0	90.0	280.0	10.0	290.0
CO	2.0	7.0	17.0	158.0	184.0	1.0	185.0
ID	1.0	1.0	7.0	30.0	39.0	1.0	40.0
IL	4.0	2.0	1.0	1.0	8.0	1.0	9.0
IN	3.3	1.0	0.4	0.3	5.0	1.0	6.0
IA	12.0	10.0	21.0	21.0	64.0	1.0	65.0
KS	14.0	3.0	3.0	6.0	26.0	4.0	30.0
KY	3.0	1.5	2.0	0.5	7.0	1.0	8.0
MI	4.0	5.0	4.0	4.0	17.0	2.0	19.0
MN	7.0	6.0	12.0	12.0	37.0	1.0	38.0
MO	3.5	1.5	1.5	0.5	7.0	1.0	8.0
MT	1.0	4.0	10.0	2.0	17.0	3.0	20.0
NE	3.0	1.5	5.5	5.0	15.0	1.0	16.0
NV	1.0	3.0	3.0	3.0	10.0	1.0	11.0
N ENG ¹	1.7	1.5	0.9	0.4	4.5	1.5	6.0
NM	3.0	5.0	3.0	2.0	13.0	2.0	15.0
NY	7.0	2.0	1.0	1.0	11.0	1.0	12.0
NC	2.0	1.0	0.7	0.3	4.0	1.0	5.0
ND	1.5	4.0	6.0	4.5	16.0	1.0	17.0
OH	7.0	6.0	7.0	4.0	24.0	1.0	25.0
OK	6.0	4.0	2.0	3.0	15.0	1.0	16.0
OR	11.0	13.0	22.0	22.0	68.0	3.0	71.0
PA	5.0	4.0	2.0	1.0	12.0	2.0	14.0
SD	4.0	13.0	14.0	43.0	74.0	1.0	75.0
TN	2.5	1.5	1.0	0.5	5.5	0.5	6.0
TX	75.0	20.0	15.0	60.0	170.0	10.0	180.0
UT	2.0	2.0	10.0	11.0	25.0	5.0	30.0
VA	8.0	4.0	3.0	1.5	16.5	1.5	18.0
WA	3.0	2.5	2.5	1.5	9.5	2.5	12.0
WV	1.5	1.0	1.0	0.5	4.0	1.0	5.0
WI	4.0	3.0	3.0	4.0	14.0	1.0	15.0
WY	4.0	6.0	25.5	32.0	67.5	7.5	75.0
Oth Sts ²	15.0	5.0	3.0	2.5	25.5	7.5	33.0
US	360.0	172.0	275.0	548.0	1,355.0	85.0	1,440.0

¹ N ENG includes CT, ME, MA, NH, RI, and VT.

² Individual state estimates not available for states not shown, but are included in Other States. MD is included in Other States for 2010.

**Wool: Number of Sheep and Lambs Shorn, Weight per Fleece,
and Production by State, and United States, 2008-2009**

State	Sheep Shorn		Weight per Fleece		Production	
	2008	2009	2008	2009	2008	2009
	<i>1,000 Head</i>	<i>1,000 Head</i>	<i>Pounds</i>	<i>Pounds</i>	<i>1,000 Pounds</i>	<i>1,000 Pounds</i>
AZ	120.0	125.0	6.3	6.0	750	750
CA	470.0	440.0	7.0	6.1	3,300	2,700
CO	380.0	300.0	6.8	7.3	2,600	2,200
ID	180.0	190.0	9.5	9.4	1,710	1,786
IL	48.0	53.0	7.5	7.5	360	395
IN	40.0	40.0	6.3	6.0	250	240
IA	195.0	195.0	6.1	5.9	1,180	1,150
KS	56.0	57.0	6.9	6.5	384	370
KY	13.0	12.0	6.5	6.7	85	80
MD	12.0		6.8		82	
MI	67.0	62.0	6.0	6.1	400	380
MN	140.0	130.0	6.6	6.4	930	830
MO	69.0	55.0	6.0	6.9	415	380
MT	230.0	230.0	9.3	9.3	2,150	2,150
NE	55.0	56.0	7.2	7.4	395	415
NV	48.0	53.0	9.9	9.7	475	515
N ENG ¹	37.0	37.0	7.1	6.9	263	255
NM	105.0	100.0	7.6	7.3	800	730
NY	40.0	40.0	6.5	6.5	260	260
NC	6.0	8.0	6.3	5.6	38	45
ND	70.0	75.0	8.3	8.5	580	640
OH	103.0	92.0	6.0	6.1	620	560
OK	40.0	30.0	5.5	5.0	220	150
OR	182.0	180.0	6.5	6.3	1,190	1,130
PA	60.0	54.0	6.7	6.5	400	350
SD	280.0	300.0	7.8	7.5	2,184	2,250
TN	18.0	17.0	5.8	5.9	105	100
TX	600.0	500.0	7.0	7.0	4,200	3,500
UT	255.0	260.0	9.2	9.0	2,350	2,350
VA	36.0	30.0	5.7	5.7	205	170
WA	36.0	48.0	7.8	7.3	280	350
WV	24.0	19.0	5.1	5.3	122	101
WI	62.0	64.0	7.1	7.3	440	470
WY	320.0	300.0	9.4	9.3	3,000	2,800
Oth Sts ²	37.0	45.0	6.5	6.9	240	310
US	4,434.0	4,197.0	7.4	7.4	32,963	30,862

¹ N ENG includes CT, ME, MA, NH, RI, and VT.

² Individual state estimates not available for states not shown, but are included in Other States. MD is included in Other States for 2009.

Wool: Price and Value by State and United States, 2008-2009

State	Price per Pound		Value ¹	
	2008	2009	2008	2009
	<i>Dollars</i>	<i>Dollars</i>	<i>1,000 Dollars</i>	<i>1,000 Dollars</i>
AZ	0.30	0.25	225	188
CA	1.10	0.85	3,630	2,295
CO	1.12	0.82	2,912	1,804
ID	1.14	0.83	1,949	1,482
IL	0.36	0.31	130	122
IN	0.18	0.23	45	55
IA	0.35	0.27	413	311
KS	0.65	0.37	250	137
KY	0.45	0.30	38	24
MD	0.55		45	
MI	0.34	0.43	136	163
MN	0.36	0.29	335	241
MO	0.57	0.40	237	152
MT	1.40	1.10	3,010	2,365
NE	0.41	0.40	162	166
NV	1.35	1.10	641	567
N ENG ²	0.55	0.55	145	140
NM	1.70	1.00	1,360	730
NY	0.30	0.30	78	78
NC	0.40	0.50	15	23
ND	0.80	0.70	464	448
OH	0.37	0.28	229	157
OK	0.40	0.40	88	60
OR	0.68	0.66	809	746
PA	0.31	0.33	124	116
SD	0.91	0.82	1,987	1,845
TN	0.53	0.43	56	43
TX	1.16	1.04	4,872	3,640
UT	1.20	0.80	2,820	1,880
VA	0.50	0.60	103	102
WA	1.35	1.35	378	473
WV	0.44	0.41	54	41
WI	0.45	0.50	198	235
WY	1.46	1.16	4,380	3,248
Oth Sts ³	0.70	1.00	168	310
US ⁴	0.99	0.79	32,486	24,387

¹ Production multiplied by marketing year average price. U.S. value is the summation of State values.

² N ENG includes CT, ME, MA, NH, RI, and VT.

³ Individual state estimates not available for states not shown, but are included in Other States. MD is included in Other States for 2009.

⁴ U.S. Value may not add due to rounding.

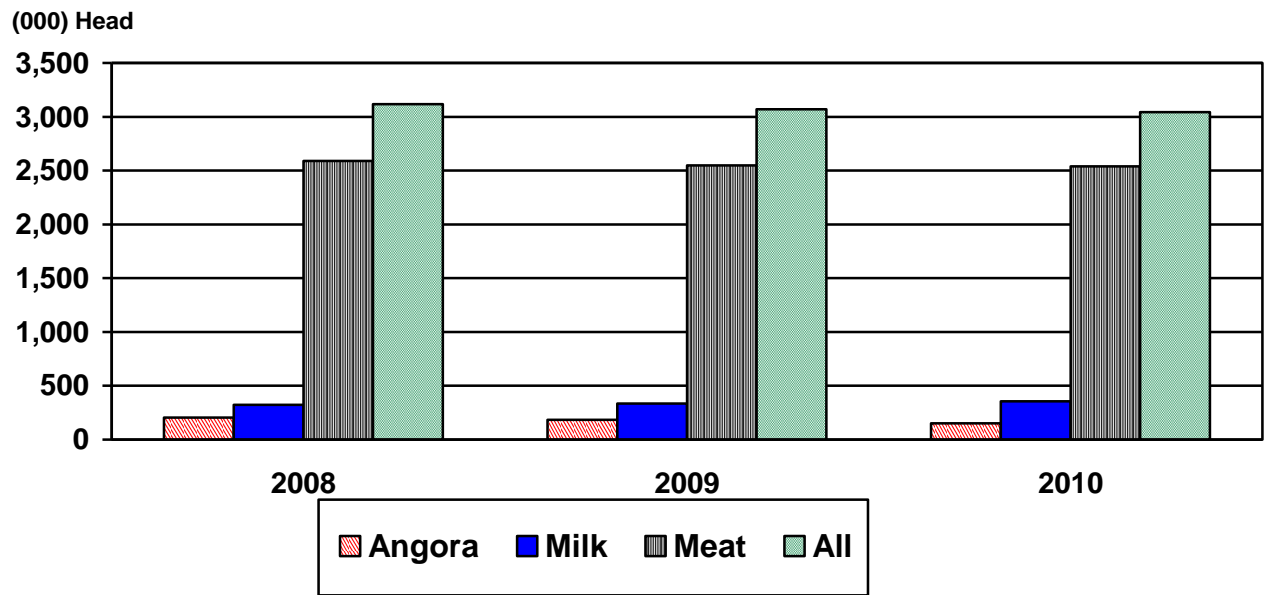
**All Goats: Number by Class, United States,
January 1, 2009-2010 ¹**

Class	2009	2010	2010 as % of 2009
	<i>Head</i>	<i>Head</i>	<i>Percent</i>
All Goats	3,069,000	3,043,000	99
Breeding All Goats	2,543,000	2,525,000	99
Replacement Kids - Under One Year	463,000	467,000	101
Does - One Year Old and Older	1,895,000	1,873,000	99
Bucks - One Year Old and Older	185,000	185,000	100
All, Market Goats & Kids	526,000	518,000	98
Kid Crop ²	1,963,000	1,944,000	99

¹ May not add due to rounding.

² Kid crop refers to kids born the previous year.

U.S. Goat Inventory January 1



**Angora Goats: Number by Class, United States,
January 1, 2009-2010 ¹**

Class	2009	2010	2010 as % of 2009
	<i>Head</i>	<i>Head</i>	<i>Percent</i>
All Angora Goats	185,000	150,000	81
Breeding Angora Goats	166,000	132,000	80
Replacement Kids - Under One Year	24,000	21,000	88
Does - One Year Old and Older	132,000	103,000	78
Bucks - One Year Old and Older	10,000	8,000	80
Angora, Market Goats & Kids	19,000	18,000	95
Kid Crop ²	96,000	80,000	83

¹ May not add due to rounding.

² Kid crop refers to kids born the previous year.

**Milk Goats: Number by Class, United States,
January 1, 2009-2010 ¹**

Class	2009	2010	2010 as % of 2009
	<i>Head</i>	<i>Head</i>	<i>Percent</i>
All Milk Goats	335,000	355,000	106
Breeding Milk Goats	302,000	320,000	106
Replacement Kids - Under One Year	66,000	69,000	105
Does - One Year Old and Older	215,000	228,000	106
Bucks - One Year Old and Older	21,000	23,000	110
Milk, Market Goats & Kids	33,000	35,000	106
Kid Crop ²	240,000	252,000	105

¹ May not add due to rounding.

² Kid crop refers to kids born the previous year.

**Meat and Other Goats: Number by Class, United States,
January 1, 2009-2010 ¹**

Class	2009	2010	2010 as % of 2009
	<i>Head</i>	<i>Head</i>	<i>Percent</i>
All Meat & Other Goats	2,549,000	2,538,000	100
Breeding Meat & Other Goats	2,075,000	2,073,000	100
Replacement Kids - Under One Year	373,000	377,000	101
Does - One Year Old and Older	1,548,000	1,542,000	100
Bucks - One Year Old and Older	154,000	154,000	100
Meat & Other, Market Goats & Kids	474,000	465,000	98
Kid Crop ²	1,627,000	1,612,000	99

¹ May not add due to rounding.

² Kid crop refers to kids born the previous year.

Angora Goats: Number by State and United States, 2009-2010

State	2009		2010	
	<i>Head</i>		<i>Head</i>	
AZ		24,000		16,000
CA		4,000		3,500
CO		1,000		
MN		1,000		1,000
MO		1,500		1,400
N ENG ¹		1,250		1,150
NM		12,500		10,500
OH		1,400		1,300
OK		1,000		
OR		1,800		1,900
PA		1,100		
TX		120,000		95,000
VA				1,400
WA		1,000		1,000
WI		1,000		1,000
Oth Sts ^{2 3}		12,450		14,850
US		185,000		150,000

¹ N ENG includes CT, ME, MA, NH, RI, and VT.

² Individual state estimates not available for states not shown, but are included in Other States.

³ CO, OK, and PA are included in Other States for 2010. VA is included in Other States for 2009.

**Mohair: Production, Price, and Value by Selected States,
United States, 2008-2009**

State	Goats Clipped		Average Clip per Goat		Production		Price per Pound		Value ¹	
	2008	2009	2008	2009	2008	2009	2008	2009	2008	2009
	<i>Head</i>	<i>Head</i>	<i>Pounds</i>	<i>Pounds</i>	<i>1,000 Pounds</i>	<i>1,000 Pounds</i>	<i>Dollars</i>	<i>Dollars</i>	<i>1,000 Dollars</i>	<i>1,000 Dollars</i>
AZ	21,000	14,000	5.2	5.7	110	80	1.00	0.55	110	44
CA	3,000	2,500	6.0	6.8	18	17	4.00	3.50	72	60
NM	12,500	11,500	6.1	6.5	76	75	4.00	2.50	304	188
TX	130,000	105,000	6.3	6.4	820	670	3.80	3.10	3,116	2,077
Oth Sts ²	27,000	27,500	5.9	6.2	160	170	1.95	1.90	312	323
US	193,500	160,500	6.1	6.3	1,184	1,012	3.31	2.66	3,914	2,692

¹ Production multiplied by marketing year average price. U.S. value is summation of State values.

² Individual state estimates not available for states not shown, but are included in Other States.

Milk Goats: Number by State and United States, 2009-2010

State	2009	2010
	<i>Head</i>	<i>Head</i>
AL	4,500	4,200
AZ	2,000	2,000
AR	4,900	4,400
CA	37,000	38,000
CO	8,300	8,400
FL	6,000	5,000
GA	4,500	3,000
ID	2,500	2,800
IL	5,500	4,700
IN	10,500	11,800
IA	24,500	29,500
KS	4,500	3,800
KY	7,000	6,500
LA	1,200	1,100
MD	2,800	2,400
MI	9,100	10,900
MN	11,500	13,000
MS	2,800	2,900
MO	9,000	9,000
MT	1,900	2,700
NE	1,900	3,100
NV	4,300	4,600
N ENG ¹	10,500	13,500
NJ	1,700	2,000
NM	2,000	3,100
NY	13,400	13,000
NC	9,500	8,000
ND	1,000	
OH	9,000	8,000
OK	8,000	8,300
OR	9,200	9,100
PA	14,500	17,000
SC	3,000	2,900
SD	1,500	2,000
TN	5,800	6,400
TX	20,000	20,000
UT	2,600	2,700
VA	4,500	5,800
WA	7,100	7,300
WV	2,200	2,000
WI	40,000	46,000
WY	1,800	1,700
Oth Sts ^{2 3}	1,500	2,400
US	335,000	355,000

¹ N ENG includes CT, ME, MA, NH, RI, and VT.

² Individual state estimates not available for states not shown, but are included in Other States.

³ ND is included in Other States for 2010.

Meat and Other Goats: Number by State and United States, 2009-2010

State	2009	2010
	<i>Head</i>	<i>Head</i>
AL	65,000	60,000
AZ	14,000	25,000
AR	47,000	53,000
CA	95,000	93,000
CO	34,000	38,000
FL	55,000	60,000
GA	80,500	79,000
HI	8,400	9,500
ID	12,000	13,000
IL	24,500	22,500
IN	32,000	33,500
IA	32,500	25,000
KS	50,000	42,000
KY	79,000	79,000
LA	20,000	20,500
MD	13,600	12,500
MI	13,500	16,000
MN	20,000	22,000
MS	27,000	28,000
MO	86,500	84,600
MT	9,000	9,000
NE	27,000	20,000
NV	6,100	6,400
N ENG ¹	12,100	13,000
NJ	8,000	7,200
NM	18,000	21,000
NY	27,000	35,000
NC	86,000	95,000
ND	2,800	2,700
OH	55,500	50,000
OK	105,000	90,000
OR	28,000	30,000
PA	42,000	42,000
SC	38,000	39,100
SD	7,500	6,000
TN	134,000	125,000
TX	980,000	990,000
UT	14,000	13,000
VA	62,000	52,000
WA	27,000	22,000
WV	23,500	22,500
WI	18,000	21,000
WY	6,000	7,000
Oth Sts ²	3,000	3,000
US	2,549,000	2,538,000

¹ N ENG includes CT, ME, MA, NH, RI, and VT.

² Individual state estimates not available for states not shown, but are included in Other States.

Reliability of January 1 Sheep, Lamb, and Goat Estimates

Survey Procedures: A random sample of U.S. producers was surveyed to provide data for these estimates. Survey procedures ensured that all sheep and goat producers, regardless of size, had a chance to be included in the survey. Large producers were sampled more heavily than small operations. About 23,000 operators were contacted during the first half of January by mail, telephone and face-to-face personal interview and 81 percent of the reports were usable. Regardless of when operators responded, they were asked to report inventories as of January 1.

Estimation Procedures: These sheep and goat estimates were prepared by the Agricultural Statistics Board. National and State survey data were reviewed for reasonableness and with estimates from past years. A projected balance sheet for calendar year 2009 was also used. The balance sheet begins with the previous inventory estimate, adds estimates of births and imports, and subtracts estimates of slaughter, exports and deaths. This indicated ending inventory level is compared with the Agricultural Statistics Board estimate for reasonableness.

Revision Policy: Revisions to previous estimates are made to improve the current estimate. Previous year estimates are subject to revision when current estimates are made. Estimates will also be reviewed after data from the Department of Agriculture's five-year Census of Agriculture are available. No revisions will be made after that date.

Reliability: Since all operations raising sheep and goats are not included in the sample, survey estimates are subject to sampling variability. Survey results are also subject to non-sampling errors, such as omissions, duplications, and mistakes in reporting, recording, and processing the data. The effects of these errors cannot be measured directly. They are minimized through rigid quality controls in the data collection process and through a careful review of all reported data for consistency and reasonableness.

To assist users in evaluating reliability of the estimates in this report, the "**Root Mean Square Error**" is shown for selected sheep items in the following table. The "Root Mean Square Error" is a statistical measure based on past performance and is computed using the differences between the first and latest estimates. The "Root Mean Square Error" for sheep and lamb inventory estimates over the past 10 years is 0.8 percent. This means that chances are 2 out of 3 that the final estimate will not be above or below the current estimate of 5.63 million head by more than 0.8 percent. Chances are 9 out of 10 that the difference will not exceed 1.4 percent.

The "Root Mean Square Error" for sheep shorn over the past 10 years is 0.8 percent. This means that chances are 2 out of 3 that the final estimate will not be above or below the current estimate of 4.20 million head by more than 0.8 percent. Chances are 9 out of 10 that the difference will not exceed 1.6 percent.

Also shown in the table is a 10-year record showing the range between the first inventory estimate and the latest estimate. Using estimates for All Sheep and Lambs as an example, changes between the first inventory estimate and the latest estimate during the past 10 years have averaged 33,000 head, ranging from 0 to 105,000 head. The initial inventory estimate of All Sheep and Lambs has been below the latest estimate 7 times and above the latest estimate 1 time in the last 10 years.

For Sheep and Lambs Shorn, changes between the first inventory estimate and the latest estimate during the past 10 years have averaged 30,000 head, ranging from 0 to 108,000 head. The initial inventory estimate of Sheep and Lambs Shorn has been below the latest estimate 2 times and above 7 times in the last 10 years.

Reliability of U.S. December 1 Sheep and Lamb Estimates ¹

Item	Root Mean Square Error	90% Confidence Level		Difference Between First and Final Estimates ¹			Number of Years	
		Percent	(000) Head	Average	Smallest	Largest	First Above Final	First Below Final
All Sheep & Lambs	0.8	1.4	79	33	0	105	7	1
Breeding Sheep	0.8	1.5	63	28	0	74	7	2
Lamb Crop	2.1	3.9	144	69	0	155	5	4
Sheep Shorn	0.8	1.6	67	30	0	108	7	2
Wool Prod	0.9	1.7	525	235	0	895	8	1

¹ Based on data for the past 10 years.

Information Contacts

Listed below are the commodity specialists in the Livestock Branch of the National Agricultural Statistics Service to contact for additional information.

Dan Kerestes, Chief, Livestock Branch (202) 720-3570

Livestock Section

Scott Hollis, Head, Livestock Section (202) 690-2424
 Jim Collom - Dairy Products (202) 690-3236
 Joe Gaynor - Dairy Products Prices (202) 690-2168
 Jason Hardegree - Cattle, Cattle on Feed (202) 720-3040
 Sherry Bertramsen - Livestock Slaughter (515) 284-4340
 Everett Olbert - Sheep and Goats (202) 720-4751
 Mike Miller - Milk Production and Milk Cows (202) 720-3278
 Nick Streff - Hogs and Pigs (202) 720-3106

ACCESS TO REPORTS!!

For your convenience, there are several ways to obtain NASS reports, data products, and services:

INTERNET ACCESS

All NASS reports are available free of charge. For free access, connect to the Internet and go to the NASS Home Page at: www.nass.usda.gov.

E-MAIL SUBSCRIPTION

All NASS reports are available by subscription free of charge direct to your e-mail address. Starting with the NASS Home Page at www.nass.usda.gov, under the right navigation, *Receive reports by Email*, click on **National** or **State**. Follow the instructions on the screen.

PRINTED REPORTS OR DATA PRODUCTS

CALL OUR TOLL-FREE ORDER DESK: 800-999-6779 (U.S. and Canada)
Other areas, please call 703-605-6220 FAX: 703-605-6880
(Visa, MasterCard, check, or money order acceptable for payment.)

ASSISTANCE

For **assistance** with general agricultural statistics or further information about NASS or its products or services, contact the **Agricultural Statistics Hotline** at **800-727-9540**, 7:30 a.m. to 4:00 p.m. ET, or e-mail: nass@nass.usda.gov.

The U.S. Department of Agriculture (USDA) prohibits discrimination in all its programs and activities on the basis of race, color, national origin, age, disability, and where applicable, sex, marital status, familial status, parental status, religion, sexual orientation, genetic information, political beliefs, reprisal, or because all or a part of an individual's income is derived from any public assistance program. (Not all prohibited bases apply to all programs.) Persons with disabilities who require alternative means for communication of program information (Braille, large print, audiotape, etc.) should contact USDA's TARGET Center at (202) 720-2600 (voice and TDD).

To file a complaint of discrimination, write to USDA, Director, Office of Civil Rights, 1400 Independence Avenue, S.W., Washington, D.C. 20250-9410, or call (800) 795-3272 (voice) or (202) 720-6382 (TDD). USDA is an equal opportunity provider and employer.



Sustainable Agriculture

The Key to Health and Prosperity

February 18 – 19, 2010

Crystal Gateway Marriott Hotel
1700 Jefferson Davis Highway
Arlington, Virginia

www.usda.gov/oce/forum

Early Bird Registration \$350 until January 15, 2010 * \$375 after January 15

Topical Sessions Cover:

- *Rural Communities
- *Nutrition
- *Risk Management
- *Conservation
- *Organics & Sustainability
- *Climate Change
- *Food Security & Safety
- *World Commerce
- * Energy

and the traditional Food Price, Farm Income, and Commodity Outlook Sessions