

# Quarterly Hogs and Pigs

Released June 25, 2010, by the National Agricultural Statistics Service (NASS), Agricultural Statistics Board, U.S. Department of Agriculture. For information on *Quarterly Hogs and Pigs* call Nick Streff at 202-720-3106, office hours 7:30 a.m. to 4:00 p.m. ET.

## U.S. Hog Inventory down 4 Percent

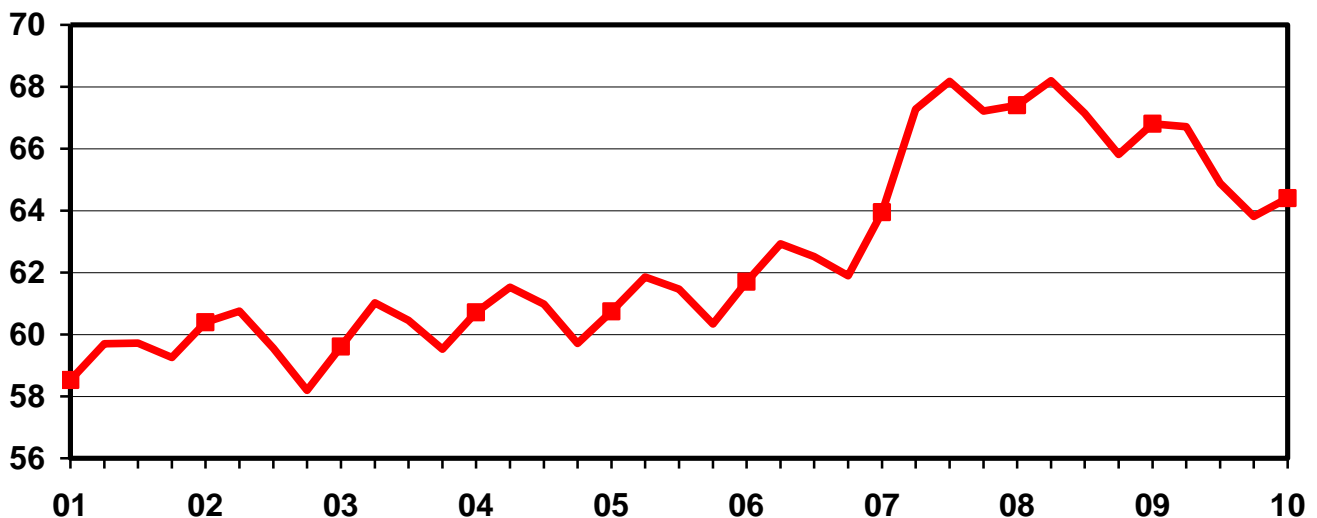
**U.S. inventory** of all hogs and pigs on June 1, 2010 was 64.4 million head. This was down 4 percent from June 1, 2009 but up 1 percent from March 1, 2010.

**Breeding inventory**, at 5.79 million head, was down 3 percent from last year but up slightly from the previous quarter. **Market hog inventory**, at 58.6 million head, was down 4 percent from last year but up 1 percent from last quarter.

**The March-May 2010 pig crop**, at 28.2 million head, was down 3 percent from 2009 and down 2 percent from 2008. Sows farrowing during this period totaled 2.87 million head, down 5 percent from 2009 and down 6 percent from 2008. The sows farrowed during this quarter represented 50 percent of the breeding herd. The average pigs saved per litter was a record high 9.81 for the March-May 2010 period, compared to 9.61 last year. Pigs saved per litter by size of operation ranged from 7.70 for operations with 1-99 hogs and pigs to 9.90 for operations with more than 5,000 hogs and pigs.

## U.S. Quarterly Hogs and Pigs Inventory June 1

Million Head



**U.S. hog producers** intend to have 2.89 million sows farrow during the June-August 2010 quarter, down 2 percent from the actual farrowings during the same period in 2009 and down 6 percent from 2008. Intended farrowings for September-November 2010, at 2.90 million sows, are down 1 percent from 2009 and down 4 percent from 2008.

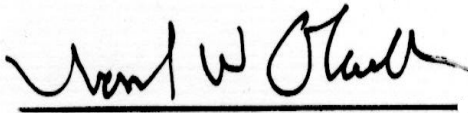
The total number of hogs under contract owned by operations with over 5,000 head, but raised by contractees, accounted for 44 percent of the total U.S. hog inventory, down from 46 percent last year.

### Revisions

All inventory and pig crop estimates for June 2009 through March 2010 were reviewed using slaughter, death loss and current import and export data. Based on this review, adjustments of less than one percent were made to the December 2009 total inventory and March 2010 total inventory. An adjustment of two percent was made to the September-November 2009 pig crop.

---

This report was approved on June 25, 2010.



Acting Secretary of  
Agriculture  
Joseph W. Glauber



Agricultural Statistics Board  
Chairperson  
Hubert Hamer

## Contents

|  | <b>Page</b> |
|--|-------------|
| Quarterly U.S. Inventory by Class and Weight Group, 2009-2010 .....                | 1           |
| Quarterly U.S. Sows Farrowed, Pig Crop, and Pigs per Litter, 2008-2010 .....       | 2           |
| Quarterly U.S. Pigs per Litter by Size of Operation, 2009-2010 .....               | 2           |
| Hogs and Pigs: Inventory by State and U.S., 2008-2010                              |             |
| March 1 .....  | 5           |
| June 1 .....   | 7           |
| September 1 .....  | 9           |
| December 1 .....   | 11          |
| Farrowings: Number of Sows, Pigs per Litter, Pig Crop by State and U.S.; 2008-2010 |             |
| December-February .....  | 13          |
| March-May .....  | 14          |
| June-August .....  | 15          |
| September-November .....   | 16          |
| Monthly U.S. Farrowings, December-November 2009-2010 .....                         | 17          |
| Reliability Statement .....  | 18          |
| Information Contacts .....   | 19          |

**Hogs and Pigs: Inventory Number by Class, Weight Group,  
and Quarter, United States, 2009-2010**

| Item                                     | 2009              | 2010              | 2010<br>as a %<br>2009 |
|--|-------------------|-------------------|------------------------|
|  | <i>1,000 Head</i> | <i>1,000 Head</i> | <i>Percent</i>         |
| March 1 Inventory <sup>1</sup>           |                   |                   |                        |
| All Hogs and Pigs                        | 65,819            | 63,818            | 97                     |
| Kept for Breeding                        | 5,992             | 5,760             | 96                     |
| Market                                   | 59,828            | 58,058            | 97                     |
| Market Hogs and Pigs<br>by Weight Groups |                   |                   |                        |
| Under 50 Pounds                          | 19,809            | 19,017            | 96                     |
| 50-119 Pounds                            | 16,426            | 15,993            | 97                     |
| 120-179 Pounds                           | 12,732            | 12,307            | 97                     |
| 180 Pounds and Over                      | 10,862            | 10,742            | 99                     |
| June 1 Inventory <sup>1</sup>            |                   |                   |                        |
| All Hogs and Pigs                        | 66,809            | 64,400            | 96                     |
| Kept for Breeding                        | 5,968             | 5,788             | 97                     |
| Market                                   | 60,842            | 58,612            | 96                     |
| Market Hogs and Pigs<br>by Weight Groups |                   |                   |                        |
| Under 50 Pounds                          | 19,554            | 18,879            | 97                     |
| 50-119 Pounds                            | 17,838            | 16,877            | 95                     |
| 120-179 Pounds                           | 12,604            | 12,279            | 97                     |
| 180 Pounds and Over                      | 10,847            | 10,578            | 98                     |
| September 1 Inventory <sup>1</sup>       |                   |                   |                        |
| All Hogs and Pigs                        | 66,716            |                   |                        |
| Kept for Breeding                        | 5,875             |                   |                        |
| Market                                   | 60,842            |                   |                        |
| Market Hogs and Pigs<br>by Weight Groups |                   |                   |                        |
| Under 50 Pounds                          | 19,758            |                   |                        |
| 50-119 Pounds                            | 17,148            |                   |                        |
| 120-179 Pounds                           | 12,684            |                   |                        |
| 180 Pounds and Over                      | 11,253            |                   |                        |
| December 1 Inventory <sup>1</sup>        |                   |                   |                        |
| All Hogs and Pigs                        | 64,887            |                   |                        |
| Kept for Breeding                        | 5,850             |                   |                        |
| Market                                   | 59,037            |                   |                        |
| Market Hogs and Pigs<br>by Weight Groups |                   |                   |                        |
| Under 50 Pounds                          | 18,705            |                   |                        |
| 50-119 Pounds                            | 16,782            |                   |                        |
| 120-179 Pounds                           | 12,299            |                   |                        |
| 180 Pounds and Over                      | 11,252            |                   |                        |

<sup>1</sup> May not add due to rounding.

**Farrowings: Number of Sows, Pig Crop, and Pigs per Litter,  
United States, 2008-2010**

| Item                   | 2008              | 2009              | 2010              | 2010 as % of   |                |
|------------------------|-------------------|-------------------|-------------------|----------------|----------------|
|                        |                   |                   |                   | 2008           | 2009           |
|                        | <i>1,000 Head</i> | <i>1,000 Head</i> | <i>1,000 Head</i> | <i>Percent</i> | <i>Percent</i> |
| Sows Farrowing         |                   |                   |                   |                |                |
| Dec-Feb <sup>1</sup>   | 3,071             | 3,011             | 2,901             | 94             | 96             |
| Mar-May                | 3,052             | 3,018             | 2,875             | 94             | 95             |
| Dec-May <sup>1 2</sup> | 6,123             | 6,029             | 5,776             | 94             | 96             |
| Jun-Aug <sup>3</sup>   | 3,075             | 2,959             | 2,890             | 94             | 98             |
| Sep-Nov <sup>3</sup>   | 3,028             | 2,915             | 2,899             | 96             | 99             |
| Jun-Nov <sup>2 3</sup> | 6,103             | 5,874             | 5,790             | 95             | 99             |
| Pig Crop               |                   |                   |                   |                |                |
| Dec-Feb <sup>1</sup>   | 28,388            | 28,552            | 27,873            | 98             | 98             |
| Mar-May                | 28,631            | 29,012            | 28,199            | 98             | 97             |
| Dec-May <sup>1 2</sup> | 57,019            | 57,564            | 56,072            | 98             | 97             |
| Jun-Aug                | 29,240            | 28,718            |                   |                |                |
| Sep-Nov                | 28,771            | 28,260            |                   |                |                |
| Jun-Nov <sup>2</sup>   | 58,011            | 56,978            |                   |                |                |
|                        | <i>Number</i>     | <i>Number</i>     | <i>Number</i>     | <i>Percent</i> | <i>Percent</i> |
| Pigs per Litter        |                   |                   |                   |                |                |
| Dec-Feb <sup>1</sup>   | 9.24              | 9.48              | 9.61              | 104            | 101            |
| Mar-May                | 9.38              | 9.61              | 9.81              | 105            | 102            |
| Dec-May <sup>1</sup>   | 9.31              | 9.55              | 9.71              | 104            | 102            |
| Jun-Aug                | 9.51              | 9.70              |                   |                |                |
| Sep-Nov                | 9.50              | 9.70              |                   |                |                |
| Jun-Nov                | 9.51              | 9.70              |                   |                |                |

<sup>1</sup> December preceding year.

<sup>2</sup> May not add due to rounding.

<sup>3</sup> Intentions for 2010.

**Pigs per Litter: By Size of Operation, United States, 2009-2010**

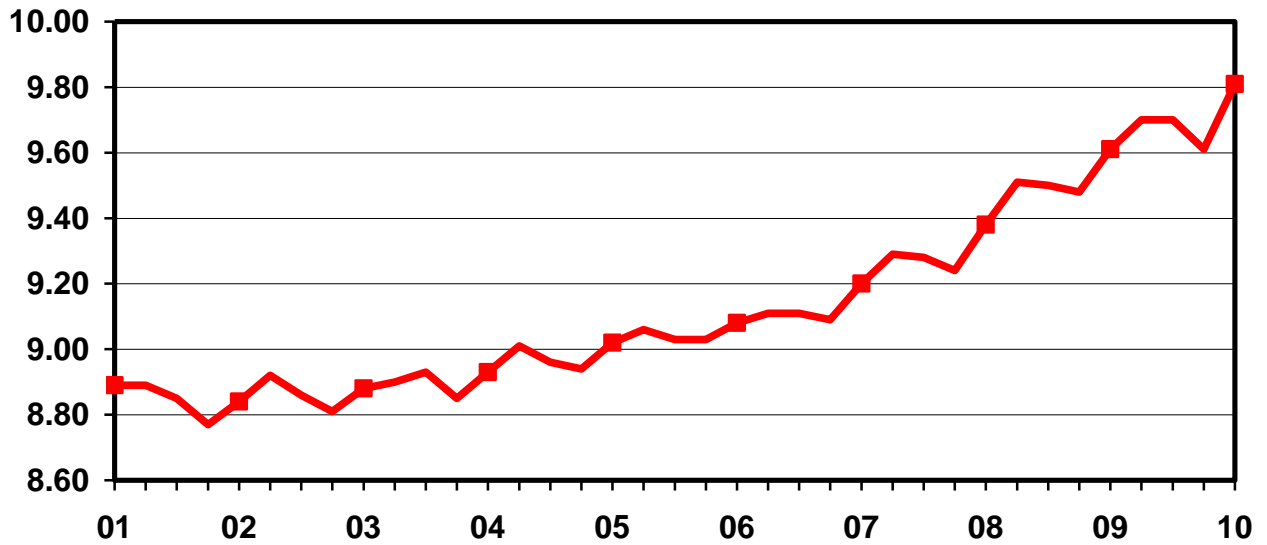
| Pig Crop             | Pigs per Litter on Operations Having <sup>1</sup> |                 |                 |                     |                     |                |
|----------------------|---|-----------------|-----------------|---------------------|---------------------|----------------|
|                      | 1-99<br>Head                                      | 100-499<br>Head | 500-999<br>Head | 1,000-1,999<br>Head | 2,000-4,999<br>Head | 5,000+<br>Head |
|                      | <i>Number</i>                                     | <i>Number</i>   | <i>Number</i>   | <i>Number</i>       | <i>Number</i>       | <i>Number</i>  |
| 2009                 |   |                 |                 |                     |                     |                |
| Dec-Feb <sup>2</sup> | 7.30  | 8.10            | 8.40            | 9.00                | 9.40                | 9.50           |
| Mar-May              | 7.40  | 8.10            | 8.50            | 9.10                | 9.60                | 9.70           |
| Jun-Aug              | 7.40  | 8.20            | 8.60            | 9.10                | 9.60                | 9.80           |
| Sep-Nov              | 7.40  | 8.10            | 8.50            | 9.20                | 9.60                | 9.80           |
| 2010                 |   |                 |                 |                     |                     |                |
| Dec-Feb <sup>2</sup> | 7.40  | 8.10            | 8.50            | 9.20                | 9.60                | 9.70           |
| Mar-May              | 7.70  | 8.40            | 8.60            | 9.40                | 9.70                | 9.90           |
| Jun-Aug              |   |                 |                 |                     |                     |                |
| Sep-Nov              |   |                 |                 |                     |                     |                |

<sup>1</sup> Pigs per litter rounded to the nearest tenth.

<sup>2</sup> December preceding year.

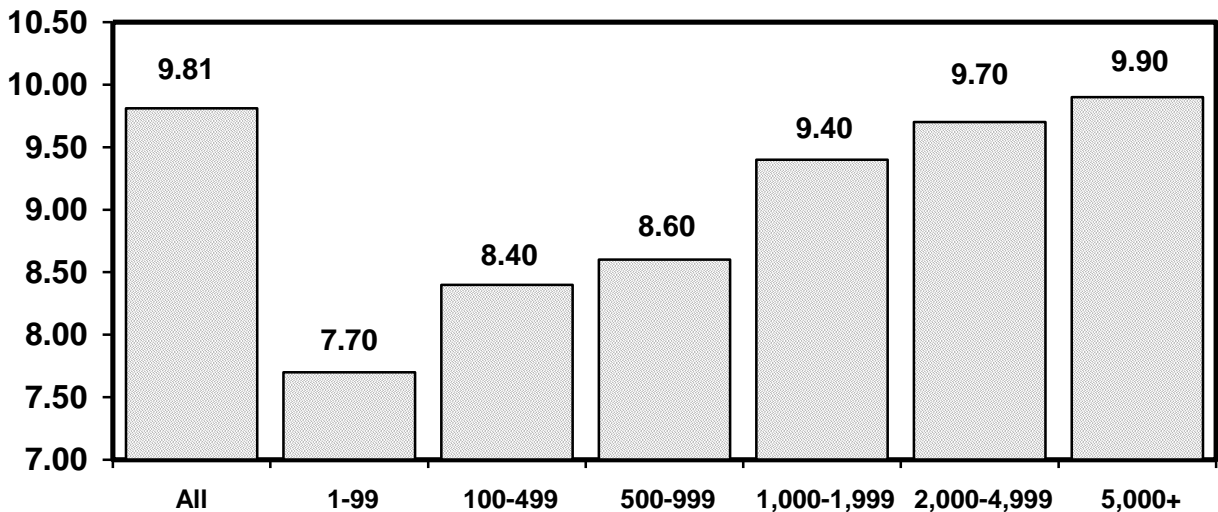
## U.S. Quarterly Litter Rate March-May

Number Head



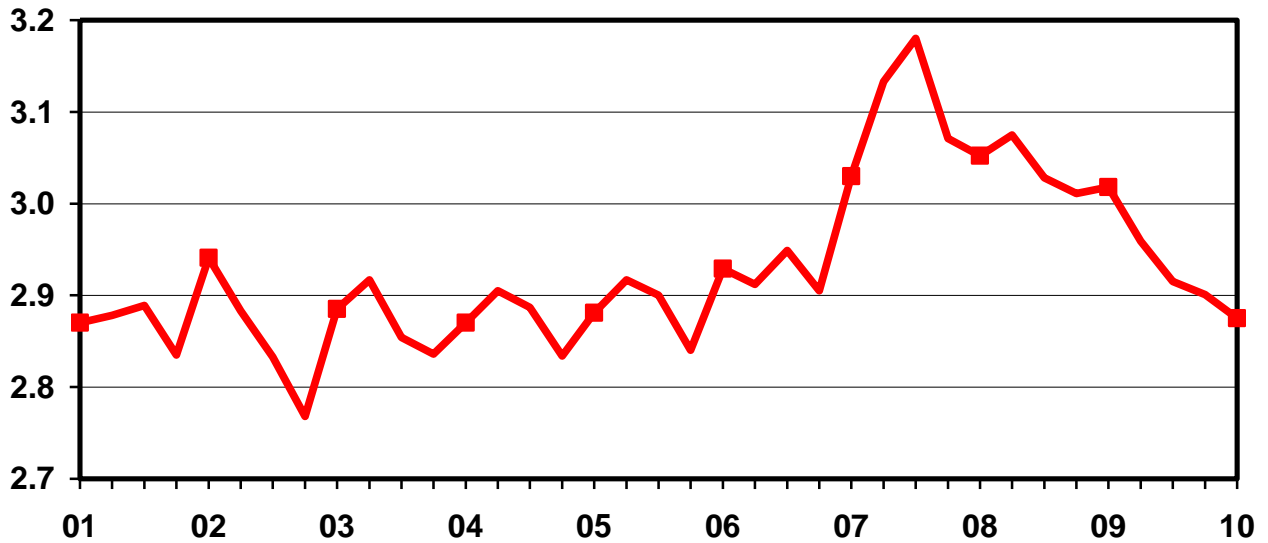
## U.S. Pigs per Litter By Size of Operation, March-May 2010

Number Head



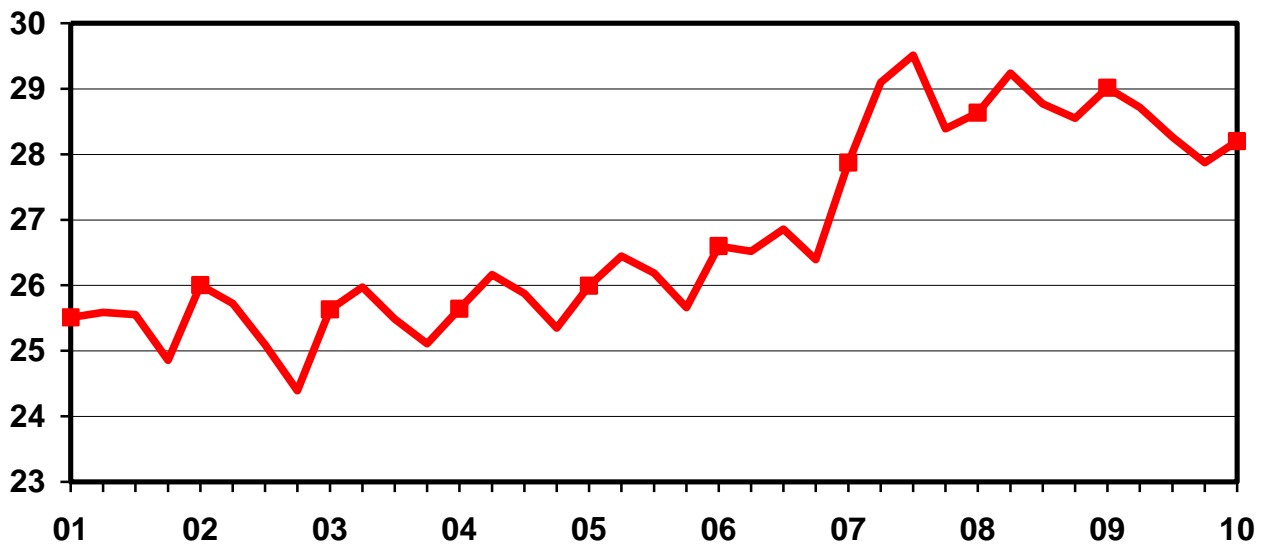
## U.S. Quarterly Sows Farrowed March-May

Million Head



## U.S. Quarterly Pig Crop March-May

Million Head



**Hogs and Pigs: Breeding, Market, and Total Inventory  
by State and United States, March 1, 2009-2010**

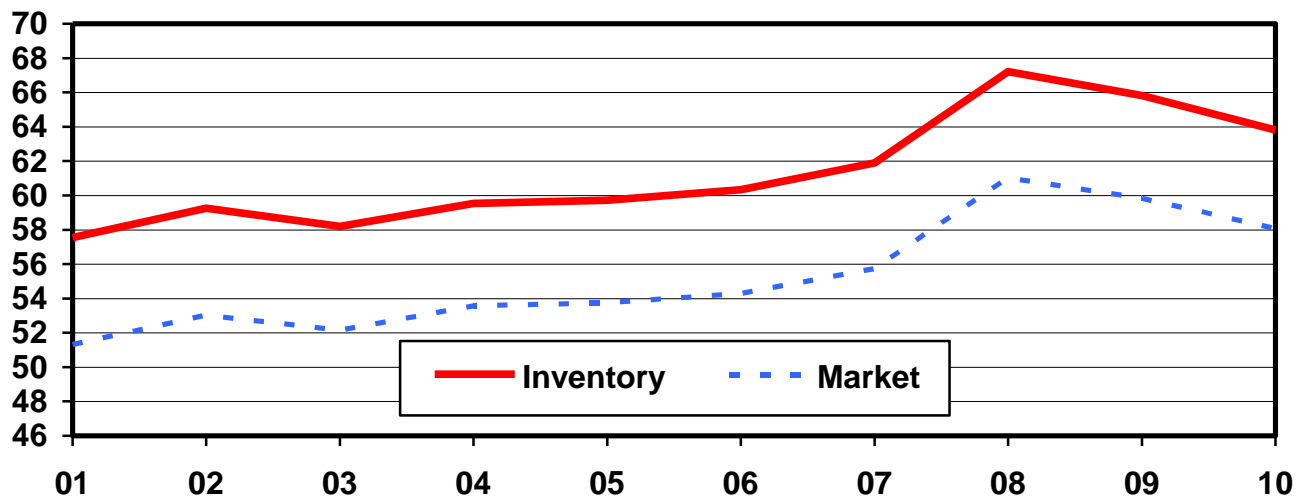
| State                | Breeding          |                   |                | Market            |                   |                | Total             |                   |                |
|----------------------|-------------------|-------------------|----------------|-------------------|-------------------|----------------|-------------------|-------------------|----------------|
|                      | 2009              | 2010              |                | 2009              | 2010              |                | 2009              | 2010              |                |
|                      |                   | Number            | as % of 2009   |                   | Number            | as % of 2009   |                   | Number            | as % of 2009   |
|                      | <i>1,000 Head</i> | <i>1,000 Head</i> | <i>Percent</i> | <i>1,000 Head</i> | <i>1,000 Head</i> | <i>Percent</i> | <i>1,000 Head</i> | <i>1,000 Head</i> | <i>Percent</i> |
| CO                   | 150               | 150               | 100            | 590               | 580               | 98             | 740               | 730               | 99             |
| IL                   | 480               | 480               | 100            | 3,820             | 3,870             | 101            | 4,300             | 4,350             | 101            |
| IN                   | 270               | 290               | 107            | 3,280             | 3,260             | 99             | 3,550             | 3,550             | 100            |
| IA                   | 1,040             | 1,010             | 97             | 18,460            | 17,790            | 96             | 19,500            | 18,800            | 96             |
| KS                   | 165               | 180               | 109            | 1,655             | 1,620             | 98             | 1,820             | 1,800             | 99             |
| MI                   | 110               | 110               | 100            | 930               | 960               | 103            | 1,040             | 1,070             | 103            |
| MN                   | 580               | 550               | 95             | 6,820             | 6,650             | 98             | 7,400             | 7,200             | 97             |
| MO                   | 365               | 355               | 97             | 2,585             | 2,645             | 102            | 2,950             | 3,000             | 102            |
| NE                   | 385               | 365               | 95             | 2,815             | 2,635             | 94             | 3,200             | 3,000             | 94             |
| NC                   | 980               | 880               | 90             | 8,420             | 8,220             | 98             | 9,400             | 9,100             | 97             |
| OH                   | 170               | 170               | 100            | 1,810             | 1,870             | 103            | 1,980             | 2,040             | 103            |
| OK                   | 400               | 410               | 103            | 1,940             | 1,870             | 96             | 2,340             | 2,280             | 97             |
| PA                   | 90                | 95                | 106            | 1,020             | 1,025             | 100            | 1,110             | 1,120             | 101            |
| SD                   | 150               | 150               | 100            | 1,160             | 1,030             | 89             | 1,310             | 1,180             | 90             |
| TX                   | 95                | 55                | 58             | 995               | 595               | 60             | 1,090             | 650               | 60             |
| UT                   | 75                | 75                | 100            | 625               | 625               | 100            | 700               | 700               | 100            |
| Oth Sts <sup>1</sup> | 487               | 435               | 89             | 2,903             | 2,813             | 97             | 3,389             | 3,248             | 96             |
| US <sup>2</sup>      | 5,992             | 5,760             | 96             | 59,828            | 58,058            | 97             | 65,819            | 63,818            | 97             |

<sup>1</sup> Individual State estimates not available for the 34 Other States.

<sup>2</sup> May not add due to rounding.

## U.S. Hog Inventory & Market Hogs March 1

Million Head





**Market Hogs and Pigs: Inventory Number by Weight Group,  
State, and United States, March 1, 2009-2010**

| State                   | Under<br>50 Lbs.  |                   | 50-119<br>Lbs.    |                   | 120-179<br>Lbs.   |                   | 180 Lbs.<br>and Over |                   |
|-------------------------|-------------------|-------------------|-------------------|-------------------|-------------------|-------------------|----------------------|-------------------|
|                         | 2009              | 2010              | 2009              | 2010              | 2009              | 2010              | 2009                 | 2010              |
|                         | <i>1,000 Head</i> | <i>1,000 Head</i> | <i>1,000 Head</i> | <i>1,000 Head</i> | <i>1,000 Head</i> | <i>1,000 Head</i> | <i>1,000 Head</i>    | <i>1,000 Head</i> |
| CO                      | 290               | 270               | 105               | 115               | 70                | 80                | 125                  | 115               |
| IL                      | 1,350             | 1,240             | 1,100             | 1,170             | 770               | 770               | 600                  | 690               |
| IN                      | 1,140             | 1,140             | 940               | 900               | 620               | 620               | 580                  | 600               |
| IA                      | 4,840             | 4,540             | 5,560             | 5,460             | 4,690             | 4,440             | 3,370                | 3,350             |
| KS                      | 520               | 490               | 320               | 325               | 290               | 270               | 525                  | 535               |
| MI                      | 315               | 320               | 265               | 250               | 160               | 185               | 190                  | 205               |
| MN                      | 2,460             | 2,320             | 1,930             | 2,010             | 1,390             | 1,330             | 1,040                | 990               |
| MO                      | 1,135             | 1,180             | 585               | 590               | 465               | 465               | 400                  | 410               |
| NE                      | 960               | 900               | 820               | 800               | 610               | 560               | 425                  | 375               |
| NC                      | 3,080             | 3,050             | 2,160             | 1,950             | 1,710             | 1,720             | 1,470                | 1,500             |
| OH                      | 650               | 680               | 500               | 545               | 390               | 405               | 270                  | 240               |
| OK                      | 810               | 810               | 420               | 360               | 210               | 220               | 500                  | 480               |
| PA                      | 320               | 295               | 305               | 320               | 200               | 200               | 195                  | 210               |
| SD                      | 410               | 350               | 290               | 260               | 245               | 215               | 215                  | 205               |
| TX                      | 280               | 145               | 230               | 150               | 200               | 140               | 285                  | 160               |
| UT                      | 250               | 260               | 145               | 130               | 120               | 120               | 110                  | 115               |
| Oth<br>Sts <sup>1</sup> | 999               | 1,027             | 751               | 658               | 592               | 567               | 562                  | 562               |
| US <sup>2</sup>         | 19,809            | 19,017            | 16,426            | 15,993            | 12,732            | 12,307            | 10,862               | 10,742            |

<sup>1</sup> Individual State estimates not available for the 34 Other States.

<sup>2</sup> Weight groups may not add to Market Hogs and Pigs due to rounding.

**Hogs and Pigs: Breeding, Market, and Total Inventory  
by State and United States, June 1, 2009-2010**

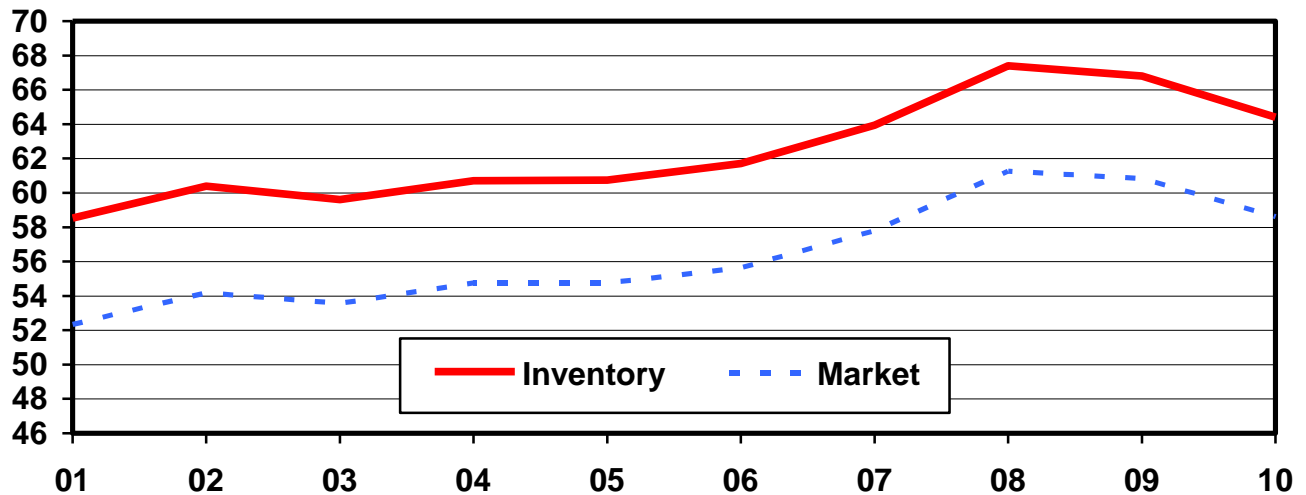
| State                | Breeding          |                   |                | Market            |                   |                | Total             |                   |                |
|----------------------|-------------------|-------------------|----------------|-------------------|-------------------|----------------|-------------------|-------------------|----------------|
|                      | 2009              | 2010              |                | 2009              | 2010              |                | 2009              | 2010              |                |
|                      |                   | Number            | as % of 2009   |                   | Number            | as % of 2009   |                   | Number            | as % of 2009   |
|                      | <i>1,000 Head</i> | <i>1,000 Head</i> | <i>Percent</i> | <i>1,000 Head</i> | <i>1,000 Head</i> | <i>Percent</i> | <i>1,000 Head</i> | <i>1,000 Head</i> | <i>Percent</i> |
| CO                   | 150               | 150               | 100            | 590               | 590               | 100            | 740               | 740               | 100            |
| IL                   | 480               | 490               | 102            | 3,870             | 3,910             | 101            | 4,350             | 4,400             | 101            |
| IN                   | 270               | 290               | 107            | 3,330             | 3,310             | 99             | 3,600             | 3,600             | 100            |
| IA                   | 1,020             | 1,010             | 99             | 18,780            | 17,890            | 95             | 19,800            | 18,900            | 95             |
| KS                   | 170               | 185               | 109            | 1,620             | 1,605             | 99             | 1,790             | 1,790             | 100            |
| MI                   | 110               | 110               | 100            | 950               | 950               | 100            | 1,060             | 1,060             | 100            |
| MN                   | 580               | 550               | 95             | 6,920             | 6,950             | 100            | 7,500             | 7,500             | 100            |
| MO                   | 345               | 350               | 101            | 2,705             | 2,650             | 98             | 3,050             | 3,000             | 98             |
| NE                   | 390               | 370               | 95             | 2,910             | 2,730             | 94             | 3,300             | 3,100             | 94             |
| NC                   | 990               | 880               | 89             | 8,710             | 8,020             | 92             | 9,700             | 8,900             | 92             |
| OH                   | 170               | 165               | 97             | 1,840             | 1,925             | 105            | 2,010             | 2,090             | 104            |
| OK                   | 400               | 410               | 103            | 1,890             | 1,910             | 101            | 2,290             | 2,320             | 101            |
| PA                   | 90                | 100               | 111            | 1,060             | 1,050             | 99             | 1,150             | 1,150             | 100            |
| SD                   | 155               | 160               | 103            | 1,135             | 1,040             | 92             | 1,290             | 1,200             | 93             |
| TX                   | 95                | 55                | 58             | 925               | 605               | 65             | 1,020             | 660               | 65             |
| UT                   | 75                | 80                | 107            | 645               | 650               | 101            | 720               | 730               | 101            |
| Oth Sts <sup>1</sup> | 478               | 433               | 91             | 2,962             | 2,827             | 95             | 3,439             | 3,260             | 95             |
| US <sup>2</sup>      | 5,968             | 5,788             | 97             | 60,842            | 58,612            | 96             | 66,809            | 64,400            | 96             |

<sup>1</sup> Individual State estimates not available for the 34 Other States.

<sup>2</sup> May not add due to rounding.

## U.S. Hog Inventory & Market Hogs June 1

Million Head



**Market Hogs and Pigs: Inventory Number by Weight Group,  
State, and United States, June 1, 2009-2010**

| State                   | Under<br>50 Lbs.  |                   | 50-119<br>Lbs.    |                   | 120-179<br>Lbs.   |                   | 180 Lbs.<br>and Over |                   |
|-------------------------|-------------------|-------------------|-------------------|-------------------|-------------------|-------------------|----------------------|-------------------|
|                         | 2009              | 2010              | 2009              | 2010              | 2009              | 2010              | 2009                 | 2010              |
|                         | <i>1,000 Head</i> | <i>1,000 Head</i> | <i>1,000 Head</i> | <i>1,000 Head</i> | <i>1,000 Head</i> | <i>1,000 Head</i> | <i>1,000 Head</i>    | <i>1,000 Head</i> |
| CO                      | 280               | 280               | 125               | 100               | 70                | 85                | 115                  | 125               |
| IL                      | 1,220             | 1,180             | 1,220             | 1,230             | 790               | 800               | 640                  | 700               |
| IN                      | 1,100             | 1,060             | 1,040             | 1,000             | 630               | 630               | 560                  | 620               |
| IA                      | 4,850             | 4,490             | 5,980             | 5,710             | 4,530             | 4,440             | 3,420                | 3,250             |
| KS                      | 465               | 495               | 380               | 400               | 285               | 230               | 490                  | 480               |
| MI                      | 325               | 300               | 285               | 270               | 160               | 190               | 180                  | 190               |
| MN                      | 2,370             | 2,360             | 2,140             | 2,150             | 1,380             | 1,420             | 1,030                | 1,020             |
| MO                      | 1,205             | 1,135             | 630               | 615               | 455               | 465               | 415                  | 435               |
| NE                      | 980               | 910               | 880               | 870               | 630               | 550               | 420                  | 400               |
| NC                      | 3,090             | 3,070             | 2,350             | 1,940             | 1,740             | 1,600             | 1,530                | 1,410             |
| OH                      | 640               | 700               | 535               | 565               | 395               | 410               | 270                  | 250               |
| OK                      | 770               | 790               | 400               | 420               | 210               | 230               | 510                  | 470               |
| PA                      | 320               | 295               | 350               | 360               | 205               | 195               | 185                  | 200               |
| SD                      | 390               | 360               | 305               | 305               | 225               | 200               | 215                  | 175               |
| TX                      | 265               | 150               | 255               | 135               | 205               | 140               | 200                  | 180               |
| UT                      | 250               | 280               | 155               | 135               | 120               | 120               | 120                  | 115               |
| Oth<br>Sts <sup>1</sup> | 1,034             | 1,024             | 808               | 672               | 574               | 574               | 547                  | 558               |
| US <sup>2</sup>         | 19,554            | 18,879            | 17,838            | 16,877            | 12,604            | 12,279            | 10,847               | 10,578            |

<sup>1</sup> Individual State estimates not available for the 34 Other States.

<sup>2</sup> Weight groups may not add to Market Hogs and Pigs due to rounding.

**Hogs and Pigs: Breeding, Market, and Total Inventory  
by State and United States, September 1, 2008-2009**

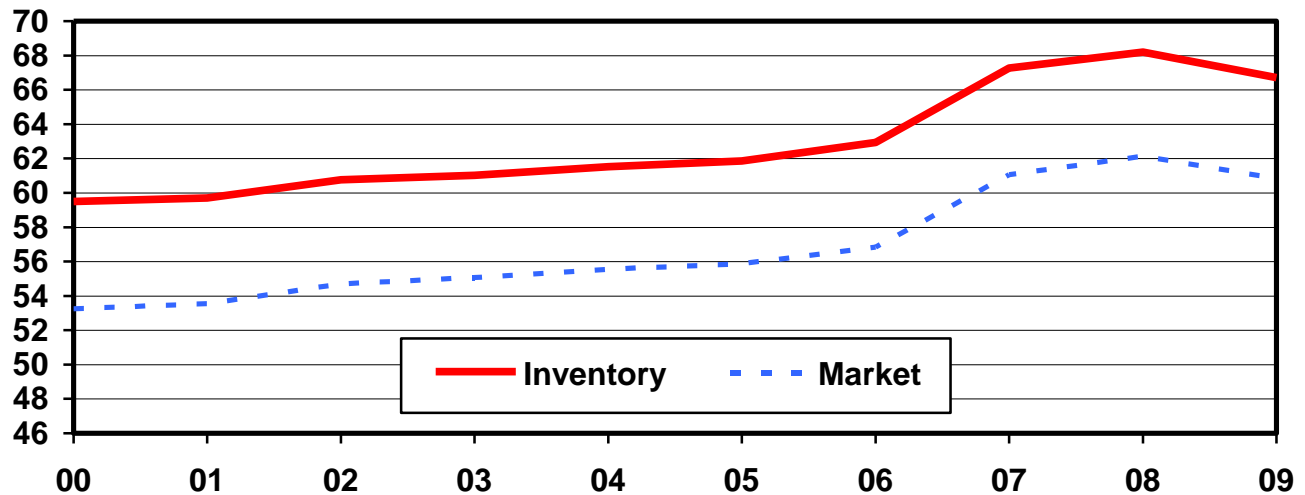
| State                | Breeding          |                   |                | Market            |                   |                | Total             |                   |                |
|----------------------|-------------------|-------------------|----------------|-------------------|-------------------|----------------|-------------------|-------------------|----------------|
|                      | 2008              | 2009              |                | 2008              | 2009              |                | 2008              | 2009              |                |
|                      |                   | Number            | as % of 2008   |                   | Number            | as % of 2008   |                   | Number            | as % of 2008   |
|                      | <i>1,000 Head</i> | <i>1,000 Head</i> | <i>Percent</i> | <i>1,000 Head</i> | <i>1,000 Head</i> | <i>Percent</i> | <i>1,000 Head</i> | <i>1,000 Head</i> | <i>Percent</i> |
| CO                   | 150               | 150               | 100            | 600               | 580               | 97             | 750               | 730               | 97             |
| IL                   | 470               | 470               | 100            | 3,930             | 3,780             | 96             | 4,400             | 4,250             | 97             |
| IN                   | 280               | 280               | 100            | 3,320             | 3,320             | 100            | 3,600             | 3,600             | 100            |
| IA                   | 1,070             | 1,010             | 94             | 18,730            | 18,690            | 100            | 19,800            | 19,700            | 99             |
| KS                   | 170               | 160               | 94             | 1,640             | 1,600             | 98             | 1,810             | 1,760             | 97             |
| MI                   | 100               | 110               | 110            | 950               | 950               | 100            | 1,050             | 1,060             | 101            |
| MN                   | 570               | 560               | 98             | 7,030             | 6,740             | 96             | 7,600             | 7,300             | 96             |
| MO                   | 375               | 350               | 93             | 2,775             | 2,700             | 97             | 3,150             | 3,050             | 97             |
| NE                   | 375               | 380               | 101            | 2,925             | 2,920             | 100            | 3,300             | 3,300             | 100            |
| NC                   | 1,000             | 980               | 98             | 9,300             | 9,020             | 97             | 10,300            | 10,000            | 97             |
| OH                   | 165               | 160               | 97             | 1,755             | 1,890             | 108            | 1,920             | 2,050             | 107            |
| OK                   | 400               | 410               | 103            | 2,060             | 1,950             | 95             | 2,460             | 2,360             | 96             |
| PA                   | 85                | 90                | 106            | 1,035             | 1,030             | 100            | 1,120             | 1,120             | 100            |
| SD                   | 150               | 150               | 100            | 1,210             | 1,130             | 93             | 1,360             | 1,280             | 94             |
| TX                   | 105               | 70                | 67             | 1,015             | 930               | 92             | 1,120             | 1,000             | 89             |
| UT                   | 85                | 80                | 94             | 715               | 680               | 95             | 800               | 760               | 95             |
| Oth Sts <sup>1</sup> | 511               | 465               | 91             | 3,145             | 2,932             | 93             | 3,656             | 3,396             | 93             |
| US <sup>2</sup>      | 6,061             | 5,875             | 97             | 62,135            | 60,842            | 98             | 68,196            | 66,716            | 98             |

<sup>1</sup> Individual State estimates not available for the 34 Other States.

<sup>2</sup> May not add due to rounding.

## U.S. Hog Inventory & Market Hogs September 1

Million Head



**Market Hogs and Pigs: Inventory Number by Weight Group,  
State, and United States, September 1, 2008-2009**

| State                   | Under<br>50 Lbs.  |                   | 50-119<br>Lbs.    |                   | 120-179<br>Lbs.   |                   | 180 Lbs.<br>and Over |                   |
|-------------------------|-------------------|-------------------|-------------------|-------------------|-------------------|-------------------|----------------------|-------------------|
|                         | 2008              | 2009              | 2008              | 2009              | 2008              | 2009              | 2008                 | 2009              |
|                         | <i>1,000 Head</i> | <i>1,000 Head</i> | <i>1,000 Head</i> | <i>1,000 Head</i> | <i>1,000 Head</i> | <i>1,000 Head</i> | <i>1,000 Head</i>    | <i>1,000 Head</i> |
| CO                      | 280               | 285               | 135               | 120               | 70                | 55                | 115                  | 120               |
| IL                      | 1,290             | 1,240             | 1,140             | 1,130             | 840               | 770               | 660                  | 640               |
| IN                      | 1,090             | 1,140             | 1,000             | 970               | 620               | 600               | 610                  | 610               |
| IA                      | 5,110             | 4,840             | 5,680             | 5,760             | 4,460             | 4,600             | 3,480                | 3,490             |
| KS                      | 520               | 505               | 350               | 330               | 275               | 290               | 495                  | 475               |
| MI                      | 325               | 330               | 270               | 265               | 185               | 160               | 170                  | 195               |
| MN                      | 2,570             | 2,420             | 2,070             | 2,010             | 1,400             | 1,280             | 990                  | 1,030             |
| MO                      | 1,230             | 1,150             | 685               | 635               | 495               | 470               | 365                  | 445               |
| NE                      | 990               | 960               | 880               | 860               | 610               | 650               | 445                  | 450               |
| NC                      | 3,370             | 3,200             | 2,380             | 2,390             | 1,860             | 1,790             | 1,690                | 1,640             |
| OH                      | 595               | 675               | 515               | 540               | 400               | 410               | 245                  | 265               |
| OK                      | 890               | 830               | 410               | 380               | 240               | 250               | 520                  | 490               |
| PA                      | 290               | 285               | 335               | 310               | 215               | 210               | 195                  | 225               |
| SD                      | 415               | 370               | 325               | 300               | 240               | 230               | 230                  | 230               |
| TX                      | 295               | 260               | 280               | 230               | 205               | 200               | 235                  | 240               |
| UT                      | 270               | 265               | 170               | 155               | 145               | 130               | 130                  | 130               |
| Oth<br>Sts <sup>1</sup> | 1,113             | 1,003             | 812               | 763               | 595               | 589               | 626                  | 578               |
| US <sup>2</sup>         | 20,643            | 19,758            | 17,437            | 17,148            | 12,855            | 12,684            | 11,201               | 11,253            |

<sup>1</sup> Individual State estimates not available for the 34 Other States.

<sup>2</sup> Weight groups may not add to Market Hogs and Pigs due to rounding.

**Hogs and Pigs: Breeding, Market, and Total Inventory  
by State and United States, December 1, 2008-2009**

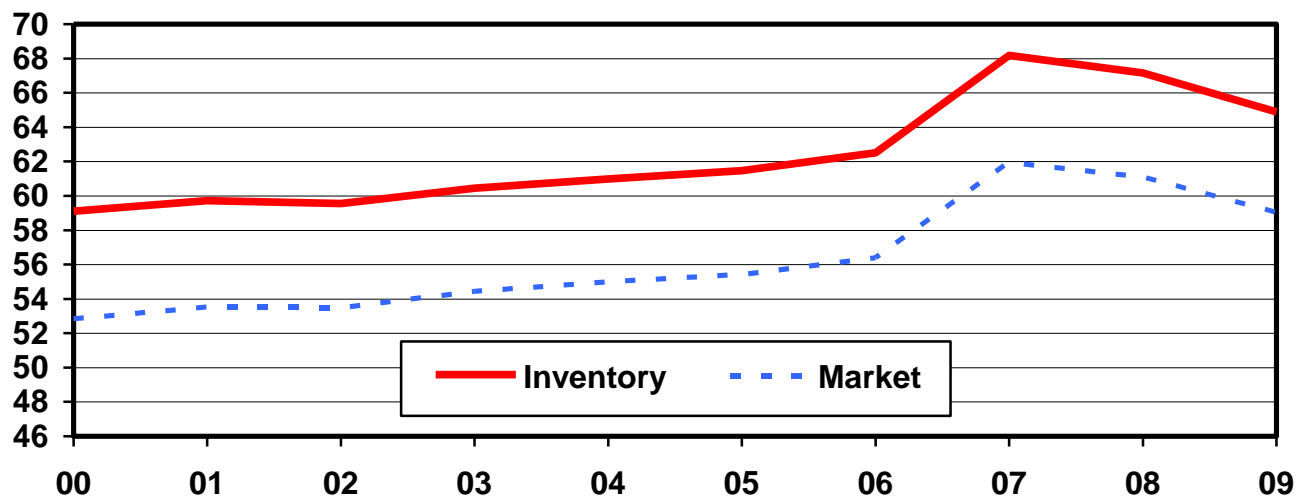
| State                | Breeding          |                   |                | Market            |                   |                | Total             |                   |                |
|----------------------|-------------------|-------------------|----------------|-------------------|-------------------|----------------|-------------------|-------------------|----------------|
|                      | 2008              | 2009              |                | 2008              | 2009              |                | 2008              | 2009              |                |
|                      |                   | Number            | as % of 2008   |                   | Number            | as % of 2008   |                   | Number            | as % of 2008   |
|                      | <i>1,000 Head</i> | <i>1,000 Head</i> | <i>Percent</i> | <i>1,000 Head</i> | <i>1,000 Head</i> | <i>Percent</i> | <i>1,000 Head</i> | <i>1,000 Head</i> | <i>Percent</i> |
| CO                   | 150               | 150               | 100            | 580               | 560               | 97             | 730               | 710               | 97             |
| IL                   | 490               | 480               | 98             | 3,860             | 3,770             | 98             | 4,350             | 4,250             | 98             |
| IN                   | 280               | 280               | 100            | 3,270             | 3,320             | 102            | 3,550             | 3,600             | 101            |
| IA                   | 1,070             | 1,020             | 95             | 18,830            | 17,980            | 95             | 19,900            | 19,000            | 95             |
| KS                   | 165               | 180               | 109            | 1,575             | 1,630             | 103            | 1,740             | 1,810             | 104            |
| MI                   | 110               | 110               | 100            | 920               | 970               | 105            | 1,030             | 1,080             | 105            |
| MN                   | 580               | 560               | 97             | 6,920             | 6,640             | 96             | 7,500             | 7,200             | 96             |
| MO                   | 370               | 360               | 97             | 2,780             | 2,740             | 99             | 3,150             | 3,100             | 98             |
| NE                   | 380               | 370               | 97             | 2,970             | 2,730             | 92             | 3,350             | 3,100             | 93             |
| NC                   | 980               | 930               | 95             | 8,720             | 8,670             | 99             | 9,700             | 9,600             | 99             |
| OH                   | 170               | 165               | 97             | 1,770             | 1,845             | 104            | 1,940             | 2,010             | 104            |
| OK                   | 400               | 410               | 103            | 2,000             | 1,880             | 94             | 2,400             | 2,290             | 95             |
| PA                   | 90                | 100               | 111            | 1,030             | 1,040             | 101            | 1,120             | 1,140             | 102            |
| SD                   | 155               | 145               | 94             | 1,125             | 1,045             | 93             | 1,280             | 1,190             | 93             |
| TX                   | 100               | 60                | 60             | 1,020             | 700               | 69             | 1,120             | 760               | 68             |
| UT                   | 75                | 75                | 100            | 665               | 655               | 98             | 740               | 730               | 99             |
| Oth Sts <sup>1</sup> | 497               | 455               | 92             | 3,052             | 2,862             | 94             | 3,548             | 3,317             | 93             |
| US <sup>2</sup>      | 6,062             | 5,850             | 97             | 61,087            | 59,037            | 97             | 67,148            | 64,887            | 97             |

<sup>1</sup> Individual State estimates not available for the 34 Other States.

<sup>2</sup> May not add due to rounding.

## U.S. Hog Inventory & Market Hogs December 1

Million Head



**Market Hogs and Pigs: Inventory Number by Weight Group,  
State, and United States, December 1, 2008-2009**

| State                   | Under<br>50 Lbs.  |                   | 50-119<br>Lbs.    |                   | 120-179<br>Lbs.   |                   | 180 Lbs.<br>and Over |                   |
|-------------------------|-------------------|-------------------|-------------------|-------------------|-------------------|-------------------|----------------------|-------------------|
|                         | 2008              | 2009              | 2008              | 2009              | 2008              | 2009              | 2008                 | 2009              |
|                         | <i>1,000 Head</i> | <i>1,000 Head</i> | <i>1,000 Head</i> | <i>1,000 Head</i> | <i>1,000 Head</i> | <i>1,000 Head</i> | <i>1,000 Head</i>    | <i>1,000 Head</i> |
| CO                      | 285               | 270               | 100               | 115               | 70                | 50                | 125                  | 125               |
| IL                      | 1,270             | 1,200             | 1,140             | 1,150             | 800               | 730               | 650                  | 690               |
| IN                      | 1,090             | 1,080             | 960               | 970               | 610               | 640               | 610                  | 630               |
| IA                      | 4,730             | 4,430             | 5,880             | 5,700             | 4,500             | 4,430             | 3,720                | 3,420             |
| KS                      | 475               | 480               | 360               | 335               | 245               | 295               | 495                  | 520               |
| MI                      | 290               | 335               | 270               | 270               | 175               | 165               | 185                  | 200               |
| MN                      | 2,420             | 2,350             | 2,050             | 2,010             | 1,360             | 1,230             | 1,090                | 1,050             |
| MO                      | 1,200             | 1,160             | 700               | 655               | 490               | 465               | 390                  | 460               |
| NE                      | 1,010             | 880               | 880               | 850               | 630               | 600               | 450                  | 400               |
| NC                      | 3,020             | 3,090             | 2,290             | 2,200             | 1,770             | 1,760             | 1,640                | 1,620             |
| OH                      | 600               | 635               | 515               | 540               | 400               | 395               | 255                  | 275               |
| OK                      | 830               | 780               | 420               | 380               | 260               | 240               | 490                  | 480               |
| PA                      | 285               | 280               | 335               | 330               | 215               | 220               | 195                  | 210               |
| SD                      | 390               | 335               | 270               | 280               | 240               | 220               | 225                  | 210               |
| TX                      | 285               | 145               | 235               | 160               | 205               | 160               | 295                  | 235               |
| UT                      | 235               | 260               | 170               | 135               | 140               | 130               | 120                  | 130               |
| Oth<br>Sts <sup>1</sup> | 1,013             | 995               | 821               | 702               | 621               | 569               | 598                  | 597               |
| US <sup>2</sup>         | 19,428            | 18,705            | 17,396            | 16,782            | 12,731            | 12,299            | 11,533               | 11,252            |

<sup>1</sup> Individual State estimates not available for the 34 Other States.

<sup>2</sup> Weight groups may not add to Market Hogs and Pigs due to rounding.

**Farrowings: Number of Sows, Pigs per Litter, and Pig Crop  
by State and United States, December-February 2009-2010**

| State                | Sows Farrowing <sup>1</sup> |                   |                | Pigs per Litter <sup>1</sup> |               | Pig Crop <sup>1 2</sup> |                   |                |
|----------------------|-----------------------------|-------------------|----------------|------------------------------|---------------|-------------------------|-------------------|----------------|
|                      | 2009                        | 2010              |                | 2009                         | 2010          | 2009                    | 2010              |                |
|                      |                             | Number            | as % of 2009   |                              |               |                         | Number            | as % of 2009   |
|                      | <i>1,000 Head</i>           | <i>1,000 Head</i> | <i>Percent</i> | <i>Number</i>                | <i>Number</i> | <i>1,000 Head</i>       | <i>1,000 Head</i> | <i>Percent</i> |
| CO                   | 75                          | 71                | 95             | 8.60                         | 9.60          | 645                     | 682               | 106            |
| IL                   | 250                         | 265               | 106            | 9.50                         | 9.40          | 2,375                   | 2,491             | 105            |
| IN                   | 140                         | 140               | 100            | 9.30                         | 9.40          | 1,302                   | 1,316             | 101            |
| IA                   | 500                         | 475               | 95             | 9.60                         | 9.75          | 4,800                   | 4,631             | 96             |
| KS                   | 81                          | 83                | 102            | 9.10                         | 9.35          | 737                     | 776               | 105            |
| MI                   | 53                          | 54                | 102            | 9.70                         | 9.80          | 514                     | 529               | 103            |
| MN                   | 285                         | 270               | 95             | 9.75                         | 9.90          | 2,779                   | 2,673             | 96             |
| MO                   | 190                         | 195               | 103            | 9.35                         | 9.50          | 1,777                   | 1,853             | 104            |
| NE                   | 185                         | 175               | 95             | 9.75                         | 10.00         | 1,804                   | 1,750             | 97             |
| NC                   | 530                         | 490               | 92             | 9.55                         | 9.50          | 5,062                   | 4,655             | 92             |
| OH                   | 88                          | 90                | 102            | 9.40                         | 9.35          | 827                     | 842               | 102            |
| OK                   | 190                         | 190               | 100            | 8.90                         | 9.45          | 1,691                   | 1,796             | 106            |
| PA                   | 40                          | 47                | 118            | 9.75                         | 9.70          | 390                     | 456               | 117            |
| SD                   | 83                          | 79                | 95             | 9.85                         | 10.20         | 818                     | 806               | 99             |
| TX                   | 46                          | 31                | 67             | 9.65                         | 8.70          | 444                     | 270               | 61             |
| UT                   | 42                          | 40                | 95             | 9.70                         | 9.80          | 407                     | 392               | 96             |
| Oth Sts <sup>3</sup> | 233                         | 206               | 88             | 9.36                         | 9.50          | 2,180                   | 1,955             | 90             |
| US <sup>4</sup>      | 3,011                       | 2,901             | 96             | 9.48                         | 9.61          | 28,552                  | 27,873            | 98             |

<sup>1</sup> December preceding year.

<sup>2</sup> Number of pigs born December-February that were still on hand March 1, or had been sold.

<sup>3</sup> Individual State estimates not available for the 34 Other States.

<sup>4</sup> May not add due to rounding.



**Farrowings: Number of Sows, Pigs per Litter, and Pig Crop  
by State and United States, March-May 2009-2010**

| State                | Sows Farrowing    |                   |                | Pigs per Litter |               | Pig Crop <sup>1</sup> |                   |                |
|----------------------|-------------------|-------------------|----------------|-----------------|---------------|-----------------------|-------------------|----------------|
|                      | 2009              | 2010              |                | 2009            | 2010          | 2009                  | 2010              |                |
|                      |                   | Number            | as % of 2009   |                 |               |                       | Number            | as % of 2009   |
|                      | <i>1,000 Head</i> | <i>1,000 Head</i> | <i>Percent</i> | <i>Number</i>   | <i>Number</i> | <i>1,000 Head</i>     | <i>1,000 Head</i> | <i>Percent</i> |
| CO                   | 72                | 71                | 99             | 9.00            | 9.90          | 648                   | 703               | 108            |
| IL                   | 250               | 265               | 106            | 9.50            | 9.50          | 2,375                 | 2,518             | 106            |
| IN                   | 135               | 140               | 104            | 9.40            | 9.60          | 1,269                 | 1,344             | 106            |
| IA                   | 495               | 460               | 93             | 9.65            | 9.95          | 4,777                 | 4,577             | 96             |
| KS                   | 81                | 83                | 102            | 9.40            | 9.35          | 761                   | 776               | 102            |
| MI                   | 54                | 52                | 96             | 9.65            | 9.70          | 521                   | 504               | 97             |
| MN                   | 285               | 275               | 96             | 9.95            | 10.15         | 2,836                 | 2,791             | 98             |
| MO                   | 185               | 185               | 100            | 9.80            | 10.05         | 1,813                 | 1,859             | 103            |
| NE                   | 190               | 175               | 92             | 9.90            | 10.15         | 1,881                 | 1,776             | 94             |
| NC                   | 540               | 475               | 88             | 9.70            | 9.70          | 5,238                 | 4,608             | 88             |
| OH                   | 88                | 88                | 100            | 9.50            | 9.50          | 836                   | 836               | 100            |
| OK                   | 185               | 190               | 103            | 9.00            | 9.75          | 1,665                 | 1,853             | 111            |
| PA                   | 42                | 48                | 114            | 9.75            | 9.80          | 410                   | 470               | 115            |
| SD                   | 86                | 86                | 100            | 10.10           | 10.30         | 869                   | 886               | 102            |
| TX                   | 48                | 31                | 65             | 9.70            | 8.50          | 466                   | 264               | 57             |
| UT                   | 43                | 41                | 95             | 9.90            | 10.00         | 426                   | 410               | 96             |
| Oth Sts <sup>2</sup> | 239               | 210               | 88             | 9.28            | 9.64          | 2,221                 | 2,024             | 91             |
| US <sup>3</sup>      | 3,018             | 2,875             | 95             | 9.61            | 9.81          | 29,012                | 28,199            | 97             |

<sup>1</sup> Number of pigs born March-May that were still on hand June 1, or had been sold.

<sup>2</sup> Individual State estimates not available for the 34 Other States.

<sup>3</sup> May not add due to rounding.

**Farrowings: Number of Sows, Pigs per Litter, and Pig Crop  
by State and United States, June-August 2008-2010**

| State                | Sows Farrowing    |                   |                   |                | Pigs per Litter |               | Pig Crop <sup>1</sup> |                   |                |
|----------------------|-------------------|-------------------|-------------------|----------------|-----------------|---------------|-----------------------|-------------------|----------------|
|                      | 2008              | 2009              | 2010 <sup>2</sup> |                | 2008            | 2009          | 2008                  | 2009              |                |
|                      |                   |                   | Number            | as % of 2009   |                 |               |                       | Number            | as % of 2008   |
|                      | <i>1,000 Head</i> | <i>1,000 Head</i> | <i>1,000 Head</i> | <i>Percent</i> | <i>Number</i>   | <i>Number</i> | <i>1,000 Head</i>     | <i>1,000 Head</i> | <i>Percent</i> |
| CO                   | 76                | 72                | 74                | 103            | 8.90            | 9.50          | 676                   | 684               | 101            |
| IL                   | 240               | 245               | 270               | 110            | 9.45            | 9.50          | 2,268                 | 2,328             | 103            |
| IN                   | 145               | 135               | 145               | 107            | 9.25            | 9.50          | 1,341                 | 1,283             | 96             |
| IA                   | 510               | 475               | 470               | 99             | 9.40            | 9.75          | 4,794                 | 4,631             | 97             |
| KS                   | 81                | 80                | 83                | 104            | 9.15            | 9.25          | 741                   | 740               | 100            |
| MI                   | 53                | 56                | 56                | 100            | 9.25            | 9.60          | 490                   | 538               | 110            |
| MN                   | 285               | 275               | 285               | 104            | 9.80            | 10.00         | 2,793                 | 2,750             | 98             |
| MO                   | 195               | 185               | 180               | 97             | 9.70            | 10.00         | 1,892                 | 1,850             | 98             |
| NE                   | 185               | 185               | 180               | 97             | 9.70            | 10.05         | 1,795                 | 1,859             | 104            |
| NC                   | 560               | 540               | 470               | 87             | 9.65            | 9.70          | 5,404                 | 5,238             | 97             |
| OH                   | 89                | 86                | 83                | 97             | 9.50            | 9.60          | 846                   | 826               | 98             |
| OK                   | 195               | 190               | 185               | 97             | 9.35            | 9.50          | 1,823                 | 1,805             | 99             |
| PA                   | 38                | 42                | 49                | 117            | 9.60            | 10.00         | 365                   | 420               | 115            |
| SD                   | 82                | 82                | 82                | 100            | 9.80            | 10.00         | 804                   | 820               | 102            |
| TX                   | 52                | 44                | 29                | 66             | 8.55            | 9.00          | 445                   | 396               | 89             |
| UT                   | 43                | 42                | 41                | 98             | 9.90            | 10.00         | 426                   | 420               | 99             |
| Oth Sts <sup>3</sup> | 246               | 225               | 208               | 92             | 9.50            | 9.45          | 2,337                 | 2,130             | 91             |
| US <sup>4</sup>      | 3,075             | 2,959             | 2,890             | 98             | 9.51            | 9.70          | 29,240                | 28,718            | 98             |

<sup>1</sup> Number of pigs born June-August that were still on hand September 1, or had been sold.

<sup>2</sup> Intentions.

<sup>3</sup> Individual State estimates not available for the 34 Other States.

<sup>4</sup> May not add due to rounding.

**Farrowings: Number of Sows, Pigs per Litter, and Pig Crop  
by State and United States, September-November 2008-2010**

| State                | Sows Farrowing    |                   |                   |                | Pigs Per Litter |               | Pig Crop <sup>1</sup> |                   |                |
|----------------------|-------------------|-------------------|-------------------|----------------|-----------------|---------------|-----------------------|-------------------|----------------|
|                      | 2008              | 2009              | 2010 <sup>2</sup> |                | 2008            | 2009          | 2008                  | 2009              |                |
|                      |                   |                   | Number            | as % of 2009   |                 |               |                       | Number            | as % of 2008   |
|                      | <i>1,000 Head</i> | <i>1,000 Head</i> | <i>1,000 Head</i> | <i>Percent</i> | <i>Number</i>   | <i>Number</i> | <i>1,000 Head</i>     | <i>1,000 Head</i> | <i>Percent</i> |
| CO                   | 71                | 69                | 73                | 106            | 8.80            | 9.50          | 625                   | 656               | 105            |
| IL                   | 255               | 255               | 270               | 106            | 9.40            | 9.45          | 2,397                 | 2,410             | 101            |
| IN                   | 140               | 135               | 150               | 111            | 9.20            | 9.55          | 1,288                 | 1,289             | 100            |
| IA                   | 510               | 480               | 475               | 99             | 9.50            | 9.80          | 4,845                 | 4,704             | 97             |
| KS                   | 76                | 84                | 83                | 99             | 9.40            | 9.35          | 714                   | 785               | 110            |
| MI                   | 53                | 56                | 55                | 98             | 9.65            | 9.80          | 512                   | 549               | 107            |
| MN                   | 285               | 275               | 290               | 105            | 9.85            | 10.05         | 2,807                 | 2,764             | 98             |
| MO                   | 200               | 190               | 190               | 100            | 9.65            | 9.90          | 1,930                 | 1,881             | 97             |
| NE                   | 185               | 175               | 180               | 103            | 9.80            | 10.00         | 1,813                 | 1,750             | 97             |
| NC                   | 520               | 510               | 460               | 90             | 9.55            | 9.60          | 4,966                 | 4,896             | 99             |
| OH                   | 89                | 87                | 85                | 98             | 9.00            | 9.40          | 801                   | 818               | 102            |
| OK                   | 185               | 185               | 185               | 100            | 9.20            | 9.50          | 1,702                 | 1,758             | 103            |
| PA                   | 40                | 46                | 49                | 107            | 9.35            | 9.90          | 374                   | 455               | 122            |
| SD                   | 84                | 80                | 83                | 104            | 9.80            | 10.10         | 823                   | 808               | 98             |
| TX                   | 50                | 30                | 28                | 93             | 9.55            | 9.35          | 478                   | 281               | 59             |
| UT                   | 40                | 40                | 40                | 100            | 10.00           | 9.80          | 400                   | 392               | 98             |
| Oth Sts <sup>3</sup> | 245               | 218               | 203               | 93             | 9.37            | 9.47          | 2,296                 | 2,064             | 90             |
| US <sup>4</sup>      | 3,028             | 2,915             | 2,899             | 99             | 9.50            | 9.70          | 28,771                | 28,260            | 98             |

<sup>1</sup> Number of pigs born September-November that were still on hand December 1, or had been sold.

<sup>2</sup> Intentions.

<sup>3</sup> Individual State estimates not available for the 34 Other States.

<sup>4</sup> May not add due to rounding.

**Monthly Farrowings: Number of Sows, Pigs per Litter, and Pig Crop,  
United States, December-November 2009-2010**

| Month            | Sows Farrowing <sup>1</sup> |                   | Pigs per Litter |               | Pig Crop <sup>1</sup> |                   |
|------------------|-----------------------------|-------------------|-----------------|---------------|-----------------------|-------------------|
|                  | 2009                        | 2010              | 2009            | 2010          | 2009                  | 2010              |
|                  | <i>1,000 Head</i>           | <i>1,000 Head</i> | <i>Number</i>   | <i>Number</i> | <i>1,000 Head</i>     | <i>1,000 Head</i> |
| Dec <sup>2</sup> | 997                         | 980               | 9.50            | 9.62          | 9,475                 | 9,425             |
| Jan              | 1,013                       | 970               | 9.45            | 9.58          | 9,576                 | 9,292             |
| Feb              | 1,001                       | 952               | 9.49            | 9.62          | 9,501                 | 9,156             |
| Mar              | 1,009                       | 972               | 9.56            | 9.76          | 9,650                 | 9,486             |
| Apr              | 1,003                       | 950               | 9.61            | 9.84          | 9,644                 | 9,350             |
| May              | 1,006                       | 953               | 9.66            | 9.82          | 9,718                 | 9,363             |
| Jun              | 996                         |                   | 9.71            |               | 9,673                 |                   |
| Jul              | 986                         |                   | 9.70            |               | 9,567                 |                   |
| Aug              | 978                         |                   | 9.69            |               | 9,478                 |                   |
| Sep              | 994                         |                   | 9.71            |               | 9,647                 |                   |
| Oct              | 965                         |                   | 9.70            |               | 9,364                 |                   |
| Nov              | 956                         |                   | 9.68            |               | 9,249                 |                   |
| Total            | 11,904                      |                   | 9.62            |               | 114,542               |                   |

<sup>1</sup> Monthly values may not add to quarterly or annual totals due to rounding.

<sup>2</sup> December preceding year.

## Reliability of June 1 Hogs and Pigs Estimates

**Survey Procedures:** A random sample of roughly 8,800 U.S. producers was surveyed to provide data for these estimates. Survey procedures ensured that all hog and pig producers, regardless of size, had a chance to be included in the survey. Large producers were sampled more heavily than small operations. During the first half of June 2010, data were collected from about 7,200 operations, 82 percent of the total sample. The data collected were received by electronic data reporting (EDR), mail, telephone, and face-to-face personal interviews. Regardless of when operations responded, they were asked to report inventories as of June 1, 2010.

**Estimation Procedures:** Hogs and pigs estimates were prepared by the Agricultural Statistics Board after reviewing recommendations and analysis submitted by each field office. National and State survey data were reviewed for reasonableness with each other and with estimates from past years using a balance sheet. The balance sheet begins with the previous inventory estimate, adds the estimates of births and imports, and subtracts the estimates of slaughter, exports, and deaths. This indicated ending inventory level is compared to the Agricultural Statistics Board estimate for reasonableness.

**Revision Policy:** Revisions to previous estimates are made to improve quarter to quarter relationships. Estimates for the previous four quarters are subject to revision when current estimates are made. In December, estimates for all quarters of the current and previous year are reviewed. The reviews are primarily based on hog check-off receipts and slaughter. Estimates will also be reviewed after data from the Department of Agriculture five-year Census of Agriculture are available. No revisions will be made after that date.

**Reliability:** Since all operations raising hogs are not included in the sample, survey estimates are subject to sampling variability. Survey results are also subject to non-sampling errors such as omissions, duplication, and mistakes in reporting, recording, and processing the data. The affects of these errors cannot be measured directly. They are minimized through rigid quality controls in the data collection process and through a careful review of all reported data for consistency and reasonableness.

To assist users in evaluating the reliability of the estimates in this report, the "**Root Mean Square Error**" is shown for selected items in the following table. The "Root Mean Square Error" is a statistical measure based on past performance and is computed using the difference between first and final estimates. The "Root Mean Square Error" for hog inventory estimates over the past 20 quarters is 1.6 percent. This means that chances are 2 out of 3 that the final estimate will not be above or below the current estimate of 64.4 million head by more than 1.6 percent. Chances are 9 out of 10 that the difference will not exceed 2.8 percent.

**Reliability of June 1 Hog Estimates**

| Item                | Root Mean Square Error | 90% Confidence Level |       | Difference Between First and Latest Estimates |                   |                   | Quarters           |                    |
|---------------------|------------------------|----------------------|-------|---|-------------------|-------------------|--------------------|--------------------|
|                     |                        |                      |       | Average                                       | Smallest          | Largest           | First Above Latest | First Below Latest |
|                     |                        |                      |       | <i>1,000 Head</i>                             | <i>1,000 Head</i> | <i>1,000 Head</i> | <i>Number</i>      | <i>Number</i>      |
| All Hogs & Pigs     | 1.6                    | 2.8                  | 1,803 | 738   | 67                | 3,067             | 5                  | 15                 |
| Pig Crop            | 2.0                    | 3.5                  | 987   | 393   | 0                 | 1,644             | 5                  | 14                 |
| Expected Farrowings |                        |                      |       |   |                   |                   |                    |                    |
| Next Quarter        | 2.4                    | 4.1                  | 119   | 47  | 3                 | 216               | 5                  | 15                 |
| Following Quarter   | 2.6                    | 4.5                  | 130   | 52  | 3                 | 220               | 5                  | 15                 |

**Information Contacts**

Listed below are the commodity specialists in the Livestock Branch of the National Agricultural Statistics Service to contact for additional information.

- Dan Kerestes, Chief, Livestock Branch ..... (202) 720-3570
- Scott Hollis, Head, Livestock Section ..... (202) 690-2424
  - Jim Collom – Dairy Products ..... (202) 690-3236
  - Joe Gaynor – Dairy Products Prices ..... (202) 690-2168
  - Jason Hardegee – Cattle, Cattle on Feed ..... (202) 720-3040
  - Sherry Bertramsen – Livestock Slaughter ..... (515) 284-4340
  - Everett Olbert – Sheep and Goats ..... (202) 720-4751
  - Mike Miller – Milk Production and Milk Cows ..... (202) 720-3278
  - Nick Streff – Hogs and Pigs ..... (202) 720-3106

## ACCESS TO REPORTS!!

---

For your convenience, there are several ways to obtain NASS reports, data products, and services:

### INTERNET ACCESS

All NASS reports are available free of charge. For free access, connect to the Internet and go to the NASS Home Page at: [www.nass.usda.gov](http://www.nass.usda.gov).

### E-MAIL SUBSCRIPTION

All NASS reports are available by subscription free of charge direct to your e-mail address. Starting with the NASS Home Page at [www.nass.usda.gov](http://www.nass.usda.gov), under the right navigation, *Receive reports by Email*, click on **National** or **State**. Follow the instructions on the screen.

-----

### PRINTED REPORTS OR DATA PRODUCTS

**CALL OUR TOLL-FREE ORDER DESK: 800-999-6779 (U.S. and Canada)**  
**Other areas, please call 703-605-6220      FAX: 703-605-6880**  
**(Visa, MasterCard, check, or money order acceptable for payment.)**

-----

### ASSISTANCE

For **assistance** with general agricultural statistics or further information about NASS or its products or services, contact the **Agricultural Statistics Hotline** at **800-727-9540**, 7:30 a.m. to 4:00 p.m. ET, or e-mail: [nass@nass.usda.gov](mailto:nass@nass.usda.gov).

The U.S. Department of Agriculture (USDA) prohibits discrimination in all its programs and activities on the basis of race, color, national origin, age, disability, and where applicable, sex, marital status, familial status, parental status, religion, sexual orientation, genetic information, political beliefs, reprisal, or because all or a part of an individual's income is derived from any public assistance program. (Not all prohibited bases apply to all programs.) Persons with disabilities who require alternative means for communication of program information (Braille, large print, audiotape, etc.) should contact USDA's TARGET Center at (202) 720-2600 (voice and TDD).

To file a complaint of discrimination, write to USDA, Director, Office of Civil Rights, 1400 Independence Avenue, S.W., Washington, D.C. 20250-9410, or call (800) 795-3272 (voice) or (202) 720-6382 (TDD). USDA is an equal opportunity provider and employer.