



# Cattle on Feed

---

Released January 22, 2010, by the National Agricultural Statistics Service (NASS), Agricultural Statistics Board, U.S. Department of Agriculture. For information on *Cattle on Feed* call Jason Hardegree at (202) 720-3040, office hours 7:30 a.m. to 4:00 p.m. ET.

## U.S. Cattle on Feed Down 2 Percent

**Cattle and calves on feed** for slaughter market in the United States for feedlots with capacity of 1,000 or more head totaled 11.0 million head on January 1, 2010. The inventory was 2 percent below January 1, 2009. The inventory included 6.88 million steers and steer calves, down 3 percent from the previous year. This group accounted for 62 percent of the total inventory. Heifers and heifer calves accounted for 4.07 million head, down 1 percent from 2009.

**Placements** in feedlots during December totaled 1.55 million, 6 percent below 2008. Net placements were 1.47 million head. During December, placements of cattle and calves weighing less than 600 pounds were 430,000, 600-699 pounds were 420,000, 700-799 pounds were 401,000, and 800 pounds and greater were 295,000.

**Marketings** of fed cattle during December totaled 1.74 million, 4 percent above 2008.

**Other disappearance** totaled 72,000 during December, 5 percent below 2008.

**Cattle on Feed: Number on Feed, Placements, Marketings, and  
Other Disappearance, 1,000+ Capacity Feedlots,  
United States, January 1, 2009-2010**

Item	Number		Percent of Previous Year
	2009	2010	
	<i>1,000 Head</i>	<i>1,000 Head</i>	<i>Percent</i>
On Feed Dec 1	11,346	*11,277	99
Placed on Feed During Dec	1,647	1,546	94
Fed Cattle Marketed During Dec	1,683	1,742	104
Other Disappearance During Dec	76	72	95
On Feed Jan 1	11,234	11,009	98

\* Revised.

**Cattle on Feed: Number on Feed, Placements, Marketings, and  
Other Disappearance, 1,000+ Capacity Feedlots,  
United States, December 1, 2008-2009**

Item	Number		Percent of Previous Year
	2008	2009	
	<i>1,000 Head</i>	<i>1,000 Head</i>	<i>Percent</i>
On Feed Nov 1	10,972	11,134	101
Placed on Feed During Nov	2,016	*1,844	91
Fed Cattle Marketed During Nov	1,575	*1,635	104
Other Disappearance During Nov	67	66	99
On Feed Dec 1	11,346	*11,277	99

\* Revised.

**Cattle on Feed: Number on Feed by Class, 1,000+ Capacity Feedlots,  
United States, January 1, 2009-2010**

Item	Number		Percent of Previous Year
	2009	2010	
	<i>1,000 Head</i>	<i>1,000 Head</i>	<i>Percent</i>
Class on Feed Jan 1			
Steers and Steer Calves	7,071	6,877	97
Heifers and Heifer Calves	4,100	4,069	99
Cows and Bulls	63	63	100

**Cattle on Feed: Number on Feed, 1,000+ Capacity Feedlots,  
by Month, State, and United States 2009-2010**

State	Jan 1, 2009	Dec 1, 2009	Jan 1, 2010		
			Number	Percent of Previous Year	Percent of Previous Month
	<i>1,000 Head</i>	<i>1,000 Head</i>	<i>1,000 Head</i>	<i>Percent</i>	<i>Percent</i>
AZ	358	282	288	80	102
CA	490	465	465	95	100
CO	1,000	1,060	1,010	101	95
ID	220	*210	215	98	102
IA	500	560	570	114	102
KS	2,270	2,330	2,250	99	97
NE	2,370	2,410	2,360	100	98
NM	164	(D)	(D)	(D)	(D)
OK	335	375	365	109	97
SD	220	235	235	107	100
TX	2,790	2,760	2,680	96	97
WA	157	172	166	106	97
Oth Sts <sup>1</sup>	360	418	405	(X)	97
US	11,234	*11,277	11,009	98	98

\* Revised.

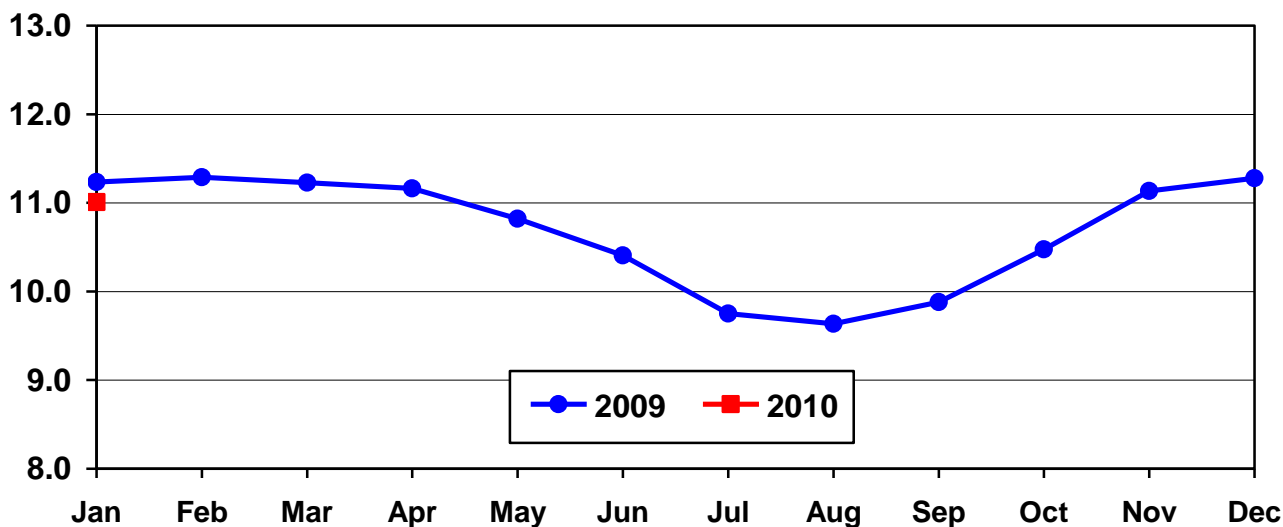
(D) Withheld to avoid disclosing data for individual operations.

(X) Comparison to 2009 is not applicable.

<sup>1</sup> Includes unpublished New Mexico totals for Dec. 2009 and Jan. 2010.

## United States Cattle on Feed 1,000+ Capacity Feedlots

Million Head



**Cattle on Feed: Number Placed on Feed, 1,000+ Capacity Feedlots,  
by Month, State, and United States 2008-2009**

State	During Dec 2008	During Nov 2009	During Dec 2009		
			Number	Percent of Previous Year	Percent of Previous Month
	<i>1,000 Head</i>	<i>1,000 Head</i>	<i>1,000 Head</i>	<i>Percent</i>	<i>Percent</i>
AZ	29	26	32	110	123
CA	59	50	63	107	126
CO	150	165	110	73	67
ID	36	*44	41	114	93
IA	66	108	85	129	79
KS	380	355	375	99	106
NE	345	400	320	93	80
NM	16	( D )	( D )	( D )	( D )
OK	49	57	50	102	88
SD	38	67	38	100	57
TX	405	455	350	86	77
WA	28	47	29	104	62
Oth Sts <sup>1</sup>	46	70	53	( X )	76
US	1,647	*1,844	1,546	94	84

\* Revised.

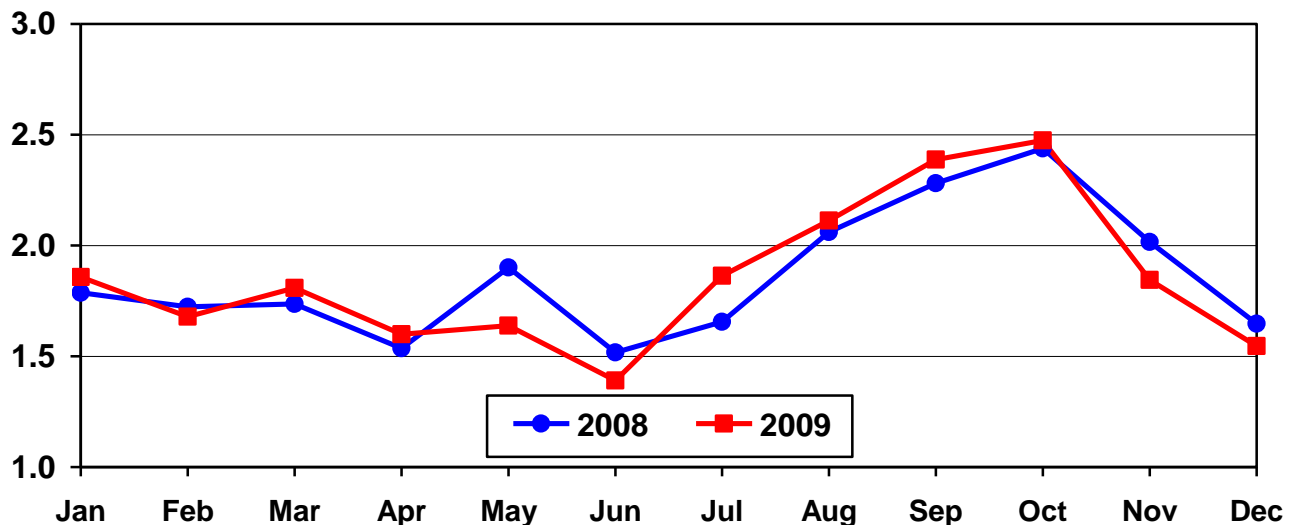
(D) Withheld to avoid disclosing data for individual operations.

(X) Comparison to 2008 is not applicable.

<sup>1</sup> Includes unpublished New Mexico totals for 2009.

**United States Cattle on Feed  
1,000+ Capacity Feedlots Number Placed**

Million Head



**Cattle on Feed: Number Placed on Feed by Weight Group, 1,000+ Capacity  
Feedlots, by Month, State, and United States, 2008-2009**

State	During December									
	Under 600		600-699		700-799		800 Plus		Total	
	2008	2009	2008	2009	2008	2009	2008	2009	2008	2009
	<i>1,000 Head</i>	<i>1,000 Head</i>	<i>1,000 Head</i>	<i>1,000 Head</i>	<i>1,000 Head</i>	<i>1,000 Head</i>	<i>1,000 Head</i>	<i>1,000 Head</i>	<i>1,000 Head</i>	<i>1,000 Head</i>
CO	25	25	45	30	40	30	40	25	150	110
KS	70	70	120	100	120	135	70	70	380	375
NE	55	60	100	80	100	100	90	80	345	320
TX	140	140	135	110	90	70	40	30	405	350
Oth Sts	135	135	90	100	57	66	85	90	367	391
US	425	430	490	420	407	401	325	295	1,647	1,546
	During November									
	Under 600		600-699		700-799		800 Plus		Total	
	2008	2009	2008	2009	2008	2009	2008	2009	2008	2009
	<i>1,000 Head</i>	<i>1,000 Head</i>	<i>1,000 Head</i>	<i>1,000 Head</i>	<i>1,000 Head</i>	<i>1,000 Head</i>	<i>1,000 Head</i>	<i>1,000 Head</i>	<i>1,000 Head</i>	<i>1,000 Head</i>
CO	50	40	55	50	40	35	40	40	185	165
KS	85	70	125	105	120	110	75	70	405	355
NE	110	80	160	140	80	80	90	100	440	400
TX	145	160	180	140	130	100	55	55	510	455
Oth Sts	175	160	110	130	81	*69	110	110	476	*469
US	565	510	630	565	451	*394	370	375	2,016	*1,844

\* Revised.

**Cattle on Feed: Number Marketed, 1,000+ Capacity Feedlots,  
by Month, State, and United States 2008-2009**

State	During Dec 2008	During Nov 2009	During Dec 2009		
			Number	Percent of Previous Year	Percent of Previous Month
	<i>1,000 Head</i>	<i>1,000 Head</i>	<i>1,000 Head</i>	<i>Percent</i>	<i>Percent</i>
AZ	29	22	25	86	114
CA	60	53	59	98	111
CO	155	140	155	100	111
ID	39	*43	35	90	81
IA	64	85	73	114	86
KS	405	340	445	110	131
NE	340	380	350	103	92
NM	18	(D)	(D)	(D)	(D)
OK	46	53	58	126	109
SD	37	35	36	97	103
TX	405	405	410	101	101
WA	38	29	34	89	117
Oth Sts <sup>1</sup>	47	50	62	(X)	124
US	1,683	*1,635	1,742	104	107

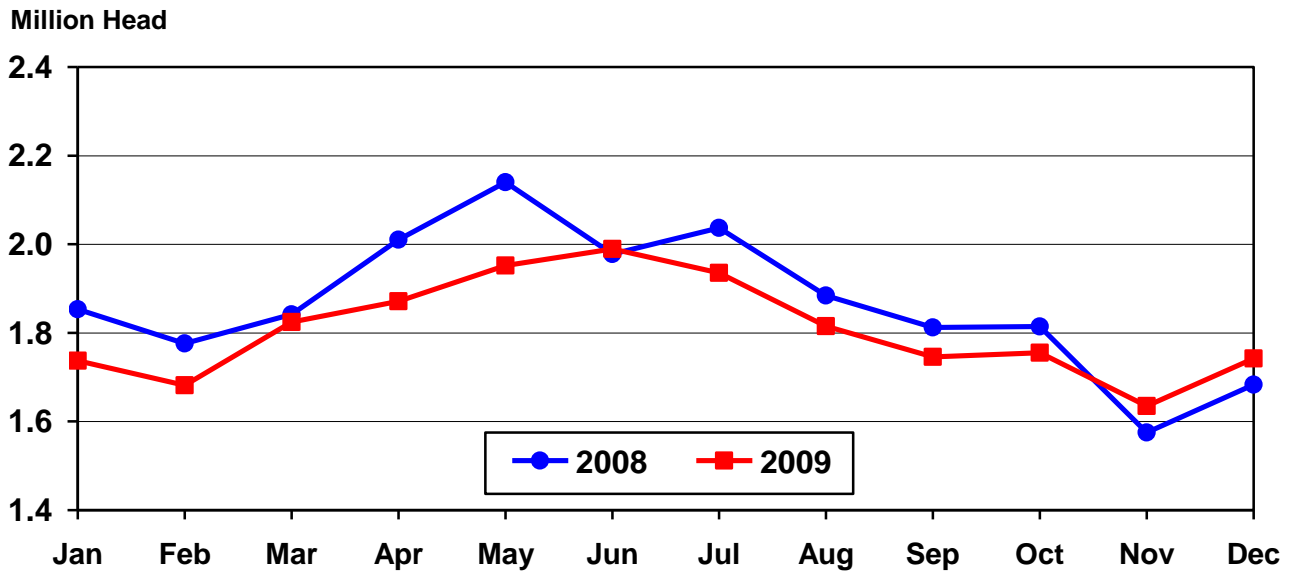
\* Revised.

(D) Withheld to avoid disclosing data for individual operations.

(X) Comparison to 2008 is not applicable.

<sup>1</sup> Includes unpublished New Mexico totals for 2009.

## United States Cattle on Feed 1,000+ Capacity Feedlots Number Marketed



**Cattle on Feed: Other Disappearance, 1,000+ Capacity Feedlots,  
by Month, State, and United States 2008-2009**

State	During Dec 2008	During Nov 2009	During Dec 2009		
			Number	Percent of Previous Year	Percent of Previous Month
	<i>1,000 Head</i>	<i>1,000 Head</i>	<i>1,000 Head</i>	<i>Percent</i>	<i>Percent</i>
AZ	1	1	1	100	100
CA	4	2	4	100	200
CO	5	5	5	100	100
ID	2	1	1	50	100
IA	2	3	2	100	67
KS	15	15	10	67	67
NE	15	10	20	133	200
NM	2	(D)	(D)	(D)	(D)
OK	3	4	2	67	50
SD	1	2	2	200	100
TX	20	20	20	100	100
WA	2	1	1	50	100
Oth Sts <sup>1</sup>	4	2	4	(X)	200
US	76	66	72	95	109

(D) Withheld to avoid disclosing data for individual operations.

(X) Comparison to 2008 is not applicable.

<sup>1</sup> Includes unpublished New Mexico totals for 2009.

**Cattle on Feed: Number on Feed by Class, 1,000+ Capacity Feedlots,  
by Quarter, State, and United States, 2009-2010**

State	Steers & Steer Calves			Heifers & Heifer Calves			Cows and Bulls		
	Jan 1, 2009	Oct 1, 2009	Jan 1, 2010	Jan 1, 2009	Oct 1, 2009	Jan 1, 2010	Jan 1, 2009	Oct 1, 2009	Jan 1, 2010
	<i>1,000 Head</i>	<i>1,000 Head</i>	<i>1,000 Head</i>	<i>1,000 Head</i>	<i>1,000 Head</i>	<i>1,000 Head</i>	<i>1,000 Head</i>	<i>1,000 Head</i>	<i>1,000 Head</i>
AZ	357	272	285	1	1	3	0	2	0
CA	440	410	410	50	55	53	0	0	2
CO	610	650	650	385	305	355	5	5	5
ID	118	113	120	97	91	90	5	1	5
IA	345	365	380	155	155	190	0	0	0
KS	1,210	1,210	1,250	1,045	1,005	990	15	5	10
NE	1,460	1,240	1,440	900	915	910	10	15	10
NM	89	(D)	(D)	75	(D)	(D)	0	(D)	(D)
OK	215	215	220	120	140	145	0	0	0
SD	107	100	115	92	81	92	21	14	28
TX	1,770	1,520	1,650	1,018	1,079	1,029	2	1	1
WA	95	87	94	61	59	71	1	1	1
Oth Sts <sup>1</sup>	255	234	263	101	126	141	4	2	1
US	7,071	6,416	6,877	4,100	4,012	4,069	63	46	63

(D) Withheld to avoid disclosing data for individual operations.

<sup>1</sup> Includes unpublished New Mexico totals for Oct. 2009 and Jan. 2010.

## Terms and Definitions of Cattle on Feed Estimates

**Cattle on feed** are animals being fed a ration of grain, silage, hay and/or protein supplement for slaughter market that are expected to produce a carcass that will grade select or better. It excludes cattle being "backgrounded only" for later sale as feeders or later placement in another feedlot.

**Placements** are cattle put into a feedlot, fed a ration which will produce a carcass that will grade select or better, and are intended for the slaughter market.

**Marketings** are cattle shipped out of feedlots to a slaughter market.

**Other disappearance** includes death loss, movement from feedlots to pasture, and shipments to other feedlots for further feeding.

## Reliability of Cattle on Feed Estimates

**Survey Procedures:** During January and July all known feedlots in the U.S. with capacity of 1,000 or more head are surveyed to provide data for cattle on feed estimates. During the other months, all known feedlots from 16 States are surveyed. The 16 States account for 98 percent of the cattle on feed in feedlots with capacity of 1,000 or more head.

**Estimating Procedures:** These cattle on feed estimates were prepared by the Agricultural Statistics Board after reviewing recommendations and analysis submitted by each State office. Regional and State survey data were reviewed for reasonableness with each other and with estimates from the previous month when setting the current estimates.

**Revision Policy:** Revisions to previous estimates are made to improve month to month relationships. Estimates for the previous month are subject to revision in all States each month when current estimates are made. In February, all monthly estimates for the previous year, and the number of feedlots and annual marketings from two years ago are reviewed and subject to revisions. The reviews are primarily based on slaughter data, state check-off or brand data, and any other data that may have been received after the original estimate was made. Estimates will also be reviewed after data from the Census of Agriculture are available. No revisions will be made after that date and estimates become final.

**Reliability:** Since all 1,000+ capacity cattle on feed operators in every State are not included in the monthly survey, survey estimates are subject to sampling variability. Survey results are also subject to non-sampling errors such as omissions, duplications, and mistakes in reporting, recording, and processing the data. The effects of these errors cannot be measured directly. They are minimized through rigid quality controls in the data collection process and through a careful review of all reported data for consistency and reasonableness.

To assist users in evaluating the reliability of estimates in this report, the "**Root Mean Square Error**" is shown for selected items in the following table. The "Root Mean Square Error" is a statistical measure based on past performance and is computed using the differences between first and latest estimates. The "Root Mean Square Error" for cattle on feed inventory estimates over the past 24 months is less than 0.1 percent (0.04). This means that chances are 2 out of 3 that the final estimate will not be above or below the current estimate of 11.0 million head by more than 0.04 percent. Chances are 9 out of 10 that the difference will not exceed 0.1 percent.



The following table also shows a 24 month record of the range of differences between first and latest estimates for selected items. Using estimates of number on feed as an example, changes between the first estimate and the latest estimate during the past 24 months have averaged 1,000 head, ranging from 0 to 10,000 head. During this period the initial estimate has been above the final estimate 4 times and has been below the final estimate 3 times. This does not imply that the initial estimate is likely to understate or overstate final inventory.

**Reliability of Monthly Cattle on Feed Estimates <sup>1</sup>**

Item	Root Mean Square Error	90% Confidence Level		Difference Between First and Final Estimates			Number of Months	
		Percent	(000) Head	Average	Smallest	Largest	First Above Final	First Below Final
	<i>Percent</i>	<i>Percent</i>	<i>1,000 Head</i>	<i>1,000 Head</i>	<i>1,000 Head</i>	<i>1,000 Head</i>	<i>Number</i>	<i>Number</i>
Number on Feed	0.0	0.1	11.0	1	0	10	4	3
Placements	0.1	0.2	3.1	1	0	6	2	5
Marketings	0.2	0.3	5.2	2	0	7	3	5

<sup>1</sup> Based on data for the past 24 months.

### Information Contacts

Listed below are the commodity specialists in the Livestock Branch of the National Agricultural Statistics Service to contact for additional information.

Dan Kerestes, Chief, Livestock Branch ..... (202) 720-3570

#### Livestock Section

Scott Hollis, Head, Livestock Section ..... (202) 690-2424  
 Jim Collom - Dairy Products ..... (202) 690-3236  
 Joe Gaynor - Dairy Products Prices ..... (202) 690-2168  
 Jason Hardegree - Cattle, Cattle on Feed ..... (202) 720-3040  
 Sherry Bertramsen - Livestock Slaughter ..... (515) 284-4340  
 Everett Olbert - Sheep and Goats ..... (202) 720-4751  
 Mike Miller - Milk Production and Milk Cows ..... (202) 720-3278  
 Nick Streff - Hogs and Pigs ..... (202) 720-3106

## ACCESS TO REPORTS!!

---

For your convenience, there are several ways to obtain NASS reports, data products, and services:

### INTERNET ACCESS

All NASS reports are available free of charge. For free access, connect to the Internet and go to the NASS Home Page at: [www.nass.usda.gov](http://www.nass.usda.gov).

### E-MAIL SUBSCRIPTION

All NASS reports are available by subscription free of charge direct to your e-mail address. Starting with the NASS Home Page at [www.nass.usda.gov](http://www.nass.usda.gov), under the right navigation, *Receive reports by Email*, click on **National** or **State**. Follow the instructions on the screen.

-----

### PRINTED REPORTS OR DATA PRODUCTS

**CALL OUR TOLL-FREE ORDER DESK: 800-999-6779 (U.S. and Canada)**  
**Other areas, please call 703-605-6220      FAX: 703-605-6880**  
**(Visa, MasterCard, check, or money order acceptable for payment.)**

-----

### ASSISTANCE

For **assistance** with general agricultural statistics or further information about NASS or its products or services, contact the **Agricultural Statistics Hotline** at **800-727-9540**, 7:30 a.m. to 4:00 p.m. ET, or e-mail: [nass@nass.usda.gov](mailto:nass@nass.usda.gov).

The U.S. Department of Agriculture (USDA) prohibits discrimination in all its programs and activities on the basis of race, color, national origin, age, disability, and where applicable, sex, marital status, familial status, parental status, religion, sexual orientation, genetic information, political beliefs, reprisal, or because all or a part of an individual's income is derived from any public assistance program. (Not all prohibited bases apply to all programs.) Persons with disabilities who require alternative means for communication of program information (Braille, large print, audiotape, etc.) should contact USDA's TARGET Center at (202) 720-2600 (voice and TDD).

To file a complaint of discrimination, write to USDA, Director, Office of Civil Rights, 1400 Independence Avenue, S.W., Washington, D.C. 20250-9410, or call (800) 795-3272 (voice) or (202) 720-6382 (TDD). USDA is an equal opportunity provider and employer.



## **Sustainable Agriculture**

The Key to Health and Prosperity

**February 18 – 19, 2010**

Crystal Gateway Marriott Hotel  
1700 Jefferson Davis Highway  
Arlington, Virginia

**[www.usda.gov/oce/forum](http://www.usda.gov/oce/forum)**

Early Bird Registration \$350 until January 15, 2010 \* \$375 after January 15

*Topical Sessions Cover:*

- \*Rural Communities
- \*Nutrition
- \*Risk Management
- \*Conservation
- \*Organics & Sustainability
- \*Climate Change
- \*Food Security & Safety
- \*World Commerce
- \* Energy

**and the traditional Food Price, Farm Income, and Commodity Outlook Sessions**