

Survey of Occupational Injuries and Illnesses



Report on the Days of Job Transfer or Restriction Pilot Study—

**New data on case circumstances and worker
characteristics, 2011**

April 2013

**Prepared by Staff of the Occupational Safety and Health Statistics Program
Survey of Occupational Injuries and Illnesses**

202-691-6170

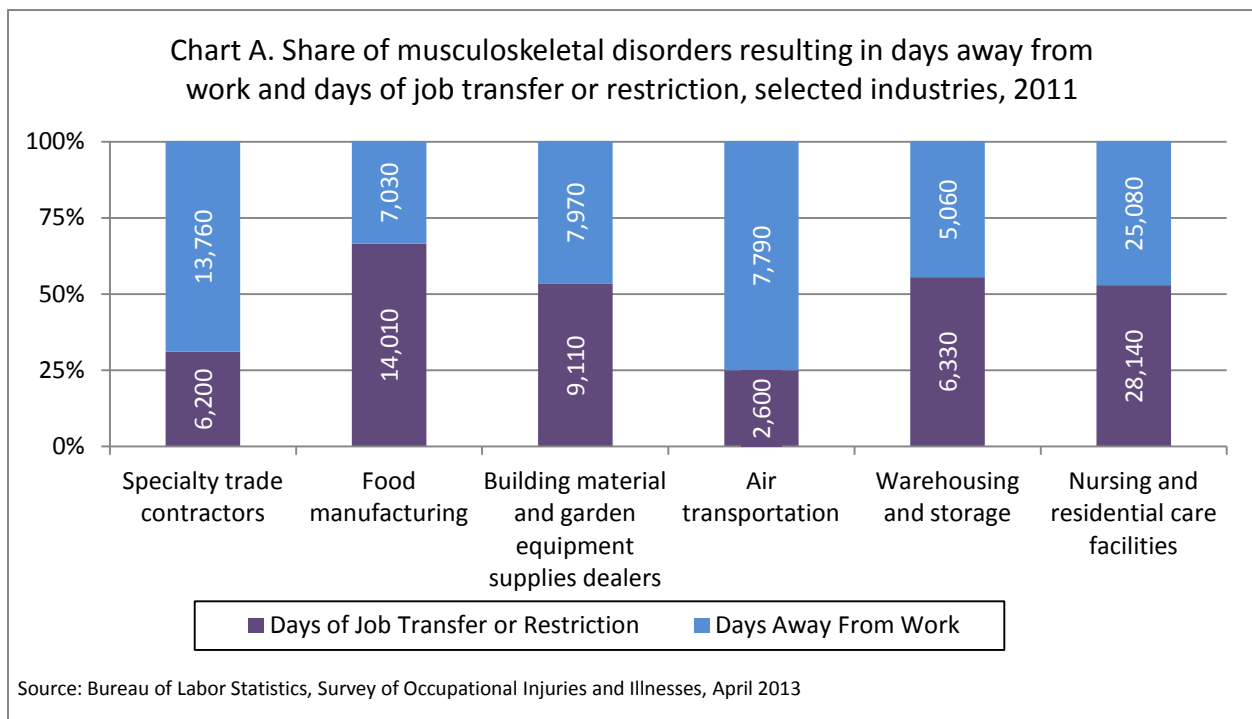
iifstaff@bls.gov

BLS Survey of Occupational Injuries and Illnesses 2011
Days of Job Transfer or Restriction Pilot Study Results

Introduction

In 2011, the majority of the musculoskeletal disorders (MSD) that required days away from work, job transfer or restriction (DART) in food manufacturing; building material and garden equipment and supplies dealers; warehousing and storage; and nursing and residential care facilities resulted in days of job transfer or restriction (DJTR) without any days away from work. (See chart A.) These data are from a special pilot study issued by the U.S. Bureau of Labor Statistics (BLS) Survey of Occupational Injuries and Illnesses (SOII) on the details of case circumstances and worker characteristics for occupational injury and illness cases that resulted in days of job transfer or restriction. These data are available for the first time for 2011 for six private industry sub-sectors (*North American Industry Classification System, 2007*) selected for this BLS pilot study:

- Specialty trade contractors (NAICS 238)
- Food manufacturing (NAICS 311)
- Building material and garden equipment and supplies dealer (NAICS 444)
- Air transportation (NAICS 481)
- Warehousing and storage (NAICS 493)
- Nursing and residential care facilities (NAICS 623)

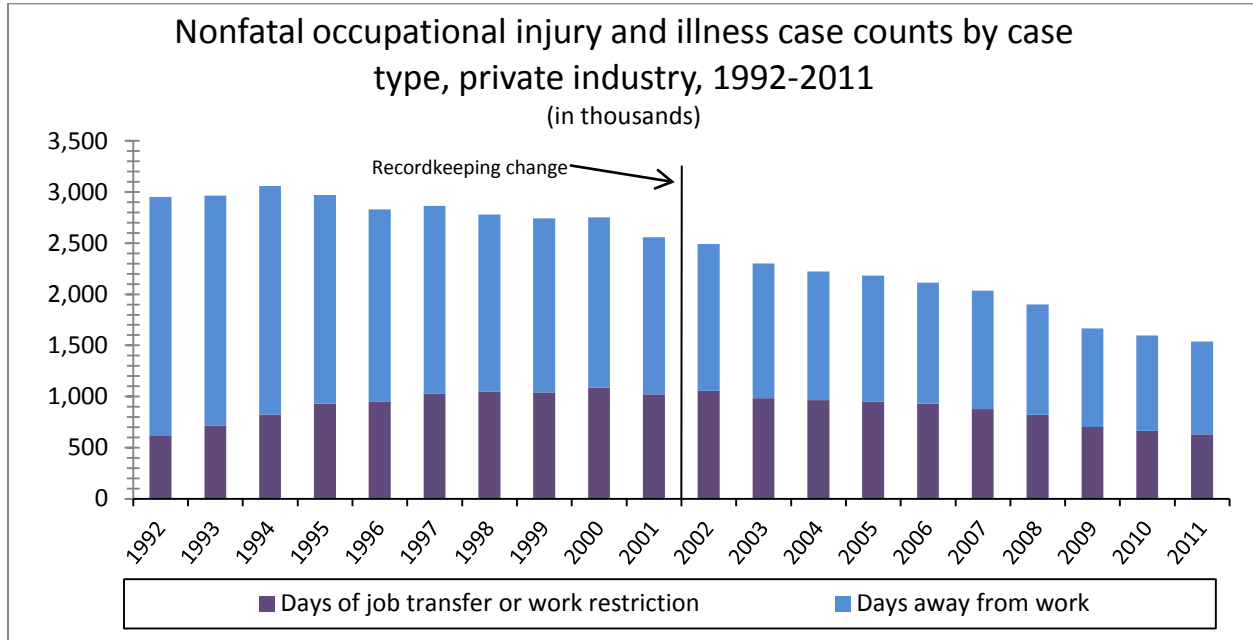


The BLS has reported case circumstances and worker characteristics since 1992 for days away from work (DAFW) injury and illness cases, but not for the less serious DJTR cases. DAFW and DJTR cases together are referred to as DART cases—days away from work, job transfer or restriction. DART cases plus other recordable cases (ORC), those with neither days away from work or work restriction, are components of total recordable cases (TRC). (See the BLS Handbook of Methods Chapter 9 for additional background information: www.bls.gov/opub/hom/homch9.htm).

In 1992, DJTR cases accounted for a relatively small share of DART cases—21 percent were DJTR cases while 79 percent were the more serious DAFW cases. (See chart B.) By 2011, the share of DJTR cases had nearly doubled to 41 percent of DART cases. This BLS pilot study was conducted to provide case circumstances and worker characteristics associated with DJTR cases. Although DJTR cases have become a larger share of DART cases in recent years, no national data on the details for DJTR cases have

BLS Survey of Occupational Injuries and Illnesses 2011
Days of Job Transfer or Restriction Pilot Study Results

been available. This pilot study is an effort to better understand these cases and any questions that may arise. For example, are the kinds of DJTR injuries and illnesses different from the DAFW injuries and illnesses, or are they the same kinds of injuries and illnesses managed differently? For additional background on DJTR see “Restricted work due to workplace injuries: a historical perspective” by John W. Ruser and William J. Wiatrowski at <http://www.bls.gov/opub/mlr/2013/03/art3full.pdf>.



Summary highlights of findings

- Sprains, strains, and tears was the leading nature of injury or illness for DJTR cases in each of the six selected industries. In food manufacturing; building material and garden equipment and supplies dealers; warehousing and storage; and nursing and residential care facilities, more sprains, strains, and tears resulted in job transfer or work restriction than days away from work. (See table 1.)
- The median days of job transfer or restriction ranged from 10 days in specialty trade contractors to 15 days in food manufacturing. Injuries resulting in fractures required a median of 30 days or more in job transfer or restriction status in each of the six pilot industries. (See table 4.)
- The leading event or exposure for DJTR cases was overexertion and bodily reaction for each of the industries except for specialty trade contractors where it was contact with objects or equipment. The second leading event or exposure was contact with objects or equipment except in nursing and residential care facilities and specialty trade contractors. In nursing and residential care facilities, falls, slips, and trips was the second leading event. These patterns for DJTR cases are similar to that of DAFW cases. (See table 1.)
- Men and women each had a greater number of DJTR cases than DAFW cases in food manufacturing. Women also had a greater number of DJTR cases than DAFW cases in building and garden equipment and supplies dealers; and warehousing and storage. (See table 2.)
- The distribution of DJTR and DAFW cases among the major occupation groups for five of the industries followed similar patterns. However, in air transportation, 79 percent of the DJTR cases occurred to office and administrative workers while 48 percent of DAFW cases occurred to this occupation group. (See table 2.)

Industry highlights

The results of this pilot study do not represent all industries; however, they do provide national data for the industries in the pilot. For this reason, data are presented only by the respective industries and not as a national aggregate total.

Specialty trade contractors

There were 18,090 cases with days of job transfer or restriction in the specialty trade contractors industry in 2011. (See table 1.) DJTR cases accounted for 27 percent of the DART cases and occurred at a rate of 60.5 cases per 10,000 full-time workers. The median days of job transfer or restriction for this industry was 10 days. (See tables 1 and 4.)

The leading nature of injury or illness for DJTR cases was sprains, strains, and tears accounting for 40 percent of the total DJTR cases in this industry. (See table 1.) However, 33 percent of the sprains, strains, and tears cases resulted in job transfer or restriction, while the remainder resulted in cases with days away from work. (See table 1 and 4.)

The three leading event or exposures for DJTR cases in this industry were contact with objects or equipment; overexertion and bodily reaction; and falls, slips, and trips. This followed the same pattern as DAFW cases. Workers who sustained injuries from overexertion and bodily reaction were put on job transfer or restriction status for a median of 12 days compared to a median of 7 days for contact with objects or equipment. (See table 4.)

Food manufacturing

There were 29,880 cases involving days of job transfer or restriction in food manufacturing in 2011. DJTR cases accounted for 59 percent of the cases of days away from work, job transfer or restriction (DART) and occurred at a rate of 207.7 cases per 10,000 full-time workers. The median days of job transfer or restriction for this industry was 15 days. (See tables 1 and 4.)

Musculoskeletal disorders (MSD) contributed a large share (47 percent) of total DJTR cases for food manufacturing as a whole with 14,010 MSD incidents. Of the total DART cases that were attributed to MSDs, 67 percent resulted in job transfer or restriction only without any days away from work. (See table 1.) The median number of days of job transfer or restriction for DJTR cases involving MSDs was 21. (See table 4.)

Both the carpal tunnel syndrome (48 days) and tendonitis (40 days) natures had relatively high median days of job transfer or restriction. Other natures with DJTR medians exceeding 30 days were severe traumatic injuries: fractures (36) and amputations (41). (See table 4.)

Hispanic or Latino and non-Hispanic white workers each accounted for 29 percent of the DJTR cases in 2011. For Hispanic workers, 62 percent of the DART cases resulted in job transfer or restriction while for non-Hispanic white workers, 53 percent resulted in a DJTR case. (See table 2.)

BLS Survey of Occupational Injuries and Illnesses 2011
Days of Job Transfer or Restriction Pilot Study Results

Building material and garden equipment and supplies dealers

There were 17,800 cases involving days of job transfer or restriction in the building material and garden equipment and supplies dealers industry in 2011. DJTR cases accounted for 51 percent of the DART cases and occurred at a rate of 176.2 cases per 10,000 full-time workers. The median days of job transfer or restriction for this industry was 14 days. (See tables 1 and 4.)

The leading nature of injury or illness for DJTR cases was sprains, strains, or tears with 10,840 cases in the building material and garden equipment and supplies dealers industry. This was larger than the number of DAFW cases with sprains, strains, and tears (8,700 cases). (See table 1.)

Sales and related workers and office and administrative workers had higher counts of DJTR cases compared to DAFW cases. (See table 2.) Transportation and material moving workers had a lower number of DJTR cases (4,170) compared to DAFW cases (5,080).

Air transportation

There were 4,410 cases involving days of job transfer or restriction (DJTR) in the air transportation industry in 2011. DJTR cases accounted for 22 percent of DART cases and occurred at a rate of 120.0 cases per 10,000 full-time workers. The median days of job transfer or restriction for this industry was 12 days. (See tables 1 and 4.)

Office and administrative support workers had 79 percent (3,480 cases) of the DJTR cases but only 48 percent (7,550) of the DAFW cases. However, transportation and material moving workers had 40 percent (6,260) of DAFW cases and 10 percent (450) of DJTR cases. (See table 2.)

Warehousing and storage

There were 11,320 cases involving days of job transfer or restriction in the warehousing and storage industry in 2011. DJTR cases accounted for 51 percent of DART cases and occurred at a rate of 193.5 cases per 10,000 full-time workers. The median days of job transfer or restriction for this industry was 13 days. (See tables 1 and 4.)

The leading event or exposure for DJTR cases in this industry was overexertion and bodily reaction with 6,490 cases, and was also a greater number than DAFW cases (5,220). The second leading event or exposure leading to a DJTR case was contact with objects or equipment. For contact with objects or equipment and falls, slips, and trips cases, the number of DJTR cases were either the same or fewer than DAFW cases. (See table 1.)

Nursing and residential care facilities

There were 53,650 cases involving days of job transfer or restriction in the nursing and residential care facilities industry in 2011. DJTR cases accounted for 47 percent of the DART cases and occurred at a rate of 222.2 cases per 10,000 full-time workers. The median days of job transfer or restriction for this industry was 12 days. (See tables 1 and 4.)

Sprains, strains, and tears was the leading type of injury or illness for both DAFW and DJTR cases. However, the number of DJTR cases for these types of injuries was greater than the number of DAFW cases. This same pattern followed with the event or exposure category overexertion and bodily reaction where there were 29,240 DJTR cases and 26,250 DAFW cases. For most other event or exposure categories in this industry, there were fewer DJTR cases than DAFW cases. (See table 1.)

BLS Survey of Occupational Injuries and Illnesses 2011
Days of Job Transfer or Restriction Pilot Study Results

Workers age 35 and older had fewer DJTR cases than DAFW cases. However, workers age 16 to 34 had the same (statistically) number of DJTR cases as they did DAFW cases. (See table 2.)

Background of the pilot study

This pilot study was conducted to learn more about the case circumstances and worker characteristics of days-of-job-transfer-or-restriction cases collected by the BLS Survey of Occupational Injuries and Illnesses. Six private industry sub-sectors were selected for the pilot: specialty trade contractors; food manufacturing; building material and garden equipment and supplies dealers; air transportation; warehousing and storage; and nursing and residential care facilities. The study was designed in such a way as to work within the constraints of existing resources in collecting SOII data. Rather than design and conduct an entirely separate survey, the pilot study was integrated with the existing SOII survey data collection and processing. Additionally, the number and incidence rate of DJTR cases in each industry sub-sector was taken into consideration. In the normal SOII survey, establishments are asked to provide data on three broad categories of nonfatal OSHA recordable injuries and illnesses:

- Cases with days away from work (which may also have cases with days of job transfer or restriction)
- Cases with only job transfer or restricted work
- Other recordable cases (with neither days away from work nor days of job transfer or restriction)

In the past, survey respondents were asked to provide summary information about each of the broad categories and detailed narrative information about the cases with days away from work. For the pilot study, establishments in the selected industries were asked to also provide detailed narrative information on their cases with only job transfer or restricted work. This pilot study will continue with data collection and dissemination for 2012 and 2013. Additional details about the survey methodology can be found in the BLS Handbook of Methods Chapter 9: www.bls.gov/opub/hom/homch9.htm.

This report does not present all the publishable estimates and rates for days-of-job-transfer-or-restriction cases. Additional detailed data and charts are available from BLS staff at (202) 691-6170, iifstaff@bls.gov, and the BLS Internet site: www.bls.gov/iif/oshcdnew.htm.

TABLE 1. Number of nonfatal occupational injuries and illnesses involving days away from work, restricted work activity, or job transfer (DART), days away from work (DAFW)¹, and restricted work activity, or job transfer (DJTR)² by selected industry³ and case characteristics, private industry, 2011

| Case characteristics (MSD, Nature, Event, Part, Source) | Specialty trade contractors | | | Food manufacturing | | | Building material and garden equipment supplies dealers | | |
|--|-----------------------------|--------------------------------|--|--------------------|--------------------------------|--|---|--------------------------------|--|
| | Total ⁴ | Cases with days away from work | Cases with job transfer or restriction | Total ⁴ | Cases with days away from work | Cases with job transfer or restriction | Total ⁴ | Cases with days away from work | Cases with job transfer or restriction |
| Total | 66,630 | 48,540 | 18,090 | 50,830 | 20,950 | 29,880 | 35,090 | 17,290 | 17,800 |
| Musculoskeletal disorders⁵ | 19,960 | 13,760 | 6,200 | 21,040 | 7,030 | 14,010 | 17,080 | 7,970 | 9,110 |
| Nature of injury or illness: | | | | | | | | | |
| Fractures | 7,410 | 6,130 | 1,270 | 3,080 | 1,780 | 1,300 | 1,960 | 1,310 | 650 |
| Sprains, strains, tears | 22,100 | 14,900 | 7,200 | 17,190 | 6,270 | 10,930 | 19,540 | 8,700 | 10,840 |
| Amputations | 190 | 120 | 80 | 590 | 490 | 100 | 240 | 240 | – |
| Cuts, lacerations, punctures | 10,790 | 6,750 | 4,040 | 5,670 | 1,960 | 3,710 | 3,450 | 1,450 | 2,010 |
| Cuts, lacerations | 9,660 | 6,060 | 3,600 | 5,320 | 1,750 | 3,570 | 3,000 | 1,240 | 1,770 |
| Punctures (except gunshot wounds) | 1,130 | 690 | 440 | 350 | 220 | 140 | 450 | 210 | 240 |
| Bruises, contusions | 4,440 | 2,990 | 1,460 | 5,050 | 1,970 | 3,080 | 4,360 | 1,890 | 2,470 |
| Chemical burns and corrosions | 160 | 110 | 50 | 410 | 280 | 130 | 30 | 20 | – |
| Heat (thermal) burns | 890 | 840 | 50 | 710 | 380 | 330 | 20 | – | – |
| Multiple traumatic injuries | 2,380 | 2,010 | 370 | 1,470 | 800 | 670 | 430 | 310 | 120 |
| With sprains and other injuries | 790 | 640 | 150 | 690 | 310 | 390 | 70 | 40 | 30 |
| With fractures and other injuries | 820 | 740 | 80 | 250 | 150 | 100 | 90 | 80 | – |
| Soreness, pain | 7,760 | 5,980 | 1,780 | 6,990 | 2,310 | 4,670 | 1,710 | 990 | 720 |
| Carpal tunnel syndrome | 180 | 170 | – | 950 | 480 | 470 | 80 | 70 | – |
| Tendonitis | 350 | 190 | 170 | 880 | 120 | 770 | 20 | 20 | – |
| All other natures | 9,970 | 8,350 | 1,620 | 7,830 | 4,090 | 3,730 | 3,240 | 2,280 | 960 |
| Event or exposure leading to injury or illness: | | | | | | | | | |
| Violence and other injuries by persons or animal | 530 | 450 | 70 | 290 | 70 | 220 | 310 | 200 | 120 |
| Intentional injury by other person | 80 | 80 | – | 30 | – | 20 | 30 | – | 20 |
| Injury by person unintentional or intent unknown | – | – | – | 100 | – | 90 | 80 | 40 | 40 |
| Animal and insect related incidents | 430 | 370 | 60 | 160 | 50 | 110 | 200 | 150 | 60 |
| Transportation incidents | 2,210 | 1,930 | 280 | 970 | 550 | 410 | 670 | 520 | 150 |
| Roadway incidents involving motorized land vehicles | 1,620 | 1,420 | 200 | 200 | 140 | 50 | 280 | 260 | 20 |
| Fires and explosions | 230 | 220 | 20 | 40 | 30 | – | – | – | – |
| Falls, slips, trips | 16,710 | 13,320 | 3,390 | 9,880 | 4,900 | 4,970 | 6,020 | 3,460 | 2,560 |
| Slips, trips without fall | 2,630 | 1,950 | 680 | 1,540 | 710 | 830 | 990 | 400 | 590 |
| Fall on same level | 4,860 | 3,600 | 1,260 | 6,310 | 3,030 | 3,280 | 3,380 | 2,010 | 1,380 |
| Fall to lower level | 8,310 | 7,090 | 1,220 | 1,660 | 980 | 680 | 1,550 | 1,000 | 540 |
| Exposure to harmful substances or environments | 2,650 | 2,470 | 180 | 1,960 | 1,280 | 670 | 270 | 220 | 50 |
| Contact with object, equipment | 22,760 | 15,090 | 7,670 | 15,410 | 6,530 | 8,880 | 10,290 | 4,670 | 5,620 |
| Struck by object or equipment | 13,020 | 8,510 | 4,510 | 7,160 | 3,000 | 4,160 | 6,780 | 3,040 | 3,740 |
| Struck against object or equipment | 5,380 | 3,470 | 1,900 | 3,510 | 1,270 | 2,240 | 2,040 | 1,010 | 1,030 |
| Caught in or compressed by object or equipment | 2,870 | 1,880 | 990 | 4,090 | 1,970 | 2,120 | 1,100 | 400 | 700 |
| Overexertion and bodily reaction | 21,200 | 14,760 | 6,440 | 21,750 | 7,370 | 14,390 | 17,430 | 8,210 | 9,230 |
| Overexertion in lifting or lowering | 7,790 | 5,780 | 2,010 | 5,430 | 2,270 | 3,160 | 8,440 | 3,920 | 4,520 |
| Repetitive motion involving microtasks | 1,190 | 720 | 460 | 7,020 | 1,610 | 5,420 | 360 | 180 | 180 |
| All other events or exposures | 340 | 290 | 50 | 540 | 210 | 340 | 90 | 20 | 80 |
| Part of body affected by the injury or illness: | | | | | | | | | |
| Head | 4,200 | 3,540 | 660 | 2,220 | 1,350 | 870 | 1,980 | 1,510 | 470 |

See footnotes at end of table.

TABLE 1. Number of nonfatal occupational injuries and illnesses involving days away from work, restricted work activity, or job transfer (DART), days away from work (DAFW)¹, and restricted work activity, or job transfer (DJTR)² by selected industry³ and case characteristics, private industry, 2011 — Continued

| Case characteristics (MSD, Nature, Event, Part, Source) | Air transportation | | | Warehousing and storage | | | Nursing and residential care facilities | | |
|--|--------------------|--------------------------------|--|-------------------------|--------------------------------|--|---|--------------------------------|--|
| | Total ⁴ | Cases with days away from work | Cases with job transfer or restriction | Total ⁴ | Cases with days away from work | Cases with job transfer or restriction | Total ⁴ | Cases with days away from work | Cases with job transfer or restriction |
| Total | 20,150 | 15,750 | 4,410 | 22,110 | 10,790 | 11,320 | 113,050 | 59,400 | 53,650 |
| Musculoskeletal disorders⁵ | 10,390 | 7,790 | 2,600 | 11,390 | 5,060 | 6,330 | 53,230 | 25,080 | 28,140 |
| Nature of injury or illness: | | | | | | | | | |
| Fractures | 760 | 720 | 40 | 800 | 580 | 230 | 3,400 | 2,680 | 720 |
| Sprains, strains, tears | 11,410 | 8,590 | 2,820 | 10,760 | 4,860 | 5,900 | 59,480 | 28,020 | 31,470 |
| Amputations | — | — | — | 40 | 40 | — | 60 | 40 | 20 |
| Cuts, lacerations, punctures | 640 | 460 | 180 | 1,400 | 510 | 900 | 3,550 | 1,850 | 1,700 |
| Cuts, lacerations | 590 | 430 | 160 | 1,200 | 410 | 790 | 2,950 | 1,540 | 1,420 |
| Punctures (except gunshot wounds) | 50 | 30 | 20 | 200 | 100 | 110 | 600 | 310 | 290 |
| Bruises, contusions | 2,550 | 1,980 | 570 | 2,510 | 1,230 | 1,280 | 10,830 | 5,540 | 5,280 |
| Chemical burns and corrosions | — | — | — | 60 | 60 | — | 160 | 110 | 50 |
| Heat (thermal) burns | — | — | — | 20 | — | — | 1,080 | 690 | 390 |
| Multiple traumatic injuries | 200 | 160 | 40 | 460 | 270 | 190 | 3,470 | 1,650 | 1,820 |
| With sprains and other injuries | 110 | 80 | 30 | 270 | 170 | 100 | 2,390 | 930 | 1,460 |
| With fractures and other injuries | 20 | 20 | — | 40 | 30 | — | 220 | 150 | 60 |
| Soreness, pain | 1,410 | 1,140 | 270 | 3,200 | 1,420 | 1,780 | 18,160 | 10,130 | 8,020 |
| Carpal tunnel syndrome | 50 | 50 | — | 100 | 80 | 20 | 90 | 70 | 30 |
| Tendonitis | — | — | — | 170 | 80 | 90 | 290 | 110 | 180 |
| All other natures | 3,100 | 2,620 | 480 | 2,600 | 1,680 | 920 | 12,480 | 8,500 | 3,980 |
| Event or exposure leading to injury or illness: | | | | | | | | | |
| Violence and other injuries by persons or animal | 340 | 310 | 30 | 60 | 40 | 20 | 15,370 | 8,370 | 7,010 |
| Intentional injury by other person | 70 | 50 | — | — | — | — | 7,800 | 4,240 | 3,550 |
| Injury by person unintentional or intent unknown | 40 | 40 | — | — | — | — | 6,760 | 3,480 | 3,280 |
| Animal and insect related incidents | 190 | 180 | — | 50 | 30 | — | 620 | 560 | 60 |
| Transportation incidents | 890 | 850 | 50 | 1,070 | 560 | 520 | 1,160 | 880 | 280 |
| Roadway incidents involving motorized land vehicles | 100 | 100 | — | 170 | 110 | 60 | 850 | 680 | 170 |
| Fires and explosions | — | — | — | 20 | 20 | — | 20 | 20 | — |
| Falls, slips, trips | 2,790 | 2,290 | 500 | 3,070 | 1,720 | 1,350 | 24,910 | 15,140 | 9,760 |
| Slips, trips without fall | 760 | 520 | 250 | 580 | 330 | 250 | 3,440 | 1,960 | 1,480 |
| Fall on same level | 1,500 | 1,310 | 190 | 1,760 | 940 | 820 | 19,160 | 11,690 | 7,480 |
| Fall to lower level | 450 | 410 | 40 | 600 | 370 | 230 | 1,270 | 860 | 410 |
| Exposure to harmful substances or environments | 640 | 600 | 40 | 280 | 220 | 50 | 2,570 | 1,920 | 650 |
| Contact with object, equipment | 4,720 | 3,610 | 1,110 | 5,650 | 2,840 | 2,820 | 12,670 | 6,480 | 6,190 |
| Struck by object or equipment | 2,450 | 1,880 | 580 | 3,140 | 1,500 | 1,640 | 7,100 | 3,740 | 3,360 |
| Struck against object or equipment | 1,320 | 940 | 380 | 1,240 | 580 | 650 | 3,550 | 1,820 | 1,720 |
| Caught in or compressed by object or equipment | 730 | 590 | 140 | 990 | 600 | 390 | 1,550 | 640 | 910 |
| Overexertion and bodily reaction | 10,750 | 8,070 | 2,680 | 11,710 | 5,220 | 6,490 | 55,490 | 26,250 | 29,240 |
| Overexertion in lifting or lowering | 4,890 | 3,460 | 1,440 | 5,130 | 2,290 | 2,840 | 16,990 | 8,080 | 8,910 |
| Repetitive motion involving microtasks | 360 | 240 | 120 | 1,120 | 580 | 550 | 790 | 400 | 390 |
| All other events or exposures | — | — | — | 250 | 170 | 80 | 860 | 350 | 510 |
| Part of body affected by the injury or illness: | | | | | | | | | |
| Head | 1,500 | 1,310 | 190 | 750 | 580 | 170 | 4,170 | 3,370 | 790 |

See footnotes at end of table.

TABLE 1. Number of nonfatal occupational injuries and illnesses involving days away from work, restricted work activity, or job transfer (DART), days away from work (DAFW)¹, and restricted work activity, or job transfer (DJTR)² by selected industry³ and case characteristics, private industry, 2011 — Continued

| Case characteristics (MSD, Nature, Event, Part, Source) | Specialty trade contractors | | | Food manufacturing | | | Building material and garden equipment supplies dealers | | |
|--|-----------------------------|--------------------------------|--|--------------------|--------------------------------|--|---|--------------------------------|--|
| | Total ⁴ | Cases with days away from work | Cases with job transfer or restriction | Total ⁴ | Cases with days away from work | Cases with job transfer or restriction | Total ⁴ | Cases with days away from work | Cases with job transfer or restriction |
| Part of body affected by the injury or illness: | | | | | | | | | |
| Eye(s) | 2,130 | 1,870 | 270 | 960 | 720 | 250 | 430 | 370 | 70 |
| Neck | 500 | 340 | 170 | 360 | 170 | 190 | 540 | 200 | 330 |
| Trunk | 15,310 | 11,100 | 4,210 | 10,780 | 4,990 | 5,800 | 11,460 | 5,900 | 5,570 |
| Back | 11,880 | 8,430 | 3,450 | 8,020 | 3,470 | 4,560 | 9,160 | 4,540 | 4,620 |
| Upper extremities | 25,080 | 16,440 | 8,640 | 25,710 | 8,420 | 17,290 | 11,920 | 4,590 | 7,330 |
| Shoulder | 4,860 | 3,570 | 1,290 | 4,210 | 1,490 | 2,720 | 3,380 | 1,310 | 2,070 |
| Arm | 3,750 | 2,520 | 1,230 | 3,090 | 960 | 2,120 | 2,260 | 860 | 1,400 |
| Wrist | 2,550 | 1,630 | 920 | 4,040 | 1,220 | 2,820 | 1,380 | 480 | 890 |
| Hand | 12,780 | 7,800 | 4,970 | 12,210 | 4,280 | 7,920 | 4,650 | 1,830 | 2,820 |
| Lower extremities | 15,220 | 11,740 | 3,480 | 7,430 | 3,920 | 3,520 | 7,910 | 4,230 | 3,680 |
| Knee | 5,960 | 4,530 | 1,430 | 2,490 | 1,280 | 1,210 | 2,670 | 1,550 | 1,120 |
| Ankle | 3,320 | 2,590 | 730 | 1,680 | 880 | 800 | 1,750 | 950 | 800 |
| Foot | 3,190 | 2,420 | 770 | 1,780 | 890 | 890 | 2,470 | 1,280 | 1,200 |
| Body systems | 980 | 940 | 30 | 340 | 300 | 40 | 290 | 250 | 40 |
| Multiple | 5,060 | 4,210 | 850 | 3,690 | 1,720 | 1,980 | 960 | 590 | 370 |
| All other parts of body | 270 | 210 | 60 | 290 | 90 | 200 | 30 | — | 20 |
| Source of injury or illness: | | | | | | | | | |
| Chemicals and chemical products | 410 | 330 | 80 | 770 | 560 | 210 | 110 | 90 | 20 |
| Containers | 2,990 | 1,980 | 1,010 | 8,820 | 3,540 | 5,290 | 7,040 | 2,980 | 4,060 |
| Furniture and fixtures | 1,230 | 910 | 310 | 1,330 | 600 | 730 | 2,260 | 980 | 1,280 |
| Machinery | 4,720 | 3,640 | 1,080 | 5,530 | 2,450 | 3,080 | 2,820 | 1,120 | 1,710 |
| Parts and materials | 15,170 | 9,480 | 5,680 | 3,280 | 1,250 | 2,030 | 5,940 | 2,880 | 3,060 |
| Person, injured or ill worker | 8,550 | 5,820 | 2,730 | 11,310 | 3,480 | 7,830 | 3,990 | 2,020 | 1,960 |
| Worker motion or position | 8,430 | 5,730 | 2,700 | 11,100 | 3,330 | 7,780 | 3,920 | 1,970 | 1,960 |
| Person, other than injured or ill worker | 120 | 120 | — | 150 | 40 | 110 | 110 | 50 | 60 |
| Floors, walkways, ground surfaces | 6,150 | 4,570 | 1,580 | 6,620 | 3,300 | 3,320 | 3,450 | 2,130 | 1,320 |
| Handtools | 6,340 | 4,420 | 1,920 | 3,170 | 1,090 | 2,080 | 1,890 | 1,000 | 900 |
| Ladder | 4,900 | 4,070 | 830 | 570 | 320 | 240 | 950 | 540 | 410 |
| Vehicles | 4,430 | 3,600 | 830 | 2,950 | 1,570 | 1,380 | 3,040 | 1,690 | 1,350 |
| Trucks | 1,970 | 1,610 | 360 | 520 | 300 | 220 | 770 | 520 | 250 |
| Cart, dolly, hand truck nonpowered | 220 | 110 | 110 | 640 | 320 | 320 | 840 | 350 | 490 |
| All other sources | 11,610 | 9,600 | 2,020 | 6,320 | 2,740 | 3,590 | 3,490 | 1,810 | 1,680 |

See footnotes at end of table.

TABLE 1. Number of nonfatal occupational injuries and illnesses involving days away from work, restricted work activity, or job transfer (DART), days away from work (DAFW)¹, and restricted work activity, or job transfer (DJTR)² by selected industry³ and case characteristics, private industry, 2011 — Continued

| Case characteristics (MSD, Nature, Event, Part, Source) | Air transportation | | | Warehousing and storage | | | Nursing and residential care facilities | | |
|--|--------------------|--------------------------------|--|-------------------------|--------------------------------|--|---|--------------------------------|--|
| | Total ⁴ | Cases with days away from work | Cases with job transfer or restriction | Total ⁴ | Cases with days away from work | Cases with job transfer or restriction | Total ⁴ | Cases with days away from work | Cases with job transfer or restriction |
| Part of body affected by the injury or illness: | | | | | | | | | |
| Eye(s) | 480 | 460 | — | 260 | 190 | 80 | 910 | 740 | 170 |
| Neck | 680 | 470 | 210 | 280 | 130 | 160 | 2,010 | 870 | 1,130 |
| Trunk | 5,730 | 4,610 | 1,110 | 7,180 | 3,420 | 3,760 | 40,340 | 20,970 | 19,380 |
| Back | 4,680 | 3,740 | 940 | 5,770 | 2,590 | 3,180 | 34,620 | 17,450 | 17,170 |
| Upper extremities | 5,940 | 4,270 | 1,670 | 7,530 | 3,090 | 4,430 | 32,620 | 14,520 | 18,090 |
| Shoulder | 2,140 | 1,740 | 400 | 2,490 | 1,180 | 1,310 | 9,660 | 4,670 | 5,000 |
| Arm | 1,420 | 920 | 500 | 1,100 | 450 | 650 | 4,760 | 2,380 | 2,370 |
| Wrist | 620 | 390 | 230 | 1,160 | 440 | 720 | 6,210 | 2,380 | 3,830 |
| Hand | 1,530 | 1,060 | 470 | 2,310 | 850 | 1,460 | 8,710 | 3,730 | 4,980 |
| Lower extremities | 4,470 | 3,410 | 1,060 | 4,930 | 2,750 | 2,170 | 19,540 | 11,380 | 8,170 |
| Knee | 1,950 | 1,650 | 300 | 1,580 | 870 | 700 | 9,230 | 5,400 | 3,830 |
| Ankle | 570 | 440 | 130 | 980 | 540 | 450 | 4,130 | 2,490 | 1,640 |
| Foot | 1,220 | 780 | 440 | 1,460 | 800 | 660 | 2,990 | 1,640 | 1,340 |
| Body systems | 500 | 470 | 30 | 120 | 90 | 20 | 870 | 840 | 30 |
| Multiple | 1,280 | 1,150 | 130 | 1,170 | 640 | 530 | 12,540 | 6,970 | 5,570 |
| All other parts of body | 50 | 50 | — | 150 | 80 | 80 | 970 | 480 | 480 |
| Source of injury or illness: | | | | | | | | | |
| Chemicals and chemical products | 260 | 260 | — | 130 | 110 | 20 | 730 | 580 | 150 |
| Containers | 8,150 | 6,260 | 1,890 | 7,780 | 3,640 | 4,140 | 4,560 | 2,360 | 2,200 |
| Furniture and fixtures | 410 | 380 | 30 | 1,300 | 500 | 800 | 4,750 | 2,280 | 2,480 |
| Machinery | 490 | 410 | 80 | 710 | 390 | 320 | 1,670 | 850 | 820 |
| Parts and materials | 870 | 550 | 320 | 1,410 | 640 | 770 | 1,500 | 910 | 600 |
| Person, injured or ill worker | 2,560 | 1,890 | 670 | 3,640 | 1,700 | 1,950 | 11,070 | 5,990 | 5,080 |
| Worker motion or position | 2,490 | 1,830 | 670 | 3,550 | 1,670 | 1,880 | 10,700 | 5,720 | 4,980 |
| Person, other than injured or ill worker | 250 | 220 | 30 | 30 | 20 | — | 53,180 | 25,720 | 27,460 |
| Floors, walkways, ground surfaces | 1,500 | 1,300 | 200 | 1,880 | 1,030 | 850 | 19,130 | 11,830 | 7,300 |
| Handtools | 140 | 110 | 30 | 600 | 160 | 440 | 1,700 | 790 | 900 |
| Ladder | 120 | 100 | — | 160 | 100 | 50 | 230 | 140 | 100 |
| Vehicles | 3,480 | 2,750 | 730 | 3,190 | 1,770 | 1,420 | 2,560 | 1,540 | 1,020 |
| Trucks | 280 | 250 | 30 | 420 | 310 | 110 | 30 | 20 | — |
| Cart, dolly, hand truck nonpowered | 1,330 | 940 | 390 | 270 | 110 | 170 | 1,110 | 490 | 620 |
| All other sources | 1,930 | 1,520 | 400 | 1,280 | 720 | 560 | 11,960 | 6,430 | 5,530 |

¹ Days-away-from-work cases include those that resulted in days away from work, some of which also included job transfer or restriction.

² Includes only cases involving days of job transfer or restriction.

³ Days of job transfer or restriction pilot study. In January of 2012, the BLS Survey of Occupational Injuries and Illnesses (SO II) began to collect information on case circumstances and worker characteristics for days-of-job-transfer-or-restriction (DJTR) cases. The pilot included six three-digit industries including: Specialty trade contractors; Food manufacturing; Building material and garden equipment supplies dealers; Air transportation; Warehousing and storage; and Nursing and residential care facilities.

⁴ Days away from work, restricted work activity, or job transfer (DART) totals are the sum of cases involving days away from work (DAFW), and cases with restricted work activity, or job transfer (DJTR).

⁵ Musculoskeletal disorders (MSDs) include cases where the nature of the injury or illness is pinched nerve; herniated disc; meniscus tear; sprains, strains, tears; hernia (traumatic and nontraumatic); pain, swelling, and numbness; carpal or tarsal tunnel syndrome; Raynaud's syndrome or phenomenon; musculoskeletal system and connective tissue diseases and disorders, when the event or exposure leading to the injury or illness is overexertion and bodily reaction, unspecified; overexertion involving out-of-body sources; repetitive motion involving microtasks; other and multiple exertions or bodily reactions; and rubbed, abraded, or jarred by vibration.

NOTE: Dash indicates data do not meet publication guidelines. Because of rounding and data exclusion of nonclassifiable responses, data may not sum to the totals.

SOURCE: Bureau of Labor Statistics, U.S. Department of Labor, Survey of Occupational Injuries and Illnesses in cooperation with participating State agencies.

TABLE 2. Number of nonfatal occupational injuries and illnesses involving days away from work, restricted work activity, or job transfer (DART), days away from work (DAFW)¹, and restricted work activity, or job transfer (DJTR)² by selected industry³ and worker characteristics, private industry, 2011

| Worker characteristics (Gender, Age, Race/Ethnicity, Length of service, Occupation) | Specialty trade contractors | | | Food manufacturing | | | Building material and garden equipment supplies dealers | | |
|--|-----------------------------|--------------------------------|--|--------------------|--------------------------------|--|---|--------------------------------|--|
| | Total ⁴ | Cases with days away from work | Cases with job transfer or restriction | Total ⁴ | Cases with days away from work | Cases with job transfer or restriction | Total ⁴ | Cases with days away from work | Cases with job transfer or restriction |
| Total | 66,630 | 48,540 | 18,090 | 50,830 | 20,950 | 29,880 | 35,090 | 17,290 | 17,800 |
| Gender: | | | | | | | | | |
| Male | 64,840 | 47,200 | 17,640 | 33,870 | 14,820 | 19,050 | 25,970 | 13,140 | 12,830 |
| Female | 1,760 | 1,300 | 450 | 16,900 | 6,130 | 10,770 | 9,120 | 4,150 | 4,970 |
| Not reported | 30 | 30 | - | 60 | - | 60 | - | - | - |
| Age:⁵ | | | | | | | | | |
| 16 - 19 | 990 | 740 | 250 | 1,000 | 390 | 610 | 1,230 | 680 | 540 |
| 20 - 24 | 5,500 | 3,980 | 1,520 | 5,160 | 2,130 | 3,030 | 4,950 | 2,130 | 2,830 |
| 25 - 34 | 20,070 | 14,080 | 5,990 | 11,700 | 4,310 | 7,380 | 7,790 | 3,600 | 4,190 |
| 35 - 44 | 17,010 | 12,110 | 4,900 | 11,850 | 4,590 | 7,260 | 7,030 | 3,430 | 3,600 |
| 45 - 54 | 14,630 | 11,390 | 3,250 | 12,340 | 5,300 | 7,030 | 7,930 | 3,980 | 3,950 |
| 55 - 64 | 6,120 | 4,470 | 1,650 | 6,640 | 3,250 | 3,390 | 4,940 | 2,650 | 2,290 |
| 65 and over | 610 | 420 | 190 | 720 | 420 | 300 | 1,180 | 800 | 380 |
| Not reported | 1,690 | 1,340 | 350 | 1,430 | 550 | 880 | 50 | 30 | 20 |
| Race or ethnic origin:⁶ | | | | | | | | | |
| White only | 36,570 | 27,480 | 9,090 | 16,000 | 7,490 | 8,520 | 7,340 | 4,600 | 2,740 |
| Hispanic or Latino only | 13,330 | 8,570 | 4,760 | 13,670 | 5,130 | 8,540 | 1,100 | 700 | 410 |
| Black only | 1,660 | 1,130 | 530 | 6,130 | 2,280 | 3,850 | 650 | 320 | 330 |
| Asian only | 270 | 190 | 80 | 1,210 | 450 | 760 | 50 | 40 | - |
| American Indian or Alaskan Native only | 220 | 120 | 100 | 170 | 50 | 120 | 50 | 40 | - |
| Native Hawaiian or Pacific Islander only | 140 | 110 | 40 | 190 | 70 | 120 | 30 | 30 | - |
| Multi-race | - | - | - | - | - | - | - | - | - |
| Hispanic or Latino and other race | - | - | - | 50 | - | 40 | - | - | - |

See footnotes at end of table.

TABLE 2. Number of nonfatal occupational injuries and illnesses involving days away from work, restricted work activity, or job transfer (DART), days away from work (DAFW)¹, and restricted work activity, or job transfer (DJTR)² by selected industry³ and worker characteristics, private industry, 2011 — Continued

| Worker characteristics (Gender, Age, Race/Ethnicity, Length of service, Occupation) | Air transportation | | | Warehousing and storage | | | Nursing and residential care facilities | | |
|--|--------------------|--------------------------------|--|-------------------------|--------------------------------|--|---|--------------------------------|--|
| | Total ⁴ | Cases with days away from work | Cases with job transfer or restriction | Total ⁴ | Cases with days away from work | Cases with job transfer or restriction | Total ⁴ | Cases with days away from work | Cases with job transfer or restriction |
| Total | 20,150 | 15,750 | 4,410 | 22,110 | 10,790 | 11,320 | 113,050 | 59,400 | 53,650 |
| Gender: | | | | | | | | | |
| Male | 11,790 | 8,870 | 2,920 | 16,280 | 8,190 | 8,090 | 15,800 | 9,000 | 6,790 |
| Female | 8,360 | 6,870 | 1,490 | 5,830 | 2,600 | 3,240 | 97,080 | 50,340 | 46,750 |
| Not reported | — | — | — | — | — | — | 170 | 60 | 110 |
| Age:⁵ | | | | | | | | | |
| 16 - 19 | 120 | 40 | 80 | 530 | 240 | 290 | 2,780 | 1,390 | 1,400 |
| 20 - 24 | 1,050 | 700 | 350 | 2,780 | 1,200 | 1,570 | 15,660 | 7,590 | 8,080 |
| 25 - 34 | 2,750 | 2,150 | 600 | 6,030 | 2,640 | 3,380 | 26,820 | 13,370 | 13,440 |
| 35 - 44 | 5,900 | 4,600 | 1,290 | 4,960 | 2,540 | 2,420 | 23,440 | 12,510 | 10,930 |
| 45 - 54 | 6,370 | 5,210 | 1,150 | 4,840 | 2,500 | 2,340 | 25,260 | 13,580 | 11,680 |
| 55 - 64 | 3,610 | 2,720 | 890 | 2,340 | 1,320 | 1,020 | 14,190 | 8,190 | 6,000 |
| 65 and over | 330 | 300 | 30 | 270 | 120 | 150 | 2,490 | 1,610 | 880 |
| Not reported | 20 | — | — | 380 | 230 | 150 | 2,390 | 1,150 | 1,230 |
| Race or ethnic origin:⁶ | | | | | | | | | |
| White only | 1,200 | 980 | 220 | 6,760 | 3,480 | 3,290 | 49,700 | 25,870 | 23,830 |
| Hispanic or Latino only | 350 | 190 | 160 | 2,720 | 1,370 | 1,350 | 8,670 | 4,320 | 4,360 |
| Black only | 360 | 300 | 60 | 1,920 | 910 | 1,020 | 21,910 | 11,890 | 10,020 |
| Asian only | 130 | 60 | 70 | 170 | 70 | 90 | 1,920 | 970 | 940 |
| American Indian or Alaskan Native only | — | — | — | 60 | 20 | 40 | 520 | 380 | 140 |
| Native Hawaiian or Pacific Islander only | 130 | 90 | 40 | 40 | — | 30 | 520 | 240 | 280 |
| Multi-race | — | — | — | — | — | — | 170 | 100 | 70 |
| Hispanic or Latino and other race | — | — | — | — | — | — | 90 | 40 | 50 |

See footnotes at end of table.

TABLE 2. Number of nonfatal occupational injuries and illnesses involving days away from work, restricted work activity, or job transfer (DART), days away from work (DAFW)¹, and restricted work activity, or job transfer (DJTR)² by selected industry³ and worker characteristics, private industry, 2011 — Continued

| Worker characteristics (Gender, Age, Race/Ethnicity, Length of service, Occupation) | Specialty trade contractors | | | Food manufacturing | | | Building material and garden equipment supplies dealers | | |
|--|-----------------------------|--------------------------------|--|--------------------|--------------------------------|--|---|--------------------------------|--|
| | Total ⁴ | Cases with days away from work | Cases with job transfer or restriction | Total ⁴ | Cases with days away from work | Cases with job transfer or restriction | Total ⁴ | Cases with days away from work | Cases with job transfer or restriction |
| Race or ethnic origin:⁶ | | | | | | | | | |
| Not reported | 14,410 | 10,920 | 3,490 | 13,390 | 5,470 | 7,920 | 25,860 | 11,560 | 14,310 |
| Length of service with employer: | | | | | | | | | |
| Less than 3 months | 9,300 | 6,820 | 2,470 | 5,730 | 2,480 | 3,250 | 3,470 | 1,960 | 1,510 |
| 3 - 11 months | 12,610 | 9,230 | 3,380 | 9,330 | 3,840 | 5,490 | 5,490 | 2,900 | 2,590 |
| 1 - 5 years | 23,870 | 17,370 | 6,500 | 17,760 | 7,040 | 10,720 | 13,830 | 6,290 | 7,550 |
| More than 5 years | 19,810 | 14,410 | 5,390 | 17,190 | 7,220 | 9,980 | 12,230 | 6,110 | 6,120 |
| Not reported | 1,040 | 690 | 340 | 820 | 370 | 450 | 70 | 40 | 30 |
| Summary occupational groups⁷ | | | | | | | | | |
| Management occupations | 780 | 610 | 170 | 300 | 150 | 150 | 410 | 160 | 250 |
| Professional and related occupations | 190 | 80 | 110 | 300 | 100 | 200 | 170 | 100 | 80 |
| Service occupations | 580 | 530 | 40 | 2,630 | 1,240 | 1,390 | 960 | 740 | 220 |
| Sales and related occupations | 90 | 50 | 30 | 270 | 200 | 70 | 17,380 | 7,810 | 9,570 |
| Office and administrative support occupations | 390 | 210 | 180 | 1,400 | 620 | 790 | 4,440 | 2,020 | 2,420 |
| Farming, fishing, and forestry occupations | — | — | — | 320 | 120 | 200 | 260 | 140 | 120 |
| Construction and extraction occupations | 49,110 | 35,430 | 13,690 | 130 | 60 | 80 | 560 | 320 | 240 |
| Installation, maintenance, and repair occupations | 10,420 | 7,890 | 2,530 | 3,700 | 1,590 | 2,110 | 950 | 540 | 400 |
| Production occupations | 2,430 | 1,770 | 650 | 29,470 | 11,710 | 17,760 | 710 | 380 | 320 |
| Transportation and material moving occupations | 2,620 | 1,950 | 670 | 12,210 | 5,150 | 7,060 | 9,240 | 5,080 | 4,170 |

See footnotes at end of table.

TABLE 2. Number of nonfatal occupational injuries and illnesses involving days away from work, restricted work activity, or job transfer (DART), days away from work (DAFW)¹, and restricted work activity, or job transfer (DJTR)² by selected industry³ and worker characteristics, private industry, 2011 — Continued

| Worker characteristics (Gender, Age, Race/Ethnicity, Length of service, Occupation) | Air transportation | | | Warehousing and storage | | | Nursing and residential care facilities | | |
|--|--------------------|--------------------------------|--|-------------------------|--------------------------------|--|---|--------------------------------|--|
| | Total ⁴ | Cases with days away from work | Cases with job transfer or restriction | Total ⁴ | Cases with days away from work | Cases with job transfer or restriction | Total ⁴ | Cases with days away from work | Cases with job transfer or restriction |
| Race or ethnic origin:⁶ | | | | | | | | | |
| Not reported | 17,960 | 14,110 | 3,850 | 10,440 | 4,930 | 5,500 | 29,540 | 15,590 | 13,950 |
| Length of service with employer: | | | | | | | | | |
| Less than 3 months | 330 | 250 | 80 | 2,690 | 1,360 | 1,340 | 11,270 | 5,840 | 5,420 |
| 3 - 11 months | 1,130 | 880 | 250 | 4,290 | 1,990 | 2,290 | 27,960 | 14,400 | 13,560 |
| 1 - 5 years | 4,430 | 3,070 | 1,360 | 6,970 | 3,500 | 3,470 | 44,460 | 23,080 | 21,390 |
| More than 5 years | 14,190 | 11,510 | 2,680 | 7,650 | 3,670 | 3,980 | 26,940 | 15,040 | 11,910 |
| Not reported | 70 | 30 | 40 | 520 | 270 | 250 | 2,410 | 1,050 | 1,370 |
| Summary occupational groups⁷ | | | | | | | | | |
| Management occupations | 60 | 30 | 30 | 150 | 80 | 70 | 2,860 | 1,530 | 1,330 |
| Professional and related occupations | — | — | — | 60 | 50 | — | 17,880 | 10,280 | 7,600 |
| Service occupations | 190 | 140 | 60 | 360 | 180 | 180 | 87,580 | 45,020 | 42,560 |
| Sales and related occupations | 230 | 220 | — | 190 | 50 | 140 | 20 | — | 20 |
| Office and administrative support occupations | 11,030 | 7,550 | 3,480 | 5,970 | 2,780 | 3,190 | 970 | 560 | 410 |
| Farming, fishing, and forestry occupations | — | — | — | — | — | — | 30 | 30 | — |
| Construction and extraction occupations | — | — | — | — | — | — | 60 | 20 | 40 |
| Installation, maintenance, and repair occupations | 1,720 | 1,350 | 360 | 650 | 360 | 290 | 2,080 | 1,120 | 960 |
| Production occupations | 160 | 150 | — | 890 | 430 | 460 | 1,090 | 550 | 550 |
| Transportation and material moving occupations | 6,720 | 6,260 | 450 | 13,770 | 6,820 | 6,950 | 400 | 240 | 170 |

¹ Days-away-from-work cases include those that resulted in days away from work, some of which also included job transfer or restriction.

² Includes only cases involving days of job transfer or restriction.

³ Days of job transfer or restriction pilot study. In January of 2012, the BLS Survey of Occupational Injuries and Illnesses (SO II) began to collect information on case circumstances and worker characteristics for days-of-job-transfer-or-restriction (DJTR) cases. The pilot included six three-digit industries including: Specialty trade contractors; Food manufacturing; Building material and garden equipment supplies dealers; Air transportation; Warehousing and storage; and Nursing and residential care facilities.

⁴ Days away from work, restricted work activity, or job transfer (DART) totals are the sum of cases involving days away from work (DAFW), and cases with restricted work activity, or job transfer (DJTR).

⁵ Information is not shown separately for injured workers under age 14; they accounted for fewer than 50 cases.

⁶ Race and ethnicity data do not add to total. Some cases may be counted as both Multi-race and Hispanic and other race.

⁷ *Standard Occupational Classification Manual, 2010*, Office of Management and Budget

NOTE: Dash indicates data do not meet publication guidelines. Because of rounding and data exclusion of nonclassifiable responses, data may not sum to the totals.

SOURCE: Bureau of Labor Statistics, U.S. Department of Labor, Survey of Occupational Injuries and Illnesses in cooperation with participating State agencies.

TABLE 3. Number of nonfatal occupational injuries and illnesses involving cases involving days away from work, restricted work activity, or job transfer (DART), days away from work (DAFW)¹, and restricted work activity, or job transfer (DJTR)² by selected industry³ and temporal characteristics, private industry, 2011

| Temporal characteristics (DART, DAFW, and DJTR involving, Day, Hours before event, Time of day) | Specialty trade contractors | | | Food manufacturing | | | Building material and garden equipment supplies dealers | | |
|--|-----------------------------|--------------------------------|--|--------------------|--------------------------------|--|---|--------------------------------|--|
| | Total ⁴ | Cases with days away from work | Cases with job transfer or restriction | Total ⁴ | Cases with days away from work | Cases with job transfer or restriction | Total ⁴ | Cases with days away from work | Cases with job transfer or restriction |
| Total | 66,630 | 48,540 | 18,090 | 50,830 | 20,950 | 29,880 | 35,090 | 17,290 | 17,800 |
| DART, DAFW, and DJTR -involving: | | | | | | | | | |
| 1 day | 5,820 | 6,100 | 790 | 2,590 | 3,100 | 830 | 2,110 | 2,260 | 660 |
| 2 days | 4,430 | 4,460 | 1,210 | 2,500 | 2,420 | 1,000 | 1,950 | 2,080 | 620 |
| 3 - 5 days | 9,550 | 7,350 | 3,300 | 5,710 | 3,730 | 3,280 | 4,480 | 3,430 | 2,100 |
| 6 - 10 days | 8,570 | 4,430 | 4,200 | 8,760 | 2,350 | 6,580 | 5,810 | 1,980 | 4,120 |
| 11 - 20 days | 9,990 | 6,030 | 3,200 | 8,090 | 2,580 | 5,680 | 5,260 | 2,090 | 3,320 |
| 21 - 30 days | 5,400 | 3,620 | 1,770 | 4,920 | 1,320 | 3,320 | 3,490 | 1,270 | 2,050 |
| 31 days or more | 22,860 | 16,550 | 3,630 | 18,270 | 5,450 | 9,180 | 11,990 | 4,180 | 4,930 |
| Day of week: | | | | | | | | | |
| Sunday | 1,370 | 980 | 390 | 2,240 | 1,090 | 1,160 | 2,470 | 990 | 1,480 |
| Monday | 14,890 | 10,960 | 3,920 | 9,320 | 3,770 | 5,550 | 6,610 | 3,340 | 3,280 |
| Tuesday | 12,070 | 8,770 | 3,310 | 9,570 | 3,790 | 5,790 | 6,080 | 2,730 | 3,350 |
| Wednesday | 12,300 | 9,010 | 3,300 | 9,210 | 3,900 | 5,320 | 5,860 | 2,840 | 3,020 |
| Thursday | 11,780 | 8,160 | 3,610 | 9,200 | 3,750 | 5,450 | 5,480 | 2,930 | 2,550 |
| Friday | 11,670 | 8,630 | 3,040 | 8,000 | 3,130 | 4,860 | 5,230 | 2,680 | 2,550 |
| Saturday | 2,540 | 2,030 | 520 | 3,290 | 1,530 | 1,760 | 3,360 | 1,790 | 1,570 |
| Hours on the job before event occurred: | | | | | | | | | |
| Before shift began | 450 | 430 | 20 | 270 | 120 | 150 | 260 | 110 | 150 |
| Less than 1 hour | 3,380 | 2,060 | 1,320 | 4,270 | 1,750 | 2,520 | 3,230 | 1,510 | 1,720 |
| 1 hour to less than 2 hours | 5,870 | 4,150 | 1,720 | 4,470 | 1,700 | 2,770 | 4,310 | 2,060 | 2,250 |
| 2 hours to less than 4 hours | 14,110 | 10,260 | 3,850 | 9,530 | 3,900 | 5,620 | 8,640 | 4,290 | 4,360 |
| 4 hours to less than 6 hours | 9,370 | 6,840 | 2,530 | 7,700 | 3,270 | 4,430 | 6,160 | 2,900 | 3,260 |
| 6 hours to less than 8 hours | 10,160 | 7,190 | 2,980 | 7,000 | 3,200 | 3,810 | 5,570 | 2,820 | 2,740 |
| 8 hours to less than 10 hours | 4,930 | 3,540 | 1,390 | 4,220 | 1,640 | 2,580 | 2,870 | 1,430 | 1,440 |
| 10 hours to less than 12 hours | 1,020 | 700 | 320 | 1,320 | 610 | 700 | 390 | 190 | 200 |
| 12 hours to less than 16 hours | 130 | 80 | 50 | 390 | 240 | 150 | 120 | 70 | 50 |
| More than 16 hours | 30 | 30 | - | 20 | - | - | - | - | - |
| Not reported | 17,180 | 13,270 | 3,910 | 11,640 | 4,510 | 7,140 | 3,530 | 1,900 | 1,630 |

See footnotes at end of table.

TABLE 3. Number of nonfatal occupational injuries and illnesses involving cases involving days away from work, restricted work activity, or job transfer (DART), days away from work (DAFW)¹, and restricted work activity, or job transfer (DJTR)² by selected industry³ and temporal characteristics, private industry, 2011 — Continued

| Temporal characteristics (DART, DAFW, and DJTR involving, Day, Hours before event, Time of day) | Air transportation | | | Warehousing and storage | | | Nursing and residential care facilities | | |
|--|--------------------|--------------------------------|--|-------------------------|--------------------------------|--|---|--------------------------------|--|
| | Total ⁴ | Cases with days away from work | Cases with job transfer or restriction | Total ⁴ | Cases with days away from work | Cases with job transfer or restriction | Total ⁴ | Cases with days away from work | Cases with job transfer or restriction |
| Total | 20,150 | 15,750 | 4,410 | 22,110 | 10,790 | 11,320 | 113,050 | 59,400 | 53,650 |
| DART, DAFW, and DJTR -involving: | | | | | | | | | |
| 1 day | 600 | 640 | 150 | 1,330 | 1,420 | 400 | 7,780 | 9,270 | 1,800 |
| 2 days | 740 | 700 | 200 | 1,110 | 1,060 | 400 | 7,970 | 8,540 | 2,310 |
| 3 - 5 days | 2,910 | 2,570 | 800 | 2,680 | 1,440 | 1,670 | 18,180 | 12,860 | 8,450 |
| 6 - 10 days | 2,660 | 2,250 | 920 | 3,510 | 1,160 | 2,510 | 20,750 | 7,940 | 12,540 |
| 11 - 20 days | 3,270 | 2,340 | 830 | 3,240 | 1,200 | 2,140 | 19,260 | 6,400 | 11,270 |
| 21 - 30 days | 1,620 | 950 | 490 | 1,900 | 770 | 1,210 | 9,400 | 2,720 | 5,520 |
| 31 days or more | 8,350 | 6,290 | 1,010 | 8,330 | 3,740 | 3,010 | 29,700 | 11,670 | 11,760 |
| Day of week: | | | | | | | | | |
| Sunday | 2,450 | 1,860 | 600 | 1,560 | 760 | 810 | 12,420 | 7,030 | 5,390 |
| Monday | 3,140 | 2,510 | 630 | 4,470 | 2,230 | 2,250 | 18,550 | 9,660 | 8,890 |
| Tuesday | 2,460 | 1,930 | 530 | 3,820 | 1,840 | 1,990 | 18,330 | 9,130 | 9,200 |
| Wednesday | 3,440 | 2,660 | 780 | 3,920 | 1,870 | 2,060 | 18,190 | 9,480 | 8,710 |
| Thursday | 3,530 | 2,970 | 560 | 3,590 | 1,860 | 1,730 | 16,780 | 8,450 | 8,330 |
| Friday | 2,670 | 1,820 | 850 | 3,380 | 1,590 | 1,790 | 15,850 | 8,530 | 7,320 |
| Saturday | 2,470 | 2,000 | 470 | 1,360 | 660 | 710 | 12,940 | 7,120 | 5,820 |
| Hours on the job before event occurred: | | | | | | | | | |
| Before shift began | 280 | 190 | 90 | 50 | 20 | 20 | 940 | 570 | 370 |
| Less than 1 hour | 2,270 | 1,790 | 480 | 1,820 | 740 | 1,080 | 10,490 | 6,010 | 4,490 |
| 1 hour to less than 2 hours | 2,920 | 2,340 | 580 | 2,640 | 1,240 | 1,410 | 12,180 | 6,580 | 5,600 |
| 2 hours to less than 4 hours | 4,790 | 3,710 | 1,080 | 4,960 | 2,430 | 2,520 | 23,900 | 12,130 | 11,770 |
| 4 hours to less than 6 hours | 3,930 | 2,980 | 950 | 3,860 | 1,840 | 2,010 | 21,570 | 10,780 | 10,790 |
| 6 hours to less than 8 hours | 2,470 | 1,880 | 580 | 3,250 | 1,640 | 1,610 | 18,430 | 9,930 | 8,500 |
| 8 hours to less than 10 hours | 880 | 720 | 160 | 1,680 | 840 | 830 | 4,970 | 2,810 | 2,160 |
| 10 hours to less than 12 hours | 550 | 390 | 160 | 520 | 310 | 220 | 1,540 | 840 | 700 |
| 12 hours to less than 16 hours | 400 | 330 | 80 | 160 | 60 | 100 | 810 | 410 | 400 |
| More than 16 hours | 60 | 50 | — | — | — | — | 120 | 90 | 30 |
| Not reported | 1,600 | 1,360 | 250 | 3,160 | 1,650 | 1,510 | 18,090 | 9,250 | 8,850 |

See footnotes at end of table.

TABLE 3. Number of nonfatal occupational injuries and illnesses involving cases involving days away from work, restricted work activity, or job transfer (DART), days away from work (DAFW)¹, and restricted work activity, or job transfer (DJTR)² by selected industry³ and temporal characteristics, private industry, 2011 — Continued

| Temporal characteristics (DART, DAFW, and DJTR involving, Day, Hours before event, Time of day) | Specialty trade contractors | | | Food manufacturing | | | Building material and garden equipment supplies dealers | | |
|--|-----------------------------|--------------------------------|--|--------------------|--------------------------------|--|---|--------------------------------|--|
| | Total ⁴ | Cases with days away from work | Cases with job transfer or restriction | Total ⁴ | Cases with days away from work | Cases with job transfer or restriction | Total ⁴ | Cases with days away from work | Cases with job transfer or restriction |
| Time of event: | | | | | | | | | |
| 12:01 A.M. to 4:00 A.M. | 280 | 200 | 80 | 4,020 | 1,730 | 2,290 | 650 | 330 | 320 |
| 4:01 A.M. to 8:00 A.M. | 4,980 | 3,020 | 1,960 | 6,710 | 2,640 | 4,070 | 3,960 | 1,800 | 2,160 |
| 8:01 A.M. to 12:00 noon | 24,850 | 17,980 | 6,870 | 10,060 | 4,220 | 5,840 | 11,550 | 5,520 | 6,020 |
| 12:01 P.M. to 4:00 P.M. | 16,880 | 12,360 | 4,520 | 8,960 | 3,930 | 5,030 | 8,990 | 4,600 | 4,390 |
| 4:01 P.M. to 8:00 P.M. | 2,560 | 1,860 | 700 | 5,610 | 2,230 | 3,380 | 4,430 | 2,100 | 2,330 |
| 8:01 P.M. to 12:00 midnight | 670 | 540 | 130 | 4,750 | 1,950 | 2,790 | 2,400 | 1,170 | 1,240 |
| Not reported | 16,400 | 12,580 | 3,820 | 10,730 | 4,240 | 6,490 | 3,100 | 1,780 | 1,330 |

See footnotes at end of table.

TABLE 3. Number of nonfatal occupational injuries and illnesses involving cases involving days away from work, restricted work activity, or job transfer (DART), days away from work (DAFW)¹, and restricted work activity, or job transfer (DJTR)² by selected industry³ and temporal characteristics, private industry, 2011 — Continued

| Temporal characteristics (DART, DAFW, and DJTR involving, Day, Hours before event, Time of day) | Air transportation | | | Warehousing and storage | | | Nursing and residential care facilities | | |
|--|--------------------|--------------------------------|--|-------------------------|--------------------------------|--|---|--------------------------------|--|
| | Total ⁴ | Cases with days away from work | Cases with job transfer or restriction | Total ⁴ | Cases with days away from work | Cases with job transfer or restriction | Total ⁴ | Cases with days away from work | Cases with job transfer or restriction |
| Time of event: | | | | | | | | | |
| 12:01 A.M. to 4:00 A.M. | 740 | 540 | 200 | 1,430 | 640 | 790 | 4,450 | 2,440 | 2,020 |
| 4:01 A.M. to 8:00 A.M. | 2,560 | 1,950 | 610 | 2,660 | 1,270 | 1,390 | 15,900 | 8,320 | 7,580 |
| 8:01 A.M. to 12:00 noon | 4,610 | 3,600 | 1,010 | 5,590 | 2,770 | 2,820 | 27,540 | 13,360 | 14,180 |
| 12:01 P.M. to 4:00 P.M. | 4,250 | 3,400 | 850 | 4,140 | 2,050 | 2,090 | 21,670 | 11,780 | 9,890 |
| 4:01 P.M. to 8:00 P.M. | 4,230 | 3,370 | 860 | 3,060 | 1,420 | 1,640 | 17,870 | 9,710 | 8,170 |
| 8:01 P.M. to 12:00 midnight | 2,580 | 1,920 | 650 | 2,360 | 1,130 | 1,220 | 9,230 | 5,330 | 3,900 |
| Not reported | 1,190 | 970 | 220 | 2,870 | 1,500 | 1,370 | 16,390 | 8,470 | 7,910 |

¹ Days-away-from-work cases include those that resulted in days away from work, some of which also included job transfer or restriction.

² Includes only cases involving days of job transfer or restriction.

³ Days of job transfer or restriction pilot study. In January of 2012, the BLS Survey of Occupational Injuries and Illnesses (SO II) began to collect information on case circumstances and worker characteristics for days-of-job-transfer-or-restriction (DJTR) cases. The pilot included six three-digit industries including: Specialty trade contractors; Food manufacturing; Building material and garden equipment supplies dealers; Air transportation; Warehousing and storage; and Nursing and residential care facilities.

⁴ Days away from work, restricted work activity, or job transfer (DART) totals are the sum of cases involving days away from work (DAFW), and cases with restricted work activity, or job transfer (DJTR).

NOTE: Dash indicates data do not meet publication guidelines. Because of rounding and data exclusion of nonclassifiable responses, data may not sum to the totals.

SOURCE: Bureau of Labor Statistics, U.S. Department of Labor, Survey of Occupational Injuries and Illnesses in cooperation with participating State agencies.

TABLE 4. Number, incidence rates¹, and median days² of nonfatal occupational injuries and illnesses involving days of job transfer or restriction³ by selected industry⁴ and case characteristics of injury or illness, private industry, 2011

| Case characteristics (MSD, Nature, Event, Part, Source) | Specialty trade contractors | | | Food manufacturing | | | Building material and garden equipment supplies dealers | | |
|--|-----------------------------|----------------|--|--------------------|----------------|--|---|----------------|--|
| | Number | Incidence rate | Median days of job transfer or restriction | Number | Incidence rate | Median days of job transfer or restriction | Number | Incidence rate | Median days of job transfer or restriction |
| Total | 18,090 | 60.5 | 10 | 29,880 | 207.7 | 15 | 17,800 | 176.2 | 14 |
| Musculoskeletal disorders⁵ | 6,200 | 20.7 | 12 | 14,010 | 97.4 | 21 | 9,110 | 90.2 | 17 |
| Nature of injury or illness: | | | | | | | | | |
| Fractures | 1,270 | 4.3 | 31 | 1,300 | 9.0 | 36 | 650 | 6.5 | 36 |
| Sprains, strains, tears | 7,200 | 24.1 | 12 | 10,930 | 75.9 | 16 | 10,840 | 107.3 | 17 |
| Amputations | 80 | .3 | 19 | 100 | .7 | 41 | — | — | — |
| Cuts, lacerations, punctures | 4,040 | 13.5 | 7 | 3,710 | 25.8 | 10 | 2,010 | 19.9 | 7 |
| Cuts, lacerations | 3,600 | 12.0 | 7 | 3,570 | 24.8 | 10 | 1,770 | 17.5 | 8 |
| Punctures (except gunshot wounds) | 440 | 1.5 | 5 | 140 | 1.0 | 7 | 240 | 2.4 | 5 |
| Bruises, contusions | 1,460 | 4.9 | 10 | 3,080 | 21.4 | 10 | 2,470 | 24.5 | 12 |
| Chemical burns and corrosions | 50 | .2 | 13 | 130 | .9 | 10 | — | — | — |
| Heat (thermal) burns | 50 | .2 | 8 | 330 | 2.3 | 9 | — | — | — |
| Multiple traumatic injuries | 370 | 1.2 | 10 | 670 | 4.7 | 13 | 120 | 1.2 | 7 |
| With sprains and other injuries | 150 | .5 | 9 | 390 | 2.7 | 13 | 30 | .3 | 6 |
| With fractures and other injuries | 80 | .3 | 30 | 100 | .7 | 28 | — | — | — |
| Soreness, pain | 1,780 | 6.0 | 12 | 4,670 | 32.5 | 19 | 720 | 7.1 | 15 |
| Carpal tunnel syndrome | — | — | — | 470 | 3.3 | 48 | — | — | — |
| Tendonitis | 170 | .6 | 5 | 770 | 5.3 | 40 | — | — | — |
| All other natures | 1,620 | 5.4 | 7 | 3,730 | 25.9 | 15 | 960 | 9.5 | 14 |
| Event or exposure leading to injury or illness: | | | | | | | | | |
| Violence and other injuries by persons or animal | 70 | .2 | 6 | 220 | 1.5 | 10 | 120 | 1.1 | 8 |
| Intentional injury by other person | — | — | — | 20 | .1 | 15 | 20 | .2 | 20 |
| Injury by person unintentional or intent unknown | — | — | — | 90 | .6 | 13 | 40 | .4 | 41 |
| Animal and insect related incidents | 60 | .2 | 6 | 110 | .7 | 7 | 60 | .6 | 3 |
| Transportation incidents | 280 | .9 | 12 | 410 | 2.9 | 14 | 150 | 1.5 | 10 |
| Roadway incidents involving motorized land vehicles | 200 | .7 | 13 | 50 | .4 | 14 | 20 | .2 | 8 |
| Fires and explosions | 20 | .1 | 14 | — | — | — | — | — | — |
| Falls, slips, trips | 3,390 | 11.3 | 14 | 4,970 | 34.6 | 15 | 2,560 | 25.4 | 16 |
| Slips, trips without fall | 680 | 2.3 | 13 | 830 | 5.8 | 17 | 590 | 5.9 | 21 |
| Fall on same level | 1,260 | 4.2 | 15 | 3,280 | 22.8 | 16 | 1,380 | 13.6 | 18 |
| Fall to lower level | 1,220 | 4.1 | 18 | 680 | 4.7 | 14 | 540 | 5.4 | 9 |
| Exposure to harmful substances or environments | 180 | .6 | 6 | 670 | 4.7 | 9 | 50 | .5 | 7 |
| Contact with object, equipment | 7,670 | 25.7 | 7 | 8,880 | 61.7 | 11 | 5,620 | 55.6 | 10 |
| Struck by object or equipment | 4,510 | 15.1 | 8 | 4,160 | 28.9 | 10 | 3,740 | 37.1 | 10 |
| Struck against object or equipment | 1,900 | 6.4 | 6 | 2,240 | 15.6 | 10 | 1,030 | 10.2 | 9 |
| Caught in or compressed by object or equipment | 990 | 3.3 | 10 | 2,120 | 14.8 | 13 | 700 | 6.9 | 8 |
| Overexertion and bodily reaction | 6,440 | 21.5 | 12 | 14,390 | 100.0 | 21 | 9,230 | 91.4 | 17 |
| Overexertion in lifting or lowering | 2,010 | 6.7 | 11 | 3,160 | 21.9 | 14 | 4,520 | 44.8 | 18 |
| Repetitive motion involving microtasks | 460 | 1.5 | 30 | 5,420 | 37.6 | 31 | 180 | 1.8 | 33 |
| All other events or exposures | 50 | .2 | 6 | 340 | 2.3 | 10 | 80 | .8 | 20 |

See footnotes at end of table.

TABLE 4. Number, incidence rates¹, and median days² of nonfatal occupational injuries and illnesses involving days of job transfer or restriction³ by selected industry⁴ and case characteristics of injury or illness, private industry, 2011 — Continued

| Case characteristics (MSD, Nature, Event, Part, Source) | Air transportation | | | Warehousing and storage | | | Nursing and residential care facilities | | |
|--|--------------------|----------------|--|-------------------------|----------------|--|---|----------------|--|
| | Number | Incidence rate | Median days of job transfer or restriction | Number | Incidence rate | Median days of job transfer or restriction | Number | Incidence rate | Median days of job transfer or restriction |
| Total | 4,410 | 120.0 | 12 | 11,320 | 193.5 | 13 | 53,650 | 222.2 | 12 |
| Musculoskeletal disorders⁵ | 2,600 | 70.8 | 15 | 6,330 | 108.2 | 14 | 28,140 | 116.5 | 14 |
| Nature of injury or illness: | | | | | | | | | |
| Fractures | 40 | 1.2 | 34 | 230 | 3.8 | 36 | 720 | 3.0 | 30 |
| Sprains, strains, tears | 2,820 | 76.7 | 13 | 5,900 | 100.9 | 14 | 31,470 | 130.3 | 13 |
| Amputations | — | — | — | — | — | — | 20 | .1 | 5 |
| Cuts, lacerations, punctures | 180 | 5.0 | 7 | 900 | 15.3 | 9 | 1,700 | 7.0 | 7 |
| Cuts, lacerations | 160 | 4.4 | 5 | 790 | 13.5 | 9 | 1,420 | 5.9 | 8 |
| Punctures (except gunshot wounds) | 20 | .6 | 7 | 110 | 1.8 | 7 | 290 | 1.2 | 5 |
| Bruises, contusions | 570 | 15.5 | 7 | 1,280 | 21.8 | 10 | 5,280 | 21.9 | 7 |
| Chemical burns and corrosions | — | — | — | — | — | — | 50 | .2 | 5 |
| Heat (thermal) burns | — | — | — | — | — | — | 390 | 1.6 | 6 |
| Multiple traumatic injuries | 40 | 1.2 | 44 | 190 | 3.2 | 7 | 1,820 | 7.5 | 8 |
| With sprains and other injuries | 30 | .8 | 71 | 100 | 1.7 | 7 | 1,460 | 6.0 | 8 |
| With fractures and other injuries | — | — | — | — | — | — | 60 | .3 | 24 |
| Soreness, pain | 270 | 7.3 | 22 | 1,780 | 30.4 | 18 | 8,020 | 33.2 | 12 |
| Carpal tunnel syndrome | — | — | — | 20 | .4 | 33 | 30 | .1 | 4 |
| Tendonitis | — | — | — | 90 | 1.5 | 8 | 180 | .7 | 35 |
| All other natures | 480 | 12.9 | 7 | 920 | 15.8 | 14 | 3,980 | 16.5 | 12 |
| Event or exposure leading to injury or illness: | | | | | | | | | |
| Violence and other injuries by persons or animal | 30 | .8 | 9 | 20 | .3 | 4 | 7,010 | 29.0 | 10 |
| Intentional injury by other person | — | — | — | — | — | — | 3,550 | 14.7 | 8 |
| Injury by person unintentional or intent unknown | — | — | — | — | — | — | 3,280 | 13.6 | 12 |
| Animal and insect related incidents | — | — | — | — | — | — | 60 | .2 | 6 |
| Transportation incidents | 50 | 1.2 | 48 | 520 | 8.8 | 14 | 280 | 1.2 | 15 |
| Roadway incidents involving motorized land vehicles | — | — | — | 60 | 1.0 | 14 | 170 | .7 | 7 |
| Fires and explosions | — | — | — | — | — | — | — | — | — |
| Falls, slips, trips | 500 | 13.6 | 8 | 1,350 | 23.0 | 15 | 9,760 | 40.4 | 12 |
| Slips, trips without fall | 250 | 6.7 | 8 | 250 | 4.3 | 19 | 1,480 | 6.1 | 10 |
| Fall on same level | 190 | 5.2 | 8 | 820 | 14.0 | 14 | 7,480 | 31.0 | 12 |
| Fall to lower level | 40 | 1.2 | 3 | 230 | 3.9 | 15 | 410 | 1.7 | 16 |
| Exposure to harmful substances or environments | 40 | 1.1 | 29 | 50 | .9 | 8 | 650 | 2.7 | 7 |
| Contact with object, equipment | 1,110 | 30.3 | 7 | 2,820 | 48.1 | 10 | 6,190 | 25.6 | 8 |
| Struck by object or equipment | 580 | 15.7 | 7 | 1,640 | 28.0 | 11 | 3,360 | 13.9 | 8 |
| Struck against object or equipment | 380 | 10.4 | 5 | 650 | 11.2 | 9 | 1,720 | 7.1 | 8 |
| Caught in or compressed by object or equipment | 140 | 3.7 | 6 | 390 | 6.6 | 10 | 910 | 3.8 | 10 |
| Overexertion and bodily reaction | 2,680 | 73.0 | 15 | 6,490 | 110.9 | 14 | 29,240 | 121.1 | 14 |
| Overexertion in lifting or lowering | 1,440 | 39.1 | 20 | 2,840 | 48.5 | 14 | 8,910 | 36.9 | 13 |
| Repetitive motion involving microtasks | 120 | 3.3 | 4 | 550 | 9.4 | 22 | 390 | 1.6 | 21 |
| All other events or exposures | — | — | — | 80 | 1.4 | 23 | 510 | 2.1 | 10 |

See footnotes at end of table.

TABLE 4. Number, incidence rates¹, and median days² of nonfatal occupational injuries and illnesses involving days of job transfer or restriction³ by selected industry⁴ and case characteristics of injury or illness, private industry, 2011 — Continued

| Case characteristics (MSD, Nature, Event, Part, Source) | Specialty trade contractors | | | Food manufacturing | | | Building material and garden equipment supplies dealers | | |
|--|-----------------------------|----------------|--|--------------------|----------------|--|---|----------------|--|
| | Number | Incidence rate | Median days of job transfer or restriction | Number | Incidence rate | Median days of job transfer or restriction | Number | Incidence rate | Median days of job transfer or restriction |
| Part of body affected by the injury or illness: | | | | | | | | | |
| Head | 660 | 2.2 | 3 | 870 | 6.1 | 6 | 470 | 4.6 | 5 |
| Eye(s) | 270 | .9 | 3 | 250 | 1.7 | 3 | 70 | .7 | 3 |
| Neck | 170 | .6 | 7 | 190 | 1.3 | 13 | 330 | 3.3 | 21 |
| Trunk | 4,210 | 14.1 | 11 | 5,800 | 40.3 | 14 | 5,570 | 55.1 | 15 |
| Back | 3,450 | 11.5 | 10 | 4,560 | 31.7 | 14 | 4,620 | 45.7 | 15 |
| Upper extremities | 8,640 | 28.9 | 10 | 17,290 | 120.2 | 16 | 7,330 | 72.6 | 13 |
| Shoulder | 1,290 | 4.3 | 15 | 2,720 | 18.9 | 25 | 2,070 | 20.5 | 21 |
| Arm | 1,230 | 4.1 | 12 | 2,120 | 14.8 | 16 | 1,400 | 13.9 | 18 |
| Wrist | 920 | 3.1 | 11 | 2,820 | 19.6 | 22 | 890 | 8.9 | 20 |
| Hand | 4,970 | 16.6 | 8 | 7,920 | 55.1 | 13 | 2,820 | 27.9 | 9 |
| Lower extremities | 3,480 | 11.6 | 11 | 3,520 | 24.4 | 12 | 3,680 | 36.4 | 13 |
| Knee | 1,430 | 4.8 | 13 | 1,210 | 8.4 | 11 | 1,120 | 11.1 | 17 |
| Ankle | 730 | 2.4 | 10 | 800 | 5.5 | 12 | 800 | 7.9 | 10 |
| Foot | 770 | 2.6 | 7 | 890 | 6.2 | 11 | 1,200 | 11.8 | 12 |
| Body systems | 30 | .1 | 5 | 40 | .3 | 5 | 40 | .3 | 2 |
| Multiple | 850 | 2.8 | 15 | 1,980 | 13.7 | 21 | 370 | 3.6 | 20 |
| All other parts of body | 60 | .2 | 6 | 200 | 1.4 | 4 | 20 | .2 | 26 |
| Source of injury or illness: | | | | | | | | | |
| Chemicals and chemical products | 80 | .3 | 13 | 210 | 1.5 | 6 | 20 | .2 | 16 |
| Containers | 1,010 | 3.4 | 10 | 5,290 | 36.7 | 13 | 4,060 | 40.2 | 18 |
| Furniture and fixtures | 310 | 1.0 | 11 | 730 | 5.1 | 14 | 1,280 | 12.7 | 17 |
| Machinery | 1,080 | 3.6 | 12 | 3,080 | 21.4 | 13 | 1,710 | 16.9 | 17 |
| Parts and materials | 5,680 | 19.0 | 8 | 2,030 | 14.1 | 13 | 3,060 | 30.3 | 10 |
| Person, injured or ill worker | 2,730 | 9.1 | 13 | 7,830 | 54.4 | 25 | 1,960 | 19.5 | 16 |
| Worker motion or position | 2,700 | 9.0 | 13 | 7,780 | 54.0 | 25 | 1,960 | 19.4 | 16 |
| Person, other than injured or ill worker | — | — | — | 110 | .8 | 13 | 60 | .6 | 41 |
| Floors, walkways, ground surfaces | 1,580 | 5.3 | 15 | 3,320 | 23.0 | 16 | 1,320 | 13.0 | 14 |
| Handtools | 1,920 | 6.4 | 10 | 2,080 | 14.4 | 10 | 900 | 8.9 | 9 |
| Ladder | 830 | 2.8 | 12 | 240 | 1.7 | 17 | 410 | 4.0 | 9 |
| Vehicles | 830 | 2.8 | 10 | 1,380 | 9.6 | 14 | 1,350 | 13.4 | 14 |
| Trucks | 360 | 1.2 | 7 | 220 | 1.5 | 13 | 250 | 2.5 | 16 |
| Cart, dolly, hand truck nonpowered | 110 | .4 | 12 | 320 | 2.2 | 14 | 490 | 4.8 | 17 |

See footnotes at end of table.

TABLE 4. Number, incidence rates¹, and median days² of nonfatal occupational injuries and illnesses involving days of job transfer or restriction³ by selected industry⁴ and case characteristics of injury or illness, private industry, 2011 — Continued

| Case characteristics (MSD, Nature, Event, Part, Source) | Air transportation | | | Warehousing and storage | | | Nursing and residential care facilities | | |
|--|--------------------|----------------|--|-------------------------|----------------|--|---|----------------|--|
| | Number | Incidence rate | Median days of job transfer or restriction | Number | Incidence rate | Median days of job transfer or restriction | Number | Incidence rate | Median days of job transfer or restriction |
| Part of body affected by the injury or illness: | | | | | | | | | |
| Head | 190 | 5.2 | 4 | 170 | 3.0 | 4 | 790 | 3.3 | 5 |
| Eye(s) | — | — | — | 80 | 1.3 | 2 | 170 | .7 | 3 |
| Neck | 210 | 5.8 | 10 | 160 | 2.7 | 21 | 1,130 | 4.7 | 8 |
| Trunk | 1,110 | 30.3 | 15 | 3,760 | 64.2 | 14 | 19,380 | 80.3 | 13 |
| Back | 940 | 25.5 | 19 | 3,180 | 54.3 | 14 | 17,170 | 71.1 | 13 |
| Upper extremities | 1,670 | 45.6 | 15 | 4,430 | 75.8 | 12 | 18,090 | 74.9 | 12 |
| Shoulder | 400 | 10.8 | 13 | 1,310 | 22.4 | 15 | 5,000 | 20.7 | 15 |
| Arm | 500 | 13.5 | 24 | 650 | 11.1 | 14 | 2,370 | 9.8 | 11 |
| Wrist | 230 | 6.2 | 18 | 720 | 12.4 | 12 | 3,830 | 15.9 | 11 |
| Hand | 470 | 12.8 | 7 | 1,460 | 25.0 | 10 | 4,980 | 20.6 | 8 |
| Lower extremities | 1,060 | 28.8 | 9 | 2,170 | 37.1 | 13 | 8,170 | 33.8 | 11 |
| Knee | 300 | 8.1 | 8 | 700 | 12.0 | 15 | 3,830 | 15.9 | 13 |
| Ankle | 130 | 3.5 | 5 | 450 | 7.6 | 12 | 1,640 | 6.8 | 11 |
| Foot | 440 | 11.9 | 14 | 660 | 11.3 | 9 | 1,340 | 5.6 | 10 |
| Body systems | 30 | .9 | 29 | 20 | .4 | 10 | 30 | .1 | 4 |
| Multiple | 130 | 3.5 | 9 | 530 | 9.1 | 14 | 5,570 | 23.1 | 13 |
| All other parts of body | — | — | — | 80 | 1.3 | 26 | 480 | 2.0 | 12 |
| Source of injury or illness: | | | | | | | | | |
| Chemicals and chemical products | — | — | — | 20 | .4 | 4 | 150 | .6 | 6 |
| Containers | 1,890 | 51.5 | 18 | 4,140 | 70.7 | 14 | 2,200 | 9.1 | 11 |
| Furniture and fixtures | 30 | .8 | 18 | 800 | 13.7 | 10 | 2,480 | 10.3 | 12 |
| Machinery | 80 | 2.3 | 6 | 320 | 5.5 | 16 | 820 | 3.4 | 10 |
| Parts and materials | 320 | 8.7 | 15 | 770 | 13.1 | 11 | 600 | 2.5 | 9 |
| Person, injured or ill worker | 670 | 18.2 | 10 | 1,950 | 33.3 | 15 | 5,080 | 21.0 | 12 |
| Worker motion or position | 670 | 18.2 | 10 | 1,880 | 32.2 | 15 | 4,980 | 20.6 | 12 |
| Person, other than injured or ill worker | 30 | .9 | 9 | — | — | — | 27,460 | 113.7 | 13 |
| Floors, walkways, ground surfaces | 200 | 5.4 | 6 | 850 | 14.5 | 12 | 7,300 | 30.2 | 12 |
| Handtools | 30 | .8 | 7 | 440 | 7.5 | 9 | 900 | 3.7 | 8 |
| Ladder | — | — | — | 50 | .9 | 22 | 100 | .4 | 18 |
| Vehicles | 730 | 19.8 | 12 | 1,420 | 24.3 | 15 | 1,020 | 4.2 | 11 |
| Trucks | 30 | .8 | 2 | 110 | 1.8 | 9 | — | — | — |
| Cart, dolly, hand truck nonpowered | 390 | 10.5 | 12 | 170 | 2.8 | 18 | 620 | 2.6 | 10 |

See footnotes at end of table.

TABLE 4. Number, incidence rates¹, and median days² of nonfatal occupational injuries and illnesses involving days of job transfer or restriction³ by selected industry⁴ and case characteristics of injury or illness, private industry, 2011 — Continued

| Case characteristics (MSD, Nature, Event, Part, Source) | Specialty trade contractors | | | Food manufacturing | | | Building material and garden equipment supplies dealers | | |
|--|-----------------------------|----------------|--|--------------------|----------------|--|---|----------------|--|
| | Number | Incidence rate | Median days of job transfer or restriction | Number | Incidence rate | Median days of job transfer or restriction | Number | Incidence rate | Median days of job transfer or restriction |
| Source of injury or illness: All other sources | 2,020 | 6.7 | 9 | 3,590 | 24.9 | 14 | 1,680 | 16.7 | 9 |

See footnotes at end of table.

TABLE 4. Number, incidence rates¹, and median days² of nonfatal occupational injuries and illnesses involving days of job transfer or restriction³ by selected industry⁴ and case characteristics of injury or illness, private industry, 2011 — Continued

| Case characteristics (MSD, Nature, Event, Part, Source) | Air transportation | | | Warehousing and storage | | | Nursing and residential care facilities | | |
|--|--------------------|----------------|--|-------------------------|----------------|--|---|----------------|--|
| | Number | Incidence rate | Median days of job transfer or restriction | Number | Incidence rate | Median days of job transfer or restriction | Number | Incidence rate | Median days of job transfer or restriction |
| Source of injury or illness: | | | | | | | | | |
| All other sources | 400 | 11.0 | 10 | 560 | 9.6 | 10 | 5,530 | 22.9 | 11 |

¹ Incidence rates represent the number of injuries and illnesses per 10,000 full-time workers and were calculated as: $(N/EH) \times 20,000,000$ where

N = number of injuries and illnesses
 EH = total hours worked by all employees during the calendar year

20,000,000 = base for 10,000 equivalent full-time workers (working 40 hours per week, 50 weeks per year)

² Median days of job transfer or restriction is the measure used to summarize the varying lengths of job transfer or restriction from work among the cases with days of job transfer or restriction. Half the cases involved more days and half involved less days than a specified median. Median days of job transfer or restriction are represented in actual values.

³ Includes only cases involving days of job transfer or restriction.

⁴ Days of job transfer or restriction pilot study. In January of 2012, the BLS Survey of Occupational Injuries and Illnesses (SO II) began to collect information on case circumstances and worker characteristics for days-of-job-transfer-or-restriction (DJTR) cases. The pilot included six three-digit industries including: Specialty trade contractors; Food manufacturing; Building material and garden equipment supplies dealers; Air transportation; Warehousing and storage; and Nursing and residential care facilities.

⁵ Musculoskeletal disorders (MSDs) include cases where the nature of the injury or illness is pinched nerve; herniated disc; meniscus tear; sprains, strains, tears; hernia (traumatic and nontraumatic); pain, swelling, and numbness; carpal or tarsal tunnel syndrome; Raynaud's syndrome or phenomenon; musculoskeletal system and connective tissue diseases and disorders, when the event or exposure leading to the injury or illness is overexertion and bodily reaction, unspecified; overexertion involving outside sources; repetitive motion involving microtasks; other and multiple exertions or bodily reactions; and rubbed, abraded, or jarred by vibration.

NOTE: Dash indicates data do not meet publication guidelines. Because of rounding and data exclusion of nonclassifiable responses, data may not sum to the totals.
 SOURCE: Bureau of Labor Statistics, U.S. Department of Labor, Survey of Occupational Injuries and Illnesses in cooperation with participating State agencies.

TABLE 5. Number and median days¹ of nonfatal occupational injuries and illnesses involving days of job transfer or restriction² by selected industry³ and worker characteristics, private industry, 2011

| Worker characteristics (Gender, Age, Race/Ethnicity, Length of service, Occupation) | Specialty trade contractors | | Food manufacturing | | Building material and garden equipment supplies dealers | |
|--|-----------------------------|--|--------------------|--|---|--|
| | Number | Median days of job transfer or restriction | Number | Median days of job transfer or restriction | Number | Median days of job transfer or restriction |
| Total | 18,090 | 10 | 29,880 | 15 | 17,800 | 14 |
| Gender: | | | | | | |
| Male | 17,640 | 10 | 19,050 | 14 | 12,830 | 13 |
| Female | 450 | 14 | 10,770 | 21 | 4,970 | 16 |
| Not reported | – | – | 60 | 1 | – | – |
| Age:⁴ | | | | | | |
| 16 - 19 | 250 | 10 | 610 | 14 | 540 | 9 |
| 20 - 24 | 1,520 | 7 | 3,030 | 13 | 2,830 | 12 |
| 25 - 34 | 5,990 | 9 | 7,380 | 14 | 4,190 | 15 |
| 35 - 44 | 4,900 | 12 | 7,260 | 15 | 3,600 | 12 |
| 45 - 54 | 3,250 | 10 | 7,030 | 20 | 3,950 | 15 |
| 55 - 64 | 1,650 | 14 | 3,390 | 19 | 2,290 | 16 |
| 65 and over | 190 | 31 | 300 | 16 | 380 | 21 |
| Not reported | 350 | 9 | 880 | 9 | 20 | 7 |
| Race or ethnic origin:⁵ | | | | | | |
| White only | 9,090 | 10 | 8,520 | 13 | 2,740 | 11 |
| Hispanic or Latino only | 4,760 | 10 | 8,540 | 15 | 410 | 9 |
| Black only | 530 | 9 | 3,850 | 21 | 330 | 6 |
| Asian only | 80 | 10 | 760 | 24 | – | – |
| American Indian or Alaskan Native only | 100 | 13 | 120 | 12 | – | – |
| Native Hawaiian or Pacific Islander only | 40 | 7 | 120 | 11 | – | – |
| Multi-race | – | – | – | – | – | – |
| Hispanic or Latino and other race | – | – | 40 | 45 | – | – |
| Not reported | 3,490 | 12 | 7,920 | 14 | 14,310 | 15 |

See footnotes at end of table.

TABLE 5. Number and median days¹ of nonfatal occupational injuries and illnesses involving days of job transfer or restriction² by selected industry³ and worker characteristics, private industry, 2011 — Continued

| Worker characteristics (Gender, Age, Race/Ethnicity, Length of service, Occupation) | Air transportation | | Warehousing and storage | | Nursing and residential care facilities | |
|--|--------------------|--|-------------------------|--|---|--|
| | Number | Median days of job transfer or restriction | Number | Median days of job transfer or restriction | Number | Median days of job transfer or restriction |
| Total | 4,410 | 12 | 11,320 | 13 | 53,650 | 12 |
| Gender: | | | | | | |
| Male | 2,920 | 12 | 8,090 | 13 | 6,790 | 10 |
| Female | 1,490 | 13 | 3,240 | 15 | 46,750 | 12 |
| Not reported | — | — | — | — | 110 | 10 |
| Age:⁴ | | | | | | |
| 16 - 19 | 80 | 6 | 290 | 7 | 1,400 | 10 |
| 20 - 24 | 350 | 8 | 1,570 | 9 | 8,080 | 10 |
| 25 - 34 | 600 | 16 | 3,380 | 14 | 13,440 | 10 |
| 35 - 44 | 1,290 | 13 | 2,420 | 12 | 10,930 | 13 |
| 45 - 54 | 1,150 | 14 | 2,340 | 15 | 11,680 | 14 |
| 55 - 64 | 890 | 14 | 1,020 | 15 | 6,000 | 12 |
| 65 and over | 30 | 5 | 150 | 17 | 880 | 14 |
| Not reported | — | — | 150 | 8 | 1,230 | 10 |
| Race or ethnic origin:⁵ | | | | | | |
| White only | 220 | 15 | 3,290 | 10 | 23,830 | 12 |
| Hispanic or Latino only | 160 | 8 | 1,350 | 20 | 4,360 | 11 |
| Black only | 60 | 7 | 1,020 | 12 | 10,020 | 10 |
| Asian only | 70 | 10 | 90 | 13 | 940 | 12 |
| American Indian or Alaskan Native only | — | — | 40 | 72 | 140 | 14 |
| Native Hawaiian or Pacific Islander only | 40 | 15 | 30 | 6 | 280 | 11 |
| Multi-race | — | — | — | — | 70 | 11 |
| Hispanic or Latino and other race | — | — | — | — | 50 | 8 |
| Not reported | 3,850 | 12 | 5,500 | 14 | 13,950 | 13 |

See footnotes at end of table.

TABLE 5. Number and median days¹ of nonfatal occupational injuries and illnesses involving days of job transfer or restriction² by selected industry³ and worker characteristics, private industry, 2011 — Continued

| Worker characteristics (Gender, Age, Race/Ethnicity, Length of service, Occupation) | Specialty trade contractors | | Food manufacturing | | Building material and garden equipment supplies dealers | |
|--|-----------------------------|--|--------------------|--|---|--|
| | Number | Median days of job transfer or restriction | Number | Median days of job transfer or restriction | Number | Median days of job transfer or restriction |
| Length of service with employer: | | | | | | |
| Less than 3 months | 2,470 | 9 | 3,250 | 12 | 1,510 | 12 |
| 3 - 11 months | 3,380 | 10 | 5,490 | 14 | 2,590 | 14 |
| 1 - 5 years | 6,500 | 10 | 10,720 | 14 | 7,550 | 14 |
| More than 5 years | 5,390 | 13 | 9,980 | 18 | 6,120 | 14 |
| Not reported | 340 | 12 | 450 | 10 | 30 | 7 |
| Summary occupational groups⁶ | | | | | | |
| Management occupations | 170 | 9 | 150 | 10 | 250 | 6 |
| Professional and related occupations | 110 | 13 | 200 | 23 | 80 | 17 |
| Service occupations | 40 | 17 | 1,390 | 15 | 220 | 20 |
| Sales and related occupations | 30 | 44 | 70 | 10 | 9,570 | 16 |
| Office and administrative support occupations | 180 | 10 | 790 | 14 | 2,420 | 12 |
| Farming, fishing, and forestry occupations | — | — | 200 | 14 | 120 | 8 |
| Construction and extraction occupations | 13,690 | 10 | 80 | 7 | 240 | 10 |
| Installation, maintenance, and repair occupations | 2,530 | 9 | 2,110 | 14 | 400 | 15 |
| Production occupations | 650 | 13 | 17,760 | 15 | 320 | 7 |
| Transportation and material moving occupations | 670 | 11 | 7,060 | 14 | 4,170 | 13 |

See footnotes at end of table.

TABLE 5. Number and median days¹ of nonfatal occupational injuries and illnesses involving days of job transfer or restriction² by selected industry³ and worker characteristics, private industry, 2011 — Continued

| Worker characteristics (Gender, Age, Race/Ethnicity, Length of service, Occupation) | Air transportation | | Warehousing and storage | | Nursing and residential care facilities | |
|--|--------------------|--|-------------------------|--|---|--|
| | Number | Median days of job transfer or restriction | Number | Median days of job transfer or restriction | Number | Median days of job transfer or restriction |
| Length of service with employer: | | | | | | |
| Less than 3 months | 80 | 5 | 1,340 | 10 | 5,420 | 11 |
| 3 - 11 months | 250 | 8 | 2,290 | 12 | 13,560 | 11 |
| 1 - 5 years | 1,360 | 10 | 3,470 | 14 | 21,390 | 12 |
| More than 5 years | 2,680 | 14 | 3,980 | 15 | 11,910 | 12 |
| Not reported | 40 | 22 | 250 | 14 | 1,370 | 10 |
| Summary occupational groups⁶ | | | | | | |
| Management occupations | 30 | 5 | 70 | 17 | 1,330 | 14 |
| Professional and related occupations | — | — | — | — | 7,600 | 10 |
| Service occupations | 60 | 11 | 180 | 21 | 42,560 | 12 |
| Sales and related occupations | — | — | 140 | 24 | 20 | 3 |
| Office and administrative support occupations | 3,480 | 13 | 3,190 | 13 | 410 | 17 |
| Farming, fishing, and forestry occupations | — | — | — | — | — | — |
| Construction and extraction occupations | — | — | — | — | 40 | 18 |
| Installation, maintenance, and repair occupations | 360 | 8 | 290 | 13 | 960 | 11 |
| Production occupations | — | — | 460 | 10 | 550 | 15 |
| Transportation and material moving occupations | 450 | 10 | 6,950 | 14 | 170 | 10 |

¹ Median days of job transfer or restriction is the measure used to summarize the varying lengths of job transfer or restriction from work among the cases with days of job transfer or restriction. Half the cases involved more days and half involved less days than a specified median. Median days of job transfer or restriction are represented in actual values.

² Includes only cases involving days of job transfer or restriction.

³ Days of job transfer or restriction pilot study. In January of 2012, the BLS Survey of Occupational Injuries and Illnesses (SO II) began to collect information on case circumstances and worker characteristics for days-of-job-transfer-or-restriction (DJTR) cases. The pilot included six three-digit industries including: Specialty trade contractors; Food manufacturing; Building material and garden equipment supplies dealers; Air transportation; Warehousing and storage; and Nursing and residential care facilities.

⁴ Information is not shown separately for injured workers under age 14; they accounted for fewer than 50 cases.

⁵ Race and ethnicity data do not add to total. Some cases may be counted as both Multi-race and Hispanic and other race.

⁶ *Standard Occupational Classification Manual*, 2010, Office of Management and Budget

NOTE: Dash indicates data do not meet publication guidelines. Because of rounding and data exclusion of nonclassifiable responses, data may not sum to the totals.

SOURCE: Bureau of Labor Statistics, U.S. Department of Labor, Survey of Occupational Injuries and Illnesses in cooperation with participating State agencies.