



# Agricultural Prices

ISSN: 1937-4216

Released October 31, 2013, by the National Agricultural Statistics Service (NASS), Agricultural Statistics Board, United States Department of Agriculture (USDA).

## Special Note

USDA's National Agricultural Statistics Service is updating the price index methodology beginning with the January 2014 *Agricultural Prices* release. Methodological changes include updating the current base reference (1990-1992) to 2011; increasing vegetable, fruit, and nut commodity coverage; reclassification of the prices received commodity groups; and updating monthly commodity market weights.

USDA's National Agricultural Statistics Service is suspending a number of statistical surveys and reports resulting from reduced funding. Suspended commodity programs impacting the *Agricultural Prices* report are non-citrus fruit, tree nuts, and vegetables. Check the NASS website at [www.nass.usda.gov](http://www.nass.usda.gov) for any future updates to these programs

## October Farm Prices Received Index Up 1 Point

The preliminary All Farm Products Index of Prices Received by Farmers in October, at 187 percent, based on 1990-1992=100, increased 1 point (0.5 percent) from September. The Crop Index is down 3 points (1.5 percent) but the Livestock Index is unchanged. Producers received higher prices for wheat and lower prices for corn, soybeans, and potatoes. In addition to prices, the overall index is also affected by the seasonal change based on a 3-year average mix of commodities producers sell. Increased monthly movement of soybeans, corn, cottonseed, and cotton offset the decreased marketing of wheat, milk, hogs, and hay.

The preliminary All Farm Products Index is down 23 points (11 percent) from October 2012. The Food Commodities Index, at 189, increased 8 points (4.4 percent) from last month but decreased 7 points (3.6 percent) from October 2012.

## Prices Paid Index up 1 Point

The October Index of Prices Paid for Commodities and Services, Interest, Taxes, and Farm Wage Rates (PPITW) is 218 percent of the 1990-1992 average. The index is up 1 point (0.5 percent) from September but unchanged from October 2012. Higher prices in October for concentrates, feeder cattle, feeder pigs, and nitrogen offset lower prices for feed grains, complete feeds, diesel, and gasoline.

## Prices Received, Prices Paid, and Ratio of Prices Received to Prices Paid Indexes 1990-1992 Base – United States: October 2013 with Comparisons

Index	October	September	October
	2012	2013	2013
Prices received by farmers .....	210	186	187
Prices paid by farmers .....	218	217	218
Ratio of prices received to prices paid .....	96	86	86

## Contents

Prices Received by Farmers .....	4
Prices Received Indexes – United States: October 2013 with Comparisons .....	5
Prices Received and Prices Paid Indexes by Month for Selected Groups – United States: 2012 and 2013, 1990-1992 Base .....	5
Received and Paid Indexes, Annual Average – United States: 1990-1992=100 Chart.....	6
Crop Farm Received and Paid Indexes, All Items by Quarter – United States: 1990-1992=100 Chart .....	7
Livestock Farm Received and Paid Indexes, All Items by Quarter – United States: 1990-1992=100 Chart.....	7
Received Indexes by Month, Livestock Products, All Products, and All Crops – United States: 1990-1992=100 Chart.....	8
Received Indexes by Month, Food Grains, Feed Grains & Hay, and Oilseeds – United States: 1990-1992=100 Chart.....	8
Received Indexes by Month, Fruit & Nut and Commercial Vegetables – United States: 1990-1992=100 Chart.....	9
Received Indexes by Month, Meat Animal, Dairy Product, and Poultry & Egg – United States: 1990-1992=100 Chart.....	9
Prices Received for Field Crops and Fruits – United States: October 2013 with Comparisons .....	10
Prices Received for Vegetables and Livestock – United States: October 2013 with Comparisons .....	11
Prices Received for Corn by Month – United States Chart.....	12
Prices Received for Wheat by Month – United States Chart .....	12
Prices Received for Upland Cotton by Month – United States Chart .....	13
Prices Received for Soybeans by Month – United States Chart .....	13
Prices Received for Cattle by Month – United States Chart .....	14
Prices Received for Milk by Month – United States Chart .....	14
Prices Received for Hogs by Month – United States Chart .....	15
Prices Received for Poultry by Month – United States Chart.....	15
Prices Received for All Wheat, Corn, and Soybeans by Month – United States: 2013 with Comparisons .....	16
Prices Received for Beef Cattle and All Hogs by Month – United States: 2013 with Comparisons .....	16
Prices Received for All Wheat – States and United States: October 2013 with Comparisons .....	17
Prices Received for Winter Wheat – States and United States: October 2013 with Comparisons .....	17
Prices Received for Durum Wheat – States and United States: October 2013 with Comparisons .....	18
Prices Received for Spring Wheat – States and United States: October 2013 with Comparisons.....	18
Prices Received for All Barley – States and United States: October 2013 with Comparisons .....	19
Prices Received for Malting Barley – States: October 2013 with Comparisons.....	19
Prices Received for Feed Barley – States: October 2013 with Comparisons.....	19
Prices Received for Corn – States and United States: October 2013 with Comparisons.....	20
Prices Received for Soybeans – States and United States: October 2013 with Comparisons.....	20
Prices Received for Oats – States and United States: October 2013 with Comparisons.....	21
Prices Received for Sorghum Grain – States and United States: October 2013 with Comparisons .....	21
Prices Received for Dry Beans – States and United States: October 2013 with Comparisons.....	22
Prices Received for Peanuts (in shell) – States and United States: October 2013 with Comparisons .....	22
Prices Received for Sunflower – States and United States: October 2013 with Comparisons .....	23
Prices Received for Canola – States and United States: October 2013 with Comparisons.....	23
Prices Received for Flaxseed – States and United States: October 2013 with Comparisons.....	23
Prices Received for Upland Cotton and Cottonseed – States and United States: October 2013 with Comparisons.....	24
Prices Received and Farm Marketings for Upland Cotton and Rice – United States: October 2013 with Comparisons .....	24
Prices Received for Hay by Type – States and United States: October 2013 with Comparisons .....	25
Prices Received for Apples – States and United States: October 2013 with Comparisons.....	25
Prices Received for Citrus Fruits by Utilization – States and United States: October 2012.....	26
Prices Received for Citrus Fruits by Utilization – States and United States: September 2013.....	27
Prices Received for Citrus Fruits by Utilization – States and United States: October 2013.....	28
Prices Received for Potatoes – States and United States: October 2013 with Comparisons .....	29

Prices Received for All Milk – States and United States: October 2013 with Comparisons.....	30
Prices Received for Milk Cows – States and United States: October 2013 with Comparisons.....	31
Commodity Parity Prices and Price as Percent of Parity Price – United States: October 2013 with Comparisons.....	32
Commodity Parity Prices – United States: October 2013 with Comparisons.....	33
Marketing Year for Specified Commodities .....	35
Cotton and Cottonseed Market Year Average Prices Received – States and United States: Marketing Years 2011 and 2012 .....	35
Prices Received for Upland Cotton by Month – States and United States: Marketing Years 2011-2012 and 2012-2013 .....	36
Prices Received for Cottonseed by Month – States and United States: Marketing Year 2012-2013 .....	38
Percent of Upland Cotton Farm Marketings by Month – States and United States: Marketing Years 2011-2012 and 2012-2013 .....	39
Upland Cotton Monthly Marketings – Marketing Years 2011-2012 and 2012-2013.....	40
Prices Received Indexes as a Percent of 1990-1992 Base, Monthly and Annual Average – United States: 2009-2013 .....	41
Prices Received Indexes as a Percent of 1910-1914 Base, Monthly and Annual Average – United States: 2009-2013 .....	43
Reliability of Prices Received Estimates .....	45
Prices Paid by Farmers.....	46
Prices Paid Indexes and Related Parity Ratios – United States: October 2013 with Comparisons .....	47
Prices Paid Indexes and Annual Weights for Input Components and Sub-components – United States: October 2013 with Comparisons .....	48
Paid Indexes by Month, All Items and Production Items – United States: 1990-1992=100 Chart .....	49
Paid Indexes, Annual Averages, Production Items, Interest, Taxes, and Wages – United States: 1990-1992=100 Chart .....	49
Paid Indexes by Farm Type, All Items – United States: 1990-1991=100 Chart.....	50
Paid Indexes by Origin, All Production Items – United States: 1990-1992=100 Chart .....	50
Paid Indexes by Non-Farm Sector, Supplies & Repairs, Fertilizer, Machinery, and Fuel – United States: 1990-1992=100 Chart .....	51
Paid Indexes by Month, Feed and Replacement Livestock – United States: 1990-1992=100 Chart.....	51
Feed Price Ratios – United States: October 2013 with Comparisons.....	52
Prices Received Used to Calculate Feed Price Ratios – United States: October 2013 with Comparisons .....	52
Prices Paid for Feeder Livestock – United States: October 2013 with Comparisons .....	52
Prices Paid Indexes as a Percent of 1990-1992 Base, Monthly and Annual Average – United States: 2009-2013 .....	53
Prices Paid Indexes as a Percent of 1910-1914 Base, Monthly and Annual Average – United States: 2009-2013 .....	56
Prices Paid Index Sub-Components as a Percent of 1990-1992 Base, Monthly and Annual Average – United States: 2009-2013 .....	59
Reliability of Prices Paid Estimates .....	65
Information Contacts .....	66

## Prices Received by Farmers

The October All Farm Products Index is 187 percent of its 1990-1992 base, up 0.5 percent from the September index but 11 percent below the October 2012 index.

**All crops:** The October index, at 203, decreased 1.5 percent from September and is 15 percent below October 2012. Index decreases for feed grains & hay, oilseeds, and potatoes & dry beans more than offset the index increases for commercial vegetables, food grains, fruits & nuts, and upland cotton.

**Food grains:** The October index, at 237, is 3.9 percent above the previous month but 11 percent below a year ago. The October price for all wheat, at \$7.09 per bushel, is up 29 cents from September but \$1.29 below October 2012.

**Feed grains & hay:** The October index, at 199, is down 15 percent from last month and 32 percent below a year ago. The corn price, at \$4.49 per bushel, is down 91 cents from last month and \$2.29 below October 2012. The all hay price, at \$177 per ton, is up \$1.00 from September but down \$14.00 from last October. Sorghum grain, at \$7.34 per cwt, is 76 cents below September and \$5.06 below October last year.

**Cotton, Upland:** The October index, at 129, is up 4.9 percent from September and 12 percent above last year. The October price, at 77.9 cents per pound, is up 3.3 cents from the previous month and 8.1 cents above last October.

**Oilseeds:** The October index, at 225, is down 3.0 percent from September and 8.5 percent lower than October 2012. The soybean price, at \$12.60 per bushel, decreased 70 cents from September and is \$1.60 below October 2012.

**Fruits & nuts:** The October index, at 212, is up 2.4 percent from September but 5.4 percent lower than a year ago. Price increases for lemons and oranges more than offset the lower price for grapefruit.

**Commercial vegetables:** The October index, at 206, is up 23 percent from last month and 36 percent above October 2012.

**Potatoes & dry beans:** The October index, at 152, is down 7.9 percent from last month but 12 percent above October 2012. The all potato price, at \$8.01 per cwt, is down 77 cents from September but up 99 cents from last October. The all dry bean price, at \$39.00 per cwt, is down 10 cents from the previous month but \$1.30 above October 2012.

**Livestock and products:** The October index, at 163, is unchanged from last month but up 0.6 percent from October 2012. Compared with a year ago, prices are higher for broilers, hogs, and calves. Prices for milk, turkeys, cattle, and market eggs are down from last year.

**Meat animals:** The October index, at 164, is down 0.6 percent from last month but 1.9 percent higher than last year. The October hog price, at \$69.70 per cwt, is down \$1.00 from September but \$7.70 higher than a year ago. The October beef cattle price of \$122 per cwt is down \$1.00 from last month and October 2012.

**Dairy products:** The October index, at 155, is up 0.6 percent from a month ago but 6.1 percent lower than October last year. The October all milk price of \$20.30 per cwt is up 20 cents from last month but down \$1.30 from October 2012.

**Poultry & eggs:** The October index, at 168, is down 1.2 percent from September but 3.7 percent above a year ago. The October market egg price, at 83.6 cents per dozen, increased 1.3 cents from September but is 0.1 cents below October 2012. The October broiler price, at 53.0 cents per pound, is down 1.0 cent from September but 4.0 cents above a year ago. The October turkey price, at 70.1 cents per pound, is up 2.2 cents from the previous month but down 6.8 cents from a year earlier.

## Prices Received Indexes – United States: October 2013 with Comparisons

[Revised historical price indexes for months not shown are available at [www.nass.usda.gov](http://www.nass.usda.gov)]

Index	1910-1914 Base				1990-1992 Base		
	1990-1992 Average	October 2012	September 2013	October 2013	October 2012	September 2013	October 2013
	(percent)	(percent)	(percent)	(percent)	(percent)	(percent)	(percent)
All products .....	639	1332	1180	1189	210	186	187
All crops .....	500	1182	1021	1004	238	206	203
Food grains .....	325	839	723	751	265	228	237
Feed grains & hay .....	363	1045	837	710	293	235	199
Cotton, Upland .....	517	591	631	659	115	123	129
Tobacco .....	1263	1559	1760	1760	103	116	116
Oilseeds .....	554	1350	1273	1233	246	232	225
Fruits & nuts .....	716	1563	1447	1479	224	207	212
Commercial vegetables .....	698	1077	1201	1471	151	168	206
Potatoes & dry beans .....	540	687	835	771	136	165	152
Other crops .....	493	643	645	645	131	131	131
Livestock and products .....	768	1242	1253	1252	162	163	163
Meat animals .....	1021	1637	1679	1671	161	165	164
Dairy products .....	799	1329	1237	1249	165	154	155
Poultry & eggs .....	282	455	477	473	162	170	168
Food commodities .....	(NA)	(NA)	(NA)	(NA)	196	181	189

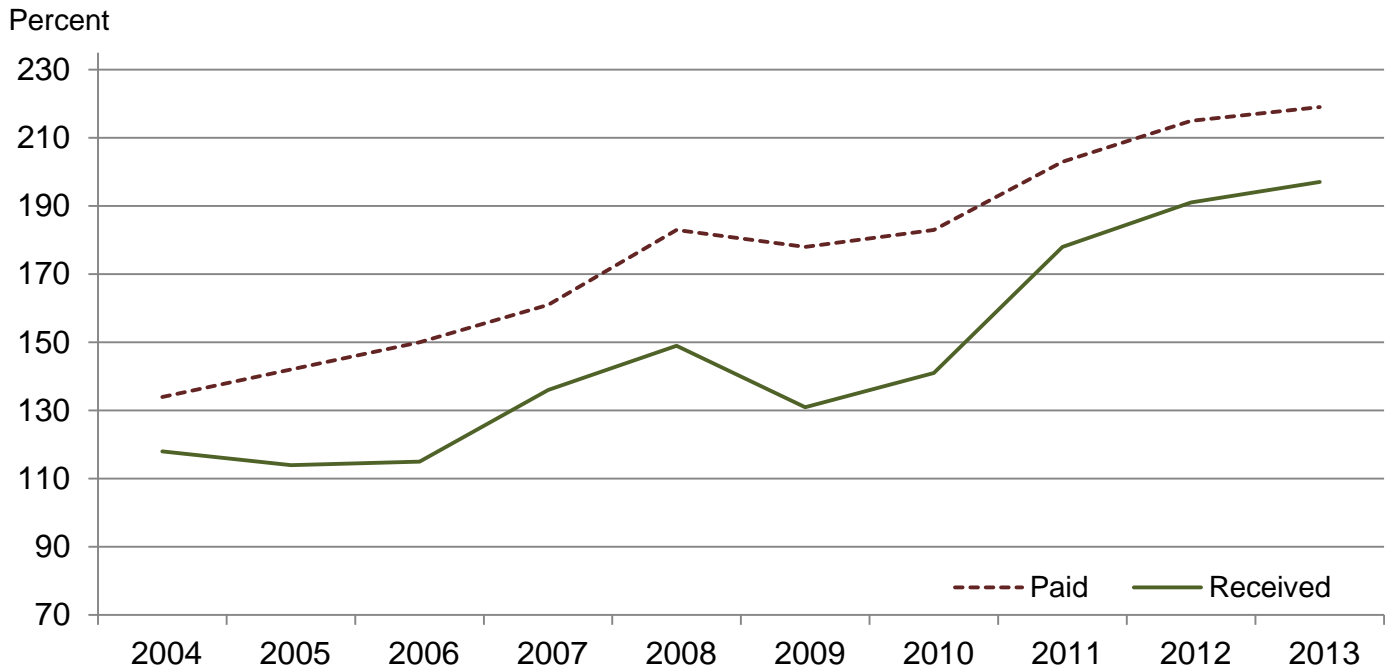
(NA) Not available.

## Prices Received and Prices Paid Indexes by Month for Selected Groups – United States: 2012 and 2013, 1990-1992 Base

[Revised historical price indexes for months not shown are available at [www.nass.usda.gov](http://www.nass.usda.gov). Blank data cells indicate estimation period has not yet begun]

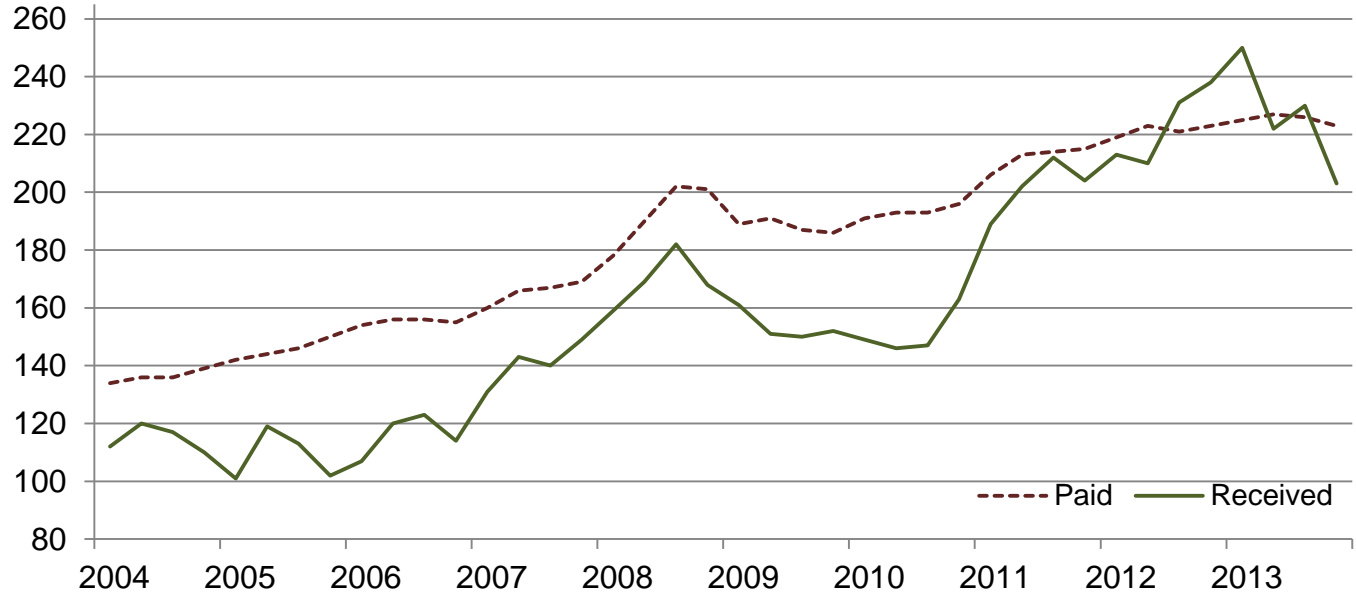
Month	Index of prices received						Index of prices paid			
	All farm products		All crops		Livestock and products		All items		Production items	
	2012	2013	2012	2013	2012	2013	2012	2013	2012	2013
	(percent)	(percent)	(percent)	(percent)	(percent)	(percent)	(percent)	(percent)	(percent)	(percent)
January .....	189	217	213	250	155	166	210	219	222	233
February .....	181	199	207	234	156	162	211	220	223	234
March .....	184	201	211	238	159	164	215	220	229	234
April .....	179	192	210	222	152	164	215	219	228	233
May .....	180	196	214	224	151	170	214	219	228	233
June .....	183	200	214	233	152	167	214	219	227	233
July .....	191	200	231	230	149	164	213	220	227	234
August .....	194	189	234	214	154	163	216	216	231	229
September .....	195	186	227	206	156	163	217	217	232	230
October .....	210	187	238	203	162	163	218	218	232	230
November .....	207		238		167		217		231	
December .....	199		226		165		217		231	

# Received and Paid Indexes, Annual Average – United States: 1990-1992=100



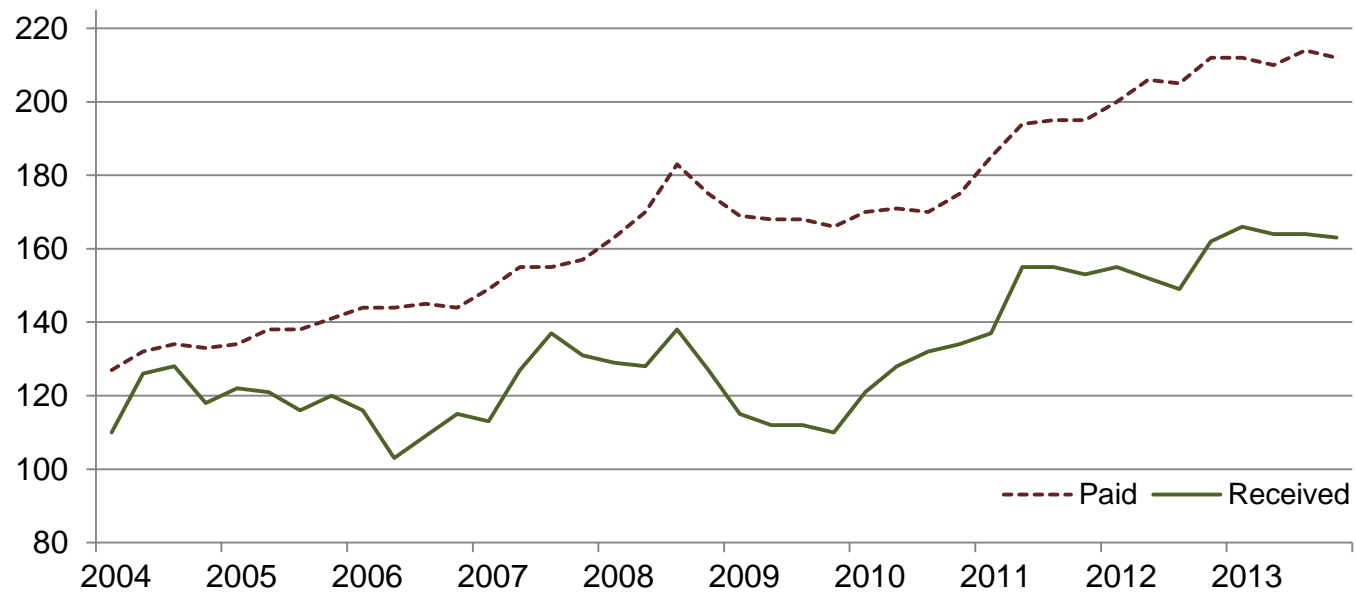
**Crop Farm Received and Paid Indexes,  
All Items by Quarter –  
United States: 1990-1992=100**

Percent

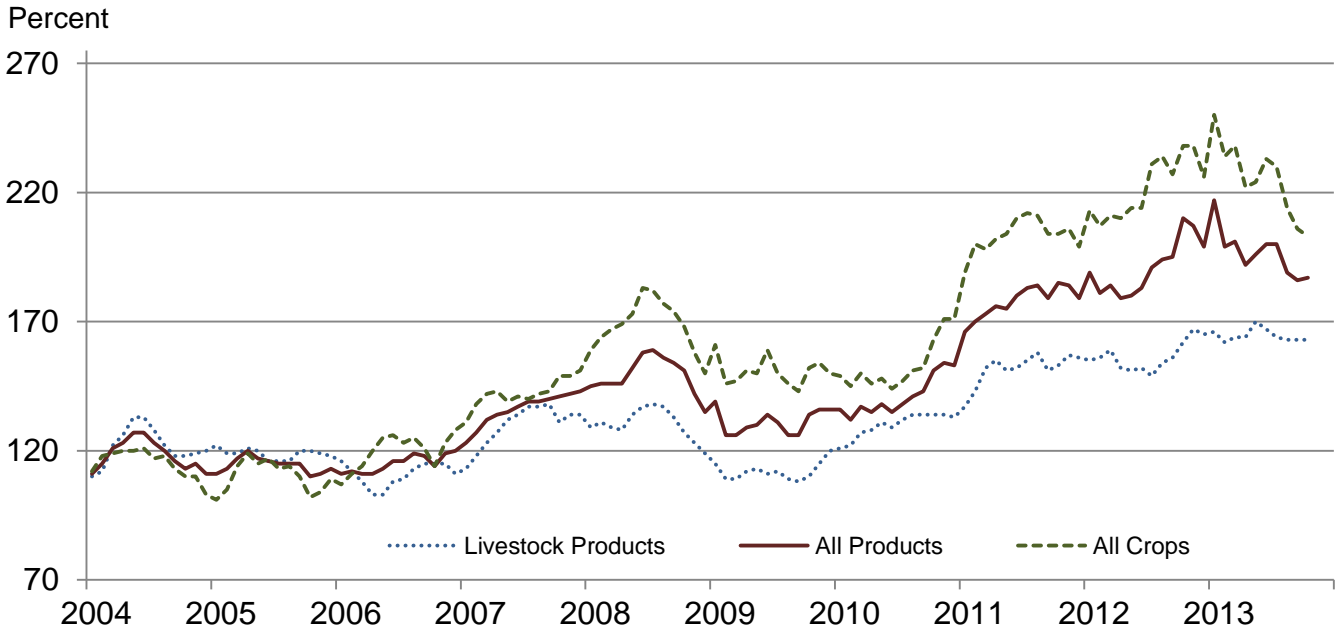


**Livestock Farm Received and Paid Indexes,  
All Items by Quarter –  
United States: 1990-1992=100**

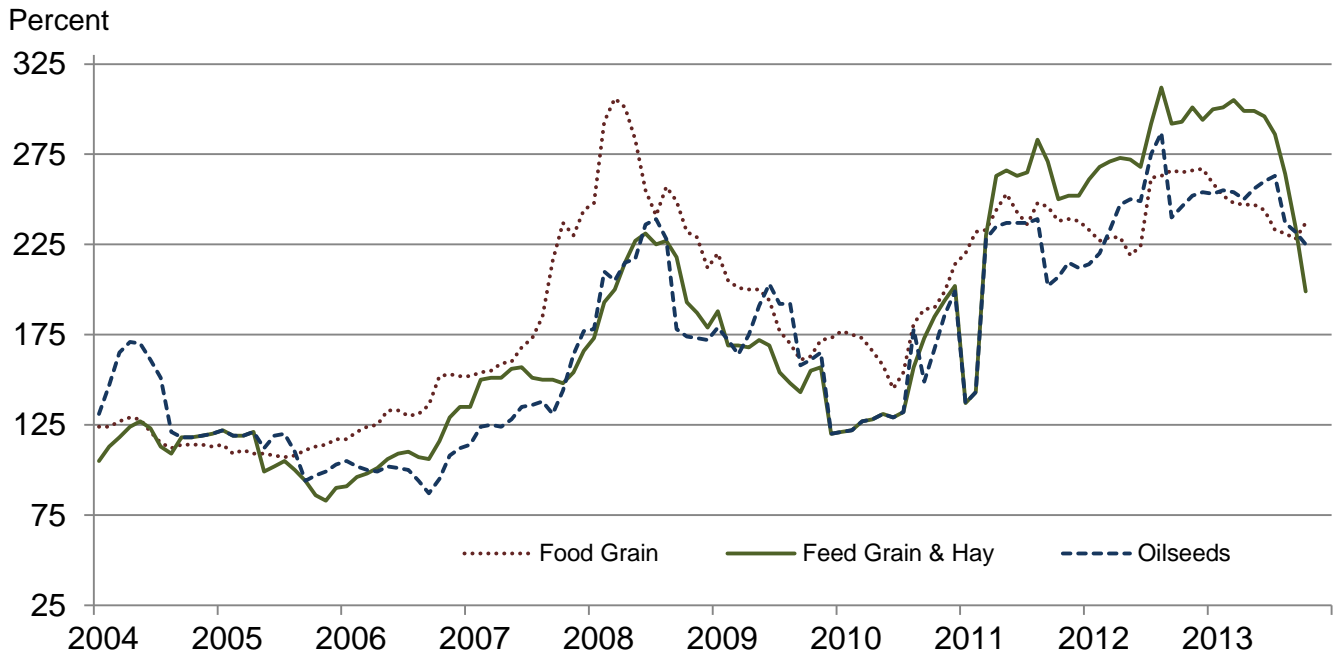
Percent



**Received Indexes by Month,  
Livestock Products, All Products, and All Crops –  
United States: 1990-1992=100**

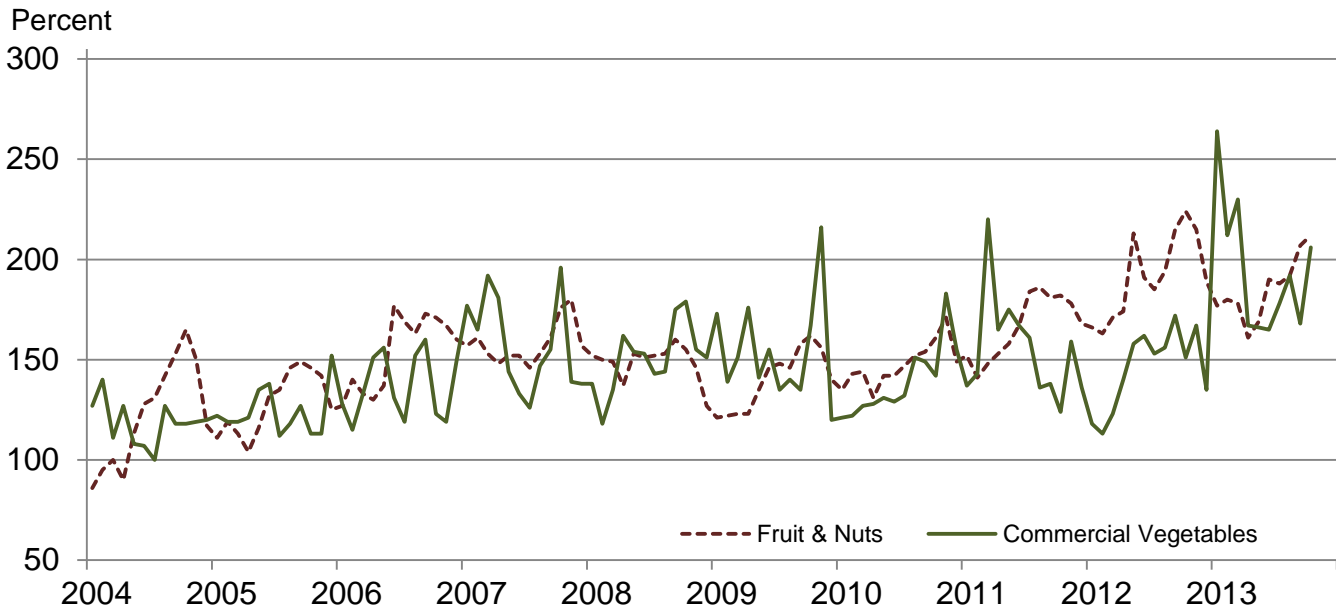


**Received Indexes by Month,  
Food Grains, Feed Grains & Hay, and Oilseeds –  
United States: 1990-1992=100**

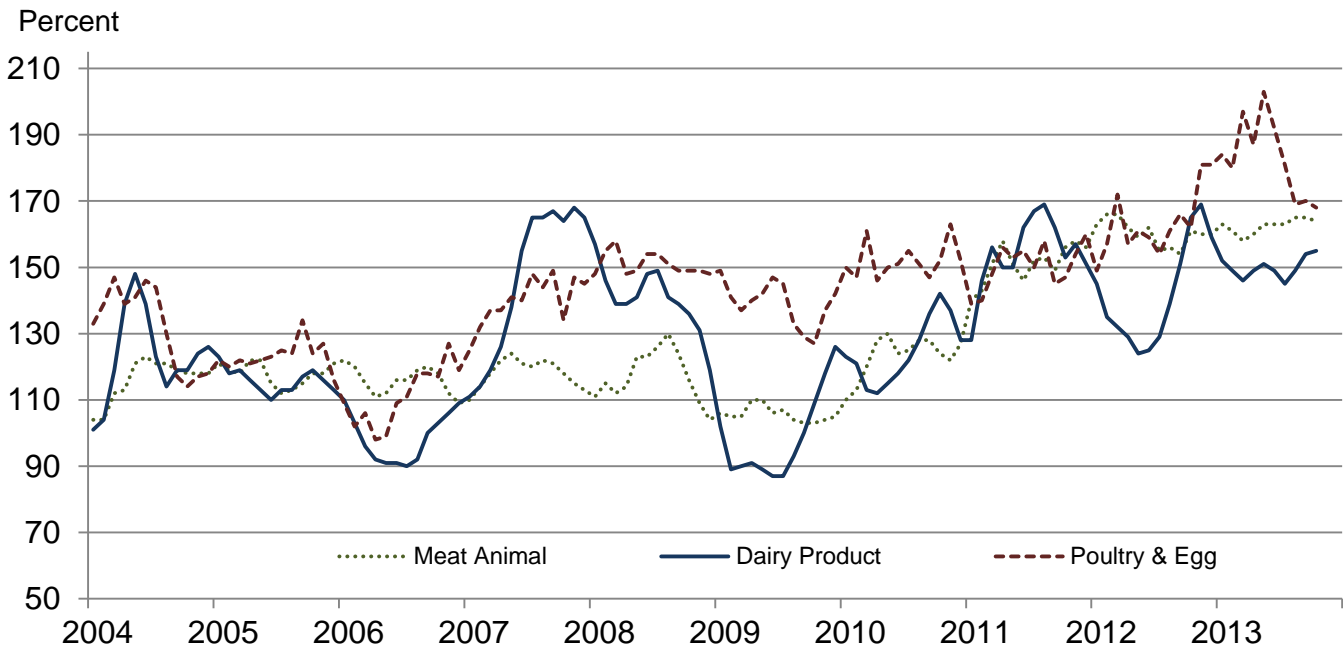




**Received Indexes by Month,  
Fruit & Nuts and Commercial Vegetables –  
United States: 1990-1992=100**



**Received Indexes by Month,  
Meat Animal, Dairy Product, and Poultry & Egg –  
United States: 1990-1992=100**



**Prices Received for Field Crops and Fruits – United States: October 2013 with Comparisons**

Commodity	Average 1990-1992	October 2012	September 2013	Preliminary October 2013
<b>Field crops</b>				
Austrian winter peas .....	dollars/cwt (NA)	20.90	(D)	(D)
Barley, all .....	dollars/bushel 2.12	6.49	5.81	5.48
Feed .....	dollars/bushel 1.90	5.72	4.28	3.70
Malting .....	dollars/bushel 2.43	6.65	6.44	6.24
Beans, dry edible .....	dollars/cwt 19.10	37.70	39.10	39.00
Canola .....	dollars/cwt (NA)	26.60	20.70	19.80
Chickpeas, all .....	dollars/cwt (NA)	33.50	33.50	(D)
Large .....	dollars/cwt (NA)	37.90	34.00	(D)
Small .....	dollars/cwt (NA)	26.60	24.00	(D)
Corn .....	dollars/bushel 2.30	6.78	5.40	4.49
Cotton, Upland .....	dollars/pound 0.606	0.698	0.746	0.779
Cottonseed .....	dollars/ton 96.00	254.00	190.00	281.00
Flaxseed .....	dollars/bushel 4.27	13.50	13.10	13.20
Hay, all, baled .....	dollars/ton 76.30	191.00	176.00	177.00
Alfalfa .....	dollars/ton 77.20	212.00	194.00	193.00
Other .....	dollars/ton 60.00	144.00	136.00	141.00
Lentils .....	dollars/cwt (NA)	22.30	23.30	21.10
Oats .....	dollars/bushel 1.22	3.93	3.57	3.51
Peanuts, in-shell .....	dollars/pound 0.304	0.337	0.255	0.254
Peas, dry edible .....	dollars/cwt (NA)	15.30	14.40	12.70
Potatoes .....	dollars/cwt 5.82	7.02	8.78	8.01
Rice, all .....	dollars/cwt 7.07	14.40	15.60	16.20
Long .....	dollars/cwt (NA)	13.90	15.30	15.60
Medium and short .....	dollars/cwt (NA)	16.80	18.10	18.80
Sorghum grain .....	dollars/cwt 3.75	12.40	8.10	7.34
Soybeans .....	dollars/bushel 5.61	14.20	13.30	12.60
Sunflowers, all .....	dollars/cwt 9.50	25.90	22.60	19.30
Wheat, all .....	dollars/bushel 2.96	8.38	6.80	7.09
Winter .....	dollars/bushel 2.93	8.33	6.79	7.09
Durum .....	dollars/bushel 2.86	7.61	7.90	7.33
Other spring .....	dollars/bushel 3.11	8.56	6.71	7.06
Hard red winter <sup>1</sup> .....	dollars/bushel (NA)	8.43	6.92	(NA)
Soft red winter <sup>1</sup> .....	dollars/bushel (NA)	8.35	6.19	(NA)
Hard red spring <sup>1</sup> .....	dollars/bushel (NA)	8.60	6.72	(NA)
White <sup>1</sup> .....	dollars/bushel 3.24	8.10	6.71	(NA)
<b>Fruits</b>				
<b>Citrus, equivalent on-tree</b>				
Grapefruit .....	dollars/box 5.77	12.49	8.76	(D)
Lemons .....	dollars/box 10.10	16.38	29.99	33.71
Oranges .....	dollars/box 5.79	9.57	12.39	12.94
Tangelos .....	dollars/box 5.82	(S)	(S)	(S)
Tangerines and mandarins .....	dollars/box 15.11	12.70	(S)	(D)
<b>Noncitrus, fresh</b>				
Apples <sup>2</sup> .....	dollars/pound 0.212	0.535	(NA)	(NA)
Grapes <sup>2</sup> .....	dollars/ton 506.00	1,540.00	(NA)	(NA)
Peaches <sup>2</sup> .....	dollars/ton 432.00	(S)	(NA)	(NA)
Pears <sup>2</sup> .....	dollars/ton 370.00	692.00	(NA)	(NA)
Strawberries .....	dollars/cwt 56.00	90.10	(NA)	(NA)

(D) Withheld to avoid disclosing data for individual operations.

(NA) Not available.

(S) Insufficient number of reports to establish an estimate.

<sup>1</sup> Preliminary estimates not set for this item.

<sup>2</sup> Equivalent packinghouse-door returns for California, Michigan, New York (apples only), and Washington (apples, peaches, and pears). Prices as sold for other states.

# Prices Received for Vegetables and Livestock – United States: October 2013 with Comparisons

[Price data source for livestock and poultry commodities is United States Department of Agriculture's Agricultural Marketing Service]

Commodity	Average 1990-1992	October 2012	September 2013	Preliminary October 2013
<b>Vegetables, fresh <sup>1</sup></b>				
Asparagus .....dollars/cwt	79.80	(S)	(NA)	(NA)
Beans, snap <sup>2</sup> .....dollars/cwt	(NA)	46.90	(NA)	(NA)
Broccoli .....dollars/cwt	22.50	30.30	(NA)	(NA)
Cantaloupes <sup>2</sup> .....dollars/cwt	(NA)	25.20	(NA)	(NA)
Carrots .....dollars/cwt	13.20	26.00	(NA)	(NA)
Cauliflower .....dollars/cwt	26.80	27.40	(NA)	(NA)
Celery .....dollars/cwt	11.60	19.10	(NA)	(NA)
Corn, sweet .....dollars/cwt	15.70	25.60	(NA)	(NA)
Cucumbers <sup>2</sup> .....dollars/cwt	(NA)	16.80	(NA)	(NA)
Lettuce .....dollars/cwt	11.90	17.70	(NA)	(NA)
Onions <sup>3</sup> .....dollars/cwt	12.80	10.10	(NA)	(NA)
Tomatoes .....dollars/cwt	32.30	20.90	(NA)	(NA)
<b>Livestock</b>				
Calves .....dollars/cwt	94.30	164.00	182.00	176.00
Cattle, all beef .....dollars/cwt	72.90	123.00	123.00	122.00
Cows <sup>4</sup> .....dollars/cwt	49.60	77.30	82.50	79.70
Steers and heifers .....dollars/cwt	77.10	127.00	127.00	128.00
Milk cows <sup>5</sup> .....dollars/head	1130.00	1390.00	(NA)	1400.00
Hogs, all .....dollars/cwt	47.70	62.00	70.70	69.70
Barrows and gilts .....dollars/cwt	48.40	62.70	70.60	69.40
Sows .....dollars/cwt	39.50	43.30	74.40	77.40
<b>Dairy and poultry</b>				
Milk, all <sup>6</sup> .....dollars/cwt	13.06	21.60	20.10	20.30
Fat test ..... percent	3.66	3.80	3.68	3.77
Broilers, live <sup>7</sup> .....dollars/pound	0.317	0.490	0.540	0.530
Eggs, all <sup>8</sup> .....dollars/dozen	0.643	1.020	1.040	1.040
Market <sup>8 9</sup> .....dollars/dozen	0.546	0.837	0.823	0.836
Turkeys, live <sup>8 10</sup> .....dollars/pound	0.380	0.769	0.679	0.701
<b>Adjusted for seasonal variation</b>				
Eggs, all .....dollars/dozen	0.545	1.010	1.070	1.030
Seasonal factor ..... percent	100	101	97	101
Milk, all <sup>6</sup> .....dollars/cwt	9.71	19.90	19.20	18.70
Seasonal factor ..... percent	100	109	105	109

(NA) Not available.

(S) Insufficient number of reports to establish an estimate.

<sup>1</sup> Beginning January 2006, point of first sale. FOB shipping point for prior years.

<sup>2</sup> Monthly estimates began January 1995.

<sup>3</sup> Includes some processing.

<sup>4</sup> Beef cows and cull dairy cows sold for slaughter.

<sup>5</sup> Animals sold for dairy herd replacement only. Prices available for January, April, July, and October.

<sup>6</sup> Before deductions for hauling. Includes quality, quantity, and other premiums. Excludes hauling subsidies.

<sup>7</sup> Live weight equivalent price.

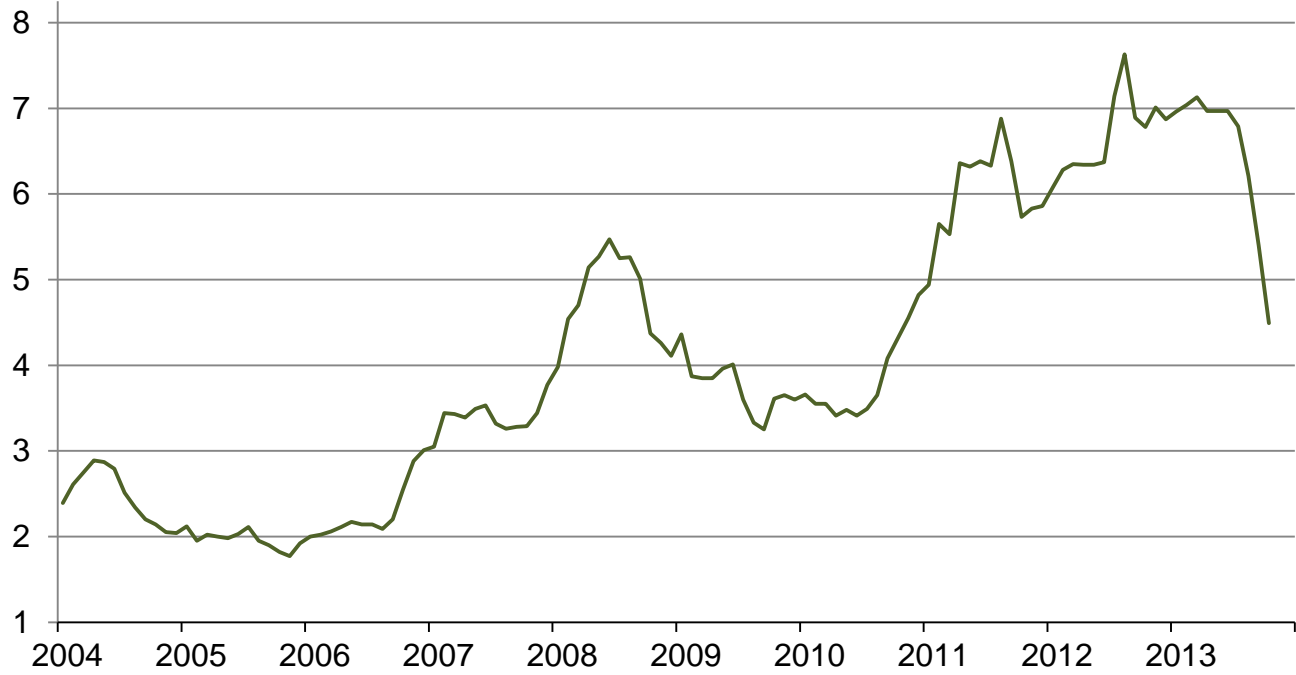
<sup>8</sup> Mid-month price.

<sup>9</sup> Also referred to as table eggs.

<sup>10</sup> Live weight equivalent price is used when actual live weight price is not available. Beginning January 2011, price reflects FOB shipping point basis. Prior year price reflects delivered basis.

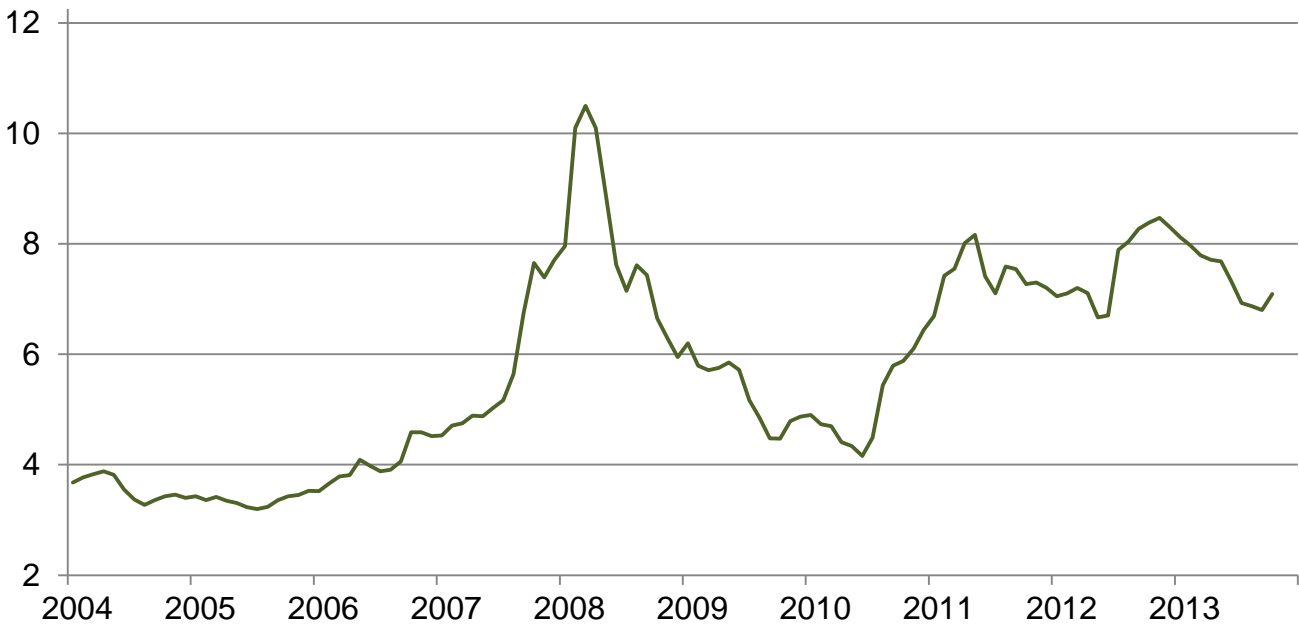
## Prices Received for Corn by Month – United States

Dollars per bushel



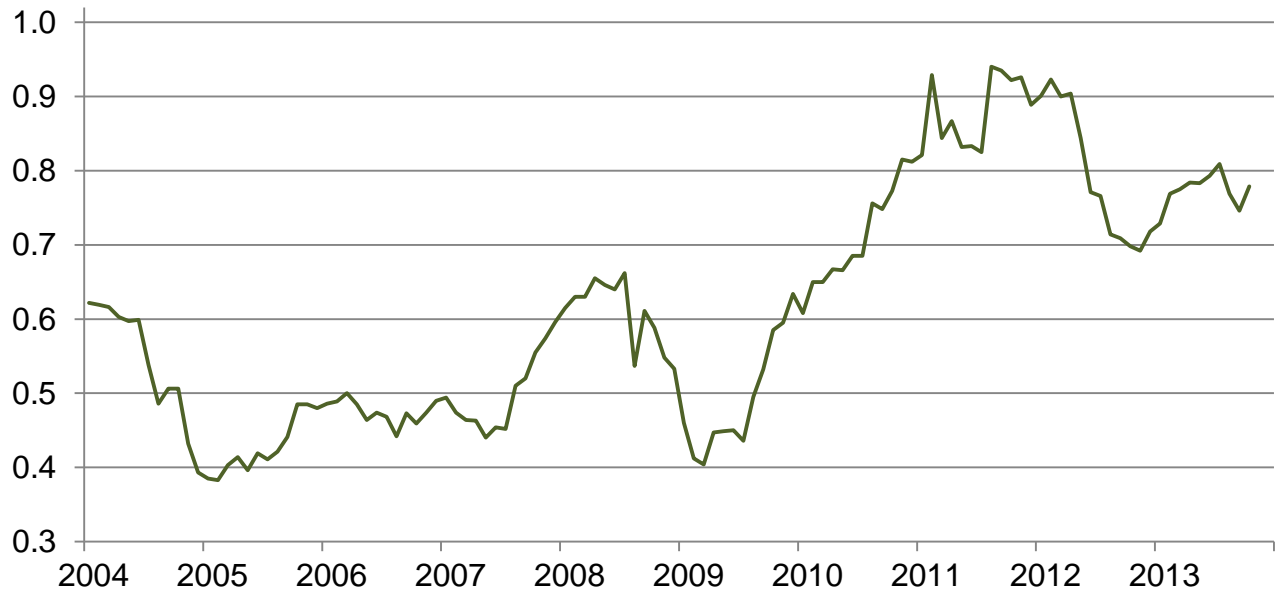
## Prices Received for Wheat by Month – United States

Dollars per bushel



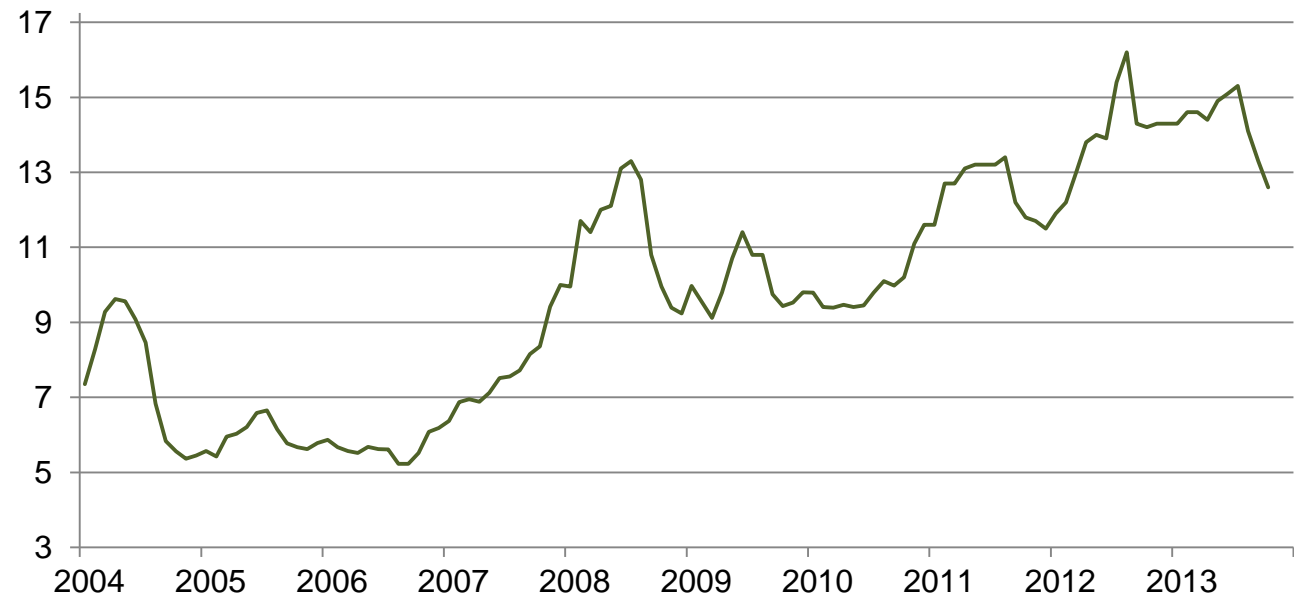
## Prices Received for Upland Cotton by Month – United States

Dollars per pound



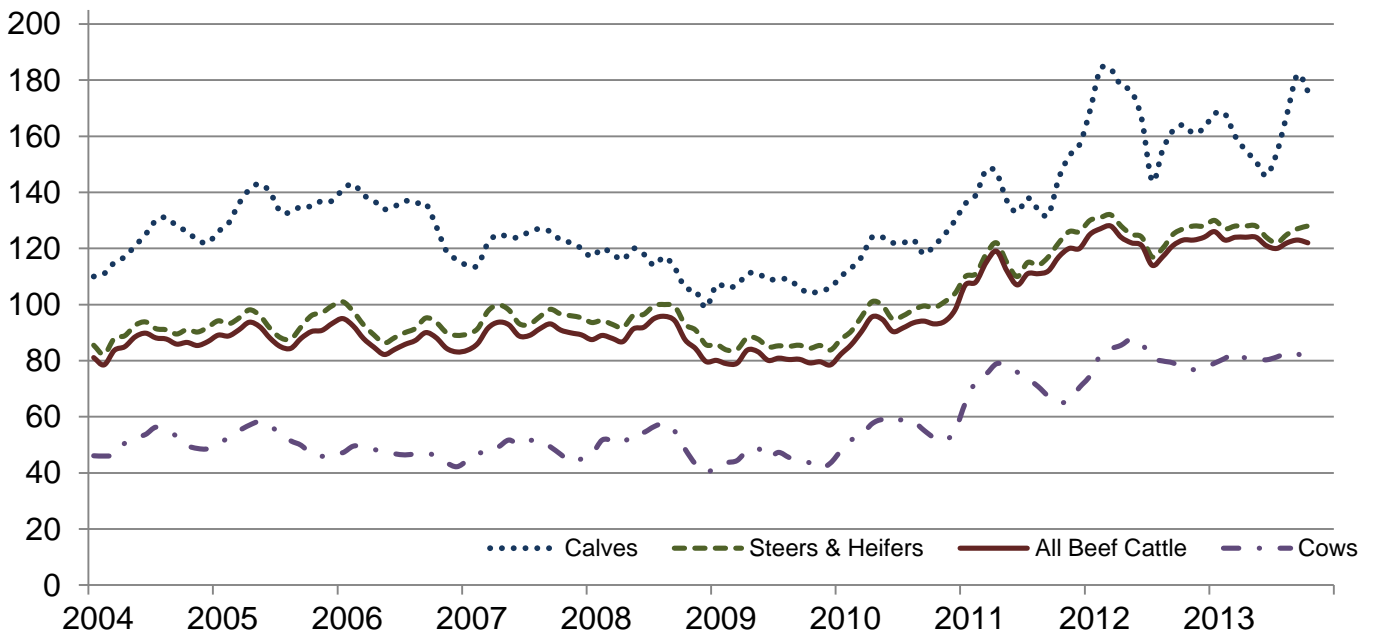
## Prices Received for Soybeans by Month – United States

Dollars per bushel



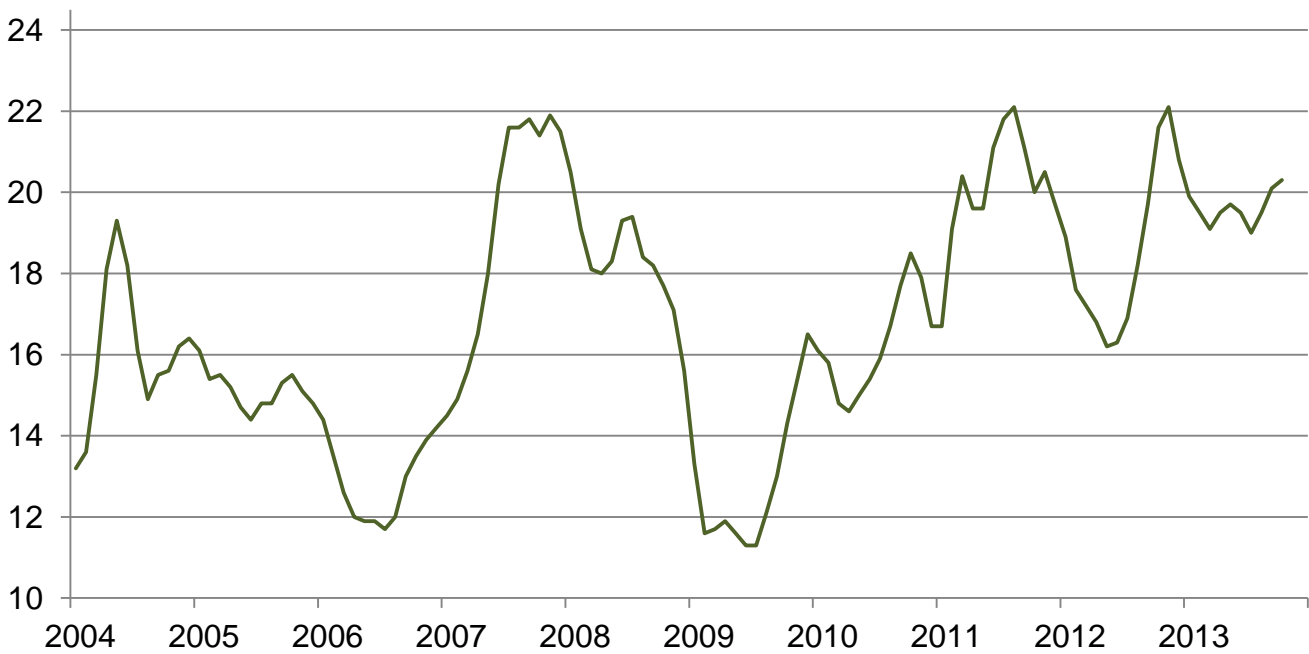
## Prices Received for Cattle by Month – United States

Dollars per cwt



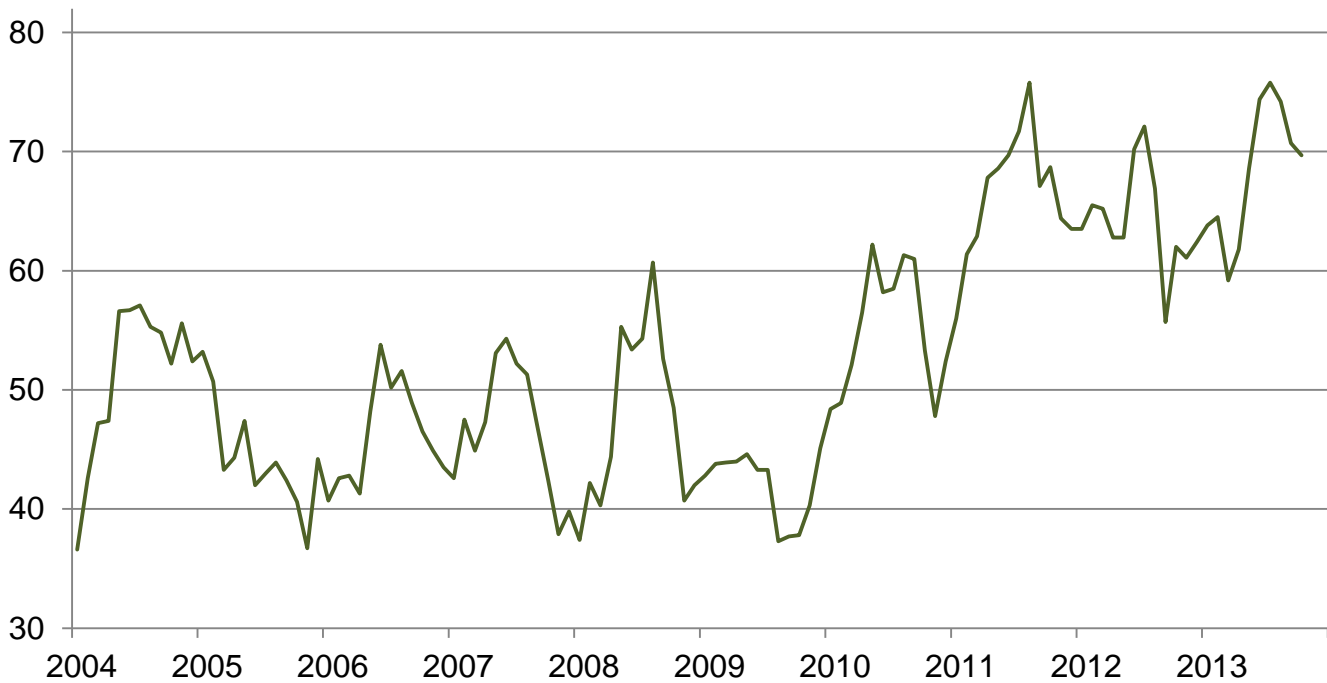
## Prices Received for Milk by Month – United States

Dollars per cwt



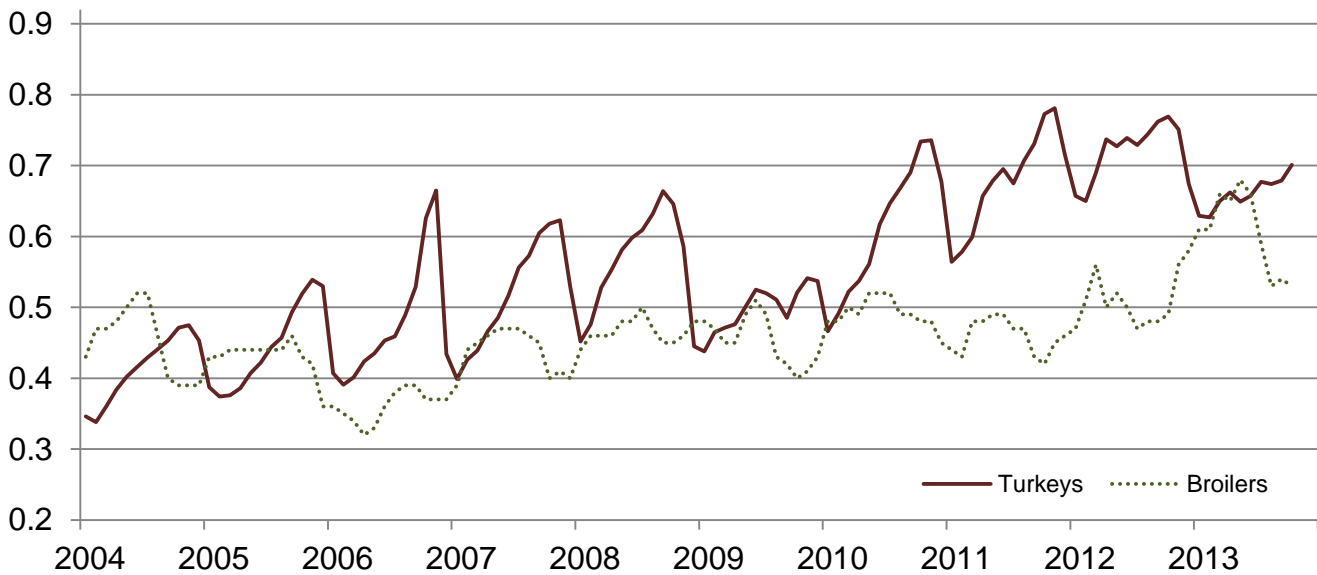
## Prices Received for Hogs by Month – United States

Dollars per cwt



## Prices Received for Poultry by Month – United States

Dollars per pound



## Prices Received for All Wheat, Corn, and Soybeans by Month – United States: 2013 with Comparisons

[Current month prices are mid-month; prices for previous months and years are for the entire month. Blank data cells indicate estimation period has not yet begun]

Month	All wheat			Corn			Soybeans		
	2011	2012	Preliminary 2013	2011	2012	Preliminary 2013	2011	2012	Preliminary 2013
	(dollars per bushel)	(dollars per bushel)	(dollars per bushel)	(dollars per bushel)	(dollars per bushel)	(dollars per bushel)	(dollars per bushel)	(dollars per bushel)	(dollars per bushel)
January .....	6.69	7.05	8.12	4.94	6.07	6.96	11.60	11.90	14.30
February .....	7.42	7.10	7.97	5.65	6.28	7.04	12.70	12.20	14.60
March .....	7.55	7.20	7.79	5.53	6.35	7.13	12.70	13.00	14.60
April .....	8.01	7.11	7.71	6.36	6.34	6.97	13.10	13.80	14.40
May .....	8.16	6.67	7.68	6.32	6.34	6.97	13.20	14.00	14.90
June .....	7.41	6.70	7.32	6.38	6.37	6.97	13.20	13.90	15.10
July .....	7.10	7.89	6.93	6.33	7.14	6.79	13.20	15.40	15.30
August .....	7.59	8.04	6.87	6.88	7.63	6.21	13.40	16.20	14.10
September .....	7.54	8.27	6.80	6.38	6.89	5.40	12.20	14.30	13.30
October .....	7.27	8.38	7.09	5.73	6.78	4.49	11.80	14.20	12.60
November .....	7.30	8.47		5.83	7.01		11.70	14.30	
December .....	7.20	8.30		5.86	6.87		11.50	14.30	

## Prices Received for Beef Cattle and All Hogs by Month – United States: 2013 with Comparisons

[Current month prices are mid-month; prices for previous months and years are for the entire month. Blank data cells indicate estimation period has not yet begun]

Month	Beef cattle <sup>1</sup>			All hogs <sup>2</sup>		
	2011	2012	Preliminary 2013	2011	2012	Preliminary 2013
	(dollars per cwt)	(dollars per cwt)	(dollars per cwt)	(dollars per cwt)	(dollars per cwt)	(dollars per cwt)
January .....	107.00	125.00	126.00	56.00	63.50	63.80
February .....	108.00	127.00	123.00	61.40	65.50	64.50
March .....	115.00	128.00	124.00	62.90	65.20	59.20
April .....	119.00	124.00	124.00	67.80	62.80	61.80
May .....	112.00	122.00	124.00	68.60	62.80	68.60
June .....	107.00	121.00	121.00	69.70	70.20	74.40
July .....	111.00	114.00	120.00	71.70	72.10	75.80
August .....	111.00	117.00	122.00	75.80	66.90	74.20
September .....	112.00	121.00	123.00	67.10	55.70	70.70
October .....	117.00	123.00	122.00	68.70	62.00	69.70
November .....	120.00	123.00		64.40	61.10	
December .....	120.00	124.00		63.50	62.40	

<sup>1</sup> Cows and steers & heifers.

<sup>2</sup> Barrows & gilts and sows.



## Prices Received for All Wheat – States and United States: October 2013 with Comparisons

State	October 2012	September 2013	Preliminary October 2013
	(dollars per bushel)	(dollars per bushel)	(dollars per bushel)
Arizona .....	(D)	(D)	(D)
Arkansas .....	(D)	(D)	(S)
California .....	(D)	(D)	(D)
Colorado .....	8.24	6.76	7.12
Idaho .....	8.27	7.03	6.99
Illinois .....	7.81	6.36	6.40
Indiana .....	8.97	6.25	6.25
Kansas .....	8.55	6.98	7.33
Michigan .....	8.29	6.53	6.65
Minnesota .....	8.63	6.66	7.00
Missouri .....	8.02	6.29	6.50
Montana .....	8.45	6.92	7.32
Nebraska .....	8.74	6.67	7.20
North Carolina .....	8.99	5.46	5.25
North Dakota .....	8.25	6.78	6.91
Ohio .....	8.17	6.19	6.60
Oklahoma .....	8.34	6.89	7.39
Oregon .....	7.99	6.79	7.25
South Dakota .....	8.41	6.60	6.97
Texas .....	8.62	7.14	(D)
Washington .....	8.35	6.76	7.05
United States .....	8.38	6.80	7.09

(D) Withheld to avoid disclosing data for individual operations.

(S) Insufficient number of reports to establish an estimate.

## Prices Received for Winter Wheat – States and United States: October 2013 with Comparisons

State	October 2012	September 2013	Preliminary October 2013
	(dollars per bushel)	(dollars per bushel)	(dollars per bushel)
Arkansas .....	(D)	(D)	(S)
California .....	(D)	(D)	(D)
Colorado .....	8.24	6.84	7.31
Idaho .....	8.23	6.95	6.75
Illinois .....	7.81	6.36	6.40
Indiana .....	8.97	6.25	6.25
Kansas .....	8.55	6.98	7.33
Michigan .....	8.29	6.53	6.65
Minnesota .....	(S)	6.61	(S)
Missouri .....	8.02	6.29	6.50
Montana .....	8.23	7.07	7.39
Nebraska .....	8.74	6.67	7.20
North Carolina .....	8.99	5.46	5.25
North Dakota .....	7.82	6.52	6.60
Ohio .....	8.17	6.19	6.60
Oklahoma .....	8.34	6.89	7.39
Oregon .....	7.99	6.72	7.21
South Dakota .....	8.28	6.43	6.85
Texas .....	8.62	7.14	(D)
Washington .....	8.24	6.71	6.94
United States .....	8.33	6.79	7.09

(D) Withheld to avoid disclosing data for individual operations.

(S) Insufficient number of reports to establish an estimate.

**Prices Received for Durum Wheat – States and United States: October 2013 with Comparisons**

State	October 2012	September 2013	Preliminary October 2013
	(dollars per bushel)	(dollars per bushel)	(dollars per bushel)
Arizona .....	(D)	(D)	(D)
California .....	(S)	(S)	(S)
Idaho .....	(D)	(D)	(S)
Montana .....	8.13	(D)	7.75
North Dakota .....	7.41	7.92	7.25
United States .....	7.61	7.90	7.33

(D) Withheld to avoid disclosing data for individual operations.

(S) Insufficient number of reports to establish an estimate.

**Prices Received for Spring Wheat – States and United States: October 2013 with Comparisons**

State	October 2012	September 2013	Preliminary October 2013
	(dollars per bushel)	(dollars per bushel)	(dollars per bushel)
Colorado .....	(D)	(D)	(D)
Idaho .....	8.39	7.20	7.25
Minnesota .....	8.63	6.66	7.00
Montana .....	8.68	6.77	7.22
North Dakota .....	8.50	6.63	6.85
Oregon .....	8.02	7.28	7.52
South Dakota .....	8.51	6.66	7.01
Washington .....	8.79	7.03	7.32
United States .....	8.56	6.71	7.06

(D) Withheld to avoid disclosing data for individual operations.

### Prices Received for All Barley – States and United States: October 2013 with Comparisons

State	October 2012	September 2013	Preliminary October 2013
	(dollars per bushel)	(dollars per bushel)	(dollars per bushel)
California .....	(D)	(D)	(S)
Colorado .....	6.74	6.26	(D)
Idaho .....	6.56	6.18	6.27
Minnesota .....	(D)	6.18	(S)
Montana .....	6.48	6.25	5.67
North Dakota .....	6.58	6.33	5.83
Oregon .....	6.36	4.22	(S)
Utah .....	5.80	(D)	(D)
Washington .....	5.40	4.42	3.46
Wyoming .....	(D)	(D)	(D)
United States .....	6.49	5.81	5.48

(D) Withheld to avoid disclosing data for individual operations.

(S) Insufficient number of reports to establish an estimate.

### Prices Received for Malting Barley – States: October 2013 with Comparisons

State	October 2012	September 2013	Preliminary October 2013
	(dollars per bushel)	(dollars per bushel)	(dollars per bushel)
Idaho .....	6.64	6.48	(D)
Minnesota .....	(D)	6.19	(S)
Montana .....	6.61	6.50	5.81
North Dakota .....	6.64	6.49	6.30
Wyoming .....	(D)	(D)	(D)

(D) Withheld to avoid disclosing data for individual operations.

(S) Insufficient number of reports to establish an estimate.

### Prices Received for Feed Barley – States: October 2013 with Comparisons

State	October 2012	September 2013	Preliminary October 2013
	(dollars per bushel)	(dollars per bushel)	(dollars per bushel)
Idaho .....	5.97	4.06	3.57
Minnesota .....	5.67	(D)	(S)
Montana .....	5.54	3.80	3.75
North Dakota .....	6.13	3.61	3.15
Wyoming .....	(D)	(D)	(D)

(D) Withheld to avoid disclosing data for individual operations.

(S) Insufficient number of reports to establish an estimate.

## Prices Received for Corn – States and United States: October 2013 with Comparisons

State	October 2012	September 2013	Preliminary October 2013
	(dollars per bushel)	(dollars per bushel)	(dollars per bushel)
Colorado .....	6.45	6.07	5.13
Illinois .....	6.84	5.25	4.60
Indiana .....	7.22	5.22	4.25
Iowa .....	6.82	5.66	4.50
Kansas .....	7.13	5.13	4.45
Kentucky .....	6.82	5.11	4.60
Michigan .....	6.81	5.37	4.20
Minnesota .....	6.56	5.69	4.50
Missouri .....	7.47	5.06	4.50
Nebraska .....	6.59	5.64	4.55
North Carolina .....	7.52	4.92	4.70
North Dakota .....	6.33	5.67	4.25
Ohio .....	7.06	5.47	4.45
Pennsylvania .....	7.37	5.15	4.40
South Dakota .....	6.61	5.46	4.30
Tennessee .....	7.36	5.07	4.60
Texas .....	7.11	5.46	5.01
Wisconsin .....	6.40	5.68	4.25
United States .....	6.78	5.40	4.49

## Prices Received for Soybeans – States and United States: October 2013 with Comparisons

State	October 2012	September 2013	Preliminary October 2013
	(dollars per bushel)	(dollars per bushel)	(dollars per bushel)
Arkansas .....	14.30	13.40	13.20
Illinois .....	14.40	13.50	12.90
Indiana .....	14.50	13.40	12.70
Iowa .....	14.10	13.90	12.60
Kansas .....	14.30	13.10	12.10
Kentucky .....	14.30	13.30	12.90
Louisiana .....	14.80	13.40	13.20
Michigan .....	14.00	13.00	12.30
Minnesota .....	14.10	13.30	12.60
Mississippi .....	13.90	13.20	13.20
Missouri .....	14.40	13.50	12.80
Nebraska .....	14.00	13.00	12.40
North Carolina .....	14.30	13.20	12.50
North Dakota .....	13.90	12.60	12.10
Ohio .....	14.30	13.00	12.70
South Dakota .....	13.80	12.80	12.20
Tennessee .....	14.50	13.00	12.60
Wisconsin .....	13.90	12.90	12.30
United States .....	14.20	13.30	12.60

### Prices Received for Oats – States and United States: October 2013 with Comparisons

State	October 2012	September 2013	Preliminary October 2013
	(dollars per bushel)	(dollars per bushel)	(dollars per bushel)
Illinois .....	(S)	(S)	(S)
Iowa .....	4.00	4.02	4.10
Michigan .....	4.05	3.24	3.25
Minnesota .....	3.57	3.43	3.50
Montana .....	(D)	(D)	(S)
Nebraska .....	(D)	4.04	3.75
New York .....	(D)	3.27	(D)
North Dakota .....	(D)	3.23	3.30
Oregon .....	(D)	(D)	(S)
Pennsylvania .....	4.01	(D)	(D)
South Dakota .....	4.30	3.45	3.54
Texas .....	(S)	(S)	(S)
Wisconsin .....	4.11	3.89	3.80
United States .....	3.93	3.57	3.51

(D) Withheld to avoid disclosing data for individual operations.

(S) Insufficient number of reports to establish an estimate.

### Prices Received for Sorghum Grain – States and United States: October 2013 with Comparisons

State	October 2012	September 2013	Preliminary October 2013
	(dollars per cwt)	(dollars per cwt)	(dollars per cwt)
Arkansas .....	10.10	(D)	(D)
Illinois .....	(D)	(D)	(S)
Kansas .....	12.20	8.70	7.34
Louisiana .....	10.90	8.84	(D)
Missouri .....	11.90	8.09	7.60
Nebraska .....	12.40	8.45	7.60
Oklahoma .....	12.00	7.77	7.30
Texas .....	12.70	7.88	7.26
United States .....	12.40	8.10	7.34

(D) Withheld to avoid disclosing data for individual operations.

(S) Insufficient number of reports to establish an estimate.

**Prices Received for Dry Beans – States and United States: October 2013 with Comparisons**

State	October 2012	September 2013	Preliminary October 2013
	(dollars per cwt)	(dollars per cwt)	(dollars per cwt)
California .....	51.70	43.00	(D)
Colorado .....	45.40	39.60	40.00
Idaho .....	32.80	34.10	31.00
Michigan .....	39.00	(D)	(D)
Minnesota .....	(D)	(S)	(S)
Nebraska .....	38.10	42.40	44.60
North Dakota .....	35.90	37.60	37.20
United States .....	37.70	39.10	39.00

(D) Withheld to avoid disclosing data for individual operations.

(S) Insufficient number of reports to establish an estimate.

**Prices Received for Peanuts (in shell) – States and United States: October 2013 with Comparisons**

State	October 2012	September 2013	Preliminary October 2013
	(dollars per pound)	(dollars per pound)	(dollars per pound)
Alabama .....	0.332	0.224	0.239
Florida .....	0.279	0.252	0.250
Georgia .....	0.340	0.239	0.242
Mississippi .....	0.357	0.272	0.246
New Mexico .....	0.375	(S)	0.346
North Carolina .....	0.361	0.322	0.280
Oklahoma .....	0.359	0.232	(S)
South Carolina .....	0.349	0.291	0.275
Texas .....	0.365	0.247	0.323
Virginia .....	0.306	0.298	0.269
United States .....	0.337	0.255	0.254

(S) Insufficient number of reports to establish an estimate.

### Prices Received for Sunflower – States and United States: October 2013 with Comparisons

State	October 2012	September 2013	Preliminary October 2013
	(dollars per cwt)	(dollars per cwt)	(dollars per cwt)
Colorado .....	(D)	(S)	(S)
Kansas .....	28.10	(D)	28.40
Minnesota .....	29.90	(D)	(S)
North Dakota .....	28.30	24.30	20.50
South Dakota .....	24.30	19.70	17.40
United States .....	25.90	22.60	19.30

(D) Withheld to avoid disclosing data for individual operations.

(S) Insufficient number of reports to establish an estimate.

### Prices Received for Canola – States and United States: October 2013 with Comparisons

State	October 2012	September 2013	Preliminary October 2013
	(dollars per cwt)	(dollars per cwt)	(dollars per cwt)
Minnesota .....	(D)	(D)	(S)
North Dakota .....	26.60	20.70	19.80
United States .....	26.60	20.70	19.80

(D) Withheld to avoid disclosing data for individual operations.

(S) Insufficient number of reports to establish an estimate.

### Prices Received for Flaxseed – States and United States: October 2013 with Comparisons

State	October 2012	September 2013	Preliminary October 2013
	(dollars per bushel)	(dollars per bushel)	(dollars per bushel)
North Dakota .....	13.50	13.10	13.20
United States .....	13.50	13.10	13.20

## Prices Received for Upland Cotton and Cottonseed – States and United States: October 2013 with Comparisons

[Cottonseed marketing year August - February]

State	Cotton, Upland			Cottonseed		
	October 2012	September 2013	Preliminary October 2013	October 2012	September 2013	Preliminary October 2013
	(dollars per pound)	(dollars per pound)	(dollars per pound)	(dollars per ton)	(dollars per ton)	(dollars per ton)
Alabama .....	0.682	(S)	(S)	189.00	(S)	196.00
Arizona .....	0.785	(D)	(S)	(D)	(S)	(D)
Arkansas .....	0.644	(D)	(S)	256.00	(S)	255.00
California .....	0.921	(D)	(S)	390.00	(S)	376.00
Georgia .....	0.797	(D)	0.813	223.00	(S)	198.00
Louisiana .....	0.677	(D)	(S)	266.00	272.00	245.00
Mississippi .....	0.661	(D)	(S)	265.00	(S)	235.00
North Carolina .....	0.757	(D)	(S)	232.00	(S)	236.00
Tennessee .....	0.791	(D)	(S)	255.00	(S)	(S)
Texas .....	0.674	0.748	0.772	257.00	185.00	353.00
United States .....	0.698	0.746	0.779	254.00	190.00	281.00

(D) Withheld to avoid disclosing data for individual operations.

(S) Insufficient number of reports to establish an estimate.

## Prices Received and Farm Marketings for Upland Cotton and Rice – United States: October 2013 with Comparisons

Item	October 2012	September 2013	Preliminary October 2013
<b>Cotton, Upland</b>			
Average price ..... dollars/pound	0.698	0.746	0.779
Marketings <sup>1</sup> ..... 1,000 bales	1,137	208	(NA)
<b>Rice, all</b>			
Average price ..... dollars/cwt	14.40	15.60	16.20
Marketings <sup>2</sup> ..... 1,000 cwt	14,110	11,218	(NA)
<b>Rice, long</b>			
Average price ..... dollars/cwt	13.90	15.30	15.60
Marketings <sup>2</sup> ..... 1,000 cwt	11,849	10,021	(NA)
<b>Rice, medium and short</b>			
Average price ..... dollars/cwt	16.80	18.10	18.80
Marketings <sup>2</sup> ..... 1,000 cwt	2,261	1,197	(NA)

(NA) Not available.

<sup>1</sup> Marketings based on a survey of cotton buyers in the major producing States - Alabama, Arizona, Arkansas, California, Georgia, Louisiana, Mississippi, North Carolina, Tennessee, and Texas.

<sup>2</sup> Purchases by private firms and rice (rough equivalent) shipped by cooperatives.



## Prices Received for Hay by Type – States and United States: October 2013 with Comparisons

State	All hay			Alfalfa hay			Other hay		
	October 2012	September 2013	Preliminary October 2013	October 2012	September 2013	Preliminary October 2013	October 2012	September 2013	Preliminary October 2013
	(dollars per ton)	(dollars per ton)	(dollars per ton)	(dollars per ton)	(dollars per ton)	(dollars per ton)	(dollars per ton)	(dollars per ton)	(dollars per ton)
Arizona .....	192.00	180.00	185.00	190.00	180.00	185.00	215.00	200.00	190.00
California .....	204.00	194.00	195.00	210.00	201.00	198.00	184.00	161.00	182.00
Colorado .....	233.00	234.00	237.00	235.00	235.00	238.00	210.00	230.00	229.00
Idaho .....	195.00	180.00	189.00	200.00	180.00	190.00	140.00	180.00	180.00
Illinois .....	156.00	161.00	155.00	170.00	175.00	180.00	120.00	125.00	125.00
Iowa .....	187.00	195.00	176.00	211.00	210.00	195.00	133.00	130.00	130.00
Kansas .....	199.00	193.00	171.00	230.00	225.00	198.00	125.00	119.00	109.00
Kentucky .....	107.00	120.00	119.00	195.00	195.00	195.00	90.00	95.00	100.00
Michigan .....	197.00	166.00	176.00	200.00	180.00	185.00	190.00	140.00	150.00
Minnesota .....	161.00	160.00	151.00	200.00	190.00	180.00	120.00	120.00	120.00
Missouri .....	127.00	123.00	124.00	220.00	235.00	220.00	110.00	105.00	90.00
Montana .....	144.00	139.00	129.00	147.00	140.00	130.00	127.00	130.00	125.00
Nebraska .....	207.00	168.00	154.00	230.00	181.00	166.00	150.00	136.00	126.00
Nevada .....	201.00	196.00	209.00	202.00	196.00	208.00	180.00	190.00	212.00
New Mexico .....	254.00	239.00	242.00	264.00	246.00	250.00	197.00	191.00	186.00
New York .....	140.00	152.00	153.00	191.00	205.00	208.00	112.00	137.00	137.00
North Dakota .....	129.00	113.00	105.00	141.00	118.00	108.00	87.00	76.00	68.00
Ohio .....	218.00	163.00	166.00	256.00	185.00	190.00	182.00	140.00	150.00
Oklahoma .....	131.00	128.00	139.00	230.00	190.00	199.00	119.00	95.00	82.00
Oregon .....	223.00	200.00	205.00	232.00	200.00	202.00	205.00	200.00	210.00
Pennsylvania .....	147.00	161.00	182.00	180.00	178.00	194.00	140.00	156.00	177.00
South Dakota .....	208.00	128.00	159.00	234.00	135.00	166.00	152.00	105.00	121.00
Texas .....	120.00	126.00	123.00	246.00	235.00	236.00	99.00	95.00	96.00
Utah .....	187.00	183.00	173.00	187.00	187.00	175.00	147.00	150.00	155.00
Washington .....	232.00	210.00	205.00	235.00	200.00	195.00	225.00	235.00	230.00
Wisconsin .....	164.00	182.00	180.00	180.00	200.00	200.00	115.00	120.00	120.00
Wyoming .....	212.00	190.00	185.00	215.00	195.00	190.00	200.00	175.00	170.00
United States .....	191.00	176.00	177.00	212.00	194.00	193.00	144.00	136.00	141.00

## Prices Received for Apples – States and United States: October 2013 with Comparisons

[Equivalent packinghouse-door returns for California, Michigan, New York, and Washington. Prices at point of first sale for other States]

State	Apples, fresh use		
	October 2012	September 2013	Preliminary October 2013
	(dollars per pound)	(dollars per pound)	(dollars per pound)
California .....	0.448	(NA)	(NA)
Michigan .....	0.650	(NA)	(NA)
New York .....	0.561	(NA)	(NA)
Ohio .....	0.770	(NA)	(NA)
Pennsylvania .....	0.624	(NA)	(NA)
Virginia .....	0.580	(NA)	(NA)
Washington .....	0.517	(NA)	(NA)
United States .....	0.535	(NA)	(NA)

(NA) Not available.

## Prices Received for Citrus Fruits by Utilization – States and United States: October 2012

[Net pounds per box: grapefruit in California-80, Florida-85, Texas-80; lemons-80; oranges in California-80, Florida-90, Texas-85; tangelos-90; tangerines and mandarins in Arizona and California-80, Florida-95]

Commodity, State, and type	FOB packed fresh	Equivalent returns					
		Packinghouse door			On-tree		
		All	Fresh	Process	All	Fresh	Process
	(dollars per box)	(dollars per box)	(dollars per box)	(dollars per box)	(dollars per box)	(dollars per box)	(dollars per box)
<b>Grapefruit</b>							
California <sup>1</sup> .....	17.80	11.27	11.27	(D)	9.13	9.13	(D)
Florida .....	29.60	14.94	18.86	2.60	12.48	16.62	-0.53
White .....	31.20	13.16	20.25	2.60	10.72	18.05	-0.20
Colored .....	29.40	15.29	18.65	2.60	12.83	16.40	-0.65
Texas .....	32.20	20.80	20.80	(NA)	19.22	19.22	(NA)
United States .....	29.00	14.91	18.50	2.60	12.49	16.28	-0.53
<b>Lemons</b>							
Arizona .....	(D)	(D)	(D)	(D)	(D)	(D)	(D)
California .....	34.10	21.72	25.02	(D)	16.00	19.12	(D)
United States .....	34.40	22.10	25.37	(D)	16.38	19.47	(D)
<b>Oranges</b>							
California .....	23.40	12.07	14.59	(D)	9.57	12.13	(D)
Valencia .....	23.40	12.07	14.59	(D)	9.57	12.13	(D)
Florida .....	(S)	(S)	(S)	(S)	(S)	(S)	(S)
Early and mids .....	(S)	(S)	(S)	(S)	(S)	(S)	(S)
United States .....	23.40	12.07	14.59	(D)	9.57	12.13	(D)
<b>Tangerines and mandarins</b>							
Florida .....	33.50	16.45	20.10	4.50	12.70	16.55	0.10
United States .....	33.50	16.45	20.10	4.50	12.70	16.55	0.10

(D) Withheld to avoid disclosing data for individual operations.

(NA) Not available.

(S) Insufficient number of reports to establish an estimate.

<sup>1</sup> Some processed sales included in fresh sales.

## Prices Received for Citrus Fruits by Utilization – States and United States: September 2013

[Net pounds per box: grapefruit in California-80, Florida-85, Texas-80; lemons-80; oranges in California-80, Florida-90, Texas-85; tangelos-90; tangerines and mandarins in Arizona and California-80, Florida-95]

Commodity, State, and type	FOB packed fresh	Equivalent returns					
		Packinghouse door			On-tree		
		All	Fresh	Process	All	Fresh	Process
	(dollars per box)	(dollars per box)	(dollars per box)	(dollars per box)	(dollars per box)	(dollars per box)	(dollars per box)
Grapefruit							
California <sup>1</sup> .....	17.60	10.94	10.94	(D)	8.76	8.76	(D)
United States .....	17.60	10.94	10.94	(D)	8.76	8.76	(D)
Lemons							
California .....	47.70	35.92	38.44	(D)	29.99	32.42	(D)
United States .....	47.70	35.92	38.44	(D)	29.99	32.42	(D)
Oranges							
California .....	26.30	14.93	17.31	(D)	12.39	14.80	(D)
Valencia .....	26.30	14.93	17.31	(D)	12.39	14.80	(D)
United States .....	26.30	14.93	17.31	(D)	12.39	14.80	(D)

(D) Withheld to avoid disclosing data for individual operations.

<sup>1</sup> Some processed sales included in fresh sales.

## Prices Received for Citrus Fruits by Utilization – States and United States: October 2013

[Net pounds per box: grapefruit in California-80, Florida-85, Texas-80; lemons-80; oranges in California-80, Florida-90, Texas-85; tangelos-90; tangerines and mandarins in Arizona and California-80, Florida-95]

Commodity, State, and type	FOB packed fresh	Equivalent returns					
		Packinghouse door			On-tree		
		All	Fresh	Process	All	Fresh	Process
	(dollars per box)	(dollars per box)	(dollars per box)	(dollars per box)	(dollars per box)	(dollars per box)	(dollars per box)
<b>Grapefruit</b>							
California <sup>1</sup> .....	(D)	(D)	(D)	(D)	(D)	(D)	(D)
Florida .....	(S)	(S)	(S)	(S)	(S)	(S)	(S)
White .....	(S)	(S)	(S)	(S)	(S)	(S)	(S)
Colored .....	(S)	(S)	(S)	(S)	(S)	(S)	(S)
United States .....	(D)	(D)	(D)	(D)	(D)	(D)	(D)
<b>Lemons</b>							
Arizona .....	(D)	(D)	(D)	(D)	(D)	(D)	(D)
California .....	50.00	39.03	40.74	(D)	33.07	34.72	(D)
United States .....	50.70	39.67	41.46	(D)	33.71	35.44	(D)
<b>Oranges</b>							
California .....	26.80	15.48	17.81	(D)	12.94	15.30	(D)
Valencia .....	26.80	15.48	17.81	(D)	12.94	15.30	(D)
Florida .....	(S)	(S)	(S)	(S)	(S)	(S)	(S)
Early and mids .....	(S)	(S)	(S)	(S)	(S)	(S)	(S)
United States .....	26.80	15.48	17.81	(D)	12.94	15.30	(D)
<b>Tangerines and mandarins</b>							
California .....	(D)	(D)	(D)	(D)	(D)	(D)	(D)
Florida .....	(S)	(S)	(S)	(S)	(S)	(S)	(S)
United States .....	(D)	(D)	(D)	(D)	(D)	(D)	(D)

(D) Withheld to avoid disclosing data for individual operations.

(S) Insufficient number of reports to establish an estimate.

<sup>1</sup> Some processed sales included in fresh sales.

## Prices Received for Potatoes – States and United States: October 2013 with Comparisons

State	October 2012	September 2013	Preliminary October 2013
	(dollars per cwt)	(dollars per cwt)	(dollars per cwt)
California			
Spring .....	(S)	(S)	(S)
Fall .....	6.75	(S)	(S)
All <sup>1</sup> .....	6.75	(S)	(S)
Colorado			
Fresh <sup>2</sup> .....	6.35	13.60	(D)
All <sup>1</sup> .....	5.85	12.60	(D)
Florida .....	(S)	(S)	(S)
Idaho			
Fresh <sup>2</sup> .....	4.60	8.80	(D)
Processing .....	7.30	7.50	(D)
All <sup>1</sup> .....	6.55	7.70	7.65
Maine .....	9.95	(D)	(D)
Michigan .....	10.10	9.85	9.70
Minnesota .....	6.10	11.40	(D)
New York .....	13.40	16.00	15.80
North Carolina .....	(S)	(S)	(S)
North Dakota			
Fresh <sup>2</sup> .....	8.10	(D)	(D)
Processing .....	8.15	(D)	(D)
All <sup>1</sup> .....	8.20	(D)	(D)
Oregon .....	6.85	8.45	8.00
Texas .....	(S)	(S)	(S)
Virginia .....	(S)	(S)	(S)
Washington			
Processing .....	6.50	6.30	(D)
All <sup>1</sup> .....	6.50	7.75	6.80
Wisconsin			
Fresh <sup>2</sup> .....	8.50	12.90	(D)
Processing .....	7.65	8.45	(D)
All <sup>1</sup> .....	8.00	11.00	(D)
United States			
Fresh <sup>2</sup> .....	6.71	12.72	(D)
Processing .....	7.13	7.55	(D)
All <sup>1</sup> .....	7.02	8.78	8.01

(D) Withheld to avoid disclosing data for individual operations.

(S) Insufficient number of reports to establish an estimate.

<sup>1</sup> Average price of potatoes sold for all uses, including table stock, processing, seed, and livestock feed.

<sup>2</sup> Fresh market prices only. Includes table stock prices.

## Prices Received for All Milk – States and United States: October 2013 with Comparisons

[Before deduction for hauling. Includes quality, quantity, and other premiums. Excludes hauling subsidies]

State	October 2012		September 2013		Preliminary October 2013	
	Price (dollars per cwt)	Fat test (percent)	Price (dollars per cwt)	Fat test (percent)	Price (dollars per cwt)	Fat test (percent)
Arizona .....	20.40	3.59	19.90	3.51	20.20	3.55
California .....	19.73	3.78	18.50	3.68	18.90	3.73
Colorado .....	21.20	3.62	20.30	3.49	20.40	3.55
Florida .....	24.20	3.72	24.20	3.62	24.30	3.70
Idaho .....	21.30	3.77	19.10	3.74	19.10	3.80
Illinois .....	22.80	3.90	20.90	3.68	21.00	3.82
Indiana .....	21.60	3.77	20.90	3.64	21.20	3.74
Iowa .....	22.50	3.88	20.40	3.70	20.50	3.82
Kansas .....	22.30	3.80	20.00	3.52	20.20	3.67
Michigan .....	21.60	3.75	20.60	3.62	20.90	3.70
Minnesota .....	23.50	3.92	20.10	3.78	20.20	3.89
Missouri .....	21.50	3.80	20.80	3.65	21.00	3.76
New Mexico .....	20.20	3.70	18.90	3.49	19.30	3.60
New York .....	21.90	3.80	21.40	3.73	21.70	3.83
Ohio .....	22.20	3.82	21.10	3.65	21.30	3.75
Oregon .....	23.50	3.87	21.30	3.82	21.50	3.91
Pennsylvania .....	22.80	3.79	21.70	3.68	22.00	3.75
Texas .....	21.50	3.89	20.50	3.76	20.60	3.85
Utah .....	21.00	3.79	19.50	3.71	19.70	3.77
Vermont .....	22.30	4.01	21.60	3.73	21.90	3.85
Virginia .....	23.20	3.81	23.40	3.63	23.80	3.76
Washington .....	21.20	3.87	20.60	3.82	21.00	3.91
Wisconsin .....	23.10	3.85	20.20	3.70	20.30	3.81
United States .....	21.60	3.80	20.10	3.68	20.30	3.77

## Prices Received for Milk Cows – States and United States: October 2013 with Comparisons

[Animals sold for dairy herd replacement only. Prices estimated in January, April, July, and October]

State	October 2012 (dollars per head)	July 2013 (dollars per head)	October 2013 (dollars per head)
Arizona .....	1,450	(NA)	1,500
California .....	1,300	(NA)	1,300
Colorado .....	1,430	(NA)	1,520
Florida .....	1,470	(NA)	1,550
Idaho .....	1,400	(NA)	1,300
Illinois .....	1,420	(NA)	1,420
Indiana .....	1,350	(NA)	1,450
Iowa .....	1,420	(NA)	1,380
Kansas .....	1,300	(NA)	1,350
Michigan .....	1,500	(NA)	1,600
Minnesota .....	1,350	(NA)	1,350
Missouri .....	1,100	(NA)	1,200
New Mexico .....	1,400	(NA)	1,440
New York .....	1,410	(NA)	1,410
Ohio .....	1,380	(NA)	1,400
Oregon .....	1,360	(NA)	1,300
Pennsylvania .....	1,430	(NA)	1,450
Texas .....	1,370	(NA)	1,450
Utah .....	1,240	(NA)	1,290
Vermont .....	1,550	(NA)	1,510
Virginia .....	1,470	(NA)	1,490
Washington .....	1,300	(NA)	1,300
Wisconsin .....	1,460	(NA)	1,490
United States .....	1,390	(NA)	1,400

(NA) Not available.

## Commodity Parity Prices and Price as Percent of Parity Price – United States: October 2013 with Comparisons

[Parity prices are computed under the provisions of Title III, Subtitle a, Section 301 (a) of the Agricultural Adjustment Act of 1938 as amended by the Agricultural Acts of 1948, 1949, and 1956. See January *Agricultural Prices* for details on adjusted base price and parity price computations. Parity data not available for blank cells. Primary source of data for livestock and milk prices is United States Department of Agriculture's Agricultural Marketing Service]

Commodity and unit	Adjusted base price	Parity price			Price as percent of parity			
		October 2012	September 2013	October 2013	October 2012	September 2013	October 2013	
	(dollars)	(dollars)	(dollars)	(dollars)	(percent)	(percent)	(percent)	
<b>Basic commodities</b>								
All wheat .....	bushel	0.636	18.60	18.00	18.40	45	38	39
Rice .....	cwt	1.65	42.70	46.70	47.80	34	33	34
Corn .....	bushel	0.434	12.10	12.30	12.60	56	44	36
<b>Cotton</b>								
Upland .....	pound	0.072	2.11	2.04	2.09	33	37	37
American Pima .....	pound	0.133	4.13	3.77	3.85	35	33	32
Peanuts .....	pound	0.027	0.761	0.764	0.782	44	33	32
<b>Designated nonbasic</b>								
All milk, to plants <sup>1</sup> .....	cwt	1.75	52.70	49.50	50.70	38	39	37
Honey, extracted <sup>2</sup> .....	pound	0.141	4.07	3.99	4.09	42	43	42
<b>Wool and mohair</b>								
Wool .....	pound	0.107	3.05	3.03	3.10	55	50	49
Mohair .....	pound	0.336	9.75	9.51	9.74	43	41	40
<b>Other nonbasic</b>								
Apples, fresh <sup>3</sup> .....	pound	0.032	0.966	0.906	0.927	55	55	46
Barley .....	bushel	0.444	12.80	12.60	12.90	51	46	42
Canola .....	cwt	1.880	53.30	53.20	54.50	50	39	36
Cottonseed .....	ton	17.80	509.00	504.00	516.00	50	38	54
Dry edible beans .....	cwt	3.01	88.10	85.20	87.20	43	46	45
Flaxseed .....	bushel	1.110	32.20	31.40	32.20	42	42	41
Oats .....	bushel	0.265	7.70	7.50	7.68	51	48	46
Potatoes .....	cwt	0.822	25.00	23.30	23.80	28	38	34
Sorghum grain .....	cwt	0.758	21.30	21.50	22.00	58	38	33
Soybeans .....	bushel	1.030	29.30	29.20	29.80	48	46	42
Sunflower, all .....	cwt	2.10	60.30	59.50	60.90	43	38	32
<b>Citrus (equivalent on-tree)</b>								
Grapefruit .....	box	0.697	20.20	19.70	20.20	62	44	39
Lemons .....	box	1.32	40.10	37.40	38.30	41	80	98
Oranges .....	box	0.711	20.40	20.10	20.60	47	62	63
Tangerines .....	box	1.49	43.60	42.20	43.20	29	139	129
<b>Livestock and poultry</b>								
Beef cattle .....	cwt	10.00	296.00	283.00	290.00	42	43	42
Calves .....	cwt	13.70	407.00	388.00	397.00	40	47	44
Hogs .....	cwt	5.48	162.00	155.00	159.00	38	46	44
Eggs <sup>1</sup> .....	dozen	0.089	2.66	2.52	2.58	38	42	40
Turkeys, live .....	pound	0.057	1.670	1.610	1.650	46	42	42

<sup>1</sup> Seasonally adjusted price as percentage of parity price.

<sup>2</sup> Wholesale extracted. Adjusted base price derived from state annual averages prices weighted by production. For 1982 through 1985 the national averages are the support prices.

<sup>3</sup> Equivalent packinghouse-door returns for California, New York, Oregon, and Washington. Price at point of first sale for other states.



## Commodity Parity Prices – United States: October 2013 with Comparisons

[Parity prices are computed under the provisions of Title III, Subtitle a, Section 301 (a) of the Agricultural Adjustment Act of 1938 as amended by the Agricultural Acts of 1948, 1949, and 1956. See January *Agricultural Prices* for details on adjusted base price and parity price computations]

Commodity and unit	Adjusted base price	Parity price			
		October 2012	September 2013	October 2013	
	(dollars)	(dollars)	(dollars)	(dollars)	
<b>Field crops and miscellaneous</b>					
Hops .....	pound	0.303	8.96	8.58	8.78
Mustard seed .....	cwt	2.85	82.60	80.70	82.60
Rapeseed .....	cwt	2.25	65.30	63.70	65.20
Rye .....	bushel	0.535	15.40	15.10	15.50
Safflower .....	cwt	2.04	59.10	57.80	59.10
Spearmint oil .....	pound	1.50	43.90	42.50	43.50
Sweet potatoes .....	cwt	2.08	64.70	58.90	60.30
<b>Tobacco</b>					
Flue-cured, 11-14 .....	pound	0.185	5.74	5.24	5.36
Fire-cured, 21-23 .....	pound	0.267	8.29	7.56	7.74
Burley, 31 .....	pound	0.188	5.91	5.32	5.45
Maryland, 32 .....	pound	0.167	5.09	4.73	4.84
Dark air-cured, 35-37 .....	pound	0.240	7.50	6.79	6.96
Pennsylvania seedleaf, 41 .....	pound	0.176	5.39	4.98	5.10
Cigar binder, 51 .....	pound	0.610	18.80	17.30	17.70
<b>Noncitrus fruit</b>					
Apples, processing <sup>1</sup> .....	ton	16.60	483.00	470.00	481.00
Apricots					
Fresh <sup>2</sup> .....	ton	111.00	3,600.00	3,140.00	3,220.00
Dried (California) .....	ton	252.00	7,580.00	7,130.00	7,300.00
Avocados <sup>2</sup> .....	ton	189.00	5,970.00	5,350.00	5,480.00
Cherries					
Sweet .....	ton	205.00	6,300.00	5,800.00	5,940.00
Tart .....	pound	0.033	0.996	0.934	0.956
Cranberry <sup>3</sup> .....	barrel	4.68	142.00	132.00	136.00
Dates (California) <sup>2</sup> .....	ton	161.00	5,180.00	4,560.00	4,670.00
<b>Grapes</b>					
Raisin variety .....	ton	133.00	3,660.00	3,770.00	3,850.00
Other dried .....	ton	61.70	1,640.00	1,750.00	1,790.00
Kiwifruit .....	ton	88.60	2,760.00	2,510.00	2,570.00
Nectarines, fresh (California) <sup>2</sup> .....	ton	54.60	1,580.00	1,550.00	1,580.00
Olives, canning (California) <sup>3</sup> .....	ton	87.70	2,620.00	2,480.00	2,540.00

See footnote(s) at end of table.

--continued

## Commodity Parity Prices – United States: October 2013 with Comparisons (continued)

[Parity prices are computed under the provisions of Title III, Subtitle a, Section 301 (a) of the Agricultural Adjustment Act of 1938 as amended by the Agricultural Acts of 1948, 1949, and 1956. See January *Agricultural Prices* for details on adjusted base price and parity price computations]

Commodity and unit	Adjusted base price	Parity price			
		October 2012	September 2013	October 2013	
	(dollars)	(dollars)	(dollars)	(dollars)	
Noncitrus fruit - continued					
Papayas (Hawaii) .....	pound	0.038	1.29	1.08	1.10
Peaches					
Fresh <sup>4</sup> .....	ton	80.20	2,400.00	2,270.00	2,320.00
Dried (California) .....	ton	48.50	1,570.00	1,370.00	1,410.00
Processing, excludes dried					
Clingstone (California) <sup>3</sup> .....	ton	31.60	975.00	895.00	916.00
Pears					
Fresh <sup>4</sup> .....	ton	54.70	1,630.00	1,550.00	1,590.00
Dried (California) <sup>1</sup> .....	ton	150.00	5,010.00	4,250.00	4,350.00
Plums (California)					
Fresh, equivalent on-tree .....	ton	58.10	1,720.00	1,640.00	1,680.00
Prunes, dried (California) <sup>1</sup> .....	ton	143.00	4,330.00	4,050.00	4,140.00
Prunes and plums					
Fresh, excludes California <sup>5</sup> .....	ton	61.90	1,830.00	1,750.00	1,790.00
Processing, excludes dried <sup>1</sup> .....	ton	23.80	738.00	674.00	690.00
Tree nuts <sup>6</sup>					
Almonds .....	pound	0.211	6.24	5.97	6.11
Hazelnuts .....	ton	191.00	5,740.00	5,410.00	5,540.00
Pistachios .....	pound	0.194	5.74	5.49	5.62
Walnuts .....	ton	185.00	5,240.00	5,240.00	5,360.00
Vegetables, fresh <sup>7</sup>					
Carrots <sup>8</sup> .....	cwt	2.57	78.80	72.80	74.50
Cauliflower <sup>8</sup> .....	cwt	4.04	126.00	114.00	117.00
Celery <sup>8</sup> .....	cwt	1.94	58.90	54.90	56.20
Honeydew melons .....	cwt	1.97	61.20	55.80	57.10
Lettuce .....	cwt	2.09	67.10	59.20	60.60
Onions <sup>8</sup> .....	cwt	1.41	43.60	39.90	40.90
Tomatoes .....	cwt	4.30	137.00	122.00	125.00

<sup>1</sup> Equivalent returns at processing plant door.

<sup>2</sup> Equivalent returns at packinghouse door.

<sup>3</sup> Equivalent returns for bulk fruit at first delivery point.

<sup>4</sup> Equivalent packinghouse-door returns for California, New York (apples only), Oregon (except peaches), and Washington. Price at point of first sale for other states.

<sup>5</sup> Based on "as sold" prices for fresh fruit in all states.

<sup>6</sup> Prices In-Shell basis except almonds which are shelled basis.

<sup>7</sup> FOB shipping point prices.

<sup>8</sup> Includes some processing.

## Marketing Year for Specified Commodities

**Cotton:** August 1 to July 31 for United States and all States.

**Cottonseed:** August 1 to February 28 for United States and all States.

### Cotton and Cottonseed Market Year Average Prices Received – States and United States: Marketing Years 2011 and 2012

State	Cotton				Cottonseed	
	Pima		Upland		2011	2012
	2011	2012	2011	2012		
	(dollars per lb)	(dollars per lb)	(dollars per lb)	(dollars per lb)	(dollars per ton)	(dollars per ton)
Alabama .....	(NA)	(NA)	0.923	0.726	204.00	200.00
Arizona .....	(D)	1.200	0.876	0.768	309.00	288.00
Arkansas .....	(NA)	(NA)	0.947	0.715	267.00	253.00
California .....	1.450	1.240	1.040	0.892	341.00	366.00
Florida .....	(NA)	(NA)	0.978	0.763	218.00	211.00
Georgia .....	(NA)	(NA)	0.944	0.768	207.00	212.00
Kansas .....	(NA)	(NA)	0.820	0.707	208.00	(D)
Louisiana .....	(NA)	(NA)	0.930	0.693	255.00	259.00
Mississippi .....	(NA)	(NA)	0.977	0.761	249.00	266.00
Missouri .....	(NA)	(NA)	0.856	0.731	260.00	280.00
New Mexico .....	(D)	1.400	0.874	0.717	402.00	302.00
North Carolina .....	(NA)	(NA)	0.899	0.729	203.00	229.00
Oklahoma .....	(NA)	(NA)	0.819	0.711	308.00	249.00
South Carolina .....	(NA)	(NA)	0.920	0.757	199.00	206.00
Tennessee .....	(NA)	(NA)	0.937	0.738	260.00	256.00
Texas .....	1.400	1.290	0.819	0.698	289.00	265.00
Virginia .....	(NA)	(NA)	0.890	0.735	230.00	(D)
United States .....	1.450	1.238	0.883	0.725	260.00	252.00

(D) Withheld to avoid disclosing data for individual operations.

(NA) Not available.

**Prices Received for Upland Cotton by Month – States and United States: Marketing Years 2011-2012 and 2012-2013**

State	2011-2012					
	August	September	October	November	December	January <sup>1</sup>
	(dollars per pound)	(dollars per pound)	(dollars per pound)	(dollars per pound)	(dollars per pound)	(dollars per pound)
Alabama .....	(S) 0.940	0.864	0.953	0.960	0.855	0.906
Arizona .....	(S) 0.670	(D) 0.894	0.894	0.937	0.941	0.914
Arkansas .....	(S) 0.715	(D) 0.940	0.940	0.928	0.939	0.966
California .....	(S) 0.747	(S) 1.090	1.090	1.190	1.180	0.963
Georgia .....	(D) 0.818	(D) 0.943	0.943	0.955	0.945	0.930
Louisiana .....	(D) 0.747	0.934	0.924	0.923	0.886	0.925
Mississippi .....	(D) 0.711	(D) 0.901	0.901	0.976	0.948	0.952
North Carolina .....	(D) 0.757	0.941	0.893	0.902	0.889	0.897
Tennessee .....	(D) 0.742	(D) 0.924	0.924	0.939	0.913	0.901
Texas .....	0.715	0.939	0.925	0.890	0.830	0.862
United States .....	0.714	0.935	0.922	0.926	0.889	0.901
State	2012-2013					
	August	September	October	November	December	January <sup>1</sup>
	(dollars per pound)	(dollars per pound)	(dollars per pound)	(dollars per pound)	(dollars per pound)	(dollars per pound)
Alabama .....	(D) 0.749	(D) 0.682	0.682	0.676	0.674	0.749
Arizona .....	0.670	(D) 0.785	0.785	0.782	0.803	(D) 0.749
Arkansas .....	(D) 0.694	(D) 0.644	0.644	0.692	0.730	0.694
California .....	(S) 0.930	(S) 0.921	0.921	(D) 0.930	0.930	(D) 0.749
Georgia .....	(D) 0.753	0.818	0.797	0.749	0.739	0.753
Louisiana .....	0.747	0.691	0.677	0.646	0.684	0.730
Mississippi .....	(D) 0.739	(D) 0.661	0.661	0.711	0.727	0.739
North Carolina .....	(D) 0.729	(D) 0.757	0.757	0.718	0.712	0.729
Tennessee .....	(D) 0.709	(D) 0.791	0.791	0.742	0.694	0.709
Texas .....	0.715	0.708	0.674	0.672	0.713	0.705
United States .....	0.714	0.709	0.698	0.692	0.718	0.729

See footnote(s) at end of table.

--continued

**Prices Received for Upland Cotton by Month – States and United States: Marketing Years 2011-2012 and 2012-2013 (continued)**

State	2011-2012					
	February	March	April	May	June	July
	(dollars per pound)	(dollars per pound)	(dollars per pound)	(dollars per pound)	(dollars per pound)	(dollars per pound)
Alabama .....	0.944	0.954	(D)	1.010	1.010	1.020
Arizona .....	0.886	(D)	(D)	(D)	(D)	(D)
Arkansas .....	0.985	0.922	(D)	1.010	(D)	1.020
California .....	(D)	(D)	(D)	(D)	(D)	(D)
Georgia .....	0.927	0.930	0.962	0.973	0.972	1.010
Louisiana .....	0.992	0.929	0.919	1.010	(D)	1.020
Mississippi .....	0.985	0.970	(D)	1.010	1.010	1.020
North Carolina .....	0.906	0.916	0.975	1.010	1.010	1.020
Tennessee .....	0.964	0.943	0.905	(D)	1.010	(D)
Texas .....	0.831	0.831	0.792	0.777	0.704	0.705
United States .....	0.923	0.900	0.904	0.844	0.771	0.766
State	2012-2013					
	February	March	April	May	June	July
	(dollars per pound)	(dollars per pound)	(dollars per pound)	(dollars per pound)	(dollars per pound)	(dollars per pound)
Alabama .....	0.799	0.797	0.791	0.802	0.806	0.813
Arizona .....	0.746	(D)	(D)	(D)	(D)	(D)
Arkansas .....	0.764	(D)	(D)	0.800	0.796	0.814
California .....	0.898	(D)	(D)	(D)	(D)	(D)
Georgia .....	0.775	0.808	0.798	0.802	0.812	0.812
Louisiana .....	0.768	(D)	0.767	(D)	0.805	0.814
Mississippi .....	0.773	(D)	(D)	(D)	0.806	0.813
North Carolina .....	0.764	(D)	0.797	0.801	0.806	0.814
Tennessee .....	0.756	0.786	0.794	0.791	0.808	0.814
Texas .....	0.727	0.721	0.684	(D)	0.688	0.680
United States .....	0.769	0.775	0.784	0.783	0.793	0.809

(D) Withheld to avoid disclosing data for individual operations.

(S) Insufficient number of reports to establish an estimate.

<sup>1</sup> Second year.

## Prices Received for Cottonseed by Month – States and United States: Marketing Year 2012-2013

[Monthly prices available only for major cotton producing States]

State	August	September	October	November	December	January <sup>1</sup>	February
	(dollars per ton)	(dollars per ton)	(dollars per ton)	(dollars per ton)	(dollars per ton)	(dollars per ton)	(dollars per ton)
Alabama .....	(NA)	(S)	189.00	198.00	206.00	195.00	205.00
Arizona .....	(S)	360.00	(D)	269.00	280.00	314.00	(S)
Arkansas .....	(NA)	275.00	256.00	246.00	(S)	(S)	(S)
California .....	(NA)	(S)	390.00	365.00	369.00	352.00	(S)
Georgia .....	(NA)	219.00	223.00	213.00	210.00	212.00	209.00
Louisiana .....	(NA)	222.00	266.00	(S)	(S)	(S)	(S)
Mississippi .....	(NA)	(S)	265.00	267.00	(S)	(S)	(S)
North Carolina .....	(NA)	(S)	232.00	233.00	222.00	217.00	222.00
Tennessee .....	(NA)	(S)	255.00	258.00	260.00	(S)	(S)
Texas .....	235.00	252.00	257.00	268.00	269.00	268.00	271.00
United States .....	235.00	254.00	254.00	255.00	252.00	249.00	217.00

(D) Withheld to avoid disclosing data for individual operations.

(NA) Not available.

(S) Insufficient number of reports to establish an estimate.

<sup>1</sup> Second year.

## Percent of Upland Cotton Farm Marketings by Month – States and United States: Marketing Years 2011-2012 and 2012-2013

[Monthly farm marketings, based on a sample survey, as a percent of total used for calculating marketing year average prices]

State and marketing year	August	September	October	November	December	January	February	March	April	May	June	July
	(percent)	(percent)	(percent)	(percent)	(percent)	(percent)	(percent)	(percent)	(percent)	(percent)	(percent)	(percent)
Alabama												
2011-2012 ...	0.2	0.8	9.2	17.0	29.3	16.2	8.8	6.8	2.3	3.6	2.3	3.7
2012-2013 ...	0.2	-	10.7	18.9	23.5	17.0	11.3	4.5	4.2	2.7	2.0	5.0
Arizona												
2011-2012 ...	-	0.4	5.4	12.6	22.3	18.8	13.4	9.1	5.4	5.9	3.5	3.2
2012-2013 ...	1.2	1.1	10.4	16.4	19.0	20.1	11.2	4.4	4.4	4.0	4.0	3.8
Arkansas												
2011-2012 ...	-	1.3	14.2	35.3	11.6	4.5	12.0	9.4	2.6	4.2	2.7	2.2
2012-2013 ...	-	-	24.3	13.9	5.9	23.6	7.4	4.7	5.7	3.9	3.1	7.5
California												
2011-2012 ...	-	-	10.2	14.4	28.3	5.8	6.3	18.3	4.2	6.5	3.0	3.0
2012-2013 ...	-	-	2.8	6.6	10.5	23.0	23.4	6.4	7.6	7.0	6.3	6.4
Georgia												
2011-2012 ...	-	0.1	6.1	10.7	16.8	21.9	14.6	12.6	4.2	5.3	3.5	4.2
2012-2013 ...	0.1	0.1	4.4	14.7	21.9	19.1	13.4	7.1	5.4	3.5	3.0	7.3
Louisiana												
2011-2012 ...	-	6.7	40.7	18.7	8.8	5.9	4.5	5.6	2.9	2.7	1.8	1.7
2012-2013 ...	0.3	2.2	38.8	24.6	11.1	5.0	3.9	2.5	4.2	2.0	1.5	3.9
Mississippi												
2011-2012 ...	-	0.1	6.9	12.3	11.4	10.1	14.4	13.7	5.3	8.4	5.5	11.9
2012-2013 ...	0.1	-	4.7	13.7	12.5	13.7	11.1	9.0	10.2	6.8	5.0	13.2
North Carolina												
2011-2012 ...	-	2.0	23.0	24.0	26.7	18.3	2.0	1.7	0.4	0.5	0.3	1.1
2012-2013 ...	0.2	0.1	9.6	33.2	32.9	13.1	3.2	1.6	1.8	1.1	0.8	2.4
Tennessee												
2011-2012 ...	-	0.2	15.4	24.4	13.6	10.8	8.8	8.1	5.8	4.9	2.8	5.2
2012-2013 ...	0.3	-	7.1	11.4	24.7	26.3	7.0	9.9	3.3	3.1	2.4	4.5
Texas												
2011-2012 ...	9.6	6.7	4.6	8.8	14.1	10.1	2.9	3.5	1.1	9.2	10.0	19.4
2012-2013 ...	5.3	7.0	7.1	28.1	34.2	11.7	3.0	2.0	0.4	0.5	0.5	0.2
United States												
2011-2012 ...	4.2	3.6	9.5	14.1	16.4	12.7	7.1	6.7	2.5	6.5	6.0	10.7
2012-2013 ...	2.5	3.3	9.1	22.2	26.5	15.1	6.8	4.1	3.0	2.1	1.8	3.5

- Represents zero.

## Upland Cotton Monthly Marketings – Marketing Years 2011-2012 and 2012-2013

[Marketings based on a survey of cotton buyers in the major producing States - Alabama, Arizona, Arkansas, California, Georgia, Louisiana, Mississippi, North Carolina, Tennessee, and Texas. Total may not add due to rounding]

Month	Upland Cotton	
	2011-2012 (1,000 bales)	2012-2013 (1,000 bales)
August .....	506	316
September .....	432	416
October .....	1,155	1,137
November .....	1,706	2,769
December .....	1,990	3,278
January <sup>1</sup> .....	1,541	1,885
February .....	857	848
March .....	808	516
April .....	300	368
May .....	793	266
June .....	725	219
July .....	1,300	437
Year .....	12,113	12,455

<sup>1</sup> Second year.



**Prices Received Indexes as a Percent of 1990-1992 Base, Monthly and Annual Average – United States: 2009-2013**

[Revised historical price indexes for months not shown are available at [www.nass.usda.gov](http://www.nass.usda.gov). Blank data cells indicate estimation period has not begun]

Year	All products												
	January	February	March	April	May	June	July	August	September	October	November	December	Average <sup>1</sup>
2009 ...	139	126	126	129	130	134	131	126	126	134	136	136	131
2010 ...	136	132	137	135	138	135	138	141	143	151	154	153	141
2011 ...	166	170	173	176	175	180	183	184	179	185	184	179	178
2012 ...	189	181	184	179	180	183	191	194	195	210	207	199	191
2013 ...	217	199	201	192	196	200	200	189	186	187			197
Year	All crops												
	January	February	March	April	May	June	July	August	September	October	November	December	Average <sup>1</sup>
2009 ...	161	146	147	151	150	159	150	146	143	152	154	150	151
2010 ...	149	145	150	146	148	144	147	151	152	163	171	171	153
2011 ...	189	200	198	202	204	210	212	211	204	204	206	199	203
2012 ...	213	207	211	210	214	214	231	234	227	238	238	226	222
2013 ...	250	234	238	222	224	233	230	214	206	203			225
Year	Food grains												
	January	February	March	April	May	June	July	August	September	October	November	December	Average <sup>1</sup>
2009 ...	220	205	201	200	200	194	177	170	161	163	172	173	186
2010 ...	177	175	173	166	158	145	154	181	189	190	199	214	177
2011 ...	220	232	233	244	253	243	236	248	246	238	239	238	239
2012 ...	233	227	229	229	219	224	262	263	266	265	266	267	246
2013 ...	259	252	248	247	247	244	233	231	228	237			243
Year	Feed grains & hay												
	January	February	March	April	May	June	July	August	September	October	November	December	Average <sup>1</sup>
2009 ...	188	169	169	168	172	169	154	148	143	155	157	155	162
2010 ...	158	153	153	148	152	148	151	157	173	185	194	202	165
2011 ...	209	232	230	263	266	263	265	283	271	250	252	252	253
2012 ...	261	268	271	273	272	268	292	312	292	293	301	294	283
2013 ...	300	301	305	299	299	296	286	264	235	199			278
Year	Cotton												
	January	February	March	April	May	June	July	August	September	October	November	December	Average <sup>1</sup>
2009 ...	76	68	67	74	74	74	72	82	88	97	98	105	81
2010 ...	100	107	107	110	110	113	113	125	123	128	134	134	117
2011 ...	135	153	139	143	137	137	136	155	154	152	153	147	145
2012 ...	149	152	149	149	139	127	126	118	117	115	114	118	131
2013 ...	120	127	128	129	129	131	133	127	123	129			128
Year	Tobacco												
	January	February	March	April	May	June	July	August	September	October	November	December	Average <sup>1</sup>
2009 ...	104	104	104	104	104	104	104	104	104	104	104	103	104
2010 ...	103	103	103	103	103	103	103	103	103	103	103	99	103
2011 ...	99	99	99	99	99	99	99	99	99	99	99	103	83
2012 ...	103	103	103	103	103	103	103	103	103	103	103	116	104
2013 ...	116	116	116	116	116	116	116	116	116	116			116
Year	Oilseeds												
	January	February	March	April	May	June	July	August	September	October	November	December	Average <sup>1</sup>
2009 ...	179	172	164	175	191	203	192	192	158	161	165	172	177
2010 ...	173	168	167	169	168	168	174	178	149	167	186	199	172
2011 ...	207	228	228	235	237	237	237	239	202	207	215	212	224
2012 ...	214	220	233	247	250	249	275	287	240	246	252	254	247
2013 ...	253	255	254	250	256	260	263	237	232	225			249
Year	Fruits & nuts												
	January	February	March	April	May	June	July	August	September	October	November	December	Average <sup>1</sup>
2009 ...	121	122	123	123	135	146	148	146	158	162	156	140	140
2010 ...	135	143	144	131	142	142	147	152	154	161	171	149	148
2011 ...	152	141	148	153	158	167	184	186	181	182	178	168	167
2012 ...	166	163	171	174	213	191	185	194	215	224	215	189	192
2013 ...	177	180	178	161	169	190	188	192	207	212			185

See footnote(s) at end of table.

--continued

**Prices Received Indexes as a Percent of 1990-1992 Base, Monthly and Annual Average – United States: 2009-2013 (continued)**

[Revised historical price indexes for months not shown are available at [www.nass.usda.gov](http://www.nass.usda.gov). Blank data cells indicate estimation period has not begun]

Year	Commercial vegetables												
	January	February	March	April	May	June	July	August	September	October	November	December	Average <sup>1</sup>
2009 ...	173	139	151	176	141	155	135	140	135	167	216	208	161
2010 ...	148	147	210	190	172	152	150	151	149	142	183	155	162
2011 ...	197	276	220	165	175	167	161	136	138	124	159	136	171
2012 ...	118	113	123	140	158	162	153	156	172	151	167	135	146
2013 ...	264	212	230	167	166	165	178	192	168	206			195
Year	Potatoes & dry beans												
	January	February	March	April	May	June	July	August	September	October	November	December	Average <sup>1</sup>
2009 ...	164	156	162	163	160	162	152	149	142	128	130	135	150
2010 ...	135	137	138	146	152	141	141	137	127	123	138	163	140
2011 ...	150	156	181	184	182	186	213	174	154	145	160	168	171
2012 ...	171	171	185	203	188	176	176	163	142	136	144	147	167
2013 ...	150	149	157	167	219	213	231	194	165	152			180
Year	Other crops												
	January	February	March	April	May	June	July	August	September	October	November	December	Average <sup>1</sup>
2009 ...	123	123	123	123	123	123	123	123	124	125	125	125	124
2010 ...	125	125	125	125	125	125	125	125	127	130	130	130	126
2011 ...	131	131	131	131	131	131	131	131	131	132	132	132	131
2012 ...	132	132	132	132	132	132	133	133	131	131	131	131	132
2013 ...	131	131	131	131	131	131	131	131	131	131			131
Year	Food commodities												
	January	February	March	April	May	June	July	August	September	October	November	December	Average <sup>1</sup>
2009 ...	134	122	122	127	126	131	129	125	126	133	136	137	129
2010 ...	134	131	137	135	138	135	139	142	141	146	149	148	140
2011 ...	158	163	168	167	166	171	174	173	167	174	173	169	169
2012 ...	172	167	172	166	169	172	178	179	182	196	191	186	178
2013 ...	197	183	184	178	182	186	188	181	181	189			185
Year	Livestock and products												
	January	February	March	April	May	June	July	August	September	October	November	December	Average <sup>1</sup>
2009 ...	115	109	109	112	113	111	112	109	108	110	115	120	112
2010 ...	121	122	127	128	131	129	132	134	134	134	134	133	130
2011 ...	137	143	152	155	151	152	155	158	151	153	157	156	152
2012 ...	155	156	159	152	151	152	149	154	156	162	167	165	157
2013 ...	166	162	164	164	170	167	164	163	163	163			165
Year	Meat animals												
	January	February	March	April	May	June	July	August	September	October	November	December	Average <sup>1</sup>
2009 ...	106	105	105	110	110	106	107	104	103	103	104	105	106
2010 ...	110	113	120	128	130	124	125	128	128	124	122	127	123
2011 ...	140	143	151	158	151	146	152	153	149	156	158	156	151
2012 ...	163	166	166	162	159	162	155	156	154	161	160	160	160
2013 ...	163	161	158	160	163	163	163	165	165	164			163
Year	Dairy products												
	January	February	March	April	May	June	July	August	September	October	November	December	Average <sup>1</sup>
2009 ...	102	89	90	91	89	87	87	93	100	109	118	126	98
2010 ...	123	121	113	112	115	118	122	128	136	142	137	128	125
2011 ...	128	146	156	150	150	162	167	169	162	153	157	151	154
2012 ...	145	135	132	129	124	125	129	139	151	165	169	159	142
2013 ...	152	149	146	149	151	149	145	149	154	155			150
Year	Poultry & eggs												
	January	February	March	April	May	June	July	August	September	October	November	December	Average <sup>1</sup>
2009 ...	149	141	137	140	142	147	145	133	129	127	137	142	139
2010 ...	150	147	161	146	150	151	155	151	147	152	163	152	152
2011 ...	139	140	148	156	153	155	150	158	145	147	154	160	150
2012 ...	149	157	172	157	161	159	154	161	166	162	181	181	163
2013 ...	184	180	197	187	203	192	181	169	170	168			183

<sup>1</sup> Simple average required for parity regulations. Weighted 1990-1992 average equals 100. Average is year-to-date for current year.

## Prices Received Indexes as a Percent of 1910-1914 Base, Monthly and Annual Average – United States: 2009-2013

[Revised historical price indexes for months not shown are available at [www.nass.usda.gov](http://www.nass.usda.gov). Blank data cells indicate estimation period has not begun]

Year	All products												
	January	February	March	April	May	June	July	August	September	October	November	December	Average <sup>1</sup>
2009 ...	882	799	800	820	823	848	829	801	802	852	862	863	832
2010 ...	862	840	870	857	875	859	879	896	906	955	976	968	895
2011 ...	1054	1081	1100	1117	1113	1143	1163	1167	1137	1171	1169	1138	1129
2012 ...	1197	1148	1168	1133	1145	1158	1212	1228	1236	1332	1316	1261	1211
2013 ...	1377	1261	1274	1217	1242	1269	1269	1201	1180	1189			1248
Year	All crops												
	January	February	March	April	May	June	July	August	September	October	November	December	Average <sup>1</sup>
2009 ...	797	725	730	747	743	789	746	724	707	753	764	744	747
2010 ...	738	719	745	723	732	713	728	749	752	808	849	845	758
2011 ...	937	993	983	999	1012	1042	1049	1048	1009	1013	1022	988	1008
2012 ...	1056	1023	1047	1039	1060	1063	1147	1160	1125	1182	1178	1118	1100
2013 ...	1237	1162	1181	1102	1110	1153	1139	1062	1021	1004			1117
Year	Food grains												
	January	February	March	April	May	June	July	August	September	October	November	December	Average <sup>1</sup>
2009 ...	698	649	638	633	633	616	559	537	509	516	547	548	590
2010 ...	559	556	547	525	502	459	487	575	598	603	630	677	560
2011 ...	696	735	739	774	801	771	747	787	780	754	758	753	758
2012 ...	737	720	727	725	694	710	830	834	844	839	842	846	779
2013 ...	821	800	786	784	782	774	738	733	723	751			769
Year	Feed grains & hay												
	January	February	March	April	May	June	July	August	September	October	November	December	Average <sup>1</sup>
2009 ...	671	604	602	599	612	604	551	527	511	553	560	552	579
2010 ...	564	544	546	527	540	529	539	559	617	660	692	721	587
2011 ...	745	828	820	938	948	938	944	1008	965	892	900	900	902
2012 ...	932	955	968	972	971	955	1043	1114	1041	1045	1075	1048	1010
2013 ...	1069	1073	1089	1066	1066	1056	1021	941	837	710			993
Year	Cotton												
	January	February	March	April	May	June	July	August	September	October	November	December	Average <sup>1</sup>
2009 ...	389	349	342	378	380	381	369	419	450	495	504	537	416
2010 ...	515	550	550	565	564	580	580	640	633	654	690	687	601
2011 ...	695	786	714	734	704	705	698	796	791	780	784	752	745
2012 ...	763	781	762	765	714	653	648	604	600	591	586	608	673
2013 ...	617	651	656	664	663	671	685	651	631	659			655
Year	Tobacco												
	January	February	March	April	May	June	July	August	September	October	November	December	Average <sup>1</sup>
2009 ...	1569	1569	1569	1569	1569	1569	1569	1569	1569	1569	1569	1563	1569
2010 ...	1563	1563	1563	1563	1563	1563	1563	1563	1563	1563	1563	1491	1557
2011 ...	1491	1491	1491	1491	1491	1491	1491	1491	1491	1491	1491	1559	1497
2012 ...	1559	1559	1559	1559	1559	1559	1559	1559	1559	1559	1559	1760	1576
2013 ...	1760	1760	1760	1760	1760	1760	1760	1760	1760	1760			1760
Year	Oilseeds												
	January	February	March	April	May	June	July	August	September	October	November	December	Average <sup>1</sup>
2009 ...	981	945	899	960	1048	1113	1055	1055	867	884	905	942	971
2010 ...	951	920	918	925	919	923	956	976	816	917	1017	1092	944
2011 ...	1132	1248	1250	1288	1296	1301	1299	1311	1105	1133	1178	1164	1225
2012 ...	1173	1208	1279	1354	1371	1364	1506	1574	1314	1350	1383	1394	1356
2013 ...	1389	1396	1390	1370	1404	1427	1442	1300	1273	1233			1362
Year	Fruits & nuts												
	January	February	March	April	May	June	July	August	September	October	November	December	Average <sup>1</sup>
2009 ...	846	851	859	856	939	1017	1034	1018	1101	1133	1092	979	977
2010 ...	939	1000	1003	915	994	992	1029	1059	1075	1122	1197	1040	1030
2011 ...	1059	988	1033	1069	1101	1166	1284	1298	1264	1273	1239	1172	1162
2012 ...	1161	1139	1196	1215	1490	1335	1293	1352	1502	1563	1503	1320	1339
2013 ...	1234	1259	1241	1124	1182	1328	1312	1338	1447	1479			1294

See footnote(s) at end of table.

--continued

**Prices Received Indexes as a Percent of 1910-1914 Base, Monthly and Annual Average – United States: 2009-2013 (continued)**

[Revised historical price indexes for months not shown are available at [www.nass.usda.gov](http://www.nass.usda.gov). Blank data cells indicate estimation period has not begun]

Year	Commercial vegetables												
	January	February	March	April	May	June	July	August	September	October	November	December	Average <sup>1</sup>
2009 ...	1239	992	1077	1256	1010	1106	967	1001	963	1196	1544	1489	1153
2010 ...	1060	1054	1501	1357	1226	1087	1069	1079	1061	1018	1311	1106	1161
2011 ...	1405	1973	1573	1181	1247	1193	1152	972	989	888	1134	975	1224
2012 ...	841	804	879	999	1128	1158	1094	1118	1226	1077	1196	965	1040
2013 ...	1888	1516	1643	1193	1187	1176	1275	1373	1201	1471			1392
Year	Potatoes & dry beans												
	January	February	March	April	May	June	July	August	September	October	November	December	Average <sup>1</sup>
2009 ...	831	791	819	824	812	821	769	756	718	647	661	682	761
2010 ...	683	696	697	738	768	712	713	694	643	624	699	828	708
2011 ...	761	792	917	931	923	942	1078	881	781	734	813	853	867
2012 ...	868	868	938	1031	953	894	892	825	722	687	731	743	846
2013 ...	762	756	797	848	1108	1080	1168	985	835	771			911
Year	Other crops												
	January	February	March	April	May	June	July	August	September	October	November	December	Average <sup>1</sup>
2009 ...	607	607	607	607	607	607	607	607	610	614	614	614	609
2010 ...	614	614	614	614	614	614	614	614	627	640	640	640	622
2011 ...	643	643	643	643	643	643	643	643	646	649	649	649	645
2012 ...	651	651	651	651	651	651	652	652	647	643	643	643	649
2013 ...	645	645	645	645	645	645	645	645	645	645			645
Year	Livestock and products												
	January	February	March	April	May	June	July	August	September	October	November	December	Average <sup>1</sup>
2009 ...	878	836	832	861	863	854	859	833	831	843	882	917	857
2010 ...	930	937	974	978	1004	987	1008	1024	1028	1024	1030	1022	996
2011 ...	1048	1099	1162	1191	1158	1169	1186	1211	1159	1176	1204	1196	1163
2012 ...	1190	1199	1219	1165	1155	1163	1141	1180	1196	1242	1283	1268	1200
2013 ...	1269	1245	1259	1254	1306	1280	1254	1246	1253	1252			1262
Year	Meat animals												
	January	February	March	April	May	June	July	August	September	October	November	December	Average <sup>1</sup>
2009 ...	1075	1067	1067	1120	1117	1078	1086	1060	1050	1048	1064	1067	1075
2010 ...	1119	1156	1218	1300	1325	1260	1274	1308	1308	1261	1243	1296	1256
2011 ...	1422	1461	1538	1607	1537	1490	1543	1559	1521	1593	1611	1594	1540
2012 ...	1655	1694	1695	1647	1624	1648	1578	1591	1564	1637	1630	1627	1633
2013 ...	1663	1637	1605	1626	1661	1660	1661	1683	1679	1671			1655
Year	Dairy products												
	January	February	March	April	May	June	July	August	September	October	November	December	Average <sup>1</sup>
2009 ...	818	714	720	732	714	695	695	745	800	880	948	1015	790
2010 ...	991	972	911	898	923	948	978	1028	1089	1138	1101	1028	1000
2011 ...	1028	1175	1255	1206	1206	1298	1341	1360	1298	1231	1261	1212	1239
2012 ...	1163	1083	1058	1034	997	1003	1040	1120	1212	1329	1360	1280	1140
2013 ...	1224	1200	1175	1200	1212	1200	1169	1200	1237	1249			1207
Year	Poultry & eggs												
	January	February	March	April	May	June	July	August	September	October	November	December	Average <sup>1</sup>
2009 ...	419	395	384	394	399	412	407	372	362	357	384	400	390
2010 ...	422	413	452	409	420	424	434	424	412	426	457	426	427
2011 ...	389	394	415	438	428	435	421	444	408	412	434	448	422
2012 ...	418	441	484	441	451	447	433	453	465	455	509	508	459
2013 ...	516	507	554	526	571	538	507	474	477	473			514

<sup>1</sup> Simple average required for parity regulations. Weighted 1910-1914 average equals 100. Average is year-to-date for current year.

## Reliability of Prices Received Estimates

**Definition:** Prices received represent sales from producers to first buyers. They include all grades and qualities. The average commodity price from the survey multiplied by the total quantity marketed theoretically should give the total cash receipts for the commodity.

**Survey procedures:** Primary sales data used to determine grain prices were obtained from probability samples of about 1900 mills and elevators. These procedures ensure that virtually all grain moving into commercial channels has a chance of being included in the survey. Generally, States surveyed account for 90 percent or more of total United States production. Livestock prices are obtained from packers, stockyards, auctions, dealers, and market check data from AMS-USDA, private marketing organizations, and state commodity groups and agencies. Inter-farm sales of grain and livestock are not included since they represent very small percentages of the total sales. Grain marketed for seed is also excluded. Fruit and vegetable prices are obtained from sample surveys and market check data from AMS-USDA, private marketing organizations, state agencies, and universities.

**Summary and estimation procedures:** Survey quantities sold are expanded by strata to state levels and used to weight average strata prices to a state average. State prices are then weighted to a United States price based on expanded sales. Recommendations are prepared by the State Field Offices and reviewed by the Agricultural Statistics Board in Washington, D.C. State recommendations are reviewed for reasonableness with survey data, other States, and recent historic estimates.

**Revisions:** For most items, the current month's preliminary price represents a 3-5 day period around the 15th of the month. Previous month's prices represent actual dollars received for quantities sold during the entire month. Revisions are published in monthly issues of *Agricultural Prices*.

**Reliability:** United States price estimates based on probability surveys generally have a sampling error of less than one percent for the major commodities such as corn, wheat, soybeans, cotton, and rice. Current methods of summarization for non-probability commodities are not designed directly to calculate sampling errors. However, analytical measures approximate the United States relative sampling errors at around five percent. Any non-sampling errors are attributed to such things as the inability to obtain correct information, differences in interpreting questions or definitions, mistakes in coding or processing the data, etc. Efforts are made at each step in the survey process to minimize these non-sampling errors.

## Prices Paid by Farmers

The October Index of Prices Paid for Commodities and Services, Interest, Taxes, and Farm Wage Rates (PPITW), at 218 (1990-1992=100), is up 0.5 percent from September but unchanged from October 2012.

**Production index:** The October index, at 230, is unchanged from last month but decreased 0.9 percent from last year. Higher prices in October for concentrates, feeder cattle, feeder pigs, and nitrogen offset lower prices for feed grains, complete feeds, diesel, and gasoline.

**Feed:** The October index, at 255, increased 0.4 percent from September but decreased 8.9 percent from last October. Since September, higher prices for concentrates and hay & forages offset lower prices for feed grains, complete feeds, and supplements.

**Livestock and poultry:** The October index, at 184, increased 5.1 percent from last month and 13 percent from last year. Since September, prices for feeder cattle, feeder pigs, and milk cows are higher. The October feeder cattle price, at \$162.00 per cwt, is up \$6.40 per cwt from the September price. October feeder pigs averaged \$174.00 per cwt, up \$30.00 per cwt from September.

**Fertilizer:** The October index, at 282, is up 0.4 percent from September but 13 percent below October a year ago. Since September, higher prices for nitrogen offset lower prices for potash & phosphate and mixed fertilizer.

**Chemicals:** The October index, at 160, increased 0.6 percent from September and 3.9 percent from last October. Compared with last month, prices for herbicides, insecticides, and fungicides/other are higher.

**Fuels:** The October index, at 359, is down 1.6 percent from a month earlier and 3.0 percent below October 2012. Compared with last month, prices are lower for diesel and gasoline but higher for LP gas.

**Machinery:** The October index, at 263, is unchanged from September but is 1.5 percent above last October.

**Consumer price index:** The September 2013 Consumer Price Index, as issued by the Bureau of Labor Statistics, for all urban consumers (CPI-U) increased 0.1 percent before seasonal adjustment to a level of 234.149 (1982-1984=100). The August index is 233.877. For the 12 month period ending in September, the overall index increased 1.2 percent.

## Prices Paid Indexes and Related Parity Ratios – United States: October 2013 with Comparisons

[Revised historical price indexes for months not shown are available at [www.nass.usda.gov](http://www.nass.usda.gov)]

Indexes and ratios	1910-1914 Base			1990-1992 Base		
	October 2012	September 2013	October 2013	October 2012	September 2013	October 2013
	(percent)	(percent)	(percent)	(percent)	(percent)	(percent)
Prices paid by farmers for commodities, services, interest, taxes, and wage rates (PPITW) .....	2897	2888	2898	218	217	218
Production .....	2250	2227	2236	232	230	230
Feed .....	1365	1239	1244	280	254	255
Livestock and poultry .....	2084	2242	2354	163	175	184
Seeds .....	3606	3776	3776	364	381	381
Fertilizer .....	1196	1031	1034	326	281	282
Chemicals .....	954	981	987	154	159	160
Fuels .....	2852	2818	2771	370	365	359
Supplies and repairs .....	1220	1220	1219	172	172	172
Autos and trucks .....	3130	3177	3184	118	119	120
Machinery .....	6505	6603	6603	259	263	263
Building materials .....	2395	2443	2448	176	180	180
Services and rent .....	2183	2246	2247	(NA)	(NA)	(NA)
Services .....	(NA)	(NA)	(NA)	167	172	172
Rent .....	(NA)	(NA)	(NA)	212	217	217
Interest <sup>1</sup> .....	3684	3594	3594	147	143	143
Taxes <sup>2</sup> .....	6080	6273	6273	227	234	234
Wage rates .....	7599	7696	7696	203	206	206
Production, interest, taxes, and wage rates (PITW) .....	3034	3016	3027	226	225	225
Family living-CPI <sup>3</sup> .....	2197	2224	2226	172	174	174
Ratio (received/paid) .....	(NA)	(NA)	(NA)	96	86	86
Parity ratio <sup>4</sup> .....	46	41	41	(NA)	(NA)	(NA)
Parity ratio adjusted <sup>5</sup> .....	47	42	42	(NA)	(NA)	(NA)
PPITW adjusted for productivity <sup>6</sup> .....	1518	1487	1489	(NA)	(NA)	(NA)
Crop sector (PPITW) .....	(NA)	(NA)	(NA)	223	223	223
Livestock sector (PPITW) .....	(NA)	(NA)	(NA)	212	210	212
Farm sector (production) .....	(NA)	(NA)	(NA)	256	251	255
Non-farm sector (production) .....	(NA)	(NA)	(NA)	219	217	217

(NA) Not available.

<sup>1</sup> Interest per acre on farm real estate debt and interest rate on farm non-real estate debt.

<sup>2</sup> Farm real estate taxes payable per acre.

<sup>3</sup> Bureau of Labor Statistics, Consumer Price Index for all urban consumers (CPI-U), for the previous month converted by the USDA.

<sup>4</sup> Ratio of index of prices received to PPITW (1910-1914=100).

<sup>5</sup> Based on estimated cash receipts, from marketings and government payments, the preliminary adjustment factor is 1.044 for 2013 and the revised factor is 1.041 for 2012.

<sup>6</sup> PPITW is adjusted based on productivity trend for the prior 15 years.

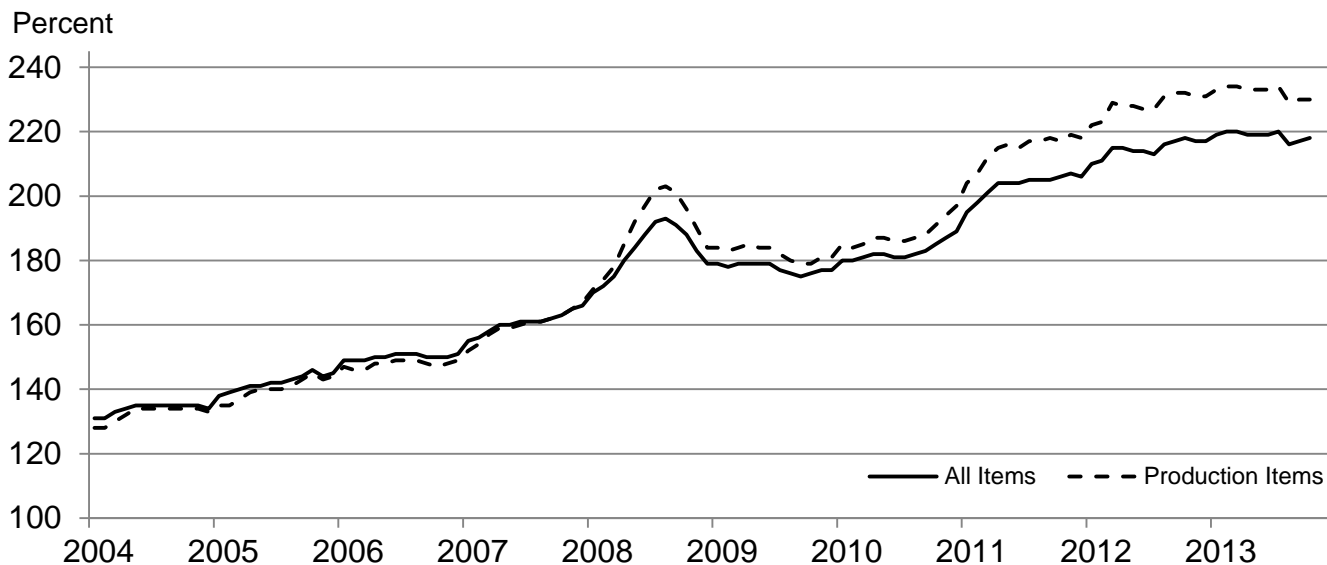
# Prices Paid Indexes and Annual Weights for Input Components and Sub-components – United States: October 2013 with Comparisons

[Revised historical price indexes for months not shown are available at [www.nass.usda.gov](http://www.nass.usda.gov). Relative weights are a five year moving average]

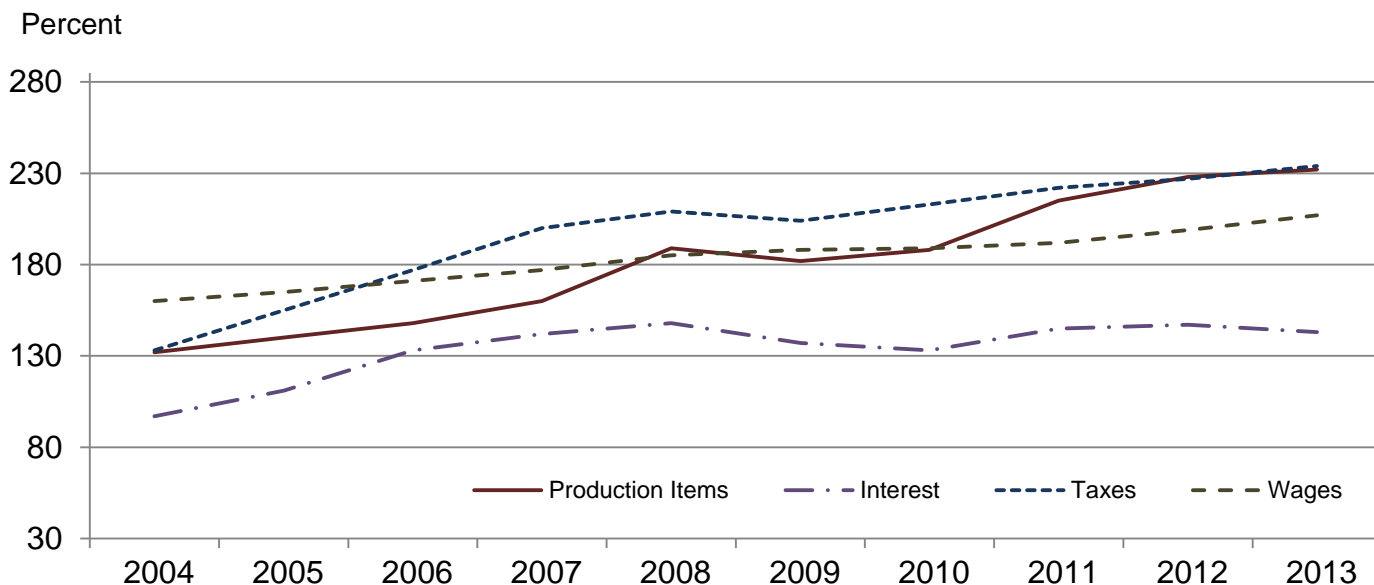
	Relative weights		Indexes (1990-1992=100)		
	2012	2013	October 2012	September 2013	October 2013
	(percent)	(percent)	(percent)	(percent)	(percent)
Production items .....	71.1	71.9	232	230	230
Feed .....	12.7	13.4	280	254	255
Feed grains .....	1.8	1.9	294	230	195
Complete feeds .....	6.2	6.6	286	258	253
Hay and forages .....	1.6	1.7	246	227	230
Concentrates .....	2.0	2.1	273	296	348
Supplements .....	1.1	1.1	282	229	229
Livestock and poultry .....	8.3	8.0	163	175	184
Feeder cattle .....	6.5	6.3	176	184	191
Feeder pigs .....	0.7	0.6	76	157	189
Milk cow replacements .....	0.7	0.7	123	121	124
Poultry .....	0.5	0.5	166	166	166
Seeds .....	4.3	4.4	364	381	381
Field crops .....	3.9	4.0	384	402	402
Grasses and legumes .....	0.4	0.4	178	184	184
Fertilizer .....	5.7	6.1	326	281	282
Mixed fertilizer .....	2.5	2.7	288	267	266
Nitrogen .....	2.4	2.6	345	282	287
Potash and phosphate .....	0.8	0.9	392	322	316
Chemicals .....	3.2	3.2	154	159	160
Herbicides .....	2.0	2.0	139	142	143
Insecticides .....	0.7	0.7	178	185	186
Fungicides and other .....	0.5	0.5	185	191	193
Fuels .....	4.0	4.0	370	365	359
Diesel .....	2.5	2.5	415	396	389
Gasoline .....	0.8	0.8	324	306	291
LP gas .....	0.7	0.7	257	324	332
Supplies and repairs .....	4.6	4.5	172	172	172
Supplies .....	1.5	1.5	167	167	167
Repairs .....	3.0	3.0	174	174	174
Autos and trucks .....	1.2	1.2	118	119	120
Autos .....	0.2	0.2	115	115	115
Trucks .....	1.1	1.1	118	120	120
Machinery .....	4.3	4.5	259	263	263
Tractors .....	0.9	1.0	215	216	216
Self-propelled .....	1.7	1.8	275	280	280
Other machinery .....	1.6	1.7	268	273	273
Building materials .....	4.2	4.1	176	180	180
Services .....	12.0	11.7	167	172	172
Custom rates .....	1.2	1.2	157	157	157
Other services .....	10.7	10.5	168	174	174
Rent .....	6.6	6.7	212	217	217
Cash .....	3.5	3.6	270	278	278
Share .....	3.0	3.1	145	147	147
Interest .....	3.4	3.2	147	143	143
Taxes .....	3.1	3.1	227	234	234
Wage rates .....	7.2	6.9	203	206	206
Family living-CPI .....	15.3	15.0	172	174	174



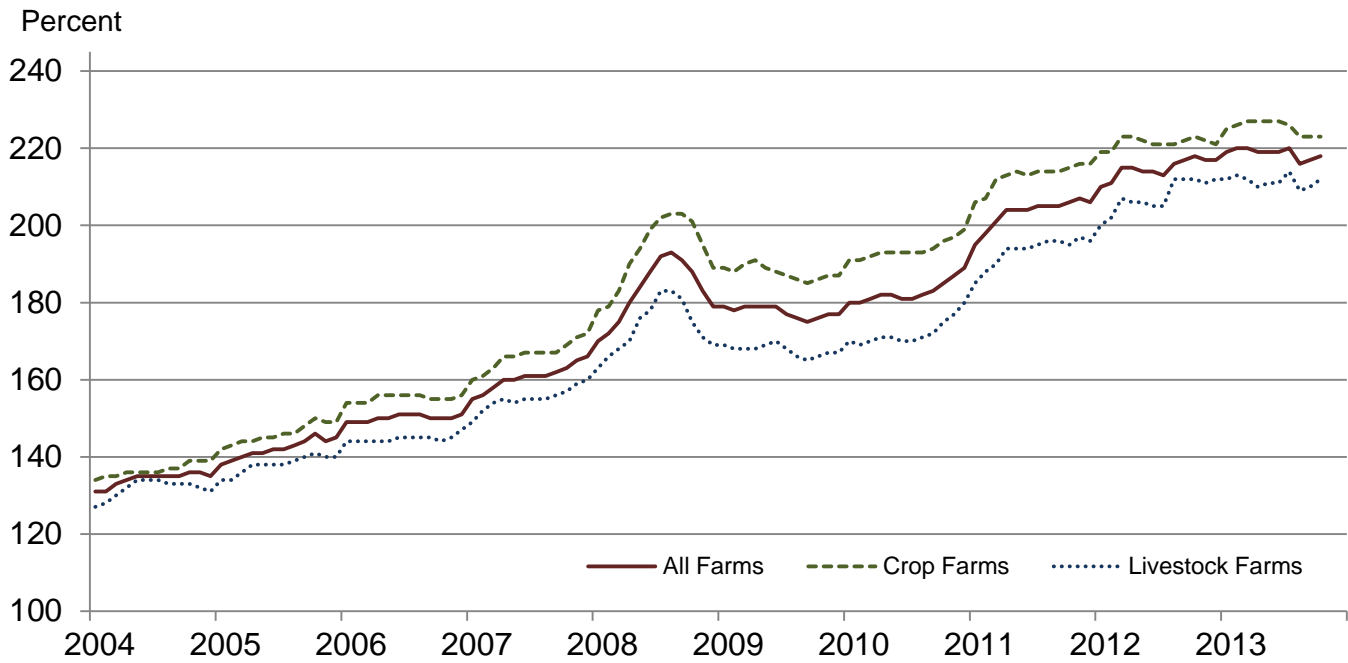
## Paid Indexes by Month, All Items and Production Items – United States: 1990-1992=100



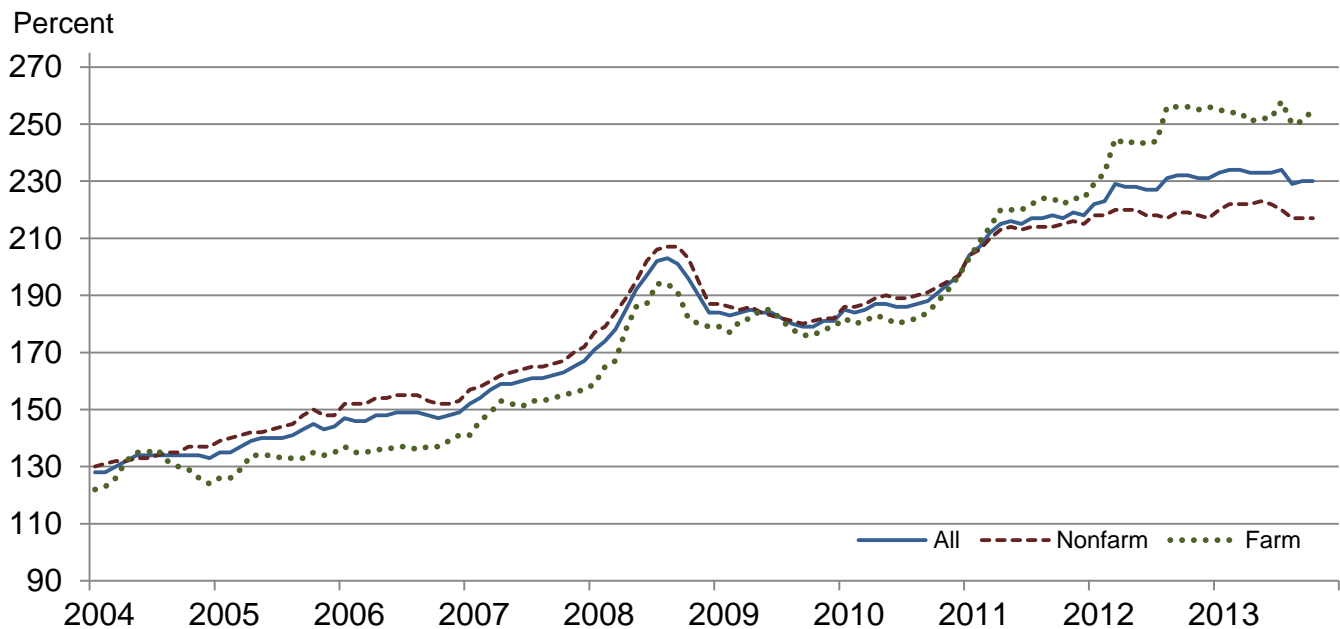
## Paid Indexes, Annual Averages, Production Items, Interest, Taxes, and Wages – United States: 1990-1992=100



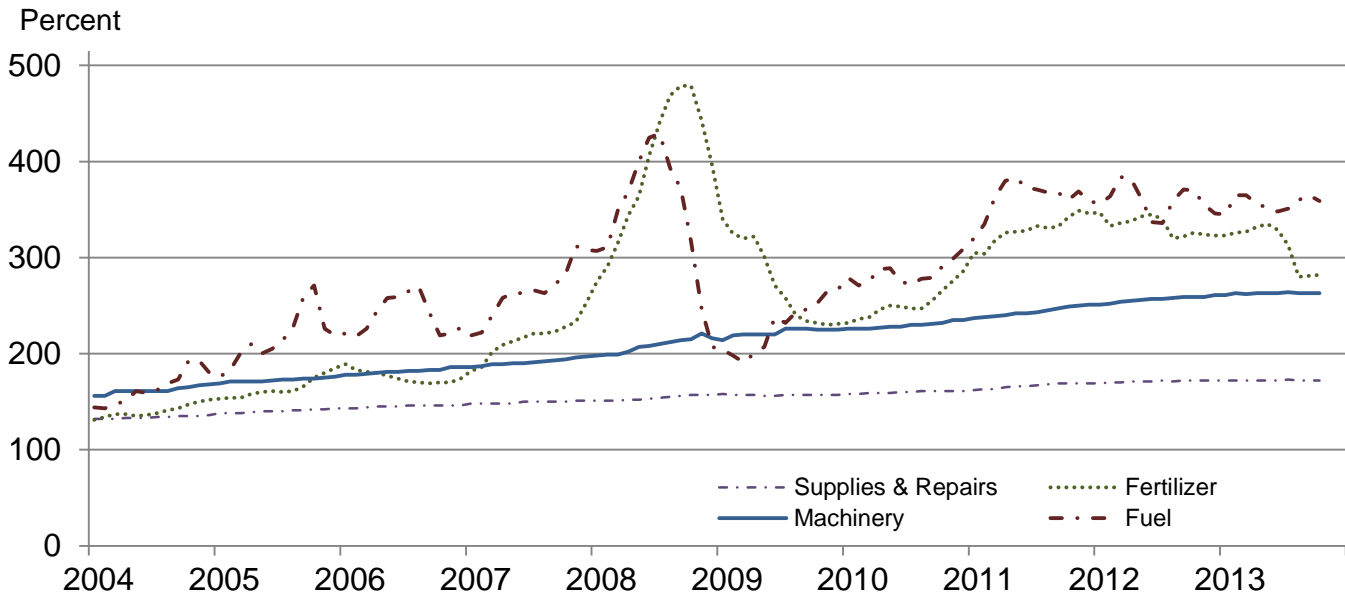
## Paid Indexes by Farm Type and Month, All Items – United States: 1990-1992=100



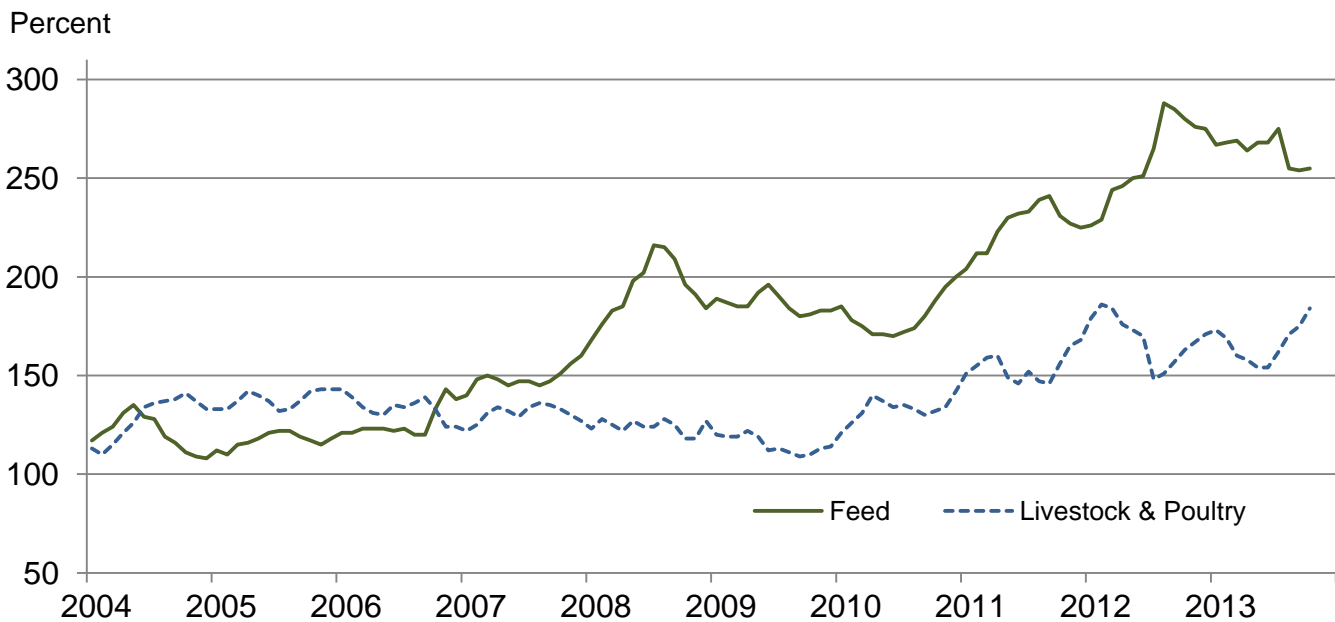
## Paid Indexes by Origin and Month, All Production Items – United States: 1990-1992=100



## Paid Indexes by Non-Farm Sector and Month, Supplies & Repairs, Fertilizer, Machinery, and Fuel – United States: 1990-1992=100



## Paid Indexes by Month, Feed and Livestock & Poultry – United States: 1990-1992=100



## Feed Price Ratios – United States: October 2013 with Comparisons

Feed price ratio <sup>1</sup>	October 2012	September 2013	Preliminary October 2013
Broiler-feed: pounds of broiler grower feed equal in value to 1 pound of broiler, live weight <sup>2</sup> .....	2.9	3.6	3.9
Market egg feed: pounds of laying feed equal in value to 1 dozen eggs <sup>3</sup> .....	5.6	6.4	7.4
Hog-corn: bushels of corn equal in value to 100 pounds of hog, live weight .....	9.1	13.1	15.5
Milk-feed: pounds of 16% mixed dairy feed equal in value to 1 pound of whole milk <sup>4</sup> .....	1.74	1.88	2.09
Steer and heifer-corn: bushels of corn equal in value to 100 pounds of steer & heifers, live weight .....	18.7	23.5	28.5
Turkey-feed: pounds of turkey grower equal in value to 1 pound of turkey, live weight <sup>5</sup> .....	4.9	5.0	5.6

<sup>1</sup> Effective January 1995, prices of commercial prepared feeds are based on current United States prices received for corn, soybeans, alfalfa hay, and all wheat.

<sup>2</sup> The price of commercial prepared broiler feed is based on current United States prices received for corn and soybeans. The modeled feed uses 58 percent corn and 42 percent soybeans.

<sup>3</sup> The price of commercial prepared layer feed is based on current United States prices received for corn and soybeans. The modeled feed uses 75 percent corn and 25 percent soybeans.

<sup>4</sup> The price of commercial prepared dairy feed is based on current United States prices received for corn, soybeans, and alfalfa hay. The modeled feed uses 51 percent corn, 41 percent alfalfa hay, and 8 percent soybeans.

<sup>5</sup> The price of commercial prepared turkey feed is based on current United States prices received for corn, soybeans, and wheat. The modeled feed uses 51 percent corn, 28 percent soybeans, and 21 percent wheat.

## Prices Received Used to Calculate Feed Price Ratios – United States: October 2013 with Comparisons

[Price data source for livestock and poultry commodities is United States Department of Agriculture's Agricultural Marketing Service]

Item	October 2012	September 2013	Preliminary October 2013
	(dollars)	(dollars)	(dollars)
Broilers, live .....pound	0.490	0.540	0.530
Eggs, market .....dozen	0.837	0.823	0.836
Hogs, all .....cwt	62.00	70.70	69.70
Milk, all .....cwt	21.60	20.10	20.30
Steers and heifers .....cwt	127.00	127.00	128.00
Turkeys, live .....pound	0.769	0.679	0.701
Corn .....bushel	6.78	5.40	4.49
Hay, alfalfa .....ton	212.00	194.00	193.00
Soybeans .....bushel	14.20	13.30	12.60
Wheat, all .....bushel	8.38	6.80	7.09

## Prices Paid for Feeder Livestock – United States: October 2013 with Comparisons

[Price data source is United States Department of Agriculture's Agricultural Marketing Service]

Item	October 2012	September 2013	Preliminary October 2013
	(dollars)	(dollars)	(dollars)
Feeder cattle and calves .....cwt	149.00	155.60	162.00
Feeder pigs .....cwt	70.00	144.00	174.00

**Prices Paid Indexes as a Percent of 1990-1992 Base, Monthly and Annual Average – United States: 2009-2013**

[Revised historical price indexes for months not shown are available at [www.nass.usda.gov](http://www.nass.usda.gov). Blank data cells indicate estimation period has not begun]

Year	Commodities, services, interest, taxes, and wage rates (PPITW)												
	January	February	March	April	May	June	July	August	September	October	November	December	Average <sup>1</sup>
2009 ...	179	178	179	179	179	179	177	176	175	176	177	177	178
2010 ...	180	180	181	182	182	181	181	182	183	185	187	189	183
2011 ...	195	198	201	204	204	204	205	205	205	206	207	206	203
2012 ...	210	211	215	215	214	214	213	216	217	218	217	217	215
2013 ...	219	220	220	219	219	219	220	216	217	218			219
Year	Items used for production, interest, taxes, and wage rates (PITW)												
	January	February	March	April	May	June	July	August	September	October	November	December	Average <sup>1</sup>
2009 ...	183	182	183	183	183	183	181	179	178	179	180	181	181
2010 ...	184	183	184	186	186	185	185	185	187	190	192	194	187
2011 ...	201	204	208	210	211	210	212	212	212	212	214	213	210
2012 ...	217	218	223	222	222	221	221	224	225	226	225	225	222
2013 ...	227	228	228	227	228	227	228	224	225	225			227
Year	Items used for production												
	January	February	March	April	May	June	July	August	September	October	November	December	Average <sup>1</sup>
2009 ...	184	183	184	185	184	184	182	180	179	179	181	181	182
2010 ...	185	184	185	187	187	186	186	187	188	191	194	197	188
2011 ...	204	207	212	215	216	215	217	217	218	217	219	218	215
2012 ...	222	223	229	228	228	227	227	231	232	232	231	231	228
2013 ...	233	234	234	233	233	233	234	229	230	230			232
Year	Feed												
	January	February	March	April	May	June	July	August	September	October	November	December	Average <sup>1</sup>
2009 ...	189	187	185	185	192	196	190	184	180	181	183	183	186
2010 ...	185	178	175	171	171	170	172	174	180	188	195	200	180
2011 ...	204	212	212	223	230	232	233	239	241	231	227	225	226
2012 ...	226	229	244	246	250	251	265	288	285	280	276	275	260
2013 ...	267	268	269	264	268	268	275	255	254	255			264
Year	Livestock & poultry												
	January	February	March	April	May	June	July	August	September	October	November	December	Average <sup>1</sup>
2009 ...	120	119	119	122	119	112	113	111	109	110	113	114	115
2010 ...	121	126	131	140	137	134	135	133	130	132	134	142	133
2011 ...	151	155	159	160	149	146	152	147	146	156	165	168	155
2012 ...	179	186	184	176	173	170	148	151	157	163	167	171	169
2013 ...	173	169	160	158	154	154	162	171	175	184			166
Year	Seeds												
	January	February	March	April	May	June	July	August	September	October	November	December	Average <sup>1</sup>
2009 ...	275	275	304	304	304	304	304	304	304	304	304	304	299
2010 ...	304	304	311	311	311	311	311	311	311	311	311	311	310
2011 ...	311	311	336	336	336	336	336	336	336	336	336	336	332
2012 ...	336	336	364	364	364	364	364	364	364	364	364	364	359
2013 ...	364	364	381	381	381	381	381	381	381	381			378
Year	Fertilizer												
	January	February	March	April	May	June	July	August	September	October	November	December	Average <sup>1</sup>
2009 ...	340	325	320	322	301	271	258	240	234	232	230	231	275
2010 ...	232	236	238	246	250	249	247	247	255	266	276	286	252
2011 ...	305	304	318	326	327	328	333	331	332	342	349	346	328
2012 ...	347	333	336	338	343	345	340	320	322	326	324	323	333
2013 ...	323	326	327	332	335	329	313	280	281	282			313
Year	Chemicals												
	January	February	March	April	May	June	July	August	September	October	November	December	Average <sup>1</sup>
2009 ...	142	148	150	152	153	148	149	145	146	148	153	154	149
2010 ...	143	143	143	144	144	145	145	146	146	146	144	144	144
2011 ...	144	145	145	144	144	143	144	145	146	148	147	148	145
2012 ...	149	152	152	151	152	153	153	154	154	154	156	156	153
2013 ...	157	157	158	157	158	157	158	158	159	160			158

See footnote(s) at end of table.

--continued

**Prices Paid Indexes as a Percent of 1990-1992 Base, Monthly and Annual Average – United States: 2009-2013 (continued)**

[Revised historical price indexes for months not shown are available at [www.nass.usda.gov](http://www.nass.usda.gov). Blank data cells indicate estimation period has not begun]

Year	Fuels												
	January	February	March	April	May	June	July	August	September	October	November	December	Average <sup>1</sup>
2009 ...	204	198	191	200	207	238	232	243	246	252	265	267	229
2010 ...	279	271	276	288	289	275	272	278	279	291	299	309	284
2011 ...	320	335	363	380	383	373	371	368	368	360	369	359	362
2012 ...	356	364	384	382	361	337	336	359	371	370	355	346	360
2013 ...	345	365	365	356	352	348	351	360	365	359			357
Year	Supplies & repairs												
	January	February	March	April	May	June	July	August	September	October	November	December	Average <sup>1</sup>
2009 ...	158	157	157	157	156	156	157	157	157	157	157	157	157
2010 ...	158	158	159	159	159	160	160	161	161	161	161	161	160
2011 ...	162	163	163	165	166	166	167	168	169	169	169	169	166
2012 ...	169	170	170	171	171	171	172	171	172	172	172	172	171
2013 ...	172	172	172	172	172	172	173	172	172	172			172
Year	Autos & trucks												
	January	February	March	April	May	June	July	August	September	October	November	December	Average <sup>1</sup>
2009 ...	107	108	109	109	109	110	110	109	109	111	112	113	110
2010 ...	113	113	113	113	112	112	112	112	112	112	113	113	113
2011 ...	114	115	115	116	116	116	116	116	116	116	116	116	116
2012 ...	117	118	118	118	118	118	117	117	117	118	118	119	118
2013 ...	119	119	119	120	120	120	120	119	119	120			120
Year	Machinery												
	January	February	March	April	May	June	July	August	September	October	November	December	Average <sup>1</sup>
2009 ...	214	219	220	220	220	220	226	226	226	225	225	225	222
2010 ...	226	226	226	227	228	228	230	230	231	232	235	235	230
2011 ...	237	238	239	240	242	242	243	245	247	249	250	251	244
2012 ...	251	252	254	255	256	257	257	258	259	259	259	261	257
2013 ...	261	263	262	263	263	263	264	263	263	263			263
Year	Building materials												
	January	February	March	April	May	June	July	August	September	October	November	December	Average <sup>1</sup>
2009 ...	167	165	164	163	163	163	162	162	163	162	162	163	163
2010 ...	163	164	165	166	167	166	166	166	166	166	166	167	166
2011 ...	168	169	170	171	171	172	173	173	173	172	172	172	171
2012 ...	173	174	175	176	176	176	176	176	176	176	177	177	176
2013 ...	178	179	179	180	179	179	179	179	180	180			179
Year	Services <sup>2</sup>												
	January	February	March	April	May	June	July	August	September	October	November	December	Average <sup>1</sup>
2009 ...	157	157	156	156	156	158	156	156	156	156	156	156	156
2010 ...	160	159	160	160	160	162	162	162	162	161	161	161	161
2011 ...	163	163	164	163	164	165	165	165	165	164	164	164	164
2012 ...	167	167	167	167	167	169	168	168	168	167	167	167	167
2013 ...	170	170	170	170	171	172	172	172	172	172			171
Year	Rent <sup>2</sup>												
	January	February	March	April	May	June	July	August	September	October	November	December	Average <sup>1</sup>
2009 ...	184	184	184	184	184	184	184	184	184	184	184	184	184
2010 ...	190	190	190	190	190	190	190	190	190	190	190	190	190
2011 ...	205	205	205	205	205	205	205	205	205	205	205	205	205
2012 ...	212	212	212	212	212	212	212	212	212	212	212	212	212
2013 ...	217	217	217	217	217	217	217	217	217	217			217
Year	Ratio												
	January	February	March	April	May	June	July	August	September	October	November	December	Average <sup>1</sup>
2009 ...	78	71	70	72	73	75	74	72	72	76	77	77	74
2010 ...	76	73	76	74	76	75	76	77	78	82	82	81	77
2011 ...	85	86	86	86	86	88	89	90	87	90	89	87	87
2012 ...	90	86	86	83	84	86	90	90	90	96	95	92	89
2013 ...	99	90	91	88	89	91	91	88	86	86			90

See footnote(s) at end of table.

--continued

**Prices Paid 1990-1992 Base Indexes Monthly and Annual Average – United States:  
2009-2013 (continued)**

[Revised historical price indexes for months not shown are available at [www.nass.usda.gov](http://www.nass.usda.gov). Blank data cells indicate estimation period has not begun]

Year	January	February	March	April	May	June	July	August	September	October	November	December	Average <sup>1</sup>
Interest													
2009 ...	137	137	137	137	137	137	137	137	137	137	137	137	137
2010 ...	133	133	133	133	133	133	133	133	133	133	133	133	133
2011 ...	145	145	145	145	145	145	145	145	145	145	145	145	145
2012 ...	147	147	147	147	147	147	147	147	147	147	147	147	147
2013 ...	143	143	143	143	143	143	143	143	143	143	143	143	143
Year	January	February	March	April	May	June	July	August	September	October	November	December	Average <sup>1</sup>
Taxes													
2009 ...	204	204	204	204	204	204	204	204	204	204	204	204	204
2010 ...	213	213	213	213	213	213	213	213	213	213	213	213	213
2011 ...	222	222	222	222	222	222	222	222	222	222	222	222	222
2012 ...	227	227	227	227	227	227	227	227	227	227	227	227	227
2013 ...	234	234	234	234	234	234	234	234	234	234	234	234	234
Year	January	February	March	April	May	June	July	August	September	October	November	December	Average <sup>1</sup>
Wage rates													
2009 ...	189	189	189	188	188	188	184	184	184	189	189	189	188
2010 ...	191	191	191	187	187	187	186	186	186	192	192	192	189
2011 ...	195	195	195	189	189	189	189	189	189	193	193	193	192
2012 ...	199	199	199	197	197	197	196	196	196	203	203	203	199
2013 ...	208	208	208	206	206	206	206	206	206	206	206	206	207
Year	January	February	March	April	May	June	July	August	September	October	November	December	Average <sup>1</sup>
Family living													
2009 ...	157	157	158	158	159	160	160	160	160	160	160	160	159
2010 ...	161	161	161	162	162	162	162	162	162	162	162	163	162
2011 ...	163	164	166	167	168	167	168	168	168	168	168	167	167
2012 ...	168	169	170	171	170	170	170	171	172	172	171	170	170
2013 ...	171	172	173	173	173	173	173	173	174	174			173
Year	January	February	March	April	May	June	July	August	September	October	November	December	Average <sup>1</sup>
Production items with farm origin <sup>3</sup>													
2009 ...	179	177	181	182	185	185	181	178	176	176	178	179	180
2010 ...	182	180	181	183	182	180	181	182	184	188	192	197	184
2011 ...	203	209	214	220	220	220	222	224	224	222	224	224	219
2012 ...	229	233	245	243	244	243	244	256	256	256	255	256	247
2013 ...	255	254	254	251	252	252	258	250	251	255			253
Year	January	February	March	April	May	June	July	August	September	October	November	December	Average <sup>1</sup>
Production items with non-farm origin <sup>4</sup>													
2009 ...	187	186	185	186	184	183	182	181	180	181	182	182	183
2010 ...	186	186	187	189	190	189	189	190	191	193	195	197	190
2011 ...	204	206	210	213	214	213	214	214	214	215	216	215	212
2012 ...	218	218	220	220	220	218	218	217	219	219	218	217	219
2013 ...	220	222	222	222	223	222	220	217	217	217			220
Year	January	February	March	April	May	June	July	August	September	October	November	December	Average <sup>1</sup>
Crop sector (PPITW)													
2009 ...	189	188	190	191	189	188	187	186	185	186	187	187	188
2010 ...	191	191	192	193	193	193	193	193	194	196	197	199	194
2011 ...	206	207	212	213	214	213	214	214	214	215	216	216	213
2012 ...	219	219	223	223	222	221	221	221	222	223	222	221	221
2013 ...	225	226	227	227	227	227	226	223	223	223			225
Year	January	February	March	April	May	June	July	August	September	October	November	December	Average <sup>1</sup>
Livestock Sector (PPITW)													
2009 ...	169	168	168	168	169	170	168	166	165	166	167	167	168
2010 ...	170	169	170	171	171	170	170	171	172	175	177	180	172
2011 ...	185	188	190	194	194	194	195	196	196	195	197	196	193
2012 ...	200	202	207	206	206	205	205	212	212	212	211	212	208
2013 ...	212	213	212	210	211	211	214	209	210	212			211

<sup>1</sup> Simple average and is year-to-date for current year.

<sup>2</sup> For the 1990-92=100 base period, the Services & Rent Index is separated.

<sup>3</sup> Feed, livestock & poultry purchases, and seed.

<sup>4</sup> Fertilizer, agricultural chemicals, fuels, supplies & repairs, autos & trucks, machinery, building materials, and services & rent.

**Prices Paid Indexes as a Percent of 1910-1914 Base, Monthly and Annual Average – United States: 2009-2013**

[Revised historical price indexes for months not shown are available at [www.nass.usda.gov](http://www.nass.usda.gov). Blank data cells indicate estimation period has not begun]

Year	Commodities, services, interest, taxes, and wage rates (PPITW)												
	January	February	March	April	May	June	July	August	September	October	November	December	Average <sup>1</sup>
2009 ...	2381	2369	2377	2386	2383	2381	2359	2342	2332	2342	2355	2358	2364
2010 ...	2402	2396	2407	2421	2424	2412	2415	2420	2433	2467	2493	2522	2434
2011 ...	2601	2631	2679	2710	2716	2714	2726	2732	2736	2736	2751	2743	2706
2012 ...	2794	2806	2862	2856	2855	2844	2839	2880	2892	2897	2885	2883	2858
2013 ...	2913	2926	2931	2918	2922	2918	2929	2881	2888	2898			2912
Year	Items used for production, interest, taxes, and wage rates (PITW)												
	January	February	March	April	May	June	July	August	September	October	November	December	Average <sup>1</sup>
2009 ...	2463	2447	2455	2465	2460	2454	2428	2406	2394	2405	2422	2425	2435
2010 ...	2473	2465	2477	2493	2496	2483	2485	2492	2507	2546	2578	2612	2509
2011 ...	2703	2737	2790	2825	2830	2828	2842	2848	2852	2853	2870	2862	2820
2012 ...	2921	2933	2996	2988	2987	2974	2970	3015	3029	3034	3022	3021	2991
2013 ...	3053	3065	3069	3054	3058	3052	3066	3008	3016	3027			3047
Year	Items used for production												
	January	February	March	April	May	June	July	August	September	October	November	December	Average <sup>1</sup>
2009 ...	1788	1774	1782	1791	1787	1782	1763	1744	1734	1738	1752	1755	1766
2010 ...	1792	1785	1796	1814	1816	1805	1808	1813	1826	1854	1882	1912	1825
2011 ...	1977	2006	2052	2088	2092	2091	2103	2108	2112	2109	2124	2117	2082
2012 ...	2156	2166	2221	2216	2215	2204	2201	2240	2252	2250	2239	2238	2217
2013 ...	2256	2266	2270	2259	2262	2257	2269	2220	2227	2236			2252
Year	Feed												
	January	February	March	April	May	June	July	August	September	October	November	December	Average <sup>1</sup>
2009 ...	921	911	903	901	937	959	925	900	881	883	894	891	909
2010 ...	905	868	854	835	836	831	841	849	881	917	952	974	879
2011 ...	996	1035	1037	1089	1121	1133	1135	1169	1175	1126	1110	1096	1102
2012 ...	1105	1119	1190	1199	1223	1225	1295	1405	1393	1365	1346	1344	1267
2013 ...	1306	1308	1315	1290	1307	1307	1341	1244	1239	1244			1290
Year	Livestock & poultry												
	January	February	March	April	May	June	July	August	September	October	November	December	Average <sup>1</sup>
2009 ...	1539	1517	1518	1565	1516	1436	1445	1418	1399	1409	1444	1463	1472
2010 ...	1547	1611	1674	1786	1750	1709	1724	1704	1662	1684	1717	1811	1698
2011 ...	1930	1984	2032	2040	1909	1866	1939	1880	1866	1988	2104	2152	1974
2012 ...	2287	2378	2356	2252	2208	2171	1896	1930	2004	2084	2131	2188	2157
2013 ...	2212	2156	2042	2023	1968	1971	2074	2186	2242	2354			2123
Year	Seeds												
	January	February	March	April	May	June	July	August	September	October	November	December	Average <sup>1</sup>
2009 ...	2722	2722	3008	3008	3008	3008	3008	3008	3008	3008	3008	3008	2960
2010 ...	3008	3008	3082	3082	3082	3082	3082	3082	3082	3082	3082	3082	3070
2011 ...	3082	3082	3327	3327	3327	3327	3327	3327	3327	3327	3327	3327	3286
2012 ...	3327	3327	3606	3606	3606	3606	3606	3606	3606	3606	3606	3606	3560
2013 ...	3606	3606	3776	3776	3776	3776	3776	3776	3776	3776			3742
Year	Fertilizer												
	January	February	March	April	May	June	July	August	September	October	November	December	Average <sup>1</sup>
2009 ...	1246	1191	1173	1181	1102	992	944	881	856	849	845	848	1009
2010 ...	851	866	871	903	918	914	904	907	935	975	1010	1049	925
2011 ...	1119	1116	1165	1195	1197	1203	1220	1214	1217	1253	1279	1270	1204
2012 ...	1270	1220	1232	1238	1257	1263	1248	1173	1180	1196	1189	1184	1221
2013 ...	1186	1196	1199	1216	1228	1205	1147	1028	1031	1034			1147
Year	Chemicals												
	January	February	March	April	May	June	July	August	September	October	November	December	Average <sup>1</sup>
2009 ...	877	915	930	941	944	913	919	895	906	914	943	954	921
2010 ...	885	885	887	892	893	895	899	900	903	900	893	887	893
2011 ...	891	895	894	892	890	886	891	894	902	912	910	918	898
2012 ...	919	942	938	931	938	947	948	951	954	954	967	966	946
2013 ...	972	969	974	972	974	973	977	974	981	987			975

See footnote(s) at end of table.

--continued



**Prices Paid Indexes as a Percent of 1910-1914 Base, Monthly and Annual Average – United States: 2009-2013 (continued)**

[Revised historical price indexes for months not shown are available at [www.nass.usda.gov](http://www.nass.usda.gov). Blank data cells indicate estimation period has not begun]

Year	Fuels												
	January	February	March	April	May	June	July	August	September	October	November	December	Average <sup>1</sup>
2009 ...	1575	1526	1476	1546	1600	1835	1788	1874	1897	1948	2048	2061	1765
2010 ...	2151	2093	2133	2224	2229	2125	2100	2147	2152	2245	2305	2387	2191
2011 ...	2468	2589	2801	2931	2959	2875	2863	2843	2841	2778	2850	2769	2797
2012 ...	2745	2813	2966	2949	2786	2598	2594	2771	2859	2852	2741	2670	2779
2013 ...	2661	2815	2813	2744	2718	2683	2709	2779	2818	2771			2751
Year	Supplies & repairs												
	January	February	March	April	May	June	July	August	September	October	November	December	Average <sup>1</sup>
2009 ...	1119	1116	1114	1114	1109	1106	1111	1111	1111	1114	1114	1114	1113
2010 ...	1120	1124	1125	1127	1131	1133	1138	1139	1140	1141	1142	1143	1134
2011 ...	1151	1154	1155	1169	1176	1179	1187	1193	1198	1198	1198	1198	1180
2012 ...	1203	1204	1207	1212	1212	1214	1218	1217	1220	1220	1220	1218	1214
2013 ...	1222	1222	1221	1223	1222	1224	1226	1222	1220	1219			1222
Year	Autos & trucks												
	January	February	March	April	May	June	July	August	September	October	November	December	Average <sup>1</sup>
2009 ...	2841	2874	2892	2901	2909	2924	2932	2895	2903	2958	2987	2993	2917
2010 ...	2996	3004	3003	2996	2985	2979	2976	2975	2980	2989	3003	3014	2992
2011 ...	3026	3053	3067	3076	3089	3091	3084	3074	3071	3078	3084	3090	3074
2012 ...	3109	3133	3136	3138	3132	3132	3123	3121	3124	3130	3142	3151	3131
2013 ...	3168	3172	3175	3184	3180	3185	3179	3170	3177	3184			3177
Year	Machinery												
	January	February	March	April	May	June	July	August	September	October	November	December	Average <sup>1</sup>
2009 ...	5380	5501	5527	5523	5517	5508	5660	5662	5658	5655	5655	5652	5575
2010 ...	5677	5678	5674	5694	5717	5726	5769	5782	5802	5825	5894	5907	5762
2011 ...	5937	5982	6002	6029	6067	6083	6108	6150	6190	6237	6259	6287	6111
2012 ...	6304	6315	6360	6390	6411	6436	6456	6468	6493	6505	6509	6537	6432
2013 ...	6557	6585	6582	6589	6594	6589	6622	6603	6603	6603			6593
Year	Building materials												
	January	February	March	April	May	June	July	August	September	October	November	December	Average <sup>1</sup>
2009 ...	2263	2239	2232	2221	2217	2208	2207	2203	2208	2207	2205	2208	2218
2010 ...	2211	2224	2236	2253	2267	2258	2255	2254	2251	2251	2255	2263	2248
2011 ...	2277	2290	2305	2318	2326	2336	2347	2346	2345	2344	2341	2341	2326
2012 ...	2353	2370	2376	2386	2395	2395	2388	2391	2396	2395	2399	2404	2387
2013 ...	2418	2429	2434	2442	2436	2433	2433	2438	2443	2448			2435
Year	Services & rent <sup>2</sup>												
	January	February	March	April	May	June	July	August	September	October	November	December	Average <sup>1</sup>
2009 ...	1980	1978	1977	1974	1974	1985	1976	1975	1975	1974	1970	1970	1976
2010 ...	2027	2025	2031	2030	2033	2043	2043	2044	2043	2040	2037	2038	2036
2011 ...	2112	2114	2119	2118	2123	2132	2132	2132	2133	2125	2121	2120	2123
2012 ...	2179	2181	2180	2181	2184	2195	2191	2191	2193	2183	2182	2182	2185
2013 ...	2228	2229	2229	2229	2234	2245	2245	2245	2246	2247			2238

See footnote(s) at end of table.

--continued

**Prices Paid Indexes as a Percent of 1910-1914 Base, Monthly and Annual Average – United States: 2009-2013 (continued)**

[Revised historical price indexes for months not shown are available at [www.nass.usda.gov](http://www.nass.usda.gov). Blank data cells indicate estimation period has not begun]

Year	Interest												
	January	February	March	April	May	June	July	August	September	October	November	December	Average <sup>1</sup>
2009 ...	3436	3436	3436	3436	3436	3436	3436	3436	3436	3436	3436	3436	3436
2010 ...	3339	3339	3339	3339	3339	3339	3339	3339	3339	3339	3339	3339	3339
2011 ...	3646	3646	3646	3646	3646	3646	3646	3646	3646	3646	3646	3646	3646
2012 ...	3684	3684	3684	3684	3684	3684	3684	3684	3684	3684	3684	3684	3684
2013 ...	3594	3594	3594	3594	3594	3594	3594	3594	3594	3594	3594	3594	3594
Year	Taxes												
	January	February	March	April	May	June	July	August	September	October	November	December	Average <sup>1</sup>
2009 ...	5453	5453	5453	5453	5453	5453	5453	5453	5453	5453	5453	5453	5453
2010 ...	5694	5694	5694	5694	5694	5694	5694	5694	5694	5694	5694	5694	5694
2011 ...	5935	5935	5935	5935	5935	5935	5935	5935	5935	5935	5935	5935	5935
2012 ...	6080	6080	6080	6080	6080	6080	6080	6080	6080	6080	6080	6080	6080
2013 ...	6273	6273	6273	6273	6273	6273	6273	6273	6273	6273	6273	6273	6273
Year	Wage rates												
	January	February	March	April	May	June	July	August	September	October	November	December	Average <sup>1</sup>
2009 ...	7062	7062	7062	7017	7017	7017	6888	6888	6888	7062	7062	7062	7007
2010 ...	7159	7159	7159	6991	6991	6991	6972	6972	6972	7192	7192	7192	7079
2011 ...	7301	7301	7301	7075	7075	7075	7062	7062	7062	7205	7205	7205	7161
2012 ...	7444	7444	7444	7372	7372	7372	7340	7340	7340	7599	7599	7599	7439
2013 ...	7767	7767	7767	7696	7696	7696	7696	7696	7696	7696	7696	7696	7717
Year	Family living												
	January	February	March	April	May	June	July	August	September	October	November	December	Average <sup>1</sup>
2009 ...	2005	2015	2020	2025	2031	2049	2045	2050	2051	2053	2055	2051	2038
2010 ...	2058	2059	2067	2071	2072	2070	2071	2073	2075	2077	2078	2082	2071
2011 ...	2092	2102	2122	2136	2146	2144	2146	2152	2155	2150	2149	2143	2136
2012 ...	2153	2162	2179	2185	2183	2180	2176	2188	2198	2197	2187	2181	2181
2013 ...	2187	2205	2211	2209	2212	2218	2219	2221	2224	2226	2226	2226	2213
Year	Commodities, services, interest, taxes, and wage rates Adjusted for productivity												
	January	February	March	April	May	June	July	August	September	October	November	December	Average <sup>1</sup>
2009 ...	1421	1420	1422	1421	1421	1424	1410	1408	1407	1421	1424	1424	1419
2010 ...	1411	1410	1413	1403	1404	1402	1401	1402	1404	1425	1430	1434	1412
2011 ...	1457	1463	1473	1464	1466	1465	1466	1468	1469	1478	1480	1478	1469
2012 ...	1486	1489	1500	1495	1494	1492	1489	1496	1500	1518	1515	1514	1499
2013 ...	1491	1495	1497	1490	1491	1491	1493	1486	1487	1489	1489	1489	1491
Year	Parity ratio <sup>3</sup>												
	January	February	March	April	May	June	July	August	September	October	November	December	Average <sup>1</sup>
2009 ...	37	34	34	34	35	36	35	34	34	36	37	37	35
2010 ...	36	35	36	35	36	36	36	37	37	39	39	38	37
2011 ...	41	41	41	41	41	42	43	43	42	43	42	41	42
2012 ...	43	41	41	40	40	41	43	43	43	46	46	44	43
2013 ...	47	43	43	42	43	43	43	42	41	41	41	41	43
Year	Adjusted parity ratio (PPITW) <sup>4</sup>												
	January	February	March	April	May	June	July	August	September	October	November	December	Average <sup>1</sup>
2009 ...	39	35	35	36	36	37	37	36	36	38	38	38	37
2010 ...	37	36	38	37	38	37	38	38	39	40	41	40	38
2011 ...	42	42	42	42	42	43	44	44	43	44	44	43	43
2012 ...	44	42	42	41	41	42	44	44	44	47	47	45	44
2013 ...	49	44	45	43	44	45	45	43	42	42	42	42	44

<sup>1</sup> Simple average and is year-to-date for current year.

<sup>2</sup> For the 1990-1992=100 base reference period, the Services & Rent Index is separated.

<sup>3</sup> Ratio of index of prices received to index of prices paid for commodities, services, interest, taxes, and wage rates.

<sup>4</sup> Ratio of the index of prices received after adjustment for government payments to the index of prices paid for commodities, services, interest, taxes, and wage rates.

**Prices Paid Index Sub-Components as a Percent of 1990-1992 Base, Monthly and Annual Average – United States: 2009-2013**

[Revised historical price indexes for months not shown are available at [www.nass.usda.gov](http://www.nass.usda.gov). Blank data cells indicate estimation period has not begun]

Year	Feed grains												
	January	February	March	April	May	June	July	August	September	October	November	December	Average <sup>1</sup>
2009 ...	183	163	164	164	169	171	154	145	142	154	156	155	160
2010 ...	157	152	153	146	150	146	151	157	176	186	197	208	165
2011 ...	215	245	240	273	271	270	268	289	271	250	252	253	258
2012 ...	261	269	272	271	271	268	300	320	294	294	302	296	285
2013 ...	299	302	306	298	298	296	285	261	230	195			277
Year	Complete feeds												
	January	February	March	April	May	June	July	August	September	October	November	December	Average <sup>1</sup>
2009 ...	188	193	193	191	200	206	206	199	196	191	191	191	195
2010 ...	195	187	183	178	178	177	178	179	182	189	198	202	186
2011 ...	208	212	217	222	227	231	229	234	239	231	229	224	225
2012 ...	226	226	250	251	257	256	264	285	290	286	282	279	263
2013 ...	272	270	269	267	263	266	268	264	258	253			265
Year	Hay & forages												
	January	February	March	April	May	June	July	August	September	October	November	December	Average <sup>1</sup>
2009 ...	177	171	170	166	164	153	146	139	141	141	141	140	154
2010 ...	142	139	142	143	147	147	148	146	148	147	147	149	145
2011 ...	150	155	166	184	215	213	228	228	226	233	219	225	204
2012 ...	224	231	239	245	244	232	233	237	239	246	248	248	239
2013 ...	251	254	256	254	258	253	246	234	227	230			246
Year	Concentrates												
	January	February	March	April	May	June	July	August	September	October	November	December	Average <sup>1</sup>
2009 ...	190	183	179	186	197	215	199	198	188	190	193	194	193
2010 ...	190	187	183	176	182	184	190	193	187	197	209	208	191
2011 ...	213	214	204	204	207	213	212	211	216	201	192	184	206
2012 ...	194	201	203	212	224	241	267	301	297	273	254	260	244
2013 ...	241	241	247	230	276	274	327	252	296	348			273
Year	Supplements												
	January	February	March	April	May	June	July	August	September	October	November	December	Average <sup>1</sup>
2009 ...	215	222	206	210	219	214	204	208	200	210	225	223	213
2010 ...	230	206	200	204	182	182	180	181	215	225	220	229	205
2011 ...	230	238	225	236	242	240	240	257	268	250	257	251	245
2012 ...	234	232	245	232	240	235	258	302	288	282	276	285	259
2013 ...	263	267	268	267	243	242	241	229	229	229			248
Year	Feeder Cattle												
	January	February	March	April	May	June	July	August	September	October	November	December	Average <sup>1</sup>
2009 ...	112	110	109	116	117	113	116	114	111	109	111	111	112
2010 ...	115	120	125	134	131	129	132	132	127	130	134	141	129
2011 ...	149	153	157	159	151	150	156	151	151	162	171	173	157
2012 ...	182	190	188	182	182	178	157	163	171	176	174	176	177
2013 ...	177	171	163	162	157	159	169	179	184	191			171
Year	Feeder pigs												
	January	February	March	April	May	June	July	August	September	October	November	December	Average <sup>1</sup>
2009 ...	159	156	162	160	109	66	62	49	65	89	107	127	109
2010 ...	160	174	189	209	201	181	169	150	152	148	140	162	170
2011 ...	199	220	221	200	152	121	124	112	108	114	145	172	157
2012 ...	207	223	215	174	138	134	73	50	46	76	138	174	137
2013 ...	195	200	165	155	144	131	137	146	157	189			162
Year	Milk cow replacements												
	January	February	March	April	May	June	July	August	September	October	November	December	Average <sup>1</sup>
2009 ...	145	145	145	123	123	123	113	113	113	110	110	110	123
2010 ...	119	119	119	118	118	118	117	117	117	118	118	118	118
2011 ...	115	115	115	126	126	126	131	131	131	131	131	131	126
2012 ...	129	129	129	128	128	128	126	126	126	123	123	123	127
2013 ...	121	121	121	121	121	121	121	121	121	124			121

See footnote(s) at end of table.

--continued

**Prices Paid Index Sub-Components as a Percent of 1990-1992 Base, Monthly and Annual Average – United States: 2009-2013 (continued)**

[Revised historical price indexes for months not shown are available at [www.nass.usda.gov](http://www.nass.usda.gov). Blank data cells indicate estimation period has not begun]

Year	Poultry												
	January	February	March	April	May	June	July	August	September	October	November	December	Average <sup>1</sup>
2009 ...	149	149	149	149	149	149	149	149	149	149	149	149	149
2010 ...	151	151	151	151	151	151	151	151	151	151	151	151	151
2011 ...	158	158	158	158	158	158	158	158	158	158	158	158	158
2012 ...	166	166	166	166	166	166	166	166	166	166	166	166	166
2013 ...	166	166	166	166	166	166	166	166	166	166	166	166	166
Year	Field crop seeds												
	January	February	March	April	May	June	July	August	September	October	November	December	Average <sup>1</sup>
2009 ...	287	287	319	319	319	319	319	319	319	319	319	319	314
2010 ...	319	319	329	329	329	329	329	329	329	329	329	329	327
2011 ...	329	329	356	356	356	356	356	356	356	356	356	356	352
2012 ...	356	356	384	384	384	384	384	384	384	384	384	384	379
2013 ...	384	384	402	402	402	402	402	402	402	402	402	402	398
Year	Grass & legume seeds												
	January	February	March	April	May	June	July	August	September	October	November	December	Average <sup>1</sup>
2009 ...	157	157	161	161	161	161	161	161	161	161	161	161	160
2010 ...	161	161	139	139	139	139	139	139	139	139	139	139	143
2011 ...	139	139	145	145	145	145	145	145	145	145	145	145	144
2012 ...	145	145	178	178	178	178	178	178	178	178	178	178	173
2013 ...	178	178	184	184	184	184	184	184	184	184	184	184	183
Year	Mixed fertilizer												
	January	February	March	April	May	June	July	August	September	October	November	December	Average <sup>1</sup>
2009 ...	337	331	298	293	281	272	260	251	247	241	240	237	274
2010 ...	230	229	225	233	238	241	245	250	256	263	275	284	247
2011 ...	292	305	310	313	310	310	310	308	310	318	321	319	311
2012 ...	319	322	311	311	310	312	306	285	286	288	286	284	302
2013 ...	283	284	293	292	293	292	292	268	267	266	266	266	283
Year	Nitrogen												
	January	February	March	April	May	June	July	August	September	October	November	December	Average <sup>1</sup>
2009 ...	333	276	295	308	291	263	250	219	211	215	215	212	257
2010 ...	220	227	229	242	244	241	231	229	237	255	260	273	241
2011 ...	284	286	311	323	330	337	344	343	337	348	356	355	330
2012 ...	355	327	339	352	369	372	366	336	340	345	342	343	349
2013 ...	346	355	348	360	367	354	324	278	282	287	287	287	330
Year	Potash & phosphate												
	January	February	March	April	May	June	July	August	September	October	November	December	Average <sup>1</sup>
2009 ...	369	453	463	456	394	289	274	271	261	251	247	272	333
2010 ...	275	287	301	304	310	301	298	295	306	308	326	332	304
2011 ...	410	357	361	379	368	362	370	368	387	399	416	407	382
2012 ...	408	386	405	380	371	366	373	380	382	392	391	385	385
2013 ...	386	372	372	369	372	368	347	328	322	316	316	316	355
Year	Herbicides												
	January	February	March	April	May	June	July	August	September	October	November	December	Average <sup>1</sup>
2009 ...	135	141	144	145	145	140	141	137	138	138	142	144	141
2010 ...	133	132	132	133	133	132	133	133	133	132	131	130	132
2011 ...	130	130	130	130	129	129	129	130	131	132	132	133	130
2012 ...	133	137	138	137	138	139	139	139	139	139	141	140	138
2013 ...	141	140	141	140	141	141	141	141	142	143	143	143	141
Year	Insecticides												
	January	February	March	April	May	June	July	August	September	October	November	December	Average <sup>1</sup>
2009 ...	152	157	158	161	163	158	160	157	160	162	168	171	161
2010 ...	159	160	161	163	163	164	165	166	167	166	165	165	164
2011 ...	166	167	167	167	166	166	167	167	169	171	171	172	168
2012 ...	172	177	171	170	172	174	175	176	177	178	180	181	175
2013 ...	182	182	184	183	184	183	184	184	185	186	186	186	184

See footnote(s) at end of table.

--continued

**Prices Paid Index Sub-Components as a Percent of 1990-1992 Base, Monthly and Annual Average – United States: 2009-2013 (continued)**

[Revised historical price indexes for months not shown are available at [www.nass.usda.gov](http://www.nass.usda.gov). Blank data cells indicate estimation period has not begun]

Year	Fungicides & other												
	January	February	March	April	May	June	July	August	September	October	November	December	Average <sup>1</sup>
2009 ...	156	163	165	167	169	164	166	162	164	166	173	175	166
2010 ...	163	164	165	166	167	168	170	170	172	172	171	171	168
2011 ...	172	174	174	174	173	172	173	174	175	177	177	178	174
2012 ...	179	183	181	179	181	183	183	184	185	185	188	188	183
2013 ...	189	189	190	190	190	190	191	190	191	193			190
Year	Diesel												
	January	February	March	April	May	June	July	August	September	October	November	December	Average <sup>1</sup>
2009 ...	215	204	192	206	208	237	240	250	251	257	271	268	233
2010 ...	279	275	290	305	307	296	293	299	298	310	320	331	300
2011 ...	347	369	403	419	417	405	402	397	395	390	407	397	396
2012 ...	393	406	426	424	409	385	380	406	419	415	405	400	406
2013 ...	393	412	407	393	387	385	387	391	396	389			394
Year	Gasoline												
	January	February	March	April	May	June	July	August	September	October	November	December	Average <sup>1</sup>
2009 ...	154	165	169	177	195	226	218	226	221	222	231	227	203
2010 ...	237	231	242	249	248	239	238	238	236	244	249	260	243
2011 ...	269	278	308	328	338	318	316	315	313	299	294	284	305
2012 ...	293	310	334	338	323	307	298	322	333	324	299	287	314
2013 ...	288	317	320	308	312	313	310	309	306	291			307
Year	LP Gas												
	January	February	March	April	May	June	July	August	September	October	November	December	Average <sup>1</sup>
2009 ...	242	226	226	216	228	261	214	234	262	284	302	337	253
2010 ...	339	312	263	265	262	231	221	238	248	268	269	275	266
2011 ...	282	284	284	299	316	319	325	328	339	323	324	313	311
2012 ...	293	279	291	282	230	194	220	231	238	257	242	221	248
2013 ...	237	248	262	275	273	253	269	311	324	332			278
Year	Supplies												
	January	February	March	April	May	June	July	August	September	October	November	December	Average <sup>1</sup>
2009 ...	156	155	154	154	153	152	152	152	152	152	153	153	153
2010 ...	153	153	153	154	154	154	155	155	156	156	156	156	155
2011 ...	158	158	158	159	162	162	163	164	164	164	164	164	162
2012 ...	164	164	165	165	165	166	166	165	167	167	167	166	166
2013 ...	166	166	166	167	167	168	168	167	167	167			167
Year	Repairs												
	January	February	March	April	May	June	July	August	September	October	November	December	Average <sup>1</sup>
2009 ...	158	158	158	159	158	158	159	159	159	159	159	159	159
2010 ...	160	161	161	161	162	162	163	163	163	163	163	163	162
2011 ...	164	165	165	168	168	168	169	170	171	171	171	171	168
2012 ...	172	172	173	174	174	174	175	175	174	174	174	174	174
2013 ...	175	175	175	175	175	175	175	175	174	174			175
Year	Autos												
	January	February	March	April	May	June	July	August	September	October	November	December	Average <sup>1</sup>
2009 ...	109	109	109	109	109	109	110	108	108	110	112	112	110
2010 ...	112	111	111	111	110	110	110	110	110	110	111	111	111
2011 ...	111	112	112	113	114	115	115	115	115	115	115	115	114
2012 ...	115	116	115	116	116	116	115	115	115	115	116	116	116
2013 ...	117	117	117	117	116	116	116	116	115	115			116
Year	Trucks												
	January	February	March	April	May	June	July	August	September	October	November	December	Average <sup>1</sup>
2009 ...	107	108	109	109	109	110	110	109	109	111	112	113	110
2010 ...	113	113	113	113	113	112	112	112	112	113	113	114	113
2011 ...	114	115	116	116	116	116	116	116	116	116	116	116	116
2012 ...	117	118	118	118	118	118	118	118	118	118	119	119	118
2013 ...	119	120	120	120	120	120	120	120	120	120			120

See footnote(s) at end of table.

--continued

**Prices Paid Index Sub-Components as a Percent of 1990-1992 Base, Monthly and Annual Average – United States: 2009-2013 (continued)**

[Revised historical price indexes for months not shown are available at [www.nass.usda.gov](http://www.nass.usda.gov). Blank data cells indicate estimation period has not begun]

Year	Tractors												
	January	February	March	April	May	June	July	August	September	October	November	December	Average <sup>1</sup>
2009 ...	184	183	185	186	186	186	186	187	188	188	189	189	186
2010 ...	188	189	189	190	191	191	194	195	197	198	199	200	193
2011 ...	201	202	203	203	203	203	204	204	208	208	209	209	205
2012 ...	209	209	208	209	210	210	211	211	214	215	216	214	211
2013 ...	214	216	216	216	216	216	216	216	216	216	216	216	216
Year	Self-propelled												
	January	February	March	April	May	June	July	August	September	October	November	December	Average <sup>1</sup>
2009 ...	218	229	229	229	229	229	230	230	230	230	231	231	229
2010 ...	234	234	234	235	236	236	237	238	239	240	247	247	238
2011 ...	248	249	250	252	253	254	255	257	259	263	265	266	256
2012 ...	267	269	270	270	271	272	273	274	274	275	275	278	272
2013 ...	279	278	279	279	279	278	281	280	280	280	280	280	279
Year	Other machinery												
	January	February	March	April	May	June	July	August	September	October	November	December	Average <sup>1</sup>
2009 ...	228	230	231	230	230	229	244	243	242	242	241	241	236
2010 ...	240	240	240	240	241	241	243	243	243	243	244	244	242
2011 ...	245	248	249	250	253	253	254	256	256	256	257	259	253
2012 ...	259	258	263	265	266	267	268	268	268	268	269	269	266
2013 ...	270	273	272	272	273	273	273	273	273	273	273	273	273
Year	Custom rates												
	January	February	March	April	May	June	July	August	September	October	November	December	Average <sup>1</sup>
2009 ...	145	145	145	145	145	145	145	145	145	145	145	145	145
2010 ...	145	145	145	145	145	145	145	145	145	145	145	145	145
2011 ...	148	148	148	148	148	148	148	148	148	148	148	148	148
2012 ...	157	157	157	157	157	157	157	157	157	157	157	157	157
2013 ...	157	157	157	157	157	157	157	157	157	157	157	157	157
Year	Other services												
	January	February	March	April	May	June	July	August	September	October	November	December	Average <sup>1</sup>
2009 ...	158	158	158	157	157	159	158	157	158	157	157	157	158
2010 ...	161	161	162	162	162	164	164	164	164	163	163	163	163
2011 ...	164	164	165	165	166	167	167	167	167	166	166	165	166
2012 ...	168	168	168	168	169	170	169	170	170	168	168	168	169
2013 ...	171	171	171	171	172	174	174	174	174	174	174	174	173
Year	Cash rent												
	January	February	March	April	May	June	July	August	September	October	November	December	Average <sup>1</sup>
2009 ...	236	236	236	236	236	236	236	236	236	236	236	236	236
2010 ...	243	243	243	243	243	243	243	243	243	243	243	243	243
2011 ...	262	262	262	262	262	262	262	262	262	262	262	262	262
2012 ...	270	270	270	270	270	270	270	270	270	270	270	270	270
2013 ...	278	278	278	278	278	278	278	278	278	278	278	278	278
Year	Share rent												
	January	February	March	April	May	June	July	August	September	October	November	December	Average <sup>1</sup>
2009 ...	124	124	124	124	124	124	124	124	124	124	124	124	124
2010 ...	129	129	129	129	129	129	129	129	129	129	129	129	129
2011 ...	139	139	139	139	139	139	139	139	139	139	139	139	139
2012 ...	145	145	145	145	145	145	145	145	145	145	145	145	145
2013 ...	147	147	147	147	147	147	147	147	147	147	147	147	147

<sup>1</sup> Simple average and is year-to-date for current year.

**Prices Paid Indexes as a Percent of 1990-1992 Base, Monthly and Annual Average – United States: 2009-2013 (continued)**

[Revised historical price indexes for months not shown are available at [www.nass.usda.gov](http://www.nass.usda.gov). Blank data cells indicate estimation period has not begun]

Year	Interest												
	January	February	March	April	May	June	July	August	September	October	November	December	Average <sup>1</sup>
2009 ...	137	137	137	137	137	137	137	137	137	137	137	137	137
2010 ...	133	133	133	133	133	133	133	133	133	133	133	133	133
2011 ...	145	145	145	145	145	145	145	145	145	145	145	145	145
2012 ...	147	147	147	147	147	147	147	147	147	147	147	147	147
2013 ...	143	143	143	143	143	143	143	143	143	143	143	143	143
Year	Taxes												
	January	February	March	April	May	June	July	August	September	October	November	December	Average <sup>1</sup>
2009 ...	204	204	204	204	204	204	204	204	204	204	204	204	204
2010 ...	213	213	213	213	213	213	213	213	213	213	213	213	213
2011 ...	222	222	222	222	222	222	222	222	222	222	222	222	222
2012 ...	227	227	227	227	227	227	227	227	227	227	227	227	227
2013 ...	234	234	234	234	234	234	234	234	234	234	234	234	234
Year	Wage rates												
	January	February	March	April	May	June	July	August	September	October	November	December	Average <sup>1</sup>
2009 ...	189	189	189	188	188	188	184	184	184	189	189	189	188
2010 ...	191	191	191	187	187	187	186	186	186	192	192	192	189
2011 ...	195	195	195	189	189	189	189	189	189	193	193	193	192
2012 ...	199	199	199	197	197	197	196	196	196	203	203	203	199
2013 ...	208	208	208	206	206	206	206	206	206	206	206	206	207
Year	Family living												
	January	February	March	April	May	June	July	August	September	October	November	December	Average <sup>1</sup>
2009 ...	157	157	158	158	159	160	160	160	160	160	160	160	159
2010 ...	161	161	161	162	162	162	162	162	162	162	162	163	162
2011 ...	163	164	166	167	168	167	168	168	168	168	168	167	167
2012 ...	168	169	170	171	170	170	170	171	172	172	171	170	170
2013 ...	171	172	173	173	173	173	173	173	174	174			173

See footnote(s) at end of table.

--continued

**Prices Paid Indexes as a Percent of 1990-1992 Base, Monthly and Annual Average – United States: 2009-2013 (continued)**

[Revised historical price indexes for months not shown are available at [www.nass.usda.gov](http://www.nass.usda.gov). Blank data cells indicate estimation period has not begun]

Year	Production items with farm origin <sup>3</sup>												
	January	February	March	April	May	June	July	August	September	October	November	December	Average <sup>1</sup>
2009 ...	179	177	181	182	185	185	181	178	176	176	178	179	180
2010 ...	182	180	181	183	182	180	181	182	184	188	192	197	184
2011 ...	203	209	214	220	220	220	222	224	224	222	224	224	219
2012 ...	229	233	245	243	244	243	244	256	256	256	255	256	247
2013 ...	255	254	254	251	252	252	258	250	251	255			253
Year	Production items with non-farm origin <sup>4</sup>												
	January	February	March	April	May	June	July	August	September	October	November	December	Average <sup>1</sup>
2009 ...	187	186	185	186	184	183	182	181	180	181	182	182	183
2010 ...	186	186	187	189	190	189	189	190	191	193	195	197	190
2011 ...	204	206	210	213	214	213	214	214	214	215	216	215	212
2012 ...	218	218	220	220	220	218	218	217	219	219	218	217	219
2013 ...	220	222	222	222	223	222	220	217	217	217			220
Year	Crop sector (PPITW)												
	January	February	March	April	May	June	July	August	September	October	November	December	Average <sup>1</sup>
2009 ...	189	188	190	191	189	188	187	186	185	186	187	187	188
2010 ...	191	191	192	193	193	193	193	193	194	196	197	199	194
2011 ...	206	207	212	213	214	213	214	214	214	215	216	216	213
2012 ...	219	219	223	223	222	221	221	221	222	223	222	221	221
2013 ...	225	226	227	227	227	227	226	223	223	223			225
Year	Livestock Sector (PPITW)												
	January	February	March	April	May	June	July	August	September	October	November	December	Average <sup>1</sup>
2009 ...	169	168	168	168	169	170	168	166	165	166	167	167	168
2010 ...	170	169	170	171	171	170	170	171	172	175	177	180	172
2011 ...	185	188	190	194	194	194	195	196	196	195	197	196	193
2012 ...	200	202	207	206	206	205	205	212	212	212	211	212	208
2013 ...	212	213	212	210	211	211	214	209	210	212			211

<sup>1</sup> Simple average and is year-to-date for current year.

<sup>2</sup> For the 1990-92=100 base period, the Services & Rent Index is separated.

<sup>3</sup> Feed, livestock & poultry purchases, and seed.

<sup>4</sup> Fertilizer, agricultural chemicals, fuels, supplies & repairs, autos & trucks, machinery, building materials, and services & rent.



## Reliability of Prices Paid Estimates

**Definition:** Prices paid by farmers represent the average costs of inputs purchased by farmers and ranchers to produce agricultural commodities. Conceptually, the average price when multiplied by quantity purchased should equal total producer expenditures for the item.

**Survey procedures:** The prices paid data are obtained from establishments that sell goods and services to farmers and ranchers. Annually, about 8,500 firms are randomly selected from lists by type of item sold with an average response rate in the range of 75-80 percent. Firms are asked to report the price for the specified item "most commonly bought by farmers" or that was the "volume seller". Approximately 135 items are surveyed each March to represent all production input items purchased. The survey reference period for most items is the five business days centered at the 15th of the month. Separate prices paid surveys are conducted for agricultural chemicals, fuels, feed, fertilizer, machinery, and seed.

**Summary and estimation procedures:** The annual March Prices Paid Survey is summarized as a non-probability survey. Average prices reported are aggregated to the region and United States level using weights available from expenditure data and other administrative sources. Price recommendations are prepared by the State Field Offices and Headquarters for review by the Agricultural Statistics Board in Washington, D.C. Also, the change in price level for individual items surveyed are combined to the regional and United States levels, and are published as prices paid indexes referenced to a specific base period. Prices paid indexes for new autos and trucks, building materials, farm supplies, motor supplies, and marketing containers are updated based on price changes measured in selected Bureau of Labor Statistics (BLS) indexes.

**Revisions:** Any revisions are published in the monthly and in annual issues of Agricultural Prices. The basis for revision must be supported by additional data that directly affect the level of the estimate. More revisions are likely for March when separate prices paid surveys are conducted, in lieu of BLS indexes, by the USDA to measure price change.

**Reliability:** Current methods of summarization for the March data are not designed directly to calculate sampling errors. However, analytical measures approximate the United States relative sampling errors for major items around 10 percent. Any non-sampling errors are attributed to such things as the inability to obtain correct information, differences in interpreting questions or definitions, mistakes in coding or processing the data, etc. Efforts are made at each step in the survey process to minimize these non-sampling errors.

**Program change:** Effective January 1, 1995, the National Agricultural Statistics Service updated the weights and changed the construction of its prices paid and received by farmers' indexes. A Federal Register Notice dated October 28, 1994 discussed these program modifications.

A 1990-1992 reference and base period replaced the 1977 reference and 1971-1973 base weight period. Five-year moving average weights replaced the current fixed 1971-1973 base period weights. The 1910-1914=100 price indexes, required by statute for computing parity prices, were linked forward based on the changes in the new 1990-1992=100 indexes. The new indexes were constructed by multiplying the ratios of the current prices to the base period prices by the moving average weights (adjusted for seasonal marketing patterns for the prices received indexes).

## Information Contacts

### General

Troy Joshua, Chief, Environmental, Economics and Demographics Branch ..... (202) 720-6146

Below are the commodity specialists to contact for additional information.

### Crop Prices Received

Lance Honig, Chief, Crops Branch ..... (202) 720-2127

Anthony Prillaman, Head, Field Crops Section ..... (202) 720-2127

Angie Considine – Peanuts, Rice ..... (202) 720-7688

Brent Chittenden – Oats, Rye, Wheat ..... (202) 720-8068

Angie Considine – Cotton, Cotton Ginnings, Sorghum ..... (202) 720-7688

Chris Hawthorn – Corn, Proso Millet, Flaxseed ..... (202) 720-9526

Cody Brokmeyer – Crop Weather, Barley, Hay ..... (202) 720-5944

Travis Thorson – Soybeans, Sunflower, Other Oilseeds..... (202) 720-7369

Jorge Garcia-Pratts, Head, Fruits, Vegetables and Special Crops Section..... (202) 720-2127

Debbie Flippin – Fresh and Processing Vegetables, Onions, Strawberries..... (202) 720-2157

Fred Granja – Apples, Apricots, Cherries, Plums, Prunes, Tobacco ..... (202) 720-4288

Jorge Garcia-Pratts – Floriculture, Maple Syrup, Nursery, Tree Nuts ..... (202) 720-2127

Lakeya Jones – Citrus, Coffee, Sugar Crops, Grapes, Tropical Fruits..... (202) 720-5412

Daphne Schauber – Berries, Cranberries, Potatoes, Sweet Potatoes ..... (202) 720-4285

Dan Norris – Austrian Winter Peas, Dry Edible Peas, Lentils, Mints, Mushrooms, Peaches, Pears,  
Wrinkled Seed Peas, Dry Beans ..... (202) 720-3250

### Livestock Prices Received

Dan Kerestes, Chief, Livestock Branch ..... (202) 720-3570

Scott Hollis, Head, Livestock Section..... (202) 720-3570

Travis Averill – Cattle..... (202) 720-3040

Mike Miller – Milk, Milk Cows ..... (202) 720-3278

Doug Bounds – Hogs ..... (202) 720-3106

Alissa Cowell-Mytar – Sheep, Lambs, and Goats ..... (202) 720-4751

Bruce Boess, Head, Poultry and Specialty Commodities Section..... (202) 720-3570

Doug Boline – Turkeys ..... (202) 720-0585

Tom Kruchten – Honey ..... (202) 690-4870

Kim Linonis – Eggs..... (202) 690-8632

Miste Salmon – Broilers..... (202) 720-3244

### Indexes, Prices Paid, and Parity Prices

Troy Joshua, Chief, Environmental, Economics and  
Demographics Branch..... (202) 720-6146

Tony Dorn, Head, Economics Section ..... (202) 690-3223

Daryl Brinkman – Prices Received Indexes, Parity Prices ..... (202) 720-8844

Chris Dickerson – Prices Received Indexes, Parity Prices, Grazing Fees ..... (202) 690-1348

Vincent Davis – Prices Paid Indexes, Prices Paid for Feed, Fertilizer, Agricultural Chemicals,  
Seeds, Farm Supplies and Repairs, Farm Machinery, Fuels, Feeder Livestock, Poultry Chicks,  
Feed Price Ratios, Autos & Trucks..... (202) 690-3229

## Access to NASS Reports

For your convenience, you may access NASS reports and products the following ways:

- All reports are available electronically, at no cost, on the NASS web site: <http://www.nass.usda.gov>
- Both national and state specific reports are available via a free e-mail subscription. To set-up this free subscription, visit <http://www.nass.usda.gov> and in the “Follow NASS” box under “Receive reports by Email,” click on “National” or “State” to select the reports you would like to receive.

For more information on NASS surveys and reports, call the NASS Agricultural Statistics Hotline at (800) 727-9540, 7:30 a.m. to 4:00 p.m. ET, or e-mail: [nass@nass.usda.gov](mailto:nass@nass.usda.gov).

The U.S. Department of Agriculture (USDA) prohibits discrimination against its customers, employees, and applicants for employment on the bases of race, color, national origin, age, disability, sex, gender identity, religion, reprisal, and where applicable, political beliefs, marital status, familial or parental status, sexual orientation, or all or part of an individual's income is derived from any public assistance program, or protected genetic information in employment or in any program or activity conducted or funded by the Department. (Not all prohibited bases will apply to all programs and/or employment activities.)

If you wish to file a Civil Rights program complaint of discrimination, complete the [USDA Program Discrimination Complaint Form](#) (PDF), found online at [http://www.ascr.usda.gov/complaint\\_filing\\_cust.html](http://www.ascr.usda.gov/complaint_filing_cust.html), or at any USDA office, or call (866) 632-9992 to request the form. You may also write a letter containing all of the information requested in the form. Send your completed complaint form or letter to us by mail at U.S. Department of Agriculture, Director, Office of Adjudication, 1400 Independence Avenue, S.W., Washington, D.C. 20250-9410, by fax (202) 690-7442 or email at [program.intake@usda.gov](mailto:program.intake@usda.gov).